

SubliJet® R

POWERDRIVER™ R
RICOH
GXe3300N

SUBLIJET-R COLOR MANAGEMENT DRIVER FOR THE RICOH GX e3300N - 4 COLOR

USER'S MANUAL
Windows XP, Vista & 7

Ricoh GXe3300N GelSprinter PowerDriver-R User's Manual

PowerDriver-R is equipped with a user-friendly software interface that allows individuals to access and customize driver configuration settings for optimal printing performance. As an added bonus, PowerDriver-R is also outfitted with several resource and utility features to bring additional help and support for customers looking to bolster their printing experience. Through these powerful features, users are able to gain complete control over their image quality, colour output and print options.

1. To view the PowerDriver-R configuration settings, click your start icon and select **Devices and Printers** (see *FIGURE 1*). If you are using an older version of WINDOWS, you will instead select **Printers and Faxes**.

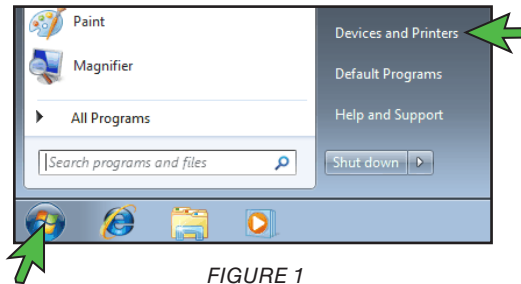


FIGURE 1

2. In the Devices and Printers folder, right-click the **PowerDriver-R GXe3300N** and select **Printing Preferences** (see *FIGURE 2*). This will open the PowerDriver-R GXe3300N Printing Preferences window (see *FIGURE 3*).

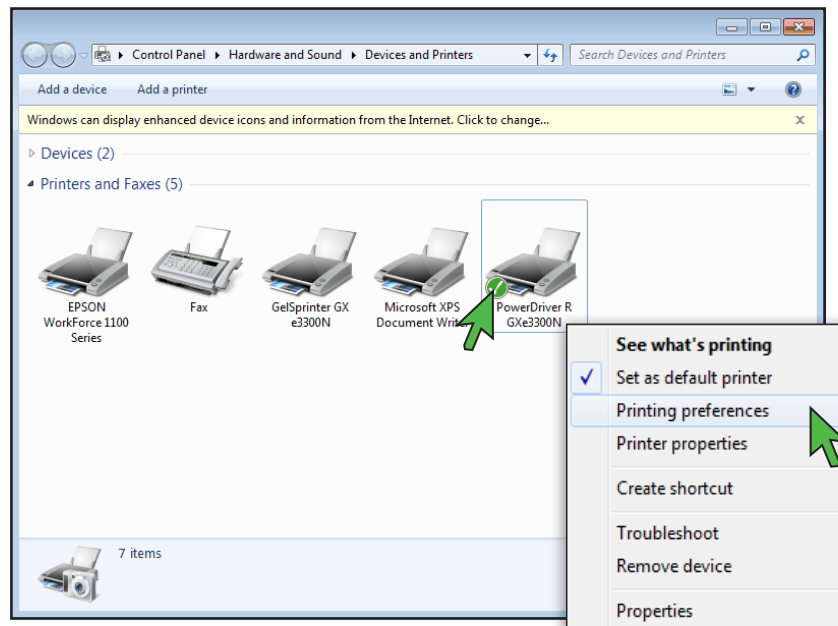


FIGURE 2

3. With the PowerDriver-R GXe3300N Printing Preference window open, click the **Virtual Printer Driver** tab . Here you will find five different **SECTIONS** to utilize: (see *FIGURE 3*).

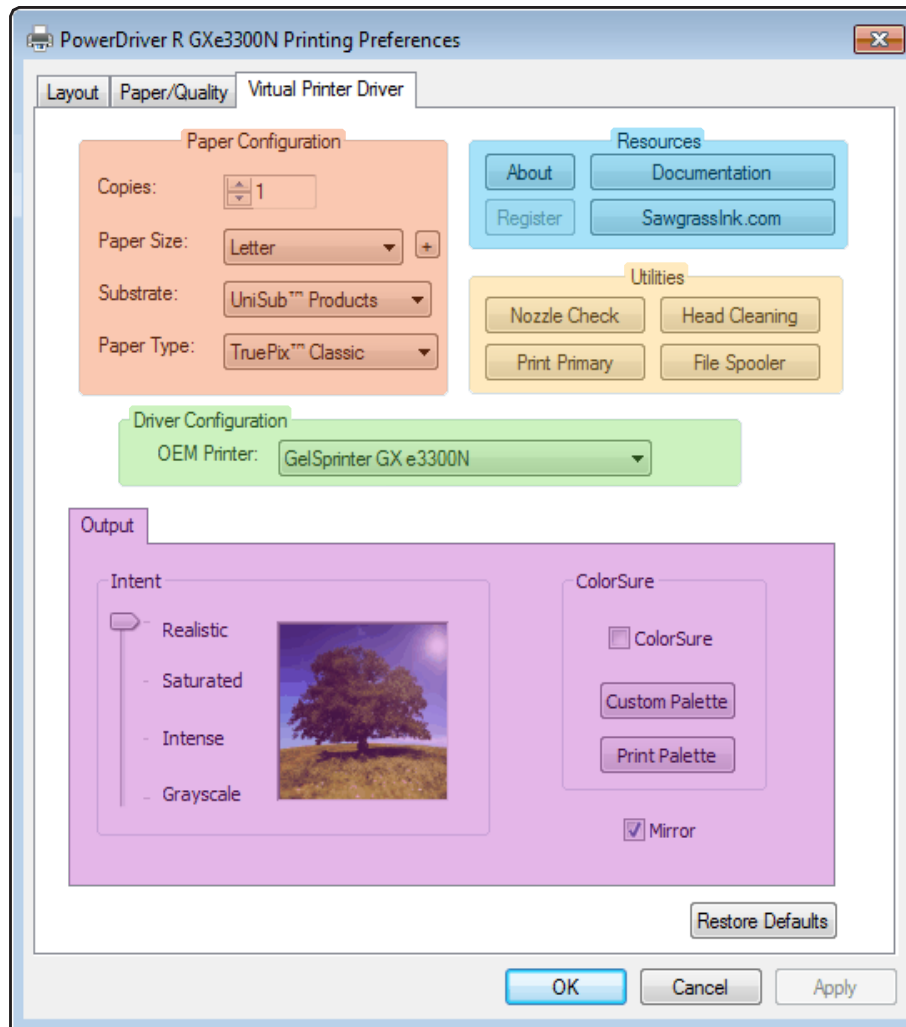
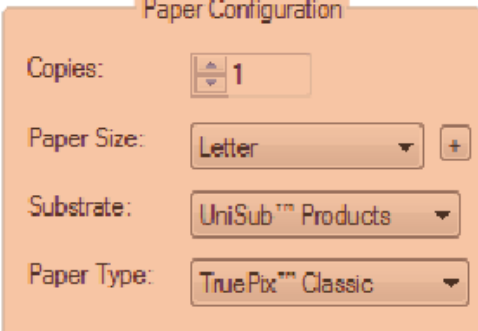


FIGURE 3

- SECTION 1** Paper Configuration Choose Paper Size and Type, Copies and Substrate.
- SECTION 2** Driver Configuration Select OEM printer intended for use.
- SECTION 3** Output Adjust Colour, create Palette and Mirror image.
- SECTION 4** Resources Access Documentation, Help and On-line Support.
- SECTION 5** Utilities Use if Printer Maintenance is needed.

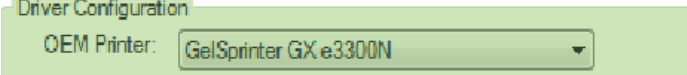
SECTION 1



The image shows a 'Paper Configuration' dialog box with an orange background. It contains four settings: 'Copies' is a numeric spinner set to 1; 'Paper Size' is a dropdown menu set to 'Letter' with a '+' button to its right; 'Substrate' is a dropdown menu set to 'UniSub™ Products'; and 'Paper Type' is a dropdown menu set to 'TruePix™ Classic'.

- Copies** – Sets the number of prints needed per image. Use this feature when multiple prints of the same image are needed.
- Paper Size** – Sets the desired output paper size used in the printer. Adjust this to match the size of the transfer paper in the paper tray.
- Substrate** – Sets the desired substrate being used. Match this to the type of material on to which you will be transferring your printed image. Because PowerDriver's colour management is optimized for each substrate listed, it is important to choose the substrate that most closely matches the substrate being used.
- Paper Type** – Sets the desired paper type being used. Match this to the type of transfer paper you will be printing on. Because PowerDriver's colour management is optimized for each paper type listed, it is important to choose the paper type that most closely matches the transfer paper being used.

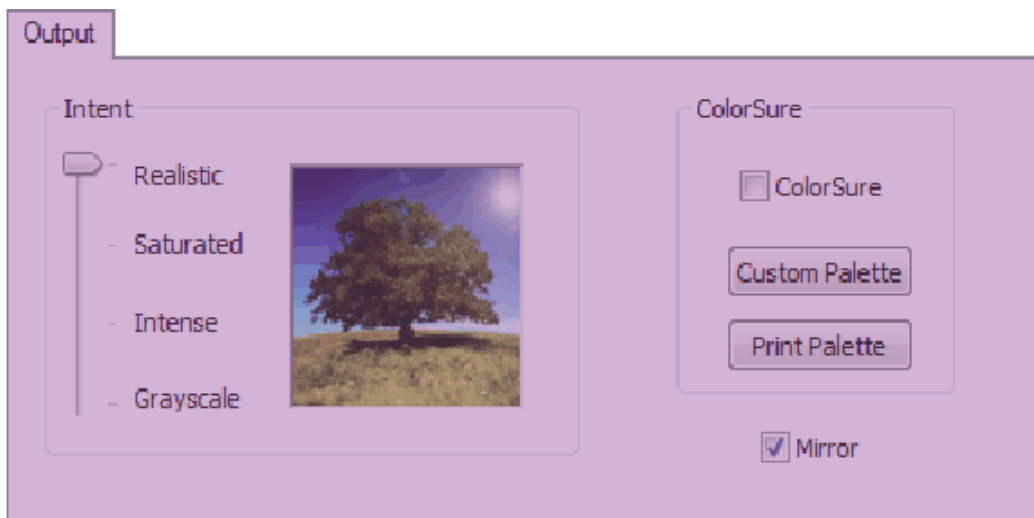
SECTION 2



The image shows a 'Driver Configuration' dialog box with a light green background. It contains one setting: 'OEM Printer' is a dropdown menu set to 'GelSprinter GXe3300N'.

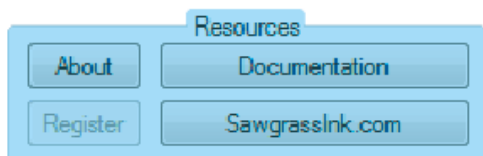
- OEM Printer** – Sets the OEM printer intended for use with PowerDriver-R. This feature is particularly useful when printing to multiple printers of the same ink set or multiple printers that require multiple drivers. For instance, if you have two GXe3300N's and one is for printing ChromaBlast-R while the other is for printing SubliJet-R, you are able to set the printer loaded with SubliJet-R as the default printer in the PowerDriver-R or vice versa. On the other hand, if you have two GXe3300N's and both are for printing with SubliJet-R, you can choose between each printer per print job.

SECTION 3



- Realistic** – This setting is intended as a photographic colour management solution. It is most suitable for photographic images containing landscapes or portraits.
- Saturated** – This setting is intended as a business graphics colour management solution. It is most suitable for business logos and designs that require a more vivid colour output.
- Intense** – This setting is similar to “Saturated”, but has a deeper/more vivid output. It is most suitable when the “Saturated” setting does not output the desired amount of “pop” or colour needed.
- Grayscale** – This setting is intended for printing monochromatic or black and white images. It allows you to print images using varying shades of gray only.
- Mirror** – Check this box to “flip” or reverse your image. The image becomes reversed when transferring from paper to substrate. Therefore, you will need to “flip” or reverse the image before printing to paper.
- ColorSure** – Check this box if you want to use the ColorSure colour palette. ColorSure is a method for reproducing exact spot colours. By picking colours from the ColorSure Palette, you will be able to consistently reproduce colours in a reliable manner.
- Custom Palette** – Here you can add your own unique colours to the ColorSure palette. ColorSure must be checked in Colour Options in order to use this feature.
- Print Palette** – Click here to print the default ColorSure Palette. This feature allows you to see how colours will look once transferred to your desired substrate. Before you print the ColorSure Palette, be sure to choose the paper size, paper type and substrate that most closely resemble those which you are using. The default ColorSure Palette will also contain custom colours once you have added and saved them using the Custom Palette utility.

SECTION 4



- About** – Click here to access general information about PowerDriver-R and its functions. The help dialog menu also contains a direct link to our Technical Support web page, where you can find the latest driver updates, literature and educational resources offered by Sawgrass Technologies, Inc.
- Documentation** – Click here to access the folder where the literature was stored on your PC during the installation of PowerDriver-R. This literature will guide you through the installation, registration and setup of your printer, driver and software.
- Register** – Click here to register your product. Registration is required to unlock all product features and functions that PowerDriver-R has to offer. You must register PowerDriver-R for every PC on which it is installed.
- Sawgrassink.com** – Click here to access the Sawgrass Europe website. You will find the absolute latest information and updates on all products, materials, processes, and/or procedures relative to all offerings by or through Sawgrass Europe.

SECTION 5



- Nozzle Check** – Click here to print a test pattern to check nozzle condition. If any of the nozzle patterns are missing or incomplete, then a head cleaning is required.
- Head Cleaning** – Click here to initiate the head cleaning process. This feature is necessary when nozzles are missing thus causing colour shift or “banding” in your printed images. You should print a nozzle check to confirm missing nozzles before performing a head cleaning. Repeat the Head Cleaning until a complete nozzle check has been achieved. Cartridge users should only perform two (2) head cleanings, while users of bulk ink systems can try up to five (5). Contact technical support if you fail to achieve a good / complete nozzle check after the recommended amount of cleanings.
- Print Primary** – Click here to print a primary ink chart. This chart contains a series of blocks which represent each ink channel on the print head. It can be useful when attempting to troubleshoot or trying to clear clogged nozzles.
- File Spooler** – Click here to launch the File Spooler Utility. This feature is solely intended for advanced users and technical support for troubleshooting. It allows you to print jobs that were previously processed and saved to disk as text files or print ready files, also known as PRN files.

- 4.) At the top of the PowerDriver-R GXe3300N Printing Preference window, click the **Layout** tab. Here you will find four different **SECTIONS** to utilize: (see *FIGURE 4*).

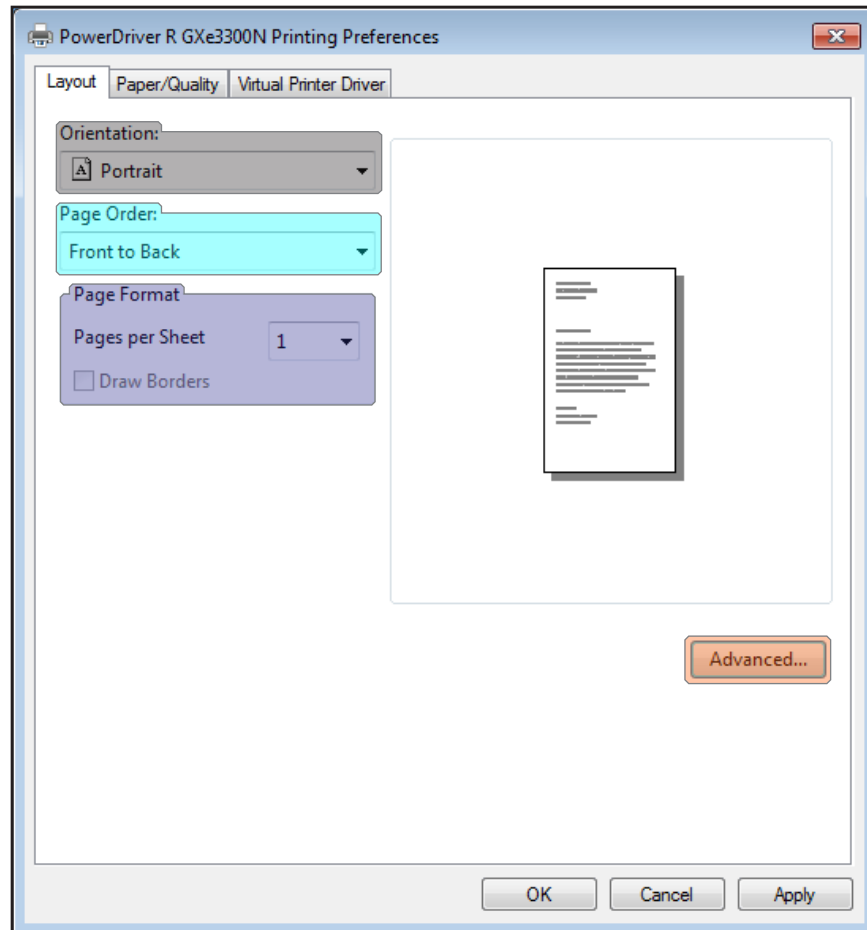


FIGURE 4

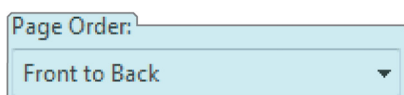
- SECTION 6** Orientation Choose the direction in which an image is printed.
- SECTION 7** Page Order Sets the chronological order when printing images.
- SECTION 8** Page Format Adjust the number of pages per sheet.
- SECTION 9** Advanced... Access the current Document Settings.

SECTION 6



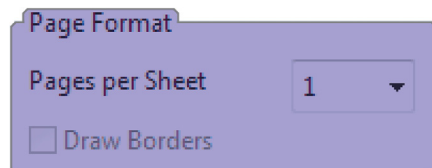
- Portrait** – With this selection the page height is longer than the width. In other words, the image is printed vertically from top to bottom.
- Landscape** – With this selection the page width is longer than the height. In other words, the image is printed horizontally from left to right.

SECTION 7



- Front to Back** – Using this setting will print the first image first and the last image last. For instance, if 4 different images are printed at the same time, they will print in the following order: 1, 2, 3 and 4.
- Back to Front** – Using this setting will print the last image first and the first image last. For instance, if 4 different images are printed at the same time, they will print in the following order: 4, 3, 2 and 1.

SECTION 8



- Pages per Sheet** – Allows you to fit multiple pages on a single sheet of paper. The default value 1 should be used when printing one image/page per sheet.
- Draw Borders** – Prints frames around the pages printed on each sheet.

SECTION 9



- Document Settings** – Click here for an overview of the default advanced document settings. These settings have been specifically engineered per printer platform and should not be adjusted by the end user.

- 5.) At the top of the PowerDriver-R GXe3300N Printing Preference window, click the **Paper/Quality** tab. Here you will find three different **SECTIONS** to utilize: (see *FIGURE 5*).

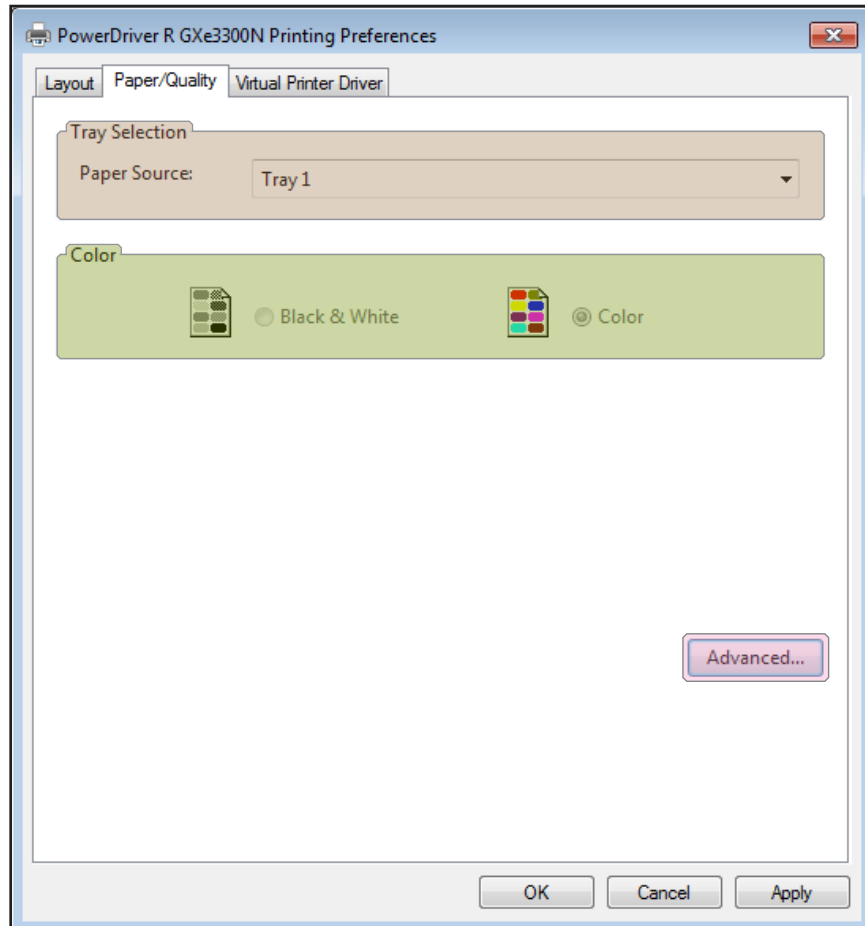
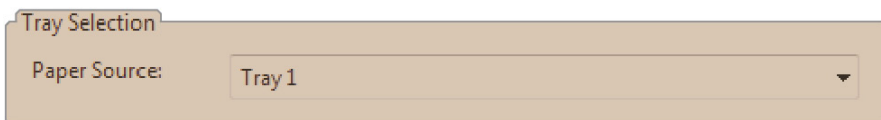


FIGURE 5

- SECTION 10** **Tray Selection** Allows you to select the printer's paper source.
- SECTION 11** **Color** This default is locked and controlled by PowerDriver.
- SECTION 12** **Advanced...** Access the current Document Settings.

SECTION 10



- Automatically Select** – Use this setting if you would like the printer driver to select the appropriate tray as your paper source.
- Tray 1** – Use this setting if you plan to use the primary paper tray as your paper source. It is recommended to use this as your default paper source.
- Bypass Tray** – Use this setting if your printer is equipped with an additional tray which you would like to use as your primary paper source.

SECTION 11



- Black & White** – This setting has been specifically engineered per printer platform and should not be adjusted by the end user.
- Color** – This setting has been specifically engineered per printer platform and should not be adjusted by the end user.

SECTION 12



- Document Settings** – Click here for an overview of the default advanced document settings. These settings have been specifically engineered per printer platform and should not be adjusted by the end user.

Please visit us on the web for the absolute latest Information and updates on all products, materials, processes, and / or procedures relative to all offerings by or through Sawgrass Europe:

www.sawgrasseurope.com