



SALES NETWORK

SAMSUNG TECHWIN CO., LTD.

145-3, Sangdaewon 1-Dong, Jungwon-Gu,
Sungnam, Kyungki-Do, Korea 462-703
TEL: +82-31-740-8137-8141 FAX: +82-31-740-8145

SAMSUNG OPTO-ELECTRONICS AMERICA, INC. ELECTRONIC IMAGING DIV.

40 Seaview Drive, Secaucus NJ 07094, U.S.A
TEL: +1-201-902-0347 FAX: +1-201-902-0429

SAMSUNG TECHWIN MOSCOW OFFICE

LENNINGRADSDY PR-KT, 37A. KORP.14
RUSSIA, 125167, MOSCOW
TEL: +7-095-258-9296, 9298 FAX: +7-095-258-9297

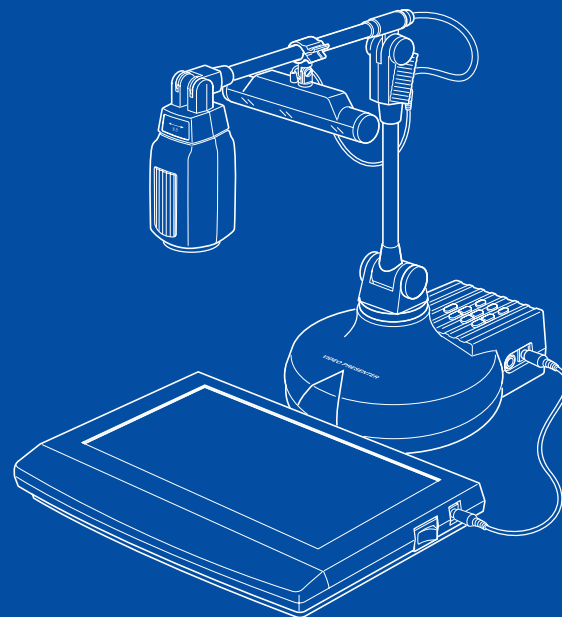
SAMSUNG OPTO-ELECTRONICS UK LTD.

Samsung House, 1000 Hillswood Drive
Hillswood Business Park Chertsey Surrey KT16 OPS
TEL: +44 (0)1932 455 308 FAX: +44 (0)1932 455 325

TIANJIN SAMSUNG OPTO-ELECTRONICS CO., LTD.

7 Pingchang Rd, Nankai Dist, Tianjin, P.R China
Post Code: 300190
TEL: +86-22-2761-4599 FAX: +86-22-2769-7558

SAMSUNG



VIDEO PRESENTER
USB CAPTURE PROGRAM
USER'S MANUAL
SVP-5300

| | |
|---|----|
| ■ Installing Program | 1 |
| Before installing the Samsung Digital Presenter Program | 1 |
| System requirements | 1 |
| Installing program | 2 |
| Connecting Samsung Digital Presenter to PC | 2 |
| Installing USB driver | 3 |
| Installing Samsung Digital Presenter Program | 5 |
| Installation tips | 6 |
| ■ Running Program | 8 |
| Running the Samsung Digital Presenter Program | 8 |
| ■ Using Program | 9 |
| Using the Samsung Digital Presenter Capture Program | 9 |
| Capturing the still picture and AVI capturing | 13 |
| Digital Imaging Effect Processing (DIP) | 16 |
| Digital Imaging Effect Processing (DIP) functions | 18 |
| Using Samsung Digital Presenter TWAIN Driver | 26 |
| ■ Troubleshooting | 30 |
| ■ Specification | 33 |

◆ Before installing the Samsung Digital Presenter Program

The supplied Samsung Digital Presenter can save the image which is captured through presenter lens as illustration file or AVI file, and can be controlled on the PC.

To control the Digital Presenter on the PC, connect the Samsung Digital Presenter to the PC through USB interface and install the USB driver and the Samsung Digital Presenter program using the supplied program CD.

◆ System requirements

- CPU : Pentium 4, 2.4GHz or higher recommended
- Windows 2000 pro or later
 - Supporting window list : Window 2000 pro / XP / 2003
- RAM : 256MB or higher recommended
- USB2.0 interface port (On-board type USB chipset recommended)
- Graphic card : 65,536 colors or higher, SVGA (800 X 600) resolution or higher (Video RAM 16MB or higher)
- CD-ROM drive



Caution

· This program is available in USB2.0 mode only.

Installing Program

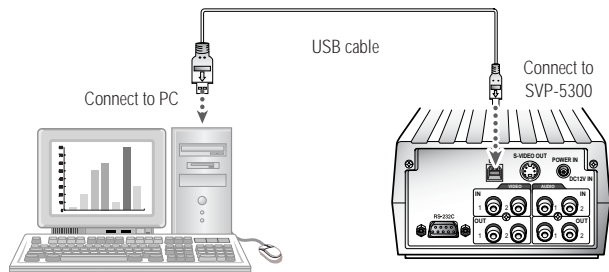
◆ Installing program

To install the program

1. Download the latest DirectX version from Microsoft Windows Update site.
2. Connect the Samsung Digital Presenter to your PC with USB cable, and turn on the power of Digital Presenter.
3. Install the USB driver. (See page 3 for details.)
4. Install the Samsung Digital Presenter control program. (See page 5 for details.)

◆ Connecting Samsung Digital Presenter to PC

Connect the one end of USB cable to the USB port on computer and the other end to the USB port on Digital Presenter, respectively. Make sure the power cable is connected and turn on the power.



⚠ Caution

- We recommend you to connect the USB cable to the USB port on computer main board. (It can make troubles when using extended front-side port or USB hub without power depending on computers.)
- Use the USB cable between the presenter and the PC with length of 5.0m or less.

◆ Installing USB driver

1. After the Digital Presenter is connected properly and the power is turned on, "Found New Hardware Wizard" dialog box will appear (in case of Windows XP).

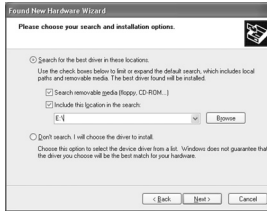


2. Select "Install from a list or specific location (Advanced)" box and click "Next" (in case of Windows XP).



Installing Program

3. Insert the Samsung Digital Presenter program CD into your CD-ROM drive, and select the "Search removable media (floppy, CD-ROM...)" box and "Include this location in the search" box, and then type E:\ (where E is the drive letter for the CD-ROM drive).



4. Click "Next". The USB driver will be installed by clicking "Finish".



Caution

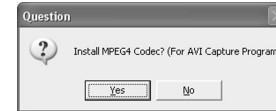
- When you use it through PCI/PCMCIA type USB 2.0 port in Windows 98(SE), ME it may require to install the Windows 98 original CD.
- Windows 98 : **W**Win98_se**W**setup**W**Win98
- Windows 98SE : **W**Win98_se
- Windows ME : **W**Win_me
- When you can't find KS*. * files : Your system is not installed the latest DirectX version
After Installing DirecX, try to install USB driver.

◆ Installing Samsung Digital Presenter program

1. Insert the Samsung Digital Presenter program CD into your CD-ROM drive, and the install program will be auto run. Select for setup language.



2. When Installshield Wizard window opens, click "Next".
3. Choose installing MPEG-4 Video Codec for compressing AVI file in USB Capture Program. If you do not install MPEG-4 Codec, You cannot compress AVI file. We recommend to install codecs.



4. When Install MPEG-4 codec, Hardware Installation dialog box appears. Click [Continue Anyway] to complete setup.



5. After the Samsung Digital Presenter program is properly installed, you can see the "Samsung Digital Presenter" icon in the desktop and "Software manual" shortcut in the [Start] menu. Also, following shortcut will be installed.

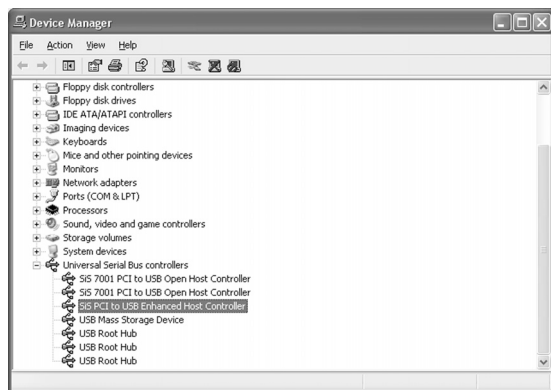


Installing Program

◆ Installation tips

● How can I check if the USB 2.0 port in my computer is enabled?

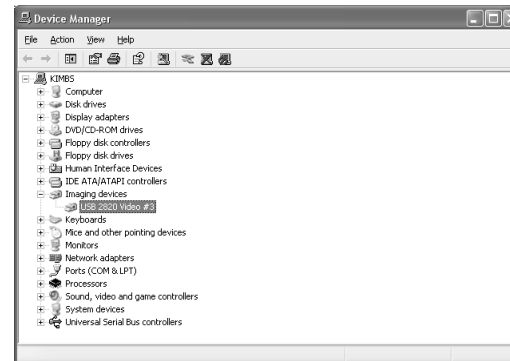
1. We will explain on the base of Windows XP. Please find the Device Manager in other Windows versions for yourself.
2. Select [Control Panel] → [System] → [Device manager] on Windows XP.
3. If you see the USB Universal Host Controller and the USB root hub installed, USB interface is properly enabled.
4. If you see the USB Enhanced Host Controller listed, USB2.0 mode is properly enabled.



● How can I remove the USB driver and the Samsung Digital Presenter program?

To remove USB driver:

We will explain on the base of Windows XP. Please find the Device Manager in other Windows versions for yourself.
Select [Control Panel] → [System] → [Device manager] on Windows XP.
Click the plus(+) icon in front of [Image device] to display the list.
Select the installed Samsung Digital Presenter SVP 5300, and click "Remove". Follow the instructions on the View panel.



To remove Samsung Digital Presenter program:

Select [Control Panel] → [Add/Remove programs]. Select Samsung Digital Presenter SVP- 5300 in the list, and click "Add/Remove". Follow the instructions on the View panel.
Run the Samsung Digital Presenter Install Program again as you' ve installed before.
Follow the instructions on the View panel.

◆ Running the Samsung Digital Presenter Program

1. Make sure that the Samsung Digital Presenter is connected to your PC and both are turned on.
2. Double click the Samsung Digital Presenter viewer icon (automatically placed on Windows desktop when you install), or select [Start] → [Program] → [Samsung Digital Presenter SVP-5300 Capture Program] on Windows XP.
3. The Samsung Digital Presenter Capture program starts to run, and the images from Samsung Digital Presenter are displayed on Windows XP.

Caution

- If the program does not run, check if your PC supports SVGA (800X600) resolution.
- While viewing captured images on the Digital Presenter program or TWAIN driver, do not turn off the presenter nor remove the USB cable from the PC. It may cause the presenter and the PC to make troubles.

◆ Using the Samsung Digital Presenter Capture Program



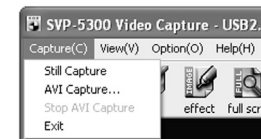
Capture Viewer



Snap window.
It shows the latest captured still images.

● Menu

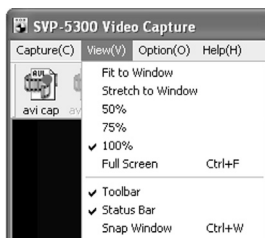
1. [Capture] menu



- 1) Capturing still picture : The picture is captured and automatically stored. When you press shortcut key [Ctrl+Q], image quick storing can be accomplished. See page 13 for details.
- 2) AVI capture : The AVI image is captured. See page 14 for details.
- 3) Stop AVI capture : It will be activated when AVI capture is started. When you press [Stop] button, AVI capture will be completed and the captured file will be stored.
- 4) Exit : The program is closed.

Using Program

2. [View] menu



- 1) Fit to window : You can see the image fitted to the window width. The ratio in length of image will be automatically adjusted according to the ratio in width, regardless of window size.
- 2) Stretch to window : You can see the image fitted to the window size.
- 3) 50% : You can see the image in 50% of original size.
- 4) 75% : You can see the image in 75% of original size.
- 5) 100% : You can see the image in original size.
- 6) Full Screen : You can see the selected image on full screen.
Full Screen ↔ Normal window short cut key : [Ctrl+F]
- 7) Tool Bar : You can make the Tool bar visible or invisible.
- 8) Status Bar : You can make the Status bar visible or invisible. When you capture a image, captured time, loss frame number will be displayed on Status bar.
- 9) Snap Window : You can see the 3 still pictures recently captured. When you double click the picture, you can save it with another name.



Caution

· Even though you adjust the window size, the original image size in Digital Presenter will not be changed.

3. [Option] menu



- 1) Video device : Only SVP-5300 can recognize it. If it cannot be recognized, the program will be automatically closed.
- 2) Video Capture size : You can select the resolution of input image; 160x120, 320x240, 640x480.
- 3) Video Compression : You can choose one of the compression modes (3-type).
 - ① No-compression :
 - You can save the captured image without compressed
 - You can capture the most definition image without damage to image quality
 - To save the image for 1 hour, 62GB storage will be required (based on 640x480, 30frame/s)
 - As the resolution gets higher and the time limit is longer, the capacity will get bigger.
 - When the HDD speed of your PC is low, frame loss may occur more frequently.
 - The frame rate is fixed as 30frame/s.
 - ② Compression (MPEG-4, high quality)
 - Compress the captured image by use of MPEG4 Codecs and save it.
 - You can select this option when you want to save the image with a lot of motion or the high definition image.
 - To save the image for 1 hour, 495MB storage will be required. (base on 640x480 30frame/s)

Using Program

③ Compression (MPEG-4, low quality)

- Compress the captured image by use of MPEG4 Codecs and save it.
- You can select this option when you want to save the image with little motion such as script or still picture.
- To save the image for 1 hour, 138MB storage will be required (based on 640x480, 30frame/s)



Caution

- When you save the compressed AVI file, if the CPU speed of your PC is low, frame loss may occur frequently or the image reconstruction time may not be matched.

4) Digital effect

- ① Video Filter : The image on Digital Presenter can be converted by use of digital effect . See 16 page for details.
- ② Preview Original Source : When you want to see the original image after applying the digital effect, select the "Preview Original Source".

4. [Help] menu

You can see the SVP-5300 Capture version and copyright.

◆ Capturing the still picture and AVI capturing

● Capturing the still picture

You can capture the image currently displayed and save it as a JPG or BITMAP format image file onto the hard disk of your PC or the diskette. The basic folder to save the image will be Digital Presenter installed folder plus QuickCap folder and the image is saved as JPG format.

1. When you want to save the image currently presented from Samsung Digital Presenter by use of SVP-5300 Capture program, select [Capture] → [Capturing still picture]. Press shortcut key [Ctrl+Q] for easier capturing.
2. When the capturing is properly completed, a snap window will be displayed on left side to show the currently captured image as small scale. When you double click the image in snap window, you can save the image as a specified name.
3. The JPG format image file will be saved in the QuickCap folder under the program installed directory.
4. You cannot specify the saved file name as you please. It will be saved as YYYYMMDDHHMMSS.jpg with reference to the present time of day.



Caution

- If the capturing still image isn't completed or AVI capturing is now under way, it will not work.
- It will be captured as specified image size set on capture card. (640x480/320x240/160x120)
- In the full screen mode, it will work only by use of shortcut key [Ctrl+Q] or [ESC].

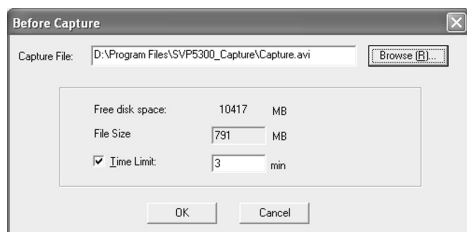
Using Program

● AVI Capturing

You can capture the image currently displayed on Samsung Digital Presenter as a rate of 30 frames per second by use of SVP-5300 AVI Capture program.

1. When you select [AVI Capture] menu, it will show the following dialog box.

For proper operation, Windows 2000/XP or higher will be required.



2. Function

When you select [Capture] → [AVI Capture], a dialog box to input the default setting for capturing will be displayed.

1) Capturing file path

Specify the file path which you want to capture. The basic folder is program installed folder.

2) Setting the AVI capturing time

You can capture the AVI image for a specified time by use of timer, and input the time in the unit of minute. The estimated capacity according to input time will be displayed for both compressed and non-compressed modes.

Caution

· The captured file capacity may be different from the estimated value according to the moving amount of image from the Digital Presenter and the frame loss while capturing.

3) Starting capture

When you select [Confirm] button, the AVI capturing will start.

If the capturing is started, [Capture] → [Stop Capturing] button will be activated, and capturing time, loss frame number will be displayed on "Status Bar".

Caution

· In case of FAT32 file system of your PC, the single file size limited by maximum 4 GB. Check your Windows file system in volume property dialog.

| | FAT32 | NTFS |
|---------------------|-------------------|----------|
| Maximum File Size | 4 GB | No limit |
| No Compression | Approx. 3.8 Min | No limit |
| MPEG-4 Low Quality | Approx. 34 Hours | No limit |
| MPEG-4 High Quality | Approx. 8.5 Hours | No limit |

※ 640 x 480, 30fps setting.

※ "No limit" of NTFS system means "File size limited only by size of volume"

◆ Digital Imaging Effect Processing (DIP)

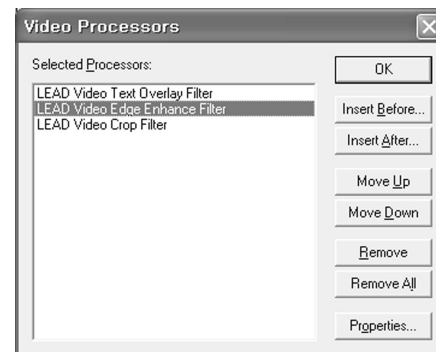
DIP produces an impressionistic effect on the transferred image through USB cable from Digital Presenter. The original image of presenter doesn't change. The DIP image is transformed just on the PC.

● Using DIP for digital image effect

1. While the image from Samsung digital presenter is displayed on PC, if you click [Option] → [Digital Effect] button, Video Processors dialog box will open.
(In case of capturing, this function is available only after stopping the capture.)



2. [Insert Before] : When you want to apply some else effect before currently selected effect.
[Insert After] : When you want to apply some else effect after currently selected effect.
[Move Up/Down] : When you want to move the currently selected effect up or down.
Double-Click [Properties] to reset the applied image status.



3. Click [Remove All] to return to original image status. Click [Option] → [DIP] button to only preview the original image.

Caution

- As many digital image effect processing are applied, the program running speed gets slower or the more drop frames will be occurred while capturing.
- We recommend to apply 1~2 effect while capturing.
- When you select [Option] → [Digital Effect] → [Preview Original Source] button, the digital image effect processing has been applied to captured image even though original image is displayed.

◆ Digital Imaging Effect Processing (DIP) functions

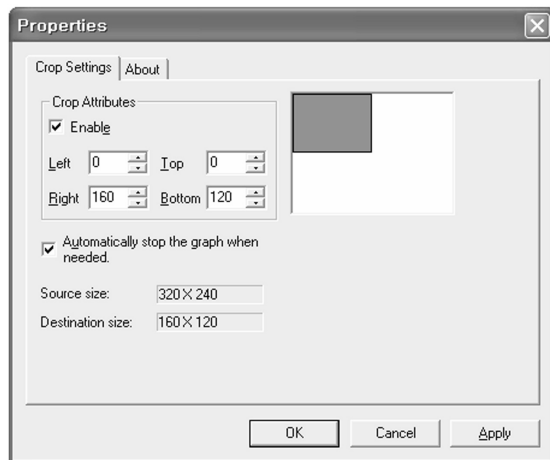
※ **Tip** : In [Properties] dialogs, the [OK] button means that the setting values are applied and saved.

the [Cancel] button means that the setting values are not applied and returned to previous status.

the [Apply] button means that the setting values are only applied and the [properties] dialog is not closed.

● LEAD Video Crop Filter

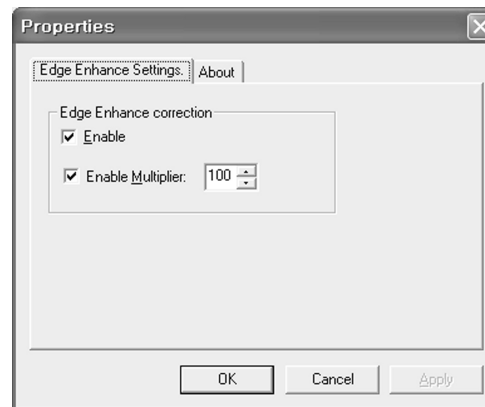
Crops the specified area of current image. You can select the lowercase area from the unit of 1x1 as minimum. You can use “Automatically stop the graph when needed” function to stop the video graph when changing the captured image size, and then to adjust the image size automatically fit to the specified area.



● LEAD Video Edge Enhance Filter

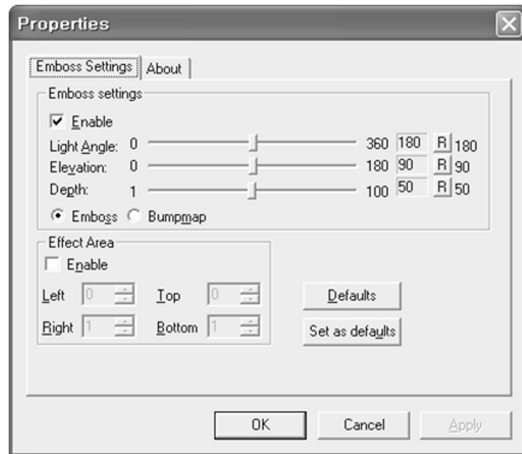
Draws the edges (outlines) of an image and emphasizes the edges. When you release [Enable], this effect will not be applied.

[Enable Multiplier] can be applied from 50 as minimum to 1000 as maximum.



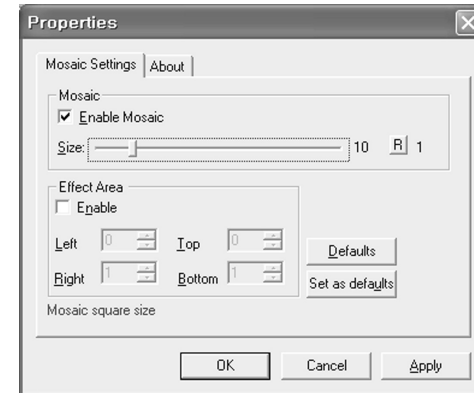
●LEAD Video Emboss Filter

Makes the current image appear raised or stamped. You can use [Light Angle], [Elevation] and [Depth] to apply the digital effect. When you click [R] button, it will return to default value, and you can adjust the value by mouse or [←], [→] keys. When you click [Bumpmap] button, color effect will be applied to the embossed image and mosaic effect will be also applied to the partial of image.



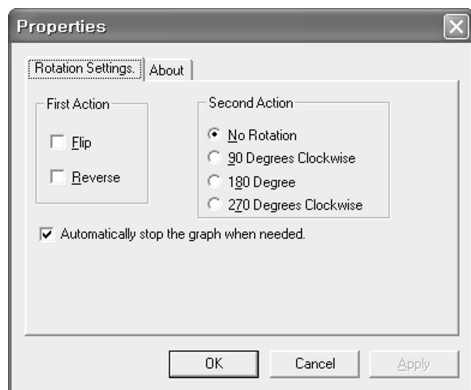
●LEAD Video Mosaic Filter

Makes the current image as if it were made up of small chips and tiles. You can set the value from 1 to 64. As the number gets higher, the mosaic size will be larger. The default value is 1 and you can adjust the value by mouse or [←], [→] keys. Mosaic effect can be applied to the partial of image.



●LEAD Video Rotation Filter

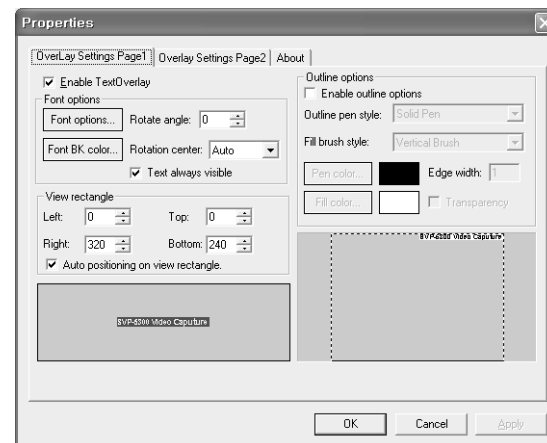
You can rotate the image easily as degrees of 90, 180 and 270. The default value is “No Rotation”. When rotating the image 90 or 270 degrees, the image will not be reduced fitting to the lengthwise size. When you click [Reverse], the current image will make a turn over right and left, and click [Flip], the current image will make a reverse up and down.



●LEAD Video Text Overlay Filter

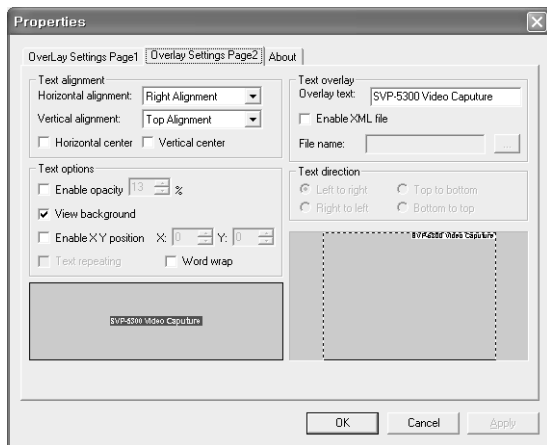
You can overlay the text on current image. Several options such as font, text location, text location when rotation filter is applied, transparency etc. can be applied.

OverLay Settings Page 1



- ① Font Options : [Font options ...] Sets the font and size of text
 [Font BK color ...] Sets the background color of text
 [Rotate angle] Sets the rotation degree of text
 [Rotation center] References the center of rotation
- ② View rectangle : It is a tab to set the area on which the text is overlaid. If the capture size of current image is changed, reset the size in order to overlay the text properly.
- ③ Outline options : It is a tab to set the outline of font.

OverLay Settings Page2



- ① Text alignment : As reference of the specified area by View rectangle in Overlay Settings Page 1, the text alignment will be set. It will be set on center as reference of right, left and landscape, or on center as reference of up, down and longitudinal.
- ② Text options : You can adjust the transparency of text by use of [Enable Opacity]. It can be set to 0~100%, and the bigger number the more transparent. If you choose [View background], the background color of text will disappear. If you choose [Enable XY position], the coordinate of text will be fixed, and the entire tap in ① Text alignment and the [Rotation center] in Overlay setting Page 1 will be deactivated.
- ③ Text overlay : It is a tab to input the user text. You can input a text by calling out the XML file.
- ④ Text direction : Selects the direction of text taken from XML file.

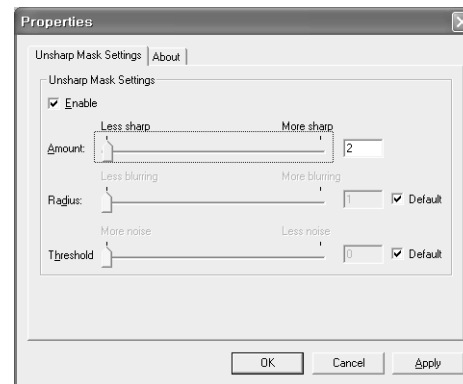
●LEAD Video Unsharp Mask Filter

Express the current image more clearly.

[Amount] sets the degree of definition, and the default value is 2 and you can set to 0-500.

[Radius] sets the radius. If the radius gets bigger, the blur will be excessive.

[Threshold] is higher, the noise is less introduced.



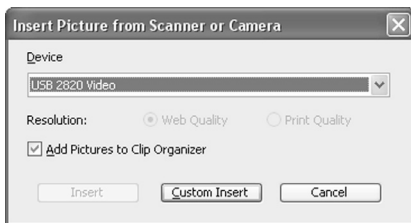
| DIP function | Save | Processing time |
|-------------------------|------|-----------------|
| LEAD Video Crop | 0 | Quick |
| LEAD Video Rotation | 0 | ↑ |
| LEAD Unsharp Mask | 0 | ↑ |
| LEAD Video Text OverLay | 0 | |
| LEAD Video Edge Enhance | 0 | ↓ |
| LEAD Video Emboss | 0 | ↓ |
| LEAD Video Mosaic | 0 | Slow |

Using Program

◆ Using Samsung Digital Presenter TWAIN Driver

1. If you want to use TWAIN driver, your PC had been installed the following system.
 - Samsung Digital Presenter USB device driver (It will be automatically installed when the USB driver is installed.)
 - Graphic application program supporting TWAIN 1.6 or higher (ex: Photoshop, ACDSEE, etc.)

※ To run the TWAIN driver, USB device driver should be installed in advance. You cannot use TWAIN driver itself to the device.
2. Select the "TWAIN driver" in graphic application program.
 - 1) Adobe Photoshop:
[File] → [Import] → [USB 2829 Video]
 - 2) JASC Paintshop Pro:
[File] → [Import] → [TWAIN] → [Select Source ...] Select USB 2820 TWAIN, and then
[File] → [Import] → [TWAIN] → [Acquire ...]
 - 3) Microsoft Office :
[Insert] → [Image] → [Scanner or Digital camera ...]
Select USB 2820 Video and then click [Customer Insert].



- 4) In the other application programs supporting TWAIN, refer to the relevant application manual.

3. Scan images through Digital Presenter TWAIN driver
TWAIN driver operates only the Still Capture functions of Samsung Digital Presenter USB program.



Caution

- In Samsung Digital Presenter TWAIN driver, you can capture and scan the image with 640x480/320x240/160x120 sizes under the preview condition (320x240 size).

Using Program

● Scanning Images



1. The images from presenter are displayed on the View panel through TWAIN driver.
Select the image size which you want to scan through TWAIN driver.
2. After selecting the size, press [Capture] button to scan it.
3. When [Capture] is completed, the captured image is transferred to the graphic application program.
4. Depending on the graphic application program, TWAIN driver may be closed or maintained after transferring the image in order to scan the image continuously. Refer to the graphic application program manual for details.

● Keyboard map

| Key | Description |
|----------|--|
| [Ctrl+F] | Toggle full screen mode and normal window mode. |
| [ESC] | Return to normal size mode. |
| [Ctrl+Q] | Capture the still picture. The image will be stored in 'QuickCap' folder under the program installed folder. While the image is captured, the other functions will be deactivated. |
| [Ctrl+W] | Make the 'Snap window' appear/disappear. If there is activated window, it will be hidden, and if there isn't, the window will appear. |
| [Alt+F4] | Exit this program. |

Troubleshooting

◆ Troubleshooting

Fail to run the Samsung Digital Presenter program

- There is a problem for USB connection between the Digital presenter and your PC.
- Make sure the USB cable is properly connected.
- Exit the program which may obstruct the Digital Presenter program (ex. the program related to USB or the program occupying lots of system resources.)
- Turn off the Digital Presenter, and turn it on again after 10 seconds, then run the program again.

There is no image displayed on View panel

- While the USB is connected, check there is "USB2820" in image device by selecting [System] → [Device Manager].
- Check there is "USB Controller" by selecting [System registration data] → [Device Manager]. If there isn't USB Controller, USB port will not be used. When you make booting your PC, enter "Environment set-up" and adjust that USB port can be used.
- Download the latest DirectX version or higher version from Microsoft Windows Update site.

The AVI display is too slow.

- If other application programs run on the system, the speed may be slower. Close the other programs. In general, make your PC restart and remove the programs occupying lots of system resources, and run this program only.

PC is turned down

- PC may be turned down due to collision with specific peripheral device.
- Select [Start] → [Setting] → [Control Panel] → [Display], and select "Advanced" menu in "Setting" item. Choose the "Troubleshooting" in sub-menu, and change the "Hardware acceleration".

The screen is stopped

- Make sure the connection condition of USB cable.
- If the USB cable is disconnected before exiting the program, it may occur.
- Make sure to close the program, and then disconnect the USB cable.

The device cannot be found

- Try to restart after rebooting the Windows. If the troubles remain even after that, remove the device (see page 7) and install the device driver (see page 3) again.

In case of USB 2.0 controller installed PC, the following error message appears (Windows XP) "HI-SPEED USB device is connected to Non HI-SPEED Hub."

- In this case, it will work as USB1.1 mode.
- In OS environment of your PC, check the USB2.0 is 'ON' condition.
- In case of Windows XP, download the latest patch (KB822603) related to USB and install it.
- Release the [Power control] in USB hub list of Control Panel so PC cannot turn off this device to save the power.
- When using this device, release the Power control (S3) function of your PC

In case of USB Controller Bandwidth Exceeded error message prompted.

- The error can occur when you remove USB plug illegally.
- Remove the USB2820 device in control panel or reboot the systems.
- This error occur rarely if you update the latest service pack from Microsoft Update site.

| Item | Standard |
|------------------------------|--|
| Interface | USB 2.0 |
| Power | OC USB 5.0V DC |
| Capture Size | 640x480 / 320x240 / 160x120 |
| Frame Rate | maximum 30 fps |
| Video Format | AVI (MPEG4 Codec compression) |
| Applied OS | SVP-5300 Capture : Windows 2000Pro, XP, 2003 TWAIN Driver : Windows 2000Pro, XP, 2003 |
| PC Requirement (Recommended) | Pentium 4, 2.4GHz / Memory 256MB / USB 2.0 terminal |

※ USB2.0 mode cannot perform at regular speed when you use it through PCI/PCMCIA type USB2.0 card on your PC.

※ The Microsoft doesn't officially support USB2.0 mode in the Windows 98/SE/ME.