

USB 2.0 VGA & LAN ADAPTER

USER MANUAL

CONTENTS

INTRODUCTION	3
FEATURES	3
SYSTEM REQUIREMENTS	3
PACKAGE CONTENTS	3
REGULATORY COMPLIANCE	3
QUICK INSTALLATION GUIDE	4
SUPPORTED COMMON DISPLAY RESOLUTION:.....	4
DEVICE DRIVER INSTALLATION WINDOWS XP	5
VERIFYING DEVICE DRIVER INSTALLATION IN WINDOWS XP	7
DEVICE DRIVER UN-INSTALLATION IN WINDOWS XP	8
DEVICE DRIVER INSTALLATION ON WINDOWS VISTA / WINDOWS 7	9
VERIFYING DEVICE DRIVER INSTALLATION IN WINDOWS VISTA / WINDOWS 7	11
FUNCTION DESCRIPTION	13
USB TO LAN:	13
USB TO VGA:	13
DISPLAY ID	13
DISPLAY RESOLUTION	13
DISPLAY ROTATION	14
DISPLAY MODES	14
IDENTIFY MONITORS	15
MULTI-DISPLAY CONTROL PANEL	16
DISPLAY SETTINGS	16
Q&A.....	17
TROUBLESHOOTING TIPS	18
Known Issues	18
General Recommendation	18
Media Playback	18
Others	19
REGULATORY COMPLIANCE	20

INTRODUCTION

Thank you for purchasing the USB VGA & LAN Adapter. The USB VGA & LAN Adapter allows you to attach additional display to laptop or desktop without annoying of taking your computer apart. It also offers the most convenient and efficient way to add network with a notebook or desktop. It is simple plug in the USB cable to connect external display and Ethernet to your computer.

FEATURES

- ◆ USB Compliant
- ◆ Plug-and-Play USB connectivity
- ◆ Standard VGA (DB15) connector to support secondary CRT/LCD monitor
 - Support monitor resolution up to 1680 x 1050, 1600 x 1200
 - Support display modes – Primary, Extended, Mirror and Rated mode.
- ◆ RJ45 connector to support 10/100Mbps Ethernet

SYSTEM REQUIREMENTS

- ◆ Available USB port
- ◆ Minimum Requirement:
 - CPU: Intel/AMD Single Core 1.2GHz or higher processor
 - RAM: 512MB memory or higher(Higher processor and memory recommended for optimal performance)
- ◆ Windows XP / Vista / 7 (32-bit and 64-bit)

PACKAGE CONTENTS

- ◆ USB VGA & LAN ADAPTER
- ◆ USB A to mini B type cable
- ◆ CD (User Manual, Driver and Utility)
- ◆ Quickly Installation Guide (QIG)

REGULATORY COMPLIANCE

- ◆ FCC
- ◆ CE
- ◆ C-tick
- ◆ VCCI

QUICK INSTALLATION GUIDE

- ★ Please do not plug the **USB VGA & LAN Adapter** into the computer system before the driver is completely installed.

Follow these steps to quickly install your new **USB VGA & LAN Adapter**

1. Insert the driver CD and follow the instructions to install the driver.
2. Make sure to restart the computer after installation completed.
3. Connect the 2nd monitor to the VGA (DB15) connector of **USB VGA & LAN ADAPTER** and switch it on.
4. plug the USB VGA & LAN Adapter into the computer, you should see the extended display on the 2nd monitors

※ please refer to your Internet Service Provider (ISP) instructions to setup your Internet connection.

SUPPORTED COMMON DISPLAY RESOLUTION:

Resolution	USB-VGA	Refresh Rate Frequency
800 * 600	16bit, 32bit	60Hz,75Hz
1024 *768	16bit, 32bit	60Hz,75Hz
1152 * 864	16bit, 32bit	60Hz
1280 * 720	16bit, 32bit	60Hz
1280 * 768	16bit, 32bit	60Hz
1280 * 800	16bit, 32bit	60Hz
1280* 960	16bit, 32bit	60Hz
1280 * 1024	16bit, 32bit	60Hz
1360 * 768	16bit, 32bit	60Hz
1400 * 1050	16bit, 32bit	60Hz
1440 * 900	16bit, 32bit	60Hz
1680 * 1050	16bit, 32bit	60Hz
1600 * 1200	16bit, 32bit	60Hz

DEVICE DRIVER INSTALLATION WINDOWS XP

Installing the device driver enables your computer's operating system to recognize the USB VGA & LAN Adapter and its ports once it's connected. Please check your operating system and refer to the appropriate installation procedure to begin installing the device driver.

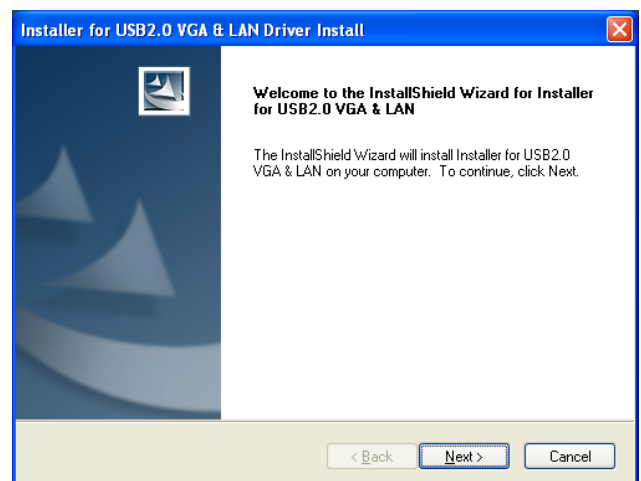
※Please make sure the USB VGA & LAN ADAPTER is **unplugged** from your PC or Notebook before executing the setup program. This section illustrates the simple device driver installation procedure for computer running Windows XP operating system.

Step 1.

Insert the accompanied CD into the CD-ROM drive; the setup program should be launched automatically. If setup program does not begin automatically, click **Start→Run**, and enter "**D:\setup.exe**" (where D: is the path of your CD-ROM drive) and then click **OK**.

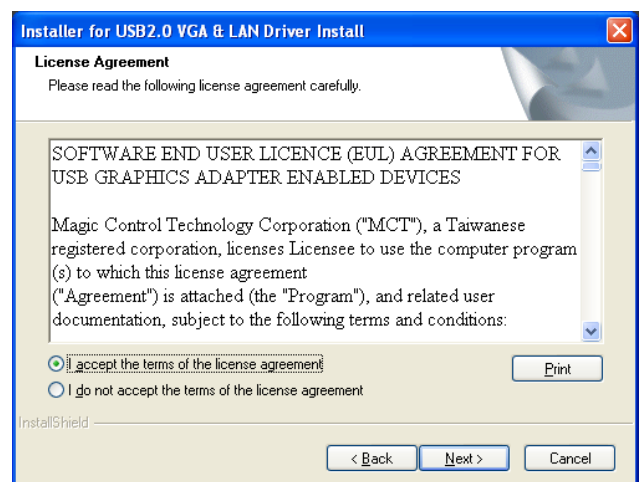
Step 2.

Driver Installation Wizard, click "**Next**" to continue.



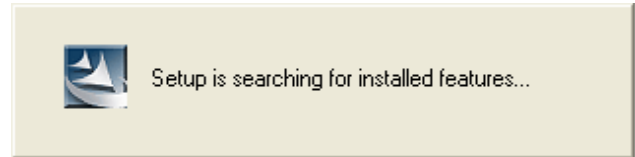
Step 3.

License Agreement; please review it and check "**I accept the terms of the license agreement.**" Click "**Next**" to accept the License Agreement.



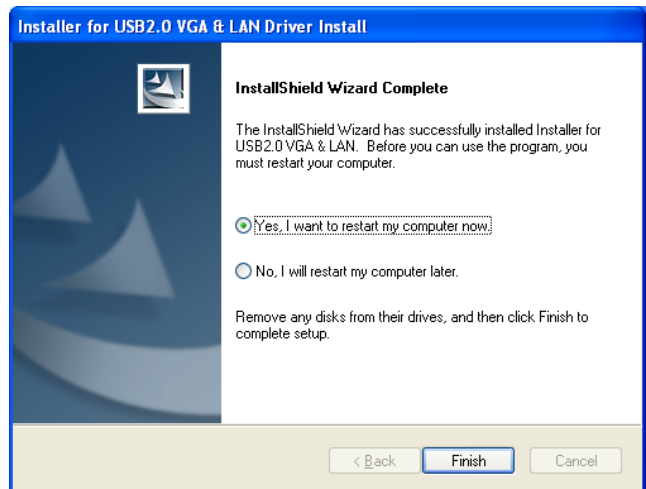
Step 4.

Setup is searching for installed features.....




Step 5

Select **“Yes, I want to restart my computer now”** and click **“Finish”** to reboot the computer.



Step 6

After reboot, plug the USB VGA & LAN ADAPTER into an available USB 2.0 port of your PC or Notebook.

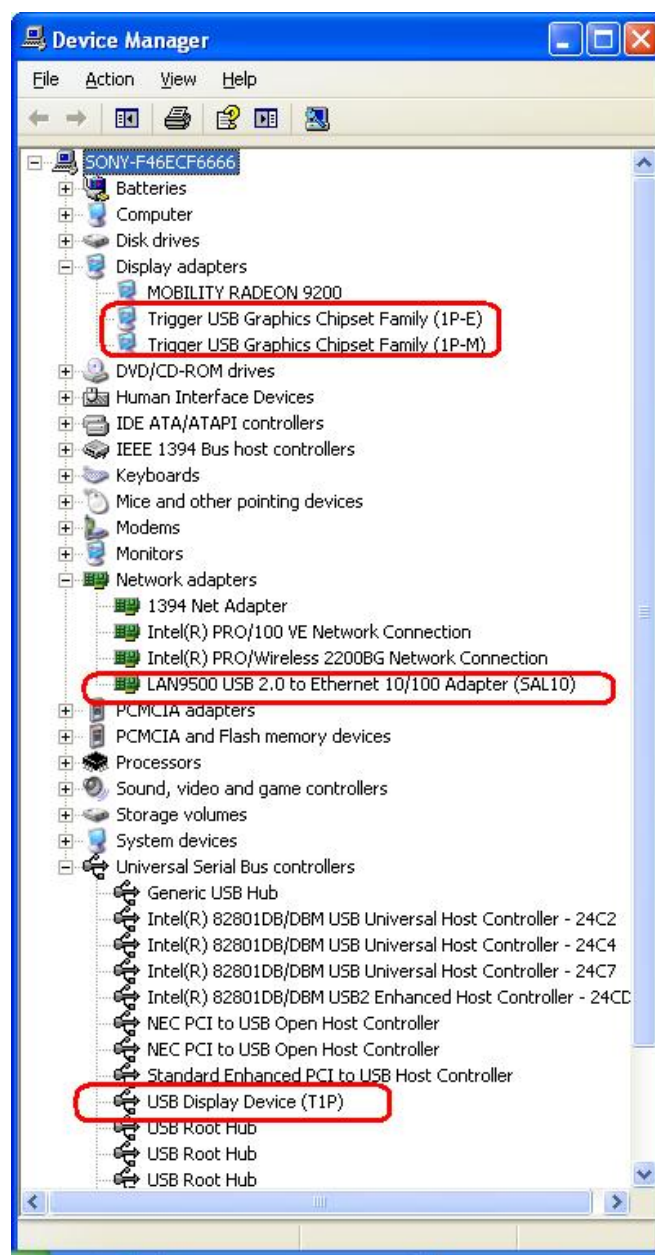
You will see an icon  on the lower right toolbar after you completed installation, and the extended display on the attached display device. The **USB VGA & LAN Adapter** is ready to use now.

VERIFYING DEVICE DRIVER INSTALLATION IN WINDOWS XP

The following procedure allows you to verify the device driver installation.

Please right click **“My computer”** → **“Properties”** → **“Hardware”** → **“Device Manager”**.

Plug-in the **USB VGA & LAN ADAPTER**, then double click **“Display adapters”**, **“Network adapter”** and **“Universal Serial Bus controllers”**, it will show the new directions as bellow,



DEVICE DRIVER UN-INSTALLATION IN WINDOWS XP

Step 1.

Start menu:

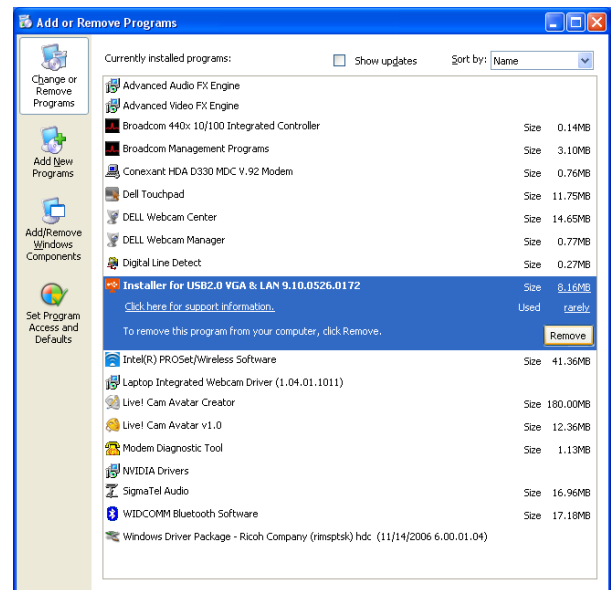
Please click **“Start”** → **“Control Panel”** → **“Add or Remove Programs”**.

Classic start menu:

Please click **“Start”** → **“Settings”** → **“Control Panel”** → **“Add or Remove Programs”**.

Select **“USB VGA & LAN 9.x.x.xxxx.0172 (driver version number)”** item.

Click **“Remove”** button.



Step 2.

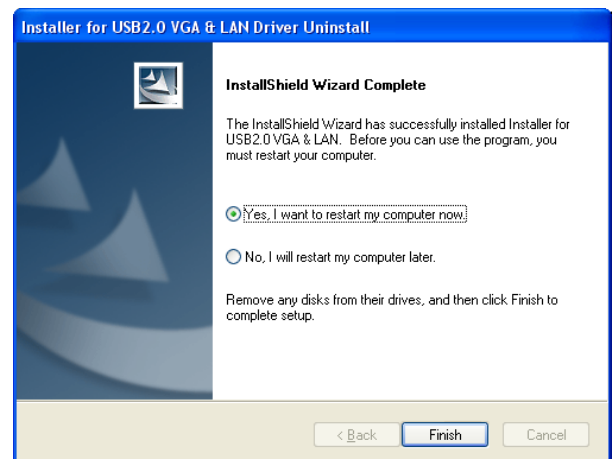
Unplug the USB GRAPHIC DOCK and click **“OK”** to continue.



Step 3.

Select **“Yes, I want to restart my computer now”** to continue and click **“Finish”** to reboot the computer.

After reboot, you will complete the driver un-install.



DEVICE DRIVER INSTALLATION ON WINDOWS VISTA AND WINDOWS 7

Installing the device driver enables your computer's operating system to recognize the USB VGA & LAN Adapter and its ports once it's connected. Please check your operating system and refer to the appropriate installation procedure to begin installing the device driver.

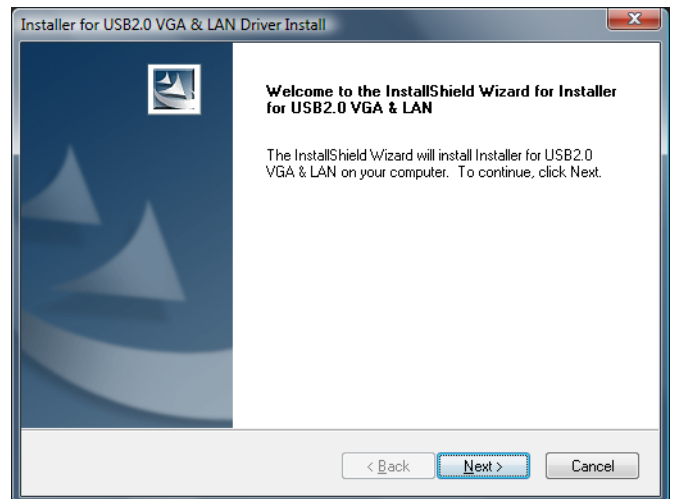
※Please make sure the USB VGA & LAN ADAPTER is **unplugged** from your PC or Notebook before executing the setup program. This section illustrates the simple device driver installation procedure for computer running Windows XP operating system.

Step 1.

Insert the Driver CD into the CD-ROM drive; the setup program should be launched automatically. If setup program does not begin automatically, click Start, Run, and enter "**D:\Setup.exe**" (where D: is the path of your CD-ROM drive) and then click "**OK.**"

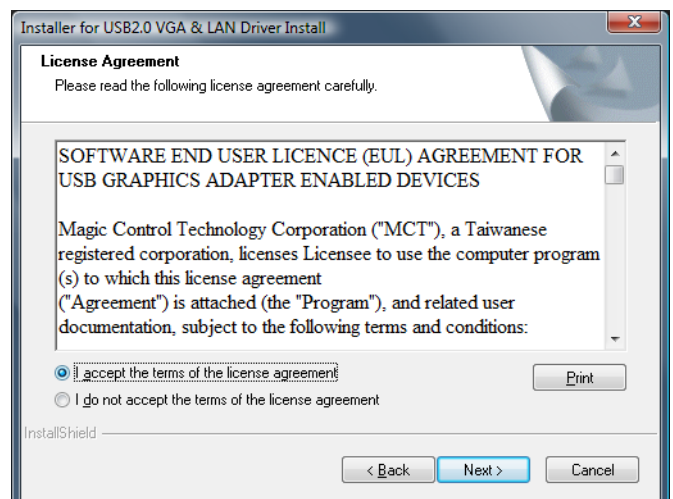
Step 2.

Driver Installation Wizard, click "**Next**" to continue.



Step 3.

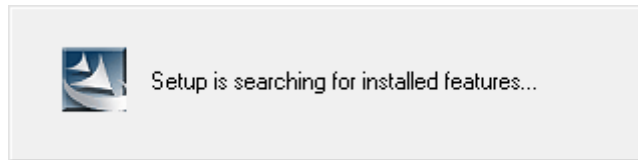
License Agreement; please review it and check "**I accept the terms of the license agreement.**" Click "**Next**" to accept the License Agreement.



Step 4

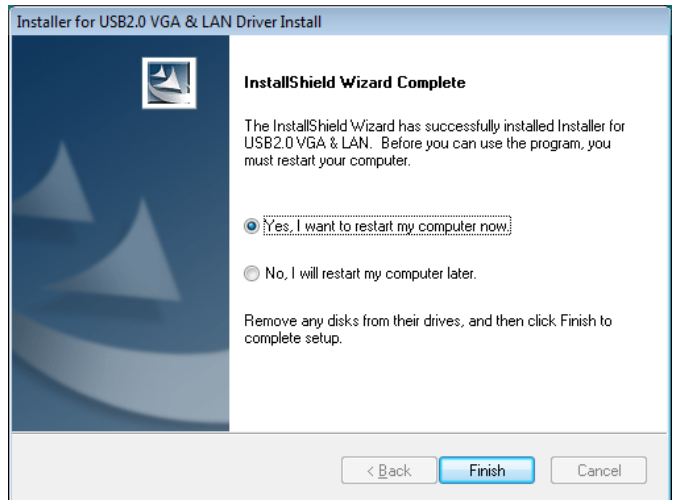
Setup is searching for installed features.....

*You may notice the screen flashes during hardware installation. It is part of the normal process.




Step 5

Select **“Yes, I want to restart my computer now”**, and click **“Finish”** to complete the driver installation.



After reboot, plug the USB VGA & LAN ADAPTER into an available USB port of your PC or Notebook.

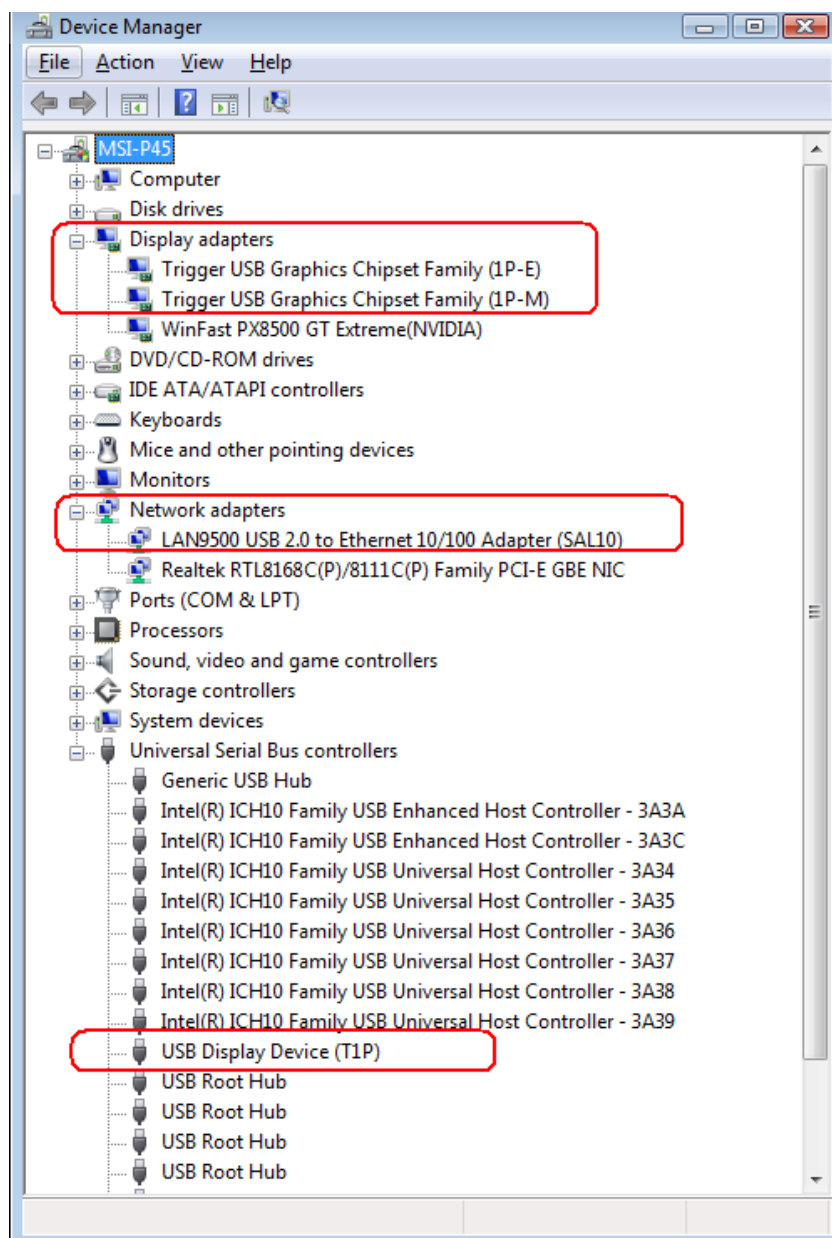
You will see an icon  on the lower right toolbar after you completed installation, and the extended display on the attached display device. The **USB VGA & LAN Adapter** is ready to use now.

VERIFYING DEVICE DRIVER INSTALLATION IN WINDOWS VISTA AND WINDOWS 7

The following procedure allows you to verify the device driver installation.

Please right click **“Computer”** → **“Properties”** → **“Device Manager”**.

Plug-in the **USB VGA & LAN ADAPTER**, then double click **“Display adapters”** , **“Network adapter”**, and **Universal Serial Bus controllers”**. It will show the new directions as bellow,



DEVICE DRIVER UN-INSTALLATION IN WINDOWS VISTA AND WINDOWS 7

Step 1

♦ Start menu:

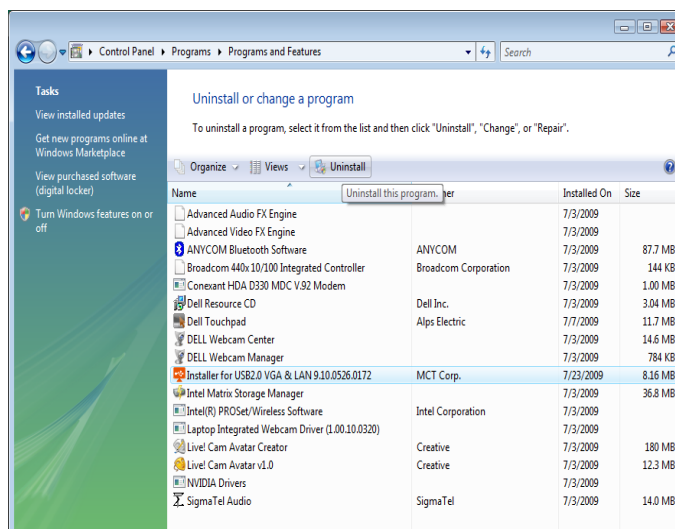
Please click **“Start”** → **“Setting”** → **“Program and Features”**.

♦ Classic Start menu:

Please click **“Start”** → **“Settings”** → **“Control Panel”** → **“Program and Features”**.

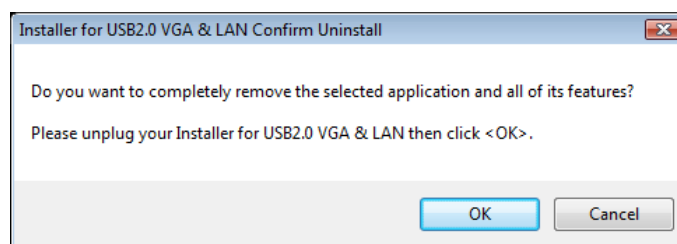
Select **“USB VGA & LAN 9.x.x.xxxx.0172 (driver version number)”** item.

Click **“Uninstall”** button.



Step 2

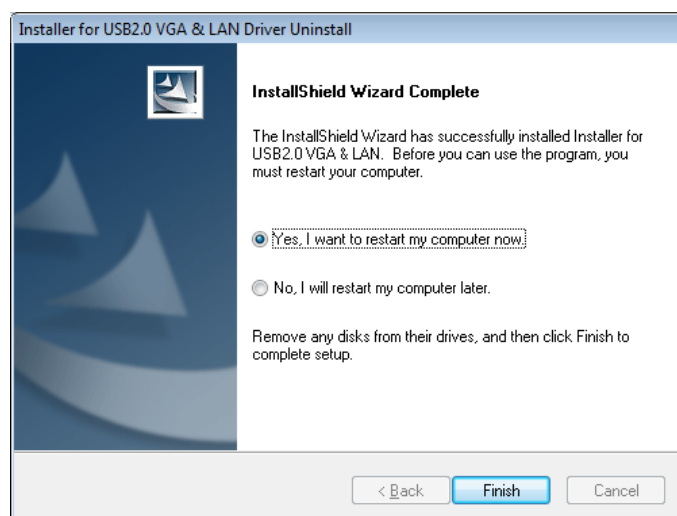
Click **“OK”** to continue.



Step 3

To select **“Yes, I want to restart my computer now”** and Click **“Finish”** to reboot.

After reboot, you will complete the driver un-installation.



FUNCTION DESCRIPTION

This section describes the main functions provided by the USB VGA & LAN ADAPTER

USB TO LAN:

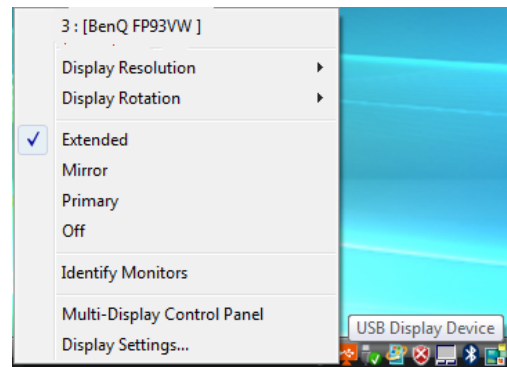
It can support the 10/100Mbps LAN transfer, and it is compliant IEEE802.3u 100BASE-TX and IEEE802.3 10BASE-T.

USB TO VGA:



To right-click the symbol to access the function table to setup the 2nd monitor by the adapter.

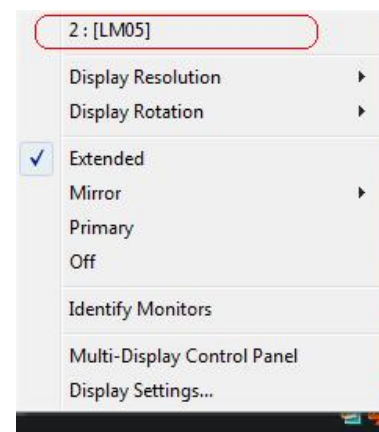
© Function description



DISPLAY ID – Smart Display Device ID Detection

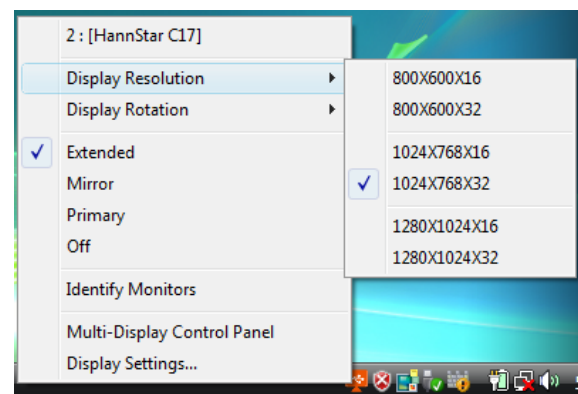
The USB VGA & LAN Adapter supports VESA defined DDC/EDID. The utility could show the **display device ID** whenever it is attached to the USB VGA & LAN ADAPTER.

If there is no display device attached to the USB VGA & LAN ADAPTER, an “**Unknown Monitor**” ID will be shown. In some cases, the attached display device does not support EDID, the ID will also be defined as “**Unknown Monitor**”.



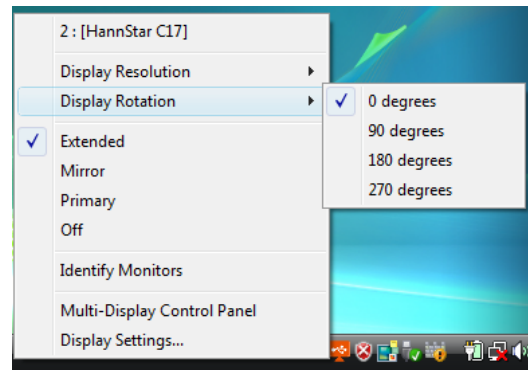
DISPLAY RESOLUTION – Fast Access to Display Resolution Setting

The default setting resolution is:
1024 * 768 * 32bit.



DISPLAY ROTATION – Fast to adjust the direction of screen

4 options available: “0°, 90°, 180°, 270° under the Extended or Primary display modes. It is a useful function for some rotatable display device.

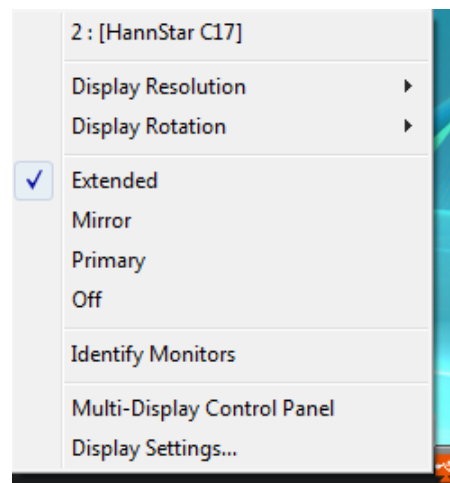


DISPLAY MODES

◆ “EXTENDED” DISPLAY MODE (DEFAULT)

A default display mode; this feature allows the attached USB Display enabled display device to work as “Extended” display of the on-board screen. The extended working space improves work efficiency.

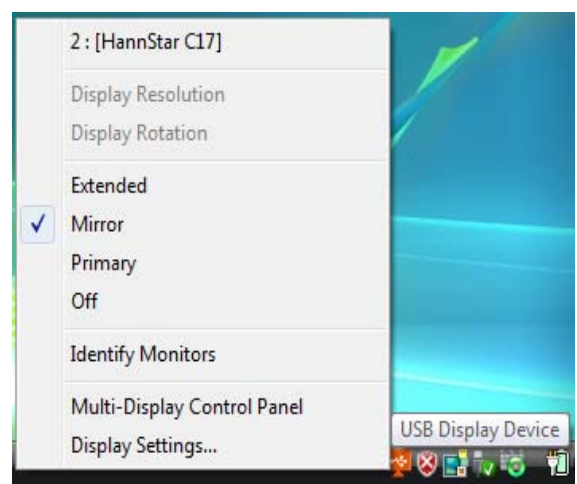
You may change the relative position of this extended USB Display enabled display device under the Display Settings.



◆ “MIRROR” DISPLAY MODE

This feature allows the same contents of on-board screen to be displayed (mirroring) to the USB Display enabled display device.

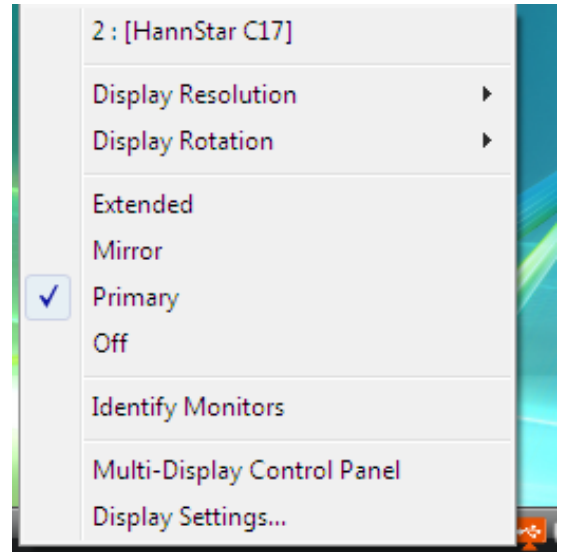
The screen resolution setting on the USB Display enabled device will follow the on-board screen’s resolution. For— example, if the on-board screen’s resolution is 1024x768x32bit, and the USB Display enabled device will set as the same resolution.



◆ **“PRIMARY” DISPLAY MODE**

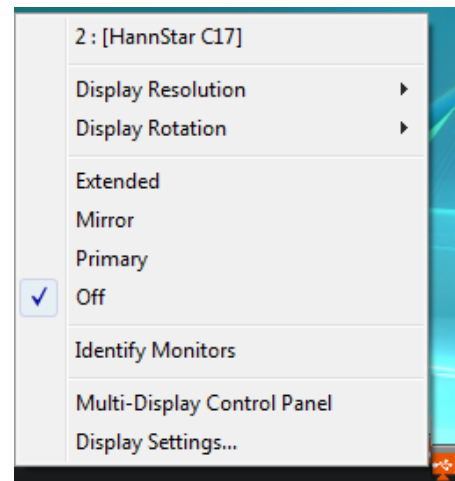
A unique feature to allow USB Display enabled device to act as the main working display. The USB VGA & LAN Adapter will work as the main graphics adapter of the system. The on-board screen will work as the extended display.

Please be advised that some display utility and drivers that shipped with certain AGP and built-in display adapters may prevent this option from working on some systems. You may disable the other utility program (usually found in the same toolbar located on the bottom right hand corner) to make this function work properly.



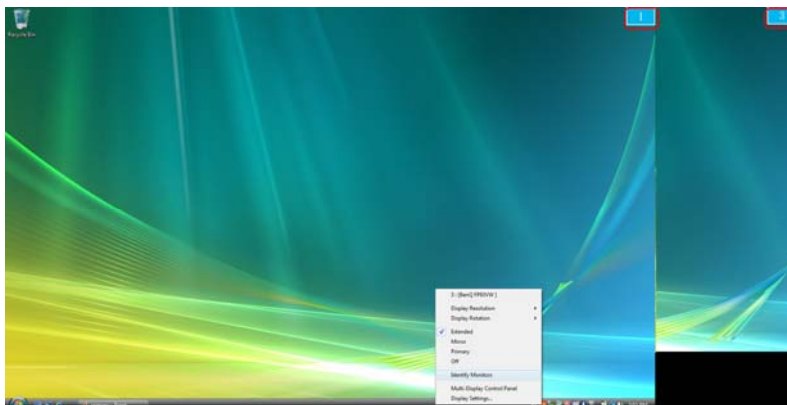
◆ **“OFF” DISPLAY MODE**

This option disables the video output from USB VGA & LAN ADAPTER.



IDENTIFY MONITORS

Easy display identification via a serial number will be showed on the upper right corner of all attached display devices.

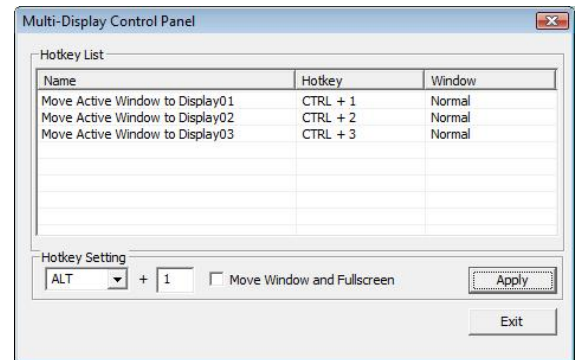


MULTI-DISPLAY CONTROL PANEL

An unique feature to allow much quicker and simpler working experience under multi-display environment. A series of hotkey to quickly move active window or cursor to the desired display device (either on-board or each USB Display enabled devices).

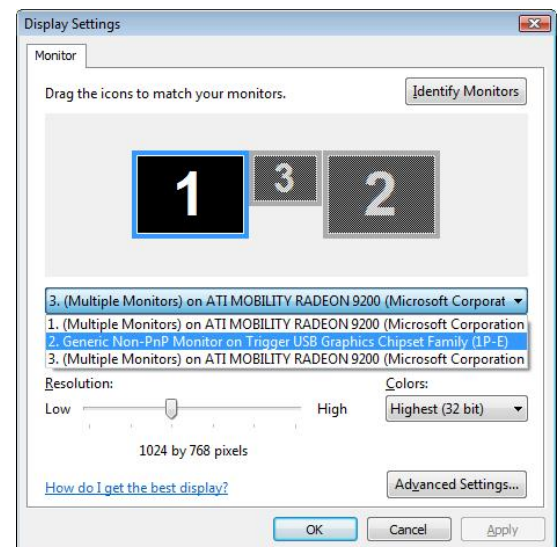
The default setting of hotkeys can be found on the Hotkey List of “Multi-Display Control Panel”.

For example: **Ctrl + 2** means: to move the window to the Display 2.

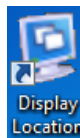


DISPLAY SETTINGS

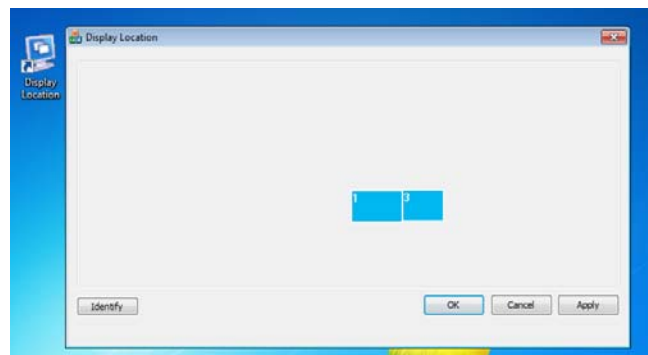
Fast access to the system “Display Settings”.



*DISPLAY LOCATION SETTING ON WINDOWS 7



1. Please find the short cut **Display Location** at the desktop of your computer, then double click it.
2. It will pop a screen sheet “Display Location”.



3. You could arrange the display location now. Then, click the “**Apply**” to set the display location on Windows 7.

Q&A

This section describes the common Q&A regarding to the installation or operation of the **USB VGA & LAN ADAPTER**.

Q: Why can't I make the USB VGA & LAN ADAPTER the primary display?

A: Some video cards ship their product with a utility that prevent other video cards from being set as the primary card. Check the bottom right hand corner taskbar for the utility. Disable the utility before switching our adapter to be the primary display.

Q: Why won't my DVD player work when I move it over to the extended display?

A: Some DVD playback software packages do not support playing on a second display adapter of any kind. You may try to open the program in the secondary display first before playing the DVD.

Q: How come my video will not play on Media Player if I move it over to the extended desktop?

A: Check that you have moved the Media Player window completely over to the second screen.

Q: Why does my mouse not move pass the right side of the screen as it should on extended desktop?

A: Check the display settings and make sure that your display number '2' is on the right side of display number '1'. You can rearrange how Windows treats each display in relation to each other in the Display Properties Settings.

Q: There are lines running horizontally up and down my screen.

A: This is due to a low refresh rate setting. You can change this in the Display Properties Settings Advanced Monitor. Make sure you select the USB VGA & LAN ADAPTER first and not set the refresh rate higher than what your monitor can support. This may damage your monitor. You can also try to reset/refresh/resynchronize your monitor.

Q: Direct3D does not work?

A: This is a current limitation of the adapter. Please check for driver updates in the future to add support for this. If your application requires this, please use the main display adapter.

TROUBLESHOOTING TIPS

This section describes the general troubleshooting tips regarding to the installation or operation of the USB DISPLAY DEVICE.

Known Issues

- Windows Vista Aero mode support will be available at MP version driver update (WDDM).
 - WDDM driver update is also aimed to resolve most of video playback compatibility issue under Windows 7.
- Direct 3D is not supported under XP. It would be supported under Windows 7 Aero mode.

General Recommendation

- Check to make sure that the device is plugged in correctly to the host system.
- Make sure that the USB port that you are using is USB.
- Unplug the USB cable of USB graphics device and re-insert it.
- Check to see that the monitor is connected correctly and is powered ON.
- Make sure to restart your computer after the driver installation.
- Try a different USB port and/or computer.
- Unplug all other USB devices from the system.
- Try connecting the USB cable of USB graphics device directly to the computer instead of through a hub.
- Reset/refresh/resynchronize your monitor.

Media Playback

- During video playback on all platforms, please do not change the display mode, position or arrangement of video player window (such as dragging the video player window between main display and attached display). This usually causes the video player to have strange behavior and the video may stop playing. We suggest stopping the video playback, moving the window to the USB graphics device attached display and then selecting the video clip to start playing.
- You may experience poor video performance on USB graphics device attached display under some low-spec PC system.
- Video rendering using hardware overlays is supported.

- Some DVD playback software packages do not support playing on a second display adapter of any kind. You may try to open the media player in the secondary display first before start playing the DVD.
- Your PC may be lack of certain video codec to support playback of certain video format. Please use the link below to install license free media codec.

K- Lite: http://www.free-codecs.com/download/K_Lite_Codec_Pack.htm

- Video/Media players have different decoding capability under different display modes. For better performance on watching DVD or certain video format on the USB graphics device attached display, it is recommended to use the following license free software.

VLC Media Player: <http://www.videolan.org/vlc/>

Media Player Classic: <http://sourceforge.net/projects/guliverkli/>

Others

- Some graphics card, i.e. Intel, prevents other secondary graphics chipset from being set as the primary card. As the result of this, *primary mode* might not work or the display maybe disabled.
- If you have problems during the boot up process, start your computer in Safe Mode and uninstall the driver. Hold the CTRL key until the Windows startup menu appears and select Safe Mode.
- To verify the driver version that you installed, please click “Control Panel” → “Add or Remove Programs” to check the program: Installer for USB VGA & LAN 9.x.x.xxxx.0172 (the number means the driver version).
- Please contact your dealer to obtain the latest driver or for additional assistance if needed.
- Some limitation exists in different media player on file format support. We enclose our compliance test result in the tables according to different operating system, main system graphics card/chipset, media players, and the supported media format. It will be updated periodically with new version of media players or our latest driver.

REGULATORY COMPLIANCE

FCC

This equipment has been tested and found to comply with Part 15 of the FCC rules. Operation is subject to the following two conditions:

- This device may not cause harmful interference
- This device must accept any interference received, including interference that may cause undesired operation.

CE

This equipment is in compliance with the requirements of the following regulations:

EN 55022: CLASS B (2006),

IEC/EN 61000-3-2 (2006), IEC/EN 61000-3-3 (1995+A1:2001+A2:2005)

EN 55024 (1998+A1 :2001+A2 :2003), (IEC/EN 61000-4-2 (1995+A1:1998+A2:2001) /-3 (2006)/-4 (2004)/-5 (2006)/-6 (1996+A1:2001)/-11 (2004))

C-Tick

This equipment is in compliance with the requirements of the following regulations:

EN 55022: CLASS B (2006), AS/NZS CISPR22 © IEC: 2005.

VCCI

This equipment is in compliance with the requirements of the following regulations:

CISPR 22 © IEC: 2005.

Disclaimer

Information in this document is subject to change without notice. The manufacturer does not make any representations or warranties (implied or otherwise) regarding the accuracy and completeness of this document and shall in no event be liable for any loss of profit or any commercial damage, including but not limited to special, incidental, consequential, or other damage. No part of this document may be reproduced or transmitted in any form by any means, electronic or mechanical, including photocopying, recording or information recording and retrieval systems without the express written permission of the manufacturer.