

User manual

# Flowmeter

Doc 1869 EN - Rev. A



# Identification

Field	Value
<b>Product type</b>	Measurement equipment
<b>Product</b>	Flowmeter 200 l/min
<b>Product reference concerned by the manual</b>	30486
<b>Documentation ref.</b>	1869
<b>Language</b>	English
<b>Creation date</b>	30/08/2012
<b>Modification date</b>	30/08/2012
<b>Review follow up</b>	<b>Rev. A (30/08/2012):</b> <ul style="list-style-type: none"><li>• Original file</li></ul>

Information contained in this document may vary from the product you received, contact our sales department if necessary.

Doc 1869 EN - Rev.A

## ● Introduction

Please read this manual before using the equipment.

Use, maintenance, or any other operation concerning the equipment must be done by persons aware about security rules and trained for the use of this equipment.

While using the equipment (use, maintenance, installation, ...) it is important to wear a security equipment appropriate to for situation.

## ● Dismantling and warranty

This equipment has a limited warranty of 1 year for any fabrication default, excepted special written agreement.

The exploded view and bill of materials are not dismantling manual.

Dismantling and/or modificaiton of the equipment outside POK factory make the warranty void.

If the equipment is repaired, the spare parts must be supplied by POK SA. If not, technical characteristics listed in this document won't be valid, the warranty will void and POK responsibility won't be usable.

If maintenance operation create damage on parts, the warranty may not work if the procedure has not be made following this document.

Only POK SA can ensure the equipment to work properly and without danger following a dismantling. This cause POK SA not to be responsible of further damage or accident following a dismantling outside its factory.

Do not modify the equipment, it may not be working or be dangerous at use.

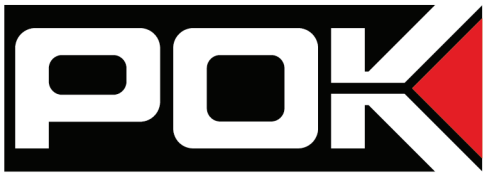
## ● Use

Please respects the technical limits of the equipment.

It is important to be aware and respect the security rules concerning your operating environnement before using the equipment.

The apparatus can not be used if part is missing or damaged.

POK SA can't be responsible of any accident following the use of this equipment is the uses and security rules concerning your operating environnement and equipment are not respected.

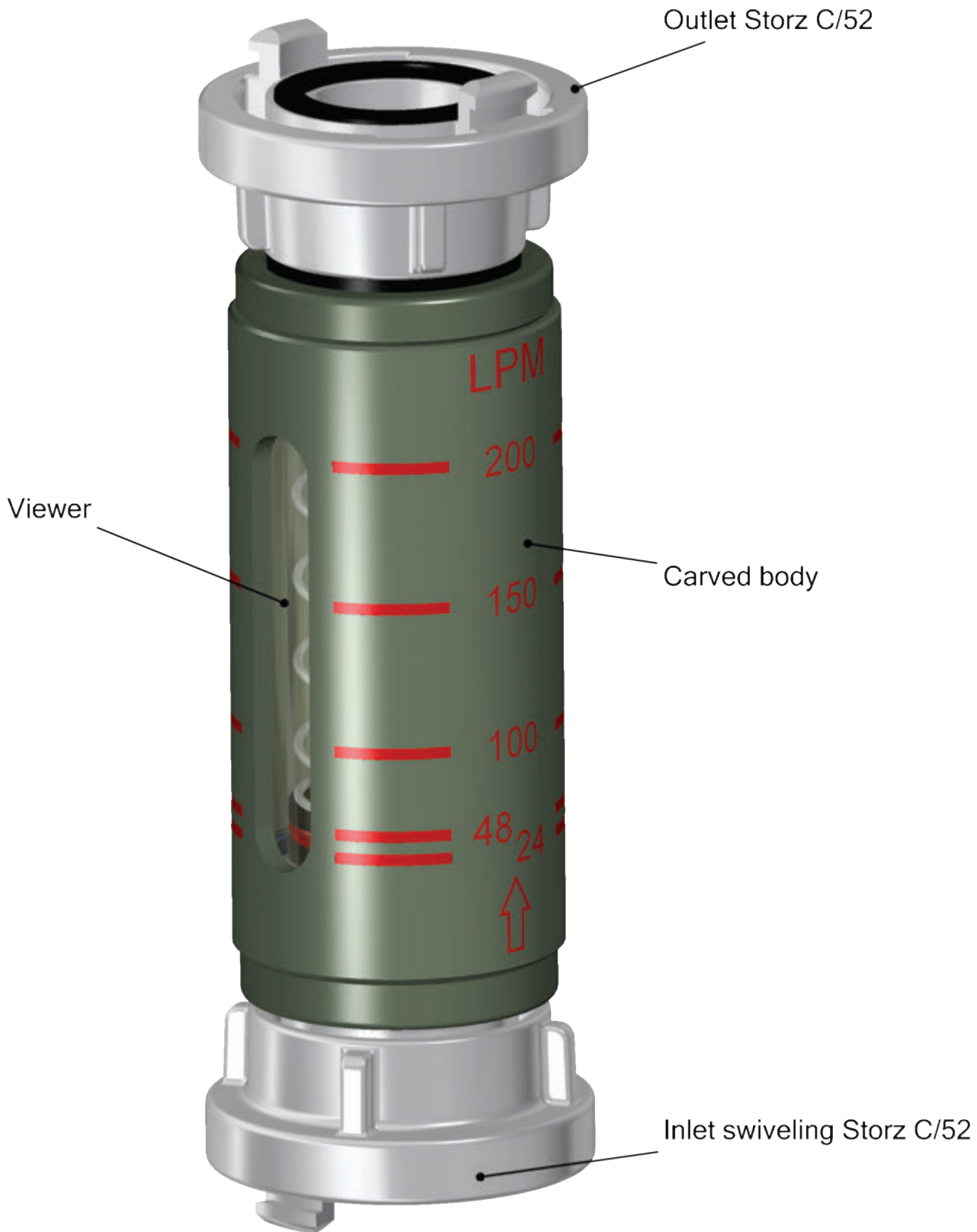


# Contents

Presentation .....	4
Characteristics .....	5
Overall dimensions .....	6
Use .....	7
Upkeep .....	8
Exploded view .....	9
Bill of materials .....	10

Information contained in this document may vary from the product you received, contact our sales department if necessary.

Doc 1869 EN - Rev.A



Information contained in this document may vary from the product you received, contact our sales department if necessary.

Doc 1869 EN - Rev.A

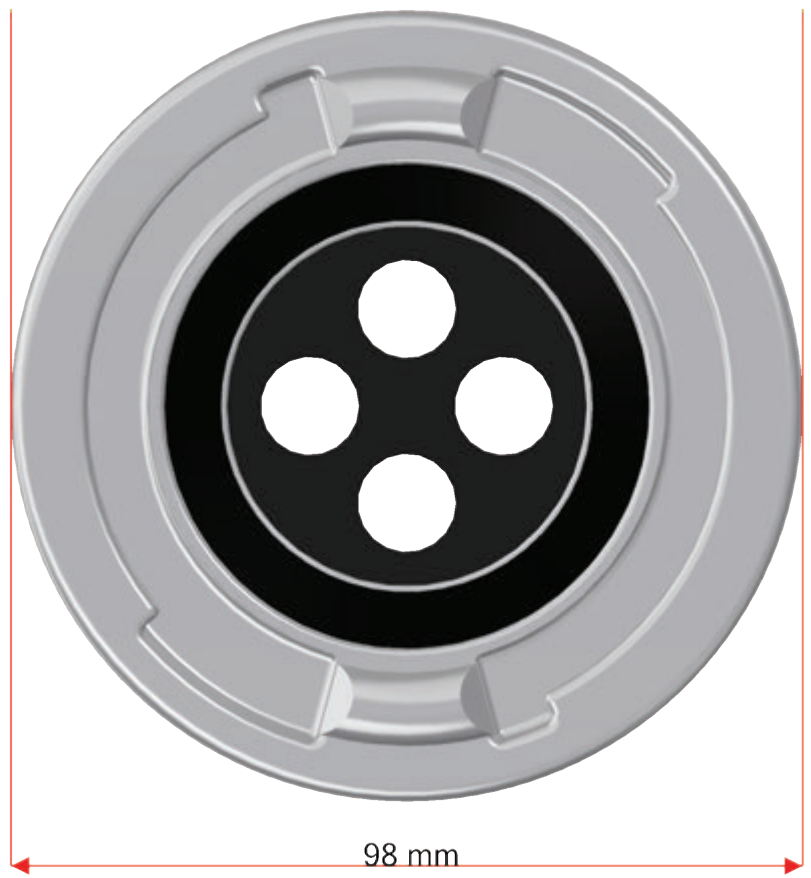
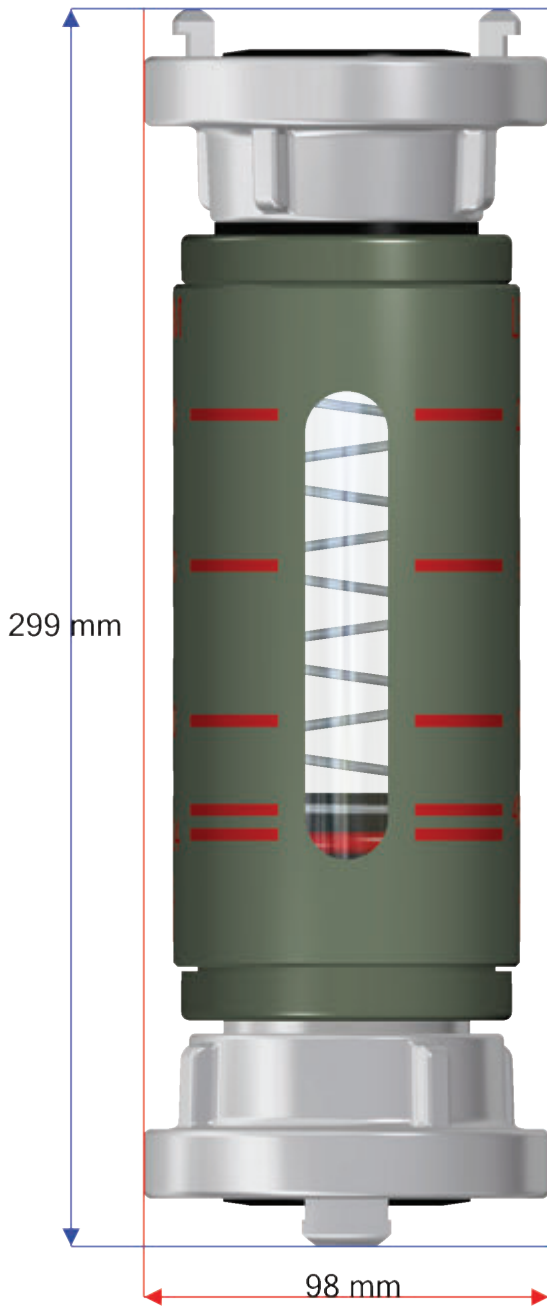
## Construction

Body	<ul style="list-style-type: none"> <li>• Aluminium alloy</li> <li>• Coating : anodization</li> </ul>
Coupling	<ul style="list-style-type: none"> <li>• Aluminium alloy</li> </ul>
Viewer	<ul style="list-style-type: none"> <li>• Borosilicates glass</li> </ul>

## Hydraulic characteristics

Inlet	<ul style="list-style-type: none"> <li>• Male thread 2"1/2 BSP</li> </ul> <p><b>Note :</b> Any type of coupling adaptable (in this case, swivel Storz C/52)</p>
Oulter	<ul style="list-style-type: none"> <li>• Male thread 2"1/2 BSP</li> </ul> <p><b>Note :</b> Any type of coupling adaptable (in this case Storz C/52).</p>
Working pressure	max. : 16 bar / 235 PSI
Flow rate	max. : 200 l/min / 50 GPM
Pressure loss	25 %
Indicator	24 - 48 - 100 - 150 - 200 (LPM)
Precision	5%

# Overall dimensions



**Weight : 2.3 Kg**

Information contained in this document may vary from the product you received, contact our sales department if necessary.

Doc 1869 EN - Rev.A

This flowmeter is a flow rate measurement device (up to 200 l/min - 50 GPM).

Connect the equipment inlet and outlet to your installation. Depending on the configuration at the order, couplings may be different from the picture in this manual.

An arrow carved on the body indicate you the water flow direction.

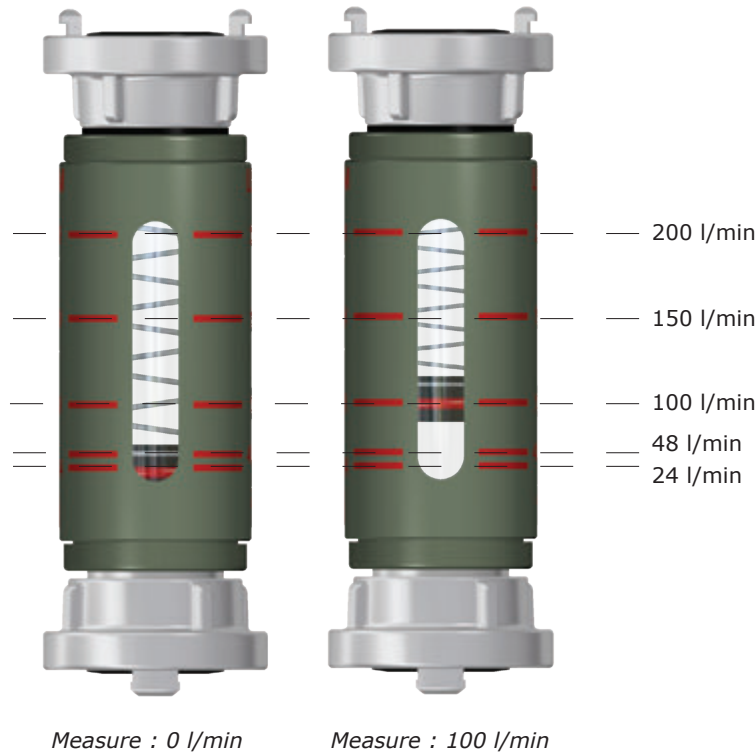
It is advised to let a straight length of hose of 1 m or 1 m 50 minimum at the inlet and outlet of the flowmeter.

Make sure everything is properly connected before putting the equipment under pressure.

While your installation is working, a piston is visible through the viewer and will be moving in accordance with the flow rate inside the flowmeter. The red gasket indicate the current flow. (cf : *Flow measurement example*).

Pressure variation between 0 and 16 bar (0 - 235 PSI) do not make the flow varying enough to be important on the measure. (precision 5%)

### Flow measurement example



**Note :** In some case, when the flowmeter is stopped, the piston may stay stuck inside. In order to free it, put the flowmeter under pressure briefly.



### • **Special care**

The flowmeter does not require special care, however it is advised to use it with clear and filtered water.

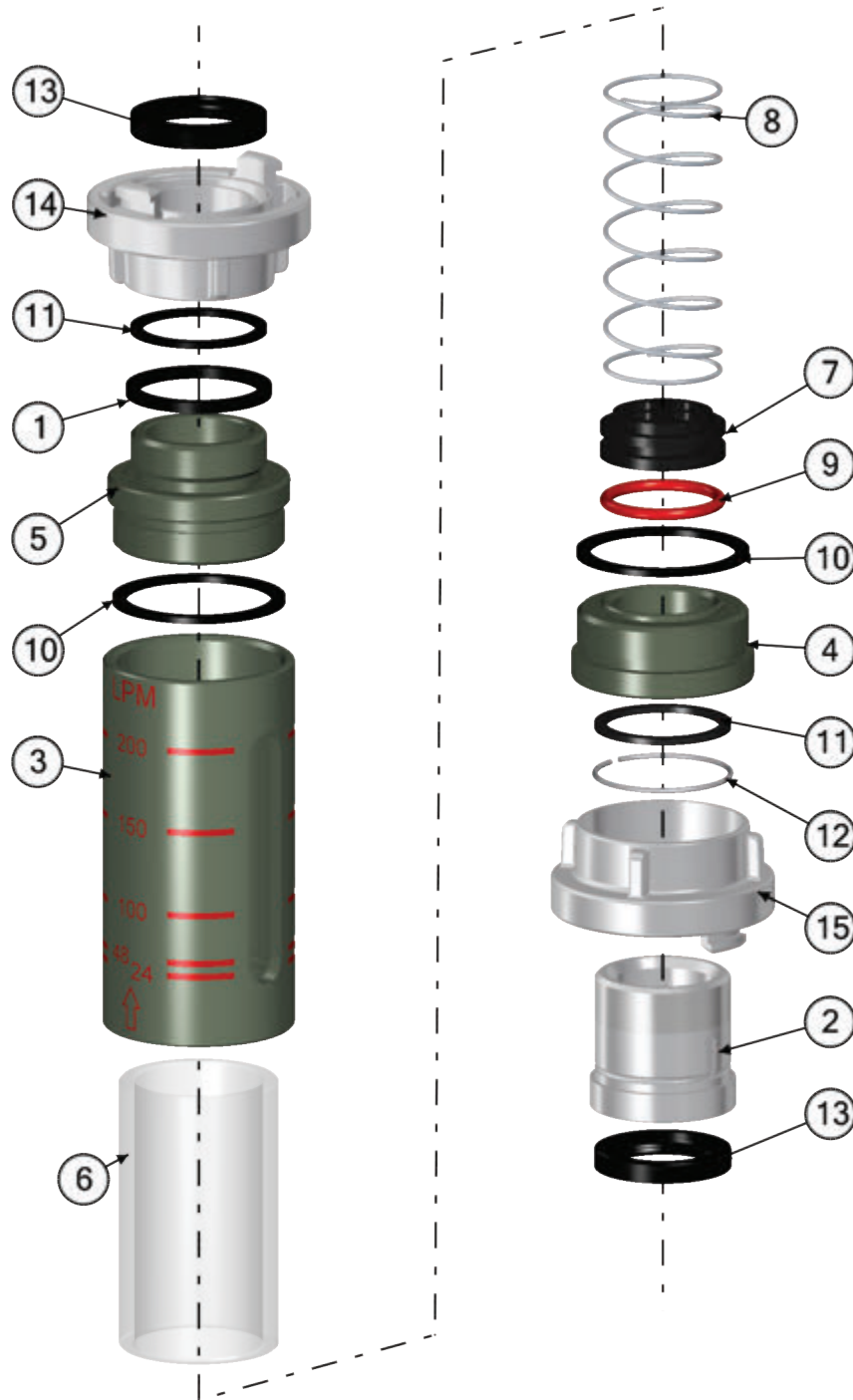
If this condition is not respected or if the apparatus was used with eductor, it is important to make it working with clear water for few minutes in order to evacuate particles and/or cleaning up the remains of corrosive products.

Please do not drop the equipment, this could damage the viewer and make the flowmeter unusable.

### • **Spare parts**

Depending on using and/or storage conditions, some parts may get damage more or less faster. Contact our sales department in order to obtain information about return or to get a price list.

Use the exploded view and bill of materials to identify precisely the parts you need.



Information contained in this document may vary from the product you received, contact our sales department if necessary.

Doc 1869 EN - Rev.A

REP	QTY	DESCRIPTION	REF
1	1	Gasket for coupling DSP DN50	6005
2	1	Socket C/52 FM G2''B	7014
3	1	Body FF G 2''1/2	30489
4	1	Adapter G2''H - G2''1/2B	30490
5	1	Adapter G2''B - G2''1/2B	30491
6	1	Viewer	30492
7	1	Piston	30493
8	1	Spring	30494
13	2	Gasket for coupling Storz C/52	-
10	2	Flat gasket 2.5'' BSP	-
11	2	Flat gasket 2'' BSP	-
9	1	Gasket R30	-
12	1	Ring Ø60	-
14	1	Coupling Storz C/52 FF 2'' H	-
15	1	Body for swiveling coupling Storz C/52	-