

# Welcome

Congratulations on purchasing UPHOTOMEASURE, Version 3. This software tool will change the way you measure your world. As with any software, proper use will give you the best results.



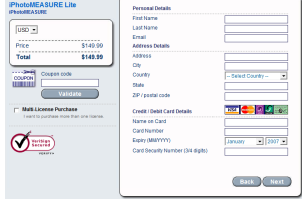
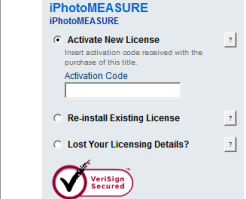
This Quick Start manual will help you get started. Please read through this manual to fully understand all the functionality of this software.

- [Welcome.....1](#)
- [Install and launch software.....2](#)
- [Taking a photo.....2](#)
- [DigiTarget.....3](#)
- [TRANSFER PHOTOGRAPHS .....3](#)
- [Use UPHOTOMEASURE .....3](#)
- [Load Photo.....3](#)
- [Select DigiTarget.....4](#)
  - [Manual Mode.....4](#)
  - [AutoDetect Mode.....5](#)
  - [Custom DigiTargets \(Generic\).....5](#)
- [Measurements.....6](#)
  - [Line Measurements Tool.....6](#)
  - [Square Measurement Tool - Area & Perimeter Auto Calculator .....6](#)
  - [Circle Measurement Tool - Area & Circumference Auto Calculator .....6](#)
  - [Undo.....7](#)
  - [Save.....7](#)
  - [Print.....7](#)
  - [Exit.....7](#)
  - [New.....7](#)
- [Multiple Tabs.....7](#)
- [Export to Image.....9](#)
- [Export to Excel.....10](#)
- [Troubleshooting & Support.....11](#)
  - [Support.....11](#)
- [Troubleshooting.....10](#)
- [Support.....10](#)

## Install and launch software

Right click mouse functions are fully available to you.

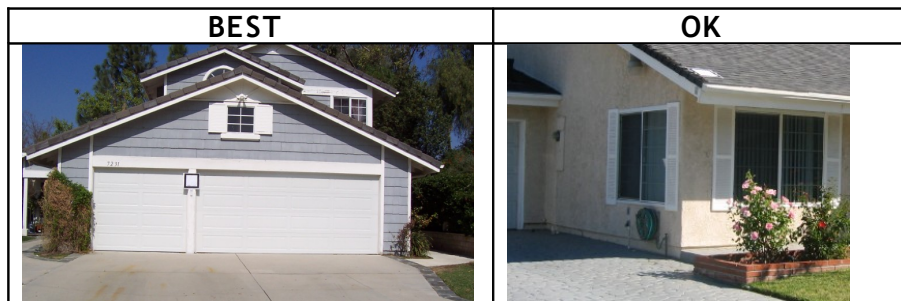
Depending on how you purchased the software you will either have an installation file on a CD or from a download. There are 4 easy steps to installing the software:

1	2	3	4
Double click on the installer icon, and follow directions.	Run the UPHOTOMEASURE program, by clicking on the desktop icon.	Purchase licenses.	Activate your license.
			

Once your software is activated you will be able to use your software at any time.

## Taking a photo

Frame the areas to be measured within the eyepiece of your camera. With version 3.0 you may take pictures where the area to be measured is at an angle, but for best results stand directly in front of the area to be measured.



## DigiTarget

A DigiTarget is a predefined dimension that may be placed in or on the area to be measured. It is

### Example 1: Interior Photo\*



DigiTarget: 8.5" x 11"  
 Distance: 8 feet  
 Angle: 65 degrees  
 Focal Length: 30mm

### Example 2: Exterior Photo\*



DigiTarget: 40' x 40'  
 Distance: 30 feet  
 Angle: 80 degrees  
 Focal Length: 50mm

recommended that as you have a larger area, the DigiTarget be at least 10% of the total surface area that is being measured.

With version 3, users can use a generic known Target within the picture i.e. a door, a window, a picture frame. Simply enter the know dimensions into the DigiTarget box when prompted.

Of course, you need to respect standard rules for taking pictures in optimal conditions including making sure of sufficient lighting conditions or using a flash. Consult your Camera's manufacturers Manual. Shoot in steady and stable conditions to avoid blurred pictures. To minimize distortion avoid using extreme ZOOMS or WIDE ANGLES.

## TRANSFER PHOTOGRAPHS

Refer to your camera user manual to transfer your photographs to your computer. If you are taking pictures with a camera phone, you can e-mail them directly to yourself or the person of your choice.

## Use UPHOTOMEASURE

Double click the UPHOTOMEASURE shortcut on your desktop to open your Software

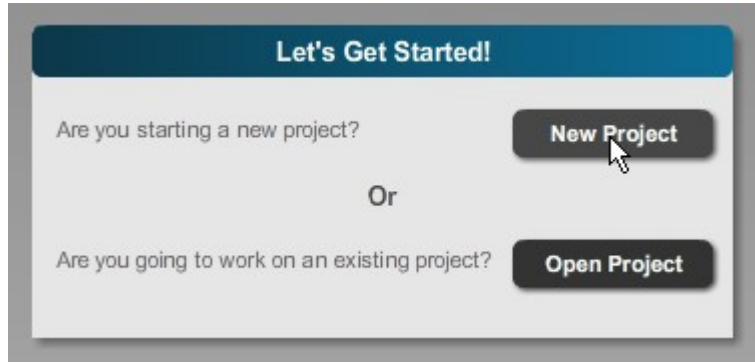


Or Click Start, then All Programs, then UPHOTOMEASURE. Each time you open the program you may be given the opportunity to watch a video on how to use

your software. This can be skipped by clicking skip or disabled, by un-checking "show again".

## Load Photo

Once you've gotten past the video, you are presented with the following two questions;



To start, we want to create a New Project, by selecting New Project the program will open a standard windows explorer where you can search your computer for a photo to measure. Find and select that photo to open it in UPHOTOMEASURE software.

### Select DigiTarget

The first thing you will need to do is select your DigiTarget. To do this we recommend zooming in as close as possible to the DigiTarget. In the upper right of your screen you will see the zoom icon on your toolbar.



Once the zoom in is selected you can either click on the center of your DigiTarget until you are zoomed in or you can click and drag a square around the DigiTarget to zoom in quickly. You will now need to reference the DigiTarget

### Manual Mode

To manually reference the DigiTarget, select Manual Mode from the DigiTarget preferences located on the right hand side of the screen.

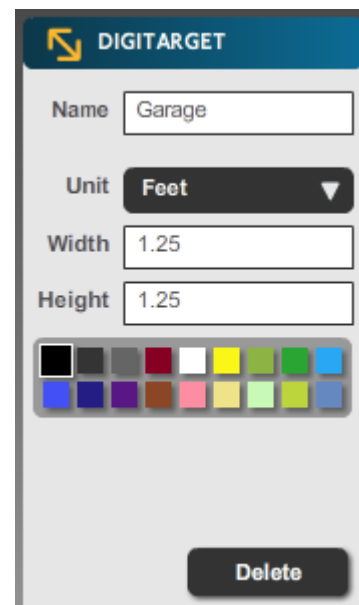


Select the DigiTarget icon from the toolbar



Now you can select the four outside corners of your DigiTarget. The more accurately you place the four corners the more accurate your measurements will be.

You will see a grid display which will allow you to see how well you have referenced the target. If the grid doesn't match the plane of the area to be measured then you will need to zoom in and reset the target.



DigiTarget. accurate

well you the area to corners of

Once you have your DigiTarget set, enter the dimensions of your DigiTarget in the DigiTarget preferences located on the right hand side of your screen. This can be in Feet or Metric.

At this time you can also name the DigiTarget. This could be named after the area to be measured, i.e. garage, front of house or roof. Notice that the name will show up on the tabs located at the top of the image. More about tabs will be discussed later.

You can also change the color of your DigiTarget by selecting a color from the color swatch in the DigiTarget preferences.

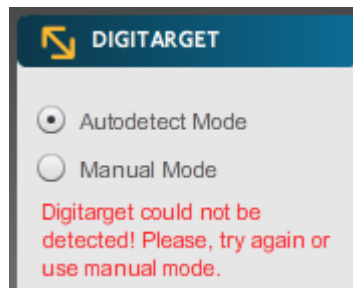
If you delete your DigiTarget, you will be able to start over by selecting the DigiTarget icon from the toolbar at the top.

### AutoDetectMode

To use the AutoDetect Mode, your DigiTarget must be very clear; with very distinct contrast in colors i.e. white with a black border are best contrasts. Select AutoDetect Mode and then select the center of your DigiTarget and the software will find the four corners of your target. It is recommended to only use this when using an UPHOTOMEASURE DigiTarget.

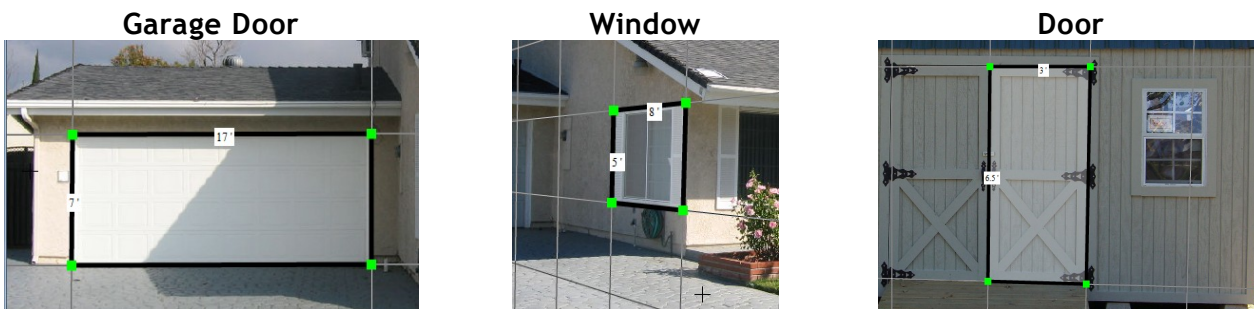
If the grid that displays does not match the area of measurement then you may have to adjust your DigiTargets four corners.

If the AutoDetect is not able to detect four corners you will see an error message:



### Custom DigiTargets (Generic)

As mentioned earlier, you can use a generic DigiTarget in your picture. This allows you to take an old picture and make measurements. You will need to know the dimensions of an item in the photo. Here are some examples of Generic DigiTargets:



If you care to use accurate auto detect DigiTargets of 1', 2' & 3' square, they are purchasable at [www.uphotomeasure.com](http://www.uphotomeasure.com) Simply select auto detect and our software will find this perfectly know size.

## Measurements

Now that your DigiTarget is referenced you can now start taking measurements. There are three types of measurement tools available, Line, Square and Circle.

**Scalable Line** - by using left mouse click a continuous scalable Number of measurements appear.

Upon left click mouse hold down over any dimensioned number that number can be dragged and moved on the screen for better viewing including the DigiTarget dimensions. You can alter the dimensions of any item by left click mouse hold down on the green end points to readjust them.

Each measurement can have the following preferences set:

- Name
- Unit of Measure (Feet or Metric)
- Color

You can see the actual measurement displayed on the photo as well as in the preferences area on the right hand side of the screen. You can also delete a measurement and start over.

As there can be several measurements on one image, it is a good practice to name each of your measurements. In version 3 Full, you can export to Excel and each dimension will be listed with its name. More about exporting to Excel later.

To get more accurate measurements you can zoom into each end of your line measurements, left click and hold the green end tab to adjust more granularly where the measurement points should start or end.

The square and circle measuring tools are only available in the Full version of UPHOTOMEASURE.

### Line Measurements Tool

Select the Line Measuring tool from the toolbar at the top. Click on the image where you want to start your measurement and drag to where you want to stop your measurement.

### Square Measurement Tool - Area & Perimeter Auto Calculator

Select the Square Measuring tool from the toolbar at the top. Click on the image where you want to start your measurement and drag to where you want to stop your measurement. Not only will you be provided the Width and Length on screen but in the right screen panel given the Area & Perimeter fully calculated for you.

Depending on how well you set your DigiTarget, you may notice that the square or rectangle you drew may not match the dimensions of the actual object being measured. If you go back and continue to adjust your DigiTarget you may improve the measurements of the square.

### Circle Measurement Tool - Area & Circumference Auto Calculator

Select the Circle Measuring tool from the toolbar at the top. Click on the image where you want to start your measurement and drag to where you want to stop your measurement. Not only will you be provided the high point and low points of your circle on screen but in the right screen panel given the Area & Circumference fully calculated for you.



The Circle Measuring tool will give you the two diameters. With some basic geometry many things can be figured out from this measurement.

## Undo

In version 3 we have added an Undo tool. This will undo the **last** task done on your project. You can locate the Undo icon in the main toolbar at the top right of your program. It is also located in the Edit pull down.

## Save

At any time you can save your UPHOTOMEASURE project. Your project and all the associated assets for the project will be stored in the same directory as the original photo. Please note UPHOTOMEASURE does not alter the original image. You can locate the save button in the File pull down or right click menus.

## Print

To print your, go to your file pull down menu and select print or you can select the icon in the toolbar. Measurements from all tabs will be displayed along with a detail of each measurement, similar to the Export to Excel which is covered a little bit later.

## Exit

A copy of the original digital photo is created. If you close your program, you will be prompted to save your project before you can exit. You can locate the exit button in the File pull down menu or click the X in the upper right hand corner to close the window.

## New

To open a new project you can select the new icon in the toolbar. If a project is already open you will be prompted to save before you can continue.

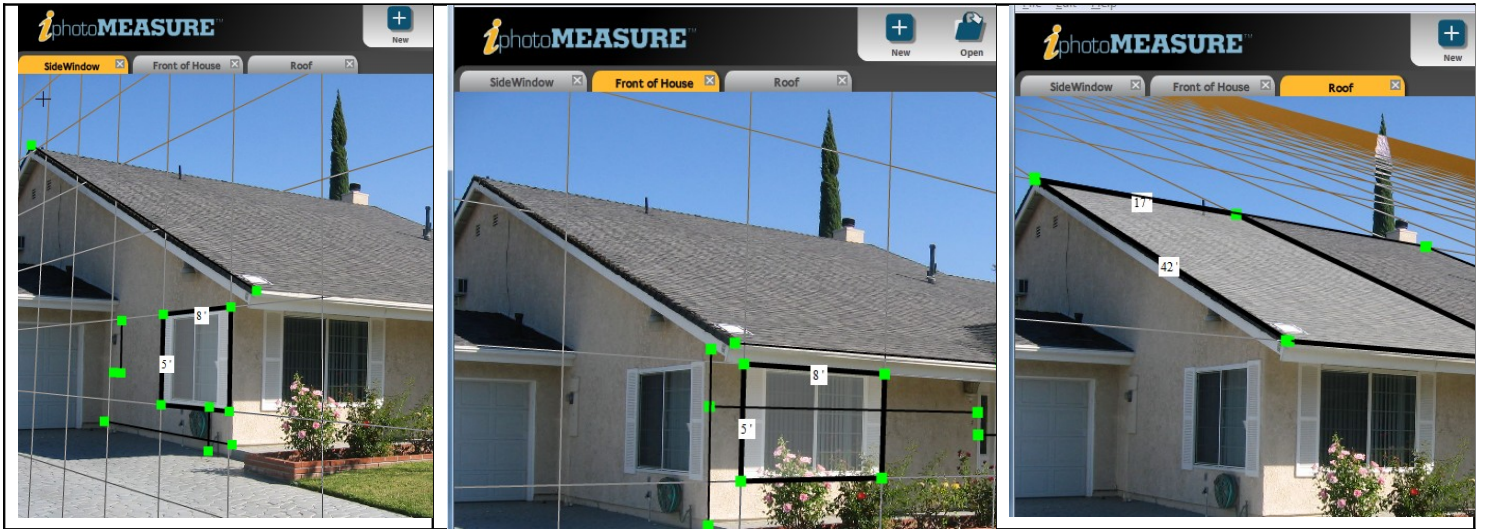
## Multiple Tabs

In version 3 one of the greatest new features is the ability to have multiple DigiTargets referenced from one picture. Just above your photo you will see three icons. The icon with the double arrowed line and plus sign adds another Tab above your picture. Each tab acts as a layer. You will not see measurements from other tabs. You can have as many tabs as you would like, but performance may degrade if too many tabs are added. Click the left and right arrow to scroll to other tabs.



Side Window	Front of House	Roof
-------------	----------------	------





## Properties

Under file, this properties window will open upon clicking on *properties*



**Project Properties**

Project Name \* Paul Minskie

Project Description in unipur surim thedhwsm dfdfwwl

Customer Bob Brown

Budget 650000

Primary Phone 888 1234567

Secondary Phone 866 1234567

E-mail paminor@uphotomeasure.com

Measurement Labels  Show all measurement labels  
 Show only selected object's measurement labels

Measurement Format X.XX' (for ex. 2.34')

Digitarget export/print  All on one page  
 One per page

Prompt for every new project

Continue Cancel

**IMPORTANT!** You must add a project name in order to save any settings.

Your entered text will be saved and exportable.

**Measurement Labels** - applies to on screen measurement labels, please select proper radio button

**Measurement Format** - please make your selection via the down arrow drop down menu

**DigiTarget export/print** - applies to the DigiTargets (less cluttered look), please select proper radio button

**Prompt for every new project** - if left unchecked you will default to your last saved Measurement Format

**Export to Image**

A new feature in Version 3 is the ability to export to image. All your measurements will be exported and added to a JPG image for you to easily email to a friend, contractor or client. To export to image simply click on the File menu pull down located in the upper left of your UPHOTOMEASURE software. Select Export to Image, if you have named your project, the File Name field will be filled out, if not you will need to give the image a name. Make sure you choose a known location to export your image. Select Export. When UPHOTOMEASURE is done processing the image, you will be returned to the software to continue with your projects.



## Export to Excel

A new feature with Version 3 is the ability to export to Excel. This feature will embed the image with all the measurements into an Excel document. To export to Excel simply click on the File menu pull down located in the upper left of your UPHOTOMEASURE software. Select Export to Excel, if you have named your project, the File Name field will be filled out, if not you will need to give the Excel file a name. Make sure you choose a known location to export your Excel file. Select Export. When UPHOTOMEASURE is done processing, you will be returned to the software to continue with your projects.

In the Excel file you will notice the project properties are listed at the top, followed by a copy of the image with all the measurements from each tab. Below the image is the detail of each DigiTargets measurements.

Each DigiTarget is identified by name and in yellow. Each measurement is referenced by a letter code and type. If the measurement had a special color associated to it, that color will be identified. Then the exact measurements are listed.

50	<b>MEASUREMENTS</b>			
51				
53	<b>DIGITARGET: Garage Door</b>		Width 17 null	Height 7 null
55	<b>A. measure1</b>	<b>Line</b>	Length 9.078 null	
56	<b>B. measure3</b>	<b>Circle</b>	Width 1.925 null	Height 0.464 null
57	<b>C. measure2</b>	<b>Rectangle</b>	Width 3.718 null	Height 2.843 null
59	<b>DIGITARGET: Side Window</b>		Width 8 null	Height 5 null
61	<b>D. measure1</b>	<b>Line</b>	Length 17.062 null	
63	<b>DIGITARGET: Front Window</b>		Width 8 null	Height 5 null
65	<b>E. measure1</b>	<b>Line</b>	Length 6.738 null	
67	<b>DIGITARGET: Roof</b>		Width 5 null	Height 6 null

You can easily print this document for displaying all the measurements to a client or for taking all the measurements and color match for a job to your local builders’ store.

When UPHOTOMEASURE exported to Excel a folder was created with all the assets and information required to create the excel document. To send the excel document you will need to include the folder that contains the images that are embedded in the Excel document.

### Troubleshooting & Support

#### Support

To get support please visit our online ticket system located at:

<http://www.UPHOTOMEASURE.com/support>

Include your contact information, details about your computers operating system, CPU and memory and detail your issue.