

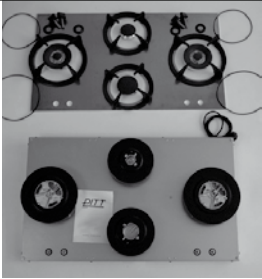
# *Assembly instructions*

---

***PITT***  
BY REGINOX



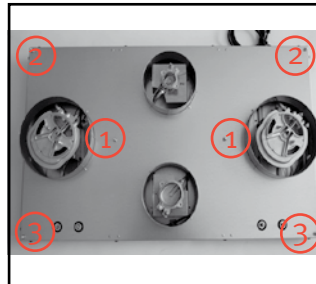
## Assembly instructions



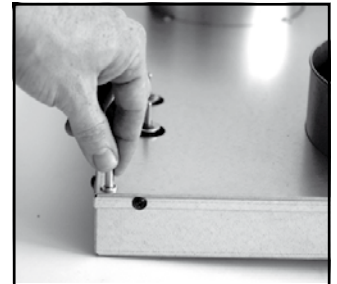
1. Overview components.



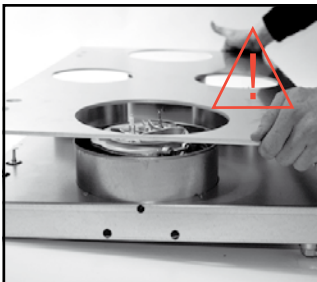
2. Press the sealing ring gently on the edge of the heat shield. Verify that the ring is not damaged.



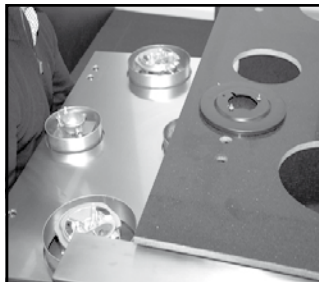
3. Overview set screws.



4. Loosen the set screws (in order position 1, 2 & 3) back to approximately 3 mm above the unit.



5. Place the heat conductor on the unit.



6. Position the unit gently under the countertop.



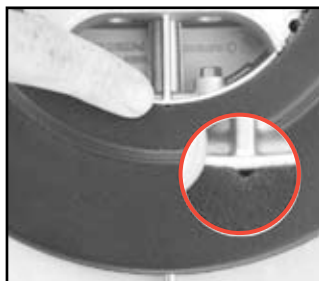
7. Place the heat shields on the burners. Make sure you use the recesses.



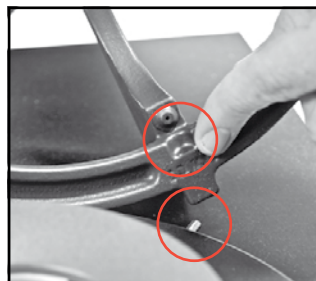
8. The 2kW and 3kW heat shield can only be placed in one position.



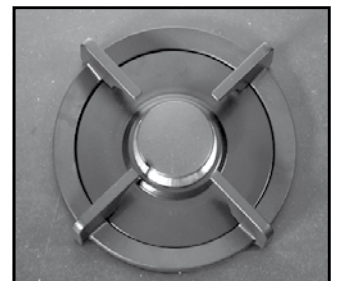
9. Attach the heat shields hand-tight.



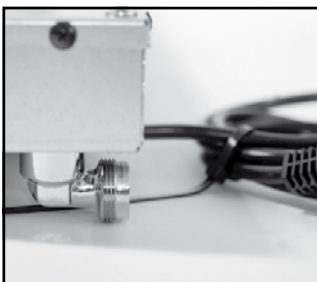
10. For the stir-fry cooker make sure that the V-shaped notch is in line with the axis of the burner.



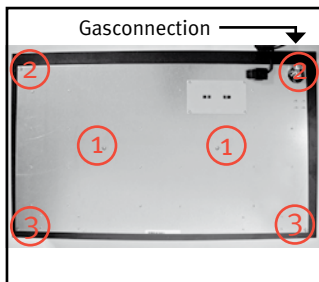
11. Make sure to place the pan carriers on the fixation pin. This provides stability.



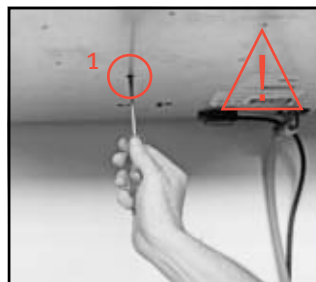
12. The burner is complete.



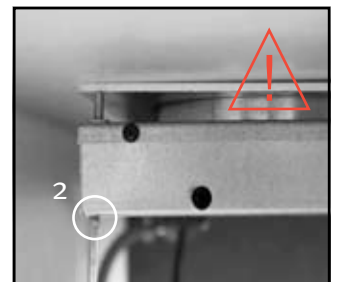
13. Connect the gas hose. Then place the plug into a grounded wall socket.



14. Overview set screws.



15. Pivot all set screws (1) hand-tight until the thermal conductor comes in contact with the bottom of the countertop.



16. Tighten both set screws (2) hand-tight until the thermal conductor comes in contact with the bottom of the countertop.





## Important!

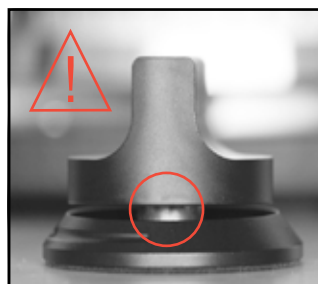
When not properly adjusted, the burners will not ignite. For warranty and the proper functioning of the cooking unit, ensure the mounting is as described in this manual to the letter.



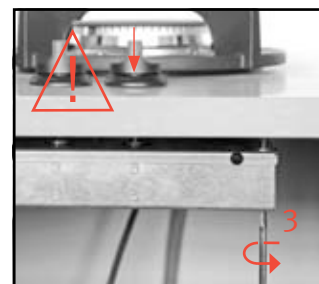
17. Positioning all sealing scales including the controls on the worksheet. Please note: first tweaking in position no adhesion yet.



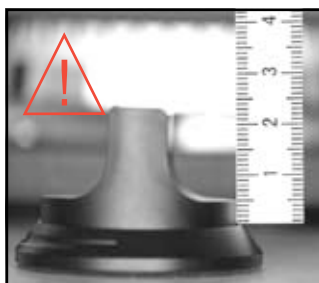
18. Press the control knob down firmly. When releasing, the control knob will be in the adjustment position (see Photo 19).



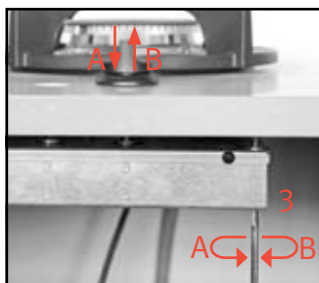
19. The bottom of the control knob is visible above the sealing scale.



20. Tighten the set screws (3) (see Photo 14) clockwise so that the control knob in the sealing scale drops.



21. Let the buttons go down until the button extends for a minimum 5 mm and up to 7 mm above the sealing scale.



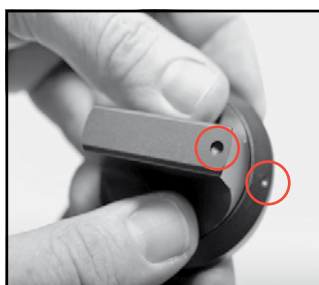
22. Check all control buttons for the right height and adjust if necessary with the set screws (3).



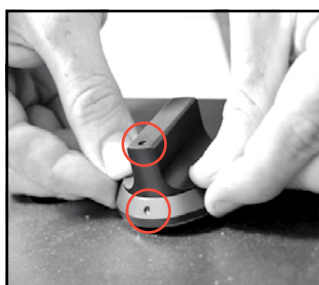
23. Check each gas burner for ignition and if they remain lit. If that is not the case then check the button height again.



24. Remove the adhesive strip from the sealing scale.



25. Plug the control knob in the sealing scale. Make sure that the indication of the button corresponds to the indication of the sealing scale.



26. Press the control knob on the gas as a whole and sealing scale and press it on the worksheet.



27. Check each gas burner for ignition and if they remain lit and/or for proper functioning. Check malfunctions on next page.

If you have any questions, you can always give us a call, or send us an e-mail.

Reginox Far East  
PITT® by Reginox  
2 Loyang Lane # 03-03  
Singapore 508913

T + 65 (0)67 88 53 63  
F + 65 (0)67 88 38 35

info@reginox.com.sg  
www.pittbyreginox.com

**Attention!** The PITT® by Reginox-system may only be connected by an approved installer. To ensure the safety and warranty repairs may only be performed by approved professionals. You should only use original parts.

| Defect                                        | Cause                                                                         | Solution                                                                                 | Manual                                |
|-----------------------------------------------|-------------------------------------------------------------------------------|------------------------------------------------------------------------------------------|---------------------------------------|
| A burner ignites and turns off again.         | The control knob is not pressed long enough to activate the flame protection. | Hold the button pressed for a few seconds after igniting.                                | See user manual.                      |
|                                               | The control knob is not adjusted at the correct height.                       | Reset the control knob.                                                                  | Assembly instructions step 19 t/m 22. |
| The control-button touches the sealing scale. | Hob is not mounted the right way under the countertop.                        | Reset the control knob.                                                                  | Assembly instructions step 14 t/m 22. |
|                                               | Sealing scale is not in the center vs. control knob.                          | Detach sealing scale and adhere again.                                                   | Assembly instructions step 25 t/m 26. |
| Spark ignition remains igniting.              | Hob is not mounted the right way under the countertop                         | Set the control knob well off.                                                           | Assembly instructions step 14 t/m 22. |
|                                               | Sealing scale is not in the center vs. control knob.                          | Detach sealing scale and adhere again.                                                   | Assembly instructions step 25 t/m 26. |
| A burner does not kindle.                     | The control knob is not adjusted at the correct height.                       | Reset the control knob                                                                   | Assembly instructions step 19 t/m 22. |
|                                               | The plug is not in the outlet.                                                | Insert the mains plug into the wall outlet.                                              | Installation instructions step 13.    |
|                                               | Fuse is defect or the central fuse is turned off.                             | Mount a new fuse or switch on the fuse again.                                            |                                       |
|                                               | Spark ignition is polluted or humid.                                          | Clean or dry the spark ignition                                                          | See user manual.                      |
|                                               | Burner parts are not mounted correctly.                                       | Put the burner parts together by the spigot.                                             | See user manual.                      |
|                                               | Burner parts are polluted or humid.                                           | Clean/dry the Burner parts. Make sure the outflow holes are open.                        | See user manual.                      |
|                                               | Main gas tap is closed.                                                       | Open the main gas tap.                                                                   |                                       |
|                                               | Control knob is not pressed long or deep enough.                              | Keep the control knob pressed long enough and sufficiently between full-and small gas.   | See user manual.                      |
| A burner is not lit evenly.                   | Burner parts are not properly placed.                                         | Burner parts are not properly placed. Put the burner parts together by the spigot.       | See user manual.                      |
|                                               | Burner parts are polluted or humid.                                           | Clean/dry the burner parts. Make sure the outflow holes are open.                        | See user manual.                      |
| Gas smells in surroundings of cooker.         | Gas connection leaks.                                                         | Check the connection. Turn main gas valve off when you're not able to fix it right away. |                                       |
|                                               | There is a burner turned on, but not ignited.                                 | Close the control knob and wait a few minutes with rekindling.                           | See user manual.                      |

## Reginox Far East

PITT® by Reginox  
2 Loyang Lane # 03-03  
Singapore 508913

T + 65 (0)67 88 53 63  
F + 65 (0)67 88 38 35  
info@reginox.com.sg  
www.pittbyreginox.com

## Reginox The Netherlands

PITT® by Reginox  
Noordermorssingel 2  
7461 JN Rijssen

T + 31 (0)548 53 56 35  
F + 31 (0)548 53 56 00  
info@reginox.com  
www.pittbyreginox.com