

Congratulations

on purchasing your O₂ Xda Zinc.

In the following quick tour, you will learn about the basics and major features of your Xda Zinc.



Table of Contents

Package contents	4
Getting to know your O₂ Xda Zinc.....	5
Layout	5
Device components description	7
The QWERTY keyboard	9
Getting your device ready.....	10
Installing the SIM/USIM card and battery.....	10
Charging the battery.....	10
Powering your device.....	11
The Today screen	11
Using the Input Panel.....	12
Input methods	12
Messages.....	13
Sending a message	13
Composing and sending a message.....	13
Using Pocket MSN.....	14
Synchronizing with Exchange Server.....	15
Personalizing your device	16

Entering owner information	16
Customizing the Start menu.....	16
Setting phone sounds (ring type, ring tone, and keypad sound).....	17
Setting theme	17
Setting Date and Time.....	17
Wireless features	19
Using WLAN (IEEE 802.11b)	19
Using Bluetooth™	19
Using a Bluetooth-enabled headset.....	20
Setting a GPRS connection	22
Connecting GPRS.....	23
Disconnecting GPRS	23
Service and Support.....	24
FAQs	25

IMPORTANT NOTE:

The figures, screens, icons and information in the following sections and chapters are only for your reference. They may not be exactly the same as what is shown on the screen of your device.

Package contents



CAUTION:

- To reduce risk of fire, use only correct battery type.
 - Do not attempt to disassemble the battery pack.
 - Dispose of used batteries properly. Inquire from local authorities for proper disposal of battery.
-

Getting to know your O₂ Xda Zinc

Layout



Components:

- 1 Stylus
- 2 Power button
- 3 Volume controller
- 4 Hold button
- 5 Mini-SD card slot
- 6 Earpiece receiver
- 7 Notification LED
- 8 Video camera lens
- 9 LCD touch screen
- 10 Talk/Send key
- 11 Left soft key
- 12 Start button
- 13 Navigation pad
- 14 Right soft key
- 15 Messaging
- 16 End key



Rear features



Right side features



Bottom features

Components:

- 17 Self-portrait mirror
- 18 Camera lens
- 19 Camera flash light
- 20 Battery compartment
- 21 Infrared (IR) port
- 22 Camera button
- 23 Earphone jack
- 24 Mini-USB connector
- 25 Microphone
- 26 Soft reset button

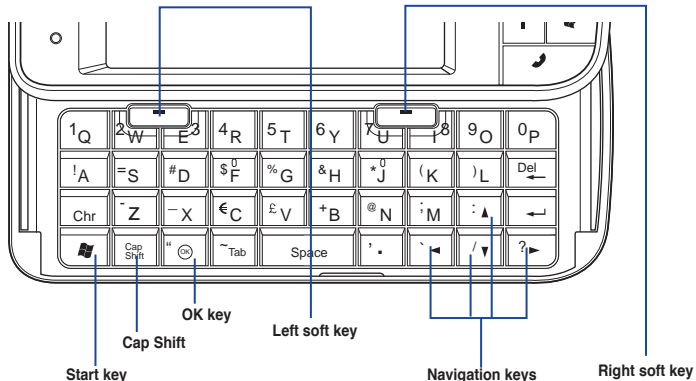
Device components description

No.	Item	Description
1	Stylus	Use the stylus to write, draw, or select items on the touch screen.
2	Power button	Press once to set suspend mode or to wake up device from sleep mode. Press and hold to turn the power ON or OFF.
3	Volume controller	Press “+” and “-” to adjust the volume.
4	Hold button	Use this button to lock the device.
5	Mini-SD card slot	Allows you to insert a Mini-SD storage card.
6	Earpiece receiver	Allows you to listen to incoming/outgoing calls.
7	Notification LED	This multi-color LED notifies the following: <ul style="list-style-type: none">• Green - WLAN (IEEE 802.11b) ON.• Flashing green - Network detected.• Red - Phone is charging.• Flashing red - Event notification.• Flashing blue - Bluetooth® ON.
8	Video camera lens	This lens is for the Video Call function.
9	LCD touch screen	This 2.8-inch, 65,536-color, 240 x 320-resolution, transreflective touchscreen TFT LCD allows you to write, draw, or make selections using the stylus.
10	Call key	Press to receive an incoming call or make a call.
11	Left soft key	Performs the command indicated above the button.
12	Start button	Launches the Windows Mobile® start menu.

No.	Item	Description
13	Navigation pad	Press this multi-directional control up, down, left, or right to move through menus, program instructions; carry out the selection by pressing the center button.
14	Right soft key	Performs the task indicated above the button.
15	Messaging	Press to quick start O ₂ MessagePlus.
16	End key	Press to end a call or to return to Today's screen.
17	Self-portrait mirror	Position your device until this mirror reflects the image you want to capture.
18	Camera lens	This 2-megapixel camera comes with flash light features.
19	Camera flash light	Allows you to capture images in a dim environment.
20	Battery compartment (Back cover)	Contains the battery that supplies power to the device.
21	Infrared (IR) port	Allows you to beam data to another device that has an infrared port.
22	Camera button	Press to launch the camera. In camera mode, press to take a picture. In video mode, press to start recording video and press again to stop.
23	Earphone jack	Allows you to listen to audio media or use the phone's hands-free kit.
24	Mini-USB connector	Use this connector to synchronize your data or to charge the battery.
25	Microphone	Allows you to talk on a phone call.
26	Soft reset button	Use the stylus to press this button to soft-reset your device.

The QWERTY keyboard

Xda Zinc provides you with a QWERTY keyboard, which is similar to a standard PC keyboard. Slide the screen panel to the right to reveal the keyboard (see figure below) .



You can follow the tips below to use the keyboard

- Use “Cap shift” key to type uppercase letter.
- Press the Left/Right soft key to perform the command shown in the label above the key.
- Press “OK” key to verify your data entries or exit the program in use.
- Press “Start” key to launch the Start menu.
- Press the navigation keys for directional movement.

Getting your device ready

Installing the SIM/USIM card and battery

Before you can make a phone call using your Xda Zinc, you need to install a Subscriber Identity Module or Universal Subscriber Identity Module (SIM or USIM) card. A SIM/USIM card contains your phone number, subscriber details, phonebook, and additional phone memory.

Charging the battery

Your Xda Zinc comes with a rechargeable Lithium-Ion battery.

New batteries come partially discharged and should be fully charged before using them. They generally do not reach their rated capacity until they have been charged and discharged at least four (4) times. We recommend that new batteries to be charged overnight even though it may indicate that the charge is complete after a few hours.

CAUTION:

Use only an O₂ qualified battery.

The bundled battery pack is shipped partially charged. Charge the battery at least four (4) hours before using for the first time.

To charge battery:

1. Connect the Universal AC adapter plug to the system connector at the bottom of the device.
2. Connect the Universal AC power plug to a grounded wall socket or power strip.

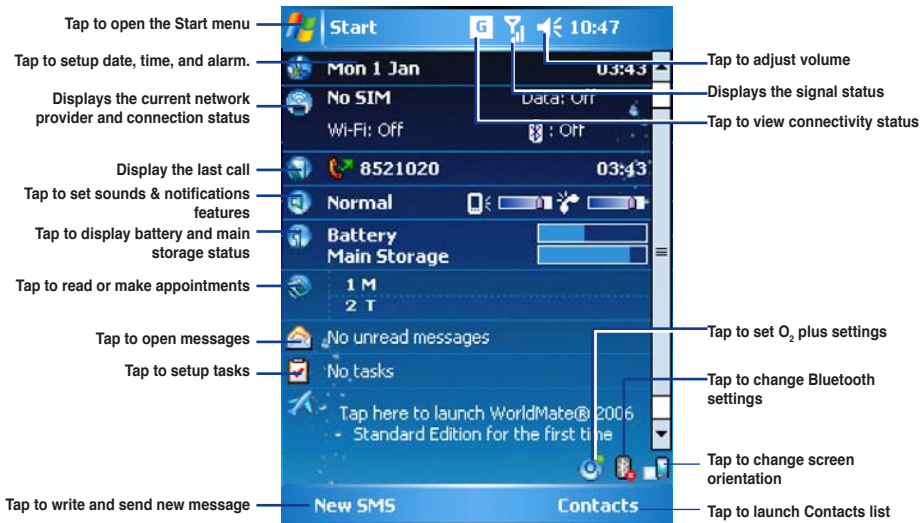


Powering your device

Make sure that your Xda Zinc is fully-charged before starting the device for the first time. Press and hold the power button.

The Today screen

Note: The screen here may not be exactly the same as yours. If it is the first time you use your device, you may want to run **O2 AutoInstall** to install and display some applications in the Today screen.

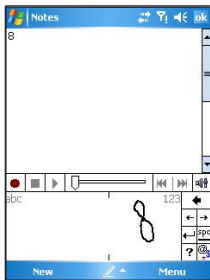


Using the Input Panel

The Input Panel allows you to select various input methods available on your device including: Block Recognizer, Keyboard, Letter Recognizer, Transcriber and XT9. In an application, tap the Input Panel arrow, then tap one of the input methods to launch it.

Input methods

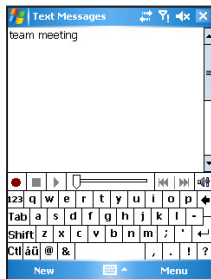
Block Recognizer



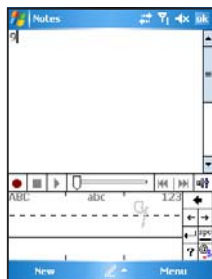
XT9



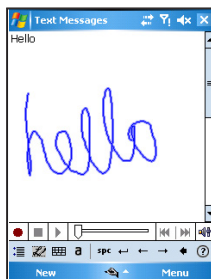
Keyboard



Letter Recognizer



Transcriber



Messages

Sending a message

Your device allows you to send and receive email, SMS, MMS, and MSN messages when connected to a network. The following describes how to compose and send a message.

Composing and sending a message

1. Tap **Start** then **Messaging**.
2. Tap **Menu** > **Go To** then select account:
 - Text Messages
 - Outlook E-mail or
 - MMS

In the screen that appears,

3. Tap **New**.
4. Key in the email address or phone number of one or more recipients, separating them with a semi-colon. To launch Contacts list, tap **To**.
5. Key in your message.
6. Tap **Send** after you finish the message.



Using Pocket MSN

1. From the Today screen, tap the MSN icon or tap **Start > Programs > Pocket MSN** to launch Pocket MSN.
2. Key in the e-mail address and password, then tap **Sign In**.
Tap to check **Save password** box to save password.
3. Follow succeeding screen instructions to setup Pocket MSN.



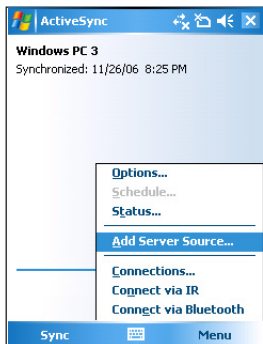
NOTE:

- To use MSN Messenger, you need a Microsoft .NET Passport. Go to www.passport.com to obtain a Passport.
 - GPRS will automatically reconnect when your Pocket MSN status is online.
-

Synchronizing with Exchange Server

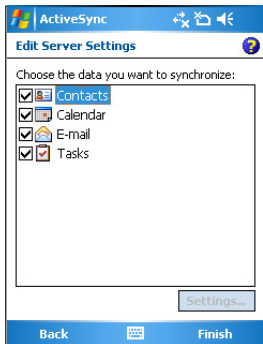
Before you can synchronize your device with an Exchange Server, install the Microsoft® ActiveSync™ to your computer using the Getting Started Disk. ActiveSync™ is the software that synchronizes your device with a Windows® based computer. Your device comes with a preinstalled ActiveSync™. To synchronize your device with Exchange Server:

1. From the ActiveSync menu, tap **Menu > Add Server Source**.



2. In the Server Address field, input the name of the server running Exchange Server then tap **Next**.
3. Input your user name, password, and domain then tap **Next**.

4. Tap the check boxes to select the data items that you want to synchronize with Exchange Server. To change the available synchronization settings, select a data item then tap **Settings**. Tap **Finish** when done.
5. Start the sync process.




Personalizing your device

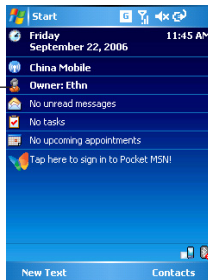
You can customize the look and feel of your device according to your desired settings.

Entering owner information

To update the owner information:

1. Tap **Start** > **Settings** > **Personal** tab then tap the **Owner Information** icon or tap the  icon on the Today screen.
2. Key in information.
3. Tap **ok** when done.

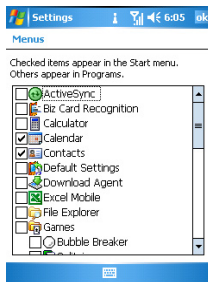
Tap to set owner information



Customizing the Start menu

To customize the Start menu:

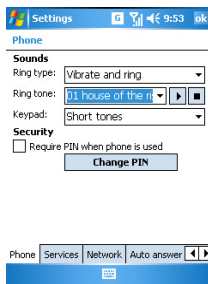
1. Tap **Start** > **Settings** > **Personal** tab.
2. Tap the **Menus** icon.
3. Check the items that you want to appear on the menu.
4. Tap **ok** when done.



Setting phone sounds (ring type, ring tone, and keypad sound)

To setup your phone sounds:

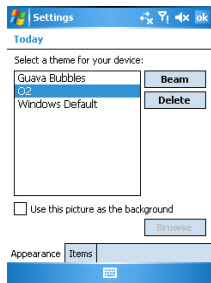
1. Tap **Start** > **Settings** > **Personal** tab.
2. Tap the **Phone** icon.
3. From the Phone screen, tap **Ring type** box to select desired ring type.
Tap **Ring tone** box to select desired ring tone.
Tap **Keypad** box to select keypad sound.
4. Tap **ok** when done.



Setting theme

To setup theme:


1. Tap **Start** > **Settings** > **Personal** tab > **Today**.
2. Select a theme from the list.
Tap the **Use this picture as the background** check box if you want to use this picture as device screen background.
3. Tap **ok** when finished.



Setting Date and Time

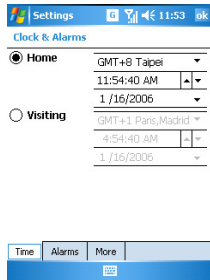
You can launch the Date and Time screen directly from the Today screen.

To edit date and time:

1. Tap the clock  icon on the Today screen or tap **Start > Settings > System > Clocks & Alarms**.
2. Select the correct time zone and change the date or time.

NOTE:

During synchronization, the date and time on your device is updated with the date and time on your computer.



Wireless features

Using WLAN (IEEE 802.11b)

To activate WLAN in your device:

1. Tap **Start > Settings > Connections** tab then tap the **Wi-Fi Manager** icon.
2. From the Wi-Fi Manager screen, tap **Menu** then **Turn Wi-Fi On**.

You can also turn Wi-Fi ON or OFF from the Status bar.

1. Tap the Signal icon on the status bar.
2. Tap Wireless Manager.
3. Tap the Wireless LAN icon to turn the Wi-Fi ON or OFF.

IMPORTANT:



- When WLAN is used simultaneously with the GPRS, the WLAN will get signal priority. We recommend not to use WLAN and GPRS at the same time.
 - We recommend not to use WLAN and the Bluetooth function at the same time. It may cause disturbance in data transmission since both use the same wireless channel.
 - The WLAN and USB connections cannot be used at the same time.
 - When the battery power is less than 20% the device prompts a warning message whether to continue using WiFi or not. Tap "Yes" to continue using or "No" to disconnect. We recommend that you plug the power adapter immediately to avoid losing data.
-

Using Bluetooth™

To activate (turn ON) Bluetooth in your device:

1. Tap **Start > Settings > Connections** tab then tap the **Bluetooth** icon.
2. From the Bluetooth screen, tap **General** tab.
3. Tap **Turn on** button. The Bluetooth status is displayed above the **Turn on/Turn off** buttons.

You can also turn Bluetooth ON or OFF from the Today screen. To do this:

1. Find the Bluetooth icon  at the bottom right corner of the Today screen.
2. Tap  to display shortcut menu then tap **Turn Bluetooth OFF**.


The Bluetooth icon changes to  if Bluetooth is turned Off.

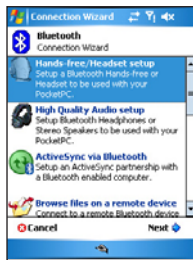
NOTES:

The Bluetooth device setup instructions provided in this section may differ with other Bluetooth devices. If the instructions in this guide differ from the documentation that came with your Bluetooth-enabled device, follow the latter.

Using a Bluetooth-enabled headset

Mono headset setup

1. Make sure that Bluetooth is enabled on your device.
2. Tap  on the Today screen then on the shortcut menu tap **Bluetooth Manager**.
3. From the Bluetooth Manager, tap **New**.
4. From the Connection Wizard, tap **Hands-free/Headset setup** then tap **Next**.
5. Make sure that your headset device is in pairing mode and ready to receive incoming connection requests then tap **Next**.
6. Tap the name of your Bluetooth-enabled headset device.
7. In **Passkey**, input the alphanumeric passkey of your headset device then tap **OK**. You can find this in the documentation that came with your headset device.
8. Tap **Finish**. You are now ready to use your headset device.




NOTES:

If the connection between the device and a Bluetooth headset fails, press the device icon then choose "Connect", you do not have to pair the devices again

Stereo headset setup

Your device supports A2DP (Advanced Audio Distribution Profile), which is used by Bluetooth-enabled stereo headsets. Make sure that your stereo headset also supports A2DP.

1. Tap  on the Today screen then on the shortcut menu tap **Bluetooth Manager**.
2. From the Bluetooth manager screen, tap **New** then select **High Quality Audio Setup**.
3. Make sure that your stereo headset device is in pairing mode and ready to receive incoming connection requests then tap **Next**.
4. Tap the name of your stereo headset device then tap **Next**.
 - If you want to create a shortcut, tap the check box **Create a shortcut for this connection** then input a connection name.
 - If you want to use a secure connections, tap the check box to **Use a secure, encrypted connection**.
5. Tap **Finish** to initiate connection.

IMPORTANT:

To answer a phone call using your stereo headset, make sure that you have mono and stereo connection at the same time.

NOTE:

To use voice commander while using a headset, press the answer button on the headset then follow given instructions.

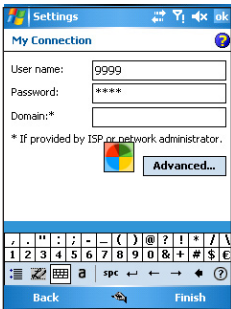
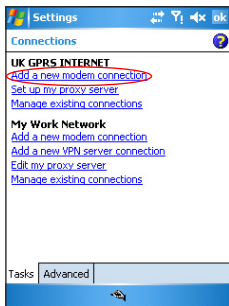


Setting a GPRS connection

1. From the Start manual, tap **Settings**.
2. From the Settings screen, select the Connections tab then tap **Connections** icon.
3. From the Connections screen, tap **Add a new modem connection**.
4. Input a unique name for the connection then select **Cellular Line (GPRS)** from the modem list and then tap **Next**.
5. Input the **Access point name** and then tap **Next**.
6. Input your **user name**, **password**, and **domain** then tap **Finish**. Contact your network administrator for assistance.

NOTE:

The GPRS and USB connections cannot be used at the same time.



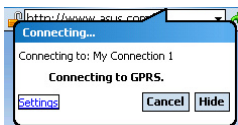
Connecting GPRS

To connect GPRS:

1. Launch any application that connects to the Internet (e.g. Internet Explorer).

The device will automatically connect your default GPRS connection. A pop-up callout appears to display the connection status.

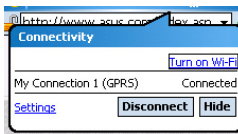
2. When connected, you can start browsing the Internet. If you're using Internet Explorer, the default site will be displayed.



Disconnecting GPRS

To disconnect GPRS:

1. Tap **G** from the status bar.
2. From the pop-up callout, tap **Disconnect**.
3. Tap "X" at the top right corner of the screen to exit.



NOTE:

- If your ActiveSync is set to sync with Exchange Server automatically, synchronization will occur after you connect again.
 - GPRS will automatically reconnect every time you launch an application that requires GPRS connection (e.g. Internet Explorer or Pocket MSN).
-

Service and Support

For more information about your O₂ PDA phone, answers to Frequently Asked Questions, documentation and software upgrades, please visit www.seeO2.com. You can also register online to receive information on updates and promotions.

Should you have further enquiries or feedback, please log on to www.seeO2.com/contactus to fill in the relevant forms, and our online support team will get back to you.

Alternatively, you may call us for assistance. For a complete list of customer service phone numbers in your area, please refer to your O₂ Warranty Card.

FAQs

Why does my phone not turn on when I press the power button?

Either you didn't press the key long enough, or the phone has shut down because the battery power level is too low to make calls. Recharge the battery fully.

How do I suspend the screen display or wake up the phone?

Press the power button briefly to suspend the screen display. If the screen display is off, press the power button to wake up your phone.

My phone displays 'Insert SIM', what does this mean?

You must insert the SIM card before you can use the phone. If it is already installed, remove and clean the blank area with a dry cloth, then insert again.

My phone displays 'INVALID or missing SIM card', what does this mean?

The phone is SIM-locked and will not accept the inserted SIM card. Insert the correct SIM card or contact your network operator.

My phone displays 'EMERGENCY ONLY', what does this mean?

Your SIM card is not properly installed or configured, or you are out of network range.

My phone displays 'NO NETWORK', what does this mean?

You're outside network range or there is no clear path to the transmitter. If you're inside a building, try moving towards a window.

Some calls are not processed. What is wrong?

A call bar has been set to restrict phone usage. Check the call barring status and cancel as necessary.

Someone else is receiving my calls. What is wrong?

The phone has been set to forward your calls to another number. Cancel call forwarding as necessary.

Can I send and receive emails and surf the Mobile Internet on my phone?

Yes. Your phone has Web capability, which means that you can access the Internet from your phone. For sending and receiving emails, please refer to the user manual or contact O₂ Customer Service.

Where can I check why my phone has gone wrong?

Tap **Start > Programs > Self Diagnostics** to run diagnostic tests on your system. Otherwise, have your warranty card and phone ready and contact your local dealer.