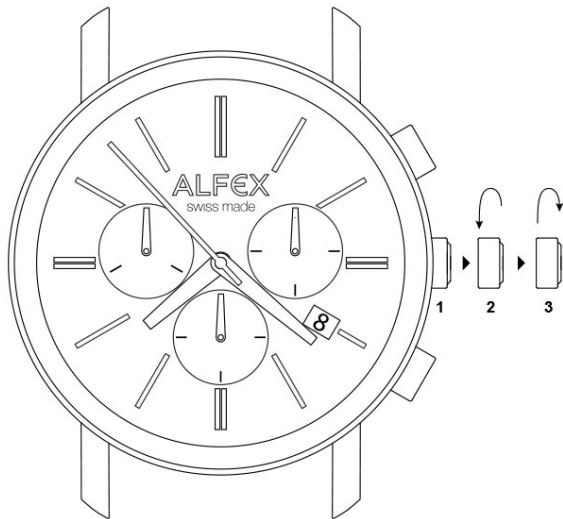


**ALFEX**  
swiss made

user manual

# chrono



## setting the time

1. pull out the crown to position 3 (the watch stops)
2. turn the crown clockwise until you reach the correct time
3. push the crown back into position 1

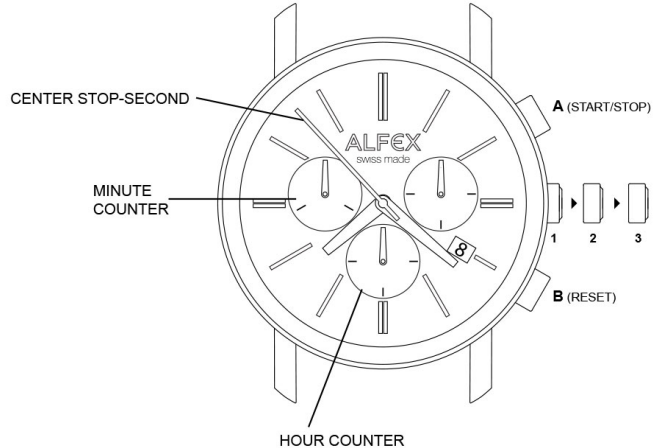
## setting the date

4. pull out the crown to position 2 (the watch continues to run)
5. turn the crown counter-clockwise until the previous day date appears
6. pull out the crown to position 3 (the watch stops)
7. turn the crown clockwise. as you pass 0:00 hours (midnight), the date will change to the current date, continue to turn the crown until you reach the correct time.
8. push the crown back into position 1

## warning notice

do not change the date between the hours of 10 p.m. and 2 a.m.  
this is the time when the movement is in the position to carry out the automatic date change, and any interference may cause damage to the movement

# chrono



## chronograph

- the chronograph's hour counter measures times up to 12 hours.
- the minute counter measures 30 minutes per rotation.
- the center stop-second measures 60 seconds per rotation.

before using the chronograph functions, please ensure that:

- the crown is in position 1 (= normal position).
- the three chronograph hands are precisely at zero position following activation of pusher B. should this not be the case, the positions of the hands must be adjusted (see the chapter entitled "adjusting the chronograph hands to zero position").

## chronograph: basic function

(start / stop / reset)

1. press pusher A to start the center stop-second hand.
2. to stop the timing, press pusher A again.
3. to reset the three chronograph hands to zero positioning, press pusher B.

# chrono

chronograph: intermediate or interval timing

1. press pusher A to start the center stop-second hand.
2. press pusher B to stop the chronograph. Note: although the chronograph hands have stopped, the movement continues to record the current timing.
3. make up the measured time: press pusher B again and the 3 chronograph hands are quickly advanced to the ongoing measured time. to continue to record intervals, continue to push pusher B.
4. press pusher A to stop and the final time is displayed.
5. to reset the three chronograph hands to zero positioning, press pusher B.

adjusting the chronograph hands to zero position

1. pull crown out to position 3 (all three chronograph hands are in their correct or incorrect zero position).
2. keep pushers A and B depressed simultaneously for at least 2 seconds (the center stop-second rotates by  $360^\circ$  – corrective mode is activated).
3. press pusher A to single step the center stop-second hand. Press and hold pusher A to advance the center stop-second hand quickly
4. press pusher B to advance to the next hand.
5. press pusher A to single step the hour counter hand. press and hold pusher A to advance the hour counter hand quickly. press pusher B to advance to the next hand.
6. press pusher A to single step the minute counter hand. press and hold pusher A to advance the minute counter hand quickly.
7. return the crown to position 1.

alfex sa

via cantonale  
centro galleria 3  
6928 manno  
switzerland

P. +41 91 612 22 90

F. +41 91 612 23 09

[info@alfex.ch](mailto:info@alfex.ch)

[alfex.ch](http://alfex.ch)

[facebook.com/alfexswiss](https://facebook.com/alfexswiss)

[twitter.com/alfex\\_swissmade](https://twitter.com/alfex_swissmade)