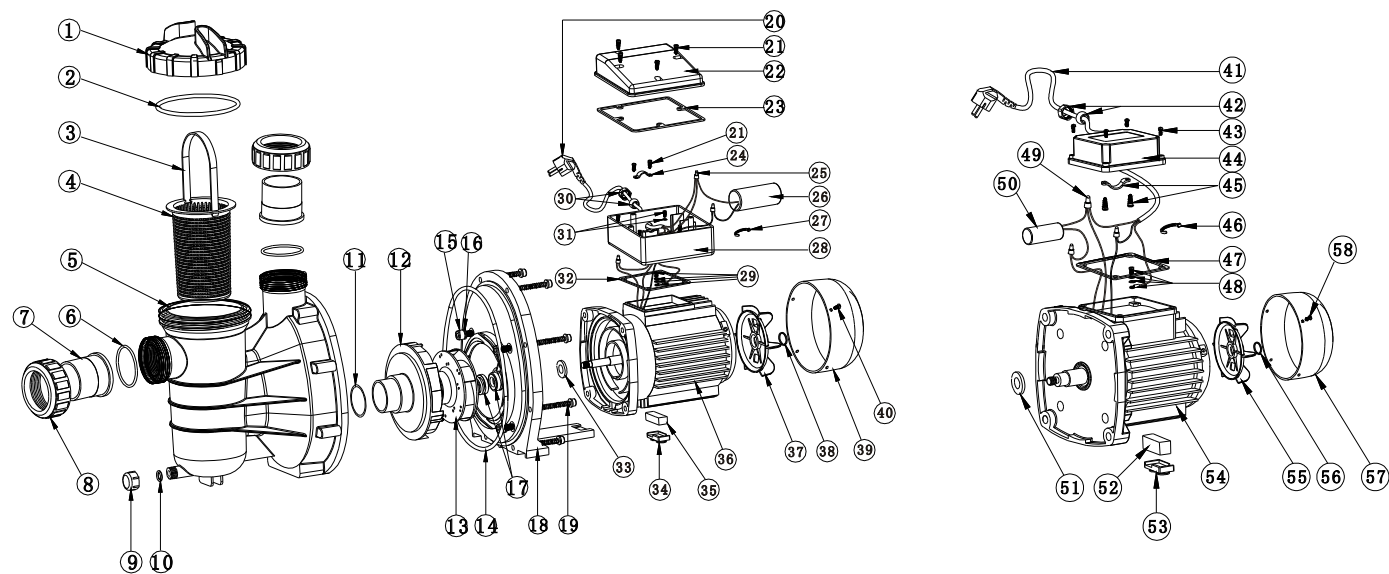
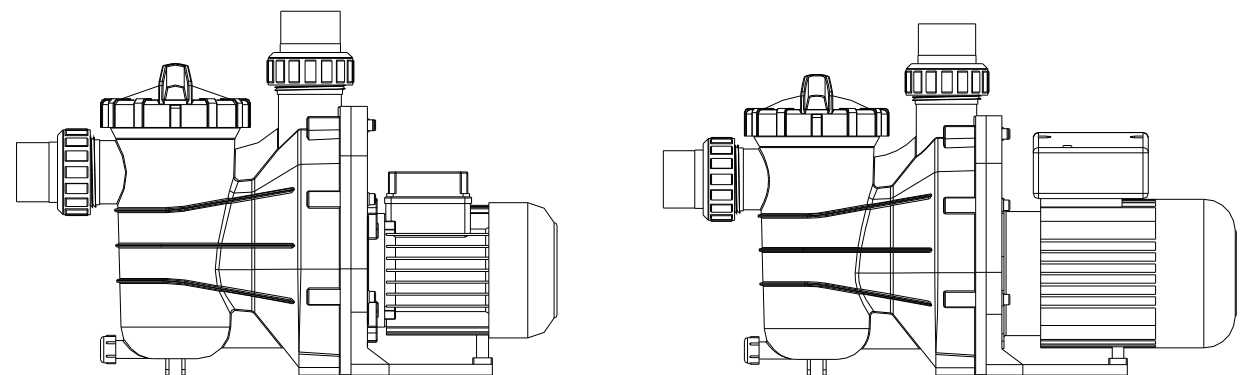


## PARTS OF PUMP



Key NO.	Description	Qty	Part No.	Key NO.	Description	Qty	Part No.
1	Lid Assembly	1	031101	30	Nut for irdome	1	030128
2	Seal O'ring	1	031111		Waterproof plug for cable	1	030131
3	Handle	1	030303	31	Screw for irdome	4	030132
4	Basket	1	031103		Washer	4	030222
5	Pump Body	1	031105	32	Washer for irdome	1	030225
6	O'ring	2	030236	33	Waterproof O'ring for motor shaft	1	031102
7	Union head (imperial standard, 1.5", 48mm)	2	02012101	34	Skidproof piece	1	031110
	Union head (metric standard 1.5", 50mm)	2	02012102	35	Skidproof washer	1	031116
8	90° Nut	2	020140	36	Motor 0.5HP	1	030422
9	Drain cover	2	031104		Motor 0.75HP	1	030423
10	Washer	1	031112		Motor 1.0HP & 1.2HP	1	030424
11	O'ring for Diffuser	1	031107	37	Fan for moter	1	030230
12	Diffuser	1	031108	38	Elastic protective ring (Type B)	1	031133
13	Lid for Impeller	1	031106	39	Cover for motor	1	030226
	Impeller Φ99*8.7	1	0304212	40	Screw for cover	4	030144
	Impeller Φ99*10.6	1	0304213	41	Cable 3*0.75mm <sup>2</sup> *2.1m	1	
	Impeller Φ99*13.3	1	0304214		Waterproof plug wire 3*0.75mm <sup>2</sup> *2.1m	1	030415
	Impeller Φ100*17.2	1	0311061	42	Nut for irdome	1	030128
	Copper nut Φ14*14-M8	1	0304063		Waterproof plug for cable	1	030409
14	O'ring for flange	1	031113	43	Screw for irdome	4	030410
15	Round screw	1	031114	44	Irdome	1	030408
16	O'ring	4	031115	45	Cable placement piece	1	030129
17	Shaft Seal 1/2"	4	030233		Screw for cable placement piece	2	030133
18	Flange	1	031109	46	Belt	1	030137
19	Screw with washer	1	031117	47	Waterproof Washer for the cover of irdome	1	030416
20	Cable 3*1.5mm <sup>2</sup> *2.5m	8	030141	48	Earth copper screw	1	
	Waterproof plug wire 3*1.5mm <sup>2</sup> *2.5m	1	030315		Washer	1	
21	Screw	1	030221		Washer	1	
22	Lid for irdome	6	030210		Earth cable	1	030135
23	Washer for the cover of irdome	1	030224	49	Safety pressing cable nut	3	030413
24	Cable placement piece	1	030129		Capacitance 5UF/450V/50/60HZ	1	030411
25	Safety pressing cable nut	1	030136	50	Capacitance 6UF/450V/50/60HZ	1	030412
26	Capacitance 8UF/450V	3	030211	51	Waterproof O'ring for motor shaft	1	
	Capacitance 14 UF/450V	1	030212	52	Skidproof washer	1	0311161
	Capacitance 20UF/450V	1	030213	53	Skidproof piece	1	031110
27	Belt	1	030137	54	Motor 0.2HP	1	030418
28	Irdome	1	030209		Motor 0.33HP	1	030419
29	Earth copper screw	1	030160	55	Fan for moter	1	030420
	Washer	1	030161	56	Elastic protective ring (Type B)	1	
	Washer	1	030162	57	Cover for motor	1	030417
	Earth cable	1	030135	58	Screw for cover	4	030144

## SS Pool & Spa Pump Installation & Operating Instructions



### INSTALLATION

Only qualified, licensed personnel should install pump and wiring.

### IMPORTANT ELECTRICAL

Electrical Contractors Please Note: All 220 volt 50 Hz pumps must be wired to the main power supply through an approved and correctly rated contactor.

### Pump Mount Must:

- ❖ Be solid Level Rigid Vibration Free.
- ❖ Allow use of short, direct suction pipe. (To reduce friction losses & don't install the pump at more than 3M geometrical height from water level)
- ❖ Allow for gate valves in suction and discharge piping.
- ❖ Have adequate floor drainage to prevent flooding.
- ❖ Be protected from excess moisture.
- ❖ All adequate access for servicing pump and piping.

### NOTICE:

Pump suction and discharge connections have moulded in thread stops, **DO NOT** try to screw pipe in beyond these stops.

## OPERATION



- ▲ **NEVER** run pump dry! Running pump dry may damage seals, causing leakage and flooding! Fill pump with water before starting motor.
- ▲ Before removing lid:  
STOP PUMP before proceeding.  
CLOSE GATE VALVES in suction and discharge pipes.  
RELEASE ALL PRESSURE from pump and piping system.  
NEVER tighten or loosen screws while pump is operation.
- ▲ Do not block pump suction! To do so with body may cause severe or fatal injury. Children using pool must **ALWAYS** have close adult Supervision!

### Priming Pump:

- ❖ Release all air from filter and piping system: see filter owner manual.
  - ❖ In a flooded suction system (water source higher than pump), pump will prime itself when suction and discharge valves are opened.
  - ❖ If pump is not in a flooded suction system, unscrew and remove trap cover; fill trap and pump with water.
  - ❖ Clean and inspect Ring; re-install on trap cover.
  - ❖ Replace trap cover on trap; turn clockwise to tighten cover.
- NOTICE:** Tighten trap cover by hand only.  
Pump should prime now. Priming time will depend on vertical length of suction lift and horizontal length of suction piping.

## Routine Maintenance

- The only routine maintenance needed is inspection/cleaning of trap basket. Debris or trash that collects in basket, will choke off water flow through the pump. Follow instructions below to clean trap:
1. Stop pump, close gate valve in suction and discharge, and release all pressure from system before proceeding.
  2. Unscrew trap lid (turn counterclockwise).
  3. Remove strainer basket and clean. Be sure all holes in basket are clear, flush basket with water and replace in trap with large opening at pipe connection port (between ribs provided). If basket is replaced backwards cover will not fit on trap body.
  4. Clean and inspect lid Ring; reinstall on trap cover.
  5. Clean Ring groove on trap body and Replace lid. To help keep lid from sticking, tighten hand tight only.
  6. Prime pump (see priming instructions above)

## SERVICE & REPAIR PARTS

Refer all service to your local agent or dealer as his knowledge of your equipment makes him the vest qualified source of information. Order all repair parts through your dealer. Give the following information when ordering repair parts:

1. Unit nameplate data or serial number on label.
2. Description of part.

## TROUBLE SHOOTING

### MOTOR DOES NOT START

1. Disconnect switch or circuit breaker in off position
2. Fuses blown or thermal overload open
3. Locked motor shaft
4. Motor windings burned out
5. Defective starting switch inside singl phase motor
6. Disconnected or defective wiring
7. Low voltage

### PUMP DOES NOT REACH FULL SPEED

1. Low voltage
2. Pump connected for wrong voltage

### MOTOR OVERHEATS (protector trips)

1. Low voltage
2. Motor windings connected for wrong voltage on dual voltage model
3. Inadequate ventilation

### PUMP DELIVERS NO WATER

1. Pump is not primed
2. Closed valve in suction or discharge line
3. Leakage or air into suction system
4. Impeller clogged

### LEAKAGE OF WATER AT SHAFT

1. Shaft seal requires replacement

### LOW PUMP CAPACITY

1. Valve in suction or discharge line partly closed
2. Suction or discharge line partly plugged
3. Suction or discharge line too small
4. Plugged basket in skimmer or hair and lint strainer
5. Dirty filter
6. Impeller clogged

### HIGH PUMP PRESSURE

1. Discharge valve or inlet fittings closed too much
2. Return lines too small
3. Dirty filters

### NOISY PUMP AND MOTOR

1. Plugged basket in skimmer or hair in lint strainer
2. Worn motor bearings
3. Valve in suction line partly closed
4. Suction line partly plugged
5. Vacuum hose plugged or too small
6. Pump not supported properly

### AIR BUBBLES AT INLET FITTINGS

1. Leakage of air into suction line at connections or valve stem
2. Cover gasket of hair and lint strainer needs cleaning
3. Low water level in pool

**NOTE:** If the recommendations in the trouble shooting portion of this manual do not solve your particular problem(s), please contact your local dealer for service.