

# Blue Cat's Stereo Chorus User Manual



# Table of Contents

<a href="#">Blue Cat's Stereo Chorus User Manual</a> .....	<a href="#">1</a>
<a href="#">The Stereo Chorus Effect</a> .....	<a href="#">3</a>
<a href="#">Description</a> .....	<a href="#">3</a>
<a href="#">Parameters</a> .....	<a href="#">3</a>
<a href="#">Controls</a> .....	<a href="#">4</a>
<a href="#">Controls examples</a> .....	<a href="#">4</a>
<a href="#">General Behavior</a> .....	<a href="#">4</a>
<a href="#">Keys</a> .....	<a href="#">4</a>
Common behavior.....	4
Button specific behavior.....	5
<a href="#">Mouse</a> .....	<a href="#">5</a>
<a href="#">Main Menu &amp; Settings</a> .....	<a href="#">6</a>
<a href="#">The Main Menu</a> .....	<a href="#">6</a>
<a href="#">The Global Settings Window</a> .....	<a href="#">6</a>
Global Skin.....	7
Global MIDI Input Settings.....	7
<a href="#">Current Preset Settings Window</a> .....	<a href="#">9</a>
Skin.....	9
Preset MIDI Input Settings.....	9
<a href="#">Skins</a> .....	<a href="#">11</a>
<a href="#">About Skins</a> .....	<a href="#">11</a>
<a href="#">Changing the Skin</a> .....	<a href="#">11</a>
<a href="#">Create a Custom Skin</a> .....	<a href="#">11</a>
<a href="#">Troubleshooting</a> .....	<a href="#">12</a>
<a href="#">Installation</a> .....	<a href="#">12</a>
I have installed my plug-in and it does not show up in my host application.....	12
<a href="#">More</a> .....	<a href="#">13</a>

# The Stereo Chorus Effect

## Description

Based on Blue Cat's Chorus technology, Blue Cat's Stereo Chorus has the same versatility and crystal-clear sounding capabilities as its little brother, plus a subtle to very deep stereo effect feature: just play with the 'stereo' control and get this famous widening stereo chorus effect. You will feel like the sound is turning around your head.

The Chorus effect was originally designed to simulate several voices: just as if several persons were playing together the same notes but with a variable delay between them. This is the effect you get with Blue Cat's Stereo Chorus when setting the rate parameter to a small value. But this plug-in also enables you to drastically change your sound and produce strange pitch modulation or crazy 'bubbles' effects.

## Parameters

The parameters of this plug-in are the following:

<b>Param id</b>	<b>Name</b>	<b>Unit</b>	<b>Description</b>
input0	Bypass		Bypass the effect.
input1	Gain	dB	Input gain.
input2	Dry	%	Amount of dry input signal.
input3	Wet	%	Amount of wet signal (signal modified by the variable delay).
input4	Delay	ms	Average delay applied to the signal.
input5	Depth	%	Depth of the Stereo Chorus effect: amount of delay variation around the average delay.
input6	Rate	Hz	Rate of the LFO.
input7	Stereo	%	Amount of stereo effect. Set this parameter to 0 if you want a mono chorus effect.
input8	Shape		Selects one of the two available shapes for the LFO: sine (0) or triangle (1) waveform.

The param id field is used when designing a new skin. See the [Skins](#) section for more information.





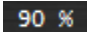
## Controls

Blue Cat's Stereo Chorus plug-in uses a skinnable user interface. The appearance and behavior of the user interface can thus change a lot depending on the chosen skin. This section will expose you the different controls you may encounter in these skins and the way they can behave. A well designed skin should be easy to use anyway.

You can control the plug-in via MIDI Control Change messages as well and customize the way you interact with MIDI messages. See the [main menu](#) section for more information.

### Controls examples

Here are a few examples of possibles controls you may encounter in the user interface:

				
fader	slider	knob	button	Text control

### General Behavior

Setting the keyboard focus on a control (so that it receives key events) may be automatic (when you pass the mouse over it it gets focus) or manual (you have to click on the control to set the focus on it).


It is usually made obvious to you to know the active surfaces of the skin (the places where you can click): the mouse cursor usually changes when you can do something on a control. In the default skins delivered with the plug-in, the cursor changes to a small hand to tell you when your mouse is over an active control.

### Keys

All control widgets support the following keys (note that some of them are caught by the host and thus never forwarded to the control. For example in Steinberg Cubase SX you cannot use the arrow keys):

#### **Common behavior**

<b>Key</b>	<b>Action</b>
Up Arrow	Small increment of the position (up or right)
Down Arrow	Small increment of the position (down or left)
Left Arrow	Same as Down Arrow
Right Arrow	Same as Up Arrow
Page Up	Large increment of the position (up or right)
Page Down	Large decrement of the position (down or left)
+	Small increment of the value of the control
-	Small decrement of the value of the control

<b>Key</b>	<b>Action</b>
d	Set to default value (same as mouse right click)
e	Opens the 'fine tuning' window to precisely set the parameter: 
SHIFT	When the key is down, the fine tuning mode is on, and you can modify the value with better precision when moving the mouse, the mouse wheel or using the keyboard. Just release the key to get back to the normal mode.


### **Button specific behavior**

<b>Key</b>	<b>Action</b>
Space Bar	Pushes the button
Enter	Pushes the button

## Mouse

---

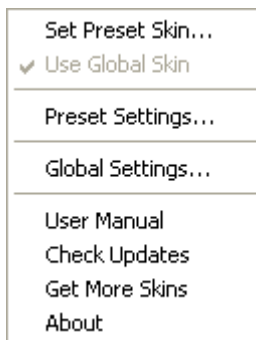
You can change the value of the parameter with the mouse:

<b>Mouse Event</b>	<b>Action</b>
Left Click	Acquire focus and start dragging or push (button)
Left Double Click	Acquire focus and launch the "fine tuning" edit box (except button): 
Right Click	Set the value to default
Mouse Wheel	Increment or decrement the position (focus required)
Mouse Drag	Change the control position depending on mouse movement (except button)

## The Main Menu

---

If you right click on the background of the plug-in, the following pop-up menu appears:



The Commands are the following:

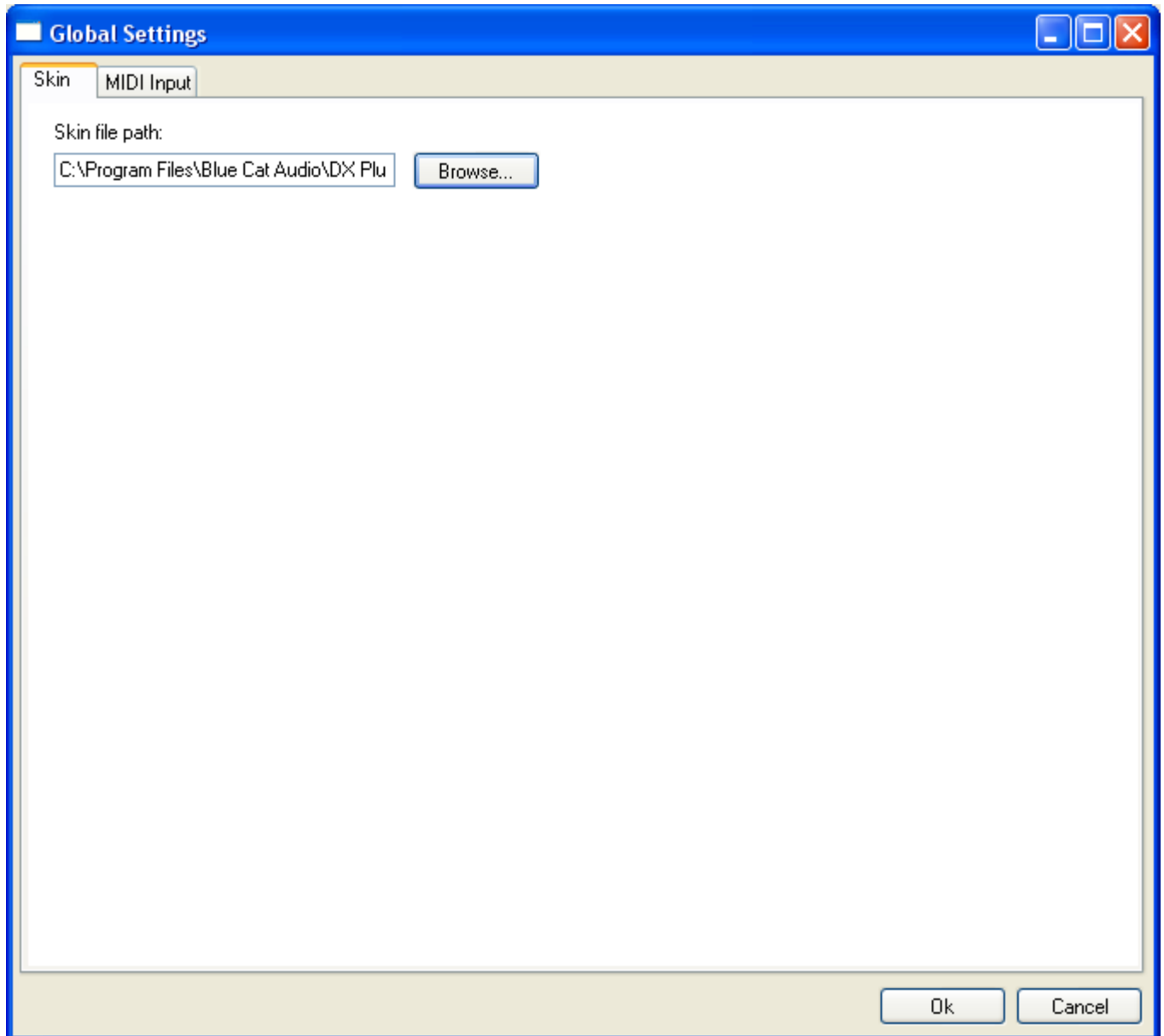
- Set Preset Skin: change the skin for the current preset.
- Use Global Skin: use the skin defined in the global settings for the current preset. This item is enabled only if a skin has been defined for the current preset.
- Presets Settings: open the presets settings window. It enables you to change the skin and MIDI settings for the current preset.
- Global Settings:
- User Manual: open this user manual.
- Check Updates: check the updates for this software on our website.
- Get More Skins: get more skins for this software.
- About: displays the "about" dialog box.

## The Global Settings Window

---

The settings you change in this window apply to all instances of the plug-in, for all presets. Consider these settings as "default" settings.

## Global Skin



You can change the default skin for all instances of the plug-in: write the skin file path in the text edit box or click on the button to open a file chooser dialog. If you have several instances of the plug-in opened in your session, you will have to re-open the user interfaces of these plug-ins to see the skin change.

### **Global MIDI Input Settings**

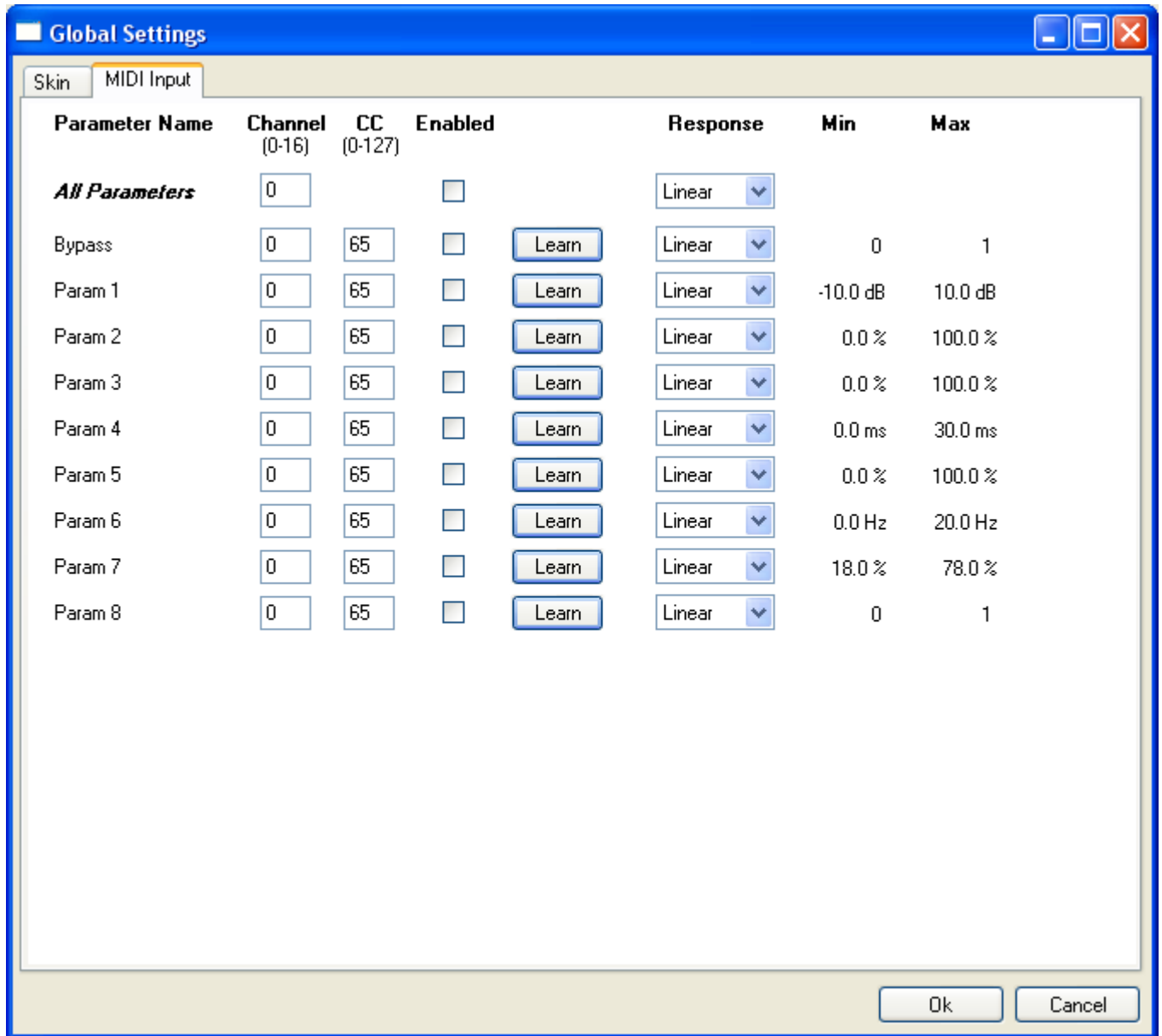
For each parameter you can define a default MIDI channel and CC number. You can then control the plug-in with an external MIDI controller or one of our plug-ins that generate MIDI messages.

The following settings are available for each plug-in parameter:

- Channel: MIDI Channel for the parameter control. If set to 0, the plug-ins will accept Control Change Messages from all MIDI Channels (MIDI Omni mode).
- CC: Control Change Number.
- Learn: click on this button to activate the MIDI learn functionality. When it is activated, you can move your MIDI controller, and the plug-in will automatically set the MIDI Channel and CC

Number.

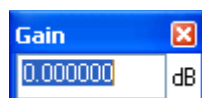
- Enabled: enable/disable the MIDI control of the parameter.
- Response: response curve of the MIDI control: from very fast to slow control.
- Min: minimal value of the parameter when MIDI controlled.
- Max: Maximum value of the parameter when MIDI controlled.



(generic screen shot, does not correspond to the actual plug-in parameters)

**Note:** if the Min value is higher than the Max value, the response curve will be reversed: increasing the MIDI controller value will decrease the parameter value.

**Note:** if you double click on the parameter text control boxes for the max and min values, a "fine tuning" edit box will appear and let you change the min and max values with more precision:



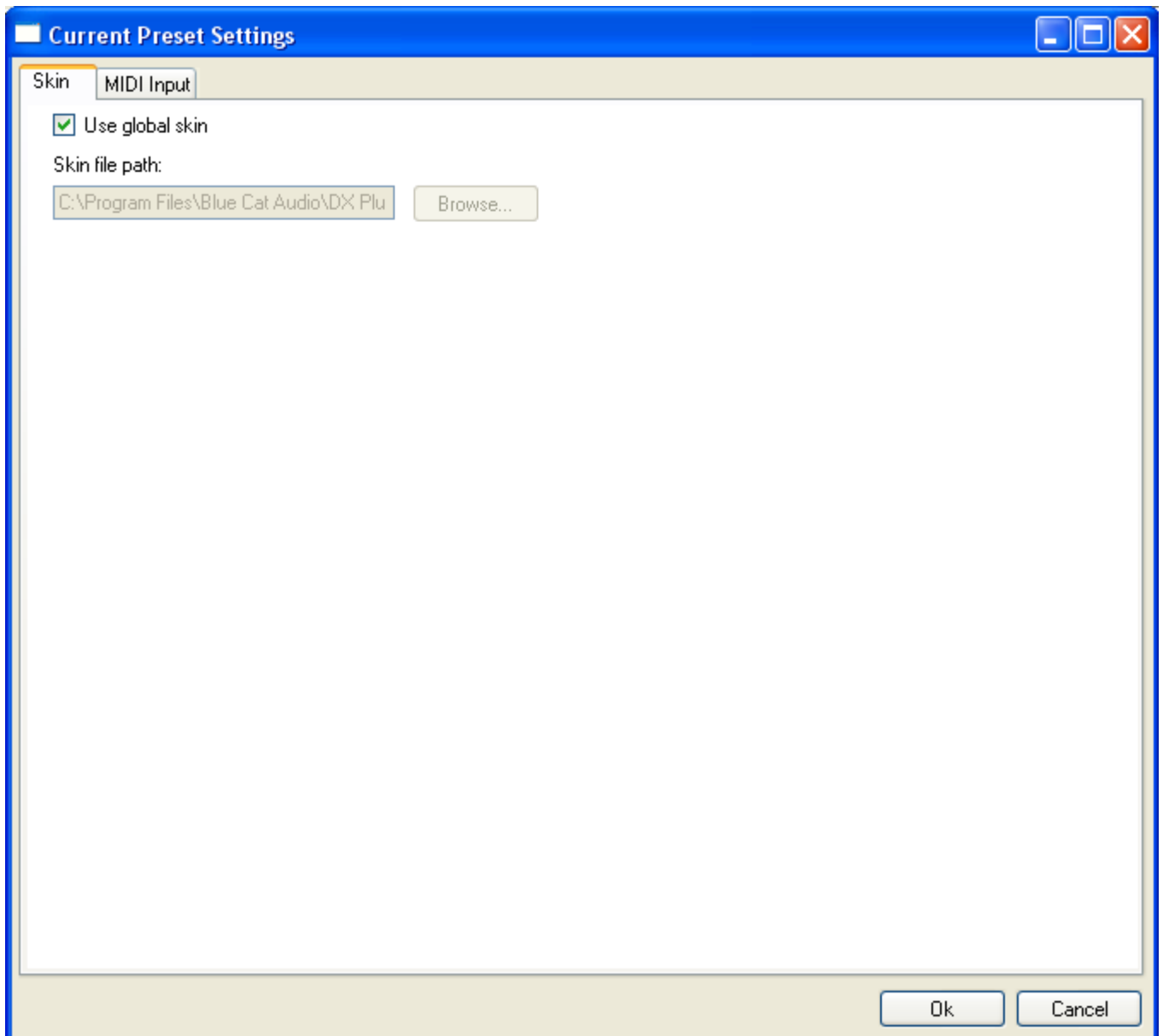


## Current Preset Settings Window

---

This window lets you change the settings for the current preset of the current plug-in only.

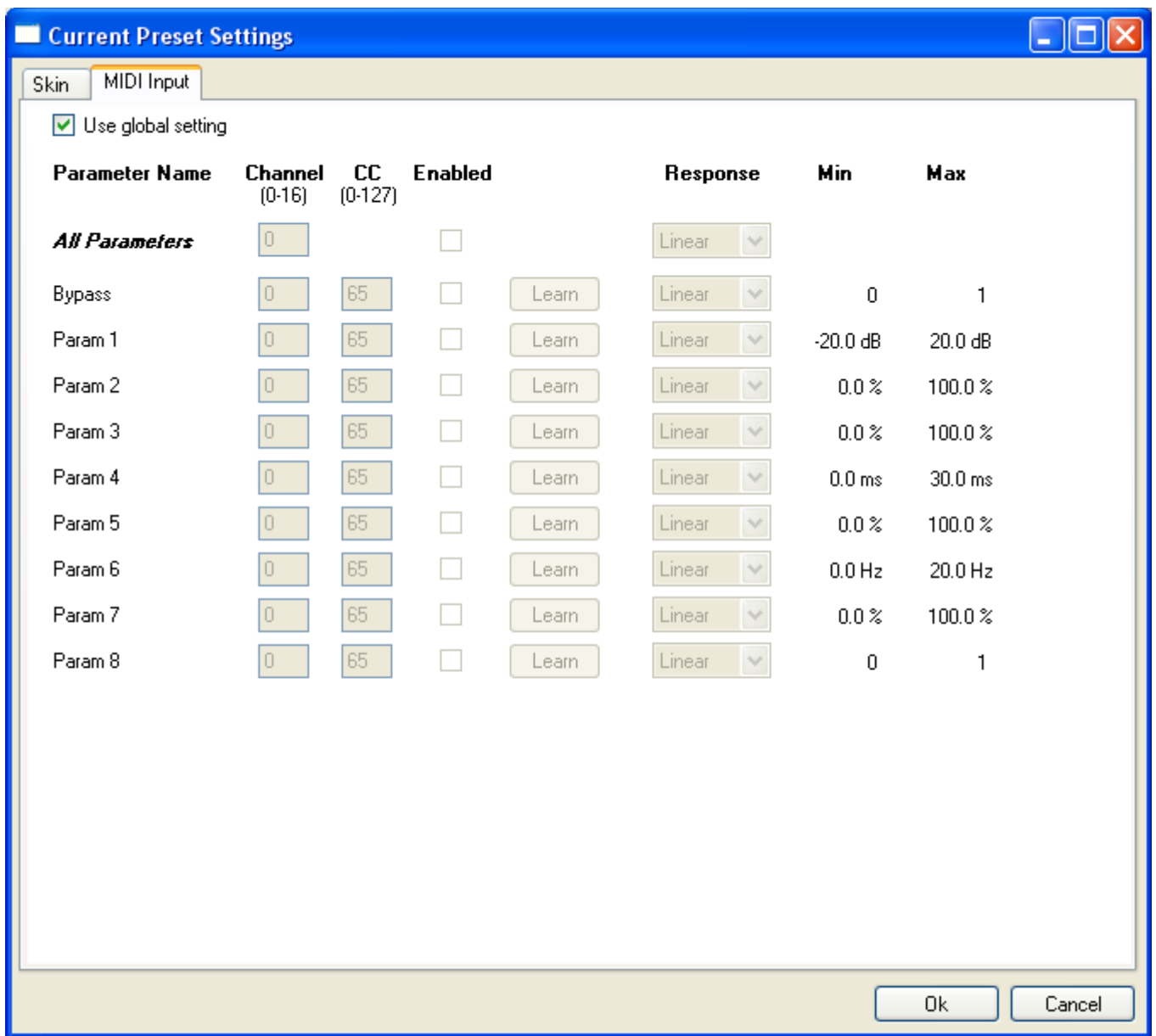
### **Skin**



You can choose to use the global skin setting or to change the skin for the current preset. This way you can have different skins for different instances of the plug-in in the same session in order to differentiate them.

### **Preset MIDI Input Settings**

Use the global settings or override them for the current preset. The parameters are the same as for the [global MIDI input settings](#).



## About Skins

---

Blue Cat's Stereo Chorus integrates Blue Cat's skinning engine that allows you to customize the user interface of the plug-in. You can download new skins for you plug-in at the following address:

<http://www.bluecataudio.com/Skins>

If you don't find a skin that you like or if you want to use your graphic skills, you can choose to [create your own skin](#).

## Changing the Skin

---

You have two ways to change the skin of your plug-in: you can change the default (or 'global') skin in the global settings, or change the skin for the current preset only. The global skin applies to all plug-in instances, whereas the current preset skin only applies to the current preset of the current plug-in instance.

See the [main menu](#) to see how to access these options.

On some hosts the plug-in window won't resize automatically. In this case, just close the window and re-open it, it will be displayed with the right size.

## Create a Custom Skin

---

You can create custom skins for your plug-in in order to adapt it to your exact needs. Change its look and make it integrated in your virtual studio!

Just read the Blue Cat's Skinning Language user manual and download the samples for the tutorial on <http://www.bluecataudio.com/Skins>. You can get ready to create your own skins in a few minutes.

You can then share your skins on our website. Show your talent and share your knowledge with the users community!

## Installation

---

### ***I have installed my plug-in and it does not show up in my host application***

First check that your application supports Direct X or VST plug-ins.

If you are using the Direct X version, check that your host application supports DXi plug-ins (MIDI-enabled Direct X plug-ins). If it does not, it may remove it from the Direct X plug-ins list (some applications such as Sony Vegas 5 and Cool Edit Pro are known to do this). In this case, use our freeware [DXi Manager](#) and disable the MIDI capabilities of the plug-in. You may need to reinstall the software again before it shows up into your host application.

If you are using the Direct X version and your host application supports DXi, check that the plug-in does not appear in the 'virtual synth' or 'synthesizers' category. If you wish not to use the MIDI capabilities of the plug-in and use it as a regular Direct X plug-in, you can download the freeware [DXi Manager](#) and disable the MIDI capabilities of the plug-in.

**Upgrades, tutorials, more skins and plug-ins are available on our website:**



**BLUE CAT AUDIO**  
[www.bluecataudio.com](http://www.bluecataudio.com)