

BOYO®

VTC700RQ-2

USER MANUAL

Digital Wireless
7inch Monitor with DVR
and heavy duty night vision camera



Foreword

CONGRATULATIONS. The Rearview Camera, when used as described, will give you years of dependable service in your car, truck, RV, or mini-van. We have taken numerous measures in quality control to ensure that your product arrives in top condition, and will perform to your satisfaction.

Model: VTC700RQ-2

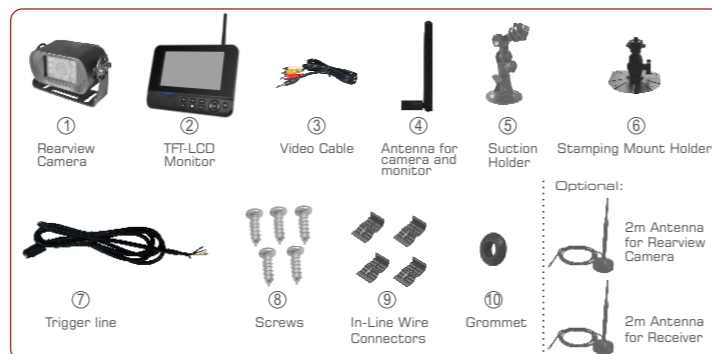
Version 1.0

Please read this user manual carefully before using this product.

Failure to understand operation procedures may result in injury.

* The pictures are for reference only, please refer to real subjects.

Packing List



※ The pictures are for reference only, please refer to real subjects.

Structure

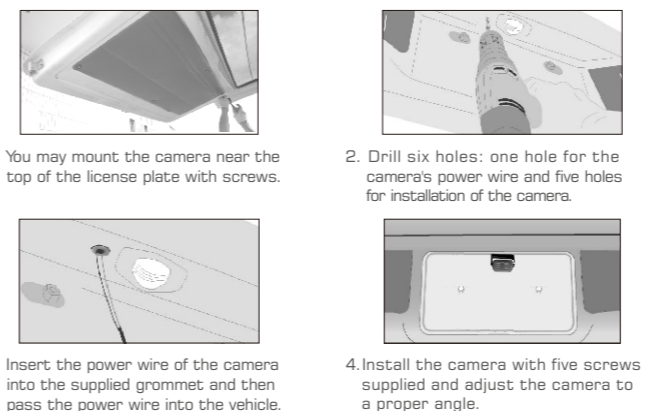


— 1 —

Installation

These installation instructions do not apply to all vehicles. They are meant as only as a general guide to big vehicle makes & models. For specific questions, contact your vehicle manufacturer. Consult your local motor vehicle laws on the use of this product. Do not attempt this if you are not knowledgeable with electrical installation practices.

camera Installation:

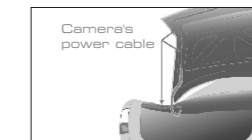


Notice

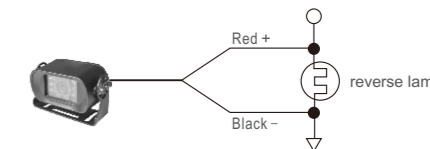
※ The product is not suitable for mini vehicles. For specific vehicle such as container car or container truck, please consult your local vehicle garage for installation.
 ※ Some vehicle may have a hole available to pass the wire through, you do not need to drill a hole.
 ※ Before drilling those holes, you must check out and make sure no other components too close to your aguille. Before drilling, we strongly recommend you to remove electrical parts on fuel system behind the vehicle door and clear the surroundings to avoid unexpected damages.

— 2 —

camera power wire connection:



1. Once you have located the reverse light circuit, you need to route the power wire to that location. You must securely fasten the power wire to prevent it from being caught on by vehicle component such as the trunk hinge. Never route the cable outside the vehicle.



2. The camera is equipped with Reverse Voltage Protection, please make sure that the Red wire is connected to positive (+) and the Black wire is connected to negative (-).

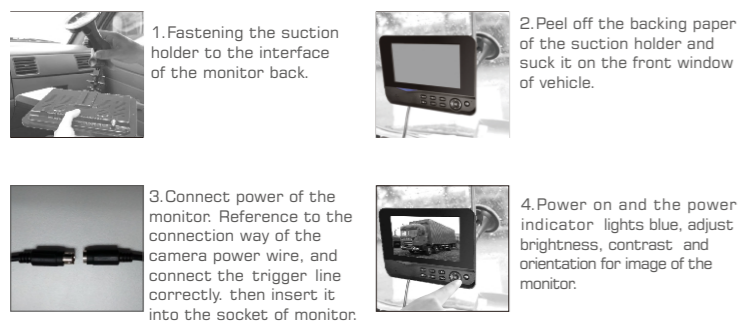


Insert the existing wire to be tapped. Insert the wire to be attached. Crimp tap and then close lock.

3. Wrap In-Line wire connectors over the camera power wire.

— 3 —

monitor installation:



Trigger wire installation:

A How to install the trigger wire
 1. connecting the corresponding female jack first to the monitor male part
 2. red/black power wire for the monitor power 9-32V
 3. 4 different trigger wires to different camera power source

B Four different color labeled trigger wires
 White-camera 1 back-up; Yellow-camera 2 left;
 Green-camera 3 right; Blue-camera 4 toybox inside/front view

Trigger wire functions

1. Turn signal: when turning light signal is pulsed on, left-side camera (camera2)/ right side camera (camera 3) is activated accordingly.
 2. Rear image: when back-up, the rearview camera image will automatically be activated.
 3. Trigger video stay: when set left and right side camera, the triggered video will stay on 3 seconds after pulsing on.

option installation:

For better transmission effect, please connect the optional 2m antenna to the wireless camera/monitor. The 2m antenna is sucked on the tail of truck.



— 4 —

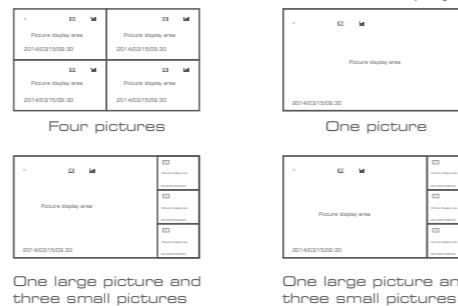
Operations

1. Press the POWER button on the monitor for 3 seconds, the power indicator will illuminate.
 2. This equipment has paired successfully out of factory. If not display image you need to pair again.
 Method: screw the metal button of camera back into the upside hole, Then press the MENU → CAMERA → PAIRING button to pair in the receiver. If the pairing is successful, you take away the metal button and place it into the underside hole.



3. For triggering wires, Monitor will have five related responses as below.
 ①. When installed camera and monitor -turning on, Reverse camera displays as full screen.
 ②. While turning left-the triggered left camera image shows on monitor as full screen.
 ③. While turning right -the triggered right camera image shows on monitor as full screen.
 ④. If neither turning left nor right, the system will be returned as 4ch system.
 ⑤. When back up, no matter right or left camera is triggered, always shows the backup camera as full screen.

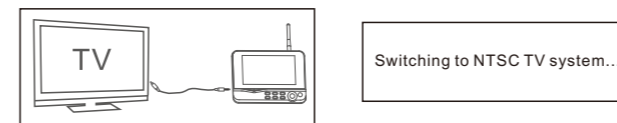
Press the [M] button to switch between four display modes:



4. Press the [C] button to enter cyclic mode display. Five cyclic intervals are available: 5s, 10s, 15s, 20s, and 30s and can be set under "System".

— 5 —

5. Video are able to be output from the monitor to bigger display device, such as TV or other screen with a RCA video input. When the connection is successful, Press the [TV] button to switch display between the monitor/TV and the receiver.



※ If the image does not display on TV, Please check the video cable is fully inserted into the monitor.

Specifications

Items	Value
Imaging Sensor	CMOS
Total Pixels	640 × 480
Horizontal View Angle	85°
Transmission Frequency	ISM 2,400-2,483MHz
Minimum Illumination	0 Lux (IR ON)
IR Night Range	3m
Modulating/Demodulating	16QAM, GFSK, BPSK
Power Supply	+12/+24VDC
Waterproof	IP66
Dimensions (W × D × H)	96 × 52 × 61 (mm) (Excluding Bracket)
Approx. Weight	440g
LCD Screen Type	7" TFT-LCD
Transmission Frequency	ISM 2,400-2,483MHz
Screen Resolution	800 × 480
Video System	NTSC/PAL
Received Sensitivity	-72dBm@GAM, -85dBm@GFSK
Consumption Current (Max.)	650mA
Dimensions (W × D × H)	214 × 26 × 157 (mm)
Approx. Weight	518g (Excluding Bracket)
Power Supply Voltage	DC +9V-32V
Unobstructed Effective Range (Matching)	<130m
SD Card	Supports to 32GB
Operating Temperature	-10°C-+50°C
Operating Humidity (Max.)	15%-85%RH

※ The actual transmission range may vary according to the weather, location, interference and building construction.
 ※ All the specifications are subject to minor change without prior notice.

— 6 —

FCC Information

This device complies with part 15 of the FCC Rules. Operation is subject to the following two conditions:
 (1) This device may not cause harmful interference.
 (2) This device must accept any interference received, including interference that may cause undesired operation. Changes or modifications not expressly approved by the party responsible for compliance could void the user's authority to operate the equipment.

Cautions

- The apparatus shall not be exposed to dripping or splashing and no objects filled with liquids, such as vases, shall be placed on the apparatus.
- Turn off the camera/receiver if the system is not in use.
- The camera/receiver can only be completely disconnected from the mains by unplugging the adapter.
- Do not cut the DC power cable of the apparatus to fit with another power source.
- Attention should be drawn to the environment aspects of battery disposal.

EU Environmental Protection

Waste electrical products should not be disposed of with household waste. Please recycle where facilities exist. Check with your local authority or retailer for recycling advice.



— 7 —