

TRACEABLE® HUMIDITY/THERMOMETER REMOTE SENSOR MODULE INSTRUCTIONS

SPECIFICATIONS

Humidity range:	25% to 95%RH
Humidity resolution:	1%
Humidity accuracy:	±2% RH mid-range to ±4% RH elsewhere
Temperature range:	-58.0 to 158.0°F (-50.0 to 70.0°C)
Temperature resolution:	0.1°C
Temperature accuracy:	±1°C
RF Transmission frequency:	433 MHz
Channels:	3
RF Transmission range:	30 meters
Temperature sampling rate:	40-seconds
Power:	(2) AAA 1.5V alkaline batteries
Size:	2-1/3 x 3½ x ¾ inches
Weight:	3 ounces

MAIN FEATURES

A. Two-line LCD

Displays the current temperature and humidity monitored by the remote unit

- Temperature display
- Humidity display
- Comfort-level indicator

B. LED INDICATOR

Flashes when the remote unit transmits a reading

C. °C/°F SLIDE SWITCH

Selects between Celsius (°C) and Fahrenheit (°F)

D. CHANNEL SLIDE SWITCH

Designates the remote unit Channel 1 - Channel 2 or Channel 3

E. RESET BUTTON

Returns all settings to default values

F. BATTERY COMPARTMENT

Accommodates two UM-4 or AAA size alkaline batteries

G. BATTERY DOOR

H. WALL-MOUNT HOLDER

Supports the remote unit in wall-mounting

I. REMOVABLE TABLE STAND

For standing the remote unit on a flat surface

GETTING STARTED

Note: To ensure proper reception between the main unit and the remote sensor, follow the instructions carefully.

BATTERY AND CHANNEL INSTALLATION

- Place both units as close as possible to each other.
- Remove the screws on the battery door of the remote unit.
- Assign a different channel to each remote sensor by changing the channel switch in the battery compartment of the remote sensor. (FIG A)
- Select the units of measurement for the temperature display on the °C/°F slide switch. (FIG B)
- Install 2 alkaline batteries (UM-4 or "AAA size 1.5V) strictly according to the polarity shown. (FIG C)
- Insert batteries or press the reset button of the main unit. Follow the instructions as set out in the User's manual.
- Replace the battery compartment door and secure its screws.
- Position the remote sensor and main unit within effective transmission range, which in usual circumstances, is 30 meters.

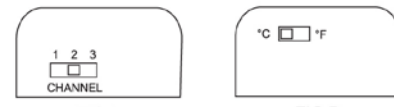
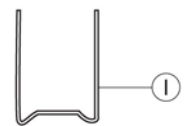
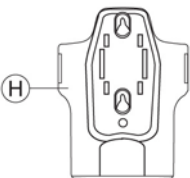
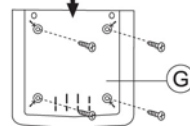
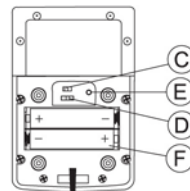
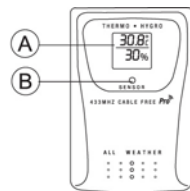


FIG A

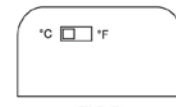


FIG B

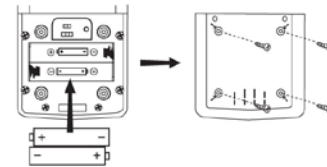


FIG C

Note: The effective range may be limited by building materials and the position of either the main unit or remote sensors. Try various set-up arrangements for best results.

Though the sensor is weatherproof, and is meant for use outside, it should be placed away from direct sunlight, rain, or snow.

CHANGING CHANNELS

Once a channel is assigned to a unit. You can only change it by removing the batteries and repeating the above procedure.

LOW-BATTERY WARNING

A low-battery indicator [] will activate on the sensor to indicate that the batteries are low and require changing. Low batteries for a given sensor will also be indicated on the main unit. Replace the batteries when the low-battery indicator appears.

THE COMFORT-LEVEL INDICATOR

The comfort level is based on the recorded relative humidity. An indicator will be displayed to show if the level is comfortable, wet or dry. (FIG D)



FIG D

OPERATION

Once batteries are in place, the sensor will start transmitting samplings at 40-second intervals.

The remote sensor reading shown on the LCD of the main unit depends on which remote sensor channel has been chosen.

HOW TO RESET THE UNIT

The reset function is required only when the unit is operating in an unfavorable say or malfunctioning.

To access:

- Lift open the battery compartment door.
- Insert a blunt stylus or the end of a paper clip into the hole marked RESET and press.
- Replace the battery compartment door.

HOW TO USE THE TABLE STAND OR WALL MOUNT

This sensor comes with a wall-mount holder and a removable stand. Use either to hold the unit in place.

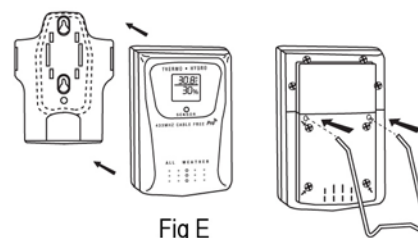


Fig E

PRECAUTIONS

- Do not immerse the unit in water.
- Do not clean the unit with abrasive or corrosive materials. They may scratch the plastic parts and corrode the electronic circuit.
- Do not subject the unit to excessive force, shock, dust, temperature, or humidity, which may result in malfunction, shorter electronic life span, damaged battery and distorted parts.
- Do not tamper with the units internal components. Doing so will invalidate the warranty on the unit and may cause unnecessary damage. The unit contains no user-serviceable parts.
- Only use fresh batteries as specified in the user's manual. Do not mix new and old batteries as the old ones may leak.

NOTE ON COMPLIANCE

This product complies to standards and specifications of FCC and article number 334 of P11.

Warning: Changes or modifications to this unit not expressly approved by the party responsible for compliance could void the users authority to operate the equipment.

NOTE: This equipment generates, uses and can radiate radio frequency energy and, if not installed and used in accordance with the instructions, may cause harmful interference to radio communications.

- However, there is no guarantee that interference will not occur in a particular installation. If this equipment does cause harmful interference to radio or television reception, which can be determined by turning the equipment off and on, the user is encouraged to try to correct the interference by one or more of the following measures:
- Reorient or relocate the receiving antenna.
- Increase the separation between the equipment and receiver.
- Connect the equipment into an outlet on a circuit different from that which the receiver is needed.

CAUTION

- The content of this manual is subject to change without further notice.
- Due to printing limitation, the displays shown in this manual may differ from the actual display.
- The manufacturer and its suppliers held no responsibility to you or any other person for any damage expenses, lost profits, or any other claim arise by using this product.

WARRANTY, SERVICE, OR RECALIBRATION

For warranty, service, or recalibration, contact:

CONTROL COMPANY

4455 Rex Road
Friendswood, Texas 77546 USA
Ph. 281-482-1714 Fax 281-482-9448
E-mail sales@control3.com
www.control3.com

Control Company is ISO 9001 Quality-Certified by DNV and ISO 17025 accredited as a Calibration Laboratory by A2LA.