

pulsaderm

ReNu

Diamond Microdermabrasion Facial Tool
User Manual



Table of Contents



Read all the instructions outlined in this manual before using Pulsaderm Re-Nu.

Table of Contents	3
What is Pulsaderm ReNu?	4
Package Contents	5
Warnings and Cautions	6
Charging the Battery	6
Choosing the Right Diamond Tip.....	7
Treatment Protocol	8
Prepare your Skin	8
Step By Step Directions for Use.....	8
After Treatment	10
Cleaning Instructions	10
Warranty	10
Pulsaderm Customer Service Information	10

What Is Pulsaderm® ReNu?



Pulsaderm® ReNu is an at home microdermabrasion system that uses diamond exfoliation combined with vacuum suction to accelerate the exfoliation of dead skin cells in the surface layer of the skin. Using Pulsaderm® ReNu improves the skin and generates new skin cells, removing visible imperfections such as sun damage, blemishes and fine lines. Skin care products find a more effective way to absorb into the layers of skin when dead skin cells are removed.

The stationary diamond tip gives you full control and enables you to maneuver the skin, so you can experience noticeably smoother skin even after just one treatment.

Package Contents



Pulasderm ReNu Tool
& User Manual



Delicate Diamond Tip
For the contours of your face



Standard Diamond Tip
For general use on the face



Firm Diamond Tip
For use on the body



Bold Diamond Tip
For use on elbows and knees



30 Filters

Power Adapter



Phyto Stem Cell
CE A Ferulic Serum

Warnings and Cautions

Do not use under running water, sinks or tubs.

- Keep away from children.
- If using Pulsaderm® ReNu causes any discomfort or if any other concerns develop, stop use immediately.
- Always start your treatment with a clean filter.
- Always turn off your device at the time of changing the filter.
- Do not use Pulsaderm® ReNu if you are experiencing any skin issues, have very sensitive skin or are taking prescription medications for your skin.
- Do not use around the eyes.
- Never operate this device if it has a damaged cord or plug. If it is not working properly, if it has been dropped or damaged, or submerged in water, contact Customer Service: 1-877-474-4038 EST.
- No alterations to this device are allowed. Only use Pulsaderm® ReNu as described and instructed in this user manual.
- Discontinue the use of Pulsaderm® ReNu if you experience any discomfort or pain.



Diamond Tip Caution

Do not rub your Diamond tips against each other

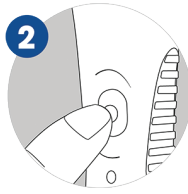
Charging the Battery

1. Insert the output plug into the DC input located at the end of the handle. Then plug the other end into an electrical wall outlet.
2. Charge your device for 12 hours.
3. After 12 hours, your Pulsaderm® ReNu is ready to use.

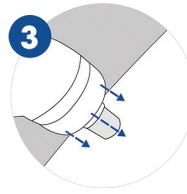
Sensitivity Test



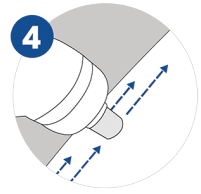
Step 1: Choose the Diamond tip and insert into the device.



Step 2: Turn ON the device.



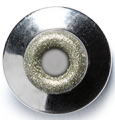
Step 3: Place the device on an area of the forearm in a way that you feel the suction.



Step 4: Gently move the Diamond tip in a straight line as shown in the diagram above.

-
- Do not hold the Diamond tip stationary once you have placed it on the skin, keep it moving.
 - The tip should always stay in full contact with the treatment area.
 - Wait one hour after test is complete to evaluate the results. You should not experience any pain or discomfort.
 - If you experience any pain or discomfort, do not use Pulsaderm® ReNu.
-

Choosing the Right Diamond Tip



Delicate Tip:
For the contours of your face



Standard Tip:
For general use on the face



Firm Tip:
For use on the body



Bold Tip:
For use on elbows and knees

Treatment Protocol

- Never use your Pulsaderm® ReNu on a daily basis.
- Skin should recover and treatments should be made every 6-7 days.

The length of each treatment should be based on the condition of your skin. Start treatment with 2-4 passes on each area. After your skin is used to the treatment, treat each area with 4-6 passes.

A complete treatment takes approximately 5 minutes.

Prepare your Skin for treatment

- Cleanse your skin to remove makeup, oil, dirt or creams.
- Pat the area dry.

Step By Step Directions for Use

1. Select the desired Diamond Tip.
2. Press the on/off button to turn the device on.
3. Ensure the Diamond tip is positioned properly on your face where you feel suction.
4. Maintain complete skin contact between the Diamond tip and the treatment area.
5. Do not apply too much pressure onto the skin's surface. The Diamond tip should glide freely along the treatment area.
6. Using your hands to stretch and hold the skin, move the device in straight lines. Start on the chin, and then move to the cheeks, forehead and nose.

See images on the next page for detailed instructions on how to glide the device across your face:

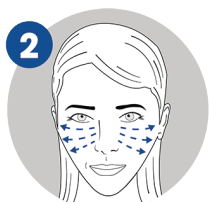




Chin and Upper Lip

Place the Diamond tip in the middle of your chin and glide in a straight line towards the end of your jawbone. Repeat step for each side of your face.

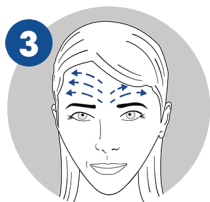
Place the Diamond tip in the middle of your upper lip and glide in a straight line towards your cheek bone. Repeat step for each side of your face.



Cheeks

Place the Diamond tip at the start of your cheeks and glide in a straight line towards your ear.

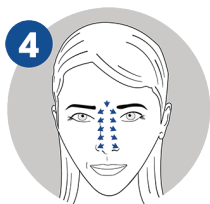
Repeat step for each side of your face.



Forehead

Position the Diamond tip in the middle of your forehead and slide sideways towards your hairline.

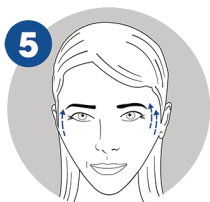
Repeat step for each side of your forehead.



Nose

Position the Diamond tip in the middle of your nasal bone and glide the Diamond tip in straight lines toward your cheeks.

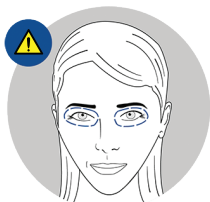
Repeat step for each side of your nose.



Temples

Position the Diamond tip on the outer edge of your eye, near the temple, and glide it vertically towards your hairline.

Repeat step for each side of your face.



Warning

DO NOT use Pulsaderm® ReNu on the skin below or above the eyes, as this area is thin and sensitive.

Service Life

- After treatment, immediately wash your face to remove dead skin.
- Dry your skin.
- Apply a mild moisturizer or toner.
- Do not use any other exfoliation method on your skin for the next 5 days.
- Apply sunscreen daily and do not expose your skin to direct sunlight.

Cleaning Instructions

- After each use, remove the used filter and clean with warm water and an antibacterial soap and rub it between fingers. Wait for filter to dry, and then insert it back into the device.
- After each use, remove the Diamond tip that was used and wash the tip in warm water and an antibacterial soap, then dry gently.
- Do not use damaged Diamond tips. If any of the Diamond tips are damaged, replace it with a new one.

Warranty

Pulsaderm® offers an automatic limited warranty for the above listed device of 1 year from the date of purchase at an authorized Pulsaderm® dealer/distributor. The warranty is effective immediately and requires the registration of this card. The warranty is valid only in accordance with the conditions set forth below. Warranty extends only to the original consumer purchaser and is non-transferable. Proof of purchase must be demonstrated for warranty services. Warranty is void if the product has been subject to accident, misuse, abuse, improper maintenance or repair, unauthorized modifications or any other use not found in the printed instructions.

Registration card must be completed and returned.

If warranty service is necessary, please contact us:

P: 1-877-474-4038 EST

F: 1-239-768-7328 EST

info@pulsaderm.com



Fort Myers, FL

P: 1-877-474-4038

info@pulsaderm.com

Visit us online at pulsaderm.com to order replacement tips and receive more information about usage, quality and safety.

Designed and Assembled in the USA