

nebulizers



concentrators



regulators



CPAP



RESPIRATORY



drive

WWW.DRIVEMEDICAL.COM



Power Neb 2 (Piston Powered)

18002
18002F

1/cs

10/Pkg Filter for 18001, 18002

(Small soft square washable sponge like material.

For use with new style with removable plug)

10/Pkg Filter (Long, round and nonwashable.

For use with model #18001, 18002 with

non-removable plug)

NEB KIT 500 Nebulizer Kit, 50/cs (Contains 1 each ampule
mouth piece, tubing & reservoir tubing)

FEATURES:

- Heavy duty and ideal for institutional use.
- Powerful piston pump is efficient, dependable and quiet.
- The lightweight and attractive unit features spacious storage for accessories and a built in handle for portability.
- Maximum pressure: 30 psi.
- Operating pressure: 12-14 psi.
- Liter flow: 8 ltr/min.
- 45° angle delivery allows patient to recline during treatment.
- Product Weight: 5.5 lbs.
- Comes complete with ampule for nebulizing, mouth piece, T-Piece, tube, two replacement exchange filters and instructions.
- Electrical Requirements: 115 Volt, 60 Hz.
- 5 Year Limited Warranty.



18002

**NEW AND IMPROVED
WITH REMOVABLE PLUG.**

Pacifica Nebulizer (Piston Powered)

18060
18061

(Will replace 18020 and 18021), 1/cs

Contains Both Disposable
and Reusable Neb Kit, 1/cs

NEBKIT 500 Nebulizer Kit, 50/cs
(Contains 1 each ampule,
mouth piece and tubing)

FEATURES:

- Ultra compact design makes it extremely portable.
- Weighs only 3.3 lbs.
- Powerful piston pump is efficient, dependable and quiet.
- Maximum pressure: 35 psi.
- Liter flow: 5-6 liters/Minute.
- 5 Year Limited Warranty.
- Comes complete with 1 NEBKIT 500 packed in box.



18060

**WEIGHS
ONLY
3.3 LBS!**



SPECIFICATIONS	18002	18060
METHOD OF NEBULIZATION:	Piston Compressor	Piston Compressor
ELECTRICAL REQUIREMENTS:	120Vac 60HZ	120 Vac 60HZ
PARTICLE SIZE:	Less Than 5 Microns	Less Than 5 Microns
MAXIMUM PRESSURE:	30 PSI	30-35 PSI
OPERATING PRESSURE:	12-14 PSI	16 PSI
UNIT DIMENSIONS:	16"x 6"x 9"	5.5"x 7.4"x 4"
WEIGHT:	5.5 lbs	3.3 Lbs
OPERATION HUMIDITY AND TEMPERATURE RANGE:	50°F-104°F 30%-95%RH	50°F-104°F 30%-95%RH
STORAGE HUMIDITY AND TEMPERATURE RANGE:	13°F-140°F 30%-95%RH	13°F-140°F 30%-95%RH
WARRANTY:	5 Years	5 Years

Important Notice: Item numbers that display an asterisk () reflect an item that will be discontinued or package change.

18062



SPECIFICATIONS	18062
COMPRESSOR DIMENSIONS:	6.9" x 5.1" x 3.7"
ELECTRICAL REQUIREMENTS:	120Vac 60HZ
PARTICLE SIZE:	0.5 µm to 5 µm
MAXIMUM PRESSURE:	30 PSI
OPERATION CYCLES:	Operation 20 minutes, Off 40 minutes
UNIT DIMENSIONS:	16.9" x 5.1" x 3.7"
WEIGHT (COMPRESSOR):	3.3 lbs. (1.5Kg)
AMBIENT OPERATION:	10° C~40°C (50°F~104°F)
HUMIDITY RANGE:	860 to 1060 hpa
TEMPERATURE RANGE:	30°F-75°F 30% RH
WARRANTY:	5 Years



SPECIFICATIONS	18020-50HZ
METHOD OF NEBULIZATION:	Piston Compressor
ELECTRICAL REQUIREMENTS:	120 Vac - 50 HZ
PARTICLE SIZE:	Less Than 5 Microns
MAXIMUM PRESSURE:	30-35 PSI
OPERATING PRESSURE:	10-14 PSI
UNIT DIMENSIONS:	4.5" (H) x 9.5" (W) x 6.50"
WEIGHT:	3.75 lbs.
OPERATION HUMIDITY AND TEMPERATURE RANGE:	50°F-104°F 30%-95%RH
STORAGE HUMIDITY AND TEMPERATURE RANGE:	13°F-140°F 30%-95%RH
WARRANTY:	5 years



18015



Pacifica II Nebulizer (Piston Powered)

18062 (Has replaced 18025), 1/cs
NEB KIT 500 Nebulizer Kit, 50/cs
(Contains 1 each ampule, mouth piece and tubing)

FEATURES:

- Ultra compact design makes it extremely portable.
- Weighs only 3.3 lbs.
- Powerful piston pump is efficient, dependable and quiet.
- Maximum pressure: 30 psi.
- Liter flow: 5-6 liters/Minute.
- 5 Year Limited Warranty.
- Comes complete with 1 NEBKIT 500 packed in box.

Spider Neb II (Piston Powered)

18020-50HZ 50Hz, 1/cs
NEBKIT 500 Nebulizer Kit, 50/cs (Contains 1 each ampule mouth piece and tubing)

FEATURES:

- Powerful piston pump is efficient, dependable and quiet.
- New, smaller lightweight portable design (only 3.6 lbs.).
- Powerful, efficient piston compressor delivers 40 psi at maximum pressure and 14 psi operating pressure, 11 LPM.
- Produces a particle size of less than 5 microns.
- Comes complete with ampule for nebulizing, mouth piece, tubing and user manual.
- 5 Year Limited Warranty.



Beetle Neb Compact Ultrasonic Nebulizer

18015 1/bx
18015 ADMASK Adult, 1/ea
18015 PEDMASK Pediatric, 1/ea

FEATURES:

- Ultrasonic treatment allows the patient to have a deep, penetrating therapy.
- The silent operation, compact design and one hand use makes it ideal for traveling.
- Electrical requirements: 100-240 VAC/60 Hz. Optional DC adapter (item #18019) available.
- Treatment times are 50% less than a motor driven nebulizer.
- Silent operation.
- Comes with a closed water chamber system, timer and air flow adjuster.
- Comes with portable battery pack, pediatric mask, adult mask, AC adapter, nozzle, air filter and mouthpiece.
- 3 Year Limited Warranty.

Important Notice: Item numbers that display an asterisk () reflect an item that will be discontinued or package change.



Neb-to-Go (Piston Powered)

18045	1/bx
18045KIT	Nebulizer Kit, 1/bx
18045CUP	Reusable Cup, 1/bx
18045BAG	Bag, 1/ea
18045BATT	Battery Pack, 1/cs
18045ADMASK	Adult Mask, 1/bx
18045PEDMASK	Pediatric Mask, 1/bx
18045TUBING	Tubing, 1/bx

FEATURES:

- Ultra-compact neb that fits in the palm of your hand.
- Promotes the highest level of mobility and convenience.
- Powerful piston powered compressor.
- Lightweight-weighs only .77 lbs.
- Can be used with AC provided power cord, with an DC auto adapter or with battery pack provided.
- Comes with portable battery pack, pediatric mask, adult mask, AC adapter, DC adaptor nozzle, air filter and mouthpiece.
- Includes instructional video.
- 5 Year Limited Warranty.



DC Adapter for Automobile

18019 1/ea

For use with "Straight Style" adaptor (item # 18015).

SPECIFICATIONS	18015	18045
METHOD OF NEBULIZATION:	Ultrasonic Vibration	Piston Compressor
ELECTRICAL REQUIREMENTS:	120 Vac 60HZ	120 Vac 60HZ
PARTICLE SIZE:	1.5-5.7(MMAD-3.8 Microns)	Less Than 5 Microns
MAXIMUM PRESSURE:	2.5MHZ Oscillation Rate	30 PSI
OPERATING PRESSURE:	N/A	N/A
UNIT DIMENSIONS:	3.2" x 6.6" x 2.3"	4.85" x 3.4" x 1.9"
WEIGHT:	0.57 lbs.	0.77 lbs.
OPERATION HUMIDITY AND TEMPERATURE RANGE:	50°F-104°F 30%-95%RH	50°F-104°F 30%-95%RH
STORAGE HUMIDITY AND TEMPERATURE RANGE:	13°F-140°F 30%-95%RH	13°F-140°F 30%-95%RH
WARRANTY:	3 Years	5 Years

Replacement Battery Pack for Ultrasonic Nebulizer

(Compact Ultrasonic Nebulizer comes complete with Battery Pack.)

18017 1/ea

For use with Compact Ultrasonic Nebulizer (item #18015).



DC Adapter for Automobile

18049 1/ea

For use with "L Shaped" adaptor (item # 18015 and 18045).



Filters for Nebulizers



Power Neb II with Detachable Power cord
18002F



Beetle Neb
18015F



Power Neb 1/Power Neb 2 w/non Removable Plug
18003



Aire Bus
18010F



Neb to Go
18045F



Pacifica
18060F



Spider Neb
18020F



Checker Neb
18040F



Spider Neb II
18021F

Important Notice: Item numbers that display an asterisk () reflect an item that will be discontinued or package change.



Ask for MEDX brand of Drive for a complete line of respiratory disposables.

respiratory

drive

To order call toll free: 877.224.0946

WWW.DRIVEMEDICAL.COM



COMES WITH
DECALS TO CUSTOMIZE
PRODUCT FOR CHILD!



SPECIFICATIONS 18010

METHOD OF NEBULIZATION: Piston Compressor

ELECTRICAL REQUIREMENTS: 120 V - 60 HZ

PARTICLE SIZE: Less than 5 Microns

MAXIMUM PRESSURE: 30 psi

OPERATING PRESSURE: 16 psi

UNIT DIMENSIONS: 10.4" x 5" x 3.78"

WEIGHT: 3.74 lbs.

**OPERATION HUMIDITY AND
TEMPERATURE RANGE:** 50°F-104°F 30%-95%RH

**STORAGE HUMIDITY AND
TEMPERATURE RANGE:** 13°F-140°F 30%-95%RH

WARRANTY: 5 years

Aire Bus

Pediatric Nebulizer (Piston Powered)

18010

1/bx

NEB KIT 500 Nebulizer Kit, 50/cs
(Contains 1 each ampule mouth
piece and tubing)

FEATURES:

- Designed with graphics to appeal to children.
- **Powerful piston pump is efficient, dependable and quiet.**
- Pediatric mask, adult mask, tubing, filter and mouthpiece are included.
- **Warranty: 5 Years**



Ask for MEDX brand of Drive
for a complete line of
respiratory disposables.

Important Notice: Item numbers that display an asterisk () reflect an item that will be discontinued or package change.

Checker® Nebulizer (Piston Powered)

18040-Y

Yellow, 1/bx

18040-P

Pink, 1/bx

18040F

Filter for Checker Nebulizer, 1/ea.

NEB KIT 500

Nebulizer Kit, 50/cs (Contains 1 each ampule mouth piece and tubing)

EASY TO
REPLACE FILTER!

FEATURES:

- Checker® cab design appeals to children.
- Available in either yellow or pink.
- Easy to replace filter is located under the front hood.
- Electrical cord located under rear hood.
- Very quiet operation.
- Powerful, dependable piston powered pump.
- Comes complete with ampule, mouth piece, pediatric aerosol mask, tubing, two replacement filters and instructions.

5 Year Limited Warranty.

LATCH HOOK DOUBLES
AS CUP HOLDER

COMES WITH PEDIATRIC
AEROSOL MASK!

18040-Y



SPECIFICATIONS

18040

METHOD OF NEBULIZATION: Piston Compressor

ELECTRICAL REQUIREMENTS: 120 V - 60 HZ

PARTICLE SIZE: Less than 5 Microns

MAXIMUM PRESSURE: 30 PSI

OPERATING PRESSURE: 16 PSI

UNIT DIMENSIONS: 11.8" x 7.7" x 4.3"

WEIGHT: 3.7 lbs.

OPERATION HUMIDITY AND TEMPERATURE RANGE: 50°F-104°F 30%-95%RH

STORAGE HUMIDITY AND TEMPERATURE RANGE: 13°F-140°F 30%-95%RH

WARRANTY: 5 years

18040-P



respiratory

drive
WWW.DRIVEMEDICAL.COM

To order call toll free: 877.224.0946

Important Notice: Item numbers that display an asterisk () reflect an item that will be discontinued or package change.



18112

Oxygen Cylinder Racks

- 18111 Use with 6 "D/E" Style Cylinders, 16" x 10.5" x 9.5", 1/cs
- 18112 Use with 12 "D/E" Style Cylinders, 21" x 17" x 10", 1/cs
- 18113 Use with 12 "M6" Style Cylinders, 17" x 12" x 9.5", 1/cs

FEATURES:

- Chrome Plated Steel.
- Mounting brackets on bottom for in truck installation.
- Heavy duty welded construction.
- Available in three sizes.

Oxygen Cart, Adjustable Handle Height with Silver Vein Finish

13002SV-6 (Has replaced 13002-2), 6/cs

FEATURES:

- Lightweight silver vein cart can accommodate one "D", or "E" size cylinder.
- Handle is adjustable to accommodate most individuals.
- Large, composite wheels allow for easy, safe maneuvering.
- Limited Lifetime Warranty.



SILVER VEIN FINISH
EASY TO MAINTAIN &
LESS INSTITUTIONAL
LOOKING!

13002SV-6

13001SV-2

Dual Oxygen Cart, Adjustable Handle Height with Silver Vein Finish

13001SV-2 2/cs

FEATURES:

- Lightweight silver vein cart can accommodate two "D" or "E" size cylinder.
- Handle is adjustable to accommodate most individuals.
- Large, composite wheels allow for easy, safe maneuvering.
- Limited Lifetime Warranty.

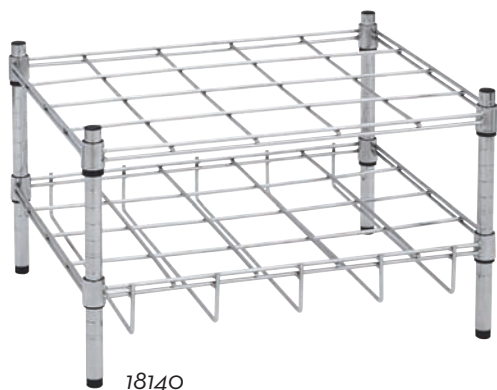
SPECIFICATIONS

Item #	Height (highest)	Height (lowest)	Wheelbase Overall (width)	Product Weight	Carton Shipping Weight	Weight Limit
13002SV-6	44"	39.5"	12"	5 lbs.	11.5 lbs.	80 lbs.
13001SV-2	42"	32"	14.5"	9 lbs.	12 lbs.	80 lbs.



Ask for MEDX brand of Drive for a complete line of respiratory disposables.

Important Notice: Item numbers that display an asterisk () reflect an item that will be discontinued or package change.



18140

Oxygen Cylinder Racks

18140

Use with 20 Cylinder E, D, C or M9 Rack, 1/cs

18141

Use with 28 Cylinder E, D, C or M9 Rack, 1/cs

FEATURES:

- Comes with bolt down feet.
- Chrome plated finish.
- Reinforced double bar shelf frames.
- Modular design saves on shipping.
- Available in two sizes.



18144

Oxygen Cylinder Carts

18143

Use with 12 Cylinder E, D, C or M9 Cart, 1/cs

18144

Use with 20 Cylinder E, D, C or M9 Cart, 1/cs

18145

Use with 28 Cylinder E, D, C or M9 Cart, 1/cs

FEATURES:

- Dual lifting handles.
- 5" Swivel Casters, two with brakes.
- Quiet and easy.
- Chrome plated finish.
- Module design saves in shipping.
- Available in four sizes.



18114

Oxygen Rack

18114

Oxygen Rack, Economy, 1/cs

FEATURES:

- Holds 6 E, D or C cylinders.
- Perfect for patients homes.
- Chrome finish.



18116

Oxygen Rack

18116

Oxygen Rack, Economy, 1/cs

FEATURES:

- Holds 6 M6 cylinders.
- Perfect for patients homes.
- Chrome finish.



HS-2

Oxygen Rack for H/M Large Cylinders

HS-2

Sturdy, Durable

Plastic Design.

Weighs only 7 lbs., 2/cs

Important Notice: Item numbers that display an asterisk () reflect an item that will be discontinued or package change.



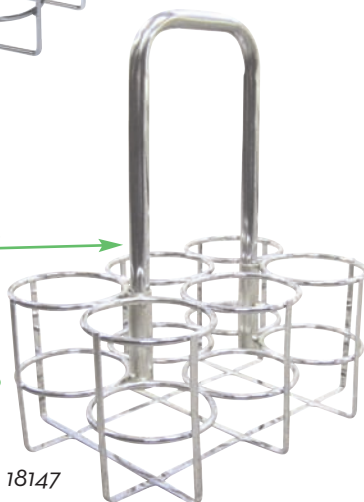
Ask for MEDX brand of Drive
for a complete line of
respiratory disposables.



18146



**TWO EASY
PUSH BUTTONS
FOR
TOOL FREE
ASSEMBLY.**



18147



18148

**NEW KNOCK
DOWN DESIGN
SAVES ON FREIGHT!**



**TWO EASY
PUSH BUTTONS
FOR TOOL FREE
ASSEMBLY.**



Oxygen Cylinder Carrier

18146

Use with 4 E/D Cylinder
Hand Carrier, 2/cs

FEATURES:

- Holds 4 E or D cylinders.
- Durable and lightweight.
- Makes deliveries easy.
- Safe way to transport cylinders.

Oxygen Cylinder Carrier

18147

Use with 6 Cylinder M4 (A)
or M6 (B) Carrier, 1/ea

FEATURES:

- Small, compact and lightweight.
- Holds six B or A cylinders.
- Beautiful enough to leave in the patients home.
- Doubles as a cylinder rack.
- Chrome plated finish.

Oxygen Cylinder Carrier

18148

Use with 6 Cylinder M9 (C)
Hand Carrier, 1/ea

FEATURES:

- Small, compact and lightweight.
- Holds six C cylinders.
- Beautiful enough to leave in the patients home.
- Doubles as a cylinder rack.
- Chrome plated finish.

Oxygen Cylinder Stand

18149

Holds M60, M90, MM and H&T, 1/ea

FEATURES:

- Reversible clamp.
- Holds Cylinders from 7" to 9" diameters.

Important Notice: Item numbers that display an asterisk () reflect an item that will be discontinued or package change.



Ask for MEDX brand of Drive
for a complete line of
respiratory disposables.

Regulators

870 REGULATORS

18300G	Barb Outlet, Pediatric, Green, 1/bx, Liter Flow Increments: 0, .03, .06, .12, .25, .5, .75, 1, 1.5, 2, 2.5, 3
18301G	Barb Outlet, Adult, Green, (Has replaced 18301), 1/bx Liter Flow Increments: 0, .12, .5, 1, 1.5, 2, 2.5, 3, 4, 6, 8
18302G	Barb Outlet, Adult, Green, 1/bx Liter Flow Increments: 0, .12, .5, 1, 1.5, 2, 3, 4, 6, 8, 10, 15
18302DG	Diss Outlet, Adult, Green, 1/bx Liter Flow Increments: 0, .12, .5, 1, 1.5, 2, 3, 4, 6, 8, 10, 15
18302DEL	Diss Outlet, Adult, Green, 1/bx Liter Flow Increments: 0, .12, .5, 1, 1.5, 2, 3, 4, 6, 8, 10, 15

870 MINI REGULATORS

18301GM	Barb Outlet, Adult, Green, (Has replaced 18301, 18311), 1/bx Liter Flow Increments: 0, .12, .5, 1, 1.5, 2, 2.5, 3, 4, 6, 8
18302GM	Barb Outlet, Adult, Green, (Has replaced 18312), 1/bx Liter Flow Increments: 0, .12, .5, 1, 1.5, 2, 3, 4, 6, 8, 10, 15

540 REGULATORS

18303G	Nut Connector w/Screw Outlet, Green, 1/bx Liter Flow Increments: 0, .12, .5, 1, 1.5, 2, 2.5, 3, 4, 5, 6, 8
18304G	Nut Connector w/Screw Outlet, Green, 1/bx Liter Flow Increments: 0, .12, .5, 1, 1.5, 2, 3, 4, 6, 8, 10, 15

540 MINI REGULATORS

18303GM	Nut Connector w/Barb Outlet, Green, 1/bx Liter Flow Increments: 0, .12, .5, 1, 1.5, 2, 2.5, 3, 4, 5, 6, 8
18304GM	Nut Connector w/Barb Outlet, Green, (Has replaced 18322G), 1/bx Liter Flow Increments: 0, .12, .5, 1, 1.5, 2, 3, 4, 6, 8, 10, 15

FEATURES:

- New click style flow control.
- Lightweight uni-body design.
- Meets or exceeds accuracy standards for ASTM, American National and CGA.
- UL Approved.



Elongated Regulator For Humidifier

18302DEG	870 Style with DISS Outlet, 1/ea Elongated to Attach Humidifier Bottle Without Elbow Attachment.
----------	--

Important Notice: Item numbers that display an asterisk () reflect an item that will be discontinued or package change.

ALL REGULATORS
AVAILABLE IN GREEN.



870

For use with:
M6, ML6, B, C,
D, E Post
or Toggle
Cylinders



870

For use with:
M6, ML6, B, C,
D, E Post
or Toggle
Cylinders



540

For use with:
M60, M90, H, J,
T Cylinders



870 Mini

M6, ML6, B, C, D, E Post
or Toggle Cylinders



Replacement O-Rings for Oxygen Regulators

SEAL100 Made From Brass
and Viton Rubber Packed, 10/bag

respiratory

drive
WWW.DRIVEMEDICAL.COM

To order call toll free: 877.224.0946

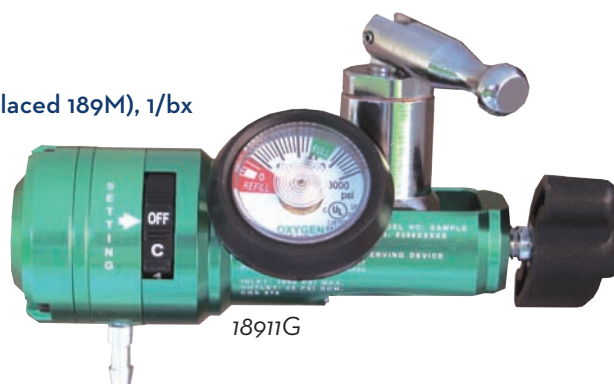


Oxygen Conserving Device, Single Lumen

18911G Single Lumen Conserver, Green, (Has replaced 189M), 1/bx

FEATURES:

- Sleek and contoured 1" diameter. External modular configuration.
- Attractive green anodize finish.
- Single-lumen outlet and fully pneumatic.
- 5:1 savings ratio



18911G

Oxygen Conserving Device, Electric

18900 1/bx

FEATURES:

- Delivers consistent doses of oxygen at the clinically optimal time.
- Automatically turns on/off with every breath.
- Switch to control one to six liter continuous flow.
- All brass construction.
- Uses standard C-size batteries.
- Saving ratio: 5:1.
- Uses standard cannula.
- 2 Year Limited Warranty.



18900

ITEM #	18900
SAVINGS RATIO	5/1
WEIGHT	18 oz.
PULSE MODE POSITIONS	5
BATTERY TYPE	"C"
WARRANTY	2 Years



Oxygen Conserving Device, Dual Lumen

18910G Pneumatic Conserving Device, Green, (Has replaced 18910), 1/bx

FEATURES:

- 3:1 Savings ratio.
- Laser etched.
- Dual lumen.

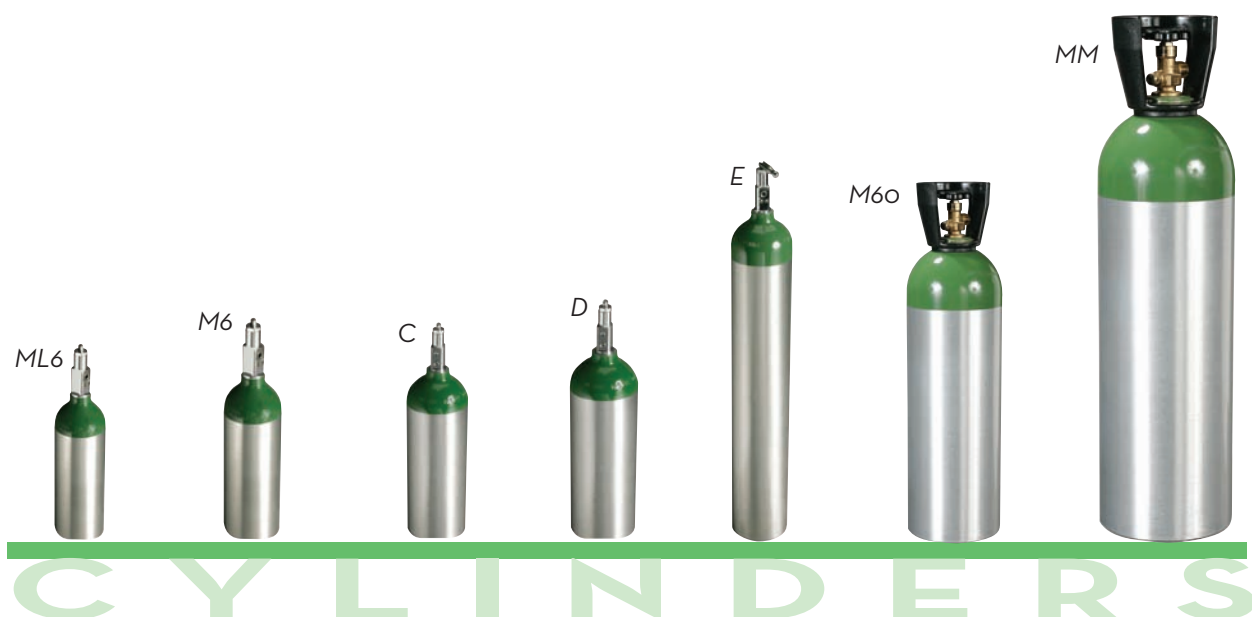


18910G



Ask for MEDX brand of Drive for a complete line of respiratory disposables.

Important Notice: Item numbers that display an asterisk () reflect an item that will be discontinued or package change.



CYLINDERS AVAILABLE BY THE PALLET ONLY

CYL E-P	Cyl. E with Post Valve, 81 per pallet
CYL E-T	Cyl. E with Toggle Valve, 81 per pallet
CYL D-P	Cyl. D with Post Valve, 81 per pallet
CYL D-T	Cyl. D with Toggle Valve, 81 per pallet
CYL C/M9	Cyl. C with Post Valve, 81 per pallet
CYL C/M9T	Cyl. C with Toggle Valve, 81 per pallet
CYL M6/B-POST	Cyl. ML6 with Post Valve, 144 per pallet
CYL M6/B-TOGGLE	Cyl. ML6 with Toggle Valve, 144 per pallet
CYL M 60	Cyl. M60 with CGA 540 Valve and Black Carry Handle, 1/ea

CYL M 90	Cyl. M90 with CGA 540 Valve and Black Carry Handle, 1/ea
CYL MM	Cyl. MM with CGA 540 Valve and Black Carry Handle, 1/ea
18512-6*	Cyl. MC with Toggle Valve, 6/cs
18520-6*	Cyl. ML6 with Post Valve, 6/cs
18522-6*	Cyl. ML6 with Toggle Valve, 6/cs
18535-6*	Cyl. D with Post Valve, 6/cs
18540-6*	Cyl. D with Toggle Valve, 6/cs
18550-8*	Cyl. M6 with Post Valve, 8/cs

CONTINUOUS FLOW (All times approximate – For information purposes only.)

CYLINDER SIZE	CU. FT./LITER	0.5 LPM	1 LPM	1.5 LPM	2 LPM	2.5 LPM	3 LPM	4 LPM	6 LPM	WT	LBS.
ML6	4.0/113	3:46	1:53	1:15	0:56	0:45	0:37	0:28	0:18		2.6
M6 (B)	5.8/164	5:29	2:44	1:49	1:22	1:05	0:54	0:41	0:27		2.9
M9 (C)	8.8/248	8:16	4:08	2:45	2:04	1:39	1:22	1:02	0:41		4.4
D	14.6/415	13:49	6:54	4:36	3:27	2:45	2:18	1:43	1:09		5.6
E	24.1/682	22:44	11:22	7:34	5:41	4:32	3:47	2:50	1:53		8.0
M60	60.9/1724	57:27	28:27	19:09	14:21	11:29	9:34	7:10	4:47		23.2
MM	121.9/3452	115:04	57:32	38:21	28:46	23:00	19:10	14:23	9:35		40.7

SPECIFICATIONS

Part No.	Size	Service Pressure (psi/bar)	Diameter (in/mm)	Length (in/mm)	Empty WT (lbs/kgs)	Capacity Oxygen (cu ft/liters)
(Post/Toggle)						
18542-6/18544-6	E	2015psi/139	4.38in/111.3	25.93/659	8.65/3.92	24/680
18535-6/18540-6	D	2015psi/139	4.38in/111.3	16.7/424	5.92/2.68	15/425
18550-8/18552-8	M6	2216psi/153	3.205in/81.50	11.6/295	2.52/1.14	6/170
18510-6/18512-6	MC	2015psi/139	4.38in/111.3	10.88/276	3.86/1.75	9/225
18520-6/18522-6	ML6	201psi/139	4.38in/111.3	7.68/195	2.96/1.34	6/170
CYL M 60	M60	2216psi/153	7.25in/184.2	23.1in/586	22.3/10.1	60/1699
CYL M 90	M90	2216psi/153	7.25in/184.2	32.4in/823	30.3/13.7	90/2550
CYL MM	MM	2216psi/153	8.00in/203.2	35.7in/907	39.0/17.7	122/3455

Important Notice: Item numbers that display an asterisk () reflect an item that will be discontinued or package change.



respiratory

To order call toll free: 877.224.0946

drive

WWW.DRIVEMEDICAL.COM

Soft Nasal Cannula - Non-Kink Tubing

Made of extra-soft disposable material for long-term use. Comes standard with non-kink tubing in various lengths up to 50 feet. Adjustable tubing fits comfortably over the ears to hold the cannula firmly in place, affords complete freedom of movement.

Adult available in all lengths; Pediatric available in 7-foot length.

Curved

SOFT 001	Cannula Only, 50/cs
SOFT 004	4' Length, 50/cs
SOFT 007	7' Length, 50/cs
SOFT 007 P	7' Length, 50/cs
SOFT 014	14' Length, 50/cs
SOFT 025	25' Length, 25/cs
SOFT 050	50' Length, 20/cs

COMPARE TO:

MEDX	Hudson®
SOFT 007	1110
SOFT 014	1810
SOFT 025	1812
SOFT 050	1814



Curved SOFT 007



Straight SOFT 107



Compares to Salter™
Cozy Cannula SOFT 207

Straight Tipped

SOFT 100	Cannula Only, 50/cs
SOFT 104	4' Length, 50/cs
SOFT 107	7' Length, 50/cs
SOFT 107 P	7' Length, 50/cs
SOFT 114	14' Length, 50/cs
SOFT 125	25' Length, 25/cs
SOFT 150	50' Length, 20/cs

The Cozy Cannula, Non Kinking Tubing

SOFT 200	Cannula, 50/cs
SOFT 204	4' Length, 50/cs
SOFT 207	7' Length, 50/cs
SOFT 207 P	7' Length, 50/cs
SOFT 214	14' Length, 50/cs
SOFT 225	25' Length, 25/cs
SOFT 250	50' Length, 20/cs

COMPARE TO:

MEDX	Hudson®	Salter®
SOFT 200	1821	1606
SOFT 204	1827	1600-4
SOFT 207	1820	1600
SOFT 214	1817	1600-14
SOFT 225	1823	1600-25
SOFT 250	1831	1600-50



Dual Lumen
Consaver Cannula SOFT307

Dual Lumen

Consaver Cannula

SOFT 304	4' Length, 25/cs
SOFT 307	7' Length, 25/cs

Fits All Cannulas with Universal Connector

Fits standard barbed nipples and DISS (Diameter Indexed Stainless Steel) fittings. Comes in straight tipped style Adult & Pediatric cannula's only.

SOFT 107U	7' Cannula, Adult, 50/cs
SOFT 107PU	7' Cannula, Pediatric, 50/cs



Universal Connector

All of our tubing is made in translucent green to be in compliance with JACO/OSHA tripping hazard recommendations.

**Important Notice: Item numbers that display an asterisk (*) reflect an item that will be discontinued or package change.*

Oxygen Tubing - Non Kink

Made of soft disposable material. Three channel safety construction provides uninterrupted flow of oxygen. When uncoiled, tubing lies out straight...it has no memory. Thus, "torque" or pull on the cannula is eliminated. Therefore, tubing will not coil up on the floor.

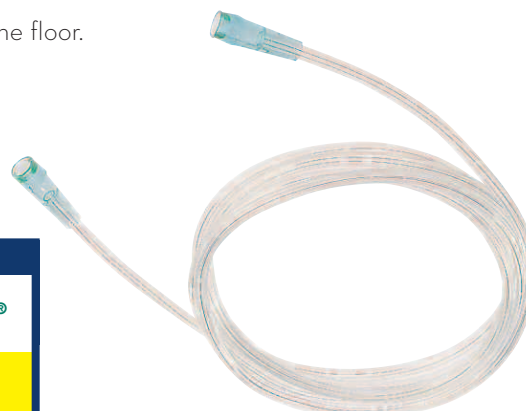
TUB NK 07	7' Length, 50/cs
TUB NK 14	14' Length, 50/cs
TUB NK 25	25' Length, 25/cs
TUB NK 40	40' Length, 20/cs
TUB NK 50	50' Length, 20/cs

COMPARE TO:

	MEDX <small>A Division of Drive Medical</small>	Hudson®	Salter®
TUB NK 07	1112	2002	
TUB NK 14	1118	2014	
TUB NK 25	1119	2025	
TUB NK 40	1124	2040	
TUB NK 50	1120	2050	



Universal Connector



Oxygen Tubing

Oxygen Tubing with Universal Connector

TUB NK 07 U	7' Length, 50/cs
TUB NK 25 U	25' Length, 25/cs

Oxygen Mask

Transparent mask made with soft anatomical form for better fit. Wide adjustable elastic strap. Available in adult or pediatric sizes.

MASK 002A	Adult, 50/cs
MASK 002P	Pediatric, 50/cs

COMPARE TO:

	MEDX <small>A Division of Drive Medical</small>	Hudson®	Salter®
Mask 002A	1040	8115	
Mask 002P	1035	1123	



Mask 002A



Mask 002P



Mask 003A

Oxygen Mask with 7' Tubing

Transparent oxygen mask is made with 7 feet of crush resistant safety tubing to prevent occlusion of oxygen supply. Comes on both adult and pediatric sizes.

MASK 003 A	Adult, 50/cs
MASK 003 P	Pediatric, 50/cs

All of our tubing is made in translucent green to be in compliance with JACO/OSHA tripping hazard recommendations.

Important Notice: Item numbers that display an asterisk () reflect an item that will be discontinued or package change.



Ask for MEDX brand of Drive for a complete line of respiratory disposables.

respiratory

drive

To order call toll free: 877.224.0946

WWW.DRIVEMEDICAL.COM

Aerosol Mask

Soft clear aerosol mask with anatomical form. Fit maintains proper positioning behind the head, giving greater comfort. Available in adult or pediatric sizes.

MASK 001 A Adult Mask, 50/cs

MASK 001 P Pediatric Mask, 50/cs

COMPARE TO:



Hudson® Salter®

Mask 001A 1084 8100

Mask 001P 1080 1120



Mask 001A



Mask 001P

Non-Rebreathing Mask

Made of soft disposable material with low resistance check valve to prevent rebreathing of exhaled gas. Has safety vent to allow for entrainment of room air. Odorless vinyl comes complete with 7' of non kink tubing and has adjustable nose clip in adult and pediatric sizes.

MASK 009A Adult Mask, 50/cs

MASK 009P Pediatric Mask, 50/cs



Mask 009A



Mask 009P

Tracheotomy Mask

Made of soft vinyl construction, both have swivel adapters and can be used with 22mm corrugated tubing, available in adult & pediatric sizes.

MASK 007A Adult Mask, 50/cs

MASK 007P Pediatric Mask, 50/cs



Mask 007A



Mask 007P

All of our tubing is made in translucent green to be in compliance with JACO/OSHA tripping hazard recommendations.

**Important Notice: Item numbers that display an asterisk (*) reflect an item that will be discontinued or package change.*



Ask for MEDX brand of Drive for a complete line of respiratory disposables.



NEBKIT 700

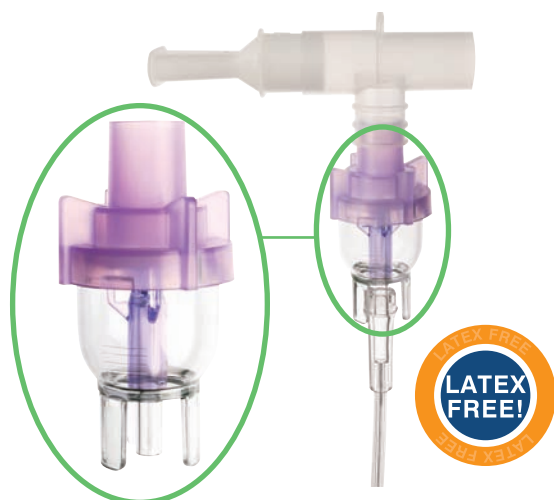
NEBKIT 600



NEBKIT 500



NEBKIT 500R-12



Nebulizer Kit (Disposables)

Nebulizer with tee adapter, 7' tubing, mouthpiece and reservoir tube. Provides 80% of particles in respirable range.

NEB KIT 500
NEB KIT 600

50/cs
Nebulizer Cup,
7' Crush Resistant
Tubing, Adult Aerosol
Mask, 50/cs

NEB KIT 700

Nebulizer Cup,
7' Crush Resistant
Tubing, Pediatric Aerosol
Mask, 50/cs

NEB KIT 500R-12 Retail, 12/bx

Reusable Nebulizer Kit

18254

Contains Mouthpiece,
"T" reusable Neb Cup
and 7' Tubing, 10/cs

FEATURES:

- Anti-spill "T" design.
- Leak-proof and secure seal with simple $\frac{1}{4}$ turn assembly design.
- Very low dead volume (0.7cc).
- High medication bowl capacity (cc)
- Graduated volume (cc) markings on bowl.
- Nebulizes in upright positions or at angles up to 45°.
- Latex Free.
- Dishwasher Safe.

Humidifier Bottle

HUM - 001

For Use with all Oxygen Sources:
Concentrators, Liquid, Tank,
and Wall Outlets, 50/cs

FEATURES:

- Audible alarm activates at 6 psi.
- Rigid and durable wing-nut and lid.
- No aluminum fitting in stem: therefore, it eliminates shredded aluminum diffuser so often found in cheaper models. Soft plastic diffuser reduces clogging due to mineral build-up.
- Easy-on/easy-off lid and jar thread, provides positive seal.
- Translucent jar provides improved visibility of jar contents.



HUM 001

COMPARE TO:

		Hudson®	Salter®
NEBKIT 500	1883	8900	
NEBKIT 600	1885	8924	
NEBKIT 700	1886	8906	
HUM 001	N/A	7100	

Important Notice: Item numbers that display an asterisk () reflect an item that will be discontinued or package change.



Ask for MEDX brand of Drive
for a complete line of
respiratory disposables.

respiratory

drive

To order call toll free: 877.224.0946

WWW.DRIVEMEDICAL.COM

Plastic Cylinder Wrenches (E-Keys)

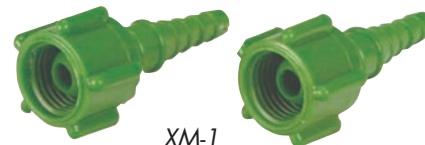
EK-1 25/pk
Also known as "E Keys".
Used on Post Valve Oxygen Cylinder
to Open and Close.



E-Key

Oxygen Regulator Connector Swivel

XM-1 (XMAS Trees), 25/pk
For Use on Concentrator or Regulator with DISS
Fitting in Order to Attach Cannula.



XM-1

Cylinder Wrench

18501 For Use with Small Cylinders
used in Most Portable Oxygen
Set Ups, 10/pkg



18501

FEATURES:

- Has place to store Viton rubber/ brass sealing washer.
- Used to open post valves.
- Can be used to assist in install or removal of both large wing nut and small t-bar regulators.

Concentrator Water Trap

CON 900 25/bx



CON 900

FEATURES:

- Easy inline downstream installation with small bore tubing. Can be cleaned with detergent or in a vinegar bath.

Tubing Extension Connector

CON 400 Swivel, 50/bg
CON 500 Straight, 50/bg
CON 550 Ridged, 50/bg
CON 700 Y Connector, 10/bg



CON 400



CON 500



CON 550



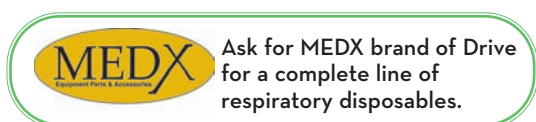
CON 700

FEATURES:

- Rigid plastic tubing connector allows extension tubing to be connected to present cannula for greater length(s).

COMPARE TO:

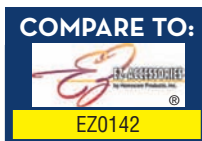
	MEDX	Hudson®	Salter®
CON 400		N/A	1220
CON 500		N/A	2005
CON 550		1420	1215
XM-1		2555	1205



Important Notice: Item numbers that display an asterisk () reflect an item that will be discontinued or package change.



S5005-1



Universal Oxygen Cylinder Carry Bag for Scooter

S5005-1 (Has replaced S5005), 1/cs



FEATURES:

- Adjustable, for use with "D" and "E" cylinders.
- Top and bottom clasps easily attach for secure fit to scooter.
- 1 carry handle.
- For use with most manufacturers scooters.
- Made of durable, easy-to-clean nylon.
- Size: 26.5" x 7.5" x 4.75"
- Warranty: 90 days.



STDS6008-1



Universal Oxygen Cylinder Carry Bag for Wheelchair

STDS6008-1 (Has replaced STDS6008), 1/cs



FEATURES:

- Adjustable, for use with "D" and "E" cylinders.
- Top and bottom clasps easily attach for secure fit to wheelchair.
- 2 carry handles.
- For use with most manufacturers wheelchairs.
- Made of durable, easy-to-clean nylon.
- Size: 26.5" x 7.5" x 4.75"
- Warranty: 90 days.



18100

Oxygen Cylinder Shoulder Bags

18100

Use with M6 Cylinders, 1/ea

Former MEDX #1600

18101

Use with ML6/C Cylinders, 1/ea

Former MEDX #1601

18102

Use with D Cylinders, 1/ea

Former MEDX #1602

FEATURES:

- Attractive, durable, lightweight nylon construction.
- Shoulder strap is easy to adjust.
- Cannula holes allow for tubing to be connected to regulator when bag is closed.
- Comes with carry pouch to carry personal items.
- 3 Year Limited Warranty.

Important Notice: Item numbers that display an asterisk () reflect an item that will be discontinued or package change.



Ask for MEDX brand of Drive for a complete line of respiratory disposables.

respiratory

To order call toll free: 877.224.0946

drive

WWW.DRIVEMEDICAL.COM



1650-CPap

CPAP Carry Case

1650-CPAP Shoulder Bag for Most Cpap Models, 1/ea

FEATURES:

- Light weight reinforced nylon carry case fits most name brand units.
- Has enough room to carry name brand units with plenty of room for accessories i/e tubing, headgear and mask.



18252

CPAP Carry Case

18252 Shoulder Bag for Most Cpap Models, 1/ea

FEATURES:

- Light weight reinforced nylon carry case fits most name brand units.
- Has enough room to carry name brand units with plenty of room for accessories i/e tubing, headgear and mask.



1610

Oxygen Cylinder Backpack

1610 Use with C/M9 Cylinders, 1/ea

FEATURES:

- Backpack, dual shoulder carry bag.

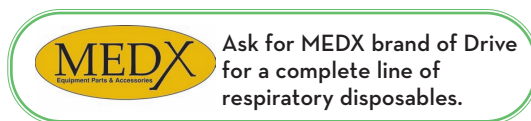


18030

Universal Nebulizer Carry Bag

18030 For Use with Most Manufacturers
Compact Nebulizers, 1/ea

Important Notice: Item numbers that display an asterisk () reflect an item that will be discontinued or package change.





18600

Suction Machine

18600 Heavy Duty Suction Machine, 1/cs

18605 AC/DC Suction Machine

with Carry Case, 1/cs

18600-KIT Tubing and filter kit for 18600, 1/bx

FEATURES:

- Controlled vacuum from 23inHG.
- E-Z grip handle.
- Base w/cord wrap.
- UL approved.
- Two Years Limited Warranty



18605



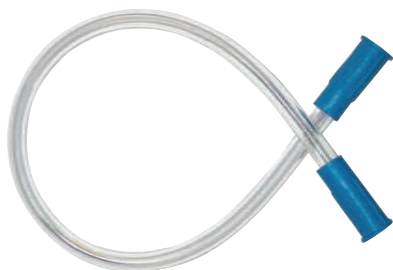
18600-BOTTLE

Disposable Collection Bottle

18600-BOTTLE 12/cs

FEATURES:

- 12 jars and lids/cs.
- Lid comes complete with ball float cut off.
- 800 CC capacity.
- For Use with 186605.



Suction Tubing

Suction Tubing

SUCP TUBING 10 10" Suction Tubing, Blue Tip,
10" to Connect Bottle to
Machine, 1/ea

SUCP TUBING 72 72" Suction Tubing, Blue Tip,
72" to Connect Bottle
to Catheter, 1/ea



Ask for MEDX brand of Drive
for a complete line of
respiratory disposables.

Important Notice: Item numbers that display an asterisk () reflect an item that will be discontinued or package change.

respiratory

drive

WWW.DRIVEMEDICAL.COM

To order call toll free: 877.224.0946

Pulse Oximetry from Drive

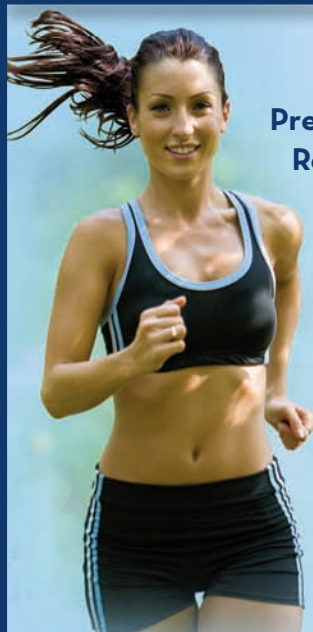
Monitor Your Heart Rate & Blood Saturation Anytime

Health-Ox Fingertip Pulse Oximeter

Item # 18710

Item # 18711

Med-Ox Fingertip Pulse Oximeter



**No
Prescription
Required**

Health-Ox provides you with instant and accurate oxygen saturation and heart rate feedback while you exercise.



**Comes in attractive
blister pack!**



**Prescription
Required**

Med-Ox is the perfect oxygen saturation and heart rate monitoring device to assist in your doctor advised exercise program. Provides you with security in knowing when to increase your litre flow.



**Comes in attractive
retail box!**



Health-Ox		Med-Ox
	Prescription Required	✓
✓	2 Digital Accuracy	✓
✓	Drop Tested Durability	✓
✓	Widest Finger Size Range 0.3" to 1.0"	✓
✓	4 Way Display	✓
✓	Low Battery Signal	✓

SPECIFICATIONS

Oxygen Saturation Display Range:	0% to 100, OLED
Pulse Rate Display Range:	18 to 321 pulses per minute
Oxygen Saturation Declared Accuracy Range (Arms*):	70-100% SpO2 \pm 2 digits
Pulse Rate Declared Accuracy Range (Arms*):	25-250 BPM \pm 3 digits
Temperature:	(Operating) +41° to +104°F (5°C to +40°C) (Storage/Transportation) -22° to +158°F (-30° to +70°C) Device temperature will not exceed 41°C as measured in a controlled environment
Humidity:	(Operating) 10% to 90% relative humidity, non condensing
Operating Altitude:	Up to 40,000 feet / 12,192 meters
Battery Life (Continuous)	2AAA batteries can operate continuously for 45 hours
Battery Life (Storage)	6 months minimum



Health-OX Finger Tip Pulse Oximeter

18710

Retail, 1/bx

18710B

Protective Boot for 18710, 1/ea

FEATURES:

- Four way display.
- Ideal for individuals that exercise.
- Portable, non-invasive spot check oxygen saturation and heart rate.
- Two AAA batteries can be continuously operated for 30 hours.
- Operation is simple and efficient.
- Nail polish tolerant.
- 2 year limited warranty.



Medi-OX

18711

1/bx

18710B

Protective Boot for 18711, 1/ea

FEATURES:

- Four way display.
- Portable, non-invasive spot check oxygen saturation and heart rate.
- Two AAA batteries can be continuously operated for 30 hours.
- Operation is simple and efficient.
- Nail polish tolerant.
- 2 year limited warranty.



NOW
COMES WITH
BLACK
RUBBER
PROTECTIVE
BOOT!



Clip Style Fingertip Pulse Oximeter

18705

1/bx

18705RB

Protective Boot for 18705, 1/ea

FEATURES:

- Two way display.
- Portable non-invasive, spot-check, oxygen saturation of arterial hemoglobin (SpO₂) and pulse rate of adult and pediatric patient at home, and hospital (including clinical use in an internist/surgery, anesthesia, intensive care and etc). Not for continuously monitoring.
- Uses AAA batteries.

Fingertip Pulse Oximeter

18700

Rubber Boot Style, 1/bx

18700Battery

3.6V Lithium Battery

1/2 AA Size, 1/ea

FEATURES:

- Two way display.
- A spot check monitor for blood oxygen saturation and heart rate using reflectance pulse oximetry (RPO).
- Long-lasting battery - over 1,000 hours.
- Highly resistant to many forms of motion.
- Completely nail polish tolerant, no matter how dark the color.
- 2 Year Limited Warranty.



Important Notice: Item numbers that display an asterisk () reflect an item that will be discontinued or package change.

respiratory

drive

To order call toll free: 877.224.0946

WWW.DRIVEMEDICAL.COM



MODELS 18250 & 18250E INCLUDES:



CPAP-TUB 6
6" Grey CPAP Tube



18252
Convenient Carry Bag



18255
Air Filter



18256
Water Chamber



18250



18250E

Celestia Continuous Positive Airway Pressure Machine

18250

1/bx

FEATURES:

- E-Z grip handle.
- The intelligent Drive positive airway pressure machine was designed for comfort, ease of use and reliability.
- Ultra quiet operation 30bda @ 10cmH₂O.
- Fully integrated heated humidifier.
- One of the smallest footprints in the industry.
- Lightweight design weighs only 3.08 lbs. (1.4 kg)
- Compliance software included with every unit.
- Includes both unit and compliance meters.
- Records AI/HI/SI.
- Ramp pressure starts at 3 cmH₂O.
- 10 ramp time settings up to 45 min.
- **New data card download technology coming spring 2009.**
- 2 year Limited Warranty.

Celestia Economy Continuous Positive Airway Pressure Machine

18250E

1/bx

FEATURES:

- E-Z grip handle.
- The intelligent Drive positive airway pressure machine was designed for comfort, ease of use and reliability.
- Ultra quiet operation 30bda @ 10cmH₂O.
- Fully integrated heated humidifier.
- One of the smallest footprints in the industry.
- Light weight design weighs only 3.08 lbs. (1.4 kg)
- Includes both unit and compliance meters.
- Ramp pressure starts at 3 cmH₂O.
- 10 ramp time settings up to 45 min.
- 2 year Limited Warranty.



Ask for MEDX brand of Drive
for a complete line of
respiratory disposables.

Important Notice: Item numbers that display an asterisk () reflect an item that will be discontinued or package change.



18232



CPAP

Nasal Masks

- 18232 Nasal CPAP Mask, Small w/Headgear, 1/bx
- 18233 Nasal CPAP Mask, Medium w/Headgear, 1/bx
- 18234 Nasal CPAP Mask, Large w/Headgear, 1/bx

FEATURES:

- One piece silicon design.
- 360° Dual swivel elbow port.
- Auto adjusting forehead support.
- Available in 3 sizes.



18203



Headgear

- 18235 Headgear Universal, 1/bx

FEATURES:

- Deluxe neoprene.
- Quick release clips.

CPAP

Full Face Masks

- 18203 Full Face Mask, Small w/Headgear, 1/bx
- 18204 Full Face Mask, Medium w/Headgear, 1/bx
- 18205 Full Face Mask, Large w/Headgear, 1/bx

FEATURES:

- Light weight silicone design.
- 360° Dual swivel elbow port.
- Flexible contour design.
- Air vent holes.
- One way valve design.
- Available in 3 sizes.

O₂ Analyzer

18580

FEATURES:

- 3-digit LCD display.
- Ultra light weight & stable.
- Maintenance free.
- Extended battery life.
- Easy calibration.
- Auto off.
- 2 Year Warranty.



SPECIFICATIONS:	MODEL # 18580
Resolution:	0.1% Oxygen
Warm-up Time:	None
Operating Temperature:	60° F - 104° F (15° C - 40° C)
Display Range:	0.0 - 99.9% Oxygen
Weight:	Approx. 3 oz
Response Time:	90% of final value < 15 seconds @ 77° F (25° C)
Accuracy and Linearity:	1% of full scale constant temperature, R.H and pressure when calibrated at full scale.

Part Numbers:
Check & Go Disposable 18580



O₂ Analyzer

18585

FEATURES:

- One touch calibration, with reminder.
- Long battery life (approx. 5,000 hours) (\$25 annual savings in batteries vs competition).
- Comfortable handheld design.
- Impact resistant & drip proof.
- Large LCD with 3 digit display.
- 2 Year Warranty on both analyzer and sensor.



18210

Value Pillow

- 18210 Complete System, includes Head Gear and 3 Sets of Pillows, Sm, Med. & Lg, 1/bx
18216 Head Gear, (Replacement), 1/bx

FEATURES:

- Proven technology
- Individual pillows for superior adjustability
- Easy to use
- Great value
- Soft headgear
- PROFITABLE!



18211

Replacement Parts

- 18211 Pillows, Small, Blue, 1/bx
18212 Pillows, Medium, Clear, 1/bx
18213 Pillows, Large, Green, 1/bx
18214 Flexible Tube Assembly, 1/bx
18215 Nasal Shell, 1/bx

FEATURES:

- Use with the Value Pillow System
- Made from premium grade silicone
- Also 100% compatible for use with Puritan Bennett® ADAM™ and Breeze™



18217

Universal Chin Strap

- 18217 1/bx

NEW!

**COMING
SOON...SOLSTICE II**



Solstice Oxygen Concentrator, 5 Liter

18055

5 Liter, 1/cs

18050

5 Liter with OCI, 1/cs

FEATURES:

- Delivers oxygen at 93% purity at 5 LPM.
- Very lightweight and portable, weighs only 36 lbs.
- Easy to transport.
- Quiet, only 45dba.
- Easy access to all filters.
- Convenient patient controls and handles.
- Provides an amber light on the front panel that illuminates if the units oxygen purity falls below 85%. (Only available on 18050 models)

SPECIFICATIONS

18055/50

DELIVERY RATE: 1-5 LPM

MAXIMUM RECOMMENDED LOW FLOW: 5 LPM

OUTLET PRESSURE: 8.5 psi

OXYGEN PURITY: 1-5 LPM 93%₊ 3%

OPERATING VOLTAGE RATING: 97-127 Volt, 60Hz

OPERATING ENVIRONMENT RANGE: 10° C to 35°
Humidity Range of 30% to 70%

POWER CONSUMPTION: 300 Watts Average

SOUND LEVEL: 45 dba

UNIT DIMENSION: 20" (H) x 14" (W) x 12" (D)

OPERATING SYSTEM: Time Cycle/Pressure Swing

WEIGHT: 36 lbs.

5 Year Limited Warranty

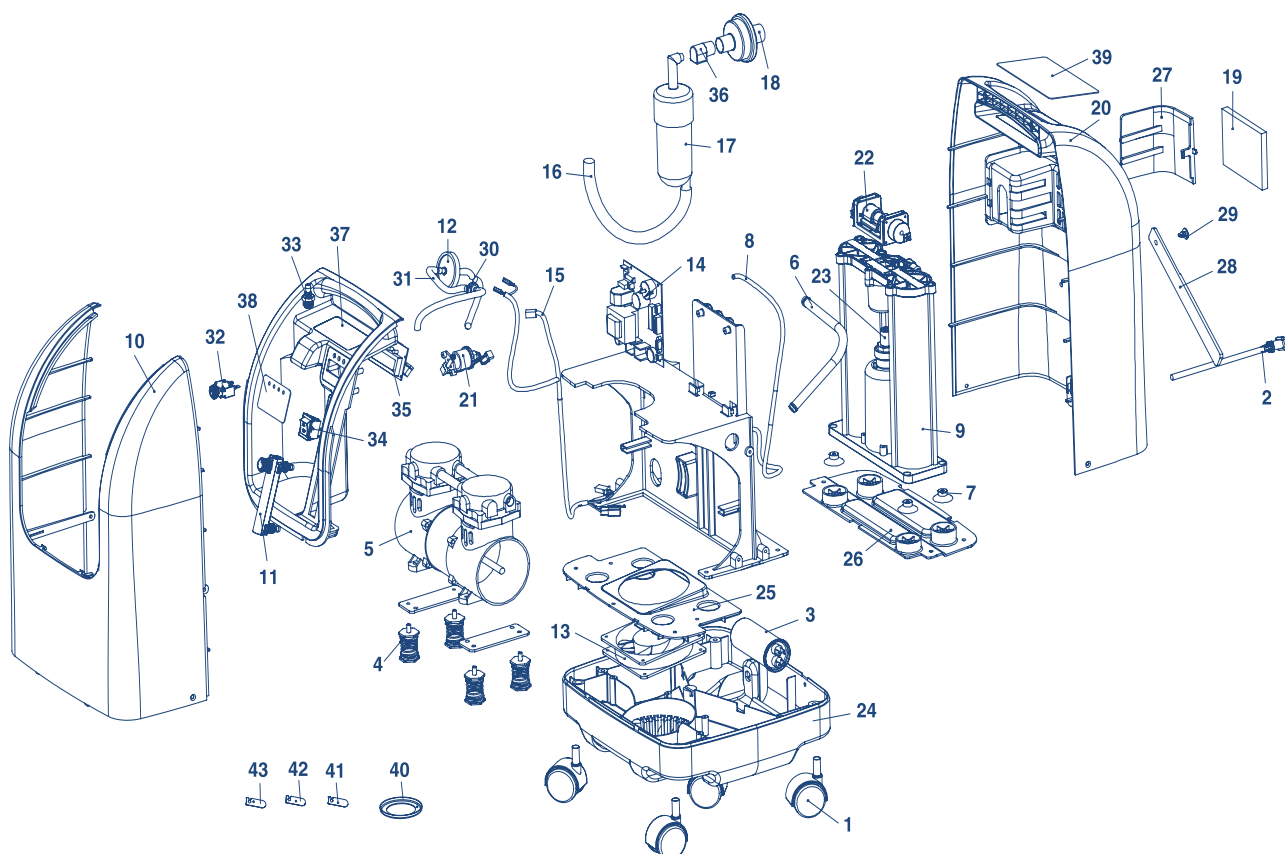
Important Notice: Item numbers that display an asterisk () reflect an item that will be discontinued or package change.

respiratory

drive
WWW.DRIVEMEDICAL.COM

To order call toll free: 877.224.0946

OXYGEN CONCENTRATOR PARTS DIAGRAM



No.	Name	Item No.	No.	Name	Item No.
1	CASTER WHEEL (4 EACH)	2AOC1P613A	23	PRESSURE REGULATOR AND PRODUCT TANK	2AOC2A301A
2	POWER CORD	2AOC1P509A	24	BASE	2AOC3P406D
3	COMPRESSOR CAPACITOR; INCLUDES CABLE TIES	2AOC1P505B	25	COMPRESSOR BRACKET	2AOC3P408A
4	COMPRESSOR MOUNTING (4 EACH); INCLUDES SPRINGS	2AOC1A602A	26	OXYGEN SYSTEM BRACKET	2AOC3P407A
5	COMPRESSOR; INCLUDES RELIEF VALVE AND ELBOW FITTING (2 EACH)	2AOC3A604A	27	ACCESS DOOR	2AOC3P404A
6	SILICONE TUBE; INCLUDE MOUNTING CLAMP (2 EACH)	2AOC3P902B	28	VELCRO	2AOC1P408A
7	OXYGEN SYSTEM MOUNTING (4 EACH)	2AAS1P111A	29	BUTTON	2AOC1P407A
8	SILICONE TUBE; INCLUDES CABLE TIES (2 EACH)	2AOC3P905B	30	CHECK VALVE	2AOC1A202A
9	SIEVE BEDS (ONLY 2 EACH)	2AOC2A300A	31	SILICONE TUBE(CHECK VALVE); INCLUDES CABLE TIES (2 EACH)	2AOC3P904A
10	FRONT COVER; INCLUDE FOAM	2AOC3A401A	32	CIRCUIT BREAKER	2AOC1P504A
11	FLOWMETER	2AOC1P511A	33	OUTLET FITTING	2AOC3P609B
12	BACTERIA FILTER	2AOC1P209A	34	POWER SWITCH	2AOC1P503B
13	FAN; INCLUDES 4 NUTS	2AOC1P510A	35	LCD	2AOC1P501B
14	PCB FOR 18055; INCLUDES 2 NUTS	2ADVOC502B	36	ADAPTER (INTAKE FILTER)	2AOC3P202A
14	PCB FOR 18050; INCLUDES 2 NUTS	2ADVOC517B	37	LABEL (INSTRUCTION)	2AOC1P701A
15	CABLE	2AOC1P506B	38	LABEL (PANEL)	2ADVOC017A
16	PVC TUBE (AIR INTAKE); INCLUDES CABLE TIES	2AOC3P903A	39	LABEL (PRODUCT)	2ADVOC013A
17	INTAKE BUFFER; INCLUDES CABLE TIES	2AOC1A302A	REBUILD KIT		
18	INTAKE FILTER	2AOC3P201A	40	CUP SEAL	2ACMOC001A
19	ENVIRONMENT FILTER	2AOC3P810A	41	LEAVE VALVE (BIG)	2ACMOC002A
20	REAR COVER; INCLUDES 4 NUTS AND FOAMS	2AOC3A402A	42	LEAVE VALVE (MIDDLE)	2ACMOC003A
21	OXYGEN SENSOR (NOT INCLUDED WITH 18055)	2AOC1P507A	43	LEAVE VALVE (SMALL)	2ACMOC004A
22	VALVE; INCLUDES 5 MOUNTING NUTS	2AOC1P308B			

Important Notice: Item numbers that display an asterisk () reflect an item that will be discontinued or package change.



COMPARISON CHART



HUDSON RCI®
Breathing made easier



OXYGEN
TUBING



MASKS

NEBULIZER
KITS



CONNECTORS



XMAS
TREES

Salter®	Hudson®	MedX	Description	Pack
1606	1821	SOFT 200	Adult Cannula Only	50/cs
1600-4	1827	SOFT 204	4' Adult Cannula	50/cs
1600	1820	SOFT 207	7' Adult Cannula	50/cs
1602	1838	SOFT 207P	7' Pediatric Cannula	50/cs
1600-14	1817	SOFT 214	14' Adult Cannula	50/cs
1600-25	1823	SOFT 225K	25' Adult Cannula	25/cs
1600-50	1831	SOFT 250	50' Adult Cannula	20/cs
N/A	N/A	SOFT 001	Adult Cannula Only	50/cs
N/A	N/A	SOFT 004	4' Adult Cannula	50/cs
N/A	1110	SOFT 007	7' Adult Cannula	50/cs
N/A	1810	SOFT 014	14' Adult Cannula	50/cs
N/A	1812	SOFT 025	25' Adult Cannula	25/cs
N/A	1814	SOFT 050	50' Adult Cannula	20/cs
2002	1112	TUB NK 07	7' Oxygen Tubing	50/cs
2014	1118	TUB NK 14	14' Oxygen Tubing	50/cs
2025	1119	TUB NK 25	25' oxygen Tubing	25/cs
2040	1124	TUB NK 40	40' Oxygen Tubing	20/cs
2050	1120	TUB NK 50	50' Oxygen Tubing	20/cs
1120	1080	MASK 001P	Aerosol Mask, Pediatric	50/cs
8100	1084	MASK 001A	Aerosol Mask, Adult	50/cs
1123	1035	MASK 002P	Oxygen Mask, Pediatric	50/cs
8115	1040	MASK 002A	Oxygen Mask, Adult	50/cs
8900	1883	NEBKIT 500	Neb Kit with Mouthpiece	50/cs
8924	1885	NEBKIT 600	Neb kit w/ Adult Aero Mask	50/cs
8906	1886	NEBKIT 700	Neb Kit w/ Ped Aero Mask	50/cs
2005	N/A	CON 500	Tubing Connectors	50/pkg
1215	1420	CON 550	Ridged Tubing Connector	50/pkg
1220	N/A	CON 400	Swivel Connectors	50/cs
1205	2555	XM-1	Xmas Trees	25/bg
N/A	N/A	CON 700	'Y' Connector'	N/A
7100	N/A	HUM 001	Humidifier Bottles	50/cs

Important Notice: Item numbers that display an asterisk () reflect an item that will be discontinued or package change.

respiratory

To order call toll free: 877.224.0946

drive

WWW.DRIVEMEDICAL.COM

