



Microlink



Summary

1. INTRODUCTION	6
1.1. Program operations	6
2. INSTALLATION.....	7
2.1. Cancelling installation	8
3. STARTING THE PROGRAM.....	10
3.1. Initial choice	10
3.2. Communication parameters	10
4. PRACTICAL EXAMPLE.....	12
5. MENU DESCRIPTION.....	16
5.1. Select race	16
5.1.1. Create new race	16
5.1.2. Open stored race.....	16
5.2. General Settings.....	17
5.3. General settings– retrieval from another race.....	18
5.4. Set report	18
5.5. Ranking mode	18
5.6. Run.....	18
5.7. Groups	19
5.8. Start List.....	19
5.8.1. Create list.....	20
5.8.2. Auto Insert.....	20
5.8.3. Importing data	21
5.8.4. Exporting data	21
5.8.5. Edit	22

5.8.6.	Print Start List	22
5.8.7.	Download data (Only for REI2)	23
5.8.8.	Other functions	24
5.8.9.	Group Management	25
5.9.	Run choice	26
5.10.	Penalty	27
5.11.	Start-Stop length	28
5.12.	Time difference	28
5.13.	Language	29
5.14.	MicroLink help	29
5.15.	About.....	29
5.16.	Other functions	29
6.	DATA ACQUISITION FROM STOPWATCH.....	30
6.1.	Items viewable in Race mode.....	31
6.2.	Items viewable in Training mode	32
6.3.	Printing rankings.....	34
7.	EXPORTING DATA.....	35
8.	MENU	36
8.1.	General menu	36
8.2.	Start List Menu	37
9.	MODIFICATION HISTORY.....	38

Index of Figures

Figure 1 – Installation – welcome.....	7
Figure 2 – Installation –data insertion.....	7
Figure 3 – Installation– data confirmation.....	8
Figure 4 – Installation – completed.....	8

Figure 5 – Installation – cancellation	9
Figure 6 – Installation – annulled	9
Figure 7 – Initial choice of stopwatch model.....	10
Figure 8 – Serial setting – connected status	11
Figure 9 – Serial setting – not connected status	11
Figure 10 – Serial setting – choices	11
Figure 11 – Example of ranking	12
Figure 12: Example of start list.....	13
Figure 13 – Example of Groups.....	14
Figure 14 – Stored race search.....	16
Figure 15 – General settings	17
Figure 16 – Ranking mode.....	18
Figure 17 – Run.....	18
Figure 18 – Groups	19
Figure 19 – Start List	19
Figure 20 – List created	20
Figure 21 – Auto Insert.....	21
Figure 22 – Operation in progress.....	22
Figure 23 – Search window	22
Figure 24 – Search window – search fields	22
Figure 25 –Start List Icon bar	24
Figure 26 – Ordering choices.....	24
Figure 27 – Group composition window	25
Figure 28 –Run choice window	26
Figure 29 –Penalty window	27
Figure 30 – Course length window	28
Figure 31 – Time difference.....	28

Figure 32 –Results window in Race mode.....	30
Figure 33 – Results window in Training mode.....	31
Figure 34 – Results window– operations	32
Figure 35 – Results window – items choice.....	32
Figure 36 – Results window – logical channel choice	32
Figure 37 – Results window– operations	34
Figure 38 – Results window –Active items	34

	MicroLink	Doc: SML_I_1151_001_E Versione: 1.1.5.1 Pagina 6 di 39
---	-----------	--

1. Introduction

MicroLink is a software created to simplify the dialogue between your stopwatch and a personal computer.

The program makes it possible to import or prepare competitor lists, start orders and group structures, to send them to the stopwatch and then to receive from the stopwatch the results that have been acquired.

The program functions in the standard Windows environment and makes it possible to use all the functions typical of this operating system, such as the resizing and moving around of windows, the selection of menus with the mouse, etc.

1.1. Program operations

The program is very simple to use and its operations can be broken down into the following phases:

1. Opening of race
2. Checking of communication parameters
3. Entering / acquisition of race data (names, groups, start orders)
4. Sending of data to the stopwatch
5. Acquisition of data from the stopwatch
6. Exporting of data to other programs
7. Saving of race.

Phases 3, 4 and 6 are not essential if data acquisition only is required. Phase 3 is necessary if you intend to use phase 4.

2. Installation

Run the MicroLink_xxxx.exe. program in the usual way for Windows

In the welcome window of the InstallShield installation program, click on <Next>



Figure 1 – Installation – welcome

In the next window enter your name and the company to which the licence for this software has been granted in the fields “User Name” and “Organization”.

If you want anyone who uses the computer to be able to use the product, select “Anyone who uses this computer”, otherwise select “Only for me” and click on <Next>.

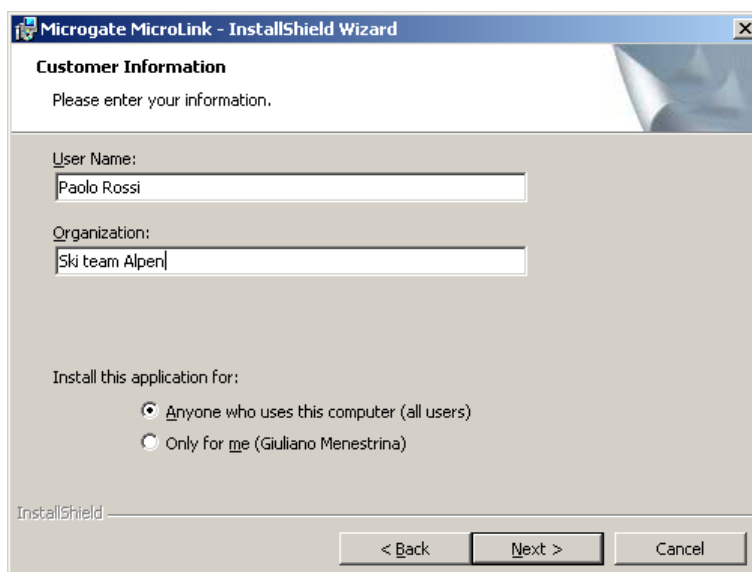


Figure 2 – Installation –data insertion

The next window summarizes the installation data. If all the data are correct, click on <Install>.

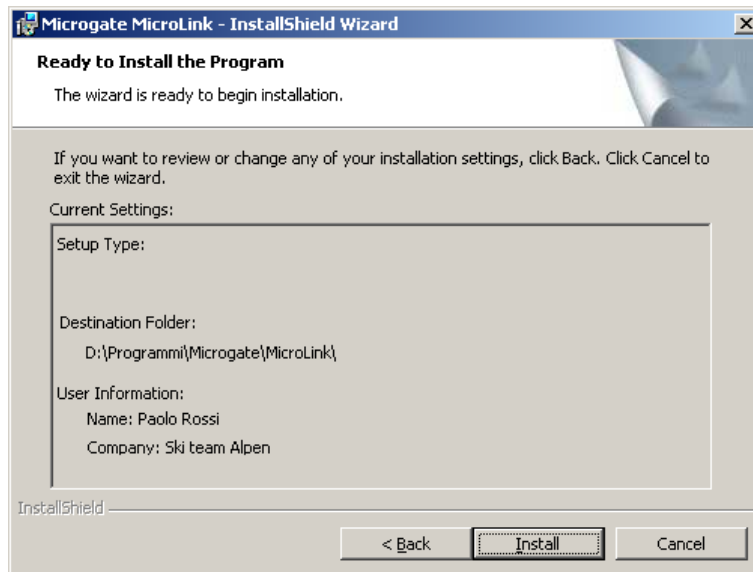


Figure 3 – Installation– data confirmation

InstallShield will install the product on the PC showing the status of progress of installation. When installation is completed, it is possible to read the latest updates in the release installed by selecting “Show the readme file”.

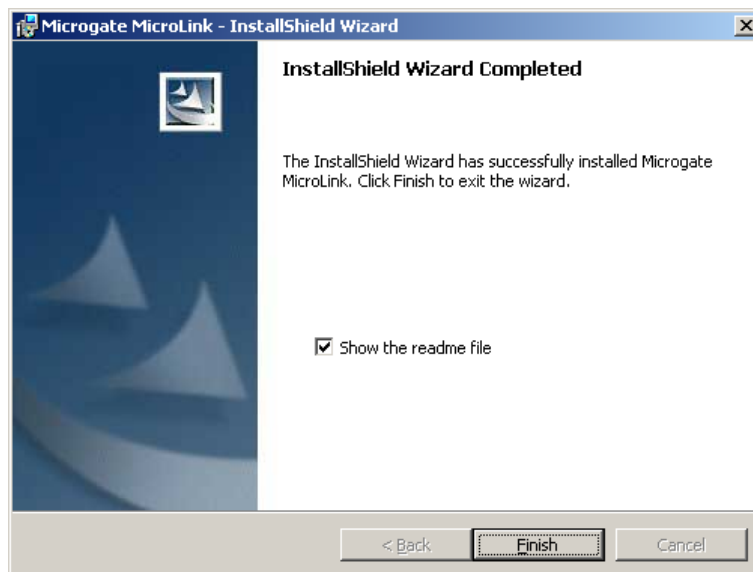


Figure 4 – Installation – completed

Click on the <Finish> button to exit installation.

During the whole installation procedure, it is possible to return to the previous window by clicking on the <Back> button.

2.1. Cancelling installation

If you want to cancel installation, click on the <Cancel> button and confirm by clicking on <Yes>.

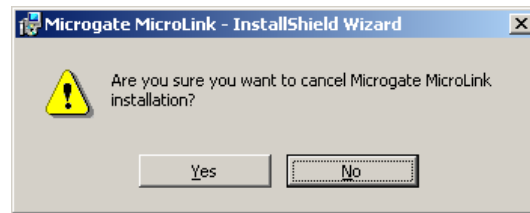


Figure 5 – Installation – cancellation

In the window confirming that installation has been cancelled, click on <Finish>.

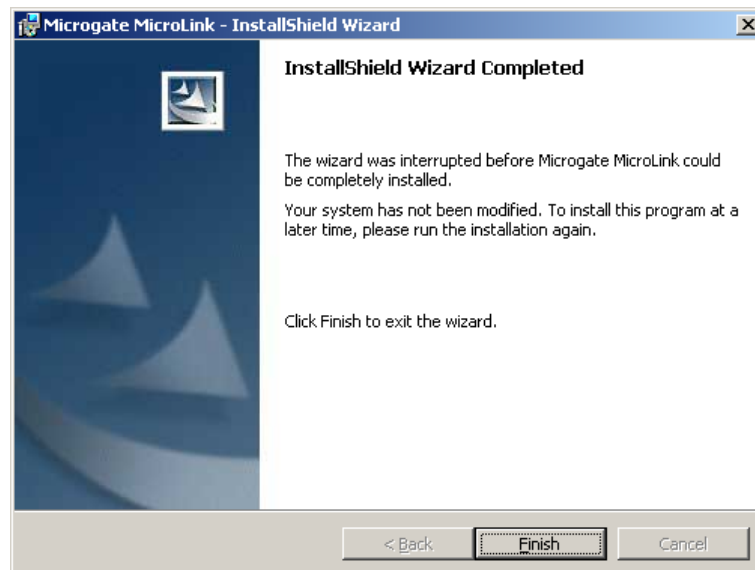


Figure 6 – Installation – annulled

3. Starting the program

The program should be started in the normal way for Windows. Usually it is installed in the menu Microgate – MicroLink.

3.1. Initial choice

When the program has been run, you are asked to select the type of stopwatch connected. The choices available are: Rei2 and Racetime2.

The choice between one type of stopwatch and the other is made by clicking on the triangle ▼ next to the stopwatch model. When you have selected the type of stopwatch, press the button <OK>.

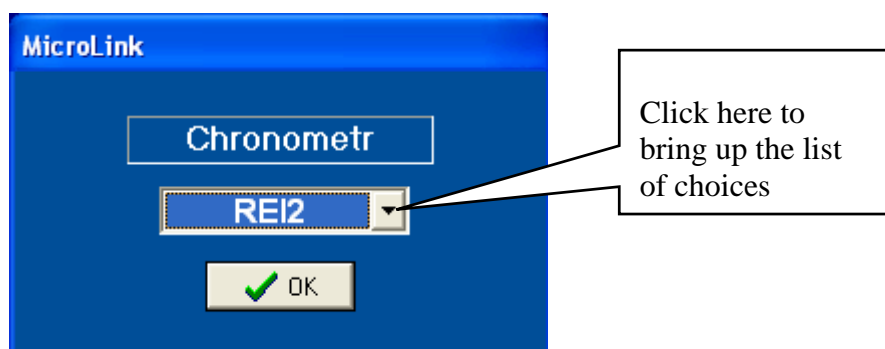


Figure 7 – Initial choice of stopwatch model

The choice of the type of stopwatch used is extremely important as it sets the communication mode between PC and stopwatch.

3.2. Communication parameters


The program automatically sets the communication parameters so they correspond to those activated by default on the stopwatch. To change the communication parameters select the commands Communication – Setting or press on the icon .



Figure 8 – Serial setting – connected status

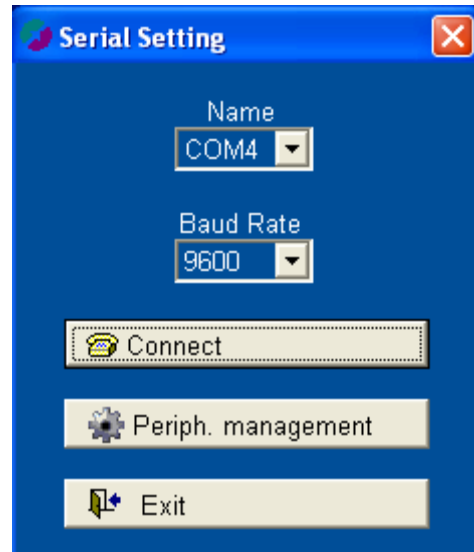


Figure 9 – Serial setting – not connected status

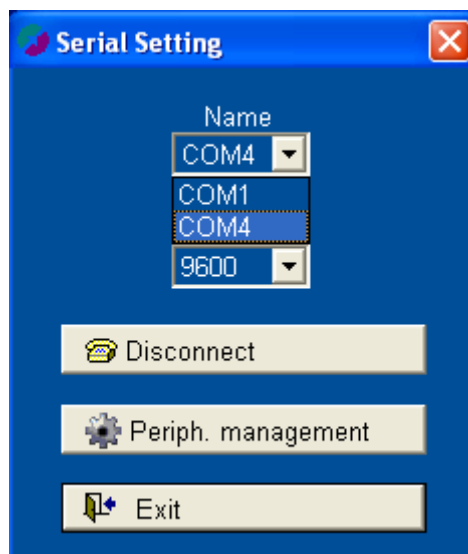




Figure 10 – Serial setting – choices

Click on the drop-down button ▼ next to each parameter to open the list of possible choices. Then select from the list the value required.

When the correct setting has been made, click on the word <Exit>  to save the setting.

To activate communication with the stopwatch click on the button < Connect > , to end communication click on < Disconnect >.

Clicking on the button < Peripheral management >  opens the Windows menu for management of peripherals. In this menu it is possible to modify the name of the serials installed.


If when using a USB/Serial adaptor you do not manage to connect the peripheral, you should disconnect the cable, reconnect it, select the correct COM and lastly try to reconnect.

4. Practical example

The MicroLink program can be easily used to manage a race or to check and compare training times. In race mode all the competitors are entered in the ranking on the basis of their total time while in training the competitors are entered only once in the ranking on the basis of their bib number.

So the two modes differ only in the display and printing of rankings while their general use is identical.

Below the creation of a race will be described step by step with the management of start lists, rankings and printouts. For further details about the program, refer to the sections which follow.

Create a new race by clicking on the icon  (or in the menu File – Race – New). Next enter the name of the race (e.g.: “Race Trial”). If there is a previous race in the memory, the request “Keep last race setting?” will appear. In this case click on “No” to continue with the default settings. This brings up the results table like the one shown in Figure 11.

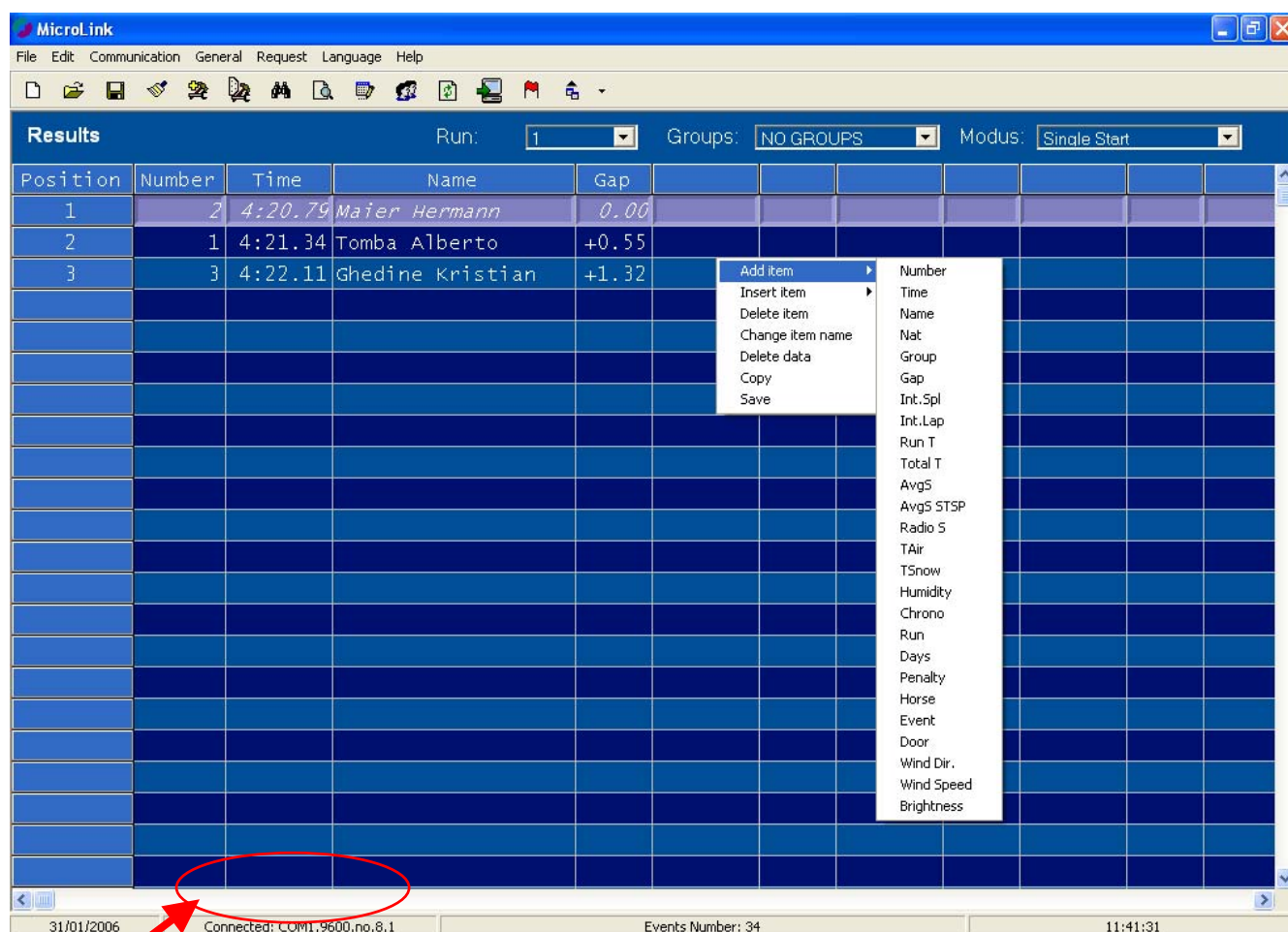




Figure 11 – Example of ranking

At this point it is possible to check the settings of the serial by clicking on the icon  as described in the previous section and to check also that the cable is correctly connected to the stopwatch (for

Rei2 connect it to the “Computer A” output of the stopwatch). At the bottom left of the program window the word “Connected” should appear (see Figure 11). The connection parameters are set automatically when the type of stopwatch you want to use is chosen.

A start list can now be created for downloading onto the stopwatch. Start lists, groups, names of participants and requests for times can only be sent to the stopwatch if the Rei2 stopwatch is used.

Click on the icon  (or in the Edit menu – Start List). Go to the top left corner of the table grid and enter the number “1”. Then go to the second column and enter the name “Tomba”. Continue name insertion as in Figure 12.

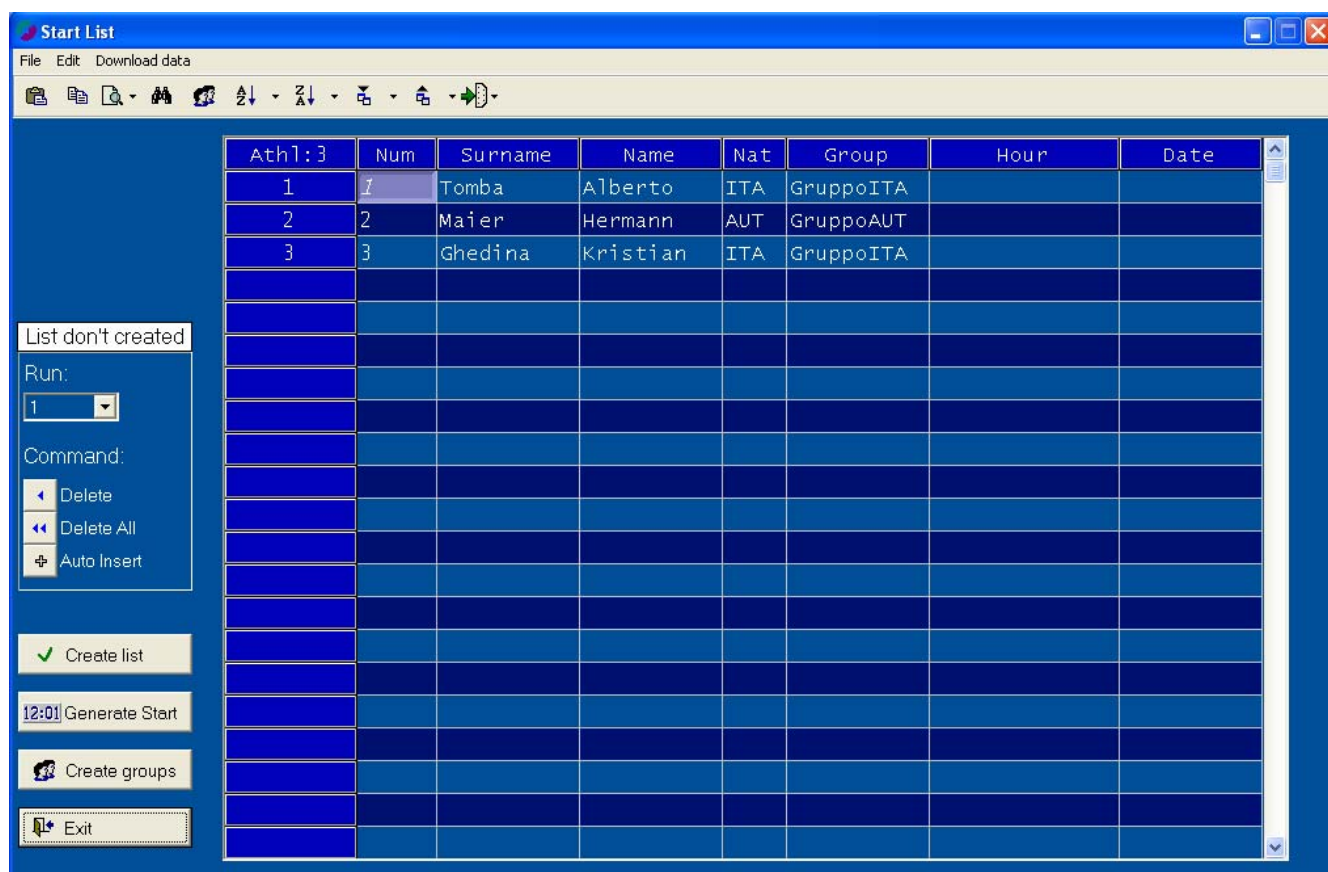




Figure 12: Example of start list

Then press the button “Create list” . A message will appear confirming that the data have been correctly entered. If the information is wrong or incomplete, MicroLink will point out the anomaly.

To create the groups automatically, press the button “Create groups” .

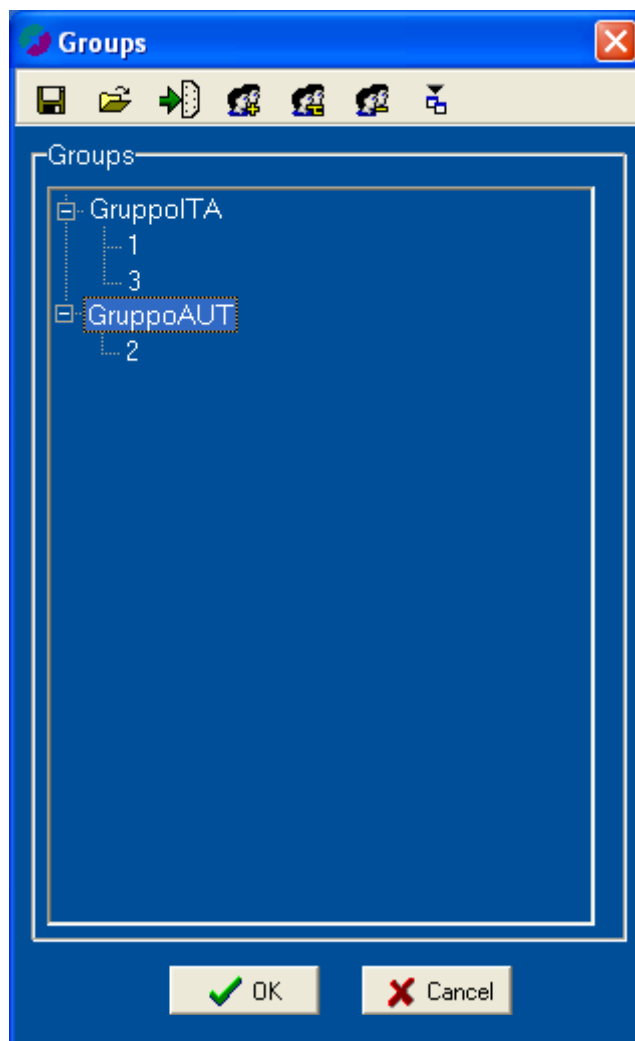


Figure 13 – Example of Groups


MicroLink will create the groups according to the data entered in the start list as in Figure 13. Press the button “OK” ✓ to return to the Start List menu.

If the Rei2 stopwatch is used, the list can be sent to the stopwatch by pressing the arrow to the right of the icon ➡ (or by going to the menu “Download data”) and selecting the items “Competitor List”, “Start List” and “Groups”. If the stopwatch is set correctly the data will be uploaded to the stopwatch (see for example “Data upload from PC” in the “Single Starts” manual). To return to the results table press “Exit” ↩.



Now it is possible to have a race on the stopwatch and to start the three competitors entered, making them pass the first intermediate station and then making them arrive at the finish.

If Rei2 is used the data are transmitted online during the race or can be downloaded offline at the end of the race (see for example “Download data to PC” in the “Single Starts” manual).

If Racetime2 is used, at the end of the race you must go to the menu Download data to PC (see chap. 9 “Offline data transmission” in the “User Manual”).



The results table fills up with the data coming from the stopwatch. During data download a window with a clock  should appear on the PC monitor. If it does not, check the connection between the program and the stopwatch.

To extend the table grid you can simply add columns by pressing the right mouse button on the grid. In the menu “Add item” select the item “Name” and then the item “Gap”. In this way you will obtain the table shown in Figure 11.

To print the general ranking press the icon  (or in the menu File – Print – Results). Now select the first group “GruppoITA” by pressing on the box next to the word “Groups:” and scroll the options until you reach the correct item. The ranking is recreated for just GruppoITA. Now press the icon  again to print the group ranking.

Create the second run on the stopwatch by carrying out the same operations performed for the first run. In this case, in the menu “Start List” select “Run:” “2” before uploading the data to the stopwatch.

To view the times of the general ranking with the total of the times of the first and second run select “2” next to the word “Run:” and “NO GROUPS” next to the word “Groups:”.

To view only the run times press the icon  (or in the menu General – Settings) and set the item “View” on “Run” and then exit the menu by pressing the button “OK” . To return to viewing of total times, repeat the previous operation and set “View” to “Total”.

5. Menu description

Having completed the practical example we will examine the various fields of the program in greater detail.


5.1. Select race

To be able to use the program it is necessary to create a new race or to open a previously stored race.

5.1.1. Create new race

To create a new race, use the commands File – Race - New or press the icon .

5.1.2. Open stored race

To call up a race already stored use the commands File – Race - Explore or press the icon . This opens a new window inside which information about stored races appears and several operational possibilities are offered.

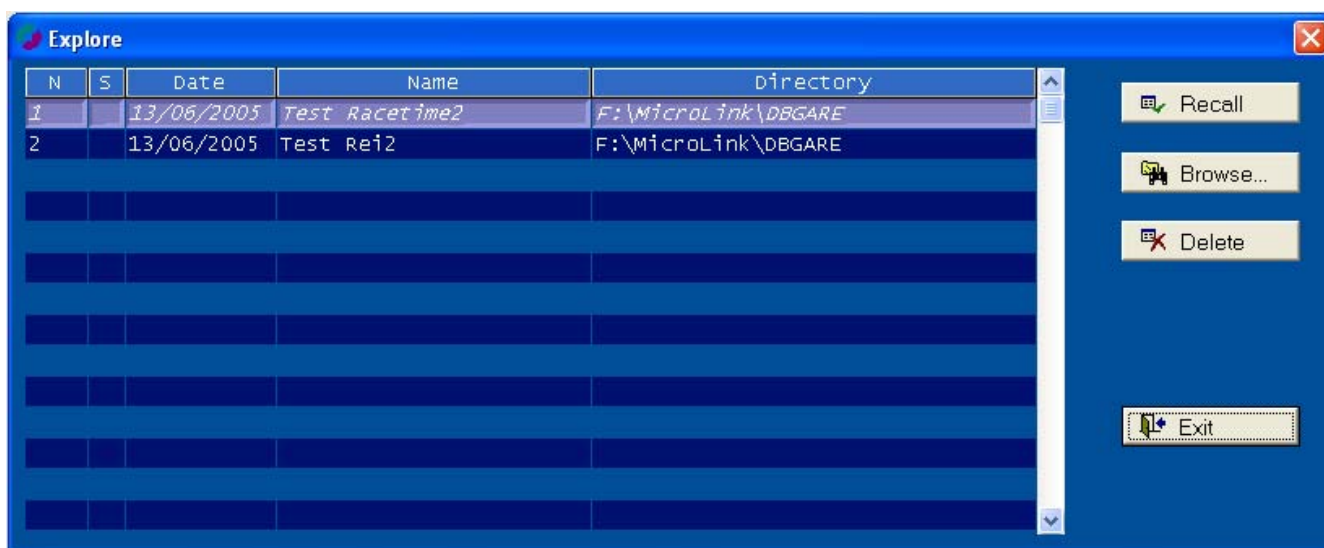


Figure 14 – Stored race search


To activate the selected race click on the corresponding line and click on <Call up> or just double click on the corresponding line. In answer to the request “Sure?” click on <Yes>.

If the list does not contain any races or does not contain the desired race, you can search for it from ‘My Computer’ by clicking on the button <Browse>. This button opens a window in which it is possible to search for the directory where the race you are looking for is stored.

When requested, the button <Delete> cancels the selected race from the disc.

The button <Exit> allows you to close the window and return to the main window.

5.2. General Settings

This function, which can be called up from the menu General – Settings (or by pressing the icon ) , allows you to make some settings of a general nature.

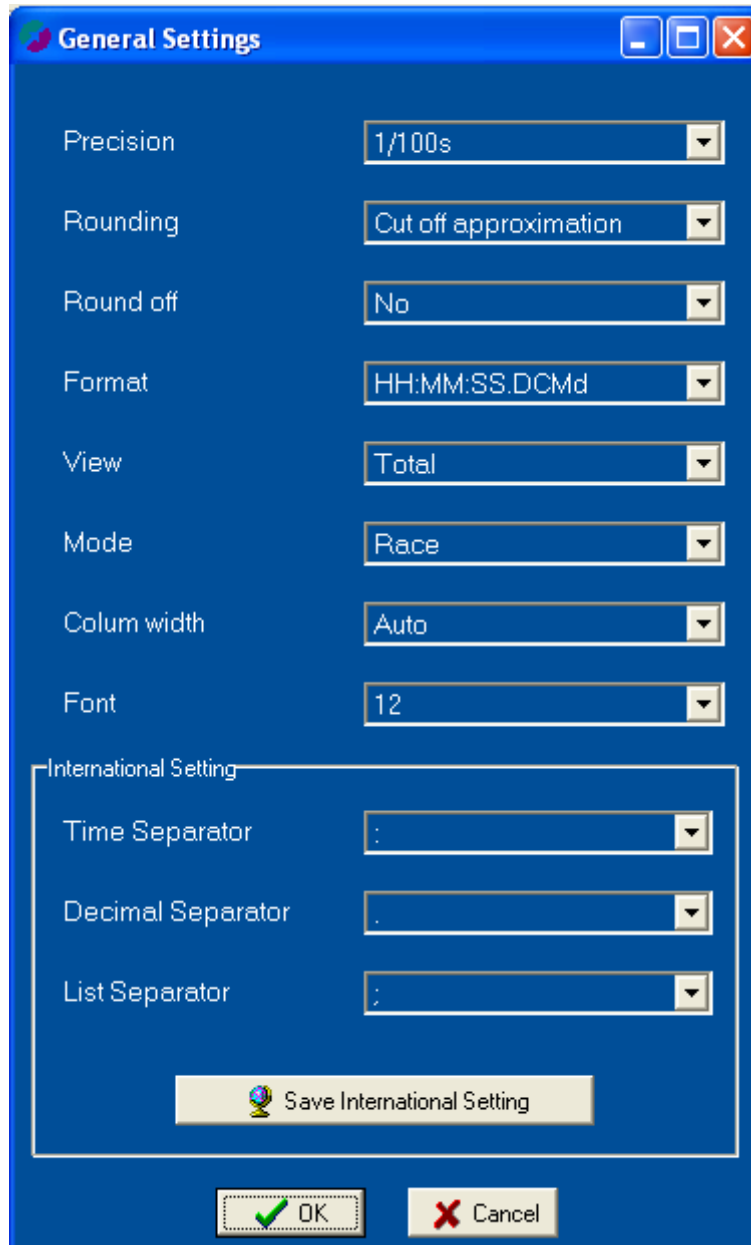



Figure 15 – General settings

The settable values are divided into two main parts: those for the timing session and those for the PC's international configurations.

Particular attention should be taken to select the correct values for the precision of the data read, the need or otherwise to round off, the format for viewing of the time and the modes of totalization.

If the button < Save International Setting>  is pressed, the choices made are stored also for the next time the computer is started.

5.3. General settings– retrieval from another race

It is possible to retrieve the setting used in another race by means of the menu item General – Import setting .

5.4. Set report

This function makes it possible to insert a heading in the printouts.

5.5. Ranking mode

MicroLink displays the athlete's data only after the competitor has finished. Five ways of displaying the results are possible:

- **Single Start:** to display the result of a single athlete, MicroLink needs at least a start and finish time or a net time.
- **Groups Start:** to display the result of a single athlete, MicroLink needs at least the group's start time and the competitor's finish time, or a net time. The competitor must belong to at least one group.
- **Show Jumping:** as for Single Start mode, but in the Start List also the name of the horse can be entered.
- **PC-Online:** every event is displayed.
- **Simple stopwatch** (only for Racetime2): as the Basic Stopwatch program does not have a stop, MicroLink manages the last lap received as the stop.

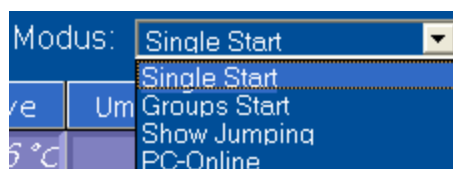


Figure 16 – Ranking mode

5.6. Run

MicroLink manages up to 250 runs. To obtain the ranking for the run required, click on the triangle ▼ next to <Run>.

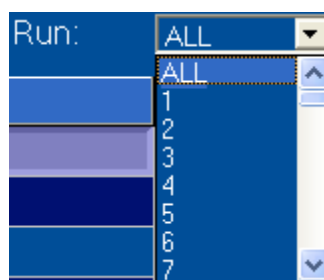


Figure 17 – Run

If <ALL> is selected, MicroLink considers all the runs selected when it displays the ranking. This function is suitable if you wish to compare two or more runs by athletes. In this case you are recommended to select the view <Run> in <General Settings> (see chap. 5.2 General Settings on p.17). Selecting "BY RUN" draws up the ranking for each run. Selecting "BY ATHLETE" draws up the ranking for each athlete.

5.7. Groups

If groups are inserted, MicroLink displays the choice <Groups>. By clicking on the triangle next to <Groups> you can choose from:

- **NO GROUPS:** no filter by group is applied.
- **FOR GROUPS:** the ranking is determined by appending the ranking of each group starting from the first group inserted.
- **GROUP NAME:** the ranking is determined by filtering out the chosen group.



Figure 18 – Groups

5.8. Start List

To manage the Start List use the commands Edit – Start List or press the icon .

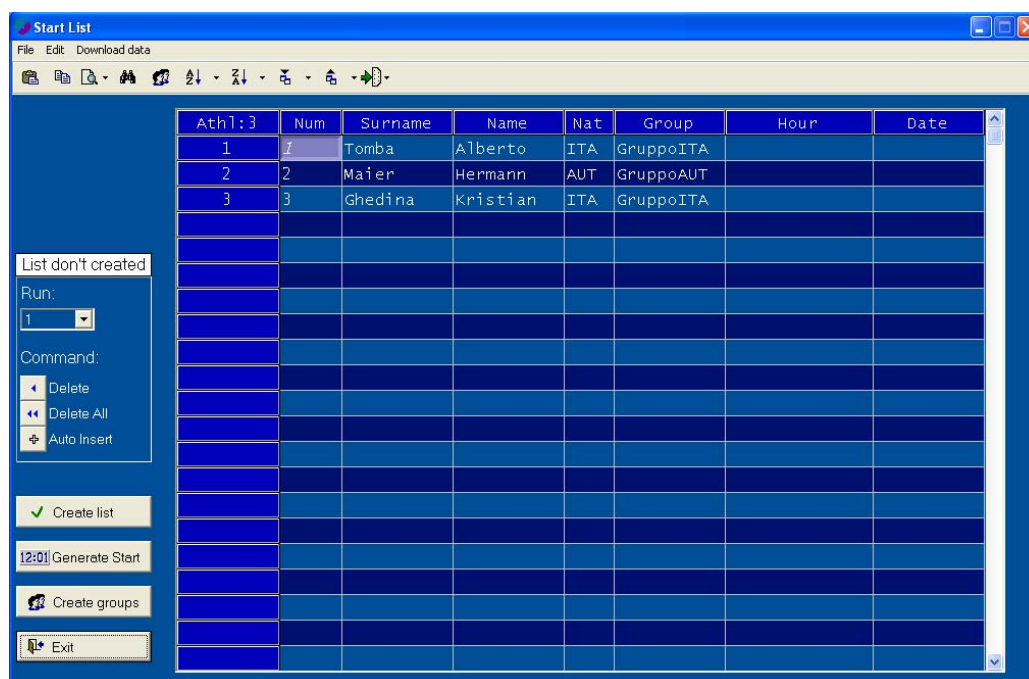




Figure 19 – Start List


Displayed in the table showing the start list are: progressive number, bib number, surname, name, nation, start time, start date. If the Equestrian sports mode has been selected, (see chap. 5.5 Ranking mode on p.18) the horse's name can also be entered.


To enter a new competitor, click on the first empty cell in the number column, enter the number and press the key <Enter> or <Tab>. Then enter the other data available.

To cancel a competitor, select the corresponding line and click on the button <Delete> . To cancel all the data entered click on the button <Delete All> .


The choice of run to work on is made by selecting it from the list "Run".

The button <Exit>  allows you to exit this window.

The button <Generate Start>  automatically generates the starts so MicroLink waits to receive only the stopwatch stop events to calculate net times. This function is suitable in cases where the starts are automatic and a stopwatch is placed at the finish (for example, with the PC-Online program) which takes only stop events (e.g. cycling stopwatch).

The button <Create Groups>  automatically generates groups according to the choices made in the table of participants. In the example in Figure 19 the competitors Tomba and Maier are inserted in group 1 while the competitor Ghedina is inserted in group 2.

5.8.1. Create list

To be able to transmit data to the stopwatch, print data and generate starts or groups, it is necessary to create the lists by clicking on the button <Create list> . The end of processing is indicated by the message:

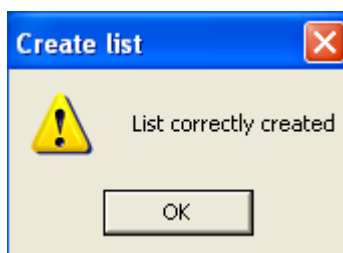



Figure 20 – List created

5.8.2. Auto Insert

It is possible to enter the bib numbers and start times automatically by clicking on the button <Auto Insert>  to call up the following window:

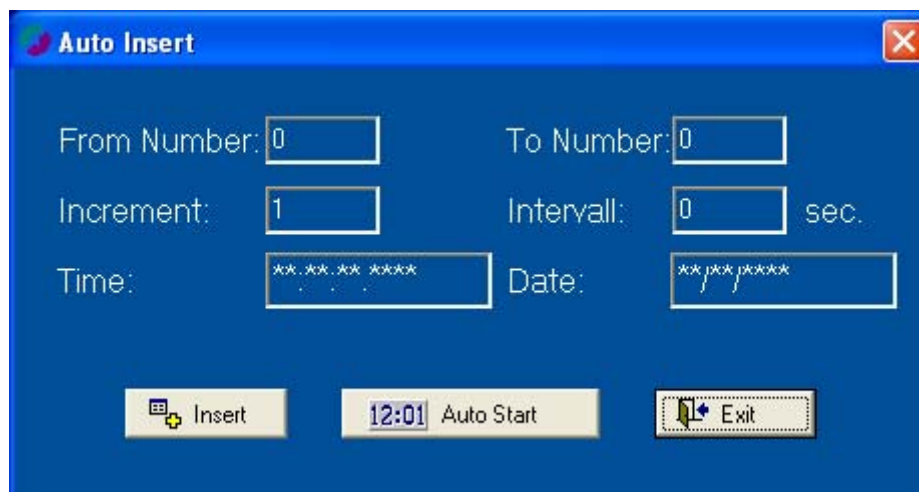





Figure 21 – Auto Insert

To add only the bib number in the start list, you must enter the values in the boxes “From Number”, “To Number”, “Increment” and then click on the button <Insert> .

To add also the start time to the lists, you must also enter the data in the boxes “Interval”, “Time” and “Date” and click on the button <Auto Start> .

5.8.3. Importing data

It is possible to import Competitor lists and Start Lists produced with other programs. To use this function call up the menu File – Import or press the triangle ▼ to the right of the symbol  and select one of the formats supported: Excel, Text, Race, CSV . The classical Windows window is opened to allow you to choose the file to be opened.

Attention: the format of the columns of an Excel or CSV file must be the same as in the table of the start list of the MicroLink program. Moreover it is necessary to make sure that international configurations (list separator, time and decimals) are compatible with the file to be imported.

MicroLink also supports the FISE Excel format. To import it, it is necessary to remove empty lines or lines containing headings and also the first columns if these are empty or contain ticks.

At the end of the operation the data read are displayed in the window.

5.8.4. Exporting data

To export data to other formats select the menu File – Export and select one of the formats supported: Microgate, Excel , Text, CSV , DBF .

The classical Windows window is opened to allow you to choose the file to be created. During processing a window appears with the words “Wait please...” together with a bar indicating the state of progress of the operation.

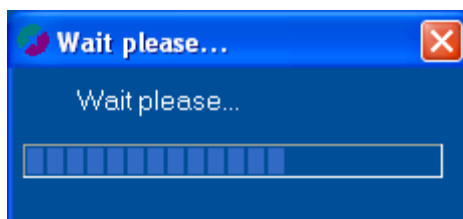


Figure 22 – Operation in progress

The option of exporting into Microgate format makes it possible to create text files to be sent to the stopwatch by using any terminal emulator. Through this system the following data can be generated “Competitor List” , “Start List” , “Auto Start” and “Groups” .

5.8.5. Edit

The menu “Edit” contains the functions “Copy” , “Paste” and “Find” .

The copy functions make it possible to select a piece of data in the list, copy it and paste it in a new cell.

The “Find” function calls up the search window.



Figure 23 – Search window

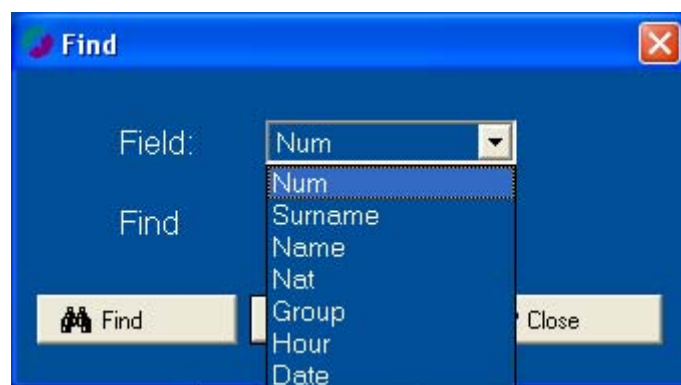







Figure 24 – Search window – search fields

It is possible to search for a competitor by means of any piece of data pertaining to him/her such as: name, surname, nation, etc. The button <Find>  activates the search for the competitor by means of the data set. The button <Next>  allows you to search for the next competitor with the same data. To end your search, click on the button <Close> .

5.8.6. Print Start List

To get the printout of the start order, select File – Print – Start List (available in both the main window and the “Start List” window) or, in the “Start List” window click on the triangle ▼ next to the symbol  and select the printout “general” or “for groups”.

5.8.7. Download data (Only for REI2)

By selecting the menu Download data or pressing on the triangle ▼ to the right of the symbol  it is possible to activate the transmission of loaded data to the stopwatch. If Rei2 is correctly set the data will be uploaded to the stopwatch. (See, for example, “Upload data from PC” in the manual “Single Starts”).

The data which can be transmitted are: “Competitor List” , “Start List” , Auto Start” and “Groups”.

The state of progress of the operation is shown in the wait window.

5.8.8. Other functions

Several shortcuts and extra functions can be found in the icon bar.

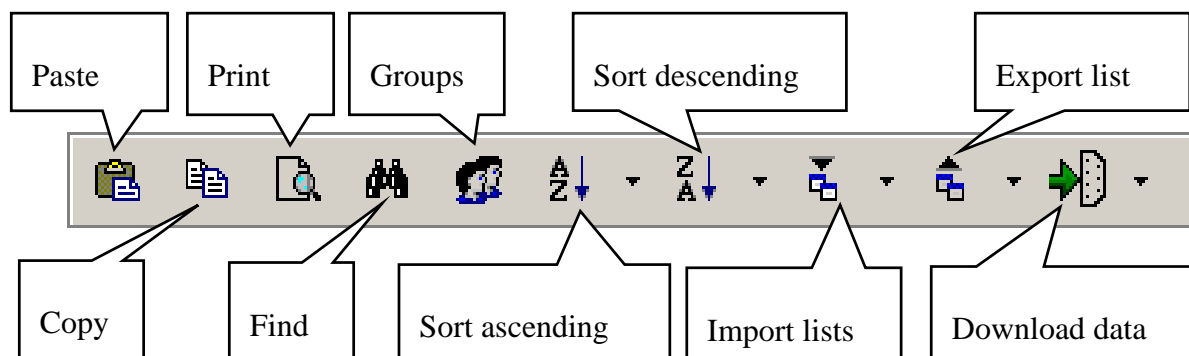


Figure 25 –Start List Icon bar

Some menus are only activated by clicking with the mouse on the down arrow to the right of the icon.

The orientation functions make it possible to select the column in which to make the main order and in which column to make a second order if the same data is used.

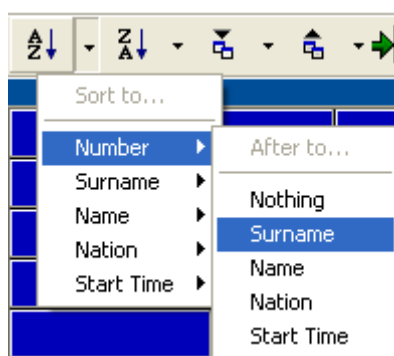


Figure 26 – Ordering choices

When the choice has been made, the data will be immediately displayed in the desired order.

The table of Start Lists can also be ordered simply by double-clicking with the mouse on the heading of the column to be ordered.

5.8.9. Group Management

To manage groups, use the commands Edit – Groups.

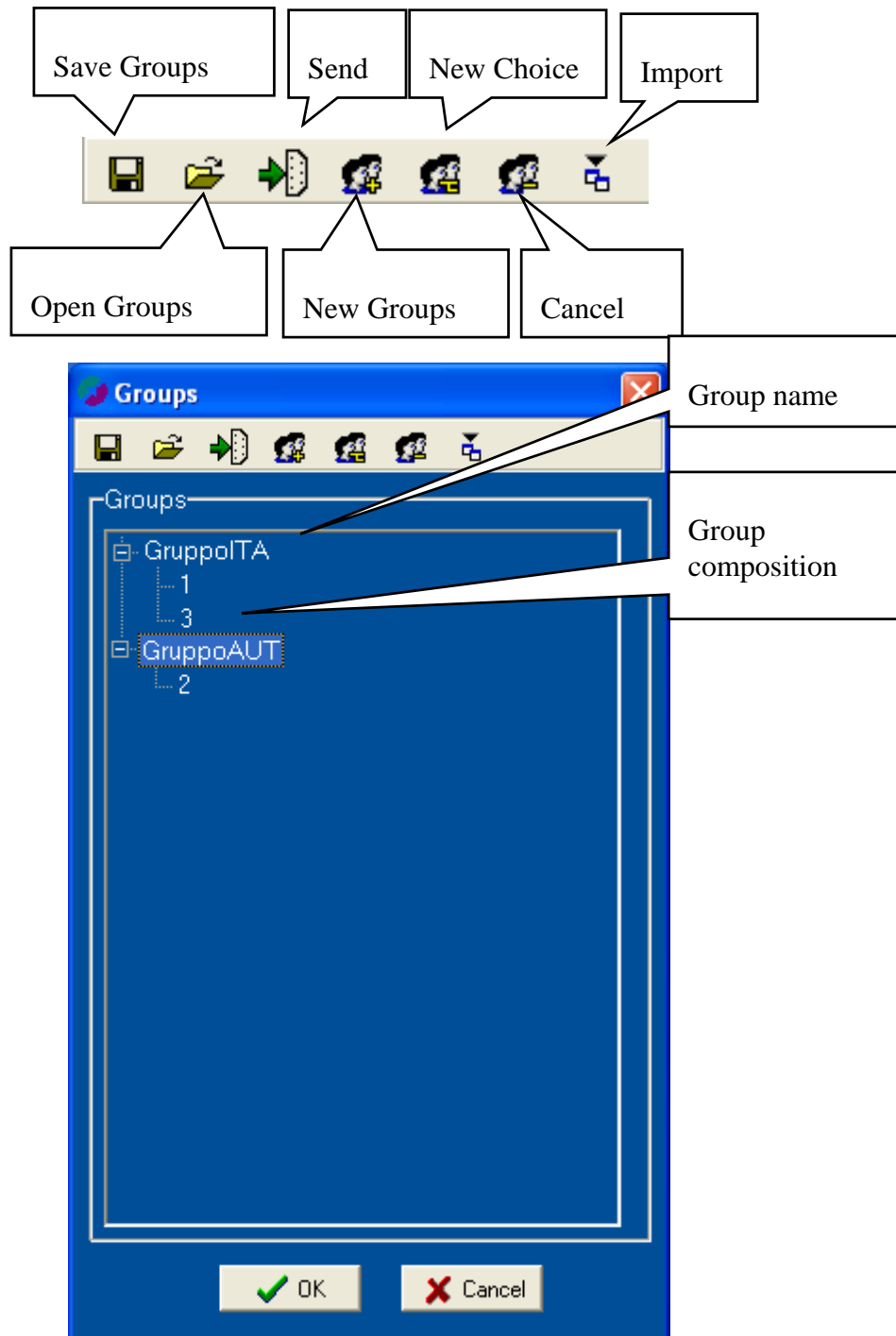


Figure 27 – Group composition window

The number of groups that can be managed by the stopwatch depends on the model of stopwatch and the setting made on it.


Each group can contain various subgroups.

To create a group click on the icon < New Groups > and enter the number of the first and last member of the group separated by the symbol “-“. You can also enter one number only without adding the symbol “-“. If group numbering is broken up, click on the icon < New Choice > to enter the next number(s).

As the groups are created, they appear in the list. To see their composition click on the symbol “+” next to the group number.

Any variations can be made by clicking on the detail you want to modify or pressing <F2> and entering the new values.

5.9. Run choice

This function makes it possible to select the runs that are active for the race being managed and can be accessed from the menu Edit – Run choice .

In the window that is opened by calling up the function, tick the runs you are interested in.

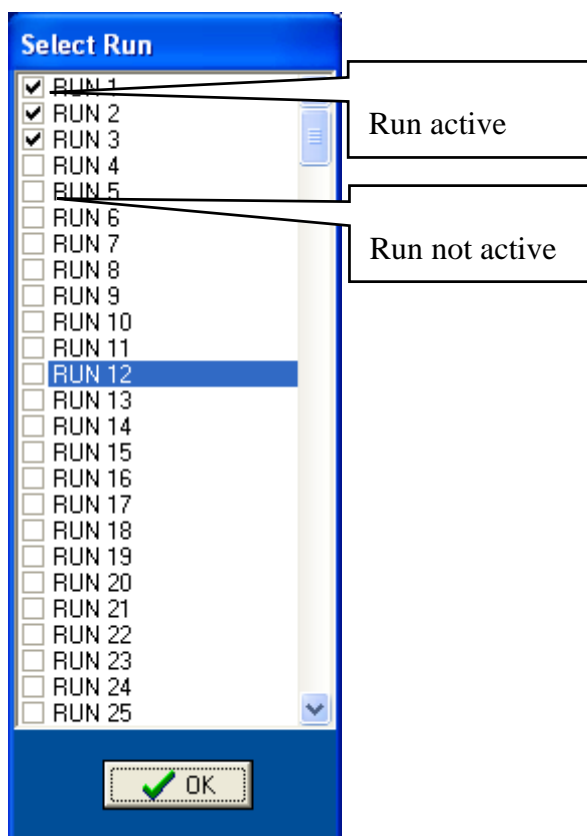




Figure 28 –Run choice window


Click on the button <OK>  when you have finished.

5.10. Penalty

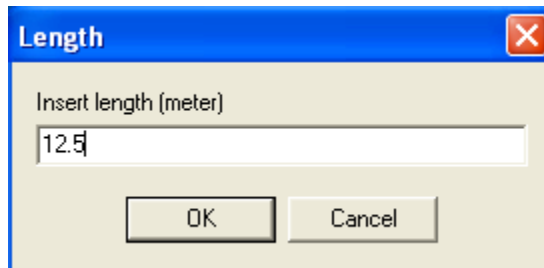
Door N.	Penalty
#1	0
#2	0
#3	0
#4	0
#5	0
#6	0
#7	0
#8	0
#9	0
#10	0
#11	0
#12	0
#13	0
#14	0
#15	0
#16	0
#17	0
#18	0
#19	0
#20	0

Figure 29 –Penalty window

This function makes it possible to set penalties for each competitor. To access it, press the button  or go to Edit – Penalty.


Suitable for canoe races, it can be used in races in which there is a penalty at each gate which is added in seconds to the total time. To select the competitor the penalty is to be given to, just enter the correct values in the boxes “Number” and “Run”. When <OK>  is pressed, the penalties are assigned to the competitor.

5.11. Start-Stop length

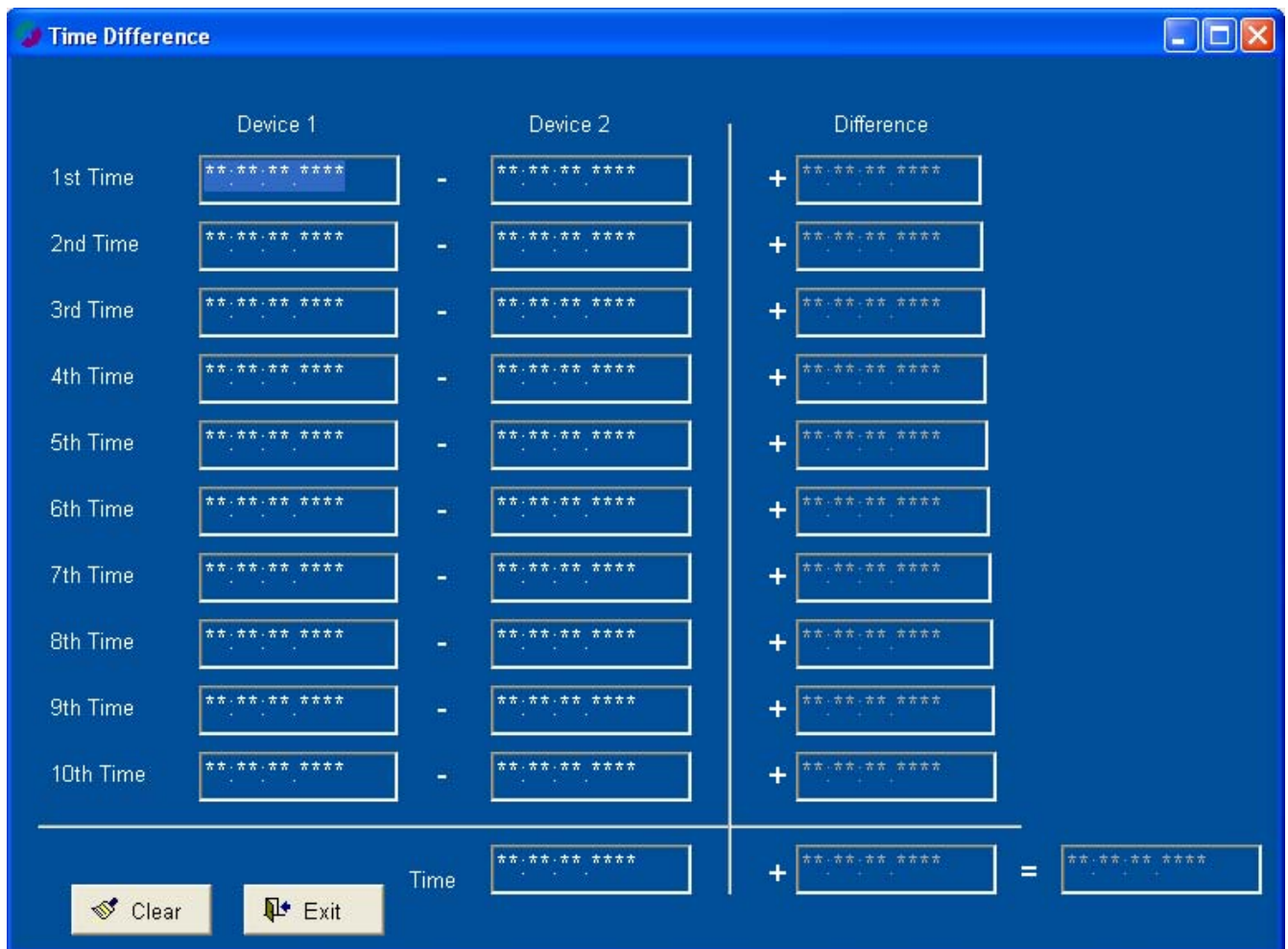


A dialog box titled "Length" with a red close button. It contains a text input field labeled "Insert length (meter)" with the value "12.5" entered. Below the input field are "OK" and "Cancel" buttons.

Figure 30 – Course length window

With this function you can manually enter the distance between the start and the stop. To access it, select from the menu Edit – Length Start-Stop . If the stopwatch does not give the speed, MicroLink will calculate it on the basis of the competitor's time and the distance entered. It is suitable for programs like PC-Online in which you are not allowed to enter a distance.

5.12. Time difference



A window titled "Time Difference" with a blue background. It contains a table for recording times for two devices and calculating their difference.

	Device 1		Device 2		Difference
1st Time	**-**-**-**	-	**-**-**-**	+	**-**-**-**-**
2nd Time	**-**-**-**	-	**-**-**-**	+	**-**-**-**-**
3rd Time	**-**-**-**	-	**-**-**-**	+	**-**-**-**-**
4th Time	**-**-**-**	-	**-**-**-**	+	**-**-**-**-**
5th Time	**-**-**-**	-	**-**-**-**	+	**-**-**-**-**
6th Time	**-**-**-**	-	**-**-**-**	+	**-**-**-**-**
7th Time	**-**-**-**	-	**-**-**-**	+	**-**-**-**-**
8th Time	**-**-**-**	-	**-**-**-**	+	**-**-**-**-**
9th Time	**-**-**-**	-	**-**-**-**	+	**-**-**-**-**
10th Time	**-**-**-**	-	**-**-**-**	+	**-**-**-**-**
	Time		Time	+	=
	--**-**		**-**-**-**		**-**-**-**-**

At the bottom left, there are two buttons: "Clear" (with a trash icon) and "Exit" (with a door icon).

Figure 31 – Time difference


This function makes it possible to make differences between times. When times are inserted in the columns Set 1 and Set 2, the result of the subtraction automatically appears in the column Difference. The sum of all the differences is at the bottom of the column Difference.

The button  <Clear> deletes all the data entered. Press <Exit>  to return to the main menu.


5.13. Language

This menu allows you to select the program language from the four available: Italian, English, French, German. All the menus, the headings of the fixed columns and icon meanings immediately appear in the selected language. However, columns inserted manually do not change.

5.14. MicroLink help

Calls up the online help functions. To access them select Help – MicroLink Help .

5.15. About

Calls up the initial program window giving the program version. To access it select Help – About .

5.16. Other functions

The following extra functions are available in the icon bar.



Clears the race deleting all data




Updates rankings



Saves the race on file

6. Data acquisition from stopwatch

If the stopwatch is correctly connected to the computer and the serial connection is active, the various data will be received and displayed in the table.

If Rei2 is used, the data are transmitted online during the race or it is possible to download them offline at the end of the race (see for example “Data download to PC” in the manual “Single starts”). It is also possible to retrieve data taken by the stopwatch (so without entering the Data download menu) by using the function Request – Data upload .

If Racetime2 is used, at the end of the race you must go to the menu Download data to PC (see chap. 9 “Offline data transmission” in the “User Manual”).

First of all you should check that all the values selected for Run, Groups and Modus correspond to the type of race set on the stopwatch.

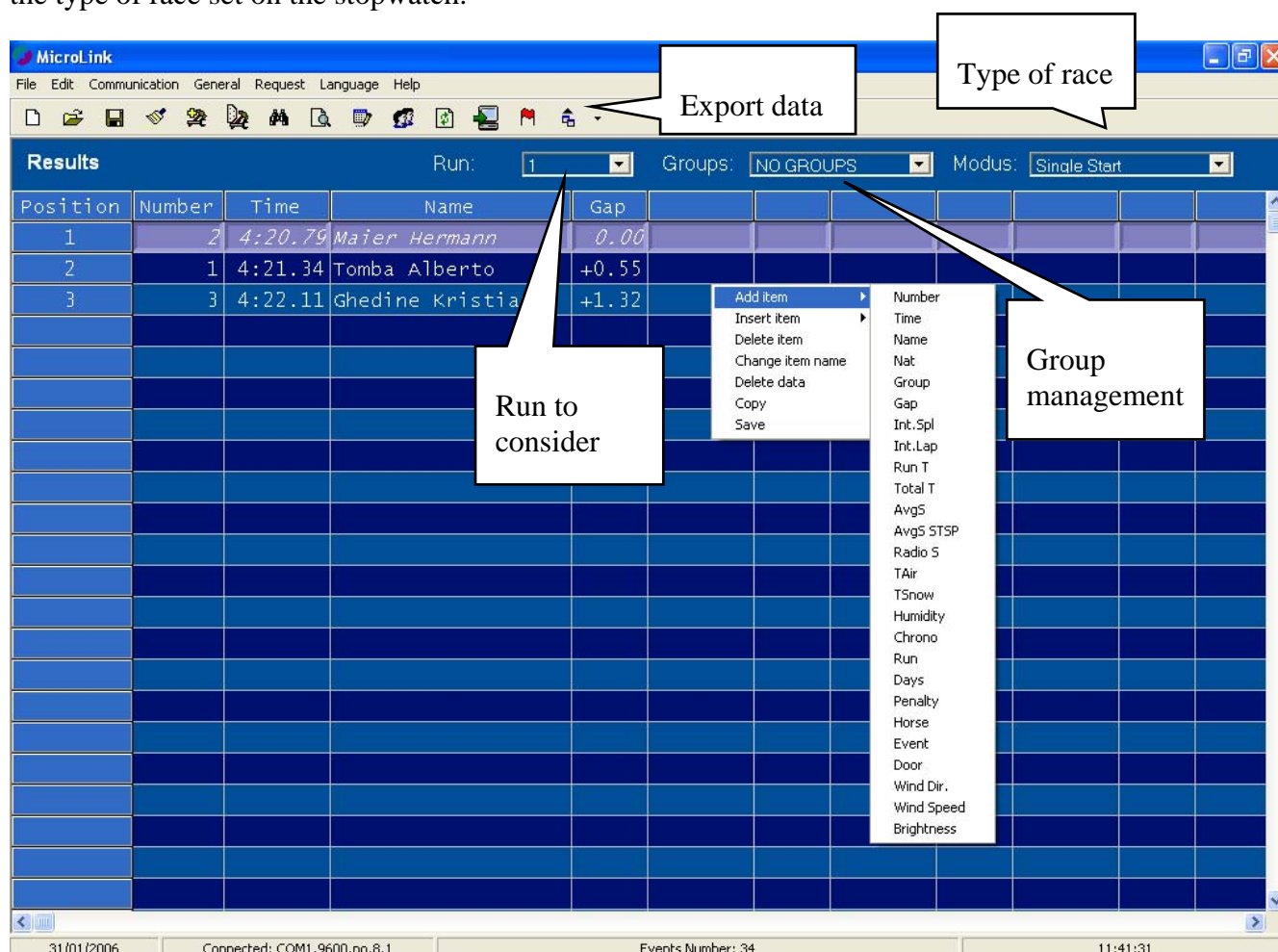
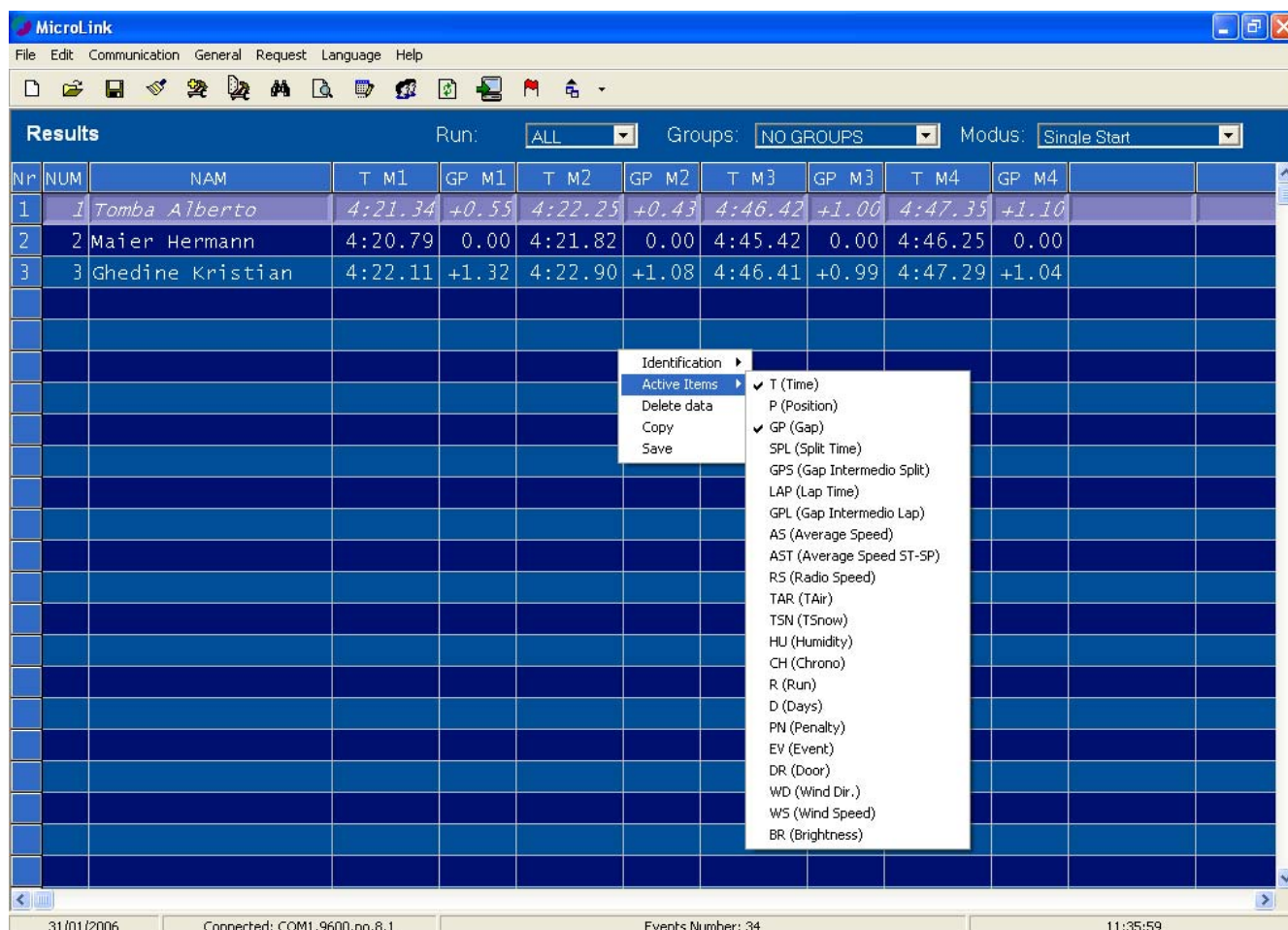


Figure 32 –Results window in Race mode

The data are inserted in the various cells as they are received and ordered according to time.

The first time the program is started the grid is configured so that the first column gives the position of the competitor, the second the bib number and the third the final time. These columns can be deleted.

It is also possible to order the table of rankings simply by double-clicking with the mouse on the heading of the column to be ordered.



Nr	NUM	NAM	T M1	GP M1	T M2	GP M2	T M3	GP M3	T M4	GP M4
1	1	Tomba Alberto	4:21.34	+0.55	4:22.25	+0.43	4:46.42	+1.00	4:47.35	+1.10
2	2	Maier Hermann	4:20.79	0.00	4:21.82	0.00	4:45.42	0.00	4:46.25	0.00
3	3	Ghedine Kristian	4:22.11	+1.32	4:22.90	+1.08	4:46.41	+0.99	4:47.29	+1.04

Figure 33 – Results window in Training mode

In training mode the competitors are entered according to their bib number. In the case of Figure 33 there are three athletes who have done four runs. Next to each run there is also the gap between the competitor and the first.

6.1. Items viewable in Race mode

By clicking with the right button of the mouse inside the table it is possible to select the data to be viewed. In the menu which appears, select the operation to carry out:

- **Add item:** adds the new item to the right of the last one displayed
- **Insert item:** inserts a column to the left of the one you have clicked on
- **Delete item:** deletes the column you have clicked on
- **Change item name:** allows you to change the heading
- **Delete data:** deletes the time of the selected competitor

- **Not arrived:** announces that the athlete has not finished
- **Copy:** copies the selected data
- **Save:** exports the data displayed in text format.
- **Note:** it is possible to insert a note for the competitor selected
- The operations < Add item > and < Insert item > make it possible to select the type of data to be displayed. <Add item> adds the item chosen next to the last column used, while < Insert item > inserts the item to the left of the selected column. For some choices, such as Int.Split; Chrono, Speed (S) you are asked which channel you want to view.

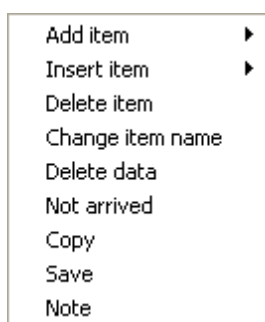


Figure 34 – Results window– operations

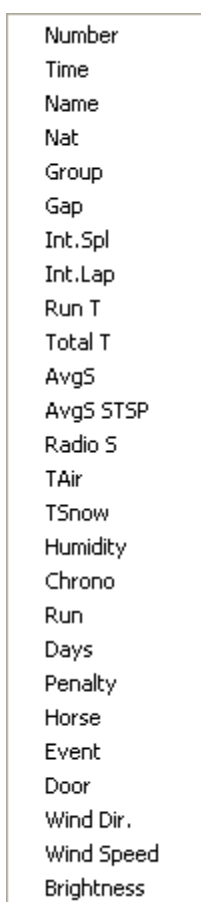


Figure 35 – Results window – items choice

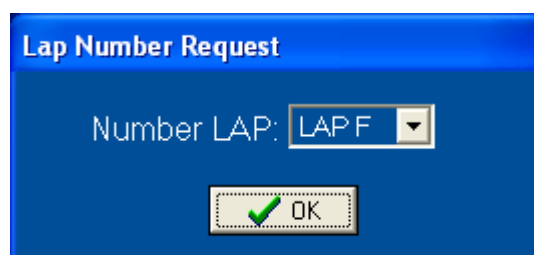


Figure 36 – Results window – logical channel choice

6.2. Items viewable in Training mode

By clicking with the right button of the mouse inside the table it is possible to select the data to be viewed. In the menu which appears, select the operation to carry out:

- **Active items:** inserts in the grid the heading selected

- **Delete data:** deletes the time of the competitor selected
- **Not arrived:** announces that the athlete has not finished
- **Copy:** copies the data selected
- **Save:** exports in text format the data displayed.
- **Note:** it is possible to insert a note for the competitor selected

The operations < Active Items > make it possible to select the type of data to be displayed. For some choices, such as Int.Split; Chrono, Speed (S) you are asked which channel you want to view. The name of the item can be changed by pressing the button <Mod.>.

Active Items
Delete data
Not arrived
Copy
Save
Note

Figure 37 – Results window–
operations

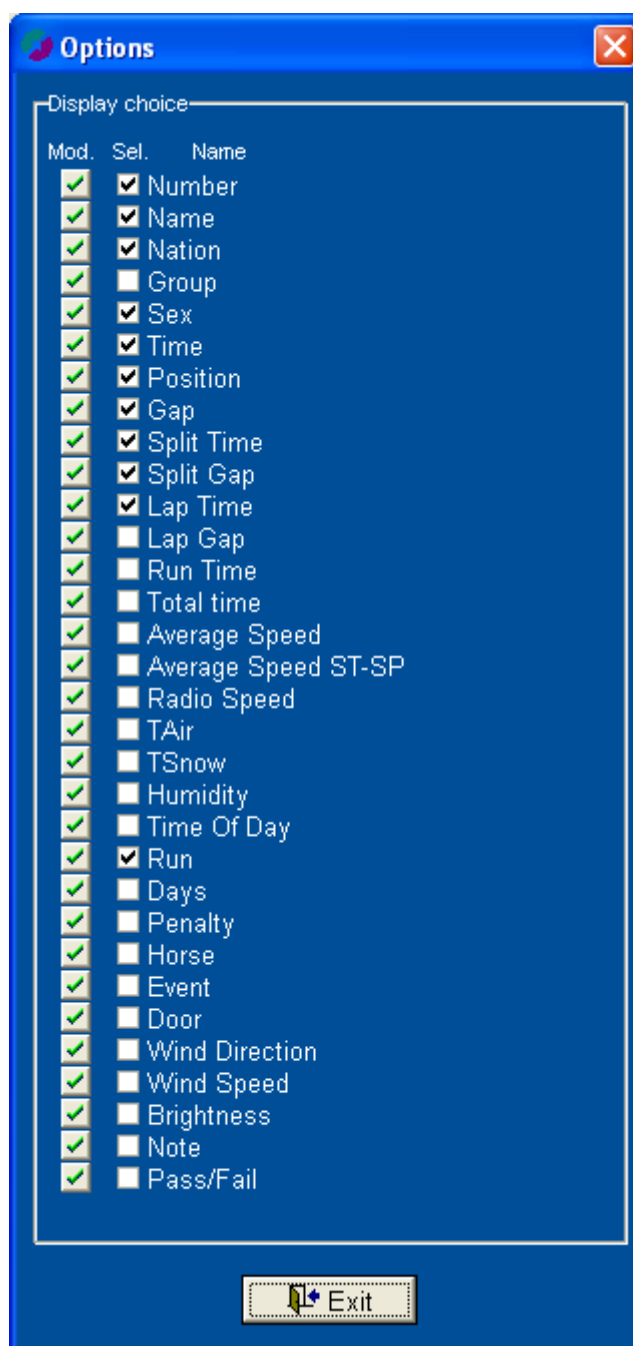




Figure 38 – Results window –Active items

6.3. Printing rankings

To obtain a printout of the rankings select File – Print – Results or click on the icon . The data displayed in the results grid are displayed in preview for printing on paper.

7. Exporting data

By clicking on the triangle ▼ next to the icon Export  or in the menu File – Export, the function of export of the data recorded in the results grid is activated in a format which can be read by other programs. The export formats supported are: Excel, Text and CSV.

8. Menu

8.1. General menu

- | | |
|--|---|
| <ul style="list-style-type: none"> • File <ul style="list-style-type: none"> ○ Race <ul style="list-style-type: none"> ▪ New ▪ Explore ▪ Save ▪ Close ▪ Clear ○ Export <ul style="list-style-type: none"> ▪ Excel ▪ Text ▪ Cvs ○ Print <ul style="list-style-type: none"> ▪ Results ▪ Start List ○ Exit • Edit <ul style="list-style-type: none"> ○ Groups ○ Start List ○ Run choice ○ Length Start-Stop ○ Penalty ○ Copy ○ Select all | <ul style="list-style-type: none"> ○ Find • Communication <ul style="list-style-type: none"> ○ Setting • General <ul style="list-style-type: none"> ○ Setting ○ Import setting ○ Set report • Request <ul style="list-style-type: none"> ○ Data upload • Language <ul style="list-style-type: none"> ○ Italian ○ English ○ German ○ French • Help <ul style="list-style-type: none"> ○ MicroLink help ○ About |
|--|---|

8.2. Start List Menu

- File
 - Export
 - Microgate
 - Competitor List
 - Start List
 - Auto Start
 - Groups
 - Excel
 - Text
 - CSV
 - DBF
 - Import
 - Excel
 - Text
 - Race
 - CSV

- Print
 - Start List
 - General
 - For groups
- Edit
 - Copy
 - Paste
 - Find
- Download data
 - Competitor List
 - Start List
 - Auto Start
 - Groups

9. Modification history

The following table summarizes the main modifications made to this document.

Program version	Chapter	Page	Editing description
1.0.9.2			First version of this manual.
1.1.1.1			Update to version 1.1.1.1
1.1.3.4			Set report added on p.18
1.1.5.1	5.6	18	Addition of ranking "BY RUN" and "BY ATHLETE"

Copyright

Copyright © 1999, 2005 by Microgate s.r.l.

All rights reserved

No part of this document or of any of the individual manuals may be copied or reproduced without previously making a written application to Microgate s.r.l. for authorisation.

All the marks or names of products mentioned in this document or in the individual manuals are or may be registered marks belonging to the individual firms.

Microgate, REI2, REI, RaceTime, MicroTab, µTab, MicroGraph, µGraph, MicroBeep, µBeep, Uploader, Microrun, MicroLink, µFlasher, LinkPod, LinkGate, LinkGate encoder, LinkGate decoder, EncRadio, DecRadio, Polifemo, MicroSem, µSem, are registered marks of Microgate s.r.l. or of licensed users.

Microgate s.r.l. reserves the right to modify the products described in this document and/or in the relative manuals without notice.

Collaborators in the creation of MicroLink and the preparation of the relative manuals are:

Ing. Roberto Biasi

Dr. Vinicio Biasi

Ing. Federico Gori

Ing. Alessandro Miorelli

Giuliano Menestrina

The software and manuals are available in the following languages: Italian, English, German and French.

Microgate S.r.L

39100 Bolzano - Bozen

Via Stradivari, 4 Stradivaristr.

ITALY

Tel. +39 471 501532 - Fax +39 471 501524

e-mail info@microgate.it

