

**EAZZYDV**

**CCTV Security  
DVR Camera**

**User Manual  
BC-680 Series**



# **Table of Content**

## **1. Summary**

**1.1 Overview .....P3**

**1.2 Applications and Universal Usage .....P3**

**1.3 Specifications .....P4**

**1.4 Package content .....P5**

**1.5 Attention .....P5**

## **2. Product outlook .....P6**

## **3. How to install / operate .....P7**

**3.1 Soft Stop Recording .....P7**

**3.2 Hard Stop Recording .....P8**

## **4. How to playback video .....P8**

## **5. Indication lights meaning .....P8**

## **6. Factory setting .....P8**

## **7. Changeable functions in software system .....P9**

## **8. Change functions procedure .....P10**

## **9. How to update patches .....P11**

## **10. Accessories .....P11**

## **11. Trouble Shooting .....P13**


# 1. Summary


## 1.1 Overview

It is a CCTV Security Digital Video Recorder (DVR) camera, not a real lamp. This is an innovative design and being patented. The idea is very simple to use and can be used worldwide, just insert a Micro-SD card and screw-in like a bulb, turn on power. It will automatically record video. The key advantage is no need technical background, you know how to install and use it, besides its video files are so small, a 32GB Micro-SD card can store more than 8 days video files (CIF format). Bring security into environments by your own like home, office, factory, shopping mall, restaurant and so on.

## 1.2 Applications and universal usage

This camera has been built-in a powerful security management system. Users can change settings to meet various applications.

| Application                                   | Description  |
|---|--|
| <b>1. Day and night non-stop surveillance</b> | It suits for environments need to record day and night 7daysx24hr, and large memory capacity. For this application, change recording mode to “Real Time” and file storage method to “Circular”.                                    |
| <b>2. Motion detection only</b>               | It suits for environments need to record moving objects only, ignoring static scenes. For this application, change recording mode to “Motion Detection ”   |
| <b>3. Spy camera</b>                          | This camera looks like a real lamp, it is good to be a spy camera, setting no light when recording, thefts would not discover it. For this application, change recording indication light to “Indication light off”.               |
| <b>4. Apply video recording law</b>           | In some countries, when recording video can not record audio together in public area by law. For this application, change video recording with sound to “No”.  |
| <b>5. Shooting at different angles</b>        | This camera can shoot at different angles, a 200mm long extension adapter included, bending it to make camera aiming at different angles.<br> |

|                           |  |
|---------------------------|--|
| <b>6. Universal Usage</b> | <p>Different countries have different bulb holder types. This camera comes with E27 adapter, we have different converters to match that, like E27 to GU10/ B22/ E12/ E14 and so on.</p>  |
|---------------------------|--|

### 1.3 Specifications

| Item Name                    | Bulb CCTV Security DVR Camera   |
|------------------------------|---|
| <b>Model No.</b>             | <b>BC-680</b> - using 3rd generation LED array (850nm wavelength)<br><b>BC-681</b> - using 24pcs IR LEDs<br><b>BC-682</b> – using 3 <sup>rd</sup> generation LED array (940nm wavelength)                           |
| <b>System</b>                | ARM9 32-bit Microprocessor core   |
| <b>Image Sensor</b>          | 1/4" CMOS sensor  |
| <b>Len Resolution</b>        | 300,000 pixel   |
| <b>Len</b>                   | 3.6mm(default)/2.8mm/6mm (optional)   |
| <b>Viewing Angle</b>         | 2.8mm – around 110 °<br>3.6mm – around 90 °<br>6mm - around 60 °  |
| <b>Video Format</b>          | 3GP   |
| <b>Video Resolution</b>      | 640x480(VGA) / 352x288(CIF)   |
| <b>Audio Format</b>          | ADPCM format  |
| <b>Microphone</b>            | Built-in  |
| <b>Memory Card Device</b>    | Micro-SD Card, 2GB-32GB   |
| <b>Video File Size</b>       | A 4GB card can store 24hrs video files (CIF format)   |
| <b>IR LED</b>                | 2pcs 3rd generation LED array (850nm wavelength), red dot light at night - BC-680<br>24pcs IR LEDs, red dot light at night - BC-681<br>2pcs 3rd generation LED array (940nm wavelength), no light at night - BC-682 |
| <b>Night vision Distance</b> | 15 – 20 Meters (6mm Len)<br>10 – 15 Meters (3.6mm Len)<br>5 – 10 Meters (2.8mm Len)   |

|                                  |                                 |
|----------------------------------|---------------------------------|
| <b>Motion Detection Distance</b> | 5 – 8 Meters                    |
| <b>Min. illumination</b>         | 0 Lux (IR on), 0.5 Lux (IR Off) |
| <b>Camera Adapter</b>            | E27                             |
| <b>Input Voltage</b>             | AC 110V – 250V                  |
| <b>Power Consumption</b>         | <5W                             |
| <b>Working Temperature</b>       | -20 ℃ ~ 70 ℃                    |
| <b>Dimension</b>                 | 110mm Height x 72mm Diameter    |
| <b>Weight</b>                    | 120g                            |

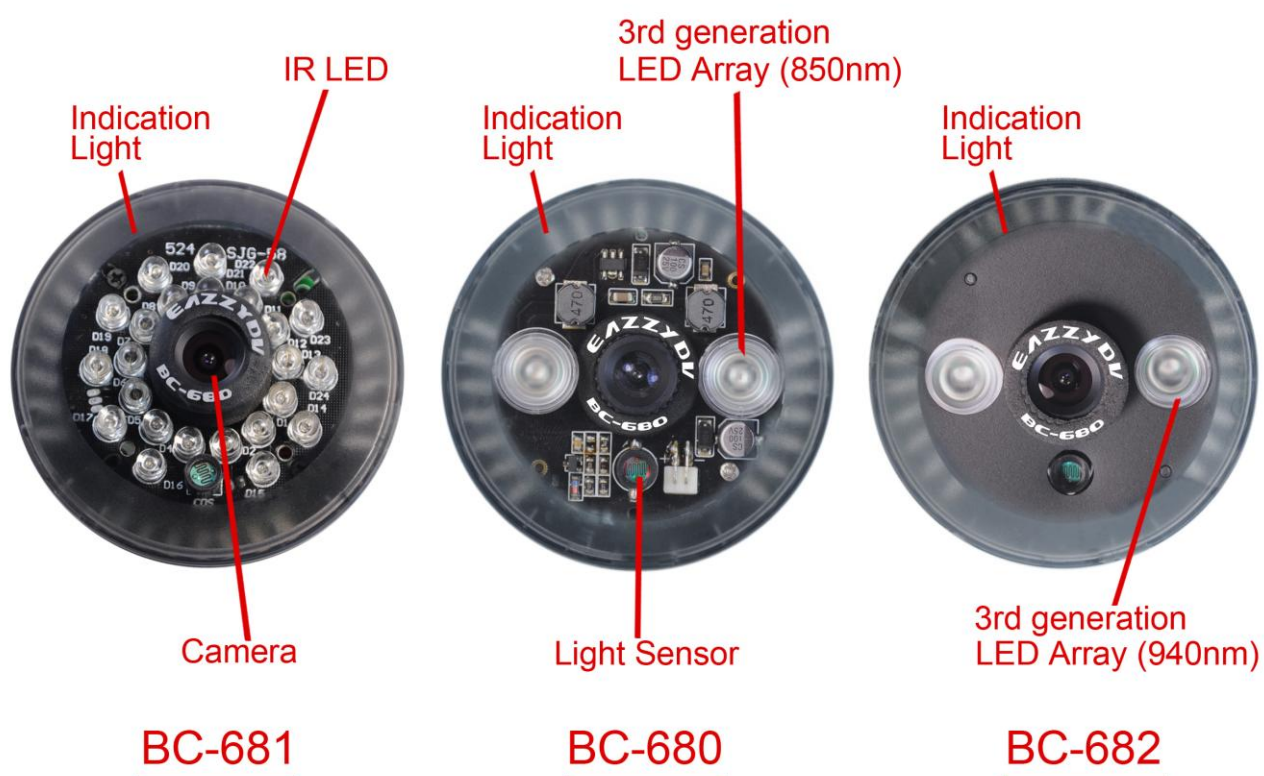
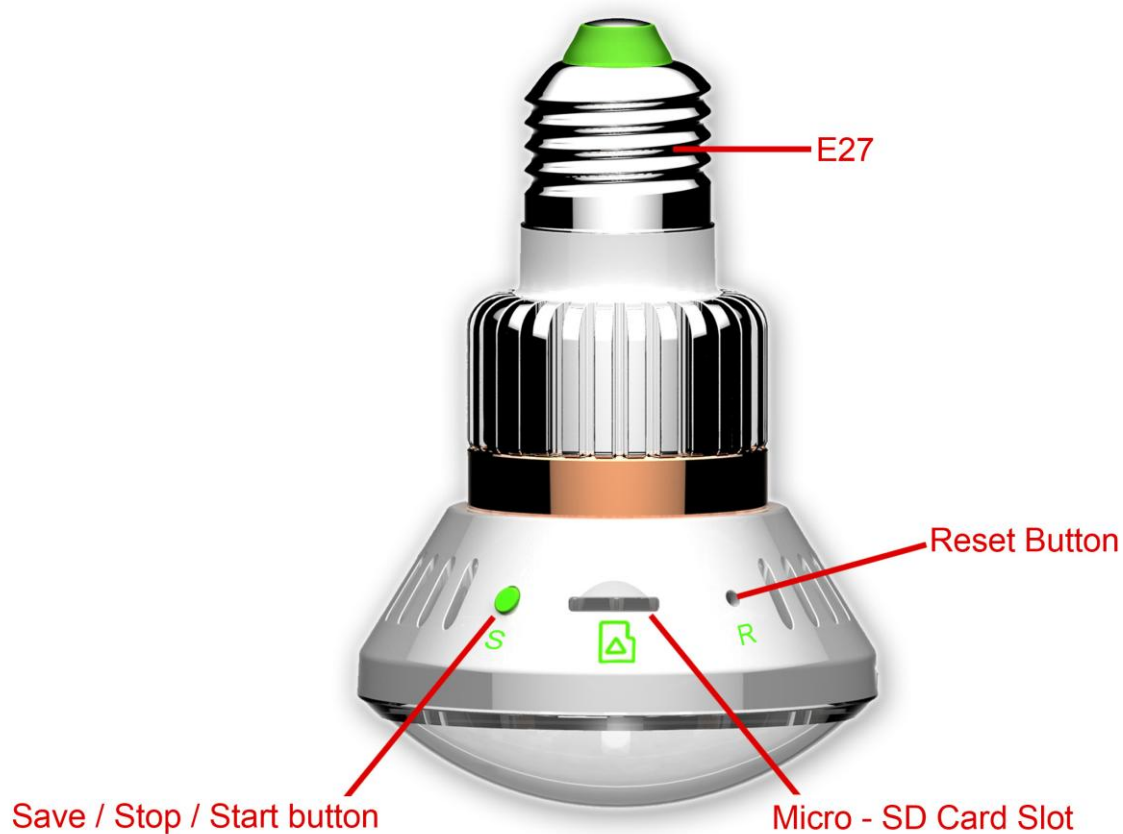
#### **1.4 Package Content**

- 1 x Bulb DVR Camera
- 1 x User Manual
- 1 x CD
- 1 x Micro-SD card reader

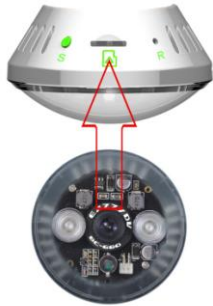
#### **1.5 Attention**

1. Before replacing the camera, please ensure the power is OFF and the circuit voltage is within the operation range (110 – 250V AC)
2. Please hold the plastic enclosure of the camera during installation or removal to ensure safety
3. If camera running for more than 2hrs with IR light On, the plastic case will be little bit warm that is normal, and the metal part will be warm too. But when IR light off, it will cool down quickly.

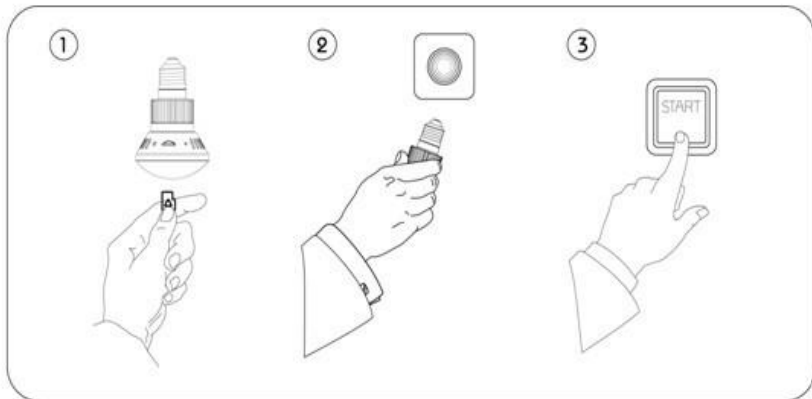
## 2. Product Outlook



### 3. How to install/operate



Camera upward direction  
is at same direction as  
Micro-SD slot



1. Insert a Micro SD card (2GB-32GB, format it for first time usage) into the camera card-slot
  - 1.1. Before screw-in the camera, ensure the socket power is off and the voltage is within the operation range (AC 110 – 250V)
2. Screw-in the camera like a bulb
3. Turn on power
4. First you would see [Blue](#) and [Red](#) indication lights are on, after few seconds only [Blue](#) indication light is flashing that means it is recording. But if only [Red](#) indication light is on, that means the Micro SD card has some problem, take it out and reformat it and insert it again.

#### 3.1 Soft Stop Recording



1. If it is recording, press the “S” button once.
2. The [Blue](#) and [Red](#) indication lights will be on. That means it is in standby mode, Wait for 3-5 seconds, push the card, it will eject out. When the card is out, only [Red](#) indication light is on.
3. If the card is not taken out, to continue recording, just press the “S” button once again, the [Blue](#)



indication light will keep flashing, that means it is recording.

4. If the card is taken out, insert the card again, wait for around 10 seconds, the [Blue](#) indication light will keep flashing. That means it is recording. Or insert the card and press “S” button once, you see the [Blue](#) indication light will keep flashing. That means it is recording.
5. Above actions are assuming the power is on

### 3.2 Hard Stop Recording

1. If it is recording, you want to stop recording, you can directly turn off power.
2. Wait for 3-5 seconds before take out the card
3. If you want to continue recording, just insert the card again and then turn on power

## 4. How to Playback video

1. Take out Micro-SD card from camera
2. Put the card into card reader and plug into computer usb port
3. On computer, a removable hard-disk pop-up
4. Browsing it's content, there is a folder called “VIDEO->RECORD”



5. All recorded video files are stored there, click a video file to play

|   |                     |  |            |
|---|---------------------|--|------------|
|  | 2012-08-17 15-04-49 |  | 209,088 KB |
|  | 2012-08-17 15-34-56 |  | 179,389 KB |
|  | 2012-08-17 16-05-04 |  | 198,037 KB |

6. If the video can not see images but sound only, then you have to install a media player called “VLC media player” from coming CD or download it from internet for latest version.  
([www.vlcmediaplayer.org](http://www.vlcmediaplayer.org))

## 5. Indication Lights Meaning

1. [Blue](#) light keeps flashing in a periodic interval, that means the camera is recording
2. [Blue](#) light flashing three times, then no more light on camera, that means the camera is starting recording in No indication light mode
3. [Blue](#) and [Red](#) lights are on, that means the camera is in standby mode with card inside
4. [Red](#) light on only, that means there is no Micro-SD card inside or The card has some problem

## 6. Factory Setting

The factory out setting :

| Parameters / Functions | Value       |
|------------------------|-------------|
| Video Format           | 3GP (fixed) |



|   |   |
|---|---|
| <b>Real Time Recording Mode, video files saved in</b> | 30 mins per file (fixed)  |
| <b>Motion Detection Mode, video files saved in</b>    | 2 mins per file if no more action, if objects keep moving, it will keep storing, the max. is 30 mins per file (fixed) |
| <b>Video file name format</b>                         | YYYY-MM-DD hh-mm-ss e.g. 2012-07-19 19-54-34 (fixed)  |
| <b>Recording Mode</b>                                 | Real Time (Changeable)  |
| <b>Resolution</b>                                     | 640x480 (Changeable)  |
| <b>Recording with Audio</b>                           | Yes (Changeable)  |
| <b>Indication Light</b>                               | On (Changeable)   |
| <b>Circular Storage</b>                               | Yes (Changeable)  |
| <b>Time Stamp on Video</b>                            | Yes (Changeable)  |

## 7. Changeable Functions in Software System

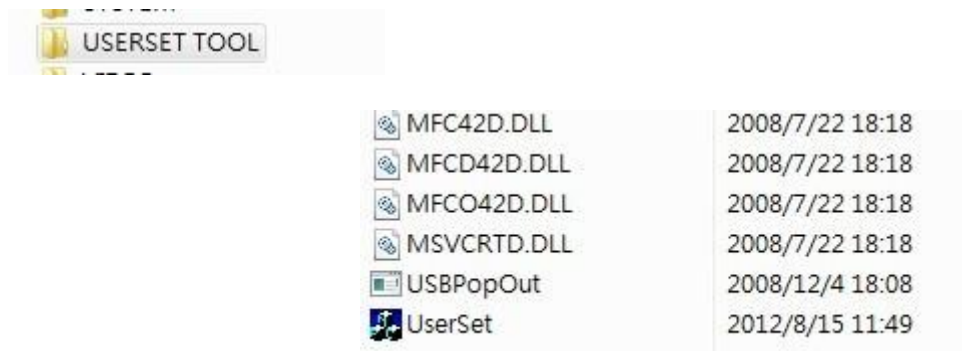
This camera has built-in a powerful security management system, there are 7 major functions. They are changeable to meet different applications. Change procedure is very simple just done on Micro-SD card.

| <b>Function Name</b>                                      | <b>Description</b>  |
|---|---|
| <b>Recording mode : Real time / Motion Detection only</b> | Real time Recording : Video files will be recorded in 30min per file, if there is object moving, the video will be recorded in 12fps, if there is no object moving, the video will be recorded in 1fps<br>Motion Detection only : If objection motion is detected it will start recording at 12fps, and if no more actions after 2 mins, it will save a 2 mins file. If the actions keep moving, it will keep record until no more action detected. The max recording time is 30mins per file. If no action being detected, no files will be created. |
| <b>CIF/VGA Resolution</b>                                 | Two video resolutions for selection, CIF 352x288 / VGA 640x480  |
| <b>Circular Storage/ Non-circular storage</b>             | Circular storage means if Micro-SD card is full, it will overwrite earlier files and keep storing. Non-circular storage means when Micro-SD card is full then stop recording  |
| <b>Recording Indication Light On/Off</b>                  | Recording indication light On, blue indication light will be flashing when recording. Recording indication  |

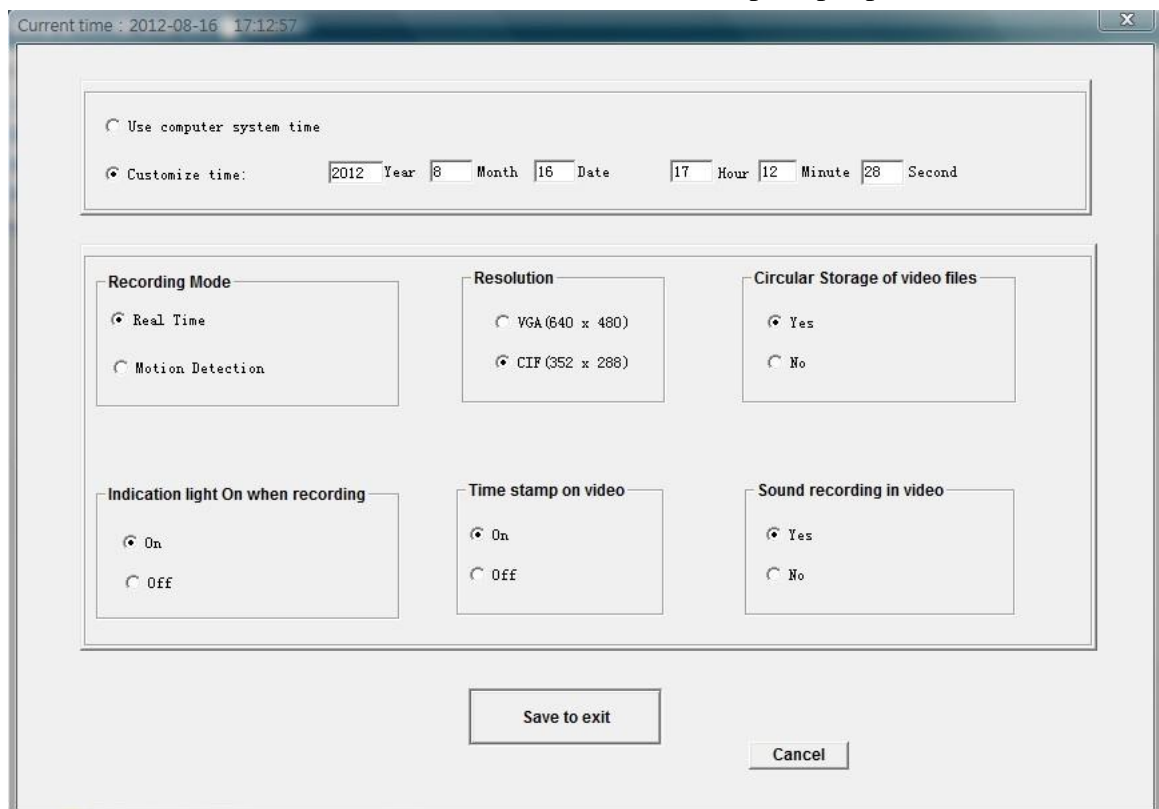
|                                 |  |
|---------------------------------|--|
|                                 | light Off means no light when recording. It is good for spy purpose.   |
| <b>Time Stamp on Video</b>      | Stamping date time on video or not   |
| <b>Recording Audio in video</b> | Recording video with sound or not, due to some countries not allowing recording video with audio in public area. |
| <b>Date time</b>                | Use computer system time or customize a time   |

## 8.Change Functions Procedure

1. Plug your Micro-SD card (the same one using in camera) into computer USB slot
2. Open the coming CD or go to our website [www.eazzydv.com](http://www.eazzydv.com) download area downloading it, there is a folder called “USERSET TOOL”



2. Copy the whole folder into your Computer or Micro-SD card
3. Double click to run the file “userset.exe”, a screen will prompt up



- Click to choose functions you want to change, click “Save to exit” button to save changes, otherwise click “cancel” button to quit.
- Take the card from computer and insert into your camera again, turn on power. It will auto apply the changes.





## 9. How to update patch

- Plug your Micro-SD card (the same one using in camera) into computer
- If there are new patches, we will list on [www.eazzydv.com](http://www.eazzydv.com) download section
- Download the patch and unzip it on your computer
- There should have a folder called “update”, copy the whole folder into your Micro-SD card
- Put the card into camera and turn on power again
- [Blue](#) light will keep flash for a while and then off. No indication light at all. That means updating completed.
- Turn off power, and then turn on again. It is running new updates.

## 10. Accessories





### 10.1 Extension Adapter

| Item No. | Picture   | Description   |
|----------|---|---|
| BC-AE16  |  | 160mm extension adapter, bending angle is around 10 °       |
| BC-AE20  |  | 200mm extension adapter, Max. bending angle is around 90 °  |
| BC-AE30  |  | 300mm extension adapter, max. bending angle is around 180 ° |
| BC-AE45  |  | 450mm extension adapter, max. bending angle is around 360 ° |







### 10.1 Extension Adapter with Plug

| Item No.    | Picture   | Description   |
|-------------|---|---|
| BC-AEP30UK  |  | 300mm long extension adapter with UK plug                           |
| BC-AEPC30UK |  | 300mm long extension adapter with UK plug plus clip and power cable |



### 10.3 Bulb Converter

| Item No.  | Picture   | Description            |
|-----------|---|------------------------|
| BC-ACB22  |  | Converting E27 to B22  |
| BC-ACGU10 |  | Converting E27 to GU10 |
| BC-ACE14  |  | Converting E27 to E14  |
| BC-ACE12  |  | Converting E27 to E12  |

## 11. Trouble Shooting

### 1. When playback video, there is sound only without pictures

**Solution :** This is the problem of your media player that does not support 3gp format video. Please download a media player called “VLC media player” from internet [www.vlcmmediaplayer.org](http://www.vlcmmediaplayer.org) . That can solve the problem.

### 2. When recording, after pressing the “S” button the Red and Blue indication light should be ON, but only Red indication light is ON and the Micro-SD card inside of camera

**Solution :** Press “S” button again once firmly, the blue and red indication lights will be ON. The problem is caused by in-proper contacting switch.

### 3. The Red and Blue indication light are on, a micro SD-card inside camera, press “S” button. The camera still not recording.

**Solution :** Take out the Micro SD card check it whether full and system set to non-circular recording. If so, change setting to circular recording or delete some old files inside of the card.

### 4. The Red and Blue indication lights are on, micro SD-card is not full, press “S” button. The camera still not recording.

**Solution :** Take out the Micro SD-card and check it, the card is good or not. If the card is good, press “R” button (reset button).

### 5. The bulb holder with power and all indication lights are off

**Solution :** Check power holder with power or not, if it is with power press the reset button of camera. If there is still no indication lights, then contact local maintenance service centre or our customer service support on website [www.eazzydv.com](http://www.eazzydv.com).