



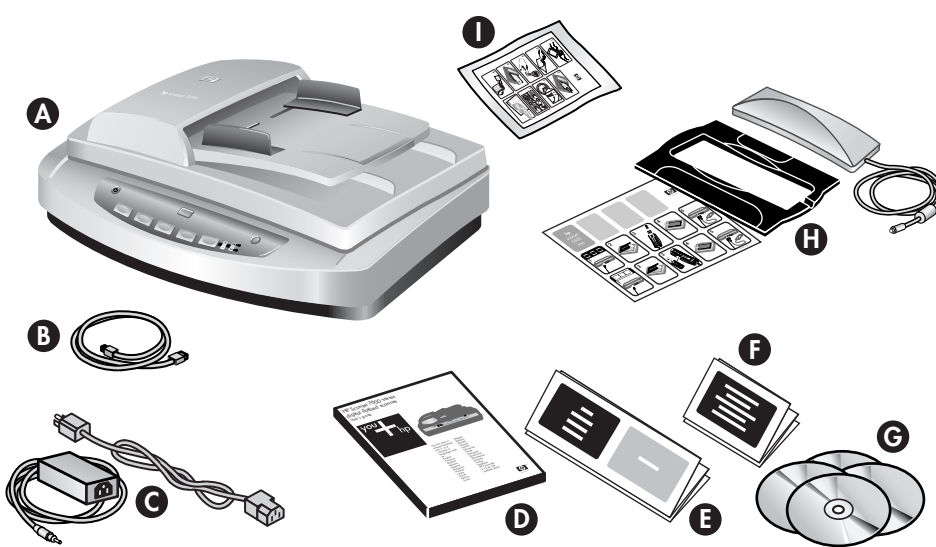
HP Scanjet 7600 series document flatbed scanner Setup

HP Scanjet 7600 series lorem ipsum dolor Ullam

English

1. Check the Box Contents

- A. Scanner with automatic document feeder (ADF)
- B. USB cable
- C. Power supply and power cord
- D. User's Manual (Printed or on CD 1)
- E. Setup Poster
- F. Warranty sheet
- G. Four or more CDs (depending on your region)
- H. Transparent materials adapter (TMA) for scanning slides and negatives
- I. ADF cleaning cloth



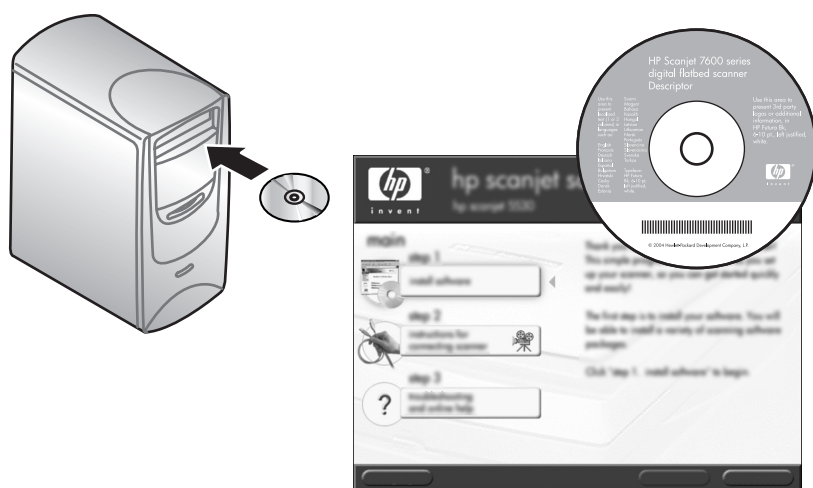
2. Install the Software

1. Close all programs.
2. Insert CD 1 for Windows or Macintosh and follow the onscreen instructions.

Windows: If the installation does not start automatically: On Start menu, click **Run** and type: **D:\setup.exe** (where D is the letter of the CD-ROM drive).

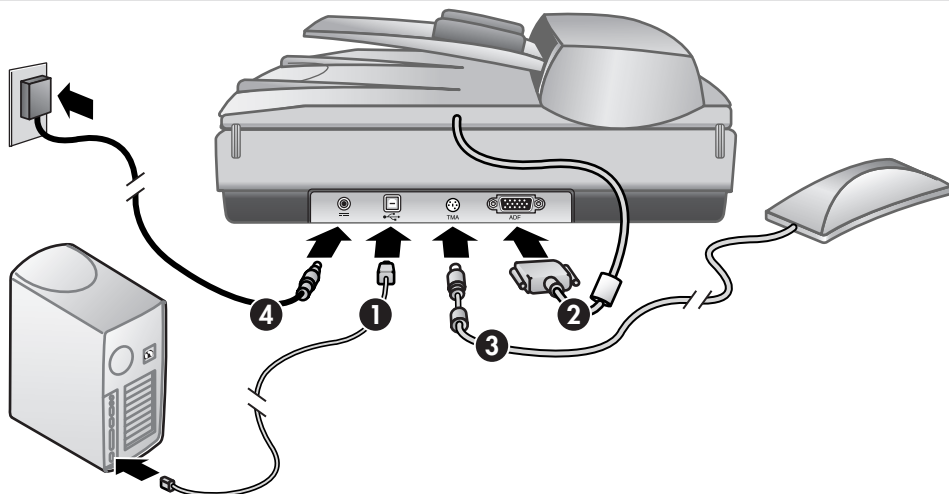
Macintosh: Double-click the installer icon on the CD.

Note: CD 2 (Windows only) contains additional optional software. To determine which software to install, see the onscreen installation instructions.



3. Connect the Scanner and Accessories in the Order Shown

1. Connect the USB cable to the scanner and to your computer.
2. Connect the ADF cable to its port on the back of the scanner.
3. Connect the TMA cable to its port on the back of the scanner.
4. Connect the power supply and the power cord and connect it to the scanner. Plug the power cord into a surge protector or grounded wall outlet. The scanner turns on.



4. To Scan

1. Place the original face-up in the ADF or face-down on the scanner glass as indicated by the reference mark.
2. Press the appropriate button and follow the onscreen instructions.

Scanner Buttons

- Scan Document** – Scans and sends text documents to your chosen destination.
- Scan Picture** – Scans photos and graphics to the HP Image Zone software.
- File Documents** – Scans the original document in black and white to be saved on a disk or CD.
- E-Mail** – Sends the scan to your e-mail software using settings optimized for e-mail (if your software is supported).
- Copy** – Sends the scan to a printer.

For more information on how to scan see the User's Manual (printed or on CD 1) or online help. To access the User's Manual on the CD, browse CD 1, select your language directory and click on the pdf file.



Suocirca

1. Check the Box Contents

- A. Scanner with automatic document feeder (ADF)
- B. USB cable
- C. Power supply and power cord
- D. User's Manual (Printed or on CD 1)
- E. Setup Poster
- F. Warranty sheet
- G. Four or more CDs (depending on your region)
- H. Transparent materials adapter (TMA) for scanning slides and negatives
- I. ADF cleaning cloth

2. Install the Software

1. Close all programs.
2. Insert CD 1 for Windows or Macintosh and follow the onscreen instructions.

Windows: If the installation does not start automatically: On Start menu, click **Run** and type: **D:\setup.exe** (where D is the letter of the CD-ROM drive).

Macintosh: Double-click the installer icon on the CD.

Note: CD 2 (Windows only) contains additional optional software. To determine which software to install, see the onscreen installation instructions.

3. Connect the Scanner and Accessories in the Order Shown

1. Connect the USB cable to the scanner and to your computer.
2. Connect the ADF cable to its port on the back of the scanner.
3. Connect the TMA cable to its port on the back of the scanner.
4. Connect the power supply and the power cord and connect it to the scanner. Plug the power cord into a surge protector or grounded wall outlet. The scanner turns on.

4. To Scan

1. Place the original face-up in the ADF or face-down on the scanner glass as indicated by the reference mark.
2. Press the appropriate button and follow the onscreen instructions.

Scanner Buttons

- Scan Document** – Scans and sends text documents to your chosen destination.
- Scan Picture** – Scans photos and graphics to the HP Image Zone software.
- File Documents** – Scans the original document in black and white to be saved on a disk or CD.
- E-Mail** – Sends the scan to your e-mail software using settings optimized for e-mail (if your software is supported).
- Copy** – Sends the scan to a printer.

For more information on how to scan see the User's Manual (printed or on CD 1) or online help. To access the User's Manual on the CD, browse CD 1, select your language directory and click on the pdf file.

Product Support

- www.hp.com/support for customer support
- www.shopping.hp.com (U.S. only) or www.hp.com (worldwide) for ordering HP accessories, supplies, and products

www.hp.com/support
www.shopping.hp.com (U.S. only)
www.hp.com (worldwide)

Product Support

- www.hp.com/support for customer support
- www.shopping.hp.com (U.S. only) or www.hp.com (worldwide) for ordering HP accessories, supplies, and products





HP Scanjet 7600 series eiusmod tempor HP Scanjet 7600 series lorem ipsum dolor

Sartre Ullam

Dorum

1. Check the Box Contents

- | | |
|---|--|
| A. Scanner with automatic document feeder (ADF) | F. Warranty sheet |
| B. USB cable | G. Four or more CDs (depending on your region) |
| C. Power supply and power cord | H. Transparent materials adapter (TMA) for scanning slides and negatives |
| D. User's Manual (Printed or on CD 1) | I. ADF cleaning cloth |
| E. Setup Poster | |



Suocirca

1. Check the Box Contents

- | | |
|---|--|
| A. Scanner with automatic document feeder (ADF) | F. Warranty sheet |
| B. USB cable | G. Four or more CDs (depending on your region) |
| C. Power supply and power cord | H. Transparent materials adapter (TMA) for scanning slides and negatives |
| D. User's Manual (Printed or on CD 1) | I. ADF cleaning cloth |
| E. Setup Poster | |

2. Install the Software

1. Close all programs.
2. Insert CD 1 for Windows or Macintosh and follow the onscreen instructions.

Windows: If the installation does not start automatically: On Start menu, click **Run** and type: **D:\setup.exe** (where D is the letter of the CD-ROM drive).

Macintosh: Double-click the installer icon on the CD.

Note: CD 2 (Windows only) contains additional optional software. To determine which software to install, see the onscreen installation instructions.



2. Install the Software

1. Close all programs.
2. Insert CD 1 for Windows or Macintosh and follow the onscreen instructions.

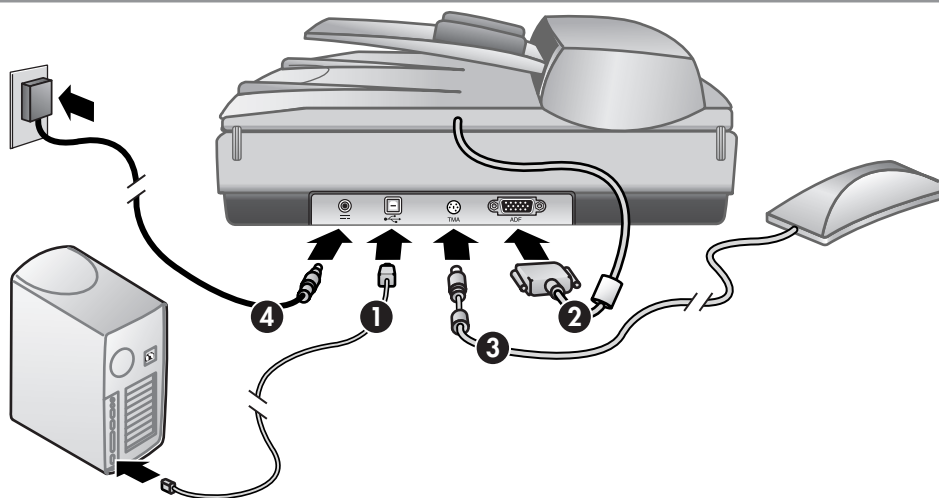
Windows: If the installation does not start automatically: On Start menu, click **Run** and type: **D:\setup.exe** (where D is the letter of the CD-ROM drive).

Macintosh: Double-click the installer icon on the CD.

Note: CD 2 (Windows only) contains additional optional software. To determine which software to install, see the onscreen installation instructions.

3. Connect the Scanner and Accessories in the Order Shown

1. Connect the USB cable to the scanner and to your computer.
2. Connect the ADF cable to its port on the back of the scanner.
3. Connect the TMA cable to its port on the back of the scanner.
4. Connect the power supply and the power cord and connect it to the scanner. Plug the power cord into a surge protector or grounded wall outlet. The scanner turns on.



3. Connect the Scanner and Accessories in the Order Shown

1. Connect the USB cable to the scanner and to your computer.
2. Connect the ADF cable to its port on the back of the scanner.
3. Connect the TMA cable to its port on the back of the scanner.
4. Connect the power supply and the power cord and connect it to the scanner. Plug the power cord into a surge protector or grounded wall outlet. The scanner turns on.

4. To Scan

1. Place the original face-up in the ADF or face-down on the scanner glass as indicated by the reference mark.
2. Press the appropriate button and follow the onscreen instructions.

Scanner Buttons

- Scan Document** – Scans and sends text documents to your chosen destination.
- Scan Picture** – Scans photos and graphics to the HP Image Zone software.
- File Documents** – Scans the original document in black and white to be saved on a disk or CD.
- E-Mail** – Sends the scan to your e-mail software using settings optimized for e-mail (if your software is supported).
- Copy** – Sends the scan to a printer.

For more information on how to scan see the User's Manual (printed or on CD 1) or online help. To access the User's Manual on the CD, browse CD 1, select your language directory and click on the pdf file.



4. To Scan

1. Place the original face-up in the ADF or face-down on the scanner glass as indicated by the reference mark.
2. Press the appropriate button and follow the onscreen instructions.

Scanner Buttons

- Scan Document** – Scans and sends text documents to your chosen destination.
- Scan Picture** – Scans photos and graphics to the HP Image Zone software.
- File Documents** – Scans the original document in black and white to be saved on a disk or CD.
- E-Mail** – Sends the scan to your e-mail software using settings optimized for e-mail (if your software is supported).
- Copy** – Sends the scan to a printer.

For more information on how to scan see the User's Manual (printed or on CD 1) or online help. To access the User's Manual on the CD, browse CD 1, select your language directory and click on the pdf file.

Product Support

- www.hp.com/support for customer support
- www.shopping.hp.com (U.S. only) or www.hp.com (worldwide) for ordering HP accessories, supplies, and products

www.hp.com/support
www.shopping.hp.com (U.S. only)
www.hp.com (worldwide)

Product Support

- www.hp.com/support for customer support
- www.shopping.hp.com (U.S. only) or www.hp.com (worldwide) for ordering HP accessories, supplies, and products



L1910-90103

