



**ENLUH-302**

SuperSpeed USB 3.0 PCIe Adapter

**User's Manual**

## **ABOUT THIS MANUAL**

This manual is designed for use with the SuperSpeed USB 3.0 PCIe Adapter. Information in this document has been carefully checked for accuracy; however, no guarantee is given to the correctness of the contents. The information in this document is subject to change without notice. The manufacturer does not make any representations or warranties (implied or otherwise) regarding the accuracy and completeness of this document and shall in no event be liable for any loss of profit or any commercial damage, including but not limited to special, incidental, consequential, or other damage.

## **SAFETY INSTRUCTIONS**

Always read the safety instructions carefully:

- Keep this User's Manual for future reference.
- Keep this equipment away from humidity.

If any of the following situations arises, get the equipment checked by a service technician:

- The equipment has been exposed to moisture.
- The equipment has been dropped and damaged.
- The equipment has obvious sign of breakage.
- The equipment has not been working well or you cannot get it to work according to the User's Manual.

## **COPYRIGHT**

This document contains proprietary information protected by copyright. All right are reserved. No part of this manual may be reproduced by any mechanical, electronic or other means, in any form, without prior written permission of the manufacturer.

# Table of Contents

<b>1. INTRODUCTION .....</b>	<b>3</b>
<b>FEATURES .....</b>	<b>3</b>
<b>PACKAGE CONTENTS .....</b>	<b>3</b>
<b>SYSTEM REQUIREMENTS .....</b>	<b>3</b>
<b>2. INSTALLATION .....</b>	<b>4</b>
<b>WINDOW 7 / XP / WINDOWS VISTA .....</b>	<b>4</b>
<b>3. HARDWARE INSTALLATION .....</b>	<b>9</b>
<b>4. INSTALLATION VERIFICATION .....</b>	<b>11</b>
<b>WINDOW XP .....</b>	<b>11</b>
<b>WINDOW VISTA/ WINDOWS 7 .....</b>	<b>12</b>
<b>5. SPECIFICATION .....</b>	<b>13</b>
<b>6. REGULATORY COMPLIANCE .....</b>	<b>13</b>
<b>FCC CONDITIONS .....</b>	<b>13</b>
<b>CE .....</b>	<b>13</b>

# 1. Introduction

Encore Electronics' SuperSpeed USB 3.0 PCIe adapter adds two USB 3.0 ports to your desktop computer. The data transfer rate is at an amazing speed up to 5 Gbps — 10 times faster than USB 2.0 (480 Mbps). Now, you can connect to the latest USB devices, such as external hard drives, Blu-ray burners, external video adapters and camcorders.

The SuperSpeed USB 3.0 PCIe adapter is ideal for professionals who need high-performance storage devices and people who enjoy watching HD videos. ENLUH-320 has advanced power management feature. ENLUH-320 also is backward compatible with USB 2.0 and USB 1.1.



## Features

- Up to 10X Faster than USB 2.0
- Less File Transfer Time
- Backward Compatibility
- More Efficient Power Usage
- Better Device Stability with Increased Power Output

## Package Contents

- SuperSpeed USB 3.0 PCIe Adapter x 1
- Quick Installation Guide x 1
- Driver CD x 1

## System Requirements

- Windows® -based (Windows®XP, Windows®Vista™, Windows®7) computer with available PCI express slot.

※Notice: Mac systems do not support this USB 3.0 2-port PCIe Adapter

## 2. Installation

You will need to install the driver for your SuperSpeed USB 3.0 PCIe adapter first. Please follow the procedures as below.

### Window 7 / XP / Windows Vista

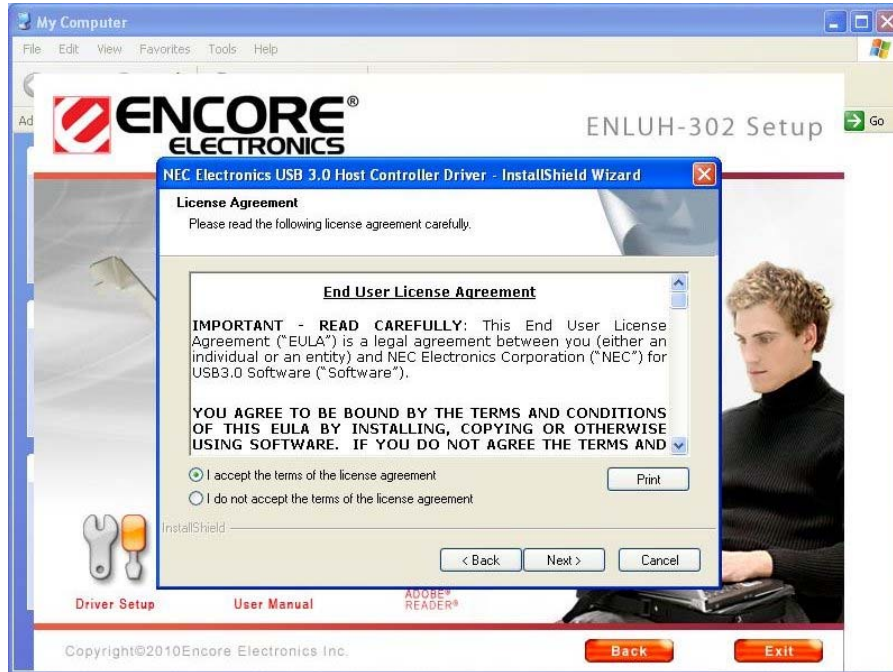
1. Insert the provided Driver into CD-ROM. The following screen will show up and please choose the correct product model, **ENLUH-302**.



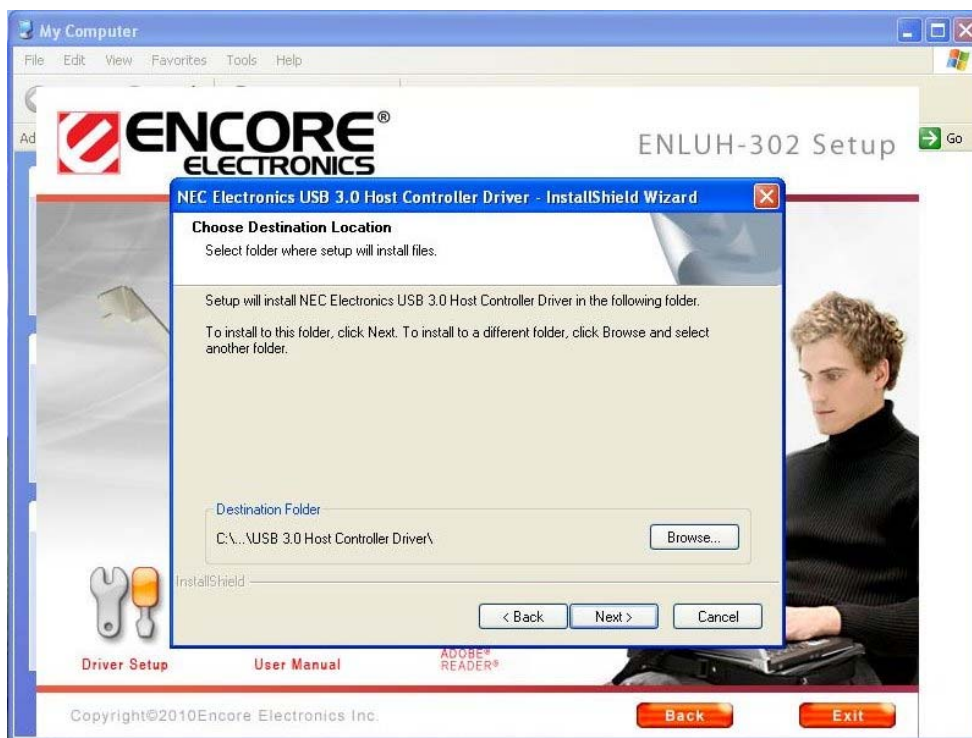
2. Click **“Driver Setup”** to install driver, then press **Next** to continue.



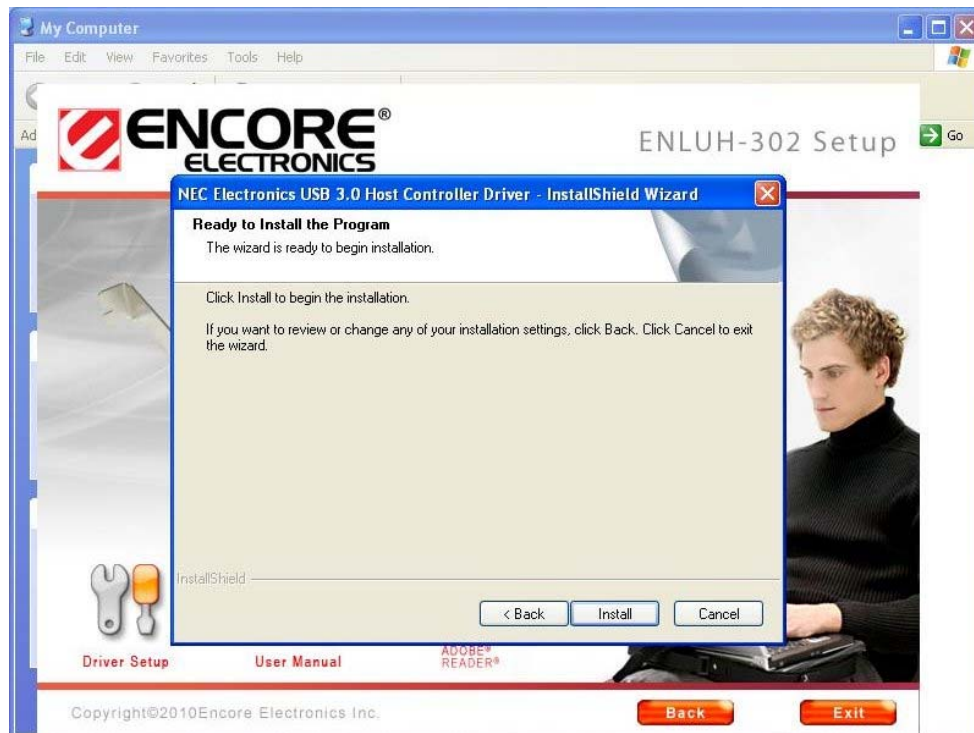
3. After reading **End-User License Agreement**, please select **"I accept the terms in the License Agreement"** and click **Next**.



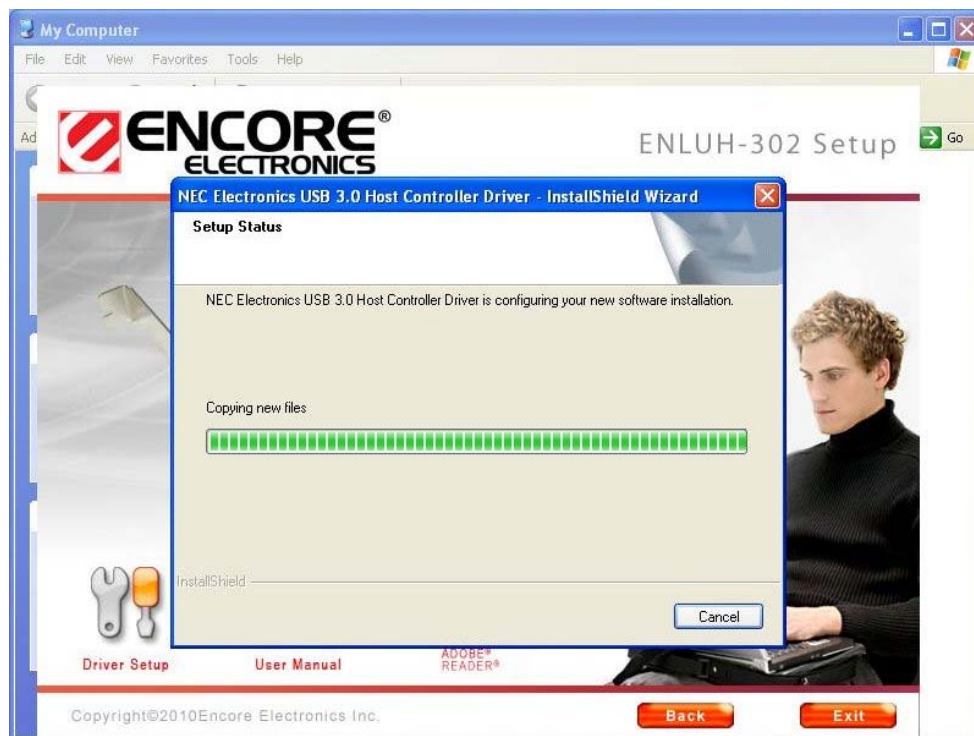
4. Please click **Browse** to choose the **Destination Folder**. After that, please click **Next**.



5. Click **Install** to install NEC Electronics USB 3.0 Host Controller Driver.



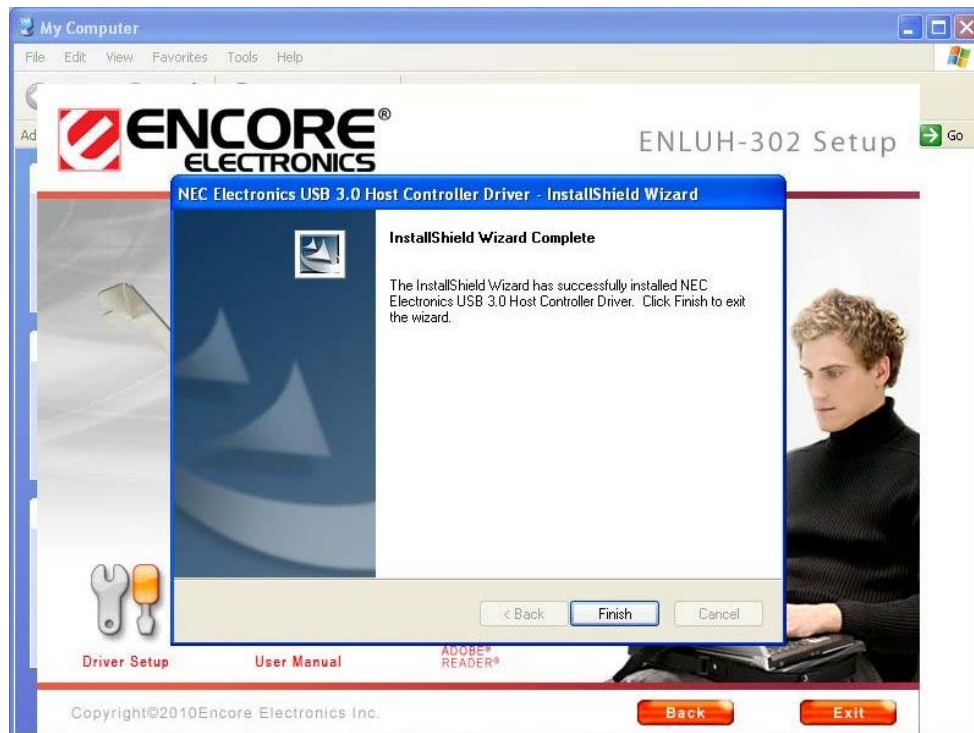
6. It will take a while to install the Driver.



*Notice: The Software Installation may pop-up during installation. Please click Continue Anyway to complete the installation.*



7. Please click Finish to complete the NEC Electronics USB 3.0 Host Controller Driver.



\*Actual strings depend on your operation system. These screen shots are from Windows XP and might vary slightly for each operation system.

*Note: Please refer to next chapter to get more information about installing PCIe adapter.*

### 3. Hardware Installation

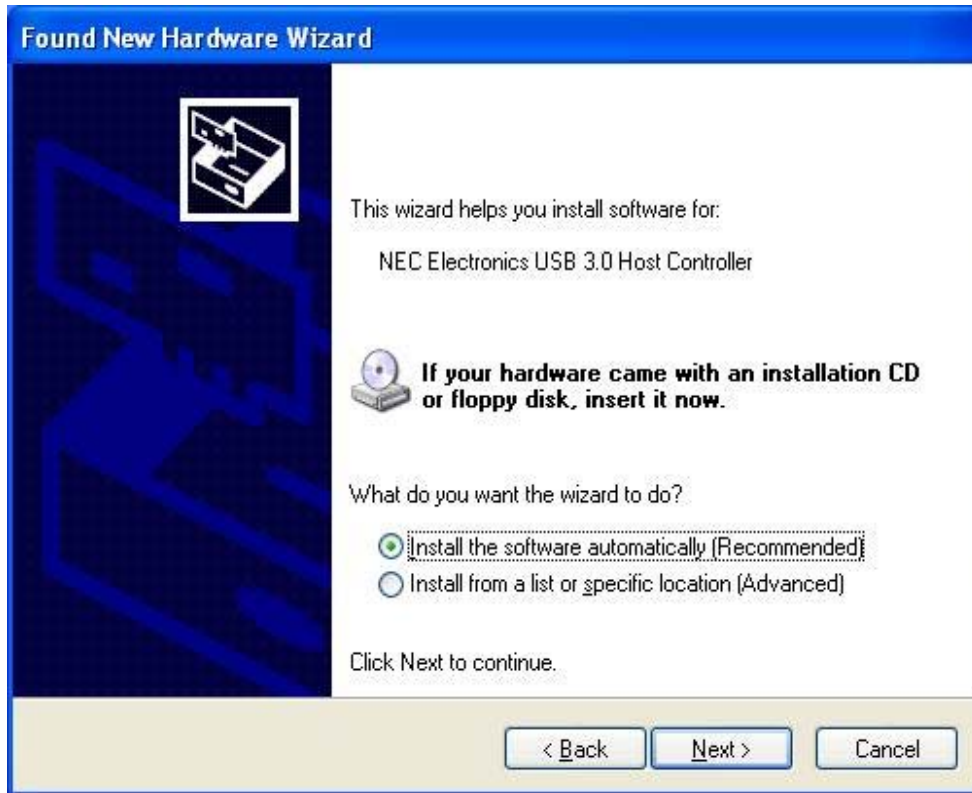
1. Turn off your computer, unplug the power cord from your computer, and then remove the cover of the computer.
2. Plug the PCIe adapter into the PCIe slot of your computer.
3. Plug the power connector from your computer's internal power supply to the SuperSpeed 3.0 PCIe adapter.
4. Put the cover back, plug the power cord back to your computer, and then turn on your computer.

#### For Window XP

1. When inserting SuperSpeed USB 3.0 2-Port PCIe Adapter into the slot, the following screen will show up. Please choose “**Yes, this time only**” and click **Next**.



2. Please choose “**Install the software automatically**” and click Next.



*Notice: The sign of Hardware Installation may show up, please click Continue Anyway.*

3. Please click **Finish** to complete the Found New Hardware Wizard.



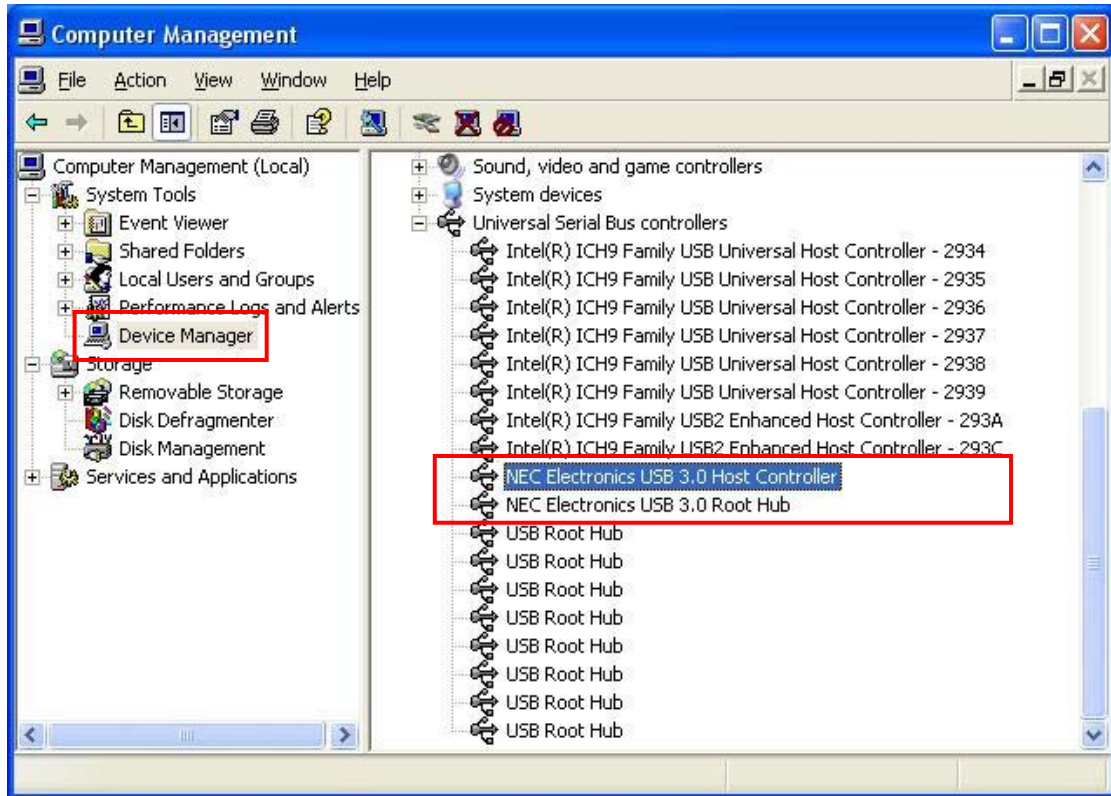
\*Actual strings depend on your operation system. These screen shots are from Windows XP and might vary slightly for each operation system.

*Notice: The Installation of Found New Hardware Wizard will show up twice, please follow the above steps to complete the installation.*

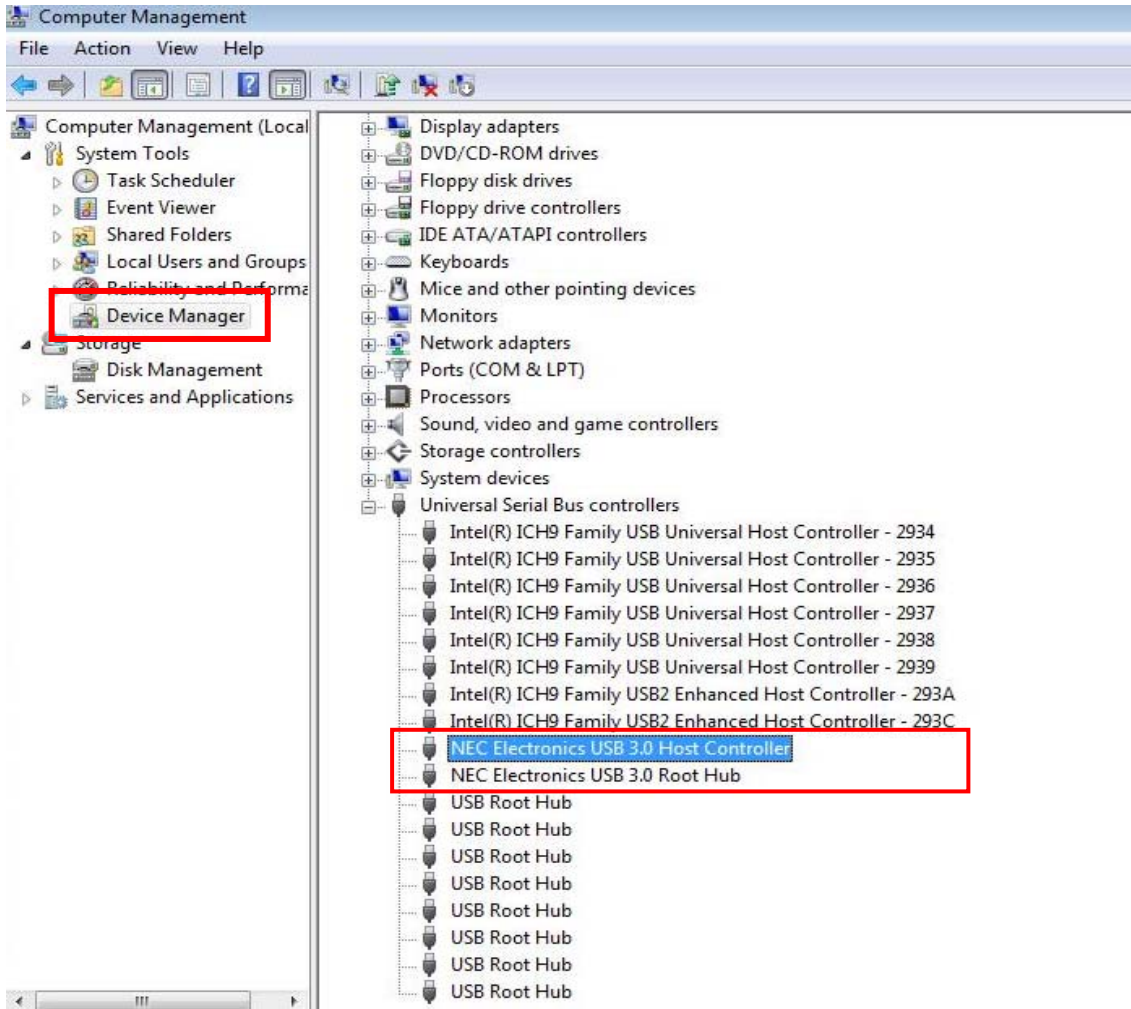
## 4. Installation Verification

After finishing driver installation and plugging this PCIe adapter to PC, the system will detect the device. You can go to Device Manager to verify the entire installation.

### Window XP



# Window Vista/ Windows 7



## 5. Specification

Description	SuperSpeed USB 3.0 PCIe Adapter
Standard	USB 3.0, backward compatible with USB 2.0 / 1.x
USB Port	USB 3.0 SuperSpeed Downstream port x 2
Data transfer rate	USB 3.0: up to 5 Gbps USB 2.0: up to 480 Mbps USB 1.x: up to 12 Mbps
Interface	PCI Express x1
OS Supported	Windows® XP/Vista/7 (32/64 bits)
Power Output	5V / 900mA

## 6. Regulatory Compliance

### FCC Conditions

This equipment has been tested and found to comply with Part 15 of the FCC Rules. Operation is subject to the following two conditions:

- I. This device may not cause harmful interference
- II. This device must accept any interference received. Including interference that may cause undesired operation.

**Important!** Changes or modifications not expressly approved by the manufacturer responsible for compliance could void the user's authority to operate the equipment. Use an approved phone set.

### CE

This equipment is in compliance with the requirements of the following regulations: EN 55 022: CLASS B

