

## Specifications

<b>Table size</b>	305 (W) x 230 (D) mm [12 (W) x 9.1 (D) in.]	<b>Power consumption</b>	122 W
<b>XYZ-axis travels</b>	305 (X) x 230 (Y) x 40 (Z) mm [12 (X) x 9.1 (Y) x 1.6 (Z) in.]	<b>Acoustic noise level</b>	During operation: 60 dB (A) or less (when not cutting), During standby: 40 dB(A) or less (as specified by ISO 7779)
<b>XYZ-axis drive system</b>	Stepping motor, 3-axis simultaneous control	<b>Dimensions</b>	616 (W) x 591 (D) x 393 (H) mm [24.3 (W) x 23.3 (D) x 15.5 (H) in.]
<b>Operating speed</b>	X and Y axes: 0.1 to 60 mm/sec. (0.004 to 2.4 in./sec), Z axis: 0.1 to 30 mm/sec. (0.004 to 1.2 in./sec)	<b>Weight</b>	34 kg (75 lb.)
<b>Software resolution</b>	0.01 mm/step or 0.025 mm/step (0.0004 in./step or 0.001 in./step)	<b>Environmental</b>	Temperature: 5 to 40 °C (41 to 104 °F), Humidity: 35 to 80 % (no condensation) Ambient pollution degree: 3 (as specified by IEC 60664-1)
<b>Mechanical resolution</b>	X and Y axes: 0.0025 mm/step (0.0001 in./step), Z axis: 0.00125 mm/step (0.0005 in./step)	<b>Accessories</b>	Power cord, depth regulator nose (nose unit), nose-unit retainer (retaining screw, spring), spare mounting screw (for the cutter holder), character cutter (diameter 3.175 mm), flat cutter (diameter 3.175 mm), wrench, solid collet (diameter 3.175 mm), solid collet (diameter 4.36 mm), hexagonal wrench, hexagonal screwdriver, handy panel, adhesive sheet, vacuum adapter for chip cleaning, Roland Software CD-ROM, Roland EngraveStudio™ CD-ROM, Roland Software Program Guide, Roland EngraveStudio™ Program Guide, and User's Manual
<b>Spindle motor</b>	Brushless DC motor, maximum 50 W		
<b>Spindle speed</b>	5,000 to 20,000 rpm		
<b>Tool chuck</b>	Cutter holder, collet method		
<b>Loadable workpiece thickness</b>	Maximum 40 mm (1.6 in.) or 38 mm (1.5 in.) when nose unit is used		
<b>Connectivity</b>	USB (compliant with Universal Serial Bus Specification Revision 1.1) or serial (RS-232C-compliant)		
<b>Control command set</b>	RML-1		
<b>Power requirements</b>	AC 100 to 120 V ±10%, 1.3 A, 50/60 Hz (overvoltage category II, IEC 60664-1); or AC 220 to 240 V ±10%, 0.6 A, 50/60 Hz (overvoltage category II, IEC 60664-1)		

## Roland EngraveStudio™ System Requirements

<b>OS</b>	Windows® 8/8.1 (32/64-bit), Windows® 7 (32/64-bit), Windows Vista® Home Premium (32-bit)/Business (32/64-bit), Windows® XP Home Edition/XP Professional (32/64-bit)
<b>CPU</b>	Pentium® III, 1 GHz or faster recommended
<b>RAM</b>	Windows 7 or later: 1GB or more recommended Windows Vista: 512 MB or more recommended Windows XP: 256 MB or more recommended

## Options

### Center vise



#### ZV-23C

Loadable material using jig for nameplate:  
152mm(X) x 148mm (Y), and 35mm (H)  
Loadable material  
using jig for either pen or tube:  
90mm(X) x 146mm(Y), and Max 20mm thick

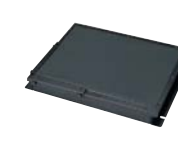
### T-slot table



#### ZTT-35

Table size:  
292mm(X) x 220mm(Y)  
Dimensions:  
355mm(W) x 230mm(D) x 40mm(H)

### Vacuum table



#### ZV-23A

Table size:  
305mm(X) x 230mm(Y)  
Loads material up to 35mm thick.  
Requires installation of a vacuum  
pump before use.

Item	Model number	Description
Engraving cutters (for plastic)	ZEC-A2013	Cemented carbide dia. = 3.175 x 114 (L) x 0.127 (W)
	ZEC-A2025	Cemented carbide dia. = 3.175 x 114 (L) x 0.254 (W)
	ZEC-A2051	Cemented carbide dia. = 3.175 x 114 (L) x 0.508 (W)
	ZEC-A2076	Cemented carbide dia. = 3.175 x 114 (L) x 0.762 (W)
	ZEC-A4013	Cemented carbide dia. = 4.36 x 165 (L) x 0.127 (W)
	ZEC-A4025	Cemented carbide dia. = 4.36 x 165 (L) x 0.254 (W)
	ZEC-A4051	Cemented carbide dia. = 4.36 x 165 (L) x 0.508 (W)
Engraving cutters (for aluminum or brass)	ZEC-A2013-BAL	Cemented carbide dia. = 3.175 x 114 (L) x 0.13 (W)
	ZEC-A2025-BAL	Cemented carbide dia. = 3.175 x 114 (L) x 0.25 (W)
	ZEC-A4013-BAL	Cemented carbide dia. = 4.36 x 165 (L) x 0.13 (W)
	ZEC-A4025-BAL	Cemented carbide dia. = 4.36 x 165 (L) x 0.25 (W)
	ZEC-A2150	Cemented carbide dia. = 3.175 x 114 (L) x 1.52 (W)
	ZEC-A2190	Cemented carbide dia. = 3.175 x 114 (L) x 1.91 (W)
	ZEC-A2230	Cemented carbide dia. = 3.175 x 114 (L) x 2.29 (W)
Parallel engraving cutters (for plastic)	ZEC-A2320	Cemented carbide dia. = 3.175 x 114 (L) x 3.175 (W)
	ZEC-A4150	Cemented carbide dia. = 4.36 x 165 (L) x 1.52 (W)
	ZEC-A4190	Cemented carbide dia. = 4.36 x 165 (L) x 1.91 (W)
	ZEC-A4230	Cemented carbide dia. = 4.36 x 165 (L) x 2.29 (W)
	ZEC-A4320	Cemented carbide dia. = 4.36 x 165 (L) x 3.175 (W)
	ZEC-A4380	Cemented carbide dia. = 4.36 x 165 (L) x 3.81 (W)
	ZEC-A4430	Cemented carbide dia. = 4.36 x 165 (L) x 4.34 (W)
Quarter round cutters (for plastic)	ZEC-A2013-QR	Cemented carbide dia. = 3.175 x 114 (L) x 0.13 (W)
	ZEC-A2025-QR	Cemented carbide dia. = 3.175 x 114 (L) x 0.25 (W)
	ZEC-A4013-QR	Cemented carbide dia. = 4.36 x 165 (L) x 0.13 (W)
	ZEC-A4025-QR	Cemented carbide dia. = 4.36 x 165 (L) x 0.25 (W)

dia = shank diameter, L = overall length, W = blade width, unit = mm

Item	Model number	Description
Diamond engraving cutters	ZDC-A2000	Diamond dia. = 3.175 x 127 (L)
	ZDC-A4000	Diamond dia. = 4.36 x 178 (L), only operates with the ZC-E436 collet
Square end-mill	ZHS-100	High speed steel dia. = 1 3 (ℓ) x 6 (d) x 50 (L) x 2NT
	ZHS-200	High speed steel dia. = 2 6 (ℓ) x 6 (d) x 50 (L) x 2NT
	ZHS-300	High speed steel dia. = 3 10 (ℓ) x 6 (d) x 50 (L) x 2NT
	ZHS-400	High speed steel dia. = 4 12 (ℓ) x 6 (d) x 50 (L) x 2NT
	ZHS-500	High speed steel dia. = 5 15 (ℓ) x 6 (d) x 55 (L) x 2NT
	ZHS-600	High speed steel dia. = 6 15 (ℓ) x 6 (d) x 55 (L) x 2NT
Ball end-mill	ZCB-150	Cemented carbide R1.5 25 (ℓ) x 2.4 (Lc) x 65 (L) x 6 (d) x 2NT
	ZCB-200	Cemented carbide R2 25 (ℓ) x 3.2 (Lc) x 70 (L) x 6 (d) x 2NT
	ZCB-300	Cemented carbide R3 30 (ℓ) x 4.8 (Lc) x 80 (L) x 6 (d) x 2NT

dia = flute diameter, R = flute radius, ℓ = flute length, Lc = blade length,  
L = overall length, d = shank diameter, NT = number of flute, unit = mm

Item	Model number	Description
Collets for end-mill	ZC-23	Diameter 6 mm, 5 mm, 4 mm, and 3 mm collets: 1 pc. each
	ZC-23-3	Diameter 3 mm collet: 1 pc.
	ZC-23-4	Diameter 4 mm collet: 1 pc.
	ZC-23-6	Diameter 6 mm collet: 1 pc.
	ZC-23-3175	Diameter 3.175 mm collet: 1 pc.
	ZC-23-6.35	Diameter 6.35 mm collet: 1 pc.
	ZC-E436	Diameter 4.36 mm collet: 1 pc.
Collet for ZDC-A4000	ZC-E436	Diameter 4.36 mm collet: 1 pc.
Nose cone	ZDN-200	Inner diameter 2 mm, outer diameter 4.2 mm, for engraving text
Spindle unit	ZS-35	
Adhesive sheet for securing material	AS-10	210 mm x 140 mm (8-1/4 in. x 5-1/2 in.), 10 sheets

Roland DG products that feature this environmental label meet the company's criteria  
for environmental consciousness, a set of standards based on ISO 14021 self-declaration type II.  
For more information, please visit [www.rolanddg.com](http://www.rolanddg.com).



Roland reserves the right to make changes in specifications, materials or accessories without notice.  
Your actual output may vary. For optimum output quality, periodic maintenance to critical components  
may be required. Please contact your Roland dealer for details. No guarantee or warranty is implied  
other than expressly stated. Roland shall not be liable for any incidental or consequential damages,  
whether foreseeable or not, caused by defects in such products.  
Reproduction or use of copyrighted material is governed by local, national, and international laws.  
Customers are responsible for observing all applicable laws and are liable for any infringement.  
All trademarks are the property of their respective owners. Roland DG Corp. has licensed the MMP  
technology from the TPL Group.

Imagine.

**Roland®**

# DESKTOP ENGRAVER EGX-350



**Roland®**

**AUTHORIZED DEALER:**

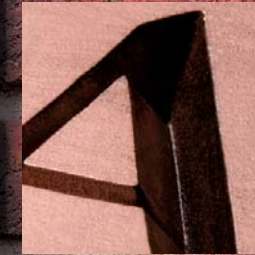
Printed in Japan. RDG-416008999 14 APR AB-2 P-S

[www.rolanddg.com](http://www.rolanddg.com)





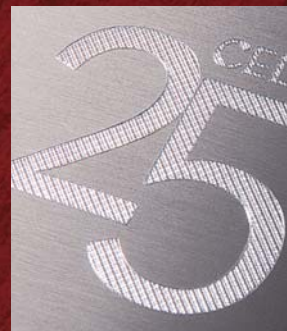
Beautifully engrave precision text and other fine details.



V-Carving mode produces sharp angles for three-dimensional lettering with a hand-crafted look.



# Build Your Business with High-Quality, On-Demand Engraving



Choose from a wide variety of engraving patterns for added texture.



Get high quality results every time — even on acrylic.



## A Complete Engraving Solution

With the new EGX-350 desktop engraver, you can easily expand your business by adding valuable personalized items to your product line. The EGX-350 quickly engraves a wide variety of materials right in your sign shop, engraving business or retail store. This highly versatile tool is remarkably easy to use and expertly engineered to produce sharp, precision text and graphics. A complete, compact solution, the EGX-350 comes with everything you need to get started. Bundled Roland EngraveStudio software offers advanced features including a new V-Carving mode which produces a hand-carved look, and a new engrave simulation function that saves time and materials by allowing you to preview your designs before engraving.

## Increase the Value of Your Products

With the EGX-350, you can create beautiful custom signs and nameplates for both indoor and outdoor display including storefront and directional signage. Turn ordinary gifts, awards, promotional items and padfolios or pens into treasured mementos by personalizing them with names, events or dates. You can even produce design templates for heat pressing rhinestones onto t-shirts, handbags and other apparel items. Select from a variety of supported materials including plastic, acrylic, aluminum, stainless steel, brass and wood. Unlike laser engravers, the EGX-350 preserves the original colors and textures of wood, brass and artificial marbles for a beautifully finished look.

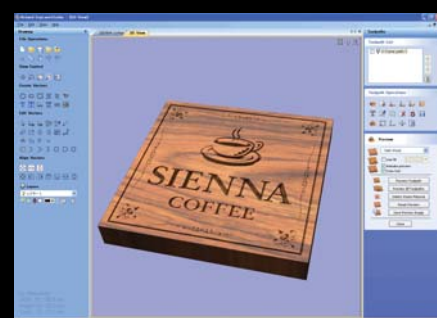
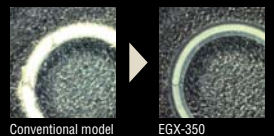
## Easy to Use

The EGX-350 connects to your PC through a USB port and is extremely easy to setup and operate. An easy-navigation control panel is located away from the production area offering a clear view of the engraving table. The EGX-350 also features an automatic surface detector that automatically determines the height of the material (Z-zero) for quality engraving at a consistent depth.\*1 An adjustable flip cover opens in two positions allowing efficient access to the engraved product. The brushless DC motor is highly durable for long-lasting performance, and the vacuum adapter attaches easily to the spindle to ensure clean operation.

\*1 Automatic surface detector works with included Dr. Engrave software and may not be able to engrave some materials depending on their shape and/or design.

## High-Quality Results

The EGX-350 is precision-engineered for performance with quality parts that minimize excess movement and vibration from the device. As a result, the EGX-350 produces sharp, crisp text and graphics for reliable results time after time. New Roland EngraveStudio software delivers fine, craftsman-style workmanship for stunning engraved products that project hand-rendered beauty.

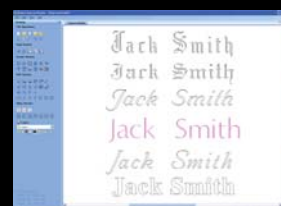


## Maximize Your Productivity with Roland EngraveStudio Software

### Roland EngraveStudio™

Roland EngraveStudio offers a variety of engraving depths that together produce a truly hand-carved look. Preview your designs on screen through the engraving simulation function that presents both the tool path and anticipated results prior to engraving. Import designs from Adobe Illustrator\*2 (ai and eps) and CorelDraw (eps)\*3 for precision text and graphics. Roland EngraveStudio is compatible with Windows® 8/8.1, Windows® 7, Windows Vista® and Windows® XP.

\*2 Before importing Adobe Illustrator data into Roland EngraveStudio, Roland recommends converting vector geometry and text to curves. For best results, switch off all patterns and/or color fills and save files in eps format.  
\*3 Supports ai (version 8.0), and eps (version 3.0) file formats.



Engrave text with a variety of fonts including TrueType or Single Line.

## DESKTOP ENGRAVER

# EGX-350

