

User's Manual
for
PocketFWE-PDA Program
(Beta Version)

Contents

Overview of PocketFWE.....	5
1 Introduction	5
2 Key Benefits	6
3 Specification.....	6
Program Installation	7
1 PocketFWE Software Installation.....	7
2 PocketFWE Uninstallation	11
Running the Program	14
1 PocketFWE Serial Key Installation	14
2 Serial Key Registration	18
Server Registration and Camera view	23
1 FlexWATCH server registration	23
2 View Live video.....	26
2.1 Running the camera	26
2.2 Camera Control	28
2.2.1 Frame Rate Control.....	28
2.2.2 Camera Direction change.....	28
2.2.3 Image size change	30
2.2.4 PTZ(Pan/Tilt/Zoom) control.....	31
Recording and Playback	33
1 Recording	33
2 Playback of archived video	34
PocketFWE information	36
Trouble Shooting	37

Using License Agreement for PocketFWE Software

NOTICE TO USER: THIS IS A USING CONTRACT NOT A PURCHASING AGREEMENT. PLEASE READ THIS CONTRACT CAREFULLY. THE USING ALL OR ANY PORTION OF THE SOFTWARE MEANS YOU ACCEPT ALL THE TERMS AND CONDITIONS OF THIS AGREEMENT AND YOU AGREE THAT THIS AGREEMENT IS ENFORCEABLE LIKE ANY WRITTEN NEGOTIATED AGREEMENT SIGNED BY YOU. IF YOU DO NOT AGREE, DO NOT USE THIS SOFTWARE. IF YOU ACQUIRED THE SOFTWARE ON TANGIBLE MEDIA (e.g. CD) WITHOUT AN OPPORTUNITY TO REVIEW THIS LICENCE AND YOU DO NOT ACCEPT THIS AGREEMENT, YOU MAY OBTAIN A REFUND OF THE AMOUNT YOU ORIGINALLY PAID IF YOU: (A) DO NOT USE THE SOFTWARE AND (B) RETURN IT, WITH PROOF OF PAYMENT, TO THE LOCATION FROM WHICH IT WAS OBTAINED WITHIN THIRTY (30) DAYS OF THE PURCHASE DATE.

1. Use of Software

Seyeon grants the right of using only. You may install a copy of the Software onto a PDA device or multiple PDAs depending on the license version of PDA program. Software installation on a multiple PDAs must be done within the coverage of software license. If not, you have to buy the same number of copies of the Software as the users of the PDA software.

2. Copyright

You agree that all intellectual properties or/and copyright of the Software in any form (tangible or not tangible) belong to Seyeon and protected by the Korean Copyright Law and International Treaty Provisions. You agree not to modify, adapt, or translate the Software. You also agree not to reverse engineer, decompile, disassemble, or otherwise attempt to discover the source of the Software. You may not make any form (e.g.; CD) of copy of the Software entirely or/and in part without Seyeon's written form of permission.

3. Transfer of Using Right

You may not rent, lease, sublicense, or lend the Software. You may however use former version of the Software in case you upgrade it to new version of the Software providing you may not use new version of the Software and old version of the Software at the same time.

4. Limited Warrants

Seyeon warrants to you that the Software will perform substantially in accordance with the Documentation for the ninety (90) day period following your receipt of the Software. To make warranty claim, you must return the Software to the location where you obtained it along with proof of purchase within such ninety (90) day period. If the Software does not perform substantially in accordance with the Documentation, the entire liability of Seyeon and your exclusive remedy shall be limited to either, at Seyeon's option, the replacement of the Software or the refund of the license fee you paid for the Software. For further warranty information, please contact Seyeon's Customer Support Department.

5. DISCLAIMER OF WARRANTIES

Except for the limited warranty set forth in section 4, Seyeon and its suppliers make no warranties, express, implied, or statutory, as to any other matters, including but not limited to non-infringement of third-party rights, merchantability, or fitness for any particular purpose. Seyeon and its suppliers do not and cannot warrant the performance or results you may obtain by using the Software.

6. Limitation of Liability

In no event will Seyeon and its suppliers be liable to you for any consequential, indirect, incidental, punitive, or special damages, including any lost profits or lost savings, even if a representative of Seyeon or any supplier has been advised of the possibility of such damage, or for any claim by any third party.

7. Governing Law and General Provisions

This Agreement will be governed by the regarding laws in force in Korea. This Agreement shall automatically terminate upon failure by you to comply with its terms, in which event you must destroy all copies of the Software. This Agreement may only be modified by a writing signed by an authorized officer of Seyeon, although Seyeon may vary the terms of this Agreement in connection with the licensing of any Updates to you.

Overview of PocketFWE

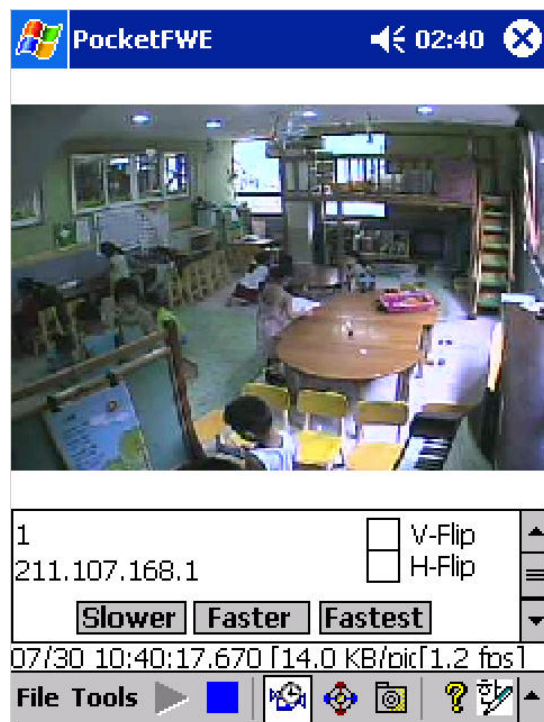
1 Introduction

PocketFWE is a software which is designed to work on Pocket PC (PDA) through which user can view real time live video stream from FlexWATCH™ network camera or video server over wireless network such as Wireless LAN, CDMA and GSM.

Thus, as long as your Pocket PC is connected to wireless network, you can view your facility while you are moving.

Following features are provided by PocketFWE software.

- **Works with only any model of FlexWATCH™ network camera or video server**
- **Register and view up to 20 cameras over the wireless network.**
- **Control video transmission speed**
- **Control PTZ(Pan/Tilt/Zoom) device connected to FlexWATCH™ network camera or video server.**
- **Horizontal and Vertical flip option to change camera direction**
- **Snapshot feature to save important live view and later review.**



2 Key Benefits

Live view on-hand

PocketFWE enables you to view real time live video streams from multiple FlexWATCH™ network camera or video server over wireless network while you are moving as long as your pocket PC is connected to wireless network. Thus, you do not need to stick to stationary PC to monitor your facility.

Snapshot and PTZ control

PocketFWE enables you to make a snapshot important video in the Flash memory of Pocket PC and you can playback. Through PTZ control panel, you can control PTZ device connected to the FlexWATCH™ server while you are moving.

Multiple camera registration

Multiple FlexWATCH™ network camera or video server can be registered in the PocketFWE program and you can easily switch camera to another.

3 Specification

Hardware requirements

- StrongARM 206MHz or above CPU
- 64MB DRAM or above

Operating System

- Pocket PC 2002

Display performance

- Max up to 12fps (352x240 size)

Tested PDA

- COMPAQ iPAQ H3950
- Symbol

Supported Product

- All FlexWATCH network camera and video server series (FW-50A/100A/1100/1200/1150/200A/500A/3400)
- Firmware Version 2.0 or Above

Program Installation

PocketFWE requires License key_code to fully use its features. Thus you are required to get Licensing Key_code from your vendor. If you do not have License Key_code, please contact your local vendor or sales@flexwatch.com for more information.

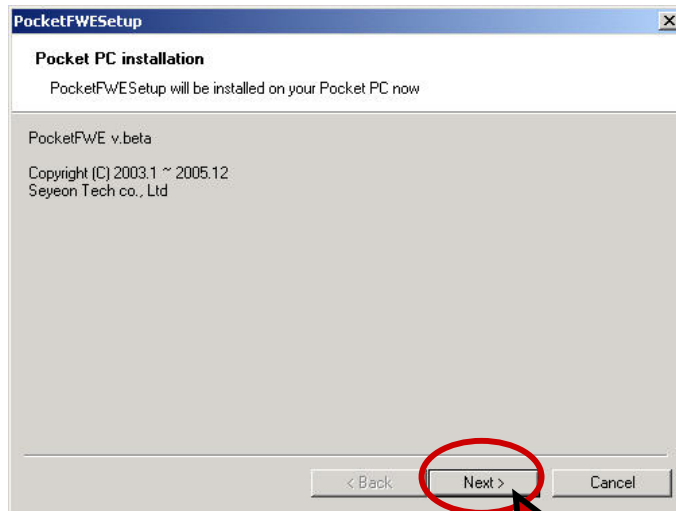
Important!

Technical support from manufacturer to deal with any software problem being used will be provided for the user who bought the software and use legal licensed copy only. E-mail address which was used for software purchase and software registration must be provided to manufacture to get a technical support. Otherwise, no technical support will be provided by manufacturer. Thus, please make sure that you make a note of your e-mail which will be appeared when you register the software in the PDA so that you can get a tech support or any software update note from Manufacturer.

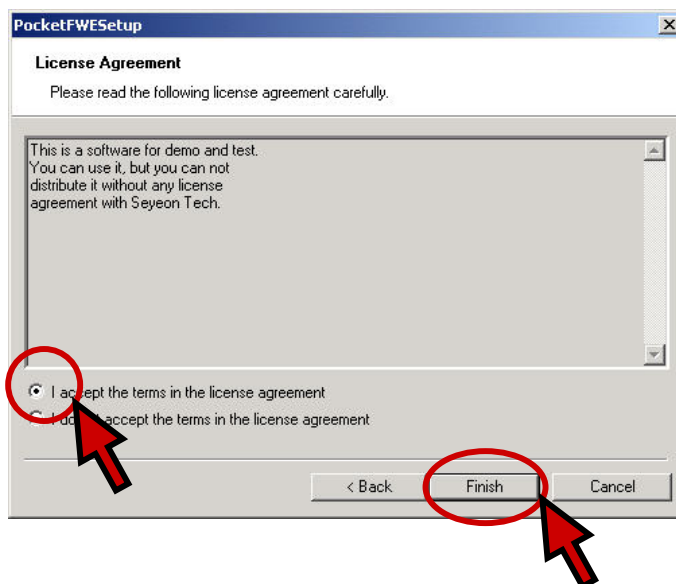
1 PocketFWE Software Installation

Software installation is quite easy and simple, but Please check out following items before starting for the successful installation.

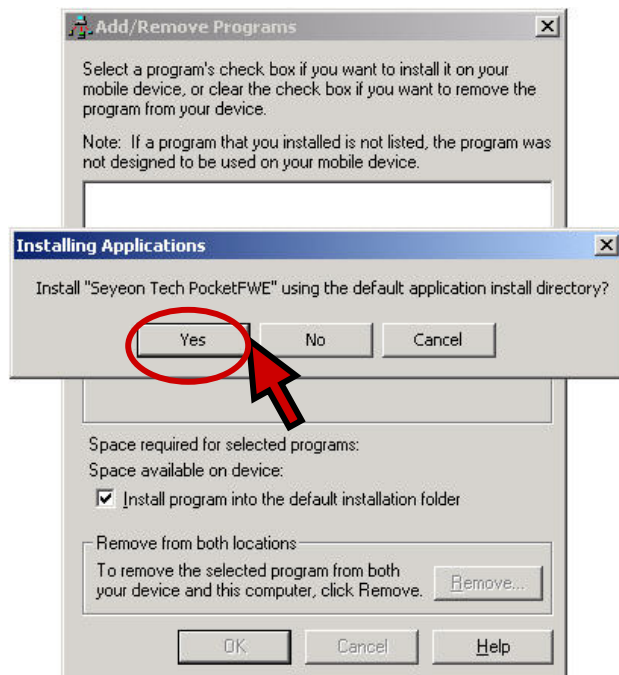
- **ActiveSync must be installed in the PC where PocketFWE program is downloaded.**
 - **PDA is connected to the PC through USB or Serial port connection.**
 - **Make sure that PDA and PC is connected through ActiveSync when PDA is connected to the PC through USB or Serial connection.**
 - **Check out available memory in the PDA for software installation.**
- a) Download software or use the software in the CD and Click Setup.exe file to start installation.



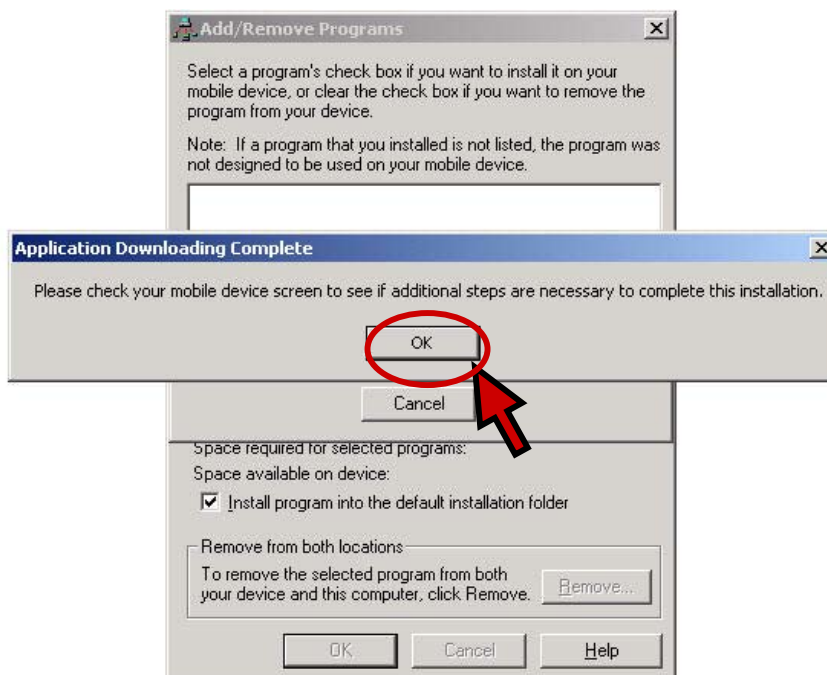
b) Check "**I Accept....**" If you agree with License Agreement and click [Next] button.



c) Press [Yes] button to install PocketFWE program in the default folder. It is strongly recommended not to change the folder.



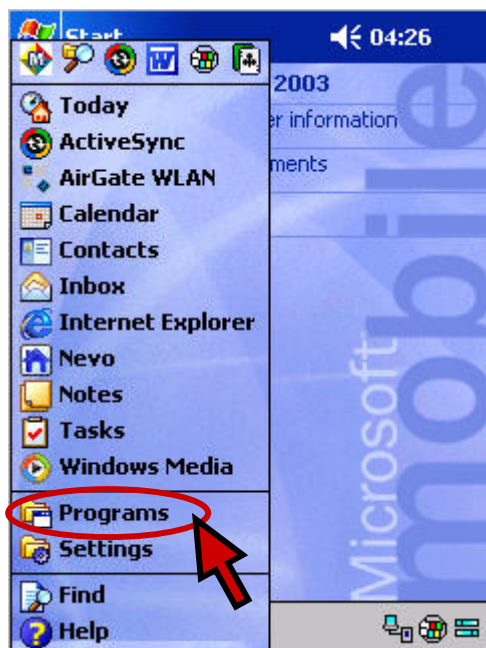
d) Press OK to finish the installation



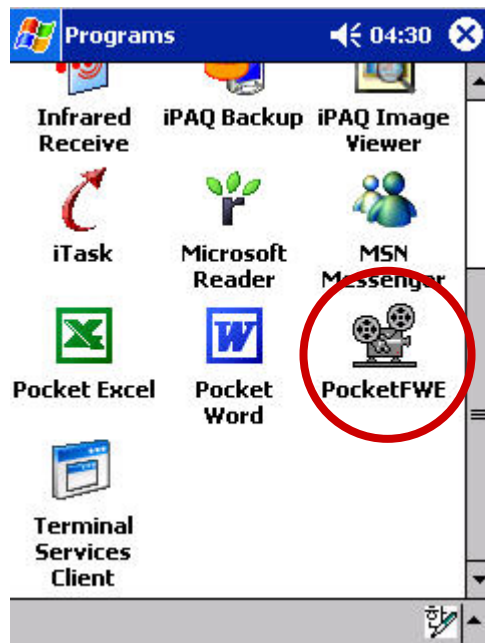
e) Press the [Start] Icon in the PDA.



f) Select [**Programs**] menu.



g) If you can find [**PocketFWE**], the program installation is successfully done.

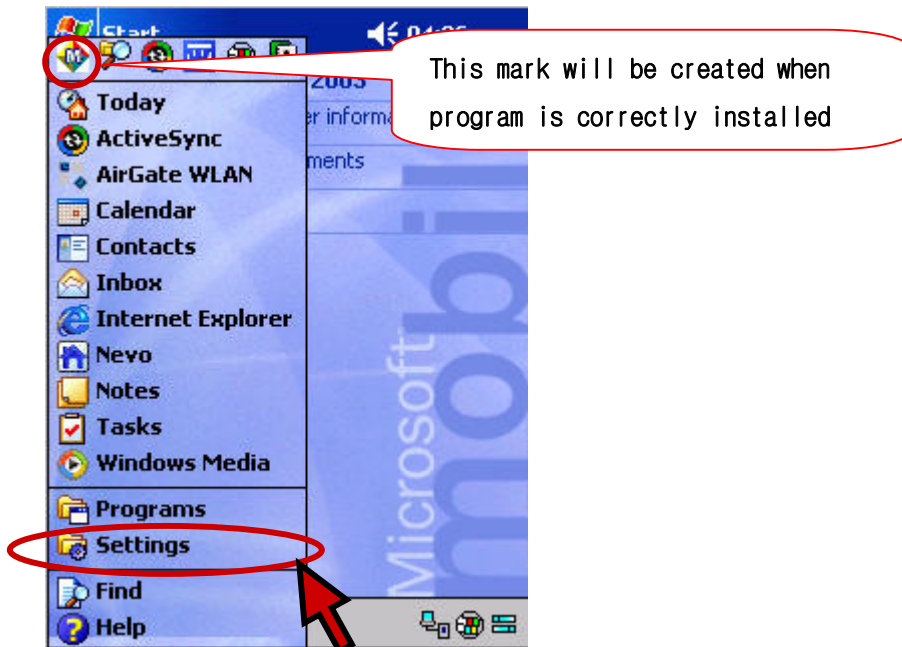


2 PocketFWE Uninstallation

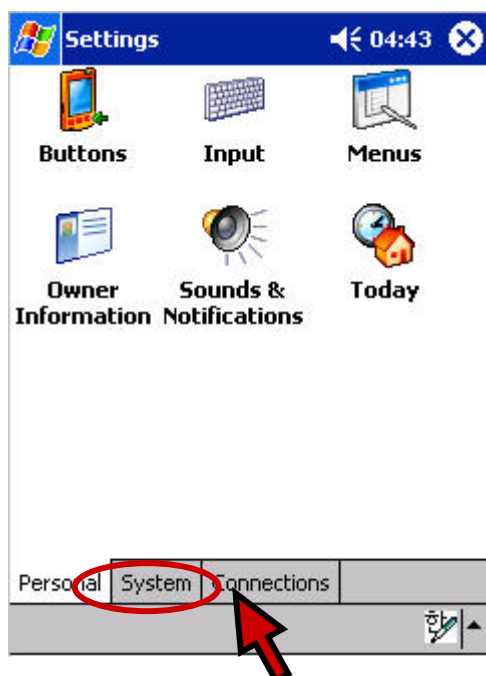
a) Press the [Start] Icon in the PDA.



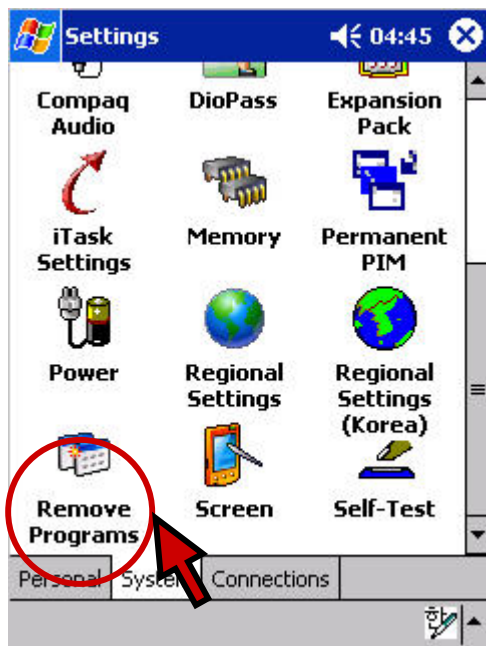
b) Press [Setting] option.



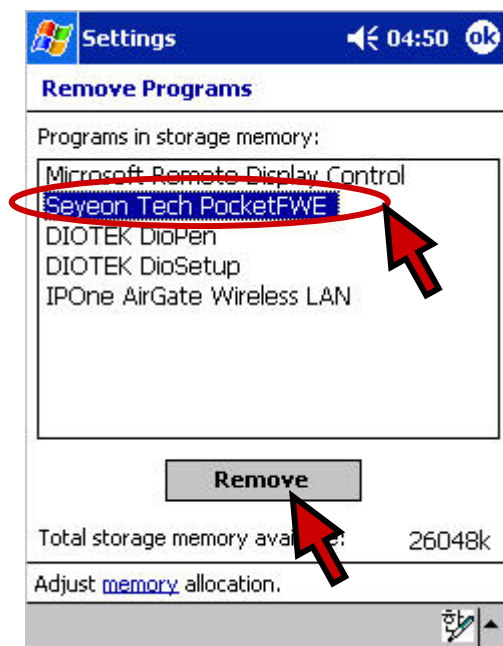
c) Select [System] menu.



d) Select [Remove Program] option.



e) Select "Seyeon Tech PocketFWE" from the installed software and press [Remove] button.



- f) Run the [**Remove Programs**] menu and check out whether "**Seyeon Tech PocketFWE**" is clearly removed from the PDA.



Running the Program

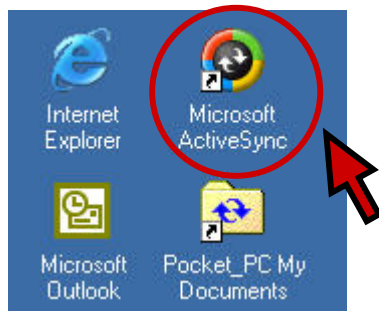
Serial key installation is required to use full features of PDA software. Otherwise only limited features can be supported. **Serial key (Pdakey.txt)** for the software licensing is provided by manufacturer through e-mail when you buy the PocketFWE program. Following is to explain how to upload Serial key into PocketFWE program to license the software.

1 PocketFWE Serial Key Installation

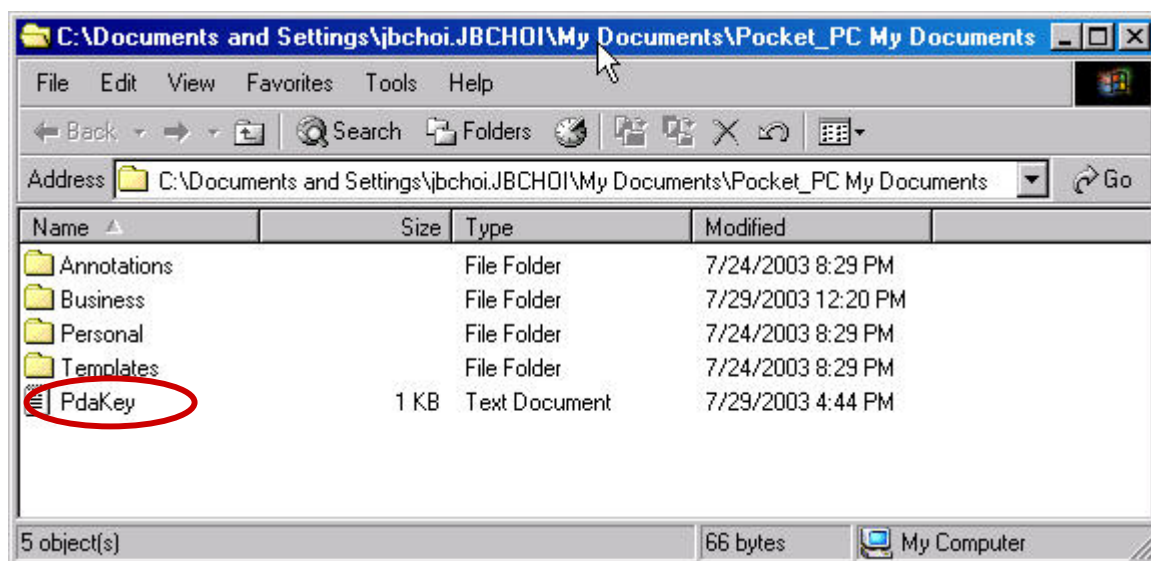
There are two ways to license the software. One is to manually type in Serial key in the software and the other is transferring the Serial key (Pdakey.txt) to PDA. Serial key is provided by manufacturer as file type when you buy the software.

- a) Connect the PDA to PC where Serial key (Pdakey.txt) is saved using USB or Serial cable. Note that Microsoft ActiveSync program is already installed.

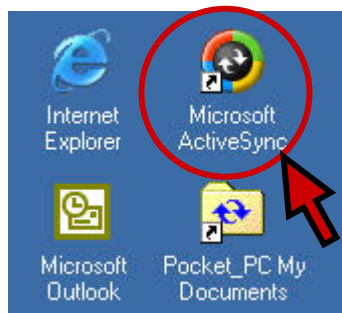
- b) Click "**Pocket_PC My Documents**" folder in the PC. Note that "**Pocket_PC My Documents**" will be automatically created in the PC if you install "**ActiveSync**" which is provided when you buy PDA device.



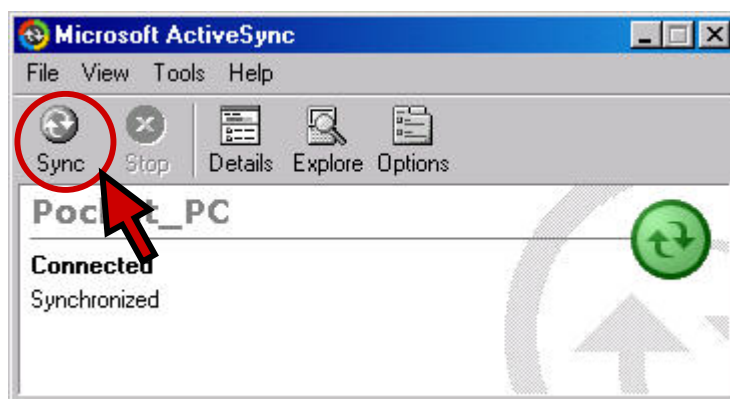
- c) Copy "**PdaKey.txt**" file to "**Pocket_PC My Documents**" folder in the PC. Note that **PdaKey.txt** file is to be provided through e-mail if you buy the software.



- d) Click Microsoft ActiveSync" icon in the PC, if you failed to transfer Serial key to PDA.



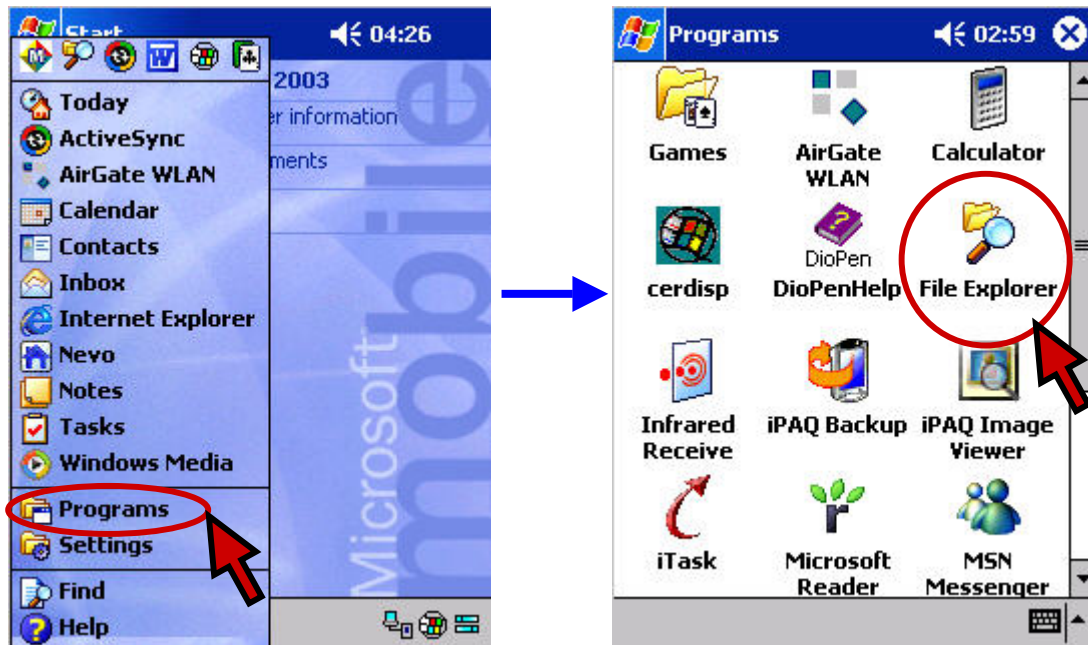
e) Click Sync button in the ActiveSync window to transfer "**PdaKey.txt**".



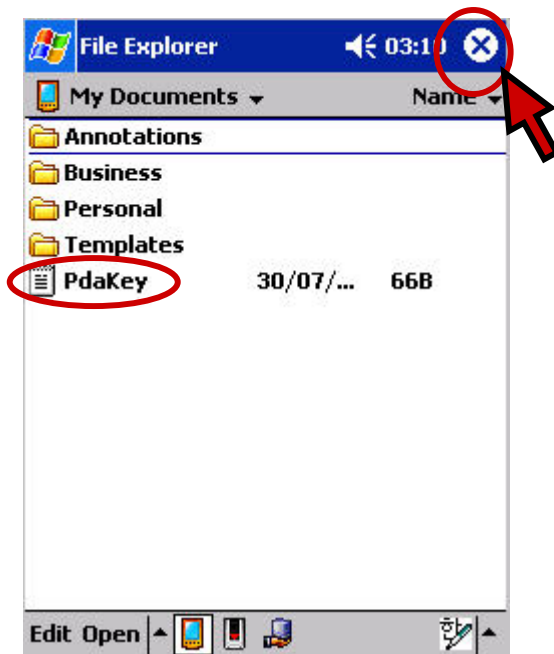
f) Click Start button in the PDA.



g) Select "Programs" and click 'File Explorer.



h) Go to My Document folder in the PDA and check out whether PdaKey.txt file is imported into PDA device as follow. And close the window.



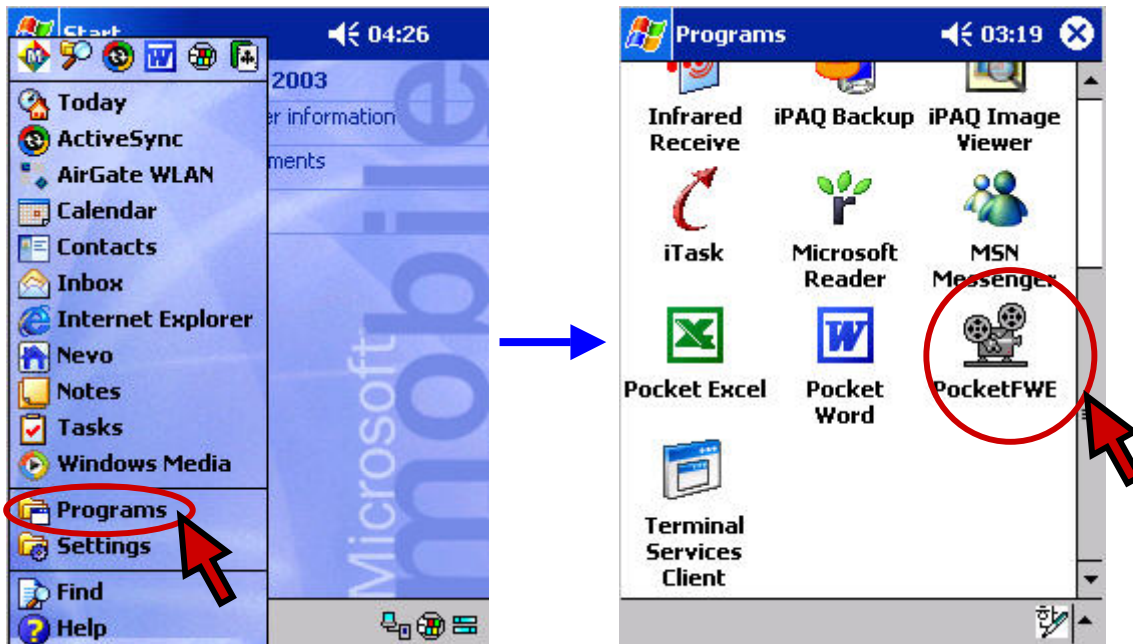
2 Serial Key Registration

Once Serial key is uploaded into PDA, you need to register Serial key into PocketFWE software to validate your license.

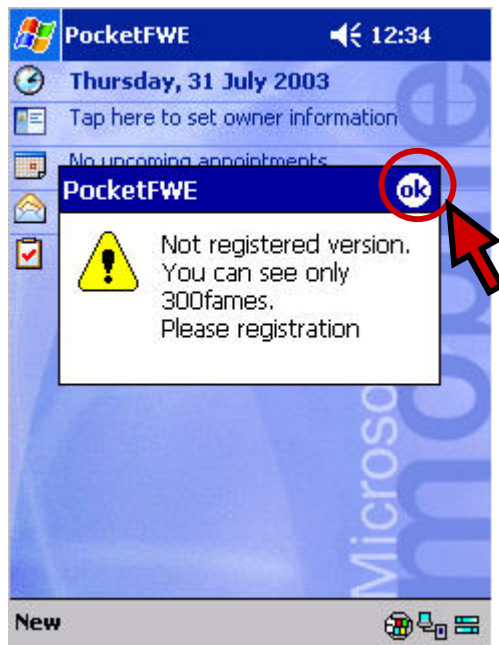
- a) Click Start button from the main screen on the PDA.



- b) Select "Programs" menu and click "PocketFWE" to run the program.



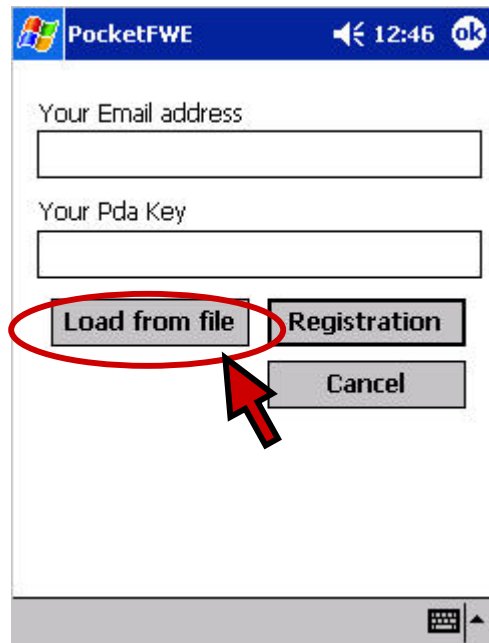
- c) Following Warning message will come up, if software has not been licensed. Click OK button to go forward.



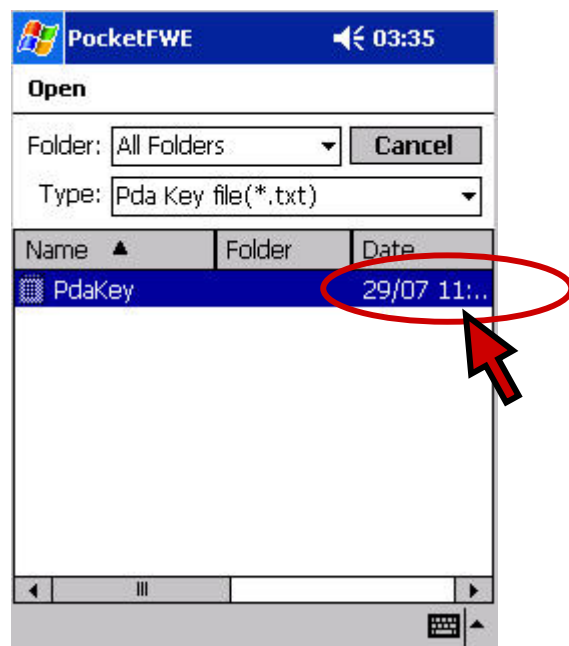
- d) Click "**File**" option from the main screen of PocketFWE program and select "**Registration**" menu.



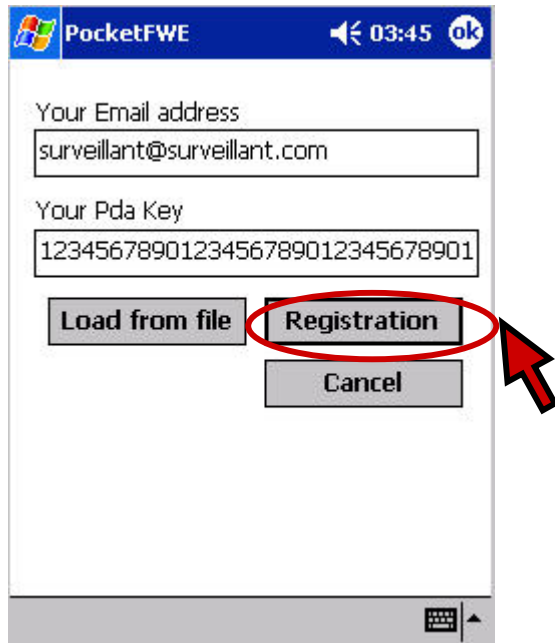
e) Click "**Load from file**" to import Serial Key copied from the PC to PDA.



Following "**Open**" window will be shown. Click "**PdaKey.txt**" file to import.



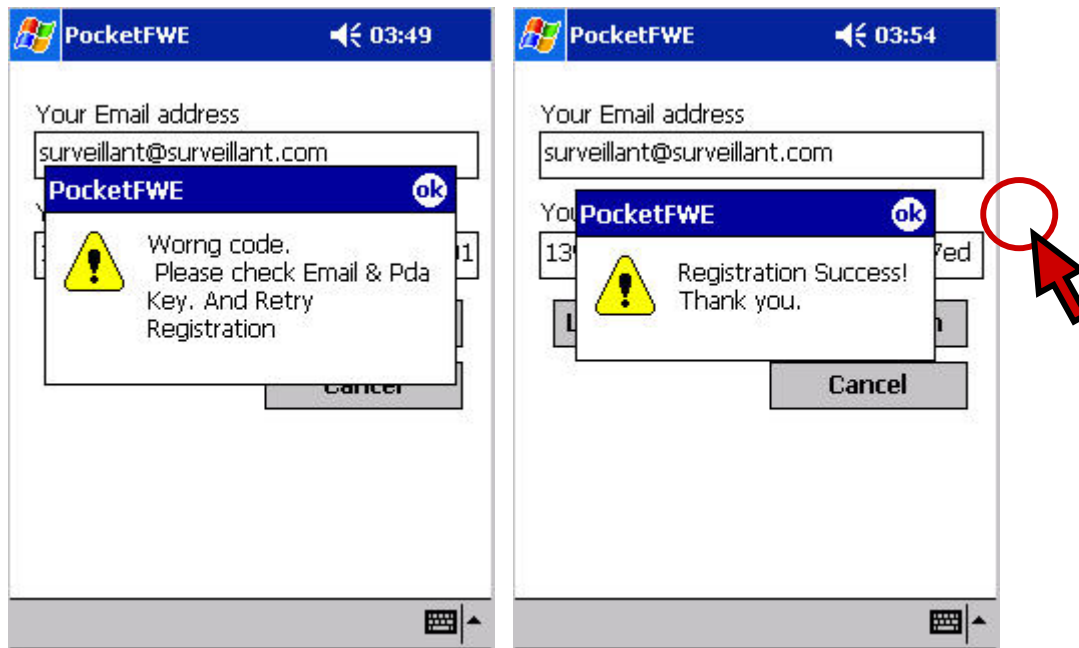
- f) Your e-mail and Serial Key (PdaKey) will be automatically imported into PocketFWE program. Please "Registration" button.



Important!

Technical support from manufacturer to deal with any software problem being used will be provided for the user who bought the software and use legal licensed copy only. E-mail address which was used for software purchase and software registration must be provided to manufacture to get a technical support. Otherwise, no technical support will be provided by manufacturer. Thus, please make sure that you make a note of your e-mail which will be appeared when your register the software in the PDA so that you can get a tech support or any software update note from Manufacturer.

- g) If registration is successfully done, click OK button to exit.
If you fail to register Serial Key, please try again and if no success at all, please contact your local vendor to get right serial key.



a) Failed

b) Success

Server Registration and Camera view

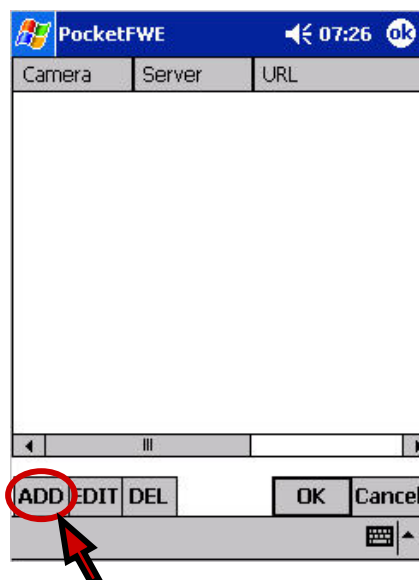
1 FlexWATCH server registration

Multiple FlexWATCH™ network camera and video servers can be registered in the software and you can view live video by selecting camera from the registered list.

a) Click "File" menu and click "Select site" to start server registration.



b) Click "ADD" button.

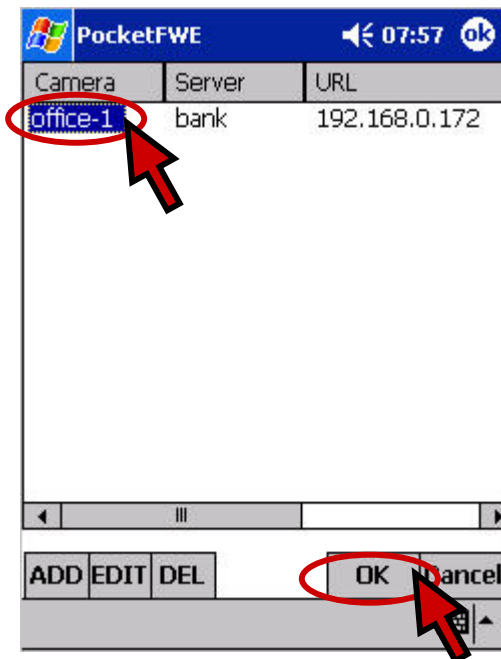


- c) Input right information in the server registration field using by using Electrical Key board and click OK button.

Note that registration is for respective camera. Thus, if multiple cameras are connected to multi channel server, you need to register one by one.

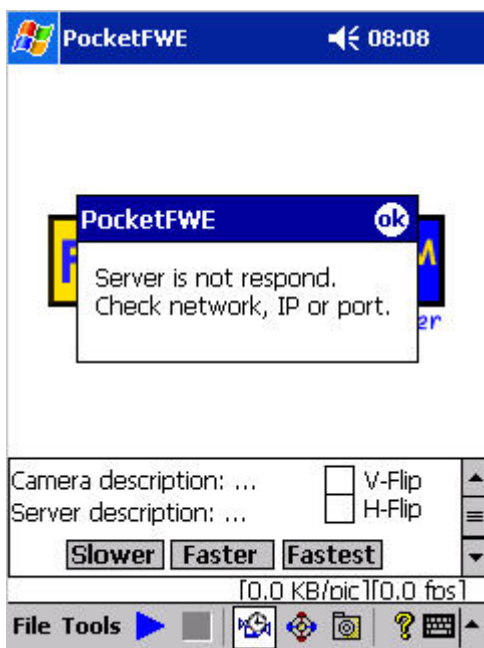
Item	Description
Server Name	FlexWATCH™ Server Name
Camera Name	User Definable camera name
URL	IP address of Domain name of FlexWATCH™ server
HTTP Port	HTTP port of FlexWATCH™server. Default port number is 80. If you have not manually changed, just type in 80.
Camera #	Number of camera, if more than 1 camera is connected to the server.
ID	Access ID for FlexWATCH™ server.
PASSWORD	Access PASSWORD for FlexWATCH™ server.

- d) Click Camera from the registered camera to view live video. To register more camera, click **"ADD"** button



Following message will come up, if registration is incorrectly done.

If registration was successfully done, FlexWATCH™ logo will come up.



a) Registration Fail



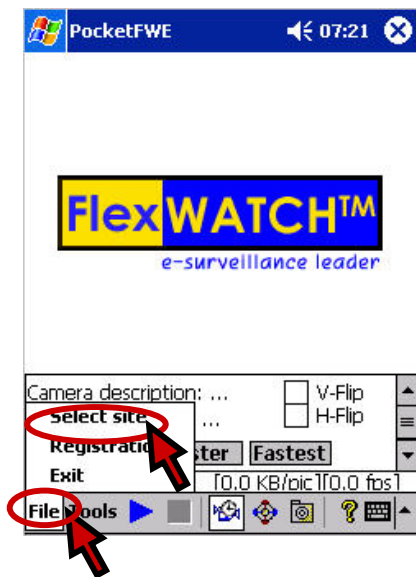
b) Successful Registration

2 View Live video

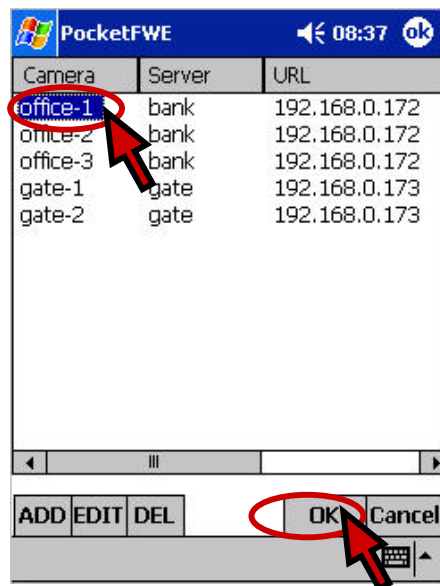
2.1 Running the camera

Once FlexWATCH server is successfully registered in the PocketFWE software, you can view live video stream through PDA.

- a) Run PocketFWE program and click **"File"** in the bottom of the program and select **"Select site"** option.



- b) Click camera from the registered camera list and click **"OK"** button.



c) Selected camera and server name is displayed on the screen.



office-1: Camera Name

bank: Server Name

2.2 Camera Control

Following features are provided to control camera.

- **Frame rate control**
- **Camera Direction change**
- **Image Size Control**
- **PTZ (Pan/Tilt/Zoom) control**

2.2.1 Frame Rate Control

Display frame rate is adjustable using frame rate control option.

Click speed control option menu in the screen. Slower, Faster and Fastest options are provided.



①

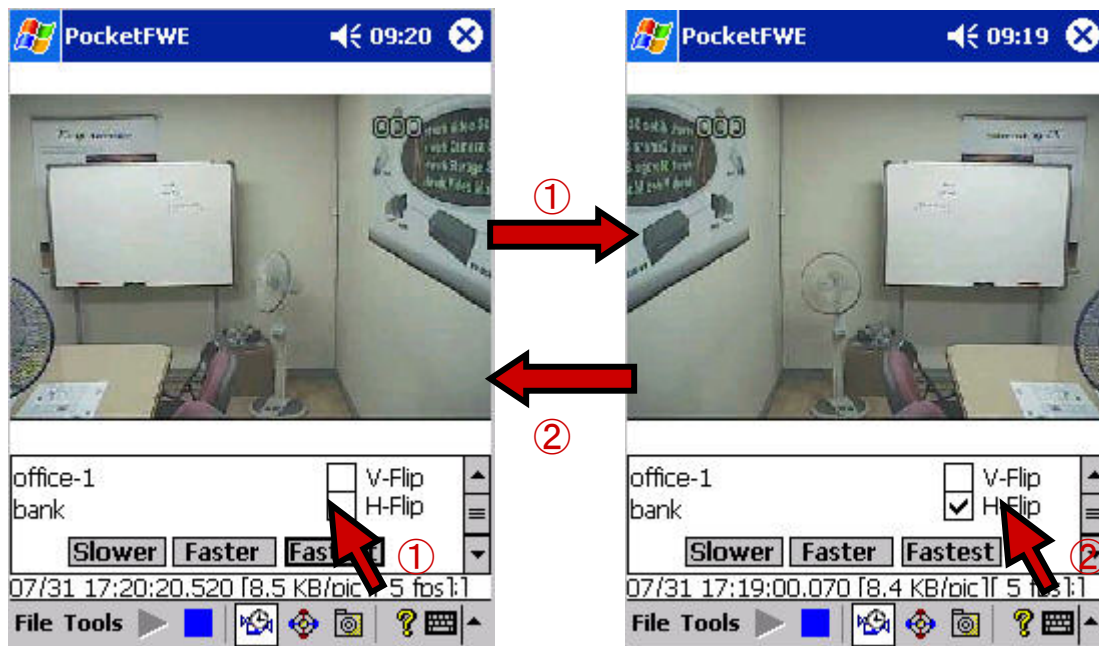
②

③

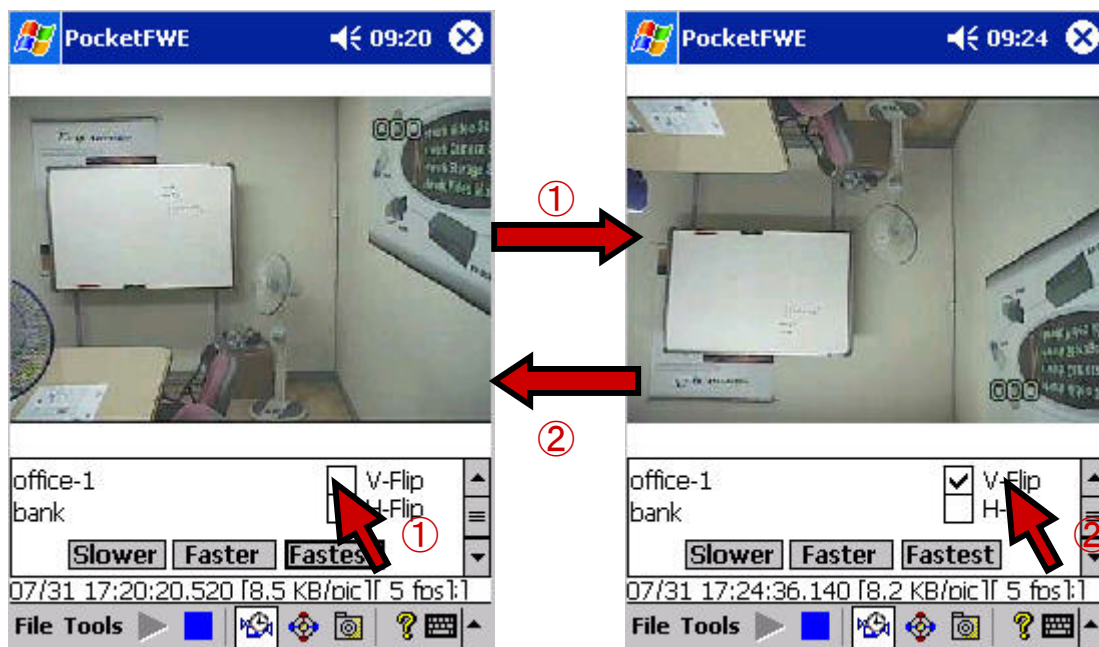
2.2.2 Camera Direction change

Camera direction can be adjustable using Vertical flip (V-Flip) and Horizontal Flip (H-Flip) option. This is a useful tool when camera is mounted on the ceiling or desk in a reverse way.

Click "**H-Flip**" to change the camera direction.



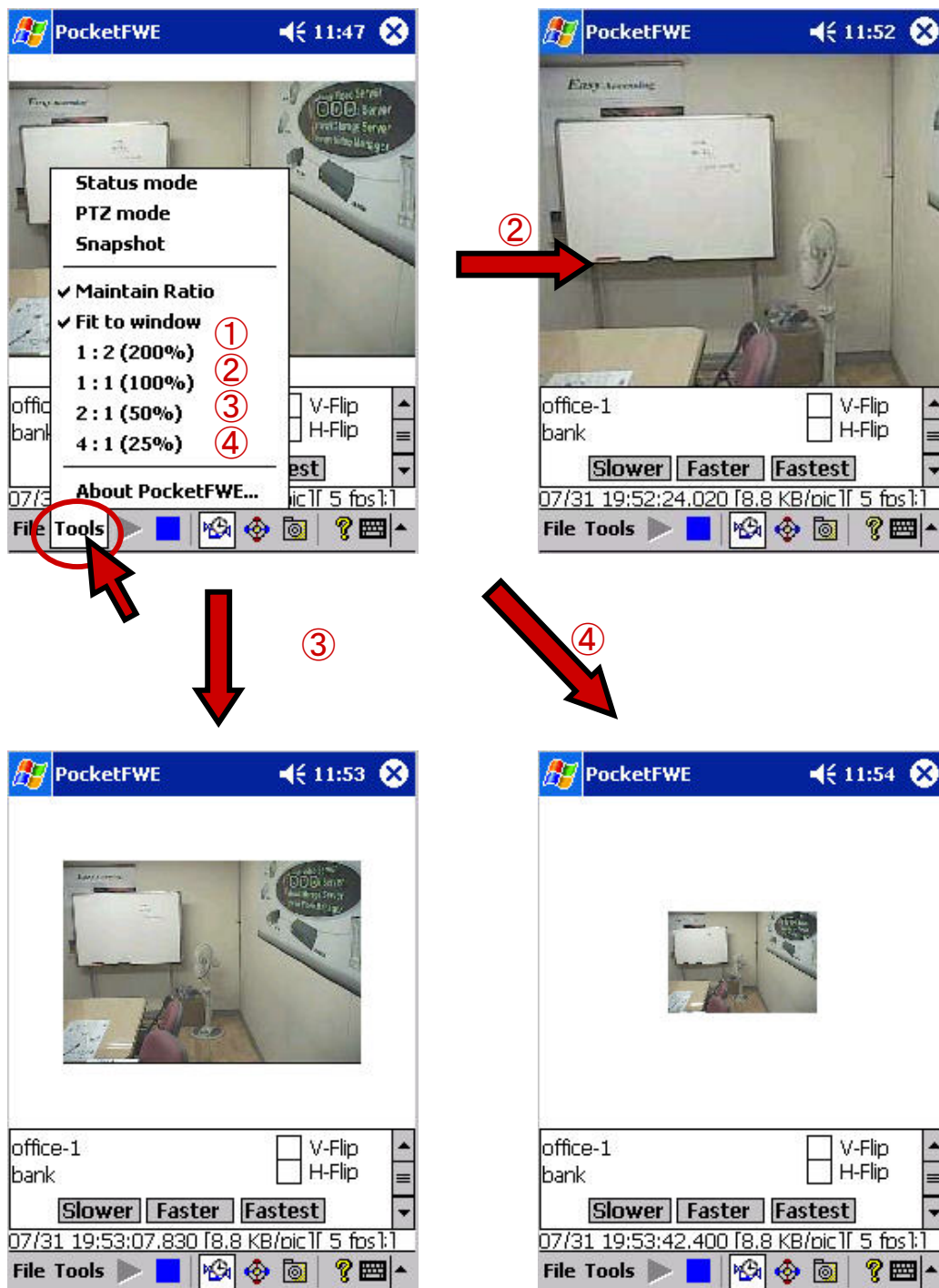
Click "**V-Flip**" to get the image upside down.



2.2.3 Image size change

You can adjust displayed image size. Different size options are provided.

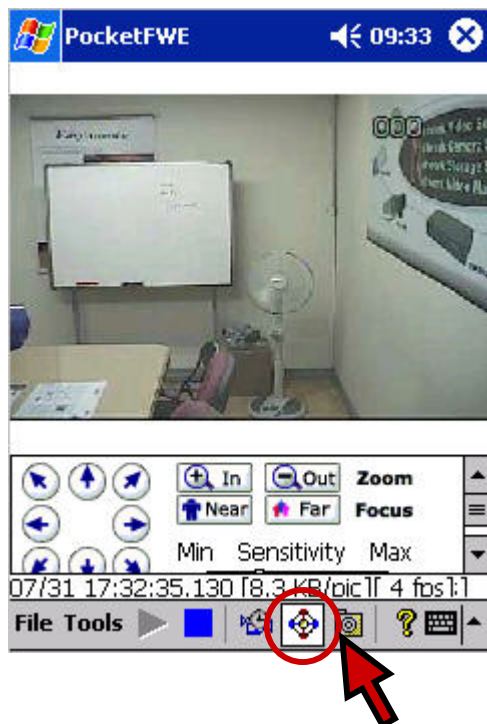
- a) Click "Tools" menu on the bottom of the screen.
- b) Select



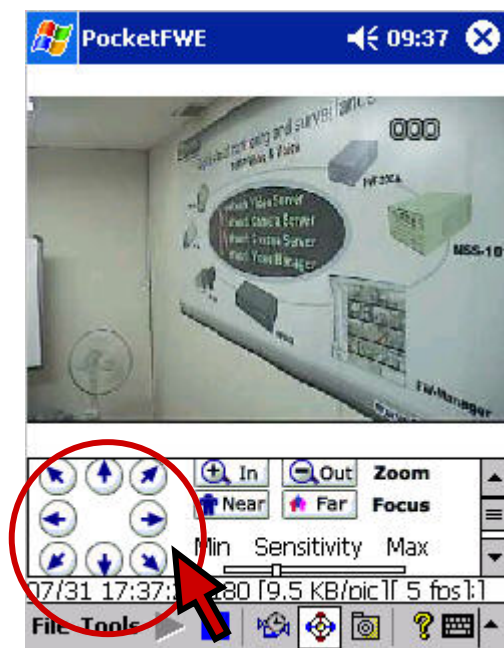
2.2.4 PTZ(Pan/Tilt/Zoom) control

PTZ control function is provided by PocketFWE software and you can control PTZ device connected to the FlexWATCH™ server through PDA.

a) Click PTZ control Icon from the main screen.

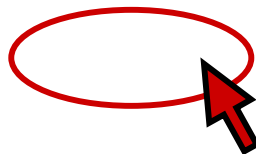


b) Click PTZ direction control panel to move PTZ device.



PTZ sensitivity is to set the angle of movement per click. Adjust this option and set the right value. Depending on the PTZ device angle of movement is different.

Note that PTZ preset function or any other features are not provided from PDA software.



Recording and Playback

Using snapshot feature you can save snapshot PocketFWE and playback save video in the Flash memory.

The number of video frame to be saved in the PDA depends on the memory available in the PDA. You can find file size from the software and calculate number of frame by referring available memory in the PDA.

1 Recording

Video will be saved in the following directory

[My Device\My Documents\Personal\Mobile FEW\Camera Name\Date] and Hour\Minutes\ Sec(1/1000) time tag will be attached.

Note that video clip will be saved with camera name only, not with server name.

- a) Click Snapshot Icon in the tool bar menu to run Snapshot function.



- b) Click "Snapshot" ICON in the main screen to save the video.



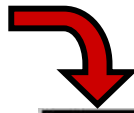
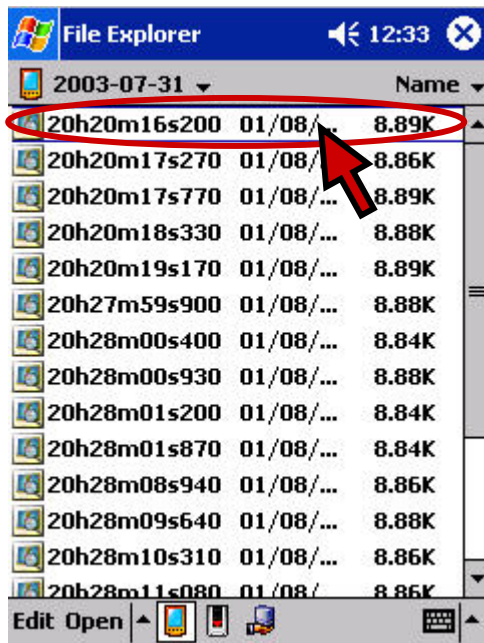
2 Playback of archived video

You can playback archived video in the PDA. No specific software is required to playback archived video clip.

- Click File Explorer and get into "**Mobile FEW**" which is automatically created by PocketFWE under personal folder of PDA.
- Select the camera and click video clip. Note that video search can be done for the respective camera regardless FlexWATCH™ server name.

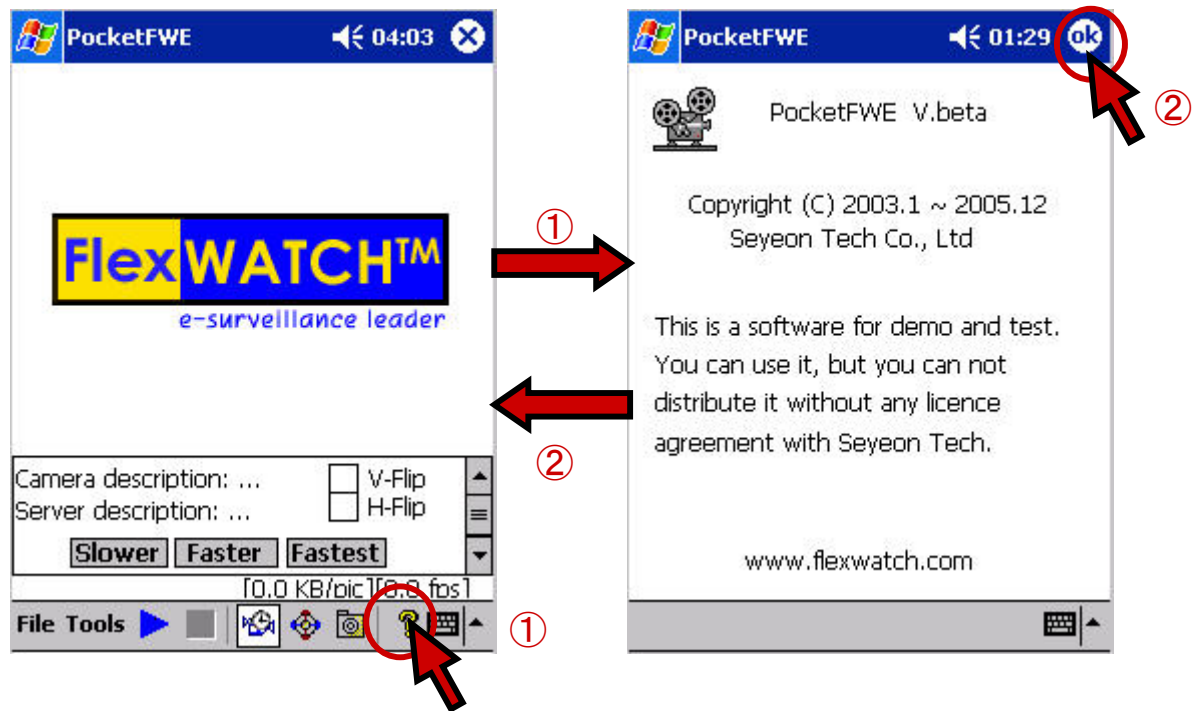


click the Video clip based on time information and view archived video. Unlike PC program, you need to view archived video clip one by one.



PocketFWE information

You can check out Version of software by clicking "?" mark in the program.



Trouble Shooting

Followings are basic trouble shooting guide to properly run the program. If you encounter any other problem, please contact your local vendor or FlexWATCH support@flexwatch.com.

Symptom : "Not registered version..." comes up and program is shut down.

Remedy : Program registration with Serial Key (PdaKey.txt) is required. If you do not have it, please contact your local vendor or FlexWATCH support@flexwatch.com

Symptom : Software registration can not be done.

Remedy : Serial Key (PdaKey.txt) file might be corrupted. In such a case, please try to register by manually type in Serial key.

Symptom : Server and Camera registration can not be done.

Remedy : Check out whether FlexWATCH™ server is connected to the network and PDA is also on-line status. Otherwise no registration can be done. Also check out Server IP address, access ID and Password.

Symptom : No video can be viewed although server registration is correctly done.

Remedy : Check out whether camera can be viewed from the web browser in the Desktop PC. If no video can be seen, check out server status and connected Camera status.

Symptom : Actual display frame rate is too slow.

Remedy : a. Check out whether PDA spec meets as recommended. Lower performance PDA produce lower display performance.

b. Check out available bandwidth between PDA and FlexWATCH™ server whether enough bandwidth are being provided.

c. Check out whether multiple users are connected to FlexWATCH™ server simultaneously. The more the concurrent user, the slower the video frame rate.

Symptom : Snapshot function does not work.

Remedy : Check out available memory space in the PDA

Symptom : PTZ control can not be done from PocketFWE program.

Remedy : Try to control PTZ through PC web browser to check out PTZ functionality. As long as PTZ can be controlled from PC web browser, it will work.