

VPS-300V

Video Presentation System



Version: 2.0

Date: Nov. 3, 2009

Table of Contents

1. Overview.....	3
2. Specification.....	5
3. Quick Start.....	6
4. Client Utility.....	9
4.1. Starting Program.....	9
4.2. Login.....	10
4.3. Buttons Description.....	10
4.4. Start/Stop Presentation.....	12
4.5. Start/Stop Playing Video.....	12
4.6. Open Admin Web Page.....	13
4.7. Searching Server.....	14
4.8. Repeat.....	14
4.9. Make PnS Token.....	15
4.10. System Information.....	16
4.11. About.....	17
4.12. Exit Program.....	18
5. Web Management.....	18
5.1. Home Page.....	18
5.2. Download Software.....	19
5.3. Conference Control.....	20
5.4. Login Web Admin.....	22
5.5. System Status.....	22
5.6. Network Setup.....	23
5.7. Projection Setup.....	25
5.8. Change Passwords.....	26
5.9. Reset to Default.....	27
5.10. Firmware Upgrade.....	28
5.11. Reboot System.....	29
5.12. Logout.....	30
6. [Appendix].....	31
6.1 Accessories.....	31
6.2 Packaging Specification.....	31
6.3 Wall Mount Instructions (Optional).....	32

1. Overview

VPS-300V is an easy installation, convenient operation and user friendly projecting device. It turns your current Projector into a high-end Projector. With VPS-300V, your Projector becomes a wireless device and PC/Notebooks will be easier to project screen to Projector.

■ Plug & Play

VPS is a plug-and-play device which is easy to install and connect with. Any Notebooks/PCs with built-in Centrino or Wi-Fi card can easily download the wireless projection software and connect to VPS-300V.

■ Flexibility

Compatible to all kinds of projectors, VPS-300V uses wire-line or wireless connection, to display presentations. Instantly project your screen to the projector with just one mouse click. Nor more cable swapping hassles.

■ Performance

VPS-300V is able to deliver real time animation screens for up to 1280x768 resolutions in 24-bit color depth. It also provides friendly web-based administrating UI for easy configuration and wireless security setups.

■ Security

Support Login code to protect other users from accessing presentation contents. During presentation, screen images can also be protected by WEP 64/128 encryption.

■ Conference control

Supporting multi-users to switch presentation, any member at the conference can easily login to server and switch the computer's screen to Projector without moving the computer to Projector.

■ Intelligent searching function

After perform VPS-300V utility, the utility will automatically search all the VPS which are available and within the wireless LAN cover range. Users don't need to do any other setting, without worrying about the operation procedures.

➤ **Features**

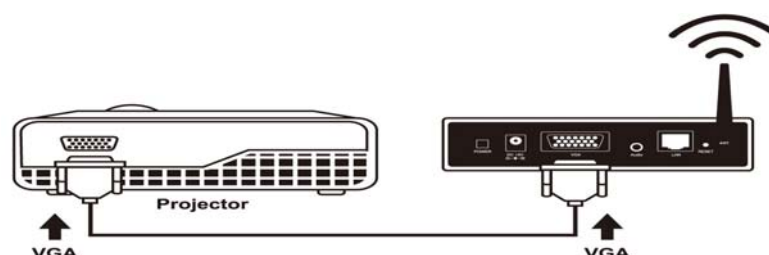
- Wireless presentation, no more cable swapping.
- Video projection, projecting your video file on the screen through WLAN/LAN.
- Compatible to all projectors with standard VGA connectors.
- One-Click to switch presenters' displays.
- Real time display for PowerPoint presentations, images and applications.
- Supports output resolutions up to 1280x768 with 24-bit color.
- No installation CD required, software is directly downloaded from the device.
- Provide session security login and wireless WEP key to protect presentation contents.
- Conference control function is provided for the host to moderate a meeting.
- Provide friendly web-based user interface for easy configuration.
- Support static-IP and DHCP server.

2.Specification

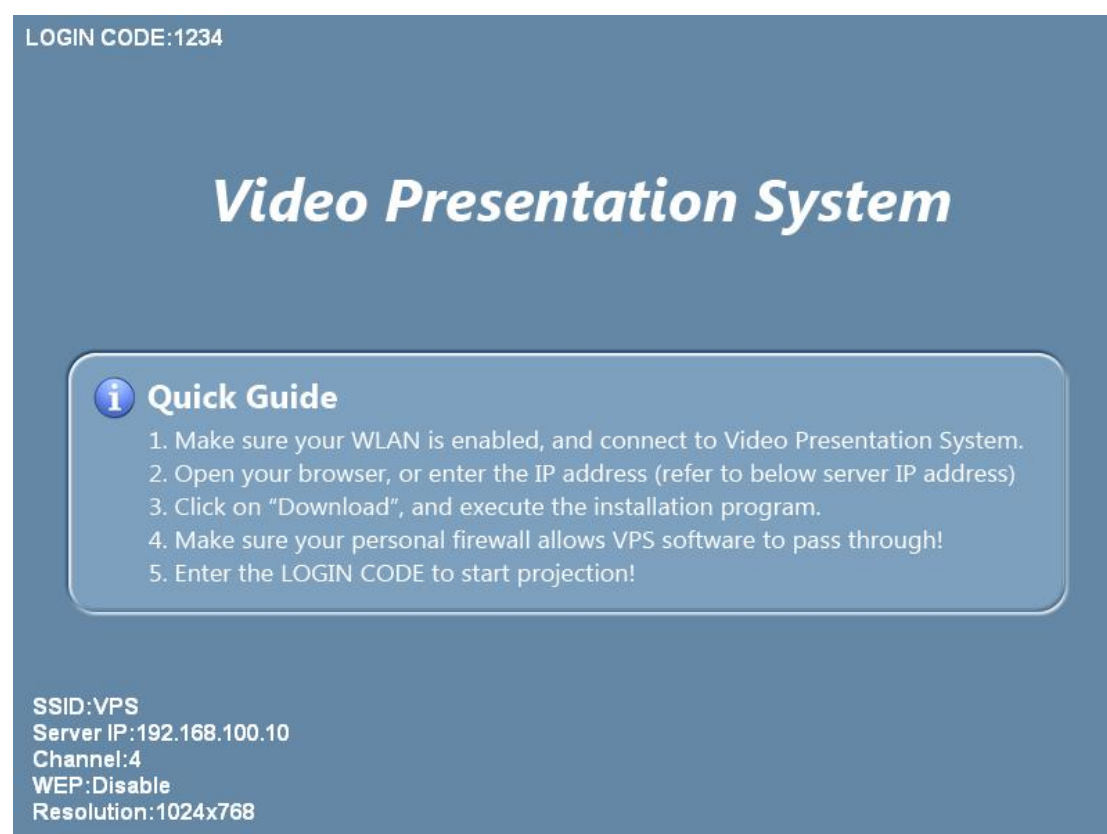
Dimension	117mm(W) x 140mm(D) x 27mm(H)
Weight	279g
Wireless Standards	IEEE 802.11g
LAN Standards	IEEE 802.3u
Data Rate	Wireless: up to 54Mbps LAN: 10/100 Mbps with auto MDI/MDIX
Wireless Channels	11 (US, Canada) 13 (Europe) 14 (Japan)
Protocol	TCP/IP
IP Configuration	Automatic: DHCP Manual: static IP address
Management	Web-based Configuration
Security	IEEE Standard 64/128 bit WEP
Antenna	Detachable antenna with SMA connector
Transmission Power	2dBi external dipole antenna
Receiving Sensitivity	– 65dBm @ 54Mbps – 80dBm @ 11Mbps at 10-5 BER
Wireless Link Coverage	Up to 300 feet/100 meters, depends on environment
Video Streaming	MPEG1/2/4, HD Video Support
Supported Vide Format	MPEG1/MPEG2/MPEG4(DivX, Xvid)/WMV9
Supported PC/NB Resolution Color Depth	16/32 bit color depth
Supported PC/NB Resolution	SVGA (800x600), XGA (1024x768), WXGA (1280x768)
Supported Output Resolution	SVGA (800x600). XGA (1024x768), WXGA (1280x768)
Supported Operation System	Windows Vista/XP/2003/2000
Power	DC5V, 2.5A
Interfaces	15-pin VGA, RJ-45, Power switch, Reset button, Stereo phone jack, Audio output
Environmental conditions	Operating temperature: 0~40°C

3. Quick Start

- 1) Connect projector VGA cable to VPS-300V box VGA connector and turn on projector power.



- 2) Turn on VPS box.
 - ◆ When Projector shows the default menu on the screen as below, it indicates the VPS box is ready now.



- 3) Make sure your PC WLAN is enabled already, and connect your PC with VPS box.
- 4) Open your browser and it will redirect to VPS main page automatically, or

you can enter the IP address to access the VPS web home page.

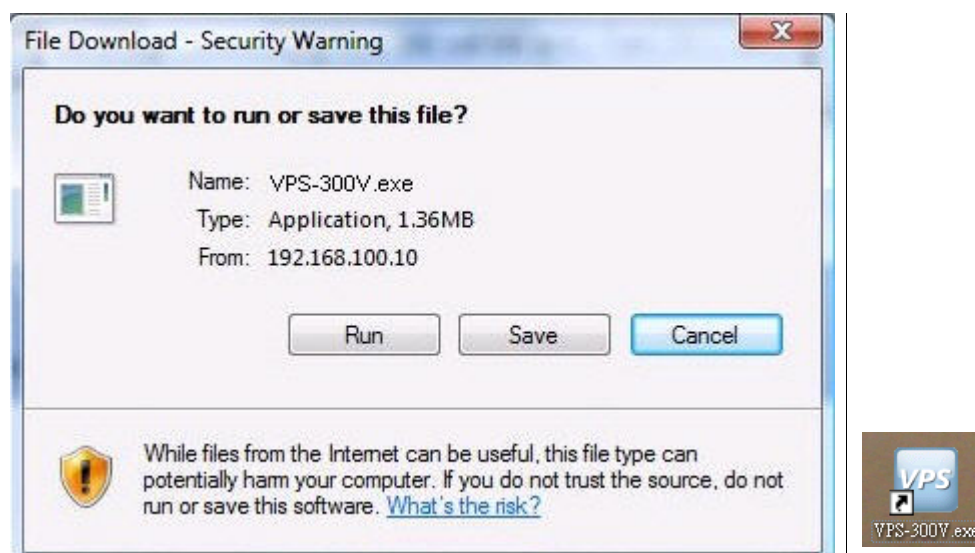
- ◆ The default IP address of VPS is **192.168.100.10** or refers to the IP address shown on the left corner of projector screen.



5) Click on “**Download Software**”, and execute the installation program.

- ◆ After installing the program, you will see VPS shortcut on your PC desktop.





6) Make sure your personal firewall allows VPS software to pass through.

7) Enter the **LOGIN CODE** and

- ◆ You can see the login code on the projector screen



8) Click the **"Play"** button to start projection!

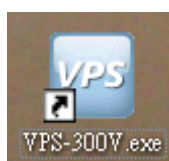


4. Client Utility

4.1. Starting Program

After you download VPS-300V Windows program via web page successfully, then follow below steps to start.

- 1) Click VPS-300V icon to execute the program.



- 2) Program start to search for VPS box automatically,
- 3) If VPS box founded then **"Login Code"** dialog box will be pop up on the PC screen.
- 4) If not, will enter to disconnected state and **"Reconnect"** button shown for you to try again.

- **Searching for VPS box**



- **VPS box is founded and enter login code to start.**



- **Failed to find VPS box**



4.2. Login

- 1) After "Login Code" dialog box shown, enter login code to start presentation.
- 2) You can see the login code shown on the projector screen.



4.3. Buttons Description

- 1) After login successfully, you will see main UI of VPS application.



2) Click following buttons to manipulate VPS Application.



Presentation Mode



Video Mode



Start projecting



Pause projecting



Stop projecting



Refresh projecting screen



Server Login Code



While projecting in progress, this icon is blinking



Start Playing Video



Stop Playing Video



Pause Playing video



Open Video File



Audio volume ON.



Audio volume OFF



Audio volume strength bar



Video time bar



While playing video, it will be blinking



Function menu



Minimize the program



Exit the program

4.4. Start/Stop Presentation



Click to start presentation.



Click to stop presentation.



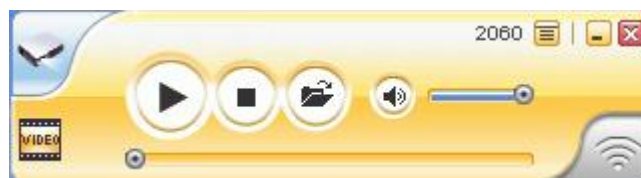
Click to pause presentation, that will hide any activities of your PC screen. Once you click "Play" button again, screen projection will be resumed.



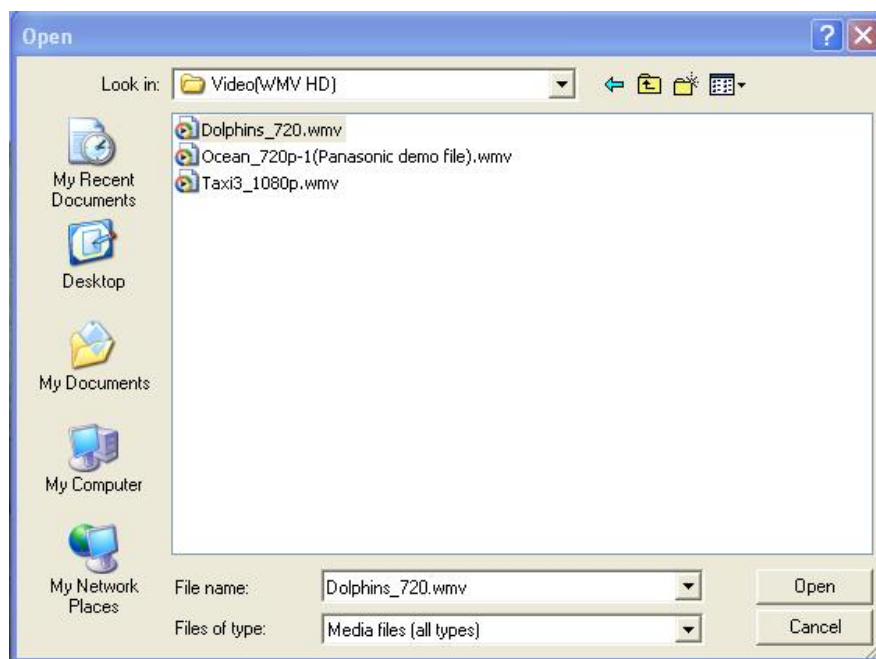
4.5. Start/Stop Playing Video



Click to switch to Video Mode.




Click  to open the video file and submit to play it.



* Supported Video Format: MPG, MPEG, DAT, VOB, WMV9, ASF.

4.6. Open Admin Web Page

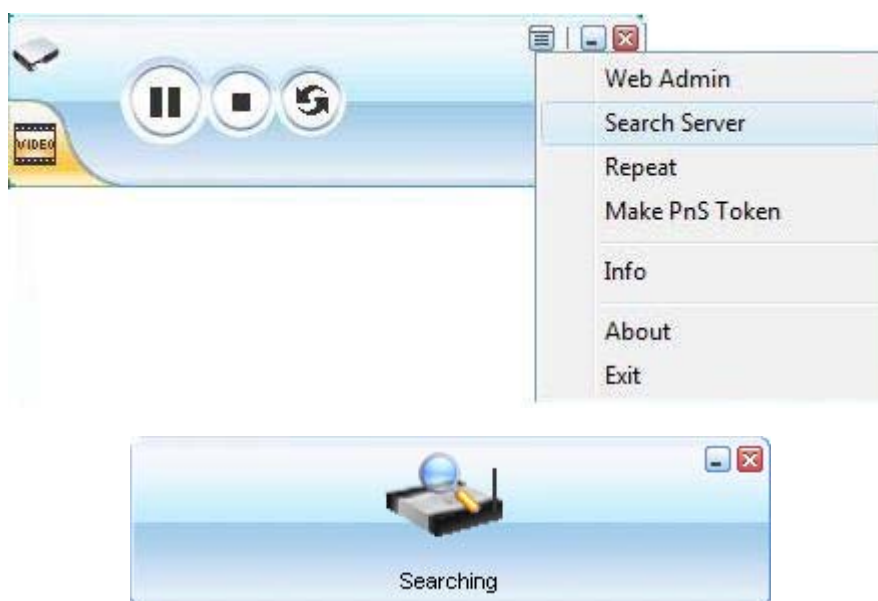
Click  to open function menu and select "**Web Admin**" management web page. The web page detailed functions will be described on next chapter.





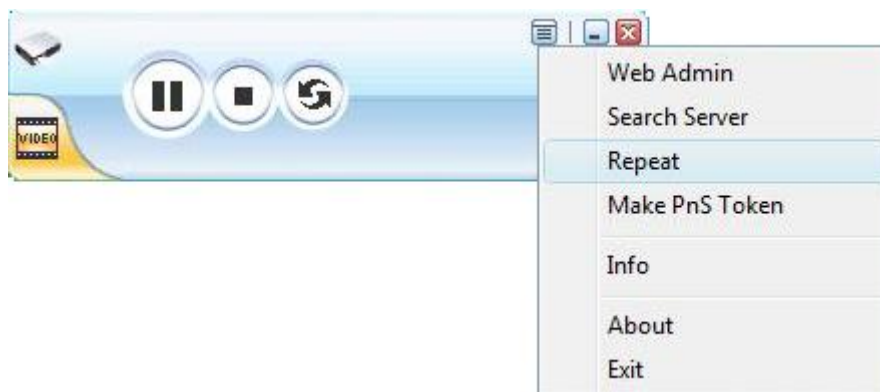
4.7. Searching Server

Click "**Search Server**" to search for VPS box again.



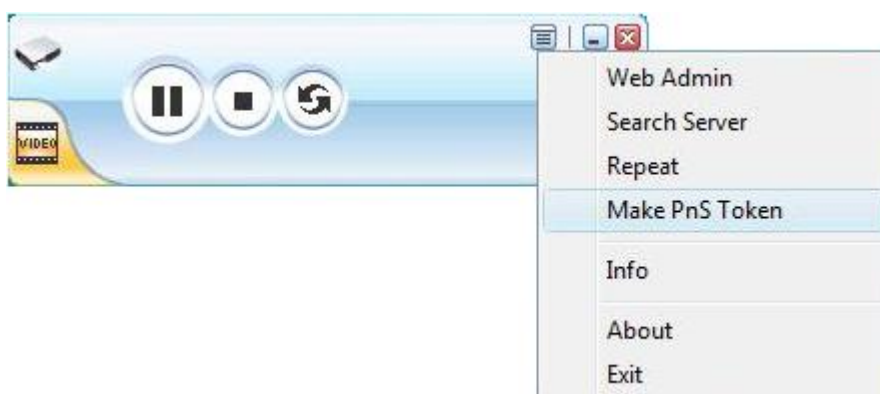
4.8. Repeat

Click "Repeat" to enable/disable video repeat capability.



4.9. Make PnS Token

Click "Make PnS Token" to make a USB PnS Token.



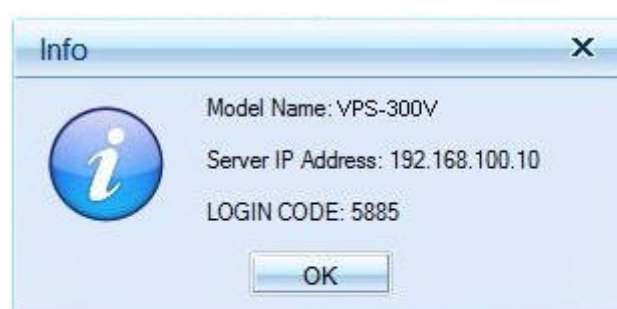
USB Auto Setup Wizard:





4.10. System Information


Click **"Info"** to show system information. It includes product model name, IP address and other information.



4.11. About



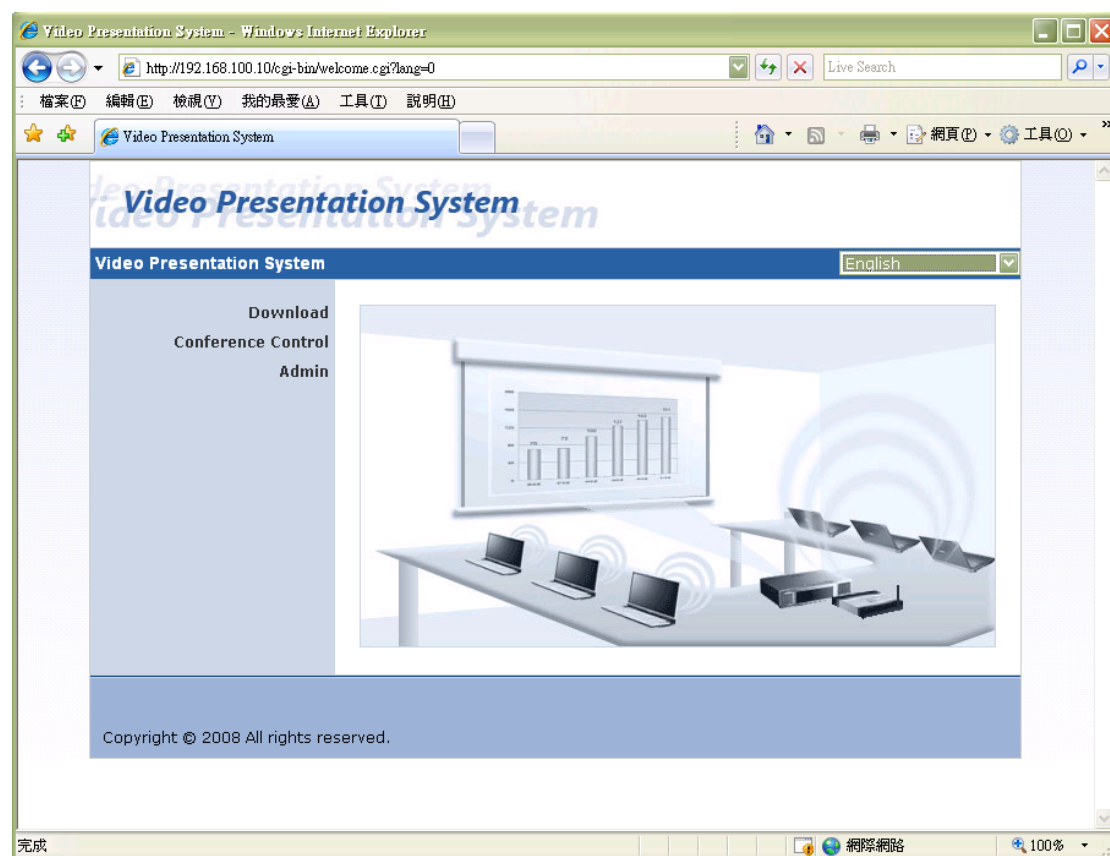
4.12. Exit Program

Click  to exit this program.

5. Web Management

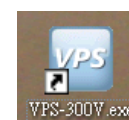
5.1. Home Page

1. Make sure your PC connect to VPS box successfully.
2. Open your browser, it will enter VPS-300V home page automatically.
3. If not, enter your IP address on the browser, you can see the IP on the projector screen.
4. The default IP is 192.168.100.10



5.2. Download Software

1. Select "Download software" function.
2. Press "**Login**" button to download Utility, the default password is blank
3. You can save file first then execute later or execute this utility directly.
4. Follow Installation Wizard instructions to proceed till the installation process complete.
5. If pop up "**Windows Security Alert**" because Windows firewall block this program. You just press "**Unblock**" button to continue installation.
6. Once installation complete, a utility shortcut come out on the screen.









Notice:

When using IE8.0 version, please close the **"Smart Screen Filter"** under safety settings. Then re-access VPS web management again to download the driver.



5.3. Conference Control

1. This function allows you to host a meeting smoothly without projector cable swapping and each participant can show their presentation easily.
2. Select **"Conference Control"** function.
3. Enter password, the default value is "trainer", and then press [Login].
4. After login, you can see a User List on the screen which indicates all of users connected to VPS box.
5. There are three columns, **"Computer Name"**, **"Play Control"** and **"IP Address"**.
6. You can press **"Play Control"** button   to control who is next presenter by  **"Play"** button and  **"Stop"** button.
7. User List
 - **Computer Name:** The name of PC connected to VPS box.
 - **Play control** : Show current user's projecting status.
 -  : Start projecting
 -  : Stop projecting.
 - **IP address** : The IP address of PC



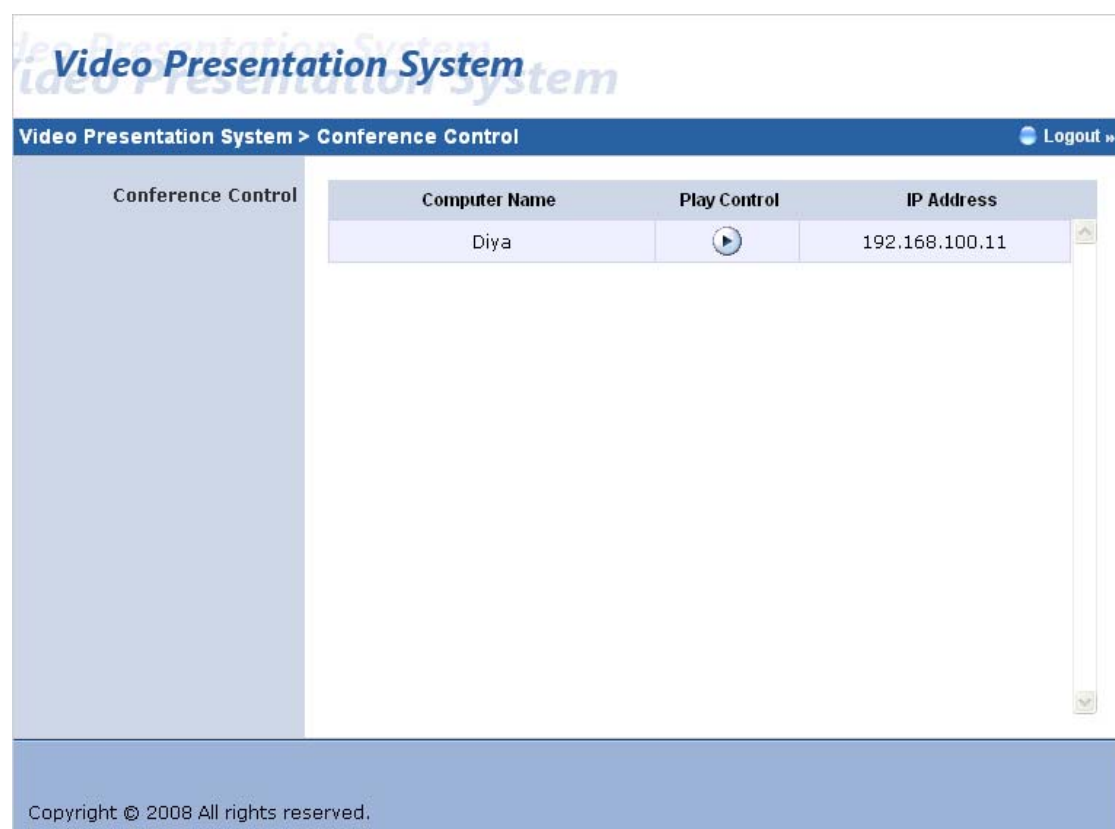
Video Presentation System

Video Presentation System > Conference Control

Download
Conference Control
Admin

User Name **trainer**
Password


Copyright © 2008 All rights reserved.



Video Presentation System

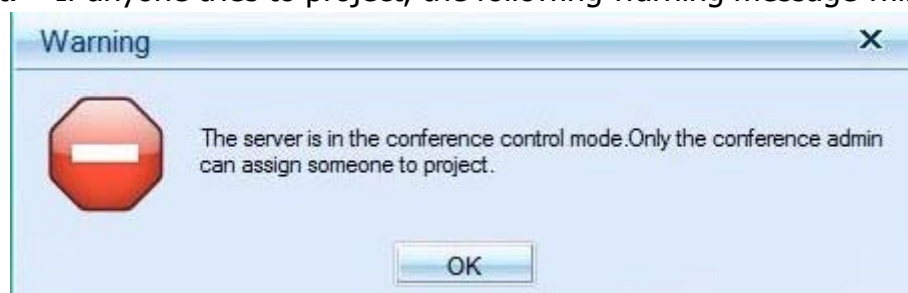
Video Presentation System > Conference Control [Logout](#)

Conference Control

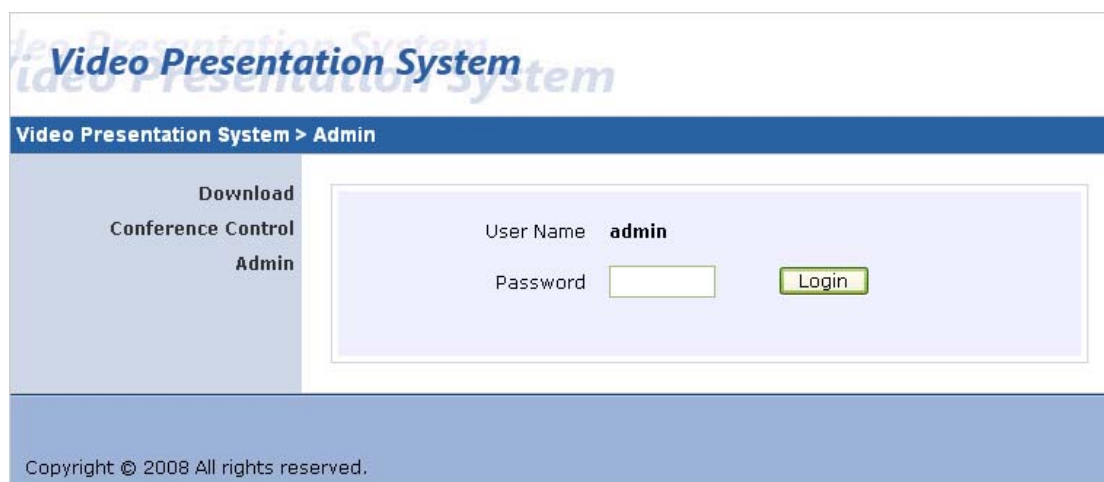
Computer Name	Play Control	IP Address
Diya		192.168.100.11

Copyright © 2008 All rights reserved.

In the conference session, only the conference admin can assign someone to project. If anyone tries to project, the following warning message will popup.



5.4. Login Web Admin



Video Presentation System

Video Presentation System > Admin

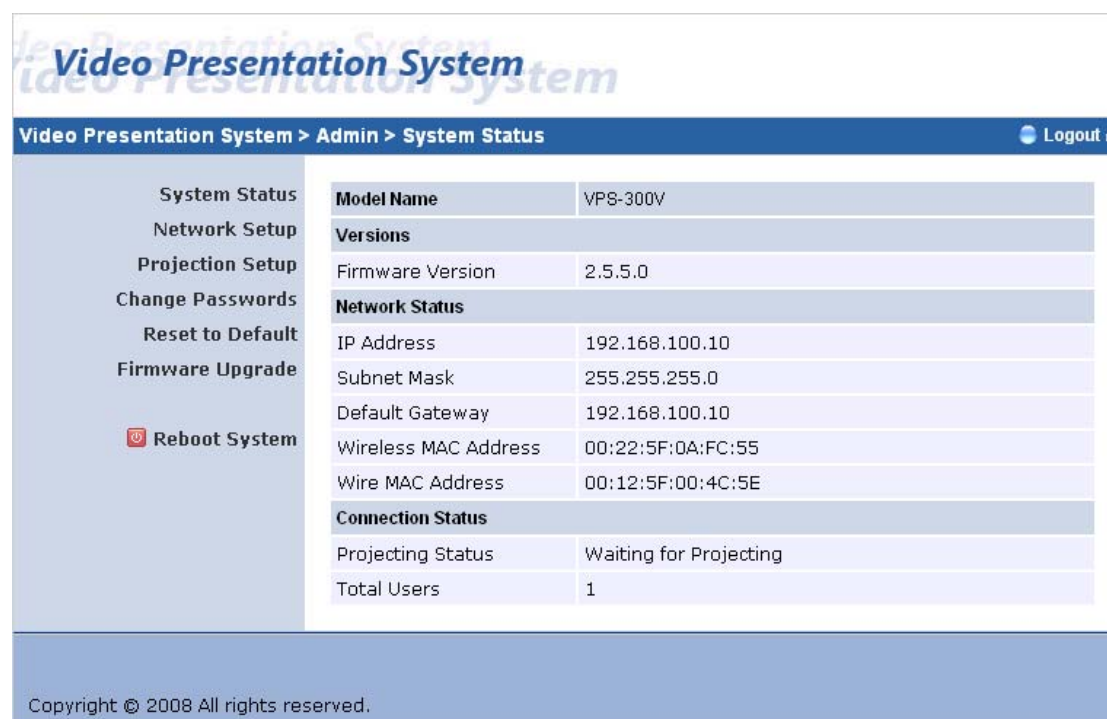
Download
Conference Control
Admin

User Name **admin**
Password

Copyright © 2008 All rights reserved.

1. Click [**Admin**] and then enter password to login web page.
2. The password default value is "admin".

5.5. System Status



Video Presentation System

Video Presentation System > Admin > System Status

System Status
Network Setup
Projection Setup
Change Passwords
Reset to Default
Firmware Upgrade

Model Name	VPS-300V
Versions	
Firmware Version	2.5.5.0
Network Status	
IP Address	192.168.100.10
Subnet Mask	255.255.255.0
Default Gateway	192.168.100.10
Wireless MAC Address	00:22:5F:0A:FC:55
Wire MAC Address	00:12:5F:00:4C:5E
Connection Status	
Projecting Status	Waiting for Projecting
Total Users	1

Copyright © 2008 All rights reserved.

*** Click [**System Status**], shows current system status.

Model Name: Product model name

Versions:

1. **Firmware version no.:** Product firmware version number.
2. **Software version no.:** Windows client utility version number.

Network Status:

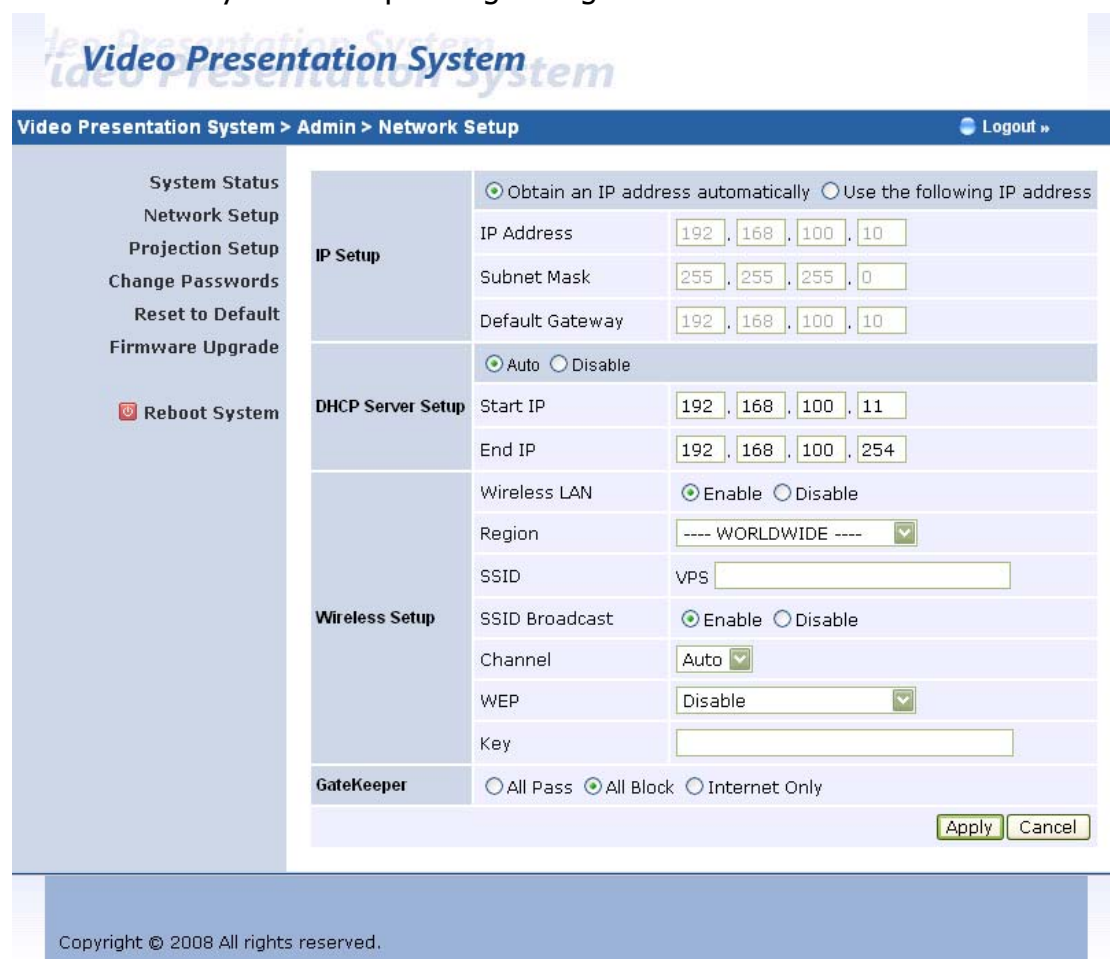
1. **IP address :** IP address of VPS-300V.
2. **Subnet Mask : subnet mask**
3. **Default Gateway : default gateway**
4. **Wireless MAC address : wireless MAC address**
5. **Wire MAC address : wire MAC address**

Connection Status:

1. **Projecting status:** which is "Waiting for projecting" or "Projecting"
2. **Total Users:** It shows how many users login into VPS box.

5.6. Network Setup

There are many kinds of operating configurations as below.



Video Presentation System > Admin > Network Setup [Logout](#)

System Status
 Network Setup
 Projection Setup
 Change Passwords
 Reset to Default
 Firmware Upgrade
 Reboot System

IP Setup

☒ Obtain an IP address automatically ☐ Use the following IP address

IP Address: 192 . 168 . 100 . 10

Subnet Mask: 255 . 255 . 255 . 0

Default Gateway: 192 . 168 . 100 . 10

DHCP Server Setup

☒ Auto ☐ Disable

Start IP: 192 . 168 . 100 . 11

End IP: 192 . 168 . 100 . 254

Wireless Setup

Wireless LAN: ☒ Enable ☐ Disable

Region: ---- WORLDWIDE ----

SSID: VPS

SSID Broadcast: ☒ Enable ☐ Disable

Channel: Auto

WEP: Disable

Key:

GateKeeper

☐ All Pass ☒ All Block ☐ Internet Only

[Apply](#) [Cancel](#)

Copyright © 2008 All rights reserved.

< Auto-Configuration Network Setup>

The default setting of the VPS-300V is DHCP client. When the VPS-300V is connected to a LAN that already has a DHCP server present, the VPS takes an IP address assigned to it by the server. When it is connected to a LAN that does not have a DHCP server, VPS-300V becomes the DHCP server in the network.

< IP Setup>

- ◆ You can select "obtain IP address automatically" or "Use the following IP address"
- ◆ IP Address: The default value is 192.168.100.10.
- ◆ Subnet Mask: The default value is 255.255.255.0
- ◆ Default Gateway: The default value is 192.168.100.10

<DHCP Server Setup>

- ◆ You can select "auto(Enable/Disable DHCP Server" or "Disable"
- ◆ Start IP: The start IP address of DHCP Server.
- ◆ End IP: The end IP address of DHCP Server.

< Wireless Setup>

- ◆ Wireless LAN: you can select "Enable" or "Disable"
- ◆ Region: default value is "Worldwide".
- ◆ SSID: SSID string, max. Length is 32 bytes.
- ◆ SSID Broadcast: you can select "Enable" or "Disable"
- ◆ Channel: to set fixed channel or Auto. The "Auto" means after power on VPS, it will scan all of wireless channel and select clear one channel automatically.
- ◆ WEP: you can Disable WEP key or select one of 64bit or 128bit in ASCII or HEX string.
- ◆ Key: If WEP is enabled, you have to set key value according to WEP mode you selected.

< Gatekeeper>

Gatekeeper is designed for ensuring the enterprise network security within VPS box

- ◆ **"All Block"** can block Guest Users(through wireless) to access all office network(LAN),
- ◆ **"All Allow"** can pass Guest Users(through wireless) to access all office network
- ◆ **"Internet Only"** can block Guest Users (through wireless) from office network (LAN) but still reserve internet connection capability.

<Apply >: press button to select this mode

<Cancel>: press button to abort action.

<Back>: Back to Operating mode main menu

5.7. Projection Setup

Video Presentation System

Video Presentation System > Admin > Projection Setup Logout »

Projection Setup

Resolution	XGA (1024X768)
Color Depth	Normal (16 bit)
Screen Refresh Rate	60 Hz
Login Code	<input type="radio"/> Disable <input checked="" type="radio"/> Random <input type="radio"/> Use the following code <input type="text"/>

Copyright © 2008 All rights reserved.


*** Click **[Projection Setup]** button

- ◆ **<Resolution>**: 1024*768, 1280x768 and 800*600.
- ◆ **<Color Depth>**: provide VPS-300V output with 16bit or 32 bit color depth. It depends on your PC settings.
- ◆ **<Screen Refresh Rate>**: This is VGA output refresh rate, provides 60 Hz and 75Hz to suit for different kinds of projectors.
- ◆ **<Login Code>**: You can select "Disable", "Random", or "Use the following code" to set a specified 4-characters Number.
- ◆ **<Apply>** : Confirmation and Save modifications
- ◆ **<Cancel>**: Cancel all the modifications

5.8. Change Passwords

Video Presentation System

Video Presentation System > Admin > Change Passwords Logout »

System Status	
Network Setup	
Projection Setup	
Change Passwords	
Reset to Default	
Firmware Upgrade	
 Reboot System	

Download		
Enter New Password	<input type="text"/>	<input type="button" value="Apply"/>
Confirm New Password	<input type="text"/>	
Conference Control		
Enter New Password	<input type="text"/>	<input type="button" value="Apply"/>
Confirm New Password	<input type="text"/>	
Admin		
Enter New Password	<input type="text"/>	<input type="button" value="Apply"/>
Confirm New Password	<input type="text"/>	

Copyright © 2008 All rights reserved.

*** Click [**Change Password**] button, to change password value.

- ◆ **<Enter New Password>**: enter new password you want to change for each category.
- ◆ **<Confirm New Password>**: double confirm new password.
- ◆ **<Apply>**: Confirmation and Save modifications.

5.9. Reset to Default

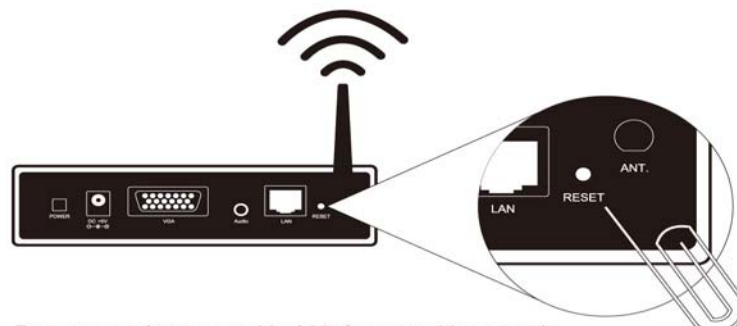


*** Click **[Reset to Default]** button to restore factory default settings.

<Apply>: Confirmation and action.

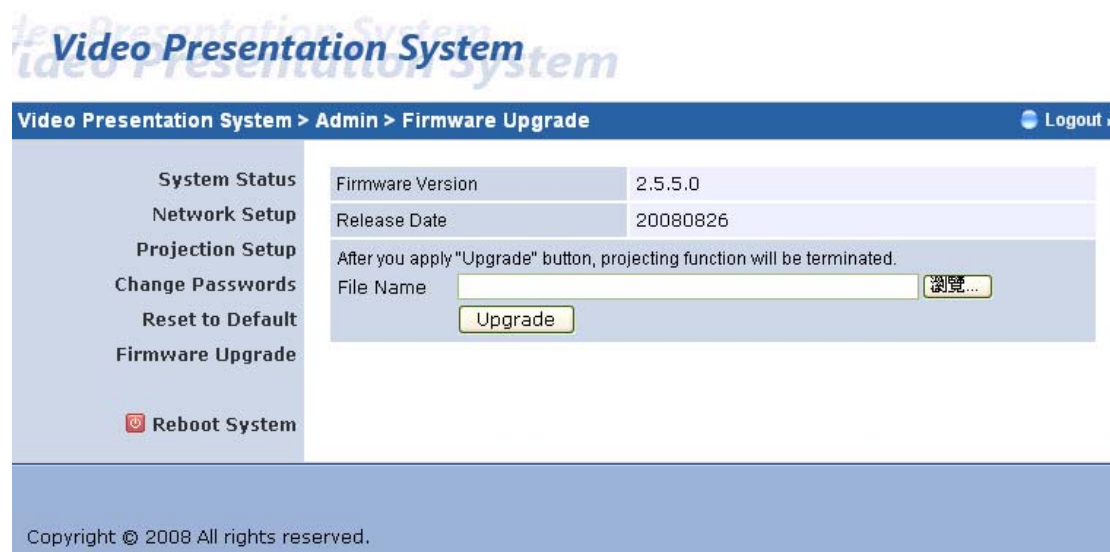
*** **Another way to restore Factory Default Settings, Follow below procedures.**

1. Power off VPS-300V.
2. On the rear panel, press **[Reset]** button and **Hold**.
3. Turn on VPS-300V.
4. Wait for over 10 seconds and relief **[Reset]** button.
5. It will take effect to restore factory default settings.



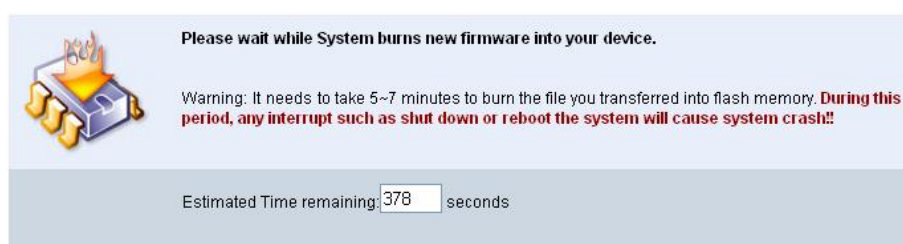
Press reset button and hold it for over 10 seconds.

5.10. Firmware Upgrade



*** Click **[Firmware Upgrade]** button to upgrade firmware.

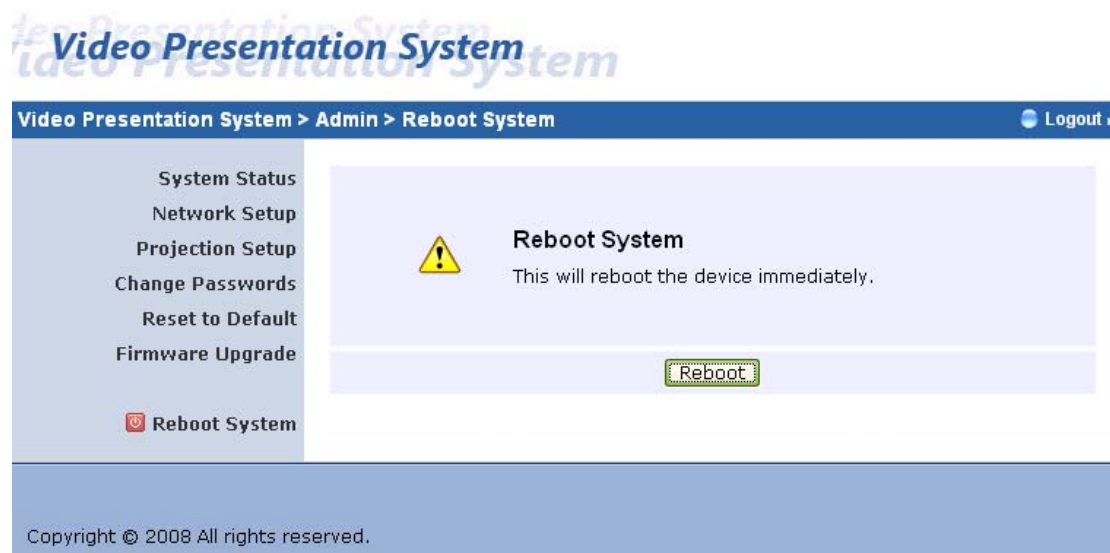
1. Firstly, you have to get latest firmware image file from your vendor.
2. Click **<Browse>** to specify file name you want to upgrade.
3. Click **<Upgrade>** to start.
4. A warning message shown and count down counter on the screen.
5. After a few minutes, a complete message shown on the screen.
6. Restart VPS-300V to take effect.



Warning: Don't power off VPS while firmware upgrade in progress,

otherwise will cause your Box doesn't work and have to return device to your vendor for fixing.

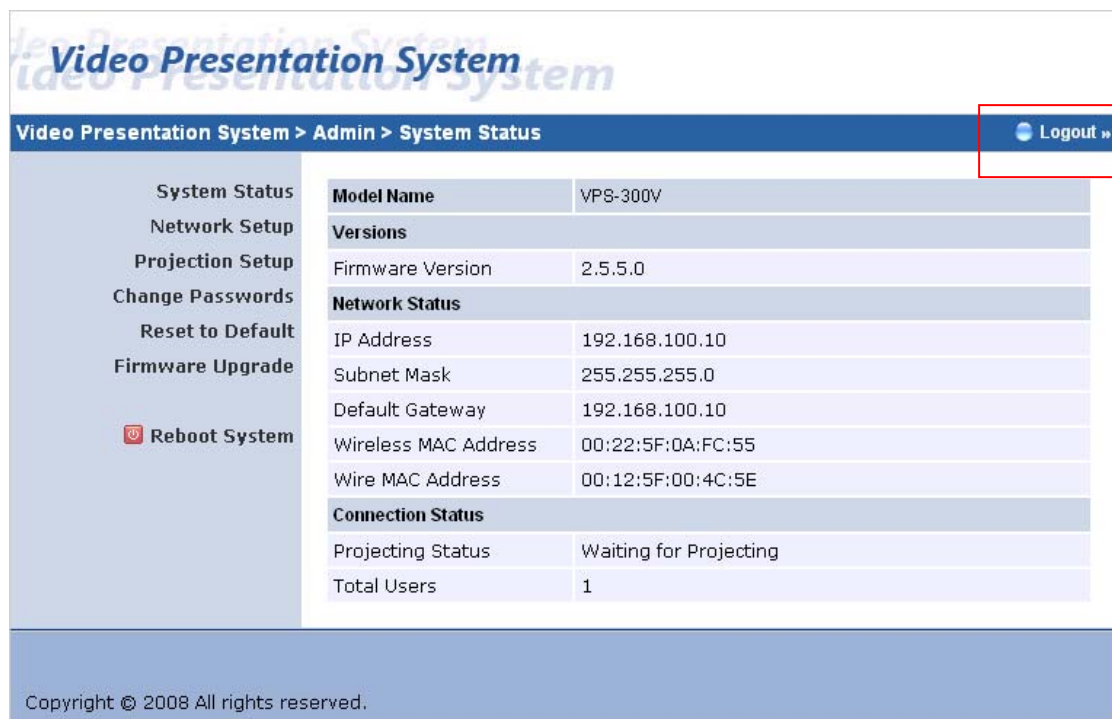
5.11. Reboot System



*** Click **[Reboot System]** button, to restart system

- ◆ **<Reboot>**: reboot system automatically.

5.12. Logout



The screenshot shows the 'Video Presentation System' admin interface. The breadcrumb trail is 'Video Presentation System > Admin > System Status'. A 'Logout »' button is located in the top right corner, enclosed in a red box. The left sidebar contains a menu with the following items: System Status, Network Setup, Projection Setup, Change Passwords, Reset to Default, Firmware Upgrade, and a 'Reboot System' button with a power icon. The main content area displays system information in a table format.

System Status	
Model Name	VPS-300V
Versions	
Firmware Version	2.5.5.0
Network Status	
IP Address	192.168.100.10
Subnet Mask	255.255.255.0
Default Gateway	192.168.100.10
Wireless MAC Address	00:22:5F:0A:FC:55
Wire MAC Address	00:12:5F:00:4C:5E
Connection Status	
Projecting Status	Waiting for Projecting
Total Users	1

Copyright © 2008 All rights reserved.

*** Click **[Logout]** button, to back Web home page.

6.[Appendix]

6.1 Accessories

1	VPS-300V	1PC
2	VPS-300V Antenna	1PC
3	USB Token	1PC
4	Adaptor DC 5V, 2.5A	1PC
5	Mounting Bracket	1PC
6	Bracket Fix Screws	4PCS
7	Mounting Screws	2PCS



6.2 Packaging Specification

Dimension	155mm(W) x 195mm(D) x 110mm(H)
Weight	900g



6.3 Wall Mount Instructions (Optional)

