

V-CUBE Seminar

User Manual

1. Overview and Checking of System Operation

V-cube, Inc.

2013/05/20

This document is the user manual for V-CUBE Seminar, a seminar streaming service.

Revision history

Revision date	Details
2013/10/09	Corrected images
2013/05/20	Changed system requirements for additional functions
2012/07/17	First version

Contents

1	About this Manual	1
2	About V-CUBE Seminar	1
2.1	Overview	1
2.2	What Seminar Can Do	1
3	Seminar Participants.....	2
3.1	Presenter (Host).....	2
3.2	Staff (Presentation Assistant).....	2
3.3	Audience	2
4	Before using Seminar	3
4.1	Equipment Requirements	3
4.1.1	PC Specifications	3
4.1.2	Web Cameras, Microphones and Headsets.....	3
4.2	Checking the Operating Environment with V-CUBE Checker2	4
4.2.1	Downloading Checker2	4
4.2.2	How to Use Checker2 to Check the Operating Environment.....	5
4.2.3	Checking the Results	6
4.3	Checking the Operating Environment by using the Audience Viewing Checker	6
4.3.1	Accessing the Audience Viewing Checker (Presenter)	6
4.3.2	Accessing the Audience Viewing Checker (Audience).....	8
4.3.3	Checking the Audio-visual Environment for a Live Seminar.....	9
4.3.4	Checking Audio-visual Environment for an On-demand (Recorded) Seminar	10
5	Recommended System Requirements	12
5.1.1	Participating as Presenter	12
5.1.2	Participating as Audience	13
5.1.3	Using Mobile Devices	14
5.1.4	Using the Content Editor	14

1 About this Manual

This Manual provides instructions on how to use V-CUBE Seminar (or "Seminar").

2 About V-CUBE Seminar

2.1 Overview

Seminar is a system providing online virtual seminar room. This system enables you to stream audio-visual, web-based seminars to your clients and personnel in widely separated locations.

2.2 What Seminar Can Do

- Stream audio-visual, web-based seminars
- Give presentations using distributed documents
- Record and stream web-based seminars
- Communication via instant messaging
- Distribute documents
- Enable audience participation
- Conduct and compile questionnaires
- Enable the posting of banner ads and links

3 Seminar Participants

3.1 Presenter (Host)

Presenters are seminar participants who can stream audio and video to the Audience while using all of Seminar's functionality, including the whiteboard and questionnaires. More precisely, only one participant can stream audio and video to the remaining participants at a given moment, and is called the Presenter.

3.2 Staff (Presentation Assistant)

Staff are participants who can use all of Seminar's functionality, including the whiteboard and questionnaires. Unlike the Presenter, audio and video are not streamed from the staff.

However, it is possible for one of the staff to become the Presenter who can then stream audio and video by using the **Be presenter** button.

3.3 Audience

The Audience are participants who can view seminars. Basically, Seminar does not stream audio and video from the Audience.

4 Before using Seminar

4.1 Equipment Requirements

Online seminars usually require a PC, an Internet connection, a microphone or headset for voice input. See below for what is needed to get started with Seminar.

4.1.1 PC Specifications

Check your PC meets the recommended system specifications. This is to ensure that Seminar runs properly and smoothly. For more details on the recommended system requirements, refer to the specifications in "Recommended System Requirements".

Recommended system requirements (for Presenters)

- | | | |
|-------------------------------|--------------------------|---|
| 1) CPU | (Windows XP) | Core 2 Duo 2.53 GHz or better
or an equivalent or faster CPU |
| | (Windows Vista or 7) | Core 2 Duo 2.53 GHz or better
or an equivalent or faster CPU |
| | (Mac OS X 10.6 or later) | Core Duo 1.66 GHz or better
or an equivalent or faster CPU |
| 2) Available memory | (Windows XP) | 1 GB/2 GB or greater |
| | (Windows Vista or 7) | 2 GB/4 GB or greater |
| 3) Flash Player 11.0 or later | | |

4.1.2 Web Cameras, Microphones and Headsets

Seminar enables you to stream audio and video online. You will need a web camera and microphone, or a headset.

Note 1. [To find out about our recommended web cameras and headsets, see our website or contact our representative.](#)

4.2 Checking the Operating Environment with V-CUBE Checker2

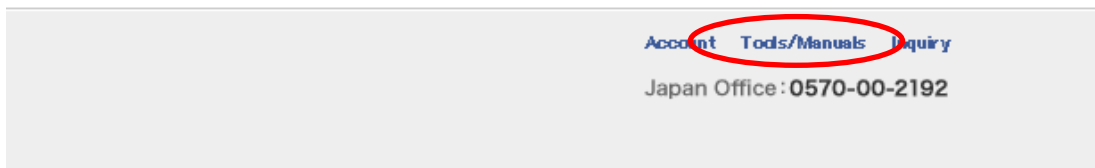
Check your PC and Internet connection with Checker2, a tool which you can download after you log in.

4.2.1 Downloading Checker2

Step 1. Log in to Seminar.

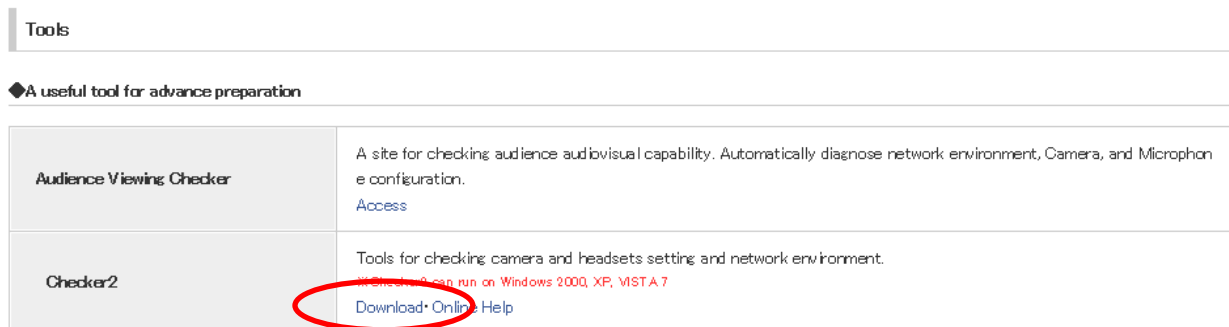
For more details, refer to "Logging In" later on in this manual.

Step 2. Click the Tools/Manuals link at the bottom left of the screen.



Step 3. Click Download in Checker2.

Download the Checker2 executable (in .exe format).



Step 4. Save the file.

Save the file to the Desktop or somewhere else by clicking **Save**.

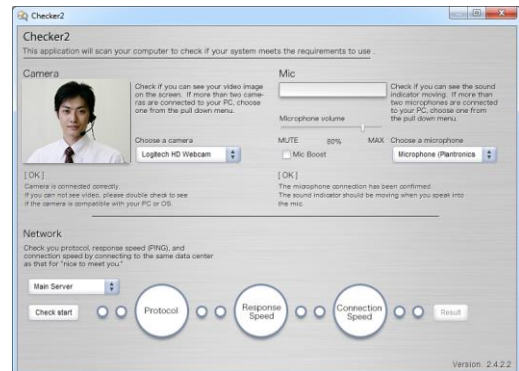
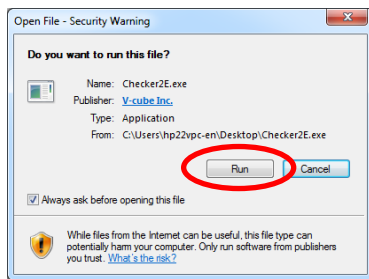


The icon displayed on the PC screen →

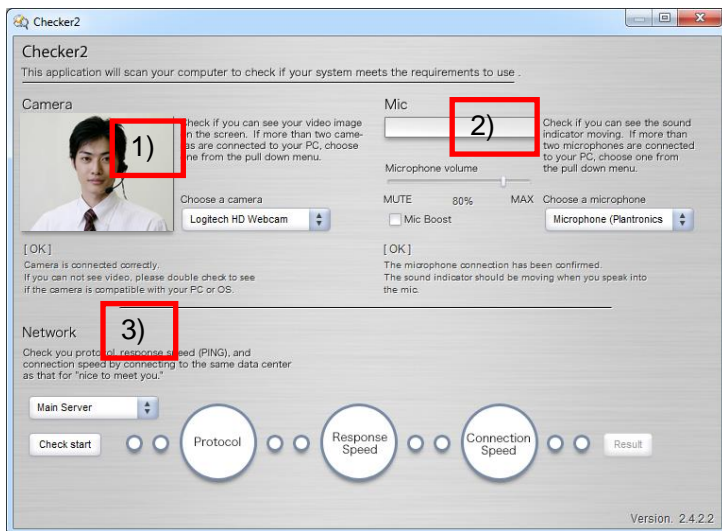


Step 5. Click the icon for the file you saved to start Checker2.

Checker2 starts up when you click Run.



4.2.2 How to Use Checker2 to Check the Operating Environment



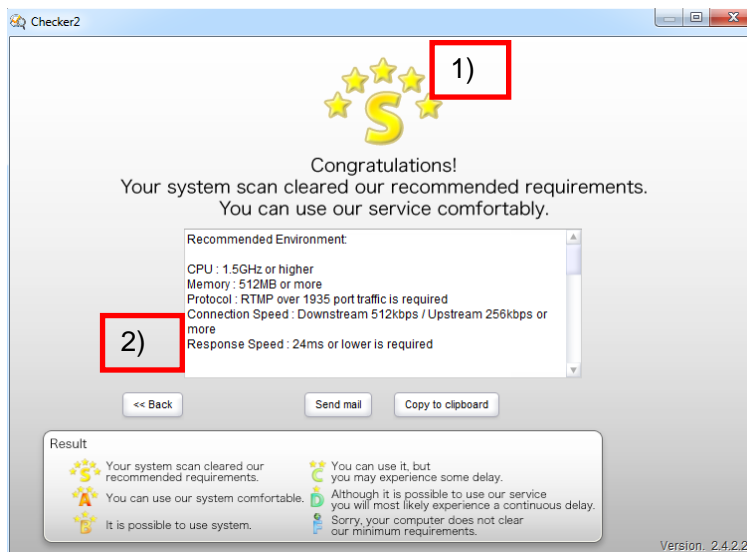
- 1) Checking your web camera
You can check if your web camera is capturing video. In cases where Checker2 detects multiple cameras, select the one you want to use to capture video.
- 2) Checking your microphone
You can check if your microphone is picking up sound. If multiple microphones are detected, select the microphone you want to capture sound.

- 3) Checking your network environment
Click the **Check start** button to check your network environment and the operating environment of your PC.

Click **Result** button when that text appears in black.



4.2.3 Checking the Results



1) Overall rating

A rating from S to F is displayed depending on your network environment and the operating environment of your PC.

2) Detailed results

Detailed results are displayed in figures after analysis is completed of the operating environment of your PC and the connection speed of your network.

Note 1. Depending on the overall rating, take the necessary actions such as adding memory to your PC.

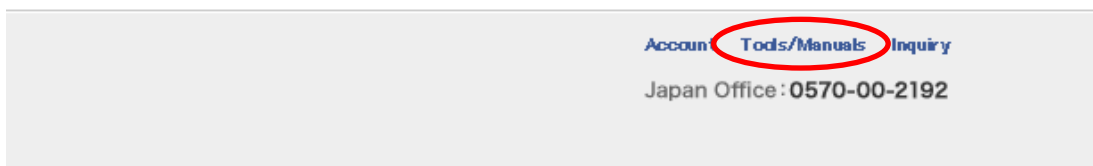
Contact our Customer Support Center if you have any questions.

4.3 Checking the Operating Environment by using the Audience Viewing Checker

4.3.1 Accessing the Audience Viewing Checker (Presenter)

Step 1. Log in to Seminar.

Step 2. Click the Tools/Manuals link at the bottom left of the screen.




Step 3. Click Access in the Audience Viewing Checker field located in the center of the page.

Tools

◆A useful tool for advance preparation

Audience Viewing Checker	A site for checking audience audiovisual capability. Automatically diagnose network environment, Camera, and Microphone configuration. Access
Checker2	Tools for checking camera and headsets setting and network environment. ※Checker2 can run on Windows 2000, XP, VISTA.7 Download · Online Help

You have now displayed the **Viewing checker** page.



Viewing checker

Check the operating environment of the online seminars available in your environment.
 Check results are guidelines, but it does not determine whether or not this result can participate.


Audience who are in live Seminar

check operating environment

Audience who are in On Demand Seminar(recording)

check operating environment

※Please confirm that the speaker and earphones are usable when you can not hear voices over the checker
 ※If notification "Can't run this Seminar" displayed on live Seminar, please shut Checker and check it again.
 ※If the check result is not improved, Frequently Asked Questions Please refer to the.



Get ADOBE FLASH PLAYER

If you want to use this service installed to use this service.

© V-cube, Inc. All Right Reserved.

4.3.2 Accessing the Audience Viewing Checker (Audience)

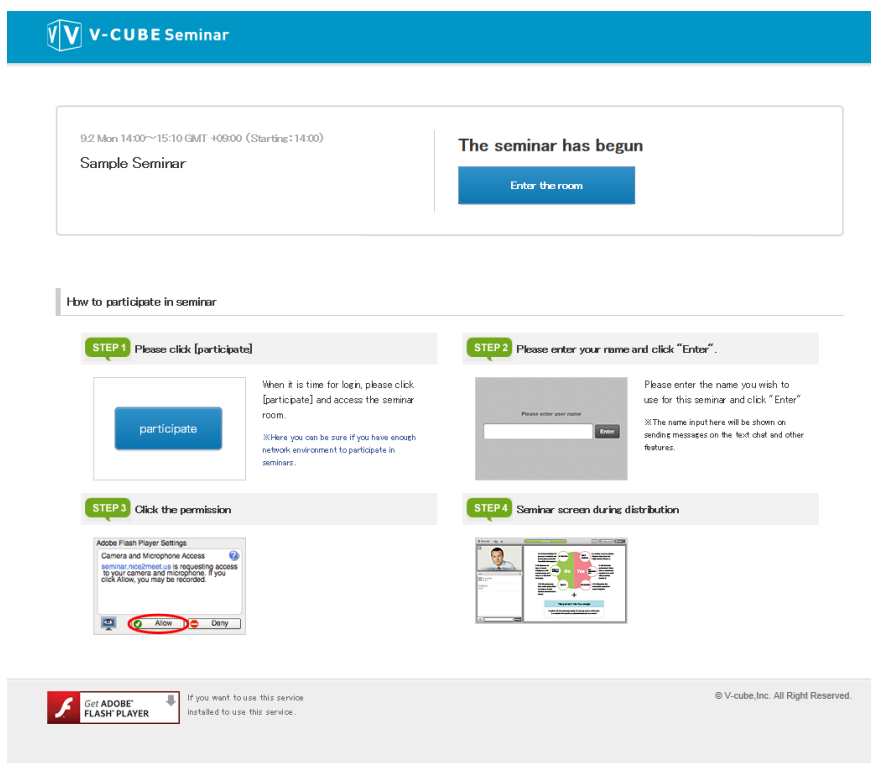
Step 1. Access <http://ondemand.seminar.vcube.com/checker/>.

The Audience can access and use the Audience Viewing Checker as follows.

In cases where an access URL for participation in a seminar has been announced, the Audience can access and use the Audience Viewing Checker as follows.

Note 1. Access the site directly following the first procedure if no access URL has been announced.

- 1) Access the URL for the seminar in which you want to participate.
- 2) A guide screen on seminar participation will appear.



9:2 Mon 14:00~15:10 GMT +0900 (Starting:14:00)
Sample Seminar

The seminar has begun
Enter the room

How to participate in seminar

STEP 1 Please click [participate]
When it is time for login, please click [participate] and access the seminar room.
※Here you can be sure if you have enough network environment to participate in seminars.

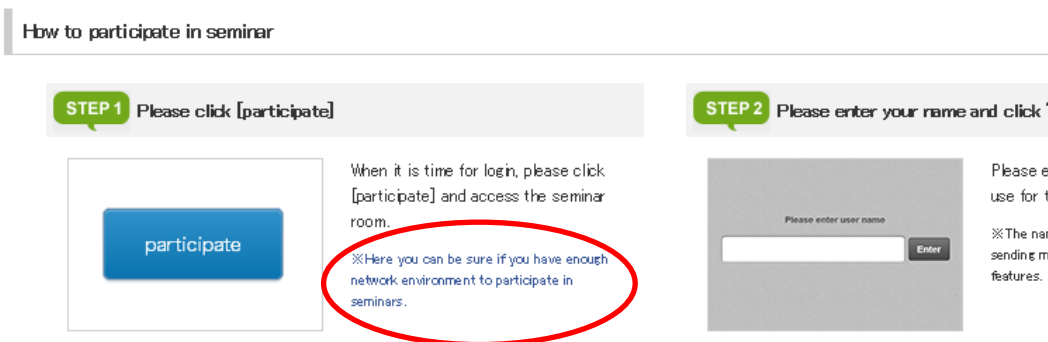
STEP 2 Please enter your name and click "Enter".
Please enter the name you wish to use for this seminar and click "Enter"
※The name input here will be shown on sending messages on the text chat and other features.

STEP 3 Click the permission
Adobe Flash Player Settings
Camera and Microphone Access
seminar room need us to requesting access to your camera and microphone. If you click allow, you may be recorded.

STEP 4 Seminar screen during distribution

Get ADOBE FLASH PLAYER If you want to use this service installed to use this service. © V-cube, Inc. All Right Reserved.

- 3) Click **Here you can be sure if...** as shown in Step 1.

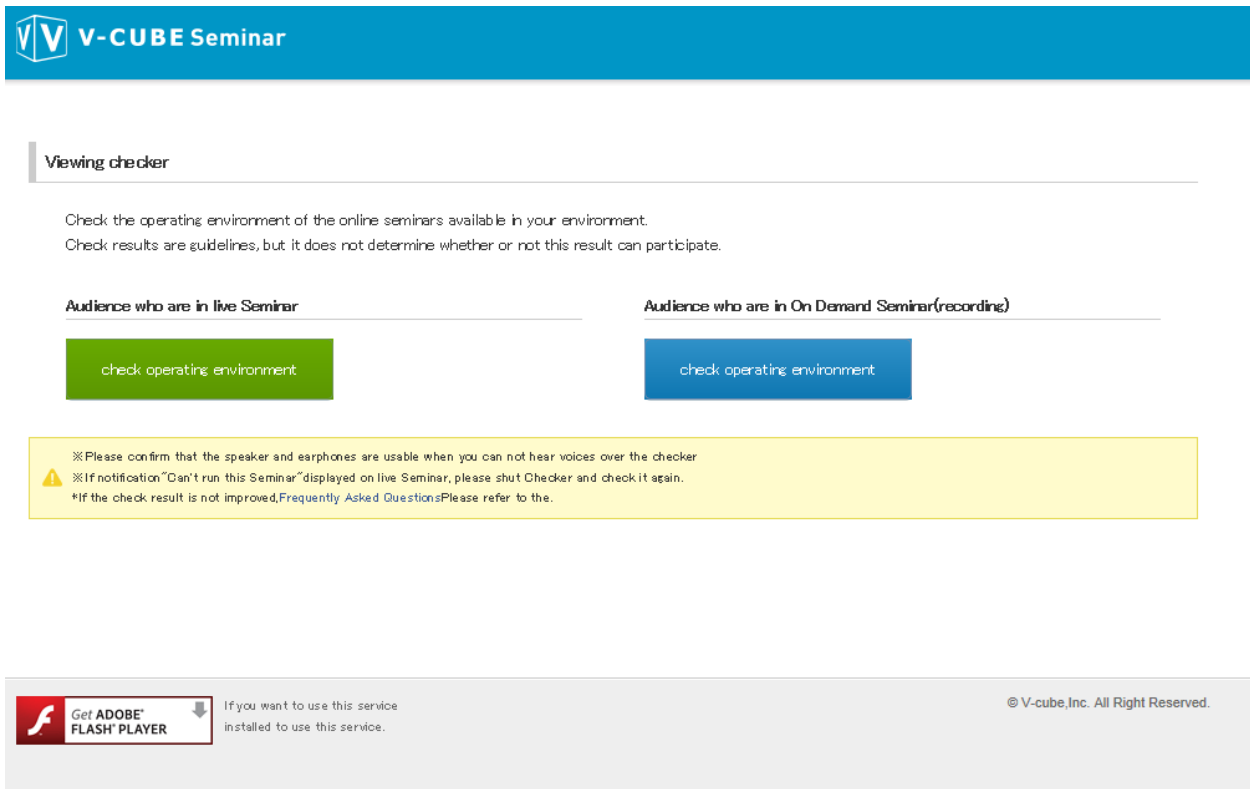


How to participate in seminar

STEP 1 Please click [participate]
When it is time for login, please click [participate] and access the seminar room.
※Here you can be sure if you have enough network environment to participate in seminars.

STEP 2 Please enter your name and click "Enter".
Please enter the name you wish to use for this seminar and click "Enter"
※The name input here will be shown on sending messages on the text chat and other features.

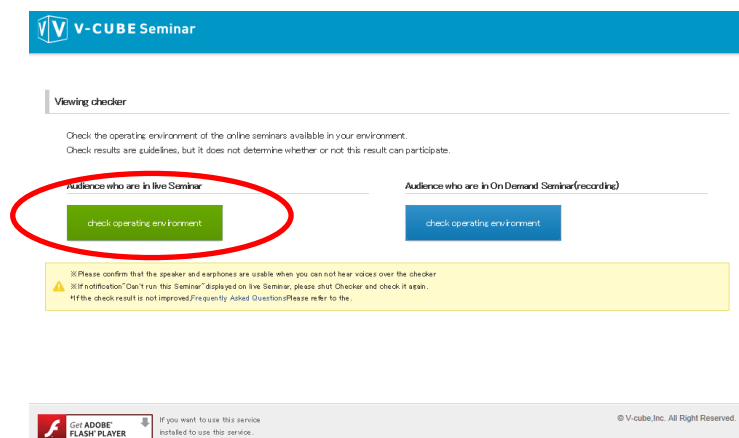
4) You can now access the **Viewing checker** page.



Front page of the **Audience Viewing Checker**

4.3.3 Checking the Audio-visual Environment for a Live Seminar

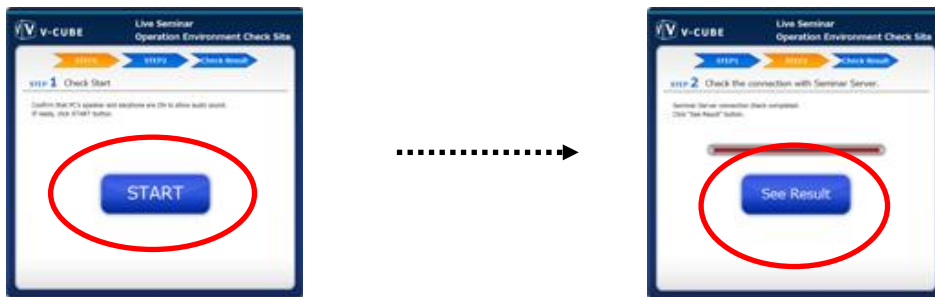
Step 1. Click check operating environment button in the Audience who are in live Seminar field.



Step 2. Click START.

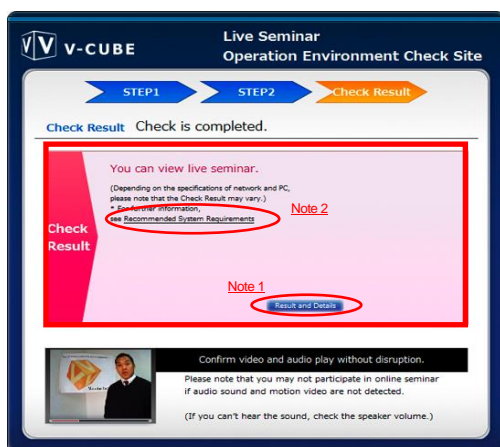
Click the **START** button to start the checking.

Step 3. Click See Result.



Step 4. View the results.

The check results are displayed. The results are displayed in the section enclosed in the red box.

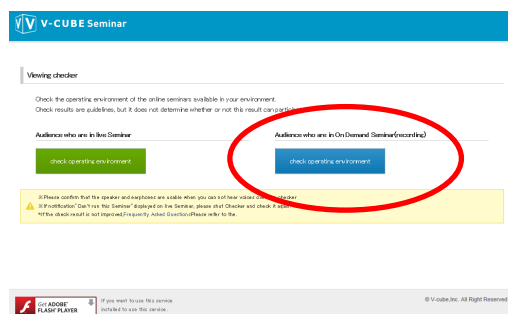


Note 1. [You can view the details of the results by clicking Result and Details.](#)

Note 2. [Poor results may indicate that your audio-visual environments do not meet the required standard. Click Recommended System Requirements to see if you meet the recommended system requirements.](#)

4.3.4 Checking Audio-visual Environment for an On-demand (Recorded) Seminar

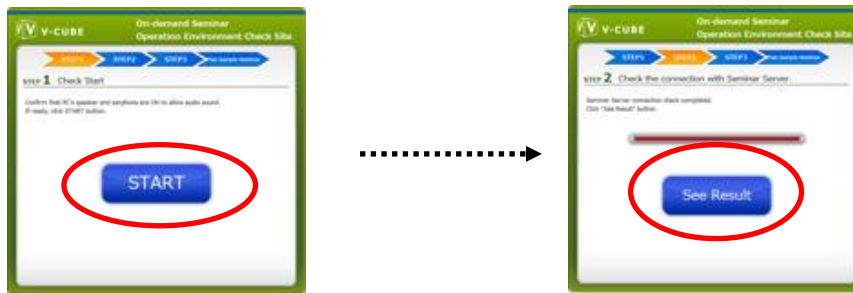
Step 1. Click check operating environment button in the Audience who are in On Demand Seminar (recording) field.



Step 2. Click START.

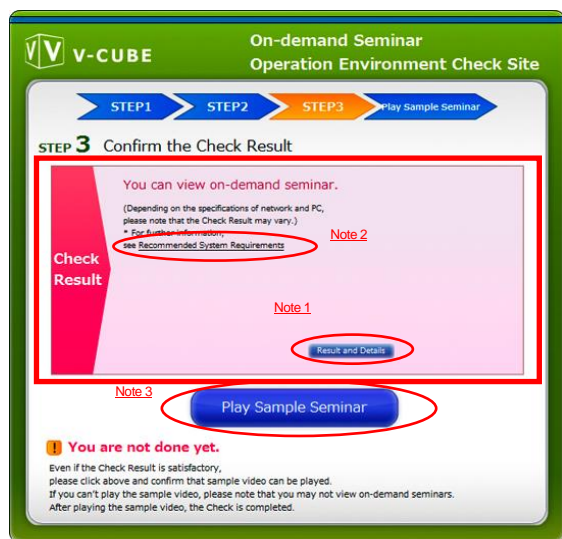
Click the **START** button to start the checking.

Step 3. Click See Result.



Step 4. View the results.

The check results are displayed. The results are displayed in the section enclosed in the red box.



Note 1. [You can view the details of the results by clicking **Result and Details**.](#)

Note 2. [Poor results may indicate that your audio-visual environments do not meet the required standard. Click **Recommended System Requirements** to see if you meet the recommended system requirements.](#)

Note 3. [You can play a sample on-demand \(recorded\) seminar by clicking **Play Sample Seminar**. Make sure to play an on-demand seminar once you check your audio-visual environment.](#)



5 Recommended System Requirements

Recommended system requirements for Seminar to work normally and smoothly are presented for two cases: participating as the Presenter and the Audience.

5.1.1 Participating as Presenter

OS	PC performance		Connection speed	Browser
Windows 7 Windows Vista	CPU	Core 2 Duo 2.53 GHz or better or an equivalent or faster CPU	Download speed 1 Mbps or faster	IE7, IE8, IE9 Firefox 3 or later
	Available/ Installed memory	2 GB/4 GB or greater		
	Graphics memory	256 MB or greater		
Windows XP	CPU	Core 2 Duo 2.53 GHz or better or an equivalent or faster CPU	Upload speed 512 Kbps or faster	IE6, IE7, IE8 Firefox 3.0 or later
	Available/ Installed memory	1 GB/2 GB or greater		
	Graphics memory	64 MB or greater		
Mac OS X (10.6 or later)	CPU	Core Duo 1.66 GHz or better or an equivalent or faster CPU		Safari 2 or later Firefox 3.0 or later

The above recommendations are based on the validation by our company and do not guarantee problem-free system operation in all environments.

The system may also work normally and smoothly even when you do not meet the recommended system specifications.

Note 1. Note regarding connection speeds

- It is assumed that a proxy is not being used or that the proxy has been bypassed.
- We recommend that you attend seminars with a LAN connection. Wireless connections may experience unexpected interruptions or other disruptions.
- The recommended connection speed corresponds to 128 kbps of streaming bandwidth for the Presenter (with Sharing3 not being used and without any streaming of video from the Audience).

Note 2. Flash Player 11.0 or a later version must be installed.

Note 3. If you are using a 64-bit OS, you will need to use a 32-bit web browser as Flash Player does not support 64-bit web browsers.

5.1.2 Participating as Audience

OS	PC performance		Connection speed	Browser	
Windows 7 Windows Vista	CPU	Core 2 Duo 1.66 GHz or better or an equivalent or faster CPU	Download speed 512 Kbps or faster Upload speed 256 Kbps or faster	IE7, IE8, IE9 Firefox 3 or later	
	Available/ Installed memory	512 MB/1 GB or greater			
	Graphics memory	64 MB or greater * 128 MB or greater is required for Ultimate, Business, or Home Premium			
Windows XP	CPU	Pentium 4 1.5 GHz or better or an equivalent or faster CPU		Download speed 512 Kbps or faster Upload speed 256 Kbps or faster	IE6, IE7, IE8 Firefox 3.0 or later
	Available/ Installed memory	512 MB/1 GB or greater			
	Graphics memory	64 MB or greater			
Mac OS X (10.6 or later)	CPU	Core Duo 1.66 GHz or better or an equivalent or faster CPU	Download speed 512 Kbps or faster Upload speed 256 Kbps or faster		Safari 2 or later Firefox 3.0 or later

The above recommendations are based on the validation by our company and do not guarantee problem-free system operation in all environments.

The system may also work normally and smoothly even when you do not meet the recommended system specifications.

Note 1. Note regarding connection speeds

- It is assumed that a proxy is not being used or that the proxy has been bypassed.
- We recommend that you attend seminars with a LAN connection. Wireless connections may experience unexpected interruptions or other disruptions.
- The recommended connection speed corresponds to 128 kbps of streaming bandwidth for the Presenter (with Sharing3 not being used and without any streaming of video from the Audience).

Note 2. Flash Player 10.1 or later version must be installed.

Note 3. If you are using a 64-bit OS, you will need to use a 32-bit web browser as Flash Player does not support 64-bit web browsers.

5.1.3 Using Mobile Devices

Using V-CUBE Seminar application

OS	Application system requirement	Compatible devices
iOS	iOS 5 or later	iPad 2, iPad (2012 release model), iPhone 4, iPhone 4S, iPhone 5, iPod Touch (4G) and iPod Touch (5G)
Android	Android 2.3 or later	-

Viewing on-demand content with an iOS browser

OS	Application system requirement	Compatible devices
iOS	iOS 5 or later	iPad 2, iPad (2012 release model), iPhone 4, iPhone 4S, iPhone 5, iPod Touch (4G) and iPod Touch (5G)

Note 1. [Android browsers do not support the viewing of on-demand Seminar content.](#)

5.1.4 Using the Content Editor

Recommended system requirements

OS	PC performance		Connection speed	Browser
Windows 7 Windows Vista	CPU	Intel Core i7 2.00 GHz or an equivalent or faster CPU	Download speed 512 Kbps or faster	IE8, IE9 Firefox 12 or later
	Available/ Installed memory	6 GB		
Mac OS X (10.4 or later)	CPU	Core Duo 1.66 GHz or better or an equivalent or faster CPU	Upload speed 256 Kbps or faster	Safari 5 or later

Note 1. [Note regarding connection speeds](#)

- It is assumed that a proxy is not being used or that the proxy has been bypassed.

Note 2. [Flash Player 10.2.0 or later version must be installed.](#)

We recommend that you use the latest Flash Player to ensure reliable use.

Note 3. [If you are using a 64-bit OS, you will need to use a 32-bit web browser as Flash Player does not support 64-bit web browsers.](#)