

StockWatch Mobile

For Nokia 9500 Communicator mobile phones

User manual

Ver: 1.1

Copyright © 2005, PT LIMAS CENTRIC INDONESIA Tbk

Except as permitted by prevailing laws and regulations, no part of this document may be reproduced or transmitted by any process or means without the prior written consent of PT LIMAS CENTRIC INDONESIA Tbk.

PT LIMAS CENTRIC INDONESIA Tbk, by publishing this document, does not guarantee that any information contained herein is and will remain accurate or that the use of the information will ensure correct and faultless operation of the relevant service or equipment. Without prior consent, PT LIMAS CENTRIC INDONESIA Tbk, at all time reserves editorial freedom in determining the form and contents of this document. PT LIMAS CENTRIC INDONESIA Tbk, its agents, and employees shall not be held liable to or through any user for any loss or damage whatsoever resulting from reliance on the information contained herein.

PT LIMAS CENTRIC INDONESIA Tbk hereby acknowledges all trademarks, registered trademarks and trading names that are referred to in the text.

LIMAS CENTRIC INDONESIA and its logo are the registered trademarks of PT LIMAS CENTRIC INDONESIA Tbk.

Other brands and their products are trademarks or registered trademarks of their respective holders and should be noted as such.

Published by PT LIMAS CENTRIC INDONESIA Tbk
Plaza Bapindo - Bank Mandiri Tower 23rd Floor
Jl. Jend. Sudirman Kav. 45-55 Jakarta 12190 - Indonesia

Contents

Chapter 1:

StockWatch Mobile Viewers	1
Minimum requirements	2
Technical support	2
About StockWatch Mobile	2
Running StockWatch Mobile for the first time	3
Registration Menu	6
If you have a valid full StockWatch Retail membership:	6
If you have a valid StockWatch Mobile Voucher card:	7
Running StockWatch Mobile (Online Mode)	8
To run the application	8
Refilling your StockWatch Mobile account using SW CAM	10
Changing your StockWatch Mobile Password	10
Checking your StockWatch Mobile version	11
Checking your StockWatch Mobile User ID	11
Switching from the current StockWatch Mobile Mode to Other Modes	11
Market Summary	12
Information contained	12
Personalized Quotation	14
Information contained	14
How to operate	14
To input and save a stock code	14
To replace a stock code with another one	15
To delete a stock code	15
Personalized Quotation for SGX Market	16
Buy and Sell Queue	17
Information contained	17
Buy and Sell Queue for SGX Market	18
Currency Quote	19
Information contained	19
How to operate	20
To input and save a currency code	20
To replace a currency code with another one	20

To delete a currency code	20
Most Active	21
Information contained	21
Running Trade Equity	23
Information contained	23
Trading board color	23
Running Trade Futures	24
Information contained	24
To open the viewer	25
Running Trade Fixed Income	26
Information contained	26
To open the viewer	27
News	28
Information contained	28
How to Operate	28
News Sources	28
News Categories	29
Charts	30
Information contained	30
To input and save a stock code	30
To display and save a stock chart	31
To open the saved stock chart	32
Major Indices	33
SMS Alerts	34
Running StockWatch Mobile (Periodic Update Mode)	40
To run the application	40
To configure the Periodic Update Mode	41
To open viewers in the Periodic Update Mode	42
To see the Periodic Update Mode log	43

Chapter 2:

StockTrade Mobile Viewers **45**

StockTrade Mobile Viewers	46
Orders	47
To submit a buy/sell order:	47
Order Status	48
How to Operate	50
Amending an Order	50
Canceling an Order	51

Transaction List	52
How to Operate	52
Preorder (offline version)	54
New Preorder	55
Preorder List	56
To edit an order in a Preorder file	57
To delete an order in a Preorder file	58
To delete a Preorder file with all of its contents	58
Preorder (online version)	59
Preferred Brokers	61
Trading Parameters	62
Viewer Function	62

Chapter 1:
StockWatch Mobile Viewers

Minimum requirements

Minimum requirements to run StockWatch Mobile GPRS version are:

- Selected mobile phones that support GPRS (such as Nokia 9500 Communicator).
- A GPRS connection to your telecommunication provider which runs well. Contact your operator to set up a GPRS connection on a Nokia 9500 Communicator.
- For installing StockWatch Mobile application, you need a personal computer to transfer the installation file to your mobile phone. See your Nokia 9500 Communicator user manual for transferring and installing an application on a Nokia 9500 Communicator.

Technical support

If you need help for installing StockWatch Mobile, you can contact Limas technical support.

Telephone : +62 021.526.6811-12

Fax : +62 021.526.6521

E-mail : helpdesk@limas.com

About StockWatch Mobile

Welcome and thank you for choosing StockWatch Mobile, the software that provides real-time stock information of domestic and regional financial markets and other important financial information around the region. The covered financial markets are:

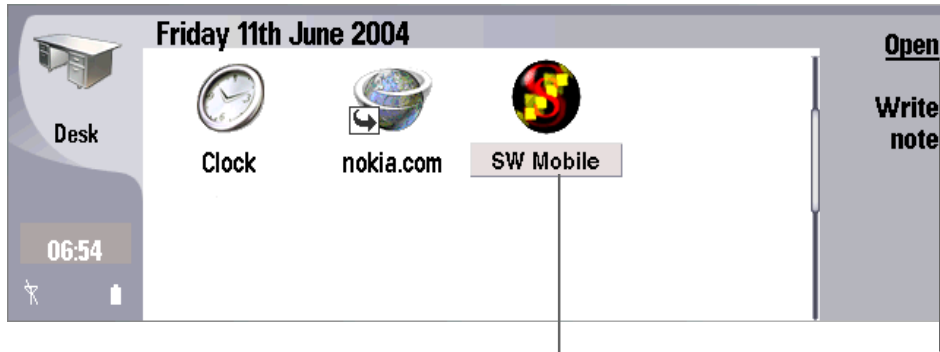
- The Jakarta Stock Exchange (JSX)
- The Surabaya Stock Exchange (SSX)
- The Singapore Stock Exchange (SGX)
- The Kuala Lumpur Stock Exchange (KLSE) and
- The Australian Stock Exchange (ASX).

Moreover, using StockWatch Mobile you can do an online JSX stock trading through StockTrade Mobile. It is an add-on program for StockWatch Mobile.

StockTrade Mobile provides a bridge between you and your broker to do a fast and accurate online trading. You will get real time information on the JSX equities from the StockWatch Mobile and place orders using the StockTrade Mobile.

In addition, SMS Alerts is also provided. The SMS Alerts enables you to monitor stock price movements using SMS.

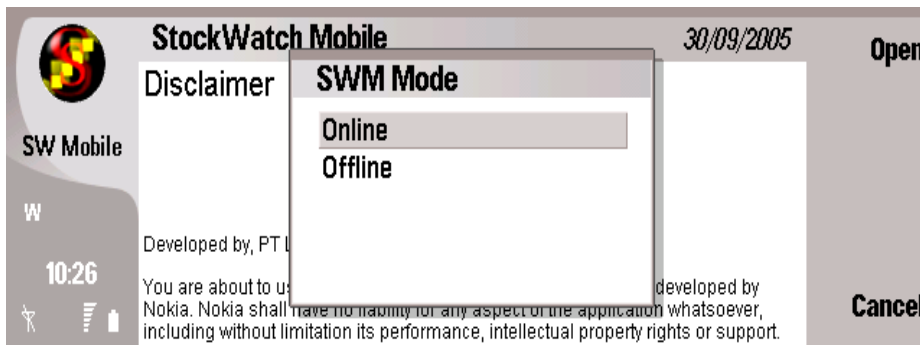
Running StockWatch Mobile for the first time



StockWatch
Mobile icon.

Click this softkey button to open
StockWatch Mobile.

When you open StockWatch Mobile, the following screen will appear after the Disclaimer screen is shown:



You need to select the StockWatch operating mode here.

- Select Online if you want to open StockWatch Mobile features with real-time data updates.
- Select Offline if you want to open StockWatch Mobile features with periodic data updates. The periodic data update interval can be set by users. For example: by setting the update interval to 5 minutes, new data will be obtained and displayed every 5 minutes. This will allow you to save the GPRS usage.

Moreover, when you open StockWatch Mobile for the first time, StockWatch Mobile's **free trial mode** will be activated for you. The free trial mode enables you to use a limited version of StockWatch Mobile.

See the overleaf page for the available StockWatch Mobile modes.

StockWatch Mobile Operating Modes



The free trial period is 30 days. In this free trial mode, the following features are available for you to access in the Online Mode:

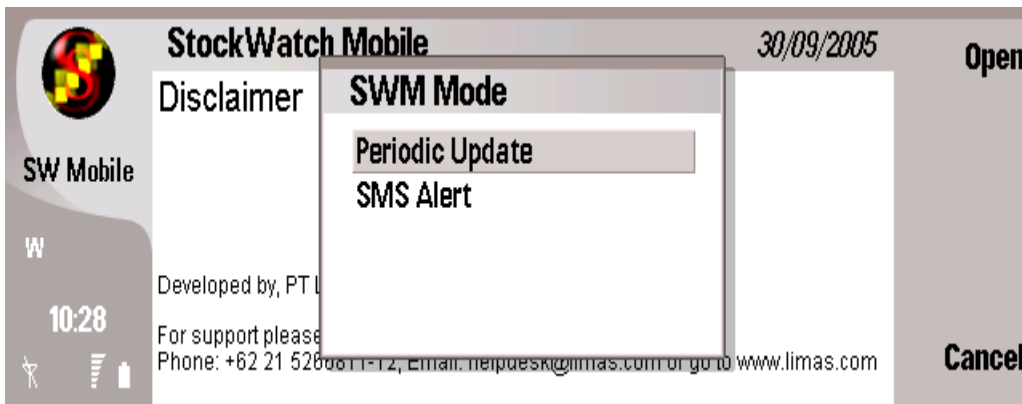
- Market Summary
- Personalized Quotation
- Currency Quote
- Most Active

To use StockWatch Mobile after the free trial mode is expired, you need to register. By registering your StockWatch Mobile account, you can access all available StockWatch Mobile's features.

To register, you need to purchase a StockWatch Mobile Voucher Card or obtain a full StockWatch Retail membership. (Please, contact Limas Sales Department for details or see www.ebursa.com for further information).

>>> If select Online, see page 8 for further explanations.

>>> If you select Offline, the following screen will be displayed:



- Select Periodic Update if you want to use the periodic update features of StockWatch Mobile. See page 40 for further explanations.

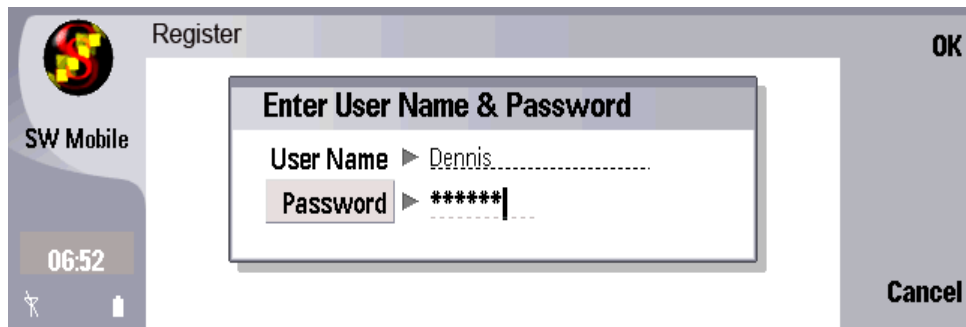
- Select SMS Alert if you want to configure and use the SMS Alert (Stock, Currency and News SMS Alerts). This SMS alert feature is not available in the Free-Trial Mode. See page 35 for further explanations.

Registration Menu

If you already have a valid StockWatch Mobile Voucher Card or full StockWatch Retail membership, you can register your StockWatch Mobile account.

If you have a valid full StockWatch Retail membership:

- Open StockWatch Mobile using **the online mode**.
- Select Options from the StockWatch Mobile's main menu. Next, select Registration. The following will appear:



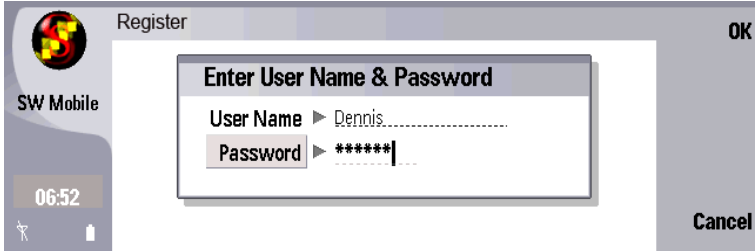
- Input your existing swretail username and password registered at <https://swretail.limas.com> and click OK. Your username and password will be validated. If this process is successful, your login details will be saved to the local memory of your hand phone. The login details will be encrypted by the application.

Next time you open the StockWatch Mobile application, you do not need to input the login details to login, as the application will use the login details saved to your mobile phone.

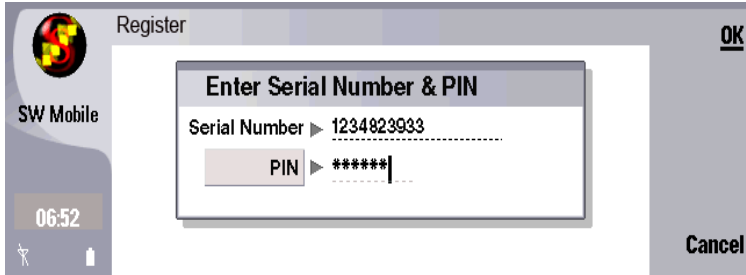
Note : You must change your password saved to the local memory of your mobile phone if you have changed the password at <https://swretail.limas.com>. See page 10 for details.

If you have a valid StockWatch Mobile Voucher card:

- Open StockWatch Mobile using **the online mode**.
- Select Options from the StockWatch Mobile’s main menu. Next, select Registration. The following will appear:



- Here, type in your new user name and password and click OK. The new user name and password are used to login to <https://swretail.limas.com> if you want to manage your new account details using your personal computer.
- After clicking the Ok softkey, you will receive a message informing you that the user name is not registered as this is a new user name. Select Ok to continue.



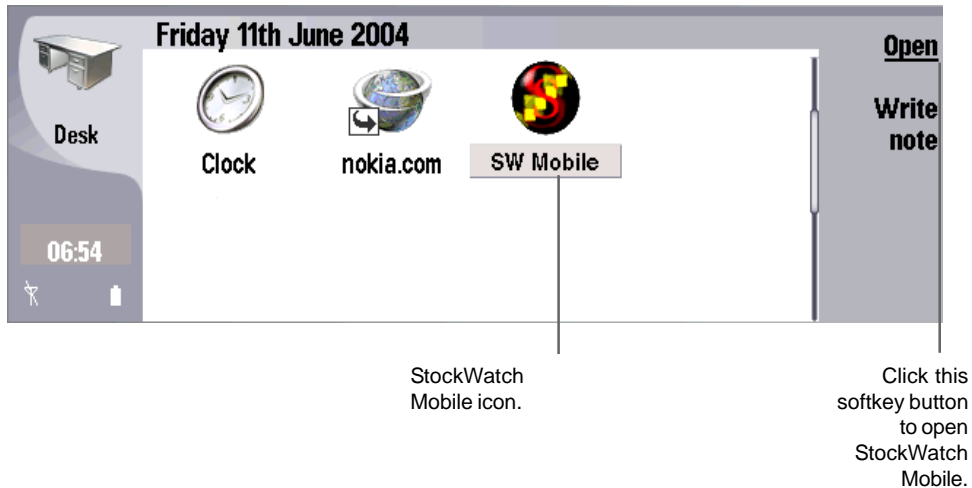
- Input the voucher serial number and PIN. Your serial number and PIN will be validated. If this process is successful, your login details will be generated by the StockWatch Mobile server.

The login details will be sent and saved to the local memory of your hand phone. The login details will be encrypted by the application.

Next time you open the StockWatch Mobile application, you do not need to input the login details to login, as the application will use the login details saved to your mobile phone.

Important note : Please **do not** uninstall the StockWatch mobile application after you successfully input the voucher serial number and PIN. If you do, this will empty your voucher balance. You can uninstall the StockWatch mobile application only if your voucher balance is already empty.

Running StockWatch Mobile (Online Mode)



To run the application

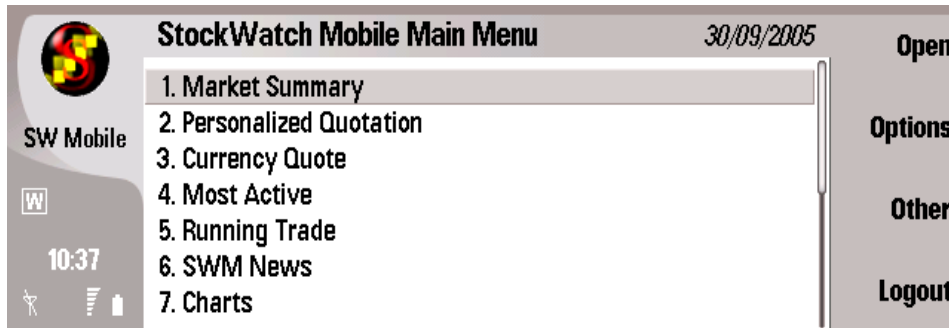
- Select the SW Mobile icon by using the navigation button and click on the navigation button. A StockWatch Mobile disclaimer screen will appear, Select Ok to continue.
- SWM Mode screen will appear, select Online. A message box asking your confirmation to connect to StockWatch Mobile server will appear. Select Ok.
- Next, a list of GPRS providers (access points) that you have will be shown, select one of them using the navigation button.
You will login automatically using the personal information saved to your mobile phone's local memory when you first installed and used the StockWatch Mobile application.
- If the login process is successful, information about your last login and your StockWatch Retail current balance will be shown. Click on the Ok softkey to continue.
- After the last login summary is shown, the StockWatch Mobile pricing scheme for every feature of StockWatch Mobile will be displayed. Your StockWatch Retail voucher value will be deducted based on the features that you choose. Use the navigation button to scroll down/up to see the available pricing scheme. Click on the Ok softkey to continue.

Note : The trading hours information will be shown when you open the pricing scheme window. The time zone is GMT + 07:00 (Jakarta, Bangkok, Hanoi).

- Finally, a list of StockWatch Mobile features will be displayed. Use the navigation button to scroll down/up and click the navigation button to open the selected viewer.

Note : When you open a feature, you will be asked to accept the subscription fee of the feature. If you select the feature without accepting the subscription fee, the feature will be opened with blank data.

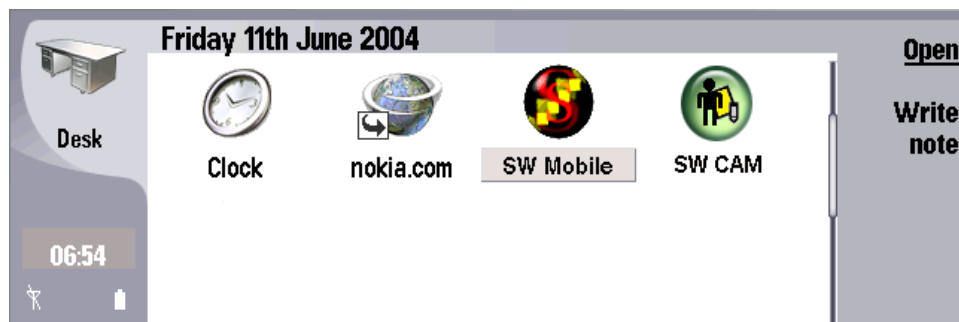
Note : You cannot open both StockWatch Mobile and StockWatch Retail using the same StockWatch Retail account details at the same time. If you do, your StockWatch Mobile will close automatically.



StockWatch Mobile consists of :

- Market Summary (for the JSX,SSX, KLSE, SGX and ASX markets)
- Personalized Quotation (PQ) (for the JSX, SSX, SGX, KLSE and ASX markets)
- Currency Quote
- Most Active (for the JSX, SSX, SGX, KLSE and ASX markets)
- Buy and Sell Queue (for the JSX, SSX, KLSE and SGX markets)
- Running Trade Equity (for the JSX, SSX and ASX markets)
- Running Trade Futures (for the JSX and SSX markets)
- Running Trade Fixed Income (for the JSX and SSX markets)
- Charts
- News, Major Indices, SMS Alerts
- StockTrade Mobile

Refilling your StockWatch Mobile account using SW CAM



SW CAM is used to refill your StockWatch Mobile account. You need to input your new serial number and PIN to refill the expired account.

Note : Before using SW CAM, make sure that you have successfully registered your StockWatch Mobile account.

Changing your StockWatch Mobile Password

You need to change the login details saved to your mobile phone if:

- You have already changed your password at <https://swretail.limas.com>.

To change your password:

- Firstly, you must change your password at <https://swretail.limas.com>.
- Secondly, open the StockWatch Mobile, a pop up window will appear informing you that your password has changed. You will be asked to change your password saved to your mobile phone's memory.
- Next, input your new password. Make sure the new password is the same as the new password registered at <https://swretail.limas.com>.
- Finally, save the new password to your mobile phone's memory.

Checking your StockWatch Mobile version

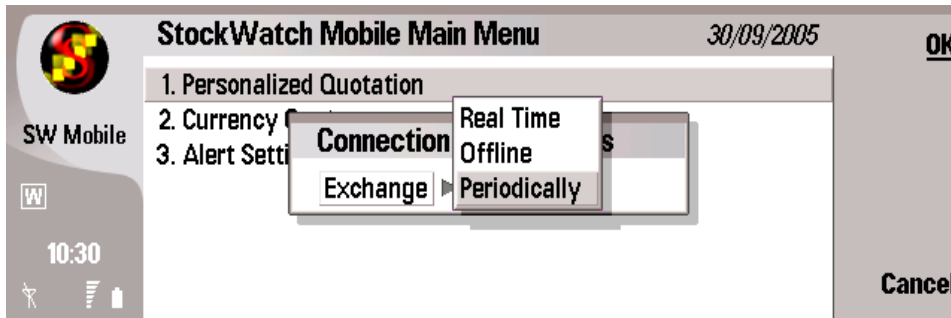
You can check your StockWatch Mobile version by selecting Other from the SWM main menu and then select Check Version.

Checking your StockWatch Mobile User ID

You can check your StockWatch Mobile user ID by selecting Other from the SWM main menu and then select User Info.

Switching from the current StockWatch Mobile Mode to Other Modes

You can change to other modes from the current mode by selecting Options from the SWM main menu and then select Connection Type.



There are 3 modes:

- Real Time, StockWatch Mobile Online Mode.
- Offline, to configure the SMS Alerts.
- Periodically, StockWatch Mobile Periodic Updates Mode.

Market Summary

You can open Personal Quotation from this viewer.

Market Summary JSX		23/05/2003
739.9590		
+/-	6.3890	
%	0.8709	
Mkt Vol(mn)		292.080
Mkt Val(bn)		210.481
Mkt Freq		4,830

1. 2. 3.

PQ
Options
Close

Information contained

This viewer displays the current market summary of the Jakarta Stock Exchange (JSX), the Australian Stock Exchange (ASX), the Singapore Stock Exchange (SGX), the Kuala Lumpur Stock Exchange (KLSE) or the Surabaya Stock Exchange (SSX). On this viewer, you can read the following information (please refer to the numbers on the picture above).

1. Composite index

This section shows the current composite index and the value/percentage differences between the current and previous day's composite index.

- **Green** shows the current price is higher than the previous day's closing price.
- **Red** shows the current price is lower than the previous day's closing price.
- **Black** shows the current price is the same as the previous day's closing price.

2. Advancers/Decliners/Unchanged

This section shows the number of stocks whose prices are advancing, declining or have remain unchanged (in comparison to the previous day's closing price).

3. Current total market volume and value and transaction frequency

This section shows a summary of current total market volume (in million shares) total market value (in billion Rupiah or SGD \$ or AUD \$ or Malaysian Ringgit depending on the market selected) and total transaction frequency of all stocks.

Market Summary JSX 23/05/2003

SW Mobile 07:15

739.0500

Market Summary Options

Exchange ► **JSX**

Advancers	43
	61
	20
	124
Mkt Val(bn)	292.080
Mkt Val(bn)	210.481
Mkt Freq	4,830

Change Done Cancel

User
Manual

Note: To switch from the JSX information to the SSX/SGX//ASX/KLSE information, click the Options softkey, a small pop up window will appear, select SSX/SGX/ASX/KLSE from the Exchange menu.

Note: In the free trial mode, the available market is JSX.

Personalized Quotation

Code	Exch.	Last (IDR)	Last Vol(Lot)	+/-	+/- %	Bid
TLKM	JSX	7050	1	100	1.44	
ASII	JSX	5400	2	100	1.89	

Information contained

Using Personal Quotation, you can keep track of individual stock information such as Last, Bid and Offer Value.

The information displayed in this viewer is for regular board and up to seven different stock codes can be displayed.

The information is displayed in color format for your convenience. The color code formats are:

- **Green** – the stock price is advancing in comparison to the previous day’s closing price.
- **Red** – the stock price is declining in comparison to the previous day’s closing price.
- **Black** – the stock price is the same as that in the previous day’s closing.

How to operate

To input and save a stock code

- Use the navigation button to move the cursor to an empty row **or** if all rows are already filled in, choose a row to replace (information on this row will be deleted).
- Click the Edit button. Now, the cursor will be on the Code column.
- Type in a stock code.

Personalized Quotation JSX

Code	Exch.	Last (IDR)	Last Vol(Lot)	+/-	+/- %	Bid
BMRI	JSX	1375	21	-25	-1.79	
BBRI	JSX	1500	0	0	0.00	
ISAT	JSX	3775	100	275	7.86	
TLKM	JSX	7050	1	100	1.44	
ASII	JSX	5400	2	100	1.89	

SW Mobile
09:46
Save
Cancel

- Click Save to save the stock code.

To replace a stock code with another one

- Use the navigation button to move the cursor to the selected row to replace.
- Click the Edit button. Now, the cursor will be on the Code column.
- Type in another stock code.
- Click Save to save the stock code.

To delete a stock code

- Use the navigation button to move the cursor to the selected row to delete.
- Click the Edit button. Now, the cursor will be on the Code column.
- Leave the Code column blank.
- Click Save to delete the stock code.
- A confirmation window will appear.
- Click Ok to delete the stock code.

Note: To switch from JSX information to SSX/SGX/ASX/KLSE information, click the Options softkey, a small pop up window will appear, select SSX/SGX/ASX/KLSE.

Note: To open Buy and Sell Queue (BSQ) viewer, select the BSQ softkey.

Note: In the free trial mode, only one stock code is allowed.

Personalized Quotation for SGX Market

Personalized Quotation SGX 23/05/2003

Code	Exch.	Last (SGD)	Bid (SGD)	Offer (SGD)	+/-	+/- %
DAT.SP	SGX	0.7400	0.7350	0.7400	-0.0050	
STE.SP	SGX	2.1000	2.1000	2.1100	0.0300	
MML.SP	SGX	0.5300	0.0000	0.0000	0.0100	

SW Mobile 8:06 AM

BSQ
Options
Edit
Close

Personal Quotation for SGX market can be viewed by selecting SGX from the PQ Options such as the following:

Personalized Quotation JSX 23/05/2003

Code	Exch.	Last (IDR)	Bid (IDR)	Offer (IDR)	+/-	+/- %
ISAT	JSX					
LMAS	JSX					
BBCA	JSX					
BMRI	JSX					
BBRI	JSX					

SW Mobile 8:03 AM

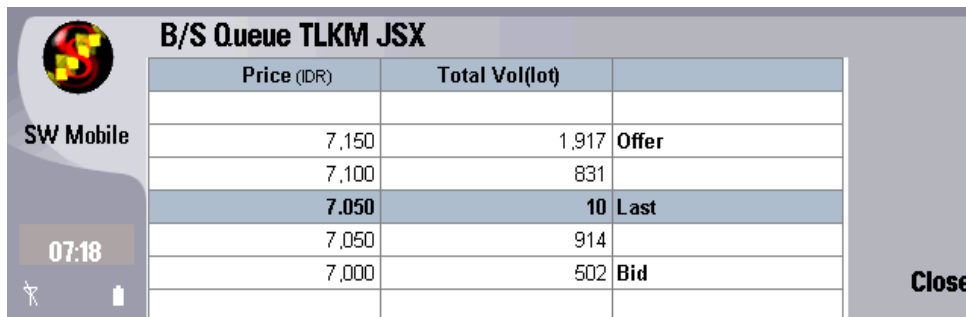
OK

PQ. Options

Exchange ▶ ISX
SSX
SGX
ASX
KLSE

Cancel

Buy and Sell Queue



Price (IDR)	Total Vol(lot)	
7,150	1,917	Offer
7,100	831	
7,050	10	Last
7,050	914	
7,000	502	Bid

User
Manual

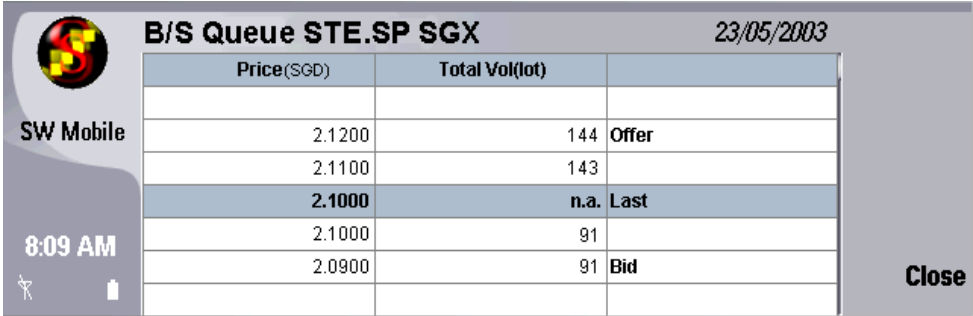
Information contained

Buy/Sell Queue displays the buy and sell queue of an individual stock. The **Bid** section sorts the stocks from the highest bid price, while the **Offer** section sorts them from the lowest offer price. The **Last** section displays the last done price and volume.

Note : The BSQ viewer can only be opened from PQ.

Buy and Sell Queue for SGX Market

User Manual



B/S Queue STE.SP SGX		23/05/2003	
Price(SGD)	Total Vol(lot)		
2.1200	144	Offer	
2.1100	143		
2.1000	n.a.	Last	
2.1000	91		
2.0900	91	Bid	

Note : The BSQ viewer can only be opened from PQ for SGX market.

Currency Quote

Currency Quote		23/05/2003			
Code	Bid/Ask	Low	High	Time	
EURUSD	1.2391/94	1.2362	1.2433	14:12:36	Edit Close
USDIDR	8,560/66	8525	8572	14:11:14	
USDJPY	104.27/35	103	105	14:11:10	
AUDUSD	0.75/80	0.70	0.78	14:11:09	
GBPUSD	1.83/87	0.80	0.90	14:11:08	
EURJPY	127.59/71	127.50	127.75	14:11:06	
USDCHF	1.1996/99	1.1977	1.2076	14:11:05	

Information contained

This viewer shows currency information such as: USDIDR, AUDIDR, SGDIDR, USDEUR, USDJPY.

The Bid/Ask column displays the current bid and ask values. The High and Low columns show the highest and lowest rates up to now for the current trading day.

Example:

The Bid/Ask value of USDIDR = 9.005.00/8.00, then 1 US\$ = 9.005 Rupiah(IDR) for the bid rate and 1 US\$ = 9.008 Rupiah(IDR) for the offer rate. The available currencies are:

Code
USDEUR
USDJPY
EURUSD
GBPUSD
CHFUSD
USDIDR
SGDIDR
AUDIDR
HKDIDR
USDMYR
USDTHB
USDTHB
HKDEUR
HKDGBP
JPYEUR

Note: In the free trial mode, only one currency code is allowed.

How to operate

To input and save a currency code

- Use the navigation button to move the cursor to an empty row **or** if all rows are already filled in, choose a row to replace (information on this row will be deleted).
- Click the Edit button. Now, the cursor will be on the Code column.
- Type in a currency code.

Code	Bid/Ask	Low	High	Time
EURUSD	1.2388/93	1.2362	1.2433	14:17:15
USDIDR	8,556/62	8525	8605	14:15:40
USDJPY				

- Click Save to save the currency code.

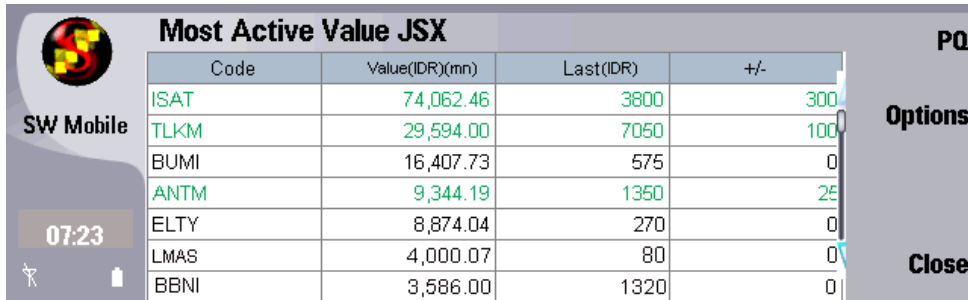
To replace a currency code with another one

- Use the navigation button to move the cursor to the selected row to replace.
- Click the Edit button. Now, the cursor will be on the Code column.
- Type in another currency code.
- Click Save to save the currency code.

To delete a currency code

- Use the navigation button to move the cursor to the selected row to delete.
- Click the Edit button. Now, the cursor will be on the Code column.
- Leave the Code column blank.
- Click Save to delete the currency code.
- A confirmation window will appear.
- Click Ok to delete the currency code.

Most Active



The screenshot shows a mobile application interface for 'Most Active Value JSX'. It features a table with columns for Code, Value(IDR)(mn), Last(IDR), and +/-, and a right-hand panel with 'Options' and 'Close' buttons. The time is 07:23 and the user is SW Mobile.

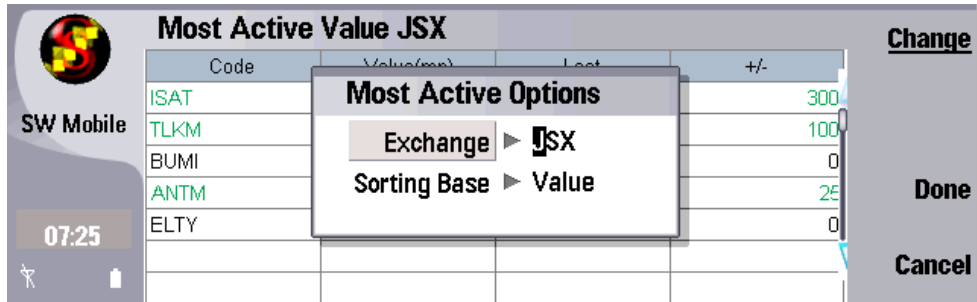
Code	Value(IDR)(mn)	Last(IDR)	+/-
ISAT	74,062.46	3800	300
TLKM	29,594.00	7050	100
BUMI	16,407.73	575	0
ANTM	9,344.19	1350	25
ELTY	8,874.04	270	0
LMAS	4,000.07	80	0
BBNI	3,586.00	1320	0

Information contained

This viewer enables you to view the most active stocks for the current trading day. You can see the information based on trading value or trading frequency.

The color code formats are:

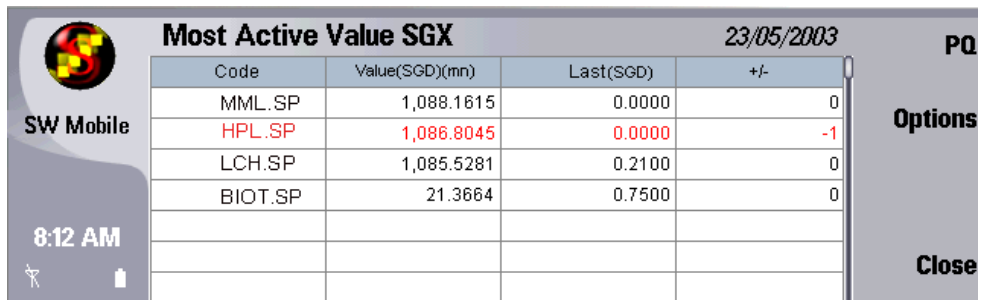
- **Green** – the stock price is advancing in comparison to the previous day's closing price.
- **Red** – the stock price is declining in comparison to the previous day's closing price.
- **Black** – the stock price is the same as that in the previous day's closing.



Note: To see information based on frequency, click the Options softkey, a pop up window will appear, select Frequency from the Sorting Base option menu.

Note: To switch from JSX information to SSX/SGX/ASX /KLSE information, click the Options softkey, a small pop up window will appear, select SSX/SGX/ASX/KLSE from the Exchange option menu.

The following is Most Active Value for SGX market:



Most active stock information for SGX/ASX/KLSE can only be sorted based on the Value.

Note: In the free trial mode, only two most active stocks are displayed.

Running Trade Equity

TX Time	Code	Last	Vol(lot)	+/-	+/- %	Buyer	Seller
11:14:53	ISAT	3750	100	250	7.14	DP	LG
11:14:52	LTLS	285	14	0	0.00	FA	EP
11:14:51	SIPD	25	500	0	0.00	BQ	LG
11:14:51	SIPD	25	259	0	0.00	BQ	LG
11:14:49	ISAT	3750	5	250	7.14	DP	IN
11:14:40	ISAT	3550	250	25	0.71	AT	AT
11:14:33	APIC	40	100	-10	-20.00	CP	BD

Information contained

This viewer displays all transactions on the Jakarta Stock Exchange (JSX), Australian Stock Exchange (ASX) or the Surabaya Stock Exchange (SSX) market live on one screen including the transactions at regular and non-regular boards. Incoming new transactions will be displayed at the top of the viewer.

The color code formats are:

- **Green** – the stock price is advancing in comparison to the previous day's closing price.
- **Red** – the stock price is declining in comparison to the previous day's closing price.
- **Black** – the stock price is the same as that in the previous day's closing.

Trading board color

To differentiate between the regular and non-regular trading board, you can see the background color of the transaction. For regular board, the color is **white**.

Note: To switch from JSX information to SSX/ASX information, click the Options softkey, a small pop up window will appear, select SSX/ASX.

Running Trade Futures



Running Trade - Future SSX		23/05/2003						
TX Time	Code	Last	Vol(lot)	+/-	+/- %	Buyer	Seller	
11:13:46	LQFSX-0400	161.90	1	1.41	0.88	-	-	
						-	-	
						-	-	
						-	-	
						-	-	
						-	-	
						-	-	

Information contained

This viewer displays all SSX futures transactions on the market live on one screen. Incoming new transactions will be displayed at the top of the viewer. The color code formats are:

- **Green** – the stock price is advancing in comparison to the previous day’s closing price.
- **Red** – the stock price is declining in comparison to the previous day’s closing price.
- **Black** – the stock price is the same as that in the previous day’s closing.

To open the viewer

- Click Options when you open the running trade viewer. A pop-up window will appear.
- Select Futures (see the following picture), make sure the exchange is SSX.



Running Trade Fixed Income

TX Time	Code	Last	Vol(lot)	+/-	Buyer	Seller	Type
11:34:00	GBRB0010	108.26	10	0.57	-	-	
11:32:00	GBRB0010	108.24	10	0.54	-	-	
11:30:00	GBRB-FR0	107.25	10	2.10	-	-	
					-	-	
					-	-	
					-	-	
					-	-	

Information contained

This viewer displays all SSX fixed income transactions on the market live on one screen.

Incoming new transactions will be displayed at the top of the viewer.

The color code formats are:

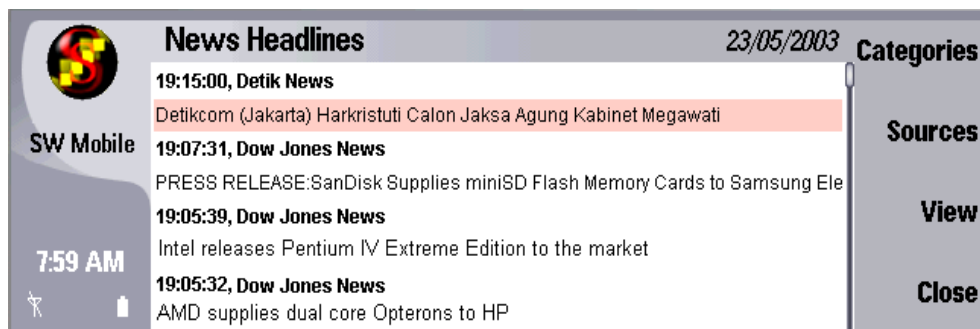
- **Green** – the stock price is advancing in comparison to the previous day’s closing price.
- **Red** – the stock price is declining in comparison to the previous day’s closing price.
- **Black** – the stock price is the same as that in the previous day’s closing.

To open the viewer

- Click Options when you open the running trade viewer. A pop-up window will appear.
- Select Fixed Income (see the following picture), make sure the exchange is SSX.



News



Information contained

This viewer displays news, announcements, and other text-based information contributed by the Jakarta Stock Exchange, the Surabaya Stock Exchange, AFX-News, Dow Jones News, StockWatch News and Detik.

Note News sources that you can access depend on the features you subscribe.

How to Operate

The view the news details:

- Select the news headline to view.
- Click on the View softkey.

To filter the news, you can select the Categories or Sources softkey.

News Sources

News Source consists several different sources, such as the Jakarta Stock Exchange, the Surabaya Stock Exchange, AFX-News, Dow Jones News, StockWatch News and Detik.

News Source	Price	Status
AFX News	5,000	Enabled
Dow Jones News	5,000	Enabled
StockWatch News	2,500	Enabled
DJ Limas News	2,500	Enabled
Prospektif	2,500	Enabled
Detik	2,500	Enabled
Tempo News	2,500	Enabled

- To filter news based on the source, change the status from enabled to disabled or vice versa and click the Save softkey. The News price is in Indonesian Rupiah.

News Categories

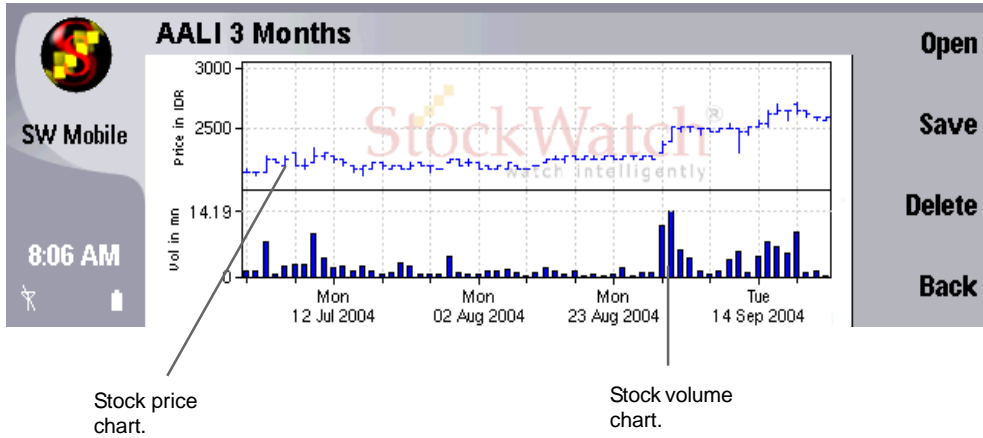
The news categories are divided into two categories, which are **Subject** and **Industry**. You should give at least one choice in each category.

News Category

Option ▶ Subject

Industry

Charts



Information contained

Chart provides stock charts within StockWatch Mobile. To quote a stock chart an user has to input the stock code and the chart period. The user can input up to 20 stock codes and they are saved to the local memory of mobile phone. The chart periods are 3 months, 6 months and 1 year.

To input and save a stock code

- Select Charts from the StockWatch Mobile Main menu.
- Chart Options will be displayed, select New Chart.
- The following window will appear, click the Add Stock softkey button.

JSX Stock Chart

Stock Code :

Chart Period :

To display chart press OK.

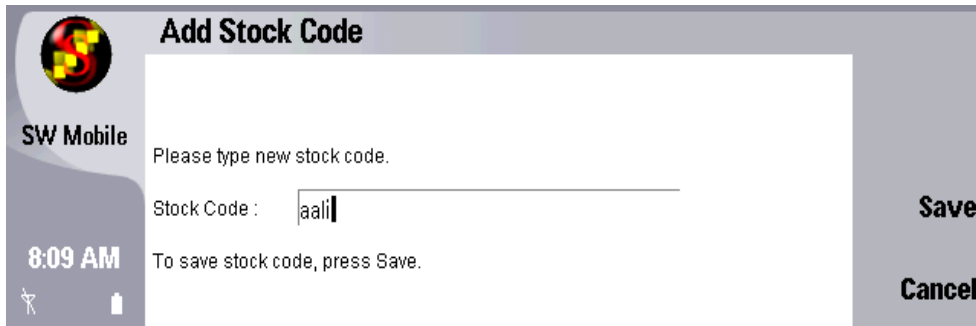
Delete

Add Stock

Ok

Cancel

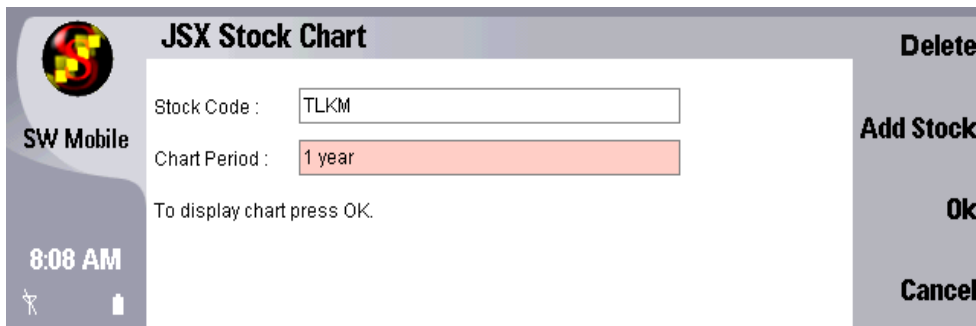
- The Add Stock Code window will appear, type in a new stock code and click the Save softkey to save it.



- After saving the stock code, the stock code will be available to select from the Stock Code drop-down list (see the next section for details).

To display and save a stock chart

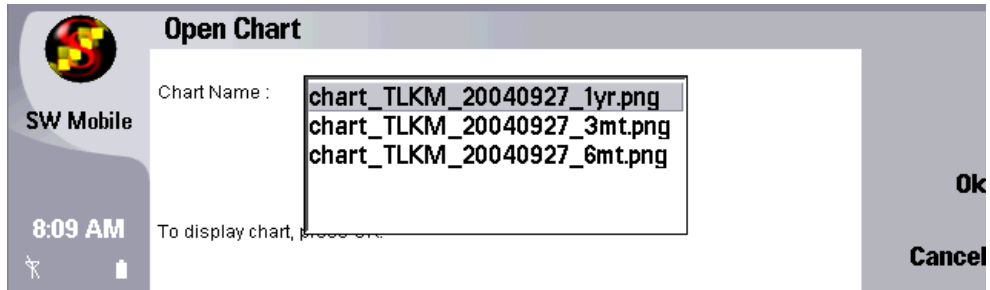
- Select a stock code from the Stock Code drop-down list and chart period, see the following picture:



- Select the Ok softkey to display the chart. The chart will be downloaded from Limas chart server to your mobile phone if the chart is not available in your mobile phone local memory.
- After displaying the chart, you can save the chart by clicking the Save softkey. By saving the chart, you do not need to download the chart again if you want to display it.

To open the saved stock chart

- Select Charts from the StockWatch Mobile Main menu.
- Chart Options will be displayed, select Saved Chart.
- The following window will appear.



- Select one chart file here to display the chart.
The naming format of the file is:
Chart_stockcode_yearmonthdate_chartingperiod.

Major Indices

Exchange	Index	+/-	+/- %
Australia All Ordinaries Index	4,133.3999	29.6997	0.7237
Paris CAC 40 index	4,178.2500	0	0
Nasdaq Composite Index	2,087.8601	19.6401	0.9496
Frankfurt Dax Index	4,527.1699	0	0
Hang Seng Index	13,866.1299	-6.9404	-0.0500
Dow Jones Index	10,549.8701	82.3896	0.7871
Kuala Lumpur Composite Index	860.4800	-1.4800	-0.1717

User
Manual

This viewer displays the latest values of major indices in Asia Pacific plus The United States indices.

The major Indices covered in this viewer are:

- Australia All Ordinaries Index
- Nasdaq Composite Index
- Dow Jones Industrial Average
- NYSE Composite Index
- Frankfurt Dax Index
- NZSE40 Composite Index
- FTSE 100 Index
- Paris CAC 40 index
- Hang Seng Index
- Seoul Composite Index
- Kuala Lumpur Composite Index
- Singapore Straits Time
- Manila Composite Index
- Taipei Weighted Index
- Nasdaq 100 Index
- Tokyo Nikkei 225

SMS Alerts

SMS Alerts consist of stock, news and currency alerts.

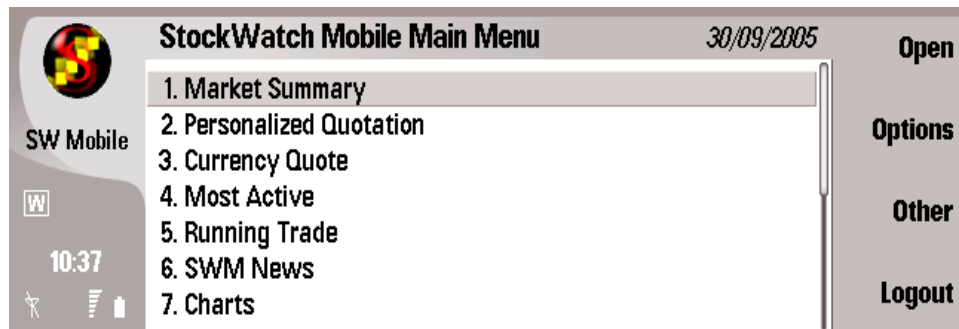
The SMS stock alert enables you to monitor stock price movements using SMS.

It will send you a SMS when your stock monitoring parameters are exceeded. You can set your parameters based on stock price alerts (the highest and lowest price parameters).

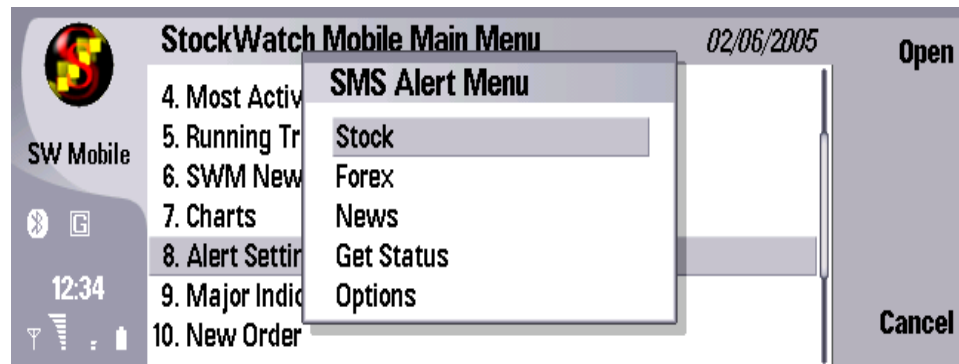
To use the SMS Alerts you must configure the SMS Alerts feature. You can configure it using StockWatch Mobile while you are connected to the Internet (online/GPRS mode) or not (offline mode/SMS mode).

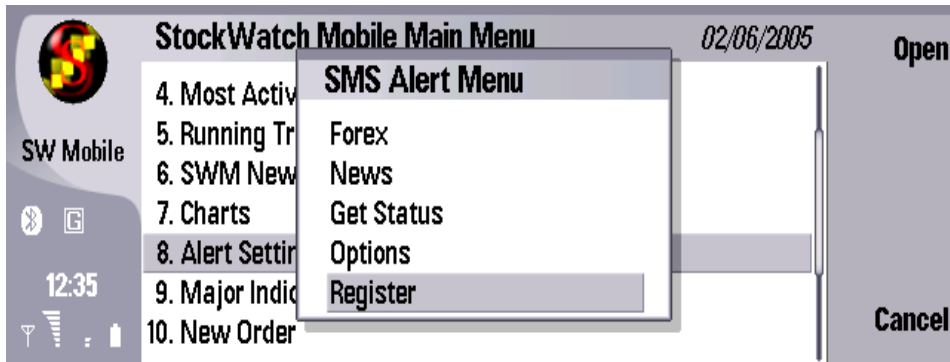
To configure the SMS Alerts feature using the online mode:

- Make sure that you have successfully registered your StockWatch Mobile account using the New or Expert feature of StockWatch Mobile.
- Open StockWatch Mobile and make sure you have successfully opened it using the GPRS connection. Next, from the StockWatch Mobile's main menu, select Alert Setting.

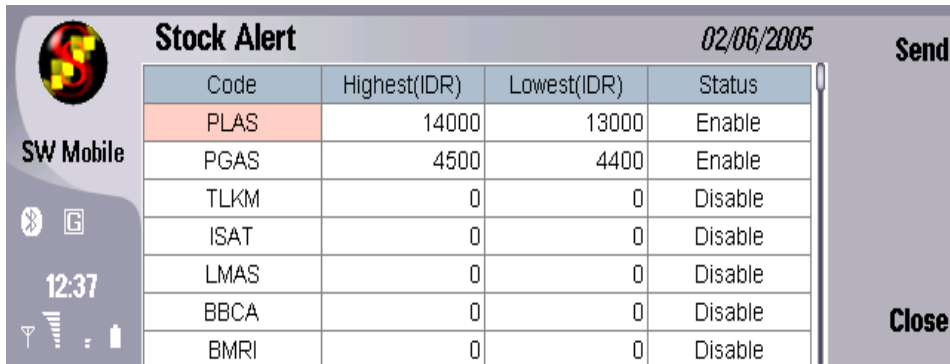


This viewer will be shown:





- To configure the Stock Alert Settings, select Stock. This viewer will be shown:



- If you have set the Personal Quotation (PQ) viewer before, then the PQ stock codes will be available in this viewer, otherwise you have to type in new stock codes to monitor in the Code column. (These new stock codes will be shown in the PQ viewer, after you re-login your StockWatch Mobile)
- Type in the highest and lowest stock price parameters for the selected stock.
- You need to enable the selected stock alert parameters by changing its status to Enable.
- Finally, select Send to save the parameters.

Note: When your GPRS connection is off and the stock price hits the upper or lower limit parameter, you will receive a SMS alert, Check your mobile phone's Messaging Inbox to open the SMS alert.

- To configure the Currency Alert Settings, select Forex. This viewer will be shown:

Currency	Highest(IDR)	Lowest(IDR)	Status
SGD	9400	9350	Enable
HKD	200	150	Enable
AUD	1500	1450	Enable

- Type in new currency codes to monitor in the Currency column.
- Type in the highest and lowest rates against Indonesian Rupiah (IDR) for the selected currency.
- You need to enable the selected currency alert parameters by changing its status to Enable.
- Finally, select Send to save the parameters.
- To configure the News Alert Settings, select News. This viewer will be shown

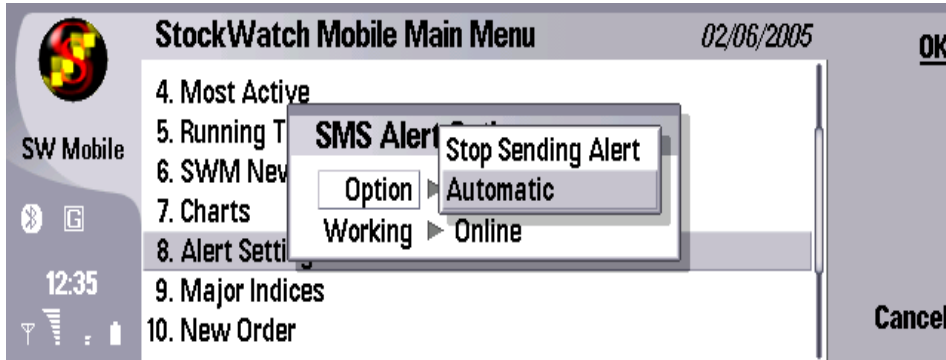
Code	Sources	Keywords	Status
STW	Stockwatch News	sospol	Enable
STW	Stockwatch News	sosial	Enable
STW	Stockwatch News	market	Enable
AFX	AFX News	ekonomi	Enable
AFX	AFX News	eko	Enable

- In the Code column, select the news source.
- Type in the news keyword to alert for the selected news source in the Keyword column.
- You need to enable the selected news alert parameter by changing its status to Enable.
- Finally, select Send to save the parameter.

- You also need to make sure that the SMS Alert setting value is set to Automatic.

To set it to Automatic:

- Select Options from the SMS Alert viewer.
- Next, the SMS alert option window will appear.



- In Option, select Automatic and click Save.

Note: The Working Mode is used if you want to switch from the online mode to the offline mode or vice-versa.

To configure the SMS Alerts feature using the offline mode:

- In the offline mode your StockWatch Mobile will use SMS to configure the SMS alerts.
- To open the SMS alert configuration, open StockWatch Mobile, in the SWM Mode screen, select Offline and then SMS Alert.
- The required steps to configure the SMS Alerts in this offline mode is the same as in the online mode.

Note: In the offline mode, you cannot change currency/stock codes or news sources. However, you can change other parameters. You can also add a new stock/currency code or news source to alert.

To obtain the SMS Alert subscription details:

In the online mode:

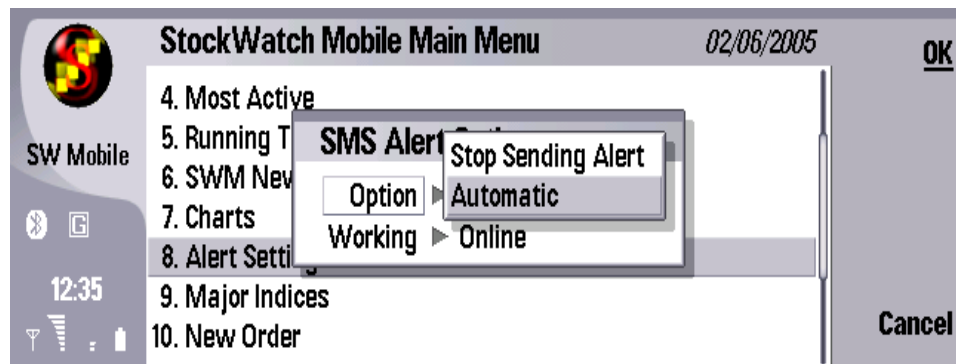
- Select Get Status in the SMS Alert viewer. Next, you can check the SMS features you have subscribed to by opening all SMS alert viewers. These viewers will display all enabled SMS alerts.

In the offline mode:

- Select Get Status in the SMS Alert viewer, a SMS will be sent to your mobile phone. Open the SMS to show a list of SMS features you have subscribed to.

To stop all SMS Alert subscriptions:

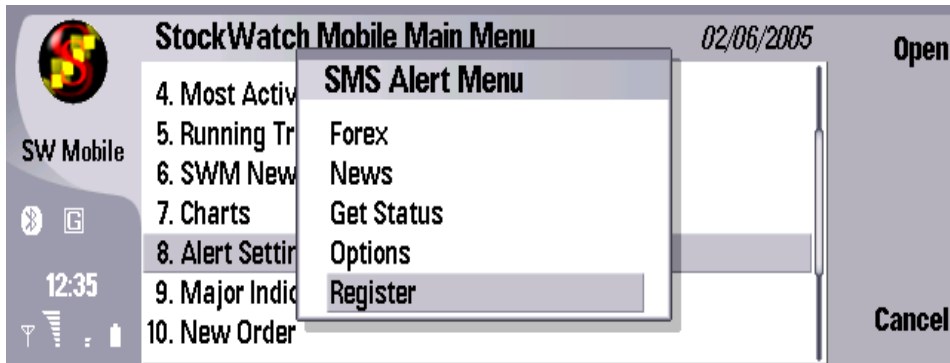
- Select Options from the SMS Alert viewer.
- Next, the SMS alert option window will appear.



- In Option, select Stop Sending Alerts and click Save.
- All SMS alerts will be inactive.

Note: You can re-activate them by changing the SMS Alert Option's value to Automatic.

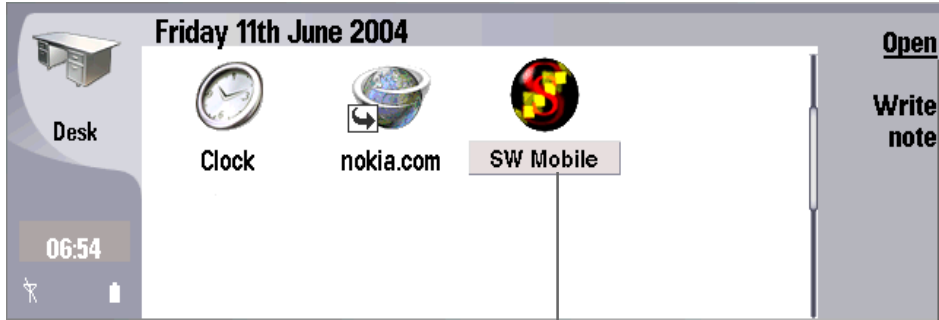
To register your StockWatch Mobile/Retail account manually for the SMS Alert subscription:



- Select Alert Setting from the StockWatch Mobile Main Menu.
- Select Register from the SMS Alert Menu pop-up window.

Note: You need to register your StockWatch Mobile/Retail account manually for the SMS Alert subscription if the automatic registration done by the application is failed.

Running StockWatch Mobile (Periodic Update Mode)

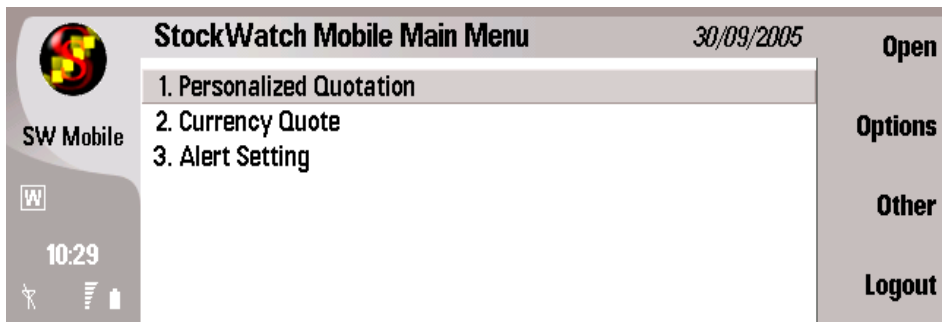


StockWatch
Mobile icon.

Click this
softkey button
to open
StockWatch
Mobile.

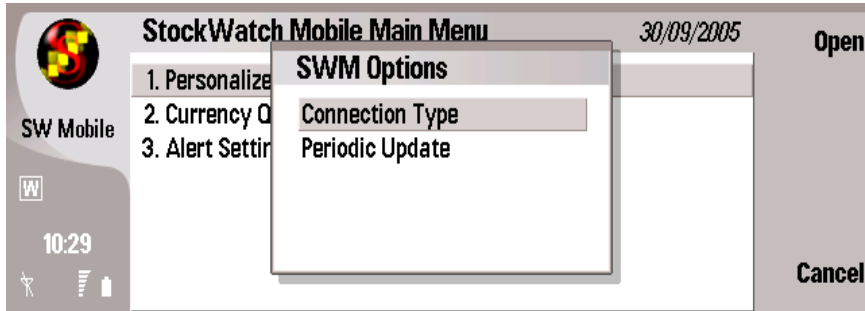
To run the application

- Select the SW Mobile icon by using the navigation button and click on the navigation button. A StockWatch Mobile disclaimer screen will appear, Select Ok to continue.
- A SWM Mode screen will appear, select Offline. Next, select Periodic Update. The following menu will appear:

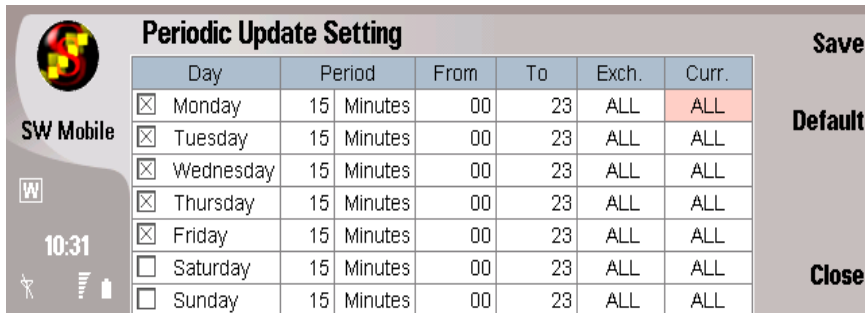


To configure the Periodic Update Mode

- Select Options from the StockWatch Mobile Main Menu.



- Select Periodic Update.



- In the Day column, select the day when the periodic update setting will be applied by marking the X mark.
- In the Period column, type in the periodic update time interval.
For example: if the value is 5 minutes then all viewers in the Periodic Update Mode will be updated every 5 minutes.
- In the From column, select the starting time of the periodic update period for a selected day.
- In the To column, select the ending time of the periodic update period for a selected day.
- In the Exchange (Exch) column, select the market.
- In the Currency column the available value to select is All (all currencies)
- Select Save to save the configuration.

To open viewers in the Periodic Update Mode

- Select a viewer to open and open it by clicking the Open softkey.
- To input a PQ or Currency code, see the previous explanations in the Online Mode section.
- **The time column shows the last periodic update time performed.**
- The viewer contents will be updated periodically based on the latest periodic update setting.

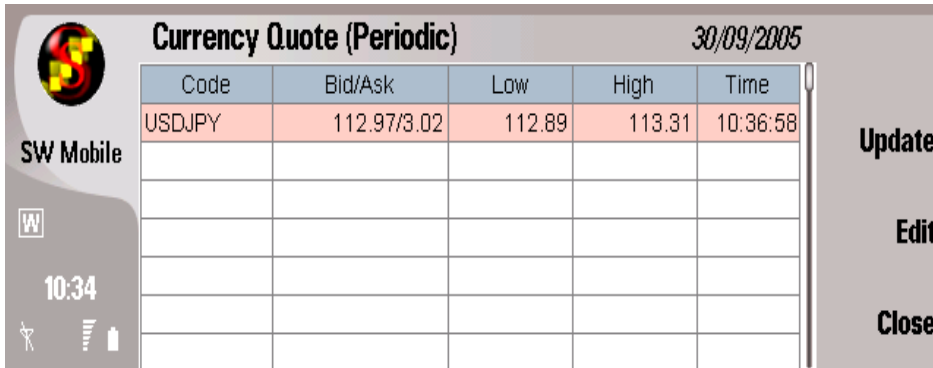
Code	Offer(IDR)	+/-	+/- %	Last Vol(Lot)	Time
TLKM	5300	100	1.9231	0	10:30:41

- In PQ, if you want to obtain the latest data now, select Options.

Code	Offer			Lot)	Time
TLKM				20	10:38:01

- Select Update Now. The latest data will be downloaded.

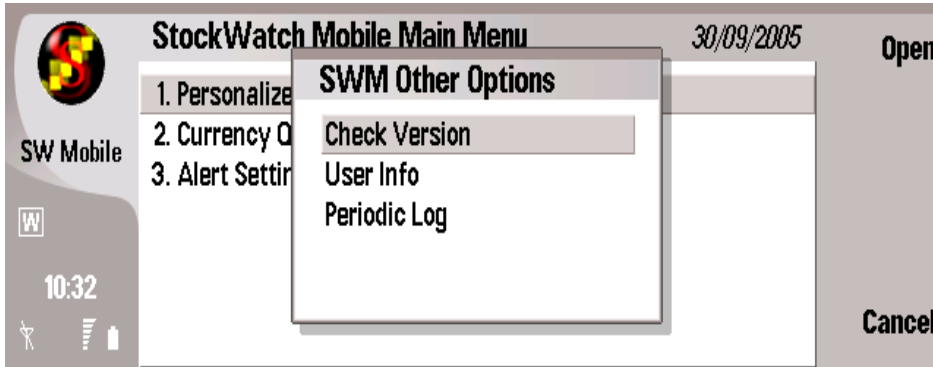
- In CQ, if you want to obtain the latest data now, select Update.



- The latest data will be downloaded.

To see the Periodic Update Mode log

- Select Other from the StockWatch Mobile Main Menu.

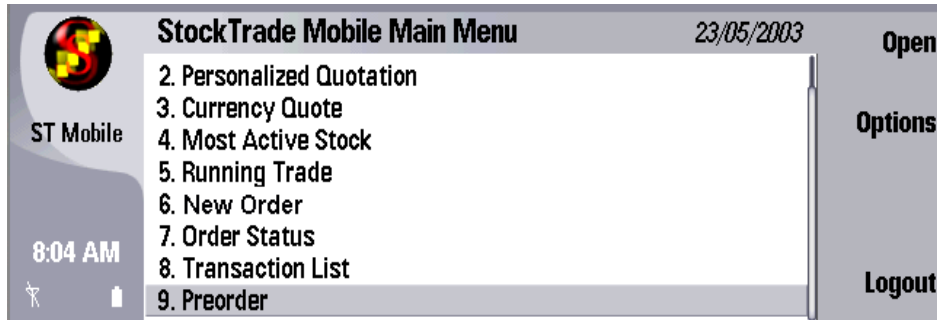


- Select Periodic Log.

Chapter 2: StockTrade Mobile Viewers

StockTrade Mobile Viewers

You can find the StockTrade Mobile's viewers under the StockWatch Mobile main menu such as the following:



StockTrade Mobile consists of:

- **New Order**

New Order viewer is used to create and submit a new buy/sell order.

- **Order Status**

Order Status will display the status of the order submitted to a related broker.

- **Transaction List**

Transaction List will display the list of done orders.

- **Preorder (offline version)**

Using this viewer you can create orders while your mobile phone is not connected to your GPRS provider and save the orders to be submitted later. See page 54 for details.

- **Preorder (online version)**

This viewer is used to submit any pending orders that you created before.

The online version of Preorder viewer is located in the StockWatch Mobile main menu. (See the picture above).

Orders

New Order JSX Equity 23/05/2003 **Submit**

Code	AALI	Expiration	Day
Action	Buy	Broker Code	KW
Price (Rp)	2,500	User ID	BRAYNT
Vol. (Lot)	10	Password	*****

Close

ST Mobile 6:25 AM

User
Manual

To submit a buy/sell order:

- In the Code text box, type in a stock code you want to buy or sell.
To type in the stock code, select the Code row using the navigation button of your mobile phone and click the navigation button. The cursor will be on the Code row. Now, you can start typing a stock code.
- In the Action input box, select Buy if you want to buy or Sell if you want to sell the intended stock.
- Type in the bid/offer price in the Price text box.
- In Volume, input the stock volume to sell/buy in Lot.
- In Expiration, select one of the two available values. The two available values are:
 - a) **Day**: the order will be valid for the whole trading day.
 - b) **Session**: the order will be valid only for current trading session.
- In Broker Code, select your broker code from the broker code list. To open the list, select the Broker Code row using the navigation button and click the button.
- In User Id, input your user id for the selected broker.
- In the password input box, type in your password for the selected broker.
- Finally, click on the Submit softkey.
- A confirmation window will appear, click Ok to proceed. Your order will be sent.
- If the submit process is successful, an order submission status screen will appear, click Ok if you want to send another order or click Exit to return to the StockWatch Mobile main menu.

Note : You can only submit the order to The Jakarta Stock Exchange's Regular Board.

Note : To find out the status of your submitted orders, see the Order Status viewer

Order Status

Code	Time	Clt. Ord. No	Mkt. Ord. No	Action	Price	Expiry	Exch
AALI	06.27.49	82781123	82781123	Buy	1,600	Day	JS
ALLI	01.11.50	31182226	31182226	Sell	1,700	Session	JS

All orders submitted to your broker are recorded, and their statuses are displayed in this viewer. The available statuses are: **In Process**, **Open**, **Cancelled**, **Rejected**, **Failure**, and **Expired**.

Besides the order status, this viewer also displays **Remark**. A remark of an order is a previous status of the order. For example: if an order has both an “In process” status and an “Accepted by Back Office” remark, then this means the order was processed by the broker but is not processed yet by the JSX’s trading engine. The order is now still in process. The following is the explanation of the viewer’s columns:

1.	Code	Displays the stock code
2.	Broker	Displays the broker code
3.	Time	Displays the time when the user submitted the order Format: HH:MM:SS
4.	Clt. Ord. No.	Displays the Client Order Number. This order number is generated by StockTrade
5.	Mkt. Ord. No.	Displays the Market Order Number. This order number is generated by the JSX’s Trading Engine
6.	Action	Displays the related type of an order (Buy/Sell)
7.	Price	Displays the order’s bid/offer price.
8.	Expiry	Displays the related order’s expiration (Day/Session)
9.	Exch.	Displays the active stock exchange ->JSX
10.	Brd.	Displays the active stock exchange’s board ->RG (regular board)
11.	Vol. (Lot)	Displays the sent order’s volume in lot
12.	Lvs. Vol. (Lot)	Displays the remaining quantity of an order which has not been processed in the market
13.	Status	Displays the related status of an order
14.	Remarks	Displays the related remark of an order

The following table shows order statuses with its remarks.

Status	Remark	Explanation
In process	Accepted by Back Office	The order has been processed by your broker's server but the order is not processed yet by the JSX's trading engine.
Open		The order has been received by the JSX's trading engine. Now the order is open for a buy/sell transaction.
Open	Partially done	A buy/sell transaction has been partially processed by the JSX. The remaining order's volume can be seen on the Lvs(Leaves) Vol column.
Open	Amended	An amended sell/buy order
Open	Amend rejected by Back Office	A buy/bell amend order request is rejected by your broker's server
Open	Amend rejected by Exchange	A buy/sell amend order request is rejected by the JSX
Open	Cancel rejected by Back Office	A buy/sell cancel order request is rejected by your broker's server
Open	Cancel rejected by Exchange	A buy/sell cancel order request is rejected by the JSX
Cancelled		A cancelled sell/buy order
Cancelled	Partially done	A buy/sell cancel order request is partially processed by the JSX. The remaining order's volume can be seen on the Lvs(Leaves) Vol column.
Rejected	Rejected by Back Office	An order has been sent to your broker's server but then the order is rejected
Rejected	Rejected by Exchange	An order has been sent to the JSX but then the order is rejected
Expired		The order is expired
Failure	Internal reject	This can happen when the connection to the JSX is cut or the JSX is not trading yet.

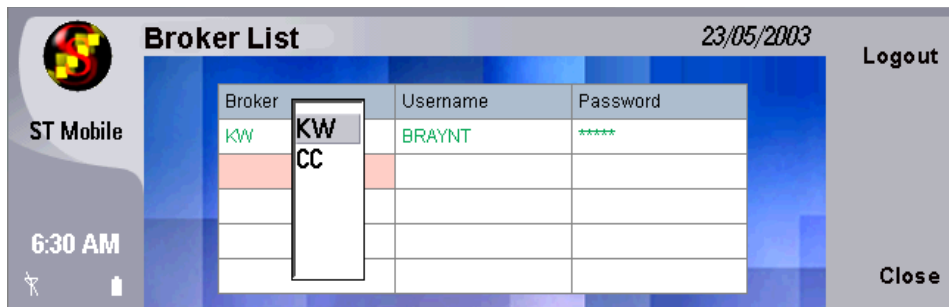
The order status information is displayed in color format for your convenience. The color code formats are:

- **Green** – indicates buy orders.
- **Red** – indicates sell orders.

Note : Done transactions are displayed in Trade List, see page 40 for details.

How to Operate

- If you send orders successfully **and** the StockTrade Mobile application is still open, you can open the Order Status viewer to see the orders' statuses.
- If you send orders successfully **but** afterward you close StockTrade Mobile, then to see the statuses of the submitted orders after you reopen StockTrade Mobile:
 - Select Order Status, the following window will appear.



- In Broker, input a broker code. To input a broker code: select the Broker row using the navigation button and click the button. Next, a broker code list will appear, select a broker code.
 - In Username, input your username for the related broker.
 - In Password, input your password for the related broker.
 - Click on the navigation button to submit.
 - If the login process is successful, **the font color for the related broker will turn to green.**
 - Repeat the previous steps to see your order status at the other brokers.
- Using this viewer, you can also amend and cancel an order.

Amending an Order

This feature allows you to edit the submitted order that has an **open** status. You can edit only the price and volume of an order.

To amend an order:

1. Select an **open** order to amend.
2. Select Amend.
3. Make the amendment and click the Ok softkey.

Amend Order 23/05/2003

Action	Buy	Board	RG
Code	AALI	Exchange	JSX
Price	1,600	Vol. (Lot)	10

ST Mobile 6:28 AM

OK Cancel

Canceling an Order

To cancel the order:

1. Select an **open** order to cancel.
2. Select Cancel. A confirmation window will be displayed. Click Ok to proceed.

Transaction List

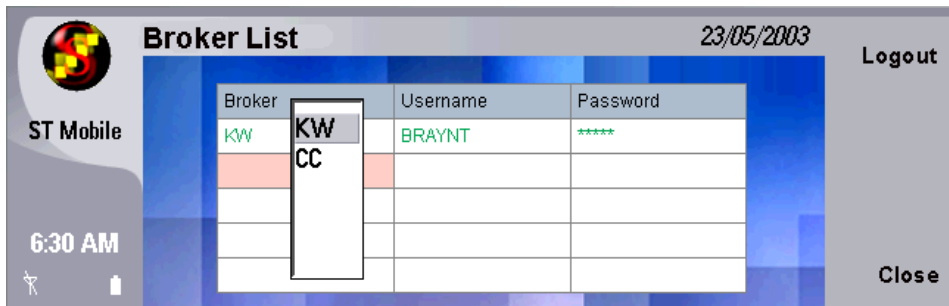


With **Transaction List**, you can display comprehensive information on buy and sell **done** transactions for the current trading day.

Note: Mkt. trd. (market trade) no. is a transaction number generated by the JSX's trading engine when the transaction is done. One Mkt. ord. (market order) number can have several Mkt. trd. (market trade) numbers as several partially done transactions can occur for a given market order number. This also applies to Clt. trd. (client trade) number generated by your broker server.

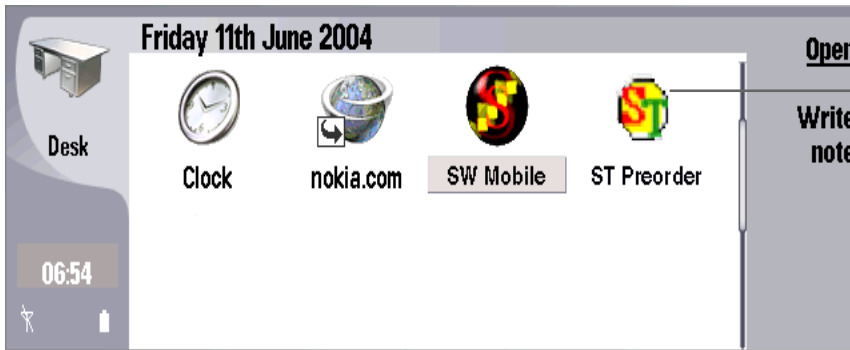
How to Operate

- If you send orders successfully **and** the StockTrade Mobile application is still open, you can open the Transaction List viewer to see the list of today done orders.
- If you send orders successfully **and** afterward close StockTrade Mobile, then to see the list of today done orders after you reopen StockTrade Mobile:
 - Select Transaction List, the following window will appear.



- In Broker, input a broker code. To input a broker code: select the Broker row using the navigation button and click the button. Next, a broker code list will appear, select a broker code.
- In Username, input your username for the related broker.
- In Password, input your password for the related broker.
- Click on the navigation button to submit.
- If the login process is successful, the font color for the related broker will turn to green.
- Repeat the previous steps to see your today done orders at the other brokers.

Preorder (offline version)

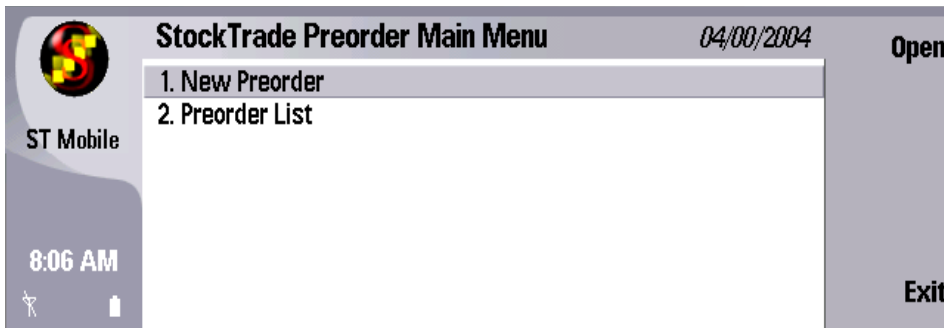


StockTrade
Preorder
(offline
version).

This viewer allows you to create orders while your mobile phone is not connected to your GPRS provider and save the orders to be submitted later to the JSX's Regular Board.

The StockTrade Preorder (offline version) main menu are:

- New Preorder
- Preorder List, see the following picture for details:



New Preorder

Using New Preorder, you can create many orders to be submitted to a broker in one file. The file is password protected.

To create many orders to be submitted to a broker in one file:

- Open New Preorder. A Set Broker Code pop-up window will appear.
- You need to input your broker code here and click the Ok softkey to save it.
- ST Preorder window will be displayed, select Edit.

Code	Action	Exch.	Price (Rp)	Vol (Lot)	Expiration	Board	Type

- ST Preorder input form will be displayed.

Code	AALI	Expiration	Day
Action	Buy	Exchange	JSX
Price (Rp.)	1,500	Board	RG
Vol. (Lot)	10	Type	Limit

Here, you can input the stock code, the order type (buy or sell), the bid/offer price, the volume and the order expiration (day or session).

- Click the Save softkey to save the order. Your saved order will be displayed on the ST Preorder viewer.

Code	Action	Exch.	Price (Rp)	Vol (Lot)	Expiration	Board	Type
AALI	Buy	JSX	1,500	10	Day	RG	Limit

If you want to input another order you can click again the Edit softkey. Otherwise, you can finally save the order to a file.

- To save the order to a file, select Save from the ST Preorder viewer.
- You will be asked to input a file password. Click Ok to save the password and the file.

Preorder List

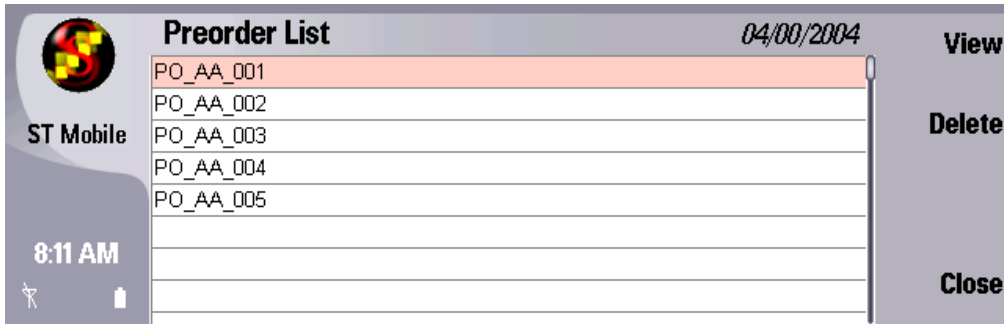
- After saving the file and its password, you can see, edit, or delete the file using The Preorder List viewer.

PO_AA_001
PO_AA_002
PO_AA_003
PO_AA_004
PO_AA_005

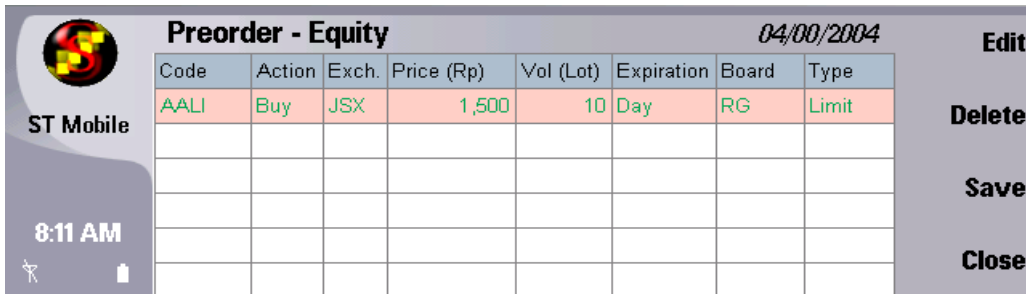
Note: The preorder file name format is PO_{broker_code}_xxx, where xxx = sequence number.

To edit an order in a Preorder file

- Select the preorder file to edit.
- Click the Option softkey and select View.



- You will be asked the file's password.
- If the file's password checking process is successful, the content of the file will be displayed.



Note: If you forget the password, you cannot edit, delete or send the preorder file. The only way to remove the file from your mobile phone is by uninstalling the Preorder application (the offline version). This also means that all of your existing preorder files will be removed.

- Select an order to edit in the Preorder List viewer using the navigation button and click the Edit softkey.
- Here, you can only edit the price and volume of the order. Save the order after editing it.

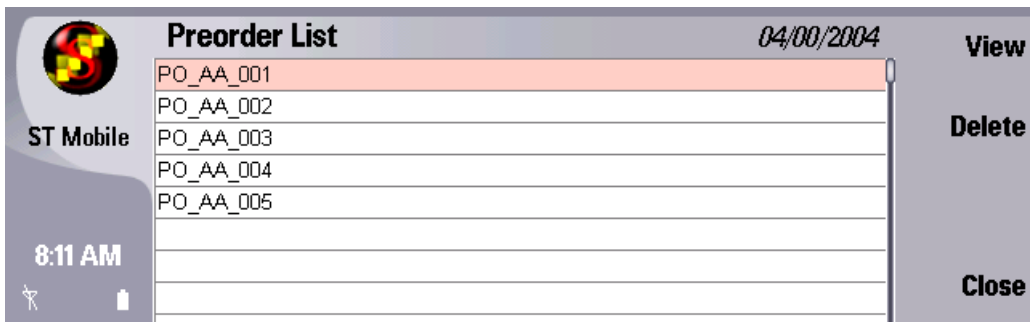
To delete an order in a Preorder file

- Select an order to delete in the Preorder List viewer using the navigation button. Next, select Delete. See the following picture for details:



To delete a Preorder file with all of its contents

- Select a preorder file to delete in the Preorder List viewer using the navigation button. Next, select Delete. See the following picture for details:

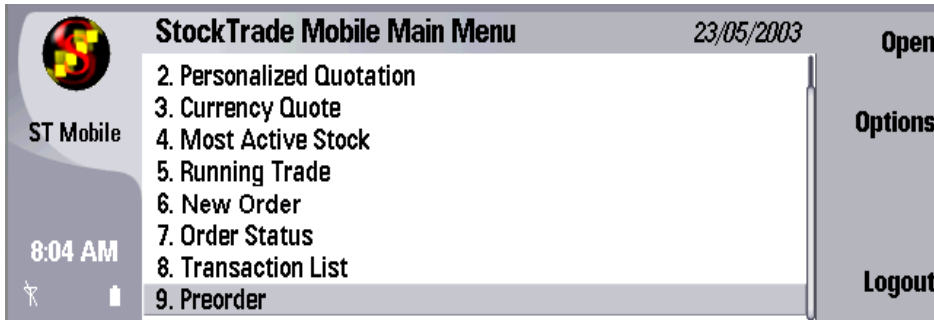


- You will be asked for a password file. Input the password file. If the file's password checking process is successful, the file will be deleted.

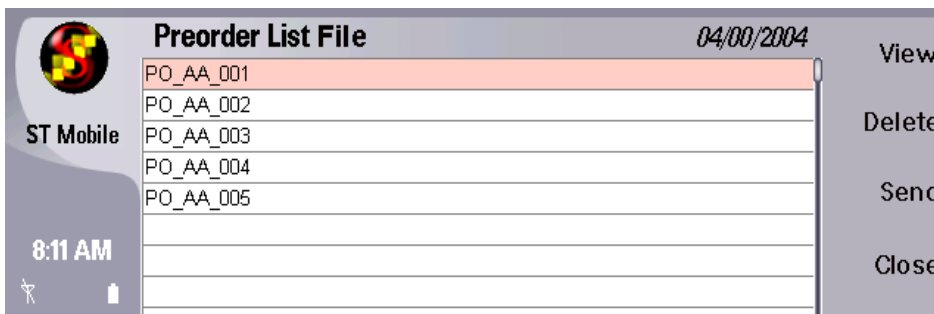
Preorder (online version)

This viewer allows you to send orders that you created before using the offline version of preorder viewer. You can also edit or delete orders in the preorder file here.

- Select Preorder from the StockTrade Mobile main menu such as the following:



- If you have not logged in to any brokers yet, the Broker List viewer will be displayed. Here you can login to your broker.
- If the login to the broker's system is successful and you have a pending preorder file to send to that broker, you will be notified. Select Ok to send the order.
- If you select not to send the order, the order will be displayed, such as the following:



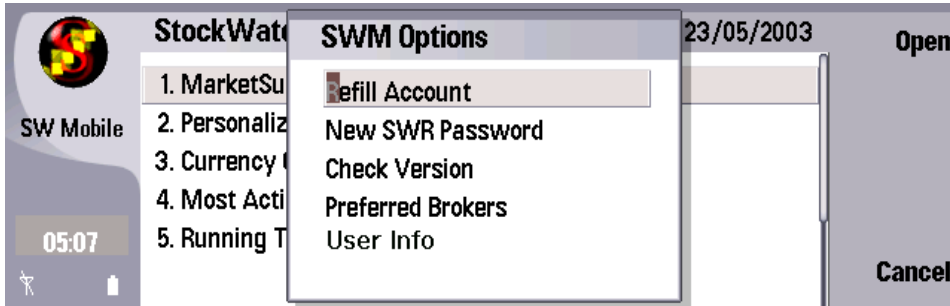
- To directly send the preorder file without viewing the file's order contents, select the file to send using the navigation button, select Send.
- To send other preorder files to another different broker, you need to repeat the login process using the Broker List viewer described before.
- To edit the preorder file, select the file to edit using the navigation button and select View.

Preferred Brokers

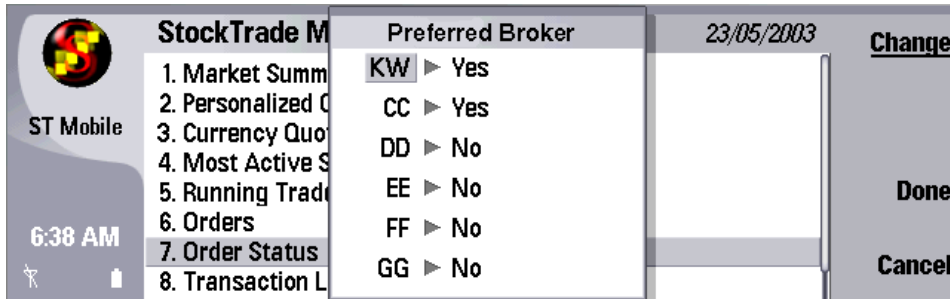
Preferred Brokers enables you to set StockTrade Mobile to have your preferred brokers displayed in the Orders viewer when you input your orders.

To set your preferred brokers:

- Select the Options softkey from StockWatch main menu, a pop up window will appear, then select Preferred Brokers.



- The following will appear:



- Select at least one broker code. **If there is no preferred broker selected, you cannot submit any order.**

Trading Parameters

Viewer Function

Trading Parameters viewer enables you to see your current trading limit. When you submit buy or sell orders to the regular, crossing or negotiated board, your trading limit parameters will be updated.

The cash position is your current available cash on your account. The trading limit is calculated from your latest cash position and the calculation parameter is determined by your broker firm. The stock owned is your current stock portfolio.