



# Parking sensor

## Installation & User's Manual



## TO USER

Dear User ,Thank you for choosing and using our Parking sensor .We are going to provide the best products and the best services to you .

To insure the best performance and avoid any false alarm or function failure, please kindly read this manual carefully and install it accordingly.

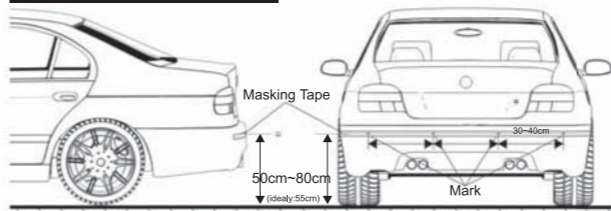
We reserve all rights for our parking sensor ,including the designs and the software.Any unauthorized copy or translation is prohibited.And the products' specification and information related in the Manual provide the references only, and the content of the Manual will be renewed according to the progress of the products without advance information, and the final explanation rights of the Manual is reserved by us .

Please note that this system is designed to be a driver's aid and should not replace the need to drive carefully, we accept no liability for damage or loss resulting from improper installation or use of this product, infringement of the vehicle manufacturer's warranty or injury or loss resulting from any accidents however caused. If in doubt please consult a qualified auto electrician.

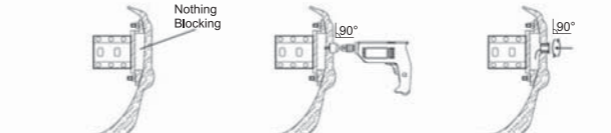
### TOOLS



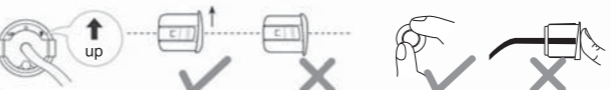
### Sensor Installation



First locate where you are going to install the sensors and place a piece of masking tape. Measure and mark the positions of the holes.

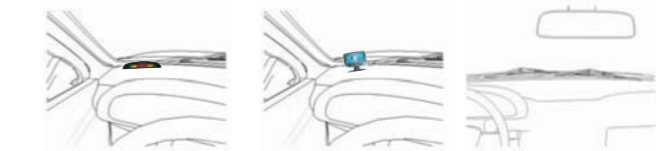


Make sure that there is nothing blocking the area behind the bumper, where the sensors go. Drilling position must be perpendicular to the surface of the bumper.



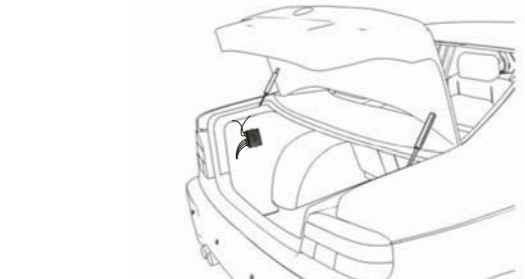
Install the sensors vertically;the "UP" sign must be on upside.

### Display Installation



Select an area to mount display firmly and easy for the driver to see. Clean surface with alcohol and use the double sided tape to mount.

### Control Box Installation



Remove the necessary back panels to mount the control box in a safe place, away from rain,heat or humidity.

### After installation Test

Use the following to test and verify the operation of the backup system:

Warning:Do not stand behind a moving vehicle death or injury could occur. Prior to testing,set the parking brake On,ignition key On(do not start),step foot on brake and shiftthe vehicle into reverse. Ensure that the engine is not running while proceeding with the following tests.

Test the system operation with a piece of wood(60\*30\*1cm) or other object (not too small) after the installation.Start with the wood more than 1m away from the vehicle. Then move the wood closer the vehicle and ensure that the buzzer,LED,and distance indicators display correctly.

### PARTS

1. Display
2. Contro lunit
3. Sensors
4. Power Cable
5. Drill bit
6. Manual

### Specifications

Rated voltage:DC12V  
 Operating range:DC9V-18V  
 Rated current:20mA-200mA  
 Display distance:0.3-1.8m  
 Ultrasonic frequency:40KHZ  
 Working temperature:-30°C to +80°C

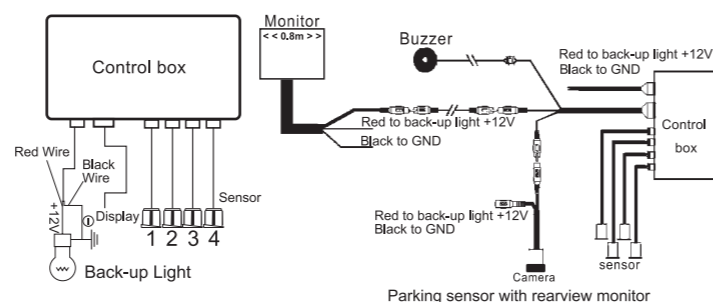
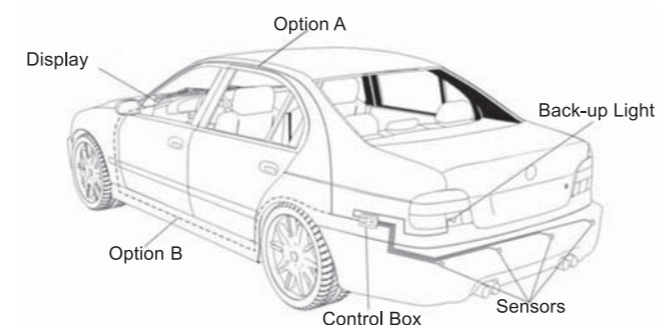
### Alarm MODE

Model	Awareness	Distance	Sound	Digital display	LED indicator
LED Items	Safe mode	130-180cm	Bi...Bi...	1.3-1.8	Green
	Alerm mode	60-130cm	Bi.Bi.	0.6-1.2	Yellow
	Dange mode	0-60cm	Biiii	0.0,0.3-0.5	Red
LCD buzzer alarm Items	Safe mode	130-180cm	Bi ...Bi...	1.3-1.8	---
	Safe mode	90-130cm	Bi..Bi..	90-95,1.0-1.3	---
	Alerm mode	60-90cm	Bi.Bi.	60-90	---
	Alerm mode	40-60cm	BiBi	40-60	---
LCD human Voice alarm Items	Safe mode	150-180cm	Bi..Bi..	1.5-1.8	---
	Alerm mode	40-150cm	Voice reminder	40-95,1.0-1.5	---
	Dange mode	0-40cm	stop	P	---

### Installation Instruction:

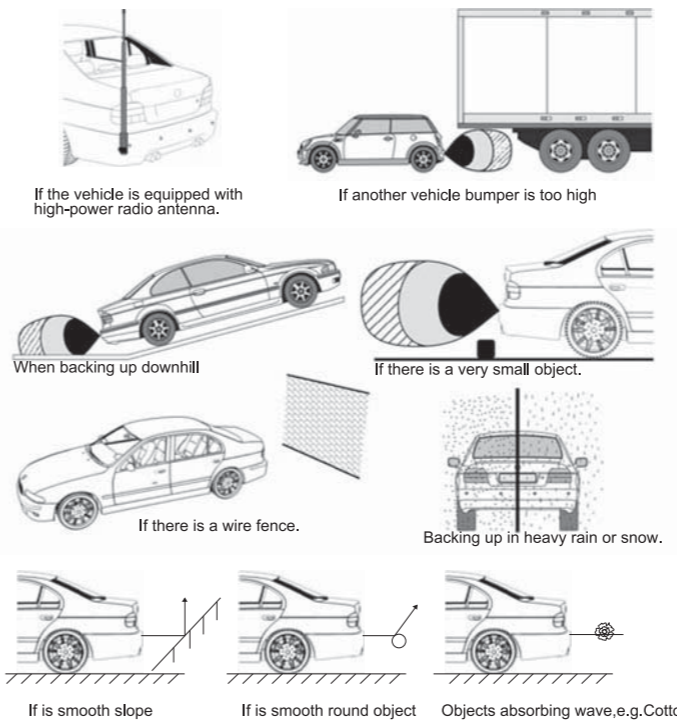
**Warning:** Before installing system let the components of the exhaust system cool down. This will make the installation safer and preclude heat damage to the backup sensor wiring or components.

The following illustration shows the general location of the components of the backup system.



### Limitations

The sensors may not work if an object does not reflect the ultrasonic waves or it has an unusual shape, pole cardboard carton,tire of bicycle,small or slender tree,rectangular lumber or curbs tone.The sensor may not detect another vehicle bumper if it is too high. Also note:This system has different detection distance to the different object. To the wall, the max detection sistance is 1.8m; tho the human body,the max detection distance is 1.0m; to the column is <math>\varnothing</math> 40cm,the max detection distance is 1.2m. In some special cases,the diaplay may not be the same as the real condition due to the sensor position,obstacle shape,reflection condition and so on. Some examples are given below



### Trouble shooting

- No buzzer or display at power up?
1. Is power wire connected to control unit correctly?
  2. Verify(+12V) at control unit when vehicle is in reverse.
  3. Verify the ground connection.
  4. Have you connected to the correct reversing indicator wire?
  5. Do you have a minimum of(+12V) and ground at the display?

- False warning tone or false LED flashing
1. Is the sensor mounted too low or pointing to the ground?

- Sensors do not detect any objects?
1. Is the vehicles exhaust smoking?Correct or allow it to clear before proceeding with testing.
  2. Are sensors properly plugged into the correct sockets?

### GUARANTEE FORM

Model Number		Stamp/signature of dealer:
Date of purchase		
Customer's name		
Telephone		
Car registration Number		

### Note

- 1.Guarntee time:12 months.
- 2.The guarantee will be effective with the stamp/signature of the dealer.
- 3.please keep the guarantee form well to ensure 12months guarantee.