

9.0. LEGEND OF PARAMETERS AND COMMANDS

PARAMETER	DESCRIPTION
ID	System identification number. Assigned by user. Numerical string 8 digits. Fty Setting: 99999999
USERID	Parameters of recognition for connection to the internet. Supplied by SIM card provider.
APN SMTP_Server	Parameter for configuration of SIM to allow e-mail transmission. Supplied by SIM card provider.
E-MAIL_SIM	E-mail address associated to SIM card Supplied by SIM card provider.
PSW	User password for access to system. Alphanumerical string from 0 to 8 characters. Fty setting: 1234
INT_PASSW	Recognition password for connection to the internet. Supplied by SIM card provider.

COMMAND	DESCRIPTION
IPASS	To change password for access to system (PSW)
IPARA	Memorization of the parameters of the SIM card
!MAIL	The memorization of e-mail addresses
!INTEL	The memorization of telephone numbers
!APSM	To start-up the AutoSat SIM card for e-mail messages
!RISF	To set resolution of cameras
!IDAS	To give the AutoSat an identification number (ID)
!POSI	To request last GPS position
!STAT	To request the status of the installation and additional information
!DELI	Request to cancel image memory
!DELG	To cancel the GPS data in memory and memorized new data
!MEMO	To check memorized telephone numbers and e-mail addresses
!RPAR	Control of the parameters memorized in the SIM card
!RAPS	To request the memorized APN and SMTP parameters of the AutoSat SIM card
!LGPS	Request e-mail showing the vehicle co-ordinates and the speed
!LASN	Request e-mail with last 3 photos memorized, the GPS position and the vehicle speed
!SNAP	Request e-mail in real time photos, GPS position and the vehicle speed

# AutoSat GPS - GPRS Video

## SATELLITE CAR ALARM AND

Index	Page
1.0. Description .....	2
2.0. Installation and power-up .....	3
3.0. Message programming.....	5
3.1. SMS message programming.....	5
To memorize the parameters of the SIM card .....	5
To memorize and cancel the e-mail addresses (maximum 3) .....	5
To memorize and cancel up to 3 telephone numbers.....	6
To enable the AutoSat for e-mail transmission .....	6
Regulating of the resolution installed cameras .....	7
To give the AutoSat an identification number (ID) .....	7
3.2. SMS remote command with only SMS reply .....	7
To change password .....	7
To request the last GPS position .....	8
To request the status of the installation .....	8
Request to cancel memorized images .....	8
To cancel the GPS data in memory and memorize new data .....	9
To check memorized telephone numbers and e-mail addresses .....	9
Control of the memorized parameters related to the SIM card .....	9
Control of the APN and SMTP memorized parameters related to the SIM card.....	9
3.3. Request by SMS with SMS and e-mail replay .....	10
Request for e-mail with pre-programmed file showing the vehicle	
co-ordinates and the speed .....	10
Request for e-mail with the last photos memorized (up to 3), the GPS	
position and the speed of the vehicle .....	11
Requesting e-mail with real time photos, GPS position and the	
speed of the vehicle .....	11
4.0. How AutoSat functions with an alarm trigger .....	12
5.0. Characteristics of the Master telephone number .....	13
6.0. SMS warning message in case of e-mail message failure .....	13
7.0. Cable assembly .....	14
8.0. Technical characteristics.....	15
9.0. Legend of parameters and commands .....	16

**Compliments for having chosen the AutoSat GPS-GPRS Video.  
This system allows you to monitor your automobile by using your portable telephone.**

AutoSat will transmit via GPRS images directly to your portable telephone when an alarm is triggered or upon request by the end user from the digital cameras installed in your automobile showing the position of your car on

## ***1.0. DESCRIPTION***

The AutoSat incorporates a dual band GPRS 900-1800 MHz module capable of transmitting and receiving SMS messages and e-mail. A 12 channel GPS module and interfaced for up to 3 digital color cameras with on-board JPEG compressor.

The AutoSat allows remote programming by means of SMS messages.

### **Remote monitoring allows you to request:**

- GPS vehicle position or co-ordinates
- Vehicle movement path for a maximum of 18,000 points
- All e-mail addresses and telephone numbers memorized in AutoSat SIM card
- Request the status of the system
- Real time images from the digital cameras installed
- The last 3 images stored in memory

### **From a remote telephone with SMS messages you may program:**

- The SIM card e-mail address, to which the AutoSat must send the images and alarm messages
- The e-mail addresses to which AutoSat will communicate
- The ring and SMS telephone numbers that the AutoSat must call in case of alarm trigger
- Digital camera resolution
- AutoSat identification number if managed by a monitoring station (indicated as ID)
- AutoSat system password (indicated as PSW)

### **In case of an alarm trigger, the AutoSat sends:**

- A ring + SMS message with the type of alarm and the position of the vehicle
- E-mail with images and the position of the vehicle in real time

Remote control of the AutoSat may be processed through the website **www.unisat.it** or through a monitoring station which will take action based on established agreement.

All programming functions and normal functioning of the AutoSat are made user friendly by means of 4 LEDs that signal all operations (see Fig. 1 and 2 on Page 3).

## ***8.0. TECHNICAL CHARACTERISTICS***

- Power supply: rechargeable battery Ni - MH 7.2 V - 1200 mAh
- Working temperature: from -10°C to +50°C
- SMD technology
- Dimensions: 138x82x38 mm
- Weight (with battery): 330 g

3i Security International is not responsible for improper use of its products.  
For any problems or information, contact your nearest distributor or 3i service centre.

## 7.0. CABLE ASSEMBLY

Included with the AutoSat kit is a 12 pole cable assembly for easy installation of the system. Below in Fig. 3 you will see this assembly along with the description of each cable + colour.

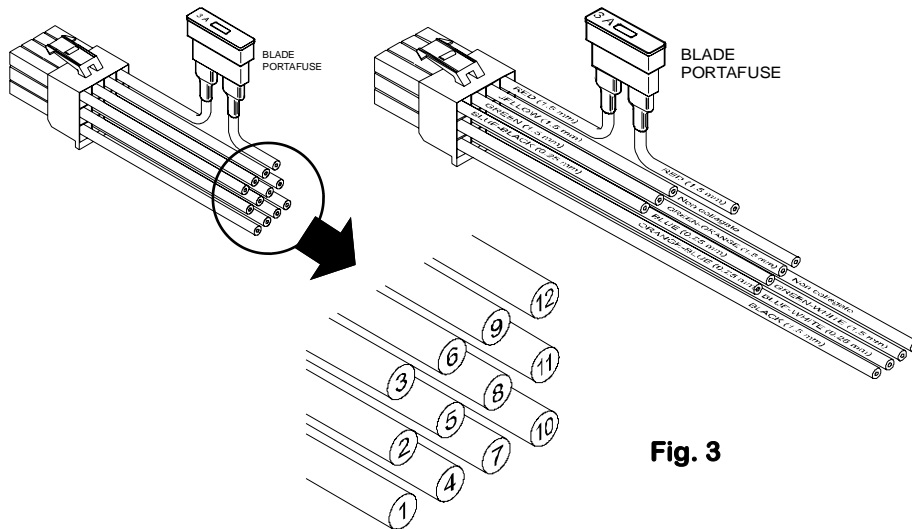
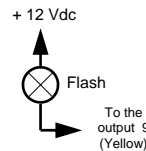


Fig. 3

### Cable legend

- 1 - Black → Negative (GND)
- 2 - Orange-Blue → STAND-BY. Normally open contact. Connection to ground puts the system in stand-by mode (see Page 4).
- 3 - Blue-Black → Input alarm 1. AutoSat will trigger an alarm if this input is connected to GND.
- 4 - Blue-Orange → Input alarm 2. AutoSat will trigger an alarm if this input is connected to GND.
- 5 - Blue → Input alarm 3. AutoSat will trigger an alarm if this input is connected to GND.
- 6 - Green → Common (C) alarm relay
- 7 - Green-White → Normally closed (NC) alarm relay
- 8 - Green-Orange → Normally open (NA) alarm relay
- 9 - Yellow → "Open Collector" output. This terminal can be used to connect a flash that will be activate when photos are taken - ( $I_{max} = 2 A$ ). For connection the flash see figure on the right.
- 10 - → Not present in this version
- 11 - → Not present in this version
- 12 - Red → Positive from +11 Vdc to 24 Vdc (with a 3 A fuse in series)



## 2.0. INSTALLATION AND POWER-UP

Before proceeding to install the AutoSat, it is necessary to purchase a SIM card capable of handling GPRS traffic.

**This card must not have a PIN code inserted. If it does, it must be cancelled.**

Follow the instructions below:

- Insert the SIM card into the slot shown in Fig. 2 below.
- Connect both the GPS & GPRS antennas to the connectors shown in Fig. 2.
- Plug-in the digital camera (maximum 3) in the slots shown in Fig. 1 (optional).
- Insert the cable assembly 12 poles in the connector as indicated in Fig. 1.
- Connect the listen-in kit (optional) to the connector indicated in Fig. 1.
- Rotate the key switch to "ON" position to power-up the unit.

### FRONT SIDE

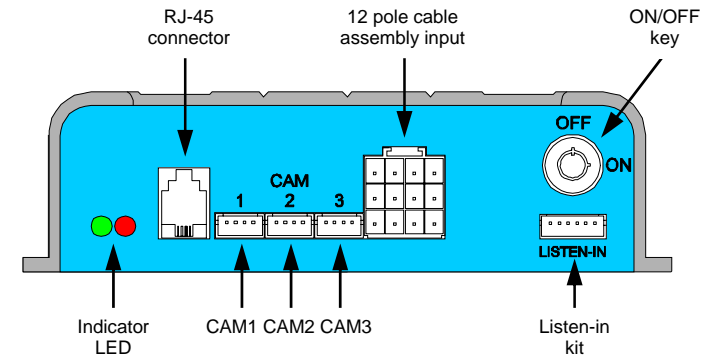


Fig. 1

### BACK SIDE

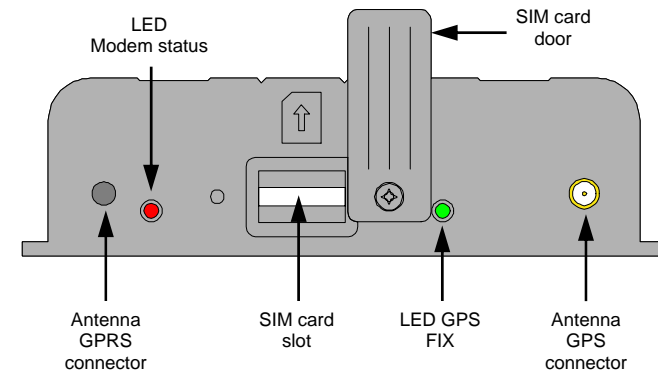


Fig. 2

After having turned the key switch to "ON" the AutoSat will automatically go into start-up mode and the following will take place:

- 1) The service relay will change state. The wire number 9 on Fig. 3 of Page 14 will go to ground for about 2 seconds.

### **Phase 1. Start-up of the digital camera installed**

- 2) During this phase, the red indicator LED on Fig. 1 of Page 3 will flash rapidly for 3 times. After which the green LED in Fig. 1 will flash based on how many cameras are installed. Example: If 2 cameras are installed, the red LED will flash 3 times, green twice.
- 3) After about 4 seconds, both the red and green LED light up together for about 5 seconds. This is an indication that the system is ready to be programmed through a P.C. (see section which explains P.C. programming). If P.C. programming does not start within 5 sec., the 2 LEDs will go OFF and the unit will be ready for the next phase.

### **Phase 2. GPRS modem start-up**

- 4) The modem registers the SIM card with the local GSM provider. This will be confirmed by 3 flashes of the green LED. If registration of the SIM card is not successful, the red LED will start flashing. The AutoSat will automatically repeat this procedure until GSM field is found and the SIM card is successfully registered with the local GSM provider.

### **Phase 3. Normal function mode**

The AutoSat is designed to function in two different modes:

**Active mode** The system controls the alarm inputs and in case of a trigger, an alarm procedure will take place as indicated in paragraph 4.0. on Page 12. In this mode the AutoSat will reply to a request from a remote source by means of SMS messages as shown on paragraph 3.0 of Page 5. In this phase, the green LED lit will indicate that the rechargeable battery is being charged and the red LED will flash every 14 seconds.

**Stand-by mode** In this mode the AutoSat does not control the alarm inputs. Every 30 seconds, however, it controls the arrival of SMS remote control commands. In this mode the AutoSat may easily control any request from remote source. The messages receive may be seen in paragraph 3.0 of Page 5. This does not include "!DELG" commands found in (paragraph 3.2.) and "!LGPS" found in (paragraph 3.3.). The command "!POSI" will allow you to see the last position of the GPS before entering stand-by mode. Both LEDs will be OFF.

**Going from active to stand-by mode** After the start-up procedure, the AutoSat will automatically present itself in the active mode. To go into the stand-by mode, it is necessary to put to ground the no. 2 wire (see Fig. 3 on Page 14); this means connecting wire 1 and wire 2 together. To confirm that this operation has taken place, the 2 signalling LEDs will flash together twice.

**Going from stand-by to active mode** To return to active mode you must disconnect from ground the no. 2 terminal (see Fig. 3 on Page 14); this means disconnect the wire no. 1 and no. 2. To confirm that this operation has taken place, the red LED will light for a prolonged period followed by one green LED flash.

## **5.0. CHARACTERISTICS OF THE MASTER TEL. NUMBER**

*(this is the first of the numbers memorized)*

The telephone number memorized in the first position has exclusive functions for remote control of the AutoSat. These functions are listed below:

- By sending a ring to the AutoSat (system in active mode), a reply will be received by the number calling, giving an SMS message, with information on the status of the installation.
- Only the Master number will receive all SMS messages containing commands which can not recognize.

Example: If the AutoSat receives a message from the number 33312345678 with a not valid command ( for example "**xxxxyyyzzz**"), the Master number will receive the following text:

**MessExt from 33312345678:xxxxyyyzzz**

- The Master number will receive power failure message. Example:  
**"Attention! Main power failure.";**
- The Master number receives camera failure. Example:  
**"Attention! Camera 1 failure.";**
- In the case of forced shut down of the system due to total lack of power (battery back-up and main power source), the Master number will receive SMS shown below:  
**"Attention! Low battery! System will be shut down.";**

## **6.0. SMS WARNING MESSAGE IN CASE OF E-MAIL MESSAGE FAILURE**

The transmission of an e-mail may not be successful due to configuration error or because of weak GPRS signal. Below, you will see the SMS messages that the AutoSat will send to the requesting telephone number (in case of a remote request) or to all numbers memorized (in case of an alarm trigger), if for some reason it is unable to transmit the e-mail.

- **"e-mail failure: weak GPRS signal."**  
This SMS message will be sent only after attempting for 60 seconds to send an e-mail and the GPRS signal is too weak.
- **"e-mail failure:error with server;check SIM card parameters and e-mail addresses."**  
This message will be sent if the SMTP server does not accept one of the memorized e-mail addresses. You must check the "!IRPAR" or "!MEMO" command and make the necessary corrections to ("!PARA" or "!MAIL").
- **"e-mail failure: connection interruption during transmission."**  
This situation may take place if during transmission there is a weak signal or some GPRS server problem.
- **"e-mail failure:connection not recognized; check SIM card parameters."**  
If this takes place, the AutoSat is unable to get access from the server to internet. This may be caused by an error made during the setting of "!PARA" and/or "!APSM" command. Check and make the necessary corrections.

#### 4.0. HOW AutoSat FUNCTIONS WITH AN ALARM TRIGGER

If the system detects an alarm trigger, it will execute the following procedure:

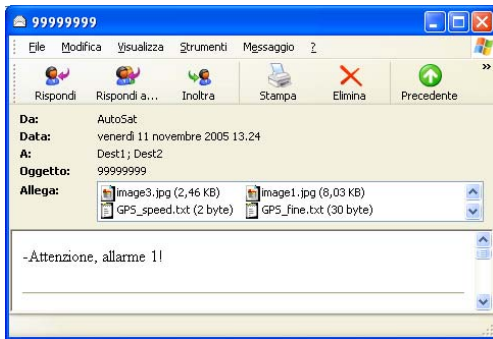
- 1) Acquisition and memorization of an image for each camera installed.
- 2) Telephone call to the memorized telephone numbers that have been enabled to receive ring only in case of alarm trigger. If one of the numbers does not reply to the ring, the system will attempt another 2 calls after it has terminated sending the SMS messages and e-mail.
- 3) Transmission of SMS to the memorized telephone numbers that have been enabled to receive ring in case of alarm trigger. The alarm message format is as follows:

**99999999-Attention, alarm X! Info GPS: speed 2 km/h;  
latitude 41,7112 north; longitude 12,6284 east.**

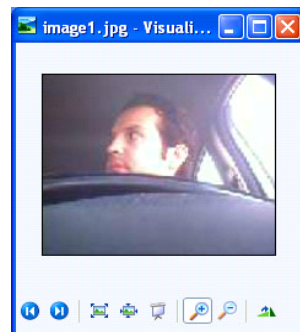
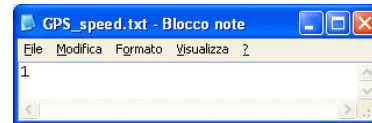
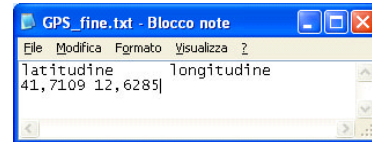
The number 99999999 is the factory programmed "ID" of the AutoSat and X=1,2,3, is the number of the input terminal that has triggered the alarm.

- 4) Transmission of alarm e-mail, with real time images and the GPS acquisition with position and speed. On the text of the e-mail is indicated the number of the alarm trigger.

**NOTE** If it is impossible to send the e-mail, an SMS message will be sent to the memorized telephone numbers with the reason of the e-mail failure (see paragraph 6.0. on Page 13).



**Alarm e-mail format**



#### 3.0. MESSAGE PROGRAMMING

The AutoSat may receive SMS command messages from any telephone number, but to access, you need a password (indicated as PSW). The unit is factory supplied with password **1234**. It is possible to change this password of the AutoSat by sending an SMS (see paragraph 3.2. at Page 7).

##### 3.1. SMS message programming

###### ■ To memorize the parameters of the SIM card (command "!PARA")

To transmit and receive e-mails, it is necessary to open an e-mail account for the SIM card inserted in the AutoSat. To do this, you must contact the SIM card GSM company and request an e-mail account to be assigned to the SIM card. After the e-mail account has been assigned, you must send an SMS message to the AutoSat with the following information:

- E-mail address assigned to the SIM card (E-MAIL\_SIM)
- End user identification number for the internet connection (USERID)
- Recognition password for connection to internet (INT\_PSSW)

The SMS message will be as shown below:

**!PARA#PSW#E-MAIL\_SIM#USERID#INT\_PASSW#**

**Example:** If the system password is 1234 and you obtained from the tel. Co. the USERID "brown" and the password "test", and the e-mail address is "brown@xyz.com", then the SMS message that must be sent is:

**!PARA#1234#brown@xyz.com#brown#test#**

The AutoSat will send an SMS confirmation reply message to the telephone number that has made the request.

AutoSat replies: **PARA: brown@xyz.com, brown, test**

###### ■ To memorize and cancel the e-mail addresses (maximum 3) (command "!MAIL")

To memorize in the AutoSat the e-mail address (maximum 29 characters) to which you wish to send e-mails with photo images, it is necessary to send an SMS message to the AutoSat as shown below:

**!MAIL#PSW#option#address1#address2#address3#**

where: option = 'A' is to receive the e-mail automatically in case of alarm or by request  
option = 'B' to receive the e-mail **only** when requested

**Example: !MAIL#1234#A#first@3isecurity.it#second@3isecurity.it#third@3isecurity.it**  
AutoSat replies: **MAIL: first@3isecurity.it#second@3isecurity.it#third@3isecurity.it**

To cancel the e-mail addresses memorized, send the following message:

**!MAIL#PSW#C**

**Example: !MAIL#1234#C**

■ **To memorize and cancel up to 3 telephone numbers (command "!INTEL")**

To memorize in the AutoSat the telephone numbers to which the SMS and ring will be sent during alarm trigger, it is necessary to send an SMS command message to the AutoSat using the following format:

**!INTEL#PSW#tel1,option#tel2,option#tel3,option#**

- option = 'B' → Ring + SMS with alarm trigger
- option = 'R' → Ring only with alarm trigger
- option = 'S' → SMS only with alarm trigger

Example: **!INTEL#1234#33312345678,B#32812345678,R#**  
 AutoSat replies: **NTEL: 33312345678,B;32812345678,R**

To cancel numbers that have been memorized, send the following SMS message to the AutoSat:

**!INTEL#PSW#C**

Example: **!INTEL#1234#C**  
 AutoSat replies: **NTEL:**

**NOTE** The first number memorized is the Master telephone number (see paragraph 5.0 on Page 13).

■ **To enable the AutoSat for e-mail transmission (command "!APSM")**

In order to enable the AutoSat for the e-mail transmission, you must send the following SMS message to the AutoSat:

**!APSM#PSW#APN#SMTP\_Server #**

where: APN = Access Point Network  
 SMTP\_Server = Simple Mail Transfer Protocol

These 2 parameters are supplied by the local telephone company or GSM server.

Example: If the APN is "abc.fgh" and the SMTP\_Server is "xyz.opq", then you must send the following SMS to AutoSat:

**!APSM#1234#abc.fgh#xyz.opq#**

AutoSat replies: **APSM: abc.fgh,xyz.opq**

■ **Request for e-mail with the last photos memorized (up to 3), the GPS position and the speed of the vehicle (command "!LASN")**

It is possible at any moment to request the position, speed of the vehicle and the last 3 images memorized, by the cameras installed, by sending a command SMS message to the AutoSat as shown below.

**!LASN#PSW#n**

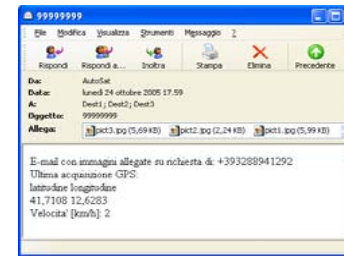
n = 1, 2 or 3 indicates the memorized image number

Example: **!LASN#1234#3**

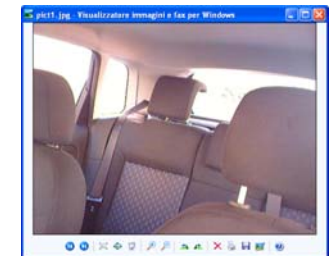
AutoSat replies: **Request LASN accepted.**

**Info GPS: speed 2 km/h; latitude 41,7112 north; longitude 12,6284 east.**

**NOTE** The image will be sent by e-mail. If it is impossible to send e-mail, an SMS message will be sent to the requesting number with the reason of e-mail failure (see paragraph 6.0. on Page 13).



Replay e-mail format



■ **Requesting e-mail with real time photos, GPS position and the speed of the vehicle (command "!SNAP")**

It is possible to request at anytime the real time photos from the cameras installed, the position and the speed of the vehicle (if in movement).

For this information send an SMS command message to the AutoSat with the format shown below:

**!SNAP#PSW#n**

"n" is a number that will vary as shown on the below table.

Example: **!SNAP#1234#3** This is a request for images from the cameras 1 and 2.

AutoSat replies: **Request SNAP accepted.**

**Info GPS: speed 18 km/h; latitude 41,7107 north; longitude 12,6286 east.**

**NOTE** If it is impossible to send e-mail, an SMS message will be sent to the requesting number with the reason of e-mail failure (see paragraph 6.0. on Page 13).

n	Camera 1	Camera 2	Camera 3
1	•		
2		•	
3	•	•	
4			•
5	•		•
6		•	•
7	•	•	•

3.3. Request by SMS with SMS and e-mail replay

■ **Request for e-mail with pre-programmed file showing the vehicle co-ordinates and the speed (command "!LGPS")**

The AutoSat after having received the command DELG#PSW#S, will start memorizing the position and speed of the vehicle.

The gathering of information is done by memorizing the vehicle position every 10 seconds or if the change in distance, from point to point, is more than 100 meter from the previous acquisition.

The AutoSat can memorize up to 18,000 points which corresponds to 1,800 Km.

The coordinates and speed are contained in 2 files (GPS\_coarse.txt. GPS\_speed.txt) enclosed in an e-mail that may be requested by sending an SMS command message to the AutoSat using the following format:

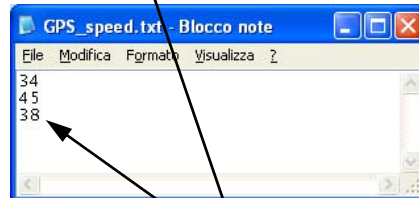
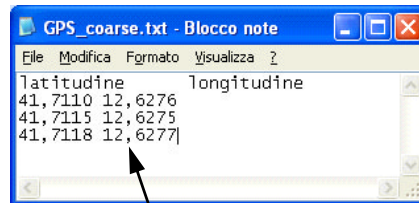
**!LGPS#PSW#**

Example: **!LGPS#1234#**

AutoSat replies: **Request LGPS accepted.**

**Info GPS: speed 26 km/h; latitude 41,7112 north; longitude 12,6284 east.**

**NOTE** If it is not possible to send an e-mail, the requesting telephone number will receive an SMS message which indicates the reason of the e-mail failure (see paragraph 6.0. on Page 13).



Replay e-mail format

Last acquisition

■ **Regulating of the resolution installed cameras (command "!RISF")**

It is possible to set by remote the resolution of the cameras installed with the AutoSat by sending an SMS message to the AutoSat using the format shown below:

**!RISF#PSW#r<sub>1</sub>r<sub>2</sub>r<sub>3</sub>#**

where: r<sub>1</sub> = 1 for 80x64 pixels                      r<sub>1</sub> = 3 for 160x128 pixels  
           r<sub>1</sub> = 5 for 320x240 pixels                    r<sub>1</sub> = 7 for 640x480 pixels

Example: **!RISF#1234#537#**

AutoSat replies: **Ris Cam 1: 320x240. Ris Cam 2: 160x128. Ris Cam 3: 640x480.**

**NOTE** The factory set resolution is 160x128.

■ **To give the AutoSat an identification number (ID) (command "!IDAS")**

To use the AutoSat with a monitoring station, you must give each unit an 8 digit identification number called ID. Each unit installed must have its own ID number.

**NOTE** The ID must be made-up of **8 numbers**.

The factory supplied ID is **99999999**.

To create this ID, you must send an SMS message to the SIM card of the AutoSat using the format below:

**!IDAS#PSW#ID#**

For an ID of 8 numbers, the SMS you must send is:

Example: **!IDAS#1234#12345678#**

AutoSat replies: **New ID:12345678**

3.2. SMS remote command with only SMS replay

■ **To change Password (command "!PASS")**

**NOTE** The password may be **alphanumerical** and have **8 characters**.

AutoSat is factory supplied with PSW **1234**.

It is possible to change the access password of the AutoSat by sending an SMS command message with the following format:

**!PASS#PSW#new\_password#**

Example: **!PASS#1234#abcd1278#**

AutoSat replies: **New password: abcd1278**

### ■ To request the last GPS position (command "!POSI")

To request the last position of the vehicle, send an SMS command message to the AutoSat SIM card using the format shown below:

**!POSI#PSW#**

The AutoSat will reply: **Info GPS: speed' 18 km/h;latitude 41,7109 north; longitude 12,6284 east.**

**NOTE** The data is in decimal therefore map software must be compatible.

### ■ To request the status of the installation (command "!STAT")

It is possible to monitor the AutoSat installation by means of SMS request command messages. Example: by sending SMS message to the AutoSat SIM as shown below:

**!STAT#PSW#**

Example: **!STAT#1234#**

AutoSat replies: **Mode: Active. Received field: G\*\*. Cameras: 2. Photos in memory: 0.Photo memory: 0%. FIX GPS: ON. MemLGPS: ON Battery back-up: recharging (65%).**

Meaning of the information received:

- **Mode:** Active or stand-by.
- **Received field:** G\*\*. The "G" indicates presence of GPRS network, while the power level of field is represented by the number of asterisks (\*), from 1 to 4.
- **Cameras:** Indicates the number of cameras installed, from 0 to 3.
- **Photos in memory:** Indicate the number of images in memory.
- **Photo memory:** Indicates the percentage (%) of memory occupied (max 512 KB).
- **FIX GPS:** Indicates if the GPS receiver is obtaining satellite information (ON - OFF).
- **MemLGPS:** If "ON" indicates that the tracking memory is in function, if "OFF", the tracking memory is not in function.
- **Battery back-up:** Indicates the condition of the back-up battery with percent charging level(%). Possible states:
  - Charging
  - Stand-by or fully charged
  - Operative (this state only if there is no power to the AutoSat)

### ■ Request to cancel memorized images (command "!DELI")

It is possible to cancel the AutoSat image memory by sending an SMS message to the SIM card inserted in the unit with the following format:

**!DELI#PSW#**

Example: **!DELI#1234#**

AutoSat replies: **Image memory cancelled.**

**NOTE** After having sent this command, the images in memory will be deleted and the AutoSat is ready to store new images.

### ■ To cancel the GPS data in memory and memorize new data (command "!DELG")

To cancel the GPS data memorized, send an SMS command to the AutoSat using the following format:

**!DELG#PSW#option**

- If option = 'S', the GPS memory will be cancelled and new data will be stored (see command "!LGPS" in paragraph 3.3 on Page 10).
- If option is omitted, new GPS data will not be memorized.

Example: **!DELG#1234#S**

AutoSat replies: **GPS memory cancelled. Memory LGPS started.**

**NOTE** The AutoSat will memorize the GPS co-ordinates only after the above command is sent with the "S" option.  
The unit must be in active mode in order to accept this command.

### ■ To check memorized telephone numbers and e-mail addresses (command "!MEMO")

To check the e-mail addresses and telephone numbers memorized in the AutoSat, send an SMS command message to the SIM card inserted in the unit using the following format:

**!MEMO#PSW#**

AutoSat replies: **MEMO: A#first@3isecurity.it;second@3isecurity.it; third@3isecurity.it /3288941292,B;3294708725,R**

In this case, as specified in paragraph 3.1, the option = 'A' indicates that the e-mails are sent automatically in case of alarm trigger.  
For the two memorized telephone numbers, option 'B' indicates that the 1<sup>st</sup> number, in case of alarm trigger, there will be a ring and alarm SMS.  
To the second number (option 'R') the transmission of alarm will be sent with only a ring of the telephone, no SMS message will follow.

### ■ Control of the memorized parameters related to the SIM card (command "!RPAR")

To request the memorized parameters of the AutoSat SIM card, send an SMS message to the SIM card of the AutoSat with the format shown below:

**!RPAR#PSW#**

Example: **!RPAR#1234#**

AutoSat replies: **RPAR: brown@xyz.com, brown, test**

### ■ Control of the APN and SMTP memorized parameters related to the SIM card (command "!RAPS")

To request the memorized APN and SMTP parameters of the AutoSat SIM card, send an SMS message to the SIM card of the AutoSat with the format shown below:

**!RAPS#PSW#**