

liteCam Pro User Guide

liteCam Pro User Guide

Last Updated: September 2015

Copyright

liteCam Pro

Guide Version 1.0

© 2015 RSUPPORT Co., Ltd. All Rights Reserved

The information contained in this manual and future improvements are subject to change without notice.

Rsupport Co., Ltd. hereafter referred to as "Rsupport", does not take any responsibility for any marketability nor compatibility apart from the usage described in the manual.

Under no circumstances will Rsupport be liable to direct, indirect, incidental nor accidental damages due to errors in the manual.

This manual is the intellectual property of Rsupport and is protected under international copyright laws. Reproducing or copying all or part of this document without the prior written consent of Rsupport is a violation of international copyright law.

Windows XP / Vista / 7 / 8 / 10 are registered trademarks of Microsoft Corporation in the U.S. and other countries. Any additional third party registered trademarks mentioned in this manual are used for reference and descriptive purposes only and are still the intellectual property of the third party in question.

Table of Contents

SYSTEM REQUIREMENTS	5
1. LITECAM PRO INSTALLATION GUIDE	6
A. INSTALLATION	6
B. ACTIVATION	8
C. ENCODER	12
D. LAME INSTALLATION	16
2. SETTINGS PRIOR TO RECORDING	17
A. AUDIO DEVICE.....	17
B. VIDEO OPTIONS.....	18
C. VIDEO FILE OPTIONS	20
D. AUDIO FILE FORMAT.....	21
E. SHORTCUT KEYS	22
3. RECORDING MODE.....	24
A. ONE-CLICK RECORDING	24
B. GENERAL RECORDING.....	24
<i>i. Select Recording Area.....</i>	<i>25</i>
<i>ii. Select Frames per Second (FPS).....</i>	<i>25</i>
<i>iii. Select Audio Device.....</i>	<i>25</i>
<i>iv. Audio Format.....</i>	<i>25</i>
<i>v. Click Record Button</i>	<i>25</i>
<i>vi. Finish Recording.....</i>	<i>25</i>
C. VIDEO RECORDING	25
<i>i. Select Recording Area.....</i>	<i>25</i>
<i>ii. Select Frames per Second (FPS).....</i>	<i>26</i>
<i>iii. Select Audio Device.....</i>	<i>26</i>
<i>iv. Audio Format.....</i>	<i>26</i>
<i>v. Click Record Button</i>	<i>26</i>
<i>vi. Finish Recording.....</i>	<i>26</i>

D.	AUDIO RECORDING.....	26
i.	<i>Select Audio Device</i>	26
ii.	<i>Audio Format</i>	26
iii.	<i>Audio File Format</i>	26
iv.	<i>Click Record Button</i>	27
v.	<i>Finish Recording</i>	27
E.	ANDROID RECORDING.....	27
i.	<i>Activate USB Debugging Mode</i>	27
ii.	<i>Download and Install USB Drivers</i>	29
F.	TIMER RECORDING.....	29
G.	STOP/PAUSE RECORDING.....	32
4.	PREVIEW	33
5.	GENERAL OPTIONS	39
A.	FRAMES PER SECOND.....	39
B.	AUDIO FORMAT.....	40
C.	SELECT AN AREA.....	41
6.	ADVANCE RECORDING OPTIONS	42
A.	TITLE.....	42
B.	CREDITS.....	43
C.	LOGO.....	44
D.	MOUSE EFFECTS.....	45
E.	PIP.....	47
7.	CONVERTING AND EXTRACTING	50
A.	CONVERT VIDEO FILES.....	50
B.	CONVERT AUDIO FILES.....	51
C.	EXTRACT AUDIO FILES.....	52
8.	OTHER	53
A.	WORK AND LOG FOLDER.....	53
B.	OPTIONS OF RECORDING WINDOW.....	53

9. HELP55

System Requirements

	Minimum	Recommended
OS	Windows XP, Android 4.1	Windows Vista, 7, 8, 10 Microsoft Internet Explorer 8.0 Microsoft Windows Media Player 11 or later. Android 4.1 or higher
CPU	1.5GHz single-core	2GHz dual-core
Sound Card	Sound card that supports full-duplexing.	128MB video memory or more. Graphic card supporting DirectX 9 and WDDM driver. 512MB or more for video memory.
RAM	1GB RAM	1GB RAM or more

1. liteCam Pro Installation Guide

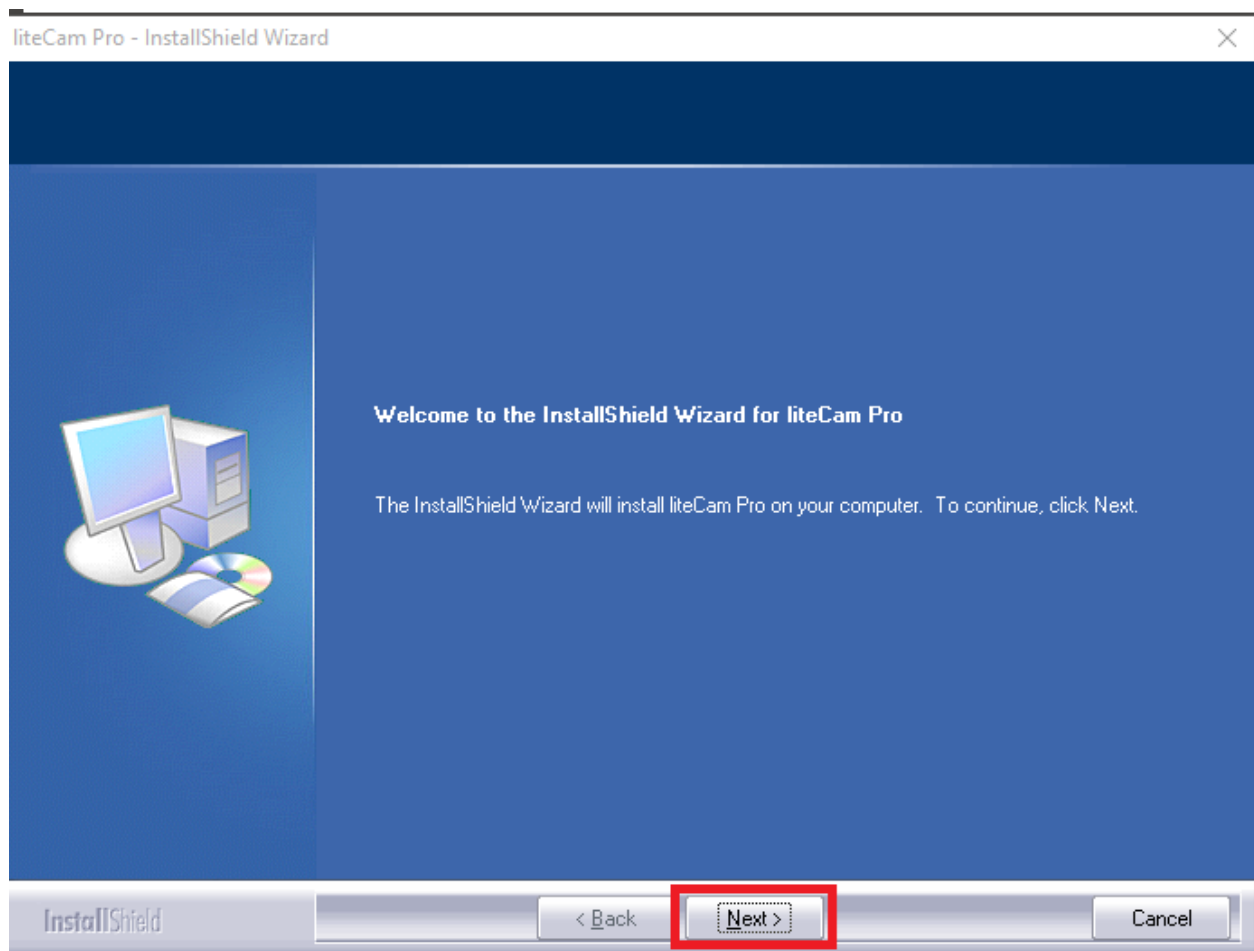
A. Installation

In order to get started, you need to download the liteCam Pro installation file. To download, simply click the download link included in the email sent to you after you have purchased liteCam Pro.

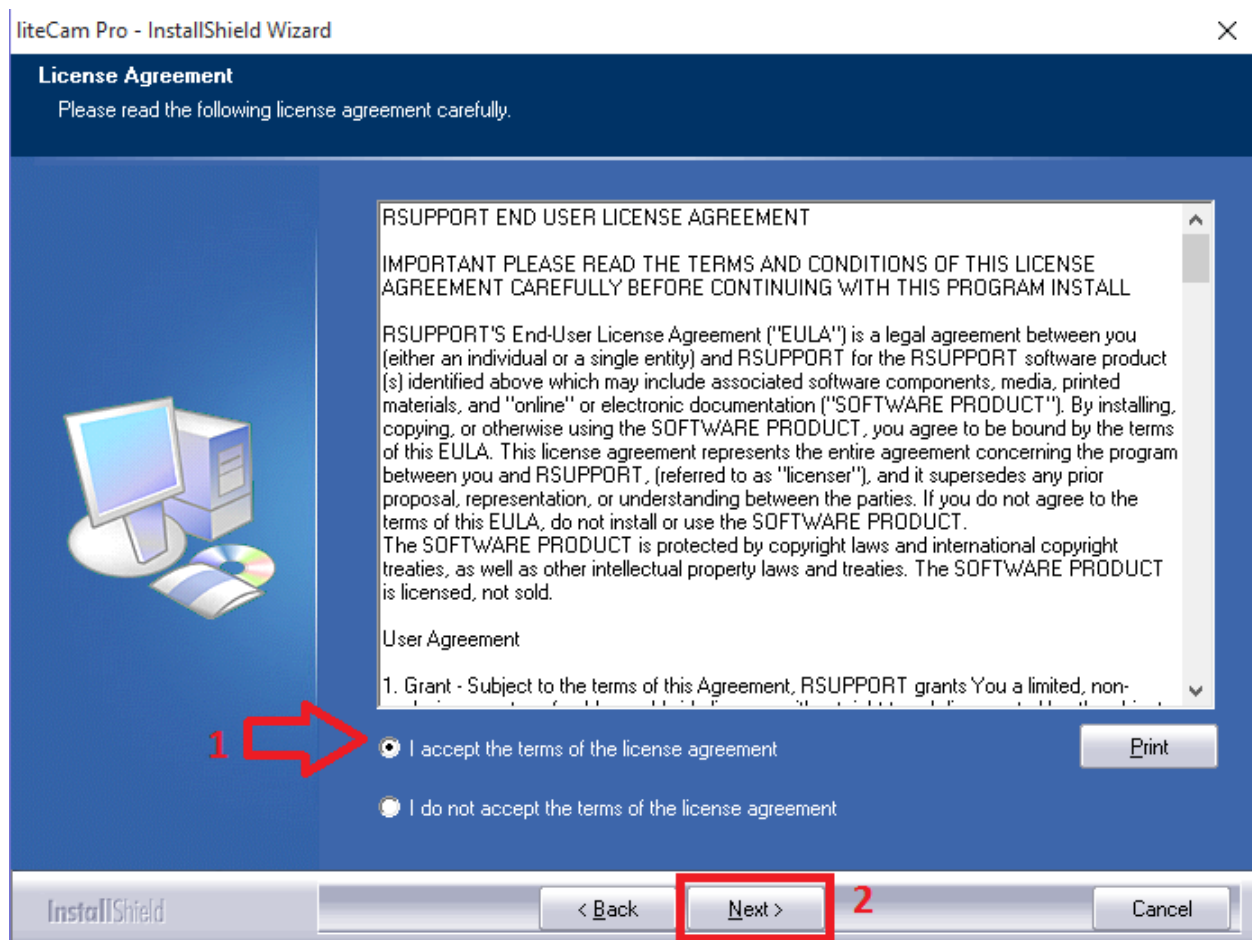
Install liteCam Pro with Administration by running it as administrator.

Step 1: If you RUN the installation file, you will be prompted with the liteCam Pro Installation Wizard as shown below.

Click "Next" button.



Step 2: You must select "I Accept the Term of the License Agreement" to continue. Click the "Next" button.



B. Activation

Step 3: You will need to enter a "User Name", an "Email Address" and a "License Code" (16-digit code received in your confirmation email). The information entered will be sent for program authorization after installation, so you must provide the correct information. Click the "Next" button.

NOTE: Internet connection is required for liteCam Pro authentication. Please make sure that you have access to <http://www.litecam.com/en/>

liteCam Pro - InstallShield Wizard

Customer Information
 Please enter your information.

Please enter user name, e-mail address and license code. The user name and e-mail address are used for program authorization. Incorrect information will cause authorization to be denied and you cannot access the program.

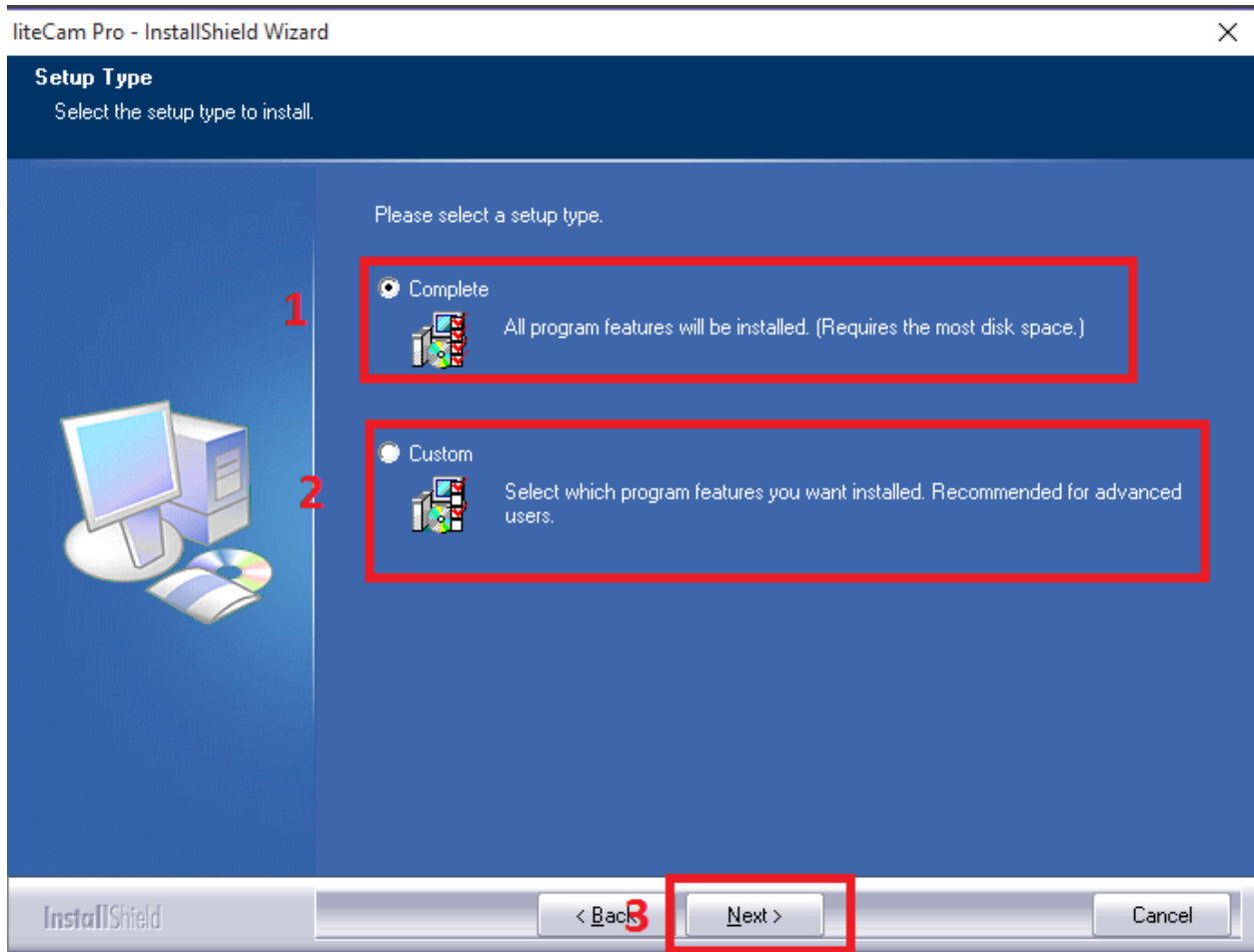
1 User Name:
 Windows User

2 e-mail:
 litecam@rsupport.com

3 License Code:
 [Redacted]

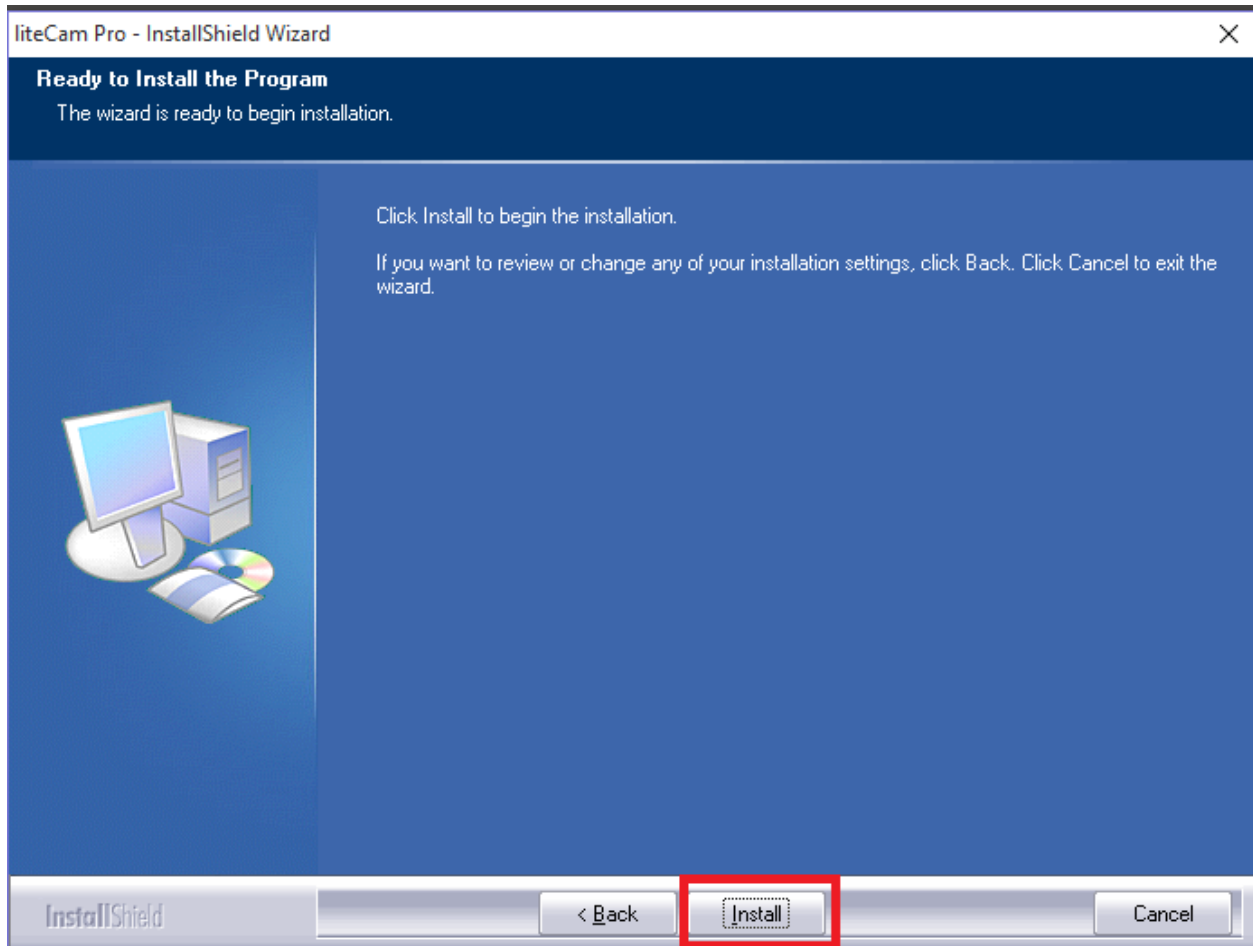
InstallShield < Back 4 Next > Cancel

Step 4: Select the setup type you wish to install. You can select between “Complete” or “Custom” setup types. Then, click “Next”.

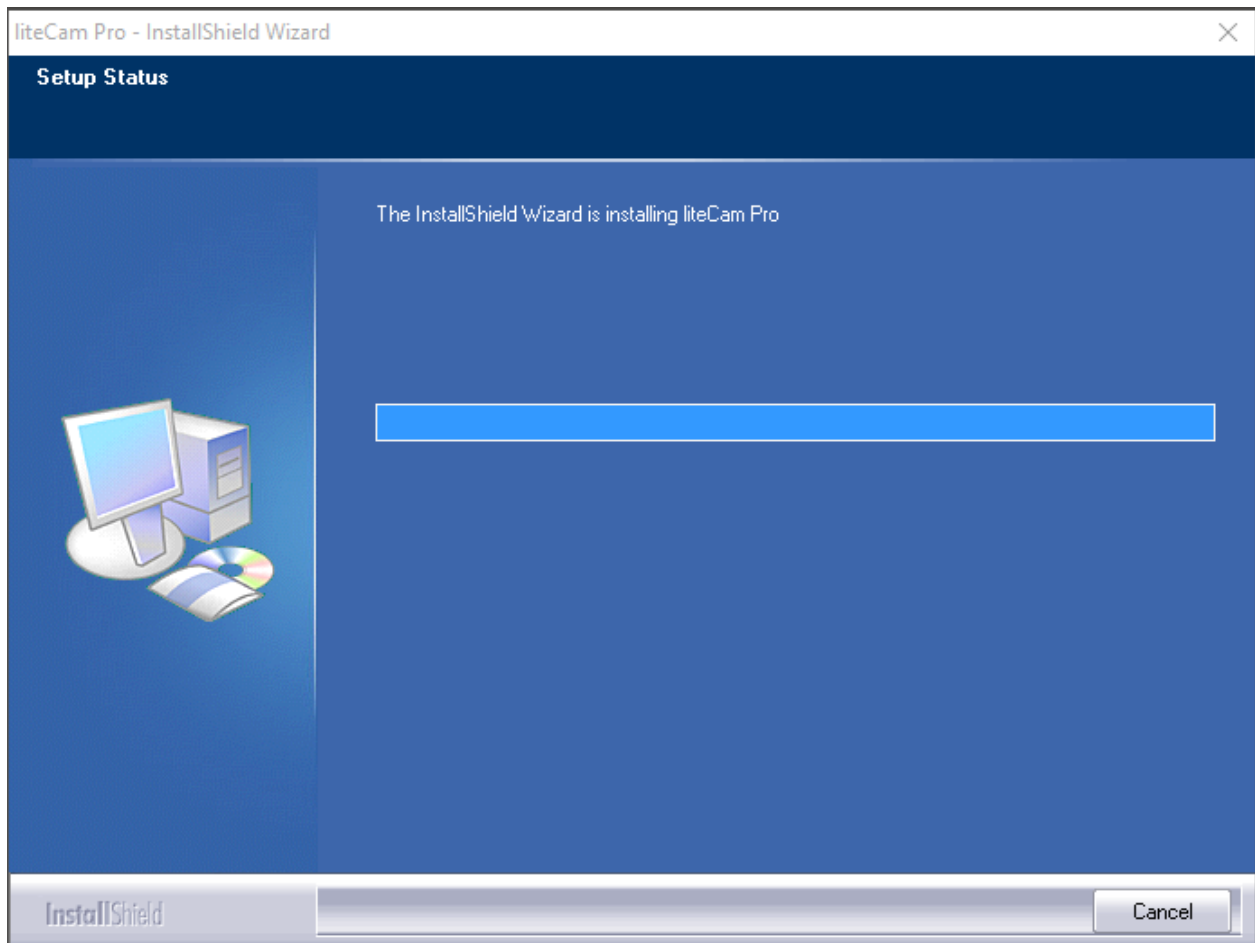


Step 5: Click Install to begin liteCam Pro installation.

Note: in case you want to change or review your installation settings, click "Back."

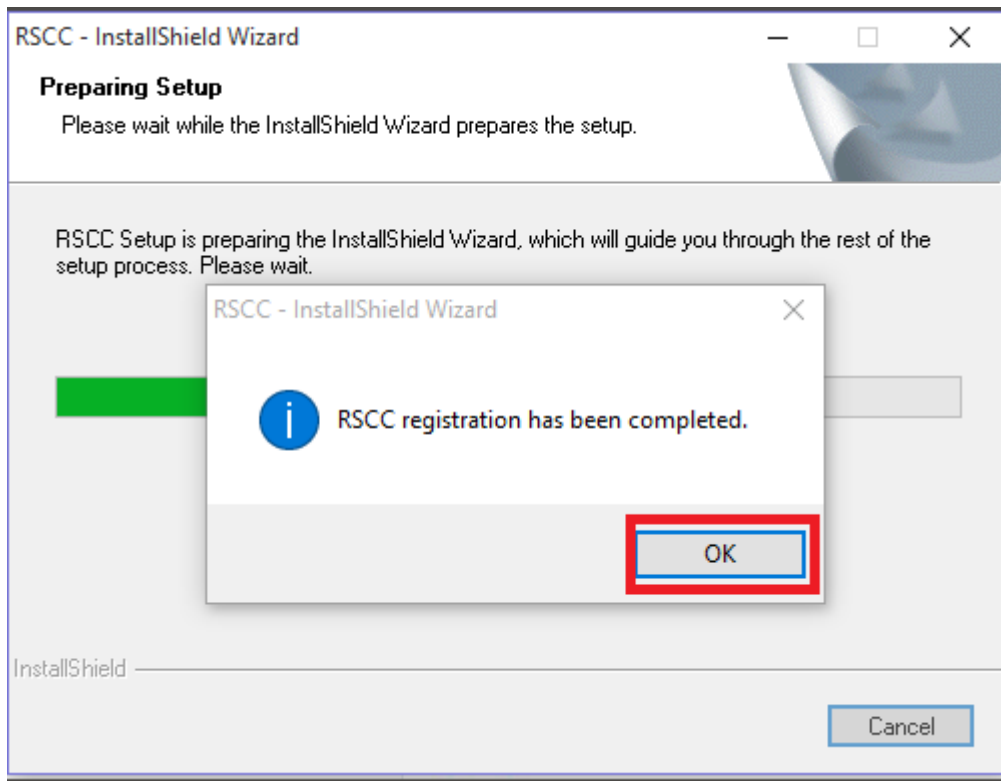


Step 6: The installation is will continue. Click "Cancel" to terminate the installation, if needed.



C. Encoder

Step 7: RSCC (RSUPPORT Screen Capture Codec) installation. When the installation is complete, a window will pop-up confirming that RSCC installation and registration has been completed. Click "OK" to close the window.



Step 8: Authorization page. Click "OK" to close the page.

Start program authorization



System information including CPU, BIOS, Motherboard name, OS, graphics card and IP address, and user information including license code, user name and e-mail address you entered in the first page of the installation screen are transmitted to initiate the program authentication process. No personal information will be transmitted or saved. Excess use of the license and unauthorized reproduction are detected through the authorization process.

The installation process cannot be completed if the system is not connected to the Internet or the authorization program is blocked by a firewall. Some firewall software or Windows firewalls may block the authorization program, please disable the firewall temporarily to continue installation.

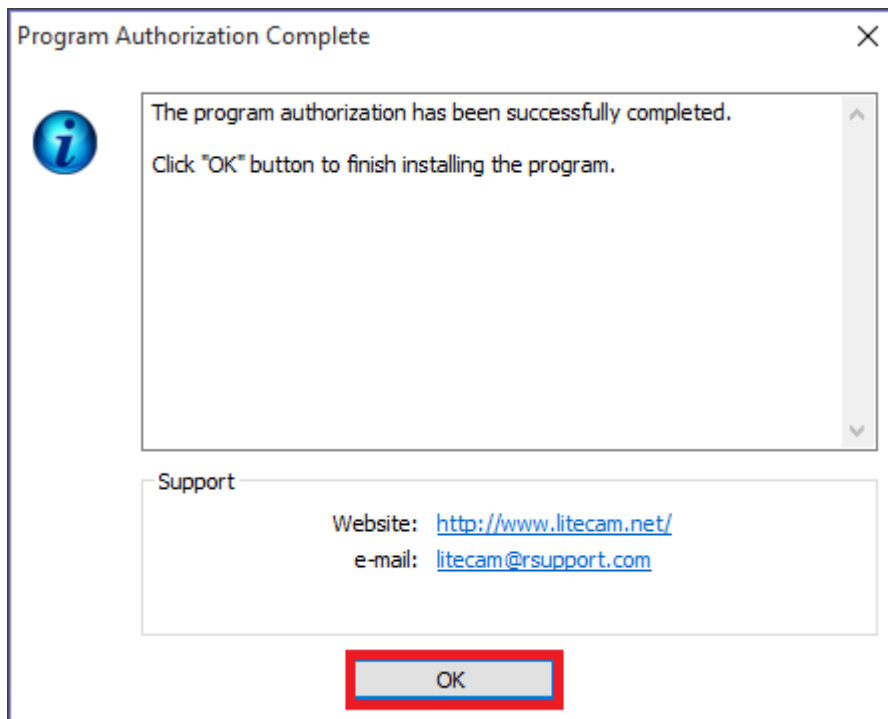
Support

Website: <http://www.litecam.net/>

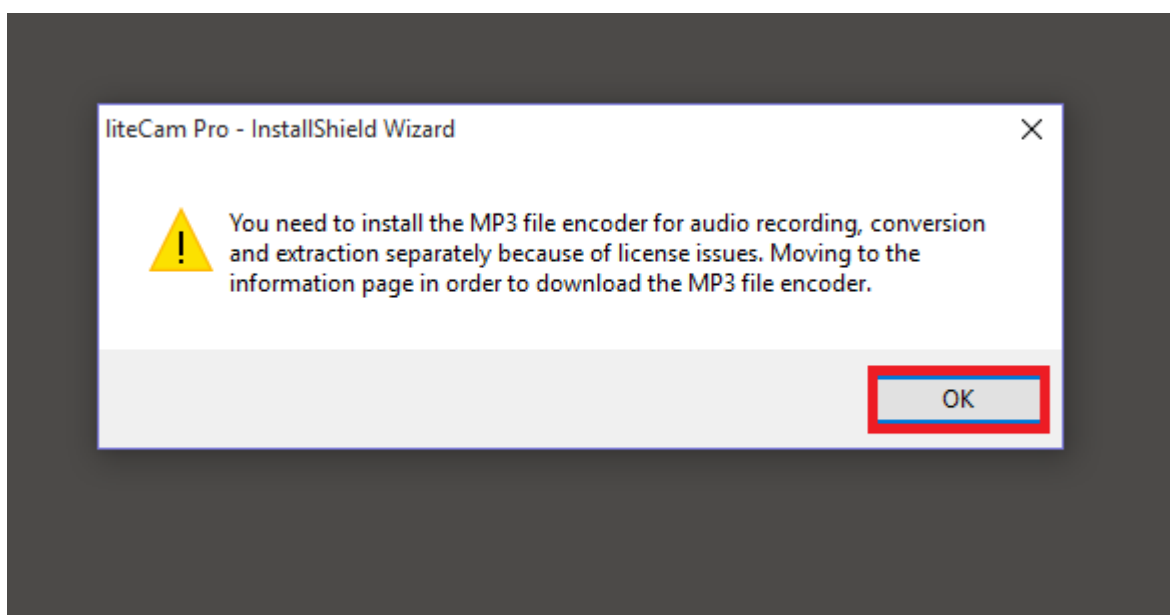
e-mail: litecam@rsupport.com

OK

Step 9: Authorization has been completed.
 Click OK to close the page.

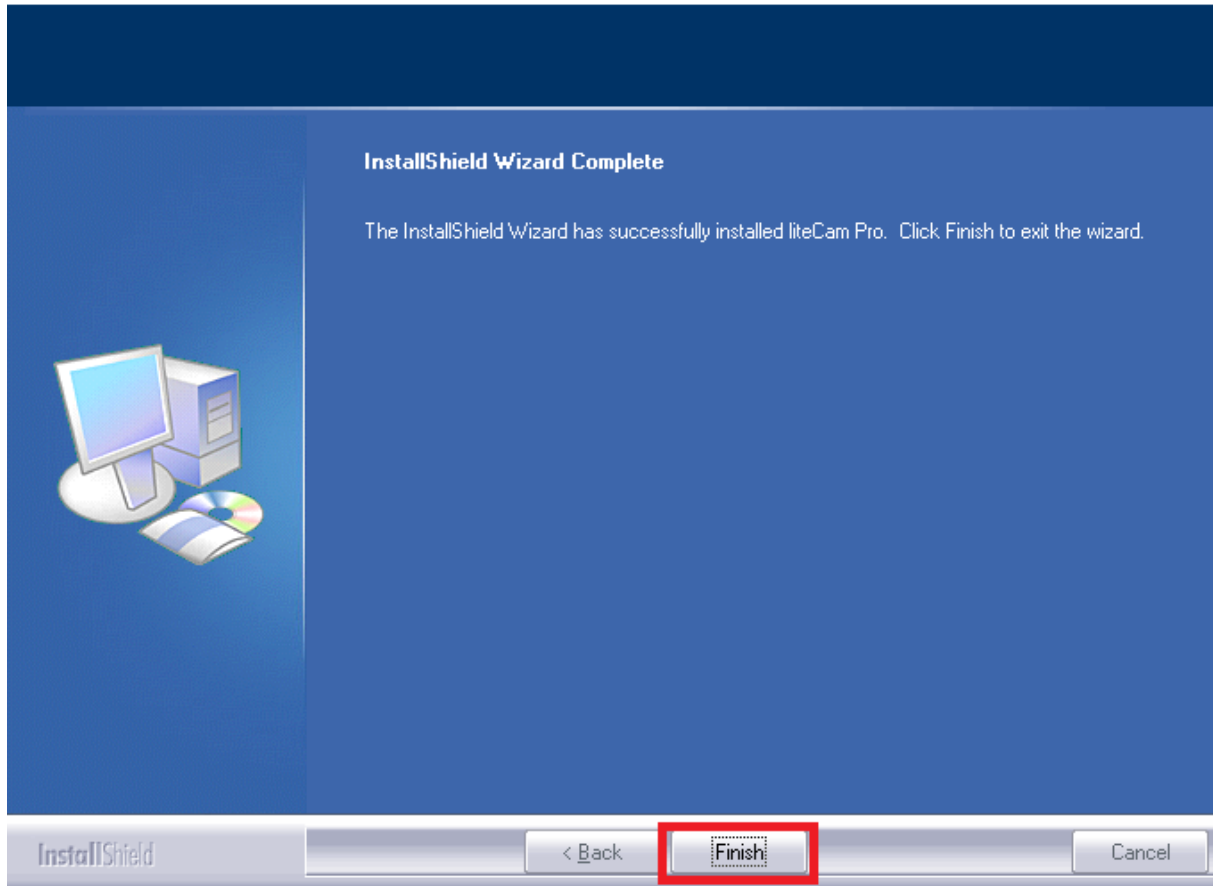


Step 10: Installing the liteCam Pro MP3 encoder (lame-enc.dll).



Step 11: liteCam Pro installation is complete. Click Finish to close the installation wizard.

liteCam Pro - InstallShield Wizard



D. LAME Installation

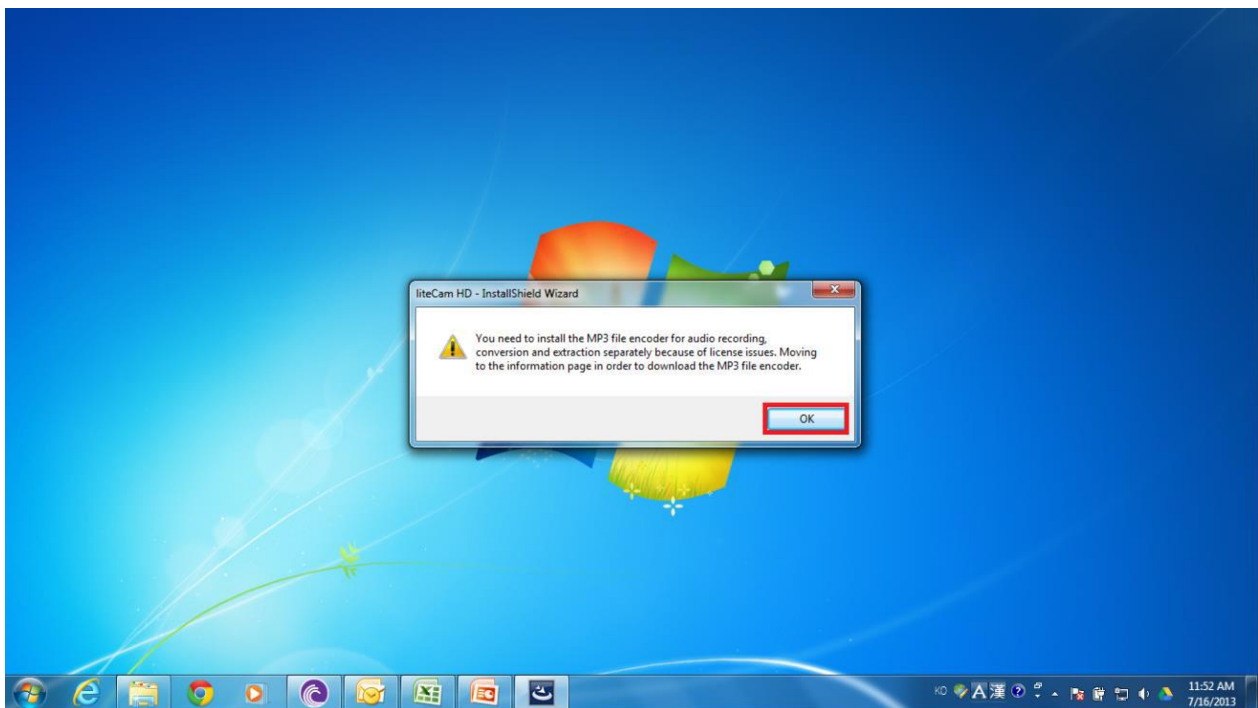
LAME is a high quality MPEG Audio layer III (3) encoder. To have an MP3 option, or to save or convert audio to MP3 format, the LAME encoder must be installed on your computer.

During installation you will see a dialog box which will prompt you to install the MP3 encoder (LAME).

Click "OK" to be directed to the website where you can download LAME file.

Download the zip file and extract it. Add download link in case they missed pop up

Copy and paste the "lame_enc.dll file" to the folder below (if you did not change the liteCam Pro directory) C:\Program Files\RSupport\liteCam Pro Folder.



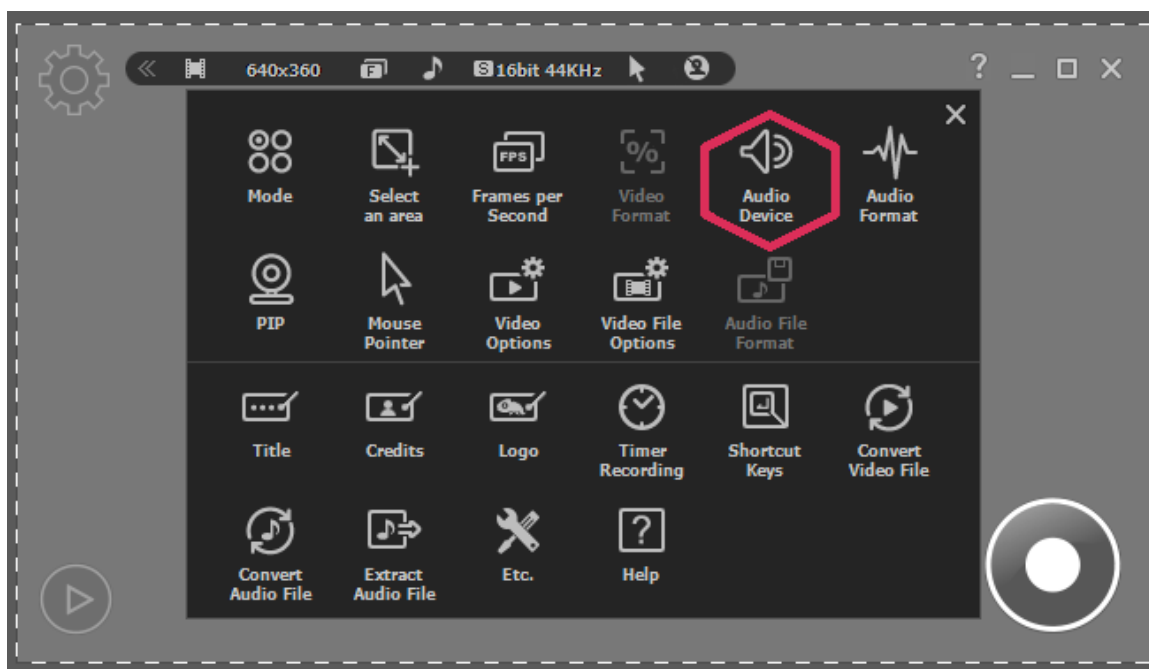
2. Settings Prior to Recording

Before recording anything on your screen using General Recording, Video Recording, Audio Recording, or Android Recording, you will need to set some options that are essential for recording.

A. Audio Device

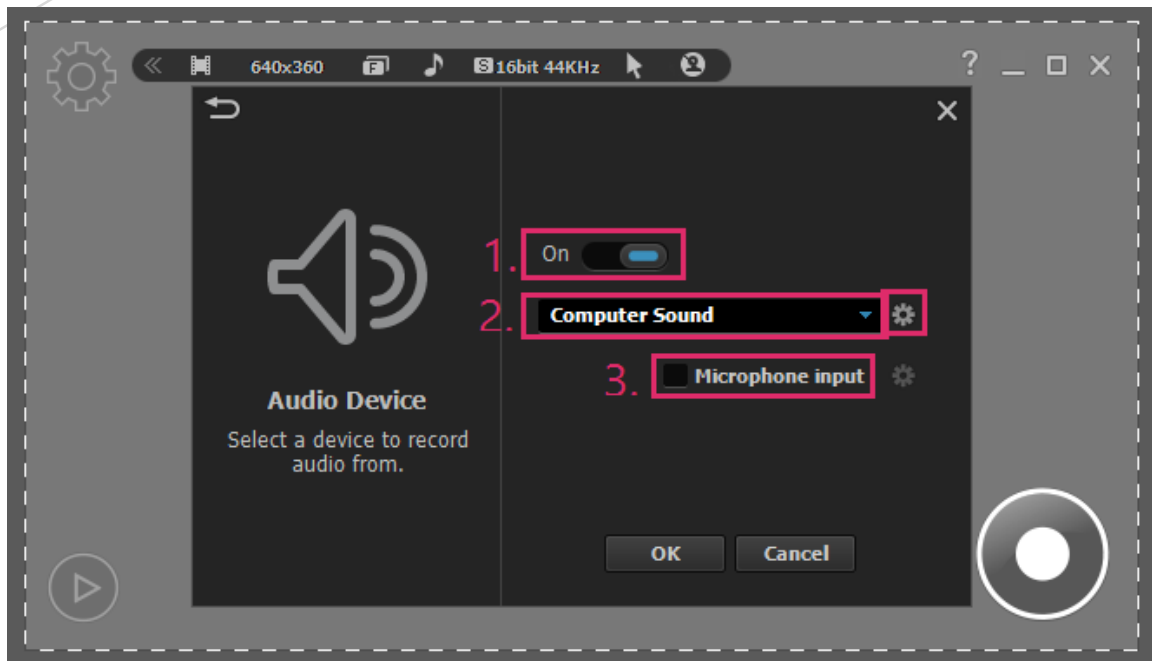
When recording using General Recording, Video Recording or Audio Recording, you need to select the audio device that will capture the sound in your recording. You can either choose to record computer sound, or sound from a microphone that will need to be connected. You will also have the choice to record both the computer and microphone sounds simultaneously.

Start liteCam Pro> Option> Audio Device



You can select a device that you wish to record sound/audio from.

1. Toggle ON
2. Choose either computer or microphone sound
3. For dual recording, select computer sound and check microphone input, as well.



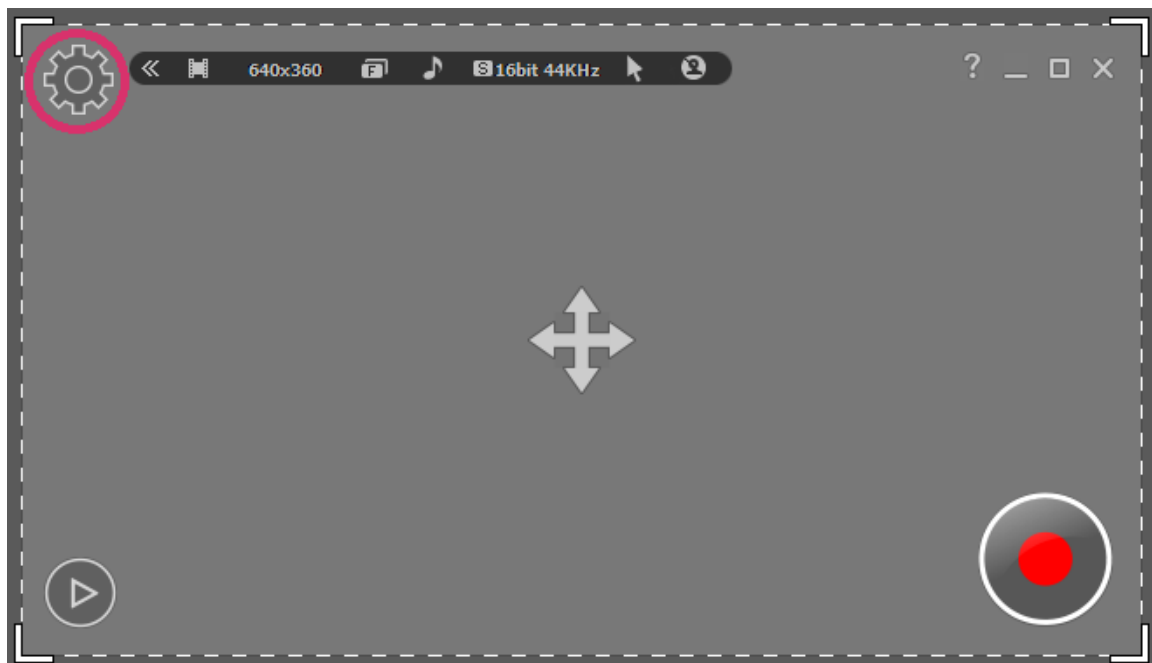
B. Video Options

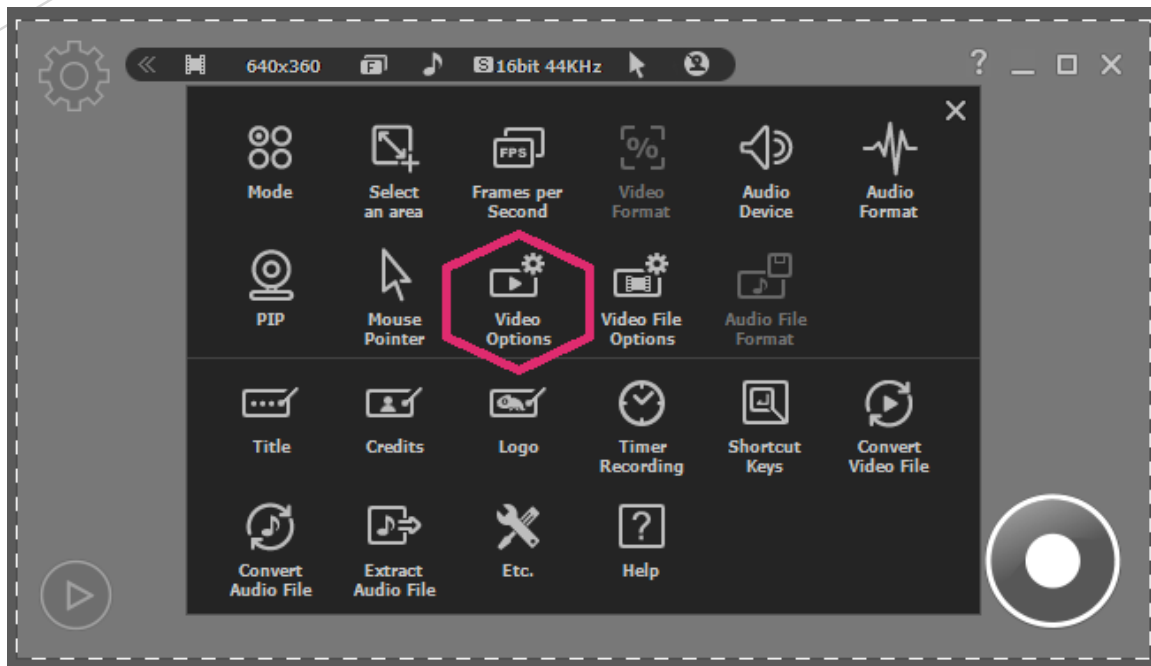
When recording using General Recording or Video Recording, you can choose video options to use, such as "Automatic Video Overlay", and "Automatic Hardware Acceleration".

When recording in full screen, select "Icon in the taskbar". This function will allow you to view the entire screen of the monitor without any issues.

Also, you can choose which picture format to save your captured screenshots in.

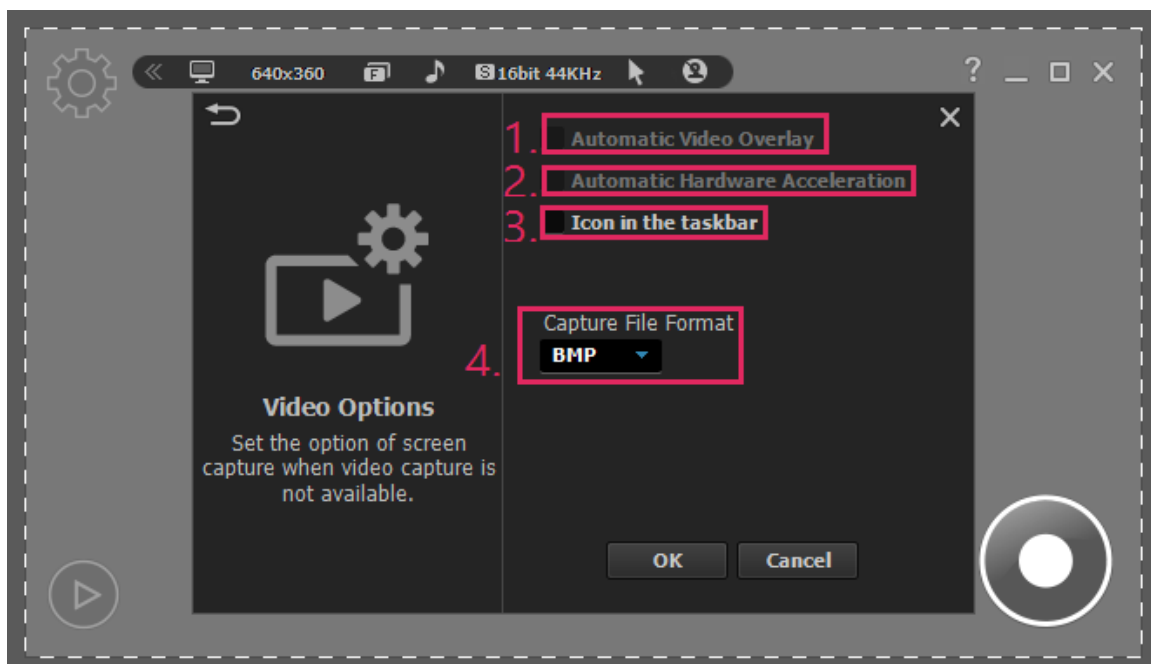
Start liteCam Pro > Option > Video Options





Choose the settings you wish to use

1. Automatic Video Overlay
2. Automatic Hardware Acceleration
3. Icon in the Taskbar
4. Captured file format



C. Video File Options

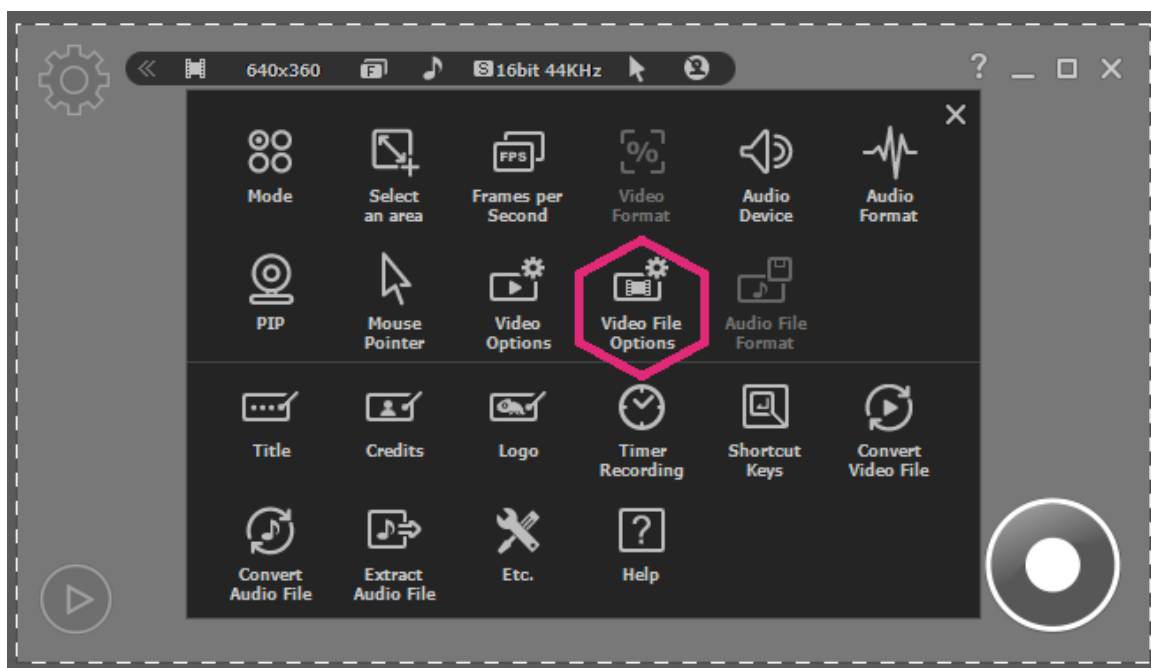
Choose the file format you wish to save your recorded files in.

Select the video Codec you wish to use, and select the audio Codec. If your computer file system is FAT 32, you will need to select "Continuous Recording" to create a new recording file when the recording file size reaches 4GB.

Note: for computers with FAT 32 file systems, the maximum size of a single file is 4GB.

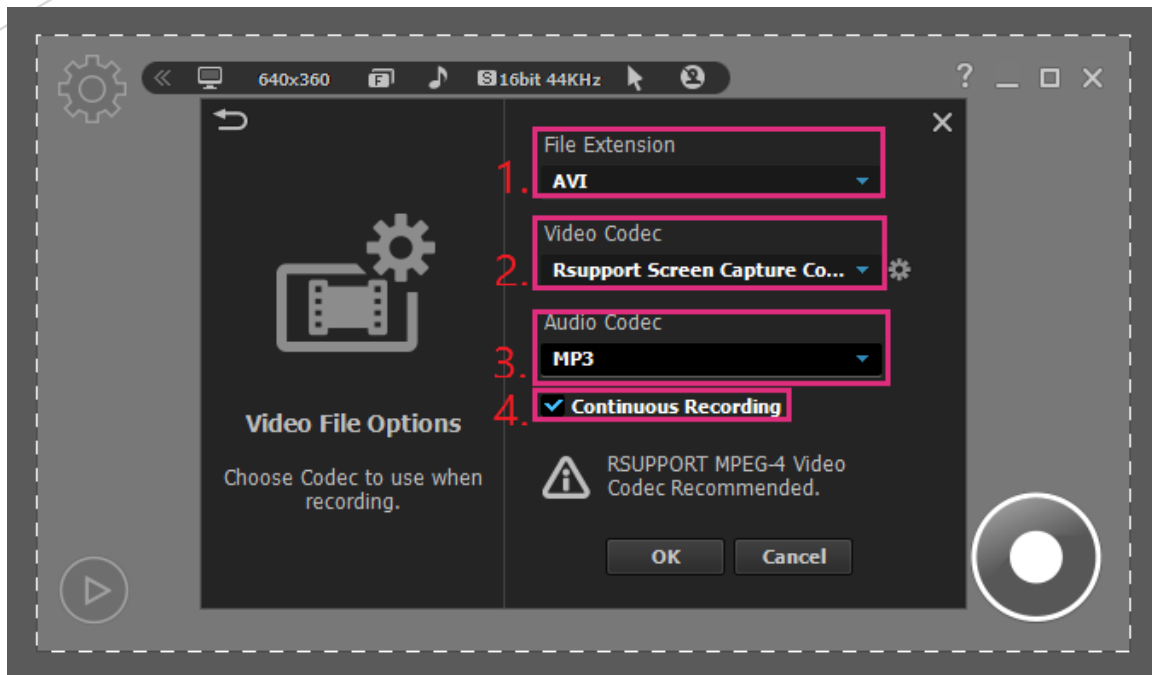
This option is available for General Recording and Video Recording modes.

Start liteCam Pro> Option> Video Recording Options.



Select File Extension, Video Codec, and Audio Codec

1. File Extension: AVI or MP4
2. Video Codec
3. Audio Codec
4. Continuous Recording (only for FAT 32 File System) Not necessary for NTFS

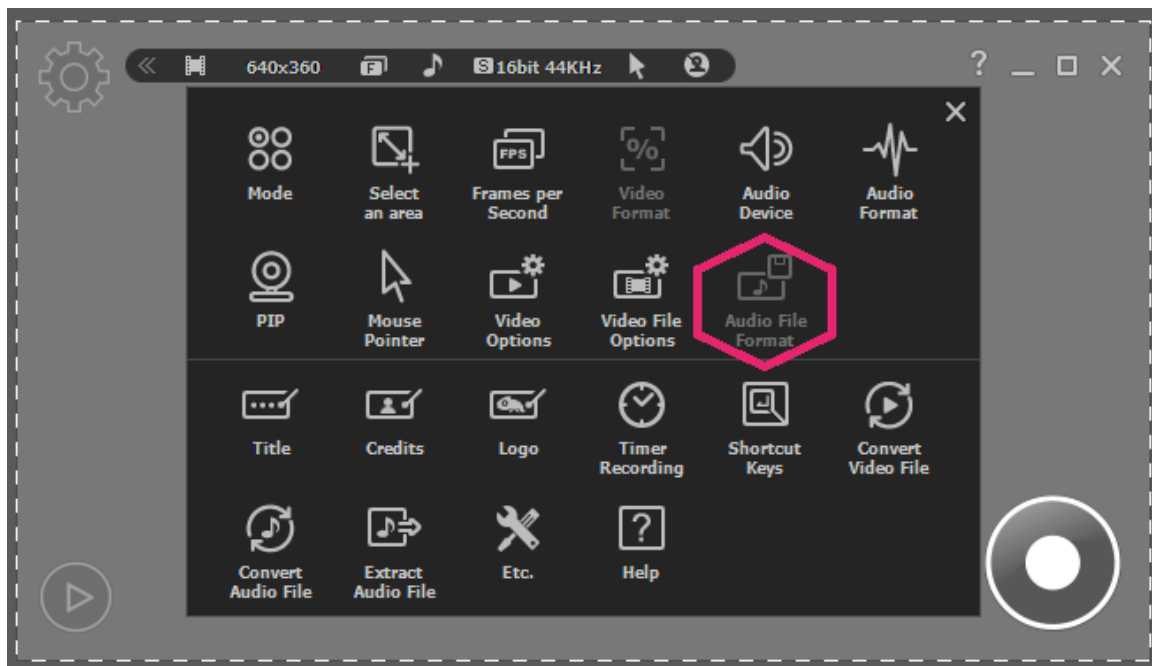


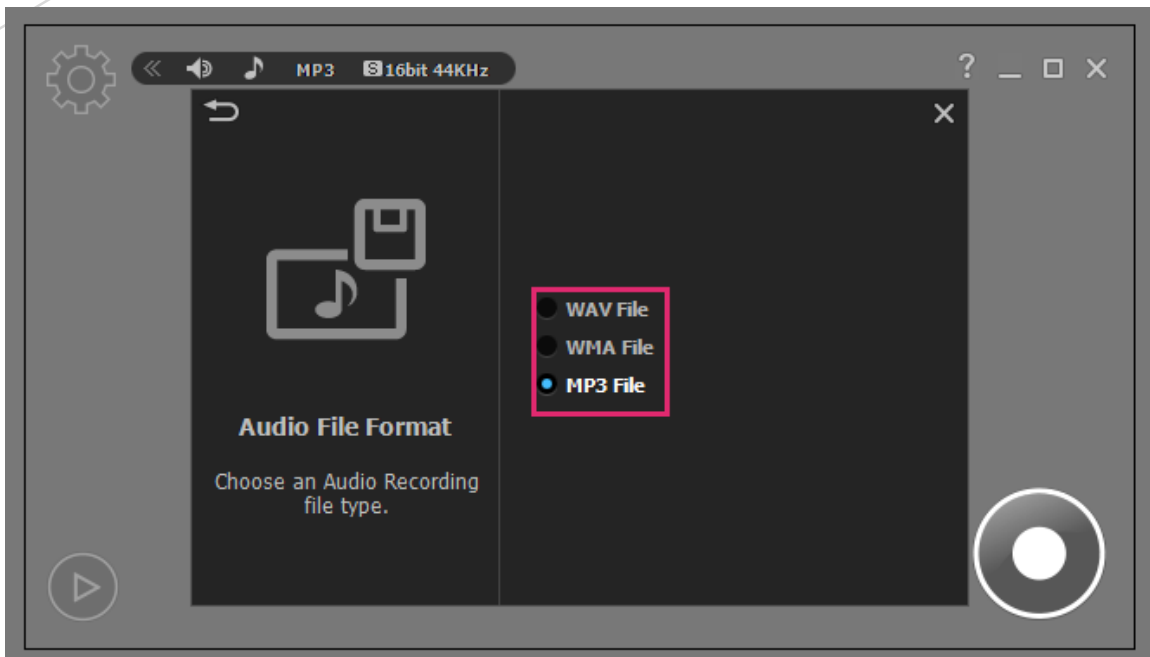
D. Audio File Format

When using Audio Recording mode, select the audio format you wish to save your recorded audio files in. You can choose between different file formats, liteCam Pro has 3 types of formats, WAV, WMA, and MP3.

Start liteCam Pro> Options> Audio File Options.

NOTE: You can only select this option when you are using Audio Recording mode.



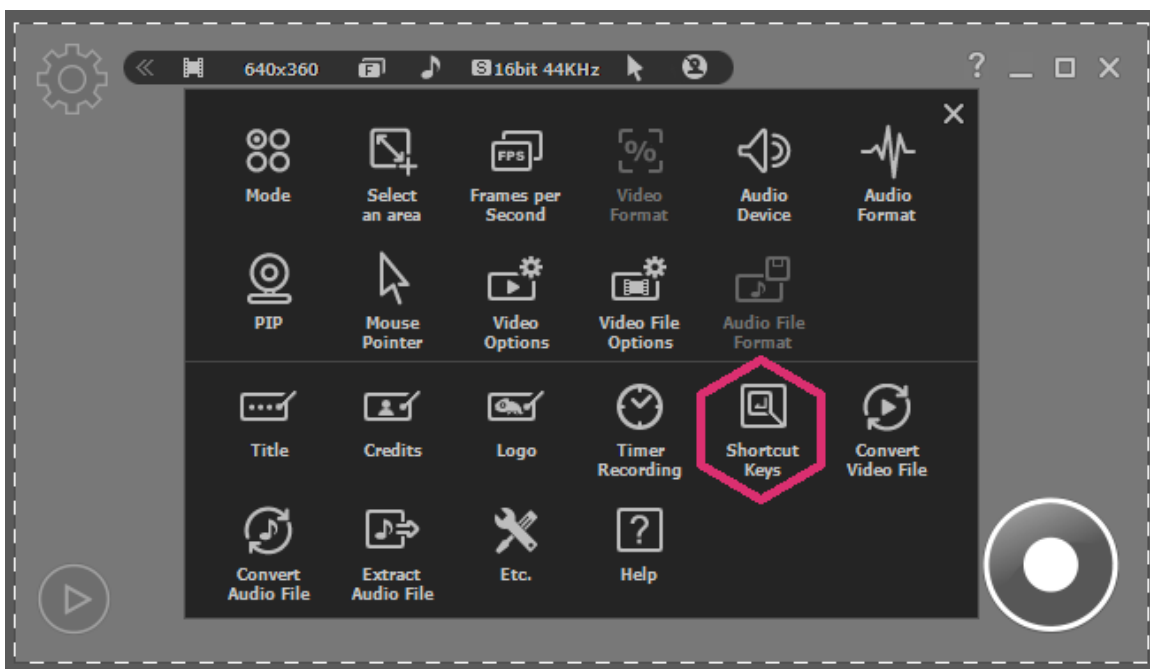


E. Shortcut Keys

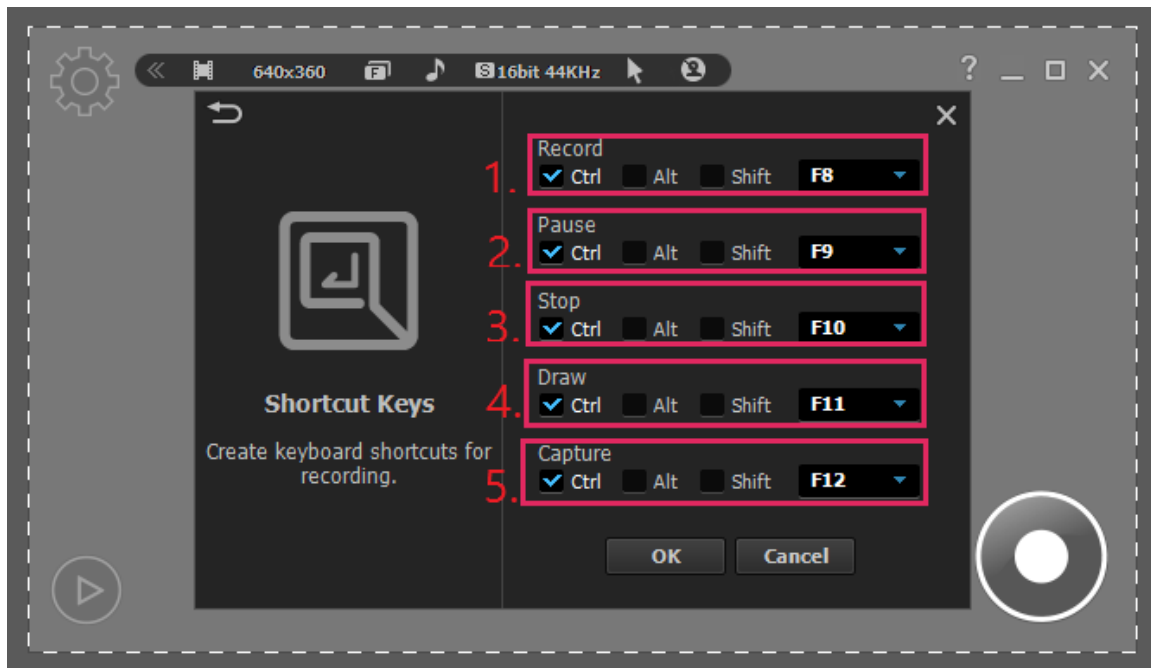
Shortcut keys help provide an easier and quicker way of using liteCam Pro while recording using General, Video, Audio and Android Recording modes.

You can create shortcut keys for the following options: "Start", "Pause", "Stop", "Drawing", and "Screen Capture".

Start liteCam Pro> Options> Shortcut Keys.



Choose the keys you wish to use as shortcuts during recording. Create shortcut keys for "Start", "Pause", "Stop", "Draw", and "Capture".



3. Recording Mode

liteCam Pro has 4 different recording modes suited for different purposes. They are General Recording, Video Recording, Audio Recording, and Android Recording.

- **General Recording** is for recording computer screen activities, such as software demonstrations, text writing, and presentations. When recording your computer screen, it is recommended to use RSCC (Rsupport Screen Capture Codec). This Codec clearly displays text.
- **Video Recording** is for recording non-streaming or streaming videos such as YouTube videos and movies. When recording videos, it is recommended to use "RSUPPORT MJPEG Codec".
- **Audio Recording** is for recording sounds from your computer, microphone or from an external line. Save files to WAV, WMA, and MP3 formats.
- **Android Recording** is for recording the Android screen activities. Android Recording is compatible with Android mobile devices running Android 4.1 and above.

A. One-Click Recording

It is a simple one-click on the record button that will start liteCam Pro to record any activity on the screen, or any sound from the computer or microphone. In Audio Recording Mode, the audio device and audio file format must be set before you start recording.

Select Recording Area you can move the recording area through the "arrow cross" in the middle of the liteCam Pro window. Drag and drop the window corners of the liteCam Pro window to resize the recording area.

Note: this is only for General Recording and Video Recording Modes.

Clicking the Recording Button as soon as you click the recording button, the countdown to recording will start in...3..2..1.

Finish Recording when you have finished recording, click the "Pause/Stop" button in the right corner of the window to stop the recording.

B. General Recording

Record and capture any activity on your computer screen such as software demonstrations, text writing, presentations and more.

i. Select Recording Area

Move the recording area through the “arrow cross” in the middle of the liteCam Pro window. Drag and drop the window corners of the liteCam Pro window to resize the recording area. From the toolbar located at the top of liteCam Pro, select the video format you wish to use.

ii. Select Frames per Second (FPS)

20 FPS is the default FPS in Video Recording mode.

To change the FPS, select the FPS button in the toolbar and choose the FPS you want.

iii. Select Audio Device

Select an audio device to record sound/audio from, which can be from either your computer or microphone. In Windows Vista, 7, 8, and 10, computer sound is the default option.

iv. Audio Format

Select the audio recording quality you wish to have.

In the toolbar, select the “Audio Format” button and choose the audio file format you wish to use while recording.

Mono, 16 bit, 22 KHz is fine. To record in high quality, use Stereo, 16 bit, 44 KHz.

v. Click Record Button

Recording will start in 3..2..1.

vi. Finish Recording

When you have finished recording, click the “Pause/Stop” button in the right corner of the window to stop the recording.

C. Video Recording

Record non-streaming and streaming videos from any website (YouTube, Vimeo, etc.) that cannot be downloaded as video files. You can also record movies, Skype video chats and calls, and online web conference videos with audio, and etc.

i. Select Recording Area

Move the recording area through the “arrow cross” in the middle of the liteCam Pro window. Drag and drop the window corners of the liteCam Pro window to resize the recording area. From the toolbar located at the top of liteCam Pro, select the video format you wish to use.

ii. Select Frames per Second (FPS)

20 FPS is the default FPS in Video Recording mode.

To change the FPS, select the FPS button in the toolbar and choose the FPS you want.

iii. Select Audio Device

Select an audio device to record sound/audio from, which can be from either your computer or microphone. In Windows Vista, 7, 8, and 10, computer sound is the default option.

iv. Audio Format

Select the audio recording quality you wish to have.

In the toolbar, select the "Audio Format" button and choose the audio file format you wish to use while recording.

Mono, 16 bit, 22 KHz is fine. To record in high quality, use stereo, 16 bit, 44 KHz.

v. Click Record Button

Recording will start in 3..2..1.

vi. Finish Recording

When you have finished recording, click the "Pause/Stop" button in the right corner of the window to stop the recording.

D. Audio Recording

Record any sounds/audio on your computer, microphone, or both simultaneously, and convert the recordings to WAV, MP3, or WMA formats. Save or convert your recorded files as WAV, WMA, or MP# files, as well.

i. Select Audio Device

Select an audio device to record sound/audio from, which can be from either your computer or microphone. In Windows Vista, 7, 8, and 10, computer sound is the default option.

ii. Audio Format

Select the audio recording quality you wish to have.

In the toolbar, select the "Audio Format" button and choose the audio file format you wish to use while recording.

Mono, 16 bit, 22 KHz is fine. To record in high quality, use Stereo, 16 bit, 44 KHz.

iii. Audio File Format

On the toolbar, select the “Audio File Format” button and choose the audio file format you wish to use while recording.

iv. Click Record Button

Recording will start in 3..2..1.

v. Finish Recording

When you have finished recording, click the “Pause/Stop” button in the right corner of the window to stop the recording

E. Android Recording

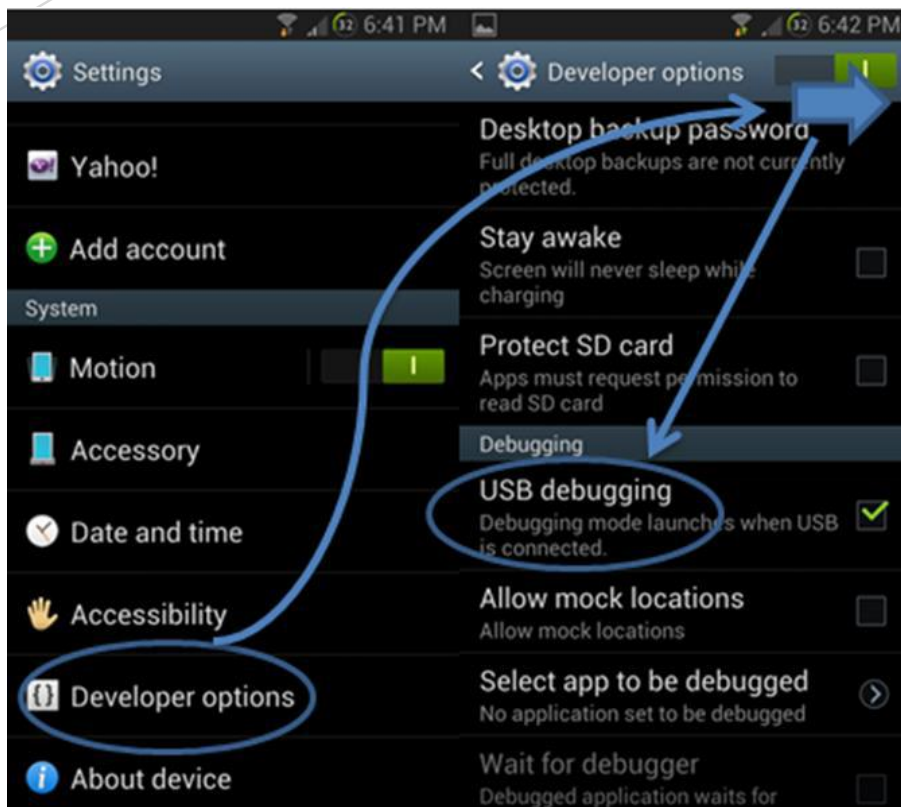
Android Recording is for recording the Android screen activities. Android Recording is compatible with Android devices running Android 4.1 and above.

i. Activate USB Debugging Mode

Enabling USB debugging mode is incredibly easy, however USB debugging is different depending on your Android device and OS version.

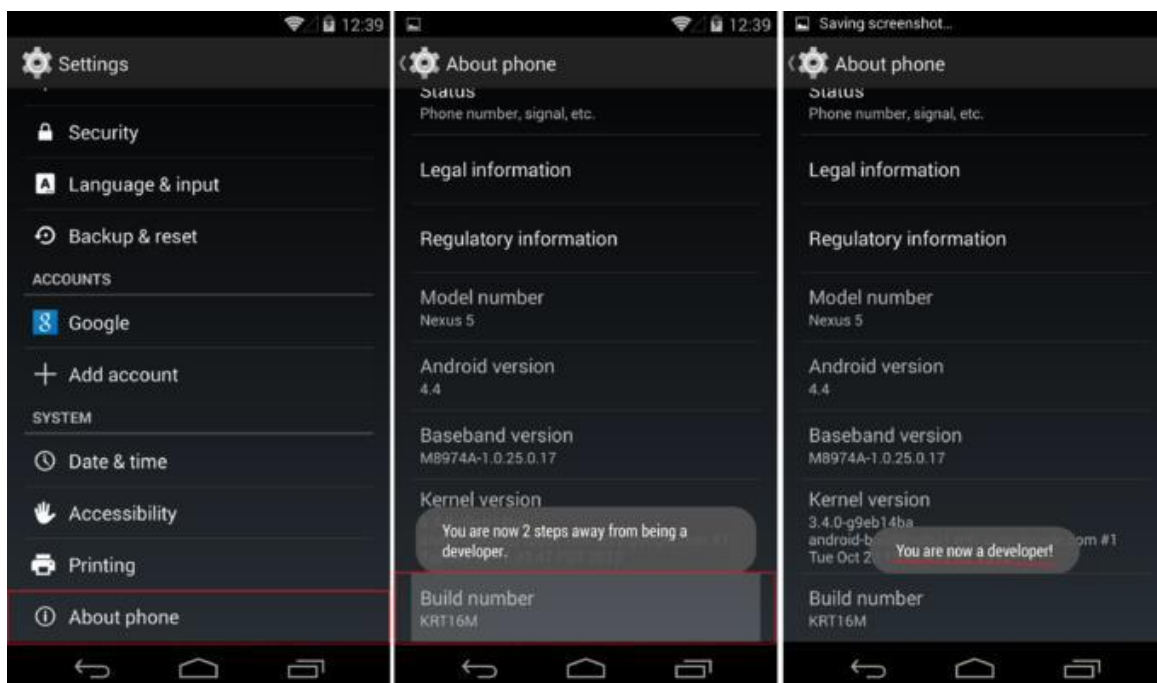
Note: Android Recording only supports Android version 4.1 and above.

Android 4.1: Go to Settings > Go to Developer Options > Slide the Developer Options Switch to turn on Developer Options > Place a Check Mark on the box beside USB Debugging / Android Debugging



Android 4.2 and Above: Go to Settings > Tap About Phone > Scroll towards the bottom and tap “Build number” between 5 and 7 times, depending on your device. You will get a short pop-up in the lower area of your display saying that you are now a developer. > Go back and now access the “Developer options” menu

* Check 'USB debugging' and click OK on the prompt.



ii. Download and Install USB Drivers

If your Android Device USB driver is installed on your PC, then you can plug in your Android device to your PC through a USB cable. If you do not have a USB Driver installed on your PC, you will need to install it.

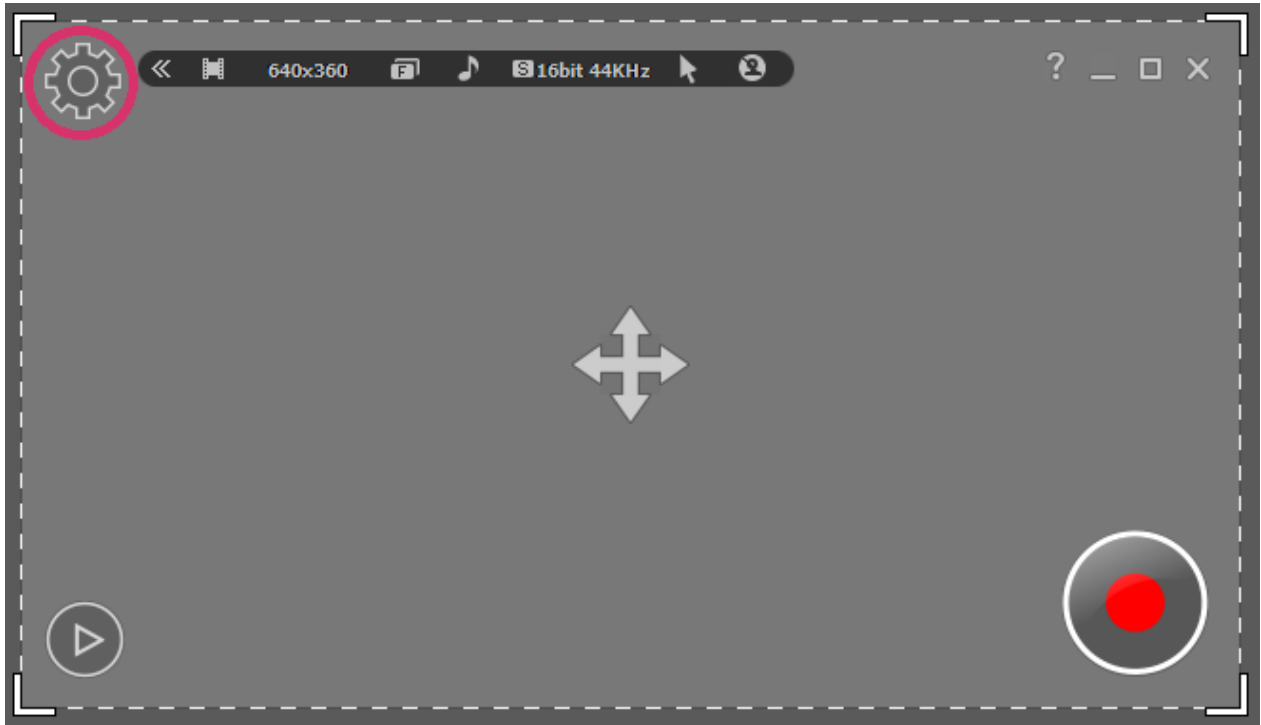
- Drivers for all others devices are provided by the device manufactures.

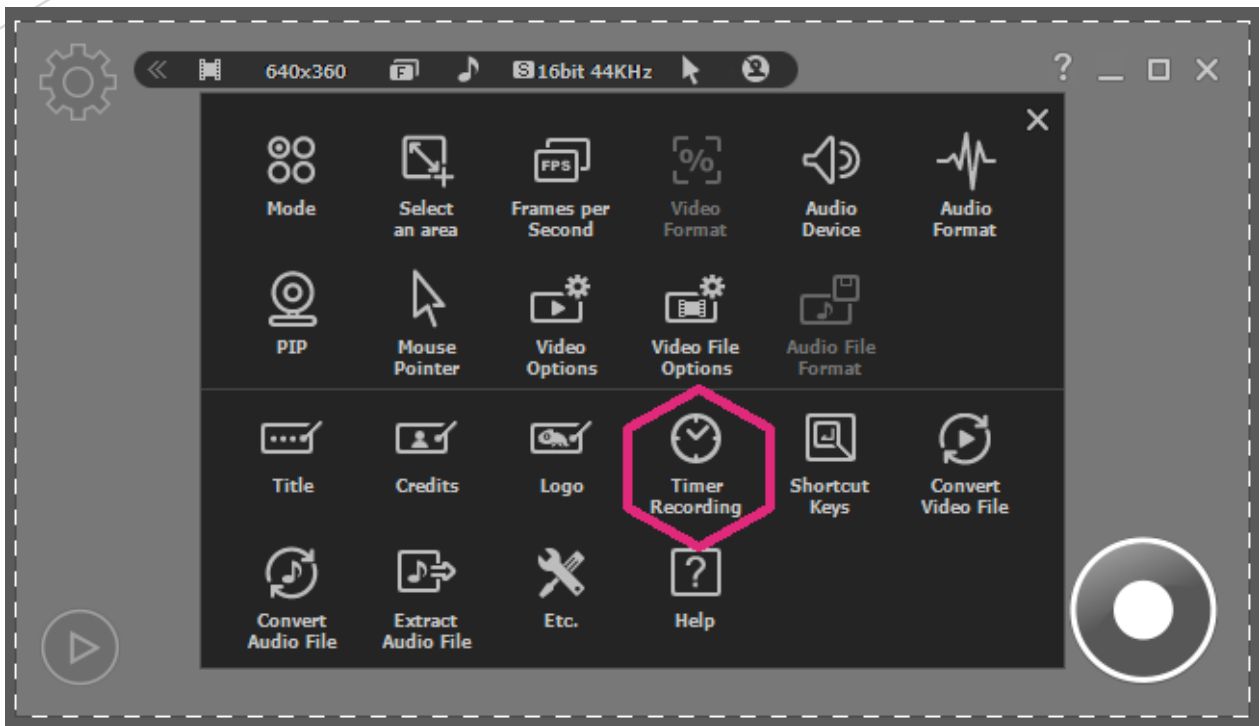
- Acer: <http://www.acer.com/worldwide/support/mobile.html>
- ALCATEL ONE TOUCH: <http://www.alcatelonetouch.com/global-en/support/faq/usbdriver.html>
- Asus: <http://support.asus.com/download/>
- Dell: <http://support.dell.com/support/downloads/index.aspx?c=us&cs=19&l=en&s=dhs&~ck=anavml>
- Foxconn: <http://drivers.cmcs.com.tw/>
- Fujitsu: <http://www.fmworld.net/product/phone/sp/android/develop/>
- Garmin Asus: https://www.garminasus.com/en_US/support/pcsync/
- Google: <http://developer.android.com/sdk/win-usb.html#download>
- Hisense: <http://app.hismarttv.com/dss/resourcecontent.do?method=viewResourceDetail&resourceId=16&type=5>
- HTC: <http://www.htc.com>
- Huawei: <http://www.huaweidevice.com/worldwide/downloadCenter.do?method=index>
- Intel: <http://www.intel.com/software/android>
- KT Tech: <http://www.kttech.co.kr/cscenter/download05.asp>
- Kyocera: http://www.kyocera-wireless.com/support/phone_drivers.htm
- Lenovo: <http://developer.lenovomm.com/developer/download.jsp>
- LG: <http://www.lg.com/us/mobile-phones/mobile-support/mobile-lq-mobile-phone-support.jsp>
- Motorola: http://developer.motorola.com/docstools/USB_Drivers/
- MTK: http://online.mediatek.com/Public%20Documents/MTK_Android_USB_Driver.zip
- Oppo: http://www.oppo.com/index.php?q=software/view&sw_id=631
- Pantech: <http://www.isky.co.kr/cs/software/software.sky?fromUrl=index>
- Pegatron: http://www.pegatroncorp.com/download/New_Duke_PC_Driver_0705
- Samsung: <http://www.samsung.com/us/support/downloads>
- Sharp: <http://k-tai.sharp.co.jp/support/>
- SK Telesys: <http://www.sk-w.com/service/wDownload/wDownload.jsp>
- Sony Mobile: <http://developer.sonymobile.com/downloads/drivers/>
- Teleepoch: <http://www.teleepoch.com/android.html>
- Toshiba: <http://support.toshiba.com/sscontent?docId=4001814>
- Yulong Coolpad: <http://www.yulong.com/product/product/product/downloadList.html#downListUL>
- Xiaomi: <http://www.xiaomi.com/c/driver/index.html>
- ZTE: <http://support.zte.com.cn/support/news/NewsDetail.aspx?newsId=1000442>

F. Timer Recording

Schedule to record a video, audio, or screen activities at a particular time, and start or end after a certain length of time. When you have finished recording, you can schedule your computer to shutdown automatically.

Start liteCam Pro> Options> Timer Recording.

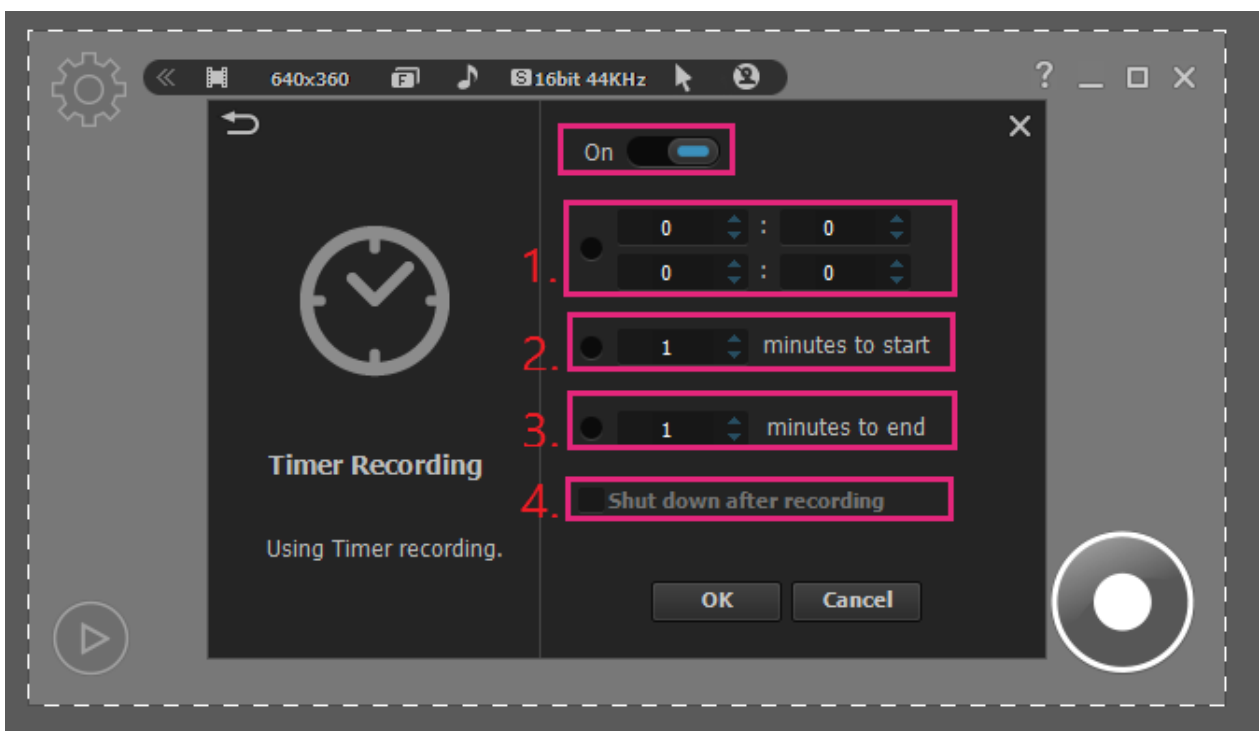




Choose the options available.

1. Choice 1, set start and end time.
2. Choice 2, set only the start time.
3. Choice 3, set only the end time.

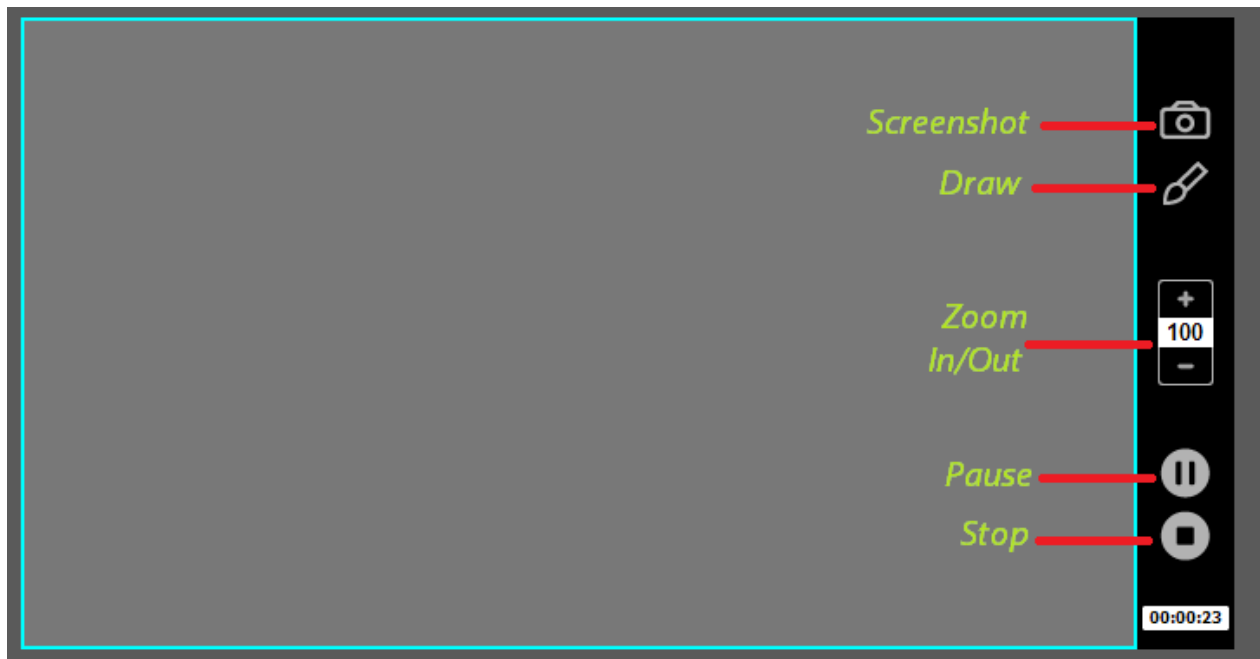
Note: this is only for General Recording and Video Recording Modes.



G. Stop/Pause Recording

While recording with liteCam Pro, you will have the option to pause any recording, capture screenshots, or draw on the recording screen.

Note: in Audio Recording mode, only the pause/stop function is available.



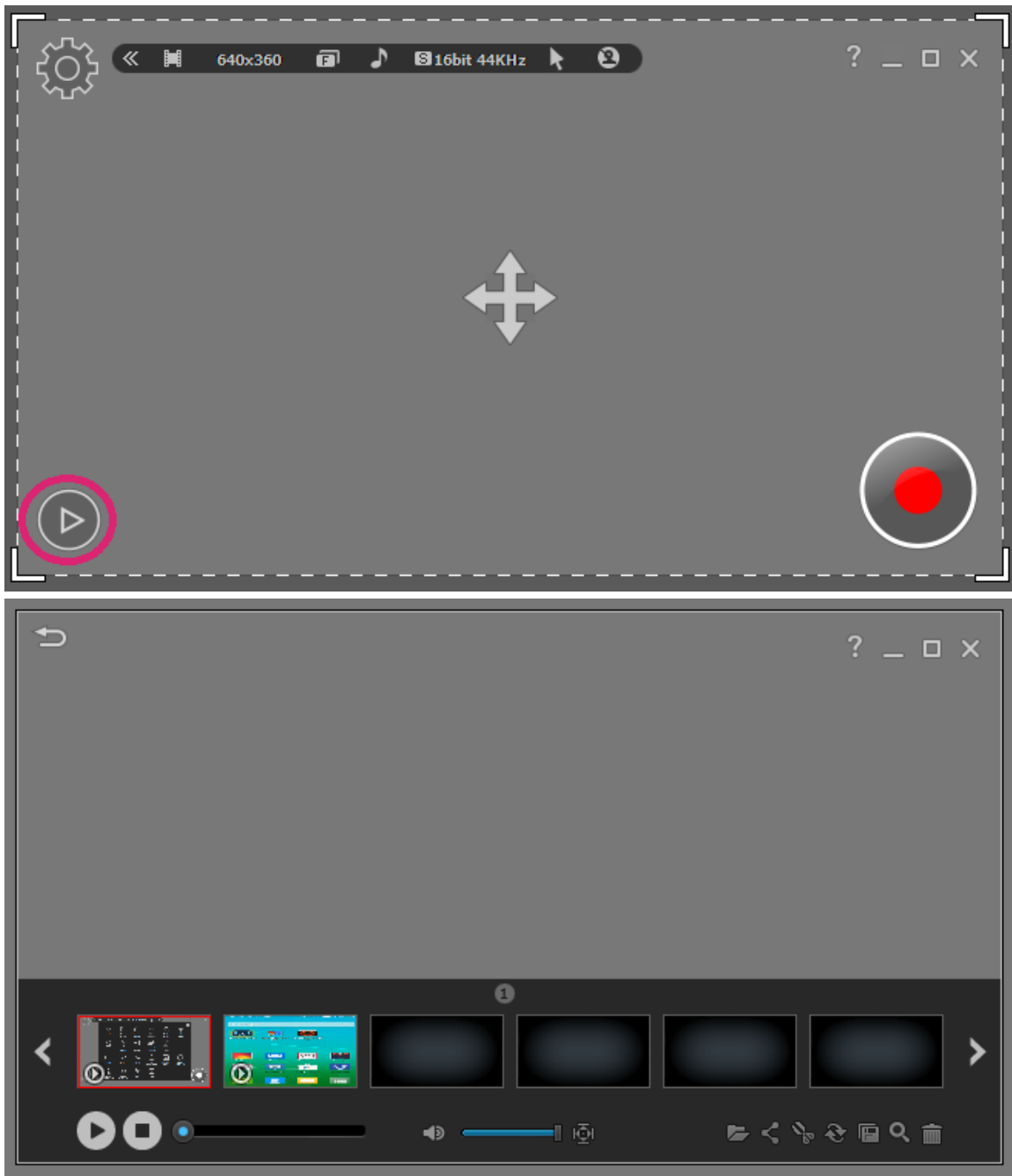
4. Preview

Your recorded videos and audio can be viewed in the preview.

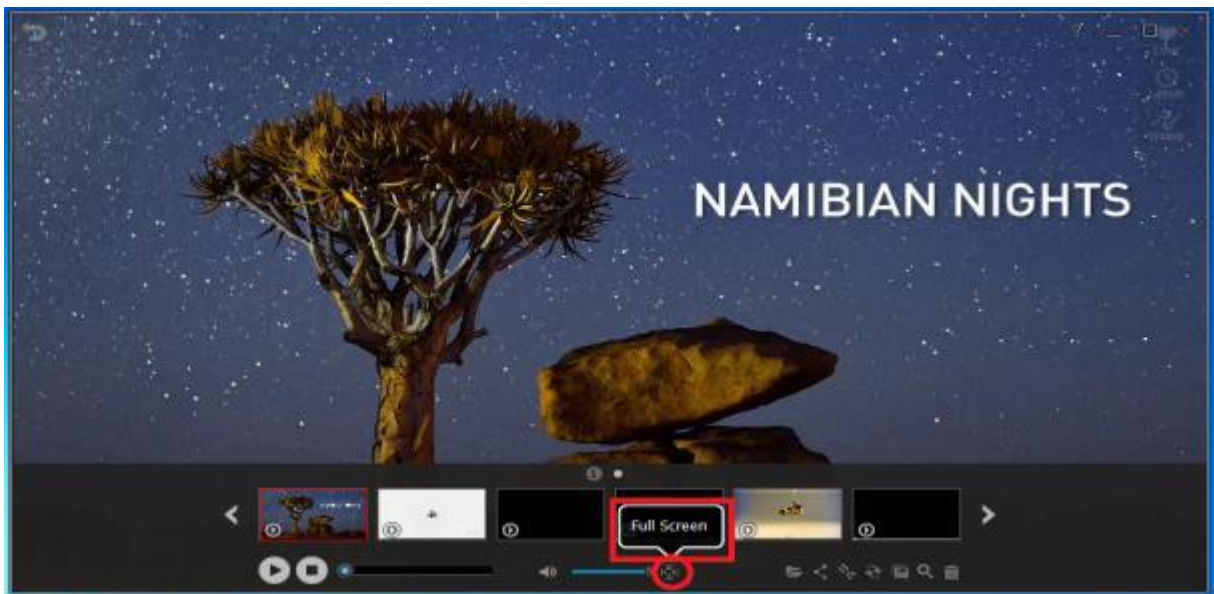
In the Preview window you can trim, convert, save as or delete your recording. You can hide or unhide the recorded file list, and you can import other files or open the work folder.

Work Folder is where all the recording files are saved.

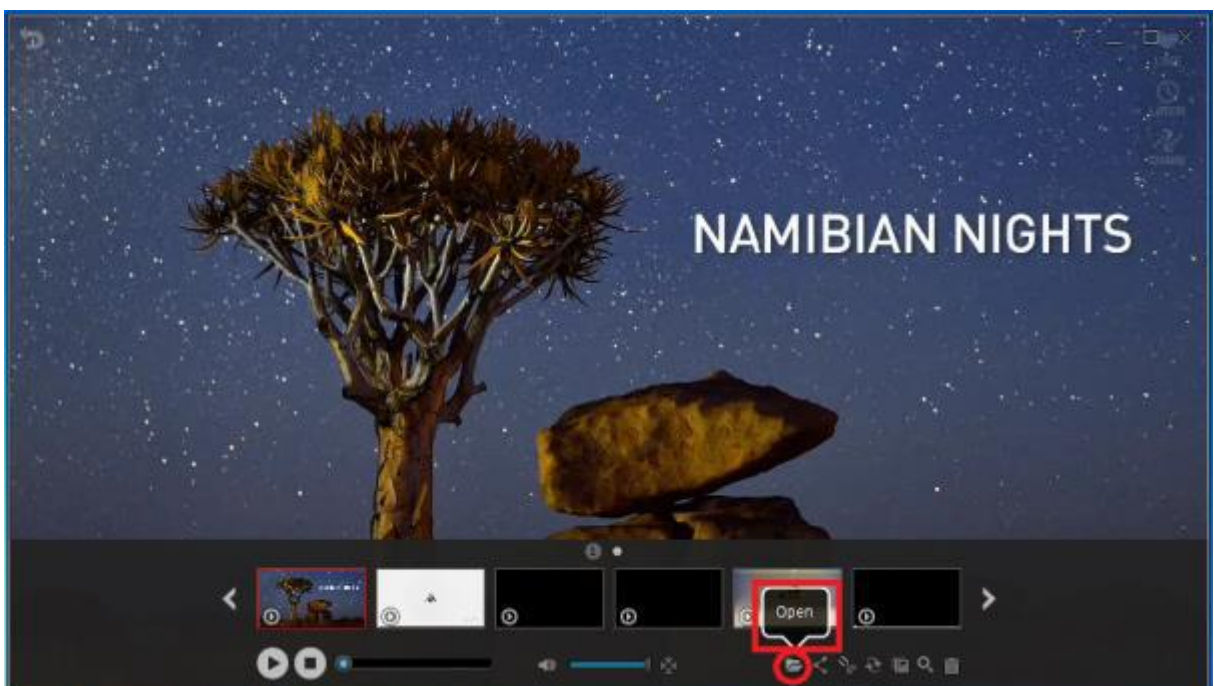
Click the Play icon in the liteCam Pro main window



Click "Full Screen" to watch your recorded videos in full screen mode.



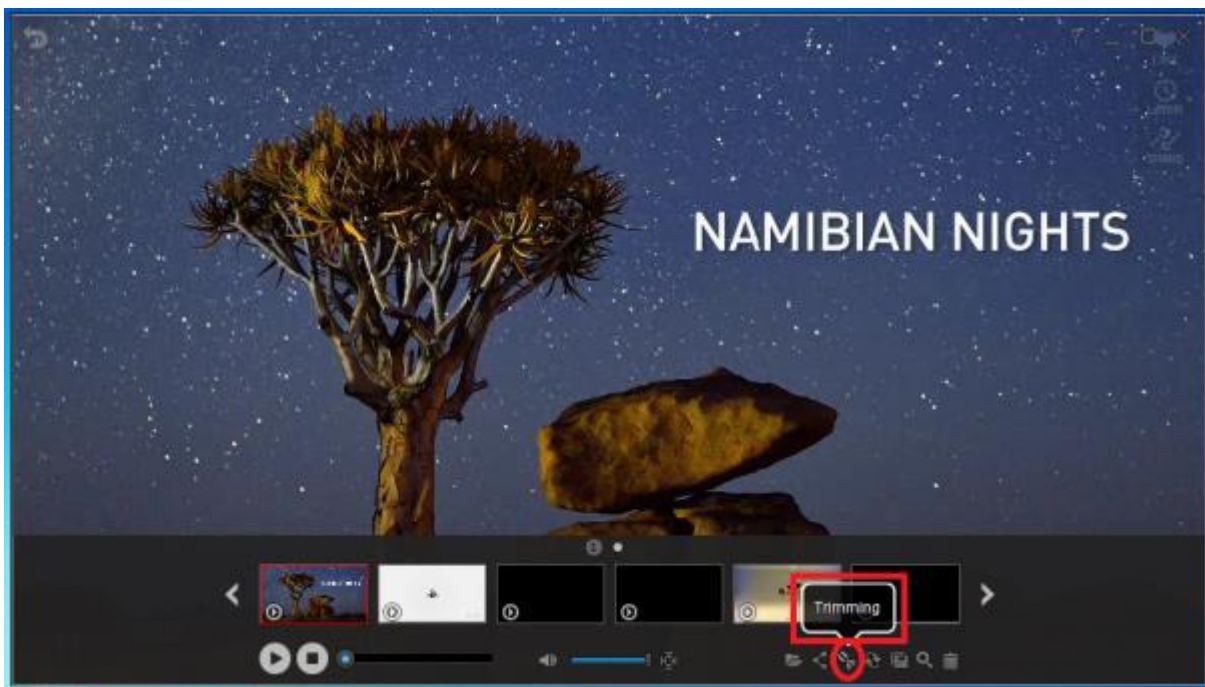
Can't find your recording in Preview? Recover it by clicking "Open" as shown below.



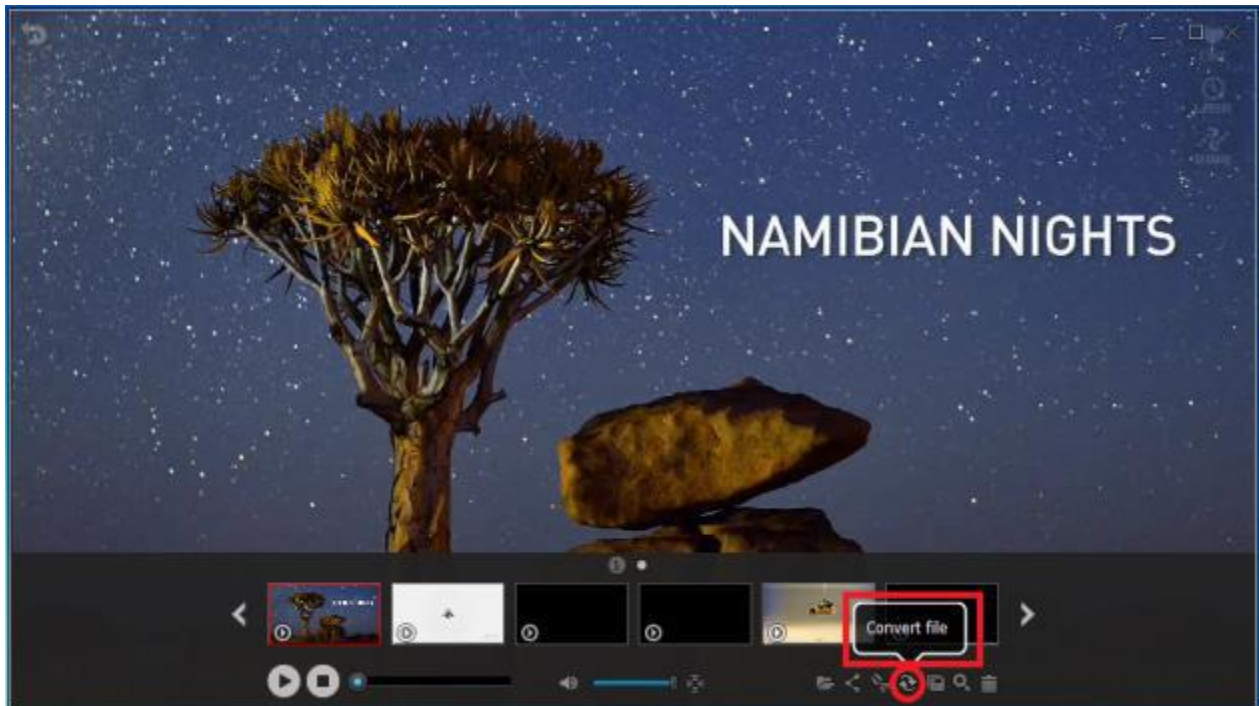
Open the work folder where you recordings are saved.
 Click "Open Folder" as shown



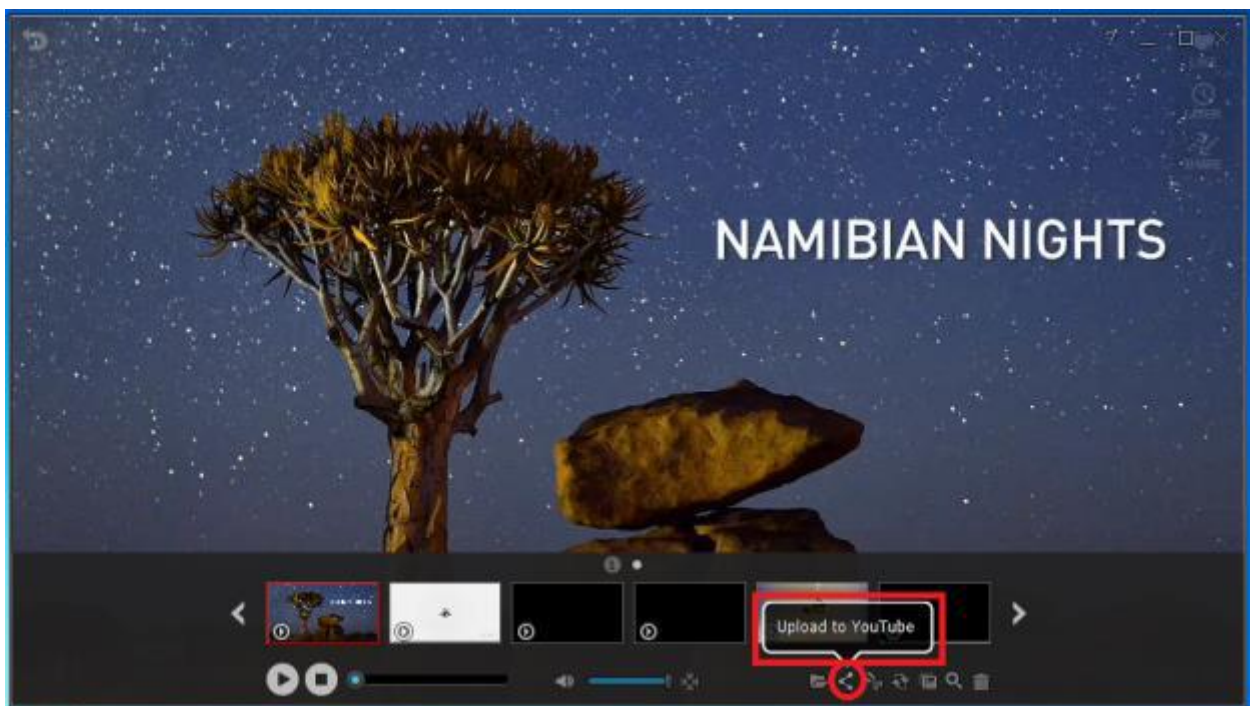
To trim your recorded video files, click the scissor icon.



To convert your recorded video or audio file, click the convert icon.



To upload your recorded video to YouTube, click "Upload to YouTube."



Before uploading your recordings to YouTube, make sure the following apply:

1. You have an active YouTube account.

2. Your video was recorded using General, Video, or Android Recording Mode.

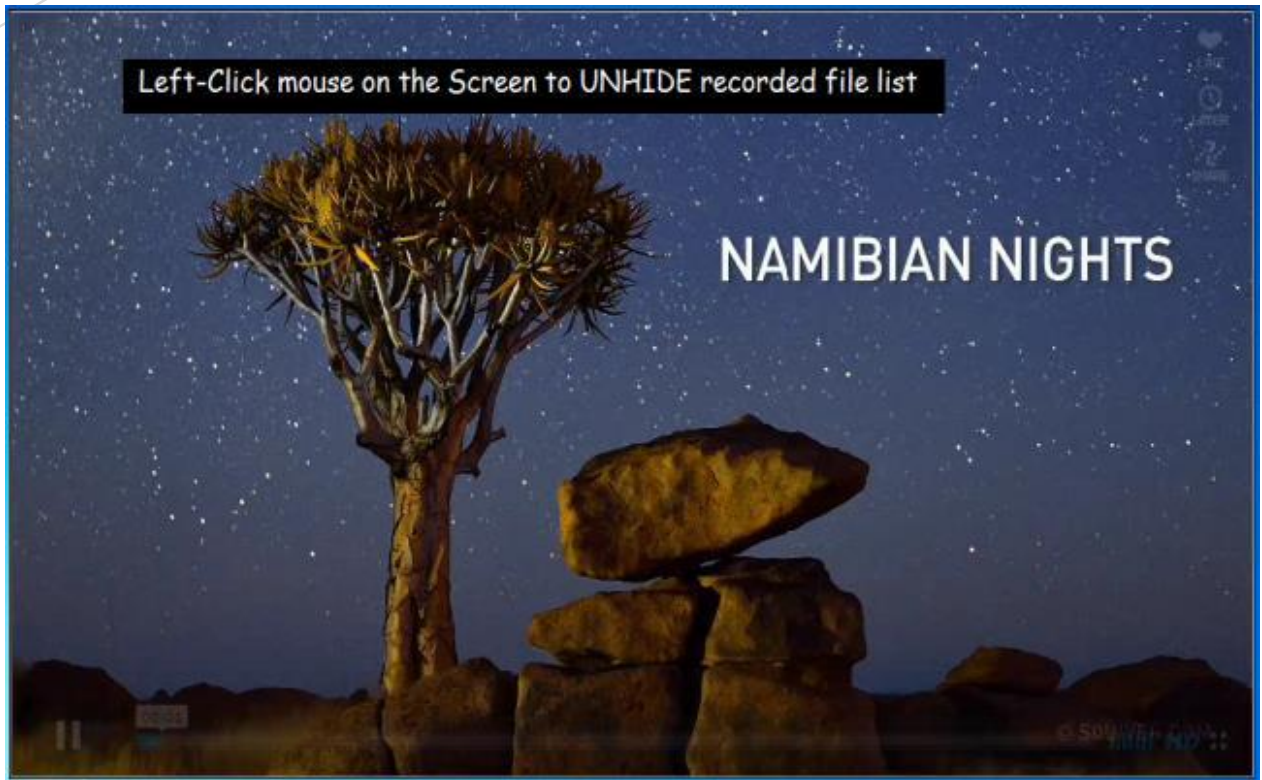
3. You have uploaded a video to your active YouTube account before.

For recordings longer than 15 minutes, change your YouTube account setting options to "Increase your limit"

Link: <https://support.google.com/youtube/answer/71673?hl=en>

To hide or unhide your recorded files list, left-click on the Preview screen.



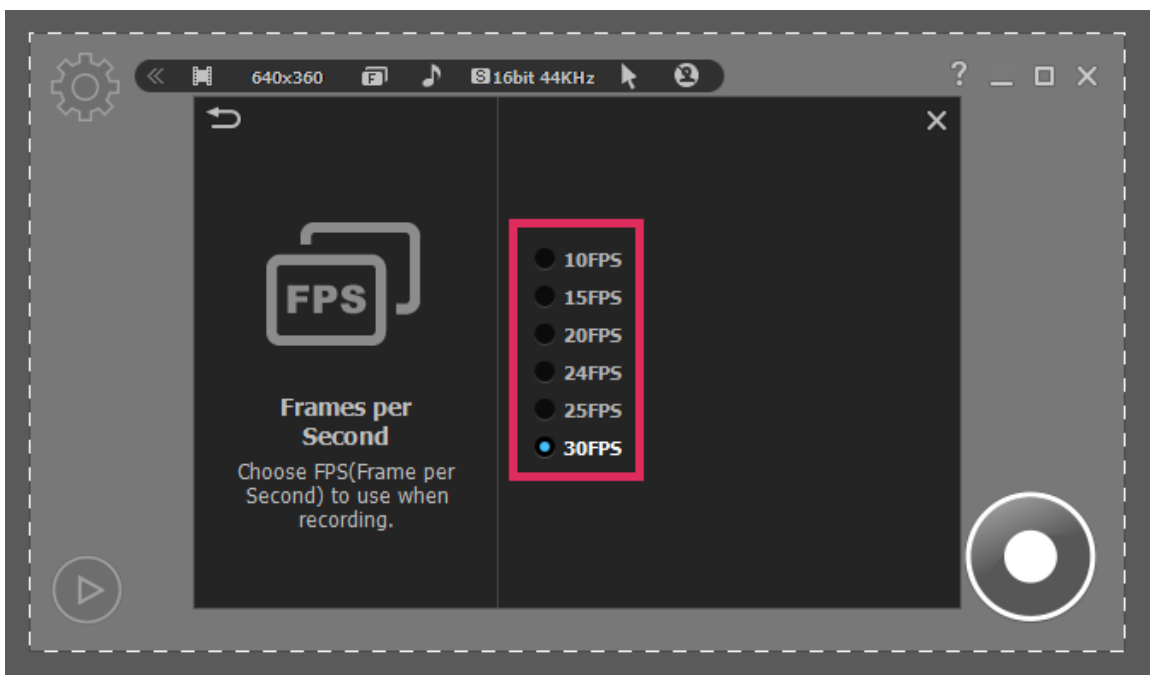
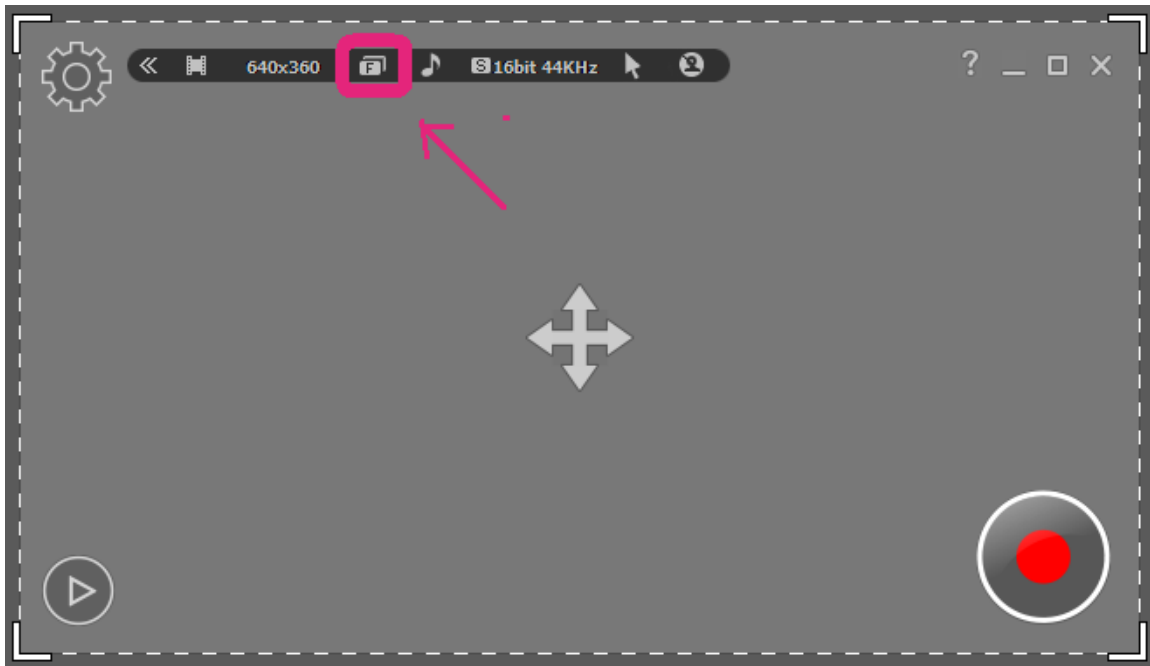


5. General Options

A. Frames Per Second

FPS measures how much information is used to store and display motion video.

The maximum FPS available to record video in General Recording, Video Recording, and Android Recording is 30 FPS.



B. Audio Format

Different audio formats have different quality. You can choose the quality you wish to use, we recommend "Mono, 16bit, 22KHz". Recorded file size will depend on the audio format selected.

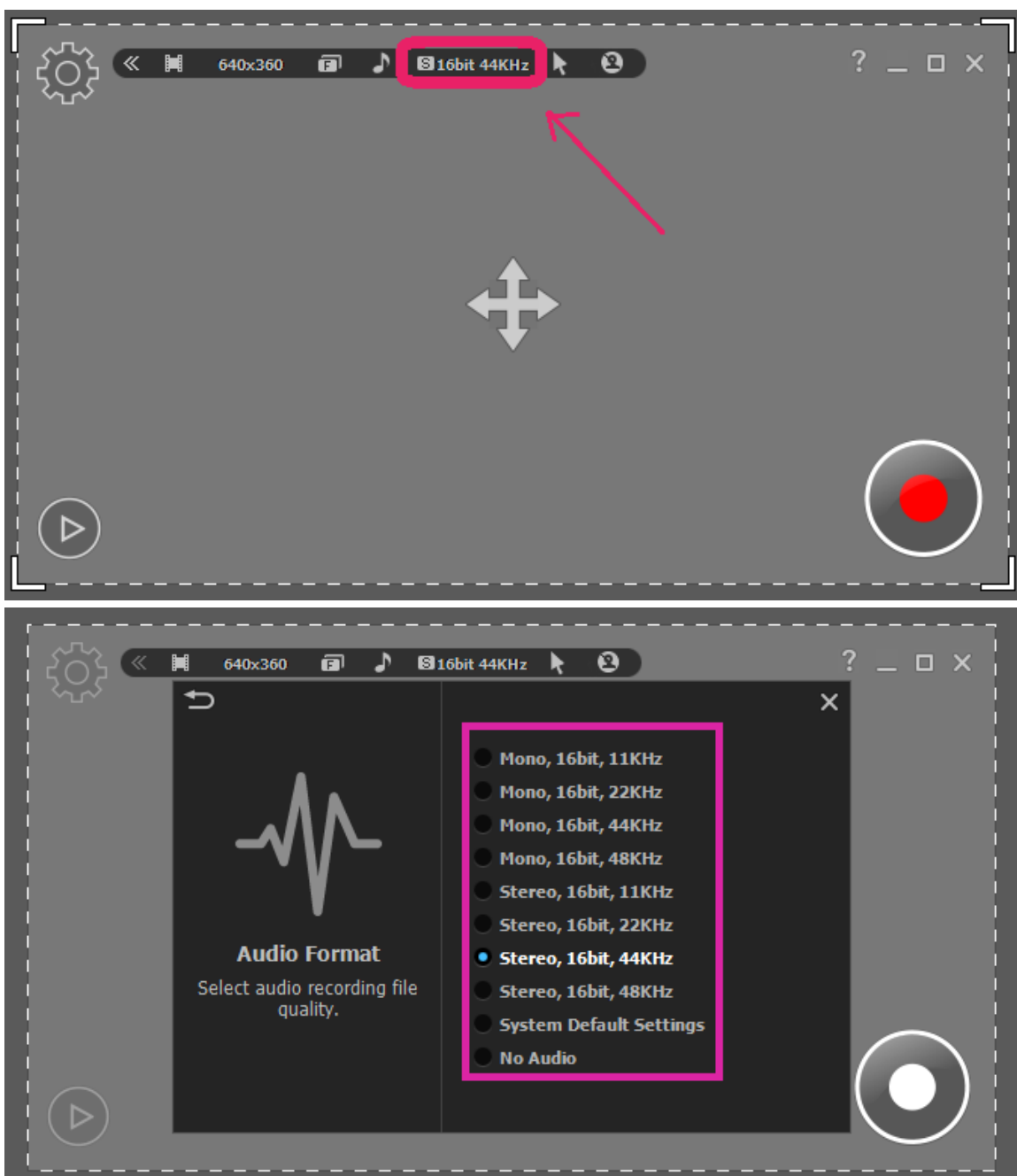
To choose the audio quality you wish to use while recording:

Mono, 16bit, 11 KHz – Stereo, 16bit, 48 KHz: record channels, bit, and sampling rate.

System Default Settings: record system sounds in Windows Vista, 7, 8, and 10.

No Audio: exclude all sound from recording.

Start liteCam Pro > Options > Audio Format



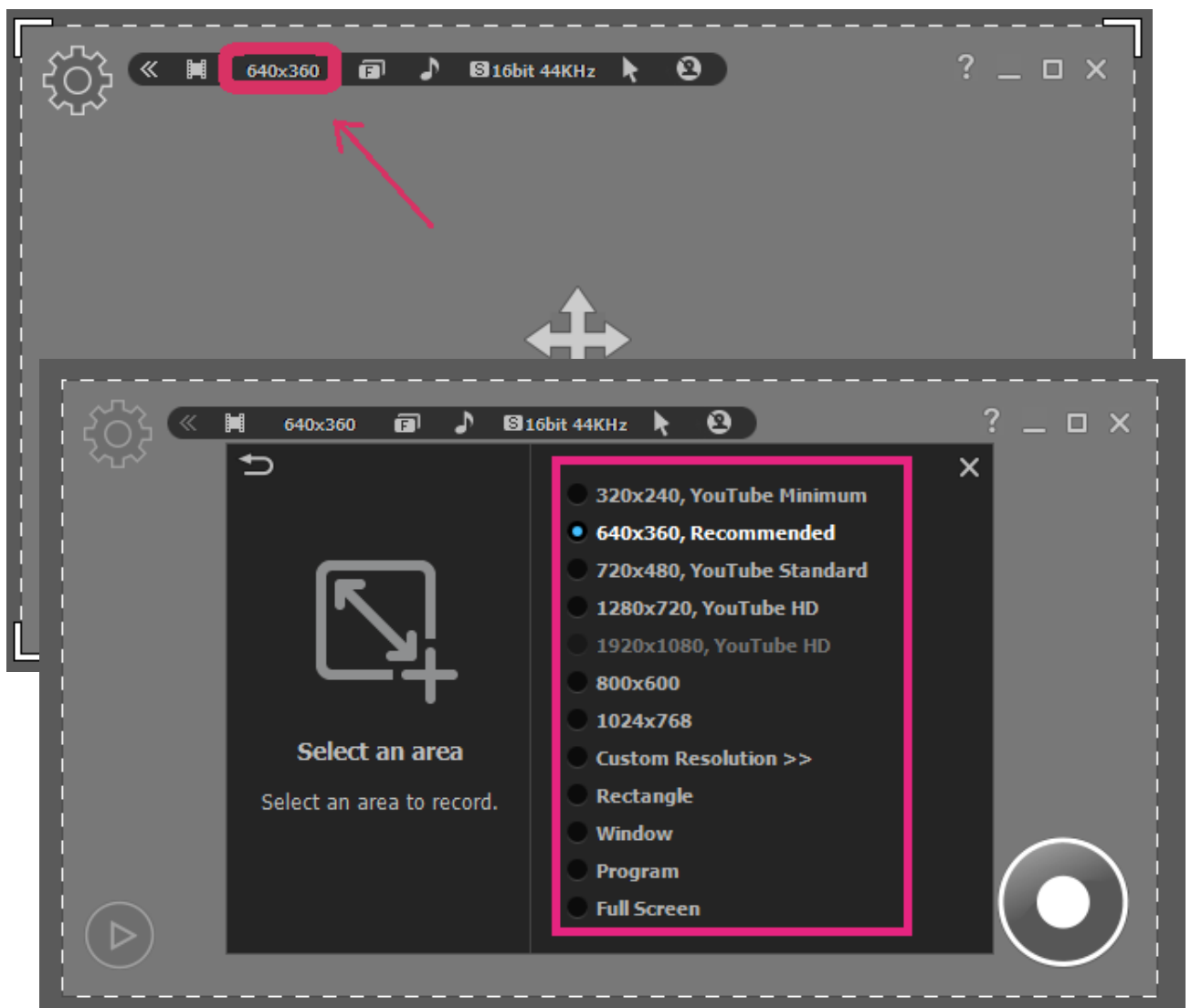
C. Select an Area

Before recording, you need to select the screen size you want to record in. There are many options to choose from.

You can select the following to record:

- Pre-defined:** 1024 x 768: select the screen resolution in the recording area.
- Custom Resolution:** record within a custom area with adjusting width and height.
- Rectangle:** select a rectangular area to record.
- Window:** select a specific window to record.
- Program:** select an active program to record.
- Full Screen:** select the full screen to record.

Click "Select the area to record" button in the toolbar on the main window.



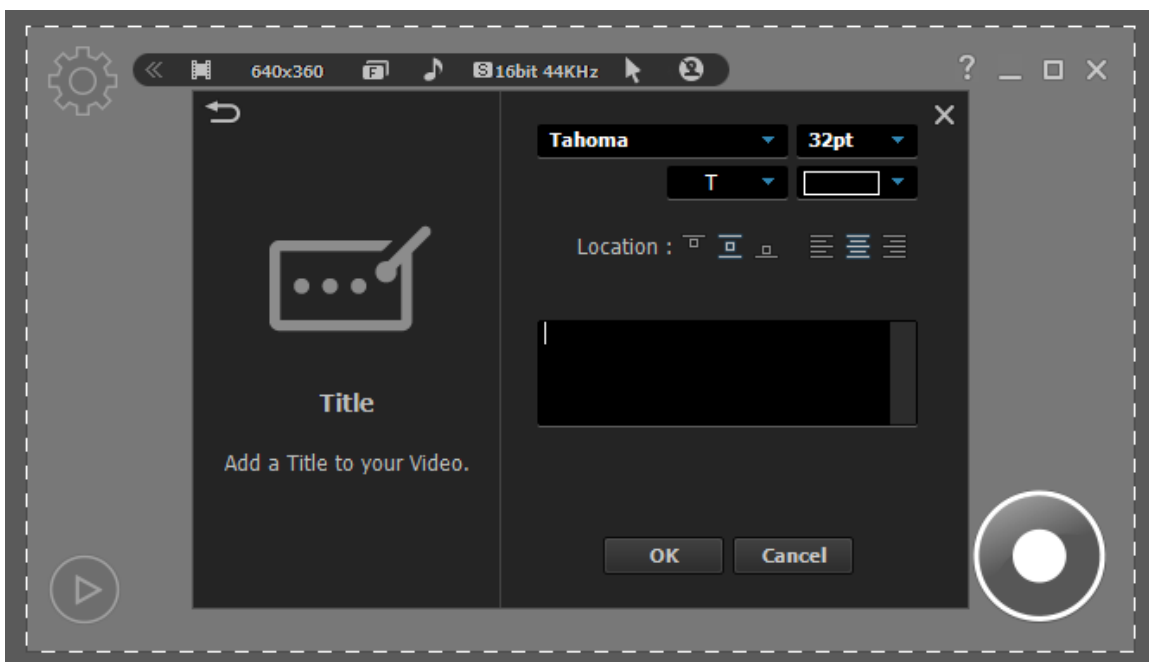
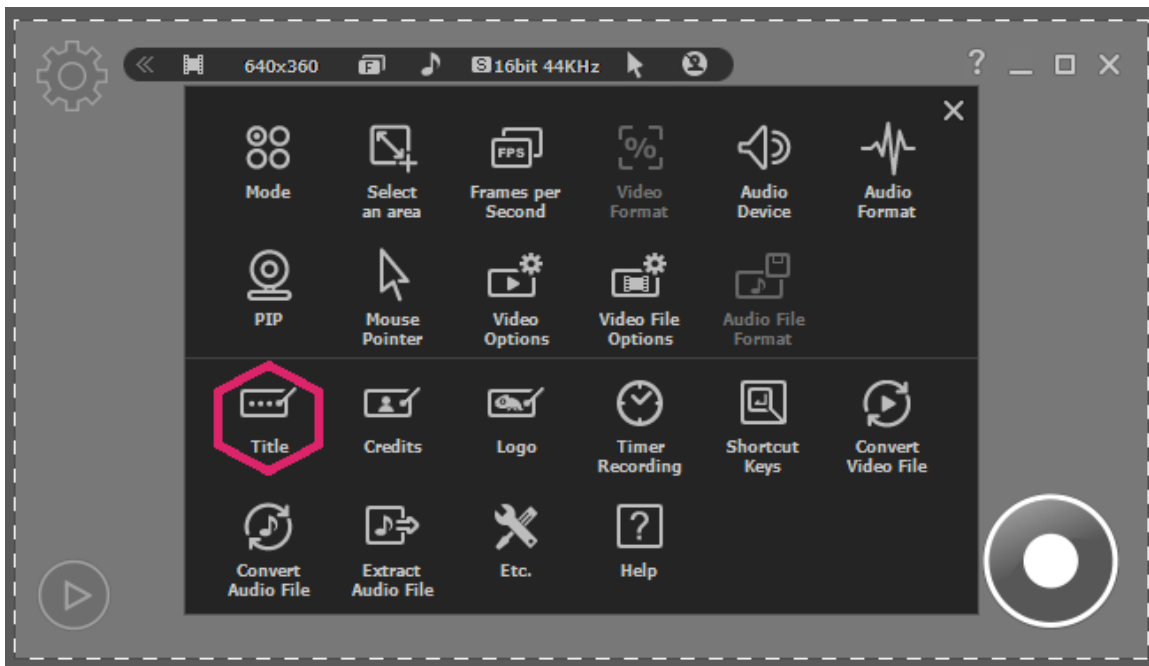
6. Advance Recording Options

A. Title

To add a title to your recording, select "Title" in the settings window.

Choose your favorite font, font size, text color, title location, and alignment to create your title.

Start liteCam Pro> Options> Title.

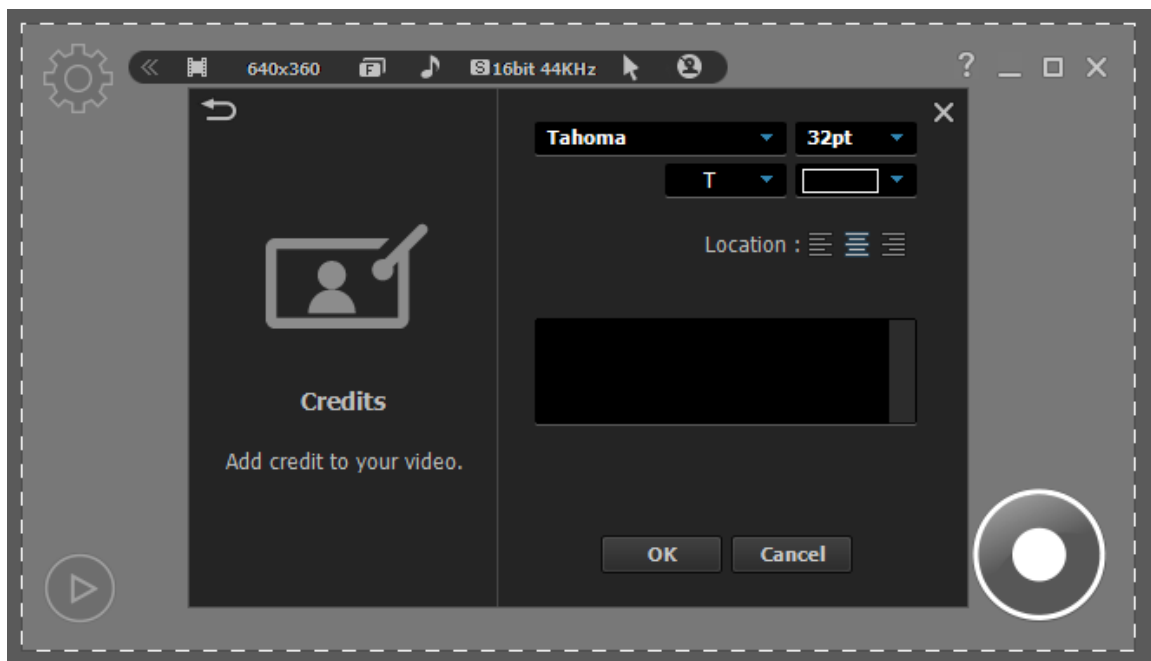
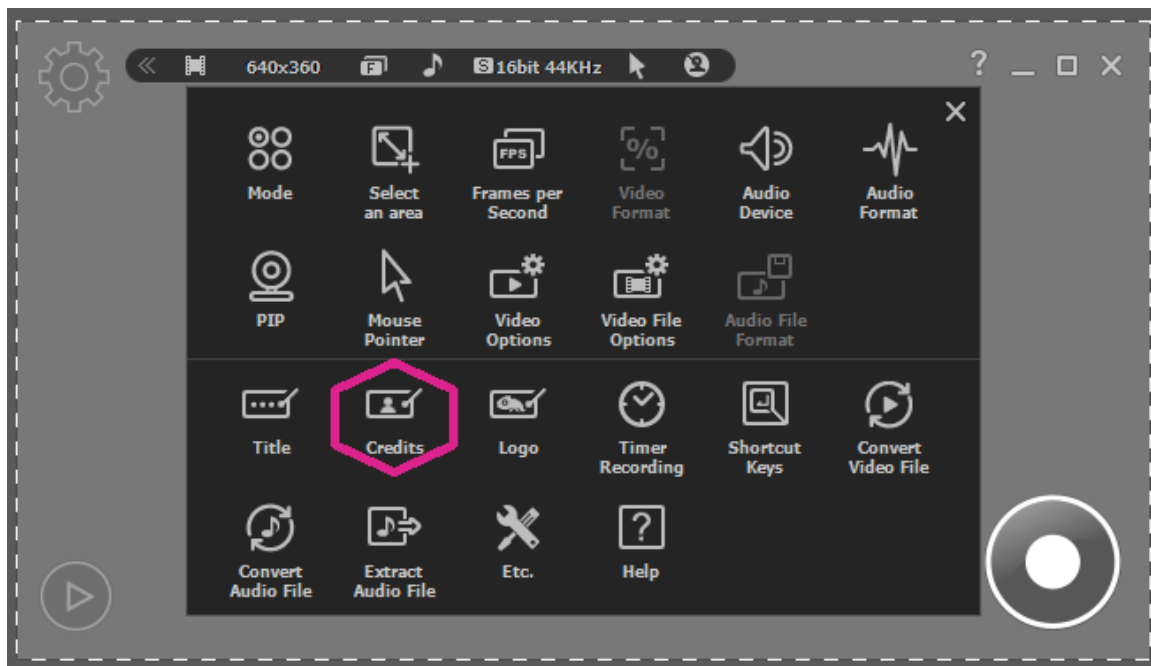


B. Credits

To add credits to the end of your recording, select "Credit" in the settings window.

Choose your favorite font, font size, text color, title location, and alignment to create your ending credits.

Start liteCam Pro > Options > Credits



C. Logo

With liteCam Pro, you can add your own logo to your recording. To add a logo to your recording, select "Logo" in the settings window and import a file to use. Next, select the transparency and location of the selected logo. You can adjust your logo with the following settings:

On/Off: toggle the switch to insert logo or to not include it.

File: import logo file.

Transparency: control the image's transparency.

Location: indicate where the image is displayed.

Start liteCam Pro > Options > Logo



D. Mouse effects

Eliminate or make your mouse pointer more visible in your recordings with Mouse Effects.

You can change your mouse pointer in various ways (shape, color, and size), or right or left-click for different mouse effects.

To show the mouse pointer effects in your recording, select "Mouse Pointer" in the settings window.

Record Mouse Pointer: include or remove the mouse pointer in your recording.

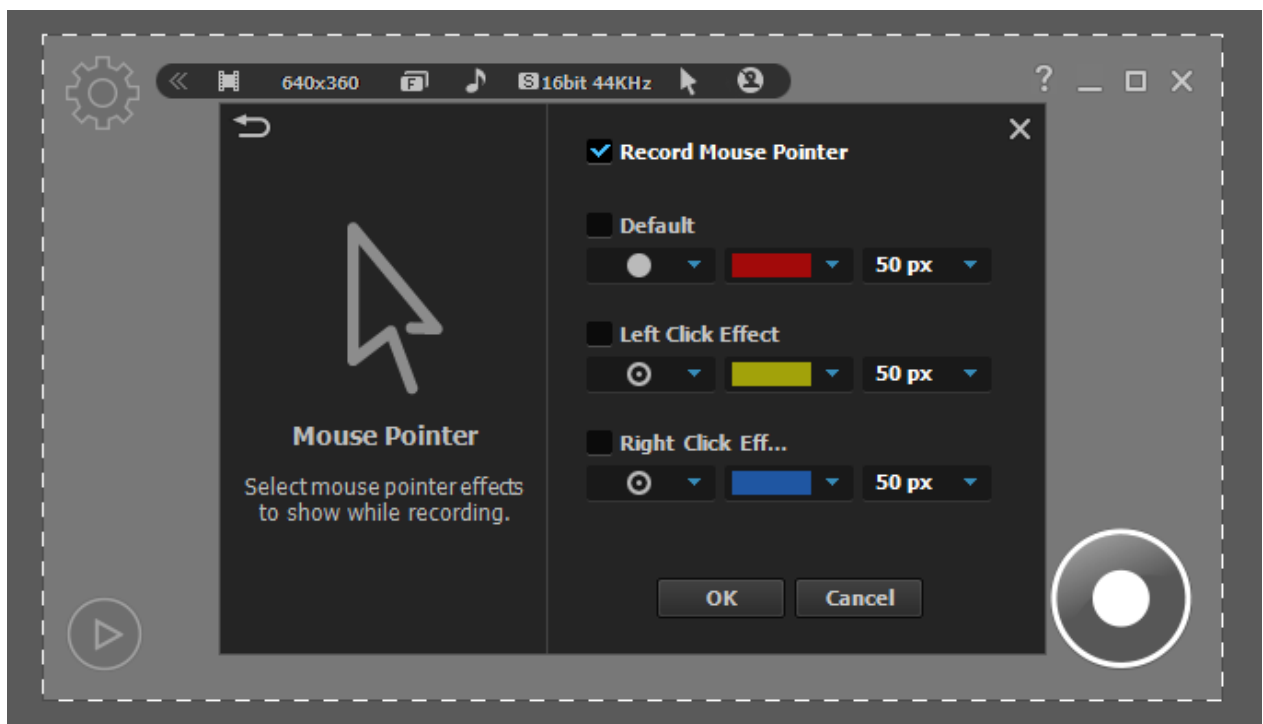
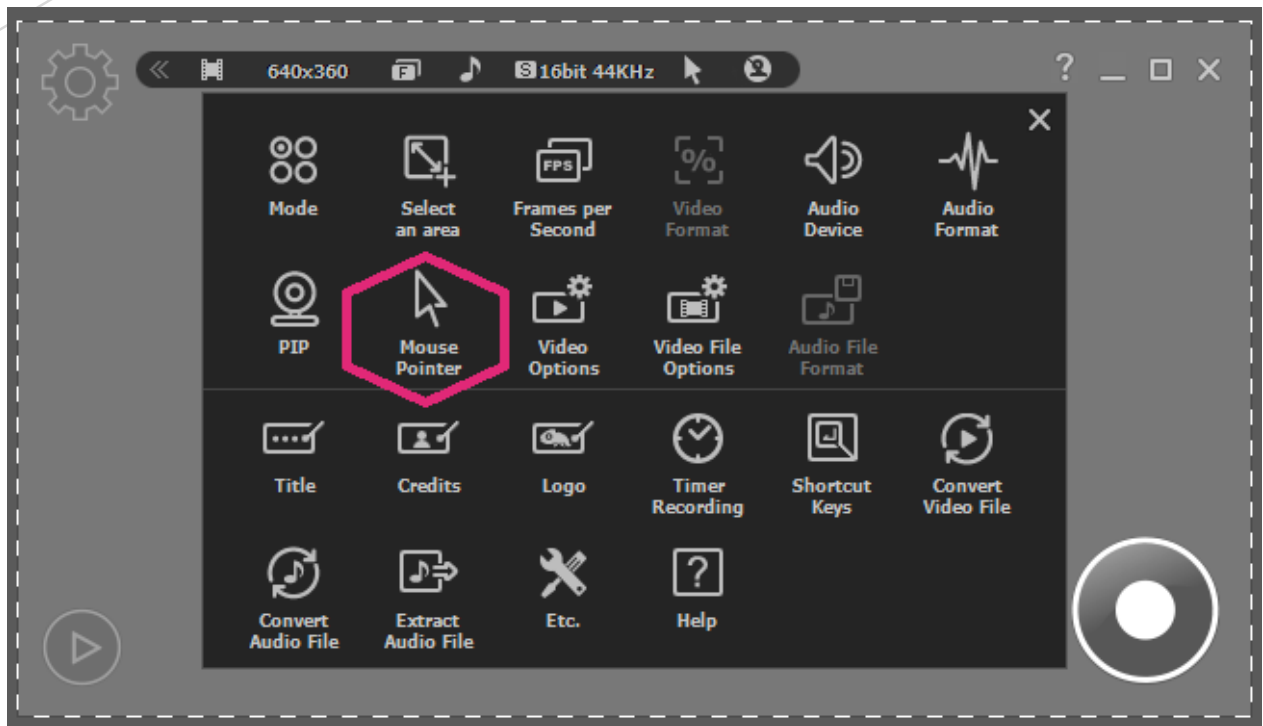
Default: add mouse pointer effects with shape, color, and size.

Left-Click Effect: add effects to the left button click.

Right-Click Effect: add effects to the right button click.

Mouse effects are only for General Recording and Video Recording Modes.

Start liteCam Pro > Options > Mouse Pointer



E. PIP

Simultaneously show your active speech in the corner of your recording with the Picture-in-Picture (PIP) function to include yourself in the video.

To record and use your webcam at the same time:

On/Off: toggle switch to activate PIP webcam recording.

Video Format: select the webcam resolution.

Webcam: Select webcam installed on your PC

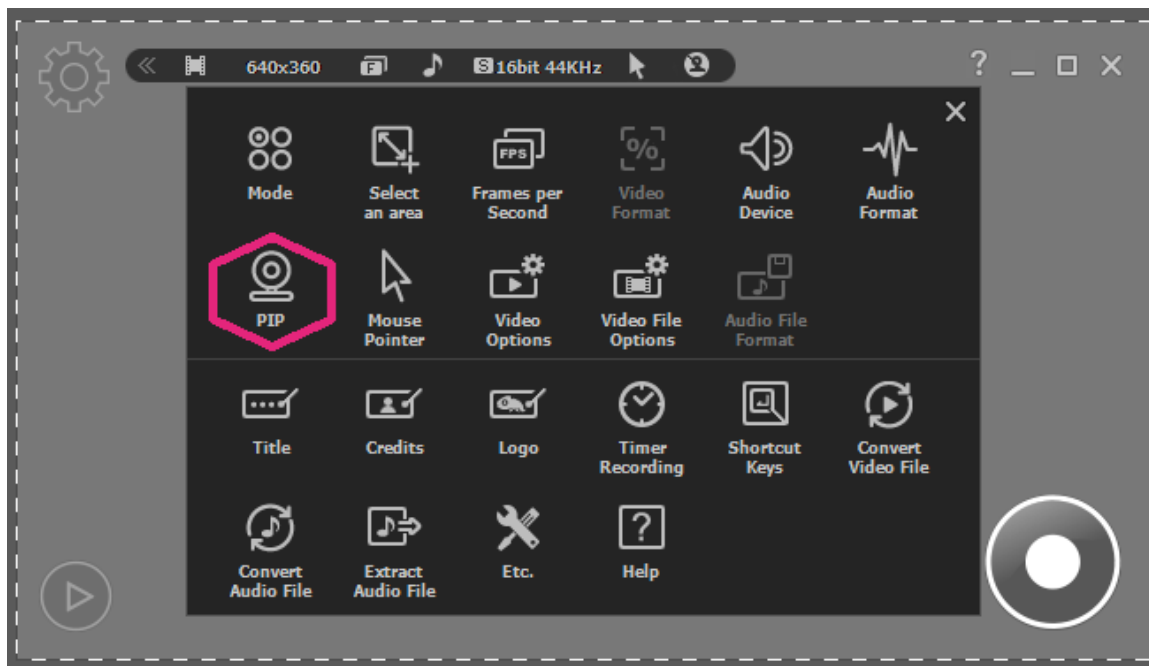
Option Button: check the webcam's property.

Location: where PIP will display in your recording.

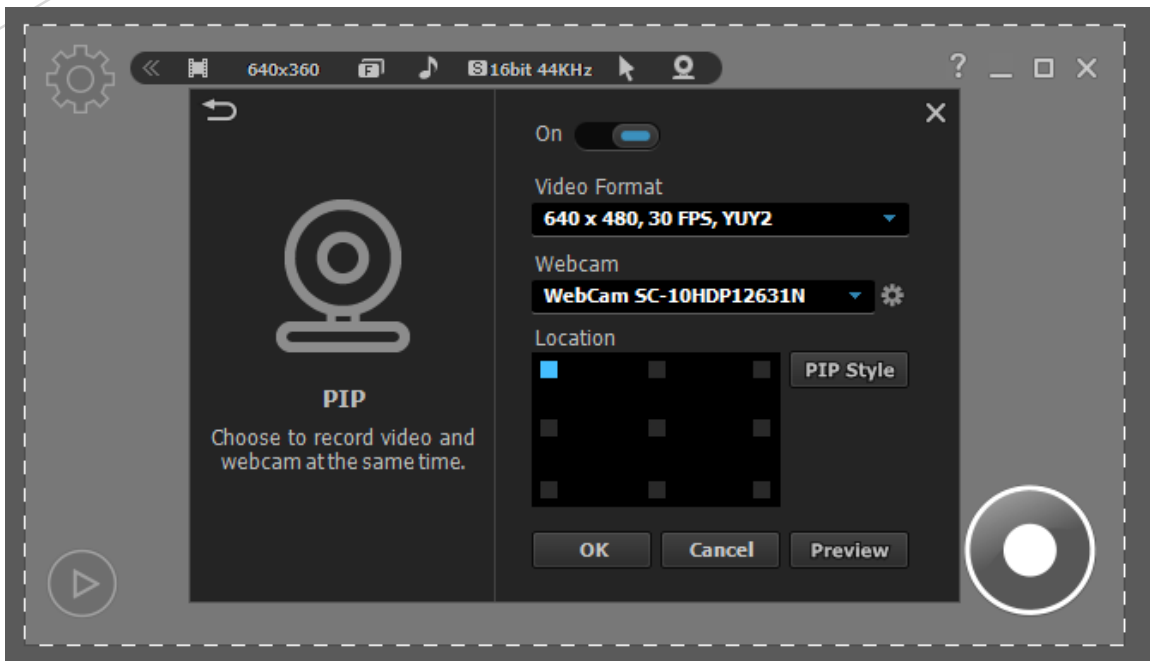
PIP Style: select the style of the PIP window.

Preview: test how PIP will appear.

Start liteCam Pro> Options> PIP



Switch "ON" to enable PIP webcam recording.

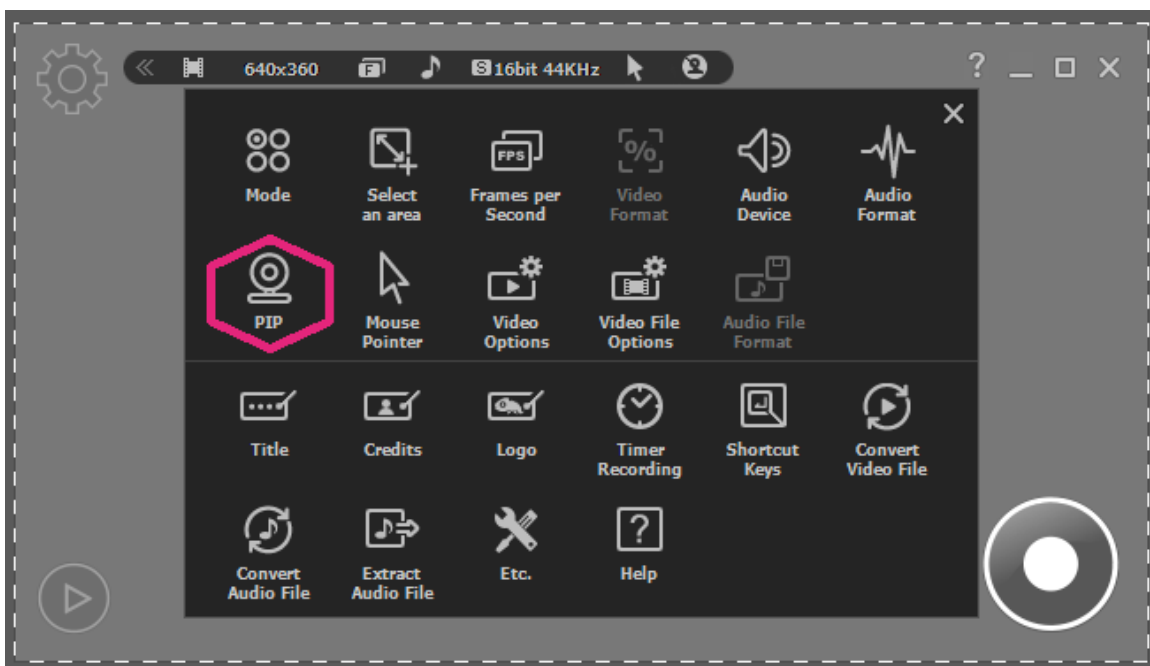


Solution for PIP interference while recording

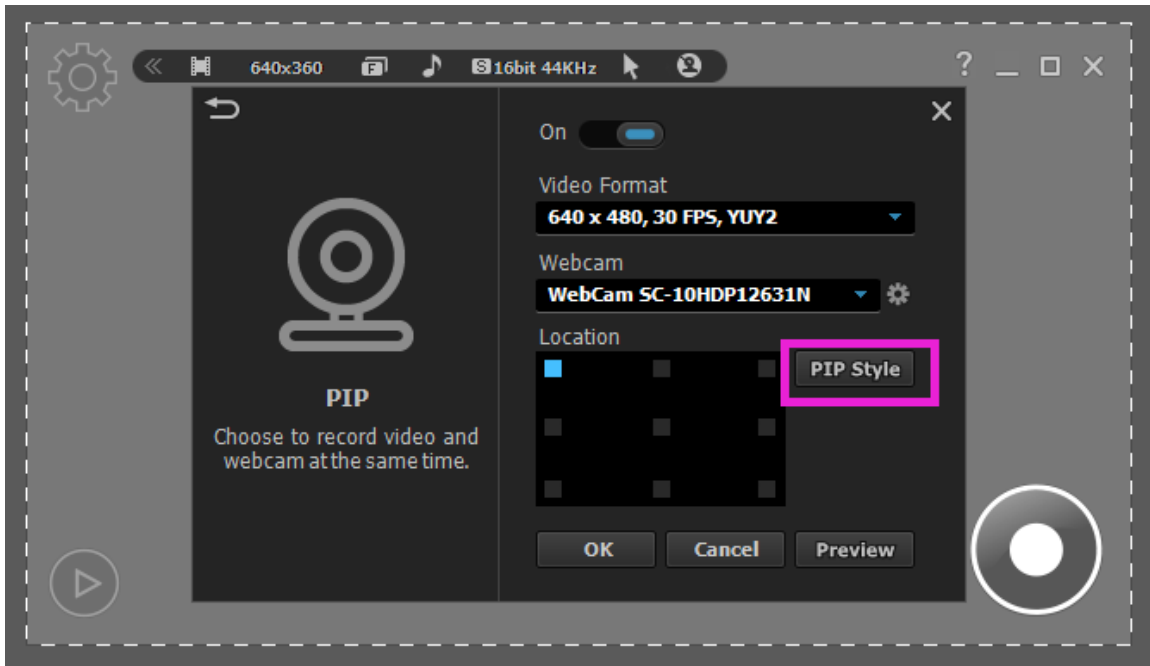
PIP window can sometimes interfere with recordings.

You can choose to either show or hide the PIP window while recording with the show/hide option. Follow the steps below.

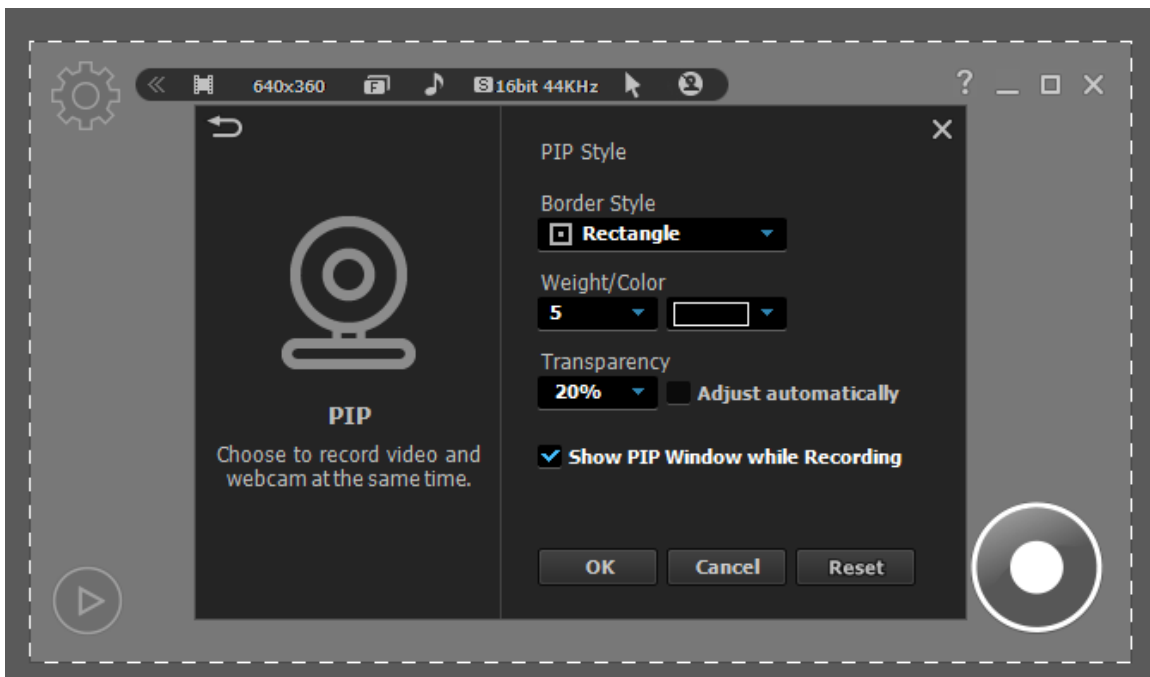
Start liteCam Pro > Options > PIP



Click on "PIP style"



Check "Show PIP Window While Recording"



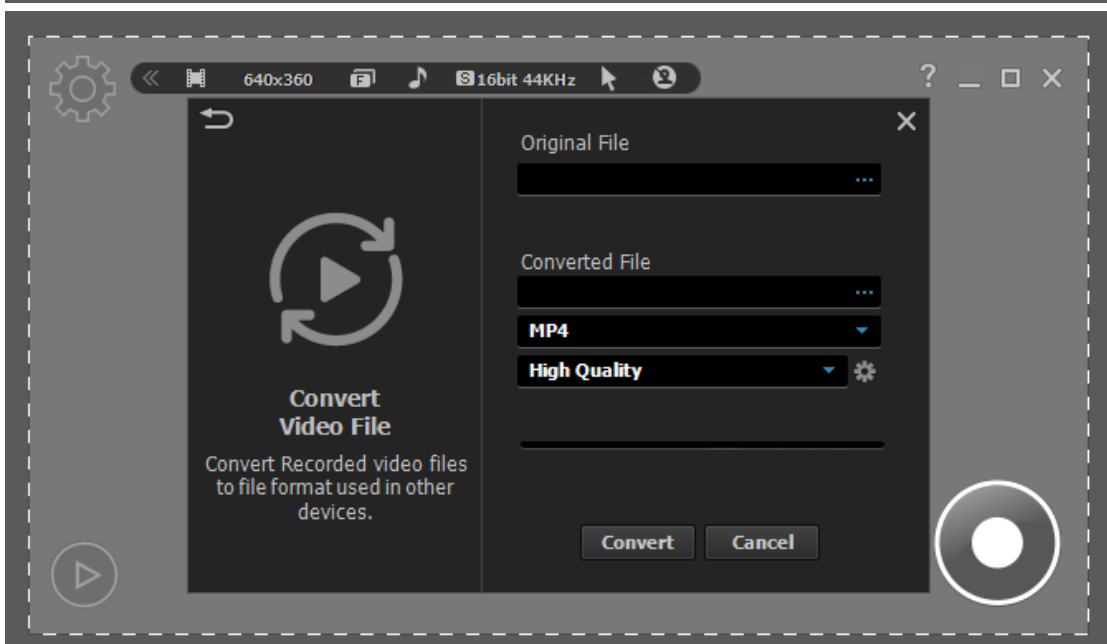
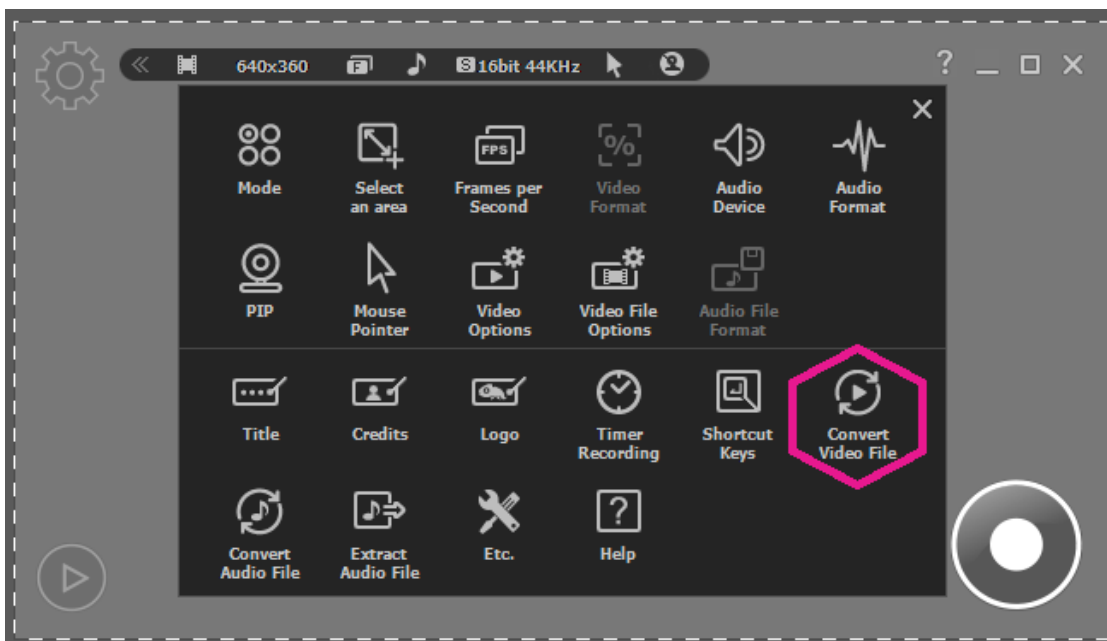
7. Converting and Extracting

All video or audio recorded using liteCam Pro can be converted into other file formats.

You can convert videos to MP4 or WMV file formats, while audio files can be converted to MP3, WAV, and WMA file formats.

A. Convert Video Files

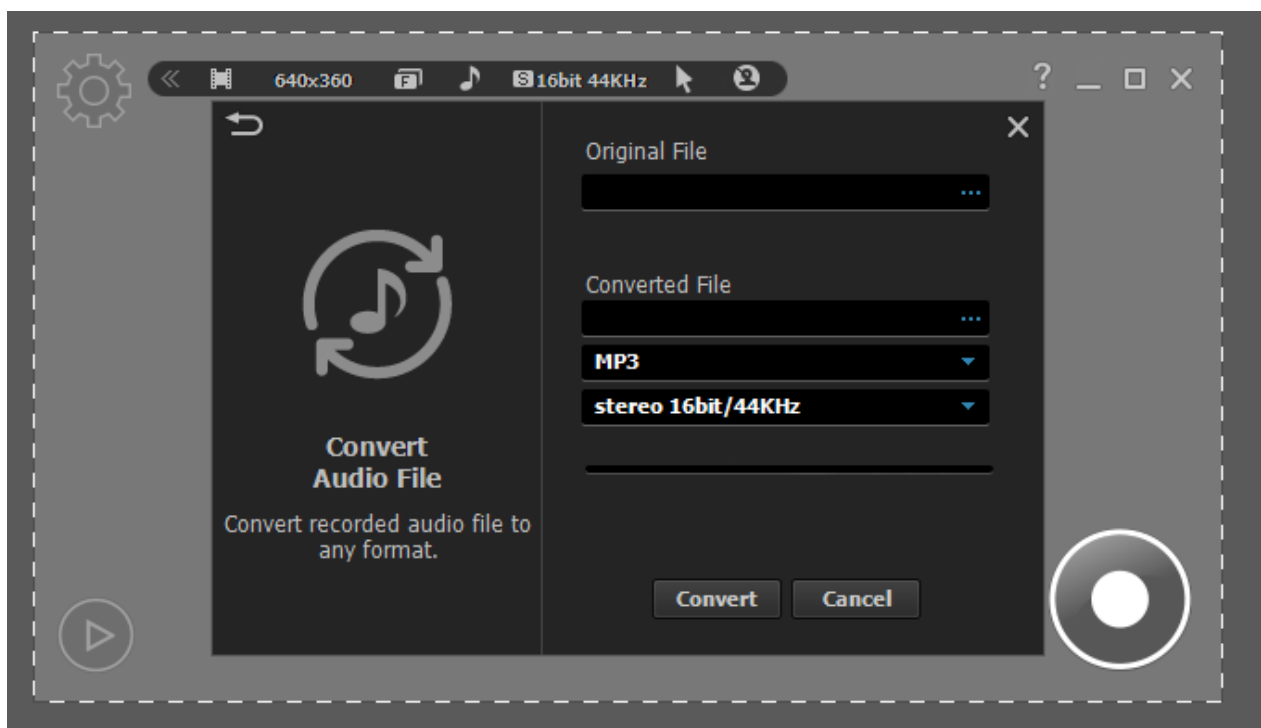
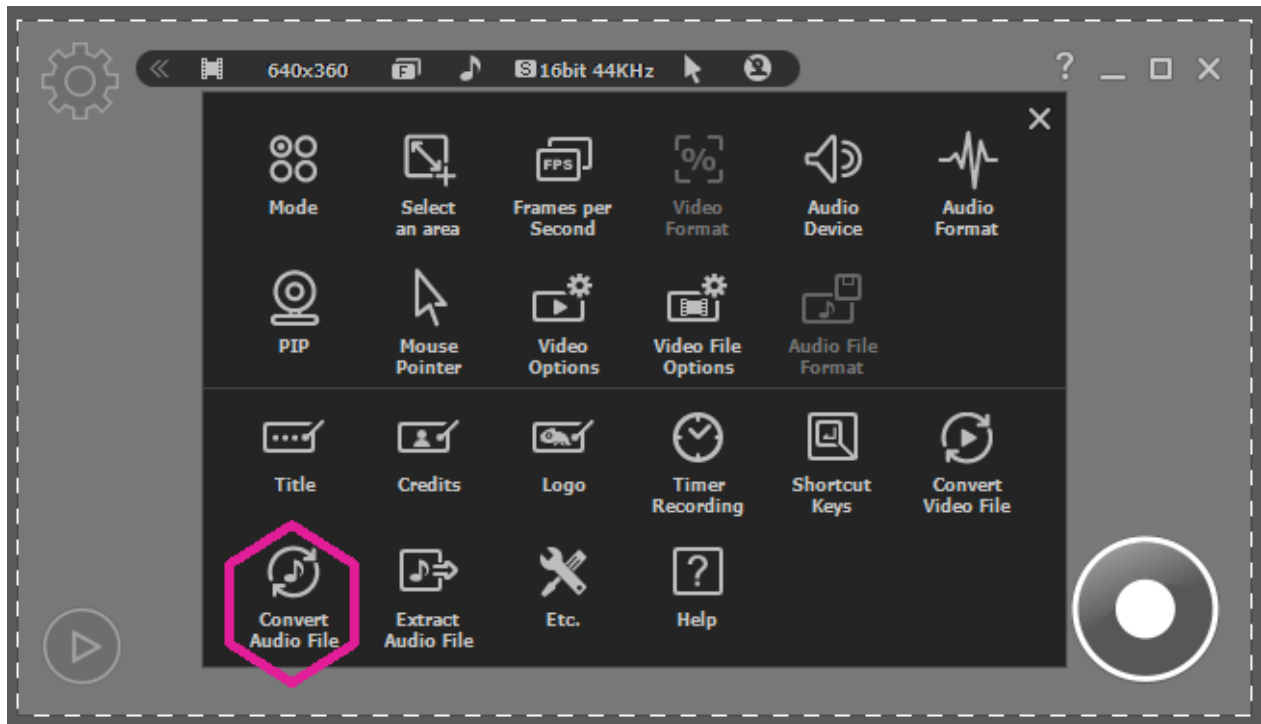
Convert the videos that you have recorded using liteCam Pro, this option can be used in General Recording and Video Recording Modes.



B. Convert Audio Files

Just like videos, recorded audio can be converted into other file formats.

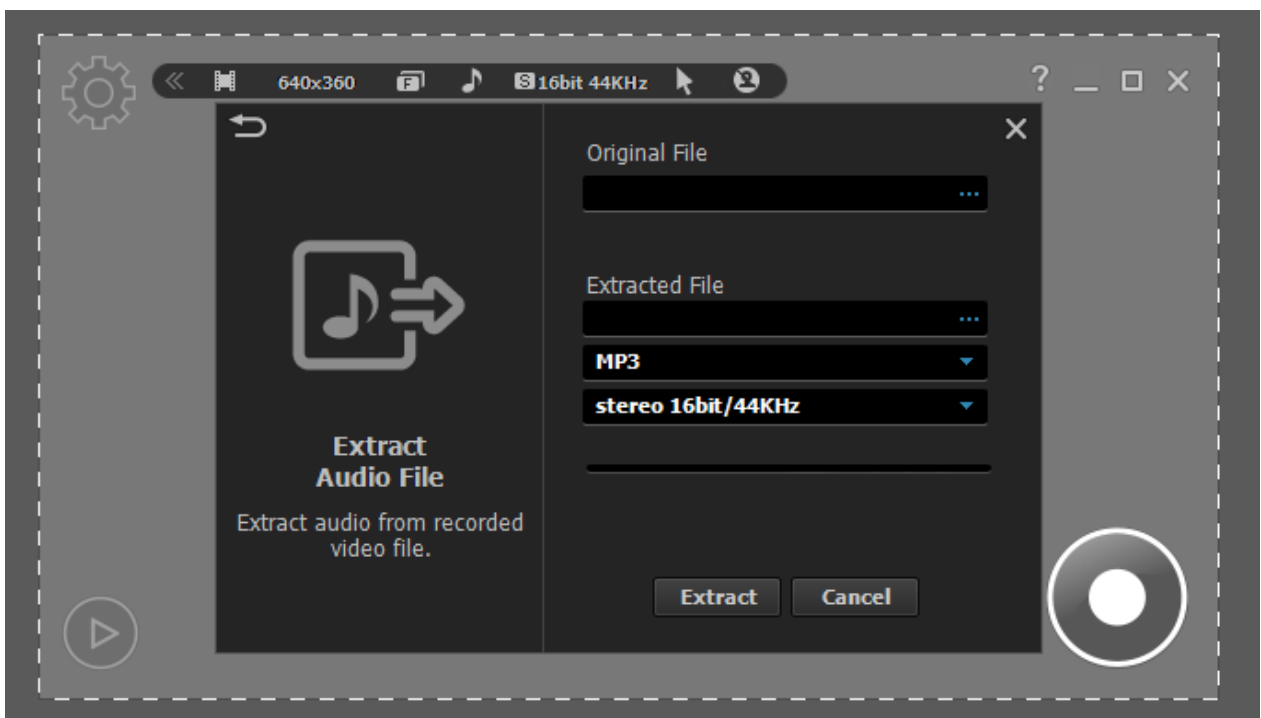
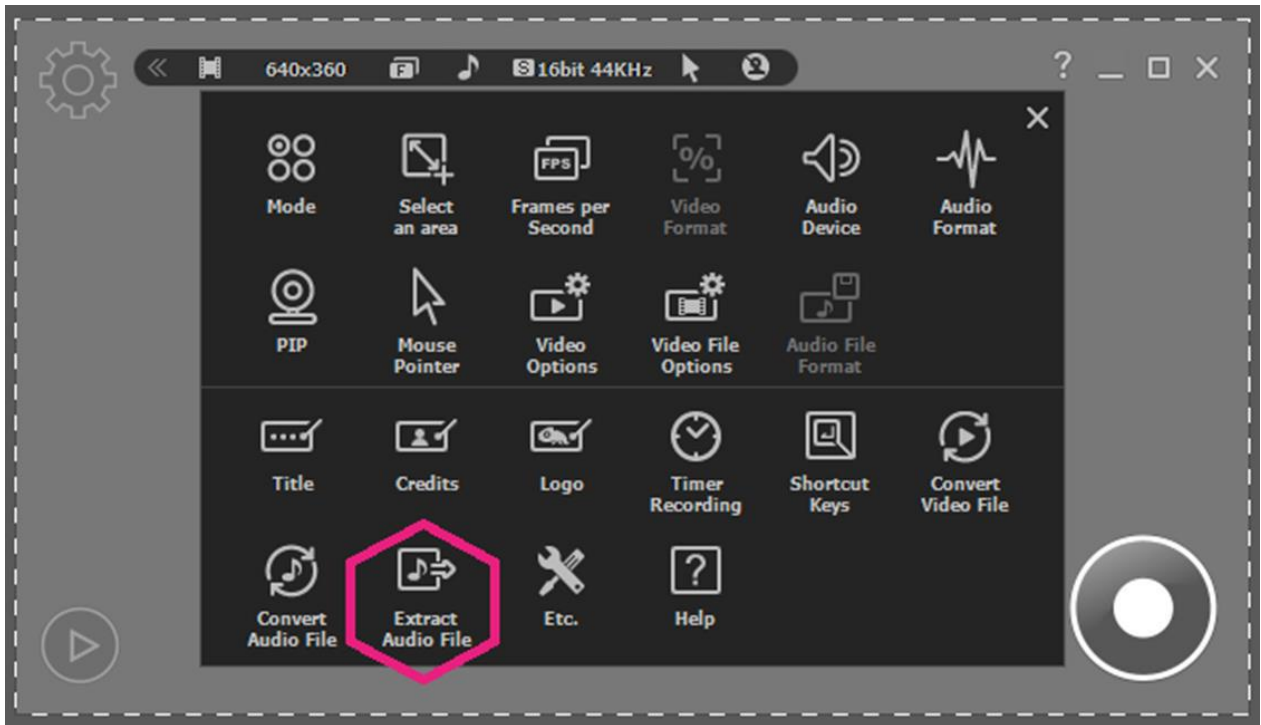
Audio files can be converted into MP3, WAV, and WMA file formats.



C. Extract Audio Files

Any audio in your recorded videos can be extracted and saved as an audio file.

To extract audio from videos: *Start liteCam Pro > Option > Extract Audio File.*



8. Other

A. Work and Log Folder

The work folder is where all recorded files are saved. The default location of this folder is C:\Users\{UserName}\Documents\liteCam.

You can have your recorded files saved to any folder in the preferences.

The Log folder is where all the logs created during recording. The default location of this folder is C:\Users\{UserName}\Documents\liteCam\Log

This folder can also be changed at any time.

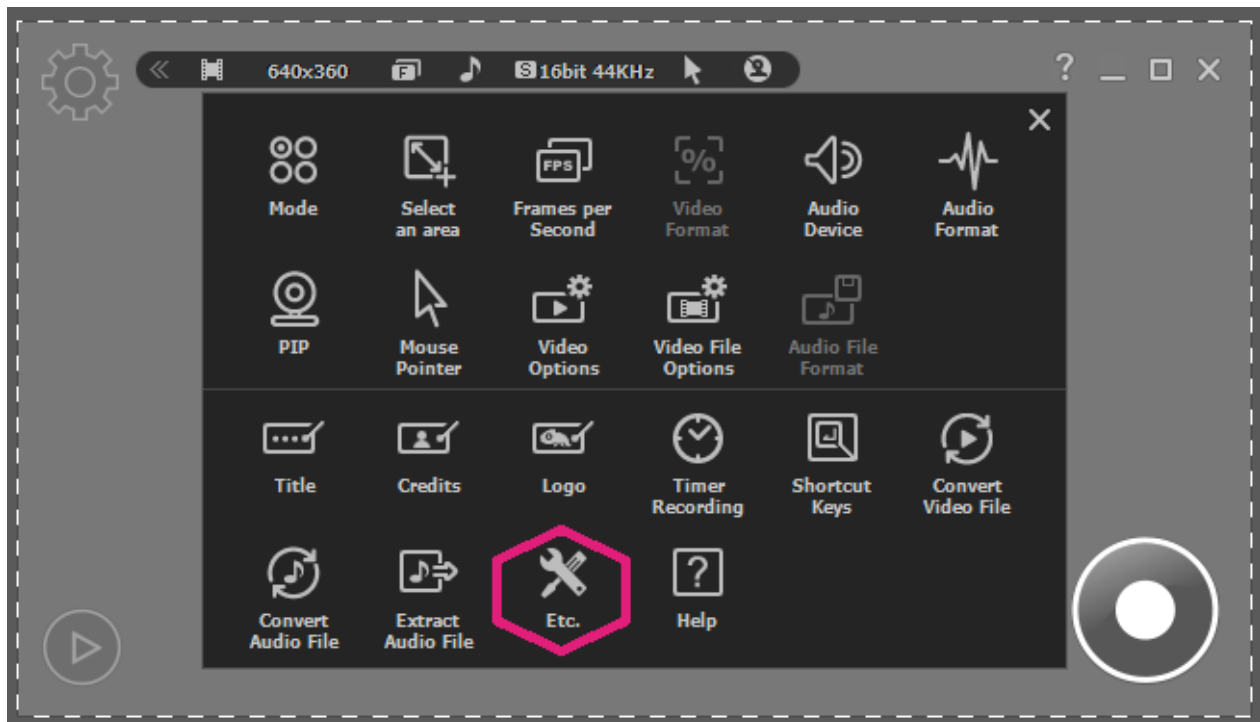
B. Options of Recording Window

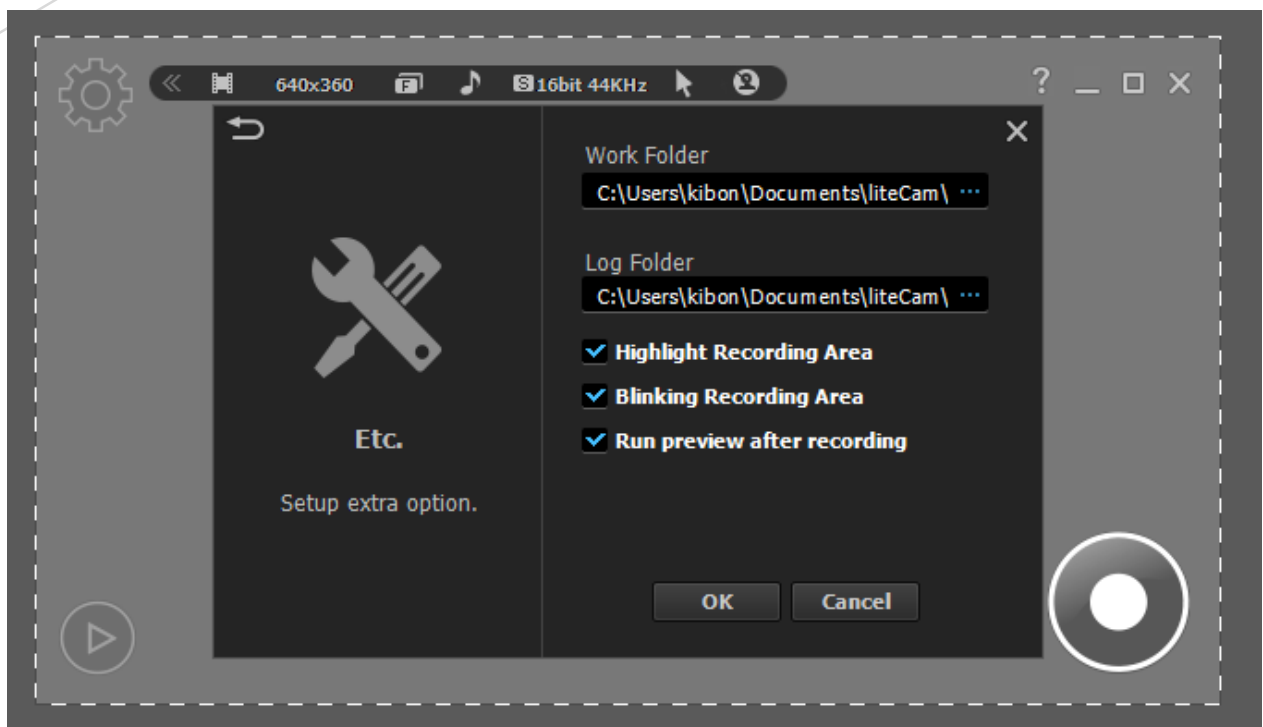
Other options for recording windows are:

Highlight Recording Area: this means that the selected area being recorded will be highlighted while recording.

Blinking Recording Area: recording area will blink while recording.

Run Preview After Recording: The preview window will open as soon the recording is completed.





9. Help

The Help window provides all information about liteCam Pro.

You will find the following in Help:

Online Guide: opens the User Manual online.

FAQ: frequently asked questions and issues.

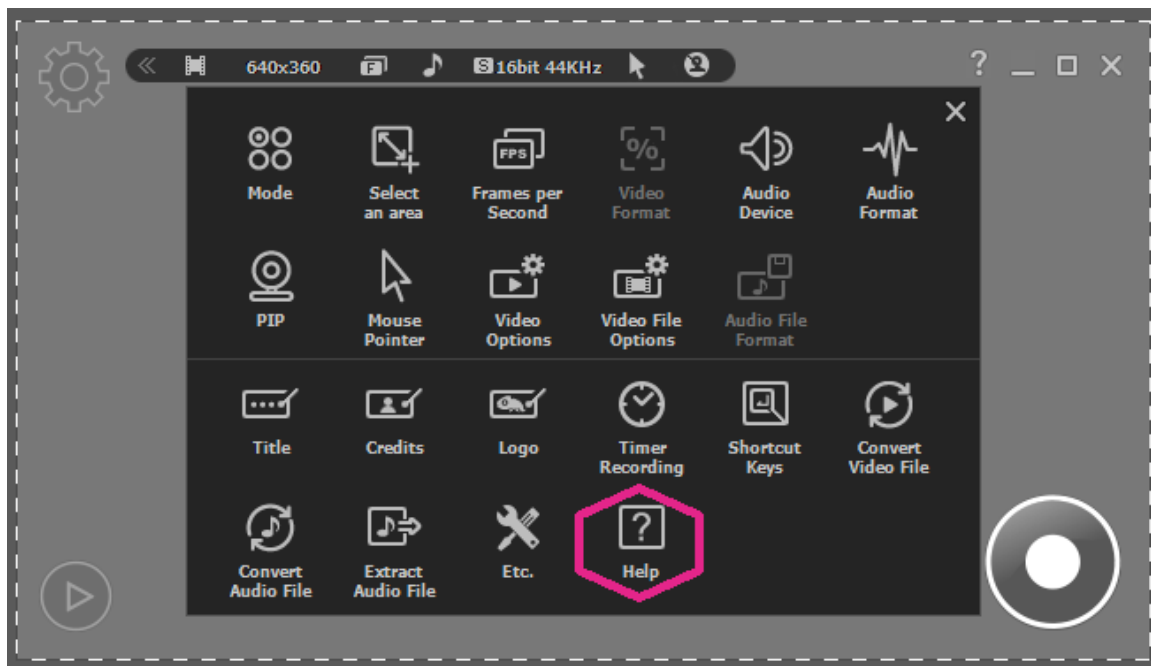
Contact us: opens to the page for reporting your problem or inquiry.

System info: your computer system information, helps if you are experiencing issues with liteCam Pro.

Auto Update: liteCam Pro will check for any available updates.

Register Product: this option is available for Demo/Trial version only. Full version can be unlocked by entering the license key via this option.

About liteCam: provides all information about liteCam Pro, including Product, Version, License type/code and more information.







For more information about RSUPPORT, please visit
<http://www.rsupport.com>

Korea :

(138-827) 서울시 송파구 위례성대로 10 (방이동 44-5) 에스타워 11~15층
전화 : +82-70-7011-3900
팩스 : +82-2-479-4429
기술문의 : support.kr@rsupport.com
구매문의 : sales.kr@rsupport.com
기타문의 : info.kr@rsupport.com

USA :

333 Sylvan Avenue Suite 110,
Englewood Cliffs, NJ 07632, USA
Phone : +1-888-348-6330
Fax : +1-888-348-6340
Tech : support.us@rsupport.com
Sales : sales.us@rsupport.com
Info : info.us@rsupport.com

Japan :

〒105-0001 東京都港区虎ノ門1-2-20
第3虎の門電気ビル
TEL : +81-3-3539-5761
FAX : +81-3-3539-5762
お問い合わせ : support.jp@rsupport.com
Sales : sales.jp@rsupport.com
Info : info.jp@rsupport.com

China :

北京市朝阳区霄云路38号现代汽车大厦2203室I-101
电话 +86-10-8256-1810
传真 +86-10-8256-2978
技术咨询 support.cn@rsupport.com
销售咨询 sales.cn@rsupport.com
其他咨询 info.cn@rsupport.com