



KONICA MINOLTA



CONNECT_

COMMUNICATE_

CONTROL_



media guide_office workgroup products v1.0



business_ by design.



This Media Guide for Office Workgroup Products v1.0 is a “living” document – this means it is continually updated. Revisions of this Media Guide for Office Workgroup Products can be located on www.mykonicaminolta.com.

This is version 1.0 – updated February 21st, 2008.

This guide is intended solely for the use and information of Konica Minolta Business Solutions U.S.A., Inc., its designated agents and their employees. The information was obtained from several different sources that are deemed reliable by all industry standards. To the best of our knowledge, this information is accurate in all respects. However, neither Konica Minolta Business Solutions U.S.A., Inc. nor any of its agents or employees shall be responsible for any inaccuracies contained herein.

© 2008 KONICA MINOLTA BUSINESS SOLUTIONS U.S.A., INC.

All rights reserved. Reproduction in whole or in part without written permission is prohibited. Konica Minolta and The essentials of imaging are trademarks of KONICA MINOLTA HOLDINGS, INC. bizhub and magicolor are trademarks of KONICA MINOLTA BUSINESS TECHNOLOGIES, INC. All other brands and product names are registered trademarks or trademarks of their respective owners.

Design & product specifications are subject to change without notice.

KONICA MINOLTA BUSINESS SOLUTIONS U.S.A., INC.

100 Williams Drive, Ramsey, NJ 07446

www.kmbs.konicaminolta.us



Table of Contents

Purpose of the Media Guide & Disclaimer	4
Paper Basis Weight	5
Paper Size Standards	6
Paper Weight Conversion Chart	10
Paper Characteristics: Grade, Grain, Finish, Whiteness, Brightness, Acidity/Alkalinity	11
General Precautions for Paper Usage & Paper Storage	14
Recommended Media & Specifications by Product:	
<u>Color MFP</u>	
bizhub C203/C253/C353/C353P	16
bizhub C451/C550/C650	21
<u>Color Printers</u>	
magicolor 24xx/25xx series printers	24
magicolor 2480MF/2590MF & bizhub C10/X	27
magicolor 4650EN/DN & bizhub C20P/X	30
magicolor 5550/5570 & bizhub C30P/X	32
magicolor 7450	36
magicolor 8650DN	40
<u>Monochrome MFP</u>	
bizhub 360/420/500	46
bizhub 600/750	48
<u>Monochrome Printers</u>	
PagePro 1380MF/1390MF	50
pagepro 4650EN/5650EN & bizhub 40P/X	51
PagePro 9100N	53
Media Testing and Support	54
References	55

Media Guide: Office Workgroup Products v1.0

Purpose of the Media Guide

The purpose of this media guide is to educate our customers on basic paper characteristics, paper handling, general precautions, and proper storage as related to our MFP and printer products. Use this media guide to help select the best media appropriate for your general office use, marketing brochure or collateral, booklet, or any other graphic art output.

We also offer recommended media by product that can be ordered directly from Konica Minolta to ensure high quality printing and desired machine performance. Not all media recommended within this guide can be ordered directly through Konica Minolta, you must contact the manufacturer to purchase the media.

Disclaimer

As an aid to end-users of Konica Minolta MFP and printer products, Konica Minolta Business Solutions U.S.A. Inc. (KMBS) has performed testing on certain media that may be printed by Konica Minolta's products. Based solely on such testing, KMBS has found that the products listed have functioned properly using the media listed during the course of testing. However, KMBS can give no assurances based upon such testing that the listed media will perform for any particular end-user's product, and KMBS disclaims any warranty, express or implied, to such effect.

KMBS recommends that each end user consult with its servicing dealer both to confirm that use of any listed media with the end user's product will not affect any servicing agreement with such dealer, and that the product is maintained in the appropriate environmental and other conditions stated in the product's operator's manual so as to optimize the possibility for replicating the results achieved in KMBS testing. This guide does not constitute an endorsement of the listed media, and there may be other media that enable the listed products to function properly.

Please note that the print media listed has been tested and approved for use in MFP and printers sold in the Americas only. Using certain media may affect fuser yield life.

For complete overview on product usage, please refer to the product's user manual.

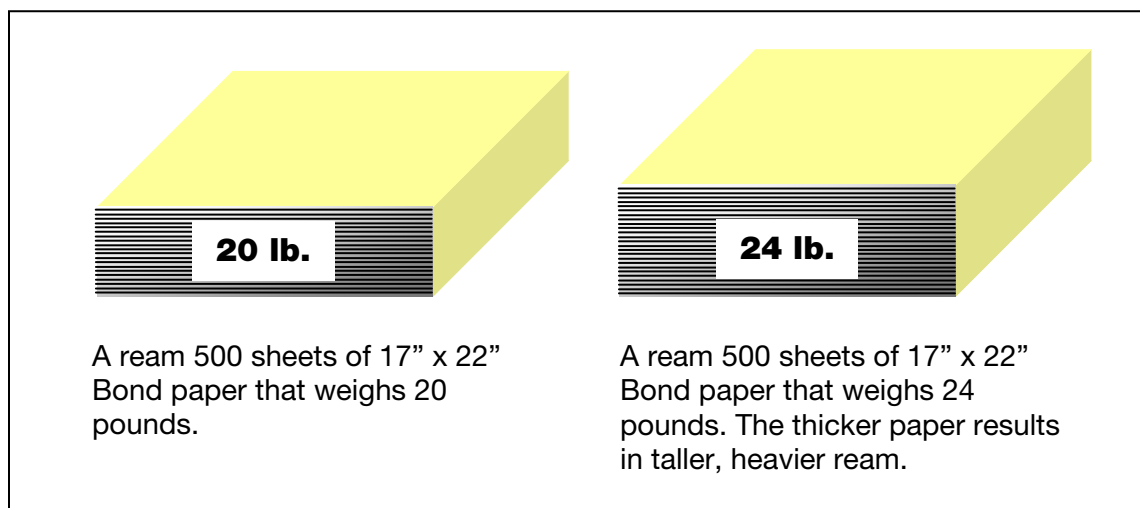


Paper Basis Weight

The basis weight refers to the weight in pounds of 500 sheets of paper when it has been cut to that paper's standard basic size. For example the basic size for Bond paper is 17 x 22 inches. If 500 sheets (a ream) of Bond is cut to its basic size of 17 x 22 inches and weighs 20 pounds, it is classified as 20 lb. bond. If a 17 x 22" ream of Bond paper weighed 24 pounds it would be called 24 lb. Bond, and so on. The chart below contains some common paper types and their basic size.

Paper Type	Basic Size
Bond	17" x 22"
Ledger	17" x 22"
Offset	25" x 38"
Book	25" x 38"
Cover	20" x 26"
Index Bristol	25-1/2" x 30-1/2"
Vellum Bristol	22-1/2" x 28-1/2"
Printing Bristol	22-1/2" x 28-1/2"
Tag / Newsprint	24" x 36"

Paper Ream Comparison

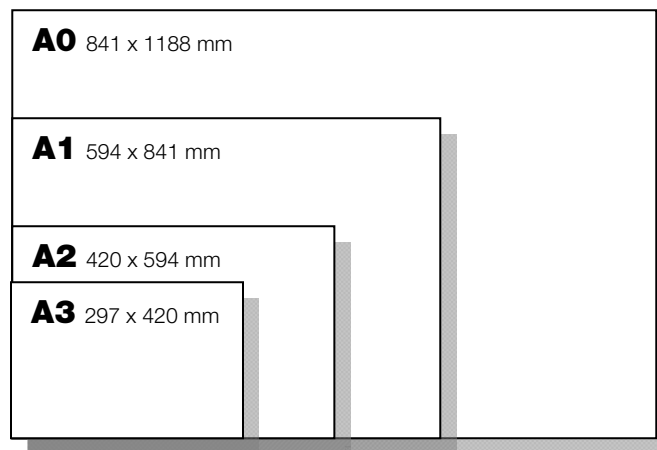


Paper Size Standards

ISO Size Standards

The International Organization for Standardization (ISO) has established standards for paper sizes based on the metric system (millimeters). The standards have been grouped into three different series of requirements: "A-series", for general printing, "B-series", for posters, and "C-series", for envelopes, postcards, and folders. The "A" series is the most commonly used with sizes ranging from A0, which is the largest, down to A8.

The A-series sizes are all represented as a part of the area of one square meter with a length to width ratio of 1.414. The size A0 is equivalent to the area of a square meter with each smaller size being 50% of the size of the preceding one. A1 is 50% of the area of A0, A2 is 50% of A1, and so on. Another way to look at it is that when an A0 sheet is cut in half, two A1 sheets are produced, and when an A1 sheet is cut in half, two A2 sheets are produced. Some of the sizes for the A-series are shown in the illustration below.



Sheets Sizes based on ISO Standards

In the metric system, paper is based on the weight of 500 sheets of paper that measures one square meter. This measurement is known as g/m^2 or grams per square meter.



Paper Size Standards

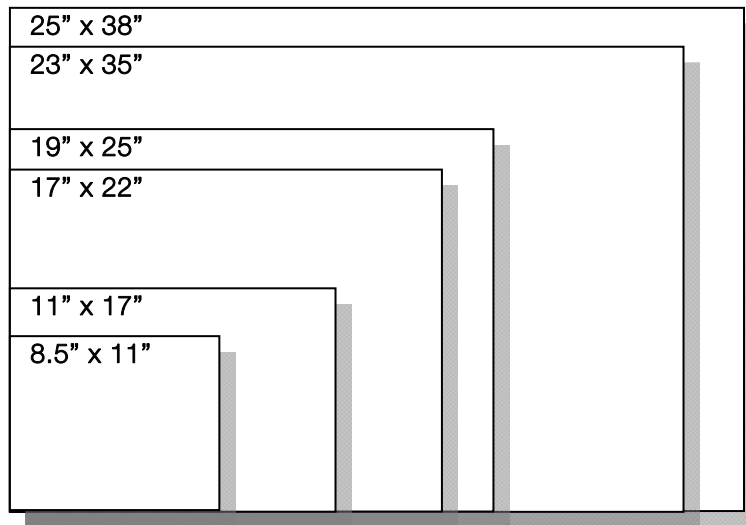
ISO Paper Sizes Chart

	millimeters			inches		
A0	841	x	1189	33.11	x	46.81
A1	594	x	841	23.39	x	33.11
A2	420	x	594	16.54	x	23.39
A3	297	x	420	11.69	x	16.54
A4	210	x	297	8.27	x	11.69
A5	148	x	210	5.83	x	8.27
A6 (postcard)	105	x	148	4.13	x	5.83
A7	74	x	105	2.91	x	4.13
A8	52	x	74	2.05	x	2.91
A9	37	x	52	1.46	x	2.05
A10	26	x	37	1.02	x	1.46
B0	1000	x	1414	39.37	x	55.67
B1	707	x	1000	27.83	x	39.37
B2	500	x	707	19.69	x	27.83
B3	353	x	500	13.9	x	19.69
B4	250	x	353	9.84	x	13.9
B5	176	x	250	6.93	x	9.84
B6	125	x	176	4.92	x	6.93
B7	88	x	125	3.46	x	4.92
B8	62	x	88	2.44	x	3.46
B9	44	x	62	1.73	x	2.44
B10	31	x	44	1.22	x	1.73
C0	917	x	1297	36.1	x	51.06
C1	648	x	917	25.51	x	36.1
C2	458	x	648	18.03	x	25.51
C3	324	x	458	12.76	x	18.03
C4 (envelope)	229	x	324	9.02	x	12.76
C5 (envelope)	162	x	229	6.38	x	9.02
C6 (envelope)	114	x	162	4.49	x	6.38
C7	81	x	114	3.19	x	4.49
C8	57	x	81	2.24	x	3.19
C9	40	x	57	1.57	x	2.24
C10	28	x	40	1.1	x	1.57

Paper Size Standards

North American Size Standards

Although the ISO size standards are common in many parts of the world where the metric system is the established standard for measurement, North American sheet sizes are based on inches and are shown in the illustration below.



Sheets Sizes based on North American Standards

Some paper manufacturers specify their paper on a thousand-sheet basis. The label may state something like "25 x 38 - 140M". This refers to book grade paper (based on basis size), weight of 140 pounds with the "M" standing for 1000 sheets. Since we commonly refer to paper based on basis weight of 500 sheets, this would equate to 70 lb. book stock. The 140M is 140 pounds for 1,000 sheets - divide by 2 and you have 70 lb. for 500 sheets.

Paper with specifications similar to "24/60 lb. (90 g/m²)" refers to a 24 lb. bond or 60 lb. book grade paper. Refer the paper weight conversion chart on page 10.



Paper Size Standards

Common Paper Sizes in North America

Domestic	inches		
Special	11.7	x	19.5
Universal	11.69	x	17.69
Ledger, B, Double	11	x	17
Legal	8.5	x	14
Small Legal	8.5	x	13
Letter, A	8.5	x	11
Folio	8.28	x	13
Commercial	8.28	x	10.63
Foolscap	8	x	13
Quarto	8	x	10
Executive	7.25	x	10.5
Statement, Half	5.5	x	8.5

Envelopes	inches		
COM 9	3.88	x	8.88
COM10	4.13	x	9.5
COM 11	4.5	x	10.39
COM 12	4.75	x	11
Monarch E	3.88	x	7.5
DL	4.33	x	8.67
C5	6.38	x	9.02

Media Guide: Office Workgroup Products v1.0

Paper Weight Conversion Chart

g/m² (one square meter)	Bond (17" x 22")	Cover (20" x 26")	Bristol (22.5" x 28.5")	Index (25.5" x 30.5")	Book (25" x 38")
44	12	16	20	24	30
49	13	18	22	27	33
59	16	22	27	33	40
60	16	22	27	33	41
61	16	23	28	34	41
67	18	25	31	37	45
74	20	27	34	41	50
75	20	28	34	41	51
81	22	30	37	45	55
89	24	33	41	49	60
90	24	33	41	50	61
96	26	36	44	53	65
104	28	38	47	58	70
105	28	39	48	58	71
111	30	41	51	61	75
118	31	44	54	65	80
120	32	44	55	66	81
125	33	46	57	69	85
133	35	49	61	74	90
135	36	50	62	75	91
147	39	54	67	81	99
148	39	55	67	82	100
149	40	55	68	82	101
150	40	56	68	83	101
158	42	58	72	87	107
162	43	60	74	90	110
163	43	60	74	90	110
169	45	63	77	93	114
175	47	65	80	97	118
176	47	65	80	97	119
178	47	66	81	98	120
199	53	74	91	110	135
203	54	75	93	112	137
216	57	80	98	119	146
219	58	81	100	121	148
243	65	90	111	134	164
244	65	90	111	135	165
252	67	93	115	139	170
253	67	94	115	140	171
261	69	97	119	144	176
263	70	97	120	145	178
270	72	100	123	149	183
271	72	100	124	150	183
284	76	105	130	157	192
306	81	113	140	169	207
307	82	114	140	170	208
326	87	121	149	180	220
328	87	121	150	181	222
351	93	130	160	194	237

Items highlighted are industry standard basis weights.



Paper Characteristics

Paper Grades

Paper grade define the use of the paper, and usually its purpose is suggested by its name. The most common grades are outlined below.

Bond

This is the most common type of paper used in a business environment. Bond papers are used for standard forms and business letters. Bond paper readily accepts ink from laser printers, inkjets, typewriters and writing pens.

Cover

As the name implies, this grade of paper is generally used for making covers for booklets. Cover stock can be purchased as coated and non-coated, textured and with finishes range from antique to smooth.

Bristol

Bristol is considered a board grade. It's very receptive to inks, has good snap and resilience - in other words - stiff.

Index

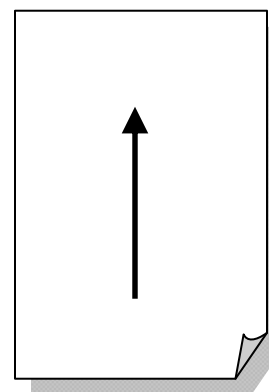
Index is commonly used as a cheap substitute to a good quality stiff paper, and is available in smooth and vellum finishes.

Book

As implied by its name, this grade of paper is used for textbooks as well as general printing.

Paper Grain

The grain of the paper refers to the direction of the fibers in a sheet of paper. Long grain paper refers to paper in which the fibers run in the same direction as the longest measurement of the paper. Short grain paper refers to paper in which the fibers run in the same direction as the shortest measurement of the paper. When paper is torn, it will tear easier and straighter when torn parallel with the grain. It will also fold easier parallel to the grain and produce a cleaner fold than if folded across the grain. Laser printers require long grain paper for the best results. Short grain paper may not feed properly into a laser printer and the heat produced by a laser printer may result in the sheets curling as they come out of the printer.



Long grain direction on an 8.5" x 11" sheet

Paper Characteristics

Paper Finish

The finish refers to the surface characteristics of the paper such as how the paper feels...is it smooth such as glossy cover or rough with an antique finish? Does the paper have a shiny appearance such as coated glossy papers or is it dull like bond paper. Does the paper enhance the look of the printed piece similar to watermarked paper or is it purely functional like newsprint?

Finishes can be applied to paper during the manufacturing process or produced offline. A finish such as Laid can be created while it is being manufactured with the use of a marking roller that forms the pattern in the paper while it is still wet. Not all of these finished types of media are commonly imaged through MFP and printers. Typically Gloss or Matte finished media are imaged on MFP and printers.

- **Cockle** - A cockle finish simulates characteristics of hand made paper with a wavy, rippled, puckered finish. The effect is obtained by air drying the paper under minimum tension.
- **Felt** - Felt is a soft texture on uncoated paper that is created during the papermaking process with a either felt covered roller or with a rubber roller with a felt pattern that creates the finish. It can also be accomplished as an offline process. The felt finish does not affect the strength of the paper.
- **Gloss** - A gloss finish produces a shiny and reflective surface on one or both sides of certain coated papers. A higher gloss is usually seen on higher quality coated papers. The gloss finish is produced from compounds added during the paper making process.
- **Laid** - A laid finish has the appearance of translucent lines running horizontally and vertically in the paper. It is produced during the papermaking process with a special roller that creates the pattern in the wet paper.
- **Linen** - Linen finished paper resembles linen cloth and is usually produced after the papermaking process as an offline embossing process.
- **Matte** - A finish on certain coated papers that is smooth but gives a dull appearance. A matte finish, as well as other types of coated paper, are good choices for print jobs in which high quality is required.
- **Parchment** - A paper finish that has an old or antique appearance and is the result of washing sulfuric acid over the paper and then quickly neutralizing the acid wash. This process melts the outer paper fibers which fill the voids in the rest of the paper. Parchment is very durable and grease resistant.
- **Smooth** - A smooth finish is the result of the paper passing through sets of rollers during the papermaking process. This process is known as calendering.
- **Vellum** - A vellum finish has an eggshell appearance and is consistent and even but not as much as a smooth finish. Vellum is one of the most popular uncoated finishes and paper with this finish has a high ink absorbency rate.
- **Wove** - An even finish in uncoated paper with a slight texture made by a felt roller covered in woven wire.



Paper Characteristics

Whiteness

The whiteness of paper is the measure of its ability to reflect the colors of light equally. The more evenly a paper reflects all colors of the spectrum, the whiter the sheet. Some papers may reflect slightly cool colors back to our eyes and give the illusion that the sheet is actually brighter than white paper. If white paper has a slight warm appearance it will not appear as bright as a sheet that reflects a cool color, however warm colors printed on a warm sheet will appear stronger than when printed on a cool sheet. Cool colors printed on a cool white sheet are also enhanced in the same way. There is no such thing as a pure white sheet of paper, since the white that we see is always influenced by the lighting of our environment and the reflections from surrounding objects.

Brightness

Brightness refers to the percent of light reflected back from a sheet of paper as measured by a light meter reading. Contrast is reduced and highlights are not as strong when paper with a lower brightness is used for a printed piece. The quality and brightness of paper is organized into six categories:

Paper Brightness	
Premium	88.0 to 95.0 Brightness
Number 1	85.0 to 87.9 Brightness
Number 2	83.0 to 84.9 Brightness
Number 3	79.0 to 82.9 Brightness
Number 4	73.0 to 78.9 Brightness
Number 5	72.9 and below

Acidity/Alkalinity

The pH (potential for Hydrogen) measurement of paper determines the degree of acidity and alkalinity in the stock. The pH scale has readings of 0 to 14 with 7 being neutral. Readings below a pH of 7.0 are acidic and above are alkaline. Each single digit actually equals a measure of 10, so a stock measuring 4.0 pH is 20 times more acidic than one measuring 6.0 pH. Paper can have an acid base, an alkaline base or it can be neutral with a pH of 7. Most paper manufactured in the 20th century was of an acid base. Acidic papers deteriorate in a relatively short period of time, and should never be used for printed items that are intended to last for many years. Since the 1970's, most of the paper used for book publishing and other printed materials where permanence is of importance, has been alkaline paper, which lasts much longer than acid based paper. Alkaline paper is manufactured with fillers such as calcium carbonate, which bring the pH above 7. An acidic paper like newsprint has a pH around 4.5 which becomes lower once it is printed. The acid level tends to break down the paper and it can deteriorate rapidly, which is why newspapers tend to yellow and fall apart in time. Alkaline paper (a pH above 7) is said to be permanent, but papers that have a neutral pH are still best for preserving items like photographic albums and as matte boards for artwork.

General Precautions for Paper Usage

The following types of paper should not be used, otherwise decreased print quality, paper misfeeds or damage to the MFP or printer may occur:

- Overhead projector transparency that have already been fed through the machine (even if the transparency is still blank)
- Paper that has been printed on by a heat-transfer printer or an inkjet printer
- Paper that is either extremely thick or extremely thin
- Folded, curled, wrinkled, or torn paper
- Paper that has been left unwrapped for a long period of time
- Damp paper, perforated paper, or paper with punched holes
- Extremely smooth, extremely rough paper, or paper with an uneven surface
- Paper that has been treated, such as carbon-backed, heat-sensitive or pressure-sensitive paper
- Paper that has been decorated with foil or embossing
- Paper of a non-standard shape (not rectangular)
- Paper that is bound with glue, staples or paper clips
- Paper with labels attached
- Paper with ribbons, hooks, buttons, etc. attached

Paper Storage

Observe the following precautions when storing the paper:

- Store paper in a cool, dark location with little humidity.
- If humidity is a problem, then paper should be plastic wrapped.
- Allow paper to adjust to any extreme temperature or humidity changes before using.
- If the paper becomes damp, paper misfeeds may occur. Paper that has not been loaded should be kept wrapped or placed in a plastic bag and stored in a cool, dark location with little humidity.
- Store the paper laying flat, not standing on its edge. Curled paper may cause paper misfeeds.



CONNECT_

COMMUNICATE_

CONTROL_



Color Office Workgroup Products



business_ by design.



Media Guide: Office Workgroup Products v1.0

Recommended Media for bizhub C203/C253/C353/C353P

Manufacturer	Brand	KM Item Number ¹	Type / Item Number	Size	Paper Weight	Paper Input Location	Printer/ MFP Setting	Auto Duplex
Plain Paper for Color Output								
Konica Minolta	CF Paper	8918308	Plain Paper 1000 sheets	12" x 18"	28 lb. Bond (105 g/m ²)	Any Tray, Bypass	Thick 1	Yes
Konica Minolta	CF Paper	8918320	Plain Paper 1000 sheets	Ledger	28 lb. Bond (105 g/m ²)	Any Tray, Bypass	Thick 1	Yes
Konica Minolta	CF Paper	8918321	Plain Paper 2000 sheets	Letter	28 lb. Bond (105 g/m ²)	Any Tray, Bypass	Thick 1	Yes
Konica Minolta	CF Paper	8918309	Plain Paper 1500 sheets	12" X 18"	22 lb. Bond (80 g/m ²)	Any Tray, Bypass	Plain Paper	Yes
Konica Minolta	CF Paper	8918314	Plain Paper 1500 sheets	Ledger	22 lb. Bond (80 g/m ²)	Any Tray, Bypass	Plain Paper	Yes
Konica Minolta	CF Paper	8918315	Plain Paper 2500 sheets	Letter	22 lb. Bond (80 g/m ²)	Any Tray, Bypass	Plain Paper	Yes
International Paper	Hammermill	n/a	Color Copy Photo White	Letter	32 lb. Bond (120 g/m ²)	Any Tray, Bypass	Thick 1	Yes
International Paper	Hammermill	n/a	Color Copy	Letter	32 lb. Bond (120 g/m ²)	Any Tray, Bypass	Thick 1	Yes
International Paper	Hammermill	n/a	Color Copy Cover	Letter	60 lb. Cover (163 g/m ²)	Any Tray, Bypass	Thick 2	Yes
International Paper	Hammermill	n/a	Color Copy Cover	Letter	80 lb. Cover (216 g/m ²)	Any Tray, Bypass	Thick 3	Yes
International Paper	Hammermill	n/a	Color Copy Cover	Letter	100 lb. Cover (271 g/m ²)	Bypass	Thick 4	No
Domtar	Microprint Laser	n/a	-	Letter	24 lb. Bond (90 g/m ²)	Any Tray, Bypass	Plain Paper	Yes
Domtar	Recycled Copy	n/a	30% Post Consumer	Letter	20 lb. Bond (75 g/m ²)	Any Tray, Bypass	Plain Paper	Yes
Domtar	Microprint Color Copy	n/a	-	Letter	28 lb. Bond (105 g/m ²)	Any Tray, Bypass	Thick 1	Yes
Smart Papers	Carnival Stellar White	n/a	-	Letter	24 lb. Bond (89 g/m ²)	Any Tray, Bypass	Plain Paper	Yes
Smart Papers	Carnival White	n/a	-	Letter	24 lb. Bond (89 g/m ²)	Any Tray, Bypass	Plain Paper	Yes
Smart Papers	Synergy Bond 25% Cotton	n/a	-	Letter	24 lb. Bond (90 g/m ²)	Any Tray, Bypass	Plain Paper	Yes
Mohawk Fine Papers Inc.	Color Copy	n/a	98 Bright White	Letter	24 lb. Bond (90 g/m ²)	Any Tray, Bypass	Plain Paper	Yes

1= If item number is present, please contact Konica Minolta to order media.

n/a = Not available through Konica Minolta, contact manufacturer.



KONICA MINOLTA

Recommended Media for bizhub C203/C253/C353/C353P

Manufacturer	Brand	KM Item Number ¹	Type / Item Number	Size	Paper Weight	Paper Input Location	Printer/ MFP Setting	Auto Duplex
Plain Paper for Monochrome Output								
International Paper	Hammermill	n/a	Tidal MP	Letter	20 lb. Bond (75 g/m ²)	Any Tray, Bypass	Plain Paper	Yes
Single-Sided Glossy								
Smart Papers	Kromekote Laser High Gloss	n/a	Coated One Side 10 pt Cover	Letter	10 pt. Cover (219 g/m ²)	Any Tray, Bypass	Thick 3	Yes
Smart Papers	Kromekote Laser High Gloss	n/a	Coated One Side 12 pt Cover	Letter	12 pt. Cover (247 g/m ²)	Any Tray, Bypass	Thick 3	Yes
Double-Sided Glossy								
Sappi	Opus Gloss	n/a	-	Letter	80 lb. Text (118 g/m ²)	Any Tray, Bypass	Thick 1	Yes
Sappi	Opus Gloss Cover	n/a	-	Letter	80 lb. Cover (216 g/m ²)	Any Tray, Bypass	Thick 3	Yes
Domtar	Microprint	n/a	Coated Laser Gloss	Letter	80 lb. Cover (216 g/m ²)	Any Tray, Bypass	Thick 3	Yes
Smart Papers	Kromekote plus C2S Cover	n/a	-	Letter	90 lb. Cover (237 g/m ²)	Any Tray, Bypass	Thick 3	Yes
Smart Papers	Krometekote Laser High Gloss	n/a	Coated Two Sides 10 pt Cover	Letter	10 pt. Cover (234 g/m ²)	Any Tray, Bypass	Thick 3	Yes
Smart Papers*	Krometekote Laser High Gloss	n/a	Coated Two Sides	Letter	90 lb. Text (133 g/m ²)	Any Tray, Bypass	Thick 1	Yes
Mohawk Fine Papers Inc.	Mohawk Color Copy	n/a	Gloss Pure White	Letter	32 lb. Bond (120 g/m ²)	Any Tray, Bypass	Thick 1	Yes
Mohawk Fine Papers Inc.	Mohawk Color Copy	n/a	Gloss Pure White	Letter	80 lb. Cover (216 g/m ²)	Any Tray, Bypass	Thick 3	Yes
Mohawk Fine Papers Inc.	Mohawk Color Copy	n/a	Gloss Pure White 100C	Letter	100 lb. Cover (270 g/m ²)	Bypass	Thick 4	No
Cover Stock								
Domtar	Microprint Laser Coated Matte Cover	n/a	Cover	Letter	80 lb. Cover (216 g/m ²)	Any Tray, Bypass	Thick 3	Yes

1= If item number is present, please contact Konica Minolta to order media.

n/a = Not available through Konica Minolta, contact manufacturer.

***Note:** Smart Papers - Krometekote Laser High Gloss 90 lb. Text (133 g/m²) cannot be used in high humidity environments.

Media Guide: Office Workgroup Products v1.0

Recommended Media for bizhub C203/C253/C353/C353P

Manufacturer	Brand	KM Item Number ¹	Type / Item Number	Size	Paper Weight	Paper Input Location	Printer/ MFP Setting	Auto Duplex
Cover Stock (continued)								
Domtar	Microprint Color Copy	n/a	Cover	Letter	80 lb. Cover (216 g/m ²)	Any Tray, Bypass	Thick 3	Yes
Domtar	Microprint Color Copy	n/a	Cover	Letter	60 lb. Cover (163 g/m ²)	Any Tray, Bypass	Thick 2	Yes
Domtar	Microprint Color Copy	n/a	Cover	Letter	65 lb. Cover (176 g/m ²)	Any Tray, Bypass	Thick 2	Yes
Smart Papers	Carnival White Cover	n/a	Cover	Letter	80 lb. Cover (216 g/m ²)	Any Tray, Bypass	Thick 3	Yes
Wausau Paper	Exact Index	n/a	-	Letter	140 lb. Index (255 g/m ²)	Any Tray, Bypass	Thick 3	Yes
Mohawk Fine Papers Inc.	Mohawk Color Copy	n/a	98 Bright White	Letter	80 lb. Cover (216 g/m ²)	Any Tray, Bypass	Thick 3	Yes
Mohawk Fine Papers Inc.	Mohawk Color Copy	n/a	98 Bright White	Letter	100 lb. Cover (270 g/m ²)	Bypass	Thick 4	No
Envelopes								
For the Future	Envelope	n/a	Preservation Wove 5789	11" x 6.75"	24 lb.	Bypass	Envelope	No
Banner Paper								
Konica Minolta	Banner Paper	76400 02409	Plain Paper 200 sheets	11.75" x 47.24"	100 lb. Text (180 g/m ²)	Bypass	Banner Mode / Thick 1	No
Labels								
Avery	4" x 6" Postcard	n/a	5889	Letter	-	Any Tray, Bypass	Thick 1	No
Avery	Color Printing Labels	n/a	6870 30 labels per sheet	Letter	-	Any Tray, Bypass	Thick 1	No
Avery	Color Printing Labels	n/a	6873 8 labels per sheet	Letter	-	Any Tray, Bypass	Thick 1	No
Avery	Color Printing Labels	n/a	6876 2 labels per sheet	Letter	-	Any Tray, Bypass	Thick 1	No
Avery	Color Printing Labels	n/a	6878 4 labels per sheet	Letter	-	Any Tray, Bypass	Thick 1	No

1= If item number is present, please contact Konica Minolta to order media.

n/a = Not available through Konica Minolta, contact manufacturer.



Recommended Media for bizhub C203/C253/C353/C353P

Manufacturer	Brand	KM Item Number ¹	Type / Item Number	Size	Paper Weight	Paper Input Location	Printer/ MFP Setting	Auto Duplex
Specialty Paper								
Techni-Print*	Photo T-Shirt Transfer	n/a	9721PO-8511	Letter	-	Any Tray, Bypass	Thick 2	No
Transparency								
3M	Color Laser	76400 00420	CG3700 9488-4	Letter	5 mil	Bypass	OHP	No

¹= If item number is present, please contact Konica Minolta to order media.

n/a = Not available through Konica Minolta, contact manufacturer.

***Note T-Shirt Transfer Paper:** This paper should not be solely used in the copier and should only be used on a limited basis (250 sheets per run maximum). Also, pay particular attention if a misfeed occurs in the fuser section of the copier. It should be removed immediately (due to odor) and then 15-25 sheets of regular (20lb bond) paper should be run to clean the fusing rollers. Also cannot be used in high humidity environments.

Media Type Specification for bizhub C203/C253/C353/C353P

Standard Tray Capacity and Supported Media

Media Type	Weight	Tray 1	Tray 2	Multiple Bypass	Auto Duplex
Plain Paper	60-90 g/m ²	500 sheets	500 sheets	150 sheets	Yes
OHP Film Transparency	-	-	-	20 sheets ¹	No
Thick Paper 1	91-150 g/m ²	150 sheets	150 sheets		Yes
Thick Paper 2	151-209 g/m ²				
Thick Paper 3	210-256 g/m ²				
Thick Paper 4	257-271 g/m ²	-	-		No
Post Cards	-	-	-		
Envelopes	-	-	-		
Labels	-	-	-	20 sheets	
Banner Paper	127-210 g/m ²	-	-	10 sheets	

PC-104/204 Tray Capacity and Supported Media

Media Type	Weight	Tray 3	Tray 4	Auto Duplex
Plain Paper	60-90 g/m ²	500 sheets	500 sheets	Yes
Thick Paper 1	91-150 g/m ²	150 sheets	150 sheets	Yes
Thick Paper 2	151-209 g/m ²			Yes
Thick Paper 3	210-256 g/m ²			Yes

PC-405 Tray Capacity and Supported Media

Media Type	Weight	LCT Tray	Auto Duplex
Plain Paper	60-90 g/m ²	2,500 sheets	Yes
Thick Paper 1	91-150 g/m ²	1,000 sheets	Yes
Thick Paper 2	151-209 g/m ²		Yes
Thick Paper 3	210-256 g/m ²		Yes

Important Notes:

1: Monochrome print only.

Automatic Duplex:

Only for plain paper weighing 64-90 g/m² or thick paper weighing 91-256 g/m² are reliably fed.



Recommended Media for bizhub C451/C550/C650

Manufacturer	Brand	KM Item Number ¹	Type / Item Number	Size	Paper Weight	Paper Input Location	MFP Setting	Auto Duplex
Plain Paper								
Konica Minolta	CF Paper	8918308	Plain Paper 1000 sheets	12" x 18"	28 lb. Bond (105 g/m ²)	Any Tray, Bypass	Thick 1	Yes
Konica Minolta	CF Paper	8918320	Plain Paper 1000 sheets	Ledger	28 lb. Bond (105 g/m ²)	Any Tray, Bypass	Thick 1	Yes
Konica Minolta	CF Paper	8918321	Plain Paper 2000 sheets	Letter	28 lb. Bond (105 g/m ²)	Any Tray, Bypass	Thick 1	Yes
Konica Minolta	CF Paper	8918309	Plain Paper 1500 sheets	12" X 18"	22 lb. Bond (80 g/m ²)	Any Tray, Bypass	Plain Paper	Yes
Konica Minolta	CF Paper	8918314	Plain Paper 1500 sheets	Ledger	22 lb. Bond (80 g/m ²)	Any Tray, Bypass	Plain Paper	Yes
Konica Minolta	CF Paper	8918315	Plain Paper 2500 sheets	Letter	22 lb. Bond (80 g/m ²)	Any Tray, Bypass	Plain Paper	Yes
International Paper	Hammermill	n/a	Color Copy Photo White	Letter	32 lb. Bond (120 g/m ²)	Any Tray, Bypass	Thick 1	Yes
International Paper	Hammermill	n/a	Color Copy Cover	Letter	60 lb. Cover (163 g/m ²)	Any Tray, Bypass	Thick 2	Yes
Domtar	Recycled Copy	n/a	White 92 GE (30% Post Consumer)	Letter	20 lb. Bond (75 g/m ²)	Any Tray, Bypass	Plain Paper	Yes
Domtar	Microprint Laser	n/a	White 96 GE	Letter	22 lb. Bond (80 g/m ²)	Any Tray, Bypass	Plain Paper	Yes
Smart Papers	Synergy Bond 25% Cotton	n/a	Any	Letter	24 lb. Bond (90 g/m ²)	Any Tray, Bypass	Plain Paper	Yes
Mohawk Fine Papers Inc.	Mohawk Color Copy	n/a	98 Bright White	Letter	24 lb. Bond (90 g/m ²)	Any Tray, Bypass	Plain Paper	Yes
Domtar	Microprint Laser	n/a	White 96 GE	Letter	28 lb. Bond (105 g/m ²)	Any Tray, Bypass	Plain Paper	Yes
Cover Stock								
Domtar	Microprint Color Copy	n/a	Cover	Letter	60 lb. Cover (163 g/m ²)	Any Tray, Bypass	Thick 2	Yes
International Paper	Hammermill	n/a	Color Copy Cover—Photo White	Letter	60 lb. Cover (163 g/m ²)	Any Tray, Bypass	Thick 2	Yes
Domtar	Microprint Color Copy	n/a	Cover	Letter	65 lb. Cover (176 g/m ²)	Any Tray, Bypass	Thick 2	Yes

¹= If item number is present, please contact Konica Minolta to order media.

n/a = Not available through Konica Minolta, contact manufacturer.

Media Guide: Office Workgroup Products v1.0

Recommended Media for bizhub C451/C550/C650

Manufacturer	Brand	KM Item Number ¹	Type / Item Number	Size	Paper Weight	Paper Input Location	MFP Setting	Auto Duplex
Cover Stock (continued)								
Domtar	Microprint Coated Laser	n/a	White 92 GE	Letter	80 lb. Cover (216 g/m ²)	Any Tray, Bypass	Thick 3	Yes
International Paper	Hammermill Color Copy Cover	n/a	-	Letter	80 lb. Cover (216 g/m ²)	Any Tray, Bypass	Thick 3	Yes
Domtar	Microprint Coated Laser	n/a	Matte Cover	Letter	80 lb. Cover (216 g/m ²)	Any Tray, Bypass	Thick 3	Yes
Wausau Paper	Exact Index	n/a	-	Letter	140 lb. Index (255 g/m ²)	Any Tray, Bypass	Thick 3	Yes
International Paper	Springhill	n/a	Index Stock Code 015545	Letter	140 lb. Index (255 g/m ²)	Bypass	Thick 3	Yes
International Paper	Hammermill Color Copy Cover	n/a	Photo White	Letter	100 lb. Cover (270 g/m ²)	Bypass	Thick 4	No
Mohawk Fine Papers Inc.	Mohawk Color Copy	n/a	98 Bright White	Letter	100 lb. Cover (270 g/m ²)	Bypass	Thick 4	No
Domtar	Microprint Color Copy	n/a	Cover	Letter	60 lb. Cover (163 g/m ²)	Any Tray, Bypass	Thick 2	Yes
Double-Sided Glossy								
Mohawk Fine Papers Inc.	Mohawk Color Copy	n/a	Gloss	12" x 18"	100 lb. Cover (270 g/m ²)	Bypass	Thick 4	No
Banner Paper (for C451 only)								
Konica Minolta	Banner Paper	76400 02409	Plain Paper 200 sheets	11.75" x 47.24"	100 lb. Text (180 g/m ²)	Banner Mode / Thick 3	Bypass	No
Labels								
Avery	CD/DVD Label	n/a	#6692	Letter	-	Plain Paper	Bypass	No
Envelopes								
For the Future	Envelope	n/a	Preservation Wove 5789	11" x 6.75"	24 lb.	Bypass	Envelope	No

¹= If item number is present, please contact Konica Minolta to order media.

n/a = Not available through Konica Minolta, contact manufacturer.

***Note:** Spring Hill Index (Thick 3/140lb. Index) supported via Bypass ONLY.



Media Type Specification for bizhub C451/C550/C650

Standard Tray Capacity and Supported Media

Media Type	Weight	Tray 1	Tray 2	Tray 3	Tray 4	Multiple Bypass	Auto Duplex
Plain Paper	64-90 g/m ²	500 sheets	500 sheets	1,500 sheets	1,000 sheets	150 sheets	Yes
OHP Film Transparency	-	-	-	-	-	20 sheets ¹	No
Thick Paper 1	91-120 g/m ²	400 sheets	400 sheets	1,150 sheets	750 sheets	100 sheets	Yes
Thick Paper 1+	121-157 g/m ²	280 sheets	280 sheets	800 sheets	500 sheets	80 sheets	
Thick Paper 2	158-209 g/m ²	250 sheets	250 sheets	700 sheets	450 sheets	70 sheets	
Thick Paper 3	210-256 g/m ²	200 sheets	200 sheets	600 sheets	400 sheets	60 sheets	
Thick Paper 4	257-300 g/m ²	-	-	-	-	50 sheets	No
Postcards	-	-	-	200 sheets	200 sheets	50 sheets	
Envelopes	-	-	-	-	-	10 sheets	
Labels	-	-	-	-	-	50 sheets	
Banner Paper (C451 only)	127-210 g/m ²	-	-	-	-	1 sheet	

LU-301 Tray Capacity and Supported Media

Media Type	Weight	Large Capacity Tray	Auto Duplex
Plain Paper	64-90 g/m ²	3,000 sheets	Yes
Thick Paper 1	91-120 g/m ²	2,500 sheets	
Thick Paper 1+	121-157 g/m ²	1,750 sheets	
Thick Paper 2	158-209 g/m ²	1,550 sheets	
Thick Paper 3	210-256 g/m ²	1,300 sheets	

Important Notes:

1: Monochrome print only.

Automatic Duplex:

Only for plain paper weighing 64-90 g/m² or thick paper weighing 91-256 g/m² are reliably fed.

Media Guide: Office Workgroup Products v1.0

Recommended Media for magicolor 24xx/25xx series printers

Manufacturer	Brand	KM Item Number ¹	Type / Item Number	Size	Paper Weight	Paper Input Location	Printer Setting	Auto Duplex
Plain Paper								
Impact	Copy Paper	n/a	92 Bright 68117	Letter	75 g/m ²	Multi./ Upper	Paper	Yes
Impact	Copy Paper	n/a	92 Bright 68119	Legal	75 g/m ²	Multipurpose	Paper	Yes
Staples	Multiuse	n/a	96 Bright 513099	Letter	75 g/m ²	Multi./ Upper	Paper	Yes
International Paper	Hammermill Fore MP	n/a	White 10329-1	Legal	75 g/m ²	Multipurpose	Paper	Yes
International Paper	Hammermill Premium Laser	n/a	94 Bright 16600-0	Letter	90 g/m ²	Multi./ Upper	Paper	Yes
International Paper	Hammermill Laser Print	n/a	96 Bright 10460-4	Letter	90 g/m ²	Multi./ Upper	Paper	Yes
International Paper	Hammermill Laser Print	n/a	94 Bright 10461-2	Legal	90 g/m ²	Multipurpose	Paper	Yes
Recycled								
Office Depot	EnviroCopy	n/a	104 Bright 563-024	Letter	75 g/m ²	Multi./ Upper	Recycled	Yes
Staples	Print Paper	n/a	97 Bright 554638	Letter	90 g/m ²	Multi./ Upper	Recycled	Yes
Office Max	Copy Paper	n/a	92 Bright OM55957	Letter	20 lb.	Multi./ Upper	Recycled	Yes
Transparency								
3M	Color Laser	76400 00420	CG3700 9488-4	Letter	5 mil	Multipurpose	Trans.	No
3M	Copiers	n/a	PP2500 9497-5	Letter	4.5 mil	Multipurpose	Trans.	No
Labels								
Avery	Laser	n/a	Mailing Labels 5260	Letter	0.16 mm	Multipurpose	Label	No
Thick Stock								
International Paper	Hammermill Color Copy	n/a	98 Bright 10246-7	Letter	105 g/m ²	Multipurpose	Thick	Yes
Wausau	Bright White	n/a	96 Bright 92906	Letter	105 g/m ²	Multipurpose	Thick	Yes
Staples	Color Laser	n/a	97 Bright 633213	Letter	120 g/m ²	Multipurpose	Thick	Yes

1= If item number is present, please contact Konica Minolta to order media.

n/a = Not available through Konica Minolta, contact manufacturer.



Recommended Media for magicolor 24xx/25xx series printers

Manufacturer	Brand	KM Item Number ¹	Type / Item Number	Size	Paper Weight	Paper Input Location	Printer Setting	Auto Duplex
Thick Stock (continued)								
International Paper	Hammermill Color Copy	n/a	Photo White 02254-9	Letter	163 g/m ²	Multipurpose	Thick	Yes
International Paper	Hammermill Color Copy	n/a	98 Bright 12254-9	Letter	163 g/m ²	Multipurpose	Thick	Yes
Wausau	Card Stock	n/a	92 Bright 49108	Letter	165 g/m ²	Multipurpose	Thick	No
Glossy Stock								
International Paper	Hammermill Color Laser	n/a	90 Bright 16311-0	Letter	120 g/m ²	Multipurpose	Thick	Yes
Staples	Gloss White	n/a	96 Bright 633215	Letter	120 g/m ²	Multipurpose	Thick	Yes
International Paper	Hammermill Office One	n/a	Business Gloss 16302-0	Letter	120 g/m ²	Multipurpose	Thick	Yes
Smart Media	Kromekote	n/a	2S Text L285119	Letter	133 g/m ²	Multipurpose	Thick	Yes
Envelopes								
Office Max	Envelopes	n/a	Business OM98121	3.6"X 6.5"	0.31 mm	Multipurpose	Envelope	No
Office Max	Envelopes	n/a	Security OM98120	3.6"X 6.5"	0.31 mm	Multipurpose	Envelope	No
Staples	Envelopes	n/a	Security 200519	# 10	24 lb.	Multipurpose	Envelope	No
Staples	Envelopes	n/a	Business 187013	# 10	24 lb.	Multipurpose	Envelope	No
Office Max	Envelopes	n/a	Business OM98125	# 10	24 lb.	Multipurpose	Envelope	No
Office Max	Envelopes	n/a	Business OM98123	# 10	24 lb.	Multipurpose	Envelope	No
Office Depot	Envelopes	n/a	Business 633-888	# 10	24 lb.	Multipurpose	Envelope	No
Office Depot	Envelopes	n/a	Security 633-896	# 10	24 lb.	Multipurpose	Envelope	No
Other								
PPG	Teslin	n/a	Synthetic SPID1400	A4	14 mils	Multipurpose	Thick	Yes
PPG	Teslin	n/a	Synthetic SP1000	Letter	10 mils	Multipurpose	Thick	Yes

¹ = If item number is present, please contact Konica Minolta to order media.

n/a = Not available through Konica Minolta, contact manufacturer.

Media Type Specification for magicolor 24xx/25xx series printers

Media Type	Weight	Multipurpose Tray		Optional Cassette		Auto Duplex
		Supported	Capacity	Supported	Capacity	
Plain Paper	60-90 g/m ²	Yes	200	Yes	500	Yes
Recycled	60-90 g/m ²	Yes	200	Yes	500	Yes
Transparency	4.5-5 mils	Yes	50	No	N/A	No
Letterhead	60-90 g/m ²	Yes	50	No	N/A	Yes
Envelopes	91-163 g/m ²	Yes	10	No	N/A	No
Labels	60-163 g/m ²	Yes	50	No	N/A	No
Thick	91-163 g/m ²	Yes	50	No	N/A	No
Japanese Postcard	60-163 g/m ²	Yes	50	No	N/A	No
Glossy	60-90 g/m ²	Yes	50	No	N/A	No



Recommended Media for magicolor 2480MF/2590MF & bizhub C10/X

Manufacturer	Brand	KM Item Number ¹	Type / Item Number	Size	Paper Weight	Paper Input Location	Printer Setting	Auto Duplex
Plain Paper								
Impact	Copy Paper	n/a	92 Bright 68117	Letter	75 g/m ²	Multipurpose	Paper	Yes
Impact	Copy Paper	n/a	92 Bright 44001	Legal	75 g/m ²	Multipurpose	Paper	Yes
Staples	Multiuse	n/a	96 Bright 513099	Letter	75 g/m ²	Multipurpose	Paper	Yes
International Paper	Hammermill Fore MP	n/a	White 10329-1	Legal	75 g/m ²	Multipurpose	Paper	Yes
International Paper	Hammermill Laser Print	n/a	94 Bright 10460-4	Letter	90 g/m ²	Multipurpose	Paper	Yes
International Paper	Hammermill Laser Print	n/a	94 Bright 10461-2	Legal	90 g/m ²	Multipurpose	Paper	Yes
Recycled								
Office Depot	EnviroCopy	n/a	104 Bright 563-024	Letter	75 g/m ²	Multipurpose	Recycled	Yes
Staples	Printing Paper	n/a	97 Bright 554638	Letter	90 g/m ²	Multipurpose	Recycled	Yes
Office Max	Copy Paper	n/a	92 Bright OM55957	Letter	20 lb.	Multipurpose	Recycled	Yes
Transparency								
3M	Color Laser	76400 00420	CG3700 9488-4	Letter	5 mil	Multipurpose	Trans.	No
Thick Stock 1								
International Paper	Hammermill Color Copy	n/a	98 Bright 10246-7	Letter	105 g/m ²	Multipurpose	Thick	Yes
Wausau	Bright White	n/a	96 Bright 92906	Letter	105 g/m ²	Multipurpose	Thick	Yes
Staples	Color Laser	n/a	97 Bright 633213	Letter	120 g/m ²	Multipurpose	Thick	Yes
International Paper	Hammermill Color Copy	n/a	Photo White 02254-9	Letter	163 g/m ²	Multipurpose	Thick	Yes
International Paper	Hammermill Color Copy	n/a	98 Bright 12254-9	Letter	163 g/m ²	Multipurpose	Thick	Yes

¹= If item number is present, please contact Konica Minolta to order media.

n/a = Not available through Konica Minolta, contact manufacturer.

Media Guide: Office Workgroup Products v1.0

Recommended Media for magicolor 2480MF/2590MF & bizhub C10/X

Manufacturer	Brand	KM Item Number ¹	Type / Item Number	Size	Paper Weight	Paper Input Location	Printer Setting	Auto Duplex
Envelopes								
Staples	Envelopes	n/a	Security 200519	# 10	24 lb.	Multipurpose	Envelope	No
Staples	Envelopes	n/a	Business 187013	# 10	24 lb.	Multipurpose	Envelope	No
Office Depot	Envelopes	n/a	Security 633-896	# 10	24 lb.	Multipurpose	Envelope	No
Office Depot	Envelopes	n/a	Business 633-888	# 10	24 lb.	Multipurpose	Envelope	No
Office Max	Envelopes	n/a	Business OM98123	# 10	24 lb.	Multipurpose	Envelope	No
Office Max	Envelopes	n/a	Business OM98125	# 10	24 lb.	Multipurpose	Envelope	No
Glossy Stock								
International Paper	Hammermill Color Laser Gloss	n/a	90 Bright 16311-0	Letter	120 g/m ²	Multipurpose	Glossy	Yes
Staples	Gloss White	n/a	96 Bright 633215	Letter	120 g/m ²	Multipurpose	Glossy	Yes
Other								
PPG	Teslin	n/a	Synthetic SP1000	Letter	10 mils	Multipurpose	Thick	Yes
PPG	Teslin	n/a	Synthetic SPID1400	A4	14 mils	Multipurpose	Thick	Yes

¹= If item number is present, please contact Konica Minolta to order media.

n/a = Not available through Konica Minolta, contact manufacturer.



Media Type Specification for magicolor 2480MF/2590MF & bizhub C10/X

Media Type	Weight	Multipurpose Tray		Optional Cassette		Duplex	ADF (60-128 g/m ²)
		Supported	Capacity	Supported	Capacity		
Plain Paper	60-90 g/m ²	Yes	200	Yes	500	Yes	Yes
Recycled	60-90 g/m ²	Yes	200	Yes	500	Yes	Yes
Transparency	4.5-5 mils	Yes	50	No	N/A	No	No
Letterhead	60-90 g/m ²	Yes	50	No	N/A	Yes	Yes
Envelopes	91-163 g/m ²	Yes	10	No	N/A	No	No
Labels	60-163 g/m ²	Yes	50	No	N/A	No	No
Thick Paper	91-163 g/m ²	Yes	50	No	N/A	No	No
Glossy Paper	60-90 g/m ²	Yes	50	No	N/A	No	No

Media Guide: Office Workgroup Products v1.0

Recommended Media for magicolor 4650EN/DN & bizhub C20P/X

Manufacturer	Brand	KM Item Number ¹	Type / Item Number	Size	Paper Weight	Paper Input Location	Printer Setting	Auto Duplex
Plain Paper for Color Output								
Konica Minolta	CF Paper	8918315	Plain Paper 2500 sheets	Letter	22 lb. Bond (80 g/m ²)	Multipurpose, Any Tray	Plain Paper	Yes
Konica Minolta	CF Paper	8918321	Plain Paper 2000 sheets	Letter	28 lb. Bond (105 g/m ²)	Multipurpose, Any Tray	Thick 1	Yes
Plain Paper for Monochrome Output								
Xerox	4024 DP	n/a	3R727	Letter	24 lb. Bond (90 g/m ²)	Multipurpose, Any Tray	Plain Paper	Yes
Transparency								
3M	Color Laser	76400 00420	CG3700 9488-4	Letter	5 mil	Multipurpose	Trans.	No
Labels								
Avery	Mailing Labels	n/a	5160	Letter	-	Multipurpose	Label	No

¹ = If item number is present, please contact Konica Minolta to order media.

n/a = Not available through Konica Minolta, contact manufacturer.



Media Type Specification for magicolor 4650EN/DN & bizhub C20P/X

Standard Tray Capacity and Supported Media

Media Type	Weight	Tray 1	Tray 2	Auto Duplex ¹	
Plain Paper	60-90 g/m ²	100 sheets	250 sheets	Yes	
Thick Paper 1	91-150 g/m ²	20 sheets	-		
Thick Paper 2	151-210 g/m ²				
Label	-				
Letterhead	-			No	
OHP Film	-				
Transparency	-				
Glossy1	100-128 g/m ²	10 sheets		Yes	
Glossy 2	129-158 g/m ²			No	
Postcard	-				
Envelope	-				

Important Notes:

1: Only if duplex option is installed.

Media Guide: Office Workgroup Products v1.0

Recommended Media for magicolor 5550/5570 & bizhub C30P/X

Manufacturer	Brand	KM Item Number ¹	Type / Item Number	Size	Paper Weight	Paper Input Location	Printer Setting	Auto Duplex
Plain Paper								
Office Depot	EnviroCopy	n/a	104 Bright 563-024	Letter	75 g/m ²	All	Recycled	Yes
Impact	Copy Paper	n/a	92 Bright 68117	Letter	75 g/m ²	All	Paper	Yes
Staples	Multiuse	n/a	96 Bright 513099	Letter	75 g/m ²	All	Paper	Yes
International Paper	Hammermill Premium Laser	n/a	94 Bright 16600-0	Letter	90 g/m ²	All	Paper	Yes
Staples	Printing Paper	n/a	97 Bright 554638	Letter	90 g/m ²	All	Recycled	Yes
International Paper	Hammermill Laser Print	n/a	96 bright 10460-4	Letter	90 g/m ²	All	Paper	Yes
Transparency								
3M	Color Laser	76400 00420	CG3700 9488-4	Letter	5 mil	Multipurpose	Trans.	No
3M	Copiers	n/a	PP2500 9497-5	Letter	4.5 mil	Multipurpose	Trans.	No
Labels								
Avery	Laser	n/a	Mailing Labels 5260	Letter	0.16 mm	Multipurpose	Label	No
Office Depot	Laser	n/a	Shipping Label 612-051	Letter	0.17 mm	Multipurpose	Label	No
Office Depot	Laser	n/a	Return Labels 612-051	Letter	0.17 mm	Multipurpose	Label	No
Thick Stock 1								
International Paper	Hammermill Color Copy	n/a	98 Bright 10246-7	Letter	105 g/m ²	Multipurpose	Thick-1	No
Wausau	Bright White	n/a	96 Bright 92906	Letter	105 g/m ²	Multipurpose	Thick-1	No
Staples	Color Laser	n/a	97 Bright 633213	Letter	120 g/m ²	Multipurpose	Thick-1	No

¹= If item number is present, please contact Konica Minolta to order media.

n/a = Not available through Konica Minolta, contact manufacturer.



Recommended Media for magicolor 5550/5570 & bizhub C30P/X

Manufacturer	Brand	KM Item Number ¹	Type / Item Number	Size	Paper Weight	Paper Input Location	Printer Setting	Auto Duplex
Thick Stock 2								
International Paper	Hammermill Color Copy	n/a	Photo White 02254-9	Letter	163 g/m ²	Multipurpose	Thick-2	No
International Paper	Hammermill Color Copy	n/a	98 Bright 12254-9	Letter	163 g/m ²	Multipurpose	Thick-2	No
Wausau	Card Stock	n/a	92 Bright 49108	Letter	165 g/m ²	Multipurpose	Thick-2	No
Wausau	Card Stock	n/a	96 Bright 90901	Letter	176 g/m ²	Multipurpose	Thick-2	No
International Paper	Hammermill Card Stock	n/a	White 18634-0	Letter	200 g/m ²	Multipurpose	Thick-2	No
Wausau	Exact Index	n/a	Card Stock 49598	Letter	200 g/m ²	Multipurpose	Thick-2	No
Envelopes								
Office Max	Envelopes	n/a	Business OM98123	# 10	24 lb.	Multipurpose	Envelope	No
Office Max	Envelopes	n/a	Security OM98122	# 10	24 lb.	Multipurpose	Envelope	No
Office Max	Envelopes	n/a	Business OM98121	3.6"X 6.5"	24 lb.	Multipurpose	Envelope	No
Office Max	Envelopes	n/a	Security OM98120	3.6"X 6.5"	24 lb.	Multipurpose	Envelope	No
Staples	Envelopes	n/a	Business 187013	#10	24 lb.	Multipurpose	Envelope	No
Staples	Envelopes	n/a	Security 200519	#10	24 lb.	Multipurpose	Envelope	No
Office Depot	Envelopes	n/a	Business 633-888	#10	24 lb.	Multipurpose	Envelope	No
Office Depot	Envelopes	n/a	Security 633-896	#10	24 lb.	Multipurpose	Envelope	No

1= If item number is present, please contact Konica Minolta to order media.

n/a = Not available through Konica Minolta, contact manufacturer.

Media Guide: Office Workgroup Products v1.0

Recommended Media for magicolor 5550/5570 & bizhub C30P/X

Manufacturer	Brand	KM Item Number ¹	Type / Item Number	Size	Paper Weight	Paper Input Location	Printer Setting	Auto Duplex
Glossy Stock								
International Paper	Hammermill Color Laser	n/a	Gloss 16311-0	Letter	120 g/m ²	Multipurpose	Glossy	No
Staples	Color Laser	n/a	Gloss White 633215	Letter	120 g/m ²	Multipurpose	Glossy	No
International Paper	Hammermill Business Gloss	n/a	92 Bright 16302-0	Letter	120 g/m ²	Multipurpose	Glossy	No
Banner Paper								
Konica Minolta	Q-Media	1710637-001	Banner	8.5"X40"	65 lb. Cover 176 g/m ²	Multipurpose	Thick-2	No
Other								
PPG	Teslin	n/a	SP1200	A4	0.33 mm	Multipurpose	Thick-2	No

¹= If item number is present, please contact Konica Minolta to order media.

n/a = Not available through Konica Minolta, contact manufacturer.



Media Type Specification for magicolor 5550/5570 & bizhub C30P/X

Media Type	Weight	Standard Cassette		Multi. / Manual Tray		Optional Cassette		Auto Duplex
		Supported	Capacity	Supported	Capacity	Supported	Capacity	
Plain Paper	60-90 g/m ²	Yes	500	Yes	100	Yes	500	Yes
Recycled Paper	60-90 g/m ²	Yes	500	Yes	100	Yes	500	Yes
Transparency	4.5-5 mils	No	N/A	Yes	20	No	N/A	No
Letterhead	60-90 g/m ²	No	N/A	Yes	20	No	N/A	No
Envelopes	60-90 g/m ²	No	N/A	Yes	10	No	N/A	No
Labels	60-90 g/m ²	No	N/A	Yes	20	No	N/A	No
Thick Paper1	91-150 g/m ²	No	N/A	Yes	20	No	N/A	No
Thick Paper2	151-210 g/m ²	No	N/A	Yes	20	No	N/A	No
Japanese Postcard	91-210 g/m ²	No	N/A	Yes	20	No	N/A	No
Glossy Media I/II	90-210 g/m ²	No	N/A	Yes	20	No	N/A	No
Banner Paper	60-210 g/m ²	No	N/A	Yes	1	No	N/A	No

Media Guide: Office Workgroup Products v1.0

Recommended Media for magicolor 7450

Manufacturer	Brand	KM Item Number ¹	Type / Item Number	Size	Paper Weight	Paper Input Location	Printer Setting	Auto Duplex
Plain Paper								
Office Depot	EnviroCopy	n/a	104 Bright 563-024	Letter	75 g/m ²	All	Recycled	Yes
Impact	Copy Paper	n/a	92 Bright 68117	Letter	75 g/m ²	All	Paper	Yes
Staples	Multiuse	n/a	96 Bright 513099	Letter	75 g/m ²	All	Paper	Yes
International Paper	Hammermill Premium Laser	n/a	94 Bright 16600-0	Letter	90 g/m ²	All	Paper	Yes
Staples	Printing Paper	n/a	97 Bright 554638	Letter	90 g/m ²	All	Recycled	Yes
International Paper	Hammermill Laser Print	n/a	96 bright 10460-4	Letter	90 g/m ²	All	Paper	Yes
Transparency								
3M	Color Laser	76400 00420	CG3700 9488-4	Letter	5 mil	Multipurpose, Upper Tray	Trans.	No
3M	Copiers	n/a	PP2500 9497-5	Letter	4.5 mil	Multipurpose, Upper Tray	Trans.	No
Label								
Avery	Laser	n/a	Mailing Labels 5260	Letter	0.16 mm	Multipurpose, Upper Tray	Label	No
Thick Stock 1								
International Paper	Hammermill Color Copy	n/a	98 Bright 10246-7	Letter	105 g/m ²	Multipurpose, Upper Tray	Thick-1	Yes
Wausau	Bright White	n/a	96 Bright 92906	Letter	105 g/m ²	Multipurpose, Upper Tray	Thick-1	Yes
Staples	Color Laser	n/a	97 Bright 633213	Letter	120 g/m ²	Multipurpose, Upper Tray	Thick-1	Yes
International Paper	Hammermill Color Copy	n/a	98 Bright 10612-5	12"X 18"	105 g/m ²	Multipurpose, Upper Tray	Thick-1	Yes
International Paper	Hammermill Color Copy	n/a	98 Bright 10254-1	11"X 17"	105 g/m ²	Multipurpose, Upper Tray	Thick-1	Yes

¹= If item number is present, please contact Konica Minolta to order media.

n/a = Not available through Konica Minolta, contact manufacturer.



Recommended Media for magicolor 7450

Manufacturer	Brand	KM Item Number ¹	Type / Item Number	Size	Paper Weight	Paper Input Location	Printer Setting	Auto Duplex
Thick Stock 2								
International Paper	Hammermill Color Copy	n/a	Photo White 02254-9	Letter	163 g/m ²	Multipurpose, Upper Tray	Thick-2	Yes
International Paper	Hammermill Color Copy	n/a	98 Bright 12254-9	Letter	163 g/m ²	Multipurpose, Upper Tray	Thick-2	Yes
Wausau	Card Stock	n/a	92 Bright 49108	Letter	165 g/m ²	Multipurpose, Upper Tray	Thick-2	Yes
International Paper	Hammermill Color Copy	n/a	98 Bright 12004-0	12"X 18"	163 g/m ²	Multipurpose, Upper Tray	Thick-2	Yes
International Paper	Hammermill Color Copy	n/a	98 Bright 12255-6	11"X 17"	163 g/m ²	Multipurpose, Upper Tray	Thick-2	Yes
Wausau	Card Stock	n/a	96 Bright 90901	Letter	176 g/m ²	Multipurpose, Upper Tray	Thick-2	Yes
International Paper	Hammermill Card Stock	n/a	White 18634-0	Letter	200 g/m ²	Multipurpose, Upper Tray	Thick-2	Yes
Wausau	Exact Index	n/a	Card Stock 49598	Letter	200 g/m ²	Multipurpose, Upper Tray	Thick-2	Yes
Wausau	Card Stock	n/a	92 Bright 49508	Letter	200 g/m ²	Multipurpose, Upper Tray	Thick-2	Yes
Thick Stock 3								
International Paper	Hammermill Color Copy	n/a	98 Bright 12002-3	Letter	216 g/m ²	Multipurpose, Upper Tray	Thick-3	Yes
International Paper	Hammermill Color Copy	n/a	98 Bright 12003-7	11"X 17"	216 g/m ²	Multipurpose, Upper Tray	Thick-3	Yes
International Paper	Hammermill Color Copy	n/a	98 Bright 13320-0	12"X 18"	216 g/m ²	Multipurpose, Upper Tray	Thick-3	Yes
Wilcox	Titan	n/a	88 Bright C2S	Letter	248 g/m ²	Multipurpose, Upper Tray	Thick-3	Yes
Envelopes								
Office Max	Envelopes	n/a	Business OM98123	# 10	24 lb.	Multipurpose	Envelope	No
Office Max	Envelopes	n/a	Security OM98122	# 10	24 lb.	Multipurpose	Envelope	No
Office Max	Envelopes	n/a	Business OM98121	3.6"X 6.5"	24 lb.	Multipurpose	Envelope	No

¹= If item number is present, please contact Konica Minolta to order media.

n/a = Not available through Konica Minolta, contact manufacturer.

Media Guide: Office Workgroup Products v1.0

Recommended Media for magicolor 7450

Manufacturer	Brand	KM Item Number ¹	Type / Item Number	Size	Paper Weight	Paper Input Location	Printer Setting	Auto Duplex
Envelopes (continued)								
Office Max	Envelopes	n/a	Security OM98120	3.6"X 6.5"	24 lb.	Multipurpose	Envelope	No
Staples	Envelopes	n/a	Business 187013	#10	24 lb.	Multipurpose	Envelope	No
Staples	Envelopes	n/a	Security 200519	#10	24 lb.	Multipurpose	Envelope	No
Office Depot	Envelopes	n/a	Business 633-888	#10	24 lb.	Multipurpose	Envelope	No
Office Depot	Envelopes	n/a	Security 633-896	#10	24 lb.	Multipurpose	Envelope	No
Glossy Stock								
International Paper	Hammermill Color Copy	n/a	90 Bright 16311-0	Letter	120 g/m ²	Multipurpose, Upper Tray	Thick-1	Yes
Staples	Gloss White	n/a	96 Bright 633215	Letter	120 g/m ²	Multipurpose, Upper Tray	Thick-1	Yes
International Paper	Hammermill Business Gloss	n/a	92 Bright 16302-0	Letter	120 g/m ²	Multipurpose, Upper Tray	Thick-1	Yes
Smart Media	Kromekote	n/a	2S Text L285119	Letter	133 g/m ²	Multipurpose, Upper Tray	Thick-1	Yes
International Paper	Hammermill Color Copy	n/a	90 Bright 10620-0	Letter	216 g/m ²	Multipurpose, Upper Tray	Thick-3	Yes
Smart Media	Kromekote	n/a	2S Cover L285110	Letter	234 g/m ²	Multipurpose, Upper Tray	Thick-3	Yes
Mohawk	Color Copy	n/a	96 Bright 36-107	Letter	243 g/m ²	Multipurpose, Upper Tray	Thick-3	Yes
Stora Enso	Gusto Gloss	n/a	Cover	Letter	271 g/m ²	Multipurpose, Upper Tray	Thick-3	No
Stora Enso	Gusto Gloss	n/a	Cover	11"X 17"	271 g/m ²	Multipurpose, Upper Tray	Thick-3	No
Glossy Stock								
Konica Minolta	Q-Media	1710636-001	Banner 50 sheets	12.21" X 40"	176 g/m ²	Multipurpose, Upper Tray	Thick-2	No
Konica Minolta	Q-Media	1710367-001	Banner 50 sheets	8.5" X 40"	176 g/m ²	Multipurpose, Upper Tray	Thick-2	No

¹= If item number is present, please contact Konica Minolta to order media.

n/a = Not available through Konica Minolta, contact manufacturer.



Recommended Media for magicolor 7450

Manufacturer	Brand	KM Item Number ¹	Type / Item Number	Size	Paper Weight	Paper Input Location	Printer Setting	Auto Duplex
Banner Paper								
Konica Minolta	Q-Media	1710637-001	Banner 50 sheets	8.5"X40"	176 g/m ²	Multipurpose	Thick-2	No
Konica Minolta	Q-Media	1710636-001	Banner 50 sheets	12.25" X 40"	176 g/m ²	Multipurpose	Thick-2	No
Other								
PPG	Teslin	n/a	SP1200	A4	0.33 mm	Multipurpose, Upper Tray	Thick-3	Yes

¹= If item number is present, please contact Konica Minolta to order media.

n/a = Not available through Konica Minolta, contact manufacturer.

Media Type Specification for magicolor 7450

Media Type	Weight	Multipurpose Cassette		Multi. / Manual Tray		Optional Cassette		Auto Duplex
		Supported	Capacity	Supported	Capacity	Supported	Capacity	
Plain Paper	64-90 g/m ²	Yes	250	Yes	100	Yes	500	Yes
Recycled Paper	64-90 g/m ²	Yes	250	Yes	100	Yes	500	Yes
Transparency	5 mils	Yes	50	Yes	10	No	N/A	No
Transparency II	4.5 mils	Yes	50	Yes	10	No	N/A	No
Letterhead	64-90 g/m ²	Yes	50	Yes	10	No	N/A	No
Envelopes	64-90 g/m ²	Yes	10	Yes	10	No	N/A	No
Labels	64-90 g/m ²	Yes	50	Yes	10	No	N/A	No
Thick Paper 1	91-150 g/m ²	Yes	50	Yes	10	No	N/A	Yes
Thick Paper 2	151-210 g/m ²	Yes	50	Yes	10	Yes	N/A	Yes
Thick Paper 3	211-256 g/m ²	Yes	10	Yes	10	Yes	N/A	Yes
Japanese Postcard	64-90 g/m ²	Yes	50	Yes	10	No	N/A	No
Glossy Media	64-90 g/m ²	Yes	50	Yes	10	No	N/A	No

Media Guide: Office Workgroup Products v1.0

Recommended Media for magicolor 8650DN

Manufacturer	Brand	KM Item Number ¹	Type / Item Number	Size	Paper Weight	Paper Input Location	Printer Setting	Auto Duplex
Plain Paper for Color Output								
Konica Minolta	CF Paper	8918308	Plain Paper 1000 sheets	12" x 18"	28 lb. Bond (105 g/m ²)	Any Tray, Bypass	Thick 1	Yes
Konica Minolta	CF Paper	8918320	Plain Paper 1000 sheets	Ledger	28 lb. Bond (105 g/m ²)	Any Tray, Bypass	Thick 1	Yes
Konica Minolta	CF Paper	8918321	Plain Paper 2000 sheets	Letter	28 lb. Bond (105 g/m ²)	Any Tray, Bypass	Thick 1	Yes
Konica Minolta	CF Paper	8918309	Plain Paper 1500 sheets	12" X 18"	22 lb. Bond (80 g/m ²)	Any Tray, Bypass	Plain Paper	Yes
Konica Minolta	CF Paper	8918314	Plain Paper 1500 sheets	Ledger	22 lb. Bond (80 g/m ²)	Any Tray, Bypass	Plain Paper	Yes
Konica Minolta	CF Paper	8918315	Plain Paper 2500 sheets	Letter	22 lb. Bond (80 g/m ²)	Any Tray, Bypass	Plain Paper	Yes
International Paper	Hammermill	n/a	Color Copy Photo White	Letter	32 lb. Bond (120 g/m ²)	Any Tray, Bypass	Thick 1	Yes
International Paper	Hammermill	n/a	Color Copy	Letter	32 lb. Bond (120 g/m ²)	Any Tray, Bypass	Thick 1	Yes
International Paper	Hammermill	n/a	Color Copy Cover	Letter	60 lb. Cover (163 g/m ²)	Any Tray, Bypass	Thick 2	Yes
International Paper	Hammermill	n/a	Color Copy Cover	Letter	80 lb. Cover (216 g/m ²)	Any Tray, Bypass	Thick 3	Yes
International Paper	Hammermill	n/a	Color Copy Cover	Letter	100 lb. Cover (271 g/m ²)	Bypass	Thick 4	No
Domtar	Microprint Laser	n/a	-	Letter	24 lb. Bond (90 g/m ²)	Any Tray, Bypass	Plain Paper	Yes
Domtar	Recycled Copy	n/a	30% Post Consumer	Letter	20 lb. Bond (75 g/m ²)	Any Tray, Bypass	Plain Paper	Yes
Domtar	Microprint Color Copy	n/a	-	Letter	28 lb. Bond (105 g/m ²)	Any Tray, Bypass	Thick 1	Yes
Smart Papers	Carnival Stellar White	n/a	-	Letter	24 lb. Bond (89 g/m ²)	Any Tray, Bypass	Plain Paper	Yes
Smart Papers	Carnival White	n/a	-	Letter	24 lb. Bond (89 g/m ²)	Any Tray, Bypass	Plain Paper	Yes
Smart Papers	Synergy Bond 25% Cotton	n/a	-	Letter	24 lb. Bond (90 g/m ²)	Any Tray, Bypass	Plain Paper	Yes
Mohawk Fine Papers Inc.	Color Copy	n/a	98 Bright White	Letter	24 lb. Bond (90 g/m ²)	Any Tray, Bypass	Plain Paper	Yes

1= If item number is present, please contact Konica Minolta to order media.

n/a = Not available through Konica Minolta, contact manufacturer.



Recommended Media for magicolor 8650DN

Manufacturer	Brand	KM Item Number ¹	Type / Item Number	Size	Paper Weight	Paper Input Location	Printer Setting	Auto Duplex
Plain Paper for Monochrome Output								
International Paper	Hammermill	n/a	Tidal MP	Letter	20 lb. Bond (75 g/m ²)	Any Tray, Bypass	Plain Paper	Yes
Single-Sided Glossy								
Smart Papers	Kromekote Laser High Gloss	n/a	Coated One Side 10 pt Cover	Letter	10 pt. Cover (219 g/m ²)	Any Tray, Bypass	Thick 3	Yes
Smart Papers	Kromekote Laser High Gloss	n/a	Coated One Side 12 pt Cover	Letter	12 pt. Cover (247 g/m ²)	Any Tray, Bypass	Thick 3	Yes
Double-Sided Glossy								
Sappi	Opus Gloss	n/a	-	Letter	80 lb. Text (118 g/m ²)	Any Tray, Bypass	Thick 1	Yes
Sappi	Opus Gloss Cover	n/a	-	Letter	80 lb. Cover (216 g/m ²)	Any Tray, Bypass	Thick 3	Yes
Domtar	Microprint	n/a	Coated Laser Gloss	Letter	80 lb. Cover (216 g/m ²)	Any Tray, Bypass	Thick 3	Yes
Smart Papers	Kromekote plus C2S Cover	n/a	-	Letter	90 lb. Cover (237 g/m ²)	Any Tray, Bypass	Thick 3	Yes
Smart Papers	Krometekote Laser High Gloss	n/a	Coated Two Sides 10 pt Cover	Letter	10 pt. Cover (234 g/m ²)	Any Tray, Bypass	Thick 3	Yes
Smart Papers*	Krometekote Laser High Gloss	n/a	Coated Two Sides	Letter	90 lb. Text (133 g/m ²)	Any Tray, Bypass	Thick 1	Yes
Mohawk Fine Papers Inc.	Mohawk Color Copy	n/a	Gloss Pure White	Letter	32 lb. Bond (120 g/m ²)	Any Tray, Bypass	Thick 1	Yes
Mohawk Fine Papers Inc.	Mohawk Color Copy	n/a	Gloss Pure White	Letter	80 lb. Cover (216 g/m ²)	Any Tray, Bypass	Thick 3	Yes
Mohawk Fine Papers Inc.	Mohawk Color Copy	n/a	Gloss Pure White 100C	Letter	100 lb. Cover (270 g/m ²)	Bypass	Thick 4	No
Cover Stock								
Domtar	Microprint Laser Coated Matte Cover	n/a	Cover	Letter	80 lb. Cover (216 g/m ²)	Any Tray, Bypass	Thick 3	Yes

1= If item number is present, please contact Konica Minolta to order media.

n/a = Not available through Konica Minolta, contact manufacturer.

***Note:** Smart Papers - Krometekote Laser High Gloss 90 lb. Text (133 g/m²) cannot be used in high humidity environments.

Media Guide: Office Workgroup Products v1.0

Recommended Media for magicolor 8650DN

Manufacturer	Brand	KM Item Number ¹	Type / Item Number	Size	Paper Weight	Paper Input Location	Printer Setting	Auto Duplex
Cover Stock (continued)								
Domtar	Microprint Color Copy	n/a	Cover	Letter	80 lb. Cover (216 g/m ²)	Any Tray, Bypass	Thick 3	Yes
Domtar	Microprint Color Copy	n/a	Cover	Letter	60 lb. Cover (163 g/m ²)	Any Tray, Bypass	Thick 2	Yes
Domtar	Microprint Color Copy	n/a	Cover	Letter	65 lb. Cover (176 g/m ²)	Any Tray, Bypass	Thick 2	Yes
Smart Papers	Carnival White Cover	n/a	Cover	Letter	80 lb. Cover (216 g/m ²)	Any Tray, Bypass	Thick 3	Yes
Wausau Paper	Exact Index	n/a	-	Letter	140 lb. Index (255 g/m ²)	Any Tray, Bypass	Thick 3	Yes
Mohawk Fine Papers Inc.	Mohawk Color Copy	n/a	98 Bright White	Letter	80 lb. Cover (216 g/m ²)	Any Tray, Bypass	Thick 3	Yes
Mohawk Fine Papers Inc.	Mohawk Color Copy	n/a	98 Bright White	Letter	100 lb. Cover (270 g/m ²)	Bypass	Thick 4	No
Envelopes								
For the Future	Envelope	n/a	Preservation Wove 5789	11" x 6.75"	24 lb.	Bypass	Envelope	No
Banner Paper								
Konica Minolta	Banner Paper	76400 02409	Plain Paper 200 sheets	11.75" x 47.24"	100 lb. Text (180 g/m ²)	Bypass	Banner Mode / Thick 1	No
Labels								
Avery	4" x 6" Postcard	n/a	5889	Letter	-	Any Tray, Bypass	Thick 1	No
Avery	Color Printing Labels	n/a	6870 30 labels per sheet	Letter	-	Any Tray, Bypass	Thick 1	No
Avery	Color Printing Labels	n/a	6873 8 labels per sheet	Letter	-	Any Tray, Bypass	Thick 1	No
Avery	Color Printing Labels	n/a	6876 2 labels per sheet	Letter	-	Any Tray, Bypass	Thick 1	No
Avery	Color Printing Labels	n/a	6878 4 labels per sheet	Letter	-	Any Tray, Bypass	Thick 1	No

1= If item number is present, please contact Konica Minolta to order media.

n/a = Not available through Konica Minolta, contact manufacturer.



Recommended Media for magicolor 8650DN

Manufacturer	Brand	KM Item Number ¹	Type / Item Number	Size	Paper Weight	Paper Input Location	Printer Setting	Auto Duplex
Specialty Paper								
Techni-Print*	Photo T-Shirt Transfer	n/a	9721PO-8511	Letter	-	Any Tray, Bypass	Thick 2	No
Transparency								
3M	Color Laser	76400 00420	CG3700 9488-4	Letter	5 mil	Bypass	OHP	No

¹= If item number is present, please contact Konica Minolta to order media.

n/a = Not available through Konica Minolta, contact manufacturer.

***Note T-Shirt Transfer Paper:** This paper should not be solely used in the copier and should only be used on a limited basis (250 sheets per run maximum). Also, pay particular attention if a misfeed occurs in the fuser section of the copier. It should be removed immediately (due to odor) and then 15-25 sheets of regular (20lb bond) paper should be run to clean the fusing rollers. Also cannot be used in high humidity environments.

Media Type Specification for magicolor 8650DN

Standard Tray Capacity and Supported Media

Media Type	Weight	Tray 2	Tray 3	Tray 1 (bypass)	Auto Duplex
Plain Paper	60-90 g/m ²	500 sheets	500 sheets	150 sheets	Yes
OHP Film	-	-	-	20 sheets ¹	No
Transparency	-	150 sheets	150 sheets		Yes
Thick Paper 1	91-150 g/m ²				
Thick Paper 2	151-209 g/m ²				
Thick Paper 3	210-256 g/m ²				
Thick Paper 4	257-271 g/m ²	-	-		No
Post Cards	-	-	-		
Envelopes	-	-	-	10 sheets	
Labels	-	-	-	20 sheets	
Banner Paper	127-210 g/m ²	-	-	10 sheets	

PC-104/204 Tray Capacity and Supported Media

Media Type	Weight	Tray 4	Tray 5	Auto Duplex
Plain Paper	60-90 g/m ²	500 sheets	500 sheets	Yes
Thick Paper 1	91-150 g/m ²	150 sheets	150 sheets	Yes
Thick Paper 2	151-209 g/m ²			Yes
Thick Paper 3	210-256 g/m ²			Yes

PC-405 Tray Capacity and Supported Media

Media Type	Weight	LCT Tray	Auto Duplex
Plain Paper	60-90 g/m ²	2,500 sheets	Yes
Thick Paper 1	91-150 g/m ²	1,000 sheets	Yes
Thick Paper 2	151-209 g/m ²		Yes
Thick Paper 3	210-256 g/m ²		Yes

Important Notes:

1: Monochrome print only.

Automatic Duplex:

Only for plain paper weighing 64-90 g/m² or thick paper weighing 91-256 g/m² are reliably fed.



CONNECT_

COMMUNICATE_

CONTROL_



Monochrome Office Workgroup Products



Media Guide: Office Workgroup Products v1.0

Recommended Media for bizhub 360/420/500

Manufacturer	Brand	KM Item Number ¹	Type / Item Number	Size	Paper Weight	Paper Input Location	MFP Setting	Auto Duplex
Plain Paper								
International Paper	Hammermill Tidal MP	n/a	162008	Letter	20 lb. Bond (75 g/m ²)	Any Tray, Bypass	Plain Paper	Yes
Xerox	4024 DP	n/a	3R727	Letter	24 lb. Bond (90 g/m ²)	Any Tray, Bypass	Plain Paper	Yes
Recycled Paper								
Weyerhaeuser	Recycled Laser Copy	n/a	-	Letter	20 lb. Bond (75 g/m ²)	Any Tray, Bypass	Plain Paper	Yes
International Paper	Great White MultiUse 20	n/a	92 Brightness	Letter	20 lb. Bond (75 g/m ²)	Any Tray, Bypass	Plain Paper	Yes
Transparency								
Hewlett Packard	Transparency	n/a	92296T	Letter	-	Bypass	OHP	No
Label Sheets								
Avery	White Mailing Labels	n/a	5160	Letter	-	Bypass	Thick Paper	No
Thick Paper								
International Paper	Hammermill Laser Print	n/a	-	Letter	32 lb. Bond (120 g/m ²)	Bypass	Thick Paper	No

¹= If item number is present, please contact Konica Minolta to order media.

n/a = Not available through Konica Minolta, contact manufacturer.

Note: Thick paper, envelopes and label sheets can only be fed through the 1st tray or the bypass tray.



Paper Type Specifications for bizhub 360/420/500

Standard Supported Media

Media Type	Weight	Tray 1 / Tray 2	Multiple Bypass	Auto Duplex
Plain Paper	60-90 g/m ²	Supported	Supported	Yes
Recycled Paper	60-90 g/m ²			
Thick Paper	91-105 g/m ²			
Thick Paper	106-210 g/m ²	Not Supported		No
Thin Paper	50-59 g/m ²			
Label Paper ¹	-			
OHP film	-			
Envelopes	-			

Important Notes:

1: Label paper is loaded and fed one sheet at a time.

PC-202 Supported Media

Media Type	Weight	Tray 3 / Tray 4	Auto Duplex
Plain Paper	56-90 g/m ²	Supported	Yes

PC-402 Supported Media

Media Type	Weight	LCT Tray	Auto Duplex
Plain Paper	56-90 g/m ²	Supported	Yes

LU-201 Supported Media

Media Type	Weight	LCT Tray	Auto Duplex
Plain Paper	60-105 g/m ²	Supported	Yes
Recycled Paper	60-105 g/m ²	Supported	Yes

Media Guide: Office Workgroup Products v1.0

Recommended Media for bizhub 600/750

Manufacturer	Brand	KM Item Number ¹	Type / Item Number	Size	Paper Weight	Paper Input Location	MFP Setting	Auto Duplex
Plain Paper								
International Paper	Hammermill Tidal MP	n/a	162008	Letter	20 lb. Bond (75 g/m ²)	Any Tray, Bypass	Plain Paper	Yes
Recycled Paper								
Weyerhaeuser	Recycled Laser Copy	n/a	-	Letter	20 lb. Bond (75 g/m ²)	Any Tray, Bypass	Plain Paper	Yes
Transparency								
Hewlett Packard	Transparency	n/a	92296T	Letter	-	Bypass	OHP	No
Labels								
Avery	White Mailing Labels	n/a	5160	Letter	-	Any Tray, Bypass	Labels	No
Avery	White Mailing Labels	n/a	5352	Letter	-	Any Tray, Bypass	Labels	No
Thin Paper								
Domtar	-	n/a	-	Letter	16 lb. Bond (59 g/m ²)	Any Tray, Bypass	Plain Paper	No
Thick Paper								
International Paper	Hammermill Laser Print	n/a	-	Letter	32 lb. Bond (120 g/m ²)	Any Tray, Bypass	Plain Paper	No

¹= If item number is present, please contact Konica Minolta to order media.

n/a = Not available through Konica Minolta, contact manufacturer.



Media Type Specification for bizhub 600/750

Standard Supported Media

Media Type	Weight	All Trays	Multiple Bypass	Auto Duplex
Plain Paper	60-90 g/m ²	Supported	Supported	Yes
Recycled Paper	60-90 g/m ²			
Thin Paper	50-59 g/m ²			
Thick Paper	91-200 g/m ²			
Label Paper ¹	-	Not Supported		No
OHP Film	-			
Transparency	-			
Envelopes	-			
Tab Paper	-			

Important Notes:

1: Label paper is loaded and fed one sheet at a time.

Media Guide: Office Workgroup Products v1.0

Recommended Media for PagePro 1380MF/1390MF

Manufacturer	Brand	KM Item Number ¹	Type / Item Number	Size	Paper Weight	Paper Input Location	Printer Setting	Auto Duplex
Plain paper								
International Paper	Hammermill Laser Print	n/a	10460-4	Letter	24 lb. Bond (90 g/m ²)	Multipurpose, Manual Feed	Plain Paper	Yes
Xerox	4024 DP	n/a	3R727	Letter	24 lb. Bond (90 g/m ²)	Multipurpose, Manual Feed	Plain Paper	Yes
Envelopes								
Columbian	Recycled	n/a	COR02	#10	24 lb.	Manual Feed	Envelope	No
Columbian	Laser Quality	n/a	CO130	#10	24 lb.	Manual Feed	Envelope	No
Transparency								
Konica Minolta	Q-Media	1710463-001	Transparency 50 sheets	Letter	-	Manual Feed	Trans.	No
Konica Minolta	Q-Media	1710463-002	Transparency 5 sheets	Letter	-	Manual Feed	Trans.	No
Label Sheets								
Avery	Laser	n/a	Mailing Labels 5260	Letter	0.16 mm	Manual Feed	Label	No

¹= If item number is present, please contact Konica Minolta to order media.

n/a = Not available through Konica Minolta, contact manufacturer.

Media Type Specification for PagePro 1380MF/1390MF

Media Type	Specifications	Setting
Normal paper	16–24 lb (60–90 g/m ²)	Plain Paper
Recycled paper	16–24 lb (60–90 g/m ²)	Plain Paper
Envelopes	25–43 lb bond* (91–163 g/m ²)	Envelope
Labels (sheet)	Supported*	Thick Paper
Letterhead	16–24 lb (60–90 g/m ²)	Plain Paper
Postcards	16–43 lb (60–163 g/m ²)	Thick Paper
Thick stock	25–43 lb bond** (91–163 g/m ²)	Thick Paper
Transparency	Konica Minolta Q-Media	Transparency

* Must be certified for laser printers and capable of withstanding fusing temperature of 401° F (205° C)

** 43 lb bond is also referred to as 90 lb index



Recommended Media for pagepro 4650EN/5650EN & bizhub 40P/X

Manufacturer	Brand	KM Item Number ¹	Type / Item Number	Size	Paper Weight	Paper Input Location	Printer Setting	Auto Duplex
Plain paper								
International Paper	Hammermill For e MP	n/a	101279	Letter	24 lb. Bond (90 g/m ²)	Multipurpose, Manual Feed	Plain Paper	Yes
International Paper	Hammermill Photo White	n/a	10246-7	Letter	28 lb. Bond (104 g/m ²)	Multipurpose, Manual Feed	Plain Paper	Yes
International Paper	Hammermill Tidal MP	n/a	16200-8	Letter	20 lb. Bond (75 g/m ²)	Multipurpose, Manual Feed	Plain Paper	Yes
Xerox	4200 Business Multipurpose	n/a	-	Letter	20 lb. Bond (75 g/m ²)	Multipurpose, Manual Feed	Plain Paper	Yes
Boise	Cascade	n/a	X9000	Letter	20 lb. Bond (75 g/m ²)	Multipurpose, Manual Feed	Plain Paper	Yes
Domtar	Microprint Digital Publishing Text (DPT)	n/a	-	Letter	18 lb. Bond (67 g/m ²)	Multipurpose, Manual Feed	Plain Paper	Yes
Thick Stock								
Xerox	65 lb. Cover Stock	n/a	3R3041	Letter	65 lb. Bond (175 g/m ²)	Multipurpose, Manual Feed	Thick-1	Yes
Neenah	Classic Crest	n/a	-	Letter	80 lb. Cover (218 g/m ²)	Multipurpose, Manual Feed	Thick-2	Yes
Oxford	White Recycled Index Cards	n/a	40801	3" x 5"	-	Multipurpose, Manual Feed	Thick-1	Yes
Envelopes								
Columbian	Recycled	n/a	COR02	#10	24 lb.	Manual Feed	Envelope	No
Vanguard	COM-10	n/a	6470	#10	20 lb.	Manual Feed	Envelope	No
Monroe	MONARCH	n/a		#10		Manual Feed	Envelope	No
Williamhouse	COM-10	n/a	647282	#10	24 lb.	Manual Feed	Envelope	No
Transparency								
3M	Trans. Film	n/a	Color Laser CG3300	Letter	.09mm	Bypass	OHP	No
Labels								
Avery	Mailing Labels	n/a	5160	Letter	-	Multipurpose	Label	No
Banner Paper								
Konica Minolta	Q-Media	1710637-001	Banner	8.5" x 40"	65 lb. Cover (176 g/m ²)	Multipurpose	Banner mode	No

Media Type Specification for pagepro 4650EN

Standard Tray Capacity and Supported Media

Media Type	Weight	Tray 1	Tray 2	Auto Duplex ¹
Plain Paper	60-105 g/m ²	150 sheets	550 sheets	Yes
Recycled Paper	60-105 g/m ²	150 sheets	550 sheets	
Thick Paper 1	106-159 g/m ²	60 sheets	160 sheets	
Thick Paper 2	160-216 g/m ²	60 sheets	160 sheets	
OHP Film Transparency	-	100 sheets	100 sheets	No
Post Cards	-	55 sheets	200 sheets	
Labels	-	100 sheets	290 sheets	
Banner Paper	127-210 g/m ²	1 sheet	-	
Envelope	-	15 sheets	80 sheets	

Media Type Specification for pagepro 5650EN & bizhub 40P/X

Standard Tray Capacity and Supported Media

Media Type	Weight	Tray 1	Tray 2	Auto Duplex ¹
Plain Paper	68-105 g/m ²	150 sheets	550 sheets	Yes
Recycled Paper	68-105 g/m ²	150 sheets	550 sheets	
Thick Paper 1	106-159 g/m ²	60 sheets	160 sheets	
Thick Paper 2	160-216 g/m ²	60 sheets	160 sheets	
Thick Paper 3	106-216 g/m ²	60 sheets	160 sheets	
Thin Paper	64-67 g/m ²	Supported	Supported	
OHP Film Transparency	-	100 sheets	100 sheets	No
Post Cards	-	55 sheets	200 sheets	
Labels	-	100 sheets	290 sheets	
Banner Paper	127-210 g/m ²	1 sheet	-	
Envelope	-	15 sheets	80 sheets	

Important Notes:

1: Only if duplex option is installed.



Recommended Media for PagePro 9100N

Manufacturer	Brand	KM Item Number ¹	Type / Item Number	Size	Paper Weight	Paper Input Location	Printer Setting	Auto Duplex
Plain paper								
International Paper	Hammermill Laser Print	n/a	10460-4	Letter	24 lb. Bond (90 g/m ²)	Multipurpose, Standard Tray	Plain Paper	Yes
Xerox	4024 DP	n/a	3R727	Letter	24 lb. Bond (90 g/m ²)	Multipurpose, Standard Tray	Plain Paper	Yes
Thick Stock								
Xerox	65 lb. Cover Stock	n/a	3R3041	Letter	65 lb. Bond (175 g/m ²)	Multipurpose, Standard Tray	Thick	Yes
Envelopes								
Columbian	Recycled	n/a	COR02	#10	24 lb.	Multipurpose	Envelope	No
Columbian	Laser Quality	n/a	CO130	#10	24 lb.	Multipurpose	Envelope	No
Transparency								
Konica Minolta	Q-Media	1710463-001	Transparency 50 sheets	Letter	-	Manual Feed	Trans.	No
Konica Minolta	Q-Media	1710463-002	Transparency 5 sheets	Letter	-	Manual Feed	Trans.	No
Labels								
Avery	Laser	n/a	Mailing Labels 5260	Letter	0.16 mm	Multipurpose	Label	No

¹= If item number is present, please contact Konica Minolta to order media.

n/a = Not available through Konica Minolta, contact manufacturer.

Media Type Specification for PagePro 9100N

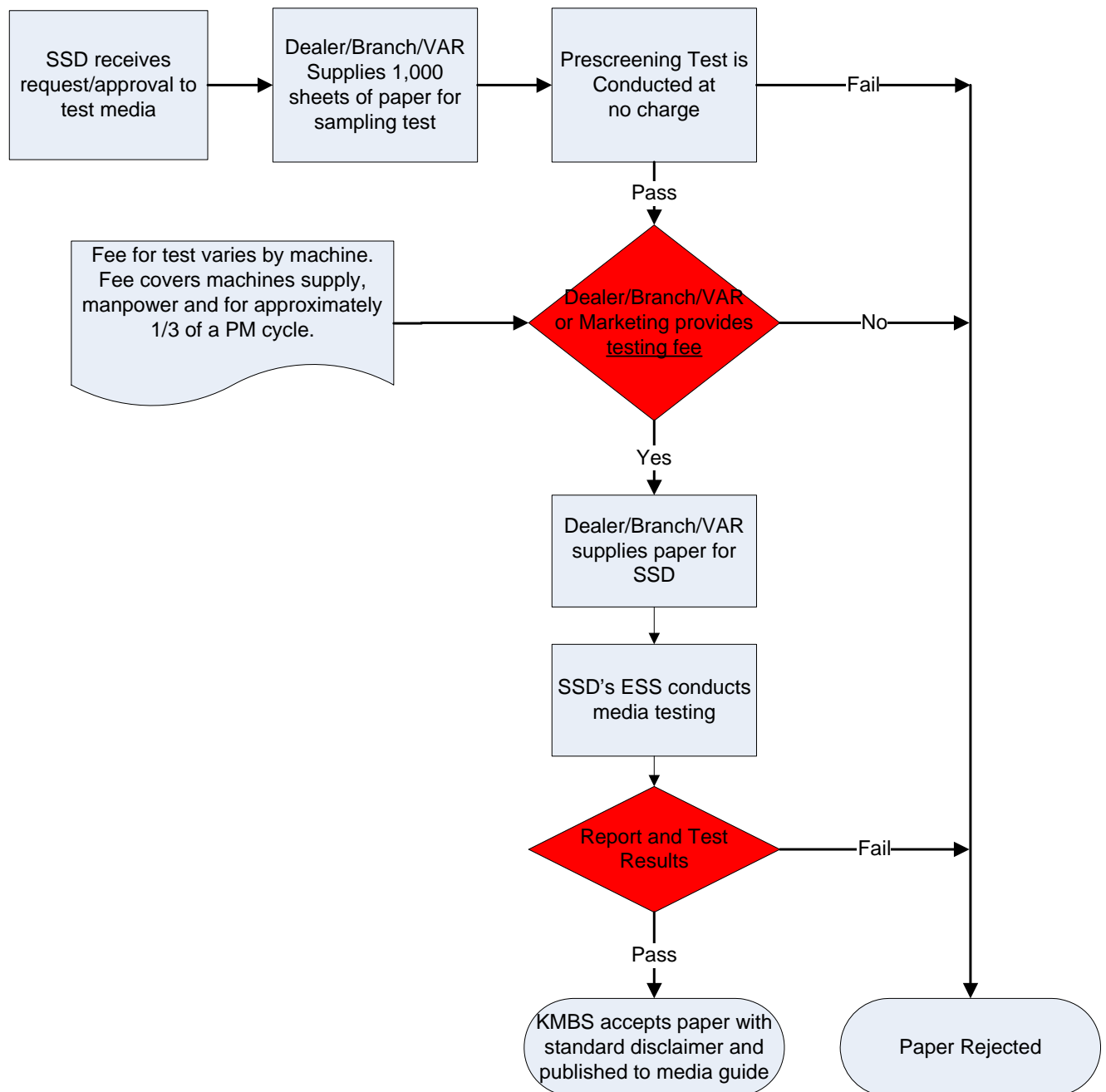
Media Type	Specifications	Setting
Normal paper	16 - 24 lb. Bond (60 - 90 g/m ²)	Plain Paper
Thick Stock	24 - 90 lb. Index (90 - 163 g/m ²)	Thick Paper

Media Testing and Support

Konica Minolta Business Solutions U.S.A. will conduct media testing for MFP and Printer products at a cost to the dealer, branch or VAR.

How to request media testing:

Talk to your technical support manager to place a service ticket with Technical Support/SSD to start the process.





References

These references were used to create this guide:

Konica Minolta Business Solutions, U.S.A.,

Specification and Installation Guides:

- bizhub 500, 420, 360, Version 7
- bizhub 750, 600 Version 2
- bizhub C353, C253, C203 Version 6
- bizhub C650, Version 4

Field Service Guides:

- bizhub 500, 420, 360, Version 2.0, January 2007
- bizhub 750, 600, Version 2.0, May 2006
- bizhub C353, C253, C203, Version 4.0, August 2007
- bizhub C650, C550, C451, Version 2.0, November 2007
- magicolor 4650EN, Version 1.0, November 2007
- pagepro 4650EN/5650EN, Version 1.0, November 2007

Approved Media Lists:

- magicolor 4650EN, December 2007
- pagepro 4650EN/5650EN, December 2007

Printer Tech Guides:

- magicolor 4650EN, December 2007
- pagepro 4650EN/5650EN, December 2007

Legacy Konica Minolta Printing Solutions, U.S.A.,

Approved Media Lists:

- magicolor 2480MF/2590MF, July 2007
- magicolor 24xx, 25xx series, July 2007
- magicolor 5500 series, May 2007
- magicolor 7450, May 2007
- pagepro 1380MF
- pagepro 1390MF
- pagepro 9100N, February 2003

Printer Tech Guides:

- magicolor 2480MF/2490MF
- magicolor 2500W/2530DL
- magicolor 2550EN/DN
- magicolor 7450
- pagepro 1300MF Series

International Paper Knowledge Center, *Print Preparation > Paper > Characteristics*,
viewed 10 January 2008,
<<http://glossary.ippaper.com/default.asp?req=knowledge/article/230&catitemid=36>>.

International Paper Knowledge Center, *Print Preparation > Paper > Storage*,
viewed 10 January 2008,
<<http://glossary.ippaper.com/default.asp?req=knowledge/article/368&catitemid=47>>.

Konica Minolta Business Solutions, U.S.A., Paper Weights,
Viewed 10 January 2008,
< <http://printer.konicaminolta.com/products/paperWeights.asp> >



KONICA MINOLTA

KONICA MINOLTA BUSINESS SOLUTIONS U.S.A., INC.

100 Williams Drive, Ramsey, NJ 07446

www.kmbs.konicaminolta.us