

**Attention:**  
Price change per  
February 1, 2008.  
For actual prices, see  
our Price List or the  
Internet.

# **EZCE Touchpanel™**

**THE MOST SENSIBLE OPEN  
PLATFORM PLC TOUCHPANEL**





# **EZCE Touchpanel™**

**The Most SENSIBLE Open Platform PLC Panel  
Combining the Ease of Use of the Original EZTouch  
with the Most SENSIBLE CE Touchscreen Computer**



**Made in  
America**



**Starting From  
€699**

**Identical Footprint as  
EZTouch and EZPanel**

**EZ as 1-2-3  
Programming Software  
compatible with  
EZTouch, EZPanel and  
EZCE Touchpanel brands**

**Programming  
Software  
€99**

Designed and built in USA by  
**AVG**  
[www.avg.net](http://www.avg.net)

## **EZTouch plus these additional features**

### **Software**

- **Adobe Acrobat PDF Viewer**
- **Microsoft Excel Viewer**
- **Microsoft Power Point Viewer**
- **Microsoft Word Viewer**
- **MPEG (Video) Viewer**
- **Microsoft Word Pad Text Editor**
- **Internet Explorer**
- **Microsoft Terminal Services**
- **FTP Server for sending to/receiving files from a Remote Location**

### **Hardware**

- **AMD Alchemy 333 MHz CPU**
- **32 MB Flash, 64MB RAM**
- **Compact Flash Slot**
- **10/100 Base-T Ethernet**
- **One RS232 Port, One RS232/422/485 Port, One USB Host Port**
- **Network and I/O Card Option**
- **Light weight / Low Power**
- **Complete NEMA 4, 4X Industrial Ratings**

# EZCE Touchpanel™



## What is EZCE Touchpanel?

EZCE Touchpanel is an open platform PLC Touchpanel that combines the best assets of the original EZTouch and EZPanel Enhanced, which is its ease of use for both operators and programmers with the advanced functionality of a disk-less industrial computer running WindowsCE. It is available in all the eight different screen models of EZPanel and has the same footprint as the original EZTouch and EZPanel Enhanced. Programs developed on either the original EZTouch or the EZPanel Enhanced can be seamlessly transferred to the EZCE Touchpanel. Programs developed on EZCE Touchpanel can also be transferred to EZPanel Enhanced. In fact the EZPanel Enhanced Programming software is common to all these models.

## What does it have?

### Key Features:

- Incredible 3-D graphical objects: pushbuttons, numeric entry, meters, line graphs, PID faceplates, etc. All are high-speed, vector-based objects with amazing scalability.
- 128 colors for use in objects and graphics
- Display text in up to nine different languages (user-selected by a push of a button!)
- Built-in Symbol Factory with over 4,000 symbols
- Screen and object password protection (eight user-defined levels)
- Unmatched alarm capability with history, count and details
- Recipe downloads to the PLC: 20 values into 20 registers (fixed or variable)
- Floating-point numbers to and from PLC
- Built-in clock and calendar
- Forty-character tag names mapped to PLC addresses
- Bitmaps can be sized on the screen in the EZPanel/EZCE Touchpanel Software
- Import/Export tags to/from Excel or CSV files - Export messages to Excel or CSV file
- Export alarms to Excel or CSV file
- Multi-state Bitmap object (bit or word selectable)
- Multi-state Indicator/Message object (bit or word selectable) allows up to four embedded data variables in messages
- Bitmap Button object
- Scalable meters and bar graphs
- Floating point support for Meters, Bar Graphs, PID and Line Graphs

## PLC Drivers Supported

- Allen-Bradley DF1 Half and Full Duplex (PLC-5, SLC 500, MicroLogix 1000, 1200 and 1500)
- DH485/AIC/AIC+ for MicroLogix 1000, 1200, 1500, SLC500, 5/01, /02, /03
- Aromat Mewtocol COM
- Control Techniques - Unidrive 2-wire, 4-wire (binary)
- Control Technology Corp. (CTC) - CTC2600, 2700 and 5100 (CTC Binary)
- EZPLC
- GE Fanuc SNPX (90/30, 90/70)
- Idec Computer Link
- Omron Host Link (C200 and C500)
- All Mitsubishi FX Series
- Modicon MODBUS RTU
- Siemens S7 MPI Adapter series PLCs
- Square D Symax - 300 Series CPU, 400 Series CPU (Symax)
- Texas Instruments - TI5x5 Series, TI505, TI545-1102, TI545-1104
- All AutomationDirect DirectLOGICPLCs

## Windows CE Features:

### Hardware

- AMD Alchemy 333 MHz 32Bit Processor
- 32MB Flash and 64MB RAM built-in
- Compact Flash slot
- One 10/100 Base-T Ethernet port
- USB Host port
- 2 Serial ports, one RS232, second RS232/422/485
- 4 wire Analog resistive touch screen
- Network card option for future expansion
- Mechanical/hardware interface to build EZPLC and EZI/O in the same housing
- Choice of 8 displays

### Software

- Windows CE.net® 4.2 Core preloaded in standard model with Compact Framework
- Windows CE.net® 4.2 Professional Plus preloaded in Enhanced model, with Internet Explorer and Viewer software
- SDK for Software Development

## Connect to One of these Networks

- Allen-Bradley Data Highway Plus or Remote I/O
- Ethernet/IP
- Ethernet DF1 Protocol
- DeviceNet
- Profibus DP
- MODBUS Plus
- MODBUS TCP/IP
- CCLink
- GE SRTP



## Where does it make sense?

If you need to give your machine operators access to the Microsoft world of CE, that is the ability to view files such as Adobe Acrobat PDF, Excel, Word, MPEG (Video), Word Pad text editor, as well as give access to Internet or Intranet, EZCE Touchpanel is a good choice. The user can also write their own programs in Visual Basic or C++ along with the EZPanel application running on the unit. There are pros and cons of using a dedicated HMI panel vs an open platform panel as described on the next page, but the beauty of the EZAutomation's unique and exclusive approach is that you develop your application using the same programming software and can run it on either panel. EZ!

# What is the Difference between EZPanel Enhanced and EZCE Touchpanel and How do I Choose between the two?

Windows world has its own advantages as well as perils. On one hand, the openness of the Windows platform allows great connectivity between the Touchpanel and the rest of the world, from simple features like connection to any printer, to full internet browsing capability. On the other hand, the same openness may result in decreased system reliability. Now you have opened the gates to all the possible mischief like viruses etc. In addition, Windows platform is inherently a memory hog as well as slower as compared to a dedicated HMI. The good news from EZAutomation is that we make both options available to you, and you as the customer can make the ultimate decision which way to go. Here is a summary for you to consider:

## EZPanel Enhanced



## EZCE Touchpanel



### Differences:

- |  |  |
|--|--|
| <ul style="list-style-type: none"> <li>• Dedicated 32 bit 40 MHz Coldfire processor</li> <li>• Dedicated operating system needs only 512 KB, and is really fast</li> <li>• Faster Response time for touch input, typical 0.5 to 0.75 seconds</li> <li>• Not subject to hardware or software tampering</li> <li>• No boot-up, EZier to set-up</li> <li>• Trending of data, only 2M memory.</li> <li>• Low end print functions</li> <li>• No Internet Browsers</li> <li>• No File Viewers</li> <li>• Lower Cost</li> </ul> | <ul style="list-style-type: none"> <li>• Windows CE 32 bit 333 MHz Alchemy Processor</li> <li>• Windows CE OS, 16-22 MB, a little slower</li> <li>• A little slower response time for touch input, 1 to 1.5 seconds</li> <li>• It is a computer, even though restricted.</li> <li>• Slightly more involved start-up</li> <li>• Bigger memory for data trending and storage, expandable to 256 MB.</li> <li>• Windows type Print options</li> <li>• Internet Browsers</li> <li>• File Viewers such as Adobe Acrobat PDF Viewer, Microsoft Excel Viewer, Microsoft Word Viewer, MPEG (Video) Viewer, Microsoft Word Pad Text Editor, Internet Explorer and more...</li> <li>• €300 to €400 less depending upon the model.</li> </ul> |
|--|--|

### Similarities:

- Programming Software: Same, EZ as 1-2-3, EZPanel Enhanced Editor
- HMI Objects/Operators: Same as EZPanel Enhanced
- Footprint: Has same footprint as EZPanel Enhanced

Model	EZPanel Enhanced	EZCE Touchpanel
6" White on Blue	€399	€699
8" TFT	€1,299	€1,599
10" TFT	€1,649	€1,899

# **EZCE Touchpanel™**

## **EZ Interoperability between EZTouch, EZPanel Enhanced and EZCE Touchpanel, unique to EZAutomation!**

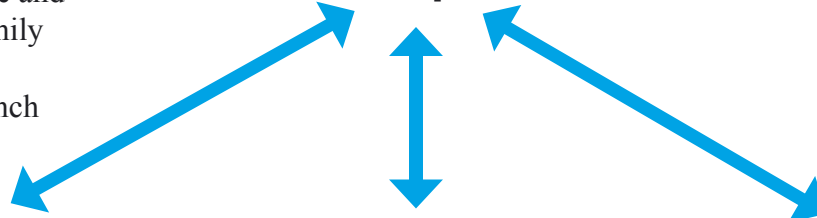
**Application developed on any one of these platforms will run on others**

The EZCE Touchpanel is the only HMI available that can run an application developed on a dedicated HMI like EZTouch or EZPanel Enhanced to run on this Windows CE open platform panel. Usually you have to convert or translate your dedicated HMI application, if at all possible, to the new panel such as migrating from QuickPanel to QuickPanel View or Panelview standard to Panelview plus. It takes hours to translate and make sure that all operators have been properly converted. Not so with the EZ family. Since we have had full control of the hardware, firmware and software of the EZ family of PLC Touchpanels, interoperability is a cinch for us!



**EZPanel Enhanced/  
EZCE Touchpanel EDITOR**

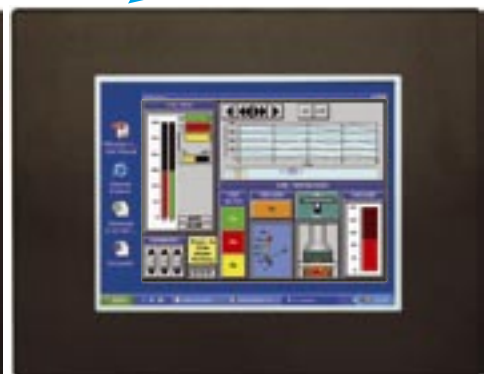
**There is no  
“Program Conversion”!  
No such thing with  
AB’s Panelview Plus or  
GE’s QuickPanel View**



**The Original EZTouch**



**EZPanel Enhanced**



**EZCE Touchpanel**

# 8 Models to Choose From Starting as Low as

- Adobe Acrobat PDF Viewer
- Microsoft Excel Viewer
- Microsoft Word Viewer
- Microsoft Wordpad Text Editor
- MPEG Video player
- Compact Flash Slot
- Internet Explorer
- 32MB Flash memory built-in



NOW THIS IS INCREDIBLE!



€699

**6" White on Blue, QVGA**  
EZC-S6W-S (Standard): €699  
EZC-S6W-E (Enhanced): €799



€799

**6" Monochrome, QVGA**  
EZC-S6M-S (Standard): €799  
EZC-S6M-E (Enhanced): €899



€899

**6" STN Color, QVGA**  
EZC-S6C-S (Standard): €899  
EZC-S6C-E (Enhanced): €999



€1299

**6" TFT Color, QVGA**  
EZC-T6C-S (Standard): €1299  
EZC-T6C-E (Enhanced): €1399



€1399

**8" STN Color, VGA**  
EZC-S8C-S (Standard): €1399  
EZC-S8C-E (Enhanced): €1499



€1599

**8" TFT Color, VGA**  
EZC-T8C-S (Standard): €1599  
EZC-T8C-E (Enhanced): €1699



€1899

**10" TFT Color, VGA**  
EZC-T10C-S (Standard): €1899  
EZC-T10C-E (Enhanced): €1999



€2699

**15" TFT Color, VGA**  
EZC-T15C-S (Standard): €2699  
EZC-T15C-E (Enhanced): €2799



# The Most SENSIBLE CE Touchpanels Available!



The EZCE Touchpanel line with all the additional features, has the same EZ to use programming software across all panels, all eight models. A wide variety of serial drivers is available and we continue to add more every quarter. We also have a broad range of units with pre-installed modules to connect to the most popular field networks, legacy as well as the latest.

**Expanded wide variety of models, sizes and PLC drivers**

**Check out all the different EZCE Touchpanel models and specifications available to you starting on page 11-28.**

Starting at  
**€699**

## Drivers Supported

- Allen-Bradley DF1 Half and Full Duplex (PLC-5, SLC 500, MicroLogix 1000, 1200 and 1500)
- DH485/AIC/AIC+ for MicroLogix 1000, 1200, 1500, SLC500, 5/01, /02, /03
- Aromat Mewtocol COM
- Control Techniques - Unidrive 2-wire, 4-wire (binary)
- Control Technology Corp. (CTC) - CTC2600, 2700 and 5100 (CTC Binary)
- EZPLC
- GE Fanuc SNPX (90/30, 90/70)
- Idec Computer Link
- Omron Host Link (C200 and C500)
- All Mitsubishi FX Series
- Modicon MODBUS RTU
- Siemens S7 MPI Adapter series PLCs
- Square D Symax - 300 Series CPU, 400 Series CPU (Symax)
- Texas Instruments - TI5x5 Series, TI505, TI545-1102, TI545-1104
- All AutomationDirect DirectLOGICPLCs

## Connect to One of these Networks

- Allen-Bradley Data Highway Plus or Remote I/O
- Ethernet/IP
- Ethernet DF1 Protocol
- DeviceNet
- Profibus DP
- MODBUS Plus
- MODBUS TCP/IP
- CCLink
- GE SRTP

## Easy to Program, Easy to Operate

**You can create a basic screen in about 10 minutes.**

We know you have better things to do than attend a class on how to configure a touch panel! EZCE Touchpanel is so intuitive that in a few minutes you should be able to create great screens on your own.

EZCE Touchpanel programming software lets you:

- Click, drop and edit objects on the screen
- Copy and paste screens from and to other projects
- Scale objects to virtually any size with little or no distortion
- Enter data with a pop-up keypad
- Configure panels for up to nine languages
- Use the included Symbol Factory library of over 4,000 factory objects, or import 128-color bitmaps



**Download the software demo to see for yourself:**  
[www.EZAutomation.eu.com](http://www.EZAutomation.eu.com)

**EZCE  
Touchpanel  
Programming  
Software**

**€99**





# EZCE Touchpanel™

## Designed from the ground up to simply be the EZiest to program and use

### You do not have to spend \$1300 for a 3 day course to learn how to program an Operator Panel

EZTouch has widely been recognized as the EZiest to program software in the industry. More than 10,000 companies and over 20,000 Automation Control Engineers have used our software without having the need to attend even a one hour tutorial. In designing this product to be sold through the direct business channel without any local hand holding or training classes, we had to design the software to be so intuitive that even a first time user can get it up and running in a couple of hours without opening the software manual.

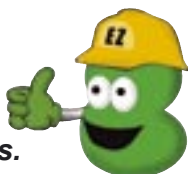
### EZPanel/CE Touchpanel Editor - EZ as 1-2-3

Easy-to-use windows based software makes panel configuration and testing simple. Edit and debug faster than ever with our unique online programming feature.

Add \$20 for Programming Cable and assume a professional engineer costing \$50/hr for 2 hours.



Free for existing EZTouch users!

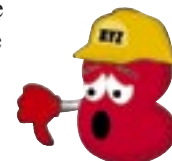


Total Investment **\$219** EZ as 1-2-3!

### RSView Studio Software

“This course is designed to provide students with the skills needed to create and configure an RSView ME(Machine Edition) project for Machine level and small-process control”

Add \$100 for Programming Cable and \$1300 for 3 day course (RS-RSVMETRG) @ \$50/hr minimum



Software is a pain!

Total Investment more than **\$3200** to learn programming for “small process control” Wonder what it would be for a large process control!

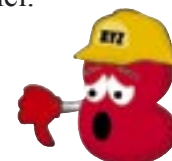
## Communication Capability to Industrial Network

The EZCE Touchpanel has the broadest communication capability of any other Operator Panel. Here is what we connect to:

- Allen-Bradley Data Highway Plus or Remote I/O
- Controlnet
- Ethernet/IP
- Ethernet DF1 Protocol
- DeviceNet
- Profibus DP
- MODBUS Plus
- MODBUS TCP/IP
- CCLink
- GE SRTP



**AB Versaview can communicate only to DH+, Remote I/O and Controlnet**



Save Me From Other Networks!

**GE Quickpanel View can communicate only to Genius I/O, DeviceNet and Profibus**





# EZCE Touchpanel™

## Lets compare! Which Touchpanel is best for your PLC?

	EZAutomation EZCE TouchPanel	Allen Bradley VersaView 6182H-7TLH4D	GE QuickPanel View IC754VSL06CTD
Screen Type	5.7" TFT	6.5" TFT	5.7" TFT
Resolution	320x240	640x480	320x240
Built-In Flash Memory	32 MB	32 MB	1 CF slot
DRAM	64 MB	64 MB	32MB
Ethernet	Yes	Yes	Yes
Trending	Yes	Yes	Yes
3D Pre-Built Objects	Yes	Yes	Yes
Power Consumption	12 Watts	17 Watts	24 Watts
On-Line Programming	Yes	No	No
Ease of Programming	Legendary EZ	3-day course @ \$3200 Suggested by AB to get started	Not so easy
SDK for Visual Basic & C++	Yes	Yes	Yes
Microsoft Viewers	Yes	Yes	Yes
Communication Expansion	DH+, RIO, MB+, CCLink, Ethernet IP, MB TCP/IP GE SRTP, Profibus, DeviceNet, Control Net	DH+, RIO, ControlNet only	Genius IO, DeviceNet, Profibus only
Price	<b>\$1399</b>	<b>\$2525</b>	<b>\$1995</b>



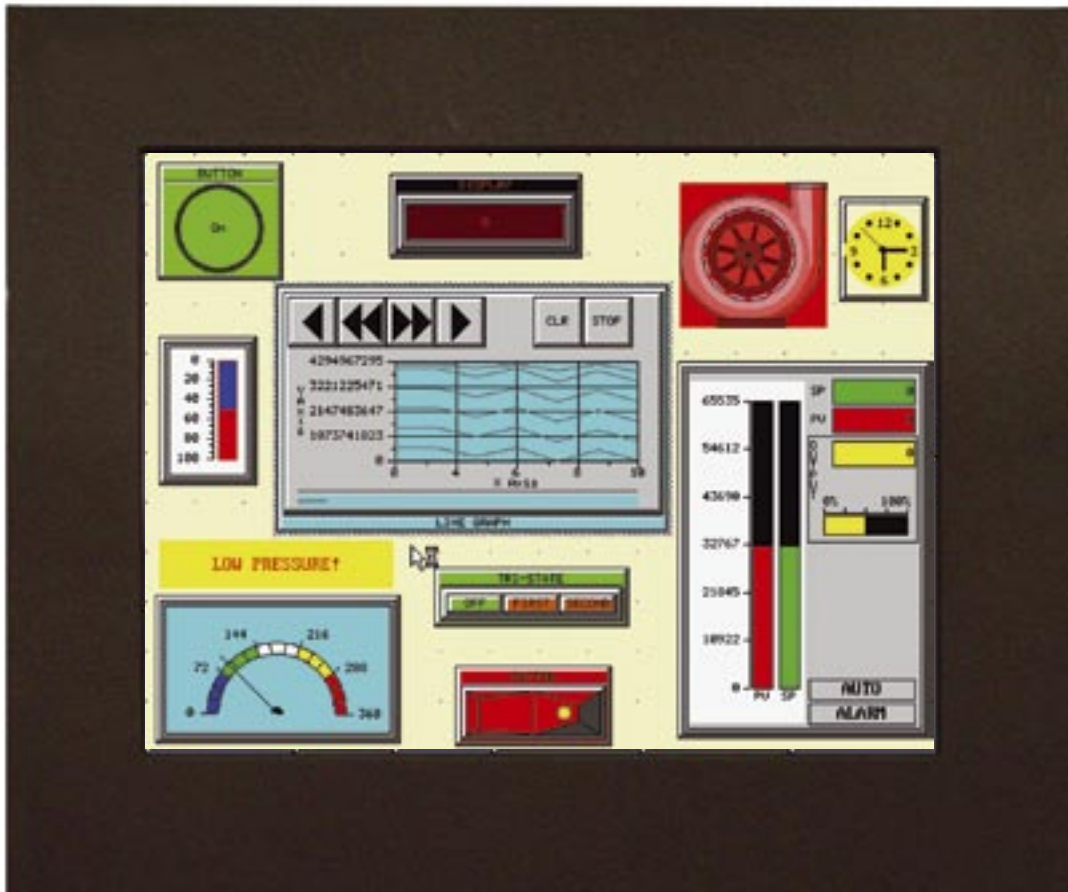
**Made in America**



	EZCETouchpanel EZC-T10C-E	AB Versaview 6182H-10TLH4D	GE Quickpanelview IC754VSL12D	Zycom 3300T Series 3310-0011020016503
ScreenType	10.4" TFT	10.4" TFT	12.1" TFT	10.4" TFT
Resolution	640x480	640x480	800x600	640x480
Power consumption	18 W	27 W	48 W	NA
Built-in Flash memory	32MB	32MB	None	No, 64MB on Compact Flash
RAM	64MB	64MB	32MB	128MB
Ethernet	10/100BaseT	10/100BaseT	10/100BaseT	10/100BaseT
Processor	333MHz AMD	650MHz Celeron	NA	300MHz
Trending	Real time & Historical	Historical	Historical	NA
Prebuilt 3-D objects	Yes	Yes	Yes	Yes
Ease of programming	Legendary EZ	3-day course @ \$3200 Suggested by AB to get started	Not so easy	Not so easy
On-Line programming	Yes	No	No	No
Microsoft Viewers	Yes	Yes	Yes	NA
Communication expansion	DH+, RIO, MB+, CCLink, Ethernet IP, MB TCP/IP GE SRTP, Profibus, DeviceNet, Control Net	DH+, RIO, ControlNet only	Genius IO, DeviceNet, Profibus only	NA
Number of Tags	Unlimited	Unlimited	Unlimited	Limited to 1500
Application compatibility between dedicated HMI & CE	Yes; Same software	Limited; Totally different software	Limited; Totally different software	None
Price	<b>\$1999</b>	<b>\$3390</b>	<b>\$3895</b>	<b>\$2995</b>
Software	<b>\$99</b>	<b>\$613</b>		
Cable	<b>\$20</b>	<b>\$100</b>	NA	NA
Total Price	<b>\$2118</b>	<b>\$4103</b>		

EZCE Touchpanel

# EZCE Touchpanels are Easy to Operate



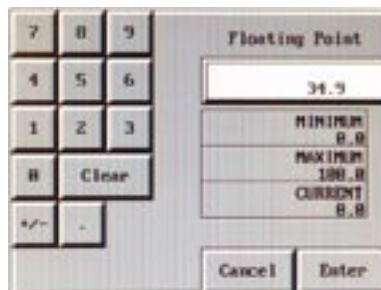
**POP-UP Electronic Thumbwheel emulates a mechanical thumbwheel switch.**



Thumbwheel object in EZCE Touchpanel is an electronic replica of conventional mechanically operated thumb wheel switch.

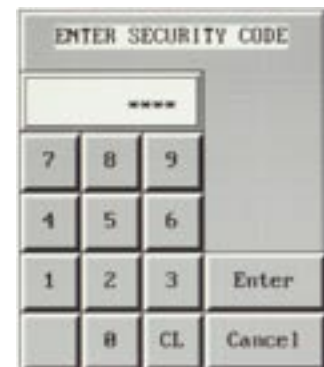
Simply hit "ENT" or "Enter" on all pop-ups to download your entry to the PLC.

**POP-UP Keypad allows you to enter data into a pre-defined PLC register.**



Pop-up Keypad is the EZiest method to input data into pre-assigned addresses in PLC. The numeric entry object makes writing values to PLC EZier as never before. Minimum and Maximum limits can be set using Range Check option. The keypad also has built-in capability to change data types to floating point, signed/unsigned decimal, hexadecimal or octal.

**Eight levels of password security for every input object.**



All data input objects have password security. A user can define up to eight password labels of security. In addition, variable passwords can be defined from registers in the PLC.

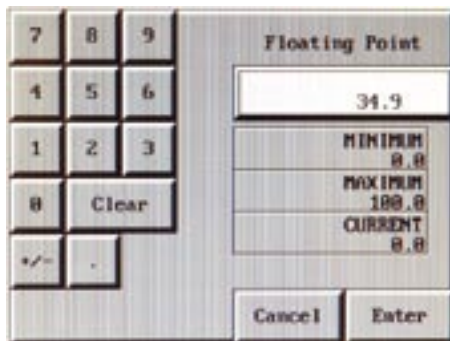
# Just a Few Reasons Operators Love These Panels

Our engineers and technical support personnel worked closely in designing this product, keeping one thing in mind... that this touch panel has to be the most user friendly for machine operators. Here are some highlighted features:



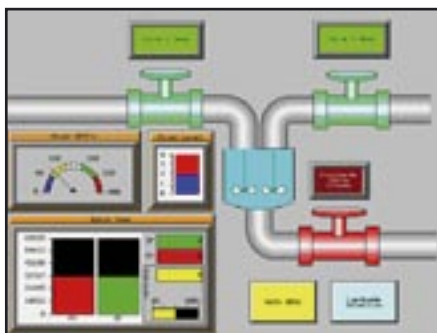
## 1 Operators Can Choose their Favorite Language

The United States has one of the most culturally diverse population of all countries and that means operators have a need for multiple languages. We were among the first to identify this need which resulted in multiple language support in our EZPanel Enhanced editor. You can configure each and every object (except PID face plate) for up to nine different languages (ASCII characters) each. While configuring our panel, a “language button” can be created to let the operators select their favorite language. For example, one operator can change the whole screen to Spanish by pressing a “Spanish” button. The next operator can change the whole screen to English by pressing an “English” Button. And so on...



## 2 It's EZier than ever for operators to input data!

EZCE Touchpanel allows pop-up keypads for users to enter data in any of its supported formats (Signed and Un-Signed Decimal, Floating Point, Hexadecimal, and Octal). When creating pop-up type inputs for the above type formats, it automatically selects the right type based on the PLC/internal tag chosen. Ever needed a thumbwheel type input? We've added that as well, which allows the operator to scroll up/down each digit (max of five digits). All the data input type objects (including pop-up and thumbwheel) can be protected with up to eight levels of password protection. These passwords can be pre-programmed in our editor or they could be pointers to registers in a PLC. Having the passwords pointing to PLC registers allows for different passwords for multiple shifts and overrides by supervisors.



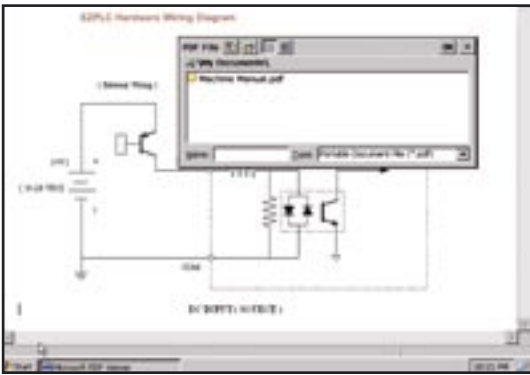
## 3 Scale objects to any size with no distortion

Our Editor uses vector-based graphics for objects. Unlike other editors that use graphic symbols, which distort when scaled, objects created by EZPanel Enhanced editor retain their shape with no or very little distortion. Another advantage to using vector based graphics is the super fast response time as our objects utilize very little memory. Any object in our editor is configurable up to 128 colors and allows importing of bitmaps as well with 128 colors.



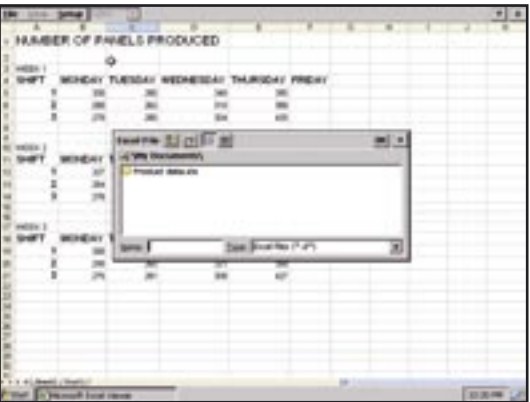
## 4 The most sensible objects hard to find in other brands

EZCE Touchpanel offers a graphical trending feature (great for time change over), PID face plates (single loop PID controller face plates), Downloadable Recipe (you can download up to 20 values, predefined or pointing to variable registers, to a PLC with just a single push button), thumbwheel, analog and digital clocks, radio buttons, step switches, many forms of meters, and many more along with our 4000 objects from SymbolFactory™.



## 5 View Machine Manuals in PDF.

To have fast and immediate access to information on machine/process. EZCE Touchpanel provides operators with the flexibility to view machine manuals or any other documents in PDF format on the panel right away.

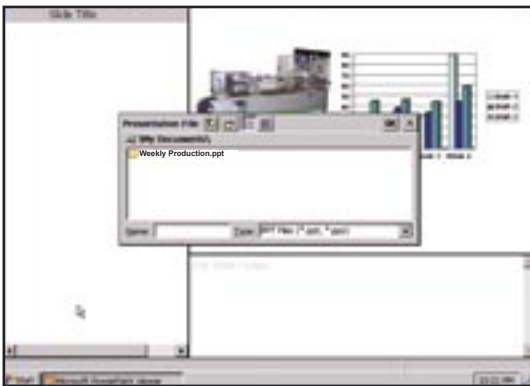


## 6 View Microsoft Excel and Microsoft Word

Instead of sending the current data to a computer or server, machine operators may want to view and analyze the data on the screen right away. EZCE Touchpanel provides you easy to view data using Microsoft Excel and Word format on the screen itself.

## 7 View PowerPoint and MPEG Video for installation, training etc.

EZCE Touchpanel provides operators with easy to view PowerPoint applications and video files in MPEG format. PowerPoint and MPEG Video provide you with an added advantage to visually learn and train other operators or observers about the machine or the process of the machine.



## 8 Store massive amount of data and send to plant server

Now a days, machines collect massive amounts of data for different processes of the machine and that data needs to be sent to a plant server to archive for future reference. EZCE Touchpanel provides you with an easy way to store massive amounts of data and send the data to plant server.

## 9 Write notes on Microsoft WordPad Text Editor

When the machine is in the running mode, there are some notes and values that are needed to be noted. You don't have to be worried about carrying a pen and paper with you all the time. EZCE Touchpanel provides you with an ability to write notes on Microsoft WordPad Text Editor.

## 10 Internet Explorer

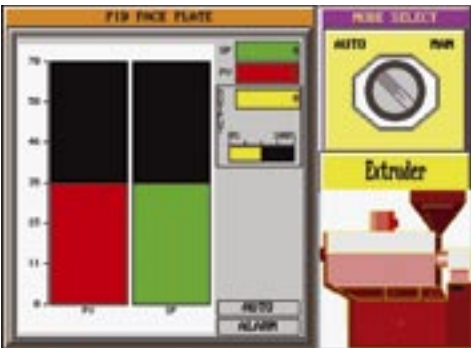
Machine operators can go to the company's website to get up to date information that is needed to upgrade machine process or get new production instructions from a different location. EZCE Touchpanel provides you with an easy connection to access Internet Explorer.



## 11 Send or receive files from remote location

Operators may also need to send and receive message or files from a remote location. EZCE Touchpanel provides you with easy method to send and receive files from remote location.

# Enhanced Graphics Made EZ



EZCE Touchpanel comes with unique graphical features to convert PLC data into usable operator information. We believe that information is power! Here are just a few features:

## Graphical Trends Analysis

Operators find it much EZier to time-monitor the process by looking at the trend charts, rather than browsing thru cumbersome numbers. The most intuitive and EZ-to-configure trend graphs allow users to monitor up to 6 PLC variables in a single chart. The chart can be pre-programmed to acquire data by seconds, minutes, hours or even days. Each chart can keep up to 999 data points.

## PID Faceplates

A PID Faceplate object enables a one-stop review of your set-point and process variable together. A single loop PID algorithm makes the Output variable control the Process Variable to keep it as close to the set-point as possible. Use a PID Faceplate with other objects such as trend chart and experience amazingly EZ process control!

## Multi-State Indicators

Process monitoring was never so EZ! Multi state indicator enables you to highlight various process conditions by setting a PLC address. We also included an ability to display the called process message as an indicator light to make it more visible to the operator.

## Alarm Reporting

The Alarm History object allows the user to configure a button, that when pressed, will provide the Alarm Count or Alarm History. When PLC triggers an alarm, such pre-programmed button pops-up on the screen. An active alarm is displayed at the bottom of the current screen. The operator can go into the details of the alarm right from the touch screen, and take necessary action immediately.

## Dynamic Recipe Object

How about having an ability to write up to 20 preset or variable values to PLC by pressing just a single button on the screen? EZiest ever method to change the process! Being a critical object, it can have 8 levels of password protection and visibility control too. Use Recipe with Numeric Keypads to add on-screen flexibility to recipe modification.

## Built-in 4000 Symbol Library

Being creative in your screen design is EZiest and at your fingertips. You don't need to search for that special bitmap image you want to put on the screen anymore! EZ CE Panel comes with standard built-in image library with 4000 symbols like pumps, valves, blowers, conveyors etc. Any object in our editor is configurable up to 128 colors and allows importing of bitmaps as well with 128 colors.

## Distortion Free Scaling of On-Screen Objects

The innovative usage of vector-based graphics for objects in EZCE Touchpanel allows almost distortion free scaling of screen objects. This is unique compared to many other editors that use graphic symbols, which distort when scaled. Vector-based graphics also offer super fast response time as our objects utilize very little memory.

# Program this Screen in less than 10 minutes

## EZ as 1-2-3

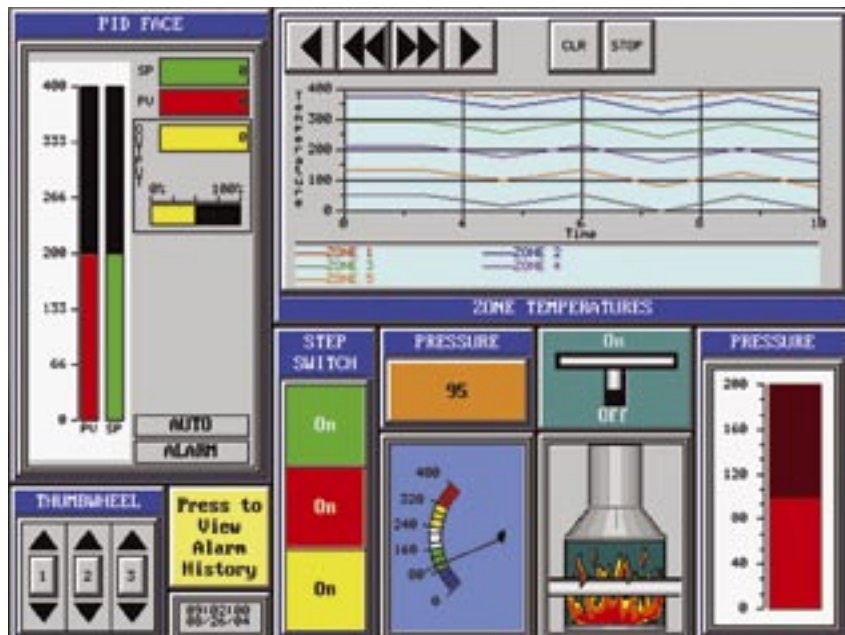


### EZCE Touchpanel has earned its name!

We named it EZCE Touchpanel for a reason. We made an easy to use, simple operator interface that will save you lots of engineering hours and design time due to its simplicity and ease of use. You don't need prior programming knowledge to design a screen. You do not need to attend any classes to learn how to program. It is Intuitive, it is Simple!

#### The only assumptions are:

- You are familiar with Windows-based environments
- You have a good understanding of your PLC memory's address formats

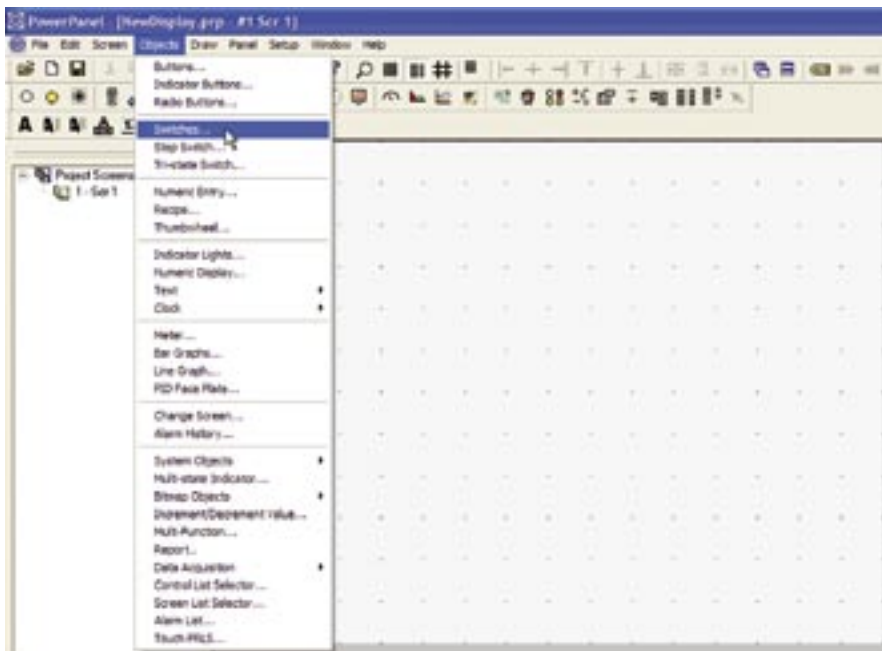


### The following example shows just how EZ it is to create an object:

# 1

#### Select an Object

- Click on "Objects" on the main menu bar
  - Select the object you wish to create. In this example, click on "Switches".
- You may also select an object from the tool bar below the main menu.



#### Tool Bar



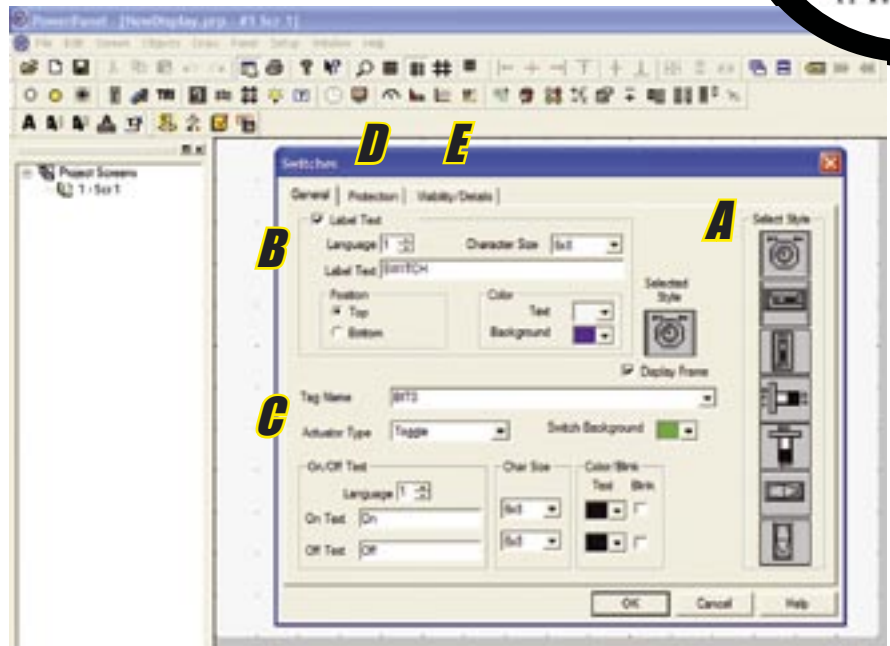
Or select switch object from the tool bar

## 2

### Fill in the Dialog Box

- A) Click the style of switch you wish to use.
- B) Select "Label Text". This will allow you to name and customize the object.
- C) Select or create a PLC bit address tag that the "Switch" will activate.
- D) If you need password protection, click on the "Protection" tab at the top of the dialog box.
- E) If you wish to keep this object invisible until a PLC tag is triggered, click on "Visibility/Details".

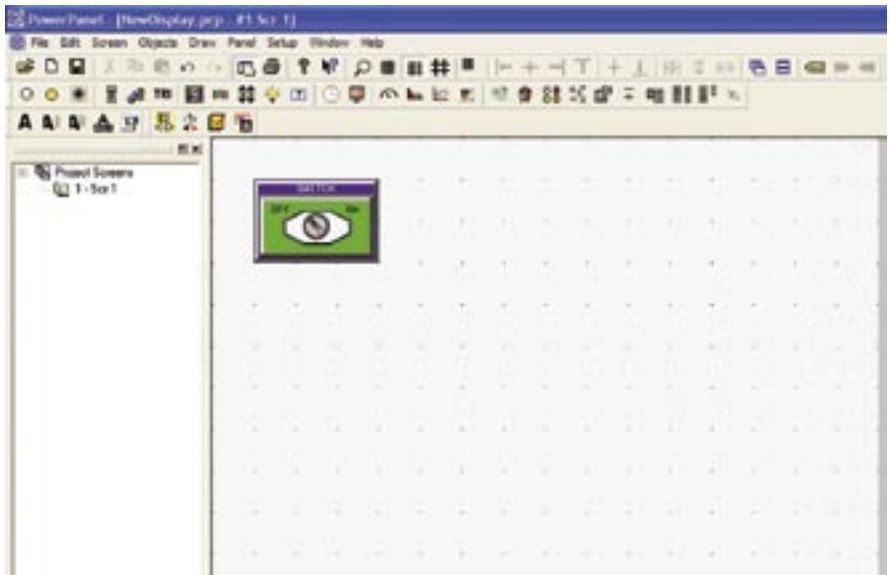
Visibility will be discussed later in detail.



## 3

### Placing the Object

Click your mouse on the screen and stretch the object to your desired size. If you want to edit the object again, simply double click on it and the configuration dialog box will reappear. There is even a "Simulate" button on the dialog box for some objects so you can see how objects will work in real time.



**PERFORM THE PREVIOUS STEPS FOR DIFFERENT OBJECTS AND YOU HAVE DESIGNED YOUR SCREEN!**

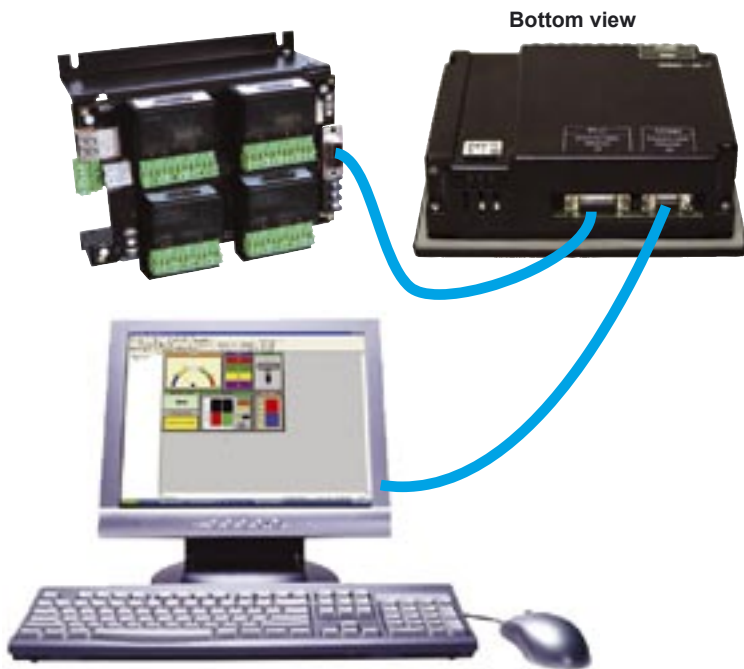
**Designed from Ground up to Simply be the Eziest Software to Program Touch Panels**

**You do not have to spend \$1300 or attend a 3 day course to learn how to program an operator panel!**

Allen Bradley recommends attending their course number RS-RSVMETRG for developing skills needed to create and configure their panels even for small machine/process

EZ has widely been recognized as the Easiest to program software in the industry. More than 10,000 companies and over 20,000 Au□  
p□ software to be so intuitive that even a first time user can get it up and running in a couple of hours without opening the software manual.

# EZ & Most Sensible Communication Setup



## PLC Connectivity Not a Costly Affair

Having made the programming EZ, we also made the connectivity EZier. A simple molded cable lets you connect the EZCE Touchpanel to most of the PLCs. These custom designed cables not only bring the cost of connectivity down but also make it the most flexible.

## Patented Online Programming

Best way to reduce your process downtime while editing the Panel program. EZCE Touchpanel can be programmed via separate Programming Port, while it is 'Live' thru PLC Port! Operator can continue running the machine while the Engineer is modifying certain section of the program. The changes to the program are transferred to the Panel "Online" without swapping the cables. What an EZ way to save time and engineering effort!

## Got more panels?

Connecting multiple panels to your PLC can't be EZier than this! All you need is a PLC that has multiple communication ports that we support! If your PLC allows it, you can add extra ports by installing data communication modules. EZ CE Panels support most of the PLCs in the market.

## Data Highway Plus

EZCE Touchpanels can be installed with an option card to be able to communicate with AB DH+

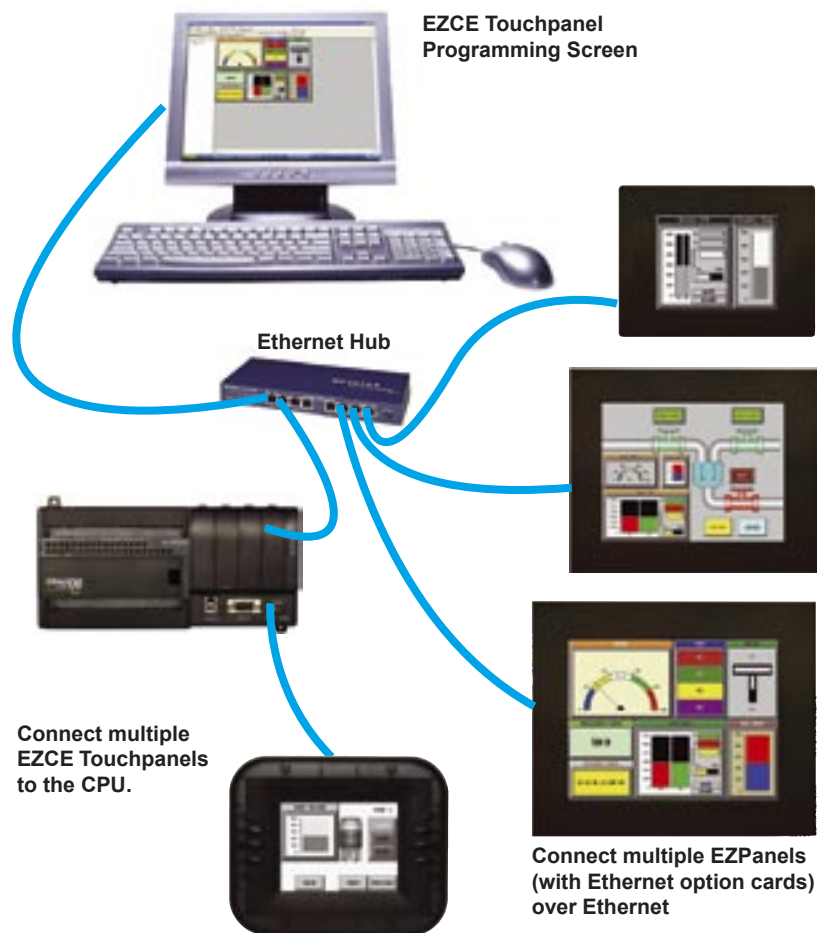
## Ethernet Capability makes us EZ & Fast

EZCE Touchpanels are among the fastest, but there are limitations to the PLC communication port speed. If your PLC can support 10 Mega Baud Ethernet connection we have a Panel that will allow you to be fast and flexible by using it's Ethernet port.

## Open Protocol Panels

EZCE Touchpanels are based on open protocol technology, meaning that they can be installed with popular network cards like DeviceNet, Profibus, MODBUS TCP/IP or Ethernet/IP. This makes us a unique Touch Panel that can communicate easily with almost every popular PLC and almost every network in the industry!

## Program Over Ethernet Network





# Unique Visibility Tags - Allows Objects to be Hidden for Maximum Utilization of Screen Real Estate

Patent Pending

All objects have the unique ability to appear and disappear based upon both PLC tags, as well as internal tags. In the following example, we show one of the many ways Visibility Tags can be used to expand your screen.

*Here is how one of our customers used visibility tags to reduce the number of screens by 30%!*

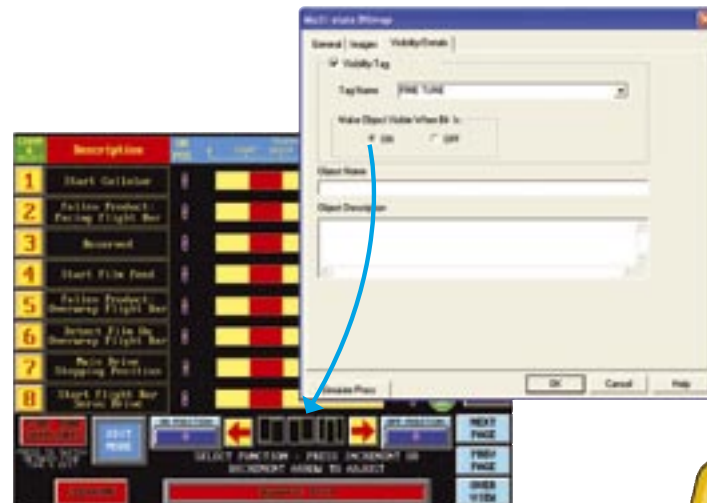
**1 Normal Run Mode**  
Operator does not have access to changing PLS setpoints.



**2 Set point Edit Mode**  
PLC "PROG\_MOD" Tag makes three additional objects appear on the screen. "ON POSITION", "OFF POSITION" and "Updating Setpoint" objects are programmed with "PROG\_MOD" variable as their Visibility tag.



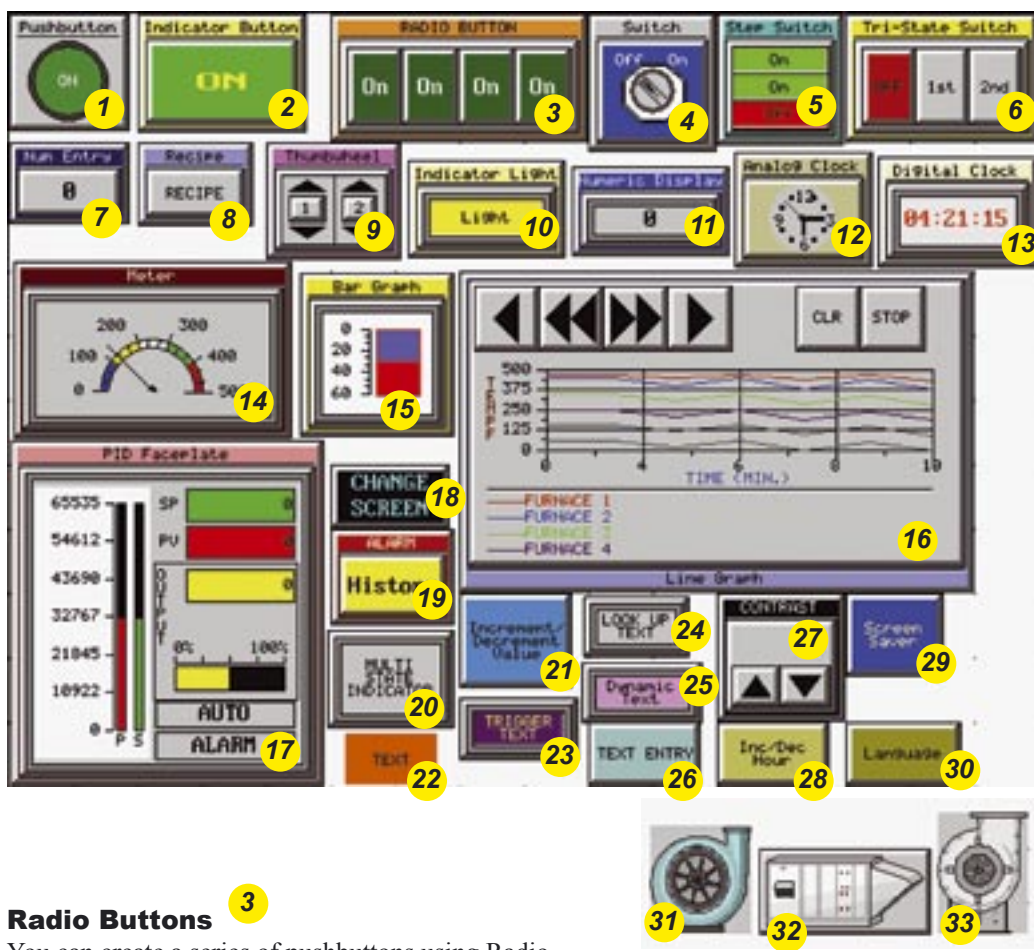
**3 Fine Tune Mode**  
PLC "FINE\_TUNE" Tag makes Fine tune objects replace the updating setpoint object. Panels without visibility tags would need screen real estate for both "PROG\_MOD" objects and "FINE\_TUNE" objects. Visibility tags thus save a tremendous amount of screen real estate. Its not unusual to reduce the number of total screens to half by virtue of this unique feature.



# EZCE Touchpanel Objects

## The Most Sensible, Best-Looking Objects Available

The screen below shows a configuration of the available 33 objects in EZCE Touchpanel editor. This and the following page cover the basics of some of these objects.



	1	Pushbutton
	2	Indicator Button
	3	Radio Button
	4	Switch
	5	Step Switch
	6	Tri-State Switch
	7	Numeric Entry
	8	Recipe
	9	Thumbwheel
	10	Indicator Light
	11	Numeric Display
	12	Analog Clock
	13	Digital Clock
	14	Meter
	15	Bar Graph
	16	Line Graph
	17	PID Faceplate
	18	Screen Change
	19	Alarm History
	20	Multi-state Indicator
	21	Increment/Decrement
	22	Static Text
	23	Trigger Text
	24	Lookup Text
	25	Dynamic Text
	26	Text Entry
	27	Adjust Contrast
	28	Inc/Dec Hour
	29	Activate Screen Save
	30	Select Language
	31	Dynamic Bitmap
	32	Bitmap Button
	33	Multi-state Bitmap

### Radio Buttons 3

You can create a series of pushbuttons using Radio Button Object. When one button is on, all the other buttons are off (Only one button/station active at one time, like an old car radio)

### Meters 14

Meter Object has many style types and operations available. EZCE Touchpanel Editor allows you to custom design the color bars for alarm zones and also allows you to select the number of divisions to be displayed. The meters provide an excellent graphical representation of analog gauges.

### Line and Bar Graphs 15 16

The Line and Bar graph objects have an outstanding resolution. You can custom design the legend for X and Y axis and assign labels to major "tic" marks on a chart. Just adding a bit of color makes them as visually appealing as they are functional.

### PID Faceplate 17

Use our PID faceplate for PLC systems capable of PID loops. PID faceplate allows you to display values for three PID loop controlled parameters in the form of bar graphs.

# EZCE Touchpanel Objects

## Recipe Objects 8

By using one of our most desired Recipe objects, you can download up to 20 pre-set or variable PLC registers per Recipe in the EZCE Touchpanel panel. This object can also be used to set values in PLC registers to change a process all together!



With one press of a button, you can view all of the tag-names and values of the recipe batch.



## Alarm History 19

Use our pre-built Alarm History button to show Alarm Count and Alarm History with one touch of a button. Alarm History displays all the alarms triggered sequentially with the most recent one right on the top, whereas Alarm Count displays the exact number of times a certain alarm has been triggered. Use this great preventive maintenance tool to replace any components that need to be changed. Any time an alarm is highlighted and selected, it will show you all the details that you'll ever need to know including the time it was triggered, the time it was cleared, date stamp, upper and lower limits along with the limit that tripped an alarm.



With a push of a button, you can view Alarm Count, Alarm History, and Alarm Details.



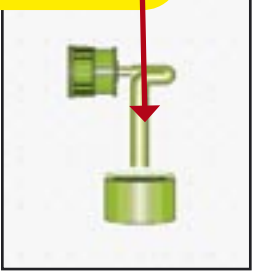
## Bitmap Objects 31 32 33

EZCE Touchpanel Enhanced editor allows you to create Dynamic Bitmaps, Multi-state Bitmaps, Button Bitmaps, and Static Bitmap Objects in a breeze. There is a built in library of 4000 objects available for you to copy and paste directly to a project screen and use them in any arrangement or position them just the way you like.

The selected object will be highlighted and shown in the preview window

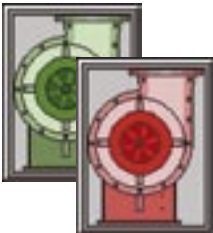
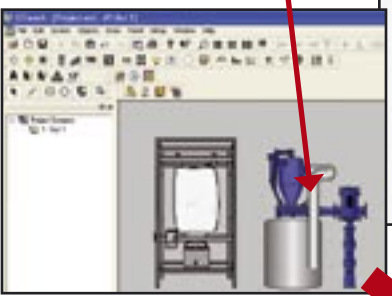


Copy the symbol from the library and paste it onto the EZPanel screen



For a true dynamic simulation, use our Dynamic Bitmap object to stack layers upon layers of bitmap objects which only allows one bitmap object to be displayed at one time based on whether it is triggered by a control program or the panel itself. For example, you can display a red image of a blower when its turned off and a green image when turned on. Dynamic Bitmap Objects allow you to select different bitmaps for "On" and "Off" states of a PLC/Internal register. Under "On Bitmap" settings, select a green blower (using the symbol factory) and repeat for "Off Bitmap" with a red blower. That's it! And you have created a dynamic simulation of your blower.

You can customize the screen to simulate your process by adding bitmaps from the extensive symbol library included in the EZPanel Enhanced Software.



Multi-State Bitmaps have the same functionality of Dynamic Bitmap buttons with only one difference: It is a lot more powerful in that it allows you to display all the way to 16 bitmaps based on the value of a bit in a word or a word address.

A 'Bitmap Button' object is a "Button" which is capable of displaying different bitmap images when turned on or off by a user. On the other hand a 'Static Bitmap' lets you display a bitmap (imported, copied from clipboard, or symbol factory) which can be resized within the editor and stays static on a screen, e.g. a company logo.

Click and drag to size the bitmap objects in the EZTouch Enhanced software



# EZCE Touchpanel Enhanced Editor Example

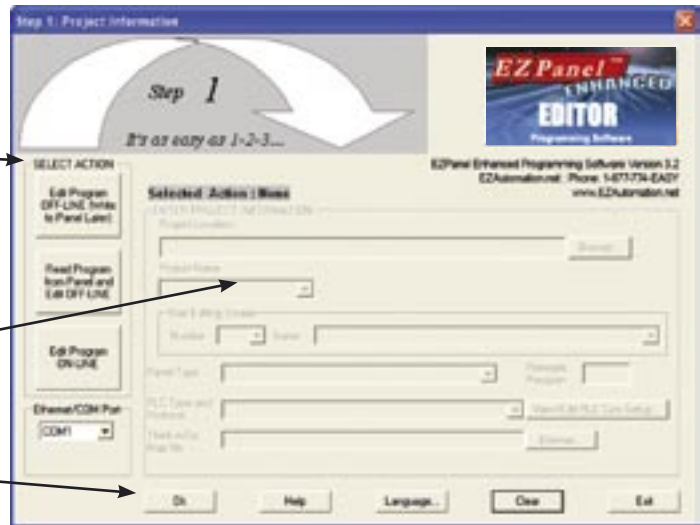
## EZ as 1-2-3

**1** The startup screen would provide you with options for creating and opening projects. First, choose the configuration mode: Edit offline, Read from Panel, Edit Online. Then enter your system parameters by typing in the fields or using the pull down menus.

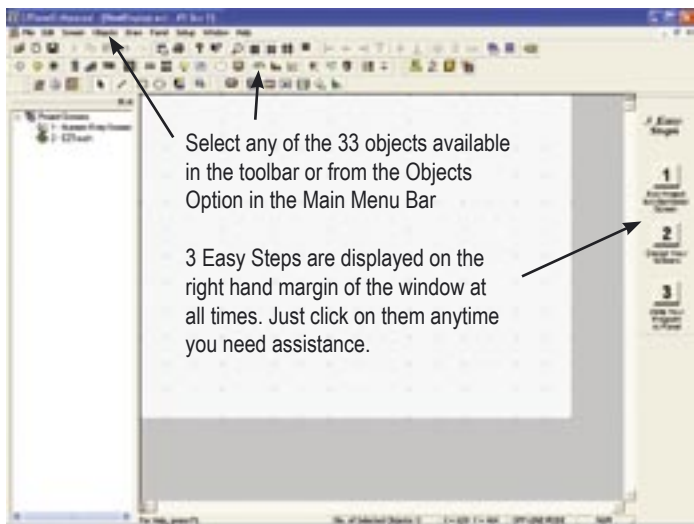
Select the configuration method from our "Online, Read from Panel, and Edit Offline" options.

Enter system information and use the pull-down menu for correct selections.

Click OK when you're done!



**2** Once you select your options and your new/previously developed screen is open, you are ready to start creating your project using our easy to find toolbar or menu's.

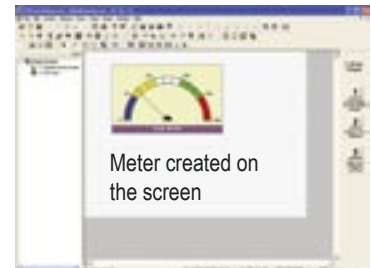
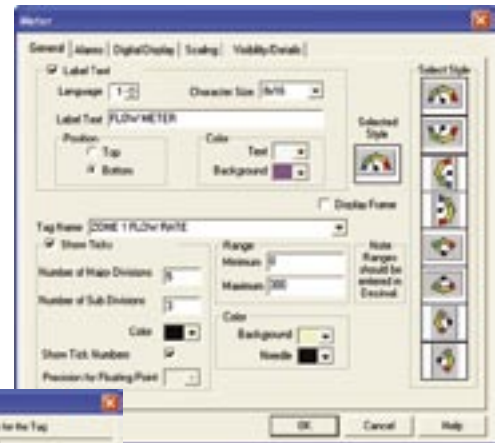


Select any of the 33 objects available in the toolbar or from the Objects Option in the Main Menu Bar

3 Easy Steps are displayed on the right hand margin of the window at all times. Just click on them anytime you need assistance.

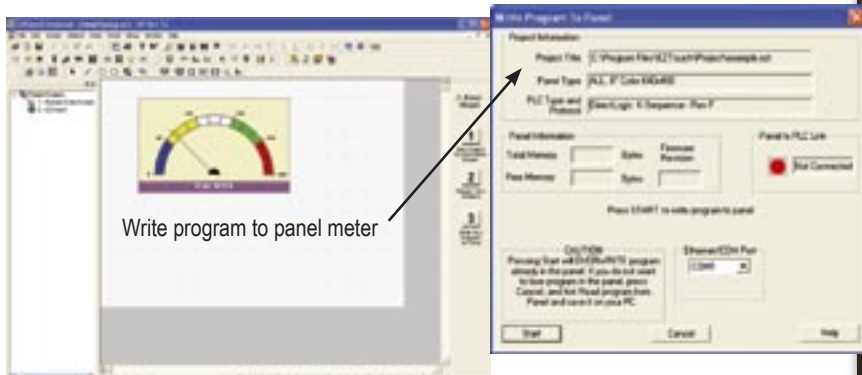
Complete the Dialog box (on the right)

And the PLC assignment (below)

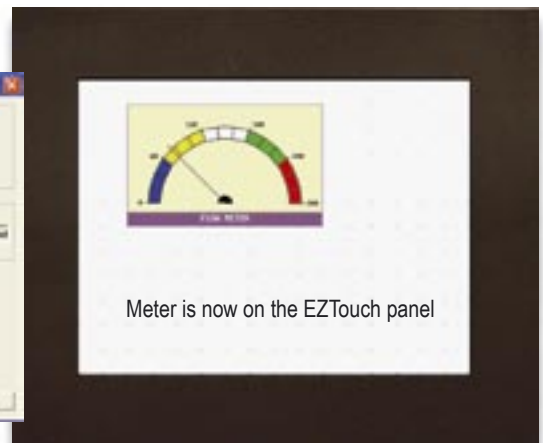


Meter created on the screen

**3** Click the "Write Program to Panel" button, click OK, and you're done! Or just click Save if in Online Mode.



Write program to panel meter



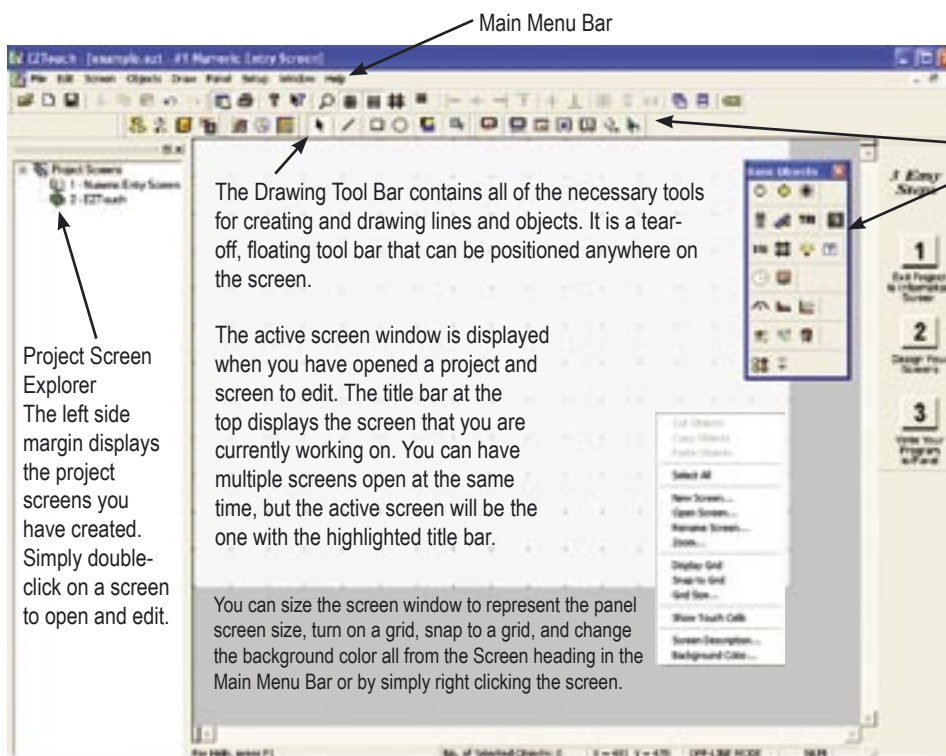
Meter is now on the EZTouch panel

# EZCE Touchpanel Editor

## Easy-to-use Programming Software

EZCE Touchpanel Editor is by far one of the easiest to use programming software available in the market. You just saw a presentation of our editor's most powerful objects in the last few pages. Now let's take a look at how easy and simple it is to create some of those objects.

The EZCE Touchpanel programming software is just like any other windows application that comes with a main menu bar, tear off toolbars, a Project Screen Explorer, a main window area, and individual screen windows. Build multiple screens at the same time and display them as tiled or cascaded in the main window.



## Toolbars

EZCE Touchpanel Enhanced Editor allows you to place up to nine different toolbars (Standard, Basic Objects, System Objects, Text Objects, Bitmap Objects, Draw, Panel 3 Easy Steps, and Project Screens). These are fully customizable toolbars and can be moved and placed to your liking. The following example shows how the basic toolbar is moved to the right of the screen and also shows the flyover tip associated with each object. You can also display 'Panel' toolbar by selecting it through 'Edit' pull down section. The following icons are present in 'Panel' toolbar: Write to Panel, Panel Information, Display Screen, Reboot Panel, Panel Time and Date, and Diagnostics.

Tear-off floating toolbar contains all of the objects represented by an icon. Each icon has fly-over help that gives a brief description of the object icon. Simply click on the object that you want to create and the associated dialog box will appear prompting you with the necessary information to build the object.

## Minimum PC Requirements

- Pentium, 133 MHz, CD ROM
- 32MB RAM
- 87 MB free disk space
- WIN95/98/2000/NT4.0/XP/XP Pro
- Color SVGA  
800x600 minimum  
1024x768 recommended

## Online Programming

Online program editing is one of the most powerful features of EZCE Touchpanel panel. It lets you program your panel 'Online' without losing any precious time uploading and downloading projects to a panel. Just connect your panel to your computer, select online programming, edit, and save your entire project while your panel is online with a PLC.

In case you missed our illustration of just how important and powerful this feature is, please review page 3-8 in the EZPanel Enhanced section as it explains in detail this huge time saving feature!

## Windows Architecture

EZPanel Enhanced programming software is built on the Windows 32-bit system architecture and thus utilizes all the functionality associated with it. The 'Main Menu Bar' has pull downs for every menu, some of which provide even more dialog boxes when selected, along with the flyover tips. Whenever the cursor is on top of one of these icons, a brief description or a hot key is displayed on top of it for you to navigate with ease. This information is very helpful when trying to determine the right kind of object or selection amongst all the options available to you. Multiple screens in the main programming window can be tiled or cascaded as per your preference and can also be minimized/maximized within the main window.

# EZCE Touchpanel Editor

**1**

Using the tool bar or pull-down menu, select the object that you want to create.

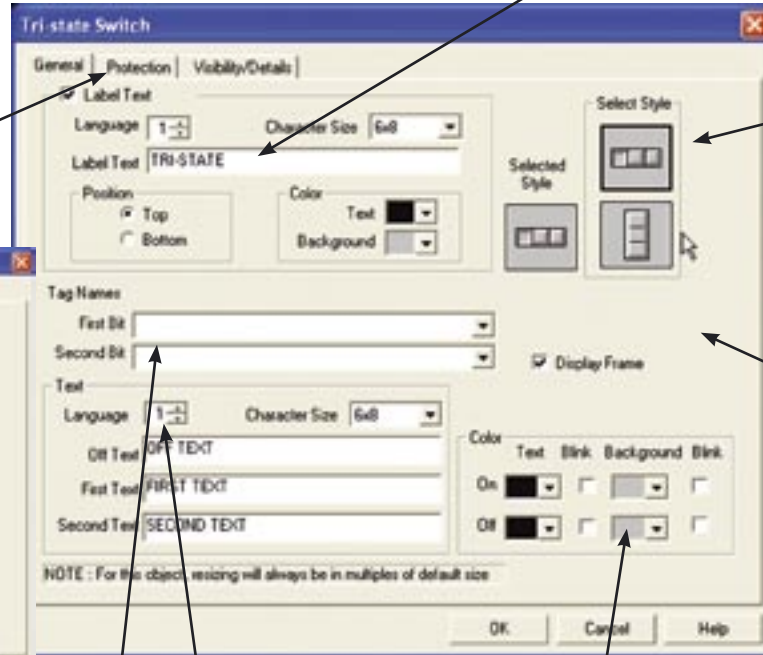


It's as EZ as **1-2-3**  
to Create an Object

**2**

Each object has an associated dialog box containing all of the necessary parameters for creating the object. Simply fill in the areas to meet your application needs and click OK.

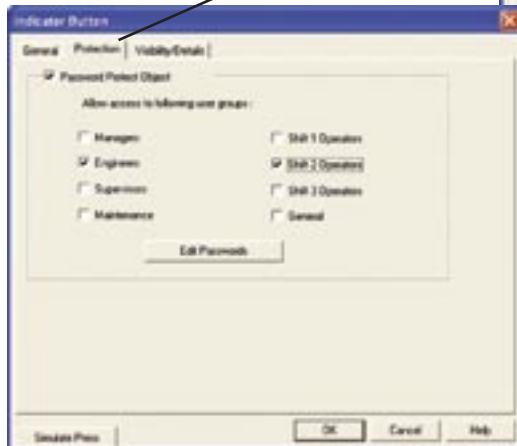
## Typical object configuration dialog box



You can custom label the objects by enabling the text and typing in the name you want.

Most of the objects have a style selection of how the object will appear on the screen.

(Example shown at step 3)

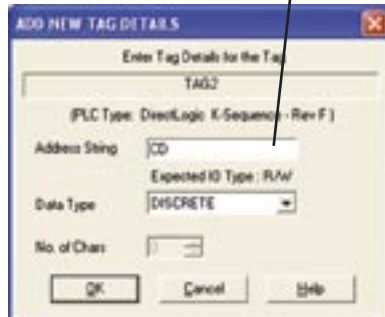


## Password Protection

Most functional objects have password protection built-in for up to eight different user groups. Simply choose the group or level of protection and enter the password.

## PLC Addressing

One of the fields to be completed in the object creation window is the PLC tagname. Type in the tagname and the appropriate PLC address string and data type, and the object will be linked to the PLC. It's that easy!



## Color Palette

The color palette has 128 available colors for text, background, indicators and other object parameters.



## Se Habla Español? No hay Problema!

Another great feature of the EZCE Touchpanel panels is the ability to program your text and messages in different languages. As long as the text characters are in the ANSI text table, they can be displayed on the panel. You can store up to nine different language types for each object. Select the language number from the pull-down menu and type in the text to be displayed.

Si usted prefiere que sus mensajes se visualizen en Español, simplemente seleccione el número de el lenguaje que desea y escribalo en su texto para cada función.



O, se ha qualche operatore che preferisce l'italiano, scriva il test in una forma più comprensibile per loro.



**3**

Object is drawn on the screen.



with Display Frame



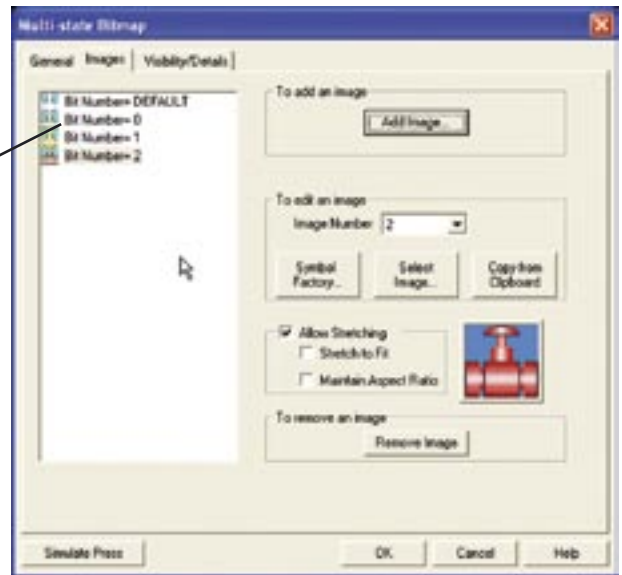
without Display Frame



# EZCE Touchpanel Editor

## Multi-state Bitmap Object

The new Multi-state Bitmap Object is created to display images within a frame on the EZCE Touchpanel screen. Each object has its own programmed images. The object will display one image at a time based on a bit (the one that is set), or a value in the tag. The maximum number of images that can be programmed is based on available memory.



**Default Bitmap**      **Bitmap of bit 2**  
**Bitmap of bit 1**      **Bitmap of bit 3**



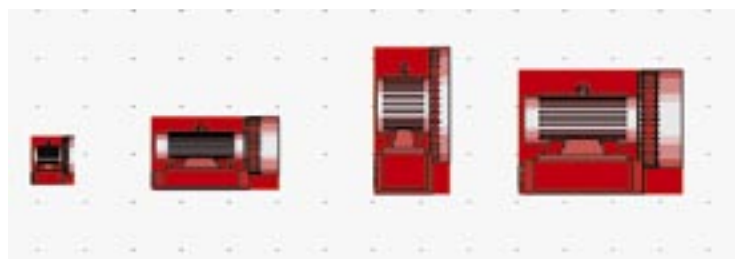
## Bitmap Button Object

The new Multi-state Bitmap is a touch object that combines functions of a button, a Dynamic Bitmap, and an Indicator Light. It allows you to perform a WRITE operation to one bit and a READ operation from a second discrete location. The state of that READ location determines whether the button is displayed in the ON or OFF mode. You may choose to make the READ and WRITE location the same.



## Sizing Bitmap Objects

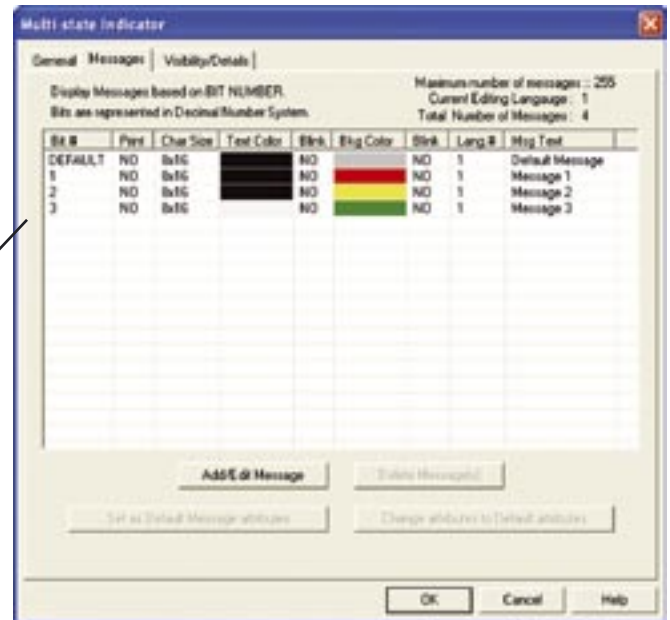
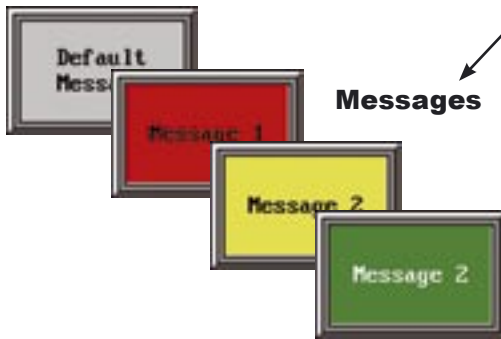
EZTouch software allows bitmap objects to be sized with total flexibility, including changing the shape. Simply click on the object to select and then click and drag one of the side or corner handles to size the bitmap as needed.



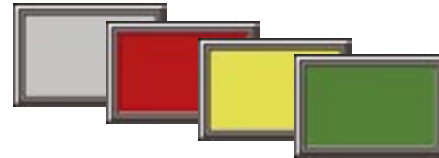
# EZCE Touchpanel Editor

## Multi-state Indicator Object

The Multi-state Indicator Object is created to display preprogrammed messages within a frame on the EZCE Touchpanel screen. Each object has preprogrammed messages that are stored in the object itself. In other words, messages are stored in the object, NOT the Message Database. (The Message Database is used by the Lookup Text Object only.) It displays one message at a time based on a bit (the one that is set), or a value in the tag. The maximum number of messages that can be programmed is 255. Click on the Messages tab to program messages in the database.

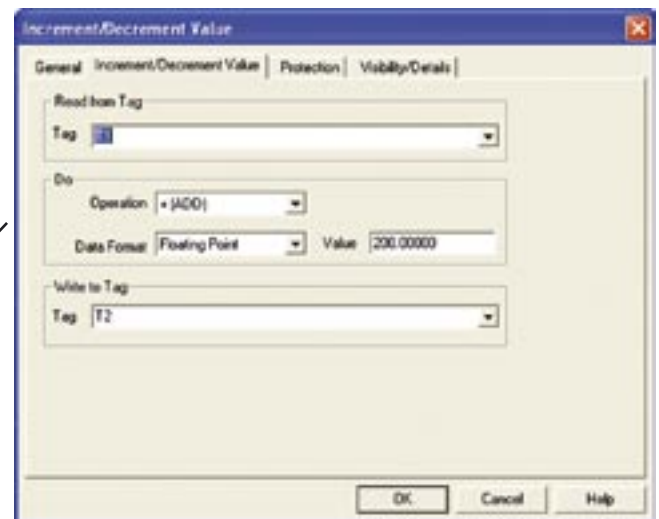


The Multi-state Indicator can also be used without messages as simply a Multi-state Indicator Light, such as the one shown here.



## Increment/Decrement Value Object

The Increment/Decrement Value Object allows you to configure a button, that when pressed, will Add or Subtract from a value using two tags and a programmed value. You will be able to Read a value in the first tag and then Write to another using the value you have programmed to increment or decrement that register value. Of course, if both tags are the same, the tag itself is changed by that value.





# EZCE Touchpanel™ Overview

## Introduction

EZCE Touchpanel is an open platform PLC Touchpanel that combines the best assets of the original EZTouch and EZPanel Enhanced, which is its ease of use for both operators and programmers with the advanced functionality of a disk-less industrial computer running WindowsCE. It is available in all the eight different screen models of EZPanel and has the same footprint as the original EZTouch and EZPanel Enhanced. Programs developed on either the original EZTouch or the EZPanel Enhanced can be seamlessly transferred to the EZCE Touchpanel. Programs developed on EZCE Touchpanel can also be transferred to EZPanel Enhanced. In fact the EZPanel Enhanced Programming software is common to all these models.

## Overview

EZCE Touchpanel are fully programmable and provide power and flexibility through a vast set of features. The displays are available in white on blue (6" only), monochrome & full color. Mono displays are only available with a 6" screen. The color units are available in 6", 8", 10" or 15" versions.

## Getting Started

Installing the software and configuring the EZCE Touchpanel is simple to do. You will only need the following items to successfully connect and configure the panel:

- EZCE Touchpanel
- 24 VDC power supply (min. 1.5A, switching)
- Programming cable
- PLC interface cable
- PC
- EZPanel/EZCE Touchpanel Programming Software

## What does it have?

### Key Features:

- Incredible 3-D graphical objects: pushbuttons, numeric entry, meters, line graphs, PID faceplates, etc. All are high-speed, vector-based objects with amazing scalability.
- 128 colors for use in objects and graphics
- Display text in up to nine different languages (user-selected by a push of a button!)
- Built-in Symbol Factory with over 4,000 symbols
- Screen and object password protection (eight user-defined levels)
- Unmatched alarm capability with history, count and details
- Recipe downloads to the PLC: 20 values into 20 registers (fixed or variable)
- Floating-point numbers to and from PLC
- Built-in clock and calendar
- Forty-character tag names mapped to PLC addresses
- Bitmaps can be sized on the screen in the EZPanel/EZCE Touchpanel Software
- Import/Export tags to/from Excel or CSV files - Export messages to Excel or CSV file
- Export alarms to Excel or CSV file
- Multi-state Bitmap object (bit or word selectable)
- Multi-state Indicator/Message object (bit or word selectable) allows up to four embedded data variables in messages
- Bitmap Button object
- Scalable meters and bar graphs
- Floating point support for Meters, Bar Graphs, PID and Line Graphs



## Made in America



## Windows CE Features:

### Hardware

- AMD Alchemy 333 MHz 32Bit Processor
- 32MB Flash and 64MB RAM built-in
- Compact Flash slot
- One 10/100 Base-T Ethernet port
- USB Host port
- 2 Serial ports, one RS232, second RS232/422/485
- 4 wire Analog resistive touch screen
- Network card option for future expansion
- Mechanical/hardware interface to build EZPLC and EZI/O in the same housing
- Choice of 8 displays

### Software

- Windows CE.net® 4.2 Core preloaded in standard model with Compact Framework
- Windows CE.net® 4.2 Professional Plus preloaded in Enhanced model, with Internet Explorer and Viewer software
- SDK for Software Development

## Compact FLASH Slot

EZCE Touchpanels have a slot for Compact Flash for expanding non-volatile memory. Because of the built-in 32MB of Flash on the CE Motherboard, you most likely will not need this external Compact Flash but we do have a slot if you do.

### Compact Flash Card getting installed



# EZCE Touchpanel Overview

## Compatible with Major PLCs

EZCE Touchpanel is the most compatible panel ever built. One of the great things about EZTouch panels is connectivity to

many different PLC types. In addition to EZPLC, you will have no problems connecting to major PLCs (Allen Bradley, GE, Mitsubishi, Omron, Modicon, Siemens, etc.)

PLC Compatibility Table			
PLC/Network	Model	Protocols	
<b>EZAutomation</b>	EZPLC	EZ Protocol	
<b>Allen-Bradley</b>	MicroLogix 1000/1200/1500 SLC 500, 5/01, /02, /03	DH485/AIC/AIC+	
	MicroLogix 1000, 1200 and 1500 SLC 5/03, /04, /05, PLC-5 (w/DF1)	DF 1 Half Duplex; DF1 Full Duplex	
	SLC 5/04, PLC 5	DH+ (Option Card)	
	PLC5	DF 1	
	PLC 2, 3 and 5	Remote I/O (w/DH+ Option Card)	
<b>Aromat</b>	Aromat	Mewtocol COM	
<b>Control Techniques</b>	Unidrive 2-wire, 4-wire	Binary	
<b>Control Technology Corporation (CTC)</b>	CTC 2600, 2700 and 5100	CTC Binary	
<b>DeviceNet</b>	DeviceNet I/O	Generic DeviceNet I/O (Option Card)	
<b>Ethernet</b>	ControlLogix, MicroLogix, CompactLogix, GE Versamax	Ethernet/IP, SRTP, DF1, Modbus TCP/IP	
<b>General Electric</b>	90/30 and 90/70 Versamax	SNPX, SNP	
<b>Idec</b>	Idec	Computer Link	
<b>Mitsubishi</b>	FX Series (all)	Direct	
	CC Link	CC Link Protocol	
<b>Modicon</b>	984 CPU, Quantum 113 CPU, AEG Modicon Micro Series 110 CPU: 311-xx, 411-xx, 512-xx, 612-xx	Modbus RTU	
	984 Series, Quantum Series	Modbus Plus (Option Card)	
<b>Omron</b>	C200, C500, CQM1, CPM1, CPM2	Host Link	
<b>Profibus</b>	Profibus-DP	Generic Profibus-DP (Option Card)	
<b>DirectLOGIC</b>	DL05	K-Sequence, DirectNet, MODBUS (Koyo Addressing)	
	DL105	K-Sequence	
	DL205	D2-230	K-Sequence
		D2-240	K-Sequence, DirectNet
		D2-250	K-Sequence, DirectNet, MODBUS (Koyo Addressing)
		D2-240/250DCM	DirectNet
	DL305	D3-330/330P	DirectNet
		D3-340	DirectNet
		D3-350	K-Sequence, DirectNet, MODBUS (Koyo Addressing)
		D3-350 DCM	DirectNet
	DL405	D4-430	K-Sequence, DirectNet
		D4-440	K-Sequence, DirectNet
D4-450		K-Sequence, DirectNet, MODBUS (Koyo Addressing)	
All with DCM		DirectNet	
<b>Siemens</b>	Siemens S7 MPI Adapter	3964R	
	Siemens S7-200	S7-200	
<b>Square D Symax</b>	300 Series CPU, 400 Series CPU	Symax	
<b>Texas Instruments</b>	TI5X5 Series - TI505, TI 545-1102, TI545-1104	TBP (Transparent Byte Protocol) or NITP (Non-Intelligent Terminal Protocol)	
<b>Uni-Telway</b>	Telemecanique TSX 37 Micro	UNI-TE (Version 1.1)	
<b>Other</b>	H2 - WinPLC (Think & Do V6.3, Think & Do Studio, check for version compatibility)	MODBUS RTU (serial port)	

## Networking

By using the applicable network card, EZCE Touchpanel panels can communicate through a variety of networking protocols.

Currently supported networks are:

- Allen-Bradley Data Highway Plus or Remote I/O
- Ethernet/IP
- Ethernet DF1 Protocol
- DeviceNet
- Profibus DP
- MODBUS Plus
- MODBUS TCP/IP
- CCLink
- GE SRTP

The DH+ and other network models are ordered as a complete unit. Please see the Selection guide table in this section for the part number of your interest.

## Easy Installation

Installing a panel is as EZ as 1-2-3!

### 1. Mounting

Since the EZCE Touchpanel panel is a front-panel mount unit, it requires a panel cutout, which you can mount by either drilling holes for mounting screws or installation of add-on DIN clips to secure the panel to the mounting area. You can find the detailed information on dimensions and installation on pages 11-30 thru 11-37.

### 2. Wiring and Connections

After mounting the EZCE Touchpanel, configure the protocol type in the software and connect the unit. You can find the detailed information on wiring and connection in EZCE Touchpanel Hardware and User Manual.

### 3. Communications Setup

For your convenience, our software ships with default parameters. Ensure that the settings are correct, change them if necessary, and you're ready to begin your project.

## Support

You can also find up-to-date information on all the products, any new features, tech support and much more. Our website address is:

[www.EZAutomation.eu.com](http://www.EZAutomation.eu.com)

If you have any questions for which you can't find an answer, give us a call at +49 (0) 2161 464470 and we will be glad to assist you.

# Connecting to a PLC/Programming Computer is EZ

## Cable Connections

Due to the new drivers that have been added to our EZCE Touchpanel, we have added many new cables for the various communication methods.

Cable Part Number	Cable Description	Price
<b>EZP-PGMCBL</b>	10 ft. Programming Cable	€20
<b>EZP-CBL</b>	10 ft. EZPLC cable RS232	€20
<b>EZP-2CBL</b>	10 ft. RS 232C, 15 pin D-shell male to RJ12	€20
<b>EZP-2CBL-1</b>	10 ft. RS 232C, 15 pin D-shell male to 15 pin male	€20
<b>EZP-3CBL</b>	10 ft. RS 232C, 15 pin D-shell male to RJ11	€20
<b>EZP-4CBL-1</b>	10 ft. RS 232C, 15 pin to 15 pin D-shell male	€20
<b>EZP-4CBL-2</b>	10 ft. RS 232C, 15 pin to 25 pin D-shell male	€20
<b>EZP-MLOGIX-CBL</b>	10 ft. Allen-Bradley MicroLogix 1000, 1200, 1500	€25
<b>EZP-SLC-232-CBL</b>	10 ft. Allen-Bradley SLC 5-03-04-05 with DF-1 port	€20
<b>EZPLC5-232-CBL</b>	10 ft. Allen-Bradley PLC-5 CPU with DF1 port	€20
<b>EZP-DH485-CBL</b>	10 ft. Allen-Bradley SLC 500 with DH485 port	€22
<b>EZP-90-30-CBL</b>	10 ft. GE Fanuc Series 90/30 and 90/70 using SNPX	€20
<b>EZP-MITSU-CBL</b>	10 ft. Mitsubishi FX Series 15-25 pin D-shell male	€20
<b>EZP-MITSU-CBL-1</b>	10 ft. Mitsubishi FX Series 15-8 DIN	€20
<b>EZP-S7MPI-CBL</b>	10 ft. Siemens Simatic 7 15-9 D-shell	€20
<b>EZP-OMRON-CBL</b>	10 ft. Omron C200-C500 with Hostlink protocol	€20
<b>EZP-ARCOL-CBL</b>	10 ft. Aromat Mewtool COM	€20
<b>EZP-CTRLUNI-CBL</b>	10 ft. Control Techniques (Emerson) RS422 4 wire	€20
<b>EZP-CTCBI-CBL</b>	10 ft. CTC Binary, RS232	€20
<b>EZP-IDECM-CBL</b>	10 ft. IDEC Micro, 8 pin mini DIN	€20
<b>EZP-MODUNI-CBL</b>	10 ft. Modicon Uni-Telway	€20
<b>EZP-MODRTU-CBL</b>	10 ft. Modbus RTU	€20
<b>EZP-MODTCP-CBL</b>	10 ft. Modbus TCP/IP	€20
<b>EZP-S7200-CBL</b>	10 ft. Siemens S7 200	€20
<b>EZP-SYMAX-CBL</b>	10 ft. Square D Symax	€20
<b>EZP-TX505-CBL</b>	10 ft. Texas Instrument 505	€20
<b>EZP-CTRLUNI-CBL-1</b>	10 ft. Control Technologies RS485, 2 wire	€20
<b>EZP-IDECS-CBL</b>	10 ft. IDEC Smart	€20
<b>EZP-TX545-CBL</b>	10 ft. Texas Instrument 545-1102, RS422	€20
<b>EZP-TX545-CBL1</b>	10 ft. Texas Instrument 545-1104, RS422	€20
<b>EZP-MODRJ-CBL</b>	10 ft. RS232 15 pin D-shell male to RJ45	€20

## EZCE Touchpanel Accessories

Part Number	Description	Price
<b>EZP-PANELEDIT</b>	EZPanel/EZCE Touchpanel Programming Software	€99
<b>EZC-TOUCHPANEL-M</b>	Hardware User Manual	€15
<b>EZP-BAT</b>	Replacement 1/2 AA, 3.6 volt Lithium Battery	€20
<b>EZP-BRK-1</b>	Optional DIN Mounting Clips (pk. of 2, 6" models only)	€15
<b>EZ-PANEL-STUDS</b>	Spare mounting studs (four with nuts)	€8
<b>EZP-6SLIMF-GSK</b>	(6") Slim bezel replacement gasket	€8
<b>EZP-8SLIMF-GSK</b>	(8") Slim bezel replacement gasket	€25
<b>EZP-10SLIMF-GSK</b>	(10") Slim bezel replacement gasket	€30
<b>EZP-15SLIMF-GSK</b>	(15") Slim bezel replacement gasket	€34
<b>EZP-COV6</b>	Pack of 3 protective shields for any 6" panel	€20
<b>EZP-COV8</b>	Pack of 3 protective shields for any 8" panel	€34
<b>EZP-COV10</b>	Pack of 3 protective shields for any 10" panel	€38
<b>EZP-COV15</b>	Pack of 3 protective shields for any 15" panel	€56

## Battery Replacement



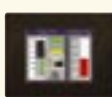
3.6 volt high energy Lithium battery is used to provide back-up power for program storage in the system RAM. EZCE Touchpanel has a low battery indicator on the screen. It is recommended that the battery is replaced every five years.



**MAKING OPERATORS HAPPY**






# EZCE Touchpanel Selection Guide and Specifications

EZCE Touchpanel 6-inch Model Specifications					
<b>Part Number</b>	<u>Windows CE.NET 4.2 Core</u> <b>EZC-S6W-S</b> (Non-expandable) €699 <b>EZC-S6W-SU</b> (Universal Ethernet) €1098 <u>Windows CE.NET 4.2 Core Pro Plus</u> <b>EZC-S6W-E</b> (Full Featured) €799 <b>EZC-S6W-EU</b> (Universal Ethernet) €1198	<u>Windows CE.NET 4.2 Core</u> <b>EZC-S6M-S</b> (Full Featured) €799 <b>EZC-S6M-SD</b> (DeviceNet) €1699 <b>EZC-S6M-SH</b> (DH+) €1299 <b>EZC-S6M-SM</b> (Modbus Plus) €1299 <b>EZC-S6M-SP</b> (Profibus) €1699 <b>EZC-S6M-SC</b> (CC Link) €1299 <b>EZC-S6M-SU</b> (Universal Ethernet) €1198 <u>Windows CE.NET 4.2 Core Pro Plus</u> <b>EZC-S6M-E</b> (Full Featured) €899 <b>EZC-S6M-ED</b> (DeviceNet) €1799 <b>EZC-S6M-EH</b> (DH+) €1399 <b>EZC-S6M-EM</b> (Modbus Plus) €1399 <b>EZC-S6M-EP</b> (Profibus) €1799 <b>EZC-S6M-EC</b> (CC Link) €1399 <b>EZC-S6M-EU</b> (Universal Ethernet) €1298	<u>Windows CE.NET 4.2 Core</u> <b>EZC-S6C-S</b> (Full Featured) €899 <b>EZC-S6C-SD</b> (DeviceNet) €1799 <b>EZC-S6C-SH</b> (DH+) €1399 <b>EZC-S6C-SM</b> (Modbus Plus) €1399 <b>EZC-S6C-SP</b> (Profibus) €1799 <b>EZC-S6C-SC</b> (CC Link) €1399 <b>EZC-S6C-SU</b> (Universal Ethernet) €1298 <u>Windows CE.NET 4.2 Core Pro Plus</u> <b>EZC-S6C-E</b> (Full Featured) €999 <b>EZC-S6C-ED</b> (DeviceNet) €1899 <b>EZC-S6C-EH</b> (DH+) €1499 <b>EZC-S6C-EM</b> (Modbus Plus) €1499 <b>EZC-S6C-EP</b> (Profibus) €1899 <b>EZC-S6C-EC</b> (CC Link) €1499 <b>EZC-S6C-EU</b> (Universal Ethernet) €1398	<u>Windows CE.NET 4.2 Core</u> <b>EZC-T6C-S</b> (Full Featured) €1299 <b>EZC-T6C-SD</b> (DeviceNet) €2199 <b>EZC-T6C-SH</b> (DH+) €1799 <b>EZC-T6C-SM</b> (Modbus Plus) €1799 <b>EZC-T6C-SP</b> (Profibus) €2199 <b>EZC-T6C-SC</b> (CC Link) €1799 <b>EZC-T6C-SU</b> (Universal Ethernet) €1698 <u>Windows CE.NET 4.2 Core Pro Plus</u> <b>EZC-T6C-E</b> (Full Featured) €1399 <b>EZC-T6C-ED</b> (DeviceNet) €2299 <b>EZC-T6C-EH</b> (DH+) €1899 <b>EZC-T6C-EM</b> (Modbus Plus) €1899 <b>EZC-T6C-EP</b> (Profibus) €2299 <b>EZC-T6C-EC</b> (CC Link) €1899 <b>EZC-T6C-EU</b> (Universal Ethernet) €1798	
					
	<b>Specification</b>	6" white on blue	6" slim bezel gray scale	6" color slim bezel	
	<b>Display Type</b>	5.7" STN (White on Blue)	5.7" STN (Monochrome)	5.7" STN (18 bit colors)	5.7" TFT (18 bit colors)
	<b>Enclosure</b>	NEMA 4, 4X			
	<b>Display View Area</b>	4.72"x3.5" (119.4x88.9 mm)		4.65"x3.5" (118.1 x 88.9mm)	
	<b>Screen Pixels</b>	320x240			
	<b>Brightness/Life</b>	140 nits/25,000 hours		180 nits/25,000 hours	400 nits/50,000 hours
	<b>Touch Screen</b>	Analog Resistive Touch Screen			
	<b>CPU Type</b>	AMD 333 MHz 32 Bit CPU			
	<b>Service Power</b>	24VDC (20-30VDC operating range), 1.2A switching supply recommended		24VDC (20-30VDC operating range), 1.5A switching supply recommended	
	<b>Power</b>	10 watts @ 24VDC	12 watts @ 24VDC	13 Watts @ 24VDC	15 Watts @ 24VDC
	<b>Agency Approval</b>	UL, CUL, CE pending			
	<b>Operating Temp.</b>	0 to 55°C			-10° to 60°C
<b>Storage Temp.</b>	-20° to 65°C				
<b>Humidity</b>	10-95% RH, noncondensing				
<b>Electrical Noise</b>	NEMA ICS 2-230 showering arc ANSI C37.90a-1974 SWC Level C Chattering Relay Test				
<b>Withstand Voltage</b>	1000VDC (1 minute), between power supply input terminal and protective ground (FG)				
<b>Insulation Res.</b>	Over 20 MΩ, between power supply input and terminal and protective ground (FG)				
<b>Vibration</b>	5 to 55Hz 3G for 2 hours in the X, Y and Z axes				
<b>Shock</b>	20G for under 12ms in the X, Y and Z axes				
<b>User Memory</b>	32 MB Built-in Flash; 64 MB RAM				
<b>Num. of Screens</b>	Up to 999 limited by memory				
<b>Real Time Clock</b>	Built into panel (PLC clock is still accessible if available)				
<b>Screen Saver</b>	Yes, Backlight off				
<b>Serial Communications</b>	PLC port: RS-232/RS-422/RS-485 15-pin D-sub (female)				
	Download/program port: RS-232/RS-422/RS-485 9-pin D-sub (female)				
<b>External Dimensions</b>	6.145"x8.048"x2.433" (156.078x204.407x51.786mm)				
<b>Weight</b>	1.7 lbs				

# EZCE Touchpanel Selection Guide and Specifications

## EZCE Touchpanel 8, 10 and 15-inch Model Specifications

Part Number	Windows CE.NET 4.2 Core		Windows CE.NET 4.2 Core		Windows CE.NET 4.2 Core		Windows CE.NET 4.2 Core	
	EZC-S8C-S (Full Featured)	€1399	EZC-T8C-S (Full Featured)	€1599	EZC-T10C-S (Full Featured)	€1899	EZC-T15C-S (Full Featured)	€2699
	EZC-S8C-SD (DeviceNet)	€2299	EZC-T8C-SD (DeviceNet)	€2499	EZC-T10C-SD (DeviceNet)	€2799	EZC-T15C-SD (DeviceNet)	€3599
	EZC-S8C-SH (DH+)	€1899	EZC-T8C-SH (DH+)	€2099	EZC-T10C-SH (DH+)	€2399	EZC-T15C-SH (DH+)	€3199
	EZC-S8C-SM (Modbus Plus)	€1899	EZC-T8C-SM (Modbus Plus)	€2099	EZC-T10C-SM (Modbus Plus)	€2399	EZC-T15C-SM (Modbus Plus)	€3199
	EZC-S8C-SP (Profibus)	€2299	EZC-T8C-SP (Profibus)	€2499	EZC-T10C-SP (Profibus)	€2799	EZC-T15C-SP (Profibus)	€3599
	EZC-S8C-SC (CC Link)	€1899	EZC-T8C-SC (CC Link)	€2099	EZC-T10C-SC (CC Link)	€2399	EZC-T15C-SC (CC Link)	€3199
	EZC-S8C-SU (Universal Ethernet)	€1798	EZC-T8C-SU (Universal Ethernet)	€1998	EZC-T10C-SU (Universal Ethernet)	€2298	EZC-T15C-SU (Universal Ethernet)	€3098
	Windows CE.NET 4.2 Core Pro Plus		Windows CE.NET 4.2 Core Pro Plus		Windows CE.NET 4.2 Core Pro Plus		Windows CE.NET 4.2 Core Pro Plus	
	EZC-S8C-E (Full Featured)	€1499	EZC-T8C-E (Full Featured)	€1699	EZC-T10C-E (Full Featured)	€1999	EZC-T15C-E (Full Featured)	€2799
	EZC-S8C-ED (DeviceNet)	€2399	EZC-T8C-ED (DeviceNet)	€2599	EZC-T10C-ED (DeviceNet)	€2899	EZC-T15C-ED (DeviceNet)	€3699
	EZC-S8C-EH (DH+)	€1999	EZC-T8C-EH (DH+)	€2199	EZC-T10C-EH (DH+)	€2499	EZC-T15C-EH (DH+)	€3299
	EZC-S8C-EM (Modbus Plus)	€1999	EZC-T8C-EM (Modbus Plus)	€2199	EZC-T10C-EM (Modbus Plus)	€2499	EZC-T15C-EM (Modbus Plus)	€3299
	EZC-S8C-EP (Profibus)	€2399	EZC-T8C-EP (Profibus)	€2599	EZC-T10C-EP (Profibus)	€2899	EZC-T15C-EP (Profibus)	€3699
	EZC-S8C-EC (CC Link)	€1999	EZC-T8C-EC (CC Link)	€2199	EZC-T10C-EC (CC Link)	€2499	EZC-T15C-EC (CC Link)	€3299
	EZC-S8C-EU (Universal Ethernet)	€1898	EZC-T8C-EU (Universal Ethernet)	€2098	EZC-T10C-EU (Universal Ethernet)	€2398	EZC-T15C-EU (Universal Ethernet)	€3198
								
<b>Specification</b>	8" color slim bezel		10" color slim bezel		15" color slim bezel			
<b>Display Type</b>	8.2" STN (18 bit colors)		8" TFT (18 bit colors)		10.4" TFT (18 bit colors)		15.0" TFT (18 bit colors)	
<b>Enclosure</b>	NEMA 4, 4X							
<b>Display View Area</b>	6.65"x5.024" (168.9x127.61 mm)		6.05"x4.55" (153.7x115.8 mm)		8.31"x6.22" (211.07 x 158mm)		12.02"x9.01" (305.28 x 228.96mm)	
<b>Screen Pixels</b>	640x480						1024x768	
<b>Brightness/Life</b>	200 nits/40,000 hours						250 nits/40,000 hours	
<b>Touch Screen</b>	Analog Resistive Touch Screen							
<b>CPU Type</b>	AMD 333 MHz 32-bit CPU							
<b>Service Power</b>	24VDC (20-30VDC operating range), 1.5A switching supply recommended							
<b>Power</b>	16 Watts @ 24VDC			18 Watts @ 24VDC			20 Watts @ 24VDC	
<b>Agency Approval</b>	UL, CUL, CE (pending)							
<b>Operating Temp.</b>	-10° to 60°C							
<b>Storage Temp.</b>	-20° to 65°C							
<b>Humidity</b>	10-95% RH, noncondensing							
<b>Electrical Noise</b>	NEMA ICS 2-230 showering arc ANSI C37.90a-1974 SWC Level C Chattering Relay Test							
<b>Withstand Voltage</b>	1000VDC (1 minute), between power supply input terminal and protective ground (FG)							
<b>Insulation Res.</b>	Over 20 MΩ, between power supply input and terminal and protective ground (FG)							
<b>Vibration</b>	5 to 55Hz 3G for 2 hours in the X, Y and Z axes							
<b>Shock</b>	20G for under 12ms in the X, Y and Z axes							
<b>User Memory</b>	32 MB Built-in Flash; 64 MB RAM							
<b>Num. of Screens</b>	Up to 999 limited by memory							
<b>Real Time Clock</b>	Built into panel (PLC clock is still accessible if available)							
<b>Screen Saver</b>	Yes, Backlight off							
<b>Serial Communications</b>	PLC port: RS-232/RS-422/RS-485 15-pin D-sub (female)							
	Download/program port: RS-232/RS-422/RS-485 9-pin D-sub (female)							
<b>External Dimensions</b>	8.748"x10.894"x2.289" (222.199x276.708x58.136mm)			10.59"x13.58"x2.86" (268.99x344.93x72.64mm)			13.00"x16.75"x4.66" (330.2 x 425.45 x 118.36mm)	
<b>Weight</b>	2.9 lbs			3.8 lbs			7 lbs	

# EZCE Touchpanel 6" White on Blue

## 6" White on Blue EZCE Touchpanel - Slim Bezel (5.7" STN)

EZCE Touchpanel's 6" slim bezel White on Blue panel has a 5.7" diagonal touch screen with 320x240 pixel resolution. This panel has an LCD (liquid crystal display) and is available for serial drivers or Universal Ethernet (Ethernet/IP, DF1 over Ethernet, MODBUS TCP/IP or GE SRTP). This panel has a very low slim profile along with a smaller footprint on enclosures.



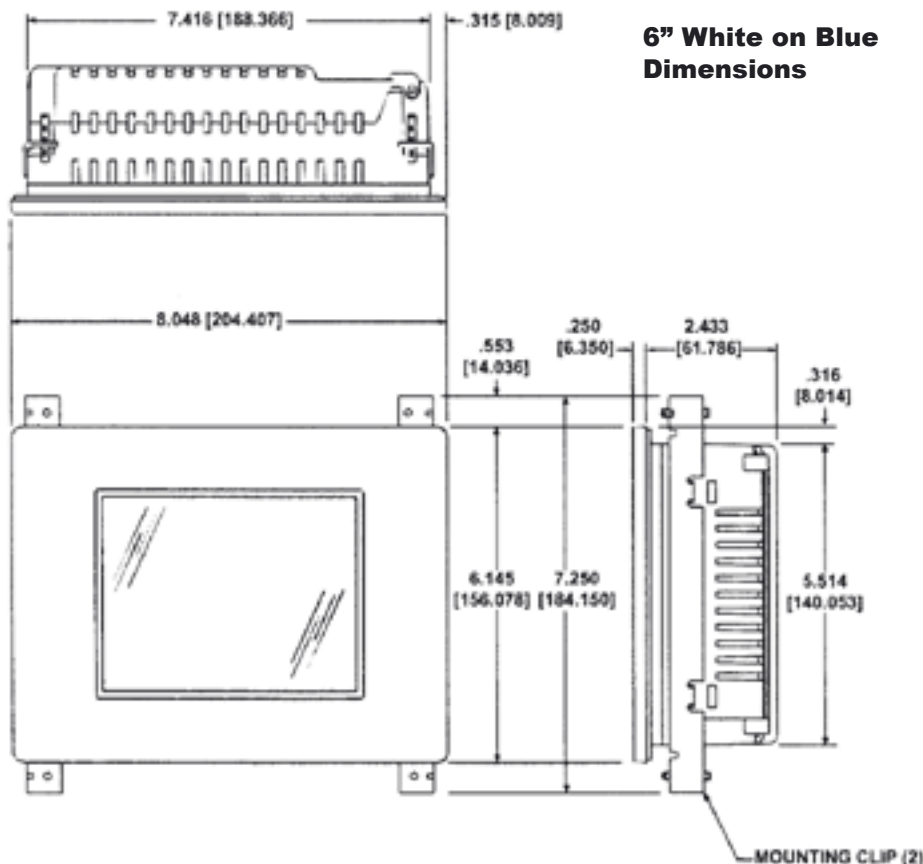
### 6" White on Blue models feature:

- 5.7" diagonal LCD
- NEMA 4, 4X
- 320x240 pixel resolution
- 140 nits brightness
- 25,000 hour expected bulb half-life
- Analog resistive touch screen
- 1/4" gasket and four DIN mounting clips for NEMA 4/4X
- 2.43" installed depth
- Has all EZPanel Enhanced objects
- Has all 4,000 Library symbols
- Programmed with either EZPanel Enhanced software or EZTouch Programming software

Part Number	Description	Price
EZC-S6W-S	6" Mono White-on-blue display, CE 4.2 Core, Nema 4, 4X	€699
EZC-S6W-SU	6" Mono White-on-blue display, CE 4.2 Core, Universal Ethernet, Nema 4, 4X	€1,098
EZC-S6W-E	6" Mono White-on-blue display, Enhanced CE 4.2 PP, Nema 4, 4X	€799
EZC-S6W-EU	6" Mono White-on-blue display, Enhanced CE 4.2 PP, Universal Ethernet, Nema 4, 4X	€1,198

### Enhanced CE Touchpanels with Windows CE Professional Plus offer:

- File viewers such as Acrobat, Excel, Word, PowerPoint, Image and Internet Explorer for Windows CE



6" White on Blue Dimensions

# EZCE Touchpanel 6" Monochrome

## 6" Monochrome EZCE Touchpanel - Slim Bezel (5.7" STN)

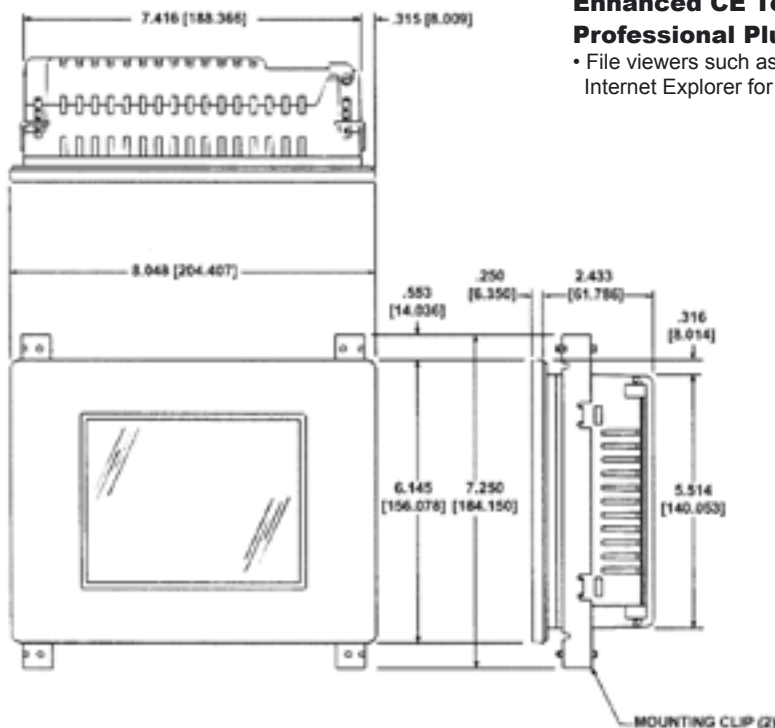
EZCE Touchpanel's 6" slim bezel panels have a 5.7" diagonal touch screen with 320x240 pixel resolution. These panels have an STN LCD (liquid crystal display) and are available for serial drivers or Universal Ethernet (Ethernet/IP, DF1 over Ethernet, MODBUS TCP/IP or GE SRTP). In addition, these panels have the capability of interfacing to industrial networks like DH+, Remote I/O, Modbus Plus, DeviceNet, CC Link, Profibus, etc. All these panels have a very low slim profile along with a smaller footprint on enclosures.

### 6" Mono models feature:

- 5.7" diagonal mono STN LCD
- NEMA 4, 4X
- 320x240 pixel resolution
- Analog resistive touch screen
- 140 nits brightness
- 25,000 hour expected bulb half-life
- 1/4" gasket and four DIN mounting clips
- 2.43" installed depth
- Has all EZPanel Enhanced objects
- Has all 4,000 Library symbols
- Programmed with either EZPanel Enhanced software or EZTouch Programming software



Part Number	Description	Price
<b>EZC-S6M-S</b>	6" Mono Gray scale, CE 4.2 Core, Nema 4, 4X	€799
<b>EZC-S6M-SD</b>	6" Mono Gray scale, CE 4.2 Core, DeviceNet, Nema 4, 4X	€1,699
<b>EZC-S6M-SH</b>	6" Mono Gray scale, CE 4.2 Core, DH+, Nema 4, 4X	€1,299
<b>EZC-S6M-SM</b>	6" Mono Gray scale, CE 4.2 Core, MB+, Nema 4, 4X	€1,299
<b>EZC-S6M-SP</b>	6" Mono Gray scale, CE 4.2 Core, Profibus, Nema 4, 4X	€1,699
<b>EZC-S6M-SC</b>	6" Mono Gray scale, CE 4.2 Core, CCLink, Nema 4, 4X	€1,299
<b>EZC-S6M-SU</b>	6" Mono Gray scale, CE 4.2 Core, Universal Ethernet, Nema 4, 4X	€1,198
<b>EZC-S6M-E</b>	6" Mono Gray scale, Enhanced CE 4.2 PP, Nema 4, 4X	€899
<b>EZC-S6M-ED</b>	6" Mono Gray scale, Enhanced CE 4.2 PP, DeviceNet, Nema 4, 4X	€1,799
<b>EZC-S6M-EH</b>	6" Mono Gray scale, Enhanced CE 4.2 PP, DH+, Nema 4, 4X	€1,399
<b>EZC-S6M-EM</b>	6" Mono Gray scale, Enhanced CE 4.2 PP, MB+, Nema 4, 4X	€1,399
<b>EZC-S6M-EP</b>	6" Mono Gray scale, Enhanced CE 4.2 PP, Profibus, Nema 4, 4X	€1,799
<b>EZC-S6M-EC</b>	6" Mono Gray scale, Enhanced CE 4.2 PP, CCLink, Nema 4, 4X	€1,399
<b>EZC-S6M-EU</b>	6" Mono Gray scale, Enhanced CE 4.2 PP, Universal Ethernet, Nema 4, 4X	€1,298



### Enhanced CE Touchpanels with Windows CE Professional Plus offer:

- File viewers such as Acrobat, Excel, Word, PowerPoint, Image and Internet Explorer for Windows CE

### 6" Mono Dimensions



# EZCE Touchpanel 6" STN Color

## 6" Color EZCE Touchpanel - Slim Bezel (5.7" STN)

EZCE Touchpanel's 6" slim bezel panels have a 5.7" diagonal touch screen with 320x240 pixel resolution. These panels have a STN LCD (liquid crystal display) and are available for serial drivers or Universal Ethernet (Ethernet/IP, DF1 over Ethernet, MODBUS TCP/IP or GE SRTP). In addition, these panels have the capability of interfacing to industrial networks like DH+, Remote I/O, Modbus Plus, DeviceNet, CC Link, Profibus, etc. All these panels have a very low slim profile along with a smaller footprint on enclosures.



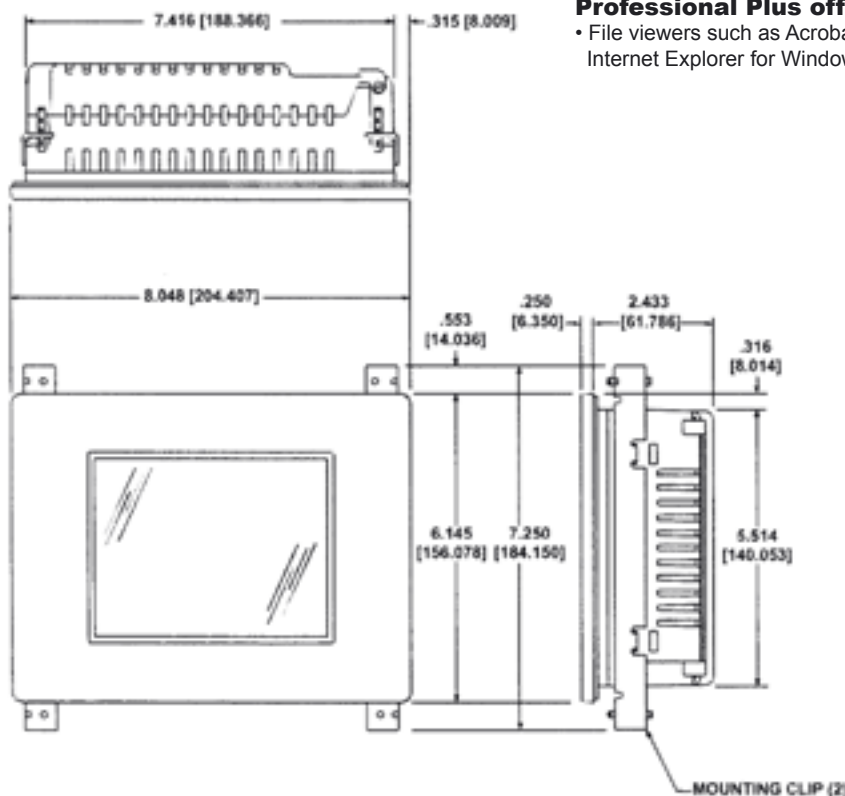
### 6" STN Color models feature:

- 5.7" diagonal color STN LCD
- Low-profile slim bezel design
- 18 bit colors
- NEMA 4, 4X
- 320x240 pixel resolution
- 180 nits brightness
- 25,000 hour expected bulb half-life
- Analog resistive touch screen
- 1/4" gasket and four DIN mounting clips
- 2.43" installed depth
- Has all EZPanel Enhanced objects
- Has all 4,000 Library symbols
- Programmed with either EZPanel Enhanced software or EZTouch Programming software

Part Number	Description	Price
EZC-S6C-S	6" Color STN, CE 4.2 Core, Nema 4, 4X	€999
EZC-S6C-SD	6" Color STN, CE 4.2 Core, DeviceNet, Nema 4, 4X	€1,799
EZC-S6C-SH	6" Color STN, CE 4.2 Core, DH+, Nema 4, 4X	€1,399
EZC-S6C-SM	6" Color STN, CE 4.2 Core, MB+, Nema 4, 4X	€1,399
EZC-S6C-SP	6" Color STN, CE 4.2 Core, Profibus, Nema 4, 4X	€1,799
EZC-S6C-SC	6" Color STN, CE 4.2 Core, CCLink, Nema 4, 4X	€1,399
EZC-S6C-SU	6" Color STN, CE 4.2 Core, Universal Ethernet, Nema 4, 4X	€1,298
EZC-S6C-E	6" Color STN, Enhanced CE 4.2 PP, Nema 4, 4X	€999
EZC-S6C-ED	6" Color STN, Enhanced CE 4.2 PP, DeviceNet, Nema 4, 4X	€1,899
EZC-S6C-EH	6" Color STN, Enhanced CE 4.2 PP, DH+, Nema 4, 4X	€1,499
EZC-S6C-EM	6" Color STN, Enhanced CE 4.2 PP, MB+, Nema 4, 4X	€1,499
EZC-S6C-EP	6" Color STN, Enhanced CE 4.2 PP, Profibus, Nema 4, 4X	€1,899
EZC-S6C-EC	6" Color STN, Enhanced CE 4.2 PP, CCLink, Nema 4, 4X	€1,499
EZC-S6C-EU	6" Color STN, Enhanced CE 4.2 PP, Universal Ethernet, Nema 4, 4X	€1,398

### Enhanced CE Touchpanels with Windows CE Professional Plus offer:

- File viewers such as Acrobat, Excel, Word, PowerPoint, Image and Internet Explorer for Windows CE



6" STN Color Dimensions



# EZCE Touchpanel 6" TFT Color

## 6" Color EZCE Touchpanel - Slim Bezel (5.7" TFT)

EZCE Touchpanel's 6" slim bezel panels have a 5.7" diagonal touch screen with 320x240 pixel resolution. This model is a new addition to EZCE Touchpanel line with a TFT LCD (liquid crystal display) and are available for serial drivers or Universal Ethernet (Ethernet/IP, DF1 over Ethernet, MODBUS TCP/IP or GE SRTP). In addition, these panels have the capability of interfacing to industrial networks like DH+, Remote I/O, Modbus Plus, DeviceNet, CC Link, Profibus, etc. All these panels have a very low slim profile along with a smaller footprint on enclosures.



## 6" TFT Color models feature:

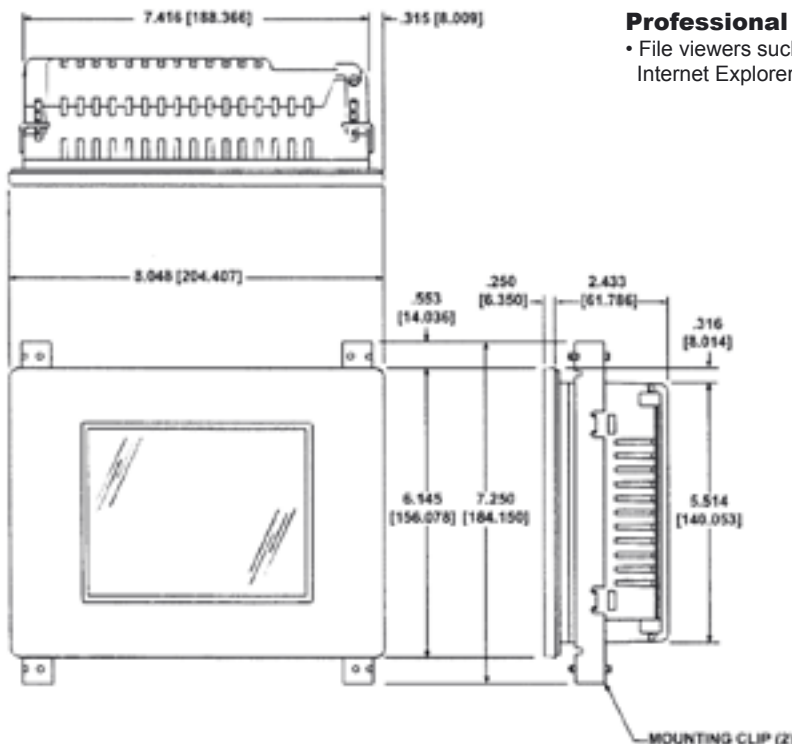
- 5.7" diagonal color TFT LCD
- Low-profile slim bezel design
- 18 bit colors
- NEMA 4, 4X
- 320x240 pixel resolution
- 200 nits brightness
- 50,000 hour expected bulb half-life
- Analog resistive touch screen
- 1/4" gasket and four DIN mounting clips
- 2.43" installed depth
- Has all EZPanel Enhanced objects
- Has all 4,000 Library symbols
- Programmed with either EZPanel Enhanced software or EZTouch Programming software

Part Number	Description	Price
<b>EZC-T6C-S</b>	6" Color TFT, CE 4.2 Core, Nema 4, 4X	€1,299
<b>EZC-T6C-SD</b>	6" Color TFT, CE 4.2 Core, DeviceNet, Nema 4, 4X	€2,199
<b>EZC-T6C-SH</b>	6" Color TFT, CE 4.2 Core, DH+, Nema 4, 4X	€1,799
<b>EZC-T6C-SM</b>	6" Color TFT, CE 4.2 Core, MB+, Nema 4, 4X	€1,799
<b>EZC-T6C-SP</b>	6" Color TFT, CE 4.2 Core, Profibus, Nema 4, 4X	€2,199
<b>EZC-T6C-SC</b>	6" Color TFT, CE 4.2 Core, CCLink, Nema 4, 4X	€1,799
<b>EZC-T6C-SU</b>	6" Color TFT, CE 4.2 Core, Universal Ethernet, Nema 4, 4X	€1,698
<b>EZC-T6C-E</b>	6" Color TFT, Enhanced CE 4.2 PP, Nema 4, 4X	€1,399
<b>EZC-T6C-ED</b>	6" Color TFT, Enhanced CE 4.2 PP, DeviceNet, Nema 4, 4X	€2,299
<b>EZC-T6C-EH</b>	6" Color TFT, Enhanced CE 4.2 PP, DH+, Nema 4, 4X	€1,899
<b>EZC-T6C-EM</b>	6" Color TFT, Enhanced CE 4.2 PP, MB+, Nema 4, 4X	€1,899
<b>EZC-T6C-EP</b>	6" Color TFT, Enhanced CE 4.2 PP, Profibus, Nema 4, 4X	€2,299
<b>EZC-T6C-EC</b>	6" Color TFT, Enhanced CE 4.2 PP, CCLink, Nema 4, 4X	€1,899
<b>EZC-T6C-EU</b>	6" Color TFT, Enhanced CE 4.2 PP, Universal Ethernet, Nema 4, 4X	€1,798

## Enhanced CE Touchpanels with Windows CE

### Professional Plus offer:

- File viewers such as Acrobat, Excel, Word, PowerPoint, Image and Internet Explorer for Windows CE



**6" TFT Color Dimensions**

# EZCE Touchpanel 8" STN Color

## 8" Color EZCE Touchpanel - Slim Bezel (8.2" STN)

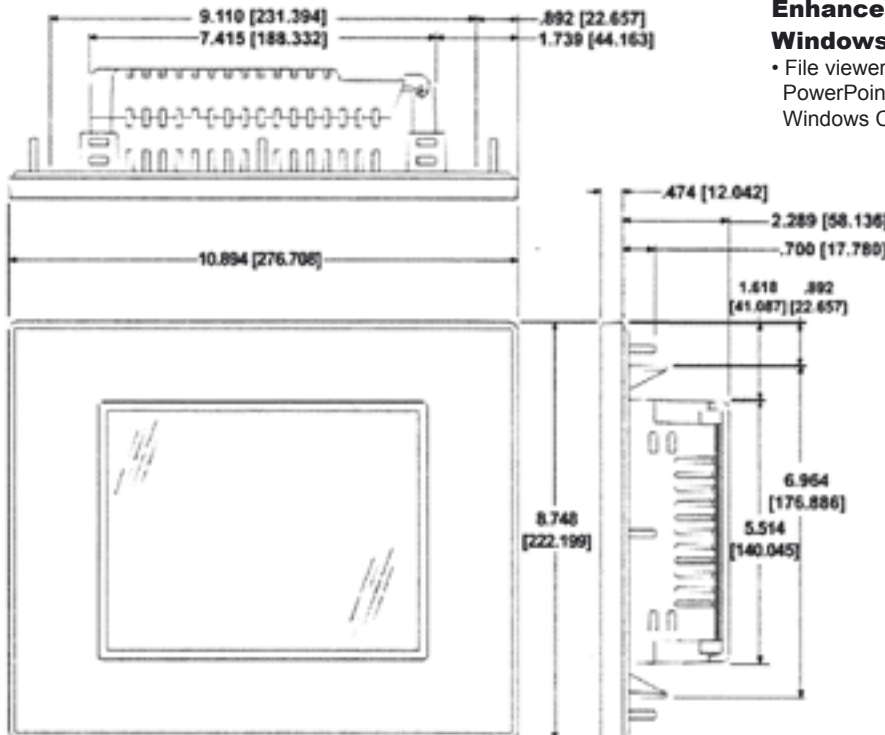
The 8" color EZCE Touchpanel slim bezel panels have a 8.2" diagonal touch screen, with a 640x480 pixel resolution and feature a STN LCD (liquid crystal display) and are available for serial drivers or Universal Ethernet (Ethernet/IP, DF1 over Ethernet, MODBUS TCP/IP or GE SRTP). In addition, these panels have the capability of interfacing to industrial networks like DH+, Remote I/O, Modbus Plus, DeviceNet, CC Link, Profibus, etc. All these panels have a very low slim profile along with a smaller footprint on enclosures.



### Features

- 8.2" diagonal color STN LCD
- Nema 4, 4X
- Low-profile slim bezel design
- 18 bit colors
- 640x480 pixel resolution
- 140 nits brightness
- 25,000 hour expected bulb half-life
- Analog resistive touch screen
- 1/4" O-ring gasket and eight mounting studs for NEMA 4, 4X (indoor)
- 2.29" installed depth
- Has all EZPanel Enhanced objects
- Has all 4,000 Library symbols
- Programmed with either EZPanel Enhanced software or EZTouch Programming software

Part Number	Description	Price
EZC-S8C-S	8" Color STN, CE 4.2 Core, Nema 4,4x	€1,399
EZC-S8C-SD	8" Color STN, CE 4.2 Core, DeviceNet, Nema 4,4x	€2,299
EZC-S8C-SH	8" Color STN, CE 4.2 Core, DH+, Nema 4,4x	€1,899
EZC-S8C-SM	8" Color STN, CE 4.2 Core, MB+, Nema 4,4x	€1,899
EZC-S8C-SP	8" Color STN, CE 4.2 Core, Profibus, Nema 4,4x	€2,299
EZC-S8C-SC	8" Color STN, CE 4.2 Core, CCLink, Nema 4,4x	€1,899
EZC-S8C-SU	8" Color STN, CE 4.2 Core, Universal Ethernet, Nema 4,4x	€1,798
EZC-S8C-E	8" Color STN, Enhanced CE 4.2 PP, Nema 4,4x	€1,499
EZC-S8C-ED	8" Color STN, Enhanced CE 4.2 PP, DeviceNet, Nema 4,4x	€2,399
EZC-S8C-EH	8" Color STN, Enhanced CE 4.2 PP, DH+, Nema 4,4x	€1,999
EZC-S8C-EM	8" Color STN, Enhanced CE 4.2 PP, MB+, Nema 4,4x	€1,999
EZC-S8C-EP	8" Color STN, Enhanced CE 4.2 PP, Profibus, Nema 4,4x	€2,399
EZC-S8C-EC	8" Color STN, Enhanced CE 4.2 PP, CCLink, Nema 4,4x	€1,999
EZC-S8C-EU	8" Color STN, Enhanced CE 4.2 PP, Universal Ethernet, Nema 4,4x	€1,898



### Enhanced CE Touchpanels with Windows CE Professional Plus offer:

- File viewers such as Acrobat, Excel, Word, PowerPoint, Image and Internet Explorer for Windows CE

### 8.2" STN Color Dimensions

# EZCE Touchpanel 8" TFT Color

## 8" Color EZCE Touchpanel - Slim Bezel (8" TFT)

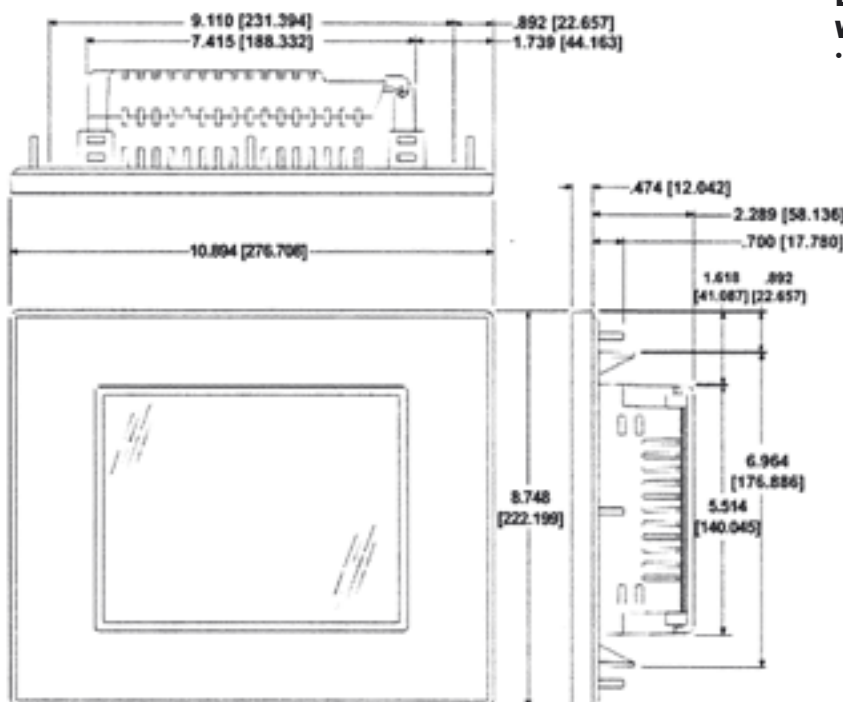
EZCE Touchpanel's 8" slim bezel panels have a 8" diagonal touch screen with 640x480 pixel resolution. This model is a new addition to EZCE Touchpanel line with a TFT LCD (liquid crystal display) and are available for serial drivers or Universal Ethernet (Ethernet/IP, DF1 over Ethernet, MODBUS TCP/IP or GE SRTP). In addition, these panels have the capability of interfacing to industrial networks like DH+, Remote I/O, Modbus Plus, DeviceNet, CC Link, Profibus, etc. All these panels have a very low slim profile along with a smaller footprint on enclosures.



## Features

- 8" diagonal color TFT LCD
- Low-profile slim bezel design
- 18 bit colors
- 640x480 pixel resolution
- 200 nits brightness
- 40,000 hour expected bulb half-life
- Analog resistive touch screen
- 1/4" O-ring gasket and eight mounting studs for NEMA 4, 4X (indoor)
- 2.29" installed depth
- Has all EZPanel Enhanced objects
- Has all 4,000 Library symbols
- Programmed with either EZPanel Enhanced software or EZTouch Programming software

Part Number	Description	Price
<b>EZC-T8C-S</b>	8" Color TFT, CE 4.2 Core, Nema 4,4x	€1,599
<b>EZC-T8C-SD</b>	8" Color TFT, CE 4.2 Core, DeviceNet, Nema 4,4x	€2,499
<b>EZC-T8C-SH</b>	8" Color TFT, CE 4.2 Core, DH+, Nema 4,4x	€2,099
<b>EZC-T8C-SM</b>	8" Color TFT, CE 4.2 Core, MB+, Nema 4,4x	€2,099
<b>EZC-T8C-SP</b>	8" Color TFT, CE 4.2 Core, Profibus, Nema 4,4x	€2,499
<b>EZC-T8C-SC</b>	8" Color TFT, CE 4.2 Core, CCLink, Nema 4,4x	€2,099
<b>EZC-T8C-SU</b>	8" Color TFT, CE 4.2 Core, Universal Ethernet, Nema 4,4x	€1,998
<b>EZC-T8C-E</b>	8" Color TFT, Enhanced CE 4.2 PP, Nema 4,4x	€1,699
<b>EZC-T8C-ED</b>	8" Color TFT, Enhanced CE 4.2 PP, DeviceNet, Nema 4,4x	€2,599
<b>EZC-T8C-EH</b>	8" Color TFT, Enhanced CE 4.2 PP, DH+, Nema 4,4x	€2,199
<b>EZC-T8C-EM</b>	8" Color TFT, Enhanced CE 4.2 PP, MB+, Nema 4,4x	€2,199
<b>EZC-T8C-EP</b>	8" Color TFT, Enhanced CE 4.2 PP, Profibus, Nema 4,4x	€2,599
<b>EZC-T8C-EC</b>	8" Color TFT, Enhanced CE 4.2 PP, CCLink, Nema 4,4x	€2,199
<b>EZC-T8C-EU</b>	8" Color TFT, Enhanced CE 4.2 PP, Universal Ethernet, Nema 4,4x	€2,098



## Enhanced CE Touchpanels with Windows CE Professional Plus offer:

- File viewers such as Acrobat, Excel, Word, PowerPoint, Image and Internet Explorer for Windows CE

## 8" TFT Color Dimensions

# EZCE Touchpanel 10" TFT Color

## 10" Color EZCE Touchpanel - Slim Bezel (10.4" TFT)

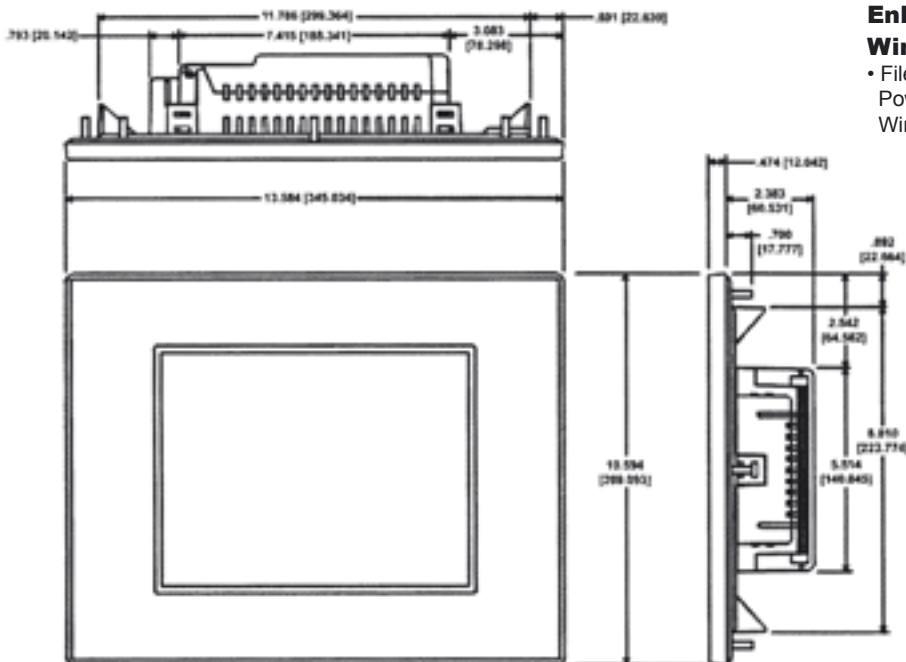
The 10" color EZCE Touchpanel slim bezel panels have a 10.4" diagonal touch screen, with a 640x480 pixel resolution and feature a TFT LCD (liquid crystal display) and are available for serial drivers or Universal Ethernet (Ethernet/IP, DF1 over Ethernet, MODBUS TCP/IP or GE SRTP). In addition, these panels have the capability of interfacing to industrial networks like DH+, Remote I/O, Modbus Plus, DeviceNet, CC Link, Profibus, etc. All these panels have a very low slim profile along with a smaller footprint on enclosures.



### Features

- 10.4" diagonal color TFT LCD
- Low-profile slim bezel design
- 18 bit colors
- 640x480 pixel resolution
- 200 nits brightness
- 40,000 hour expected bulb half-life
- Analog resistive touch screen
- 1/4" O-ring gasket and eight mounting studs for NEMA 4, 4X (indoor)
- 2.86" installed depth
- Has all EZPanel Enhanced objects
- Has all 4,000 Library symbols
- Programmed with either EZPanel Enhanced software or EZTouch Programming software

Part Number	Description	Price
EZC-T10C-S	10" Color TFT, CE 4.2 Core, Nema 4,4x	€1,899
EZC-T10C-SD	10" Color TFT, CE 4.2 Core, DeviceNet, Nema 4,4x	€2,799
EZC-T10C-SH	10" Color TFT, CE 4.2 Core, DH+, Nema 4,4x	€2,399
EZC-T10C-SM	10" Color TFT, CE 4.2 Core, MB+, Nema 4,4x	€2,399
EZC-T10C-SP	10" Color TFT, CE 4.2 Core, Profibus, Nema 4,4x	€2,799
EZC-T10C-SC	10" Color TFT, CE 4.2 Core, CCLink, Nema 4,4x	€2,399
EZC-T10C-SU	10" Color TFT, CE 4.2 Core, Universal Ethernet, Nema 4,4x	€2,298
EZC-T10C-E	10" Color TFT, Enhanced CE 4.2 PP, Nema 4,4x	€1,999
EZC-T10C-ED	10" Color TFT, Enhanced CE 4.2 PP, DeviceNet, Nema 4,4x	€2,899
EZC-T10C-EH	10" Color TFT, Enhanced CE 4.2 PP, DH+, Nema 4,4x	€2,499
EZC-T10C-EM	10" Color TFT, Enhanced CE 4.2 PP, MB+, Nema 4,4x	€2,499
EZC-T10C-EP	10" Color TFT, Enhanced CE 4.2 PP, Profibus, Nema 4,4x	€2,899
EZC-T10C-EC	10" Color TFT, Enhanced CE 4.2 PP, CCLink, Nema 4,4x	€2,499
EZC-T10C-EU	10" Color TFT, Enhanced CE 4.2 PP, Universal Ethernet, Nema 4,4x	€2,398



### Enhanced CE Touchpanels with Windows CE Professional Plus offer:

- File viewers such as Acrobat, Excel, Word, PowerPoint, Image and Internet Explorer for Windows CE

### 10" TFT Color Dimensions

# EZCE Touchpanel 15" TFT Color

## 15" Color EZCE Touchpanel - Slim Bezel (15.0" TFT)

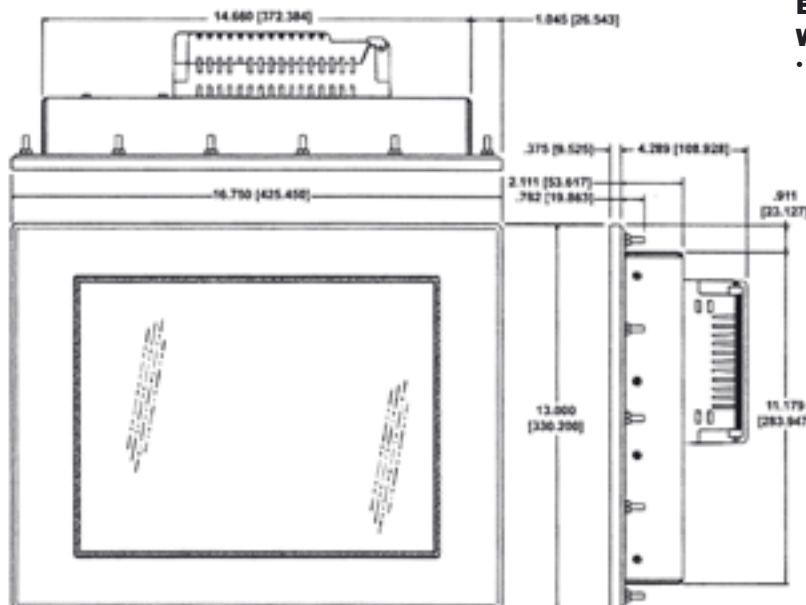
The 15" color EZCE Touchpanel slim bezel panels have a 15.0" diagonal touch screen, with a 1024x768 pixel resolution and feature a TFT LCD (liquid crystal display) and are available for serial drivers or Universal Ethernet (Ethernet/IP, DF1 over Ethernet, MODBUS TCP/IP or GE SRTP). In addition, these panels have the capability of interfacing to industrial networks like DH+, Remote I/O, Modbus Plus, DeviceNet, CC Link, Profibus, etc. All these panels have a very low slim profile along with a smaller footprint on enclosures.



## Features

- 15.0" diagonal color TFT LCD
- Low-profile slim bezel design
- 18 bit colors
- NEMA 4,4x
- 1024x768 pixel resolution
- 250 nits brightness
- 40,000 hour expected bulb half-life
- Analog resistive touch screen
- 1/4" gasket for NEMA 4,4x
- 4.68" installed depth
- Has all EZPanel Enhanced objects
- Has all 4,000 Library symbols
- Programmed with either EZPanel Enhanced software or EZTouch Programming software

Part Number	Description	Price
EZC-T15C-S	15" Color TFT, CE 4.2 Core, Nema 4,4x	€2,699
EZC-T15C-SD	15" Color TFT, CE 4.2 Core, DeviceNet, Nema 4,4x	€3,599
EZC-T15C-SH	15" Color TFT, CE 4.2 Core, DH+, Nema 4,4x	€3,199
EZC-T15C-SM	15" Color TFT, CE 4.2 Core, MB+, Nema 4,4x	€3,199
EZC-T15C-SP	15" Color TFT, CE 4.2 Core, Profibus, Nema 4,4x	€3,599
EZC-T15C-SC	15" Color TFT, CE 4.2 Core, CCLink, Nema 4,4x	€3,199
EZC-T15C-SU	15" Color TFT, CE 4.2 Core, Universal Ethernet, Nema 4,4x	€3,098
EZC-T15C-E	15" Color TFT, Enhanced CE 4.2 PP, Nema 4,4x	€2,799
EZC-T15C-ED	15" Color TFT, Enhanced CE 4.2 PP, DeviceNet, Nema 4,4x	€3,699
EZC-T15C-EH	15" Color TFT, Enhanced CE 4.2 PP, DH+, Nema 4,4x	€3,299
EZC-T15C-EM	15" Color TFT, Enhanced CE 4.2 PP, MB+, Nema 4,4x	€3,299
EZC-T15C-EP	15" Color TFT, Enhanced CE 4.2 PP, Profibus, Nema 4,4x	€3,699
EZC-T15C-EC	15" Color TFT, Enhanced CE 4.2 PP, CCLink, Nema 4,4x	€3,299
EZC-T15C-EU	15" Color TFT, Enhanced CE 4.2 PP, Universal Ethernet, Nema 4,4x	€3,198



## Enhanced CE Touchpanels with Windows CE Professional Plus offer:

- File viewers such as Acrobat, Excel, Word, PowerPoint, Image and Internet Explorer for Windows CE

## 15" TFT Color Dimensions



# Enhanced Customer Support

We wanted to provide you even better customer support than you currently get. To accomplish that, here is what we did:

## Customer Service Hours:

**8:00 to 17:00**

Monday - Friday

**Phone: +49 (0) 2161 464470**

**Fax: +49 (0) 2161 4644719**

**sales@ezautomation.eu.com**



## Same Day Shipping

### For Orders Received By 15:00

Applicable to All Phone, Fax, Email or On-Line Orders

Phone: +49 (0) 2161 464470

Mon - Fri 8:00 - 17:00

Fax: + 49 (0) 2161 4644719

Email: sales@ezautomation.eu.com

On-Line: www.EZAutomation.eu.com

**Picks Up**  
AT **16:00**



## Technical Support

### Tech Support Hours:

**8:00 to 17:00**

Monday - Friday

**Phone: +49 (0) 2161 464470**

**Fax: +49 (0) 2161 4644719**

**techsupport@ezautomation.eu.com**

