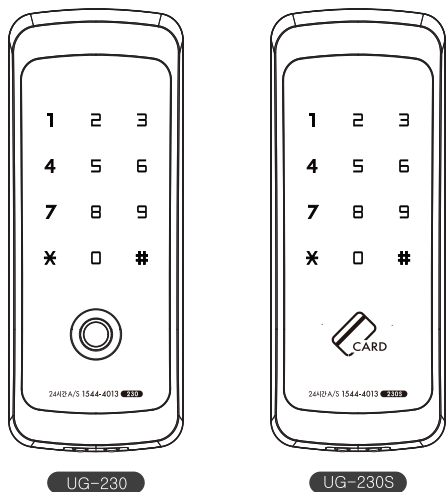


USER MANUAL(UG – 230)

- Diecasting Alloy
- Human Detection System
- Electric Shock Prevention System
- Double Safety System Against Fire
- Imaginary Code System to prevent exposure secret code
- High Quality Individual Lighting Touchpad
- Double Security System



- UG-230 : Secret Code + Digital Touch Key (2W)
- UG-230S : Secret Code + Smart Card (2W)

UNICOR HIGHTECH CO., LTD www.unicor.co.kr

Caution for Safety

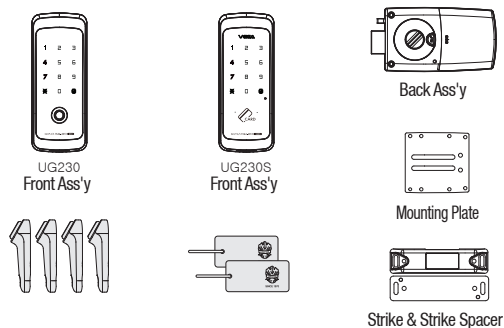


For safety precaution is to ensure the safety of the user due to accident, property damage and prevent inconvenience. Please should read before use it.

- Do not disassemble or alter the lock.
- Do not install where the distance over 5mm between the door and door frame.
- Please do not expose the secret code and change the secret code in regularly.
- Batteries should not be exposed directly to heat sources or flames, or submerged in water, because they may leak or explode, resulting in severe damage. Please do not use damaged batteries.
- Do not press using sharp tools or press numeric button excessively
- Please make sure the batteries are inserted correctly(+/-) as indicated in the battery component. Otherwise, it may cause a leak or explosions.
- Please do not mix old with new batteries or use different types. Always use new alkaline batteries.
- Do not clean the product with flammable materials such as alcohol, benzene or thinners. Such materials may damage the surface or cause a fire.
- Please change all the batteries within 7 days after hear first melody to change battery.

Product Composition

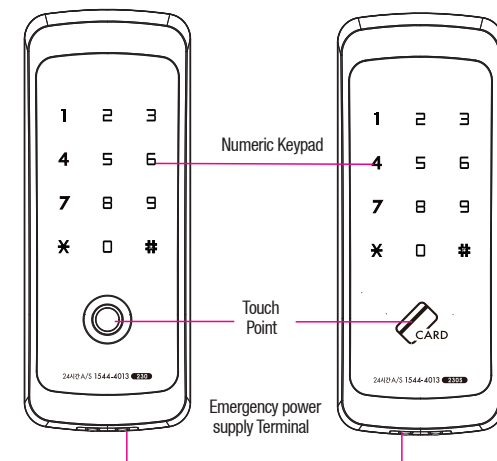
Product composition may be subject to change depending on the installation environment.



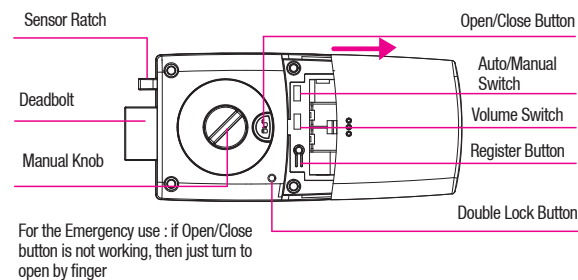
CAUTION

As this is a keyless digital door lock, damage may occur to parts of the dead lock system if it is not used according to the manual. Users should be fully aware of the manual and how to operate this product.

Specification(Front Ass'y)

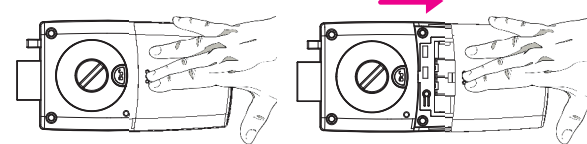


Specification(Back Ass'y)



For the Emergency use : if Open/Close button is not working, then just turn to open by finger

To Open the Battery Cover

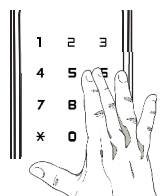


Press slightly battery cover and push to the direction of the arrow to open.

To Open the Door From Outside (Secret Code)

The product set to double security mode from originally purchased. Please refer "how to set double security mode" if you want to change normal mode.

1. To touch [Numeric Keypad]



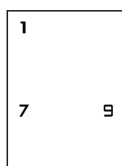
Touch the [Numeric Keypad]

2. To enter the secret code

Double security mode



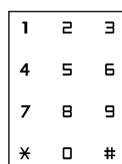
Press [*] button after enter the secret code being light on all the numeric keypad



The light comes on any 3 numeric button, then just press them regardless in order

Success : "Biriri"
Fail : "Biribiri"

Normal mode



Success : "Biriri"
Fail : "Biribiri"

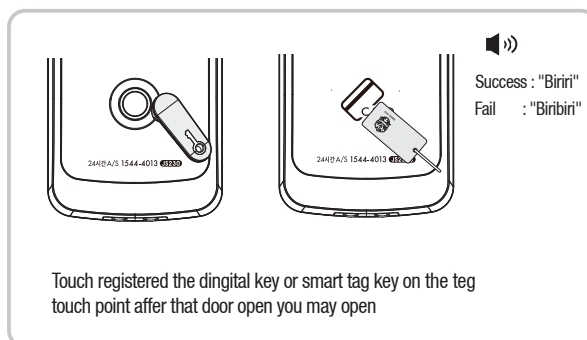
Press [*] button after enter the secret code being light on all the numeric keypad



- The secret code should enter after numeric lamp turns on, and if numeric lamp off during entering code, then please touch [Touch Keypad] and enter secret code again.
- After wrong codes are entered 3 times in a the keypad will become inactive for half a minute with a alarm "Biriri Biriri Biriri".

To Open the Door From Outside (Smart Tag)

Touch registered the digital key or the smart tag at the touch plate or tag touch point where on the front ass'y



Touch registered the digital key or smart tag key on the tag touch point after that door open you may open



- If the smart tag have problem with automatic recognition on the touch plate, then please touch again after Touch Keypad

To Open/Close the Door From Inside

Open the door by Electronic



"Biririk"

Press [Open/Close] button to open being deadbolt locked

Close the door by Electronic



"Birirink"

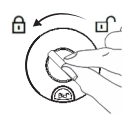
Press [Open/Close] button to lock the door in manual mode after closed the door

Open the door by Mechanical



Turn manual knob to open being deadbolt locked

Close the door by Mechanical

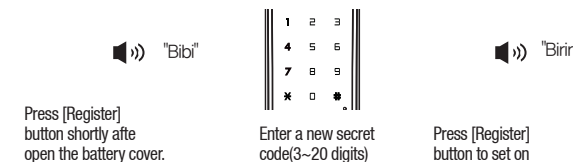


Turn manual knob to close after the door closed

Register Secret Code

The secret code can register between 3 to 20 digits and 1 secret code can use

1. Press [Register] Button
2. Enter a New Secret Code
3. Finish to Register



Press [Register] button shortly after open the battery cover.

Enter a new secret code(3~20 digits)

Press [Register] button to set on

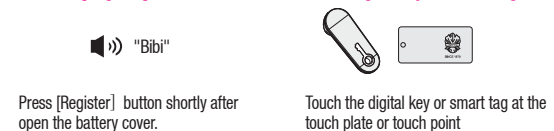
CAUTION

- please use secret code over 6 digits to prevent exposure secret code (Can be used the numeric 0 ~ 9 only).
- Do not exposed secret code to any 3rd person. For this, you should change secret code regularly.
- Automatically delete existing secret code after registering a new secret code
- You should check what a new secret code is register properly or not before close the door.

To Register Digital Key / Smart Tag

It will be automaticall deleted all existing digital keys or smart tags if register new one, therefore you should register in once time up to 50pcs each of them

1. Press [Register] Button
2. Touch Digital Key or Smart Tag



Press [Register] button shortly after open the battery cover.

Touch the digital key or smart tag at the touch plate or touch point

3. Finish to Register

Press [Register] button to set on




- It can be registered several smart tags, you should touch continuously smart tag within 7second after starting to register first digital smart tag, and it will set up automatically after 7 seconds.
- To confirm the register properly or not with the door open.

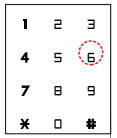
To Set/Release Double Security

This function is any of the three numbers to authenticate after enter registered secret code for exposure secret code to the other person

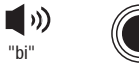
To set




"bibi"



Press "6" button



"bi"




"bi"

Press [Register] button after open the battery cover

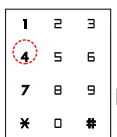
Press [Register] button to set up double security system

[4] button : Realse
[6] button : Ste up

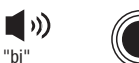
To release




"bibi"



Press [4] button



"bi"



"bi"

Press [Register] button after open the battery cover


Press [Register] button to release double security system

[4] button : Realse
[6] button : Ste up

The factory is not set up this function, please use after set up

To Set Auto/Maual Locking

The door is locked automatically or manually when the door closed



Maual Auto



The [Manual/Auto] switch position should be at [Manuall] or [Auto]

- Auto Locking : Automatically locking the door within 3 seconds after the door closed
- Manual Locking : Press [Open/Close] button after closed the door in manual mode

To Set/Release Volume

It can be control the beep volume when the door lock or unlock

7




0 1 2

- Control the volume switch after open the battery cover
- [0] = Mute(warning sound is keeping)
- [1] = Mids, [2] = High


To Release Double Security from Outside

In case you accidentally double locking set on, it can be released double locking mode from outside.


1. Touch[Numeric Pad]



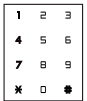
2. Enter Secret Code



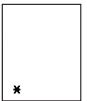
3. Press [#]



4. Enter secret code again



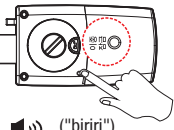
5. Press [*]



To Set/Release Double Locking

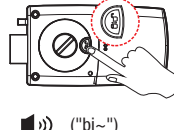
Double locking function is the door can not open from outside.

Double Locking Set



"biriri"

Release Double Locking



"bi~"

Press [Doublelock] button 3 seconds while the door is closing

Turn [Manual Knob] to open or press [open/close] button

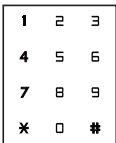
※ The factory mode is original set(Release)

8

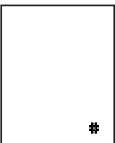
Mute Mode Function

It is designed to be totally silent during operation so as not to disturb the neighbor

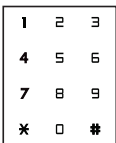
1. Touch [Numeric Pad]




2. Press [#]



3. Enter Secret Code



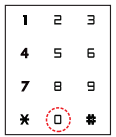
4. Press [*]



External Forced Locking Set/Release

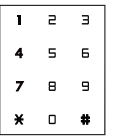
It makes strengthen security in case of long-term outing. It will be alarming if operate the device indoor side.

External Forced Locking Set



Press [0] after touched numeric pad in the locking state.

External Forced Locking Release



It will release automatically if using registered digital key or smart tag and secret code from outside

Warning/Emergency Sound Release

Remove out battery after opening the battery cover or touched smart tag or enter secret code with press [*]

9

To Replace Battery


When replace the beep melody comes on

It will notice to replace the battery when those batteries getting low voltage.

How to replace the battery

After the first beep is sounded, please replace all the batteries to new batteries within 7 days.

- It will stop the system, if not change the batteries after the beep sounded



CAUTION

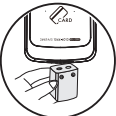
- The battery life span may differ according to manufacturer, date of manufacture, using environment (AA, Alkaline 1.5V 4pcs, Lifespan: 10 ~ 12 months if 10 times to use per day)
- Please check the batteries every 6 months to see if the batteries are leaking; in this case, the product will be damaged
- It can not change secret code, digital key, smart card after battery replacement beep is sounded until replace new battery.

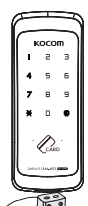
To Use Emergency Power(Battery)

When it is time to replace the battery, and continue without replacing the battery, the battery is discharged and the door lock not functioning normally.

How to use emergency power

Purchasing square battery(6F22 / 9V),
- Using alkaline battery only





While contacting the external emergency power terminal with a 9V(6F22) square battery, enter the secret code or contact smart card


10

Human Body Detection Function Set/Release

* The door can be opened/closed by only human hands due to capacitive touch type

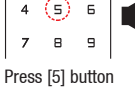
To Set

1. Press [Register] button




Press [Register] button after open battery cover

2. Press [5]



Press [5] button


3. Press [Register] button



Press [Register] button to end

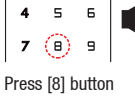
To Release

1. Press [Register] button




Press [Register] button after open battery cover

2. Press [8]



Press [8] button

3. Press [Register] button



Press [Register] button to end

Intrusion/Breakage Alarm Function

Notice in danger state by alarm for 3 minutes due to remove out the lock device by forced or breakage by abnormal way in door locked.

High Temperature Warning System

- If this system detect high temperatures, then it will activate an alarm, and release door locking function to evacuate peoples quickly(This function is basic system, therefore there is no setting or releasing the function). It will activate at 60 °C, it can vary depending on the installation environment.

It will open the door within 5 seconds and alarm for 5 minutes when it detect the high temperature(It will normal operation when the temperature down normally).

Product Specifications

Division	Specification	Remarks
Front Ass'y	68(W) X 173(H) X 24(D) mm	Power : DC6V Operating Temperature : -20 ~ 60 °C
Back Ass'y	90(W) X 157(H) X 36(D) mm	Sensor Activate : at 60 °C
Strike	AL Alloy Diecasting	Distance of Sensor : 2cm
Smart Tag	4pcs	Up to 50pcs Register
Battery	1.5V AA LR6 Alkaline 4pcs	
		Battery life span is for 10 months based on 10 times to use a day.

※ The battery validity can vary depending on battery manufacturer, production date, using environment and frequency.

11

Consumer's Erro and Carelessness Details

Description	Fees	
	Within warranty	Over warranty
General Compensation	Within a month after purchase	Replacement
	Within a year after purchase	Free Repair
	Same defect repeats 4 times	Free Repair
	Can not repair by Manufacturer	Replacement
Consumer's mistake and on purpose	No failure product	Repair with fee
	Consumer's error and carelessness	
	Wrong installation and other	

About Product Warranty

- ◎ Our warranty validity is a year from product purchasing date.
- ◎ We will charge you even warranty period if in case of repair with charge(Service Call Charge + Royalties + Components Cost).
- ◎ When you apply for a service, you should present the product warranty, installation information listed.
- ◎ If you don't have product warranty, you can replace purchase receipt, card slips, cash receipt(Simplified receipt disapproval)
- ◎ If it can not prove the date of purchasing, then it will be recognized by date of manufacture + Expiration date(6 months)

UNICOR HIGHTECH CO., LTD
62 EunCheong Street, Namdong-Gu, Incheon, Korea (zip : 405-817)
<http://www.unicor.co.kr>

12