
FWA-3300 User manual

**Rackmount Internet Security Platform with 4 GbE Front LAN Ports / 2 PCI
Expansion Slots/ LCD Display**

Advantech Internet Security Platform

Copyright Notice

This document is copyrighted, 2007. All rights are reserved. The original manufacturer reserves the right to make improvements to the products described in this manual at any time without notice. No part of this manual may be reproduced, copied, translated or transmitted in any form or by any means without the prior written permission of the original manufacturer. Information provided in this manual is intended to be accurate and reliable. However, the original manufacturer assumes no responsibility for its use, nor for any infringements upon the rights of third parties which may result from its use.

CE Notification

The FWA-3330, developed by Advantech Co., Ltd., has passed the CE test for environment specifications when shielded cables are used for external wiring. We recommend the use of shielded cables.

Product warranty

Advantech warrants to you, the original purchaser, that each of its products will be free from defects in materials and workmanship for two year from the date of purchase.

This warranty does not apply to any products which have been repaired or altered by persons other than repair personnel authorized by Advantech, or which have been subject to misuse, abuse, accident or improper installation. Advantech assumes no liability under the terms of this warranty as a consequence of such events.

Because of Advantech's high quality-control standards and rigorous testing, most of our customers never need to use our repair service. If an Advantech product is defective, it will be repaired or replaced at no charge during the warranty period. For out-of-warranty repairs, you will be billed according to the cost of replacement materials, service time and freight. Please consult your dealer for more details. If you think you have a defective product, follow these steps:

1. Collect all the information about the problem encountered. For example, CPU speed, Advantech products used, other hardware and software used, etc. Note anything abnormal and list any on-screen messages you get when the problem occurs.
2. Call your dealer and describe the problem. Please have your manual, product, and any helpful information readily available.
3. If your product is diagnosed as defective, obtain an RMA (return merchandise authorization) number from your dealer. This allows us to process your return more quickly.
4. Carefully pack the defective product, a fully-completed Repair and Replacement Order Card and a photocopy proof of purchase date (such as your sales receipt) in a shippable container. A product returned without proof of the purchase date is not eligible for warranty service.
5. Write the RMA number visibly on the outside of the package and ship it prepaid to your dealer.

Packing List

Before installation, ensure that the following materials have been received:

- One FWA-33000 Internet Security Platform
- One box of accessories
- One warranty certificate

If any of these items are missing or damaged, contact your distributor or sales representative immediately.

Technical Support and Sales Assistance

If you have any technical questions about the FWA-3700 or any other Advantech products, please visit our support website at:

<http://www.advantech.com.tw/support>
<http://www.advantech.com>.

For more information about Advantech's products and sales information, please visit:

Contents

1. General Information.....	1
1.1 Introduction.....	1
1.2 Features.....	1
1.3 Specifications.....	1
1.4 Dimensions.....	3
1.5 Model List.....	3
2. System Setup.....	4
2.1 Removing the cover.....	4
2.2 Installing CPU Heat-sink	5
2.3 Installing Memory Module.....	6
2.4 Installing Hard Drive.....	7
2.5 Installing Compact Flash.....	7
Appendix A.....	8
A.1 NAME-3300 Mother Board.....	8

Figures

Figure 2-1: Front view of FWA-3300.....	4
Figure 2-2: Removing the cover.....	4
Figure 2-3: Top view of FWA-3300.....	5
Figure 2-4: Installing CPU Heat-sink.....	5
Figure 2-5: Installing Memory Module steps.....	6
Figure 2-6: Installing Hard Disk Drive steps.....	7
Figure 2-7: Installing Compact Flash steps.....	7

1

General Information

1.1 Introduction

The FWA-3300 is a cost effective and power efficient Internet Security Platform designed for entry-level small/medium business (SMB) security applications. The platform is driven by the power saving VIA C7™ CPU, combined with the VIA CX700 chipset, making it the ideal alternative for an economical entry level security solution. The VIA C7 processor has a built-in PadLock Security Engine, which is a fast and reliable hardware security accelerator without the added cost of an extra add-on card. With support from Marvell 8001 Ethernet controllers, the FWA-3300 provides four Gigabit Ethernet (GbE) LAN ports for robust connectivity.

The FWA-3300 supports optional IDE or SATA HDD, which effectively enhances the implementation of many Internet security applications such as IDS/IPS, anti-virus, and VPN gateways. Two onboard PCI expansion slots are available for add-on cards and added expandability. A CompactFlash slot is available for OS and Application updates, which can be easily accessed and replaced through an easily removable cover on the back. Plus, there is an optional LCD module on the front panel to display platform status, and a 9-pin RS-232 serial port for local system management, maintenance & diagnostics. The FWA-3300 is FCC, CE, UL, CCC and RoHS compliant.

For more information on the VIA PadLock Security Engine, please visit

<http://www.via.com.tw/en/initiatives/padlock/index.jsp>

1.2 Features

- Supports VIA C7® Processor
- DDR2 400/533 SODIMM, up to 1 GB
- Four 10/100/1000 Mbps GbE LAN ports
- Supports one fixed 3.5" IDE or SATA HDD
- Two 32-bit/33 MHz PCI expansion slot
- LCD display module
- VIA PadLock™ Security Engine for hardware crypto acceleration

1.3 Specifications

- **Processor System:**

- CPU: VIA C7 1.0GHz processor
- Max. Speed: 533/400 MHz FSB
- L2 Cache: 128B
- Chipset: VIA CX700
- BIOS: Award 4 Mb Flash

Memory: Support DDR2 533/400, Max. Capacity 1 GB, Socket 200-pin SOD DIMMx 1

Ethernet: 4 10/100/1000 Gigabit Ethernet, RJ-45 x 4

Drive Bay: 3.5" HDD x1

Management: Console RS-232 x1

Cooling: Fan (15 CFM) x2

Miscellaneous: Power Switch, 2 LED indicators for Power/HDD, CompactFlash Socket x1, LCD Display Module x1

- **Adapter Power Requirement:** Input: AT PS, AC 90 ~ 264 V @ 47 ~ 63 Hz, full range Output: 180W

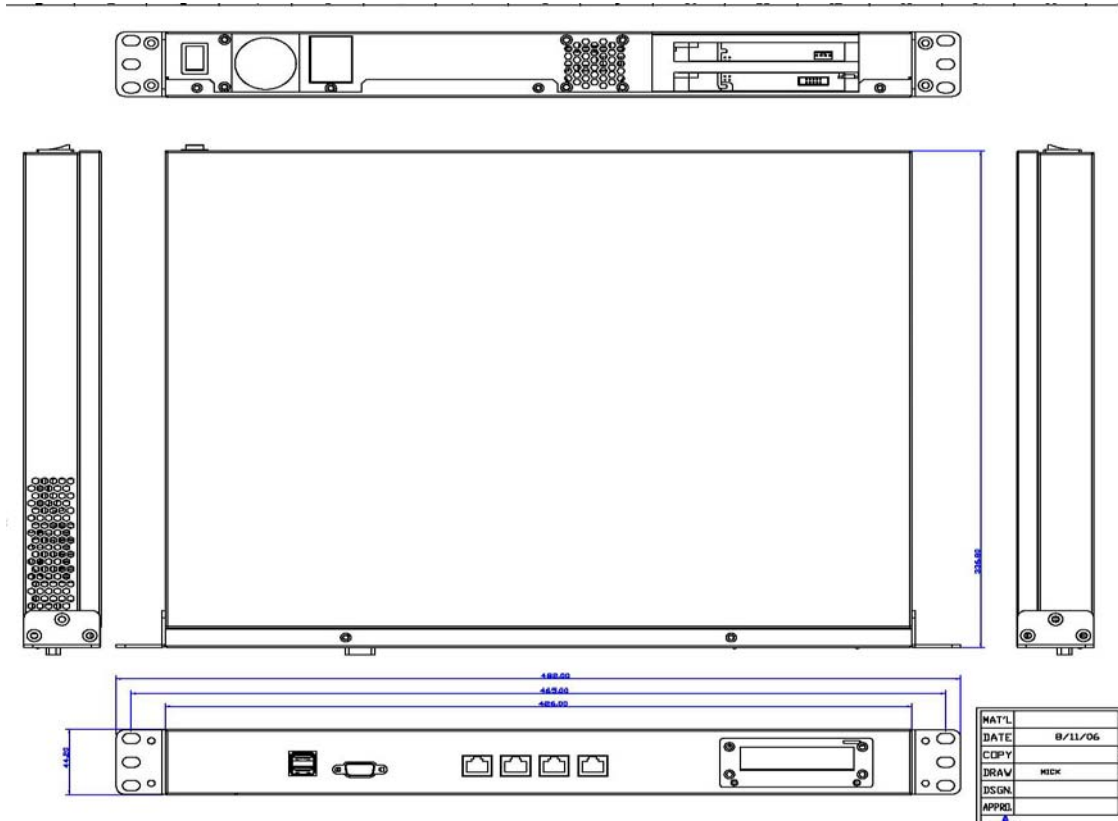
- **Operating Environment:** Operating: Temperature 0 ~ 40 °C (32 ~ 104 °F), Humidity 5 ~ 85 %

Non-Operating: Temperature -20 ~ 80 °C (-4 ~ 167 °F), Humidity 5 ~ 95 %

Dimensions (W x H x D): 1U: 426 x 44 x 337 mm (16.8" x 1.7" x 13.3")

Weight: 4.5 Kg (9.9 lb)

1.4 Dimensions



1.5 Model List

FWA-3300E: 1U rackmount Internet security platform, 2 32-bit/33 MHz PCI expansion slots (Optional for customization), LCD display module, Four 10/100 GbE Ethernet ports supporting

2

System Setup

Setting up your FW-3300 requires only a screwdriver and a small amount of time. Before you begin, you should also gather together all of the device you plan to install, as well as the CPU, RAM, HDD, and etc. The front panel of FWA-3300 includes a LCD display module, four Ethernet ports, a RS-232 console port, and two LEDs where one is power LED and another is HDD LED. On the rear panel, there is a power switch located on the top left hand corner.



Figure 2-1: Front view of FWA-3300

2.1 Removing the cover

There are screws which secure the cover to the chassis. They are along the sides, near the top. Remove them, and then slide the cover to the rear of the chassis.



Figure 2-2: Remove top cover



Figure 2-3: Inside of FWA-3300

2.2 Installing CPU Heat-sink

- 1 Apply the thermal tape to provide better heat conduction between your CPU and cooling fan. Position the heat-sink on top of the CPU. Use screw driver to fix the heat-sink sequence.
- 2 Make sure the CPU fan power connector is plugged to the motherboard fan power connector, than installing CPU is completed.

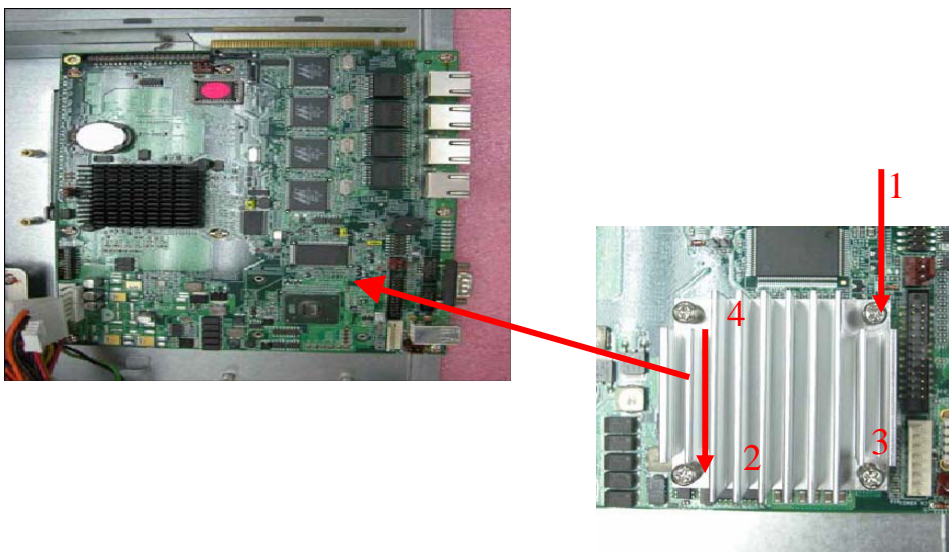


Figure 2-4: Install CPU Heat-sink

2.3 Installing Memory Module

- 1 Unlock a DIMM socket by. Align the notch of the DIMM memory module to match on the socket and insert the DIMM into the socket until the DIMM is properly seated.
- 2 Press the DIMM inward to lock the DIMM memory module. Installing memory module is completed.



Figure 2-5: Install RAM module

2.4 Installing Hard Disk Drive

- 1 Unscrew each side of the HDD supporting frame on the chassis and pull it out.
- 2 Put the HDD above the HDD supporting frame and position the screws accordingly.
- 3 Screw each side of the HDD supporting frame to fix on the chassis.
- 4 Connect the SATA cable included in the accessory box to the connector on the HDD. Connect power connector to the HDD. Installing Hard Disk Drive is completed.

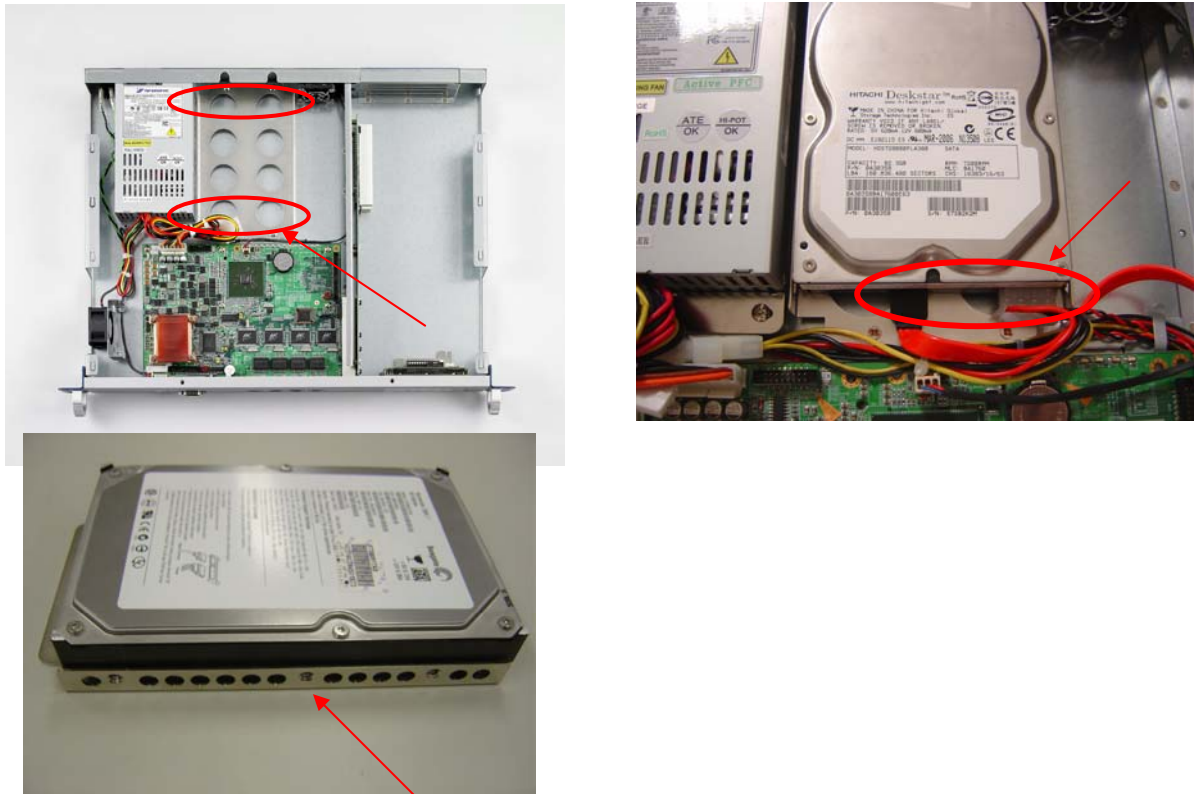


Figure 2-6: Install HDD

2.5 Installing Compact Flash

1. Position a CompactFlash disk accordingly in the CompactFlash disk socket and push it inward. Installing CompactFlash disk is completed.

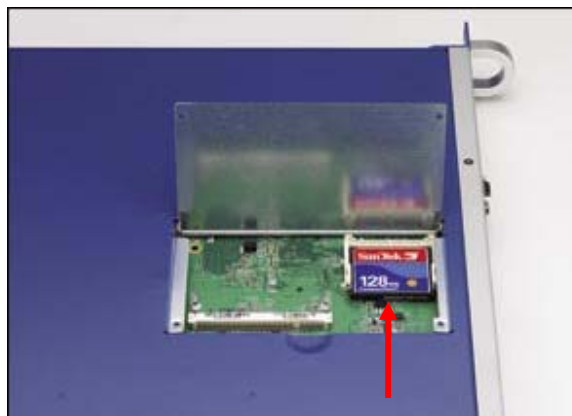


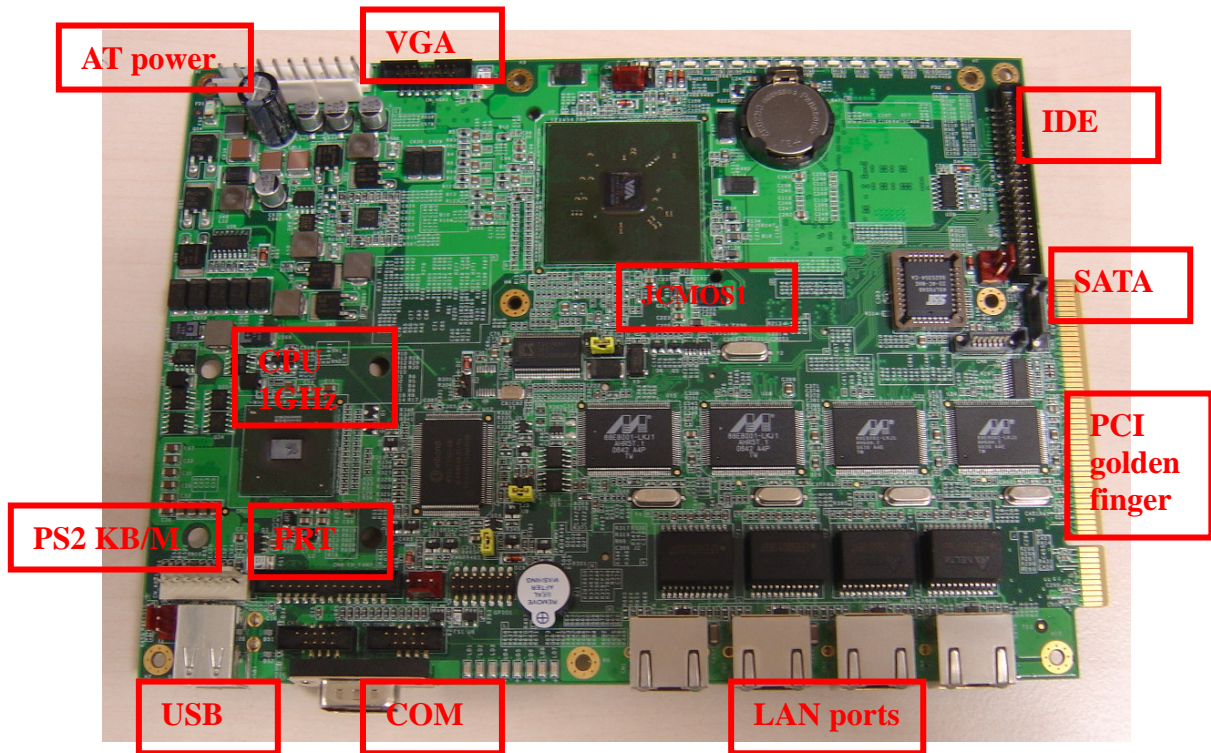
Figure 2-7: Install CF card

A

Pin Assignments

APPENDIX

A.1 NAME-3300 Mother Board



Jumper setting of FWA-3300:

No.	Jumper Name	Description	Default Setting
1	J1	System Reset	Off
2	J3	ATX Power On	On
3	J4	HDD Active LED (Only for FWA-3300)	On for FWA-3300
4	JCMOS1	CMOS Clear Jumper	Connect Pin 1 and Pin 2 (Connect Pin 2 and Pin 3 to clear CMOS)
5	JP_HWM1	Internal Buzzer	On

No.	Connector	Description
6	CN_KBMS1	PS2 KB/Mouse connector
7	CN_COM1	D-SUB COM port connector
8	CN1 ~ CN4	Gigabit Ethernet connector
9	CN7	USB PIN header (3,4)
10	USB1	USB connector (1,2)
11	CN_COM2	COM2 PIN header
12	CN8	Printer port PIN header
13	GPIO1	General purpose Input/Output PIN
14	CN5 ~ CN6	SATA connector
15	CN_IDE1	44PIN IDE PIN header for 2.5" HDD
16	CN_VGA1	VGA 15P PIN header
17	CN9	DC IN AT power supply connector

Jumper & connector location notice of item no.:

