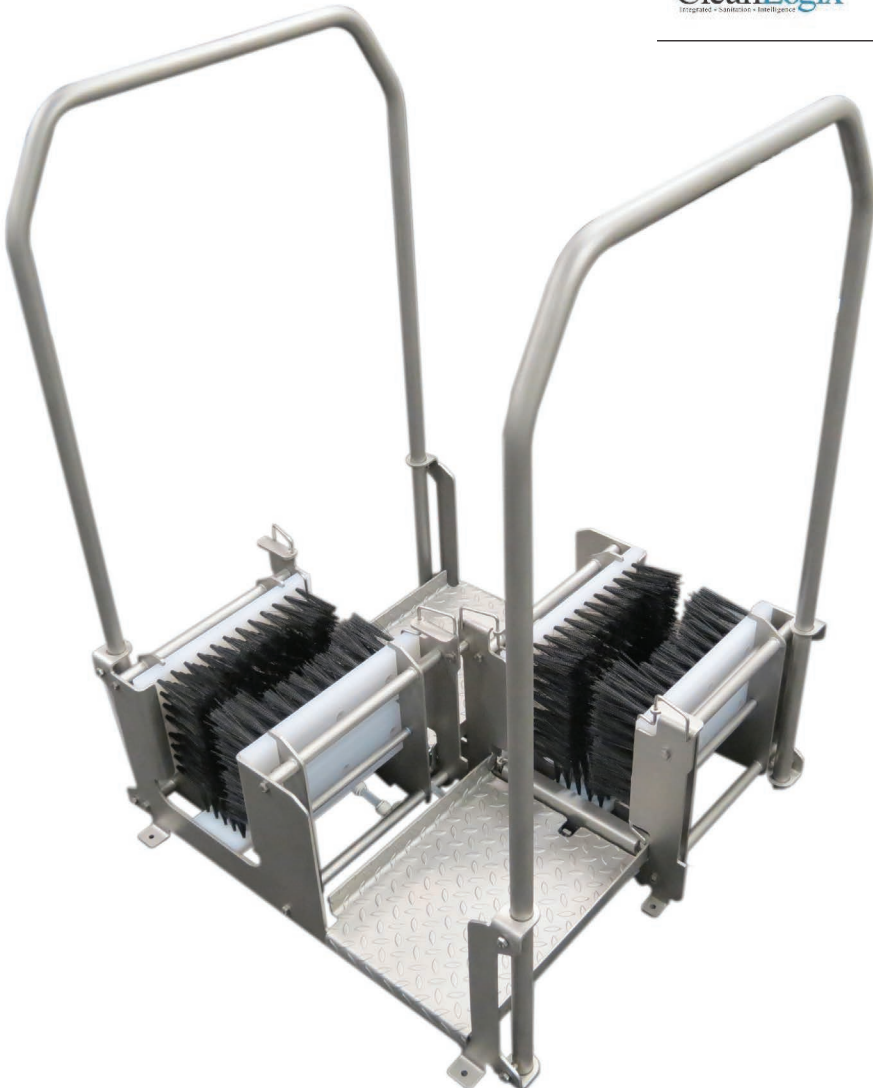

USER MANUAL


**MODEL NUMBER:
BLX-200W**

Dual Manual Boot Scrubber Wet




English (Original Instructions)



READ ALL INSTRUCTIONS BEFORE OPERATING EQUIPMENT

 **CAUTION**

Avoid Personal Injury

-  1. Avoid contact of cleaning agent with skin and eyes. If contact occurs, see MSDS sheet for further first aid measures.
-  2. Follow safety instructions of chemical manufacturer (MSDS).
-  3. Always follow plant and OSHA guidelines about the use of hygiene equipment.
- 4. All personnel using this unit must be familiar with the information contained in this manual. Follow all installation and maintenance instructions.
- 5. *Always wear appropriate footwear. Secure or remove loose items on footwear.*
- 6. Ensure solid footing and use both hands when operating the unit.

Specifications:

Frame.....304 solid stainless steel construction
Length.....30”
Width.....30”
Height.....42”

Requirements:

Electrical:

None

Water Connection:

Cold Potable Water
35 PSI Minimum Pressure
50 PSI Maximum Pressure
100° Maximum Temperature

Attention: A backflow preventer must be installed in the water line to this unit. Check local codes to ensure proper installation.



READ ALL INSTRUCTIONS BEFORE OPERATING EQUIPMENT

General Overview

Installation Instructions:

1. Set unit in desired location.
2. Aspects to consider when deciding on placement:
 - Room for entering and exiting.
 - Traffic flow for unit operation.
 - Emergency exit paths or egress in case of emergency.
 - Head room for personnel while using the unit.
 - Connections for water.
3. Once the unit is in the desired location, use a level to make sure the unit is stable and level in all directions. Make sure the location is a flat surface. (Figure 1).

4. Securely fasten unit to the floor with concrete anchors and bolts through the 4 mounting brackets (Circled in red in Figure 1 & 2).



WARNING - IF UNIT IS NOT SECURELY MOUNTED TO FLOOR, UNIT CAN TIP OVER AND CAUSE PERSONAL INJURY.

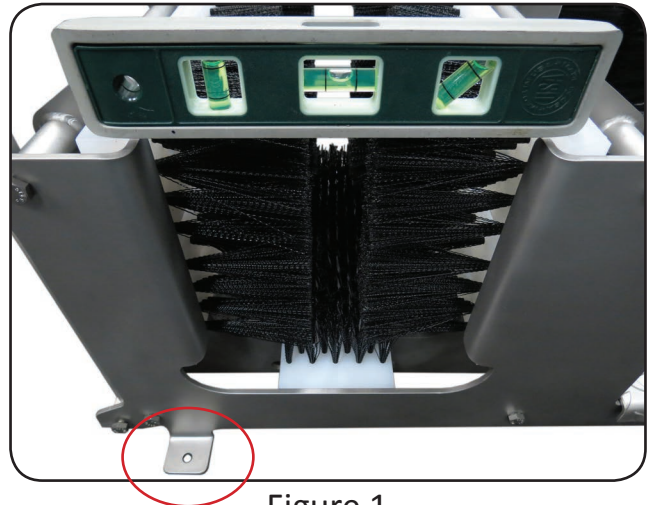


Figure 1

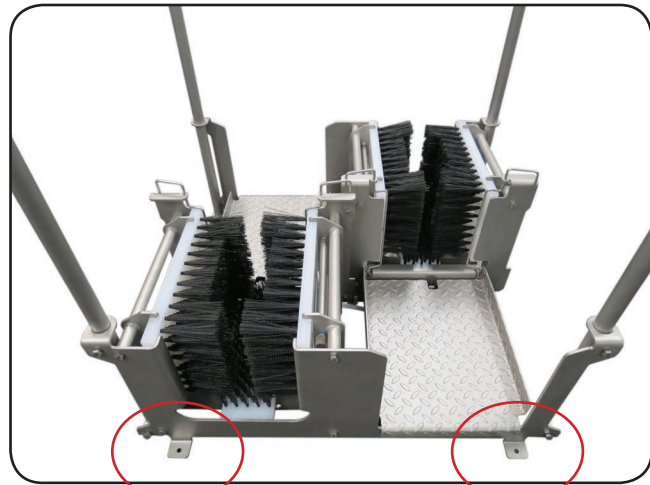


Figure 2

READ ALL INSTRUCTIONS BEFORE OPERATING EQUIPMENT

General Overview

Plumbing Setup:

Attention: A backflow preventer must be installed in the water line to this unit. Check local codes to ensure proper installation.

- Use 3/8" OD polyethylene tubing to connect water or chemical supply to solution inlet fitting on boot scrubber (Figure 3).
- See Figure 4 for recommended installation.

Note: Unit needs minimum 35 PSI and a 2 GPM connection to operate.

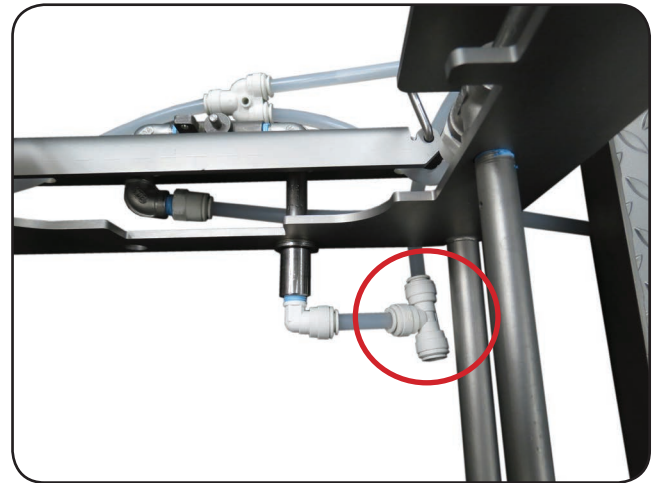


Figure 3

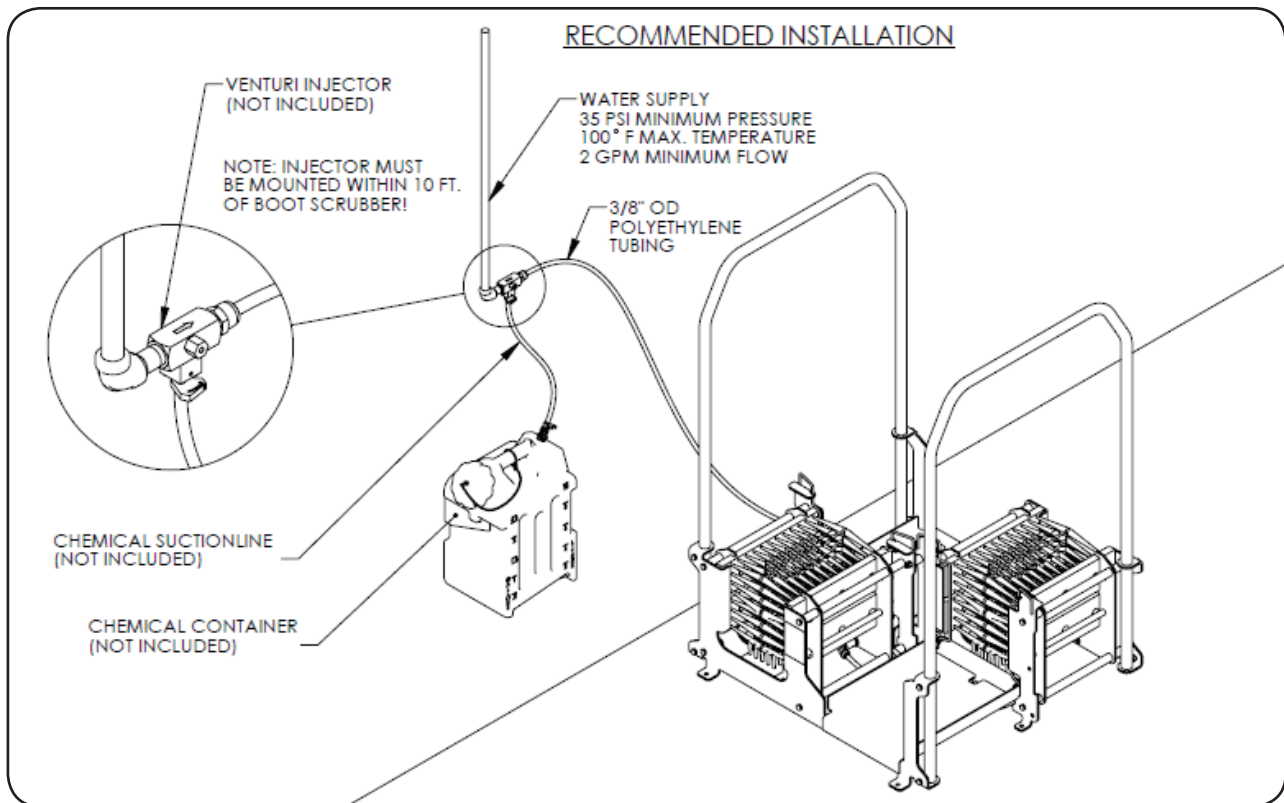


Figure 4

READ ALL INSTRUCTIONS BEFORE OPERATING EQUIPMENT

General Overview

Handrail Installation Instructions:

1. Place handrail through the mounting brackets on each side of the unit (Figure 5).
2. Use two 1/2" wrenches to tighten the bolt through the locknut, securing the handrail in place (Figure 6 & Figure 7).
3. Repeat this process for all 4 bolts on each side of the unit (8 bolts total) (Figure 8).

Note: Do not over-tighten bolts or deformation of sheet metal may occur!

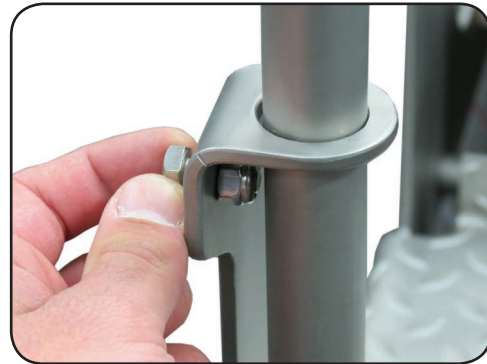


Figure 5



Figure 6

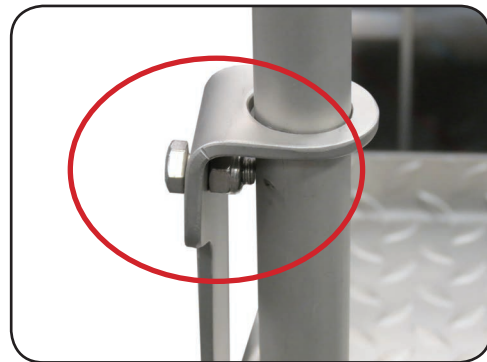


Figure 7

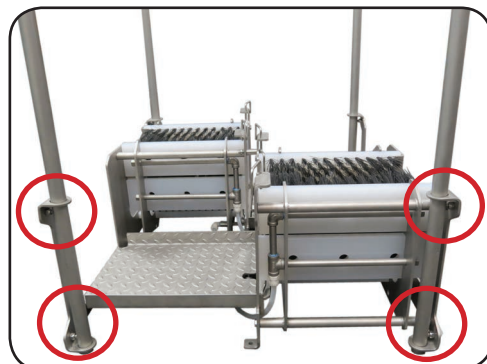


Figure 8

READ ALL INSTRUCTIONS BEFORE OPERATING EQUIPMENT

General Overview

Footplate Installation Instructions:

1. Align Footplate on the front of the unit.
2. Make sure the notches on the plate line up with the tabs on the unit.
3. Figure 9 shows proper footplate placement.

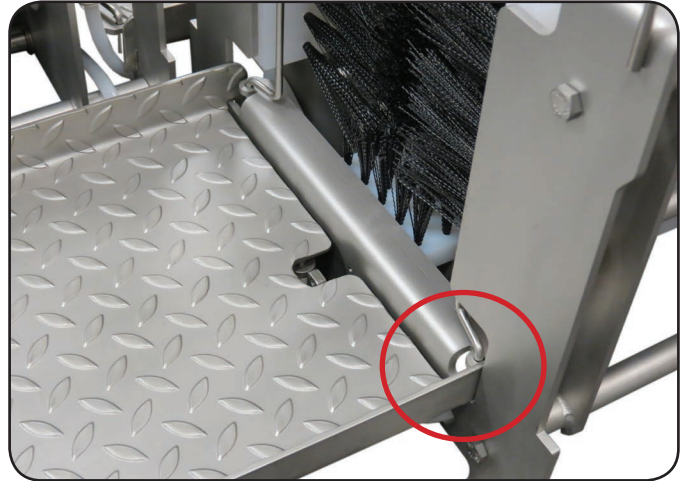


Figure 9

Brush Removal Instructions:

1. The brushes are held in place by the brush clip at the front of the unit (Figure 10).
2. To remove the brushes, pull up on the clip and rotate towards the rear of the unit (Figure 11).
3. Once unlocked, the brushes can be removed for cleaning.

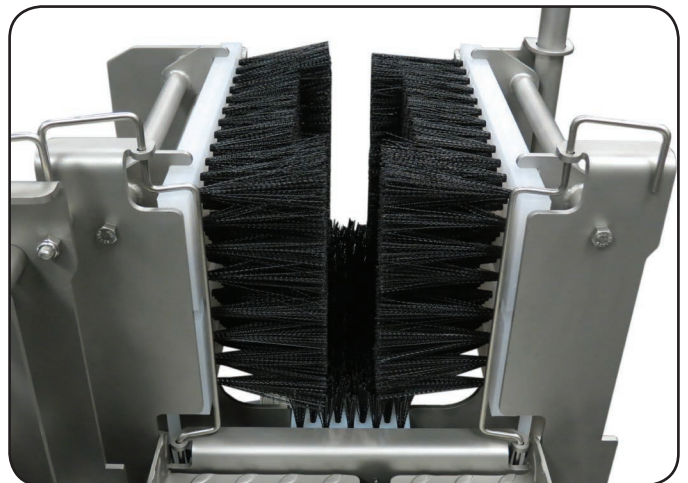


Figure 10

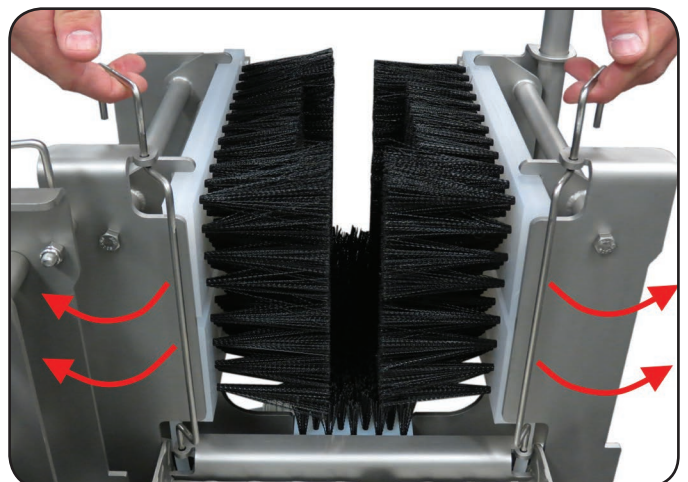


Figure 11

READ ALL INSTRUCTIONS BEFORE OPERATING EQUIPMENT

Operation Instructions:

Start Up:


After completed installation of the unit:


1. Ensure the brushes and footplate are properly secured in their correct positions.
2. Turn ON water supply to unit.
3. Before placing footwear into the unit, test that the unit is working properly by stepping on the footplate and making sure water/sanitizer sprays from spray bars.
4. The unit is now ready for use.


Operation:


Before beginning unit operation, ensure solid footing and use both hands when operating the unit.

1. To begin unit operation, step onto the footplate. The plate will push down on the valve, which will turn on the spray bars for as long as it is held down.
2. Place one boot in the unit at a time. Slide boot back and forth multiple times so every part of the boot contacts with the brushes.
3. Once the first boot is clean, repeat process with the second boot.
4. If boots are extremely dirty, it may be necessary to perform multiple cleanings.

 **WARNING:** Always wear appropriate footwear. Secure or remove loose items on footwear to prevent entanglement.

 **WARNING:** All personnel using this unit must be familiar with the information contained in the user manual. Follow all installation and maintenance instructions.

 **WARNING:** Use only for intended use as described in this manual.

 **WARNING:** Always follow safety precautions and obey warning labels. Failure to do so could result in injury or death.

Shut Down for Cleaning/Washdown:

1. Shut off water line to unit and depressurize line.
2. The unit is ready to be cleaned.

Cleaning/Washdown:

1. Remove the footplate from the unit.
2. Unlock the brushes from the frame and lift them out.
3. The brushes and footplate can be washed individually in a COP tank or wash machine, and the frame can be washed by conventional means.

BLX General Maintenance Instructions

The below maintenance procedures are recommended for normal use. Units which see a high amount of daily use should be inspected more frequently as necessary.

Weekly:

- Check unit for proper valve function.
- Inspect brushes for damage or wear. Check for missing or deformed bristles.
- Inspect plumbing for damage.
- Ensure solid mounting to floor.

Monthly:

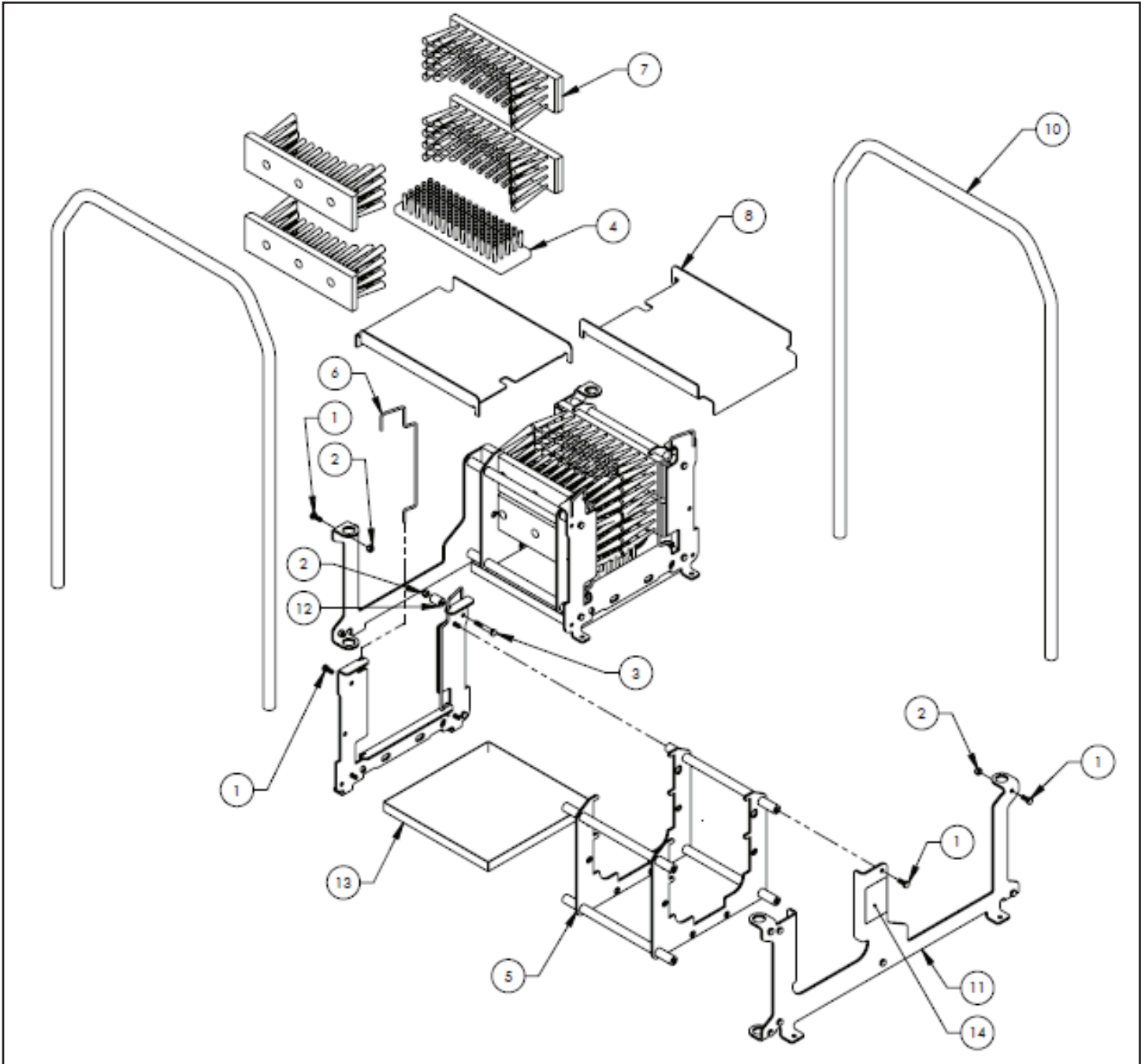
- Check all fasteners to ensure they are tight.
- Ensure warning labels and decals are present and in good condition.
- Inspect valve for damage.

Quarterly:

- Inspect structure for cracked welds or bent components.

READ ALL INSTRUCTIONS BEFORE OPERATING EQUIPMENT

Model: BLX-200W | Exploded View



READ ALL INSTRUCTIONS BEFORE OPERATING EQUIPMENT

Model: BLX-200W | Parts Callout

NO.	PART NUMBER	DESCRIPTION	FILE NAME	BLX-200D/QTY.
1	F1036	BOLT HHC 5/16-18 X 3/4 SS	Hex Finished Bolt_AI	24
2	F1052	NUT NYLOCK 5/16-18 SS	NUT NYLOCK .31-18	10
3	F1152	BOLT HHC 5/16-18 X 2 SS	Hex Finished Bolt_AI	2
4	M1262	BRUSH FIXED 10-1/2 X 3	BRUSH FIXED 10.5 X 3 REV101	2
5	M1388	BRUSH BOX WLDMNT	BRUSH BOX WLDMNT REV102	2
6	M1392	BRUSH CLIP	BRUSH CLIP REV100	4
7	M1393	FIXED SIDE BRUSH	FIXED SIDE BRUSH REV103	8
8	M1395	FOOT PLATE BLX-200	FOOT PLATE BLX-200 REV102	2
9	M1396	FRONT PLATE BLX MANUAL	FRONT PLATE BLX MANUAL REV102	2
10	M1397	HANDRAIL BLX-200	HANDRAIL BLX-200 REV100	2
11	M1398	REAR PLATE BLX-200	REAR PLATE BLX-200 REV101	2
12	M1407	SPACER BLX-200	SPACER BLX-200	2
13	M1416	DEBRIS TRAY	DEBRIS TRAY REV100	2
14	P1248	LABEL SLIP HAZARD	LABEL CAUTION SLIP HAZARD	2

READ ALL INSTRUCTIONS BEFORE OPERATING EQUIPMENT

Model: BLX-200W | Dimensions Diagram

