

# User manual

## HSS-AZ

### Plaster model trimmer

with replaceable foil grinding wheel or part-diamond embedded **Dia-Quick** wheel, with or without solenoid valve.



Figure 1: HSS-AZ

WASSERMANN  
DENTAL-MASCHINEN



WASSERMANN DENTAL-MASCHINEN GMBH

***Dear customer,***

Thank you for choosing a product from the Wassermann range. Wassermann dental equipment incorporates the highest standards of quality and the latest technology. In order to enjoy maximum performance and years of trouble-free operation from the equipment, please read this user manual carefully before you start work, and operate the unit according to the recommended guidelines.

Please ensure that all persons operating the equipment have read and understood this user manual.

**Keep this user manual on hand for ready reference.**

**Company address:**

Wassermann Dental-Maschinen GmbH

Rudorffweg 15-17

D-21031 Hamburg

Germany

Tel.: +49 (0)40/ 730 926 - 0 Fax.: +49 (0)40/ 730 37 24

e-mail: [info@wassermann-dental.com](mailto:info@wassermann-dental.com)

URL: [http// www.wassermann-dental.com](http://www.wassermann-dental.com)

**Contents**

<b>CONTENTS</b> .....	<b>2</b>
<b>1 FOR YOUR SAFETY</b> .....	<b>4</b>
1.1 CORRECT USE OF THIS PRODUCT .....	4
1.2 SAFETY SYMBOLS USED IN THIS MANUAL .....	4
1.3 SAFETY GUIDELINES .....	5
1.4 POTENTIAL DANGERS .....	6
1.5 YOUR USER MANUAL.....	6
1.6 RESPONSIBILITY FOR OPERATION AND DAMAGE .....	6
1.7 AUTHORIZED USERS .....	7
<b>2 CARE AND MAINTENANCE</b> .....	<b>7</b>
2.1 MAINTENANCE .....	7
2.2 CARE .....	8
<b>3 USE/APPLICATION</b> .....	<b>8</b>
<b>4 BEFORE YOU START</b> .....	<b>8</b>
4.1 UNPACKING / TRANSPORT .....	8
4.2 CONTENTS/ACCESSORIES .....	9
4.3 SET-UP AND STORAGE .....	9
<b>5 OPERATION</b> .....	<b>10</b>
5.1 TECHNICAL DATA.....	10
5.2 WATER REGULATION .....	11
<b>6 INSTALLATION</b> .....	<b>11</b>
6.1 LOCATION.....	11
6.2 RINSING WATER HOSE .....	12
6.3 DRAIN HOSE .....	12
<b>7 ASSEMBLY</b> .....	<b>13</b>
7.1 INSTALLING THE ANGLED MOUNT .....	13
<b>8 SUPPORTS</b> .....	<b>14</b>
<b>9 MAINTENANCE</b> .....	<b>14</b>

---

---

9.1	SERVICING.....	14
9.2	TROUBLESHOOTING.....	14
9.3	FOIL GRINDING WHEELS.....	15
9.4	GRINDING WHEELS.....	15
9.5	ACCESSORIES.....	16
<b>10</b>	<b>WARRANTY .....</b>	<b>16</b>
<b>11</b>	<b>EC CONFORMITY CERTIFICATE .....</b>	<b>17</b>

---

## 1 For your safety

### 1.1 Correct use of this product



The HSS-AZ plaster trimmer is used in dental laboratories and is designed **exclusively** for grinding (trimming) plaster models.

To prevent damage to the trimmer and/or to the blade, it must be used **only** with plaster.

### 1.2 Safety symbols used in this manual



#### **Warning!**

This is a warning of risk situations and dangers.

Failure to observe this warning could be life-threatening. These warnings must be observed.



#### **Information!**

This symbol draws your attention to specific features, which should be noted.

---

### 1.3 Safety guidelines

Servicing and repairs should be carried out only by authorised specialists.



Before you carry out any cleaning or maintenance work, disconnect the power plug and prevent the motor from restarting accidentally. You should also disconnect the water line.



Always wear eye protection when working on grinding wheels.



Electric motors have dangerous electrically conducting and rotating parts when in use. They can cause damage to health and property if operated incorrectly, used for other than their intended purpose or inadequately serviced.



Only qualified specialists should carry out work on the motor.

Condensers must be allowed to discharge completely before you open the unit.



When working on the unit, wear close-fitting garments and roll sleeves inwards only. Do not wear gloves.

If you have long hair, wear some form of protection such as a hair net.

When working with the HSS-AZ, do not wear rings, chains, bracelets or similar jewellery.



Be sure to shut off the tap at night and over the weekend.

---

#### **1.4 Potential dangers**



**The trimmer's rotating parts and the grinding blade are dangerous.**

#### **1.5 Your user manual**

Configuring and operating this equipment requires precise knowledge and observance of the instructions in this user manual. The equipment is designed only for its intended application.

#### **1.6 Responsibility for operation and damage**

The responsibility for operating the unit lies exclusively with the owner or user if the said unit is incorrectly serviced, maintained or altered by persons not employed by an accredited dealer or if the unit is used in a manner contrary to its specified purpose.

The unit must be maintained and operated in accordance with this user manual. Wassermann Dental-Maschinen GmbH is not responsible for damage arising from the **non-observance** of these instructions.

Guarantee and responsibility provisions contained in the sales and supply conditions of Wassermann Dental-Maschinen GmbH are not extended by these instructions.



**Product responsibility lapses if the equipment is altered by third parties or if non-original parts are installed. Use only original Wassermann replacement parts. If damage occurs after a "foreign wheel" has been installed, responsibility lies with the person who installed said replacement wheel.**

**If diamond-grinding wheels are used, they will exhibit *extreme wear* if you grind embedding materials and metals. Wassermann assumes no responsibility in such cases.**

---

## 1.7 Authorized users

The owner of the equipment must ensure that any users have been provided with the user manual and that they have read and understood its contents before operating the equipment.



**Ensure that this user manual is accessible at all times and has been read and understood.**

## 2 Care and maintenance

### 2.1 Maintenance



**Before you carry out any cleaning or maintenance work, disconnect the power plug and prevent the motor from restarting accidentally.**

**Be sure to disconnect the water supply when carrying out this work.**

**Do not open the unit until the grinding wheel has come to a complete stop.**

The HSS-AZ plaster model trimmer does not require any maintenance. However, if you open the wheel chamber for cleaning or to change the wheel, be sure to clean the sealing surfaces and coat them with a new application of water-insoluble grease (*Top 2000*).

For safety reasons, you should regularly check that the clamps on the water hose are tight.

---



## 2.2 Care



We recommend removing any caustic traces of plaster from the outside of the unit from time to time using a damp cloth. The HSS-AZ does not require any other care.

## 3 Use/Application

The HSS-AZ trimmer is used for grinding (trimming) plaster models.

**\*\*\* Use this equipment only for its intended purpose! \*\*\***

## 4 Before you start

### 4.1 Unpacking / Transport

- Open the cartons, remove the packing materials, and carefully lift out the instrument and accessories. Check that the accessories are correct.
- When transporting the unit, use appropriate packing materials to avoid accidental damage.



Locate the user manual and read it carefully.



When unpacking, it is important to identify any accidental transport damage. If necessary, draw up an immediate status report.

---

## 4.2 Contents/Accessories

- 168997 HSS-AZ trimmer with grinding wheel
- 168037 Angled mount
- 168011 1-metre water feed hose
- 168014 1-metre drain hose

## 4.3 Set-up and storage

- When you set up the unit, make sure that the grinding wheel is accessible and that the unit is close to the plaster cutter.
- You will need the high-pressure hose with the woven insert and a diameter of 1/2 inch (13 mm) when installing the *rinsing water hose*. You use the plastic hose with a diameter of 1 inch (25 mm) for the *drain hose*.
- When it comes to functional safety, the location of the trimmer is very important, even if it is only to be stored there for a short period. The location should be dry, well ventilated and free of vibration. An even temperature and a wooden base are desirable. **The trimmer must not be set up or stored out of doors.**



**Warning!!! The trimmer must be at room temperature before you start it.**

---

## 5 Operation

### 5.1 Technical data

Motor power	1000 Watt
Voltage	230 Volt / 50 Hz
Power consumption	4,6A
Duty cycle	S3 – 40 %
Speed	3000 rpm
Weight	18.1 kg



### Dimensions

Width	295 mm
Height	315 mm
Depth	370 mm
Table	120 mm



**We reserve the right to make technical changes.**

The noise emission measured in a 1-metre circle around the unit and 1.6 metres high at an average 50% idling, 30% average load and 20% full load was 69 dB(A). This was determined in accordance with DIN 45635 Part 1.



**After you switch the trimmer on, wait a few seconds for the motor to come up to speed. Only then can you use its full power.**

**Never push on the models so hard that the motor labours. This could overload it and cause possible damage.**

---

## 5.2 Water regulation

The water supply is regulated at the tap. The flow of water is sufficient if the grinding wheel is close to its natural colour when grinding.

When grinding, use **light pressure only** and do not move the model to the right or left.



**You should, of course, always work with fully set plaster models, as wet plaster can cause blockages, especially in drain hoses.**

## 6 Installation

### 6.1 Location

Because the trimmer operates exclusively with water, we recommend you install it close to a tap. The best place is right next to a washbasin or, using the *wall mount*, directly above the basin.

## 6.2 *Rinsing water hose*

Locate the *rinsing water hose* (thinner hose with woven insert) between the tap and the hose connector on the trimmer. This connector is at the rear, under the motor. Use the clamps already on the hose to connect it, tightening them securely.

There should be a stopcock between the tap and the feed hose so the hose is not under continuous pressure when the trimmer is **not** being used.



**Tighten the hose clamps again about 2 days after installation.**

**The tap must be turned off at night and over the weekend.**

## 6.3 *Drain hose*

The drain hose must be laid out such that water can never back up in the trimmer. This would cause the water to spray out through the grinding wheel opening. Always arrange the hose in a smooth bend (not kinked) and with a permanent drop of at least 1 cm per metre.



**The end of the drain hose must be above the water level of a plaster catcher.**

**The hose end must not be immersed in the water.**

---

In its standard configuration, the drain-hose connection is *angled* off to the right. However, it can also be aligned *vertically* to the right, and this is recommended in difficult drain situations.

In that case, use a sealing cap instead of the drain connection.

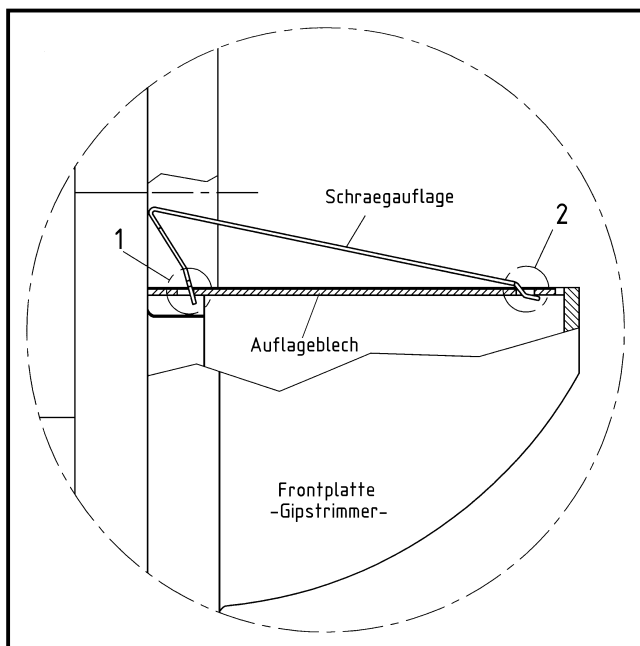
## 7 Assembly

### 7.1 Installing the angled mount

The angled mount is inserted as required in the HSS-AZ support plate. Please follow the guidelines below.



**When working with the angled mount, make sure that it has been installed correctly. It should be installed as shown in the diagram below.**



**Make sure that items 1 and 2 are inserted correctly in the support plate.**

## 8 Supports

The HSS-AZ plaster trimmer does not need any other support than the one described in 7.1 *Installing the angled mount*.

## 9 Maintenance

### 9.1 Servicing

For details of maintenance, see 2.1 *Maintenance*. Otherwise, the trimmer does not require any special maintenance.

### 9.2 Troubleshooting

Fault	Likely cause	Likely solution
Water spray at wheel opening	Water supply set too high	Reduce water pressure at tap or ball valve (see 5.2 <i>Water regulation</i> )
	Drain hose has been lengthened with a <i>thinner</i> hose	Make sure that the diameter of the drain hose is 1 inch (25.4 mm)
	Drain hose is kinked	Make sure the hose is laid out without <i>kinks</i>
	Hose end is under the surface of the water in the plaster catcher	Make sure that the hose end is above the surface of the water
	The fall of the hose is insufficient	Ensure that the fall is at least 1 cm per metre
	The radius of the hose is too small	Ensure that the hose is laid out as straight as possible
	There is a tube bend in the hose (causing blow-back)	The bend must be increased to at least $D = 40$ mm

### **9.3 Foil grinding wheels**

These wheels can be turned around and remounted after one side has been used up, thus allowing you to continue working. This increases wheel life considerably.

### **9.4 Replacement grinding wheels**

Replacement wheels are always supplied with a tube of grease for sealing the wheel chamber.



**We strongly advise against installing a replacement wheel on top of an already installed wheel, regardless of its origin and type.**



**Warning!**

**If diamond wheels are used, you will experience extreme wheel wear when grinding embedding materials and metals. We assume no responsibility for this.**



**When using a replacement wheel, follow the instructions provided for changing wheels.**

---



## 9.5 Accessories

<b>Accessories</b>	
Item number	Description
162 013	Replacement HSS-AZ/ 88 grinding wheels (4 wheels)
162 063	Replacement Dia-Quick grinding wheel (part diamond embedded)
168 056	HSS-88/ AZ wall mount
164 026	Extractor for changing wheels, compl.
629 002	Lubricating grease for trimmer

## 10 Warranty

The warranty period for our equipment is 12 months. If faults occur within the warranty period, contact your dental depot or get in touch directly with our Service department. Your plaster model trimmer should only be operated in perfect condition. If faults occur which could harm operators or third parties, the unit should not be used until it has been fixed.

This warranty does not cover damage caused by improper use, external mechanical causes, transport damage or interference with the unit by unauthorized persons.

**11 EC conformity certificate**

**in accordance with 73/23/EWG (low-voltage guidelines) modified by 93/68/EWG and 89/336/EWG (EMV guidelines) and 89/392/EWG (Machinery guidelines), with modifications**

<p>Manufacturer:    W A S S E R M A N N Dental-Maschinen GmbH Rudorffweg 15 - 17 D-21031 Hamburg</p>	<p>Product description:  Plaster     model trimmer for dental applications</p>
------------------------------------------------------------------------------------------------------------------	----------------------------------------------------------------------------------------

<p>Model:</p>	<p>HSS-AZ plaster trimmer without solenoid valve     (162 998) HSS-AZ plaster trimmer with solenoid valve         (162 999)</p>
---------------	-------------------------------------------------------------------------------------------------------------------------------------

Applicable standards:     EN 61010-1:1993 + A2:1995  
                                      EN 50081-1 + EN 50082-1  
                                      DIN 45635 Part 1

Hiermit wird bestätigt, dass die oben bezeichnete Maschine den genannten EG-Richtlinien entspricht. Diese Erklärung wird ungültig, falls die Maschine ohne unsere Zustimmung verändert wird.

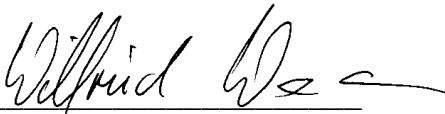
This is to confirm that the above mentioned machine complies with the described EC rules. This declaration becomes invalid if the machine is modified without our approval.

Cette machine est conforme aux normes en vigueur de la Communauté Européenne. Cet avis est nul et non avenant si cette machine est modifiée sans notre accord.

Esta máquina, anteriormente mencionada, cumple con los limites requeridos por el reglamento EC. Ahora bien, esta declaración quedará invalidada en caso de realizar modificaciones al aparato sin nuestra aprobación.

Hiermee wordt bevestigd dat bovengenoemde machine voldoet aan de voorgeschreven EU normen. Deze verklaring verliest geldigheid als er zonder onze uitdrukkelijke toestemming wijzigen aan de machine worden aangebracht.

Place, date: Hamburg, 10 April 2003          Company stamp:

Signed:   
                                      Wilfried Wassermann  
                                      (Managing Director)



**WASSERMANN**  
DENTAL-MASCHINEN GMBH  
Rudorffweg 15 - 17 · 21031 Hamburg





WASSERMANN Dental-Maschinen GmbH  
Rudorffweg 15 – 17, D-21031 Hamburg

Tel.: + 49 (0)40 / 730 926 – 0

Fax: +49 (0)40 / 730 37 24

e-mail: [info@wassermann-dental.com](mailto:info@wassermann-dental.com)

Internet: <http://www.wassermann-dental.com>