



# 2006

## TRAINING GUIDE

FinePix Digital Cameras. Any Shot. Every Shot. Perfect Shot.



**FUJIFILM**

# Welcome to the FUJIFILM FinePix Training Guide for Fall/Winter 2006



This guide is designed to equip you with basic feature, benefit and technology information that makes Fujifilm FinePix cameras among the finest consumer cameras in the industry.

Use this information to strengthen your knowledge of Fujifilm FinePix products and enhance your ability to service your customers!

Thanks for your continued support of Fujifilm FinePix digital cameras.



# FUJIFILM HERITAGE

Fujifilm has a long-standing heritage of being an industry innovator with a history of photographic and imaging excellence. Focused on product development and research, Fujifilm introduced the world to the first compact digital camera, with ISO 3200, and has continued to lead the way as an inventor of many of the tools consumers and professionals use. Fujifilm continues to leverage its technological and photographic expertise to take digital imaging and cameras to new heights.

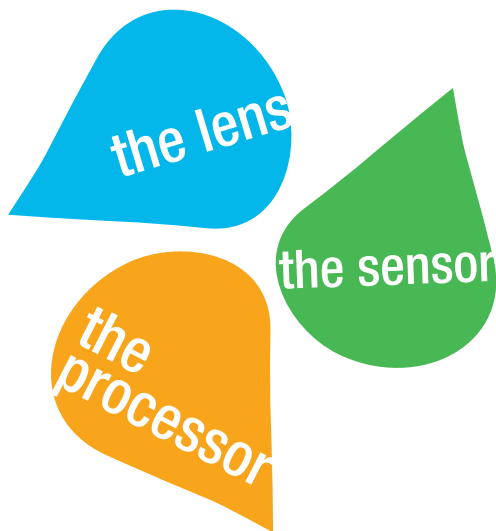


powered by REAL PHOTO TECHNOLOGY

**FUJIFILM**

# REAL PHOTO TECHNOLOGY

Fujifilm Real Photo Technology seamlessly incorporates the latest technological improvements affecting all THREE main camera components - the lens, the sensor and the processor. Real Photo Technology works so effectively because it makes the overall picture a better image. The photographic result – capture life's most precious moments that are so true-to-life, looking at the picture is just like reliving the moment all over again.



# REALPHOTO TECHNOLOGY.

ANY SHOT. EVERY SHOT. PERFECT SHOT.

# SUPER CCD-HR SENSOR

Super CCD image sensor combines higher sensitivity with the advanced noise suppression capabilities of the RP (Real Photo) Processor to fully exploit the image quality and resolutions of FinePix high MP cameras.

Even photos taken in typically noisy situations such as twilight and under other low light conditions retain the subtle tonality and beauty you saw with your own eyes.



Standard CCD



Fujifilm FinePix Super CCD

Fujifilm FinePix digital cameras use a proprietary CCD system that utilizes larger, octagonal-shaped, light-gathering diodes called Picture Elements, or pixels, that are laid out in a saw-tooth pattern. Super CCDs can capture more light information than ordinary CCDs; the extra information is used by the camera's image processor to improve color accuracy and ISO speed.

# RP (REAL PHOTO) PROCESSOR

RP (Real Photo) Processor is an advanced signal processing developed by Fujifilm. Two cycles of sophisticated noise reduction processing yields high quality images, even at high ISO settings, and Contour Correction processing stands for clearer contrast with natural resolution. In addition, ultra fast processing means Fujifilm FinePix cameras have “no-wait” operation, with super fast shutter time and short frame-to-frame intervals. Also, energy efficient processing means longer battery life and more shots per charge.



ANY SHOT. EVERY SHOT. PERFECT SHOT.

# FUJINON LENS

Faster Auto Focus (AF) and Auto Exposure (AE) means the camera is ready to capture every moment, all the time. And, with the increased sensitivity of the NEW Super CCD-HR Sensor, the lens can even adjust focus and exposure for low-light conditions and make Face Detection possible by adjusting focal points.





## i-FLASH

Beyond Smart Flash, there's i-Flash, the Intelligent Flash that thinks for you. It's all about capturing the absolute best looking photos, even in the most challenging situations. i-Flash delivers gorgeous pictures with true-to-life color, natural looking skin tones and super-sharp details across the entire image.

i-Flash is a fully integrated component of Fujifilm Real Photo Technology and takes advantage of super-fast auto exposure, dim-light auto focus and increased sensitivity for a wide range of operation in various lighting and scene conditions. Because i-Flash has more power ranges with more focal points than other flashes, it can more accurately identify the subject's distance from the background and the location of the subject from left-to-right within the frame. Working in combination with the NEW RP (Real Photo) Processor to set the highest possible ISO setting (up to ISO 3200), i-Flash can easily focus on subjects in poor lighting conditions to intelligently adjust the flash intensity. Digital camera users get natural looking skin tones and background details, even when the subjects aren't in the center of the frame.

### LIGHT DONE RIGHT

i-Flash gives you superb pictures with great lighting and exquisite details, exposing the subject without over-powering the background.

ANY SHOT. EVERY SHOT. PERFECT SHOT.





# PICTURE STABILIZATION

Picture Stabilization cures 3  
common causes of blurry pictures

**1. Subject movement**

Riding a bike, jumping, dancing or racing.  
FinePix cameras focus quickly on things that move fast.

**2. Unsteady arm holding the camera**

Even the strongest person can't hold the camera still.  
With FinePix, slight camera shake won't affect focus.

**3. Low light environments**

Moonlit walks and candle light dinners.  
FinePix cameras can see more, with less available light.  
And that means the camera can focus in very low light conditions.

Picture Stabilization automates professional photographic techniques to reduce or eliminate these causes of blurry pictures. By utilizing Real Photo Technology and the advanced capability of Fujifilm FinePix digital cameras, a greater degree of control is achieved which results in sharper, clearer images, even when taken in adverse conditions.

## SAY GOODBYE TO BLURRY PICTURES


Picture Stabilization captures sharp,  
clear pictures by reducing the blur  
caused by camera shake and subject  
action, even in low light conditions.



## NATURAL LIGHT MODE

Natural Light Mode is almost a dream come true. Well, that's mostly because it can easily capture the dreamy ambiance, mood and feel created by the ambient lighting characteristics found in certain scenes. It could be the glimmer of a sunset, a candlelight dinner or even the flicker of a campfire.

Natural Light Mode is powered by Fujifilm Real Photo Technology and works exceptionally well because it disables the camera's flash system and activates the highest ISO setting in the NEW RP (Real Photo) Processor. With ISO 3200 sensitivity on select FinePix digital camera models, the camera can see more detail just by using the available natural light. So, instead of capturing photos that look overexposed by flash, overwhelming the natural ambiance, you get pictures that are just as warm and true-to-color as the scene itself. And because Natural Light Mode is integrated with the NEW 6th Generation Super CCD-HR Sensor, its super-high signal-to-noise ratio maintains a clean image, free of grain.



**TRUE COLORS SHINING THROUGH**  
Natural Light Mode preserves the true-to-life color of the scene and captures fine details in both the subject and the background without ever using a flash.

ANY SHOT. EVERY SHOT. PERFECT SHOT.



## DUAL SHOT MODE

Dual Shot Mode will take two pictures with one press of the shutter button; one with flash, to capture a bright, vivid image, and the other without flash, to capture the natural ambience of the scene's environment using Fujifilm Natural Light Mode.

Dual Shot Mode gives you more flexibility to assure a great picture.



**TO FLASH OR NOT TO FLASH**  
Dual Shot allows you to get both  
shots, with flash and without,  
almost simultaneously!



## FACE DETECTION

Face Detection makes sure faces in your picture are in focus and look bright and natural with smooth skin tones, especially when people are not in the center of the picture.

High ISO sensitivity helps to increase background details and requires less flash power to be effective across an even wider range of conditions. The LSI Hardware driven system processes at super fast 5/100th of a second and identifies up to 10 human faces using facial recognition technology. Auto focus accurately detects people, even if they're not in the center of the picture, determining the location of people based on left-to-right position and distance from background.



### IDENTIFYING UP TO 10 FACES IN YOUR SHOT

Fujifilm Face Detection technology assures proper focus and contrast for both subject and background.

ANY SHOT. EVERY SHOT. PERFECT SHOT.



## HIGH SENSITIVITY

To increase sensitivity in digital cameras, the image sensor output can be increased. Of course, amplifying image sensor output will also result in an increase of image “noise”, or specs in the image that are not part of the original shot you wanted to capture.

Just as in film cameras, greater sensitivity also means higher noise and some loss of image quality as a result.

It is within these basic fundamental principles of high sensitivity that Fujifilm FinePix cameras outperform other consumer digital cameras. Using the advanced design of the RP (Real Photo) Processor and the high quality and performance of the Super CCD-HR Sensor, Fujifilm FinePix cameras have the ability to reach some of the highest sensitivity performance in the industry, and with remarkable quality!



## IT'S IN THE DETAILS

Thanks to Fujifilm Real Photo Technology, Fujifilm FinePix cameras utilize some of the highest sensitivity in the industry, allowing for great performance in low light, with less noise.

# SHOOTING MODES

Depending on which Fujifilm FinePix camera you select, there are a variety of Shooting Modes that make “point-and-shoot” take on new meaning.

Even though most compact digital cameras are designed to be used as a simple point-and-shoot camera, there are some shooting conditions that require a little extra attention to lighting, focus, or shutter and aperture settings to make sure the shot looks great.

Fujifilm FinePix cameras offer several great preset shooting modes that make photography easy in a number of different challenging environments.



**PORTRAIT:** Specifically designed for head shots or close-up subject shots. Used for getting beautiful skin tones and soft overall tone.



**LANDSCAPE:** Used for scenery in daylight. Provides crisp, clear shots of distant subjects such as mountains or large buildings.



**SPORT:** This mode gives priority for faster shutter speeds to capture fast moving objects such as race cars, runners, bicyclists, etc.



**NIGHT SCENE:** Priority is given to slow shutter speeds in order to capture accurate nighttime composition.



**BEACH AND SNOW:** Use this mode to prevent darkening or overexposed images when shooting in conditions of bright sunlight such as at the beach or when skiing.



**FIREWORKS:** Optimizes the camera settings for capturing brilliant fireworks displays.



**PARTY:** Used for shooting at weddings or an indoor party. This mode retains natural lighting characteristics of the shooting environment.



**MUSEUM:** Use this mode when taking pictures in places such as museums, where the use of flash and operational sounds (shutter sounds) may be prohibited. Flash mode is forcibly set to suppressed flash, and operational sound and shutter sound are disabled.



**SUNSET:** This mode makes colors more vivid for sunset time of day.



**TEXT:** For shooting documents and white board. It is highly effective for maintaining sharp clear text reproduction.



**FLOWER CLOSE-UP:** Use this mode to take a clear, sharp, close-up shot of any subject matter that is very small or contains highly detailed composition.



**UNDERWATER:** Use this mode for shooting with a waterproof case. It is effective for taking more vivid shots of ocean blue.

# LCD TECHNOLOGY

Bright sunlight viewing is enhanced on select 2006 models thanks to Fujifilm patented CV Film Technology (CV for Clear View) which is found on millions of plasma and LCD monitors around the world. CVF diffuses light to reduce glare with a contoured surface layer, while a low reflection coating causes a phase shift of different color wavelengths. The benefit...you see the LCD image even in direct sunlight.

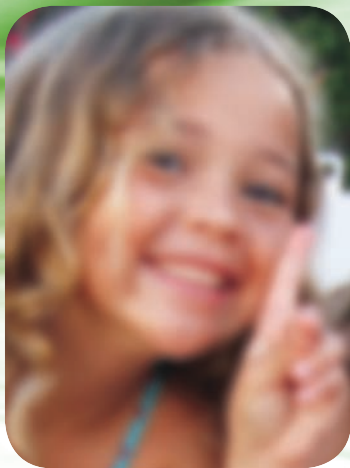






# CONVENTIONAL DIGITAL vs. **FINEPIX DIGITAL** COMPARISON

SIDE BY SIDE



powered by REAL PHOTO TECHNOLOGY

**FUJIFILM**



## i-FLASH



Conventional Digital

### LIGHT DONE RIGHT

i-Flash gives you superb pictures with great lighting and exquisite details, exposing the subject without overpowering the background.

You always get the right amount of light on the actual person or subject with backgrounds that are visible and detailed, even if lighting conditions are not the best to begin with.

### FinePix Digital



ANY SHOT. EVERY SHOT. PERFECT SHOT.



## PICTURE STABILIZATION



Conventional Digital

### SAY GOODBYE TO BLURRY PICTURES

Picture Stabilization captures sharp, clear pictures by reducing the blur caused by camera shake and subject action, even in low light conditions.

Capture virtually blur-less photos, especially in action shots and low lighting conditions.

FinePix Digital



powered by REAL PHOTO TECHNOLOGY

**FUJIFILM**

N

## NATURAL LIGHT MODE

TRUE COLORS  
SHINING THROUGH

Natural Light Mode preserves the true-to-life color of the scene and captures fine details in both the subject and the background without ever using a flash.

Because there's no flash affecting your shot, the increased ISO sensitivity in the camera allows you to capture the natural light and color mood around you, including exquisite background details. It's also great when you want to take great looking pictures in areas where you can't use flash.

Conventional Digital

FinePix Digital



ANY SHOT. EVERY SHOT. PERFECT SHOT.



## DUAL SHOT MODE

### TO FLASH OR NOT TO FLASH

Dual Shot Mode gives you more flexibility to assure a great picture, no matter what lighting situation.

Dual Shot Mode will take two pictures with one press of the shutter button; one with flash, to capture a bright, vivid image, and the other without flash, to capture the natural ambience of the scene's environment using Fujifilm Natural Light Mode.



Without Flash

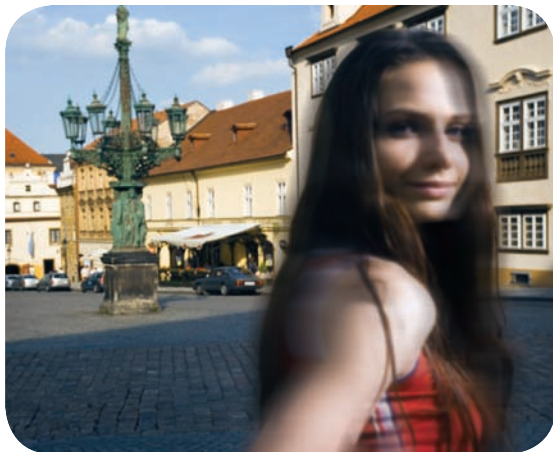
With Flash





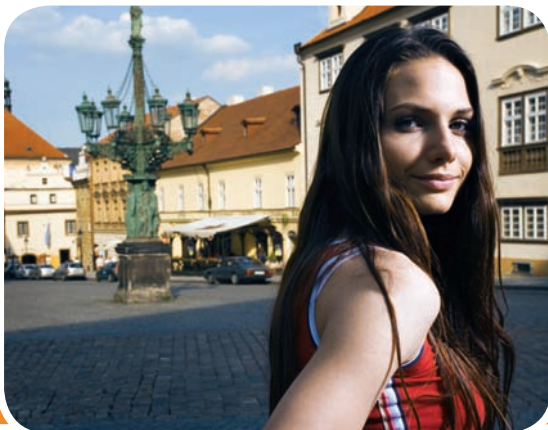


## FACE DETECTION



Conventional Digital

FinePix Digital



### IDENTIFYING UP TO 10 FACES IN YOUR SHOT

Fujifilm Face Detection technology lets the camera do the work for you, assuring sharp, clear, well lit images of family and friends with professional quality results.

The faces in your photos always come out looking clear. Even skin tones, no washed out features and backgrounds that look great.

ANY SHOT. EVERY SHOT. PERFECT SHOT.



## HIGH SENSITIVITY

### IT'S IN THE DETAILS

Thanks to Fujifilm Real Photo Technology, Fujifilm FinePix cameras utilize some of the highest sensitivity in the industry, allowing for great performance in low light, with less noise.

By improving camera performance in low light, High Sensitivity gives your camera the capability to shoot in more situations, and with professional results.



Conventional Digital

### FinePix Digital







# DIGITAL CAMERAS

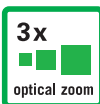


DIGITAL CAMERAS

powered by REAL PHOTO TECHNOLOGY

**FUJIFILM**

# A400



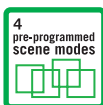
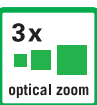
- 4.1MP Super CCD-HR Sensor
- 3x Optical Zoom
- 3.6x Digital Zoom for 10.8x Total Zoom Range
- Up to ISO 400 at Full Resolution
- Built-in Flash with Red-eye Reduction
- 1.8" LCD with Anti-glare Viewing in Bright Sun
- Optical Viewfinder
- 3 Second Startup / 2 Second Frame-to-Frame
- Four Selectable Scene Positions (Portrait, Landscape, Sport and Night Scene)
- Movie Mode
- Video Output
- Multi-Language LCD Monitor
- PictBridge Compatible
- 12MB Internal Memory
- Operates on 2x AA Alkaline (supplied) or NiMH Rechargeable Batteries



ANY SHOT. EVERY SHOT. PERFECT SHOT.

A-SERIES

# A500

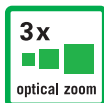


- 5.1MP Super CCD-HR Sensor
- 3x Optical Zoom
- 5.2x Digital Zoom for 15.6x Total Zoom Range
- Up to ISO 400 at Full Resolution
- Built-in Flash with Red-eye Reduction
- 1.8" LCD with Anti-glare Viewing in Bright Sun
- Optical Viewfinder
- 3 Second Startup / 2 Second Frame-to-Frame
- Four Selectable Scene Positions (Portrait, Landscape, Sport and Night Scene)
- Movie Mode
- Video Output
- Multi-Language LCD Monitor
- PictBridge Compatible
- 12MB Internal Memory
- Operates on 2x AA Alkaline (supplied) or NiMH Rechargeable Batteries



A-SERIES

## A600

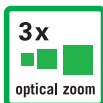


- 6.3MP Super CCD-HR Sensor
- Fujinon 3.0x Optical Zoom
- 6.3x Digital Zoom for 18.9x Total Zoom Range
- 2.4" LCD with Anti-glare Viewing in Bright Sun
- Up to ISO 400 at Full Resolution
- Built-in Flash with Red-eye Reduction
- Low Light Gain Up for Viewing Images on the LCD in Dimly Lit Conditions
- Four Selectable Scene Positions (Portrait, Landscape, Sport and Night Scene)
- Movie Mode with Mono Sound
- 12MB Internal Memory
- Improved Ergonomic Design with Non-slip Grip
- Multi-Language LCD Monitor
- PictBridge Compatible



ANY SHOT. EVERY SHOT. PERFECT SHOT.

# A700



- 7.3MP Super CCD-HR Sensor
- Fujinon 3.0x Optical Zoom
- 6.3x Digital Zoom for 18.9x Total Zoom Range
- 2.4" LCD with Anti-glare Viewing in Bright Sun
- Up to ISO 400 at Full Resolution
- Built-in Flash with Red-eye Reduction
- 12MB Internal Memory
- Four Selectable Scene Positions (Portrait, Landscape, Sport and Night Scene)
- Movie Mode with Mono Sound
- Operates on 2x AA Alkaline (supplied) or NiMH Rechargeable Batteries
- Multi-language LCD Monitor
- PictBridge Compatible

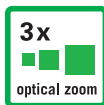
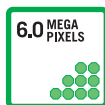


A-SERIES

powered by REAL PHOTO TECHNOLOGY

**FUJIFILM**

F470

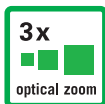


- 6.0MP
- 3x Optical Zoom
- 4.4x Digital Zoom for 13.2x Total Zoom Range
- Up to ISO 400 at Full Resolution
- Built-in Flash with Red-eye Reduction
- 2.5" LCD with Anti-glare Coating
- 60fps LCD Refresh Rate for Smooth Viewing
- Ultra-slim Camera Body (less than 1")
- Ten Selectable Scene Positions (Portrait, Landscape, Sport, Night, Beach & Snow, Sunset, Museum, Party, Flower Close-up, Text)
- Movie Mode with Sound
- Low Light Manual Gain Up for Easy LCD Viewing
- 16MB Internal Memory
- Rechargeable Li-ion Battery Included



ANY SHOT. EVERY SHOT. PERFECT SHOT.

# F20



- 6.3MP Super CCD-HR Sensor
- Real Photo Technology for Superior Image Quality
- Picture Stabilization with Easy One-touch Control Button
- Dual Shot Mode
- Fujinon 3x Optical Zoom Lens
- 6.2x Digital Zoom for 18.6x Total Zoom Range
- Up to ISO 1600 at Full Resolution (ISO 2000 in Picture Stabilization / Natural Light Modes)
- Built-in Flash with Red-eye Reduction
- 2.5" LCD with Anti-glare Viewing in Bright Sun
- Ten Selectable Scene Positions (Portrait, Landscape, Sport, Night, Beach & Snow, Sunset, Museum, Party, Flower Close-up, Text)
- Movie Mode with Sound
- Low Light Gain Up for Easy LCD Viewing
- Increased Operational Speed
- 13MB Internal Memory
- Rechargeable Li-ion Battery with up to 300 shots / charge

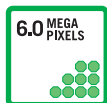


F-SERIES

powered by REAL PHOTO TECHNOLOGY

**FUJIFILM**

# F650



- 6.0MP
- Fujinon 5x Optical Zoom Lens
- 4.4x Digital Zoom for 22x Total Zoom Range
- Up to ISO 400 at Full Resolution
- Built-in Flash with Red-eye Reduction
- 3" LCD with Anti-glare Viewing in Bright Sun
- Slim Camera Body
- Ten Selectable Scene Positions (Portrait, Landscape, Sport, Night, Beach & Snow, Sunset, Museum, Party, Flower Close-up, Text)
- Movie Mode with Sound
- Low Light Manual Gain Up for Easy LCD Viewing
- Continuous Shooting Mode
- 32MB Internal Memory
- Rechargeable Li-ion Battery Included



ANY SHOT. EVERY SHOT. PERFECT SHOT.



# F30



- 6.3MP with Super CCD-HR Sensor
- Real Photo Technology for Superior Image Quality
- Fujinon 3.0x Optical Zoom
- 6.2x Digital Zoom for 18.6x Total Zoom Range
- Up to ISO 3200 at Full Resolution
- Built-in Flash with Red-eye Reduction and i-Flash Intelligent Flash System
- 2.5" Large LCD with 230K Pixels and Clear View Film for Anti-glare in Bright Sun
- Picture Stabilization for Blur-less Photos
- Natural Light Scene Mode for Natural Light and True-to-Life Color without Flash
- Eleven Selectable Scene Positions (Portrait, Landscape, Sport, Night, Beach & Snow, Sunset, Museum, Underwater, Party, Flower Close-up, Text)
- Movie Mode with Sound
- Li-ion Battery with up to 580 Shots / Charge
- Full Manual Control Capability
- Low Light Gain Up for Easy LCD Viewing
- Dual Shot Mode

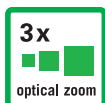


F30 SERIES

# Z3



Z-SERIES

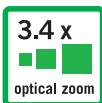


- 5.1MP Super CCD-HR Sensor
- Real Photo Technology for Superior Image Quality
- Picture Stabilization for Blur-less Photos
- New 3x Non-extending Refractive Optical Zoom Technology
- 5.7x Digital Zoom for 17.1x Total Zoom Range
- UP to ISO 1600 at Full Resolution
- Built-in Flash with Red-eye Reduction and i-Flash Intelligent Flash System
- Dual Shot Mode
- Large 2.5" LCD with Anti-glare Viewing in Bright Sun
- Scratch Resistant Reinforced Acrylic Protective LCD Shield
- Eleven Selectable Scene Positions (Portrait, Landscape, Sport, Night, Fireworks, Sunset, Beach & Snow, Museum, Party, Flower Close-up, Text)
- Movie Mode with Sound
- Low Light Gain Up for Easy LCD Viewing
- Strong All Metal Mono-Body Shell
- 10MB Internal Memory
- Rechargeable Li-ion Battery Included



ANY SHOT. EVERY SHOT. PERFECT SHOT.

# V10

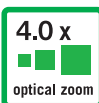


- 5.1MP with Super CCD-HR Sensor
- Real Photo Technology for Superior Image Quality
- Fujinon 3.4x Optical Zoom
- 6.7x Digital Zoom Expands to 19.4x Total Zoom Range
- Up to ISO 1600 at Full Resolution
- Picture Stabilization for Blur-less Photos
- Natural Light Mode
- Dual Shot Mode
- Huge 3" LCD, 230K Pixels
- Anti-glare LCD for Viewing in Bright Sunlight
- Four Selectable Scene Positions (Portrait, Landscape, Sport, Night)
- Movie Mode with Sound
- Rechargeable Li-ion Battery Included
- 6 Scene Modes Plus Movie Mode
- 4 Arcade Games for Entertainment



V-SERIES

## E900



- 9.0MP with Super CCD-HR Sensor
- Real Photo Technology with RP (Real Photo) Processor
- 4.0x Optical Zoom
- 7.6x Digital Zoom for 30.4x Total Zoom Range
- Up to ISO 800 at Full Resolution
- Built-in Flash with Red-eye Reduction
- Optical Viewfinder
- Large 2.0" LCD for Easy Shot Framing and Sharing
- Natural Light Mode
- Real Time Histogram
- Shoot in CCD-RAW or JPEG (Exif Ver. 2.2)
- 16MB xD Picture Card Included
- Three Selectable Scene Positions (Portrait, Sport, Night)
- Movie Mode with Sound
- Powered by 2x AA NiMH Rechargeable Batteries with Wall Charger (included)
- Flexibility from Simplistic Auto Mode to Full Manual Control



ANY SHOT. EVERY SHOT. PERFECT SHOT.

# S5200



- 5.1MP with Super CCD-HR Sensor
- Real Photo Technology with New RP (Real Photo) Processor
- Picture Stabilization for Blur-less Photos
- 10.0x Non-extending Optical Zoom
- 5.7x Digital Zoom for 57x Total Zoom Range
- Up to ISO 1600 at Full Resolution
- Built-in Flash with Red-eye Reduction
- Electronic Viewfinder
- Large 1.8" LCD
- Natural Light Mode
- Focus Assist Lamp for Low Light Focusing
- Flexibility from Simplistic Auto Mode to Full Manual Control
- Shoot in CCD-RAW or JPEG (Exif Ver. 2.2) File Formats for Still Photography
- Three Selectable Scene Positions (Portrait, Landscape, Night)
- Movie Mode with Sound
- 16MB xD Picture Card Included
- Powered by 4x AA Alkaline Batteries (included) or Optional 4x AA NiMH Rechargeable Batteries

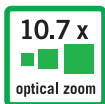


SERIES-S

powered by REAL PHOTO TECHNOLOGY

FUJIFILM

# S6000*fd*

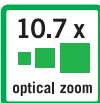


- 6.3MP Super CCD-HR Sensor
- Real Photo Technology for Superior Image Quality
- Face Detection Technology
- Picture Stabilization with Easy Mode Dial Access
- i-Flash Intelligent Flash System
- Natural Light Mode
- Dual Shot Mode
- Fujinon 10.7x Wide-Angle Zoom Lens
- 2x Digital Zoom for 21.4x Total Zoom Range
- Up to ISO 3200 at Full Resolution
- Large 2.5" LCD for Anti-glare Viewing in Bright Sun
- Electronic Viewfinder
- Low Light Gain Up for Easy LCD Viewing
- Eleven Selectable Scene Positions (Portrait, Landscape, Sport, Night, Fireworks, Sunset, Beach & Snow, Museum, Party, Flower Close-up, Text)
- Movie Mode with Sound
- 13MB Internal Memory
- 4x AA Alkaline Included



ANY SHOT. EVERY SHOT. PERFECT SHOT.

# S9100



- 9MP Super CCD-HR Sensor
- Real Photo Technology for Superior Image Quality
- Picture Stabilization for Blur-less Photos
- i-Flash Intelligent Flash System
- Natural Light Mode
- Fujinon 10.7x Wide-Angle Zoom Lens with Manual Zoom Control Ring
- 2x Digital Zoom for 21.4x Total Zoom Range
- Up to ISO 1600 at Full Resolution
- Tilting 2.0" LCD
- Significantly Improved Exposure Control Sophistication
- Advanced Scene and Manual Shooting Modes
- Newly Developed, Super Fast Image Processor
- Low Noise ISO 1600
- Hot-Shoe Mount for External Flash Systems
- Ultra-High Resolution Electronic Through-the-Lens Viewfinder
- Three Selectable Scene Positions (Portrait, Landscape, Night)
- Movie Mode with Sound
- Dual Slot xD and CF
- 4x AA Alkaline Included



SERIES-S

powered by REAL PHOTO TECHNOLOGY

FUJIFILM



ANY SHOT. EVERY SHOT. PERFECT SHOT.





# STRATEGIC ACCESSORIES & PERIPHERALS

ACCESSORIES

powered by REAL PHOTO TECHNOLOGY

FUJIFILM

# 16:1 CARD READER

- 3 Port USB Hub Reader
- High Speed USB 2.0 Cable
- Writes to all Popular Memory Cards
- Transfer Rate of Up to 480Mbps
- Driver CD-Rom
- User's Manual
- AC Adaptor
- Quick Start Guide



ANY SHOT. EVERY SHOT. PERFECT SHOT.

# xD MEDIA

Fujifilm xD-Picture Card is the ultimate solution for the exciting generation of compact digital cameras. xD-Picture Card is one of the smallest, lightest flash memory cards available today, yet it offers the fast read/write speed and high capacity that today's newest products require.

- Ultra-compact and lightweight –  
One of the smallest flash media cards available
- Provides high read/write speeds necessary for today's newest digital cameras
- Rigid memory card construction for exceptional durability
- For most xD-Picture Card compatible digital cameras
- Available in 256MB, 512MB, 1GB and 2GB
- Capable to record video



# DIGITAL ACCENTS

## SM05

- Protective Camera Case with Front Pocket
- Two NiMH Rechargeable Batteries (2000 mAh)
- Dual Charger for: AA (NiMH) or (Li-ion NP-40, NP-120)
- AC Adapter for Charger

## EC05

- Soft Padded Case with Belt Loop and Shoulder Strap
- Memory Wallet to Safely Transport Your Memory Cards
- Compact Mini-Tripod Folds for Easy Storage
- LCD Cleaning Cloth to Clean LCD and Lens
- Includes Four (4) Energizer e2 Batteries

## XL05

- Deluxe Expandable Travel Bag
- Four NiMH Rechargeable Batteries (2000mAh)
- Dual Charger for: AA (NiMH) or (Li-ion NP-40, NP-120)
- AC and Auto Charger Adapter
- Worldwide Outlet Adapter



# PIX Rx

Give your Fujifilm FinePix digital camera the protection it deserves!  
Get peace of mind and protection with a Limited Extended Warranty.

This Limited Extended Warranty provides an additional two (2) years of coverage under our standard new product warranty. Refer to the Extended Limited Warranty Agreement for exact terms and conditions.



# SPORT HOUSING

## A-series Aquamask™ Underwater Housing

- With a polycarbonate shell body, reinforced glass and silicone O-Ring this underwater housing is waterproof for depths of up to 10 feet (3 meters).
- This underwater housing is ideal for the pool, beach, boating, fishing, or other outdoor activities. Enjoy your digital camera in the outdoors!
- Compatible with A400 and A500 FinePix digital cameras

## WP-FXF30 Underwater Housing for FinePix F30

- The underwater housing is completely waterproof
- Pressure resistance of up to 131 feet (40 meters) under water



WP-FXF30

A-series Aquamask™



ANY SHOT. EVERY SHOT. PERFECT SHOT.

# CAMERA COMPARISON CHARTS



powered by REAL PHOTO TECHNOLOGY

**FUJIFILM**

COMP. CHARTS

# A SERIES

	A400	A500	A600	A700
Effective Pixels	4.1M	5.1M	6.3M	7.3M
Recorded Pixels	3.98M	5.03M	6.08M	7.3M
Zoom (Optical)	3X	3X	3X	3X
Zoom (Digital)	3.6X	5.2X	6.3X	6.3X
CCD	Super CCD-HR	Super CCD-HR	Super CCD	Super CCD-HR
Memory (Internal)	12MB	12MB	12MB	12MB
Movie Recording	320x240/ 160x120 pixels (10 frames/sec.)	320x240/ 160x120 pixels (10 frames/sec.)	320x240/ 160x120 pixels (10 frames/sec.)	320x240/ 160x120 pixels (10 frames/sec.)
Movie Audio	No	No	Yes (Mono)	Yes (Mono)
LCD Size	1.8" 4:3 Aspect	1.8" 4:3 Aspect	2.4" 4:3 Aspect	2.4" 4:3 Aspect
LCD Pixels	112k Pixels	112k Pixels	112k Pixels	112k Pixels
Self Timer	2 seconds/ 10 seconds	2 seconds/ 10 seconds	2 seconds/ 10 seconds	2 seconds/ 10 seconds
Scene Position Modes	Auto, Portrait, Landscape, Sport, Night Scene	Auto, Portrait, Landscape, Sport, Night Scene	Auto, Portrait, Landscape, Sport, Night Scene, Macro	Auto, Portrait, Landscape, Sport, Night Scene
Picture Stabilization	No	No	No	No
Natural Light Mode	No	No	No	No
Dual Shot Mode	No	No	No	No
i-Flash	No	No	No	No
Face Detection	No	No	No	No
Dimensions (WxHxD)	3.7" x 2.4" x 1.1"	3.7" x 2.4" x 1.1"	3.7" x 2.4" x 1.2"	3.7" x 2.4" x 1.2"
Weight (not including battery or media)	4.4 oz.	4.4 oz.	5.1 oz.	4.8 oz.
Tripod compatible	Yes	Yes	Yes	Yes
Included Accessories	USB (mini-B) Cable, Video Cable, Hand Strap, 2 AA Alkaline Batteries, CD-ROM with FinePix Viewer, User Manual	USB (mini-B) Cable, Video Cable, Hand Strap, 2 AA Alkaline Batteries, CD-ROM with FinePix Viewer, User Manual	USB (mini-B) Cable, Video Cable, Hand Strap, 2 AA Alkaline Batteries, CD-ROM with FinePix Viewer, User Manual	USB (mini-B) Cable, Video Cable, Hand Strap, 2 AA Alkaline Batteries, CD-ROM with FinePix Viewer, User Manual

ANY SHOT. EVERY SHOT. PERFECT SHOT.



# F SERIES

	F470	F650	F20	F30
Effective Pixels	6.0M	6.0M	6.3M	6.3M
Recorded Pixels	5.94M	5.95M	6.1M	6.09M
Zoom (Optical)	3X	5X	3X	3X
Zoom (Digital)	4.4X	4.4X	6.2X	6.2X
CCD	Square Pixel CCD	Square Pixel CCD	Super CCD-HR	Super CCD-HR
Memory (Internal)	16MB	16MB	10MB	12MB
Movie Recording	640x480/ 320x240 pixels (30 frames/sec.)	640x480/ 320x240 pixels (30 frames/sec.)	640x480/ 320x240 pixels (30 frames/sec.)	640x480/ 320x240 pixels (30 frames/sec.)
Movie Audio	No	Yes (Mono)	No	Yes (Mono)
LCD Size	2.5" 4:3 Aspect	3" 4:3 Aspect	2.4" 4:3 Aspect	2.5" 4:3 Aspect
LCD Pixels	112k Pixels	112k Pixels	112k Pixels	112k Pixels
Self Timer	2 seconds/ 10 seconds	2 seconds/ 10 seconds	2 seconds/ 10 seconds	2 seconds/ 10 seconds
Scene Position Modes	Auto, Portrait, Landscape, Sport, Night Scene, Beach and Snow, Sunset, Museum, Party, Flower Close-Up, Text, Manual	Auto, Portrait, Landscape, Sport, Night Scene, Beach and Snow, Sunset, Museum, Party, Flower Close-Up, Text, Macro	Auto, Portrait, Landscape, Sport, Night Scene, Fireworks, Beach and Snow, Sunset, Museum, Party, Flower Close-Up, Text	Auto, Portrait, Landscape, Sport, Night Scene, Fireworks, Beach and Snow, Sunset, Museum, Under- water, Party, Flower Close-Up, Text
Picture Stabilization	No	No	Yes	Yes
Natural Light Mode	No	No	Yes	Yes
Dual Shot Mode	No	No	Yes	Yes
i-Flash	No	No	No	Yes
Face Detection	No	No	No	No
Dimensions (WxHxD)	4.1" x 2.4" x 1.2"	4.1" x 2.4" x 1.2"	3.7" x 2.2" x 1.1"	3.7" x 2.2" x 1.1"
Weight (not including battery or media)	4.3 oz.	6 oz.	5.3 oz.	5.5 oz.
Tripod Socket	Yes	Yes	No	Yes
Included Accessories	USB Cable, A/V Cable, Hand Strap, NP-40N Li-ion Battery, CD-ROM with FinePixViewer, ImageMixer VCD2 LE for FinePix, Raw File Converter LE, User Manual	USB Cable, A/V Cable, Hand Strap, NP-40N Li-ion Battery, Battery Charger BC-40, CD-ROM with FinePix Viewer, and ImageMixer VCD2 LE for FinePix, User Manual	Li-ion battery NP-70, AC Power Adapter AC-5VC, Hand Strap, USB (mini-B) Cable, A/V Cable, CD-ROM with FinePix Viewer, ImageMixer VDC2 LE for FinePix, User Manual	USB Cable, A/V Cable, Hand Strap, NP-95 Li-ion Battery, AC Power Adapter AC-5VW, CD-ROM with FinePix Viewer and ImageMixer VCD2 LE for FinePix, User Manual

# S SERIES

## S5200

## S6000*fd*

Effective Pixels	5.1M	6.3M
Recorded Pixels	5.04M	6.1M
Zoom (Optical)	10X	10.7X
Zoom (Digital)	5.7X	2X
CCD	Super CCD-HR	Super CCD-HR
Memory (Internal)	n/a	10MB
Movie Recording	640x480/320x240 pixels (30 frames/sec.)	640x480/320x240 pixels (30 frames/sec.)
Movie Audio	Yes (Mono)	Yes (Mono)
LCD Size	1.8" 4:3 Aspect	2.5" 4:3 Aspect
LCD Pixels	115k Pixels	235k Pixels
Self Timer	2 seconds/10 seconds	2 seconds/10 seconds
Scene Position Modes	Auto / Manual / Programmed AE, Aperture or Shutter Priority AE 5 programmed Scene Type (SP) Anti-Blur, Natural Light, Night, Portrait, Landscape	Portrait, Landscape, Sport, Night, Fireworks, Sunset, Snow, Beach, Museum, Party, Flower, Close-Up, Text
Picture Stabilization	Yes	Yes
Natural Light Mode	Yes	Yes
Dual Shot Mode	No	Yes
i-Flash	No	Yes
Face Detection	No	Yes
Dimensions (WxHxD)	4.5" x 3.3" x 4.4"	5.2" x 3.8" x 5.0"
Weight (not including battery or media)	13.1 oz.	21.2 oz.
Tripod Socket	Yes	Yes
Included Accessories	16MB xD-Picture Card USB Cable A/V Cable Shoulder Strap Lens Cap 4x AA Alkaline Batteries FinePix Viewer ImageMixer VCD2 LE for FinePix Raw File Converter LE User Manual	4x AA Alkaline Batteries, Shoulder Strap, USB (mini-B) Cable, A/V Cable, Lens Cap, Lens Cap holder, Lens hood, CD-ROM with FinePix Viewer, ImageMixer VDC2 LE for FinePix and RAW File Converter LE, User Manual

ANY SHOT. EVERY SHOT. PERFECT SHOT.

# S SERIES

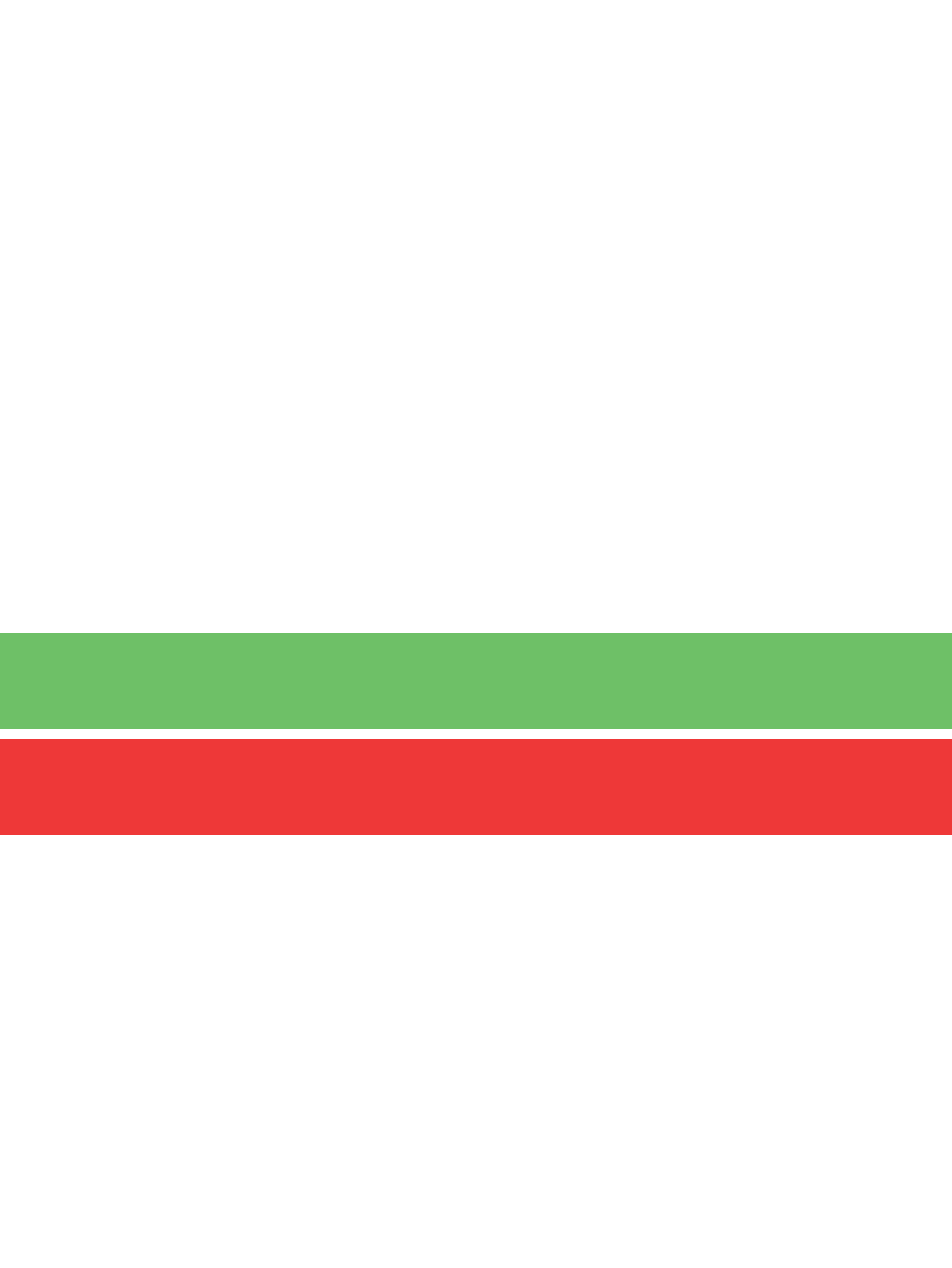
## S9000

## S9100

Effective Pixels	9M	9M
Recorded Pixels	9.12M	9.03M
Zoom (Optical)	10.7X	10.7X
Zoom (Digital)	2X	2X
CCD	Super CCD-HR	Super CCD-HR
Memory (Internal)	n/a	n/a
Movie Recording	640x480/320x240 pixels (30 frames/sec.)	640x480/320x240 pixels (30 frames/sec.)
Movie Audio	Yes (Mono)	Yes (Mono)
LCD Size	1.8" 4:3 Aspect w/ Adjustable tilt	2.0" 4:3 Aspect w/ Adjustable tilt
LCD Pixels	118k Pixels	235k Pixels
Self Timer	2 seconds/10 seconds	2 seconds/10 seconds
Scene Position Modes	Auto / Manual / Programmed AE, Aperture or Shutter Priority AE / 5 Preprogrammed Scene Types (SP) Anti-Blur, Natural Light, Night, Portrait, Landscape	Auto / Manual / Programmed AE, Aperture or Shutter Priority AE / 5 Preprogrammed Scene Types (SP) Anti-Blur, Natural Light, Night, Portrait, Landscape
Picture Stabilization	Yes	Yes
Natural Light Mode	Yes	Yes
Dual Shot Mode	Yes	Yes
i-Flash	No	Yes
Face Detection	No	No
Dimensions (WxHxD)	5.0" x 3.7" x 5.1"	5.0" x 3.7" x 5.1"
Weight (not including battery or media)	22.8 oz.	26.8 oz.
Tripod Socket	Yes	Yes
Included Accessories	16MB xD-Picture Card USB Cable A/V Cable Shoulder Strap Lens Cap Lens Cap Holder Lens Hood 4x AA Alkaline Batteries FinePix Viewer ImageMixer VCD2 LE for FinePix Raw File converter LE User Manual	4x AA Alkaline Batteries Shoulder Strap USB (mini-B) Cable A/V Cable for FinePix S9100 Lens Cap Lens Cap Holder Lens Hood CD-ROM 1 with USB Driver FinePix Viewer ImageMixer VCD2 LE for FinePix RAW file converter LE CD-ROM 2 with Hyper Utility Software User Manual

# Z/V/E SERIES

	Z3	V10	E900
Effective Pixels	5.1M	5.1M	9M
Recorded Pixels	5.04M	5.03M	9.12M
Zoom (Optical)	3X	3.4X	4X
Zoom (Digital)	5.7X	5.7X	7.6X
CCD	Super CCD-HR	Super CCD-HR	Super CCD-HR
Memory (Internal)	10MB	n/a	n/a
Movie Recording	640x480/320x240 pixels (30 frames/sec.)	640x480/320x240pixels (30 frames/sec.)	640x480/320x240 pixels (30 frames/sec.)
Movie Audio	Yes (Mono)	Yes (Mono)	Yes (Mono)
LCD Size	2.5" 4:3 Aspect	3.0" 4:3 Aspect	2" 4:3 Aspect
LCD Pixels	230k Pixels	230k Pixels	115k Pixels
Self Timer	2 seconds/10 seconds	2 seconds/10 seconds	2 seconds/10 seconds
Scene Position Modes	Auto, Portrait, Landscape, Sport, Night Scene, Fire- works, Beach and Snow, Sunset, Museum, Party, Flower Close-Up, Text, Manual	Auto, Portrait, Landscape, Sport, Night Scene	Auto / Manual / Pro- grammed AE, Aperture or Shutter Priority AE, 4 Preprogrammed Scene Types (SP) Natural Light, Portrait, Sports, Night
Picture Stabilization	Yes	Auto	No
Natural Light Mode	Yes	Yes	Yes
Dual Shot Mode	Yes	Yes	No
i-Flash	Yes	No	No
Face Detection	No	No	No
In-Camera Games	No	Yes (4)	No
Dimensions (WxHxD)	3.5" x 2.2" x .08"	3.3" x 2.5" x 0.9"	4.0" x 2.5" x 1.4"
Weight (not including battery or media)	4.6 oz.	5.5 oz.	7.1 oz.
Tripod compatible	Yes	Yes	Yes
Included Accessories	Li-ion battery NP-40, AC Power Adapter AC-5VC, Hand Strap, USB (mini-B) Cable, A/V Cable, Picture Cradle CP-FXZ3, CD-ROM with FinePix Viewer, Image- Mixer VDC2 LE for FinePix, User Manual	USB Cable, A/V Cable, Hand Strap, NP-40 Li-ion Battery, 16MB xD Picture Card, CD-ROM with FinePixViewer, ImageMixer VCD2 LE for FinePix, Raw File Converter LE, User Manual	16MB xD-Picture Card USB (mini-B) Cable A/V Cable Hand Strap 2 NiMH AA Batteries Battery Charger BC-NH02 FinePixViewer ImageMixer VCD2 LE for FinePix Raw File converter LE User Manual





For more information: [www.Fujifilmusa.com](http://www.Fujifilmusa.com)

1.800.800.FUJI

Fujifilm U.S.A.

200 Summit Lake Drive

Valhalla, NY 10595