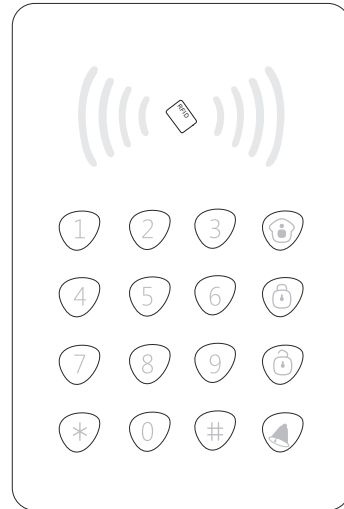


# Wireless keypad



## User manual

Please read this user manual carefully before operate keypad.  
Please keep this user manual properly for accessible reference.

## Table of Contents

---

### Product Introduction

|                           |     |
|---------------------------|-----|
| Preface                   | 1   |
| List of items             | 1   |
| Keypad Status instruction | 2   |
| Product structure chart   | 3-4 |

### Preparation before usage

|                                |   |
|--------------------------------|---|
| Power-on                       | 5 |
| Coding keypad with alarm panel | 5 |
| Keypad installation            | 6 |

### Function setting

|                                  |       |
|----------------------------------|-------|
| Enter setting status             | 7     |
| Set arm delay                    | 7     |
| Coding and deleting the RFID tag | 9     |
| RFID tag disarm setting          | 10    |
| Change user password             | 11    |
| Change administrator password    | 11-12 |
| Factory reset                    | 12    |

### Keypad usage

|               |    |
|---------------|----|
| Away arm      | 13 |
| Disarm        | 14 |
| Home/Stay arm | 15 |
| Doorbell      | 15 |

### Precautions

|             |    |
|-------------|----|
| Cautions    | 16 |
| Maintenance | 16 |

### FAQ

|                            |    |
|----------------------------|----|
| Frequently asked questions | 17 |
|----------------------------|----|

### Technical parameters

|                      |    |
|----------------------|----|
| Technical parameters | 18 |
|----------------------|----|

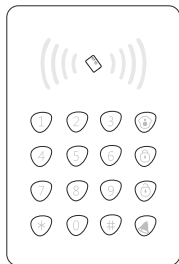
## Preface

---

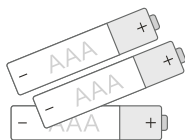
Thanks for your purchase. This keypad can be installed at the entrance. By input password, users can easily operate the keypad to fulfill functions such as away arm, disarm, home arm, doorbell, RFID disarm etc.

## List of items

---



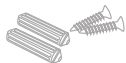
Wireless keypad\*1



Dry battery AAA\*3



User manual\*1



Setscrews and screws\*2

## Keypad Status instruction

---

1.Normal working status: the LED will light on 3 seconds if user press any numeric keys. After 3 seconds, the LED will light off automatically if there is no further operation.

2.Dormant status: usually the keypad will enter dormant status if there is no further operation within 30 seconds.(By Press any button, the keypad will enter working status. And if the keypad detect battery in low voltage before dormant status, it will send low voltage signal to alarm panel.)

3.RFID swiping card status: press "\*" button, LED lights on and the keypad will enter swiping tag status. If the keypad detect the RFID tag or if there is no tag within 10 seconds, then the keypad will return to dormant status.

4.Setting status: input Administrator password and then press "#" button, the keypad will enter functional setting status. The LED will flash at 500ms. Press "\*" button to exit or if there is no operation within 30 seconds, the keypad will exit from functional setting status and enter return to dormant status.

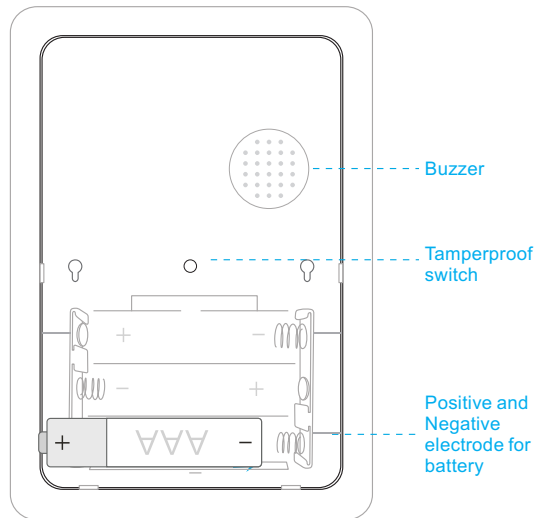
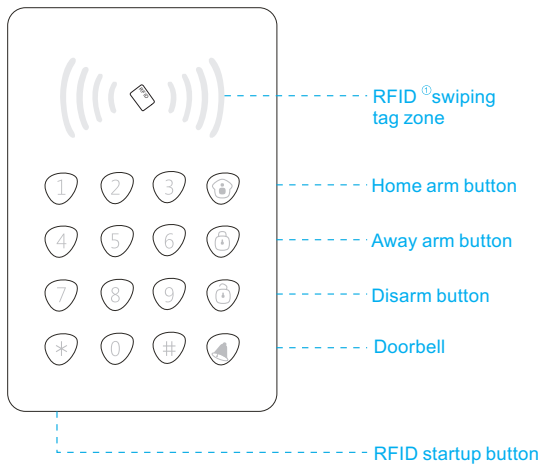
Note: if operation is correct, the buzzer will make a sound like "beep".

if operation is wrong, then the buzzer will make two sounds like "beep, beep".

Under normal working status, press other keys except the "\*" button and numeric keys, the input will end.

Under functional setting status, press "#" button to end the input.

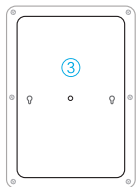
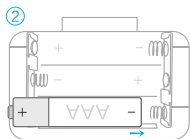
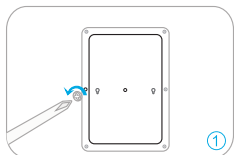
## The keyboard structure



- ① Users can buy more RFID tag, one keypad can work with maximum 60pcs tags.

## Preparation before usage

### Power-on



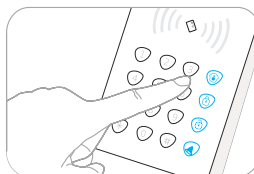
1. The keypad work with three AAA batteries.

- ① As shown in picture, unscrew the screws and open the base.
- ② Install the batteries according to the battery polarity direction indicated
- ③ Close the lower cover and lock screws.

### Coding keypad with alarm panel

When alarm panel is under learning status, Arm/Disarm keypad twice, then you will see corresponding success feedback on the alarm panel. (please refer to alarm system's user manual)

**Note:** if the alarm panel make two sounds like "beep-beep" during coding, this shows that the keypad have already coded with the alarm panel.

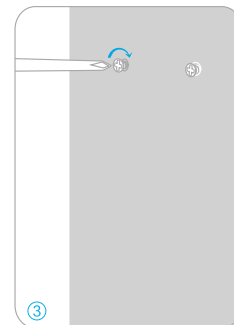
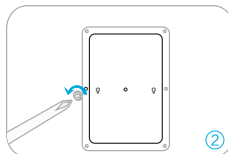
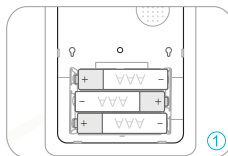


① Default user password: 1111.

## Keypad installation

The keypad should be installed on the door or wall before usage.

- ① Unscrew the screws , open the base and put batteries in keypad.
- ② Assemble keypad well, tighten the screws.
- ③ Fix the setscrews on the door/window/wall.
- ④ Buckle the keypad on the setscrews appropriately.

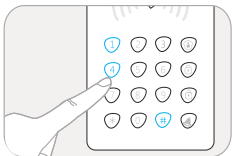


**Note:** keypad will trigger tamper-switch alarm when you take down the keypad, users can stop alarming of keypad by following disarm operations.

## Coding and deleting the RFID tag

---

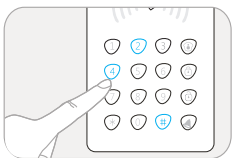
### Coding the RFID tag:



Enter **【\*+password+8+#】** into learning status→ 4-digits password, the default password is 1111. Then swiping RFID tag, you will hear one long beep which means learning success. It will turn into Standby status after 5 seconds.

**Notice:** after enter learning status, you could swipe RFID tag continuously to learn 60 tags in maximum. If tag had already been learned to alarm panel before, it will sound Beep, Beep, Beep,

### Deleting the RFID tag:



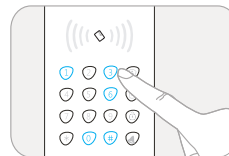
Enter **【\*+password+7+#】**, you will hear one long Beep which means delete all tags successfully.

## Set RFID tag to disarm function setting

---

Users can open and close the function of swipe RFID tag to disarm.

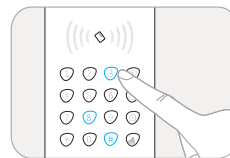
### Open the function of swipe RFID tag to disarm:



Press \* button. keypad light, swipe tag twice, you will hear two Beep Beep. Then it will send disarm signal to alarm panel.

## Change user password

---



Enter **【\*+password+9+NEW password+#】** → old password & new password should be 4-digits, the default password is 1111

## Keypad usage

As a kind of accessory in alarm system, keypad is a terminal control tool and it can replace remote controllers. Users need input users' password or Administrator password to use keypad control panel.

### Away arm

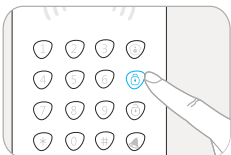
Users need to Away Arm alarm panel when go out of home.

Users can arm the panel at home if the keypad set to have delay arm function. And users need to leave home before delayed time arrives.

Enter 【\*+ password + Away Arm button】 → 4-digits password, the default password is 1111.

You will hear one long Beep, then keypad will transmit away arm signal to alarm panel for one second.

**Notice:** if you hear two Beep Beep, it means wrong password.



When the panel receive the arm signal, its built-in siren will make a sound and its away arm indicator light on, all alarm zones in the alarm panel enter the arm status(depend on the alarm panel).

If there is alarm happen, then the panel will make alarm sounds and automatically send SMS and make call to the users whose phone numbers have preset in the panel.(depend on the alarm panel)

## Disarm

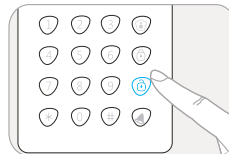
Users can disarm via RFID tag and keypad.

### Keypad disarm

Enter 【\*+password + Disarm button】 → 4-digits password, the default password is 1111.

You will hear one long Beep, then keypad will transmit disarm signal to alarm panel for one second.

**Notice:** if you hear two Beep Beep, it means wrong password.

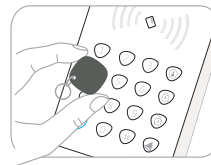


When the panel receive disarm signal, it will make two sounds, its arm indicator light off, and its disarm indicator light on.(depend on the alarm panel)

All alarm zones would enter disarm status, accessories won't trigger alarm.(depend on panel)

### Swipe RFID tag to disarm

Press \* button. keypad light, swipe tag twice, you will hear two Beep Beep. Then it will send disarm signal to alarm panel.



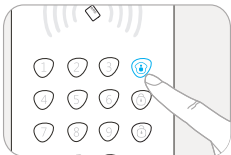
## Stay arm

Users can Stay Arm alarm panel when at home.

Enter 【\*+password + Stay Arm button】 → 4-digits password, the default password is 1111.

You will hear one long Beep, then keypad will transmit stay arm signal to alarm panel for one second.

Notice: if you hear two Beep Beep, it means wrong password.

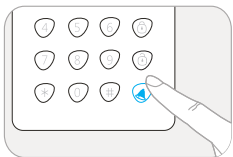


When panel receive the stay arm signal, its built-in siren would make a sound and its stay arm indicator light on.(depend on alarm panel)

Then the alarm panel enter stay arm status.(depend on alarm panel)  
Sensors set in the home mode zones would be at disarm status, so that families can leisurely stay at home and won't trigger alarm. And sensors in other zones would be at arm status to defend intruders.

## Doorbell

When the keypad under normal work status, users can press [\[doorbell\]](#) button, and then the keypad will send doorbell signal to the panel.



When the panel receive the doorbell signal, it will make "dingdong" sounds.(depend on alarm panel)

## Precautions

Users need to follow below items in order to make the keypad have longer working life, and also to prevent injury to users and others during operation.

## Cautions

| General instructions  |
|---|
| Keypad should coding with panel before usage  |
| It may affect the wireless signal transmission distance when keypad under low voltage   |
| Keypad powered by 3pcs AAA battery  |
| Please take out the insulation tape inside battery compartment before operate keypad  |
| Regular routine inspection, timely remove malfunction, avoid system failure at critical moment  |
| Keypad do not support waterproof and moisture proof function, keypad should be installed at cool and dry place.   |
| Keypad shell is made from ABS material. Do not exposure keypad long time, otherwise keypad working time would be shorter.                                     |
| Forbidden   |
| Keypad is non-explosion-proof product; please do not install it at where there is combustible and explosive.  |
| Please do not install the keypad near electromagnetic object and the object which would generate thermal energy such as heaters, air-condition and microwave. |
| Decomposition Forbidden   |
| Do not disassemble keypad when users discard it.  |
| Only professionals can disassemble this keypad.   |

## Maintenance

Users can use soft cloth or paper towels to clean the keypad if there is dust and marks on its surface.

If there is dirt on keypad, users can use soft cloth with alkaline cleaning fluid to clean it. Users need to dry the keypad after cleaning.



## Frequently asked questions

| Phenomenon                                   | Cause   | Solution   |
|--|---|--|
| No reaction during operation                 | Low voltage                                       | Change battery   |
|  | Install Batteries wrongly in keypad               | Install batteries in right way   |
| Coding failed between keypad and alarm panel | No action on alarm panel                          | Ensure panel has turned on   |
|  | Alarm panel make two sounds like "beep-beep"      | Ensure panel has entered coding status<br>Keypad has coded with panel (depend on panel)          |
| Cannot use keypad control panel              | Keypad has not coding with panel                  | Code the keypad with panel   |
|  | The distance between keypad and panel is too long | Make the distance shorter so that can work<br>Use signal repeater to longer the working distance |
| Cannot use tag to disarm alarm panel         | Tag has not coded with keypad                     | Coding tag with keypad   |
|  | Disable swipe RFID tag to disarm function         | Open swipe RFID tag to disarm function   |
|  | Close swipe tag function on keypad                | Press [*] button on keypad and then swipe tag  |
| Cannot set keypad functions                  | Did not input Administrator password              | Input right Administrator password, and then press [*] button to activate keypad                 |
| Cannot away arm/home arm/disarm alarm poanel | Did not input password                            | Input right Administrator password and user password then try to control panel                   |

## Technical parameters

**Product name:**

wireless keypad

**Work power:**

Three AAA batteries

**Standby current:**

≤30uA

**Emission current:**

≤20mA

**Tag quantity that keypad support:**

60pcs

**Wireless distance:**

≥80M (open area, no interference)

**Wireless frequency:**

868/433Mhz

**Shell material:**

ABS plastic

**Working condition:**

Temperature: -10°C~55°C

Humidity: 80%RH (no condensation)

**Size(length\*width\*height):**

138\*89\*17mm

|  |                               |                        |                             |
|--|-------------------------------|------------------------|-----------------------------|
| 产品型号<br>Model  | -                             | 部件名称<br>Component name | 说明书<br>User manual          |
| 设计<br>Design   |                               | 材料<br>Material         | 壳书写纸<br>Shell writing paper |
| 印刷尺寸<br>Print size                                     |                               | 成品尺寸<br>Finished size  |                             |
| 工艺<br>Crafts   | 骑马钉-32P<br>Saddle stitch -32P | 版本<br>Version          |                             |
| <p>注：双色、双面印刷<br/>Note: bicolor and dual page print</p> |                               |                        |                             |