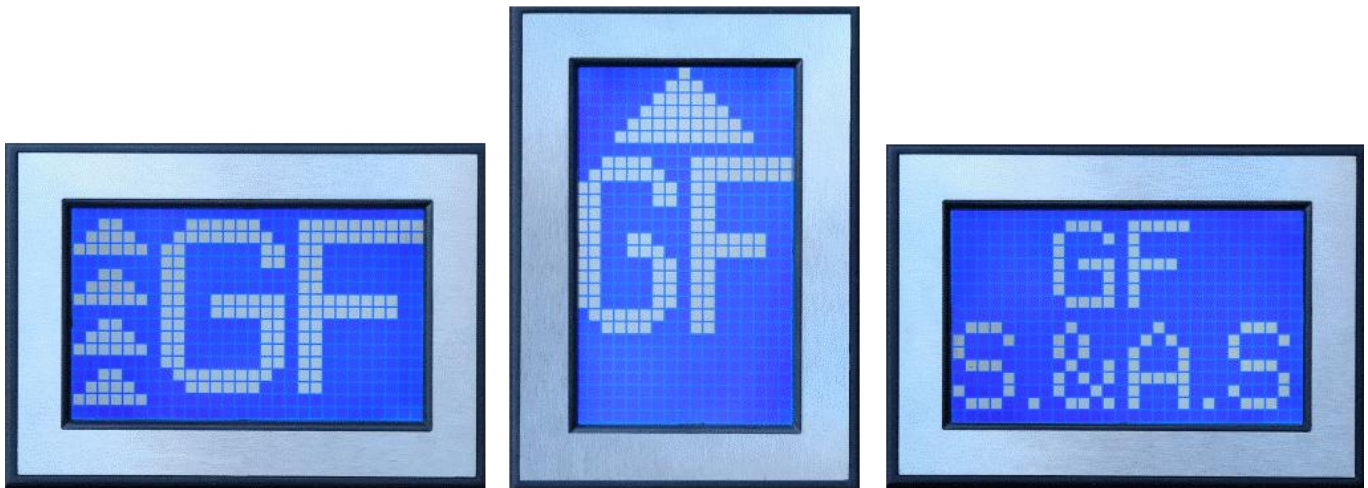




UNIVERSAL PROGRAMMABLE SCROLLING LCD

REF. UNILCD V1.1



USER'S MANUAL

FOR SW VERSION 1.00
1514

Beirut Office:
Boutros Building 1st Basement
Cheikh-el-Ghabi Street
Ghabi Beirut 2068 7808
Lebanon
Tel: +961 1 216 994
Fax: +961 1 339 600

Headquarters & Factory:
S. & A. S. Building
Seaside Road
Jieh Chouf
Lebanon
Tel: +961 7 996 333
Fax: +961 7 996 116

Website:
www.sascontrollers.com

Technical Support & Email:
Tel: +961 71 996 333
support@sascontrollers.com

1. GENERAL DESCRIPTION	3
1.1 TECHNICAL DATA	3
2. FUNCTION DESCRIPTION	3
2.1 SETTING AND ACCESSING THE MENU.....	3
2.2 FLOOR CONFIGURATION	4
2.3 DISPLAY CONFIGURATION.....	4
2.4 FLOOR GREETING MESSAGES.....	5
2.5 SPECIAL MESSAGES.....	5
3. INSTALLATION AND MOUNTING	5
3.1 INSTALLATION	5
3.2 MOUNTING.....	5
4. UNILCD DESKTOP APPLICATION	5
4.1 INSTALLING THE UNILCD DRIVER.....	5
4.2 INSTALL DESKTOP APPLICATION PROCESS.....	5
4.3 RUNNING UNILCD DESKTOP APPLICATION.....	8
5. UNILCD MOBILE APPLICATION	12
5.1 INSTALLING THE UNILCD APPLICATION	12
5.2 RUNNING UNILCD MOBILE APPLICATION	12

1. GENERAL DESCRIPTION

The UNILCD is a universal scrolling display for the elevator floor information. It is capable of handling up to 32 floors with the possibility of editing and modifying the display contents for each floor. It has a 28x17 pixels graphic display. Three push buttons are provided to access the menu and change the display contents of each floor as well as modify the display configuration and function. Furthermore, a Desktop application and an Android application are provided to access the menu and change its contents.

1.1 TECHNICAL DATA

Supply voltage	Board supply: 22Vdc +15% -25%
Inputs	Input active voltage level is: 22Vdc for A, B, C, D and E inputs 0Vdc for arrows when ALo ¹ is set to Yes 22Vdc for arrows when ALo ¹ is set to No
Connection	Screw type, plug-in connectors
Dimensions	Screen: 83mmx49mm Case: 113mmx81mmx34mm

2. FUNCTION DESCRIPTION

The content of the memory corresponding to the floor set by the gray or binary (set by **Ind**) inputs is displayed (GF, B1, M, 1 ...). Every change on the floor information inputs triggers the scrolling of the display to reflect the content of the newly selected floor. The scrolling direction depends on the elevator direction and on the **Sdr** setting. Arrows are also shown on the display².

2.1 SETTING AND ACCESSING THE MENU

To access the parameters menu, press the **SELECT/OK** push button. You will be prompted to enter a password. The password consists of 3 digits. It is provided by S. & A.S. Co. Ltd. It is referred to as client password. The first digit on the left starts blinking. Use the **NEXT/DEC** push button to decrement the digit and the **PREV/INC** push button to increment the digit. When the desired digit is reached, push the **SELECT/OK** push button. The digit is accepted and replaced by “*”. The next digit starts blinking. Repeat the above procedure for the remaining 2 digits. If you have entered the right password, access to the menu will be granted. Otherwise, access will be denied. Once you entered the menu, the **PREV/INC** and **NEXT/DEC** push buttons are used to scroll up and down respectively in the menu list. Pressing the **SELECT/OK** push button will edit the value of the parameter displayed. Use the **PREV/INC** or **NEXT/DEC** push buttons to respectively increase or decrease the value. Press the **SELECT/OK** push button to save new value. Following is a description of the parameters:

Display	Description	Range	Factory setting
FLr Cfg	Sets the contents to be displayed for each floor.	0...9, blank, -, +, A...Z, a...z	GF to 31
SMS	Selects the greeting messages according to the location of the UniLCD (cabin or hall) or disables greeting messages all together.	Dis, Hal, Cab	Dis
MES	For hall with wide or long selection, hall greeting message will be displayed when both arrows are inactive. For hall with double selection, hall greeting message will be displayed all the time. For cabin with wide or long selection, no hall greeting message is displayed. For cabin and double selection, hall greeting message will be displayed when one of the arrows is blinking. If the message is shorter than 39 characters, it can be ended by entering CR ↵.	39 Characters	Welcome
MET	Sets the delay in seconds to display the greeting message when both arrows are inactive. Applicable only for hall with wide or long selection.	5 to 99	10 sec

¹ REFER TO SECTION 2.1 TO ACCESS **ALO** SETTING

² REFER TO SECTION 2.3 FOR MORE DETAILS

Display	Description	Range	Factory setting
Fir MES	For cabin selection, greeting message of each floor will be displayed when both arrows are inactive or one of the arrows is fixed. For each floor, a greeting message will be entered to be displayed. If the message is shorter than 39 characters, it can be ended by entering CR ↵.	39 Characters	Welcome
Ctr	Sets the display contrast.	0 to 30	10
Sdr	Sets the scroll direction.	Dn, Up, Non	Dn
ALo	When Yes is selected, Up and Down arrow become active low.	Yes, No	Yes
Ind	Selects the floor coding.	gra, bin	gra
LCo	Selects the character display color.	Whi, Blu	Whi
LCn	Selects the display configuration.	Wid, Lng, Dbl	Wid
Lng	Sets the special messages language ¹ .	Eng, Fre, Swe, Spa	Eng
Bas	Sets the number of basements. Once the basement number is selected, the floors configuration will be updated automatically. The basements configuration will have "B#" format.	0 to 9	0
Mez	Indicates the presence of one mezzanine floor. Once the mezzanine is modified the floors configuration will be updated automatically. When set to Yes, the mezzanine floor is added with " M" configuration between GF and first floor.	Yes, No	No
Flp	Flips display upside down, it is adjusted according to the viewing angle.	Yes, No	No
FSt	Load factory setting.	-	-
Ext	Exit menu.	-	-

2.2 FLOOR CONFIGURATION

The memory content of each floor can be modified by following the steps below:

1. Make sure that the display is powered; it should show the memory content of the currently selected floor.
2. Enter the menu and select **FLr CFg**, to change the configurations of the floors
3. The display will show the first floor number on line 1. The corresponding memory content is shown on the second line.
4. Use the **NEXT/DEC** or **PREV/INC** push button to scroll to the desired floor.
5. Press the **SELECT/OK** push button. The leftmost character of the memory content of this floor starts blinking
6. Use the **NEXT/DEC** or **PREV/INC** push button to scroll to the desired leftmost character (0...9, blank, -, +, A...Z, a...z)
7. Press the **SELECT/OK** to save the leftmost character content. The rightmost character starts blinking.
8. Use the **NEXT/DEC** or **PREV/INC** push button to scroll to the desired rightmost character (0...9, blank, -, +, A...Z, a...z)
9. Press the **SELECT/OK** to save the rightmost character content.
10. To exit the floor configuration, scroll to F00 and Press **NEXT/DEC** or scroll to F31 and Press **PREV/INC** to show **FLr CFg** page.

2.3 DISPLAY CONFIGURATION

The character display color can be white or blue. Selection is done by **LCo**.

The display has 3 configurations:

1. Horizontal wide: Selection by setting **LCn** to **Wid**. The display is mounted horizontally and uses the full screen to show the floor information in big characters. Arrows are shown on the side. When a greeting message is displayed the screen will be splitted into two horizontal lines.
2. Vertical: Selection by setting **LCn** to **Lng**. The display is mounted vertically and uses the full screen to show the floor information in big characters. Arrows are shown on top and bottom.

¹REFER TO SECTION 2.5 FOR MORE DETAILS

- Horizontal with 2 lines: Selection by setting **LCn** to **DbI**. The display is mounted horizontally. It uses first line to show the floor information. The second line is used for the greeting messages. Arrows are shown on the side of first line.

The display can be flipped upside down according to the viewing angle. Selection is done by **Flp**. To elaborate, for **Wid** and **DbI**, flip should be set to **Yes** for eye level or lower mounting. Moreover, for **Lng** configuration, flip should be set to **Yes** for right hand side mounting.

2.4 FLOOR GREETING MESSAGES

The greeting message content of each floor can be modified by following the steps below:

- Make sure that the display is powered; it should show the memory content of the currently selected floor.
- Enter the menu and select **FLr MES** to change the content of the greeting message of each floor.
- The display will show the first floor number on line 1. The corresponding greeting message content is shown on the second line.
- Use the **NEXT/DEC** or **PREV/INC** push button to scroll to the desired floor.
- Press the **SELECT/OK** push button. The first character of the greeting message of this floor starts blinking.
- Use the **NEXT/DEC** or **PREV/INC** push button to scroll to the desired character.
- Press the **SELECT/OK** to save the first character content. The second character starts blinking.
- Repeat the same procedure to enter the whole floor message.
- ↵ is entered to end the greeting message.
- To exit the floor messages, scroll to F00 and Press **NEXT/DEC** or scroll to F31 and Press **PREV/INC** to show **FLr MES** page.

2.5 SPECIAL MESSAGES

When a S. & A.S. controller is connected to UNILCD and the display type is set to “enhanced”, six different special messages will be displayed according to the lift status. The language of these messages is selected by **Lng**:

- English (Wait, Maintenance, out of service, call maintenance, evacuation, over load).
- French (Attendre, Revision, Hors service, Appeler service, Evacuation, Charge max).
- Swedish (Vänta, Service, Out of service, Call maintenance, evacuation, overlast).
- Spanish (Espere un momento, En mantenimiento, Fuera de servicio, Llamar a mantenimiento, evacuacion, Sobrecarga).

3. INSTALLATION AND MOUNTING

3.1 INSTALLATION

Connect terminals P and GND to power supply.

Connect terminals A, B, C, D and E of the UNILCD board directly to A, B, C, D and E of the controller board.

Connect terminals UP and DOWN of the UNILCD board directly to UP and DOWN arrow of the controller board.

3.2 MOUNTING

Mounting plate thickness: 0.8mm to 5mm.

Cutout in mounting plate: 111mmx71mm.

No need for welded studs (screws).

4. UNILCD DESKTOP APPLICATION

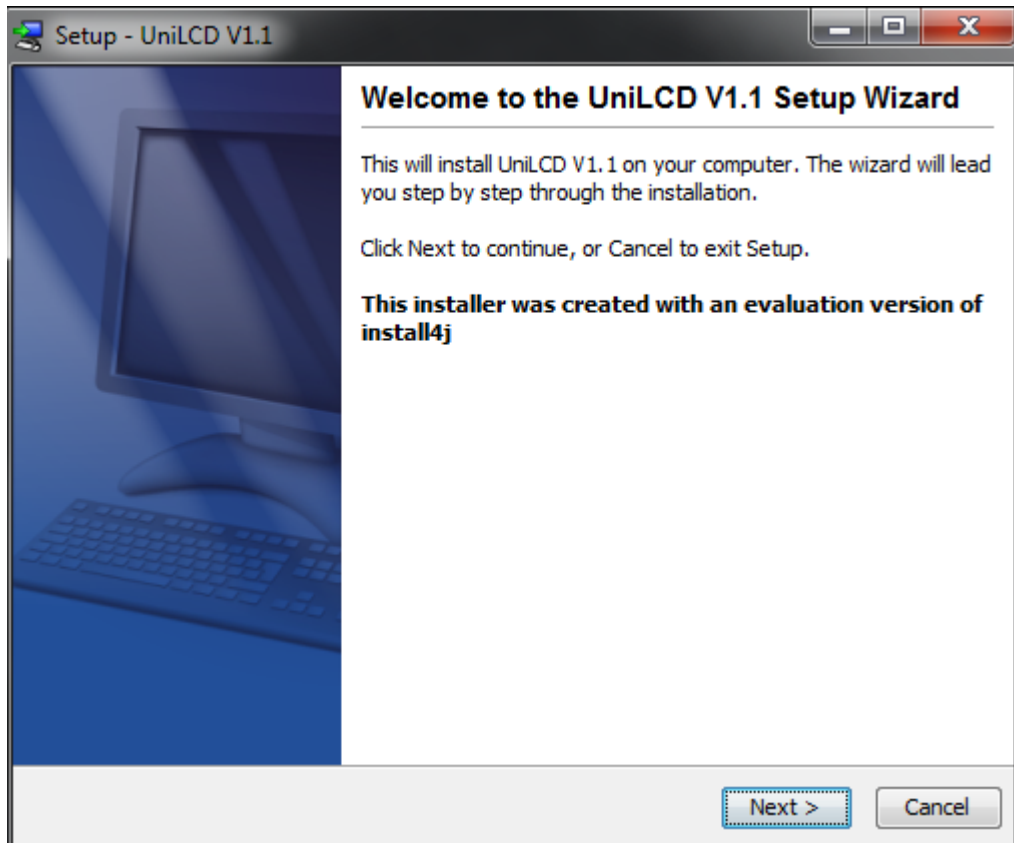
4.1 INSTALLING THE UNILCD DRIVER

In order to install the application on a computer, a CD is provided by S.&A.S.Ltd and the below steps shall be followed:

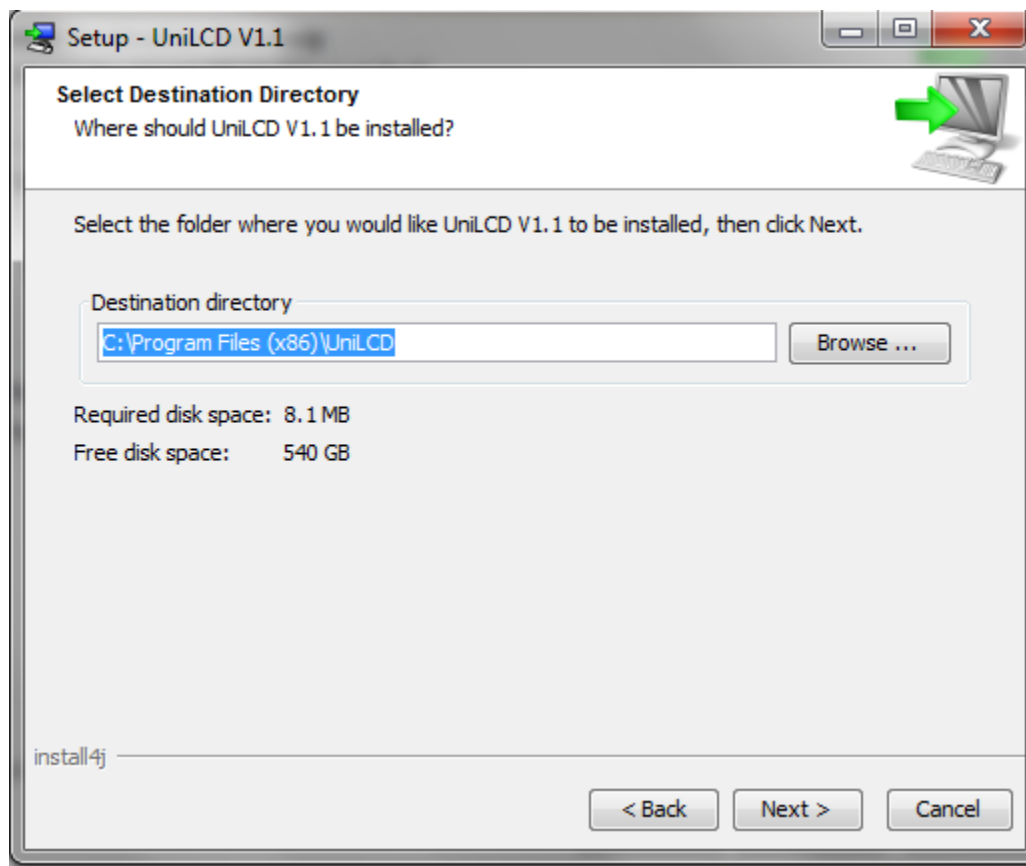
- Run file “SAS_Patch.exe” located in “UniLCDDriver” folder.
- Plug in the USB cable to the UniLCD device before turning power on.
- Turn on the UniLCD device.

4.2 INSTALL DESKTOP APPLICATION PROCESS

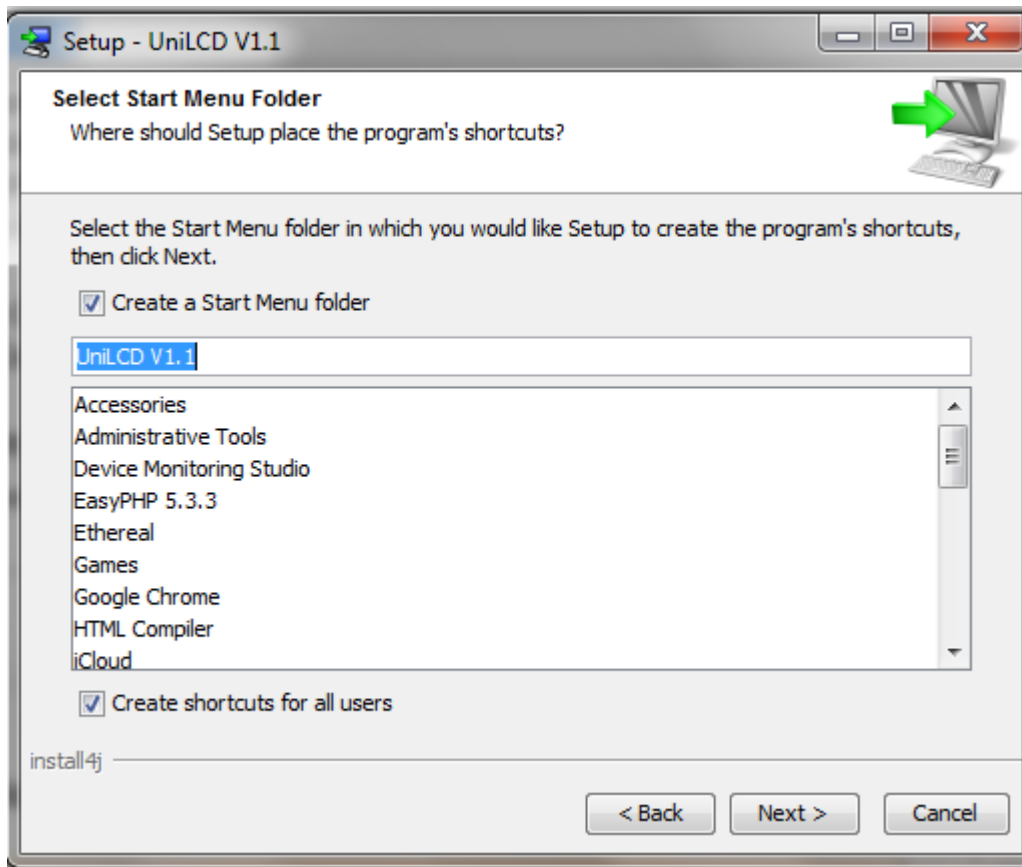
- Run “UniLCD_windows_1_1” application.
- Click next to continue the installation.



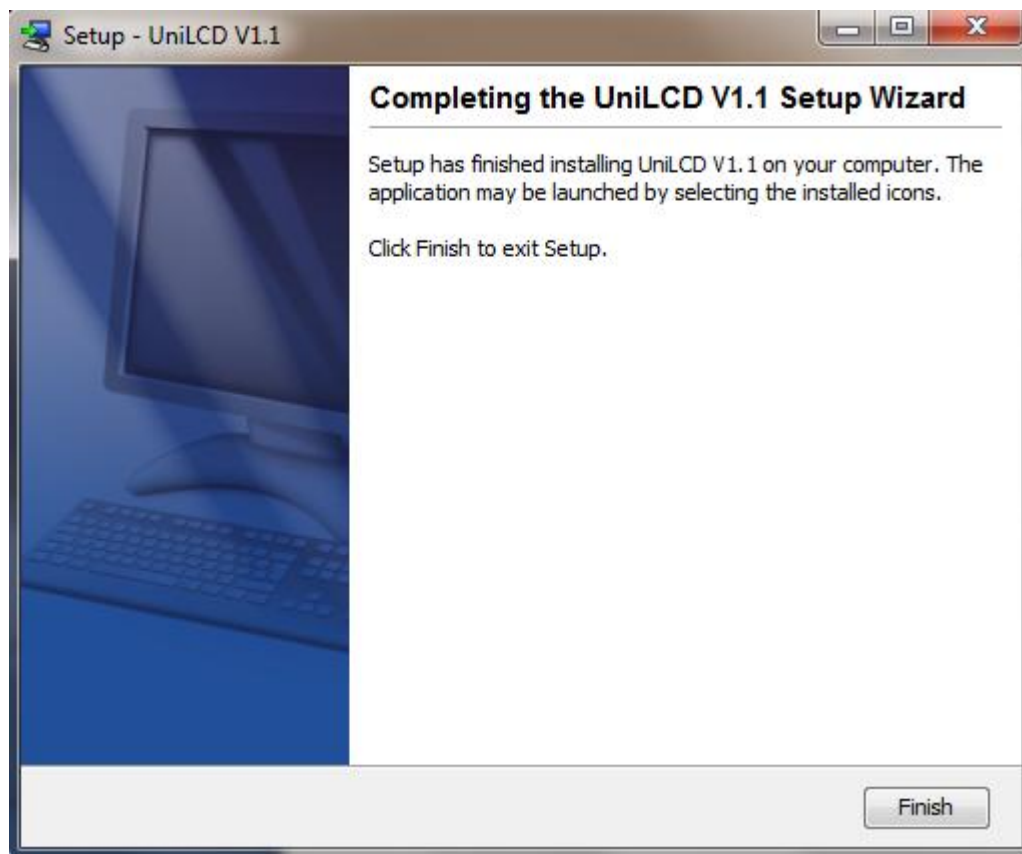
3. Choose the destination directory of the application.



4. Select the folder where the shortcut will be created.



5. The UniLCD Application is installed successfully.



4.3 RUNNING UNILCD DESKTOP APPLICATION

1. Run the application

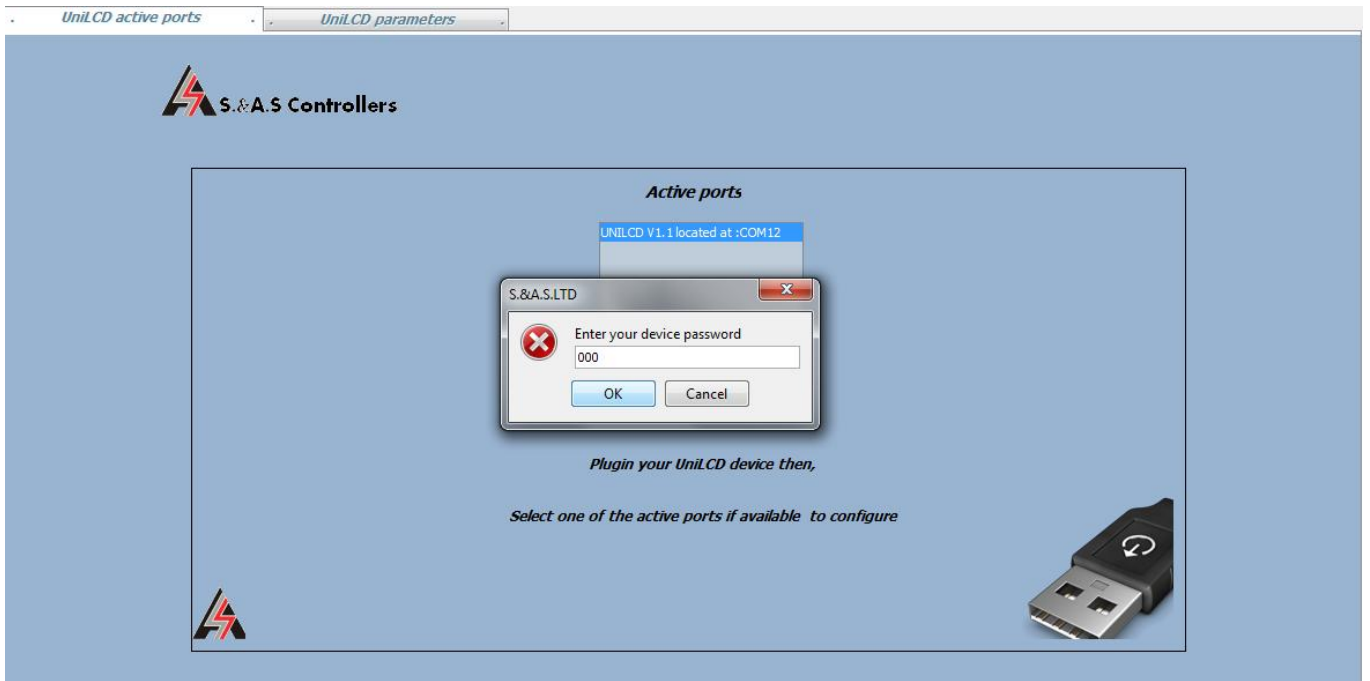


2. Plug-in your UniLCD. There is a beep signaling that your PC has detected your device. Click on the refresh button.

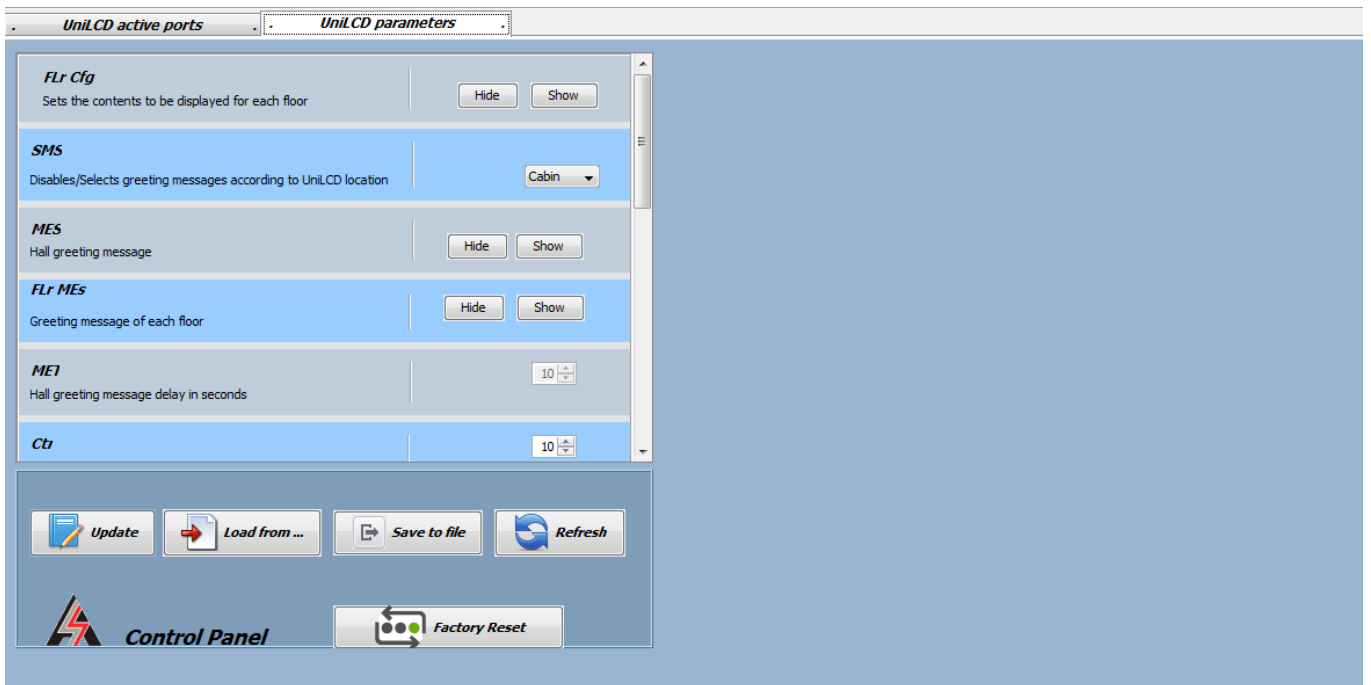


Your device name along with the com port number will appear in the box.

3. Click on your device name. Enter your UniLCD password. Press ok button to start accessing the UniLCD settings.



If your password is correct the UniLCD parameters tab will open.



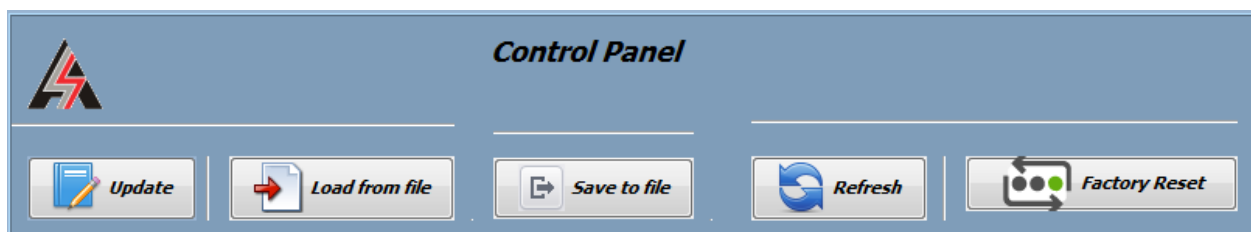
- Below is the parameters table:

FLr Cfg Sets the contents to be displayed for each floor	Hide Show
SMS Disables/Selects greeting messages according to UniLCD location	Disabled ▾
MES Hall greeting message	Hide Show
FLr MES Greeting message of each floor	Hide Show
MEI Hall greeting message delay in seconds	10 ▾
Ctr Sets the display contrast	10 ▾
Sdr Sets the scroll direction	Down ▾
ALo When yes is selected, Up and Down arrows become active low	No ▾
Ina Selects the floor coding	Gray ▾
LCo Selects the display color	White ▾
LCn Selects the display configuration	Wide ▾
Lng Sets the language	English ▾
Bas Sets the number of basements and update the floor configuration accordingly	0 ▾
Mez Indicates the presence of mezzanine floor and update the floor configuration accordingly	No ▾
Flp Flips display upside down. Adjusted according to viewing angle	No ▾

- Floor configuration and greeting messages can be seen and modified.

Floor #	FLr Cfg	Floor #	Floor Greeting Messages
0	G ▾ F ▾	0	Welcome
1	0 ▾ 1 ▾	1	Welcome
2	0 ▾ 2 ▾	2	Welcome
3	0 ▾ 3 ▾	3	Welcome
4	0 ▾ 4 ▾	4	Welcome
5	0 ▾ 5 ▾	5	Welcome
6	0 ▾ 6 ▾	6	Welcome
7	0 ▾ 7 ▾	7	Welcome
8	0 ▾ 8 ▾	8	Welcome

- Control panel buttons :
 - Update:** To download the displayed parameters on the UniLCD.
 - Load from file:** Load parameters from file to display.
 - Save to file:** Save the displayed parameters in a file.
 - Refresh:** Reload parameters from UniLCD.
 - Factory Reset:** Display the factory settings.



5. UNILCD MOBILE APPLICATION

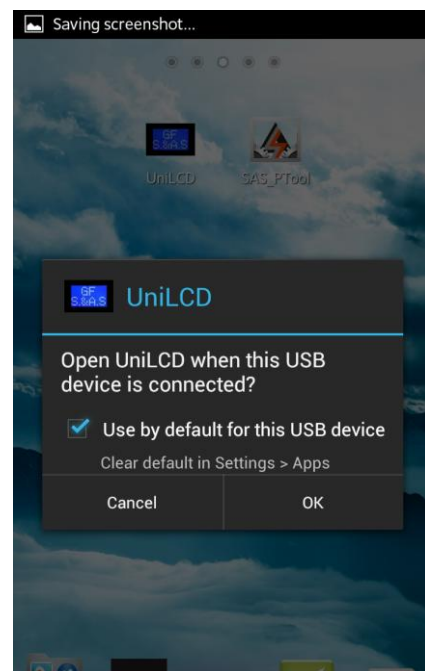
5.1 INSTALLING THE UNILCD APPLICATION

In order to install the application on the mobile, you have to:

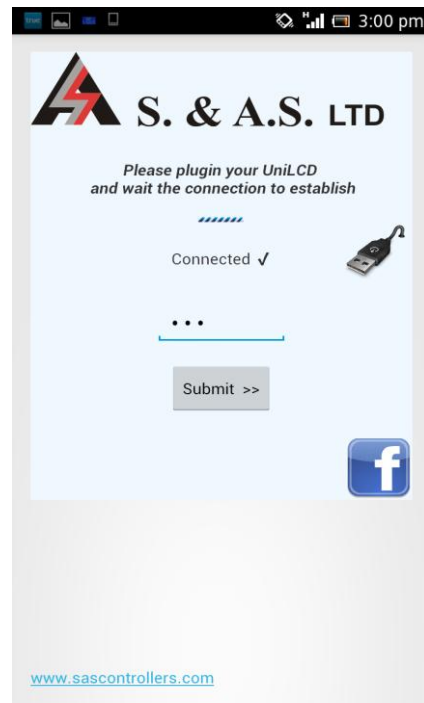
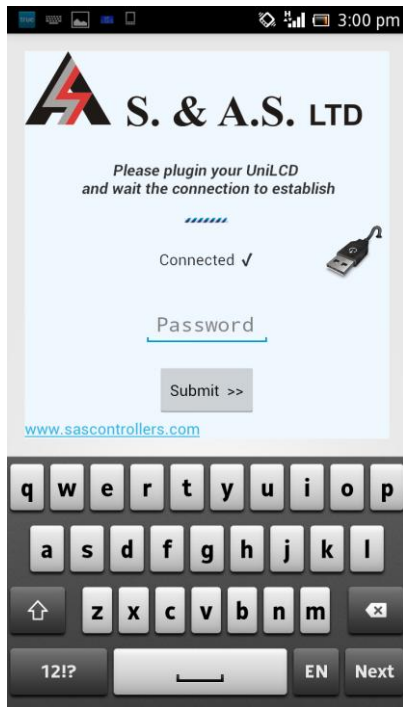
1. Run the "Play store" in your mobile.
2. Search for the "Unilcd" application.
3. Accept the permissions.
4. Install the application.

5.2 RUNNING UNILCD MOBILE APPLICATION

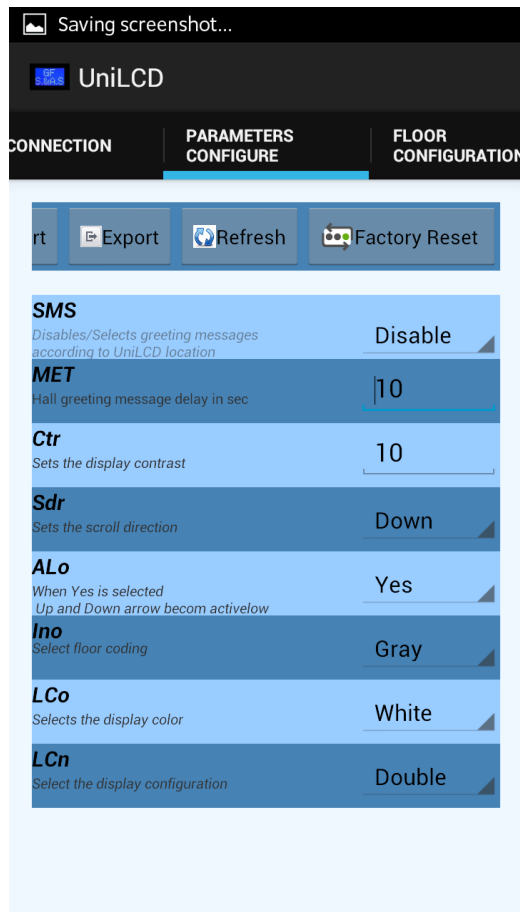
1. Run the UNILCD application.
2. Connect your UniLCD to the mobile and start your settings configuration.
3. A beep signals that your mobile has detected the device.
4. A pop up window appears. When checked, the UniLCD application will be opened whenever a USB device is connected.

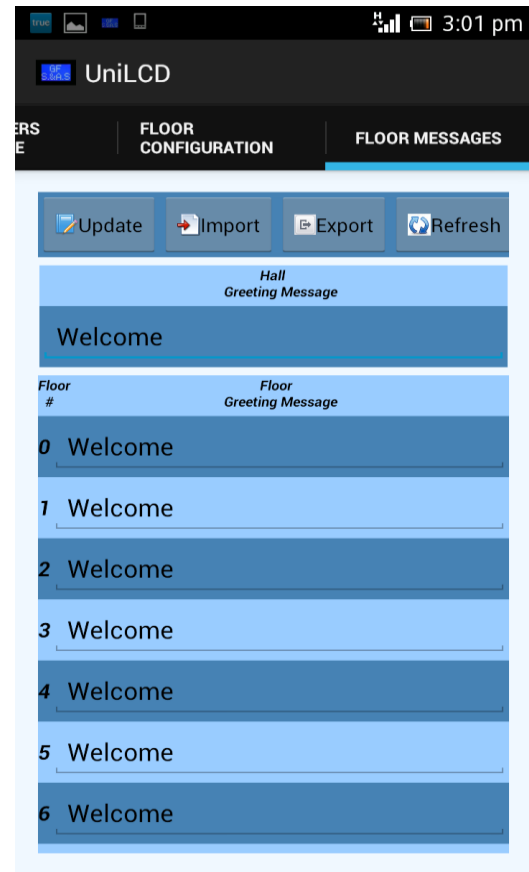


5. Enter the UniLCD password (000).

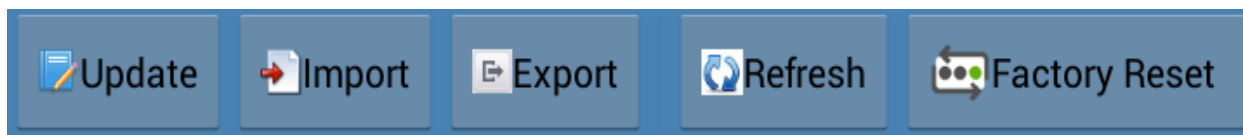


6. Press "Submit" button to enter the parameters menu.
- Several tabs will appear showing all the parameters:





- Control panel buttons :



1. **Update:** To download the displayed parameters on the UniLCD.
2. **Import:** Load parameters from file to display.
3. **Export:** Save the displayed parameters in a file.
4. **Refresh:** Reload parameters from UniLCD.
5. **Factory Reset:** Display the factory settings.

