

Chapter 5: Optical and Photometry Products



Chandrasekhar Venkata Raman
(7 November 1888 - 21 November 1970)

194

Sir C V Raman was an Indian physicist who won the Nobel Prize for physics in 1930. He is famous for the phenomenon of light called Raman Scattering as a result of the “Raman Effect”. The practical application of his award winning discovery is the Raman spectrophotometer and the Raman Microscope. C V Raman has contributed to the optical physics community in the investigation of light and its properties.

Light is an electromagnetic radiation which is visible to the human eye. In terms of wavelength it ranges from 380 nm to 740 nm. Light unlike other radiations has wave-particle duality, which means it has characteristics of both waves and particles. The primary properties of light are intensity, propagation direction, frequency, wavelength and polarization. Light and its unique properties has helped us in making various Optical related instruments like Refractometers, Optical Microscopes and Spectrophotometers. Today's modern physics is all because of light and its properties.

In the following chapter, our SCT optical team has presented various scientific and industrial optical products for all our international customers. All our SCT optical instruments are precisely designed and manufactured using very good optical and light components. For our customers easy selection, we have selected and manufactured a broad range of optical instruments in Refractometry, Microscopy and Spectrophotometry. Except for certain wear & tear, we can guarantee some of our optical products the life time warranty for this quality.

We dedicate this Chapter: 5 to Sir .C.V.Raman and all the optical physicists who has contributed to the light related scientific research.

ScichemTech Optical Team.

ScichemTech - SCT® REFRACTOMETERS

ScichemTech – SCT Refractometers are designed in competence with various international standards, requirements, easy to use, highly reliable and accurate, light weight, made of high quality metals and high standard optics. Our models covers a wide range of measurements and applications. We have released three series of meters. SCT- SILVER, SCT- GOLD & SCT-PLATINUM.

In which you will feel the traditional, modern and sophistication. We have from the basic to advanced meters. We have manufactured all these meters keeping the user's needs in our mind. Where we are different and why you need to use our SCT refractometers. Mainly to get an accurate results and the user friendly meters

SCT POCKET REFRACTOMETERS FOR SALINITY MEASUREMENTS 0 to 10%

SALIENT FEATURES:

- SCT SILVER-01 is a salinity Refractometer used to measure the concentration of salt water and brine water from 0 to 10%.
- The meter gives the direct reading of the specific gravity and the concentration of salt in water in PPT (parts per thousand).
- This meter features with ATC (Automatic Temperature Compensation) during use between 10°C~30°C (50°F~86°F).
- It uses light to measure and read the readings and results.
- One scale checks the NaCl levels with the range of 0-100 ppt (with 1 ppt scale divisions) and the other scale gauges specific gravity with a range of 1.000 to 1.070 (± 0.001 accuracy). Both enables the direct determination of salinity in water that contains dissolved salt and little or no other dissolved solids. It is suitable for a marine salt water tank.
- Made with the highest and finest quality of aluminum & rubber that makes it light weight Cushioned with soft & comfortable non-slip rubber.
- Made precisely to get accurate results, easy calibration and focus.



TECHNICAL SPECIFICATIONS:

PRODUCT NO.	SCT-105.001.01
SCT MODEL NO.	SCT SILVER-01
Measuring Range	Salinity: 0-10%
Refractive Index	1.000-1.070 RI
Minimum Division	Salinity: 0.1%
Refractive Index	0.001 RI
Temperature Compensation Range (ATC)	10°C to 30°C

ORDERING INFORMATION:

SCT-105.001.01	SCT SILVER-01	SCT SILVER-01 REFRACTOMETER SUPPLIED COMPLETE WITH INSTRUCTION MANUAL AND A CASE
----------------	---------------	--

SCT POCKET REFRACTOMETERS WITH MEASUREMENTS (0 to 32%)

SALIENT FEATURES:

- SCT SILVER-02 is a Brix Refractometer to measure the Brix of the solution effectively.
- This meter has a good brix range and widely used to measure the concentration of sugar in various food and beverages.
- The brix range 0 – 32 % Brix with min 0.2% division is suitable for various applications like checking the brix in fruit juices, soft drinks, honey, fruit ripening etc.
- This meter is commonly used for controlling the concentration of various industrial fluids like cutting lubricants and flux rinsing compounds.
- This meter features with ATC (Automatic Temperature Compensation) during use between 10°C~30°C (50°F~86°F) with thereof temperature : 20°C.
- Made with the highest and finest quality of aluminum & rubber that makes it light weight Cushioned with soft & comfortable non-slip rubber.
- Made precisely to get accurate results, Easy calibration and focus.



TECHNICAL SPECIFICATIONS :

PRODUCT NO.	SCT-105.001.02
SCT MODEL NO.	SCT SILVER-02
Measuring Range	0-32% Brix
Minimum Division	0.2% Brix
Temperature Compensation Range (ATC)	10°C to 30°C

ORDERING INFORMATION :

SCT-105.001.02	SCT SILVER-02	SCT SILVER-02 REFRACTOMETER SUPPLIED COMPLETE WITH INSTRUCTION MANUAL AND A CASE
----------------	---------------	--

SCT POCKET REFRACTOMETERS WITH BRIX MEASUREMENTS (28 TO 68%)

SALIENT FEATURES :

- SCT SILVER-03 is a Brix Refractometer to measure the high resolution and range Brix of the solution effectively.
- This meter has a good brix range and widely used to measure the high concentration of sugar in various food and beverage canned products.
- The brix range 28-68% Brix with min 0.2% division is suitable for various applications like checking the brix in the concentrated fruit pulps, canned fruit juices, canned sugar solutions, fruit juices, soft drinks, honey, fruit ripening etc.
- This meter features with ATC (Automatic Temperature Compensation) during use between 10°C~30°C (50°F~86°F) with thereof temperature : 20°C.
- Made with the highest and finest quality of aluminum & rubber that makes it light weight. Cushioned with soft & comfortable non-slip rubber.
- Made precisely to get accurate results, easy calibration and focus.



TECHNICAL SPECIFICATIONS:

PRODUCT NO.	SCT-105.001.03
SCT MODEL NO.	SCT SILVER-03
Measuring Range	28-62% Brix
Minimum Division:	0.2% Brix
Temperature Compensation Range (ATC)	10°C to 30°C

ORDERING INFORMATION:

SCT-105.001.03	SCT SILVER-03	SCT SILVER-03 REFRACTOMETER SUPPLIED COMPLETE WITH INSTRUCTION MANUAL AND A CASE
----------------	---------------	--

196

SCT POCKET REFRACTOMETERS WITH MEASUREMENTS (0 TO 18%)

SALIENT FEATURES:

- SCT SILVER-04 is a Brix Refractometer to measure the low Brix of the solution effectively.
- This meter has a good brix range and widely used to measure the concentration or refractive index of fruit & vegetable juices, sugar in various food and beverages, etc.
- The brix range 0 - 18 % Brix with min 0.1% division is suitable for various applications like checking the brix in synthetic / semi synthetic coolants, grinding coolants, industrial coolants etc.
- This meter is commonly used for controlling the concentration of various industrial fluids like cutting lubricants and flux rinsing compounds.
- This meter features with ATC (Automatic Temperature Compensation) during use between 10°C~30°C (50°F~86°F) with thereof temperature : 20°C.
- Made with the highest and finest quality of aluminum & rubber that makes it light weight Cushioned with soft & comfortable non-slip rubber.
- Made precisely to get accurate results, easy calibration and focus.



TECHNICAL SPECIFICATIONS:

PRODUCT NO.	SCT-105.001.04
SCT MODEL NO.	SCT SILVER-04
Measuring Range	0 - 18% Brix
Minimum Division	0.1% Brix
Temperature Compensation Range (ATC)	10°C to 30°C

ORDERING INFORMATION:

SCT-105.001.04	SCT SILVER-04	SCT SILVER-04 REFRACTOMETER SUPPLIED COMPLETE WITH INSTRUCTION MANUAL AND A CASE
----------------	---------------	--

SCT POCKET CHINICAL REFRACTOMETERS WITH THREE SCALES MEASUREMENT FOR

SALIENT FEATURES:

- SCT SILVER-05 is a Clinical Refractometer to measure Total Serum Protein (SP), the Urine Specific Gravity (SG), and Refractive Index (RI). of the solution effectively.
- This meter has a good range and widely used to measure the Total Serum Protein(SP), the Urine Specific Gravity (SG), and Refractive Index (RI). Clinical and biological fluids, etc.
- A reliable pocket partner for the clinical technicians and physicians for the quick and easy measurements of the critical biological parameters.
- This meter features with ATC (Automatic Temperature Compensation) during use between 10°C~30°C (50°F~86°F) with thereof temperature : 20°C.
- Made with the highest and finest quality of aluminium & rubber that makes it light weight cushioned with soft & comfortable non-slip rubber.
- Made precisely to get accurate results, easy calibration and focus.

TECHNICAL SPECIFICATIONS:

PRODUCT NO.	SCT-105.001.05
SCT MODEL NO.	SCT SILVER-05
MEASURING RANGE:	
SERUM - PROTEIN	0-12g/dl
URINE - SPECIFIC GRSVITY	1.000-1.050 sg
REFRACTIVE INDEX	1.330-1.360 RI
MINIMUM DIVISION:	
SERUM - PROTEIN	0.2 g/dl
URINE - SPECIFIC GRAVITY	0.005 sg
REFRACTIVE INDEX	0.0005 RI
Temperature Compensation Range (ATC)	10°C to 30°C



ORDERING INFORMATION:

SCT-105.001.05	SCT SILVER-05	SCT SILVER-05 REFRACTOMETER SUPPLIED COMPLETE WITH INSTRUCTION MANUAL AND A CASE
----------------	---------------	--

197

SCT POCKET REFRACTOMETERS WITH WIDE RANGE BRIX MEASUREMENTS 0 TO 90%

SALIENT FEATURES:

- SCT SILVER-07 is a Brix Refractometer to measure the wide range Brix of the solution effectively.
- This is a three scale Refractometer, with a wide range of brix scales from 0 to 90% with triple scale.
- The brix ranges 0 – 42 %, 42-71%,and 71 to 90 % Brix with min 0.2% division is suitable for various applications in the industries, like checking the brix in fruit juices, soft drinks, honey, fruit ripening and widely used to measure the concentration of sugar in juices, pulps, canned juices, soft drinks, condensed milk, jams, jellies etc.
- This meter is also commonly used for controlling the concentration of various industrial fluids like cutting lubricants and flux rinsing compounds.
- This meter features with ATC (Automatic Temperature Compensation) during use between 10°C~30°C (50°F~86°F) with thereof temperature : 20°C.
- Made with the highest and finest quality of aluminum & rubber that makes it light weight cushioned with soft & comfortable non-slip rubber.
- Made precisely to get accurate results, easy calibration and focus.

TECHNICAL SPECIFICATIONS:

PRODUCT NO.	SCT-105.001.07
SCT MODEL NO.	SCT SILVER-07
MEASURING RANGE:	
SCALE 1	0 - 42% Brix
SCALE 2	42 - 71% Brix
SCALE 3	71 - 90% Brix
MINIMUM DIVISION:	
SCALE 1	0.2% Brix
SCALE 2	0.2% Brix
SCALE 3	0.2% Brix
TEMPERATURE COMPENSATION RANGE (ATC)	10°C to 30°C



ORDERING INFORMATION:

SCT-105.001.07	SCT SILVER	SCT SILVER-07 REFRACTOMETER SUPPLIED COMPLETE WITH INSTRUCTION MANUAL AND CARRYING CASE
----------------	------------	---

SCT PORTABLE DIGITAL SALINITY REFRACTOMETERS (0 TO 28%)

SALIENT FEATURES :

- SCT-GOLD - 16 is a compact, portable ergonomically designed Digital Refractometer.
- This meter is a digital salinity meter to have a direct reading in a clear large LED display
- Measurement Ranges are wide (0 to 28% salinity) and (0.1%) accuracy.
- It has good range of working temperature from 0°C - 40°C (32°F - 104°F)
- This meter features with ATC (Automatic Temperature Compensation) during use between 10°C~30°C (50°F~86°F) with thereof temperature : 20°C
- It has automatic shut off facility in 3 minutes
- High accuracy and the precision make user's to get the results highly reliable
- Shifting between Centigrade (°C) and Fahrenheit (°F)
- Light weight (just 160 gms only), easy to carry and supplied with a suitable case.
- Battery operated with low voltage and power alarms and supplied with long shelf life batteries (2x1.5v).

TECHNICAL SPECIFICATIONS:

PRODUCT NO.	SCT-105.001.16
SCT MODEL NO.	SCT GOLD-16
SCALES	SALINITY, REFRACTIVE INDEX
RANGE:	
SALINITY	0-28%
REFRACTIVE INDEX	1.3330-1.3900 RI
DIVISIONS:	
SALINITY	0.1%
REFRACTIVE INDEX	0.0001 RI
ACCURACY:	
SALINITY	±0.1%
REFRACTIVE INDEX	±0.0003 RI
ORIGINAL:	
SALINITY	0.1%
REFRACTIVE INDEX	1.3330 RI
TEMPERATURE MEASUREMENT RANGE	0°C-40°C (32°F - 104°F)
PRECISION OF MEASUREMENT TEMP.	±0.1°C (2°F)
MEASUREMENT TEMP. RESOLUTION	0.1°C (2°F)
STORAGE TEMPERATURE	-10°C - 50°C (14°F - 122°F)
DIMENSION	120x59x40 mm
WEIGHT	160g
POWER SUPPLY	2 BATTERY (1.5V)
OPERATING TIME	MORE THAN 1500 TIMES PER BATTERY



ORDERING INFORMATION:

SCT-105.001.16	SCT GOLD-16	SCT GOLD-16 HANDHELD DIGITAL SALINITY REFRACTOMETER SUPPLIED COMPLETE WITH INSTRUCTION MANUAL AND CARRYING CASE
----------------	-------------	---

SCT PORTABLE DIGITAL BRIX REFRACTOMETERS (0 TO 50%)

SALIENT FEATURES:

- SCT-GOLD 17 is a compact, portable ergonomically designed Digital Refractometer.
- This meter is a digital brix/refractive index meter to have a direct reading in a clear large LED display
- Measurement Ranges are wide (0 to 50% brix)/(0.1%) and (1.3330 to 1.3900 RI) / (0.0001) accurate.
- The meter needs 300 to 500 microliters sample only.
- It has good range of working temperature from 0°C - 40°C (32°F - 104°F)
- This meter features with ATC (Automatic Temperature Compensation) during use between 10°C~30°C (50°F~86°F) with thereof temperature : 20°C
- It has automatic shut off facility in 3 minutes
- High accuracy and the precision make user's to get the results highly reliable
- Shifting between Centigrade (°C) and Fahrenheit (°F)
- Light weight (just 160 gms only), easy to carry and supplied with a suitable case.
- Battery operated with low voltage & power alarms and supplied with long shelf life batteries (2x1.5v).

TECHNICAL SPECIFICATIONS:

PRODUCT NO.	SCT-105.001.17
SCT MODEL NO.	SCT GOLD-17
SCALES	BRIX, REFRACTIVE INDEX
RANGE	
BRIX	0-50%
REFRACTIVE INDEX	1.3330-1.3900 RI
DIVISIONS	
BRIX	0.1%
REFRACTIVE INDEX	0.0001



ACCURACY	
BRIX	±0.1%
REFRACTIVE INDEX	±0.0003 RI
ORIGINAL	
BRIX	0%
REFRACTIVE INDEX	1.3330 RI
TEMPERATURE MEASUREMENT RANGE	0°C - 40°C (32°F - 104°F)
PRECISION OF MEASUREMENT TEMP	±0.1°C (2°F)
MEASUREMENT TEMP. RESOLUTION	0.1°C (2°F)
STORAGE TEMPERATURE	-10°C - 50°C (14°F - 122°F)
DIMENSION	120x59x40MM
WEIGHT	160G
POWER SUPPLY	2BATTERY (1.5V)
OPERATING TIME	MORE THAN 1500 TIMES PER BATTERY

ORDERING INFORMATIONS:

SCT-105.001.17	SCT GOLD-17	SCT GOLD-17 HANDHELD DIGITAL BRIX REFRACTOMETER SUPPLIED COMPLETE WITH INSTRUCTION MANUAL AND CARRYING CASE
----------------	-------------	---

SCT PORTABLE DIGITAL BRIX REFRACTOMETERS (30 TO 70%)

SALINET FEATURES:

- SCT-GOLD 18 is a compact, portable ergonomically designed Digital Refractometer.
- This meter is a digital brix / refractive index meter to have a direct reading in a clear large display.
- Measurement Ranges are wide (30 to 70% brix) / (0.1%) and (1.3330 to 1.3900 RI) / (0.0001) accurate.
- The meter needs 300 to 500 microliters sample only.
- It has good range of working temperature from 0°C - 40°C (32°F - 104°F)
- This meter features with ATC (Automatic Temperature Compensation) during use between 10°C~30°C (50°F~86°F) with thereof temperature : 20°C
- It has automatic shut off facility in 3 minutes
- High accuracy and the precision make user's to get the results highly reliable
- Shifting between Centigrade (°C) and Fahrenheit (°F)
- Light weight (just 160 gms only), easy to carry and supplied with a suitable case.
- Battery operated with low voltage and power alarms and supplied with long shelf life batteries (2x1.5 v).

TECHNICAL SPECIFICATIONS:

PRODUCT NO.	SCT-105.001.18
SCT MODEL NO.	SCT GOLD-18
SCALES	BRIX, REFRACTIVE INDEX
RANGE	
BRIX	30- 70 %
REFRACTIVE INDEX	1.3330-1.3900 RI
DIVISIONS	
BRIX	0.1%
REFRACTIVE INDEX	0.0001 RI
ACCURACY	
BRIX	±0.1%
REFRACTIVE INDEX	±0.0003 RI
ORIGINAL	
BRIX	0%
REFRACTIVE INDEX	1.3330 RI
TEMPERATURE MEASUREMENT RANGE	0°C - 40°C (32°F - 104°F)
PRECISION OF MEASUREMENT TEMPERATURE	±0.1°C (2°F)
MEASUREMENT TEMPERATURE RESOLUTION	0.1°C (2°F)
STORAGE TEMPERATURE	-10°C - 50°C (14°F - 122°F)
DIMENSION	120x59x40MM
WEIGHT	160G
POWER SUPPLY	2 BATTERY (1.5V)
OPERATING TIME	MORE THAN 1500 TIMES PER BATTERY



ORDERING INFORMATIONS:

SCT-105.001.18	SCT GOLD-18	SCT GOLD-18 HANDHELD DIGITAL BRIX REFRACTOMETER SUPPLIED COMPLETE WITH INSTRUCTION MANUAL AND CARRYING CASE
----------------	-------------	---

SCT PORTABLE DIGITAL CLINICAL REFRACTOMETER

SALINET FEATURES :

- SCT-GOLD-19 is a compact, portable ergonomically designed Digital Clinical Refractometer to measure Total Serum Protein (SP), the Urine Specific Gravity (SG), and Refractive Index (RI). of the solution effectively.
- This meter is a Clinical Refractometer to have a direct reading in a clear large LED display
- This meter has a good range and widely used to measure the Total Serum Protein(SP), the Urine Specific Gravity (SG), and Refractive Index (RI). Clinical and biological fluids. etc.
- It has a wide measuring range SP (0 to 12) / (0.1),USG (1.000-1.050) / 0.001 and (1.3330 to 1.3900 RI) / (0.0001) accurate.
- A reliable pocket partner for the clinical technicians and physicians for the quick and easy measurements of the critical biological parameters.
- It has good range of working temperature from 0°C - 40°C (32°F- 104°F)
- This meter features with ATC (Automatic Temperature Compensation) during use between 10°C~30°C (50°F~86°F) with thereof temperature : 20°C
- It has automatic shut off facility in 3 minutes
- High accuracy and the precision make user's to get the results highly reliable
- Shifting between Centigrade (°C) and Fahrenheit (°F)
- Light weight (just 160 gms only), easy to carry and supplied with a suitable case.
- Battery operated with low voltage & power alarms and supplied with long shelf life batteries (2x1.5v).

TECHNICAL SPECIFICATIONS:

PRODUCT NO.	SCT-105.001.19
SCT MODEL NO.	SCT GOLD-19
SCALES	URINE SP. GRAVITY, SERUM PROTEIN AND RI
RANGE:	
URINE SP.G	1.000-1.050 SG
SERUM	0-12%
RI	1.3330-1.3900 RI
DIVISIONS:	
URINE SP.G	0.001 SG
SERUM	0.1%
RI	0.0001 RI
ACCURACY:	
URINE SP.G	±0.001
SERUM	±0.1
RI	±0.0001 RI
ORIGINAL:	
URINE SP.G	1.000
SERUM	-0.9
RI	1.000 RI
TEMPERATURE MEASUREMENT RANGE	0°C - 40°C (32°F - 104°F)
PRECISION OF MEASUREMENT TEMPERATURE	±0.1°C (2°F)
MEASUREMENT TEMPERATURE RESOLUTION	0.1°C (2°F)
STORAGE TEMPERATURE	-10°C - 50°C (14°F - 122°F)
DIMENSION	120x59x40MM
WEIGHT	160G
POWER SUPPLY	2BATTERY (1.5V)
OPERATING TIME	MORE THAN 1500 TIMES PER BATTERY



ORDERING INFORMATION:

SCT-105.001.19	SCT GOLD-19	SCT GOLD-19 HANDHELD DIGITAL BRIX REFRACTOMETER SUPPLIED COMPLETE WITH INSTRUCTION MANUAL AND CARRYING CASE
----------------	-------------	---

SCT PORTABLE DIGITAL REFRACTOMETER

Our SCT Digital Portable instrument has been designed by our R&D team to make many of our world customers with a new generation compact portable refractometers, we have added this new range with our GOLD series.

SALIENT FEATURES :

- SCT-GOLD-New series is a compact, portable ergonomically designed Digital portable
- Refractometer to measure many of the refractive parameters of the solution effectively.
- Easy to read LCD with backlight
- SCT-GOLD-New series is Light weight, compact & can be kept in the hand..
- SCT-GOLD-New series has Easy-Operation & anyone can use .
- SCT-GOLD-New series has High-performance with precise results
- SCT-GOLD-New series has temperature Measurement Range: 0°C-40°C (32°F - 104°F)
- SCT-GOLD-New series has Precision of Measurement Temperature:±1°C (2°F)
- SCT-GOLD-New series has Measurement Temperature Resolution: 1°C (1°F)



- SCT-GOLD-New series has Operation Temperature: 0°C –40°C(32°F-90°F)
- SCT-GOLD-New series has Storage Temperature: 0°C –50°C(32°F-122°F)
- SCT-GOLD-New series has Operating Time: More than 10000 times per Battery
- SCT-GOLD-New series has Automatic Temperature Compensation
- SCT-GOLD-New series has Automatic Shut Off & Low voltage alarm.
- SCT-GOLD-New series has Conversion between Centigrade and Fahrenheit Degree
- SCT-GOLD-New series has Wide measuring range, with water proof.
- SCT-GOLD-New series has High resolution(0.1Brix%) & has temperature Compensation Function
- Battery operated with low voltage & power alarms and supplied with long shelf life batteries (2x1.5v)
Power Supply: 2xAAA(1.5V)
- Dimension:135×65×40mm & Weight:200g
- Conforms to CE safety standard.
- Manufactured under ISO 9001 : 2008 Quality Standards.

TECHNICAL SPECIFICATIONS:

Please refer the table for specific details & measuring range.

SCT PRODUCT NO	SCT MODEL NO	SCALES	RANGE	DIVISIONS	ACCURACY
SCT-105.001.20	SCT-GOLD-20	BRIX REFRACTIVE INDEX	0~45% 1.3330~1.4098	0.1 0.0001	±0.2 ±0.0003
SCT-105.001.21	SCT-GOLD-21	BRIX REFRACTIVE INDEX	0~95% 1.3330~1.5400	0.1 0.0001	±0.5 0.0003
SCT-105.001.22	SCT-GOLD-22	BRIX BAUME WATER REFRACTIVE INDEX	58~92% 38~43 17~27 1.4370~1.5233	0.1 0.1 0.1 0.0001	±0.2 ±0.1 ±0.1 ±0.0003
SCT-105.001.23	SCT-GOLD-23	BRIX SALINITY REFRACTIVE INDEX	0~35% 0~28% 1.3330~1.3900	0.1 0.1 0.0001	±0.2 ±0.2 ±0.0003
SCT-105.001.24	SCT-GOLD-24	URINE SP.G. SERUM P. REFRACTIVE INDEX	1.000~1.050 0~12g/dl 1.3330~1.3900	0.001 0.1 0.0001	±0.001 ±0.1 ±0.0003
SCT-105.001.25	SCT-GOLD-25	ALCOHOL	0~60%w/w	0.1	±0.3

ORDERING INFORMATIONS:

PRODUCT NO	MODEL NO	DESCRIPTION
SCT-105.001.20	SCT-GOLD.20	SCT-GOLD-20 Digital portable Refractometer (Brix, Refractive Index) is supplied completely in a case with manual.
SCT-105.001.21	SCT-GOLD.21	SCT-GOLD-21 Digital portable Refractometer (Brix, Refractive Index) is supplied completely in a case with manual.
SCT-105.001.22	SCT-GOLD.22	SCT-GOLD-22 Digital portable Refractometer (Brix, Baume, Water, Refractive Index) is supplied completely in a case with manual.
SCT-105.001.23	SCT-GOLD.23	SCT-GOLD-23 Digital portable Refractometer (Brix, Salinity, Refractive Index) is supplied completely in a case with manual.
SCT-105.001.24	SCT-GOLD.24	SCT-GOLD-24 Digital portable Refractometer (Urine, Serum, Refractive Index) is supplied completely in a case with manual.
SCT-105.001.25	SCT-GOLD.25	SCT-GOLD-25 Digital portable Refractometer (Alcohol) is supplied completely in a case with manual.

201

SCT TABLE TOP DIGITAL REFRACTOMETER (0 TO 95%) BRIX

SALIENT FEATURES:

- SCT-PLATINUM-31 is a microprocessor controlled, bench top elegantly designed Digital Refractometer.
- This meter is a digital brix / refractive index meter to have a direct reading in a clear large LED display
- Measurement Ranges are wide (0 to 95% brix) / (0.1%) and (1.3330 to 1.5318 RI) / (0.0001) accurate.
- It has RS 232 interface to the external Lap top / computer, data can be stored and analysed.
- Stainless steel prism plate
- This meter is a water proof and suitable for Quality control and RD purposes.
- The meter needs 300 to 500 microliters sample only.
- It has good range of working temperature from 10°C - 40°C - 32°F - 104°F
- This meter features with ATC (Automatic Temperature Compensation) during use between 10°C~30°C (50°F~86°F) with thereof temperature : 20°C
- It has automatic shut off facility in 3 minutes
- High accuracy and the precision make user's to get the results highly reliable
- Shifting between Centigrade (°C) and Fahrenheit (°F)
- Light weight (just 160 gms only), easy to carry and supplied with a suitable case.
- Battery operated with low voltage and power alarms and supplied with long shelf life battery (9 V).



TECHNICAL SPECIFICATIONS:

PRODUCT NO.	SCT-105.001.31
SCT MODEL NO.	SCT PLATINUM - 31
SCALES	BRIX, REFRACTIVE INDEX
RANGE	
BRIX	0.0--95.0%
REFRACTIVE INDEX	1.3330--1.5318 RI
TEMPERATURE	0-40°C, 32-104°F
RESOLUTION	
BRIX	0.1
REFRACTIVE INDEX	0.0001 RI
TEMPERATURE	0.1°C, 0.1°F
ACCURACY	
BRIX	±0.1%
REFRACTIVE INDEX	±0.0002 RI
TEMPERATURE	±1°C, ±2°F
WORK TEMPERATURE:	10-40°C
STORAGE TEMPERATURE	0-50°C
PRISM PLATE	STAINLESS STEEL
SEAL	WATER PROOF DESIGN
BATTERY CABIN	WATER PROOF DESIGN
POWER SUPPLY	DRY BATTERY: 9V BATTERY, AT LEAST 3000 MEASURE TIMES PER BATTERY
AC ADAPTOR	9 VDC POWER ADAPTOR
LIGHT SOURCE	RED LED
SCALE (DEFAULT)	BRIX
TEMPERATURE UNIT	CENTIGRADE & FAHRENHEIT
TEMPERATURE COMPENSATION RANGE	5-40°C
COMPUTER OUTLET	RS232 SERIAL PORT

ORDERING INFORMATION:

SCT-105.001.31	SCT PLATINUM-31	SCT PLATINUM-31 TABLE TOP DIGITAL REFRACTOMETER SUPPLIED COMPLETE WITH INSTRUCTION MANUAL AND CARRYING CASE
----------------	-----------------	---

SCT ABBE REFRACTOMETERS

SALIENT FEATURES:

- SCT-PLATINUM 32 - Refractometer is a Abbe type, direct easy reading bench top Refractometer.
- It is designed to measure the refractive index (nD) and the average optical dispersion (NF-NC) of the transparent, semi transparent and the solid matter.
- It also used to measure the brix percentage of the sugar solutions
- It is manufactured from high quality metal & good quality prisms.
- Samples like paste type and solids can be measured using Abbe Refractometers.
- It has a wide applications in the Oil, Ghee, Pharmaceutical, Chemistry, Sugar industries and Geological Departments and the research departments, Universities.

TECHNICAL SPECIFICATIONS:

PRODUCT NO.	SCT-105.001.32
SCT MODEL NO.	SCT PLATINUM-32
RANGE	
BRIX	0~95% Brix
REFRACTIVE INDEX	1.300~1.700 nD
MIN. DIV.	
BRIX	0.25% Brix
REFRACTIVE INDEX	0.0002 nD
DIMENSION	200mmx100mmx240mm
WEIGHT	3 KG

ORDERING INFORMATION:

SCT-105.001.32	SCT PLATINUM-32	SCT PLATINUM-32 ABBE REFRACTOMETER SUPPLIED COMPLETE WITH 1 BOTTLE OF NAPHTHALENE BROMIDE, 1 CALIBRATION STANDARD, 1 SCREW DRIVER AND DUSTCOVER, INSTRUCTION MANUAL AND CARRYING CASE
----------------	-----------------	---



SCT ADVANCED ABBE REFRACTOMETERS

SALIENT FEATURES :

- SCT-PLATINUM 33 – Refractometer is a Abbe type, direct easy reading bench top Refractometer.
- It is designed to measure the refractive index (nD) and the average optical dispersion (NF-NC) of the transparent, semi-transparent and the solid matter.
- SCT-PLATINUM-33 has a wide range 0-95% sugar content and 1.300 to 1.700 refractive index measurements.
- It also used to measure the brix percentage of the sugar solutions
- Highly précised and accurate, good for research purposes
- Measurements displayed on light emitted screen
- It is manufactured from high quality metal & good quality prisms.
- Samples like paste type and solids can be measured using Abbe Refractometers.
- It has a wide applications in the Oil, Ghee, Pharmaceutical, Chemistry, Sugar industries and Geological Departments and the research departments, Universities.



TECHNICAL SPECIFICATIONS:

PRODUCT NO.	SCT-105.001.33
SCT MODEL NO.	SCT PLATINUM-33
RANGE	
SUGAR CONTENT	0-95%
REFRACTIVE INDEX	1.300-1.700 RI
Min. Div.:	
SUGAR CONTENT	0.25%
REFRACTIVE INDEX	0.0005 RI
MAGNIFICATION OF TELESCOPE	2X
MAGNIFICATION OF READING MICROSCOPE	22X
WEIGHT	6KG

ORDERING INFORMATION:

SCT-105.001.33	SCT PLATINUM-33	SCT PLATINUM-33 ABBE REFRACTOMETER SUPPLIED COMPLETE WITH SPECIAL THERMOMETER (WITH SHIELD COVER), STANDARD GLASS TEST PIECE (WITH A BOX). SQUARE HOLE SPANNER FOR ADJUSTING. NAPHTHALENE BROMIDE. INSTRUCTION MANUAL AND CARRYING CASE
----------------	-----------------	---

203

ABBE DIGITAL REFRACTOMETERS

SALIENT FEATURES :

- SCT-PLATINUM 34 – Digital Abbe Refractometer is a Bench top, direct easy reading Refractometer.
- It is designed to measure the refractive index (nD) and the average optical dispersion (NF-NC) of the transparent, liquid and the solid matter.
- SCT-PLATINUM 34 – Digital Abbe Refractometer has Measurement of the Brix of sugar solution.
- SCT-PLATINUM 34 – Digital Abbe Refractometer has Visual reading and LCD display
- SCT-PLATINUM 34 – Digital Abbe Refractometer has Automatic correction of the effect of temperature on the Brix.
- SCT-PLATINUM 34 – Digital Abbe Refractometer has Prism made of hard glass, and it is not easy to break.
- SCT-PLATINUM 34 – Digital abbe Refractometer has Printer RS 232 interface for direct data print-out.
- Conforms to CE safety standard.
- Manufactured under ISO 9001 : 2008 Quality Standards.



TECHNICAL SPECIFICATIONS:

PRODUCT NO	SCT-105.001.34
MODEL NO	SCT-PLATINUM -34
MEASUREMENT RANGE: REFRACTIVE INDEX ND	1.3000-1.7000
B MEASUREMENT RANGE: BRIX	0-95%
ACCURACY: REFRACTIVE INDEX ND	±0.0002
ACCURACY: BRIX	±0.1%
TEMPERATURE RANGE (MIN. 0.1°C)	0-50°C
WEIGHT (NET)	10KG
OVERALL DIMENSIONS	330MMx180MMx380MM

ORDERING INFORMATION:

SCT PRODUCT NO.	SCT MODEL NO.	DESCRIPTION
SCT-105.001.34	SCT-GOLD -34	SCT GOLD -34 ABBE Digital Refractometer supplied complete with Instruction manual.

SCT HIMAL-1 : VISUAL / SEMI AUTOMATIC MELTING POINT APPARATUS

SALIENT FEATURES:

- SCT-HIMAL-1 DIGITAL SEMI-AUTOMATIC MELTING POINT APPARATUS is made with simple design, high precision and superior quality.
- SCT-HIMAL-1 DIGITAL SEMI-AUTOMATIC MELTING POINT APPARATUS has Visual & Semi automatic Display readings.
- SCT-HIMAL-1 DIGITAL SEMI-AUTOMATIC MELTING POINT APPARATUS has the Temperature range from 40-280° C .
- SCT-HIMAL-1 DIGITAL SEMI-AUTOMATIC MELTING POINT APPARATUS is suitable for educational Labs & basic research Labs.
- SCT-HIMAL-1 DIGITAL SEMI-AUTOMATIC MELTING POINT APPARATUS has a good key-pad operations, which is user friendly.
- Conforms to CE safety standards.
- Manufactured under ISO 9001 : 2008 Quality Standards.

TECHNICAL SPECIFICATIONS:

PRODUCT NO.	SCT-105.001.35
MODEL NO.	SCT-HIMAL-1
MELTING-POINT MEASUREMENT RANGE	40-280° C
MINIMUM DIGITAL DISPLAY	0.1° C
LINEAR HEATING-UP RATE	0.5,1.0,1.5,3.0° C/MIN
ACCURACY	< 200° C : ±0.5°C;200~280° C: ±0.8°C
REPEATABILITY (STANDARD DEVIATION S):	0.3°C
WEIGHT (NET)	12.5 KG
OVERALL DIMENSIONS	270MM×310MM×400MM



ORDERING INFORMATION:

SCT PRODUCT NO.	SCT MODEL NO.	DESCRIPTION
SCT-105.001.35	SCT-HIMAL-1	SCT-HIMAL-1 Visual Melting Point Apparatus supplied complete with Instruction manual.

204

SCT MICRO PROCESSOR & AUTOMATIC MELTING-POINT APPARATUS

SALIENT FEATURES:

- SCT-HIMAL-2 DIGITAL MELTING POINT APPARATUS is made with attractive design, high precision and superior quality.
- SCT-HIMAL-2 DIGITAL MELTING POINT APPARATUS has digital readout and Fully automatic operations.
- SCT-HIMAL-2 DIGITAL MELTING POINT APPARATUS has LCD display, entry by digital keyboard and direct display of melting curve.
- SCT-HIMAL-2 DIGITAL MELTING POINT APPARATUS has the ability to measure three samples at the same time and calculating average value of initial and final melting points automatically.
- SCT-HIMAL-2 DIGITAL MELTING POINT APPARATUS has the ability to findout the purity of the samples...it is recommended for QC and R&D labs .
- SCT-HIMAL-2 has RS-232 interface for printer.
- Conforms to CE safety standards.
- Manufactured under ISO 9001 : 2008 Quality Standards.

TECHNICAL SPECIFICATIONS:

PRODUCT NO	SCT-105.001.36
MODEL NO	SCT-HIMAL-2
Operation	Automatic
Melting-point measurement range	Ambient to 300° C
Minimum digital display	0.1° C
Linear heating-up rate	0.2 - 5.0° C/min
Accuracy	< 200° C : ±0.5°C;200-300° C: ±0.8°C
Weight	11kg
Overall dimensions	398mm x280mmx170mm



ORDERING INFORMATION:

SCT PRODUCT NO	SCT MODEL NO	DESCRIPTION
SCT-105.001.36	SCT-HIMAL-36	SCT HIMAL-36 Micro Processor Melting-point Apparatus supplied complete with Instruction manual.

SCT-HIMAL : DIGITAL MELTING POINT APPARATUS

SALIENT FEATURES:

- SCT-HIMAL-3 Digital Melting Point Apparatus are made with attractive design, high precision and superior quality.
- SCT-HIMAL-3 Digital Melting Point Apparatus are made with attractive design , high precision and superior quality.
- SCT-HIMAL-3 has fully automatic measurement.
- SCT-HIMAL-3 has digital temperature control via LCD-display in 0.1°C steps.
- SCT-HIMAL-3 has sealed keyboard for easy cleaning.
- SCT-HIMAL-3 has alarm function when reaching the melting point.
- SCT-HIMAL-3 has digital display of all important data.
- SCT-HIMAL-3 has automatic quick cooling by integrated fan.
- SCT-HIMAL-3 has standard protective cover and 100 melting point tubes.
- SCT-HIMAL-3 has RS-232 interface for printer.
- Conforms to CE safety standards.
- Manufactured under ISO 9001 : 2008 Quality Standards.

TECHNICAL SPECIFICATIONS:

PRODUCT NO.	SCT-105.001.37
MODEL NO.	SCT-HIMAL-3
Melting point range	± Ambient °C- 400°C
Initial Temperature setting	≤7min from ambient temperature to 400°C
	≤7.5min. from 400°C to ambient temperature
Resolution	0.1°C
Temperature accuracy	±0.4°C (<200°C), 0.7°C (300°C)
Linearity °C	0.1°C/min, 0.2°C/min, 0.5°C/min, 1°C/min, 2°C/min, 3°C/min, 4°C/min or 5°C/min
Standard capillary size [mm]	Inside dia. 1.0mm, outside dia. 1.4mm
Safety Class	IP20
Power supply [VAC/Hz]	220 - 240V / 50/60 Hz
Power [W]	100W



205

ORDERING INFORMATION:

PRODUCT NO.	MODEL NO.	DESCRIPTION
SCT-106.001.37	SCT-HIMAL-3	SCT HIMAL-3 Digital Melting Point Apparatus is supplied complete with capillary tubes, capillary tube grinder, cover and instruction manual.

SCT NICOL-1 MANUAL DISC POLARIMETERS

SALIENT FEATURES:

- SCT NICOL-1 MANUAL DISC POLARIMETER is made with simple design, with high precision and superior quality.
- SCT NICOL-1 MANUAL DISC POLARIMETER is a manual instrument, has a measuring range of -180°~+180°
- SCT NICOL-1 MANUAL DISC POLARIMETER manual reading through calculation.
- SCT NICOL-1 MANUAL DISC POLARIMETER determines the degree of physical rotation instrument. Through the determination of optical rotation of the sample, determine the sample concentration, purity, sugar content, or content.
- SCT NICOL-1 MANUAL DISC POLARIMETER widely used in the basic studies, manual determination.
- SCT NICOL-1 MANUAL DISC POLARIMETER is widely used in sugar refining, pharmaceuticals, drug test, food, spices, monosodium glutamate, as well as chemical, oil and other industrial production, scientific research and teaching departments for technology analysis or quality control inspection process.
- Conforms to CE safety standards.
- Manufactured under ISO 9001 : 2008 Quality Standards.



TECHNICAL SPECIFICATIONS:

PRODUCT NO	SCT-105.001.40
MODEL NO	SCT-NICOL-1
MEASUREMENT RANGE	-180°~+180°
MINIMUM READING	0.05°
ACCURACY	±0.05°
SENSITIVITY	0.05°
WEIGHT (NET):	7.6 KG
OVERALL DIMENSIONS	510MMx135MMx250MM

ORDERING INFORMATION:

SCT-105.001.40	SCT-NICOL-1	SCT-NICOL-1 Manual Disc Polarimeter supplied complete with Instruction manual.
----------------	-------------	--

SCT-NICOL-2 SEMI-AUTOMATIC DIGITAL POLARIMETERS

SALIENT FEATURES:

- SCT-NICOL-2 Semi-Automatic Digital Polarimeter is made with attractive design, with high precision and superior quality.
- SCT-NICOL-2 Semi-Automatic Digital Polarimeter has automatic photoelectric inspection technology and WINDOWS HMI system, boasts accurate and reliable measurement, convenient operation and so on.
- SCT-NICOL-2 Semi-Automatic Digital Polarimeter has the Digital clear readout & display
- SCT-NICOL-2 Semi-Automatic Digital Polarimeter has the ability to detect the optical rotation, the density, content and purity of substances etc. can be analyzed and determined. It's widely used in medicine, petroleum, food, chemicals, flavors, spices, sugar marking, other industries and universities and research institutes.
- SCT-NICOL-2 Semi-Automatic Digital Polarimeter has large color touch screen display and innovative WINDOWS software interface give extremely convenient device operation and data acquisition.
- SCT-NICOL-2 Semi-Automatic Digital Polarimeter has High brightness LED lights with service life exceeding 100000 hours.
- SCT-NICOL-2 Semi-Automatic Digital Polarimeter has USB & RS-232 data out put.
- SCT-NICOL-2 Semi-Automatic Digital Polarimeter has A variety of measurement modes are optional, without using complicated manual calculation. Extremely large storage capacity can store up to 1000 groups of data information semi-automatically.
- Conforms to CE safety standards.
- Manufactured under ISO 9001 : 2008 Quality Standards.



TECHNICAL SPECIFICATIONS:

SCT-PRODUCT NO	SCT-105.001.41
SCT-MODEL	SCT-NICOL-2
MEASURING RANGE	±89.99°ARC ±259°Z
MIN. READING	0.001°(OPTICAL ROTATION)
ACCURACY	±0.01° (-45°≤ OPTICAL ROTATION ≤ +45°) ±0.02° (OPTICAL ROTATION<-45° OR OPTICAL ROTATION>+45°)
REPEATABILITY (STANDARD DEVIATION S)	0.002°(OPTICAL ROTATION)
MEASURABLE SAMPLE MIN. TRANSMITTANCE	1%
SAMPLE CHAMBER	ACCEPTS SAMPLE TUBES UP TO 200MM
WORKING WAVELENGTH	589.3NM (SODIUM D SPECTRUM)
INTERFACE	USB AND RS232
DATA STORAGE CAPACITY	1000 PIECES
DISPLAY MODE	5.6" TFT TOUCH SCREEN
POWER SUPPLY	220VAC±10% 50HZ
POWER	250W
NET WEIGHT	24KG
DIMENSION	708MMX330MMX287MM

ORDERING INFORMATION:

PRODUCT NO	MODEL NO	DESCRIPTION
SCT-105.001.41	SCT-NICOL-2	SCT-NICOL-2 Semi-Automatic Digital Polarimeter Is supplied complete with Instruction manual.

SCT-NICOL-3 FULLY AUTOMATIC DIGITAL POLARIMETERS

SALIENT FEATURES:

- SCT-NICOL-3 Fully Automatic Digital Polarimeter is made with attractive, Elegant design, with high precision and superior quality.
- SCT-NICOL-3 Fully Automatic Digital Polarimeter has built-in Peltier precise temperature control system.
- SCT-NICOL-3 Fully Automatic Digital Polarimeter has automatic photoelectric inspection technology and WINDOWS HMI system, boasts accurate and reliable measurement, convenient operation and so on.
- SCT-NICOL-3 Fully Automatic Digital Polarimeter has the ability to detect the optical rotation, the density, content and purity of substances etc. can be analyzed and determined. It's widely used in medicine, petroleum, food, chemicals, flavors, spices, sugar marking, other industries and universities and research institutes.
- SCT-NICOL-3 Fully Automatic Digital Polarimeter has the Digital clear readout & display
- SCT-NICOL-3 Fully Automatic Digital Polarimeter has Large color touch screen display and innovative WINDOWS software interface give extremely convenient device operation and data acquisition.
- SCT-NICOL-3 Fully Automatic Digital Polarimeter has High brightness LED lights with service life exceeding 100000 hours.
- SCT-NICOL-3 Fully Automatic Digital Polarimeter has USB & RS-232 data out put.
- SCT-NICOL-3 Fully Automatic Digital Polarimeter includes Series Polarimeter with By detecting
- Characteristics:
- SCT-NICOL-3 Fully Automatic Digital Polarimeter has Automatic photoelectric inspection technique Large color touch screen display and innovative WINDOWS software interface give extremely convenient device operation and data acquisition.
- Conforms to CE safety standards.
- Manufactured under ISO 9001 : 2008 Quality Standards.



TECHNICAL SPECIFICATIONS:

SCT-PRODUCT NO	SCT-105.001.42
SCT-MODEL	SCT-NICOL-3
MEASURING RANGE	±89.99°ARC
	±259°Z
MIN.READING	0.001°(OPTICAL ROTATION)
ACCURACY	±0.01° (-45°≤ OPTICAL ROTATION ≤ +45°) ±0.02° (OPTICAL ROTATION<-45° OR OPTICAL ROTATION>+45°)
REPEATABILITY (STANDARD DEVIATION S)	0.002°(OPTICAL ROTATION)
MEASURABLE SAMPLE MIN. TRANSMITTANCE	1%
WORKING WAVELENGTH	589.3NM (SODIUM D SPECTRUM)
TEMPERATURE CONTROL MODE	BUILT-IN SEMICONDUCTOR
TEMPERATURE CONTROL RANGE	15°C--30°C
TEMPERATURE CONTROL ACCURACY	±0.3°C
TEMPERATURE RESOLUTION	0.1°C
INTERFACE	USB AND RS232
DATA STORAGE CAPACITY	1000 PIECES
DISPLAY MODE	5.6" TFT TOUCH SCREEN
POWER SUPPLY	220VAC±10% 50HZ
SAMPLE CHAMBER	ACCEPTS SAMPLE TUBES UP TO 200MM
POWER	250W
NET WEIGHT	24KG
CALIBRATION MODE	AUTOMATIC CALIBRATION
DIMENSION	708MMX330MMX287MM

ORDERING INFORMATIONS:

PRODUCT NO	MODEL NO	DESCRIPTION
SCT-105.001.42	SCT-NICOL-3	SCT-NICOL-3 Fully Automatic Digital Polarimeter supplied complete with Instruction manual.

ScichemTech - SCT[®] MICROSCOPES

“Microscopy” is one of the most popular and widely used optical techniques in the field of Science and Industry. We at ScichemTech are very keen to cater to this need and usage by the scientific community and decided to make optical based Microscopes. In the following pages you will find a wide variety of Microscopes generally used by the scientific and industrial community. In our SCT range, we have many sub types of the Compound and Stereo microscopes. We have named all the individual models in the names of various precious and valuable stones keeping in mind the high quality of optics, lenses and majestic design and look. We have almost covered all the basic and major applications of microscopes in the science and industry. We are sure that, our valuable customers will accept and admire the quality and the spec's of our SCT microscopes.

SCT SIMPLE COMPOUND BINOCULAR MICROSCOPE

SALIENT FEATURES:

- SCT-OPAL-1 compound microscope has simple and elegant design
- Binocular head inclined at 45°C
- Microscope is made by good quality material and High quality optics.
- Basic-Simple compound biological microscope
- Fitted with Halogen lamp (6V-20W) for illumination
- Supplied with standard Achromatic Objectives
- Movable Stage with the range 75 x 45 mm
- Voltage: AC 110 V or 230 V, DC output 6V.



TECHNICAL SPECIFICATIONS:

PRODUCT NO.	SCT-105.002.01
SCT MODEL NO.	SCT-OPAL-1
VIEWING HEAD	SLIDING TYPE BINOCULAR HEAD, INCLINED AT 45°C
EYE PIECE	WF 10 X
OBJECTIVES	ACHROMATIC 4X, 10 X, 40 X(S), 100X (S.OIL)
FOCUS	FOCUSING RANGE : 30 MM AND FOCUSING INTERVAL 0.002 MM
ILLUMINATION	6V / 20 W HALOGEN LAMP
STAGE	142 MM X 132 MM, MOVING RANGE 75 MM X 45 MM
VOLTAGE AND POWER	AC 110V OR 230V, DC OUT PUT 6V

ORDERING INFORMATION:

PRODUCT NO.	MODEL NO.	DESCRIPTION
SCT-105.002.01	SCT-OPAL-1	SCT OPAL-1 COMPOUND BINOCULAR MICROSCOPE IS SUPPLIED WITH MAIN BODY, BINOCULAR EYEPIECE TUBE, WF10X, ACHROMATIC 4X, ACHROMATIC 10X, ACHROMATIC 40X, ACHROMATIC 100X OIL, QUADRUPLE NOSEPIECE, DOUBLE LAYERS MECHANICAL STAGE, 6V / 20W HALOGEN LAMP, IMMERSION OIL & DUST COVER, INSTRUCTION MANUAL AND READY TO USE.

OPTIONAL ACCESSORIES SELECT ONLY IF REQUIRED:

EYE PIECE	
SCT-105.002.1A	WF10X
SCT-105.002.1B	WF15X
SCT-105.002.1C	WF20X
OBJECTIVE	
SCT-105.002.1E	ACHROMATIC 4X
SCT-105.002.1F	ACHROMATIC 10X
SCT-105.002.1G	ACHROMATIC 20X
SCT-105.002.1H	ACHROMATIC 40X
SCT-105.002.1I	ACHROMATIC 60X
SCT-105.002.1J	ACHROMATIC 100X OIL
SPARE-ACCESSORIES	
SCT-105.002.1M	POWER CORD TYPE BE 220-240V
SCT-105.002.1N	6V / 20W HALOGEN LAMP
SCT-105.002.1O	IMMERSION OIL A, 8CC
SCT-105.002.1P	BLUE FILTER
SCT-105.002.1Q	GREEN FILTER
SCT-105.002.1R	1.0X C-MOUNT

SCT BIOLOGICAL COMPOUND BINOCULAR MICROSCOPES

SALIENT FEATURES:

- SCT OPAL-2 Biological Compound Microscope has modern and elegant design.
- Binocular head inclined at 30°.
- Microscope is made by good quality material and High quality optics.
- Plan-achromatic objectives for the better resolution
- Basic- compound biological microscope for routine investigation.
- Fitted with Halogen lamp (6V-20W) for illumination.
- Supplied with standard Plan Achromatic Objectives
- Movable Stage with the range 76 x 52 mm.
- Voltage: AC 85 V to 265 V.



TECHNICAL SPECIFICATIONS:

PRODUCT NO.	SCT-105.002.02
SCT MODEL NO.	SCT-OPAL-2
VIEWING HEAD	SLIDING TYPE BINOCULAR HEAD, INCLINED AT 30°
EYE PIECE	WF 10 X
OBJECTIVES	PLAN-ACHROMATIC, 4X, 10 X, 40 X(S), 100X (S.OIL)
FOCUS	FINE & COARSE FOCUSING & FOCUSING INTERVAL 0.002 MM
ILLUMINATION	6V / 20 W HALOGEN LAMP
STAGE	141 MM X 132 MM, MOVING RANGE 76MM X 52MM
VOLTAGE AND POWER	UNIVERSAL VOLTAGE 85V TO 265V

ORDERING INFORMATION:

PRODUCT NO.	MODEL NO.	DESCRIPTION
SCT-105.002.02	SCT-OPAL-2	SCT OPAL-2 BIOLOGICAL MICROSCOPE IS SUPPLIED WITH MAIN BODY, BINOCULAR EYEPIECE TUBE, WF10X, PLAN-ACHROMATIC 4X, PLAN-ACHROMATIC 10X, PLAN-ACHROMATIC 40X, PLAN-ACHROMATIC 100X, QUADRUPLE NOSEPIECE, DOUBLE LAYERS MECHANICAL STAGE, 6V / 20W HALOGEN LAMP, IMMERSION OIL A, & DUST COVER, INSTRUCTION MANUAL AND READY TO USE.

OPTIONAL ACCESSORIES (SELECT ONLY IF REQUIRED)

	EYEPIECE
SCT-105.002.2A	WF10X/20MM
SCT-105.002.2B	WF10X/18MM
SCT-105.002.2C	WF15X
SCT-105.002.2E	WF20X
	OBJECTIVE
SCT-105.002.2S	PLAN ACHROMATIC 4X
SCT-105.002.2T	PLAN ACHROMATIC 10X
SCT-105.002.2U	PLAN ACHROMATIC 20X
SCT-105.002.2V	PLAN ACHROMATIC 40X
SCT-105.002.2W	PLAN ACHROMATIC 60X
SCT-105.002.2X	PLAN ACHROMATIC 100X
	ACCESSORIES
SCT-105.002.2AH	POWER CORD TYPE
SCT-105.002.2AI	6V / 20W HALOGEN LAMP
SCT-105.002.2AJ	IMMERSION OIL A, 8CC
SCT-105.002.2AK	BLUE FILTER
SCT-105.002.2AL	GREEN FILTER
SCT-105.002.2AM	YELLOW FILTER
SCT-105.002.2AO	1.0X C-MOUNT

SCT ADVANCED BINOCULAR MICROSCOPE

SALIENT FEATURES:

- SCT OPAL-3 Advanced Binocular Microscope has modern and elegant design for Biological Lab use.
- Binocular head inclined at 30. Seidentopf type binocular head.
- Microscope is made by good quality material and High quality optics.
- Compound biological microscope for routine investigation.
- Coaxial coarse and fine focusing and focusing interval at 0.002 mm
- Abbe type N.A 1.25 condenser with iris diaphragm.
- Better illumination with (Kohler Type) adjustable brightness.
- Fitted with Halogen lamp (6V-20W) for illumination.
- Supplied with standard Plan Achromatic Objectives
- Double layer Movable mechanical Stage (140 x 132 mm) with removable slide holder (120x132 mm).
- Voltage: AC 110 V or 230 V, DC output 6V.



TECHNICAL SPECIFICATIONS:

PRODUCT NO.	SCT-105.002.03
SCT MODEL NO.	SCT-OPAL-3
VIEWING HEAD	SEIDENTOPF TYPE BINOCULAR HEAD, INCLINED AT 30
EYE PIECE	WF 10 X
OBJECTIVES	ACHROMATIC 4X, 10 X, 40 X(S), 100X (S.OIL)
FOCUS	Fine & Coarse FOCUSING. FOCUSING INTERVAL 0.002 MM
ILLUMINATION	6V / 20 W HALOGEN LAMP
STAGE	142 MM X 132 MM, MOVING RANGE 75 MM X 45 MM
VOLTAGE AND POWER	AC 110 V OR 230 V, DC OUT PUT 6V

ORDERING INFORMATIONS:

PRODUCT NO.	MODEL NO.	DESCRIPTION
SCT-105.002.03	SCT-OPAL-3	SCT OPAL-3 ADVANCED BINOCULAR MICROSCOPE IS SUPPLIED WITH MAIN BODY, BINOCULAR EYEPIECE TUBE, WF10X, ACHROMATIC 4X, ACHROMATIC 10X, ACHROMATIC 40X, ACHROMATIC 100X OIL, QUADRUPLE NOSEPIECE, DOUBLE LAYERS MECHANICAL STAGE, 6V / 20W HALOGEN LAMP, IMMERSION OIL A, & DUST COVER. INSTRUCTION MANUAL AND READY TO USE.

210

OPTIONAL ACCESSORIES (SELECT ONLY IF REQUIRED)

	EYEPIECE
SCT-105.002.3A	WF10X
SCT-105.002.3B	WF15X
SCT-105.002.3C	WF20X
	OBJECTIVE
SCT-105.002.3E	ACHROMATIC 4X
SCT-105.002.3F	ACHROMATIC 10X
SCT-105.002.3G	ACHROMATIC 20X
SCT-105.002.3H	ACHROMATIC 40X
SCT-105.002.3I	ACHROMATIC 60X
SCT-105.002.3J	ACHROMATIC 100X OIL
	SPARE-ACCESSORIES
SCT-105.002.3M	POWER CORD TYPE BE 220-240V
SCT-105.002.3N	6V / 20W HALOGEN LAMP
SCT-105.002.3O	IMMERSION OIL A, 8CC
SCT-105.002.3P	BLUE FILTER
SCT-105.002.3Q	GREEN FILTER
SCT-105.002.3R	1.0X C-MOUNT

SCT PROFESSIONAL GRADE BIOLOGICAL MICROSCOPE

SALIENT FEATURES:

- SCT-OPAL-4 Professional Grade Biological Binocular Microscope has modern and elegant design for Research Biological Lab use.
- Binocular head inclined at 30. Dipter adjustable.
- Seidentopf type binocular head.
- Microscope is made by good quality material and High quality optics.
- Compound biological microscope for advance investigations.
- Coaxial coarse and fine focusing and focusing interval at 0.002 mm
- Abbe type N.A 1.25 condenser with iris diaphragm.
- Better illumination with (Kohler Type) adjustable brightness.
- 3 watt LED lamp illumination.
- Supplied with standard infinite Achromatic Objectives
- Double layer Movable mechanical Stage (140x132 mm) with removable slide holder (120x132 mm).
- Voltage: AC 110 V - 230 V, DC output 6 V.



TECHNICAL SPECIFICATIONS:

PRODUCT NO.	SCT-105.002.04
SCT MODEL NO.	SCT-OPAL-4
VIEWING HEAD	SEIDENTOPF TYPE BINOCULAR HEAD, INCLINED AT 30
EYE PIECE	WF 10 X
OBJECTIVES	INFINITY ACHROMATIC, 4X, 10 X, 40 X, 100X (S.OIL)
FOCUS	FINE & COARSE FOCUSING. FOCUSING INTERVAL 0.002 MM
ILLUMINATION	3W LED LAMP
STAGE	140 MM X 132 MM, MOVING RANGE 76 MM X 50 MM
VOLTAGE AND POWER	AC 110 V OR 230 V, DC OUT PUT 6V

ORDERING INFORMATIONS:

PRODUCT NO.	MODEL NO.	DESCRIPTION
SCT-105.002.04	SCT-OPAL-4	SCT OPAL-4 PROFESSIONAL GRADE BIOLOGICAL MICROSCOPE IS SUPPLIED WITH MAIN BODY, WF10X/20MM EYEPIECE, ADJUSTABLE DIOPTR, BINOCULAR HEAD, EYEPIECE TUBE, REVERSED QUINTUPLE NOSEPIECE, INFINITE PLAN ACHROMATIC 4X, 10X, 40X, 100X, 3W LED ILLUMINATION, DUST COVER, INSTRUCTION MANUAL AND READY TO USE.

OPTIONAL ACCESSORIES SELECT ONLY IF REQUIRED:

	EYEPIECE
SCT-105.002.4A	WF10X/20MM
SCT-105.002.4B	WF10X/18MM
	INFINITY PLAN ACHROMATIC OBJECTIVE
SCT-105.002.4C	INFINITY PLAN ACHROMATIC 4X
SCT-105.002.4D	INFINITY PLAN ACHROMATIC 10X
SCT-105.002.4E	INFINITY PLAN ACHROMATIC 20X
SCT-105.002.4F	INFINITY PLAN ACHROMATIC 40X
SCT-105.002.4G	INFINITY PLAN ACHROMATIC 100X
	ACCESSORIES
SCT-105.002.4H	POWER CORD TYPE BE 220-240V
SCT-105.002.4I	6V / 20W HALOGEN LAMP
SCT-105.002.4J	IMMERSION OIL A, 8CC
SCT-105.002.4K	BLUE FILTER
SCT-105.002.4L	GREEN FILTER
SCT-105.002.4M	YELLOW FILTER
SCT-105.002.4N	1.0X C-MOUNT
	OTHER -ACCESSORIES
SCT-105.002.4O	DRY TYPE DARK FIELD FOR 4X, 10X, 20X, 40X
SCT-105.002.4P	SIMPLE POLARIZATION KIT
SCT-105.002.4Q	PHASE CONTRAST WITH 10X, 20X, 40X, 100X PH LENS

211

SCT PROFESSIONAL RESEARCH GRADE BIOLOGICAL MICROSCOPE

SALIENT FEATURES:

- Modern and elegant design for Professional Research Biological Lab use.
- Binocular head inclined at 30. Dipter adjustable.
- Seidentopf type binocular head.
- Microscope is made by good quality material and High quality optics.
- Compound biological microscope for advance-research investigations.
- Coaxial coarse and fine focusing and focusing interval at 0.002 mm
- Abbe type N.A 1.25 condenser with iris diaphragm.
- Better illumination with (Kohler Type) adjustable brightness.
- 3 watt LED lamp illumination, Optional fluorecence kit available
- Supplied with standard infinite Plan Achromatic Objectives
- Can be attached or upgraded with the options like, Phase contrast, simple polarization and the infinite plan semi apochromatic fluorescent objectives.
- Double layer Movable mechanical Stage (140 x 132 mm) with removable slide holder (76 x 50 mm).
- Voltage: AC 110 V -- 230 V, DC output 6V.

TECHNICAL SPECIFICATIONS:

PRODUCT NO.	SCT-105.002.05
SCT MODEL NO.	SCT-OPAL-5
VIEWING HEAD	SEIDENTOPF TYPE BINOCULAR HEAD, INCLINED AT 30
EYE PIECE	WF 10 X
OBJECTIVES	INFINITY PLAN ACHROMATIC, 4X, 10 X, 40 X, 100X (S.OIL)
FOCUS	FINE & COARSE FOCUSING. FOCUSING INTERVAL 0.002 MM
ILLUMINATION	3W LED LAMP
STAGE	140 MM X 132 MM MOVING RANGE 76 MM X 50 MM
VOLTAGE AND POWER	AC 110 V OR 230 V, DC OUT PUT 6V



ORDERING INFORMATIONS:

PRODUCT NO.	MODEL NO.	DESCRIPTION
SCT-105.002.05	SCT-OPAL-5	SCT OPAL-5 PROFESSIONAL GRADE LAB BIOLOGICAL MICROSCOPE IS SUPPLIED WITH MAIN BODY, WF10X/22MM EYEPIECE, ADJUSTABLE DIOPTR, BINOCULAR HEAD, EYEPIECE TUBE, REVERSED QUINTUPLE NOSE PIECE, INFINITE PLAN ACHROMATIC 4X, 10X, 40X, 100X, 3W LED ILLUMINATION. DUST COVER, INSTRUCTION MANUAL AND READY TO USE.

OPTIONAL ACCESSORIES SELECT ONLY IF REQUIRED

	EYEPIECE
SCT-105.002.5A	WF10X/20MM
SCT-105.002.5B	WF10X/22MM
	INFINITY PLAN ACHROMATIC OBJECTIVE
SCT-105.002.5C	INFINITY PLAN ACHROMATIC 4X
SCT-105.002.5D	INFINITY PLAN ACHROMATIC 10X
SCT-105.002.5E	INFINITY PLAN ACHROMATIC 20X
SCT-105.002.5F	INFINITY PLAN ACHROMATIC 40X
SCT-105.002.5G	INFINITY PLAN ACHROMATIC 100X
	ACCESSORIES
SCT-105.002.5H	POWER CORD TYPE BE 220-240V
SCT-105.002.5I	6V / 20W HALOGEN LAMP
SCT-105.002.5J	IMMERSION OIL A, 8CC
SCT-105.002.5K	BLUE FILTER
SCT-105.002.5L	GREEN FILTER
SCT-105.002.5M	YELLOW FILTER
SCT-105.002.5N	1.0X C-MOUNT
	OTHER -ACCESSORIES
SCT-105.002.5O	DRY TYPE DARK FIELD FOR 4X, 10X, 20X, 40X
SCT-105.002.5P	SIMPLE POLARIZATION KIT
SCT-105.002.5Q	PHASE CONTRAST WITH 10X, 20X, 40X, 100X PH LENS
SCT-105.002.5R	EPI-FLUORESCENCE KIT CONSIST: POWER SUPPLY AND REFLECTED FLUORESCENT ILLUMINATOR INFINITY PLAN SEMI-APOCHROMATIC FLUORESCENT OBJECTIVES 4X, 10X, 40X, 100X

212

SCT INVERTED BIOLOGICAL MICROSCOPE

SALIENT FEATURES:

- Modern and elegant design
- Inverted Biological microscope used for all inverted applications
- Trinocular head inclined at 45, seidentopf type
- Microscope is made by good quality material and High quality optics.
- Coaxial coarse and fine focusing and focusing interval at 0.002 mm
- Good for all types of morphological studies, Light source from the top
- Fitted with Halogen lamp (6V-20W) for illumination
- Supplied with standard LWD Plan Achromatic Objectives
- Movable Stage with the range 75 x 50 mm and the stage 242 x 172.
- Voltage: AC 110 V or 230 V, DC output 6V.



TECHNICAL SPECIFICATIONS:

PRODUCT NO.	SCT-105.002.06
SCT MODEL NO.	SCT-OPAL-6
VIEWING HEAD	SEIDENTOPF TYPE TRINOCULAR HEAD, INCLINED AT 45
EYE PIECE	WF 10 X
OBJECTIVES	LWD PLAN Achromatic OBJECTIVE 4X, 10X, 40X LWD PH PLAN OBJECTIVE 25X
FOCUS	FINE & COARSE FOCUSING, FOCUSING INTERVAL 0.002 MM
ILLUMINATION	6V / 20 W HALOGEN LAMP
STAGE	242 MM X 172 MM, MOVING RANGE 75 MM X 50 MM
ATTACHMENT	PHASE CONTRAST
VOLTAGE AND POWER	AC 110 V OR 230 V, DC OUT PUT 6V

ORDERING INFORMATION:

PRODUCT NO.	MODEL NO.	DESCRIPTION
SCT-105.002.06	SCT-OPEL-6	SCT OPAL-6 INVERTED BIOLOGICAL MICROSCOPE IS SUPPLIED WITH MAIN BODY, TRINOCULAR EYEPIECE TUBE, WF10X, LWD PLAN OBJECTIVE 4X, LWD PLAN OBJECTIVE 10X, LWD PH PLAN OBJECTIVE 25X, LWD PLAN OBJECTIVE 40X, QUADRUPLE NOSEPIECE, DUST COVER, INSTRUCTION MANUAL AND READY TO USE.

OPTIONAL ACCESSORIES SELECT ONLY IF REQUIRED:

	EYEPIECE
SCT-105.002.6A	WF10X/20MM
SCT-105.002.6B	WF10X/18MM
SCT-105.002.6C	WF15X
SCT-105.002.6D	WF16X
SCT-105.002.6E	WF20X
	LWD PLAN ACHROMATIC OBJECTIVE
SCT-105.002.6F	LWD PLAN ACHROMATIC 2.5X
SCT-105.002.6G	LWD PLAN ACHROMATIC 4X
SCT-105.002.6H	LWD PLAN ACHROMATIC 10X
SCT-105.002.6I	LWD PLAN ACHROMATIC 25X
SCT-105.002.6J	LWD PLAN ACHROMATIC 40X
	LWD PLAN PHASE CONTRAST OBJECTIVE
SCT-105.002.6K	LWD PLAN PHASE CONTRAST OBJECTIVE 10X
SCT-105.002.6L	LWD PLAN PHASE CONTRAST OBJECTIVE 25X
SCT-105.002.6M	LWD PLAN PHASE CONTRAST OBJECTIVE 40X
SCT-105.002.6N	PHASE CONTRAST ANNULAR SPOT 10X
SCT-105.002.6O	PHASE CONTRAST ANNULAR SPOT 25X
SCT-105.002.6P	PHASE CONTRAST ANNULAR SPOT 40X
	ACCESSORIES
SCT-105.002.6Q	POWER CORD TYPE BE 220-240V
SCT-105.002.6R	6V / 20W HALOGEN LAMP
SCT-105.002.6S	IMMERSION OIL A, 8CC
SCT-105.002.6T	BLUE FILTER
SCT-105.002.6U	GREEN FILTER
SCT-105.002.6V	YELLOW FILTER
SCT-105.002.6W	0.6X C-MOUNT
SCT-105.002.6X	1.0X C-MOUNT
	OTHER -ACCESSORIES
SCT-105.002.6Y	FIXED STAGE WITH CLIPS
SCT-105.002.6Z	96 HOLES MECHANICAL STAGE

SCT DIGITAL BIOLOGICAL MICROSCOPE

SALIENT FEATURES:

- Modern and elegant design for Biological Lab use.
- Binocular head inclined at 30. Seidentopf type binocular head.
- Microscope is made by good quality material and High quality optics.
- Compound Digital biological microscope for routine and advance investigations.
- Coaxial coarse and fine focusing and focusing interval at 0.002 mm
- Abbe type N.A 1.25 condenser with iris diaphragm.
- Better illumination with (Kohler Type) adjustable brightness.
- Fitted with Halogen lamp (6V-20W) for illumination.
- Supplied with standard Achromatic Objectives
- Double layer Movable mechanical Stage (142x132 mm) with removable slide holder (75x40 mm).
- Voltage: AC 110 V or 230 V, DC output 6V.

TECHNICAL SPECIFICATIONS:

PRODUCT NO.	SCT-105.002.11
SCT MODEL NO.	SCT- DIAMOND-11
VIEWING HEAD	SEIDENTOPF TYPE BINOCULAR HEAD, INCLINED AT 30
EYE PIECE	WF 10 X
OBJECTIVES	ACHROMATIC 4X,10 X, 40 X(S), 100X (S.OIL)
FOCUS	FINE & COARSE FOCUSING AND FOCUSING INTERVAL 0.002 MM
ILLUMINATION	6V / 20 W HALOGEN LAMP
STAGE	142 MM X 132 MM, MOVING RANGE 75 MM X 40 MM
VOLTAGE AND POWER	AC 110 V OR 230 V, DC OUT PUT 6V

ORDERING INFORMATION:

PRODUCT NO.	MODEL NO.	DESCRIPTION
SCT-105.002.11	SCT- DIAMOND-11	SCT DIAMOND-11 DIGITAL BIOLOGICAL MICROSCOPE IS SUPPLIED WITH MAIN BODY, BINOCULAR EYEPIECE TUBE,WF10X, ACHROMATIC 4X, ACHROMATIC 10X, ACHROMATIC 40X, ACHROMATIC 100X OIL, QUADRUPLE NOSEPIECE, DOUBLE LAYERS MECHANICAL STAGE, 6V / 20W HALOGEN LAMP, IMMERSION OIL, DUST COVER, INSTRUCTION MANUAL AND READY TO USE.

OPTIONAL ACCESSORIES SELECT ONLY IF REQUIRED:

	EYEPIECE
SCT-105.002.11A	WF10X
SCT-105.002.11B	WF15X
SCT-105.002.11C	WF20X
	OBJECTIVE
SCT-105.002.11D	ACHROMATIC 4X
SCT-105.002.11E	ACHROMATIC 10X
SCT-105.002.11F	ACHROMATIC 40X
SCT-105.002.11G	ACHROMATIC 100X OIL
	ACCESSORIES
SCT-105.002.11H	POWER CORD TYPE BE 220-240V
SCT-105.002.11I	6V / 20W HALOGEN LAMP
SCT-105.002.11J	IMMERSION OIL A, 8CC
SCT-105.002.11K	BLUE FILTER
SCT-105.002.11L	GREEN FILTER



SCT LCD BIOLOGICAL MICROSCOPE (2.5 "TFT - LCD)

SALIENT FEATURES:

- Modern and elegant design for Biological educational Lab use.
- Binocular head inclined at 45. Seidentopf type binocular head.
- Microscope is made by good quality material and High quality optics.
- Compound LCD-Liquid crystal Display Digital biological microscope for routine investigation.
- Supplied with 2.5" TFT LCD for easy viewing.
- Coaxial coarse and fine focusing and focusing interval at 0.002 mm
- Abbe type N.A 1.25 condenser with iris diaphragm.
- Better illumination with (Kohler Type) adjustable brightness.
- Fitted with Halogen lamp (6V-20W) for illumination.
- Supplied with standard Achromatic Objectives
- Double layer Movable mechanical Stage (140x140 mm) with removable slide holder (75x50 mm).
- Voltage: AC 110 V or 230 V, DC output 6V.



TECHNICAL SPECIFICATIONS:

PRODUCT NO.	SCT-105.002.16
SCT MODEL NO.	SCT-RUBY-16
VIEWING HEAD	SEIDENTOPF TYPE BINOCULAR HEAD, INCLINED AT 45, IPD=48MM-75MM
EYE PIECE	WF 10 X
OBJECTIVES	ACHROMATIC 4X, 10 X, 40 X(S), 100X (S.OIL)
FOCUS	FINE & COARSE FOCUSING. FOCUSING INTERVAL 0.002 MM
ILLUMINATION	6V / 20 W HALOGEN LAMP
STAGE	140 MM X 140 MM, MOVING RANGE 75 MM X 50 MM
ATTACHMENT	2.5" TFT LCD WITH DIFFERENT LANGUAGES
VOLTAGE AND POWER	AC 110 V OR 230 V, DC OUT PUT 6V

ORDERING INFORMATION:

PRODUCT NO.	MODEL NO.	DESCRIPTION
SCT-105.002.16	SCT-RUBY-16	SCT RUBY-16 LCD BIOLOGICAL MICROSCOPE IS SUPPLIED WITH MAIN BODY, BINOCULAR EYEPIECE TUBE, WF10X, SEMI-PLAN ACHROMATIC 4X, SEMI-PLAN ACHROMATIC 10X, SEMI-PLAN ACHROMATIC 40X, SEMI-PLAN ACHROMATIC 100X OIL, QUADRUPLE NOSEPIECE, DOUBLE LAYERS MECHANICAL STAGE, 6V / 20W HALOGEN LAMP, IMMERSION OIL, DUST COVER, INSTRUCTION MANUAL AND READY TO USE.

OPTIONAL ACCESSORIES SELECT ONLY IF REQUIRED

	EYEPIECE
SCT-105.002.16A	WF10X
SCT-105.002.16B	WF15X
SCT-105.002.16C	WF20X
	OBJECTIVE
SCT-105.002.16D	SEMI-PLAN ACHROMATIC 4X
SCT-105.002.16E	SEMI-PLAN ACHROMATIC 10X
SCT-105.002.16F	SEMI-PLAN ACHROMATIC 40X
SCT-105.002.16G	SEMI-PLAN ACHROMATIC 100X OIL
	ACCESSORIES
SCT-105.002.16H	POWER CORD TYPE BE 220-240V
SCT-105.002.16I	6V / 20W HALOGEN LAMP
SCT-105.002.16J	IMMERSION OIL A, 8CC
SCT-105.002.16K	BLUE FILTER
SCT-105.002.16L	GREEN FILTER

SCT LCD LAB BIOLOGICAL MICROSCOPE (8.4 " TFT - LCD)

SALIENT FEATURES:

- Modern and elegant design for Biological and educational Lab use.
- Binocular head inclined at 45. Seidentopf type binocular head.
- Microscope is made by good quality material and High quality optics.
- Compound LCD-Liquid crystal Display Digital biological microscope for routine investigations.
- Supplied with 8.4" TFT LCD with built-in windows system for easy analysis & viewing.
- Coaxial coarse and fine focusing and focusing interval at 0.002 mm
- Abbe type N.A 1.25 condenser with iris diaphragm.
- Better illumination with (Kohler Type) adjustable brightness.
- Fitted with Halogen lamp (6V-20W) for illumination.
- Supplied with standard infinity semi plan Achromatic Objectives
- Double layer Movable mechanical Stage (140 x 140 mm) with removable slide holder (75 x 50 mm).
- Voltage: AC 110 V or 230 V, DC output 6V.



TECHNICAL SPECIFICATIONS:

PRODUCT NO.	SCT-105.002.17
SCT MODEL NO.	SCT-RUBY-17
VIEWING HEAD	SEIDENTOPF TYPE BINOCULAR HEAD, INCLINED AT 45, IPD=48MM-75MM
EYE PIECE	WF 10X
OBJECTIVES	INFINITY SEMI-PLAN ACHROMATIC 4X, 10X, 40X (S), 100X (S.OIL)
FOCUS	FINE & COARSE FOCUSING AND FOCUSING INTERVAL 0.002 MM
ILLUMINATION	6V / 20 W HALOGEN LAMP
STAGE	140 MM X 140 MM ,MOVING RANGE 75 MM X 50 MM
ATTACHMENT	8.4" TFT TOUCHING LCD WITH WINDOWS SYSTEM
VOLTAGE AND POWER	AC 110 V OR 230 V, DC OUT PUT 6V

ORDERING INFORMATION:

PRODUCT NO.	MODEL NO.	DESCRIPTION
SCT-105.002.17	SCT-RUBY-17	SCT RUBY-17 LCD LAB BIOLOGICAL MICROSCOPE SUPPLIED WITH MAIN BODY, BINOCULAR EYEPIECE TUBE, WF10X, INFINITY SEMI-PLAN ACHROMATIC 4X, INFINITY SEMI-PLAN, ACHROMATIC 10X, INFINITY SEMI-PLAN ACHROMATIC 40X, INFINITY SEMI-PLAN ACHROMATIC 100X OIL, QUADRUPLE NOSEPIECE, DOUBLE LAYERS MECHANICAL STAGE, 6V / 20W HALOGEN LAMP, IMMERSION OIL, DUST COVER, INSTRUCTION MANUAL AND READY TO USE.

OPTIONAL ACCESSORIES SELECT ONLY IF REQUIRED

	EYEPIECE
SCT-105.002.17A	WF10X
SCT-105.002.17B	WF15X
SCT-105.002.17C	WF20X
	OBJECTIVE
SCT-105.002.17D	SEMI-PLAN ACHROMATIC 4X
SCT-105.002.17E	SEMI-PLAN ACHROMATIC 10X
SCT-105.002.17F	SEMI-PLAN ACHROMATIC 40X
SCT-105.002.17G	SEMI-PLAN ACHROMATIC 100X OIL
	ACCESSORIES
SCT-105.002.17H	POWER CORD TYPE BE 220-240V
SCT-105.002.17I	6V / 20W HALOGEN LAMP
SCT-105.002.17J	IMMERSION OIL, 8CC
SCT-105.002.17K	BLUE FILTER
SCT-105.002.17L	GREEN FILTER

SCT PROFESSIONAL GRADE INVERTED BIOLOGICAL MICROSCOPE

SALIENT FEATURES:

- Modern and elegant design
- Professional type Inverted Biological microscope, suitable for all the inverted Applications
- Trinocular head inclined at 30, Seidentopf type
- Microscope is made by good quality material and High quality optics.
- Coaxial coarse and fine focusing and focusing interval at 0.002 mm
- Good for all types of morphological studies The light source inform the top
- Fitted with Halogen lamp (6V-20W) for illumination
- Supplied with standard LWD infinity Plan phase Objectives
- Movable Stage with the range 75 x 50 mm and the stage 250 x 160mm.
- Supplied with auxiliary stage 70 x 180 mm.
- Voltage: AC 110 V or 230 V, DC output 6V.

TECHNICAL SPECIFICATIONS:

PRODUCT NO.	SCT-105.002.21
SCT MODEL NO.	SCT-GARNET-21
VIEWING HEAD	SEIDENTOPF TYPE TRINOCULAR HEAD, INCLINED AT 30, IPD=48-75MM
EYE PIECE	WF 10X
OBJECTIVES	LWD INFINITY PLAN OBJECTIVE 4X, 40X INFINITY PLAN PHASE OBJECTIVE 10X, 20X
FOCUS	FINE & COARSE FOCUSING. FOCUSING INTERVAL 0.002 MM
ILLUMINATION	6V / 30 W HALOGEN LAMP
STAGE	250 MM X 160 MM, AUXILIARY STAGE 70 MM X 180 MM
ATTACHMENT	PHASE CONTRAST
VOLTAGE AND POWER	AC 110 V OR 230 V, DC OUT PUT 6V

ORDERING INFORMATION:

PRODUCT NO.	MODEL NO.	DESCRIPTION
SCT-105.002.21	SCT-GARNET-21	SCT GARNET-21 PROFESSIONAL GRADE INVERTED BIOLOGICAL MICROSCOPE IS SUPPLIED WITH MAIN BODY, TRINOCULAR EYEPIECE TUBE, EX10X/22MM EYEPIECE, LWD INFINITY PLAN OBJECTIVE 4X, LWD INFINITY PLAN OBJECTIVE 40X, INFINITY PLAN PHASE OBJECTIVE 10X, INFINITY PLAN PHASE OBJECTIVE 20X, QUINTUPLE NOSEPIECE, 10X-20X PHASE ANNULUS PLATE, DUST COVER, INSTRUCTION MANUAL AND READY TO USE.



OPTIONAL ACCESSORIES SELECT ONLY IF REQUIRED:

	EYEPIECE
SCT-105.002.21A	WF10X
	LWD PLAN ACHROMATIC OBJECTIVE
SCT-105.002.21B	LWD INFINITY PLAN OBJECTIVE 4X
SCT-105.002.21C	LWD INFINITY PLAN OBJECTIVE 10X
SCT-105.002.21D	LWD INFINITY PLAN OBJECTIVE 20X
SCT-105.002.21E	LWD INFINITY PLAN OBJECTIVE 40X
	INFINITY PLAN PHASE OBJECTIVE
SCT-105.002.21F	LWD PLAN PHASE CONTRAST OBJECTIVE 10X
SCT-105.002.21G	LWD PLAN PHASE CONTRAST OBJECTIVE 20X
SCT-105.002.21H	PHASE CONTRAST ANNULAR SPOT 10X-20X
	ACCESSORIES
SCT-105.002.21I	POWER CORD TYPE BE 220-240V
SCT-105.002.21J	6V / 20W HALOGEN LAMP
SCT-105.002.21K	IMMERSION OIL A, 8CC
SCT-105.002.21L	BLUE FILTER
SCT-105.002.21M	GREEN FILTER
SCT-105.002.21N	YELLOW FILTER
SCT-105.002.21O	0.6X C-MOUNT
SCT-105.002.21P	1.0X C-MOUNT
	OTHER -ACCESSORIES
SCT-105.002.21Q	ATTACHABLE MECHANICAL STAGE
SCT-105.002.21R	35MM DIAMETER PETRI DISH HOLDER
SCT-105.002.21S	54MM DIAMETER PETRI DISH HOLDER

SCT DIGITAL FLUORESCENCE MICROSCOPE

SALIENT FEATURES:

- Modern and elegant design for Biological Lab use.
- Tri Binocular head inclined at 45. Seidentopf type binocular head.
- Microscope is made by good quality material and High quality optics.
- Compound biological Fluorescent microscope for fluorescence investigation.
- Coaxial coarse and fine focusing and focusing interval at 0.002 mm
- Abbe type N.A 1.25 condenser with iris diaphragm.
- Better illumination with (Kohler Type) adjustable brightness.
- 100 watt HBO mercury lamp for fluorescence analysis
- Fitted with Halogen lamp (6V-20W) for illumination.
- Supplied with standard infinity Plan Achromatic Objectives
- Double layer Movable mechanical Stage (155x145 mm) with removable slide holder (75x50 mm).
- Voltage: AC 110 V or 230 V, DC output 6V.

TECHNICAL SPECIFICATIONS:

PRODUCT NO.	SCT-105.002.26
SCT MODEL NO.	SCT-TOPAZ-26
VIEWING HEAD	SEIDENTOPF TYPE BINOCULAR HEAD, INCLINED AT 45
EYE PIECE	WF 10 X
OBJECTIVES	INFINITY PLAN ACHROMATIC 4X, 10 X, 40 X, 100X (S.OIL)
FOCUS	FINE & COARSE FOCUSING AND FOCUSING INTERVAL 0.002 MM
ILLUMINATION	6V/20W HALOGEN LAMP
	100W HBO MERCURY LAMP FOR FLUORESCENCE OBSERVATION
STAGE	155 MM X 145 MM MOVING RANGE 75 MM X 50 MM
VOLTAGE AND POWER	AC 110 V OR 230 V, DC OUT PUT 6V

ORDERING INFORMATION:

PRODUCT NO.	MODEL NO.	DESCRIPTION
SCT-105.002.26	SCT-TOPAZ-26	SCT TOPAZ-26 FLUORESCENCE MICROSCOPE IS SUPPLIED WITH MAIN BODY, WF10X/22MM EYEPIECE, TRINOCULAR HEAD, EYEPIECE TUBE, INFINITE PLAN ACHROMATIC 4X, 10X, 40X, 100X, HBO 100W FLUORESCENCE ILLUMINATION, 6V/20W HALOGEN LAMP ILLUMINATION. DUST COVER, INSTRUCTION MANUAL AND READY TO USE. DUST COVER, INSTRUCTION MANUAL AND READY TO USE.

OPTIONAL ACCESSORIES SELECT ONLY IF REQUIRED:

	EYEPIECE
SCT-105.002.26A	WF10X/20MM
SCT-105.002.26B	WF15X
SCT-105.002.26C	WF16X
SCT-105.002.26D	WF20X
	INFINITY PLAN ACHROMATIC OBJECTIVE
SCT-105.002.26E	INFINITY PLAN ACHROMATIC 4X
SCT-105.002.26F	INFINITY PLAN ACHROMATIC 10X
SCT-105.002.26G	INFINITY PLAN ACHROMATIC 40X
SCT-105.002.26H	INFINITY PLAN ACHROMATIC 100X
	ACCESSORIES
SCT-105.002.26I	POWER CORD TYPE BE 220-240V
SCT-105.002.26J	6V / 20W HALOGEN LAMP
SCT-105.002.26K	100W HBO HALOGEN LAMP
SCT-105.002.26L	IMMERSION OIL A, 8CC
SCT-105.002.26M	BLUE FILTER
SCT-105.002.26N	GREEN FILTER
SCT-105.002.26O	YELLOW FILTER
SCT-105.002.26P	1.0X C-MOUNT



SCT PROFESSIONAL GRADE LAB BIOLOGICAL MICROSCOPE

SALIENT FEATURES:

- Modern and elegant design for Research Biological Lab use.
- Binocular head inclined at 30°. Dipter adjustable.
- Sliding type binocular head.
- Microscope is made by good quality material and High quality optics.
- Compound biological microscope for Professional investigation.
- Coaxial coarse and fine focusing and focusing interval at 0.002 mm
- Abbe type N.A 1.25 condenser with iris diaphragm.
- Better illumination with (Kohler Type) adjustable brightness.
- 6 V / 20 Watt Halogen lamp illumination.
- Supplied with standard infinite Plan Achromatic Objectives
- Double layer Movable mechanical Stage (190 x 140 mm) with removable slide holder (78 x 52 mm).
- Voltage: Universal AC 85 V - 265 V.



TECHNICAL SPECIFICATIONS:

PRODUCT NO.	SCT-105.002.27
SCT MODEL NO.	SCT-TOPAZ-27
VIEWING HEAD	SLIDING TYPE BINOCULAR HEAD, INCLINED AT 30°
EYE PIECE	WF 10 X
OBJECTIVES	INFINITY PLAN-ACHROMATIC 4X, 10 X, 40 X(S), 100X (S.OIL)
FOCUS	FINE & COARSE FOCUSING. FOCUSING INTERVAL 0.002 MM
ILLUMINATION	6V / 20 W HALOGEN LAMP
STAGE	190 MM X 140 MM, MOVING RANGE 78MM X 52MM
VOLTAGE AND POWER	UNIVERSAL VOLTAGE 85V TO 265V

ORDERING INFORMATION:

PRODUCT NO.	MODEL NO.	DESCRIPTION
SCT-105.002.27	SCT-TOPAZ-27	SCT TOPAZ-27 PROFESSIONAL GRADE LAB BIOLOGICAL MICROSCOPE IS SUPPLIED WITH MAIN BODY, BINOCULAR EYEPIECE TUBE, WF10X, INFINITY PLAN-ACHROMATIC 4X, INFINITY PLAN-ACHROMATIC 10X, INFINITY PLAN-ACHROMATIC 20X, INFINITY PLAN-ACHROMATIC 40X, INFINITY PLAN-ACHROMATIC 100X, QUINTUPLE NOSEPIECE, DOUBLE LAYERS MECHANICAL STAGE, 6V / 20W HALOGEN LAMP, IMMERSION OIL A, DUST COVER, INSTRUCTION MANUAL AND READY TO USE.

217

OPTIONAL ACCESSORIES SELECT ONLY IF REQUIRED:

	EYEPIECE
SCT-105.002.27A	WF10X/20MM
SCT-105.002.27B	WF10X/18MM
SCT-105.002.27C	WF15X
SCT-105.002.27D	WF16X
SCT-105.002.27E	WF20X
SCT-105.002.27F	WF10X/18MM, FOCUS (RETICLE 0.1MM)
SCT-105.002.27G	WF10X/20MM, FOCUS (RETICLE 0.1MM)
	INFINITY PLAN ACHROMATIC OBJECTIVE
SCT-105.002.27H	INFINITY PLAN ACHROMATIC 2.5X
SCT-105.002.27I	INFINITY PLAN ACHROMATIC 4X
SCT-105.002.27J	INFINITY PLAN ACHROMATIC 10X
SCT-105.002.27K	INFINITY PLAN ACHROMATIC 20X
SCT-105.002.27L	INFINITY PLAN ACHROMATIC 40X
SCT-105.002.27M	INFINITY PLAN ACHROMATIC 60X
SCT-105.002.27N	INFINITY PLAN ACHROMATIC 100X
	VIEWING HEAD
SCT-105.002.27O	SEIDENTOPF BINOCULAR HEAD
SCT-105.002.27P	SEIDENTOPF TRINOCULAR HEAD
	ACCESSORIES
SCT-105.002.27Q	POWER CORD
SCT-105.002.27R	6V / 20W HALOGEN LAMP
SCT-105.002.27S	IMMERSION OIL A, 8CC
SCT-105.002.27T	BLUE FILTER
SCT-105.002.27U	GREEN FILTER
SCT-105.002.27V	YELLOW FILTER
SCT-105.002.27W	0.5X C-MOUNT
SCT-105.002.27X	1.0X C-MOUNT

SCT LAB POLARISING BIOLOGICAL MICROSCOPE

SALIENT FEATURES :

- Modern and elegant design for Professional Research Biological Lab use.
- Binocular head inclined at 30°. Dipter adjustable.
- Sliding type binocular head.
- Good for polarising studies.
- Microscope is made by good quality material and High quality optics.
- Compound biological microscope for Professional investigation.
- Coaxial coarse and fine focusing and focusing interval at 0.002 mm
- Abbe type N.A 1.25 condenser with iris diaphragm.
- Better illumination with (Kohler Type) adjustable brightness.



TECHNICAL SPECIFICATIONS:

PRODUCT NO	SCT-105.002.31
SCT MODEL NO.	SCT-PERIDOT-31
VIEWING HEAD	SLIDING TYPE BINOCULAR HEAD, INCLINED AT 30
EYE PIECE	WF 10X, WF10X WITH RETICLE 0.1MM
OBJECTIVES	NON-STRESS INFINITY OBJECTIVES 4X, 10X, 20X, 40X
FOCUS	FINE & COARSE FOCUSING. FOCUSING INTERVAL 0.002 MM
ILLUMINATION	6V / 20 W HALOGEN LAMP
STAGE	190 MM X 140 MM, MOVING RANGE 78MM X 52MM
VOLTAGE AND POWER	UNIVERSAL VOLTAGE 85V TO 265V

ORDERING INFORMATION:

PRODUCT NO.	MODEL NO.	DESCRIPTION
SCT-105.002.31	SCT-PERIDOT-31	SCT PERIDOT-31 LAB POLARISING BIOLOGICAL MICROSCOPE IS SUPPLIED WITH MAIN BODY, BINOCULAR EYEPIECE TUBE, WF10X, NON-STRESS INFINITY OBJECTIVE 4X, NON-STRESS INFINITY OBJECTIVE 10X, NON-STRESS INFINITY OBJECTIVE 20X, NON-STRESS INFINITY OBJECTIVE 40X, QUADRUPLE NOSEPIECE, DOUBLE LAYERS MECHANICAL STAGE, 6V / 20W HALOGEN LAMP, DUST COVER, INSTRUCTION MANUAL AND READY TO USE.

218

OPTIONAL ACCESSORIES SELECT ONLY IF REQUIRED:

	EYEPIECE
SCT-105.002.31A	WF10X/20MM
SCT-105.002.31B	WF10X/18MM
SCT-105.002.31C	WF15X
SCT-105.002.31D	WF16X
SCT-105.002.31E	WF20X
SCT-105.002.31F	WF10X/18MM, FOCUS (RETICLE 0.1MM)
SCT-105.002.31G	WF10X/20MM, FOCUS (RETICLE 0.1MM)
	NON-STRESS INFINITY OBJECTIVE
SCT-105.002.31H	NON-STRESS INFINITY OBJECTIVE 4X
SCT-105.002.31I	NON-STRESS INFINITY OBJECTIVE 10X
SCT-105.002.31J	NON-STRESS INFINITY OBJECTIVE 20X
SCT-105.002.31K	NON-STRESS INFINITY OBJECTIVE 40X
	VIEWING HEAD
SCT-105.002.31L	SEIDENTOPF BINOCULAR HEAD
SCT-105.002.31M	SEIDENTOPF TRINOCULAR HEAD
	ACCESSORIES
SCT-105.002.31N	POWER CORD
SCT-105.002.31O	6V / 20W HALOGEN LAMP
SCT-105.002.31P	BLUE FILTER
SCT-105.002.31Q	GREEN FILTER
SCT-105.002.31R	YELLOW FILTER
SCT-105.002.31S	0.5X C-MOUNT
SCT-105.002.31T	1.0X C-MOUNT
SCT-105.002.31U	DRY TYPE DARK FIELD FOR 4X, 10X, 20X, 40X
SCT-105.002.31V	ADAPTOR FOR DSLR CAMERA SONY, CANON, OLYMPUS, NIKON

SCT PROFESSIONAL GRADE LAB POLARISING BIOLOGICAL MICROSCOPE

SALIENT FEATURES :

- Modern and elegant design for Professional Research Biological Lab use.
- Binocular head inclined at 30°. Dipter adjustable.
- Sliding type binocular head.
- Good for professional research polarising purposes.
- Microscope is made by good quality material and High quality optics.
- Compound biological microscope for Professional investigation.
- Coaxial coarse and fine focusing and focusing interval at 0.002 mm
- Abbe type N.A 1.25 condenser with iris diaphragm.
- Better illumination with (Kohler Type) adjustable brightness.
- 6 V / 20 Watt Halogen lamp illumination. additionally with 12 V-50 Watt Halogen Lamp reflecting illumination.
- Supplied with standard Non Stress infinite Objectives including 60 X.
- Double layer Movable mechanical Stage (190 x 140 mm) with removable slide holder (78 x 52 mm).
- Voltage: Universal AC 85 V-- 265 V.



TECHNICAL SPECIFICATIONS:

PRODUCT NO	SCT-105.002.32
SCT MODEL NO.	SCT-PERIDOT-32
VIEWING HEAD	SLIDING TYPE TRINOCULAR HEAD, INCLINED AT 30
EYE PIECE	WF 10 X, WF10X WITH RETICLE 0.1MM
OBJECTIVES	NON-STRESS INFINITY OBJECTIVES 4X, 10 X, 20 X, 40X, 60X
FOCUS	FINE & COARSE FOCUSING. FOCUSING INTERVAL 0.002 MM
ILLUMINATION	TRANSMITTED ILLUMINATION: HALOGEN LAMP (6V-20W) REFLECTING ILLUMINATION: HALOGEN LAMP (12V-50W)
STAGE	190 MM X 140 MM, MOVING RANGE 78MM X 52MM
VOLTAGE AND POWER	UNIVERSAL VOLTAGE 85V TO 265V

ORDERING INFORMATION:

PRODUCT NO.	MODEL NO.	DESCRIPTION
SCT-105.002.32	SCT-PERIDOT-32	SCT PERIDOT-32 PROFESSIONAL GRADE LAB POLARISING BIOLOGICAL MICROSCOPE IS SUPPLIED WITH MAIN BODY, TRINOCULAR EYEPIECE TUBE, WF10X, NON-STRESS INFINITY OBJECTIVE 4X, NON-STRESS INFINITY OBJECTIVE 10X, NON-STRESS INFINITY OBJECTIVE 20X, NON-STRESS INFINITY OBJECTIVE 40X, NON-STRESS INFINITY OBJECTIVE 60X, QUINTUPLE NOSEPIECE, DOUBLE LAYERS MECHANICAL STAGE, 6V / 20W HALOGEN LAMP, DUST COVER, INSTRUCTION MANUAL AND READY TO USE.

OPTIONAL ACCESSORIES SELECT ONLY IF REQUIRED:

	EYEPIECE
SCT-105.002.32A	WF10X/20MM
SCT-105.002.32B	WF10X/18MM
SCT-105.002.32C	WF15X
SCT-105.002.32D	WF16X
SCT-105.002.32E	WF20X
SCT-105.002.32F	WF10X/18MM, FOCUS (RETICLE 0.1MM)
SCT-105.002.32G	WF10X/20MM, FOCUS (RETICLE 0.1MM)
	NON-STRESS INFINITY OBJECTIVE
SCT-105.002.32H	NON-STRESS INFINITY OBJECTIVE 4X
SCT-105.002.32I	NON-STRESS INFINITY OBJECTIVE 10X
SCT-105.002.32J	NON-STRESS INFINITY OBJECTIVE 20X
SCT-105.002.32K	NON-STRESS INFINITY OBJECTIVE 40X
SCT-105.002.32L	NON-STRESS INFINITY OBJECTIVE 60X
	VIEWING HEAD
SCT-105.002.32M	SEIDENTOPF BINOCULAR HEAD
SCT-105.002.32N	SEIDENTOPF TRINOCULAR HEAD
	ACCESSORIES
SCT-105.002.32O	POWER CORD
SCT-105.002.32P	6V / 20W HALOGEN LAMP
SCT-105.002.32Q	BLUE FILTER
SCT-105.002.32R	GREEN FILTER
SCT-105.002.32S	YELLOW FILTER
SCT-105.002.32T	0.5X C-MOUNT
SCT-105.002.32U	1.0X C-MOUNT
SCT-105.002.32V	DRY TYPE DARK FIELD FOR 4X, 10X, 20X, 40X
SCT-105.002.32W	ADAPTOR FOR DSLR CAMERA SONY, CANON, OLYMPUS, NIKON

SCT MULTI-VIEWING MICROSCOPE

SALIENT FEATURES:

- Modern and elegant design
- Multi viewing (1+2) compound Biological microscope suitable for education the discussion studies
- Multi viewing Binocular head inclined at 45, Sliding type .
- Microscope is made by good quality material and High quality optics.
- Coaxial coarse and fine focusing and focusing interval at 0.002 mm
- Good for Teaching purposes and joint group investigation and studies.
- Fitted with Halogen lamp (100W) for illumination
- Supplied with standard Achromatic Objectives
- Movable Stage with the range 75 x 50 mm and the stage 140 x 140 mm.
- Voltage: AC 110 V or 230 V, DC output 6V.

TECHNICAL SPECIFICATIONS:

PRODUCT NO.	SCT-105.002.36
SCT MODEL NO.	SCT-AMETHYEST-36
VIEWING HEAD	SLIDING TYPE BINOCULAR HEAD, INCLINED AT 45
EYE PIECE	WF 10X
OBJECTIVES	ACHROMATIC 4X, 10X, 40X(S), 100X (S.OIL)
FOCUS	FINE & COARSE FOCUSING. FOCUSING INTERVAL 0.002 MM
ILLUMINATION	100 W HALOGEN LAMP
STAGE	140 MM X 140 MM, MOVING RANGE 75 MM X 50 MM
VOLTAGE AND POWER	AC 110 V OR 230 V, DC OUT PUT 6V



ORDERING INFORMATION:

PRODUCT NO.	MODEL NO.	DESCRIPTION
SCT-105.002.36	SCT-AMETHYEST-36	SCT AMETHYEST-36 MULTI-VIEWING MICROSCOPE IS SUPPLIED WITH MAIN BODY, BINOCULAR EYEPIECE TUBE, WF10X, ACHROMATIC 4X, ACHROMATIC 10X, ACHROMATIC 40X, ACHROMATIC 100X OIL, QUADRUPLE NOSEPIECE, DOUBLE LAYERS MECHANICAL STAGE, 6V / 20W HALOGEN LAMP, IMMERSION OIL A, DUST COVER, INSTRUCTION MANUAL AND READY TO USE.

OPTIONAL ACCESSORIES SELECT ONLY IF REQUIRED

	EYEPIECE
SCT-105.002.36A	WF10X
SCT-105.002.36B	WF15X
SCT-105.002.36C	WF20X
	OBJECTIVE
SCT-105.002.36D	ACHROMATIC 4X
SCT-105.002.36E	ACHROMATIC 10X
SCT-105.002.36F	ACHROMATIC 20X
SCT-105.002.36G	ACHROMATIC 40X
SCT-105.002.36H	ACHROMATIC 100X OIL
	ACCESSORIES
SCT-105.002.36I	POWER CORD TYPE BE 220-240V
SCT-105.002.36J	6V / 20W HALOGEN LAMP
SCT-105.002.36K	IMMERSION OIL A, 8CC
SCT-105.002.36L	BLUE FILTER
SCT-105.002.36M	GREEN FILTER
SCT-105.002.36N	1.0X C-MOUNT

SCT - STEREO AND INDUSTRIAL MICROSCOPES

SCT STEREO MICROSCOPE

SALIENT FEATURES:

- Simple and ergonomically designed Stereo Microscope.
- Binocular head inclined at 45. Seidentopf type binocular head.
- Microscope is made by good quality material and High quality optics.
- Stereo microscope for routine investigation and the surface studies.
- Coaxial coarse and fine focusing.
- Eye pieces : WF 10X
- Illumination with 10W Halogen Lamp for good brightness.
- Fitted with Halogen lamp (6V-10W) for illumination.
- Supplied with standard 2X and 4X Objectives
- Stage with clip, Glass plate Black / White.
- Voltage: AC 110V or 230V, DC output 6V.

TECHNICAL SPECIFICATIONS:

PRODUCT NO.	SCT-105.002.41
SCT MODEL NO.	SCT-SAPPHIRE-41
VIEWING HEAD	SEIDENTOPF TYPE BINOCULAR HEAD, INCLINED AT 45
EYE PIECE	WF 10X
OBJECTIVES	2X, 4X
FOCUS	COARSE FOCUSING.
ILLUMINATION	10 W HALOGEN LAMP
STAGE	STAGE WITH CLIP, GLASS BLACK OR WHITE PLATE
VOLTAGE AND POWER	AC 110 V OR 230 V, DC OUT PUT 6V



ORDERING INFORMATION:

PRODUCT NO.	MODEL NO.	DESCRIPTION
SCT-105.002.41	SCT-SAPPHIRE-41	SCT SAPPHIRE-41 STEREO MICROSCOPE IS SUPPLIED WITH MAIN BODY, BINOCULAR MICROSCOPY, WF10X, 2X/4X ROTATABLE LENS, DUST COVER, INSTRUCTION MANUAL AND READY TO USE.

OPTIONAL ACCESSORIES SELECT ONLY IF REQUIRED

	EYEPIECE
SCT-105.002.41A	WF5X
SCT-105.002.41B	WF10X
SCT-105.002.41C	WF15X
SCT-105.002.41D	WF20X
	ACCESSORIES
SCT-105.002.41E	POWER CORD TYPE BE 220-240V
SCT-105.002.41F	10W HALOGEN LAMP

SCT STEREO MICROSCOPE (UPPER/LOWER ILLUMINATION)

SALIENT FEATURES:

- Simple and ergonomically designed Stereo Microscope.
- Binocular head inclined at 45°. Seidentopf type binocular head.
- Microscope is made by good quality material and High quality optics.
- Stereo microscope for routine investigation and the surface studies.
- Coaxial coarse and fine focusing, With illumination
- Eye pieces : WF 10 X
- Illumination with 10 W Halogen Lamp for good brightness.
- Fitted with Halogen lamp (12V-10W) for illumination. (Upper and Lower).
- Supplied with standard 2 X and 4X Objectives
- Stage with clip, Glass plate Black / White.
- Voltage: AC 110 V or 230 V.



221

TECHNICAL SPECIFICATIONS:

PRODUCT NO.	SCT-105.002.42
SCT MODEL NO.	SCT-SAPPHIRE-42
VIEWING HEAD	SEIDENTOPF TYPE BINOCULAR HEAD, INCLINED AT 45°
EYE PIECE	WF 10 X
OBJECTIVES	2X, 4X
FOCUS	FINE & COARSE FOCUSING.
ILLUMINATION	10 W HALOGEN LAMP
STAGE	STAGE WITH CLIP, GLASS PLATE, BLACK OR WHITE PLATE
VOLTAGE AND POWER	AC 110 V OR 230 V, DC OUT PUT 6V

ORDERING INFORMATION:

PRODUCT NO.	MODEL NO.	DESCRIPTION
SCT-105.002.42	SCT-SAPPHIRE-42	SCT SAPPHIRE-42 STEREO MICROSCOPE IS SUPPLIED WITH MAIN BODY, BINOCULAR MICROSCOPY, WF10X, 2X/4X ROTATABLE LENS, 12V/10W ILLUMINATION WITH UPPER LIGHT AND LOWER LIGHT, DUST COVER, INSTRUCTION MANUAL AND READY TO USE.

OPTIONAL ACCESSORIES SELECT ONLY IF REQUIRED:

	EYEPIECE
SCT-105.002.42A	WF5X
SCT-105.002.42B	WF10X
SCT-105.002.42C	WF15X
SCT-105.002.42D	WF20X
	ACCESSORIES
SCT-105.002.42E	POWER CORD TYPE BE 220-240V
SCT-105.002.42F	10W HALOGEN LAMP

SCT ZOOM STEREO MICROSCOPE WITH LENS 0.75 - 5X

SALIENT FEATURES:

- Simple and ergonomically designed Stereo Zoom Microscope.
- Binocular head inclined at 45°. Seidentopf type binocular head.
- Microscope is made by good quality material and High quality optics.
- Stereo Zoom microscope for routine investigation and the surface studies.
- Coaxial coarse and fine focusing. Zoom lens 0.75X – 5X
- Eye pieces : WF 10X
- Illumination with 10W Halogen Lamp for good brightness.
- Fitted with Halogen lamp (6V-10W) for illumination.
- Supplied with standard 2X and 4X Objectives
- Stage with clip, Glass plate Black / White.
- Voltage: AC 110 V or 230 V, DC output 6V.

TECHNICAL SPECIFICATIONS:

PRODUCT NO.	SCT-105.002.46
MODEL NO.	SCT-SAPPHIRE-46
VIEWING HEAD	SEIDENTOPF TYPE BINOCULAR HEAD, INCLINED AT 45°
EYE PIECE	WF 10X
OBJECTIVES	2X, 4X
FOCUS	Fine & Coarse FOCUSING, Zoom lens 0.75-5x
ILLUMINATION	10 W HALOGEN LAMP
STAGE	STAGE WITH CLIP, GLASS PLATE, BLACK OR WHITE PLATE
VOLTAGE AND POWER	AC 110V OR 230V, DC OUT PUT 6V



ORDERING INFORMATION:

PRODUCT NO.	MODEL NO.	DESCRIPTION
SCT-105.002.46	SCT-SAPPHIRE-46	SCT SAPPHIRE-46 ZOOM STEREO MICROSCOPE IS SUPPLIED WITH MAIN BODY, BINOCULAR MICROSCOPY, WF10X ,ZOOM LEN RANGE: 0.75X-5X, LED ILLUMINATION WITH UPPER LIGHT AND LOWER LIGHT. DUST COVER, INSTRUCTION MANUAL AND READY TO USE.

OPTIONAL ACCESSORIES SELECT ONLY IF REQUIRED

	EYEPiece
SCT-105.002.46A	WF5X
SCT-105.002.46B	WF10X
SCT-105.002.46C	WF15X
SCT-105.002.46D	WF20X
	AUXILIARY OBJECTIVE
SCT-105.002.46E	0.5X
SCT-105.002.46F	1.5X
SCT-105.002.46G	0.75 X
	ACCESSORIES
SCT-105.002.46H	POWER CORD TYPE BE 220-240V
SCT-105.002.46I	10W HALOGEN LAMP

222

SCT ZOOM STEREO MICROSCOPE WITH 0.66-5X

SALIENT FEATURES:

- Simple and ergonomically designed Stereo Zoom Microscope.
- Binocular head inclined at 45. Seidentopf type binocular head.
- Microscope is made by good quality material and High quality optics.
- Stereo Zoom microscope for routine investigation and the surface studies.
- Coaxial coarse and fine focusing. Zoom lens 0.66X – 5X
- Eye pieces : WF 10X
- Illumination with 10W Halogen Lamp for good brightness.
- Fitted with 3 Watt Transmitting and Reflecting for illumination.
- Supplied with standard 2X and 4X Objectives
- Stage with clip, Glass plate Black / White.
- Voltage: AC 110 V or 230 V, DC output 6V.

TECHNICAL SPECIFICATIONS:

PRODUCT NO.	SCT-105.002.51
MODEL NO..	SCT-SAPPHIRE-51
VIEWING HEAD	SEIDENTOPF TYPE BINOCULAR HEAD, INCLINED AT 45
EYE PIECE	WF 10 X
OBJECTIVES	2X, 4X
FOCUS	FINE & COARSE FOCUSING, Zoom lens 0.66-5x
ILLUMINATION	10 W HALOGEN LAMP
STAGE	STAGE WITH CLIP, GLASS PLATE, BLACK OR WHITE PLATE
VOLTAGE AND POWER	AC 110 V OR 230 V, DC OUT PUT 6V



ORDERING INFORMATION:

PRODUCT NO.	MODEL NO.	DESCRIPTION
SCT-105.002.51	SCT-SAPPHIRE-51	SCT SAPPHIRE-51 ZOOM STEREO MICROSCOPE IS SUPPLIED WITH MAIN BODY, BINOCULAR MICROSCOPY, WF10X, ZOOM LEN RANGE: 0.66X-5X, REFLECTING 3W LED & TRANSMITTING 3W LED, BLACK AND WHITE PLATE, GLASS PLATE, & POWER CORD, DUST COVER, INSTRUCTION MANUAL AND READY TO USE.

OPTIONAL ACCESSORIES SELECT ONLY IF REQUIRED:

	EYEPIECE
SCT-105.002.51A	WF10X
SCT-105.002.51B	WF20X
SCT-105.002.51C	WF10X FOCUSING EYEPIECE
	AUXILIARY OBJECTIVE
SCT-105.002.51D	0.5X
SCT-105.002.51E	1.5X
SCT-105.002.51F	2 X
SCT-105.002.51G	0.75 X
	ACCESSORIES
SCT-105.002.51H	POWER CORD TYPE BE 220-240V
SCT-105.002.51I	0.35X C-MOUNT
SCT-105.002.51J	0.5X C-MOUNT
SCT-105.002.51K	0.7X C-MOUNT
SCT-105.002.51L	DSLR-CAMERA ADAPTOR (NIKON)
SCT-105.002.51M	DSLR-CAMERA ADAPTOR (CANON)
SCT-105.002.51N	DSLR-CAMERA ADAPTOR (OLYMPUS)
SCT-105.002.51O	DSLR-CAMERA ADAPTOR (SONY)

SCT PROFESSIONAL GRADE ZOOM STEREO MICROSCOPE

SALIENT FEATURES:

- Modern and elegantly designed Professional Stereo Zoom Microscope.
- Binocular head inclined at 0-30. Seidentopf type binocular head.
- Microscope is made by good quality material and High quality optics.
- Stereo Zoom microscope for professional and the surface studies.
- Coaxial coarse and fine focusing. Zoom lens 0.66X – 5X
- Eye pieces : WF 10X, Optional cold light illumination
- Supplied with standard 1X Objectives, focusing without illumination
- Stage with clip, Glass plate Black / White.
- Voltage: AC 110V or 230V, DC output 6V.

TECHNICAL SPECIFICATIONS:

PRODUCT NO.	SCT-105.002.56
MODEL NO.	SCT-SAPPHIRE-56
VIEWING HEAD	SEIDENTOPF TYPE BINOCULAR HEAD, INCLINED AT 45
EYE PIECE	WF 10X
OBJECTIVES	2X, 4X
FOCUS	Fine & Coarse FOCUSING, Zoom
ILLUMINATION	10 W HALOGEN LAMP
STAGE	STAGE WITH CILP, GLASS PLATE, Black or White PLATE
VOLTAGE AND POWER	AC 110 V OR 230V ,DC OUT PUT 6V

ORDERING INFORMATION:

PRODUCT NO.	MODEL NO.	DESCRIPTION
SCT-105.002.56	SCT-SAPPHIRE-56	SCT SAPPHIRE-56 PROFESSIONAL GRADE ZOOM STEREO MICROSCOPE IS SUPPLIED WITH MAIN BODY, 0-30 DEGREE INCLINED ADJUSTABLE VIEWING HEAD, WF10X, 1X OBJECTIVE, FOCUSING SYSTEM WITHOUT ILLUMINATION, STANDARD BASE WITHOUT ANY ILLUMINATION, DUST COVER, INSTRUCTION MANUAL AND READY TO USE.

OPTIONAL ACCESSORIES SELECT ONLY IF REQUIRED:

	EYEPIECE
SCT-105.002.56A	WF10X/23MM
SCT-105.002.56B	WF10X/23MM (RETICULE, X AXIS: 0.1MM/100 DIVISION)
SCT-105.002.56C	WF10X/23MM (RETICULE, X AXIS: 0.05MM/200 DIVISION)
SCT-105.002.56D	WF10X/23MM (GRID, X AXIS: 0.1 X 0.1MM/100 DIVISION)
SCT-105.002.56E	WF16X/14MM
SCT-105.002.56F	WF20X/12MM
SCT-105.002.56G	WF25X/9MM
SCT-105.002.56H	WF30X/8MM
	OBJECTIVE
SCT-105.002.56I	0.3X ACHROMATIC OBJECTIVE (W.D=328.93MM)
SCT-105.002.56J	0.5X ACHROMATIC OBJECTIVE (W.D=197.19MM)
SCT-105.002.56K	0.7X ACHROMATIC OBJECTIVE (W.D=148.00MM)



SCT-105.002.56L	1X ACHROMATIC OBJECTIVE (W.D=93.87MM)
SCT-105.002.56M	1X PLAN ACHROMATIC OBJECTIVE (W.D=84.92MM)
SCT-105.002.56N	1.5X ACHROMATIC OBJECTIVE (W.D=46.69MM)
SCT-105.002.56O	2X ACHROMATIC OBJECTIVE (W.D=34.04MM)
SCT-105.002.56P	2.5X ACHROMATIC OBJECTIVE (W.D=22.53MM)
IMAGE OUTPUT UNIT	
SCT-105.002.56Q	ONE SIDE IMAGE OUTPUT UNIT
SCT-105.002.56R	DOUBLE SIDES IMAGE OUTPUT UNIT
COAXIAL ILLUMINATION UNIT	
SCT-105.002.56S	1W LED ILLUMINATION UNIT
SCT-105.002.56T	SINGLE SOFT OPTICAL FIBER 5W/LED COLD LIGHT UNIT, FIBER LENGTH: 550MM, LIGHT PASSED DIAMETER: 8MM
BASE	
SCT-105.002.56U	STANDARD BASE (WITHOUT ILLUMINATION)
SCT-105.002.56V	TRANSMITTING ILLUMINATION BASE, OUTPUT: 3W/LED ADJUSTABLE COLD LIGHTING OPTICAL FIBER COLD LIGHTING UNIT 150W/HALOGEN
SCT-105.002.56W	RING SOFT OPTICAL FIBER COLD LIGHTING UNIT, FIBER LENGTH: 550MM, LIGHT PASSED DIAMETER: 8MM
SCT-105.002.56X	DOUBLE HARD OPTICAL FIBERS COLD LIGHTING UNIT, FIBER LENGTH: 550MM, LIGHT PASSED DIAMETER: 8MM
SCT-105.002.56Y	SINGLE SOFT/HARD OPTICAL FIBER COLD LIGHTING UNIT, FIBER LENGTH: 550MM, LIGHT PASSED DIAMETER: 8MM
ACCESSORIES	
SCT-105.002.56Z	POWER CORD TYPE BE 220-240V
SCT-105.002.56AA	0.35X C-MOUNT
SCT-105.002.56AB	1.0X C-MOUNT

SCT PROFESSIONAL GRADE INVERTED METALLURGICAL MICROSCOPE

SALIENT FEATURES:

- Simple and compact design.
- Professional type Inverted Metallurgical Microscope
- Trinocular head inclined at 45, seidentopf type
- Microscope is made by good quality material and High quality optics.
- Wide field Eye pieces 10X / 18 mm reticle , WF 12.5 X
- Coaxial coarse and fine focusing and focusing interval at 0.002 mm
- Good for all types of Structural and external studies.
- Fitted with Halogen lamp (6V-30W) for a better illumination
- Supplied with Metallurgical infinity Plan Objectives 10X, 20X, 40X and 100 X
- Movable Stage with plate 10 and 20 mm diameters.
- Voltage: AC 85 V to 265 V.



TECHNICAL SPECIFICATIONS:

PRODUCT NO.	SCT-105.002.61
SCT MODEL NO.	SCT-GARNET-61
VIEWING HEAD	SEIDENTOPF TYPE BINOCULAR HEAD, INCLINED AT 45
EYE PIECE	WF 10 X
OBJECTIVES	METALLURGICAL INFINITY PLAN OBJECTIVE 10X, 40X, 100X
FOCUS	FINE & COARSE FOCUSING. FOCUSING INTERVAL 0.002 MM
ILLUMINATION	6V / 30 W HALOGEN LAMP
VOLTAGE AND POWER	UNIVERSAL VOLTAGE 85V TO 265V

ORDERING INFORMATION:

PRODUCT NO.	MODEL NO.	DESCRIPTION
SCT-105.002.61	SCT-GARNET-61	SCT GARNET-61 PROFESSIONAL GRADE INVERTED METALLURGICAL MICROSCOPE IS SUPPLIED WITH MAIN BODY, B1 TRINOCULAR VIEWING HEAD, WF10X/18MM, WF12.5X , WF10X WITH RETICULE, OBJECTIVE 10X, OBJECTIVE 20X, OBJECTIVE 40X, OBJECTIVE 100X, MECHANICAL STAGE WITH PLATE 10MM DIAMETER & PLATE 20MM DIAMETER, POLARIZATION KIT, INCLUDING POLARIZING SLIDE & ANALYZING SLIDE, 6V/30W HALOGEN LAMP. DUST COVER, INSTRUCTION MANUAL AND READY TO USE.

OPTIONAL ACCESSORIES SELECT ONLY IF REQUIRED

	EYEPIECE
SCT-105.002.61A	WF10X/18MM
SCT-105.002.61B	WF10X/18MM WITH RETICULE 0.1MM
SCT-105.002.61C	WF10X/20MM
SCT-105.002.61D	WF12.5X
SCT-105.002.61E	WF16X
	METALLURGICAL PLAN OBJECTIVE
SCT-105.002.61F	METALLURGICAL PLAN OBJECTIVE 2.5X
SCT-105.002.61G	METALLURGICAL PLAN OBJECTIVE 4X
SCT-105.002.61H	METALLURGICAL PLAN OBJECTIVE 10X

SCT-105.002.61I	METALLURGICAL PLAN OBJECTIVE 20X
SCT-105.002.61J	METALLURGICAL PLAN OBJECTIVE 40X
SCT-105.002.61K	METALLURGICAL PLAN OBJECTIVE 100X
ACCESSORIES	
SCT-105.002.61L	POWER CORD TYPE BE - 220 - 240V
SCT-105.002.61M	6V / 20W HALOGEN LAMP
SCT-105.002.61N	IMMERSION OIL A, 8CC
SCT-105.002.61O	BLUE FILTER
SCT-105.002.61P	GREEN FILTER
SCT-105.002.61Q	YELLOW FILTER
SCT-105.002.61R	1.0X C-MOUNT
SCT-105.002.61S	PLATE 10MM DIAMETER ON MECHANICAL STAGE
SCT-105.002.61T	PLATE 20MM DIAMETER ON MECHANICAL STAGE
SCT-105.002.61U	PLATE 30MM DIAMETER ON MECHANICAL STAGE

SCT COMPOUND METALLURGICAL MICROSCOPE

SALIENT FEATURES:

- Modern and elegant design for Research Metallurgical Lab use.
- Binocular head inclined at 30. Dipter adjustable.
- Seidentopf type binocular head.
- Microscope is made by good quality material and High quality optics.
- Compound Metallurgical microscope for Professional investigation.
- Wide field Eye pieces 10X .
- Coaxial coarse and fine focusing and focusing interval at 0.002 mm
- Abbe type N.A 1.25 condenser with iris diaphragm.
- Better illumination with good brightness.
- 6 V / 20 Watt Halogen lamp illumination.
- Supplied with standard Metallurgical infinite Plan Achromatic Objectives 4X, 10X with LWD metallurgical 40X objective.
- Movable mechanical Stage (142 x 134 mm) with removable slide holder (76 x 50 mm).
- Voltage: Universal AC 85 V - 265 V.



TECHNICAL SPECIFICATIONS:

PRODUCT NO.	SCT-105.002.66
SCT MODEL NO.	SCT-JADE-66
VIEWING HEAD	SEIDENTOPF TYPE BINOCULAR HEAD, INCLINED AT 30
EYE PIECE	WF 10 X
OBJECTIVES	METALLURGICAL INFINITY PLAN OBJECTIVE 4X, 10XLWD METALLURGICAL INFINITY PLAN OBJECTIVE 40X
FOCUS	FINE & COARSE FOCUSING. FOCUSING INTERVAL 0.002 MM
ILLUMINATION	6V / 20 W HALOGEN LAMP
STAGE	142 MM X 134 MM MOVING RANGE 76 MM X 50 MM
VOLTAGE AND POWER	UNIVERSAL VOLTAGE 85V TO 265V

ORDERING INFORMATION:

PRODUCT NO.	MODEL NO.	DESCRIPTION
SCT-105.002.66	SCT-JADE-66	SCT JADE-66 METALLURGICAL MICROSCOPE IS SUPPLIED WITH MAIN BODY, BINOCULAR VIEWING HEAD, WF10X/18MM, WF10X/18MM WITH RETICULE 0.1MM, METALLURGICAL INFINITY PLAN OBJECTIVE 4X, METALLURGICAL INFINITY PLAN OBJECTIVE 10X, LWD METALLURGICAL INFINITY PLAN OBJECTIVE 40X, QUADRUPLE NOSEPIECE, 6V/20W HALOGEN LAMP. DUST COVER, INSTRUCTION MANUAL AND READY TO USE.

OPTIONAL ACCESSORIES SELECT ONLY IF REQUIRED

	EYEPIECE
SCT-105.002.66A	WF10X/18MM
SCT-105.002.66B	WF10X/18MM WITH RETICULE 0.1MM
SCT-105.002.66C	WF5X
SCT-105.002.66D	WF12.5X
SCT-105.002.66E	WF16X
	METALLURGICAL INFINITY PLAN OBJECTIVE
SCT-105.002.66F	METALLURGICAL INFINITY PLAN OBJECTIVE 4X
SCT-105.002.66G	METALLURGICAL INFINITY PLAN OBJECTIVE 10X
SCT-105.002.66H	METALLURGICAL INFINITY PLAN OBJECTIVE 20X
SCT-105.002.66I	METALLURGICAL INFINITY PLAN OBJECTIVE 40X
	LWD METALLURGICAL INFINITY PLAN OBJECTIVE
SCT-105.002.66J	LWD METALLURGICAL INFINITY PLAN OBJECTIVE 20X
SCT-105.002.66K	LWD METALLURGICAL INFINITY PLAN OBJECTIVE 40X
SCT-105.002.66L	LWD METALLURGICAL INFINITY PLAN OBJECTIVE 50X
SCT-105.002.66M	LWD METALLURGICAL INFINITY PLAN OBJECTIVE 80X

	ACCESSORIES
SCT-105.002.66N	POWER CORD TYPE - 220 - 240V
SCT-105.002.66O	6V / 20W HALOGEN LAMP
SCT-105.002.66P	IMMERSION OIL A, 8CC
SCT-105.002.66Q	BLUE FILTER
SCT-105.002.66R	GREEN FILTER
SCT-105.002.66S	YELLOW FILTER
SCT-105.002.66T	1.0X C-MOUNT

SCT INVERTED METALLURGICAL MICROSCOPE

SALIENT FEATURES:

- Modern and elegant design for Metallurgical Lab use.
- Binocular head inclined at 45. Dipter adjustable.
- Seidentopf type binocular head.
- Microscope is made by good quality material and High quality optics.
- Inverted Metallurgical microscope for Professional investigation.
- Wide field Eye pieces 10X / 18 mm.
- Coaxial coarse and fine focusing and focusing interval at 0.002 mm
- Better illumination with good brightness.
- 6 V / 20 Watt Halogen lamp illumination.
- Supplied with standard Metallurgical infinite Plan Objectives 10 X,40X , and 100X objective.
- Movable mechanical Stage (180 x 195 mm) with removable slide holder (30 x 30 mm).
- Voltage: Universal AC 85V - 265V.



TECHNICAL SPECIFICATIONS:

PRODUCT NO.	SCT-105.002.67
SCT MODEL NO.	SCT-JADE-67
VIEWING HEAD	SEIDENTOPF TYPE BINOCULAR HEAD, INCLINED AT 45
EYE PIECE	WF 10 X
OBJECTIVES	METALLURGICAL INFINITY PLAN OBJECTIVE 10X, 40X, 100X
FOCUS	FINE & COARSE FOCUSING. FOCUSING INTERVAL 0.002 MM
ILLUMINATION	6V / 20 W HALOGEN LAMP
STAGE	180 MM X 195 MM MOVING RANGE 30 MM X 30 MM
VOLTAGE AND POWER	UNIVERSAL VOLTAGE 85V TO 265V

ORDERING INFORMATION:

PRODUCT NO.	MODEL NO.	DESCRIPTION
SCT-105.002.67	SCT-JADE-67	SCT JADE-67 INVERTED METALLURGICAL MICROSCOPE SUPPLIED WITH MAIN BODY, BINOCULAR VIEWING HEAD, WF10X/18MM, METALLURGICAL INFINITY PLAN OBJECTIVE 10X, METALLURGICAL INFINITY PLAN OBJECTIVE 40X,METALLURGICAL INFINITY PLAN OBJECTIVE 100X,MECHANICAL STAGE WITH PLATE 10MM DIAMETER, QUADRUPLE NOSEPIECE, 6V/20W HALOGEN LAMP. DUST COVER, INSTRUCTION MANUAL AND READY TO USE.

OPTIONAL ACCESSORIES SELECT ONLY IF REQUIRED:

	EYEPIECE
SCT-105.002.67A	WF10X/18MM
SCT-105.002.67B	WF10X/18MM WITH RETICULE 0.1MM
SCT-105.002.67C	WF10X/20MM
SCT-105.002.67D	WF12.5X
SCT-105.002.67E	WF16X
	METALLURGICAL PLAN OBJECTIVE
SCT-105.002.67F	METALLURGICAL PLAN OBJECTIVE 2.5X
SCT-105.002.67G	METALLURGICAL PLAN OBJECTIVE 4X
SCT-105.002.67H	METALLURGICAL PLAN OBJECTIVE 10X
SCT-105.002.67I	METALLURGICAL PLAN OBJECTIVE 20X
SCT-105.002.67J	METALLURGICAL PLAN OBJECTIVE 40X
SCT-105.002.67K	METALLURGICAL PLAN OBJECTIVE 100X
	ACCESSORIES
SCT-105.002.67L	POWER CORD TYPE - BE 220 TO 240V
SCT-105.002.67M	6V / 20W HALOGEN LAMP
SCT-105.002.67N	IMMERSION OIL A, 8CC
SCT-105.002.67O	BLUE FILTER
SCT-105.002.67P	GREEN FILTER
SCT-105.002.67Q	YELLOW FILTER
SCT-105.002.67R	1.0X C-MOUNT
SCT-105.002.67S	PLATE 10MM DIAMETER ON MECHANICAL STAGE
SCT-105.002.67T	PLATE 20MM DIAMETER ON MECHANICAL STAGE
SCT-105.002.67U	PLATE 30MM DIAMETER ON MECHANICAL STAGE

PROFESSIONAL GRADE METALLURGICAL COMPOUND MICROSCOPE

SALIENT FEATURES :

- Modern and elegant design for Research & Professional Metallurgical Lab use.
- Trinocular head inclined at 30. Dipter adjustable.
- Seidentopf type binocular head.
- Microscope is made by good quality material and High quality optics.
- Compound Metallurgical microscope for Professional investigation.
- Wide field Eye pieces 10X .
- Coaxial coarse and fine focusing and focusing interval at 0.002 mm
- Better illumination with good brightness.
- 24 V / 100 Watt Halogen lamp illumination.
- Supplied with standard Metallurgical infinite Plan Achromatic 5X (for bright field), 10X, 20X (for bright and dark field), 50X ,100X (for bright field) metallurgical objectives.
- Movable mechanical Stage (142 x 134 mm) with removable slide holder (76 x 50 mm).
- Voltage: Universal AC 85 V - 265 V.



TECHNICAL SPECIFICATIONS:

PRODUCT NO.	SCT-105.002.71
SCT MODEL NO.	SCT-JADE-71
VIEWING HEAD	SEIDENTOPF TYPE TRINOCULAR HEAD, INCLINED AT 30
EYE PIECE	WF 10X
OBJECTIVES	INFINITY PLAN ACHROMATIC OBJECTIVE 5X, FOR BRIGHT FIELD
	INFINITY PLAN ACHROMATIC OBJECTIVE 10X, FOR BRIGHT FIELD & DARK FIELD
	INFINITY PLAN ACHROMATIC OBJECTIVE 20X, FOR BRIGHT FIELD & DARK FIELD
	INFINITY PLAN ACHROMATIC OBJECTIVE 50X, FOR BRIGHT FIELD
	INFINITY PLAN ACHROMATIC OBJECTIVE 100X, FOR BRIGHT FIELD
FOCUS	FINE & COARSE FOCUSING.
	FOCUSING INTERVAL 0.002 MM
ILLUMINATION	24V/100W HALOGEN LAMP AS INCIDENT LIGHT
VOLTAGE AND POWER	UNIVERSAL VOLTAGE 85V TO 265V

ORDERING INFORMATION:

PRODUCT NO.	MODEL NO.	DESCRIPTION
SCT-105.002.71	SCT-JADE-71	SCT JADE-71 PROFESSIONAL GRADE METALLURGICAL MICROSCOPE SUPPLIED WITH MAIN BODY, TRINOCULAR VIEWING HEAD, EX10X/22MM, INFINITY PLAN ACHROMATIC OBJECTIVE 5X, FOR BRIGHT FIELD, INFINITY PLAN ACHROMATIC OBJECTIVE 10X, FOR BRIGHT FIELD & DARK FIELD, INFINITY PLAN ACHROMATIC OBJECTIVE 20X, FOR BRIGHT FIELD & DARK FIELD, INFINITY PLAN ACHROMATIC OBJECTIVE 50X, FOR BRIGHT FIELD, INFINITY PLAN ACHROMATIC OBJECTIVE 100X, FOR BRIGHT FIELD, QUINTUPLE NOSEPIECE, 24V/100W HALOGEN LAMP AS INCIDENT LIGHT. DUST COVER, INSTRUCTION MANUAL AND READY TO USE.

OPTIONAL ACCESSORIES SELECT ONLY IF REQUIRED:

	EYEPiece
SCT-105.002.71A	WF10X/18MM
	METALLURGICAL PLAN OBJECTIVE
SCT-105.002.71B	INFINITY PLAN ACHROMATIC OBJECTIVE 5X, FOR BRIGHT FIELD
SCT-105.002.71C	INFINITY PLAN ACHROMATIC OBJECTIVE 10X, FOR BRIGHT FIELD
SCT-105.002.71D	INFINITY PLAN ACHROMATIC OBJECTIVE 40X, FOR BRIGHT FIELD
SCT-105.002.71E	INFINITY PLAN ACHROMATIC OBJECTIVE 50X, FOR BRIGHT FIELD
SCT-105.002.71F	INFINITY PLAN ACHROMATIC OBJECTIVE 100X, FOR BRIGHT FIELD
SCT-105.002.71G	INFINITY PLAN ACHROMATIC OBJECTIVE 10X, FOR BRIGHT FIELD & DARK FIELD
SCT-105.002.71H	INFINITY PLAN ACHROMATIC OBJECTIVE 20X, FOR BRIGHT FIELD & DARK FIELD
SCT-105.002.71I	INFINITY PLAN ACHROMATIC OBJECTIVE 40X, FOR BRIGHT FIELD & DARK FIELD
SCT-105.002.71J	INFINITY PLAN ACHROMATIC OBJECTIVE 50X, FOR BRIGHT FIELD & DARK FIELD
	ACCESSORIES
SCT-105.002.71K	POWER CORD TYPE BE 220 - 240V
SCT-105.002.71L	6V / 20W HALOGEN LAMP
SCT-105.002.71M	IMMERSION OIL A, 8CC
SCT-105.002.71N	BLUE FILTER
SCT-105.002.71O	GREEN FILTER
SCT-105.002.71P	YELLOW FILTER
SCT-105.002.71Q	POLARIZATION KIT, INCLUDING POLARIZING SLIDE & ANALYZING SLID
SCT-105.002.71R	1.0X C-MOUNT
SCT-105.002.71S	0.5X C-MOUNT

* All our SCT- microscope models cover most of the application required in any basic and research labs However, if you need any specific application which is not listed in our range please contact us

ScichemTech - SCT[®] - SPECTROPHOTOMETERS

In the ever fast growing scientific world, Spectrophotometry is one of the important tools used in various fields of applications like CHEMISTRY, PHYSICS, MOLECULAR BIOLOGY, MATERIAL SCIENCE, MEDICAL BIO-CHEMISTRY, NANO TECHNOLOGY etc and used for the measurement of transmittance or reflectance of solutions, transparent or opaque solids, such as polished glass or gases. In ScichemTech, we clearly understood the concept and need of spectrophotometry and manufacturing many models from the single beam double beam scanning and nano spectrophotometers. We have released different main models ALPHA, BETA, GAMMA AND OMEGA

As many of you may aware, SPECTROPHOTOMETER is an instrument used to measure the “intensity of light” using Beer-Lambert Law and it consists of three main sections SPECTROMETER –PHOTOMETER & A DETECTOR where light is being produced, measured and measured values are detected & displayed. ScichemTech gives much attention in these sections while designing and manufacturing our Spectrophotometers. Our Production & quality control department ensures, wide range of Wavelengths (190-1100 nm), wave length accuracy, good Spectral bandwidth (0.3 - 2 nm), quality optical system (grating 1200 lines/ mm), precise photo accuracy and range (0-200% T), quality & precise photodiode detectors and with clear LED display to see the results moreover, all our models and spectrophotometers are designed with USB port for the data transfer and our softwares are made user friendly and easy to understand our Spectrophotometers are easily comparable with many world's leading brands.

Aiming the scientific markets needs, we have released all our models without any compromise in the quality..we have used all the world's most advanced & quality controlled components. All our instruments are individually tested, verified, calibrated and released to the market, we have sold many thousand of units already in the market. Our range of spectrophotometer covers all the applications from the basic school Labs till advanced Research Labs. In the following pages you will find the all the ScichemTech's (SCT) basic to advance models with detailed specifications.

We are very much sure that all our sepctrophotometric models covers all the application required in the modern scientific world

SCICHEMTECH SPECTROPHOTOMETER DETAILS

SCT MODEL NO	PRODUCT NO.	OPTICAL SYSTEM	LAMP TYPE	WAVELENGTH RANGE	SPECTRAL BAND WIDTH	APPLICATIONS
SCT-ALPHA-1	SCT-105.003.01	Single Beam	Tungsten Lamp	325-1000 nm	4 nm	Educational & Training
SCT-ALPHA-2	SCT-105.003.02		Tungsten Lamp	325-1000 nm	4 nm	
SCT-ALPHA-3	SCT-105.003.03		Tungsten Lamp	320-1100 nm	4nm	
SCT-ALPHA-4	SCT-105.003.04		Tungsten & Deuterium Lamp	200-1000 nm	4 nm	
SCT-ALPHA-5	SCT-105.003.05		Tungsten & Deuterium Lamp	200--1000 nm	4 nm	
SCT-ALPHA-6	SCT-105.003.06		Tungsten Lamp	320-1100 nm	4 nm	Chemistry & Q/C Lab
SCT-ALPHA-7	SCT-105.003.07		Tungsten & Deuterium Lamp	190-1100 nm	4 nm	
SCT-ALPHA-8	SCT-105.003.08		Tungsten Lamp	325-1100 nm	2 nm	
SCT-ALPHA-9	SCT-105.003.09		Tungsten & Deuterium Lamp	190-1100 nm	2 nm	
SCT-BETA-1	SCT-105.003.10	Single Beam, scanning function	Tungsten & Deuterium Lamp	190-1100 nm	4 nm	Bio-Chemical / Pharmaceutical Labs
SCT-BETA-2	SCT-105.003.11		Tungsten & Deuterium Lamp	190-1100 nm	2 nm	
SCT-BETA-3	SCT-105.003.12		Tungsten & Deuterium Lamp	190-1100 nm	1.8 nm	
SCT-BETA-4	SCT-105.003.13		Tungsten & Deuterium Lamp	190-1100 nm	0.5,1,2,4 nm	
SCT-BETA-5	SCT-105.003.14		Tungsten & Deuterium Lamp	190-1100 nm	1 nm	
SCT-GAMMA-1	SCT-105.003.15	Double Beam Scanning	Tungsten & Deuterium Lamp	190-1100 nm	1.8 nm	
SCT-GAMMA-2	SCT-105.003.16		Tungsten & Deuterium Lamp	190-1100 nm	1 nm	
SCT-GAMMA-3	SCT-105.003.17		Tungsten & Deuterium Lamp	190-1100 nm	0.5,1,2,4 nm	

* All our SCT-Spectrophotometers are "CE" safety certified.

* We reserve the rights to change the specifications without prior notice due to quality improvement.

* Please refer pages 242 till 247 for our SCT - Special Photometers

ScichemTech - SCT[®] SPECTROPHOTOMETERS

SCT-ALPHA-1, 2, 3 VISIBLE RANGE SPECTROPHOTOMETERS

SCT-ALPHA-1 & 2, 3 are the basic models in the SCT range, which uses manual wavelength setting. This is manufactured to meet the customers budget, but no compromise in the performance (or) the quality. It can be mainly used for any basic and general spectrophotometric analysis in the range of (325-1000nm)

SALIENT FEATURES :

- Simple and elegant design.
- Auto Zero and Blank.
- Digital wavelength settings and can be viewed in the screen.
- Large sample compartment, it can accommodate 5-100 mm path length cuvettes with optional holders.
- High quality silicon photometric diode detector and 1200 lines/mm grating ensure high accuracy and precision.
- Pre-aligned design ensure the user can change lamp conveniently.
- Large LCD Screen (128*64Dots).
- Optional software PC software SCT Professional based on Windows can expand the applications to Standard Curve & Kinetics.
- Parallel port, printing directly.



FIELD OF APPLICATIONS :

School / Colleges / Basic Educational Inst. / For General Analysis / Training Purposes

TECHNICAL SPECIFICATIONS :

PARTIAL UV & VISIBLE			
PRODUCT NO.	SCT-105.003.01	SCT-105.003.02	SCT-105.003.03
SCT MODEL NO.	SCT - ALPHA - 1	SCT-ALPHA - 2	SCT-ALPHA - 3
Wavelength Range	325-1000 nm	325 - 1000 nm	320 - 1100 nm
Spectral Bandwidth	4 nm	4 nm	4 nm
Optical System	Single Beam, Grating 1200 lines/mm	Single Beam - Grating 1200 lines/mm	Single Beam - Grating 1200 lines/mm
Wavelength Accuracy	±2 nm	± 2 nm	± .5 nm
Wavelength Repeatability	1nm	0.8 nm	0.3 nm
Photometric Accuracy	≤±0.5%T or ±0.003A@1A	≤ 0.5% T or 0.003A @ 1A	≤ 0.5% T or 0.003A @ 1A
Photometric Range	0-200%T , -0.3 - 3A .0-1999 Conc.	0-200%T , -0.3 - 3A .0-9999 Conc.	-0.3 - 3A, 0-200%T, 0-9999 Conc.
Stray Light	0.3%T	0.3% T	≤ 0.05% T@ 360 nm
Stability	±0.004A/h ±500 nm	± 0.002 A/h @ 500 nm	± 0.002 A/h @ 500 nm
Display	128*64 LCD	Large 128*64 LCD	Large 128*64 LCD
Photometric Mode	T,A,C,F	--	--
Detector	Silicon Photo Diode	Silicon Photo Diode	--
Standard Cell Holder	4-position 10mm cell changer	4 Position 10 mm	4 Position 10 mm
Sample Compartment	Standard 10mm pathlength cuvette	Standard 10mm pathlength cuvette	Standard 10mm pathlength cuvette
Light Source	Tungsten lamp	Tungsten Lamp	Tungsten Lamp
Output	USB Port & Parallel Port (printer)	USB Port & Parallel Port (printer)	USB Port & Parallel Port (printer)
Power Requirement	AC 85V~265V 50/60Hz	AC 110/220V 50/60Hz	AC 110/220V 50/60Hz
Dimensions(W*D*H)	480 x 360 x 160mm	470 x 370x 180 mm	470 x 370x 180 mm
Weight	10 Kg	12 Kg	12 Kg

ORDERING INFORMATIONS :

PRODUCT NO.	MODEL NO.	DESCRIPTION
SCT-105.003.01	SCT-ALPHA-1	SCT-ALPHA-1 Visible Spectrophotometer supplied complete with Glass Cuvette, User CD, Dust Cover & Manual, UK Plug, AC85V-265V 50/60 Hz.
SCT-105.003.02	SCT-ALPHA-2	SCT-ALPHA-2 Visible Spectrophotometer supplied complete with Glass Cuvette, User CD, Dust Cover & Manual, UK Plug, AC110/220V, 50/60 Hz.
SCT-105.003.03	SCT-ALPHA-3	SCT-ALPHA-3 Visible Spectrophotometer supplied complete with Glass Cuvette, User CD, Dust Cover & Manual, UK Plug, AC110/220V, 50/60 Hz.

SCT-ALPHA - 4 & 5 UV-VISIBLE RANGE SPECTROPHOTOMETERS

SCT-ALPHA Models are designed to wider range of wave length from 200-1000 nm. Customers can perform quantitative analysis and in these models you can perform the standard curve, which can be displayed on the large LCD Screen. Using these economic and cost effective models, you can carryout many basic analysis suitable for Educational to QC Labs.

SALIENT FEATURES :

- Compact and Elegant design
- Auto wavelength setting. (200-1000nm)
- Large sample compartment, it can accommodate 5-100mm path length cuvettes with optional holders. A variety of optional accessories are available. (Please see optional accessories section)
- High Quality Silicon Photometric diode detector and 1200 lines /mm grating ensures high precision and accuracy.
- Pre-aligned design makes it convenient to change lamps.
- Large LCD screen (128*64 Dots).
- Tungsten lamp & Deuterium lamp can be turned on/off individually to extend lifetime.
- System can also save the test results. Total 200 groups of data and 100 standard curves can be saved; it is convenient for check and reload.
- Can display total 50 groups of data, 3 groups per screen. Can display standard curve and the curve equation.
- Data can be restored after a sudden power cut or any disturbance
- The optional application software SCT Professional provides complete control of the spectrophotometer through the Built-in USB port.



FIELD OF APPLICATIONS :

Higher Colleges / Tech Institutes / Chemistry Labs / Bio-Tech Labs / Factory QC Labs

TECHNICAL SPECIFICATIONS :

UV VISIBLE		
PRODUCT NO.	SCT-105.003.04	SCT-105.003.05
SCT MODEL NO.	SCT-ALPHA-4	SCT-ALPHA-5
Wavelength Range	200-1000 nm	
Spectral Bandwidth	4nm	
Optical System	Single Beam , Grating 1200 lines/mm	
Wavelength Accuracy	±2nm	
Wavelength Repeatability	1 nm	0.8 nm
Photometric Accuracy	≤±0.5%T or ±0.003A@1A	
Photometric Range	0-200%T , -0.3 - 3A ,0-9999 Conc	
Stray Light	0.3%T	
Stability	±0.002A/h @500 nm	
Detector	Silicon Photo Diode	
Standard Cell Holder	4-position 10mm cell changer	
Sample Compartment	Standard 10mm pathlength cuvette	
Light Source	Tungsten & Deuterium lamp	
Output	USB Port & Parallel Port (printer)	
Power Requirement	AC 110/220V 50/60 Hz	
Dimensions(W*D*H)	470*370*180 mm	
Weight	14 kg	

ORDERING INFORMATION :

PRODUCT NO.	MODEL NO.	DESCRIPTION
SCT-105.003.04	SCT-ALPHA-4	SCT-ALPHA-4 - UV-Visible Spectrophotometer supplied complete with Glass Cuvette, Quartz Cuvette, User CD, Dust Cover & Manual, UK Plug, AC 110/220V 50/60Hz
SCT-105.003.05	SCT-ALPHA-5	SCT-ALPHA-5 - UV-Visible Spectrophotometer supplied complete with Glass Cuvette, Quartz Cuvette, User CD, Dust Cover & Manual, UK Plug, AC 110/220V 50/60Hz

SCT-ALPHA-6 / 7 / 8 & 9 VISIBLE & UV-VISIBLE RANGE SPETROPHOTOMETERS

SCT - ALPHA 6 / 7 / 8 & 9 - models have been designed to cater the enduser's wide range of application with minimal cost. These models are categorised with UV - visible and 2 nm. Spectral bandwidth both tungsten & deuterium lamps (ALPHA - 7+9) and visible and 4 nm Tungsten Lamp only (ALPHA 6+8). These models have inbuilt keypad for quick operations. Customers can perform BASIC PHOTOMETRY, STANDARD CURVES, CO-EFFICIENT & KINETICS with ALPHA 6, 7, 8 & 9. In the below sections you will find many salient features of these models.

SALIENT FEATURES :

- Compact and modern design
- Automatic wavelength setting
- Large sample compartment, it can accommodate 5-100mm path length cuvettes with optional holders. A variety of optional accessories are available.
- Pre-aligned design makes it convenient to change lamps.
- Large LCD screen (128*64 Dots).
- Tungsten lamp & Deuterium lamp can be turned on/off individually to extend lifetime.
- System can also save the test results, total 200 groups of data 100 standard curves can be saved in the RAM. Convenient for check and reload.
- Operates with 4 - modes viz.: Basic / Quantitative / Kinetics / Utilities.
- The optional application software SCT-Professional provides complete control of the spectrophotometer from a computer through the Built-in USB port. It can expand to the following functions: Quantitative, Kinetics, Wavelength Scan, Multi-wavelength & DNA/Protein Test.



FIELD OF APPLICATIONS :

* Bio-Chemistry Research Labs / Forensic Labs / Food Quality Control Labs / Bio-Tech Labs & Universities / Advanced Educational Institutes

TECHNICAL SPECIFICATIONS :

VISIBLE			UV VISIBLE	
PRODUCT NO.	SCT-105.003.06	SCT-105.003.08	SCT-105.003.07	SCT-105.003.09
SCT MODEL NO.	SCT-ALPHA-6	SCT-ALPHA-8	SCT-ALPHA-7	SCT-ALPHA-9
Wavelength Range	320-1100 nm		190-1100 nm	
Spectral Bandwidth	4 nm	2 nm	4 nm	2 nm
Optical System	Single Beam, Grating 1200 lines/mm			
Wavelength Accuracy	±0.5 nm			
Wavelength Repeatability	0.3 nm			
Photometric Accuracy	±0.5%T or ±0.003A@1A			
Photometric Range	0-200%T , -0.3 - 3A ,0-9999 Conc			
Stray Light	≤0.05%T@360 nm		≤0.05%T@220, 360 nm	
Stability	±0.002A/h @500 nm			
Display	Graphic LCD (128*64 dots)			
Keyboard	22 Membrane keypad			
Standard Cell Holder	Standard 10mm pathlength cuvette			
Sample Compartment	4-position 10mm cell changer			
Light Source	Tungsten lamp		Tungsten & Deuterium lamp	
Output	USB Port & Parallel Port (printer)			
Power Requirement	AC 110/220V 50/60 Hz			
Dimensions(W*D*H)	470*370*180 mm			
Weight	12 Kg		14 Kg	

ORDERING INFORMATIONS :

PRODUCT NO.	MODEL NO.	DESCRIPTION
SCT-105.003.06	SCT-ALPHA-6	SCT-ALPHA-6 - Visible Spectrophotometer supplied complete with Glass Cuvette, Quartz Cuvette, User CD, Dust Cover & Manual, Printer Cable, USB, UK Plug, AC110/220V-50/60 Hz.
SCT-105.003.07	SCT-ALPHA-7	SCT-ALPHA-7 - UV Visible Spectrophotometer supplied complete with Glass Cuvette, Quartz Cuvette, User CD, Dust Cover & Manual, Printer Cable, USB, UK Plug, AC110/220V-50/60 Hz.
SCT-105.003.08	SCT-ALPHA-8	SCT-ALPHA-8 - Visible Spectrophotometer supplied complete with Glass Cuvette, Quartz Cuvette, User CD, Dust Cover & Manual, Printer Cable, USB, UK Plug, AC110/220V-50/60 Hz.
SCT-105.003.09	SCT-ALPHA-9	SCT-ALPHA-9 - UV Visible Spectrophotometer supplied complete with Glass Cuvette, Quartz Cuvette, User CD, Dust Cover & Manual, Printer Cable, USB, UK Plug, AC110/220V-50/60 Hz.

SCT-ALPHA- 6 / 8 - 7 / 9 SERIES BUILT-IN SOFTWARE

ALPHA Series in-built software is professionally made as a user friendly. It has 4 - models, viz. Basic (Photometry) analysis, Quantitative analysis, Kinetics analysis and system utility analysis.

Using - Main Menu - as illustrated in the Pic-1, you can move between the 4 - different modes, using cursors. Enter key can be used to select and open the specific mode / interface. The time and date will be also displayed. You can select between Basic / Quantitative / Kinetics / Utilities.

<input checked="" type="checkbox"/> Basic Mode	
<input type="checkbox"/> Quantitative Mode	
<input type="checkbox"/> Kinetics Mode	Time: 08.20
<input type="checkbox"/> System Utilities Mode	Date: 10/01

Pic - 1 - MAIN MENU

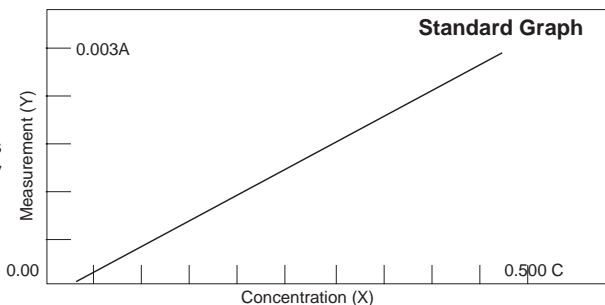
As shown in Pic-2 in BASIC MODE, you can read Absorbance (A), Transmittance (T) for measuring the concentration of the solutions. The results will be displayed 5 groups per screen and totally 200 groups datas displayed and saved. Absorbance mainly used in Analytical Chemistry Labs. Here, wave length (T), plotted against Absorbance.

595 nm	Brilliant Blue Dye	0.001A
Sample No.	Wave Length nm	Absorbance
1.	240	0.001
2.	350	0.000
3.	460	0.002
4.	505	0.003
5.	540	0.004
6.	650	0.005
7.	740	0.006
8.	820	0.007

Pic - 2 - Absorbance (OD)

IN PIC-3, YOU WILL FIND QUANTITATIVE MODE :

When the user's wants to find out the concentration of any unknown solutions using this mode, you can perform any standard curves, and you can directly incorporate the known co-efficient $K \cdot a + b$ and test your unknown samples.

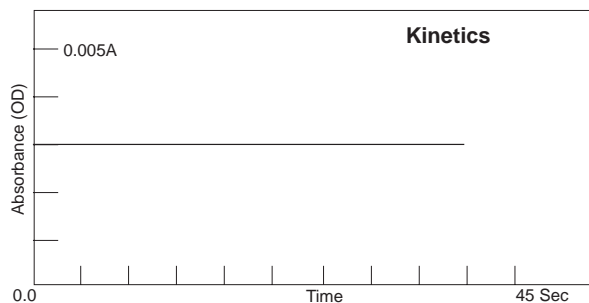


Pic - 3 - A Typical Standard Curve

KINETICS MODE :

In this mode, as illustrated in Pic-4, you will be useful to findout the rate of reaction (or) time of reaction.

The absorbance Vs Time can be plotted using this mode for Kinetic Studies. The result of each analysis will be displayed on the LED screen and upto 1000 data can be recorded. This is only of the important parameter in studying time based reactions in the QC Labs.



Pic - 4 - Kinetics

SYSTEM UTILITY MODE:

In any spectrophotometer the life of the Lamps and power usage must be controlled. Using this mode, you can switch on/off the Lamps and even printers if the user has connected. This will save the life of lamps and the operational costs.

Utility	
<input checked="" type="radio"/> D2 Lamp	On/Off
<input type="radio"/> W Lamp	On/Off
<input type="radio"/> Printer	

Pic - 5 - System Utility

SCT-BETA SERIES SCANNING SPECTROPHOTOMETERS SINGLE BEAM (1 / 2 / 3 / 4 & 5)

SCT-BETA Series has 5 - different models, which were manufactured mainly for the advanced users with many options. All the models are single beam scanning Spectrophotometers. These models covers wide wave length range (190-1100 nm), Wave length Scan, Spectral bandwidth from 1.0 to 4.0 nm. These are highly competitive and customer can choose different options, based on their need.

We have been marketing with two type of versions.

1. Standard - Stand alone, version with standard built-in software.
2. PC version, comes with SCT-UV VIS analyst windows software. (Specification as per the table).

Standard versions can be upgraded later, if the customer wants to analyse the data using external PC or Laptop.



SALIENT FEATURES :

- Modern and Ergonomic Design
- Fixed or variable slits (bandwidths), Single beam
- Sealed, solvent-resistant tactile keypad with alpha-numeric entry for file names and units.
- Large sample compartment
- Pre-aligned deuterium lamp for easy lamp replacement. The status of the lamps may be monitored
- 3 - Speed Scanning, Low-Medium-High
- Real-time clock for date and time stamping of results.
- Powerful built-in program or SCT-PC Windows based software UV/Vis Analyst including sophisticated utility programs.
- Data Download-to-PC software for stand-alone models (optional)

FIELD OF APPLICATIONS :

- * Clinical Labs
- * Pharmaceutical Labs
- * Bio-Chemical Labs
- * Research Labs for the applications such as Quantitative analysis, Kinetics, wave length scan, Multiwavelength, DNA - Protein analysis.

TECHNICAL SPECIFICATIONS:

UV VISIBLE					
PRODUCT NO.	SCT-105.003.10	SCT-105.003.11	SCT-105.003.12	SCT-105.003.13	SCT-105.003.14
SCT MODEL NO.	SCT-BETA-01	SCT-BETA-02	SCT-BETA-03	SCT-BETA-04	SCT-BETA-05
Wavelength Range	190-1100 nm				
Spectral Bandwidth	4 nm	2 nm	1.8 nm	0.5 / 1 / 2 / 4 nm	1 nm
Optical System	Single Beam , Grating 1200 lines/mm				
Wavelength Accuracy	±0.5 nm		±0.3 nm		
Wavelength Repeatability	0.3 nm		0.2 nm		
Scan Speed	SCANNING - Hi, MED, LOW., MAX. 3000 nm / min				
Photometric Accuracy	≤ ±0.5%T or ±0.003A@1A				
Photometric Range	-0.3 - 3A, 0-200% T				
Stray Light	≤ 0.05%T @220, 360 nm				
Stability	±0.002A/h @500 nm				
Display	5 inches LCD (320*240 dots)				
Baseline Flatness	±0.002A (200-1000 nm)				
Standard Cell Holder	Standard 10 mm pathlength cuvette				
Light Source	Halogen & Deuterium lamp (pre-aligned)				
Output	USB Port & Parallel Port (printer)				
Power Requirement	AC 110/220V 50/60 Hz				
Dimensions (W*D*H)	480x360x160 mm		600x450x200 mm		
Weight	14 Kg		20 Kg		

ORDERING INFORMATIONS:

PRODUCT NO.	MODEL NO.	DESCRIPTION
SCT-105.003.10	SCT-BETA-1	SCT-BETA-1 - UV Spectrophotometer supplied complete with Glass Cuvette, Quartz Cuvette, User CD, Dust Cover, Manual, Printer Cable, USB, UK Plug, AC110/220V-50/60 Hz.
SCT-105.003.11	SCT-BETA-2	SCT-BETA-2 - UV Spectrophotometer supplied complete with Glass Cuvette, Quartz Cuvette, User CD, Dust Cover, Manual, Printer Cable, USB, UK Plug, AC110/220V-50/60 Hz.
SCT-105.003.12	SCT-BETA-3	SCT-BETA-3- UV Spectrophotometer supplied complete with Glass Cuvette, Quartz Cuvette, User CD, Dust Cover, Manual, Printer Cable, USB, UK Plug, AC110/220V-50/60 Hz.
SCT-105.003.13	SCT-BETA-4	SCT-BETA-4 - UV Spectrophotometer supplied complete with Glass Cuvette, Quartz Cuvette, User CD, Dust Cover, Manual, Printer Cable, USB, UK Plug, AC110/220V-50/60 Hz.
SCT-105.003.14	SCT-BETA-5	SCT-BETA-5 - UV Spectrophotometer supplied complete with Glass Cuvette, Quartz Cuvette, User CD, Dust Cover, Manual, Printer Cable, USB, UK Plug, AC110/220V-50/60 Hz.

SCT BETA SERIES 1/2/3/4&5 IN-BUILT SOFTWARE :

The first and important option of the software is making the standard curve. During your test preparation you can make upto 10 standard solutions to make the standard graph. Further, you have 4 - methods for fitting the standard curve through the calibration points; LINEAR FIT / LINEAR FIT THROUGH ZERO / SQUARE FIT and CUBIC FIT.

SCT-Wave Length Scan : (Pic-3)

SCT-Kinetics : (Pic-4)

SCT-Multiwavelength : (Pic-5)

SCT-built-in software allows the measurement of multiple wavelengths and series of samples. Upto 10 different wavelengths can be entered.

SCT-DNA / PROTEIN TEST : (Pic-6) :

In most of the Genetic Engineering and Bio-Chemistry Labs. DNA/PROTEIN Ratio Test become crucial in many experiments. DNA concentration and purity is an important factor.

Stand-alone version models comes with SCT-B built-in software. These built-in software can perform, the functions like Basic Photometry, Quantitative analysis, Standard Curves, coefficient analysis, wave length scan, kinetics, Multiwave length, DNA / Protein Tests and system utilities control, as shown in Pic-1.

SCT - STANDARD CURVE

Up to 10 standard solutions may be used to establish calibration equation curve. There is a choice of four methods for fitting a curve through the calibration points: Linear fit, Linear fit through zero, square fit and cubic fit.

SCT - WAVELENGTH SCAN

The Wavelength Scan intervals are 0.1, 0.2, 0.5, 1, 2, 5nm, and High, Medium and Low scan speeds are available. Scan speeds vary from 100 to 1000 nm/min. Wavelengths are scanned from high to low so that the instrument stand by at high wavelength. This minimizes the degradation of UV sensitive samples. Precise control of filter and lamp changes means that their effects are not seen on the final scan. Post-run manipulation includes re-scaling axis, curve tracking and peak picking.

SCT - KINETICS

This mode may be used for scanning time course or reacting rate calculations. Abs. vs. time graphs is displayed on the screen in real time.

Wait time and measurement time up to 12 hours may be entered with time intervals of 0.5, 1, 2.5, 10, 30, seconds and 1 min.

Post-run manipulation includes re-scaling, curve tracking and selection of the part of the curve required for the rate calculation. Rate is calculated using a linear regression algorithm before multiplying by the entered factor.

SCT - MULTI-WAVELENGTH

Up to 10 wavelengths may be entered, allowing the measurement of multiple wavelengths on a series of Samples

SCT - DNA/PROTEIN TEST

Concentration and DNA purity are calculated by Absorbance ratios 260nm/280nm or 260nm/230nm with optional subtracted absorbance at 320nm

DNA Concentration= $62.9 \times A_{260} - 36.0 \times A_{280}$

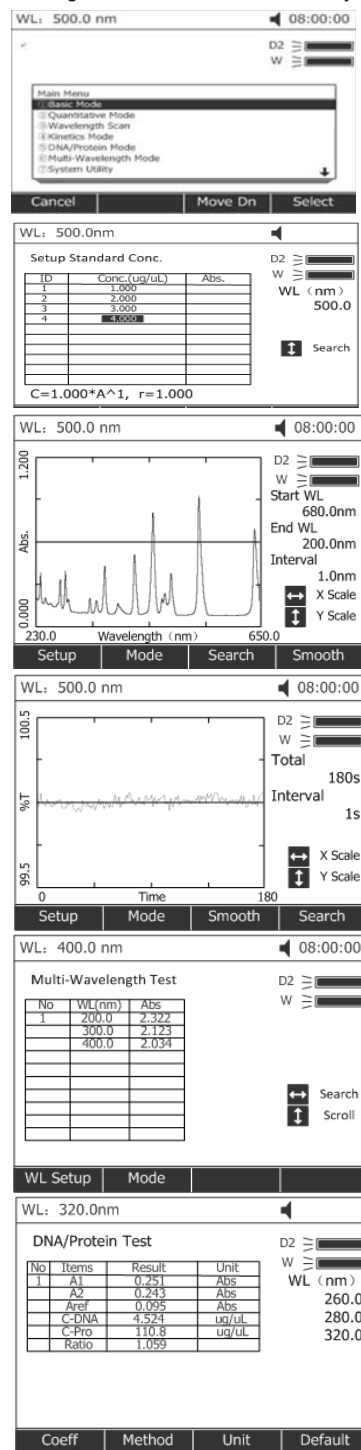
Or $49.1 \times A_{260} - 3.48 \times A_{230}$

Protein Concentration= $1552 \times A_{260} - 757.3 \times A_{280}$

Or $183 \times A_{260} - 75.8 \times A_{230}$

Other wavelengths and factors may be entered.

* Please contact us for any optional SCT Software - Upgradation.



SCT-GAMMA SERIES : 1/2 & 3 DOUBLE BEAM UV-VISIBLE SPECTROPHOTOMETERS

SCT - GAMMA Series, is highly designed to cater the customers looking for a sophisticated spectrophotometer. In this series, we have released 3 advance models which has the spectral bandwidth from 0.5 to 1.8, all are double beam models, you will find the details in the specification Table and in the Salient Feature Section.

Like BETA Series - GAMMA Series also, produced in 2 - different versions.

1. Stand alone version with built-in software.
2. PC - version with SCT - UV - analyst external software (Specifications as per the table).

SCT GAMMA series is an advanced double beam design consisting of three models.

SALIENT FEATURES :

- Elegant and advance Design
- Large 5" LED Display
- Fixed or variable slits(bandwidths)
- Double beam - Scanning (190-1100nm)
- Different Scanning Speed Low - Med - High
- Prealigned - Tungsten & Deuterium Lamps
- $\pm 0.3\%$ Wavelength accuracy and better bandwidth
- For Stand-alone models, all software methods are included as built-in standard; this eliminates the need of software.
- software upgrading helps to keep it updated the latest version
- Data Download-to-PC software expands the data storage to unlimited.



FIELD OF APPLICATIONS:

- Advanced Bio-Chemical Labs.
- Forensic - Research Labs
- University Factory Q/C Labs
- Chemical Factory Q/C Labs
- Food Industrial Q/C Labs
- Pharmaceutical Studies / Labs

TECHNICAL SPECIFICATIONS:

UV VISIBLE			
PRODUCT NO.	SCT-105.003.15	SCT-105.003.16	SCT-105.003.17
SCT MODEL NO.	SCT-GAMMA-1	SCT-GAMMA-2	SCT-GAMMA-3
Wavelength Range	190-1100nm		
Spectral Bandwidth	1.8nm	1.0nm	0.5,1,2,4nm
Optical System	Double Beam , Grating 1200 lines/mm		
Wavelength Accuracy	± 0.3 nm		
Wavelength Repeatability	0.2 nm		
Scan Speed	SCANNING : HI, MED., LOW. MAX. 3000 nm/min		
Photometric Accuracy	$\leq \pm 0.3\%$ T or $\pm 0.002A$ @ 1A		
Photometric Range	0 - 200%T , -0.3 - 3A .		
Stray Light	0.05% T @ 220, 360 nm		
Stability	$\pm 0.001A/h$ @ 500 nm		
Display	5 inches LCD (320 x 240 dots)		
Baseline Flatness	$\pm 0.001A$		
Standard Cell Holder	Standard 10mm single cell holder (2 pcs)		
Sample Compartment	Standard 10mm pathlength cuvette		
Light Source	Tungsten & Deuterium lamp (pre-aligned)		
Output	USB Port & Parallel Port (printer)		
Power Requirement	AC 110 / 220V 50/60 Hz		
Dimensions (W*D*H)	600 x 450 x 200 mm		
Weight	22 Kg		

ORDERING INFORMATION:

PRODUCT NO.	MODEL NO.	DESCRIPTION
SCT-105.003.15	SCT-GAMMA-1	SCT-GAMMA-1 - UV Spectrophotometer supplied complete with Glass Cuvette, Quartz Cuvette, User CD, Dust Cover, Manual, Printer Cable, USB, UK Plug, AC110/220V-50/60 Hz.
SCT-105.003.16	SCT-GAMMA-2	SCT-GAMMA-2 - UV Spectrophotometer supplied complete with Glass Cuvette, Quartz Cuvette, User CD, Dust Cover, Manual, Printer Cable, USB, UK Plug, AC110/220V-50/60 Hz.
SCT-105.003.17	SCT-GAMMA-3	SCT-GAMMA-3- UV Spectrophotometer supplied complete with Glass Cuvette, Quartz Cuvette, User CD, Dust Cover, Manual, Printer Cable, USB, UK Plug, AC110/220V-50/60 Hz.

SCT GAMMA SERIES : 1/2 & 3 IN-BUILT SOFTWARE

Stand-alone version models comes with SCT in-built software. These built-in software can perform, the functions like Basic Photometry, Quantitative analysis, Standard Curves, coefficient analysis, wave length scan, kinetics, Multiwave length, DNA / Protein Tests and system utilities control, as shown in Pic-1

SCT - STANDARD CURVE

Up to 10 standard solutions may be used to establish calibration equation curve. There is a choice of four methods for fitting curve through the calibration points: Linear fit, Linear fit through zero, square fit and cubic fit.

SCT-WAVELENGTH SCAN

The Wavelength Scan intervals are 0.1, 0.2, 0.5, 1, 2, 5nm, and High, Medium and Low scan speeds are available. Scan speeds vary from 100 to 1000 nm/min. Wavelengths are scanned from high to low so that the instrument stand-by at high wavelength. This minimizes the degradation of UV sensitive samples. Precise control of filter and lamp changes means that their effects are not seen on the final scan. Post-run manipulation includes re-scaling axes, curve tracking and peak picking.

SCT-KINETICS

This mode may be used for scanning time course or reacting rate calculations. Abs. vs. time graphs is displayed on the screen in real time.

Wait time and measurement time up to 12 hours may be entered with time intervals of 0.5, 1, 2.5, 10, 30, seconds and 1 min.

Post-run manipulation includes re-scaling, curve tracking and selection of the part of the curve required for the rate calculation. Rate is calculated using a linear regression algorithm before multiplying by the entered factor.

SCT - MULTI-WAVELENGTH

Up to 10 wavelengths may be entered, allowing the measurement of multiple wavelengths on a series of Samples

SCT - DNA/PROTEIN TEST

Concentration and DNA purity are calculated by Absorbance ratios 260nm/280nm or 260nm/230nm with optional subtracted absorbance at 320nm

DNA Concentration= $62.9 \times A_{260} - 36.0 \times A_{280}$

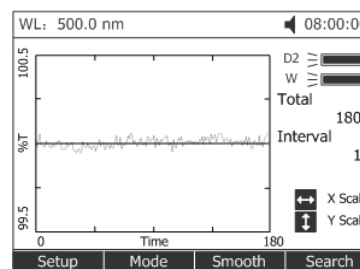
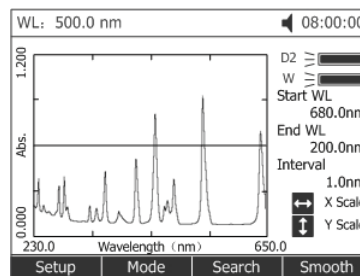
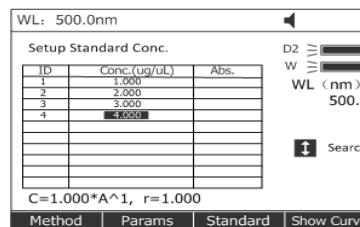
Or $49.1 \times A_{260} - 3.48 \times A_{230}$

Protein Concentration= $1552 \times A_{260} - 757.3 \times A_{280}$

Or $183 \times A_{260} - 75.8 \times A_{230}$

Other wavelengths and factors may be entered.

* Please contact us for any optional SCT-Software - Upgradation.



No	WL(nm)	Abs
1	200.0	2.322
2	300.0	2.123
3	400.0	2.034

No	Items	Result	Unit
1	A1	0.251	Abs
	A2	0.243	Abs
	Aref	0.095	Abs
	C-DNA	4.524	ug/uL
	C-Pro	110.8	ug/uL
	Ratio	1.059	

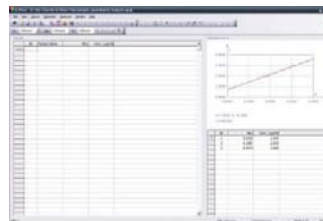
OPTIONAL AND UPGRADABLE ADVANCED SOFTWARES FOR : SCT ALPHA 6,7,8 & 9 MODELS

The SCT - ALPHA models 6,7,8 and 9 can be upgraded using - SCT - MW Professional PC - Controlled Software in the later stages if the customer wants to analyse their data using external PC (or) Laptop. The PC Software controls the instrument through USB Port. This advanced Professional Software can be purchased / upgraded separately. The general functions and modes as follows :-

SCT - QUANTITATIVE MODE:

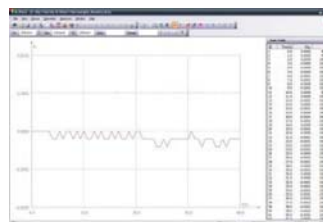
Use up to 20 standards to establish standard curve. Three methods for fitting a curve:

1-Linear fit - 2-Linear through zero - 3-Square fit



SCT - KINETICS MODE:

The Kinetics mode may be used for scanning time course or reacting rate calculations. Abs. Vs. Time graphs is displayed.

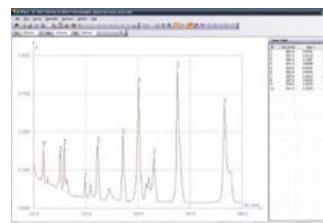


SCT - WAVELENGTH SCAN MODE:

Automatically records peaks and valleys. The quantity of the curves stored is unlimited.

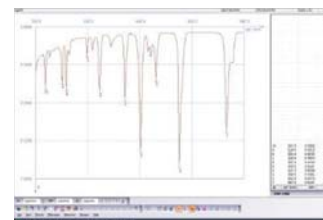
Post-run manipulation and processing includes.

1. Re-scaling axes, curve
2. Smoothing, combination, zooming, overlap...
3. 1st to 4th derivative



SCT - MULTI-WAVELENGTH TEST:

You can set up to 20 wavelengths to measure a sample.



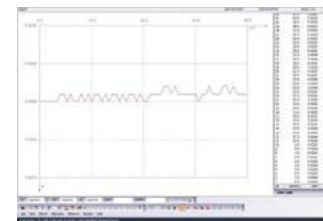
SCT - DNA/PROTEIN TEST:

Optional two formulas:

DNA Concentration. $=62.9 \times A_{260} - 36.0 \times A_{280}$

Or $49.1 \times A_{260} - 75.8 \times A_{230}$

You can also enter other wavelengths and factors to calculate.



ORDERING INFORMATION:

SCT.105.003.20

SCT-ALPHA-S

SCT ALPHA SERIES : SCT-MW Professional PC controlled Software for ALPHA 6,7,8 & 9.

UV/VIS ANALYST FOR SCT BETA & SCT GAMMA SERIES:

This SCT - Advanced SCT UV - VIS Analyst Software is made for the advanced research customers in order to upgrade their SCT BETA and GAMMA Series stand alone - built-in controlled Spectrophotometers. This software is purely optional and to be purchased separately. This software is more powerful in data processing, expanded data collectors, and more memory and storage capability.

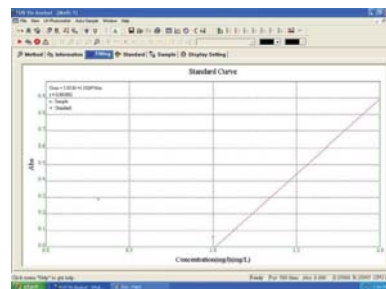
The SCT - BETA & GAMMA PC Application Software Offers :

1. SCT - Photometric Mode
2. SCT - Quantitative test (standard curve) mode
3. SCT - Wavelength Scan Mode
4. SCT - Kinetics Mode
5. SCT - DNA/Protein Mode
6. SCT - Multi Wavelength Mode
7. SCT - System Utility Mode

SCT - QUANTITATIVE TEST (STANDARD CURVE):

Use up to 20 standards to establish standard curve. Four methods for fitting a curve:

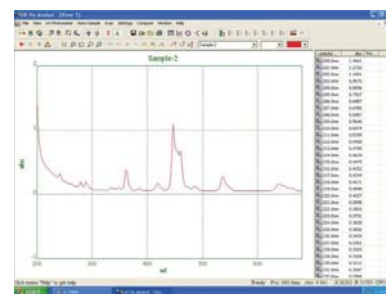
1. Linear fit
2. Linear through zero
3. Square fit
4. Cubic fit



SCT - WAVELENGTH SCAN:

Automatically record peaks and valleys. The quantity of channels is unlimited; you can simultaneously store as many as desired. Post-run manipulation and processing includes:

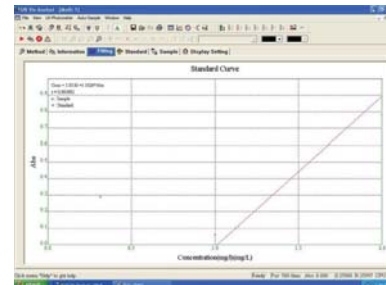
1. Re-scaling axes, curve
2. 1st to 4th derivative
3. Smoothing, combination, zooming, overlap.



SCT - KINETICS (ABS VS. TIME):

The Kinetics mode may be used for scanning time course or reacting rate calculations. Abs.Vs time graphs are displayed on the screen in real time. Wait time, measurement time and time intervals may be entered.

Post-run manipulation includes re-scaling, curve tracking and selection of the part of the curve required for the rate calculation. Rate is calculated using a linear regression algorithm before multiplying by the entered factor.



SCT - DNA/PROTEIN:

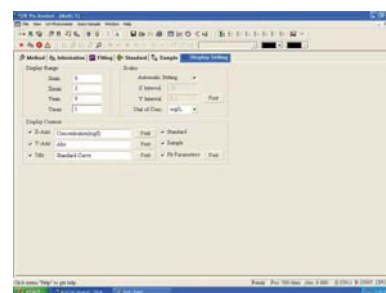
Concentration and DNA purity are quickly and easily calculated:

Absorbance ratios 260nm/280nm with optional subtracted absorbance at 320nm.

DNA Concentration = $62.9 \cdot A_{260} - 36.0 \cdot A_{280}$

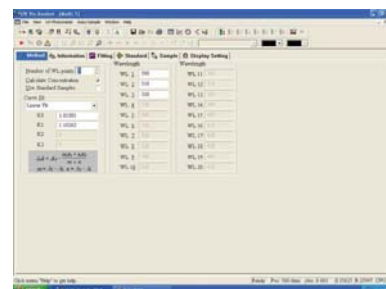
Protein Concentration = $1552 \cdot A_{260} - 757.3 \cdot A_{280}$

Other wavelengths and factors may be entered.



SCT - MULTI-WAVELENGTH:

Up to 20 wavelengths can be selected and multiple samples can be measured. (Auto cell changer is required to run multiple samples automatically)



* All SCT-Softwares/features are subjected to any changes without prior notice, due to quality improvement.

SCT SPECTROPHOTOMETER OPTIONAL ACCESSORIES

Considering our valuable customers, various Scientific research and needs. Mainly to perform different application and tests. ScichemTech have made many optional accessories available in the following section. We recommend customers to select the required optional accessories and spares based on their requirements.

CUVETTES

SQUARE CUVETTES GLASS

10 mm - SCT-105.003.AA
20 mm - SCT-105.003.AB
30 mm - SCT-105.003.AC
50 mm - SCT-105.003.AD
100 mm - SCT-105.003.AE

SQUARE CUVETTES QUARTS

10 mm - SCT-105.003.AF
20 mm - SCT-105.003.AG
30 mm - SCT-105.003.AH
50 mm - SCT-105.003.AI
100 mm - SCT-105.003.AJ



MICRO CELL QUARTS

100 UL - SCT-105.003-AK
200 UL - SCT-105.003-AL
500 UL - SCT-105.003-AM



CELL MASKING CONT. FLOW THROUGH G CELL

5 mm - SCT-105.003.AN
10 mm - SCT-105.003.AO
20 mm - SCT-105.003-AP
30 mm - SCT-105.003-AQ

CELL MASKING CONT. FLOW THROUGH Q CELL

5 mm - SCT-105.003.AR
10 mm - SCT-105.003-AS
20 mm - SCT-105.003-AT
30 mm - SCT-105.003-AU



SAMPLE HOLDERS :

SOLID SAMPLE HOLDER (SINGLE CELL)

SCT-105.003.AV



10 MM WATER JACKET FOR CELL HOLDER

SCT-105.003.AW



DEUTERIUM LAMP

SCT-105.003.AX



CUVETTES HOLDERS

4 CELL HOLDER FOR 10 mm SQU. CUVETTE

SCT-105.003.AY



HALOGEN LAMP (PHILIPS)

SCT-105.003.AZ
SCT-105.003.AZ1



4 CELL HOLDER FOR UPTO 50 mm SQU. CUVETTE

SCT-105.003.BA



HALOGEN LAMP (OSRAM)

SCT-105.003.BB



4 CELL HOLDER FOR UPTO 100 mm SQU. CUVETTE

SCT-105.003.BC

CELL HOLDERS :

CYLINDRICAL CELL HOLDER
SCT-105.003.BD



WATER JACKET CELL HOLDER
SCT-105.003.BE



MICRO CELL HOLDER
SCT-105.003.BF



TUBE HOLDERS :

TEST TUBE HOLDER
SCT-105.003.BG



8 POSITION AUTO CELL CHANGER
SCT-105.003.BH



SIPPER SYSTEM :

SIPPER SYSTEM
SCT-105.003.BI



CONSTANT TEMPERATURE SYSTEM
SCT-105.003.BJ



CONSTANT TEMPERATURE SIPPER SYSTEM
SCT-105.003.BK



PRINTER :

THERMAL PRINTER
SCT-105.003.BL



SCT- DELTA -1 SPECTROPHOTOMETRIC NUCLEIC ACID ANALYZERS

Based on the rapid & advanced development in the Molecular biology & the Nucleic acid research, the need for the high level faster direct method for analysing of DNA / RNA & Proteins has increased. Keeping this fact in mind ScichemTech's R & D has developed a new series of Spectrophotometers called "Delta series". SCT-DELTA-1 is a Nucleic Acid Analyzer designed for analyzing the concentration and pure of Nucleic Acid (DNA/RNA). Simply pipette 0.5~2ul sample onto the pedestal, laying down the sampling arm, SCT-DELTA-1 can automatically complete the measurement within 5 seconds.

SALIENT FEATURES :

- SCT-DELTA-1 Spectrophotometric Nucleic acid analyser is designed in a pleasant & presentable manner.
- SCT-DELTA-1 Spectrophotometric Nucleic acid analyser has Direct, easy measurements in less than 5 seconds
- SCT-DELTA-1 Spectrophotometric Nucleic acid analyser has the capacity to detect the double stranded DNA upto 10~4000ng/ul (dsDNA) and protein upto 0.1mg/ml~100mg/ml
- SCT-DELTA-1 Spectrophotometric Nucleic acid analyser needs only 0.5~2ul samples
- SCT-DELTA-1 Spectrophotometric Nucleic acid analyser has the technology not use any Cuvettes, quartz cells ,direct measurement. Also no dilution of samples.
- SCT-DELTA-1 Spectrophotometric Nucleic acid analyser has direct clear touch screen to read the data and set the programme..
- SCT-DELTA-1 Spectrophotometric Nucleic acid analyser has less than 5 seconds measuring time.
- SCT-DELTA-1 Spectrophotometric Nucleic acid analyser has a Optional data output via built-in printer, SD-RAM Card, USB memory

TECHNICAL SPECIFICATIONS:

PRODUCT NO	SCT-105.003.20
MODEL NO	SCT- DELTA-1
Wavelength Range	230 nm, 260nm, 280nm
Minimum Sample Size	0.5~2.0ul
Path Length	0.2mm (For high concentration measurement) 1.0mm (For ordinary)
Light Source	Xenon flash lamp
Absorbance Precision	0.003 Abs
Absorbance Range	0.02 - 80 (10 mm equivalent)
Detects Nucleic acid up to	10~4000ng/ul (dsDNA)
Detects Protein up to	0.1mg/ml~100mg/ml
Measurement Time	< 5s
Dimensions (W x D x H)mm	210 x 280 x 166
Sample Pedestal Material	Aluminum alloy and Quartz fiber
Operating Voltage	24V DC
Operating Power Consumption	12 - 18 W



ORDERING INFORMATIONS:

PRODUCT NO	MODEL NO	DESCRIPTION
SCT-105.003.20	SCT- DELTA -1	SCT- DELTA -1 Spectrophotometric Nucleic Acid Analyzer is supplied completely in a case with manual.

SCT-DELTA-2 SPECTROPHOTOMETRIC ADVANCE NUCLEIC ACID & PROTEIN ANALYSERS

Based on the rapid & advanced development in the Molecular biology & the Nucleic acid research, the need for the high level faster direct method for analysing of DNA / RNA & Proteins has increased. Keeping this fact in mind ScichemTech's R & D has developed a new series of Spectrophotometers called "Delta series". SCT-DELTA-2 Spectrophotometric Advance Nucleic Acid & Protein Analyser is the perfect instrument for almost lab dealing with sample analysis or preparation. It can accurately measure DNA, RNA and Oligonucleotide calculations, protein assays etc.. The system utilises CCD detector, a Xenon light source for long lamp lifetimes together with simply software. Simple pipette 0.5~2ul sample onto the pedestal, laying down the sampling arm, it can automatically complete the measurement within 5 seconds.

SALIENT FEATURES :

- SCT-DELTA-2 Spectrophotometric Advance Nucleic Acid & Protein Analyser is designed in a pleasant & presentable manner.
- SCT-DELTA-2 Spectrophotometric Advance Nucleic Acid & Protein Analyser has a high detection level of DNA/ RANA /OLIGONUCLEOTIDES & PROTEINS.
- SCT-DELTA-2 Spectrophotometric Advance Nucleic Acid & Protein Analyser has Direct, easy measurements in less than 5 seconds
- SCT-DELTA-2 Spectrophotometric Advance Nucleic Acid & Protein Analyser Measures DNA, RNA

- (A260) and Protein (A280), concentrations and sample purity (260/280 ratio)
- SCT-DELTA-2 Spectrophotometric Advance Nucleic Acid & Protein Analyser has the technology not use any Cuvettes, quartz cells ,direct measurement. Also no dilution of samples.
- SCT-DELTA-2 Spectrophotometric Advance Nucleic Acid & Protein Analyser easy to operate & direct loading of samples and quick results.
- SCT-DELTA-2 Spectrophotometric Advance Nucleic Acid & Protein Analyser has a User-friendly software that includes Custom Methods and data export capabilities
- SCT-DELTA-2 Spectrophotometric Advance Nucleic Acid & Protein Analyser has many advanced features & act as the important tool in the Bio-chemistry & Molecular biology.

TECHNICAL SPECIFICATIONS:

PRODUCT NO	SCT-105.003.21
MODEL NO	SCT- DELTA-2
Wavelength Range	200~800 nm
Minimum Sample Size	0.5~2.0ul
Path Length	0.2mm (For high concentration measurement) 1.0mm (For ordinary)
Light Source	Xenon flash lamp
Detector Type	3864-element linear silicon CCD array
Wavelength Accuracy	1nm
Spectral Resolution	≤ 3 nm (FWHM at Hg 546 nm)
Absorbance Precision	0.003 Abs
Absorbance Accuracy	1% (7.332Abs at 260 nm)
Absorbance Range	0.02 - 90 (10 mm equivalent)
Measurement Time	< 5s
Dimensions (W x D x H)mm	200 x 262 x 154
Weight	2.5kg
Sample Pedestal Material	Aluminum alloy and Quartz fiber
Operating Voltage	24V DC
Operating Power Consumption	12 - 18 W
Standby Power Consumption	5W
Software Compatibility	Windows 7, Windows XP



ORDERING INFORMATION:

PRODUCT NO	MODEL NO	DESCRIPTION
SCT-105.003.21	SCT- DELTA -2	SCT-DELTA-2 Spectrophotometric Advance Nucleic Acid & Protein Analyser is supplied completely in a case with manual.

243

SCT OMEGA-1 DIGITAL LAB & INDUSTRIAL FLAME PHOTOMETERS

SALIENT FEATURES :

- SCT-OMEGA-1 Digital Flame Photometers are made with attractive design, high precision and superior quality.
- SCT-OMEGA-1 is based on Microprocessor control.
- SCT-OMEGA-1 has ppm level detection and 2% linearity using LPG & OIL –free dry air flame system.
- SCT-OMEGA-1 Can simultaneously analyze Na, K, Li, Ca and Ba in single aspiration of the sample with proper removal of interferences.
- SCT-OMEGA-1 has multiple calibration curves saving facility makes the Analysis made much more simpler.
- SCT-OMEGA-1 has advanced features like automatic ignition, automatic gas shut off in case of power failure.
- Calibration curve programmability can be done using a maximum of 20 standards in the range of interest of the user, data processing through optional curve fitting techniques like segmental and quadratic.
- SCT-OMEGA-1 can also be interfaced to a printer.
- SCT-OMEGA-1 has Optional PC compatibility with RS232C Interface.
- Samples data storage facility.
- Conforms to CE safety standards.
- Manufactured under ISO 9001 : 2008 Quality Standards.



TECHNICAL SPECIFICATIONS :

SCT PRODUCT NO	SCT-105.003.22	
SCT MODEL NO	SCT-OMEGA-1	
SCT-OMEGA-1 - Range		
Sodium (Na)	1-100 ppm 0-200 mEq	
Potassium (K)	1-100 ppm 0-100 mEq	
Lithium (Li)	1-100 ppm 0-10 mEq	
Calcium (Ca)	15-100 ppm 0-5 mEq	
Barium (Ba)	50-1000 ppm mEq values are claimed with appropriate dilution	
SCT-OMEGA-1 - Sensitivity		Flame Colour
Sodium (Na)	0.5 ppm	Yellow
Potassium (K)	0.5 ppm	Violet
Lithium (Li)	0.5 ppm	Red
Calcium (Ca)	15 ppm	Orange
Barium (Ba)	50 ppm	Lime Green
SCT-OMEGA-1 - Linearity		Emission Wavelength (nm)
Sodium (Na)	Better than 2%	(Na) 589
Potassium (K)		(K) 766
Lithium (Li)		(Li) 670
Calcium (Ca)		(Ca) 622 (Ca OH)
Barium (Ba)		(Ba)
SCT-OMEGA-1 - Repeatability		
Sodium (Na)	Better than 1% CV for 20 consecutive samples for Na, K, Li, Ca and Ba* (* 3% CV for 20 consecutive samples of Ba between 50 to 199 ppm)	
Potassium (K)		
Lithium (Li)		
Calcium (Ca)		
Barium (Ba)		
Flame System	LPG & Oil-free dry air	
Detector	Photodiode	
Data Presentation		
Readout	2 line 24 character dot matrix backlight LCD display	
Hardcopy	Parallel Centronic Printer	
Power Requirement	90-260 V AC, 47-63 Hz, 1φ, Max. 65 VA	
Dimensions of the SCT-OMEGA-1 -		
Size (WxDxH) in mm	430 x 230 x 235 (Chimney of the flame chamber contributes to height by another 100 mm)	
Weight in kg.	10 - 12 Kg.	
Accessories		
With Instrument - Standard	Filters for Na, K, Air compressor with buffer tank and 5 ml beakers, Cleaning wire, Capillary	
Optional	Filters for Ca, Li, Ba and Printer PC & PC Software	

ORDERING INFORMATIONS:

PRODUCT NO.	MODEL NO.	DESCRIPTION
SCT-105.003.22	SCT - OMEGA-1	SCT OMEGA-1 Flame Photometer is supplied complete with filters for Na, K, Air compressor with buffer tank and 5cc beakers, cleaning wire, capillary and instruction manual.

OPTIONAL ACCESSORIES:

PRODUCT NO.	DESCRIPTION
SCT-105.003.22.AA	Filter for Ca
SCT-105.003.22.AB	Filter for Li
SCT-105.003.22.AC	Filter for Ba
SCT-105.003.22.AD	PC & Suitable Printer
SCT-105.003.22.AE	Upgradable SCT-OMEGA-1 Software

SCT-OMEGA-2 DOUBLE BEAM ATOMIC ABSORPTION SPECTROPHOTOMETERS

SALIENT FEATURES :

- SCT-OMEGA-2 Double beam Atomic Absorption Spectrophotometer is designed with ergonomic style & with elegant look.
- SCT-OMEGA-2 Atomic Absorption Spectrophotometer has double beam optics with quality optics & parts.
- SCT-OMEGA-2 Atomic Absorption Spectrophotometer is Microprocessor based ,with user friendly inbuilt software for detailed results.
- SCT-OMEGA-2 Atomic Absorption Spectrophotometer has deuterium lamp for the background corrections.
- SCT-OMEGA-2 Atomic Absorption Spectrophotometer has wide range Band with 190-900 nm, Auto selection of bandwidth in 8 steps.

- SCT-OMEGA-2 Atomic Absorption Spectrophotometer has the light source from the Hollow cathode lamps. It has six lamp turret with individual power supply for correct fixing.
- SCT-OMEGA-2 Atomic Absorption Spectrophotometer has Titanium burner for precise flame & results.
- SCT-OMEGA-2 Atomic Absorption Spectrophotometer has monochromator with Czerny -Turner 1/3 m with 1800 lines / mm holographic diffraction grating and hard coated optics.
- SCT-OMEGA-2 Atomic Absorption Spectrophotometer has the PMT- Photo multiplier Tube detector and with Auto diagnosis function.
- SCT-OMEGA-2 Atomic Absorption Spectrophotometer is suitable for many applications like Analytical Labs, Environmental Labs, Clinical research Labs, Horticultural labs Etc.,
- Conforms to CE safety standards.
- Manufactured under ISO 9001 : 2008 Quality Standards.



TECHNICAL SPECIFICATIONS :

PRODUCT NO.	SCT-105.003.23
MODEL NO.	SCT-OMEGA-2
SPECTRAL	
RANGE	185 to 900 nm
BANDWIDTH	Auto select in 8 steps from 0.1 to 2.5 nm
PHOTOMETRIC	
RANGE	0 to 2 Abs
LIGHT SOURCE	Hollow cathode lamp (HCL)
BACKGROUND CORRECTION	Deuterium Lamp (D2)
BURNER	Titanium constructions, Premix, Laminar flow, 100 mm
FUEL	Acetylene (C2 H2)
OXIDANT	Air/Nitrous Oxide (N2O)
FLOW CONTROL	Integral gas control system with panel flow
MONOCHROMATOR	Czerny -Turner 1/3 m with 1800 lines / mm holographic diffraction grating and hard coated optics.
DETECTOR	Wide range Photo Multiplier Tube (PMT)
READOUT	4 line 20 character Dot matrix backlight LCD
POWER SUPPLY	
HC LAMP	0 to 30 mA, modulated
D2 LAMP	15 to 300 mA, modulated
PMT	-200 to -1000V
PHYSICAL DIMENSIONS	
SIZE (WDXH) IN MM	822 + 90 x 550 x 395
WEIGHT IN KG.	Approx. 65

245

OPTIONAL ACCESSORIES

PRODUCT NO.	DESCRIPTION
SCT-105.003.23 AA	Windows Based Software (SCT-SS SOFT)
SCT-105.003.23 AB	Hollow Cathode lamps for the required elements: Please mention the required element & accordingly prices will vary.
SCT-105.003.23 AC	background correction with D2 Lamp
SCT-105.003.23 AD	50mm Burner for N O-C H
SCT-105.003.23 AE	Nebulizer with PI-Ir capillary
SCT-105.003.23 AF	Hydride/Vapour Generator
SCT-105.003.23 AG	Compressor for SCT-OMEGA-2
SCT-105.003.23 AH	Printer for SCT-OMEGA-2
SCT-105.003.23 AI	Suitable Laptop with windows operating system - Software
SCT-107.028.XX	Chemical Fume-Hood : Please select the required model from our SCT chapter : 7

ORDERING INFORMATION:

PRODUCT NO	MODEL NO	DESCRIPTION
SCT-105.003.23	SCT-OMEGA-2	SCT-OMEGA-2 Double beam Atomic Absorption Spectrophotometer is supplied with Six Lamp Turret, Compressor, RS 232 Interface, Acetylene Regulator, 100mm Burner, Flash Arrestor) and the operation & user's manual

SCT-OMEGA-3 ADVANCED TOUCH SCREEN ATOMIC ABSORPTION SPECTROPHOTOMETERS

SALIENT FEATURES :

- SCT-OMEGA-3 Advanced Touch screen Atomic Absorption Spectrophotometer is designed with ergonomic style & with attractive appearance.with high Resolution Touch Screen LCD Color Graphical Display
- SCT-OMEGA-3 Advanced Touch screen Atomic Absorption Spectrophotometer has double beam optics with quality optics & parts.
- SCT-OMEGA-3 Advanced Touch screen Atomic Absorption Spectrophotometer has wide range Band with 185-900 nm, Auto selection of bandwidth & 0 to 2.5 nm continuously variable with increment of 0.1 nm.
- SCT-OMEGA-3 Advanced Touch screen Atomic Absorption Spectrophotometer Spectrophotometer has the light source from the Hollow cathode lamps.It has 6 lamps Automatic turrent with independent power supply compatible to coded lamps .
- SCT-OMEGA-3 Advanced Touch screen Atomic Absorption Spectrophotometer has auto-flame control, Optimization of flame conditions for each element,Precise vertical, lateral and rotational alignment of burner for Absorbance, Optimization
- SCT-OMEGA-3 Advanced Touch screen Atomic Absorption Spectrophotometer has the flow control ; Integral Auto Gas Control System with LCD Display, Keyboard and all Fault Indicators with all safety features ,Automatic Flame Changeover, Auto Ignition and Shut Off, Optimization of Flame Conditions for each Element with programmable Flame Control
- SCT-OMEGA-3 Advanced Touch screen Atomic Absorption Spectrophotometer
- SCT-OMEGA-3 Advanced Touch screen Atomic Absorption Spectrophotometer has the monochromator with Czerneu Rurner 1/3m with 1800 lines/mm holographic diffraction grating and hard coated optics ,Reciprocal linear dispersion 1.5to 2.0nm/mm
- SCT-OMEGA-3 Advanced Touch screen Atomic Absorption Spectrophotometer
- SCT-OMEGA-3 Advanced Touch screen Atomic Absorption Spectrophotometer has Integral Microcontroller based auto gas box with all safety features
- SCT-OMEGA-3 Advanced Touch screen Atomic Absorption Spectrophotometer has a wide applications like; Coal, Mineral, Petro-chemicals, Electro-plating industries, Soil, Fertilizers & Micro nutrient analysis, Forensic Labs, ,Horticulture & agricultural Labs, Environmental & Water Labs, Biological organic field, Metallurgy, Glass, Cement, Steel and in many Industries
- Conforms to CE safety standards.
- Manufactured under ISO 9001 : 2008 Quality Standards.



246

TECHNICAL SPECIFICATIONS :

PRODUCT NO.	SCT-105.003.23
MODEL NO.	SCT-OMEGA-2
SPECTRAL	
Range	185 to 900 nm
Accuracy	± 0.5 nm
Readability	0.1 nm
Repeatability	± 0.2 nm
Bandwidth	0 to 2.5 nm continuously variable with increment of 0.1 nm
PHOTOMETRIC	
Range	0 to 2 Abs
Accuracy	± 0.010 Abs at 1.0 Abs
Integration Time	0.04 to 99 sec
Light Source	6 lamps Automatic turrent with independent power supply compatible to coded lamps
Background Correction	Deuterium Lamp (D2)
Monochromator	Czerneu Rurner 1/3m with 1800 lines/mm holographic diffraction grating and hard coated optics Reciprocal linear dispersion 1.5to 2.0nm/mm
DETECTOR	Wide Range Photo Multiplier Tube (PMT)
POWER SUPPLY	
HC Lamp	0 to 30 mA modulated
D2 Lamp	15 to 300 mA modulated
PMT	-200 to -1000 Volts)
FLOW CONTROL BURNER	*Integral Auto Gas Control System with LCD Display, Keyboard and all Fault Indicators with all safety features *Automatic Flame Changeover, Auto Ignition and Shut Off *Optimization of Flame Conditions for each Element with programmable Flame Control
LIGHT SOURCE	6/8 Lamps Automatic Turret with Independent Power Supply compatible to coded and non coded HC Lamps.
BACK GROUND CORRECTION	
MONOCHROMATOR	Deuterium Lamp (D2) Czerney Turner 1/3 m with 1800 lines/mm Holographic Grating and Hard Coded Optics.

SAFETY FEATURES	Full Safety Interlocks including Pressure Sensors on both lines, Flame failure Detection, Burner Presence and Recognition, Nebulizer Presence and Drain Sensor, Power Failure Protection and Emergency Flame Shut Off Switch and Flash Back Arrestor on the Cylinder
BURNER	Titanium construction, Premix Laminar Flow 100mm burner for Air - Acetylene (C ₂ H ₂) Optional - 50 mm burner for Nitrous Oxide (N ₂ O) Acetylene (C ₂ H ₂) The Spray Chamber is made of Inert Material .i.e., PTFE (Teflon) fitted with adjustable impact bead Aerosol
FUEL	Acetylene (C ₂ H ₂)
OXIDANT	Air / Nitrous Oxide (N ₂ O)
NEBULIZER	Made of fully Inert Material with 90% Platinum and 10% Iridium Alloy Capillary
SAMPLE FEED RATE	3 to 8 ml/min (Adjustable)
PORTS	3 USB Ports - Can be used for Printer, Keyboard, Pen Drive and Mouse TCP/IP Port - Network Connectivity PC Port - PC Connectivity
DATA PROCESSING	Built in Windows® based Operating Software with following modes of Operations. 1. Absorbance 2. Concentration (Standard Calibration and Addition), Curve fit Options - Linear and Quadratic 3. Emission 4. Energy Profile
DATA PRESENTATION	
Display	7" (800X480 High Resolution Graphic Display)
Hard Copy	On printer (USB Interface)
Soft Copy	Mass Data Storage through USB Pen drive
POWER REQUIREMENT	230 V ± 10% AC, 50 Hz, 1ϕ, 200 VA Max.
PHYSICAL DIMENSIONS	
Size (WxDxH) in mm	822 (+90) x 550 x 395
Weight (in kg)	Approx. 70
SYSTEM UPGRADATION	Instrument can be upgraded to Hydride and Cold vapour Generator

ORDERING INFORMATIONS:

PRODUCT NO	MODEL NO	DESCRIPTION
SCT-105.003.24	SCT-OMEGA-3	SCT-OMEGA-3 Advanced Touch screen Double beam Atomic Absorption Spectrophotometer – is supplied with Built in PC and touch screen Color Graphical Display with Six auto Lamp Turret, Compressor, USB Port, Automatic Gas Box with auto flame alignment ,Back Ground corrector , Actylene regulator, Flash Arrestor and 100mm Burner. With a proper operation & user manual.

247

OPTIONAL ACCESSORIES:

PRODUCT NO.	DESCRIPTION
SCT-105.003.24 AA	Hollow Cathode lamps for the required elements: Please mention the require element & accordingly prices will vary.
SCT-105.003.24 AB	50 mm burner for N ₂ O – C ₂ H ₂ for SCT-OMEGA-3
SCT-105.003.24 AC	N ₂ O regulator for SCT-OMEGA-3
SCT-105.003.24 AD	Nebulizer with Pt-Ir Capillary for SCT-OMEGA-3
SCT-105.003.24 AE	Hydride/vapor generator for SCT-OMEGA-3
SCT-107.028.XX	Chemical fume hood : Please select the required model from our SCT chapter : 7

NOTES :

We thank our valuable customers for reading our optical and photometry catalogue. Our SCT- R+D is continuously working to add few more additional products for the metal, element and trance analysis soon, We will Have our own – Ass and ICP + related analytical products. In the following chapter you will find SCT-EQUIPMENT AND INSTRUMENTAL PRODUCTS, which has a good collection of lab equipment's. We at SCT are very much sure our products will be very attracting and useful to your day-to-day lab activities. Should you require any further clarifications or details please contact us at sales@scichemtech.com

* Manufacturer has the rights to change (or) modify the specifications without prior notice for quality improvement.