

Operating Instructions Parts List



Hand Stacker 1.0T/2.5M

Note: Owner and operator MUST read and understand this operating instructions before use this hand stacker.

Date: March , 2012

Welcome to use our hand stacker. Your stacker is made of high quality steel and was designed to give a durable, reliable and easy to use product. For your safety and correct operation, please carefully read this instruction book and warnings on the stacker before using it.

NOTE: All of the information reported herein is based on data available at the moment of printing. The factory reserves the right to modify its own products at any moment without notice and incurring in any sanction. So, it is suggested to always verify possible updates.

1. STRUCTURAL DATA FORM

	TYPE I (Adjusted fork)	TYPE II (Fixed fork)
Capacity	1000 kg	
Max. Fork Height	2500 mm	
Min. Fork Height	85 ± 2mm	
Fork Length	900mm	1150 mm
Size of fork	150x60mm	160x60mm
Fork Width(outside)	330~740mm	550 mm
Fork Width(inside)	30~440mm	230 mm
Over Height	1830mm	
Over Width	775mm	715mm

2. SAFETY GUIDANCE

- 2.1 Operator should read all warning signs and instructions here and on the stacker before using it.
- 2.2 Do not operate an hand stacker unless you are familiar with it and have been trained or authorized to do so.
- 2.3 Do not operate an hand stacker unless you have checked its condition. Give special attention to the wheels, the handle, the guide frame, the pilot wheel, the doorframe, etc.
- 2.4 Do not use on a slopping ground.
- 2.5 Do not take up any people on the forks.
- 2.6 The operator had better take on gloves for labor protecting.
- 2.7 When the goods have been transported or lifted, all people should be away form the forks for 600mm.
- 2.8 Do not load over maximum capacity.
- 2.9 The weight of goods should be distributed on the two forks, do not use only one fork. The center of gravity of goods should be in the center of two forks.
- 2.10 People forbid to stand under the forks.
- 2.11 Do not move the hand stacker when the goods are lifted to the height more than 300mm.
- 2.12 At other special condition or place, the operator should be carefully to operate the hand stacker.

3. MAINTENANCE

3.1 Hydraulic oil

Please check the oil level every six months. The oil can be hydraulic oil: **ISO VG32**, its viscosity should be 32cSt at 40°C, total volume is about 2.5lt.

3.2 Daily check and maintenance

It is necessary to check the hand stacker daily. Special attention should be paid to the wheels, the axles, as thread, rags, etc., it may block the wheels, the fork and the mast should be checked, too. The forks should be unloaded and lowered in the lowest position when the job is over.

3.3 Lubrication

Use motor oil or grease to lubricate all movable parts.

3.4 Remove the air

The air maybe enter the hydraulic pump during the transportation after the customer buys it. It will cause the piston rod to fail to keep up the raised height. The air can be removed in the following way: pull the control handle(D608) up and move handle(D610) up and down for several times.

4. TO ADJUST RELEASE DEVICE

On the draw-bar of this hand stacker, you can find the control handle (D608) which can be regulated in three positions: **LOWER** = to lower the forks; **NEUTRAL** = to move the load, and **LIFT** = to raise the fork. These three positions have been pre-positated at the factory. If however they have been changed, you can adjust according to following step:

4.1 If the forks elevate while pumping in the **NEUTRAL** position, turn the adjusting nut (D615) on the adjusting bolt (D614) clockwise or turn the adjusting screw (234) clockwise until pumping action does not raise the forks and the **NEUTRAL** position functions properly.

4.2 If the forks descend while pumping in the **NEUTRAL** position, turn the nut (D615) or the screw (234) counter-clockwise until the forks do not lower.

4.3 If the forks do not descent when the control handle (D608) is in the **LOWER** position, turn the nut (D615) or the screw (234) clockwise until raising the control handle (D608) lowers the forks. Then check the **NEUTRAL** position according to item 4.1 and 4.2 to be sure the nut (D615) and the screw (234) is in the proper position.

4.4 If the forks do not elevate while pumping in the **LIFT** position, turn the nut (D615) or the screw (234) counter-clockwise until the forks elevate while pumping in the **LIFT** position. Then check the **LOWER** and **NEUTRAL** position according to item 4.1, 4.2 and 4.3.

5. TROUBLES SHOOTING

No	Trouble	Clause	Fixing Methods
1	The forks cannot be up the max. height.	- The hydraulic oil is not enough.	- Pour in the oil.
2	The forks can not be lifted up.	- Without hydraulic oil. - The oil has impurities. - The nut (D615) is too high or the screw (234) is too close, keep the pumping valve open. - Air come into the hydraulic oil.	- Fill in the oil. - Change the oil. - Adjust the nut (D615) or the screw (234). (see item 4.4) - Banish the air.(see item 3.4)
3	The forks can not be descended.	- The piston rod(270) or pump body (261) or the mast (5) is deformed resulting from loading slanting to one side or over-loading. - The fork was kept in the high position for long time with piston rod bared to arise in rusting and jamming of the rod. - The adjusting nut (D615) or the screw (234) is not in the correct position. - The rollers (42) are not lubricated.	- Replace it. - Keeping the fork in the lowest position if not using, and pay more attention to lubricate the rod. - Adjust the nut (D615) or the screw (234). (see item 4.3) - Lubricate its.
4	Leaks	- Sealing parts worn or damaged. - Some part cracked or worn into small.	- Replace with the new one. - Replace with the new one.
5	The fork descends without the release valve worked.	- The impurities in the oil cause the release valve to be unable to close tight. - Some parts of hydraulic system is cracked or bored. - Air come into the oil. - Sealing parts worn or damaged. - The adjusting nut (D615) or the screw(234) is not in the correct position.	- Replace with new oil. - Inspect and replace the waste parts. - Banish the air. (See item 3.4) - Replace with the new one. - Adjusting the nut (D615) or the screw (234). (See item 4.2)

NOTE: DO NOT ATTEMP TO REPAIR THIS STACKER UNLESS YOU ARE TRAINED AND AUTHORIZED TO DO SO.

Fig. 4

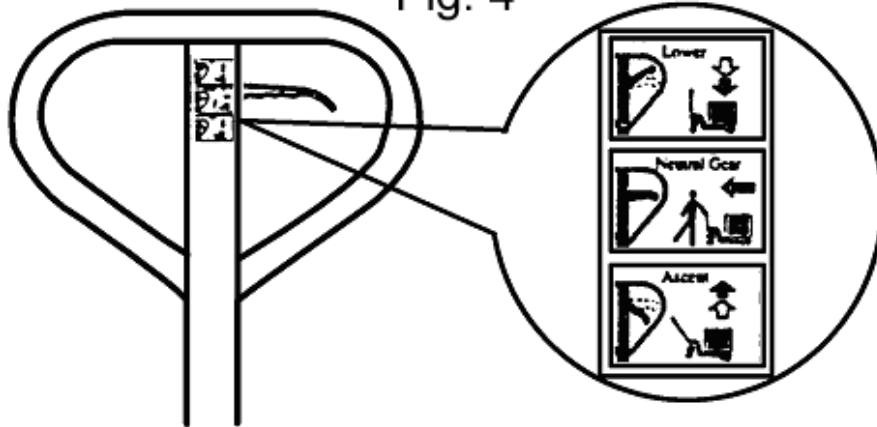
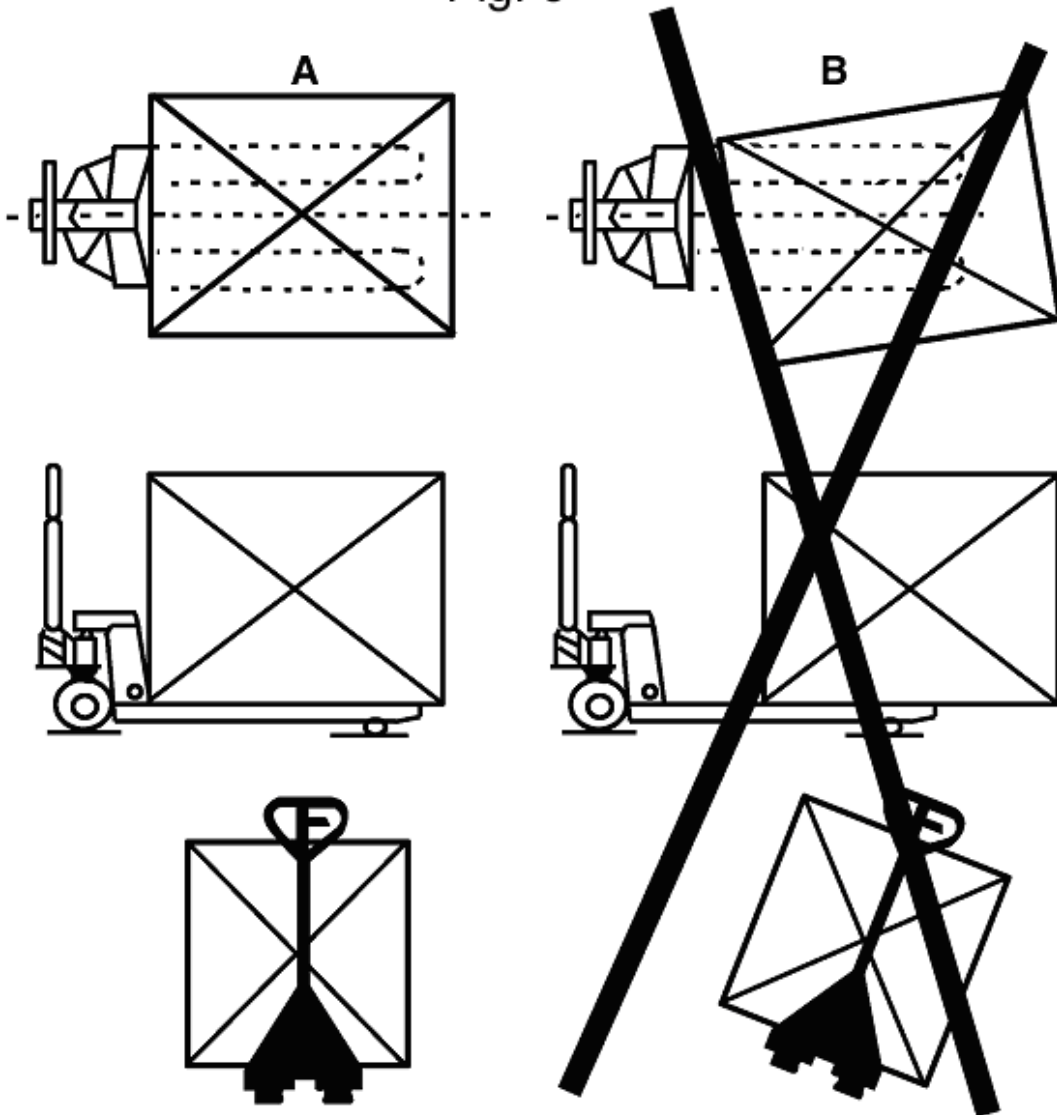
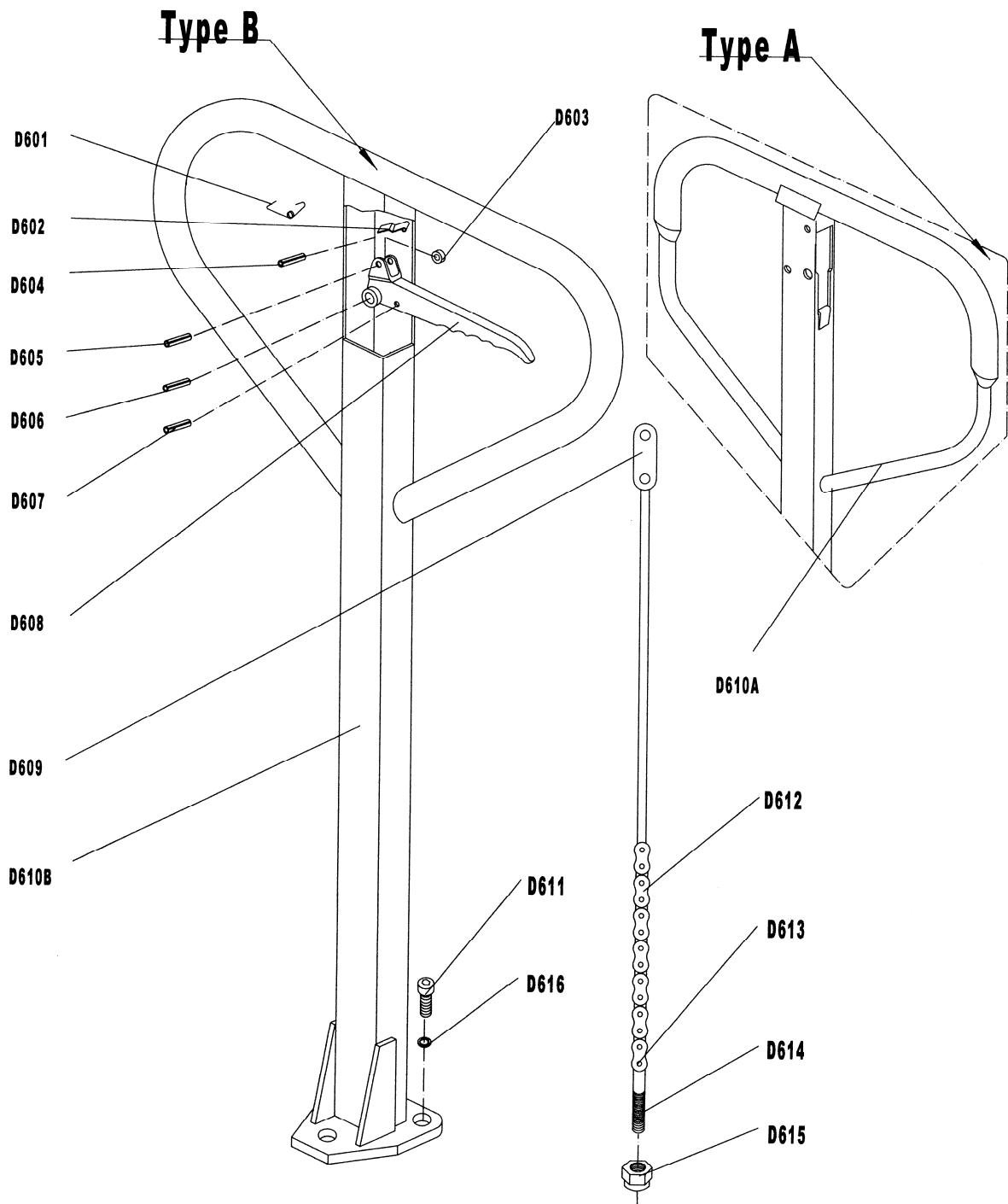


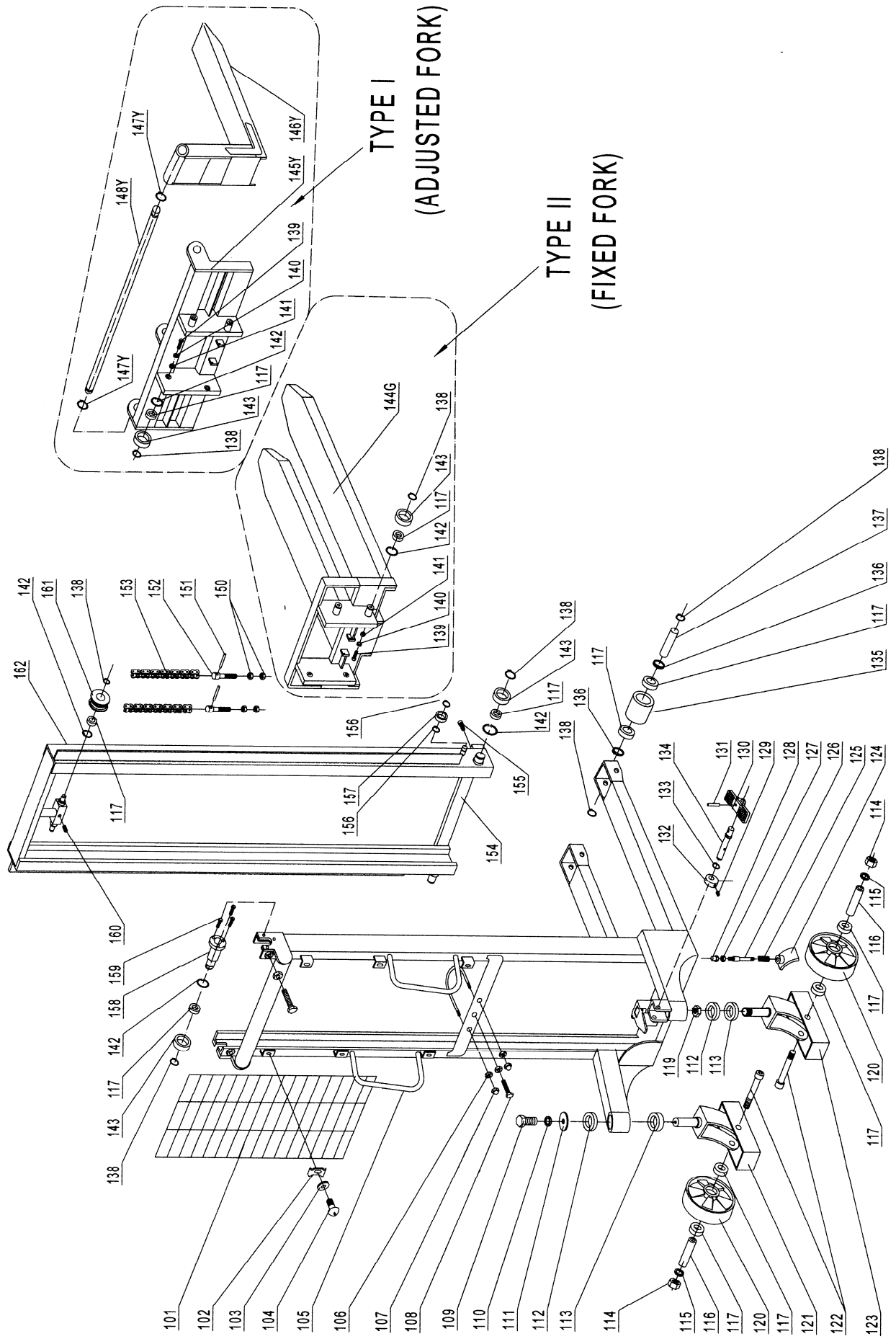
Fig. 5





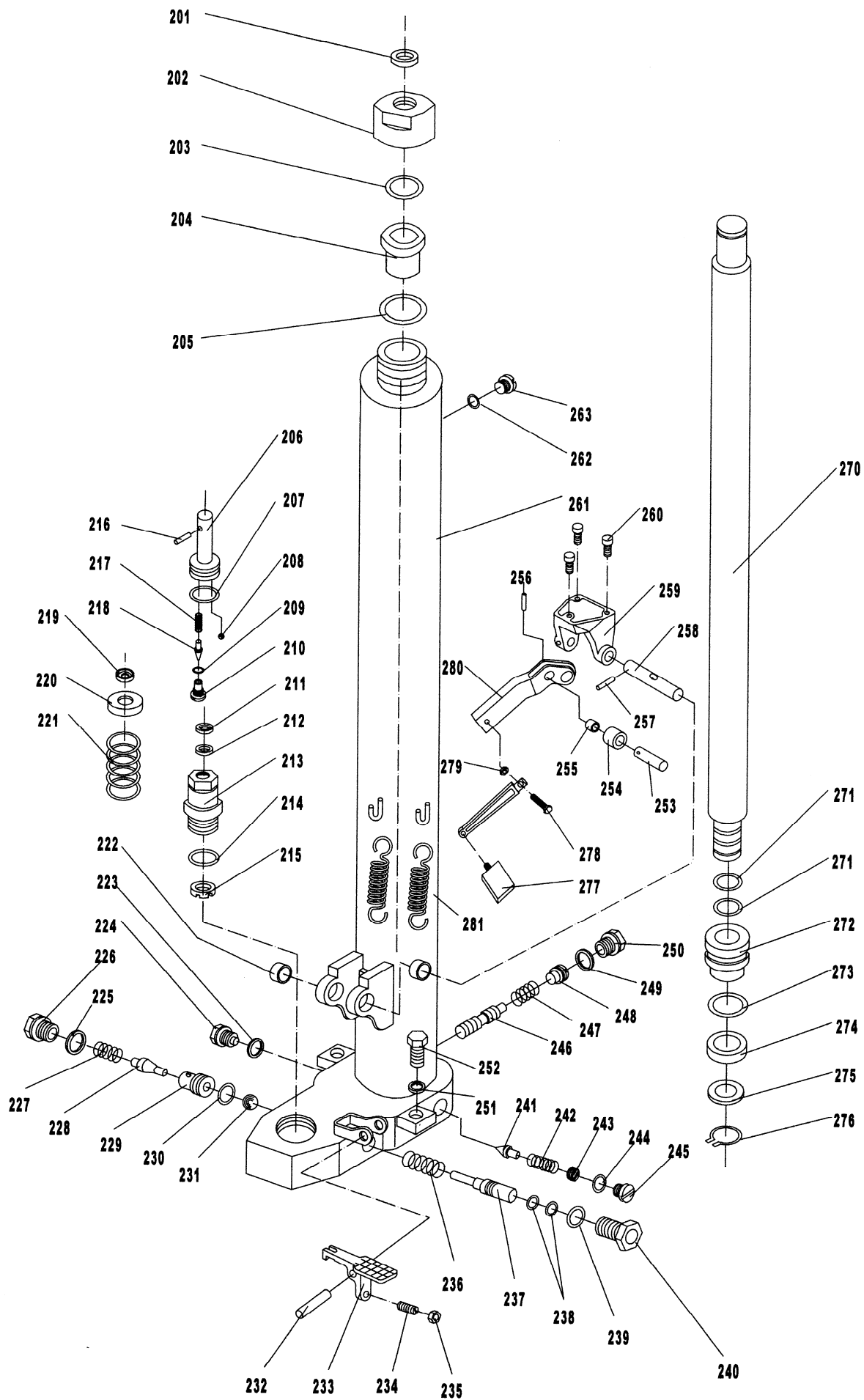
List of Handle

No.	Description	Qty.	Remark	No.	Description	Qty.	Remark
D601	Spring	1		D610B	Handle	1	For Type A
D602	Blade Spring	1		D610A	Handle	1	For Type B
D603	Roller	1		D611	Screw	3	
D604	Elastic Pin	1		D612	Chain	1	
D605	Elastic Pin	1		D613	Pin	1	
D606	Elastic Pin	1		D614	Adjusting Bolt	1	
D607	Elastic Pin	1		D615	Adjusting Nut	1	
D608	Control Handle	1		D616	Elastic Washer	3	
D609	Pull Board	1					



LIST of MAST

NO.	Description	Qty.	Remark
101	Reticulation	1	
102	Fixing Plate	6	
103	Washer	6	
104	Screw	6	
105Y	Mast	1	For TYPE I (Adjusted Fork)
105G	Mast	1	For TYPE II (Fixed Fork)
106	Nut	3	
107	Nut	2	
108	Bolt	1	
109	Bolt	1	
110	Elastic Washer	1	
111	Washer	1	
112	Bearing	2	
113	Bearing	2	
114	Nut	2	
115	Washer	2	
116	Axle	2	
117	Bearing	18	
119	Nut	1	
120	Wheel	2	
121	Frame of Wheel	1	
122	Screw	2	
123	Frame of Wheel with Brake	1	
124	Brake Plate	1	
125	Spring	1	
126	Bolt	1	
127	Nut	1	
128	Nut	1	
129	Screw	1	
130	Pedal	1	
131	Elastic Pin	1	
132	Cam	1	
133	Locking Ring	1	
134	Shaft	1	
135	Roller	2	
136	Washer	4	
137	Shaft of Roller	2	
138	Locking Ring for Axle	14	
139	Bolt	4	
140	Nut	4	
141	Steel Ball	4	
142	Locking Ring for Hole	10	
143	Roller	8	
144G	Fixed Fork	4	For TYPE II (Fixed Fork)
145Y	Frame of Fork	1	For TYPE I (Adjusted Fork)
146Y	Adjusting Fork	2	
147Y	Retaining Ring	2	
148Y	Long Axle	1	
150	Nut	4	
151	Pin	2	
152	Bolt	2	
153	Chain	2	
154	Linking Plate	1	
155	Screw	2	
156	Locking Ring for Axle	4	
157	Roller	2	
158	Axle with Flange	2	
159	Bolt	6	
160	Screw	1	
161	Roller for Chain	2	
162	Inner Mast	1	



List of PUMP

NO.	Description	Qty.	NO.	Description	Qty.
201	Dust Ring	1	242	Spring	1
202	Cover with Screw	1	243	Adjust Screw	1
203	O-Ring	1	244	O-Ring	1
204	Sleeve	1	245	Bolt	1
205	Seal Washer	1	246	Pin to Adjust Velocity	1
206	Pump Piston Rod	1	247	Spring	1
207	O-Ring	1	248	Adjust Screw	1
208	Steel Ball	1	249	Seal Washer	1
209	O-Ring	1	250	Bolt	1
210	Shaft	1	251	Elastic Washer	2
211	Dust Ring	1	252	Bolt	2
212	Seal	1	253	Shaft	1
213	Pumping Cylinder	1	254	Pressure Roller	1
214	O-Ring	1	255	Bushing	1
215	Washer	1	256	Elastic Pin	1
216	Pin	1	257	Elastic Pin	1
217	Spring	1	258	Axle with hole	1
218	Valve Spindle	1	259	Bracket	1
219	Cap of Pin	1	260	Bolt	3
220	Spring Cap	1	261	Body of Pump	1
221	Spring	1	262	Seal Washer	1
222	Bushing	2	263	Bolt	1
223	Seal Washer	1	264		
224	Bolt	1	265		
225	Seal Washer	1	266		
226	Bolt	1	267		
227	Spring	1	268		
228	Valve Spindle of Pump	1	269		
229	Seat of Pump Valve	1	270	Lifting Piston Rod	1
230	O-Ring	1	271	O-Ring	2
231	Steel Ball	1	272	Piston	1
232	Elastic Pin	1	273	O-Ring	1
233	Lever Plate	1	274	Seal	1
234	Screw	1	275	Washer	1
235	Nut	1	276	Locking Ring	1
236	Spring	1	277	Pedal	1
237	Release Valve Pin	1	278	Bolt	1
238	O-Ring	2	279	Nut	1
239	O-Ring	1	280	Lever of Pedal	1
240	Bolt	1	281	Spring	2
241	Safety Valve Spindle	1			