



Maxxyz Manager

Martin Professional A/S 2003-2006

Table of Contents

Foreword	0
Part I Maxxyz Manager	1
1 Introduction	1
2 Update Notes	2
3 Installation	6
4 Startup Screen	7
5 Maxxyz Manager Launcher	8
Part II Setup	9
1 Setup	9
2 Setup General	9
3 Setup Scheduler	11
4 Setup Astronomical	12
5 Setup RS-232	13
6 Setup Net Remote	17
Part III Scheduler	21
1 Scheduler	21
2 List of Schedules	25
3 Save Schedule	26
4 Scheduler Calendar Rules	27
5 Scheduler Calendar Explorer	29
Part IV Action	30
1 List of Actions	30
2 Save Action	31
3 Action Editor	32
4 Action Editor Executable	34
5 Action Editor Script	35
6 Action Items List	36
Part V How to...?	37
1 How to create a Schedule	37
2 How to create an Action Group	37
3 How to create a Calendar Rules	38
4 How to Load/Save data	38
5 How To Use the Web Server	39

6 Advanced tips	39
Index	41

1 Maxxyz Manager

1.1 Introduction

Introduction



Maxxyz Manager is an add-on application for the Martin Maxxyz Controller.

It can be used for various purposes from automation of an installation to live applications.

The Scheduler module can be used to automate an installation so certain events happen at a specific time and date.

[Maxxyz Manager](#)

[Installation](#)

[Update Notes](#)

[Setup](#) > [Startup](#) > [Astronomical clock](#) > [RS232](#) > [Telnet Remote](#) > [Web Remote](#)

[Scheduler](#) > [Calender Rules](#) > [Calender Explorer](#)

[Action Group Editor](#) > [RS232 Script](#) > [Running Executable](#)

[How to create an Action Group](#)

[How to create a Schedule](#)

[How to create Calendar Rules](#)

[How to backup/restore data](#)

[Advanced tips](#)

System Requirement

The Maxxyz Manager require the same Specification as for the Maxxyz software itself
See Martin Maxxyz Specification for details.

1.2 Update Notes

Maxxyz Manager History

1.2.9

Warning

Please do a backup of your Maxxyz Manager Data before

To facilitate the use with latest Maxxyz OS, Maxxyz Manager file Location has been relocated to the 'My Document/My Maxxyz Files'

When starting the Maxxyz Manager for the first time, all file will be moved to the new location.

This also means that reverting back to an earlier version of Maxxyz Manager will result in a empty data unless the files are moved back manually to

'All Users\Application Data\Martin Professional\Maxxyz\MaxxyzManager'

New Features

-Console Edition now use some new user interface to load and save files all from My Maxxyz Files folder

When importing a Maxxyz Manager file (MXM) from a external drive to a Maxxyz, first move the file using the Maxxyz File Management view and then Load in in Maxxyz Manager

Same goes to import HTML file into Maxxyz for the Maxxyz Manager Web Server, use the Maxxyz File Management view and copy the file to the folder 'My Maxxyz Files\MaxxyzManager\UserHTML'

-Few Cosmetic changes

1.2.8

New Features

New WebRemote command "Go To Cue" <GTQ>

This command allow a direct call to a cue in a cuelist

Example, to call cue #5 on cuelist 11 MXM_GTQ_11_5

1.2.7

Fixes

-Fix Error could happen when choosing cities in higher the +/-65 deg latitude

-Fix error with User Location List in Setup

-Fix Issue with TimeZone change not always been applied

-New Installer for Maxxyz Console using version 2.1.299.4 and above.

1.2.6

New Features

-Add possibility to change the time zone directly in the Setup page

Fixes

-The Application now works when installed on Maxxyz Console using version 2.1 and above.

1.2.4

New Features

-Include new example of Web Remote pages

Fixes

-Under certain conditions, the Calendar Rules would not save properly when closing the application.

1.2.3**Fixes**

-Fix issue with RS-232 Maxxyz Commands not begin received properly.

-Small GUI fixes

1.2.2**New Features**

-Save and load Calendar rules to file

-Calendar Explorer shows from which rule the resulting schedule is loaded.

-Add a new Disable Rule option in Calendar Rules, when disabled, the rule is ignored.

-Because of the new feature to disable rules, rules such as "Everyday" can now be use multiple times in the rules list.

-New Tray Icon with popup menu

-Option in Tray Icon menu to bring the application back to first monitor in case it was last use on the second monitor and this latter is not present.

-In Action Editor, Test Action button now send Serial Script and Executable commands.

-New buttons in Action Item list to call actions or trigger Maxxyz cuelist directly.

-Various GUI changes.

Fixes

-Fix issue with New "End of day offset" that under certain conditions wouldn't load the schedule.

-Fix Issue with Time Preset Sorting

1.2.1

- New Compiler D2006

- This version works with Maxxyz version 1.6.179 and higher

- However, previous version of Maxxyz Manager won't work with Maxxyz 2.0 and higher.

- The Graphic User Interface has receive several changes to facilitate the usage with touch screen

- Save Window control for Schedule has been move in within the Scheduler window.

- Save Window control for Action group has been move in within the Action Group Editor window.

- Action Item List window removed as it was duplicated in the Scheduler window.

- When trying to start a second instance of Maxxyz Manager while the current instance is minimized, it will be restored.

- Fix startup issue with Maxxyz and Maxxyz PC version 2.0 and higher.

- Fix "Save And Close" issue in the Action Group Editor.

Version 1.1.0**Warning!**

The file location has changed from previous versions.

A spelling mistake in the file path name cause the data to be saved in

'All Users\Application Data\Martin Professional\Maxxyz\MaxxyzManager'

While the path should have been

'All Users\Application Data\Martin Professional\Maxxyz\MaxxyzManager'

An extra 'r' was in 'Professional'.

When starting the Version 1.1.0 the previous data is automatically moved to the new location.

Users should not notice any differences in the Maxxyz Manager operation.

However, rolling back to a previous version will cause the data to appear as missing.

Therefore it is not recommended to roll back to previous version.

If for any reason this was needed, the data will have to be manually moved from the new location to the old one.

New Features

-Added a new option in the Scheduler Calendar to offset the "End of the Day" time where new schedule are loaded.

This is particular useful when show schedule start before midnight but ends after midnight.

Example: you have a special schedule for Saturday night where a show finish at 2:00 AM. the problem is that 2:00AM is now Sunday so you have to make a special schedule for Sunday as well.

By putting an offset of 3 Hours, the Sunday Schedule will only load at 3:00 AM leaving the possibility to have show stop on the Saturday Schedule.

Fixes

-Start Schedule Commands now works as intended

Improvement

-It's now possible to specify a Action number when saving a Action Group.

Leaving 0 as Action number will let the application find the next number available.

Version 1.0

Fixes

- Changing event Types on scheduler set the offset to 0
- Schedule Start commands are now ignore when use as action in a schedule to avoid loops
- Calendar explorer colors are correct when using Maxxyz Theme
- Calendar Explorer open to current date

Improvement

- Faster Cuelist retrieval procedure

Version 0.8.7

New

- Added Delay on Application Startup Action

Fixes

- Action Group Editor now display the Executable name in the filed as expected;

Version 0.8.6

Fixes

- Fix issue with Maxxyz PC running detection after Maxxyz PC was restarted
- Improve resources usage when Scheduler is running

Version 0.8.5

New Features

- New Startup screen with Load Show capability
- New Menu items in Main screen to Load, Save and New show.

Scheduler

- New option is Scheduler (Schedule Menu) to start the schedule without tracking through the events to call actions on Maxxyz
- -New Option to start Scheduler without doing the startup action.

Version 0.7.0**New Features**

- New Calendar rules
 - Every Odd Day
 - Every Even day
 - Every Friday to Sunday
 - Every Friday and Saturday

Fixes

- Some windows default size were too small

Version 0.6 beta

- New Compiler D2005
- Fix issues with Calendars Rules Editor

New addition to the Telnet command list

- **TimePresetList** [TimePresetList] -Return a list of time preset
- **SetTimepreset** [SetTimepreset] -Set the time of a Time Preset No,H,M,S (24 hours values)
Example timepreset 1,16,55,30 will set time preset 1 @ 4:55:30 PM
- **SchUseCalendar** [SchUseCalendar] -Set the Scheduler to use the Calendar Rules
- **SetDate** [SetDate] -Set the Remote computer date (setdate YYYY,MM,DD)
Example setdate 2006,07,30 will set the date for July 30 2006
- **SetTime** [SetTime] -Set the Remote computer time (settime HH,MM,SS) is 24 hours format
Example settime 19,13,30 will set the time for 7:13:30 PM
- **SetPosDec** [SetPosDec] -Set the geographical position in decimal value (setposdec Latitude,N or S,Longitude,E or W)
Example setposdec 45.5,N,34.3,E
- **SetPosDMS** [SetPosDMS] -Set the geographical position in degree,minute,second value (setposdms DD,MM,SS,N or S,DD,MM,SS,E or W)
Example setposdms 45,30,00,N,34,15,00,W

Version 0.5 beta First official Beta release**List of Telnet commands**

- **ACT** [ACT #] -Action Group = where # is the Action Group Number
- **ActList** [ActList] -Will return the Maxxyz Manager Action List
- **ActName** [ActName #] -Will return the name of Maxxyz Manager Action name
- **BYE** [Bye] -Disconnect from server
- **CLRCLR** [CLRCLR] -Clear+Clear (clear the programmer)
- **CMD** [CMD #] -Internal Command where # is the Command Number
- **CmdList** [CmdList] -Will return the Maxxyz Manager Command List
- **CmdName** [CmdName #] -Will return the name of Maxxyz Manager Command name #
- **GQL** [GQL #] -Go Cuelist where # is the Cuelist Number

- **GSC** [GSC #] -Go Schedule where # is the Schedule Number
- **GTQ** [GTQ #,#] -Go to Cuelist where first # is the Cuelist Number and second is the cue number
- **Help** Displays commands that the servers supports.
- **IsMxRun** [IsMxRun] -Will return the state of Maxxyz (Yes or No)
- **IsQLActive** [IsQLActive #] -Will return the state of Qlist # (Yes or No)
- **IsSchRun** [IsSchRun] -Will return the Scheduler state (yes or no)
- **Lastlog** [LastLog #] -Retrun the number of specified log lines starting from the end
Example, LastLog 10 will return the 10 last entry in the log. (300 Lines max)
- **PQL** [PQL #] -Pause Cuelist where # is the Cuelist Number
- **QLActive** [QLActive] -Will return a list of the current active cuelist
- **QLList** [QLList] -Will return a list of the avaialbe Cuelist
- **QLName** [QLName #] -Will return the name of Maxxyz Cuelist #
- **RAO** [RAO] -Release All Override
- **RAQL** [RAQL] -Release All Cuelist
- **RAQLDF** [RAQLDF] -Release All Cuelist Dimmer First
- **RAQLO** [RAQLO] -Release All Cuelist and Override
- **RAQLODF** [RAQLODF] -Release All Cuelist and Override Dimmer First
- **RQL** [RQL #] -Release Cuelist where # is the Cuelist Number
- **SchList** [SchList] -Will return the Maxxyz Manager Schedule List
- **SchName** [SchName #] -Will return the name of Maxxyz Manager Schedule name #
- **Status** [Status] -Will return a status report
- **WhoIAm** [WhoIAm] -Will Return your IP Address used to login on that server

List of Web Command

- **MXM_GQL** [MXM_GQL_#] -Go Cuelist where # is the Cuelist Number
- **MXM_RQL** [MXM_RQL_#] -Release Cuelist where # is the Cuelist Number
- **MXM_PQL** [MXM_PQL_#] -Pause Cuelist where # is the Cuelist Number
- **MXM_SCH** [MXM_SCH_#] -Load Schedule where # is the Schedule Number
- **MXM_CMD** [MXM_CMD_#] -Call Internal Command where # is the Action Number
- **MXM_ACT** [MXM_ACT_#] -Call Action where # is the Action Number

1.3 Installation

Installing the Maxxyz Manager is simple.

Run the Setup application and simply follow the installation procedure step by step. We suggest that you use the default installation path, but if needed, the Maxxyz Manager can be installed anywhere you want on your hard drive.

Start Maxxyz and you should now see a new menu item in the top menu <**Maxxyz Manager**>

From this menu you can launch Maxxyz Manager.

1.4 Startup Screen



New Manager Data

To start a new Maxxyz Manager configuration.
A prompt will ask to save current data.(PC version only)

Load Manager Data...

To load a Maxxyz Manager configuration from a file.
A prompt will ask to save current data. (PC version only)
(The file extension is MXM)

Save Manager Data...

To save current Data to a file for backup and moving the file to another system

Cancel

Close this program.

Continue

Continue with current data.

Auto Continue

When check the Maxxyz Manager will start automatically within 15 sec
Pressing any other buttons will cancel the auto launch

1.5 Maxxyz Manager Launcher



From the Maxxyz Manager Launcher, you can access most of the application modules.

- [Scheduler](#)
- [Scheduler Calendar](#)
- [Action Editor](#)

System menu

- Restore All Windows
All minimized windows are restored
- Hide All Windows
Will simply hide all open windows, use tray icon to restore the windows...
- Close All Windows

Will simply close all open windows except the main form

Exit
Exit the Application

View menu

- [Show Scheduler](#)
- [Show Scheduler Calendar](#)
- [Show Action Editor](#)
-
- Show/Hide Information Bar
This option shows or hides the status panel in the main form

Setup

Click on setup to open the application [setup form](#)

Help

Opens this file

2 Setup

2.1 Setup

Use Setup to configure the various settings of Maxxyz Manager

[General](#)

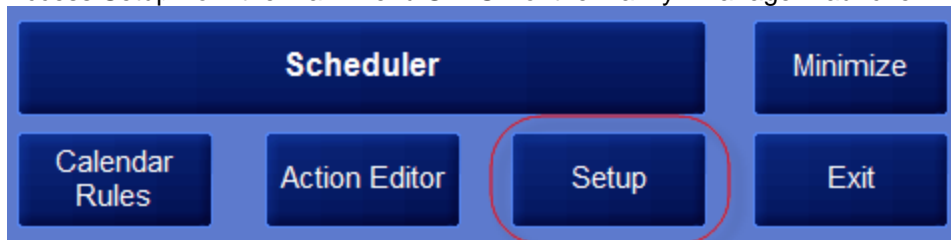
[Setup Scheduler](#)

[Setup Astronomical Clock](#)

[RS-232](#)

[Net Remote](#)

Access Setup from the main menu SETUP of the Maxxyz Manager Launcher



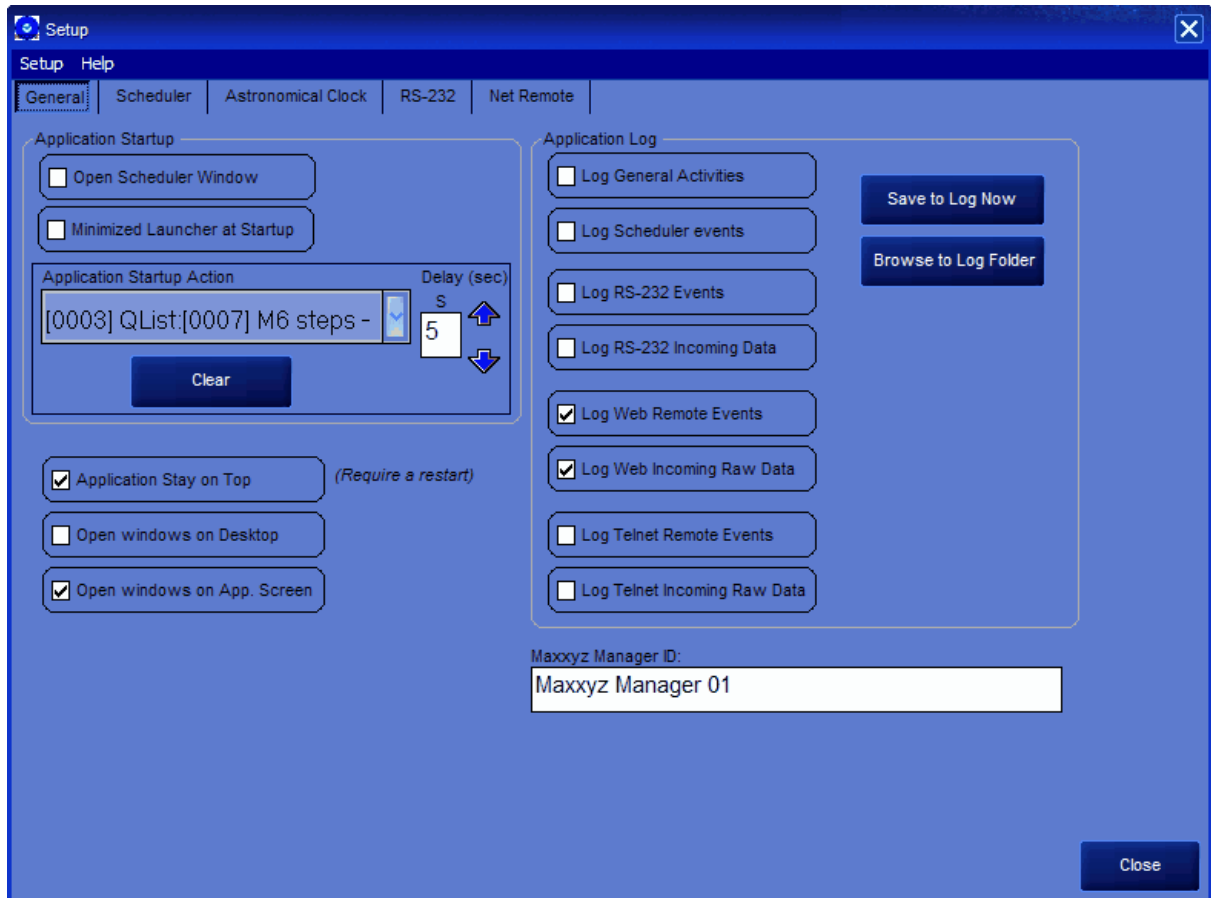
2.2 Setup General

[Setup Scheduler](#)

[Setup Astronomical Clock](#)

[RS-232](#)

[Net Remote](#)



Application Startup

Select the windows you want to have open when the application starts

Application Startup Action

Select an Action to be called when the Application starts.

A delay can be applied before the Startup action is called.

You can use this setting to automatically open a call a cuelist on startup or call an action that will open a window for example.

Minimized Launcher at Startup

When enable, the Launcher (main screen) will be minimized to system tray at application startup

Application Stay On Top

Use this setting to keep the application on top of other open applications even if not in focus.

Open Windows on Desktop

The window will be on the main desktop of the computer. Useful when switching from multi monitor to single monitor setup or when the computer screen resolution is switched to a smaller resolution

Open Windows on App. Screen

Use this setting to force windows to open on the same monitor as the application main form.

Application Log

Activities on the Maxxyz Manager can be logged into a log file (simple text file)

Select the activities section you need to monitor.

A new Log file is created every time the Maxxyz Manager is started or when it reaches 10,000 lines or around 300Kb

Use the log mainly for debugging or tracking events

Save to Log Now

Press this button to have the Log file stored immediately, usually, the log is stored when the application is closed or when the log file exceeds 200Kb

Browse to Log Folder

Press this button to open Windows Explorer to the folder where all log files are stored

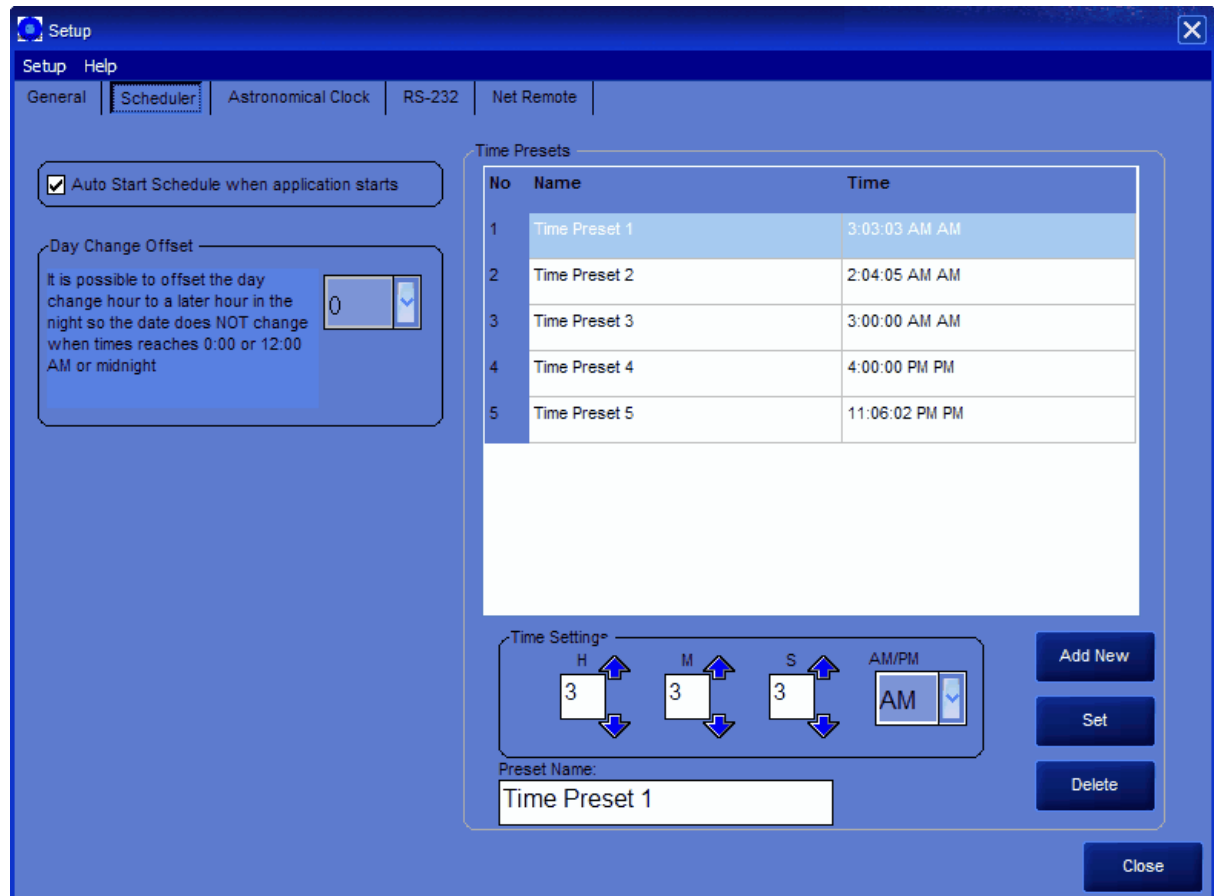
2.3 Setup Scheduler

[General](#)

[Setup Astronomical Clock](#)

[RS-232](#)

[Net Remote](#)



Scheduler Startup

Select the items to be clear or release when the Scheduler starts.

This is to ensure that the Maxxyz is not overriding something and prevent the show from running properly

Auto Start Schedule

When enabled, the scheduler will automatically start when the application starts and Maxxyz is ready to receive commands.

End Of Day Offset

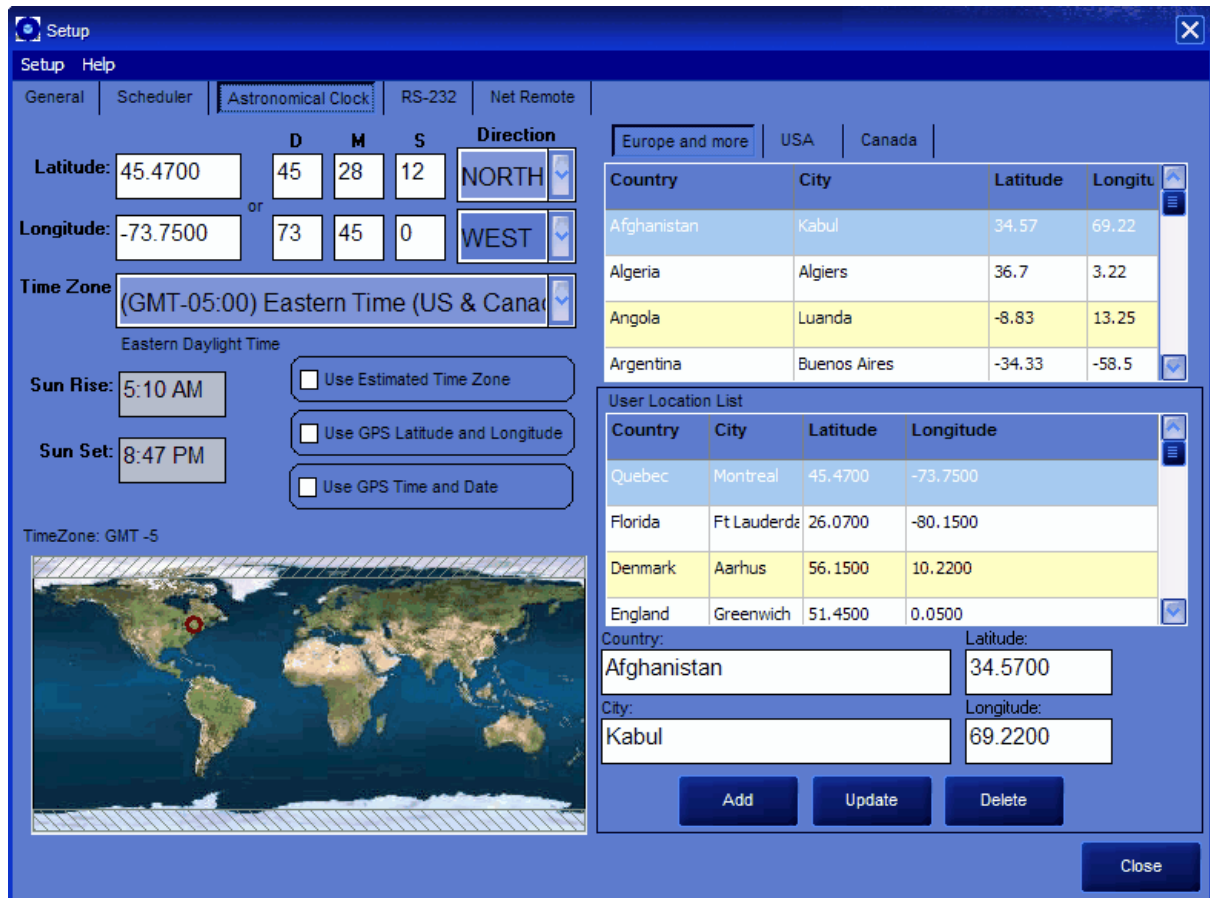
Option in the Scheduler Calendar to offset the "End of the Day" time where new schedule are loaded. This is particular useful when show schedule start before midnight but ends after midnight.

Example: you have a special schedule for Saturday night where a show finish at 2:00 AM. the problem is that 2:00AM is now Sunday so you have to make a special schedule for Sunday as well.

By putting an offset of 3 Hours, the Sunday Schedule will only load at 3:00 AM leaving the possibility to have show stop on the Saturday Schedule.

2.4 Setup Astronomical

- [General](#)
- [Setup Scheduler](#)
- [RS-232](#)
- [Net Remote](#)



The Astronomical clock system is fairly simple. It simply uses the date, time zone, longitude, latitude

to calculate the sunset and sunrise times for the specified location.

Knowing the sunset and sunrise times can be helpful to automate an installation so the lights are only working when needed.

On the right side, a database of most cities in the world will help you to find the longitude and latitude for your city.

A double-click on one of the cities will copy the coordinates to the left side input fields

However, if the location you are looking for is not in the database, it is possible to add it to your own user database.

On the bottom left of the screen you will find links to websites where you can search for your location.

You can also click on the world map to set your location (although it is not a very precise way of find a location it can help)

- **Use Estimated Time Zone**

Use this option if the time zone settings of the computer cannot match the actual one.

- Example, the installation is on a cruise ship, so you rely on a GPS to get the coordinates

- **Use GPS Latitude and Longitude**

When enabled, the Longitude and Latitude will be retrieved from the [GPS input](#)

- **Use GPS Time and Date**

When enabled, the Time and Date will be retrieved from the [GPS input](#)

ADD

Adds an entry to the user database

Update

Updates the current user database entry with what is on the user fields

Delete

Deletes the current user database entry

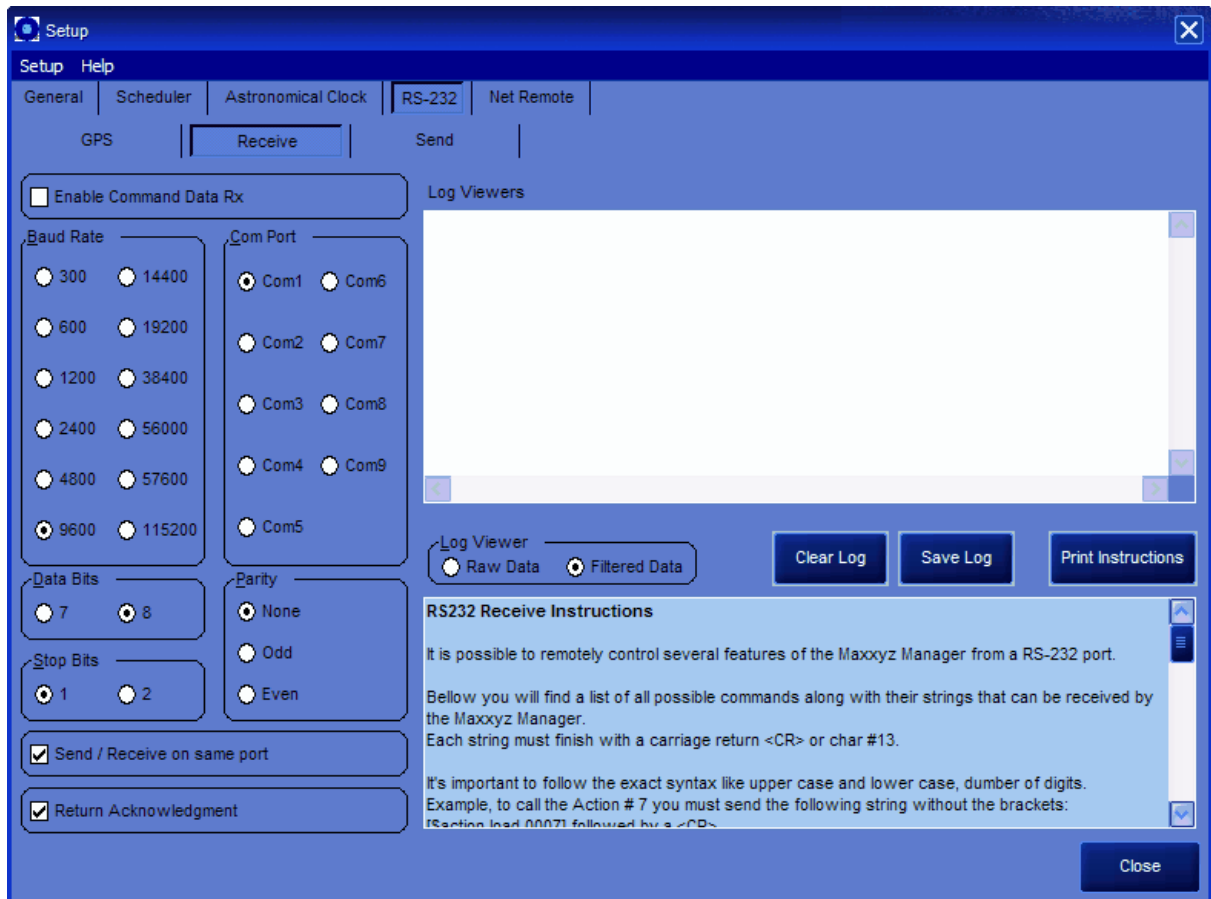
2.5 Setup RS-232

[General](#)

[Setup Scheduler](#)

[Setup Astronomical Clock](#)

[Net Remote](#)



The RS-232 tab also contains 3 other pages

GPS
Receive
Send

Each of these pages has very similar settings.

Enable...

Use this to enable the com port
 If the settings are not good or the com port is already busy an error will appear.

Baud Rate

Select the appropriate baud rate for the com port
 9600 is a standard

Com Port

Select the appropriate com port

Parity

Most of the time this is set to None

Data Bits

Most of the time this is set to 8

Stop Bits

Most of the time this is set to 1

Send/Return on same port

Most of the time this setting will be enabled, but it is possible that you want to send data on a separate port to the receiver port

Return Acknowledgement

When a command is received by the application a string message will be sent back to the sender.

RS232 Receive Instructions

It is possible to remotely control several features of the Maxxyz Manager from a RS-232 port.

Bellow you will find a list of all possible commands along with their strings that can be received by the Maxxyz Manager.

Each string must finish with a carriage return <CR> or char #13.

It's important to follow the exact syntax like upper case and lower case, dumber of digits.

Example, to call the Action # 7 you must send the following string without the brackets:

[\$action,load,0007] followed by a <CR>

<CR> can be express as #13 or #X0D

RS-232 Receive Command List

Command	String to send
Load action #	\$act,load,0000
Maxxyz Go Cuelist #	\$mx,gql,00000
Maxxyz Pause Cuelist #	\$mx,pql,00000
Maxxyz Release Cuelist #	\$mx,rql,00000
Load Schedule specific schedule #	\$sch,load,0000
Start Schedule	\$sch,start
Stop Schedule	\$sch,stop
Use Calendar Schedule	\$sch,usecalendar
Set Preset Time (Preset No, Hour,Minute,Second)	\$timepreset,000,00,00,00
Set Position Decimal (Lat,N,Long,W)	\$posdec,00.0000,N,000.0000,W
Set Position DMS (Lat D,M,S,N,Long D,M,S,W)	\$posdms,00,00,00,N,000,00,00,W
Set Time (Hr, Min, Sec) (24 hours)	\$time,00,00,00
Set Date (day,month,year)	\$date,00,00,0000

RS-232 Send

String of any format can be sent, simply create or edit an Action and in the tab MISC. you will be able to create a script to be sent via the RS232.

RS-232 command syntax

ASCII character strings

Characters sent from Maxxyz Manager are converted into individual ASCII character values before transmitting the RS-232 command. E.g. the command-string "Command123" sent from Maxxyz is translated into the following binary values: [67][111][109][109][97][110][100][49][50][51], and the command-string "123" is translated into [49][50][51]

Decimal values

Use # to indicate that the values following is to be considered a decimal value.
E.g. the command string "#123#1#2#3" is translated into [123][1][2][3], and "Test#1#2

#3" is translated into [84][101][115][116][1][2][3]. Valid decimal values are in the range of 0 to 255.

Hexadecimal values

Use #X to indicate that a hexadecimal value is following.

E.g the command string "#X00#X01#XFF" is translated into [0][1][255], and "Test#X01#XFF" is translated into [84][101][115][116][1][255]. Valid hexadecimal decimal values are in the range of 00 to FF and hexadecimal values must always be written as two characters (#X1 is not valid #X01 is).

Special Characters

Since # is used to indicate that the value following is a decimal or hexadecimal value the only way to send the ASCII value of # (decimal 35) is to send it as a decimal or hexadecimal value (35 or 0x23). E.g. to send the string "#TEST" to a RS-232 device use the following command: "#35TEST" or to send the string "!TEST" to a RS-232 device use the following command: "#33TEST"

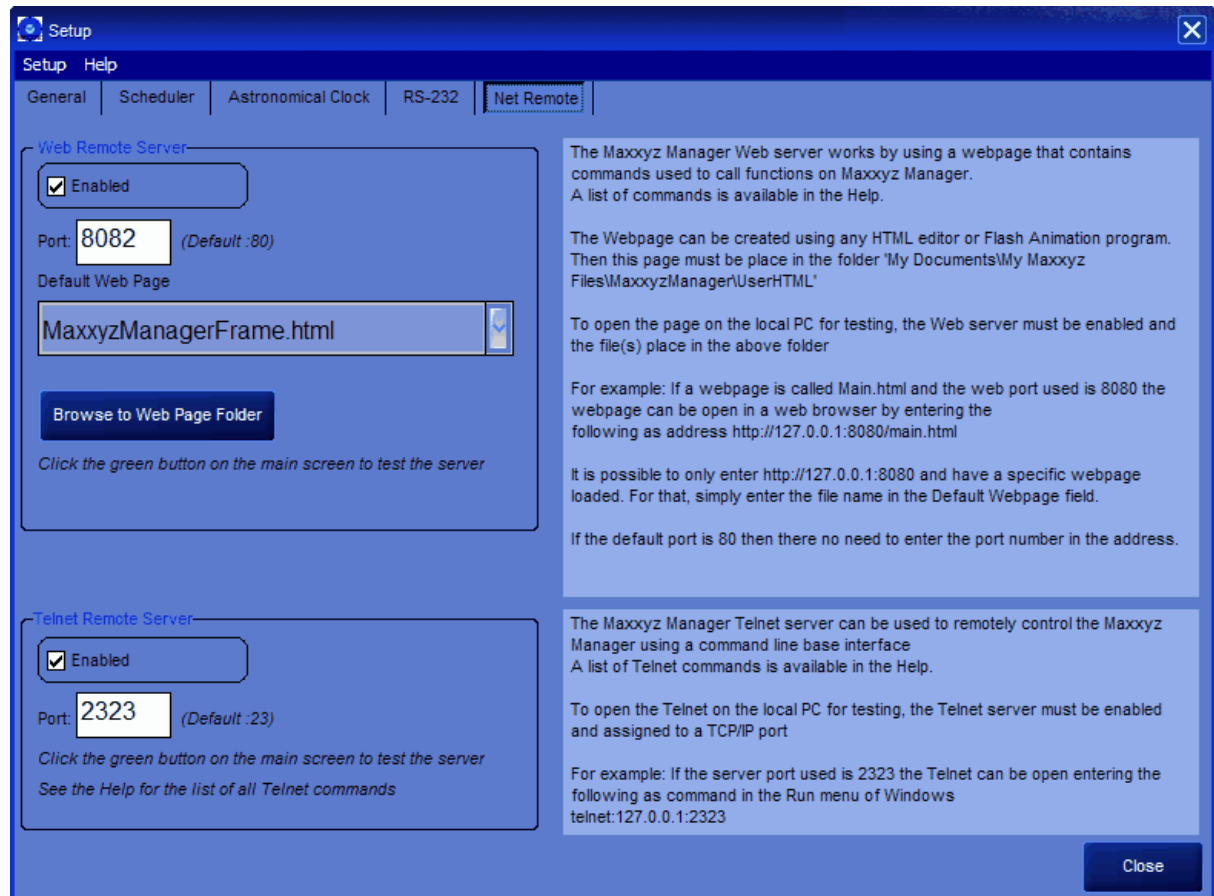
2.6 Setup Net Remote

[General](#)

[Setup Scheduler](#)

[Setup Astronomical Clock](#)

[RS-232](#)



Web Remote Server

Use the Web Remote Server to control the Maxxyz/Maxxyz Manager over a network or Web.

The Maxxyz Manager Web server works by using a webpage that contains commands used to call functions on Maxxyz Manager.

A list of commands is available bellow

The Webpage can be created using any HTML editor or Flash Animation program.

Then this page must be place in the folder

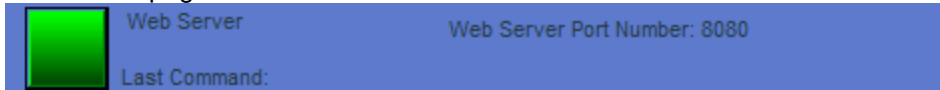
'My Documents\My Maxxyz Files\MaxxyzManager\UserHTML'

To open the page on the local PC for testing, the Web server must be enabled and the file(s) place in the above folder

If the default port is 80 then there no need to enter the port number in the address.

Do not try to open the file directly in web browser from Windows Explorer. This will not work as the file must be open through the Maxxyz Manager Web Server.

By clicking on the green LED in the Web server Par on the Maxxyz Manager Launcher will open the default web page in the local browser.



Port

Default HTML port is 80, but it can be changed to any number between 1 and 65535 However certain port are reserved such as Port 21 is use for FTP server.

The port numbers are divided into three ranges: the Well Known Ports, the Registered Ports, and the Dynamic and/or Private Ports.

The Well Known Ports are those from 0 through 1023.

The Registered Ports are those from 1024 through 49151

The Dynamic and/or Private Ports are those from 49152 through 65535

Complete list can be found here <http://www.iana.org/assignments/port-numbers>

The port number must not be used by other application such as Windows Web Server or some telephony application like Skype who use Port 80 to transmit data.

Default Web Page

Once you have build some web page, you can assign one page as default

This page will be loaded when the Web Server root is access

Example if the default page is "TouchPanel_0001.html",

Address `http://127.0.0.1` or `http://127.0.0.1/TouchPanel_0001.html` will browse to the same page.

Browse to Web Page Folder

Press this button to open Windows Explorer to the folder where all HTML files are stored.

HTML Commands

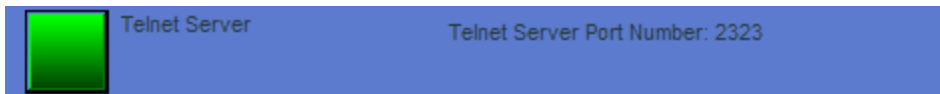
To activate something on the Maxxyz Manager, it is necessary to have the proper syntax. All Commands start by **?MXM_** followed by the action type and then action number

Example, to call Action 17 the command would be **?MXM_ACT_17**

Example, to call cue 5 on cuelist 11 **?MXM_GTQ_11_5**

List of Web Command

- **MXM_GQL** [MXM_GQL_#] -Go Cuelist where # is the Cuelist Number
- **MXM_GTQ** [MXM_GTQ_QL#_Q#] -Go to a specific cue of a Cuelist where QL# is the Cuelist Number and Q# is the Cue number
- **MXM_RQL** [MXM_RQL_#] -Release Cuelist where # is the Cuelist Number
- **MXM_PQL** [MXM_PQL_#] -Pause Cuelist where # is the Cuelist Number
- **MXM_SCH** [MXM_SCH_#] -Load Schedule where # is the Schedule Number
- **MXM_CMD** [MXM_CMD_#] -Call Internal Command where # is the Action Number
- **MXM_ACT** [MXM_ACT_#] -Call Action where # is the Action Number



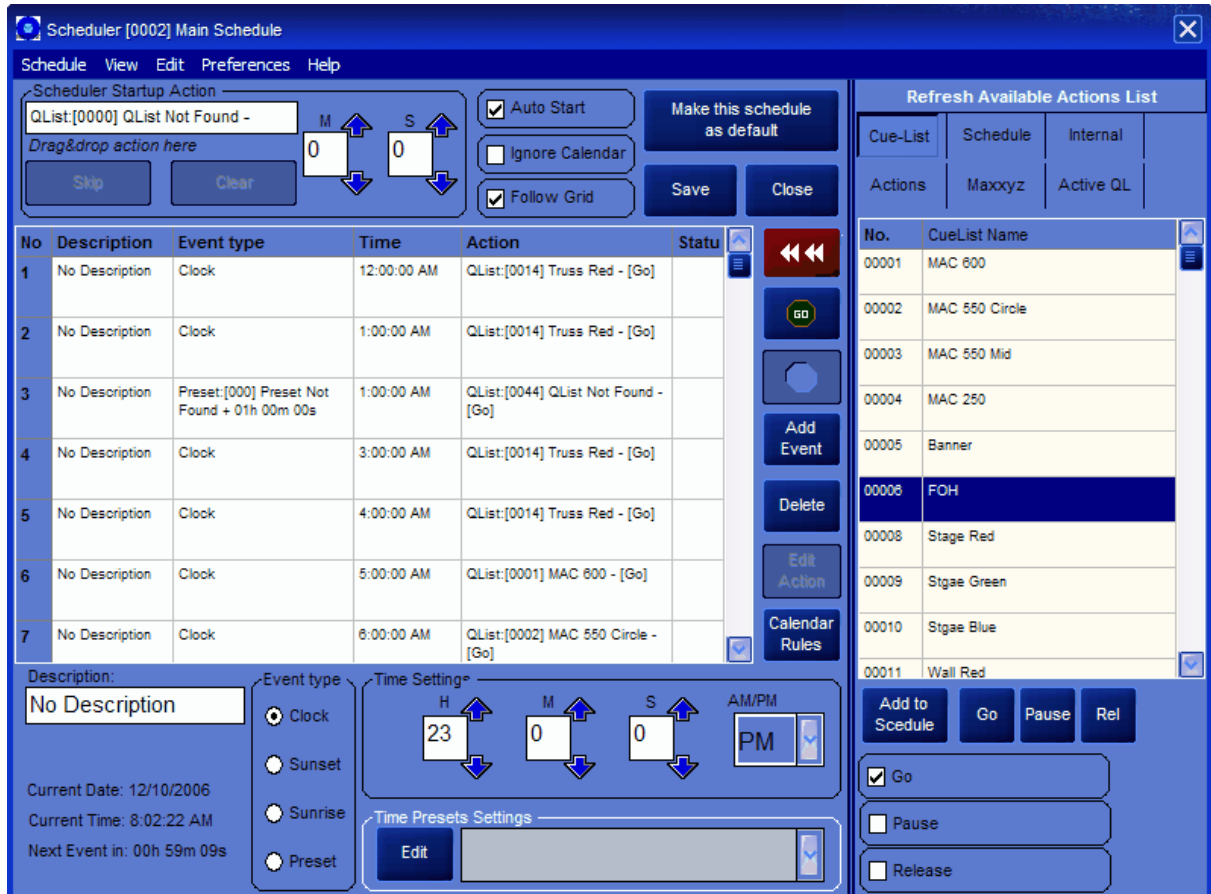
List of Telnet commands

- **ACT** [ACT #] -Action Group = where # is the Action Group Number
- **ActList** [ActList] -Will return the Maxxyz Manager Action List
- **ActName** [ActName #] -Will return the name of Maxxyz Manager Action name
- **BYE** [Bye] -Disconnect from server
- **CLRCLR** [CLRCLR] -Clear+Clear (clear the programmer)
- **CMD** [CMD #] -Internal Command where # is the Command Number
- **CmdList** [CmdList] -Will return the Maxxyz Manager Command List
- **CmdName** [CmdName #] -Will return the name of Maxxyz Manager Command name #
- **GQL** [GQL #] -Go Cuelist where # is the Cuelist Number
- **GSC** [GSC #] -Go Schedule where # is the Schedule Number
- **GTQ** [GTQ #,#] -Go to Cuelist where first # is the Cuelist Number and second is the cue number
- **Help** Displays commands that the servers supports.
- **IsMxRun** [IsMxRun] -Will return the state of Maxxyz (Yes or No)
- **IsQLActive** [IsQLActive #] -Will return the state of Qlist # (Yes or No)
- **IsSchRun** [IsSchRun] -Will return the Scheduler state (yes or no)
- **Lastlog** [LastLog #] -Retrun the number of specified log lines starting from the end
Example, LastLog 10 will return the 10 last entry in the log. (300 Lines max)
- **PQL** [PQL #] -Pause Cuelist where # is the Cuelist Number
- **QLActive** [QLActive] -Will return a list of the current active cuelist
- **QLList** [QLList] -Will return a list of the avaiable Cuelist
- **QLName** [QLName #] -Will return the name of Maxxyz Cuelist #
- **RAO** [RAO] -Release All Override
- **RAQL** [RAQL] -Release All Cuelist
- **RAQLDF** [RAQLDF] -Release All Cuelist Dimmer First
- **RAQLO** [RAQLO] -Release All Cuelist and Override
- **RAQLODF** [RAQLODF] -Release All Cuelist and Override Dimmer First

- **RQL** [RQL #] -Release Cuelist where # is the Cuelist Number
- **SchList** [SchList] -Will return the Maxxyz Manager Schedule List
- **SchName** [SchName #] -Will return the name of Maxxyz Manager Schedule name #
- **Status** [Status] -Will return a status report
- **WhoIAm** [WhoIAm] -Will Return your IP Address used to login on that server
- **TimePresetList** [TimePresetList] -Return a list of time preset
- **SetTimepreset** [SetTimepreset] -Set the time of a Time Preset No,H,M,S (24 hours values)
Example timepreset 1,16,55,30 will set time preset 1 @ 4:55:30 PM
- **SchUseCalendar** [SchUseCalendar] -Set the Scheduler to use the Calendar Rules
- **SetDate** [SetDate] -Set the Remote computer date (setdate YYYY,MM,DD)
Example setdate 2006,07,30 will set the date for July 30 2006
- **SetTime** [SetTime] -Set the Remote computer time (settime HH,MM,SS) is 24 hours format
Example settime 19,13,30 will set the time for 7:13:30 PM
- **SetPosDec** [SetPosDec] -Set the geographical position in decimal value (setposdec Latitude,N or S,Longitude,E or W)
Example setposdec 45.5,N,34.3,E
- **SetPosDMS** [SetPosDMS] -Set the geographical position in degree,minute,second value (setposdms DD,MM,SS,N or S,DD,MM,SS,E or W)
Example setposdms 45,30,00,N,34,15,00,W

3 Scheduler

3.1 Scheduler



A prompt will ask to save current data

Scheduler is a 24 hour based list of events.

Each event can be set to use the normal PC clock or to use sunset, sunrise or preset times.

Sunset, sunrise and preset times can be offset

For an event to occur 1 hour before sunset, you can set the offset to -1 hour.

The Grid displays the events in the current schedule.

Description:

This field is optional, Enter any text you want here to describe the event...

Event Type



Display the event type chosen (Clock, Sunset, Sunrise or Preset)
 When sunset, sunrise or Preset is chosen it also displays the time offset value.

Clock

The time of the event is base on a specific set time.

Sunset

The Event will be trigger according the current day Sunset

Sunrise

The Event will be trigger according the current day Sunrise

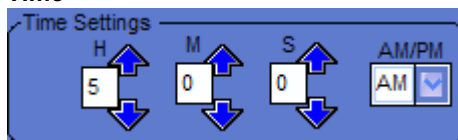
Preset

The Event will be trigger according a preset time set by the user in the [Scheduler Setup](#)
 preset can be use to change globally a time... Example, the Opening of an location is usually 9:00AM so
 you could set a preset called Opening for 9:00AM

Use that preset when ever you want to trigger an event at the Opening...

Now, if the opening time was ever to change to 8:30AM, a simple change to the preset will change the time
 of all the schedule that use this preset...

Time



This field shows the time at which the event will happen.

Note: When using sunset or sunrise type events, this time value is relative to the date and geographical position set in the setup.

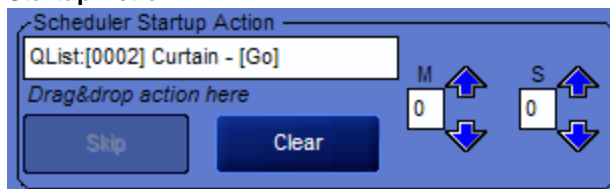
Action

The Action field displays the chosen Action.

The Action can be dragged and dropped from the Action list window.

If the selected event is an action group, it can be edited , simply right-click on the grid and choose **Edit Current Event Action**

Startup Action



Use this feature to have an action called every time the Scheduler start

For example, this is useful if you want to have a Lamp ON command to be sent for a specific period of time when the schedule starts.

n	Sunset - 00h 00m 10s	09:22:01 PM	[0000] No Action
n	Sunset - 00h 00m 05s	09:22:06 PM	[0000] No Action
n	Sunset - 01h 00m 00s	10:22:11 PM	[0000] No Action
n	Sun		
n	Sun		.1 P

StartUp:6.1 sec

Auto Start

Auto Start

This option **must be enabled** if you want the Scheduler to automatically start when Maxxyz Manager starts.

Ignore Calendar

Ignore Calendar

Use this option to test schedule without having the calendar settings loading the current schedule according to the calendar rules

Follow Grid

When the schedule is running the current event line remain in view

Make This Schedule Default - Use this button to have the current schedule as default schedule (no use of the Calendar rules)

Make this
schedule
Default

New Schedule

New

Open List of Schedules

Load

Open Save Schedule Dialog

Save

Add Event to schedule

Add
Event

Delete selected Event from Schedule

Delete

Edit Current Event Action

Edit
Action

Open Calendar Rules editor



Start Schedule



Stop Schedule



From the main menu

Go

Start Schedule with Startup Action first

Go (Without Startup Action)

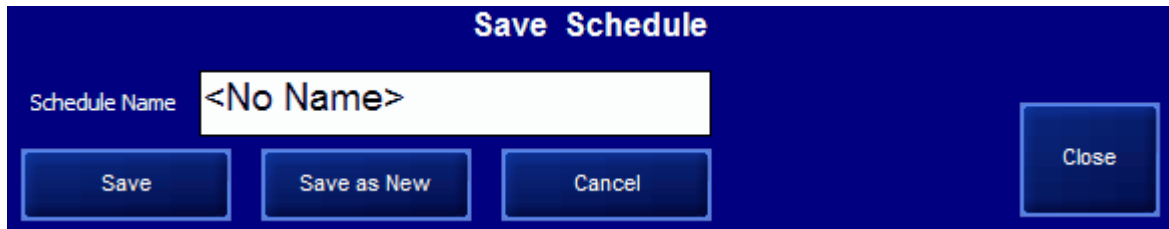
Start Schedule without using the Startup Action first

Go (Without Tracking)

Start Schedule without tracking through all the events and calling there actions until the time of the day is met,

Use this option to restart the Schedule in the middle of operation...

3.3 Save Schedule



The image shows a 'Save Schedule' dialog box. It features a dark blue background with white text. At the top center, the title 'Save Schedule' is displayed. Below the title is a text input field labeled 'Schedule Name' which contains the text '<No Name>'. At the bottom of the dialog, there are four buttons: 'Save', 'Save as New', 'Cancel', and 'Close'.

Schedule Name

Enter the name of the schedule here. (Up to 32 characters)

Save

Save the Schedule to the current schedule (the current schedule will be overwritten)

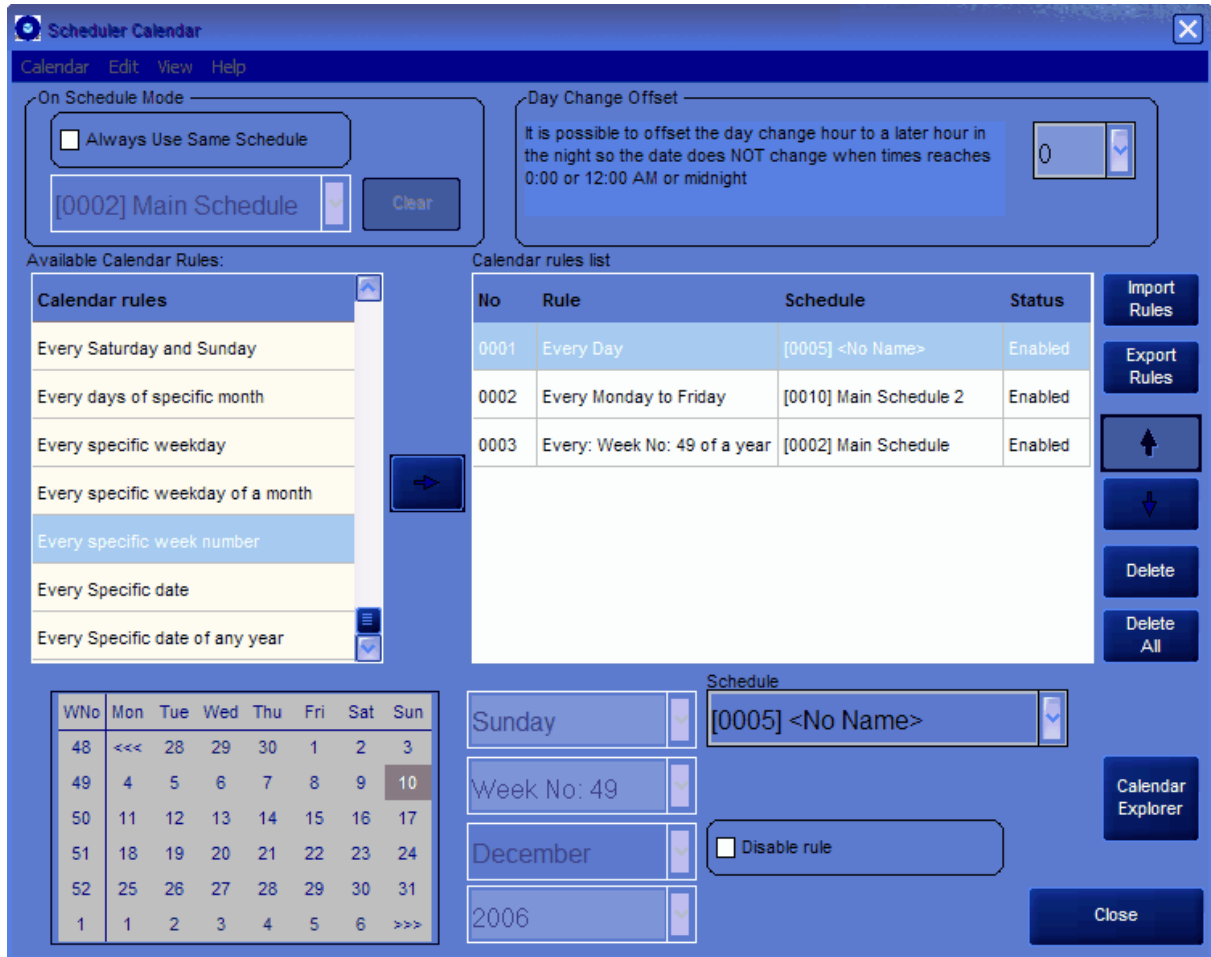
Save As New

The schedule will be saved as a new schedule

Preferences

Auto Close: The Save Dialog is automatically closed when the schedule is saved.

3.4 Scheduler Calendar Rules



This window allows you to create a set of rules that will dictate which schedule will be loaded for a particular day.

On the left side, you have all the rules available.
On the right side you have the rule list.



By dragging or double clicking or pressing the  button you can add a rule to the list.

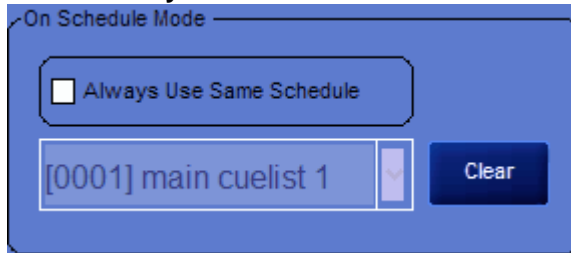
To assign a schedule to a rule, simply drag the schedule from the [List of schedules](#) to the schedule column.

The rules work as follow, the lowest priority is at the top of the list and the highest priority is at the bottom.

So the first rules could be "Everyday", this mean that everyday a specified schedule would be loaded. But if you wanted something different on a Wednesday you simply add the rule "Every specific weekday" and choose Wednesday on the drop list at the bottom.

So now you force the schedule to load a different Schedule on Wednesday then on the other days... You can pile as many rules as you want like this.

- **Always use Same Schedule**



When this is enabled, the calendar rules are ignore and the specified Schedule will always be used until the rules are enabled again.

Useful to bypass the calendar rules for special occasions



Move the selected item up one place

Holding the CTRL key at the same time will make the jump by 10



Move the selected item down one place

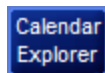
Holding the CTRL key at the same time will make the jump by 10



Deletes selected item(s)



Deletes all items



Opens the Calendar Explorer

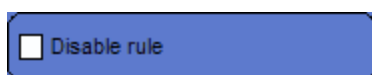


Export the current list of rules to a file.



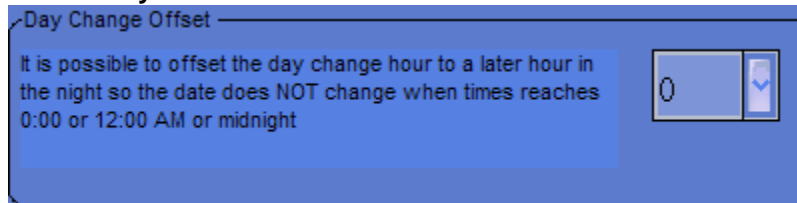
Import a list of rules

Note: the current rules will be replace with the new ones contained in the imported file.



Disabled rules will be ignore.

End Of Day Offset



Option in the Scheduler Calendar to offset the "End of the Day" time where new schedule are loaded. This is particular useful when show schedule start before midnight but ends after midnight.

Example: you have a special schedule for Saturday night where a show finish at 2:00 AM. the problem is that 2:00AM is now Sunday so you have to make a special schedule for Sunday as well.

By putting an offset of 3 Hours, the Sunday Schedule will only load at 3:00 AM leaving the possibility to have show stop on the Saturday Schedule.

3.5 Scheduler Calendar Explorer




This window shows the results of the calendar rules. If no schedule is set for a day, it will be shown in red.

This also displays the Sunset, Sunrise, hours of daylight and night for each day.

4 Action

4.1 List of Actions

Refresh Available Actions List			
Cue-List	Schedule	Internal	
Actions	Maxxyz	Active QL	
No. 	Action Name		
0001	QList:[0006] Main - [Go]		
0002	QList:[0007] M8 steps - [Go]		
0003	QList:[0007] M8 steps -		
0004	QList:[0007] M8 steps -		
0005	QList:[0007] M8 steps - [Rel]		
0006	QList:[0007] M8 steps - [Pause]		
0007	Cmd:[0004] Start Scheduler (N...		

This list contains all the Actions Group created.

A double click on an Action will open it in the [Action Editor](#)

Actions can be Dragged and Dropped directly onto a Schedule Event

Pressing will also add to schedule

Delete



Deletes the selected Actions

Edit

Opens the action in the Action Editor

New Action

Opens the Action Editor ready for a new Action

Call Action

This will call the selected Action

Clicking on the column header will sort the list by that column.

4.2 Save Action

A screenshot of a "Save Action Group" dialog box. The dialog has a dark blue background. At the top, it says "Save Action Group" in white. Below that, there are two input fields: "Action #" with the value "0" and "Action Name" with the value "No Name". Below the input fields is a checkbox labeled "Add to Schedule as new Event". At the bottom, there are three buttons: "Save", "Save As New", and "Cancel".**Action#**

This number is used for internal tracking of the action. It can be changed by the user

Action Name

Enter the name of the action here. (up to 32 characters)

Add to Schedule as new Event

If selected, the current action you are saving will be added to the schedule as a new event.

Save

Save the Action to the current action number

Save As New

The Action will be save as a new action

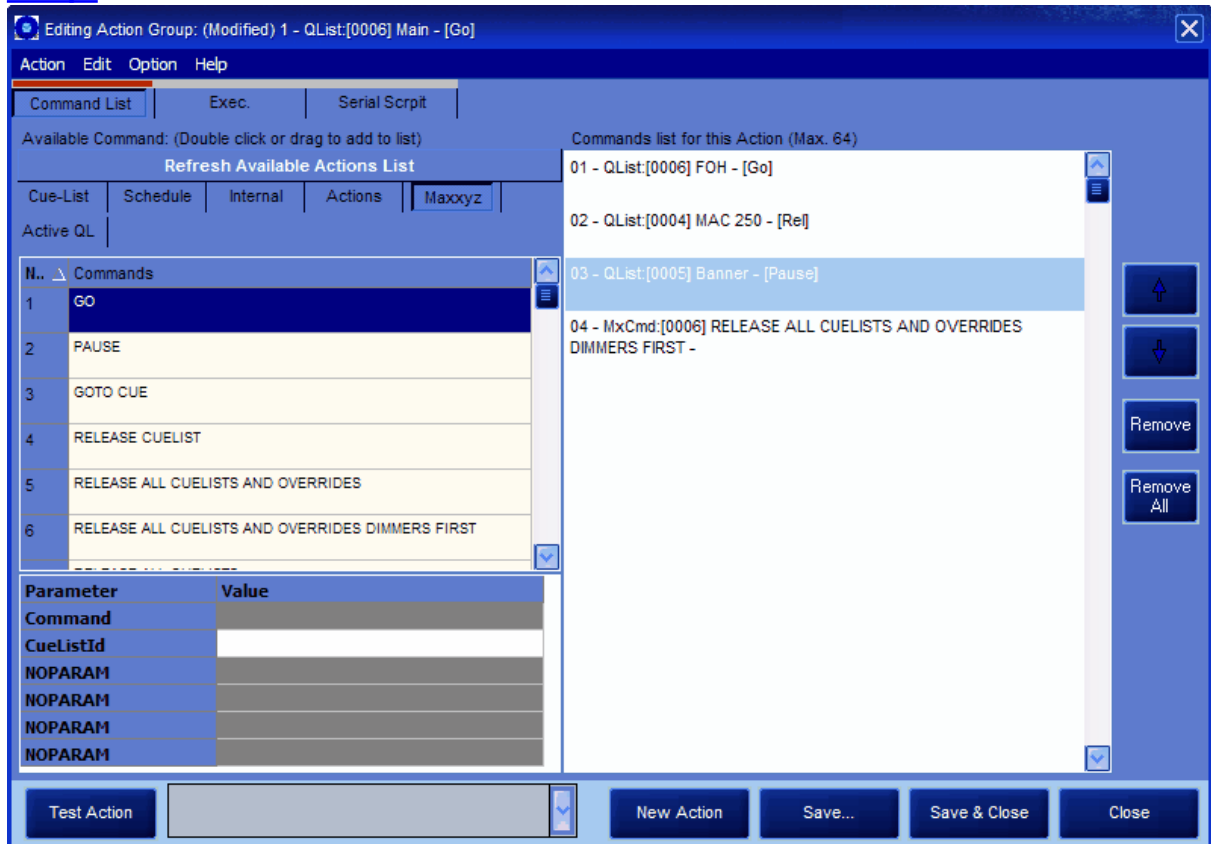
Preferences

- **Auto Close**

If enabled the control window will be closed after saving

4.3 Action Editor

Executable Script



The Action Editor contains a list of available commands on the left and a list of used commands on the right.

The far left is a list of pages for the different command types available


Maxxyz Cuelist and Functions

Also schedule and Internal Command

To add a command to the list double click the command or drag the command from the left list to the right list.




Click here to test the current action in the editor



Clear the editor and start a new Action



Open the [Save Action](#) control



If the Action as been previously saved, it will be simply re-saved and the editor will close
In it's not saved, the [Save Action](#) control will open



Move the selected item up one place



Move the selected item down one place



Remove selected item(s) in the commands list



Remove all items in the commands list

Menus

Action

New Action - Clear the editor and start a new Action

Load Action - Open the [Action List](#)

Save Action - Open the [Save Action](#) control

Test Action - Test the current action in the editor

Close - Close this control, if the action is not saved, you will be prompt

Edit

Remove all Commands - Delete all items in the commands list

Remove Selected Command(s) - Delete selected item(s) in the commands list

Clear Exec Command - Clear both fields in the Executable tab

Clear Script - Clear the selected script in the [Script](#) Tab

Delete Script - Delete Selected [Script](#)

New Script - Start a New [Script](#)

Save Script - Save Current [Script](#)

View

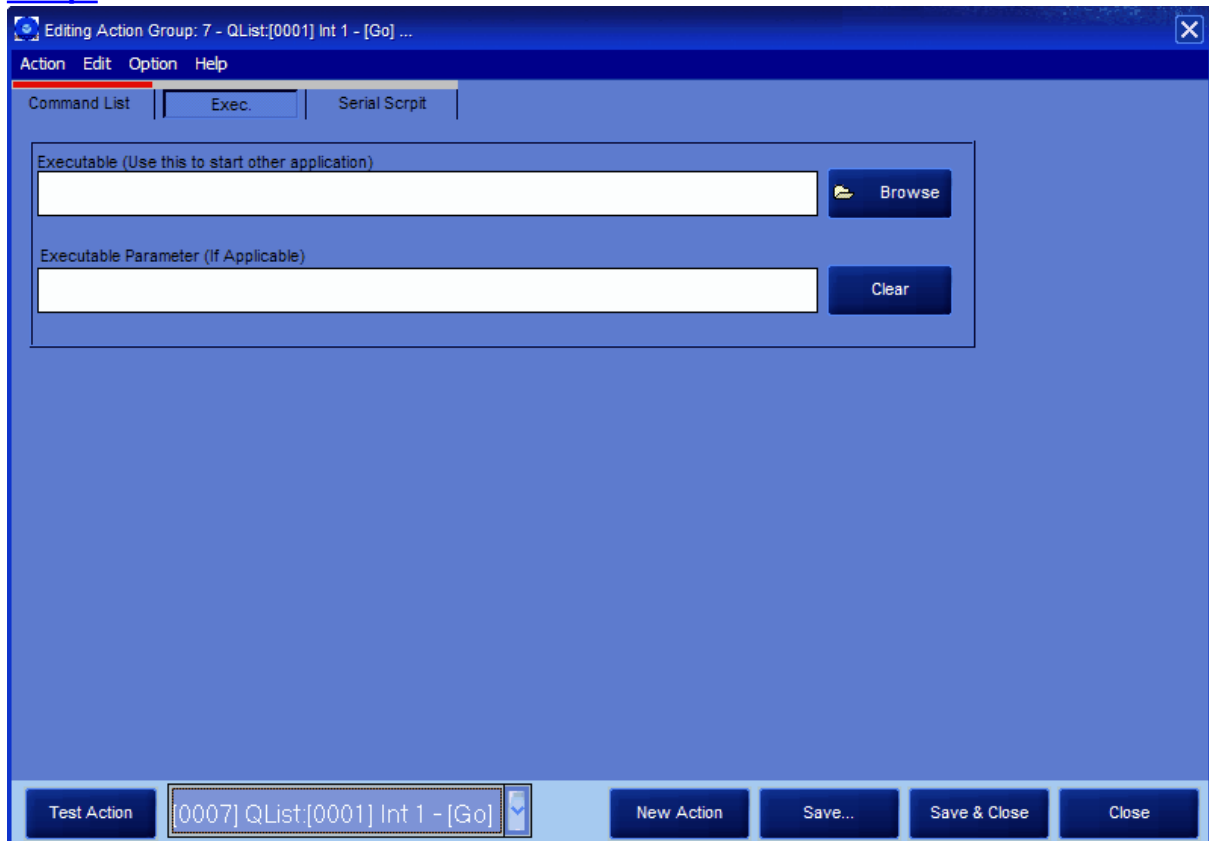
Show Action Items List - Open the [Action Items list](#), from there you can automatically create actions

Option

Auto Generate Title - When enable, the action title will change automatically according the first item on the list, If more than one items on the list, ellipsis is added at the end of the title...

4.4 Action Editor Executable

Action Script



An Action can start a executable, batch file, video, image or pretty much anything that can be open in Windows!

The first field is the one containing the object to open

The second field can be use to pass parameters to the command.

Browse

To browse for a file

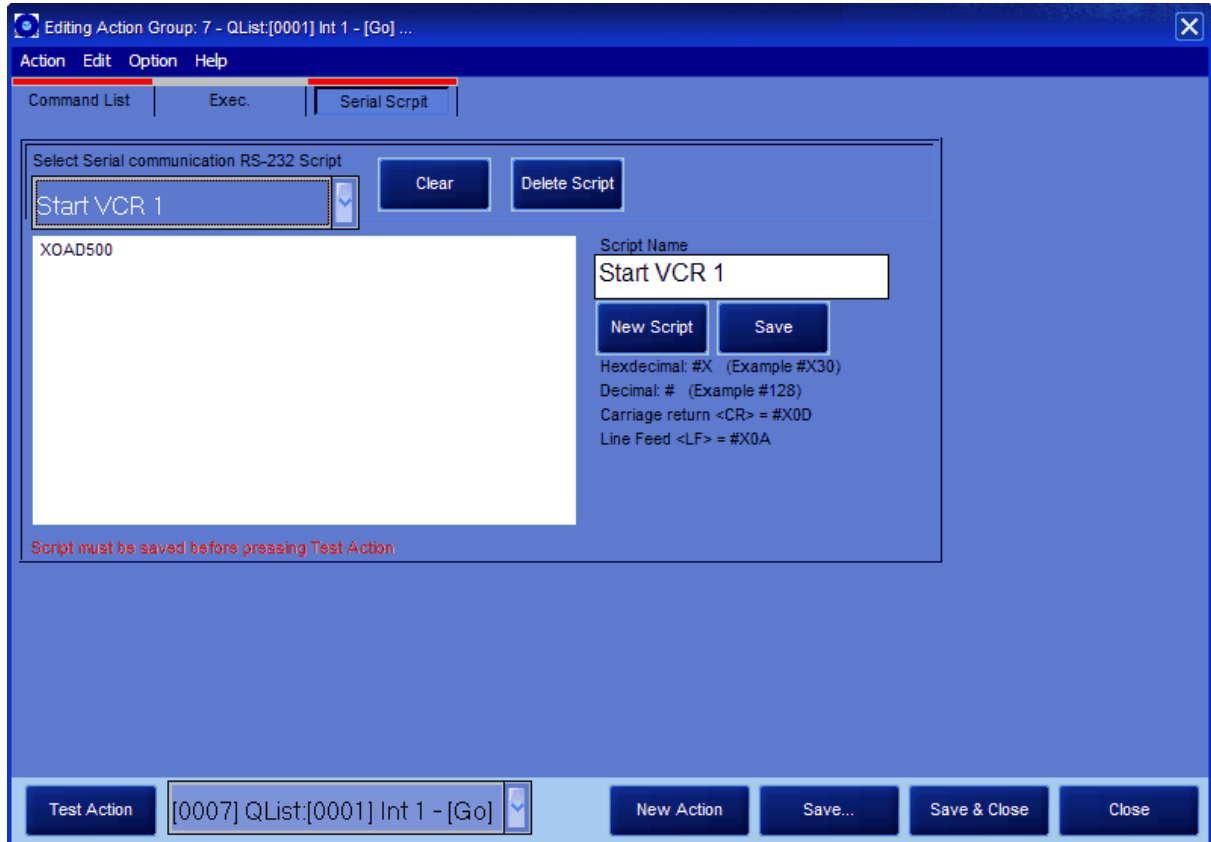
In the File of Type drop down you can choose between Executable, (*.exe), Batch file (*.bat) or all (*.*)

Clear

Clear both fields

4.5 Action Editor Script

Action Executable



Scripts are created and assigned from this page
A script is a simple text file that will be sent through the RS-232 port.

RS-232 Script

A String of any format can be sent, simply create or edit an Action and in the MISC tab. you will be able to create a script to be sent via RS232.

RS-232 command syntax

ASCII character strings

Characters sent from Maxxyz Manager are converted into individual ASCII character values before transmitting the RS-232 command. E.g. the command-string "Command123" sent from Maxxyz is translated into the following binary values: [67][111][109][109][97][110][100][49][50][51], and the command-string "123" is translated into [49][50][51]

Decimal values

Use # to indicate that the values following is to be considered a decimal value.
E.g. the command string "#123#1#2#3" is translated into [123][1][2][3], and "Test#1#2#3" is translated into [84][101][115][116][1][2][3]. Valid decimal values are in the range of 0 to 255.

Hexadecimal values

Use #X to indicate that a hexadecimal value is following.

E.g the command string "#X00#X01#XFF" is translated into [0][1][255], and "Test#X01#XFF" is translated into [84][101][115][116][1][255]. Valid hexadecimal decimal values are in the range of 00 to FF and hexadecimal values must always be written as two characters (#X1 is not valid #X01 is).

Special Characters

Since # is used to indicate that the value following is a decimal or hexadecimal value the only way to send the ASCII value of # (decimal 35) is to send it as a decimal or hexadecimal value (35 or 0x23). E.g. to send the string "#TEST" to a RS-232 device use the following command: "#35TEST" or to send the string "!TEST" to a RS-232 device use the following command: "#33TEST"

4.6 Action Items List

Refresh Available Actions List	
Cue-List	Schedule
Internal	
Actions	Maxxyz
Active QL	
Commands	
---	Schedule Commands
1	Start Scheduler
4	Start Scheduler (No Tracking)
5	Start Scheduler (No StartUp)
2	Stop Scheduler
3	Use Calendar Rules
---	General Commands
20	Restore all windows
21	Restore MAXXYZ Scheduler Launche
22	Hide all windows
23	Close all windows
25	Save log
---	Window Controls
Add to Scedule	
Call	

This window shows all the items available as action in the Maxxyz Manager
Cue Lists Functions, Schedule, Internal Commands, Action Groups.

From this window you can drag and drop items directly onto the Scheduler

If an Action Group already exists at the drop location, the item will be replaced with the new dropped item

but if the CTRL key is held down while drag and drop operation, the item will be added to the action group command list.

If no action exists at the drop location and the CTRL key is held down, a new action will be created automatically and the name of the action will be the same as the items plus a suffix describing the items type

Certain item type have optional parameters such as Start, Stop, Toggle, Open, Close...
Select the desired option before dragging to target.

5 How to...?

5.1 How to create a Schedule

Creating a schedule requires some planning and preparation.

All the different elements of the show must first be programmed into the Maxxyz.
Each step of the schedule must be well thought out - such as lamp strike, lamp off, reset of fixtures...etc.

Then, add all the actions needed to the Schedule.
Set the time for each event.

If you are using the Sunset and Sunrise feature (Astronomical clock), a [location setup](#) must be set first

Use the description field to add comments for future reference, this will help if someone else as to modified the schedule you made.

Save the schedule

If more than one schedule is needed, create all of them before doing the Calendar Rules.

Once finished, you must then create a set of rules in the [Calendar Rules editor](#) (See [How to create Calendar Rules](#))

5.2 How to create an Action Group

An [Action Group](#) is one or several commands sent to the Maxxyz or to the Maxxyz Manager itself.

If the schedule event or touch panel button only require one item (example: One cue) you don't have to create action Group

There are different ways of creating an action, let's start with the standard way

- Make sure Maxxyz is running

- From the Maxxyz Manager launcher go to the [VIEW](#) menu and click on [Action Editor](#)
- On the command list select the category you want, (Example Maxxyz CUELIST)
- Drag the Cue from the left column to the right column, you can also double-click to move the item from one column to the other.
- Up to 64 commands can be placed in the same action, but for now, lets keep it simple.
- Press the Save Button and the Save window will open
- As you can see there's already a name on the field, that's because the Maxxyz Manager automatically looks for what's in the action and determines a name.
- Press Save As New and you have created a new action.

Another way of creating actions is to use the [Show Action Items List](#) List.

- Make sure Maxxyz is running
- From the Maxxyz Manager launcher go to the [VIEW](#) menu and click on [Show Action Items List](#)
- A list of all the items from Maxxyz will be shown
- Choose a category (Example Function)
- Select one or multiple items in the list
- Right-Click and select "**Create New Action**"
- Maxxyz Manager will create the new actions, and each action will have the same name as the item you put in it..

Finally you can create an action simply by dragging an item from the [Show Action Items List](#) list onto an event in the [Scheduler](#) while holding down the CTRL key

5.3 How to create a Calendar Rules

[Calendar Rules](#) is a key feature of Maxxyz Manager.

It allows the use of several schedules for different days.

For Example:

The first rule could be "Everyday", this mean that everyday a specified schedule would be loaded. But if you want something different on a Wednesday you simply add the rule "Every specific weekday" and choose Wednesday on the drop down list at the bottom. Now you force the schedule to load a different Schedule on Wednesday then on the other days...

You can also specify a schedule for a specific day of the year, for example, December 25

You can pile as many rules as you want like this.

If there's only one schedule, you can simply set this schedule under **Always use Same Schedule**



To see the result of the rules press the Calendar Explorer button

5.4 How to Load/Save data

To backup and restore Maxxyz Manager Data,

The Default Folder where all the data is save is

C:\Documents and Settings\All Users\Application Data\Martin Professional\Maxxyz\MaxxyzManager

See the [Startup screen](#) for Loading a new show
See the [Main Menu](#) system for saving current show

5.5 How To Use the Web Server

Web Server

The Maxxyz Manager Web server works by using a webpage that contains commands used to call functions on Maxxyz Manager.

A list of [commands](#) is available in the help file.

The Webpage can be created using any HTML editor or Flash Animation program. Then this page must be placed in the folder '.\Documents and Settings\All Users\Application Data\Martin Professional\Maxxyz\MaxxyzManager\UserHTML'

To open the page on the local PC for testing, the Web server must be enabled and the file(s) placed in the above folder

For example: If a webpage is called Main.html and the web port used is 8080 the webpage can be opened in a web browser by entering the following as address `http://127.0.0.1:8080/main.html`

It is possible to only enter `http://127.0.0.1:8080` and have a specific webpage loaded. For that, simply enter the file name in the Default Webpage field.

If the default port is 80 then there is no need to enter the port number in the address.

Telnet Server

The Maxxyz Manager Telnet server can be used to remotely control the Maxxyz Manager using a command line base interface

A list of Telnet [commands](#) is available in the Help.

To open the Telnet on the local PC for testing, the Telnet server must be enabled and assigned to a TCP/IP port

For example: If the server port used is 2323 the Telnet can be opened entering the following as command in the Run menu of Windows
Telnet:127.0.0.1:2323

5.6 Advanced tips

Command at Startup

S: Opens the Scheduler window

R: Runs the Scheduler

The schedule loaded at startup is determined by the [Calendar rules](#)

M: Minimizes Maxxyz Manager

H: Hides the Maxxyz Manager Launcher

Here is an example of a command you can have in a batch file

```
"C:\Program Files\Martin Professional\Maxxyz\Maxxyz Manager\Maxxyzmanager.exe" R-S-M-H
```

Index

- A -

Action 30, 31, 32, 37
Astronomical Clock 9, 12

- B -

Background Cue 36
Backup 38
BAT 34
batchfile 34
BG Cue 36

- C -

Calendar 27, 29, 38
City 12
Clock 21
Country 12
Cue 36
Cue-list 36

- D -

Degree 12

- E -

East 12
Editor 32
EXE 34
Executable 34

- F -

Function 36

- H -

Hotkeys 9

- L -

Launcher 8
LightJockey 36, 38
Location 12

- M -

modify 32
month 27

- N -

Network 9
North 12

- P -

Position 12

- R -

Receive 13
Remote 9, 13
Restore 38
RS-232 9, 13, 35
Rules 27, 38
Run 21

- S -

Save 26, 31
Schedule 25, 26, 37
Scheduler 21, 25
Script 35
Send 13
Sequence 36
Server 9
Settings 9
Setup 9
South 12
Startup 39
StartUp Action 9
Status 8
Stop 21

- T -

Time 21

- W -

Web 9

week 27

weekend 27

West 12

Windows 9

- Y -

year 27

