

For product support, visit  
Para obtener asistencia técnica, visite  
Pour en savoir plus sur l'assistance sur les produits, visitez le site

[www.hd.philips.com](http://www.hd.philips.com)

HTL2151



|                    |    |                      |    |
|--------------------|----|----------------------|----|
| User manual        | 1  | Manuel d'utilisation | 29 |
| Manual del usuario | 15 |                      |    |

**EN: For further assistance, call the customer support service in your country.**

- To obtain assistance in the U.S.A., Canada, Puerto Rico, or the U.S. Virgin Islands, contact Philips Customer Care Center at 1-866-310-0744
- To obtain assistance in Mexico, contact Philips Customer Care Center at 01 800 839 1989

**ES: Para obtener mas informacion, llame al servicio de soporte al cliente de su pais.**

- Para obtener asistencia en los Estados Unidos, en Canada, Puerto Rico o en las Islas Virgenes de los Estados Unidos, comuniquese con Centro de atencion al cliente de Philips al 1-866-310-0744
- Solo para Mexico CENTRO DE ATENCION A CLIENTES LADA, 01 800 839 1989 Solo Para Mexico.

**FR: Pour obtenir de l'aide supplementaire, communiquez avec le centre de service a la clientele de votre pays.**

- Pour obtenir de l'aide aux États-Unis, au Canada, a Puerto Rico ou aux Iles Vierges americaines, communiquez avec le centre de service a la clientele Philips au : 1-866-310-0744
- Pour obtenir l'aide au Mexique, entrez en contact avec le centre de soin de client de Philips a 01 800 839 1989

For Product recycling information, please visit - [www.recycle.philips.com](http://www.recycle.philips.com)

Para obtener información del reciclaje de productos, por favor visite - [www.recycle.philips.com](http://www.recycle.philips.com)

Para obtener información de productos de reciclaje, por favor visite - [www.recycle.philips.com](http://www.recycle.philips.com)

P&F USA, Inc.

**PHILIPS**

# Contents

---

|                               |   |
|-------------------------------|---|
| <b>1 Important</b>            | 2 |
| Help and support              | 2 |
| Important safety instructions | 2 |
| Care for your product         | 4 |
| Care of the environment       | 4 |

---

|                        |   |
|------------------------|---|
| <b>2 Your SoundBar</b> | 4 |
| Assemble your Soundbar | 4 |
| Main unit              | 4 |
| Remote control         | 5 |
| Connectors             | 5 |

---

|   |   |
|---|---|
| <b>3 Connect</b>                        | 6 |
| Placement                               | 6 |
| Connect audio from TV and other devices | 7 |

---

|                            |   |
|----------------------------|---|
| <b>4 Use your SoundBar</b> | 8 |
| Adjust the volume          | 8 |
| Choose your sound          | 8 |
| MP3 player                 | 8 |
| USB storage devices        | 8 |
| Auto standby               | 9 |
| Apply factory settings     | 9 |

---

|                     |   |
|---------------------|---|
| <b>5 Wall mount</b> | 9 |
|---------------------|---|

---

|                                 |    |
|---------------------------------|----|
| <b>6 Product specifications</b> | 10 |
|---------------------------------|----|

---

|                          |    |
|--------------------------|----|
| <b>7 Troubleshooting</b> | 11 |
|--------------------------|----|

---

|                      |    |
|----------------------|----|
| <b>8 Notice</b>      | 11 |
| Notice of compliance | 11 |
| Trademarks           | 12 |

# 1 Important

Read and understand all instructions before you use your product. If damage is caused by failure to follow instructions, the warranty does not apply.

---

## Help and support

Philips provides extensive online support. Visit our website at [www.philips.com/support](http://www.philips.com/support) to:

- download the user manual and the quick start guide
- watch video tutorials (available only for selected models)
- find answers to frequently answered questions (FAQs)
- email us a question
- chat with our support representative.

Follow the instructions on the website to select your language, and then enter your product model number.

Alternatively, you can contact Philips Consumer Care in your country. Before you contact Philips, note down the model number and serial number of your product. You can find this information on the back or bottom of your product.

---

## Important safety instructions

- Read these instructions.
- Keep these instructions.
- Heed all warnings.
- Follow all instructions.
- Do not use this apparatus near water.
- Clean only with dry cloth.
- Do not block any ventilation openings. Install in accordance with the manufacturer's instructions.

- **Do not install near any heat sources** such as radiators, heat registers, stoves, or other apparatus (including amplifiers) that produce heat.



- **Do not defeat the safety purpose** of the polarized or grounding-type plug. A polarized plug has two blades with one wider than the other. A grounding type plug has two blades and a third grounding prong. The wide blade or the third prong are provided for your safety. If the provided plug does not fit into your outlet, consult an electrician for replacement of the obsolete outlet.
- **Protect the power cord** from being walked on or pinched, particularly at plugs, convenience receptacles, and the point where they exit from the apparatus.
- **Only use attachments/accessories** specified by the manufacturer.



- **Use only with the cart**, stand, tripod, bracket or table specified by the manufacturer or sold with the apparatus. When a cart is used, use caution when moving the cart/apparatus combination to avoid injury from tip-over.
- **Unplug this apparatus** during lightning storm or when unused for long periods of time.
- **Refer all servicing** to qualified service personnel. Servicing is required when the apparatus has been damaged in any way, such as power-supply cord or plug is damaged, liquid has been spilled or objects have fallen into the apparatus, the apparatus has been exposed to rain or moisture, does not operate normally, or has been dropped.

- **Battery usage CAUTION** - To prevent battery leakage which may result in bodily injury, property damage, or damage to the unit:
  - Install **all** batteries correctly, + and - as marked on the unit.
  - Do not mix batteries (**old and new** or **carbon and alkaline**, etc.).
  - Remove batteries when the unit is not used for a long time.
  - The batteries shall not be exposed to excessive heat such as sunshine, fire or the like.
  - Perchlorate Material - special handling may apply. See [www.dtsc.ca.gov/hazardouswaste/perchlorate](http://www.dtsc.ca.gov/hazardouswaste/perchlorate).
- The product/remote control may contain a coin/button type battery, which can be swallowed. Keep the battery out of reach of children at all times! If swallowed, the battery can cause serious injury or death. Severe internal burns can occur within two hours of ingestion.
- If you suspect that a battery has been swallowed or placed inside any part of the body, seek immediate medical attention.
- When you change the batteries, always keep all new and used batteries out of reach of children. Ensure that the battery compartment is completely secure after you replace the battery.
- If the battery compartment cannot be completely secured, discontinue use of the product. Keep out of reach of children and contact the manufacturer.
- **Apparatus shall not be exposed to dripping or splashing.**
- **Do not place any sources of danger on the apparatus** (for example, liquid filled objects, lighted candles).
- This apparatus may contain lead and mercury. Dispose according to local, State or Federal laws. For disposal or recycling information, please contact your local authorities. For additional assistance on recycling options, please contact [www.mygreenelectronics.com](http://www.mygreenelectronics.com) or [www.eiae.org](http://www.eiae.org) or [www.recycle.philips.com](http://www.recycle.philips.com).

- Where the MAINS plug or an appliance coupler is used as the disconnect device, the disconnect device shall remain readily operable.
- Do not place this apparatus on the furniture that is capable of being tilted by a child and an adult leaning, pulling, standing or climbing on it. A falling apparatus can cause serious injury or even death.
- This apparatus should not be placed in a built-in installation such as a bookcase or rack unless proper ventilation is provided. Make sure to leave a space of 7.8 inches (20cm) or more around this apparatus.

### Class II equipment symbol



This symbol indicates that the unit has a double insulation system.



This 'bolt of lightning' indicates uninsulated material within your unit may cause an electrical shock. For the safety of everyone in your household, please do not remove product covering.



The 'exclamation point' calls attention to features for which you should read the enclosed literature closely to prevent operating and maintenance problems.

**WARNING:** To reduce the risk of fire or electric shock, this apparatus should not be exposed to rain or moisture and objects filled with liquids, such as vases, should not be placed on this apparatus.

**CAUTION:** To prevent electric shock, match wide blade of plug to wide slot, fully insert.

---

## Care for your product

Use only microfiber cloth to clean the product.

---

## Care of the environment



Your product is designed and manufactured with high quality materials and components, which can be recycled and reused. Please visit [www.recycle.philips.com](http://www.recycle.philips.com) for additional information on a recycling center in your area.

Never dispose of your product with other household waste. Please inform yourself about the local rules on the separate collection of electrical and electronic products and batteries. The correct disposal of these products helps prevent potentially negative consequences on the environment and human health.

The batteries supplied do not contain the heavy metals mercury and cadmium. Nevertheless, in many areas batteries may not be disposed of with your household waste. Please ensure you dispose of batteries according to local regulations.

For perchlorate material, special handling may apply. Visit [www.dtsc.ca.gov/hazardouswaste/perchlorate](http://www.dtsc.ca.gov/hazardouswaste/perchlorate).

# 2 Your SoundBar

Congratulations on your purchase, and welcome to Philips! To fully benefit from the support that Philips offers, register your SoundBar at [www.philips.com/welcome](http://www.philips.com/welcome).

---

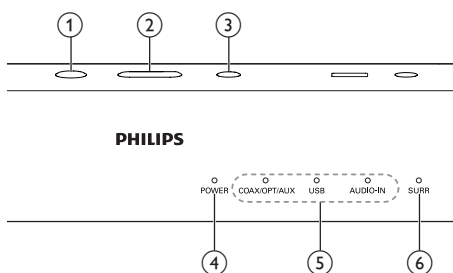
## Assemble your SoundBar

Assemble your SoundBar as described in the quick start guide (Step 1).

---

## Main unit

This section includes an overview of the main unit.

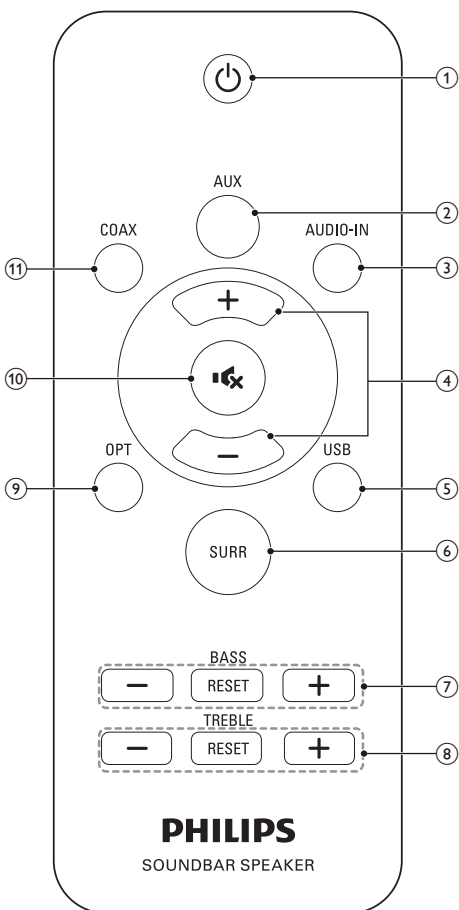


- ① Switch SoundBar on to last Source Mode or Standby Off Mode.
- ② **VOLUME +/-**  
Increase or decrease volume.
- ③ **SOURCE**  
Select an audio source for the SoundBar.
- ④ **Power**  
Lights up when you connect the SoundBar to electric mains.

- ⑤ **Source indicators**
- **COAX/OPT/AUX:** Lights up when you switch to coaxial, optical or analog audio input source.
  - **USB:** Lights up when you switch to the USB source.
  - **AUDIO-IN:** Lights up when you switch to the audio input source.
- ⑥ **SURR**  
Lights up when you select Virtual Surround sound.

## Remote control

This section includes an overview of the remote control.

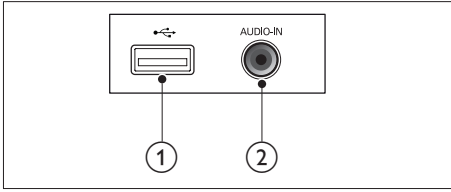


- ① **⏻ (Standby-On)**  
Switch the SoundBar On or to standby Off.
- ② **AUX**  
Switch your audio source to the AUX connection.
- ③ **AUDIO-IN**  
Switch your audio source to audio input connection (3.5mm jack).
- ④ **+/-**  
Increase or decrease volume.
- ⑤ **USB**  
Switch your audio source to the USB connection.
- ⑥ **SURR**  
Toggle between stereo and virtual surround sound.
- ⑦ **BASS +/- / RESET**
- Increase or decrease bass.
  - Reset your bass level to default setting mode.
- ⑧ **TREBLE +/- / RESET**
- Increase or decrease treble.
  - Reset your treble level to the default settings programmed at the factory.
- ⑨ **OPT**  
Switch your audio source to Optical Mode.
- ⑩ **🔇**  
Mute or restore volume.
- ⑪ **COAX**  
Switch your audio source to Coaxial Mode.

## Connectors

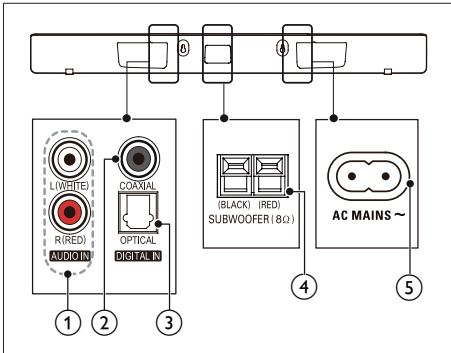
This section includes an overview of the connectors available on your SoundBar.

## Top connectors



- ① **USB**  
Audio input from a USB storage device.
- ② **AUDIO-IN**  
Audio input from an MP3 player (3.5mm jack).

## Rear connectors



- ① **AUDIO IN**  
Connect to an analog audio output on the TV or an analog device.
- ② **DIGITAL IN-COAXIAL**  
Connect to a coaxial audio output on the TV or a digital device.
- ③ **DIGITAL IN-OPTICAL**  
Connect to an optical audio output on the TV or a digital device.
- ④ **SUBWOOFER**  
Connect to the supplied subwoofer.
- ⑤ **AC MAINS~**  
Connect to the power supply.

# 3 Connect

This section helps you connect your SoundBar to a TV and other devices. For information about the basic connections of your SoundBar and accessories, see the quick start guide.

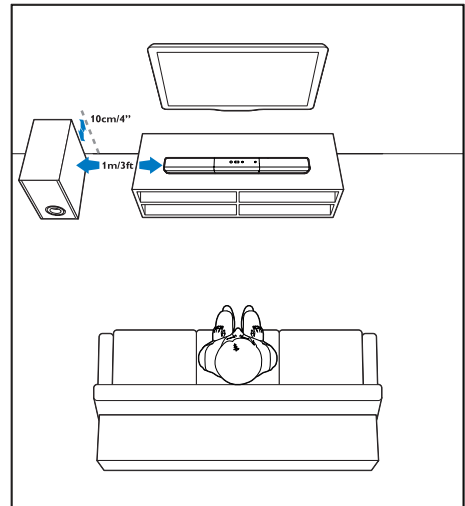
## Note

- For identification and supply ratings, refer to the type plate at the back or bottom of the product.
- Before you make or change any connections, make sure that all devices are disconnected from the power outlet.

## Placement

Place the subwoofer at least 1 meter (3 feet) away from your SoundBar, and ten centimeters away from the wall.

For best results, place your subwoofer as shown below.



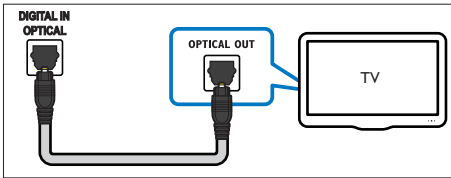
## Connect audio from TV and other devices

Play audio from TV or other devices through your Soundbar.

Use the best quality connection available on your TV and other devices.

### Option 1: Connect audio through a digital optical cable

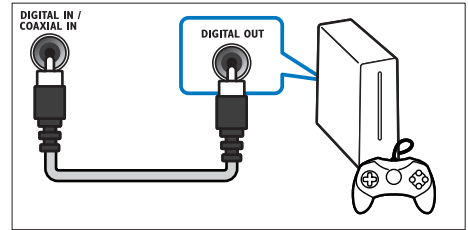
Best quality audio



- 1 Using an optical cable, connect the **OPTICAL** connector on your SoundBar to the **OPTICAL OUT** connector on the TV or other device.
  - The digital optical connector might be labeled **SPDIF** or **SPDIF OUT**.

### Option 2: Connect audio through a digital coaxial cable

Good quality audio

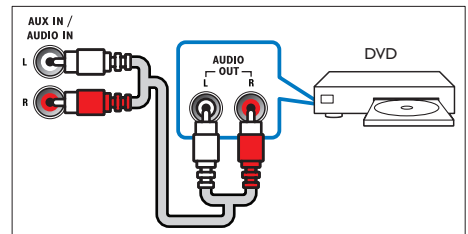


- 1 Using a coaxial cable, connect the **COAXIAL** connector on your SoundBar to the **COAXIAL/DIGITAL OUT** connector on the TV or other device.
  - The digital coaxial connector might be labeled **DIGITAL AUDIO OUT**.

### Option 3: Connect audio through analog audio cables

Basic quality audio

- 1 Using an analog cable, connect the **AUX** connectors on your SoundBar to the **AUDIO OUT** connectors on the TV or other device.





## 4 Use your SoundBar

This section helps you use the SoundBar to play audio from connected devices.

### Before you start

- Make the necessary connections described in the Quick Start Guide or download the User Manual from [www.philips.com/support](http://www.philips.com/support).
- Switch the SoundBar to the correct source for other devices.

---

### Adjust the volume

- 1 Press **+/-** to increase or decrease a volume level.
  - To mute sound, press **MUTE**.
  - To restore the sound, press **MUTE** again or press **+/-**.

↳ All **Source indicators** on the main unit blink twice when a volume is set to the maximum or minimum value.

---

### Choose your sound

This section helps you choose the ideal sound for your video or music.

---

#### Surround sound mode

Experience an immersive audio experience with surround sound modes.

- 1 Press **SURR** to select a surround mode.
  - **[Virtual Surround]**: Creates a highly surround listening experience. The **SURR** indicator on the main unit lights up.
  - **[Stereo]**: Two-channel stereo sound. Ideal for listening to music.

---

### Equalizer

Change the high frequency (treble) and low frequency (bass) settings of the SoundBar.

- 1 Press **TREBLE +/-** or **BASS +/-** to change the frequency.
  - Press **RESET** to reset your treble/bass level to the default setting mode.

↳ All **Source indicators** on the main unit blink twice when treble or bass is set to the maximum or minimum value.

---

### MP3 player

Connect your MP3 player to play your audio files or music.

#### What you need

- An MP3 player.
  - A 3.5mm stereo audio cable.
- 1 Using the 3.5mm stereo audio cable, connect the MP3 player to the **AUDIO-IN** connector on your SoundBar.
  - 2 Press **AUDIO-IN**.
  - 3 Press the buttons on the MP3 player to select and play audio files or music.

---

### USB storage devices

Enjoy audio on a USB storage device, such as an MP3 player and USB flash memory, etc.

#### What you need

- A USB storage device that is formatted for FAT file systems, and complies with the Mass Storage Class.
  - An MP3 or WMA file on a USB storage device
- 1 Connect a USB storage device to the SoundBar.
  - 2 Press **USB** on the remote control.

↳ The play starts after a few seconds.

## Note

- This product may not be compatible with certain types of USB storage device.
- If you use a USB extension cable, USB HUB, or USB multi-reader, the USB storage device may not be recognized.
- Digital camera PTP protocols are not supported.
- Do not remove the USB storage device while it is being read.
- DRM-protected music files (MP3, WMA) are not supported.
- Support a USB port: 5V  $\overline{\text{---}}$ , 500mA.

## Auto standby

When playing media from a connected device, the SoundBar automatically switches to standby if:

- no button is pressed for 15 minutes, and
- no audio play from a connected device.

## Apply factory settings

You can reset your SoundBar to the default setting mode.

- 1 In mute mode, quickly press **AUX** twice.
  - ↳ The factory settings is restored.

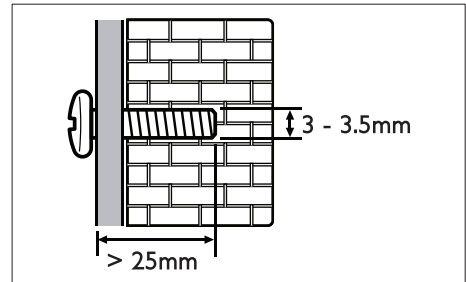
# 5 Wall mount

## Note

- Koninklijke Philips Electronics N.V. bears no responsibility for improper wall mounting that results in accident, injury or damage. If you have any query, contact Philips Consumer Care in your country.
- Before wall mounting, make sure the wall can support the weight of your SoundBar.

### Screw length/diameter

Depending on the type of wall mounting your SoundBar, make sure that you use screws of a suitable length and diameter.



For information about how to wall mount your SoundBar, see the quick start guide.

# 6 Product specifications



## Note

- Specifications and design are subject to change without notice.

---

## Audio

- S/PDIF Digital audio input:
  - Coaxial: IEC 60958-3
  - Optical: TOSLINK

---

## Main unit

- Power supply: 110-240 V~, 50 Hz - 60 Hz
- Power consumption: 30 W
- Standby power consumption:  $\leq 0.5$  W
- Speaker impedance:  
8 ohm (Tweeter), 4 ohm (Woofer)
- Frequency response: 160 Hz-20 kHz
- Dimensions (WxHxD):  
800 x 75.6 x 52.4 mm
- Weight: 3.84 kg

---

## USB

- Compatibility: Hi-Speed USB (2.0)
- Class support: USB Mass Storage Class (MSC)
- File system: FAT16 and FAT32
- Supports MP3 and WMA file formats
- Sampling frequency:
  - MP3: 8 kHz, 11 kHz, 12 kHz, 16 kHz, 22 kHz, 24 kHz, 32 kHz, 44.1 kHz, 48 kHz
  - WMA: 44.1 kHz, 48 kHz
- Constant bit rate:
  - MP3: 8 kbps-320 kbps
  - WMA: 32 kbps-192 kbps
- Version:
  - WMA: V7, V8, V9

---

## Amplifier

- FTC total output power: 34W
  - Left + Right : 16W (1%THD, 4ohm, 150Hz-20kHz)
  - Subwoofer: 15W (1%THD, 8ohm, 40Hz-150Hz)
- RMS total output power: 40W RMS (+/- 0.5 dB, 10% THD)
- Frequency response: 20 Hz-20 kHz /  $\pm 3$  dB
- Signal-to-noise ratio: > 65 dB (CCIR) / (A-weighted)
- Input sensitivity:
  - AUX: 2 V
  - AUDIO-IN: 1V

---

## Subwoofer

- Impedance: 8 ohm
- Speaker drivers: 130 mm (5.25") woofer
- Frequency response: 20 Hz-150 Hz
- Dimensions (WxHxD):  
165 x 240 x 295 mm
- Weight: 2.6 kg
- Cable length: 3 m

---

## Remote control batteries

- 1 x AAA-R03-1.5 V

## 7 Troubleshooting



### Warning

- Risk of electric shock. Never remove the casing of the product.

To keep the warranty valid, never try to repair the product yourself.  
If you have problems using this product, check the following points before you request service.  
If you still have a problem, get support at [www.philips.com/support](http://www.philips.com/support).

---

### Main unit

**The buttons on the SoundBar do not work.**

- Disconnect the SoundBar from the power supply for a few minutes, then reconnect.

---

### Sound

**No sound from SoundBar speakers.**

- Connect the audio cable from your SoundBar to your TV or other devices.
- Reset your SoundBar to its factory settings.
- On the remote control, select the correct audio input.
- Make sure that the SoundBar is not muted.

**Distorted sound or echo.**

- If you play audio from the TV through the SoundBar, make sure that the TV is muted.

## 8 Notice

This section contains the legal and trademark notices.

---

### Notice of compliance

This set complies with the FCC rules, Part 15. Operation is subject to the following two conditions:

- ① **This device may not cause harmful interference, and**
- ② **This device must accept any interference received, including interference that may cause undesired operation.**

### FCC rules

This equipment has been tested and found to comply with the limits for a Class B digital device, pursuant to part 15 of the FCC Rules. These limits are designed to provide reasonable protection against harmful interference in a residential installation. This equipment generates, uses and can radiate radio frequency energy and, if not installed and used in accordance with the instruction manual, may cause harmful interference to radio communications. However, there is no guarantee that interference will not occur in a particular installation. If this equipment does cause harmful interference to radio or television reception, which can be determined by turning the equipment off and on, the user is encouraged to try to correct the interference by one or more of the following measures:

- Relocate the receiving antenna.
- Increase the separation between equipment and receiver.
- Connect the equipment into an outlet on a circuit different from that to which the receiver is connected.
- Consult the dealer or an experienced radio/TV technician for help.

**FCC Radiation Exposure Statement:**This equipment complies with FCC radiation exposure limits set forth for an uncontrolled environment. This equipment should be installed and operated with a minimum distance of 20cm between the radiator and your body. This transmitter must not be co-located or operated in conjunction with any other antenna or transmitter.

**Warning:** Changes or modifications made to this equipment not expressly approved by Philips may void the FCC authorization to operate this equipment.

Model number: PHILIPS HTL2151

Trade Name: Philips

Responsible Party:P&F USA, Inc. PO Box 2248  
Alpharetta, GA 30023-2248; 1-866-310-0744

---

## Trademarks



Manufactured under license from Dolby Laboratories. Dolby and the double-D symbol are trademarks of Dolby Laboratories.

# ONE (1) YEAR LIMITED WARRANTY

## WARRANTY COVERAGE:

This warranty obligation is limited to the terms set forth below.

## WHO IS COVERED:

This product is warranted to the original purchaser or the person receiving the product as a gift against defects in materials and workmanship as based on the date of original purchase ("Warranty Period") from an Authorized Dealer. The original sales receipt showing the product name and the purchase date from an authorized retailer is considered such proof.

## WHAT IS COVERED:

This warranty covers new products if a defect in material or workmanship occurs and a valid claim is received within the Warranty Period. At its option, the company will either (1) repair the product at no charge, using new or refurbished replacement parts, or (2) exchange the product with a product that is new or which has been manufactured from new, or serviceable used parts and is at least functionally equivalent or most comparable to the original product in current inventory, or (3) refund the original purchase price of the product.

The company warrants replacement products or parts provided under this warranty against defects in materials and workmanship from the date of the replacement or repair for ninety (90) days or for the remaining portion of the original product's warranty, whichever provides longer coverage for you. When a product or part is exchanged, any replacement item becomes your property and the replaced item becomes the company property. When a refund is given, your product becomes the company property.

**Note: Any product sold and identified as refurbished or renewed carries a ninety (90) day limited warranty.**

**Replacement product can only be sent if all warranty requirements are met. Failure to follow all requirements can result in delay.**

## WHAT IS NOT COVERED - EXCLUSIONS AND LIMITATIONS:

This Limited Warranty applies only to the new products that can be identified by the trademark, trade name, or logo affixed to it. This Limited Warranty does not apply to any non-Philips hardware product or any software, even if packaged or sold with the product. Non-Philips manufacturers, suppliers, or publishers may provide a separate warranty for their own products packaged with the bundled product.

The company is not liable for any damage to or loss of any programs, data, or other information stored on any media contained within the product, or any non-Philips product or part not covered by this warranty. Recovery or reinstallation of programs, data or other information is not covered under this Limited Warranty.

This warranty does not apply (a) to damage caused by accident, abuse, misuse, neglect, misapplication, or non-Philips product, (b) to damage caused by service performed by anyone other than an Authorized Service Location, (c) to a product or a part that has been modified without written permission,

or (d) if any serial number has been removed or defaced, or (e) product, accessories or consumables sold "AS IS" without warranty of any kind by including refurbished Philips product sold "AS IS" by some retailers.

## This Limited Warranty does not cover:

- Shipping charges to return defective product.
- Labor charges for installation or setup of the product, adjustment of customer controls on the product, and installation or repair of antenna/signal source systems outside of the product.
- Product repair and/or part replacement because of improper installation or maintenance, connections to improper voltage supply, power line surge, lightning damage, retained images or screen markings resulting from viewing fixed stationary content for extended periods, product cosmetic appearance items due to normal wear and tear, unauthorized repair or other cause not within the control of the company.
- Damage or claims for products not being available for use, or for lost data or lost software.
- Damage from mishandled shipments or transit accidents when returning product.
- A product that requires modification or adaptation to enable it to operate in any country other than the country for which it was designed, manufactured, approved and/or authorized, or repair of products damaged by these modifications.
- A product used for commercial or institutional purposes (including but not limited to rental purposes).
- Product lost in shipment and no signature verification receipt can be provided.
- Failure to operate per Owner's Manual.

## TO OBTAIN ASSISTANCE IN THE U.S.A., CANADA, PUERTO RICO, OR U.S. VIRGIN ISLANDS...

Contact Customer Care Center at:

1-866-310-0744

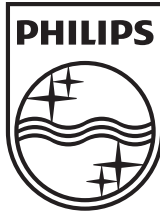
REPAIR OR REPLACEMENT AS PROVIDED UNDER THIS WARRANTY IS THE EXCLUSIVE REMEDY FOR THE CONSUMER. PHILIPS SHALL NOT BE LIABLE FOR ANY INCIDENTAL OR CONSEQUENTIAL DAMAGES FOR BREACH OF ANY EXPRESS OR IMPLIED WARRANTY ON THIS PRODUCT. EXCEPT TO THE EXTENT PROHIBITED BY APPLICABLE LAW, ANY IMPLIED WARRANTY OF MERCHANTABILITY OR FITNESS FOR A PARTICULAR PURPOSE ON THIS PRODUCT IS LIMITED IN DURATION TO THE DURATION OF THIS WARRANTY.

Some states do not allow the exclusions or limitation of incidental or consequential damages, or allow limitations on how long an implied warranty lasts, so the above limitations or exclusions may not apply to you.

*This warranty gives you specific legal rights. You may have other rights which vary from state/province to state/province.*

P&F USA Inc. PO Box 2248 Alpharetta, GA 30023-2248

P&F USA, Inc.  
PO Box 2248 Alpharetta, GA 30023-2248



|  |   |   |
|--|---|---|
| <b>Barra de Sonido</b>   |   | <b>HTL2151/F7</b>   |
| 120V~, 60Hz  |   | <b>30 W</b>   |
| <b>Consumo de Energía Eléctrica</b>                                      |   | <b>6.94 Wh</b>  |
| <b>Consumo de Energía Eléctrica del aparato en Modo de Espera</b>        |   | <b>0.412 Wh</b>   |
| <b>Comercializado por :</b>  | <b>P&amp;F MEXICANA. S.A. DE C.V.</b>   |   |
| <b>IMPORTADOR:</b>   | <b>P&amp;F MEXICANA. S.A. DE C.V.</b>   |   |
|  | Av. La Palma #6.<br>Col. San Fernando La Herradura<br>Huixquilucan, Edo. México.<br>MEXICO C.P.52787.<br>Tel: 52 (55) 5269 - 9000 |   |
| <b>EXPORTADOR:</b>   | <b>P&amp;F USA Inc.</b>   |   |
| <b>HECHO EN:</b>   | CHINA   |    |
| <b>GARANTIA INCLUIDA EN EL INSTRUCTIVO DE USO</b>                        |   |   |
| <b>LEA CUIDADOSAMENTE ESTE INSTRUCTIVO<br/>ANTES DE USAR SU APARATO.</b> |   |   |

Specifications are subject to change without notice  
© 2013 Koninklijke Philips Electronics N.V.  
All rights reserved.

HTL2151\_F7\_UM\_V1.0

