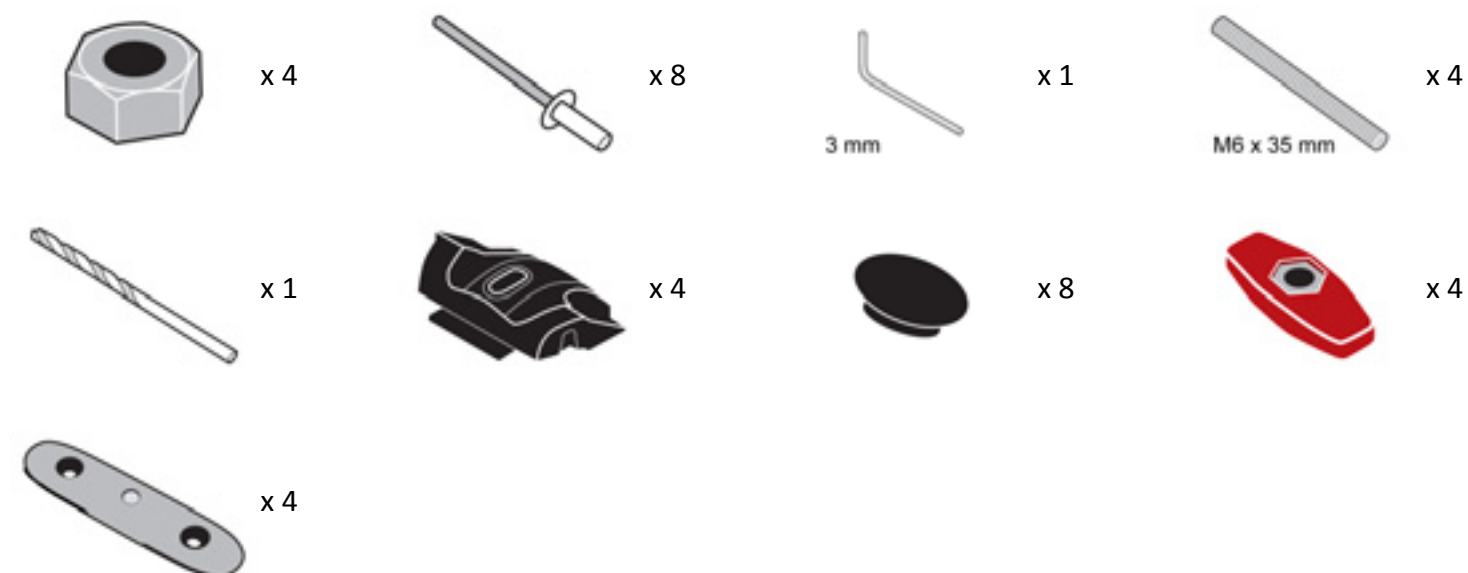
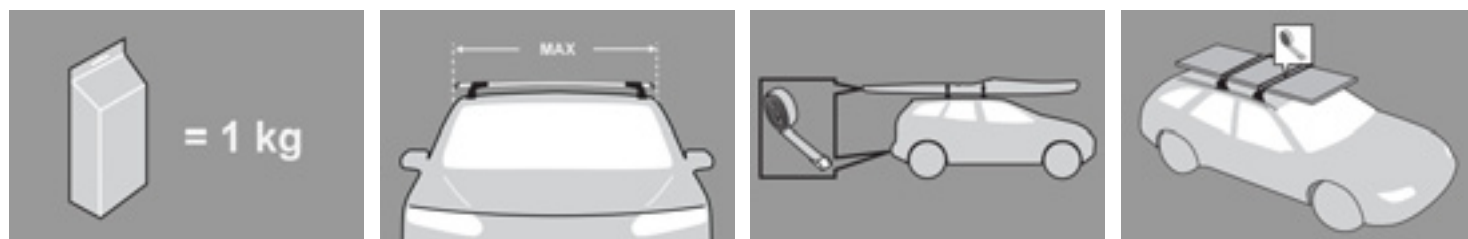


GB Fitting Instructions for Basic Carrier



First Time Installation



- Remove parts from packaging and check contents. Contact your Prorack dealer if parts are missing or damaged.



- This kit fits type A, B, C and D.
- These instructions show type A crossbar fitted. They also apply to type B, C and D.



- Use keys to remove covers.



- Use hex screwdriver to reverse adjusting screw 10 turns.



- Remove clamp block by pressing backwards.



- Fit rubber pad (supplied with crossbar) to foot.
- Make sure the pad fits into the holes underneath the foot.



- Carefully select desired position for crossbars on vehicle roof.
- Adjust crossbar in or out to suit vehicle. Refer to the crossbar instructions for crossbar adjustment.
- Apply masking tape to vehicle roof in all four positions.
- Make sure there is no interference between what you intend to carry with aerials, sunroof or tailgate.



- Place crossbar on vehicle. Minimum recommended spacing between the bars is 700mm (unless otherwise stated).
- Trace around rubber pad using a pencil or pen.
- Repeat for all four positions.



- Remove both pins from each leg (use spanner located inside left hand cover to assist).
- Repeat for all legs.



- While holding foot, detach crossbar from foot.



- Drill through the two holes in the foot while holding foot tight on roof in marked position.



- Remove masking tape and place silicon sealant around drilled holes on roof for all four positions.



- Fit rivets through plastic permanent mount blocks.



- While holding the permanent mount block firmly on roof, rivet the blocks to the roof.

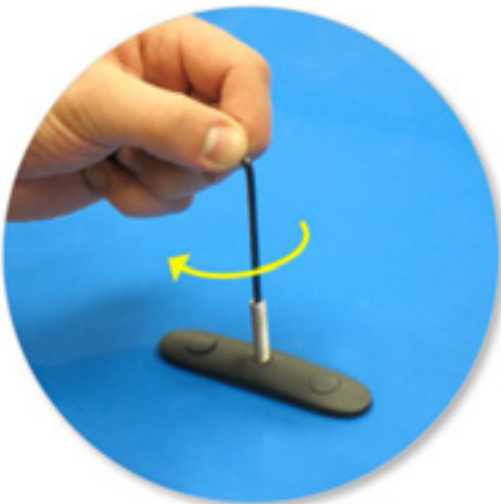


- Repeat for all four positions.



- Fit plastic plugs to permanent mount blocks over rivet heads. If they appear very loose, glue them in place.

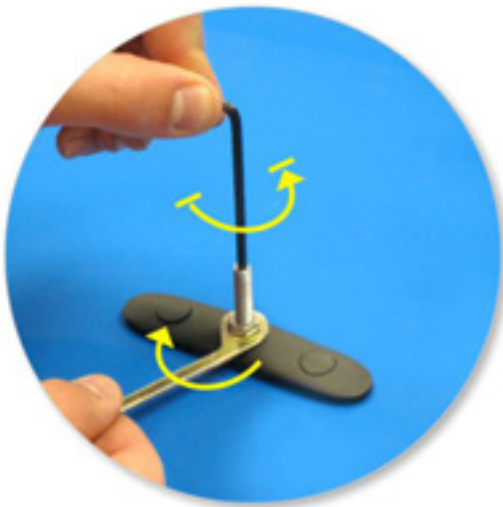
Fitment



- Select grub screws and screw into the vehicle's fixed points.
- Do not over tighten.
- Repeat for all four positions.



- Fit nut to grub screw.



- Using spanner supplied with crossbar and 3mm Allen key, back grub screw off half a turn and lock nut down.



- Assemble foot and pad to crossbar legs by re-inserting pins.



- Select plastic internal block (from fitting kit) and insert into foot.
- Repeat for all legs.



- Place crossbar foot over grub screws.



- Tighten the red plastic knob.



- Ensure the red plastic knob is in the position shown when fully tightened.



- Tighten adjusting screw to 5 Nm.



- Check crossbar is securely attached to the vehicle.
- Use keys to fit and lock covers

CAUTION: Regularly check screws are tight