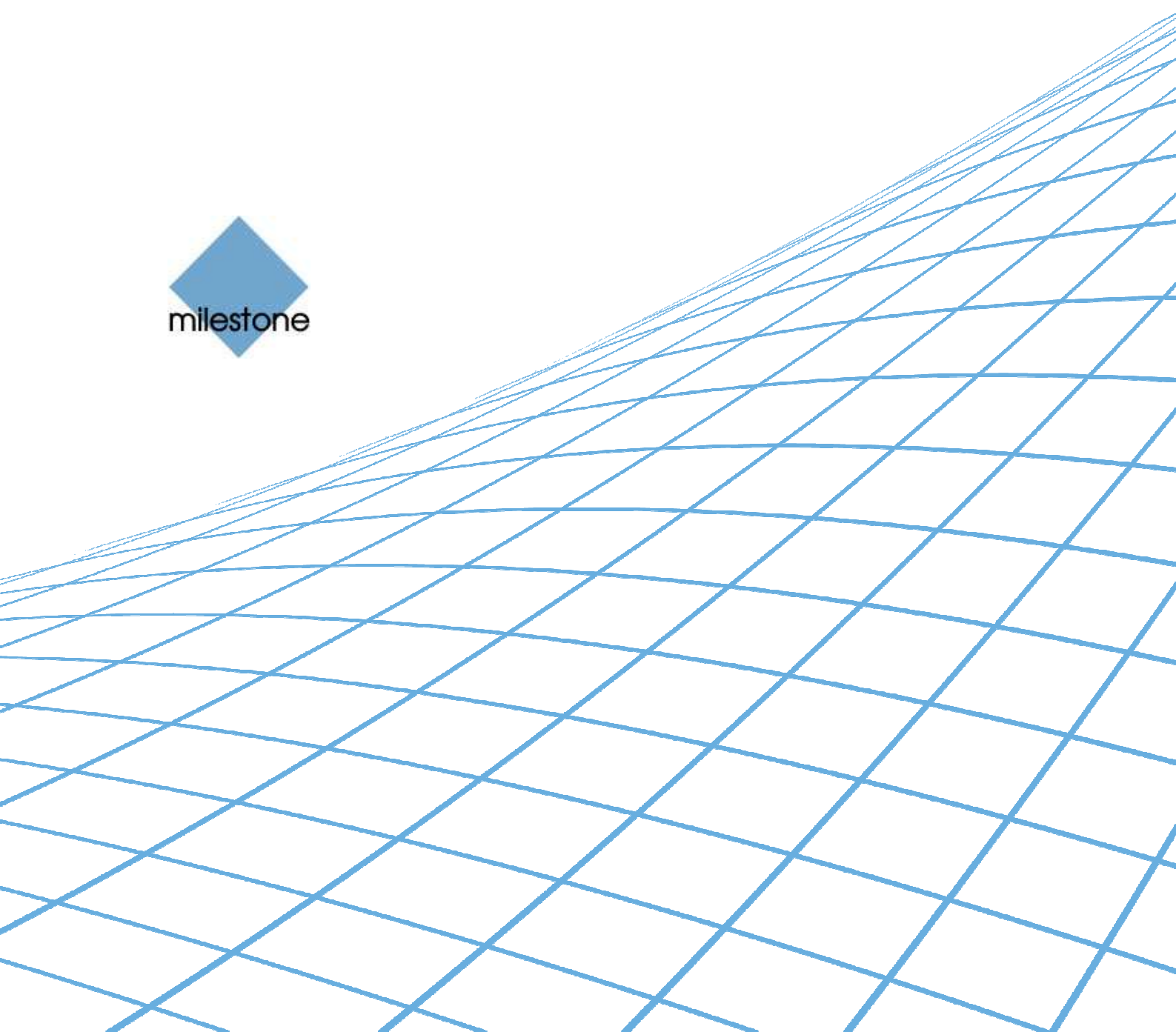




XProtect[®]

**American Dynamics
CC300 Keyboard
Smart Client Plug-in
User's Manual**





Target Audience for this Document

This document is aimed at system users and provides descriptions of how to install and maintain the plug-in for the American Dynamics CC300 keyboard in the Milestone XProtect Smart Client.



Contents

COPYRIGHT, TRADEMARKS & DISCLAIMERS	4
Copyright	4
Trademarks.....	4
Disclaimer	4
GENERAL DESCRIPTION.....	5
INSTALLATION	6
VIDEO SURVEILLANCE CONTROL BOARD INSTALLATION	7
CONFIGURATION & LICENSING	8
License File.....	8
Missing License File Error Messages	9
Configurable Actions.....	10
Example of Select Camera	10
Example of Select Monitor	11
Joystick Options	12
Serial Port Properties Setup	12
Profile Options	12
DEFAULT SETTINGS.....	14
INDEX	15



Copyright, Trademarks & Disclaimers

Copyright

© 2013 Milestone Systems A/S.

Trademarks

XProtect is a registered trademark of Milestone Systems A/S.

Microsoft and Windows are registered trademarks of Microsoft Corporation.

All other trademarks mentioned in this document are trademarks of their respective owners.

Disclaimer

This document is intended for general information purposes only, and due care has been taken in its preparation.

Any risk arising from the use of this information rests with the recipient, and nothing herein should be construed as constituting any kind of warranty.

Milestone Systems A/S reserve the right to make adjustments without prior notification.

All names of people and organizations used in this document's examples are fictitious. Any resemblance to any actual organization or person, living or dead, is purely coincidental and unintended.

This product may make use of third party software for which specific terms and conditions may apply. When that is the case, you can find more information in the file *3rd_party_software_terms_and_conditions.txt* located in your Milestone surveillance system installation folder.



General description

The AMERICAN DYNAMICS CC300 is a video control station that enables the user to view and control cameras and video recorders at local and remote facilities.

A full description of the ADCC300 is found in a separate document, [ADCC0200, ADCC0300 Keyboard Installation and Operation Instructions](#) (MP200-300HB-7.pdf).

The AMERICAN DYNAMICS CC300 SmartClient Plug-in enables using the AMERICAN DYNAMICS CC300 to perform a subset of Milestone XProtect Smart Client functionality instead of using the SmartClient User Interface.

There is no “one to one” mapping of AMERICAN DYNAMICS CC300 functions to SmartClient functions and vice versa. Some AMERICAN DYNAMICS CC300 functionality is not applicable for SmartClient, and SmartClient contains functionality not implemented by the AMERICAN DYNAMICS CC300.

The reader should have knowledge of the AMERICAN DYNAMICS CC300 operation. Reading the document that is mention above can give you this knowledge.



Installation

The Smart Client plugin for American Dynamics CC300 keyboard comes with an installer. To install the plugin, do the following:

1. Double-click on 'Milestone_ADCC300_Plugin_Installer_x64_en-US.msi'. This will start the installation wizard.



Figure 1: End User License Agreement

2. When the installation wizard starts, click *Next*, and complete the wizard.

During installation, the following files are installed:

- plugin.def
- VideoOS.RemoteClient.Plugin. ADCC300.dll (Plugin only)
- VideoOS.RemoteClient.Plugin. ADCC300.dll.config (Plugin only)
- VideoOS.Keyboards.KeyboardPluginBase.dll
- VideoOS.Keyboards. ADCC300Plugin.dll
- Docs\ MP200-300HB-7.pdf
- Docs\ MilestoneXProtectSmartClient_American_Dynamics_CC300_Controller_Plug-in_Users_Guide_en-US.pdf (this file)



Video Surveillance Control Board Installation

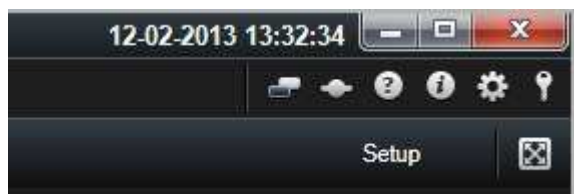
For installation at a PC that is served by a COM port or USB communications facility, use an RS-422 connection at the KBD keyboard and an RS-422 Converter to transfer to RS-232, then Serial to USB Converter connect to PC.



Configuration & Licensing

To show the configuration window of the plug-in, do the following:

1. Click the *Options* button in the top right corner of the Smart Client.



2. In the popup *Options* form, select *American Dynamics CC300 Setup*.

License File

The 'About' tab shows additional information related to the plug-in such as licensing info, version etc.

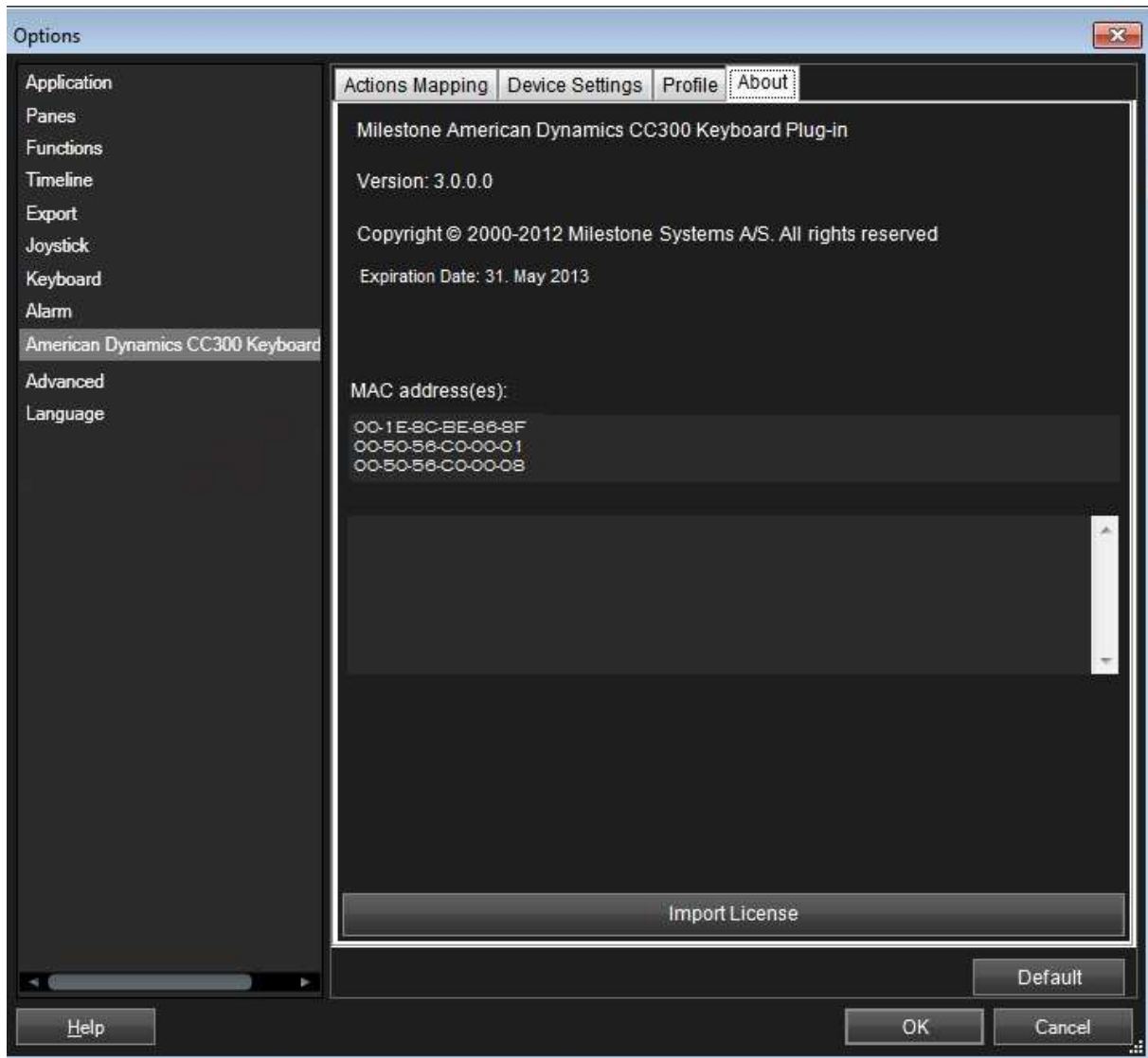
The license file can be imported by clicking the 'Import License' button located in the 'About' tab. After importing, the plug-in will verify the chosen license file and enable functionality immediately if the verification is successful.

Note: The user importing the license file must have appropriate user rights to the plug-in folder. Therefore it's advisable to launch the Smart Client using 'Run as administrator' when the license file is imported.

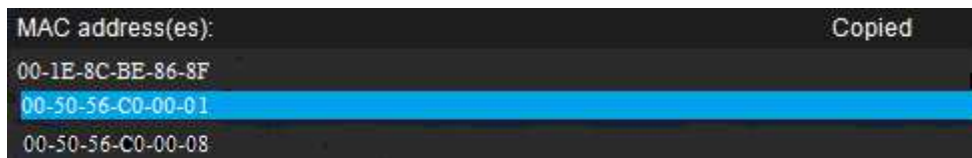
If so desired, the license file (*ADCC300Keyboard.lic*) can also be manually copied to one of the following default installation folders:

- **32 bit operating system:** C:\Program Files\Milestone\ XProtect Smart Client\MIPPlugins\VideoOS.Keyboards. ADCC300\
- **64 bit operating system and 32 bit Smart Client:** C:\Program Files (x86)\Milestone\XProtect Smart Client\MIPPlugins\VideoOS.Keyboards. ADCC300Plugin \
- **64 bit Smart Client:** C:\Program Files\Milestone\ XProtect Smart Client\MIPPlugins\VideoOS.Keyboards. ADCC300 Plugin \

A license file can be temporary or permanent, tied to a MAC address or to a SLC.



Note: MAC addresses are listed in the About dialog, accessed by right click on the system menu of ADCC300 Keyboard Setup dialog: To acquire a permanent license file, please submit a purchase order, containing the SLC of the XProtect Server and the MAC address of the computer where the keyboard is attached, through the Milestone Online Order System.



Missing License File Error Messages

Error messages will be displayed on the ADCC300 Keyboard Setup dialog only if license checking fails. Examples:

- If no license file was found:



Failed to load file. Exception message: Could not find file 'C:\Prog

- If license has expired:

The license has expired.

Configurable Actions

The American Dynamics CC300 SmartClient Plug-in contains a method for sending User-defined instructions to the SmartClient. Currently, the number of configurable actions is configurable but limited to 640.

The actions are defined using the setup module, described later in this document. They are activated by pressing a number and following ENTER key (configurable, e.g. can be changed to F1, F2...) on the American Dynamics CC300.

Example: pressing digits 1 and 2 on the numeric keypad followed by ' ENTER' (default), send the instruction that is defined as number 12 in the generic actions list to the SmartClient. If no instruction is defined for generic action 12, nothing happens.

In the Keyboard Setup dialog you define the instructions (actions) that are executed when you press a number (1 - 12) followed by the ENTER key. The Drop-Down button appears on the selected row. A click on this button displays a list of all available SmartClient instructions, where you can select one to assign to the current rows number. The list looks like this:



You can configure the number of configurable generic actions by changing the value of the *NumericUpDown*.

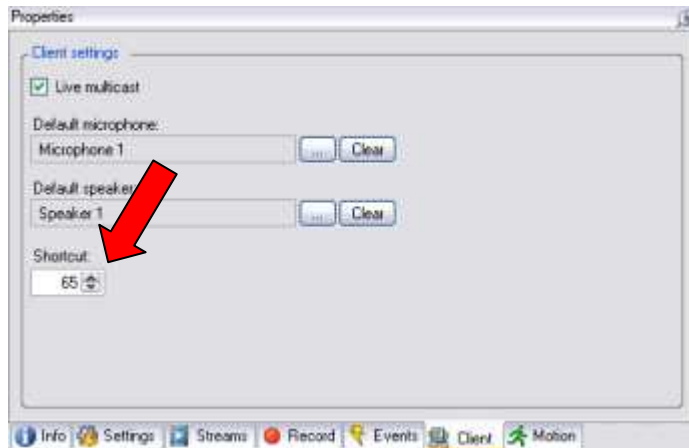
The highlighted number is the number of configurable actions displayed in the setup form. In the example above this number is 12.

Example of Select Camera

To configure "Select Camera" function,

- Make sure camera number (shortcut) is defined, which are used to identify each camera. This can be defined in the Management Client (XPCO)/Management Application(XPE), each camera's shortcut number is specified in the Shortcut field in the *Client* .

To access the *Client* tab, select the required camera in the *overview* pane, then select the *Client* tab in the properties pane.



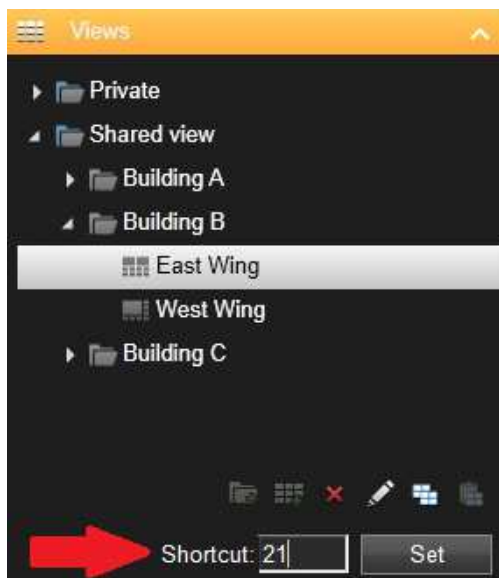
- Configure action from the setup module. This action is set to CAMERA by default.
- The function can be activated by pressing a number followed by pressing CAMERA on the device. E.g. press 65 and CAMERA will switch to camera with shortcut '65'.

Example of Select Monitor

To configure "Select Monitor" function,

- Make sure view number (shortcut) is defined, which are used to identify each view. This can be defined in the Smart Client on the *Setup* tab.

Specify the required shortcut number in the *Shortcut* field.



- Configure action from the setup module. This action is set to MONITOR by default.
- The function can be activated by pressing a number followed by pressing MONITOR on the device. E.g. press 21 and MONITOR will switch to view with shortcut '21'.



Joystick Options

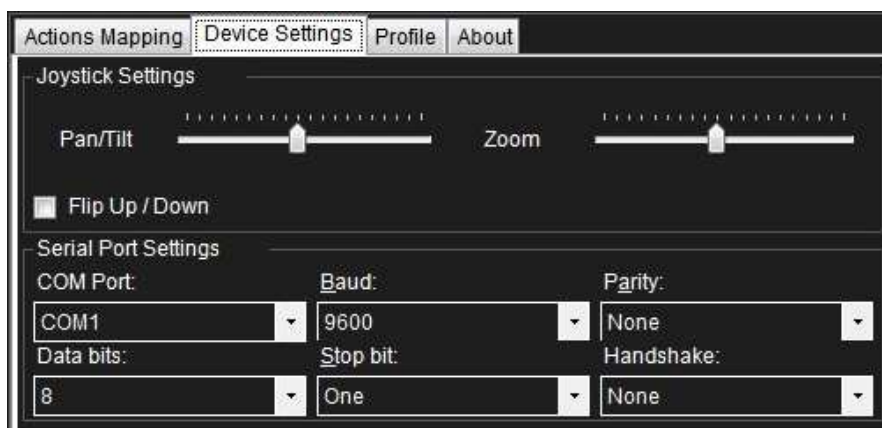
For joystick setup, please go to *Device Settings* tab.

The joystick tilt direction on the AMERICAN DYNAMICS CC300 is:

- Joystick forward -> Tilt up
- Joystick backwards -> Tilt down

This is the opposite of the default for a normal joystick.

The 'Flip Up / Down' switch enables the user to invert Tilt direction to match standard joystick.



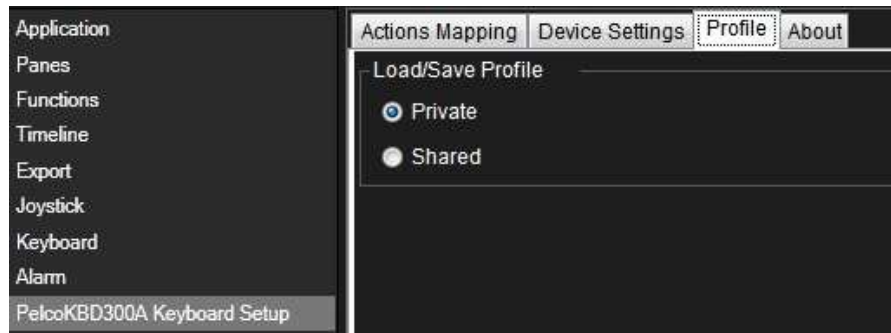
By adjusting Pan/Tilt and Zoom TrackBar, PTZ sensitivity can be changed as well.

Serial Port Properties Setup

- COM Port: Select the COM (Serial) port the AMERICAN DYNAMICS CC300 is connected to. The Drop-Down list displays a list of all COM port on the computer.
- Baud, Parity, Data Bits, Stop Bits, and Handshake: These must be the same values that are defined on the AMERICAN DYNAMICS CC300 by the system administrator.

Profile Options

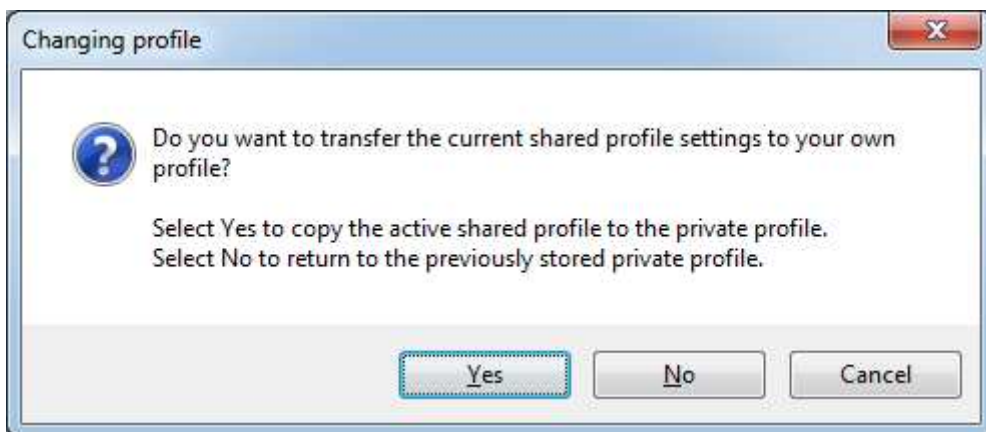
The current setting is stored privately on the server. But it can be transferred to the shared profile, meaning that the settings will be applied to everyone who intends to use this profile.



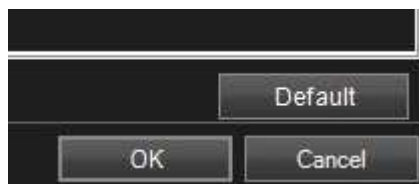
A message dialog will be displayed if profile changes. For example, changing profile from 'Private' to 'Shared'



Example from 'Shared' to 'Private'



Profile can also be imported from previous version by clicking the 'Import' button on right bottom of the Setup form. This button is only visible if the previous profile exists.



Profile can always be reset to default by clicking the 'Default' button.



Default Settings

Default settings can be activated by pressing the “Default settings” button from the Setup Form.

The default setting including:

- COM Port: “COM1”.
- Baud: 9600, Parity: None, Data bits: 8, Stop Bits: 1, and Handshake: None
- Generic numbers:
 - all not assigned
- AMERICAN DYNAMICS CC300 spec:
 - ENTER - Select Generic number.
 - Joystick - default joystick move motions such as pan left/right/stop, tile up/down/stop, and zoom in/out
 - F1 – Show live
 - 1 + F1 – Show browse
 - 2 + F1 – Show setup
 - NEAR/FAR - Focus up/down/stop
 - OPEN/CLOSE – Iris up/down/stop
 - AUX1/2/3/4 – Ptz AUX1/2/3/4
 - PRESET – Go to preset position
 - STOP – Playback stop
 - RECORD – Start recording on selected camera(Only XPE)
 - PAUSE – Playback stop
 - PLAY – Playback play
 - REWIND – Reverse playback
 - FASTFORWARD – Next sequence
 - NEXT/LAST – Next image/Previous image
 - MONITOR – Select monitor
 - CAMERA – select camera



Index

—C—

Configurable Actions.....	12
Copyright	6

—D—

Default Settings.....	16
Disclaimer	6

—I—

Installation.....	8
-------------------	---

—J—

Joystick options.....	13
Joystick Options.....	14

—L—

Licensing.....	10
Error Messages.....	11, 14

—S—

Serial Port setup	14
-------------------------	----

—T—

Target Audience.....	2
Trademarks.....	6

Milestone Systems offices are located across the world. For details about office addresses, phone and fax numbers, visit www.milestonesys.com.



The Open Platform Company