



YOU CAN RELY ON DEFY

DTD310
DTD311

TUMBLE DRYER

SENSOR DRYING TECHNOLOGY

Record in the space below the listed information for future reference.

The serial number is found on the serial label located on the inside of the door on the dryer.

SERIAL NUMBER.....

DATE OF PURCHASE.....

PURCHASED FROM.....

.....

The manufacturer strives for continuous improvement. For this reason, the text and illustrations in this manual are subject to change without notice.

Index

Page Subject

- 2 Introduction.
- 3 The user manual.
Explanation of symbols used.
Unpacking.
- 4 Important safety information.
- 5 Installation.
Location.
Levelling.
Venting exhaust air to the outside.
Electrical connection.
- 6 Advice column.
What not to load in the dryer.
Loading.
- 7 The control panel.
Using the dryer.
Start.
Cancelling a programme during a drying cycle.
Adding more laundry.
- 8 Child lock.
Changing a programme during a drying cycle.
Programme end.
Programmes.
Anti-creasing cycle.
Buzzer cancel.
- 9 Programme progress indicators.
Programme selection guide.
- 10 Main programmes.
- 11 The door.
Lint filter.
Cleaning the humidity sensors.
- 12 Trouble shooting.
Cleaning.
- 13 Technical specifications.
Service centres.
- 14 Warranty.

Introduction

Dear customer,

Your new Defy tumble dryer was manufactured in a state of the art facility and has passed the strictest quality control procedures.

Please read this manual carefully before using your tumble dryer for the first time and then store it within easy reach for future reference.

This manual will provide you with information on how to operate and care for your tumble dryer to gain the maximum benefit from it.

We trust you will enjoy years of trouble free use.

Please register your product at

www.defy.co.za

DEFY APPLIANCES (PTY) LTD
P.O.BOX 12004
JACOBS
DURBAN
4026
SOUTH AFRICA

The user manual:

- This manual will provide you with information on how to safely operate and care for your dryer in order that you gain the maximum benefit from it.
- Pay particular attention to any safety instructions.
- Please read all additional documents supplied with your dryer.
- Please note that this manual is used for several similar but different models. Please check for relevance regarding your particular model.

Explanation of symbols used in this manual



Important safety information. Warning for hazardous situations with regard to life and property.



Caution; Warning for supply voltage.



Caution; Warning for fire hazard.



Caution; Warning for hot surfaces.



Read the instructions.



Useful information. Important information or useful hints about usage.

Unpacking

Remove all packaging.

Ensure that packing material is disposed of in a responsible manner and that any plastic bags are cut up to prevent children playing with them and accidentally suffocating.

If the dryer is damaged in any way do not use it. Report the damage to your dealer who will take the necessary corrective action.



Figures represented in this instruction manual are schematic and may not correspond exactly with your dryer. If certain features are not included in the dryer you have purchased, they may be model specific and therefore only valid for some models.

1 Important safety information

- Read and understand the safety instructions before using the dryer. Any failure of the dryer or losses caused by ignoring these instructions are not covered by warranties or liabilities.
- This dryer is not intended for use by persons (including children) with reduced physical, sensory or mental capabilities or lack of experience and knowledge unless they have been given supervision or instruction concerning the use of the dryer by a person responsible for their safety. Children should be supervised to ensure that they do not play with the dryer.



Warning against electric shock

- The dryer is equipped with a 3 pronged earthed plug which must be plugged into an appropriate and easy to reach earthed wall socket.
- Do not attempt to modify the plug.
- Do not use a double adaptor, multi-plug or extension cord.
- If the supply cord is damaged it should be replaced by an authorised service agent to avoid an electrical hazard.
- Do not attempt to repair the dryer yourself. Repairs should only be undertaken by authorised service agents.
- Never touch the plug with wet hands nor pull on the cable to unplug the dryer.
- Never wash the dryer with water.



Warning against possible explosions

- Do not place combustible materials such as petrol, alcohol or thinners near or in the dryer. Neither attempt to dry fabrics which have been soaked with or exposed to these materials.
- Do not operate the dryer if a gas leak or spillage of combustible liquids has occurred nearby.



Warning against fire

- Empty pockets of cigarette lighters and matches.
- Do not attempt to dry cushions or quilts as these will accumulate excessive heat.

- Do not dry unwashed fabrics. Fabrics must be damp before drying them.
- Garments bolstered with rubber foam (latex foam), shower caps, water resistant textiles, materials with rubber reinforcement and rubber foam pads should not be dried in the dryer.
- Do not connect the air outlet of the dryer to chimneys used to exhaust the fumes from gas or fuel burning products.
- Do not locate the dryer on a carpeted floor, as this may inhibit free air circulation under the dryer.



Warning against personal injury

- Do not touch the laundry drum until the dryer stops operating.
- Check the drum before closing the door. Pets and children have been known to climb inside.



General safety instructions

- The dryer is designed for domestic use only and it should be used for no other purpose other than that for which it was designed.
- Follow the drying instructions on garment care labels.
- Remove any coins, pins, screws, stones or sharp objects from clothing before placing them in the dryer.
- Underwear that contains metal reinforcements should not be placed in a dryer. Damage to the dryer can result if the metal reinforcements come loose during drying.
- Do not sit or stand on the dryer nor place heavy objects on top as deformation of the control panel and plastic components could occur.
- Do not overload the dryer.
- Always clean the lint filter before or after each drying cycle. Never operate your dryer without the lint filter installed.
- Do not allow fibres, dust and dirt to accumulation around the exhaust outlet and adjacent areas.
- Unplug the machine and keep the door closed when it is not in use.
- The final part of the drying cycle includes a cool down period to minimise creasing and to ensure that fabrics are de-stressed.

2 Installation

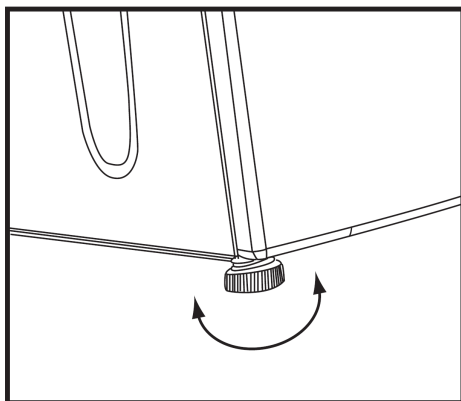
i Ensuring the correct installation is the customer's responsibility.

Location

- The dryer should be located in a well ventilated room, away from heat sources such as gas, oil or coal fired appliances.
- Position the dryer on a flat, even, uncarpeted floor.
- The dryer vents to the outside and utilises a dedicated air outlet hose for this purpose. For this reason it is best to position the dryer near an outside facing wall or window.
- Ensure that an electrical supply point is within easy reach of the power cord.

Levelling

- Level the dryer by turning the adjustable feet either in or out.
- Two rubber friction pads may be fitted under the adjustable feet to help prevent movement of the dryer on slippery surfaces. If required, these may be purchased from your nearest **Defy Service Centre**. The friction pads are easily clipped into the front adjustable feet of the dryer.

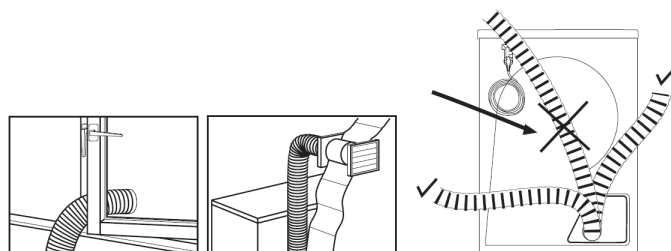


Venting exhaust air to the outside

- The dryer must be vented to the outside, either by means of the flexible exhaust tube supplied or via a permanent installation.



- Insert the adaptor piece into the exhaust outlet at the rear of the dryer, and screw one end of the flexible exhaust tube into the adaptor.
- The other end of the exhaust tube may be directed through an open window or connected to a wall mounted vent.
- The sketch above shows the preferred direction the tube should follow.
- The exhaust air may not be directed into chimneys, flues or fireplaces
- If required, a permanent exhaust pipe may be installed and should be routed with as few bends as possible so as not to restrict the airflow.
- The maximum length of such a pipe is given below.



	Hose	Pipe
Maximum length	4 m	5 m
1 elbow 45°	-1.0 m	-0.3 m
1 elbow 90°	-1.8 m	-0.6 m
1 elbow 90° short		-2.7 m
1 wall passage	-2.0 m	-2.0 m



Electrical connection

- The dryer must be plugged into a dedicated 230V. 16A. earthed wall socket.
- Do not use a double adaptor.
- The manufacturer and seller do not accept responsibility for any damage due to incorrect electrical connection.
- If the power cord needs replacing, use only a genuine type 'X' cord available from the nearest Defy Service Centre. The power cord must only be replaced by an authorised service agent to avoid an electrical hazard.

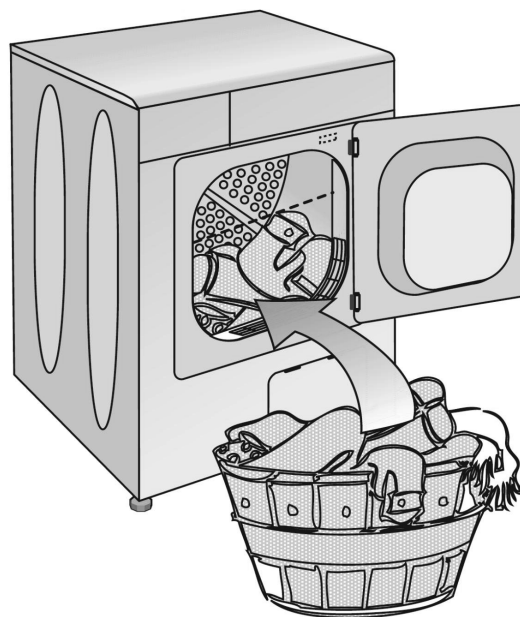
The following items must NOT be placed in the Dryer as they pose a fire risk:

- Chemically impregnated fabrics such as mops or cleaning cloths saturated with wax or inflammable solvents.
- Rubber backed articles, rubber boots, and tennis shoes.
- Clothes fitted with foam rubber pads.
- Garments treated with dry-cleaning fluid or a combustible solution.
- Durable pleated items other than permanent press.
- Fibre-glass or leather items.
- Cushions, quilts and similar stuffed items as these accumulate heat.
- Gas lighters that have accidentally been left in pockets.

Loading

- Do not overload the machine. We recommend loading the drum to the halfway mark.
- Do not place dripping wet articles in the dryer. As much water as possible should be extracted before placing them in the drum.
- Clothes should not be loaded in a tangled condition as this will prolong the drying time.
- Mix small and large articles for faster drying time. Shake out each article for more even drying.
- It is recommended that synthetic whites and coloured articles are not mixed until their colour fastness has been established.
- Add a few hand towels to act as buffers when drying a very small load.
- Large items tend to retain a certain position in the drum. To ensure thorough drying it may be necessary to remove these articles midway during the drying cycle and reposition them before continuing.
- Bulky duvets and eiderdowns may not be suitable even if the dry weight of the item is within the prescribed limits. Their size may prevent them from tumbling.

Recommended loading level



Cotton T-shirts and Knit underwear

- Dry only to a slightly damp stage. If these articles are allowed to tumble too long, the knitted cotton may shrink. This may be corrected by re-dampening or by wearing the article.

Curtains and slip covers

- Remove from the dryer while slightly damp.
- Iron and hang immediately.

Chenille and candlewick bedspreads

- Dry only one bedspread at a time.
- Remove as much moisture as possible before placing the bedspread in the dryer.
- Dry completely.

Lingerie

- Use the Delicate programme.
- Remove soon after drying to minimize creasing.
- To avoid tangling, it is recommended that nylon stockings are enclosed in a nylon mesh bag during drying.

Knitted synthetics

- Use a dry towel as a buffer, rubbing surfaces may cause small beads to form, (Turn these articles inside out).

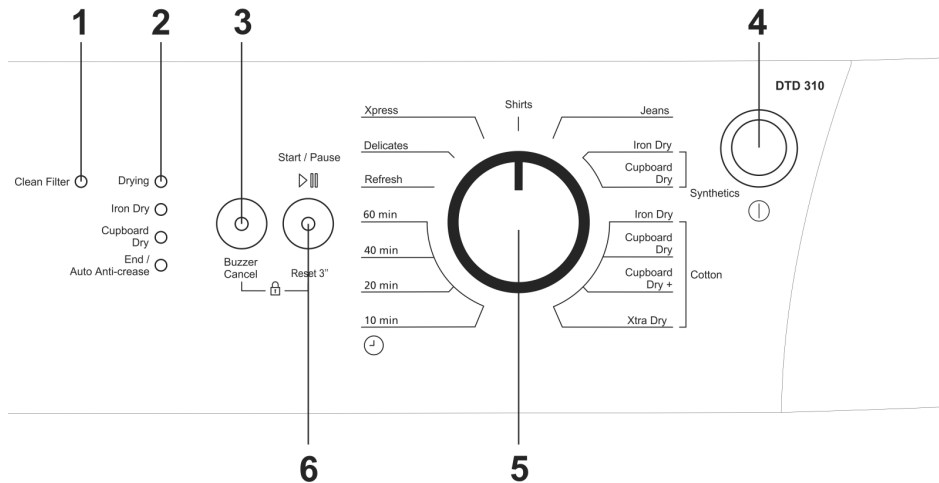
Corduroy

- Turn inside out.
- Remove while still damp and re-shape.

Silks, Dacrons and nylons

- Place in the dryer separately.
- Do not over-dry.

4 Control panel



1 Filter cleaning warning light.

- Switches on when filter requires cleaning

2 Programme follow up indicator lights.

- Shows the progress of the current programme

3 Buzzer Cancel.

- Cancels the end of programme chime/ buzzer

4 On / Off button.

- Switches the machine on

5 Programme selection knob.

- Selects a programme

6 Start / Pause / Cancel button.

- Starts, Pauses or Cancels a programme

5 Using the dryer

Start

- Sort the laundry according to fabric type.
- Place the laundry in the drum.
- Close the door.
- Switch on by pressing the *On / Off* button.
- Turn the *Programme Selection Knob* to the required setting.
- Press the *Start / Pause / Cancel* button.
- The dryer will commence with the selected drying cycle and the relevant indicators will light up commencing with "Drying".

Cancelling a programme during a drying cycle

- Do not switch the dryer off. Heat soak could damage the electronics.
- Stop the programme by pressing the *Start / Pause / Cancel* button.
- Press the *Start / Pause / Cancel* button once more and hold it in for 3 seconds until the *End Anti crease* indicator lights up.
- Set the time selection knob to *Freshen up*
- Press the *Start / Pause / Cancel* button
- Wait for the programme to end.

Adding more laundry

- This only makes sense if the additional laundry is added near the beginning of a programme. Otherwise the load would comprise semi-dry and damp laundry.
- Press the *Start / Pause / Cancel* button.
- Open the door and place the additional laundry in the drum.
- Press the *Start / Pause / Cancel* button.



Caution:

- The inside of the drum is hot. Avoid contact to prevent burns.

Child lock

- To prevent accidental operation of the dryer, the controls may be locked during operation or in standby mode.
- Press the *Buzzer Cancel* and the *Start/Pause/Cancel* buttons simultaneously and hold down for 3 seconds.
- One of the progress indicators will flash.
- When the dryer is in locked mode, only the *ON/OFF* button will function.
- To unlock, repeat the above procedure.
- The lock is also deactivated when the machine is restarted by pressing the *on/off* button.

Changing a programme during a drying cycle

Use this feature to dry laundry at higher or lower temperature after the dryer has started.

- Press and hold the *Start/Pause/Cancel* button for about 3 seconds to cancel the programme.
- Select 'Iron Dry or Extra dry' using the programme selector knob.
- Press and hold the *Start/Pause/Cancel* button to start the programme.

Note

- Deactivate the *Child lock* before cancelling or ending a programme while it is running
- Press the *Start/Pause/Cancel* button for 3 seconds to cancel a programme. The filter cleaning warning light glows, advising that the programme was cancelled.
- Turning the *programme selector knob* in either direction will end a programme while the machine is running. However the warning light in this instance, will not glow. Only the drying light glows and the machine remains on standby until a new programme is selected and the *Start/Pause/Cancel* button is pressed.

Programme end

- The drying cycle is completed when the programme progress indicators show *End -Anti creasing* and *Clean filter*.
- Throughout the anti creasing stage the *End-anti ceasing* indicator will flash. The programme may then be ended at any time although if left alone it will end automatically.

- Press the *On / Off* button
- Open the door and remove the laundry.

NOTE

- Whenever the door is opened during a programme, the programme will be paused automatically and the *Start / Pause / Cancel* indicator will flash. Close the door and press the *Start / Pause / Cancel* button for the programme to continue.

Programmes. There are:

- Timed programmes of 60, 40, 20 and 10 minutes)
- Two synthetic programmes (Ready to iron and Ready to wear)
- Three cotton programmes (Extra dry, Ready to wear and Ready to iron)
- A Delicates programme
- A Freshen up programme.
- The programme selector knob may be turned in either direction to select the required programme.
- Always choose a programme which is suitable for the fabric type and observe the symbols on garment care labels.
- With a little practice you will soon determine which programme suits your requirements.

Anti -Creasing

- The laundry may be removed after a drying cycle has been completed.
- Alternatively, the laundry may be left in the drum, in which case the machine will automatically perform an *Anti Creasing* phase.
- Throughout this phase the laundry is separated, smoothed and cooled. The Anti creasing indicator will flash and the drum will rotate briefly every 60 seconds for about 2 hours.

Buzzer cancel

- At the end of a drying programme and throughout the Anti creasing phase, a buzzer will sound.
- If this is annoying, the chime/buzzer may be muted by pressing the *Chime Cancel* button.

Programme progress indicators

This vertical row of indicators show which phase of the drying cycle is operational.

Drying ☐

Iron Dry ☐

Cupboard Dry ☐

End / Auto Anti-crease ☐

“Drying”

The Drying LED will glow during the “Drying” process.

“Iron Dry”

The Iron dry LED will glow during “Iron dry” process.

“Cupboard dry”

The Cupboard dry LED will glow during “Cupboard dry” process.

“End/ Anti-creasing”

The End/Anti-creasing LED will glow during “End/Anti-creasing ” process.

If more than one LED flashes concurrently, it means there is a malfunction or a failure (please see Trouble shooting).

Programme selection guide

Choose the appropriate programme from the table below. Select the desired programme with the programme selection button.

Xtra dry	Dry at high temperature only for cotton laundry. Thick and multi layered laundry (towels, linens, jeans etc.) are dried in a way that they do not require ironing before placing in the wardrobe.
Cupboard dry	Normal laundry (tablecloths, underwear etc.) are dried in a way that they do not require ironing before placing in the drawers.
Cupboard dry plus	Normal laundry (tablecloths, underwear etc.) are dried in a way that they do not require ironing before placing in the drawers, but more than those in the cupboard dry option.
Iron Dry	Normal laundry (Shirts, dresses etc.) are dried ready to be ironed.

Programme recommendations

Textile type	Programme	Load
White and coloured Cotton and Linen, Towels, Shirts, Sheets, Table cloths, Napkins.	Cupboard dry Iron dry	3-6kg.
Easy care, Synthetics, Mixed fabrics.	Cupboard dry	1.5-3kg

If the dryness level is not satisfactory set the programme selector to one of the timed programmes. 60 ,.40, 20, or 10 minutes

Main programmes

Depending on the type of laundry that is to be placed in the dryer, the following main programmes are available:

Cottons

This programme dries at high temperature. It is recommended for cotton items (such as bed sheets, quilt cover, underclothing, etc.).

Synthetics

Dry less durable laundry with this programme. It dries at a lower temperature compared to the cottons programme. Recommended for synthetic laundry (such as shirts, blouses, synthetic/cotton blended laundry, etc.). Do not dry curtains and lace in your machine.

Special programmes

Extra programmes are available to suit your drying requirements:

Additional programmes may differ according to the model of your machine.

Mini

Use this programme to dry cottons that have been spun at high speeds in your washing machine. Mini is able to dry 1,2 kg Cotton laundry (3 Shirts / 3 T-Shirts) within 30 minutes.

In order to obtain better results from the dryer programs, your laundry must be washed with a suitable program and spun at the recommended spin speeds of your washing machine.

Shirts

Dries shirts in a way so that they are less creased and more easily ironed.

Shirts may be slightly damp at the end of the program. It is advised not to leave the shirts in the dryer. Take them out of the dryer as soon as the programme ends and hang them in order to prevent them being creased.

Jeans

Use this program to dry jeans that have been spun at high speeds in your washing machine.

Delicates

Dries very delicate laundry (silk blouses, fine underwear, etc.) at a lower temperature.

Please ensure that you only place delicates in the dryer that are suitable for drying.

It is recommended to use a cloth bag to avoid certain delicate garments and laundry from getting creased or damaged. Take your garments out of the dryer as soon as the programme ends and hang them in order to prevent them being creased.

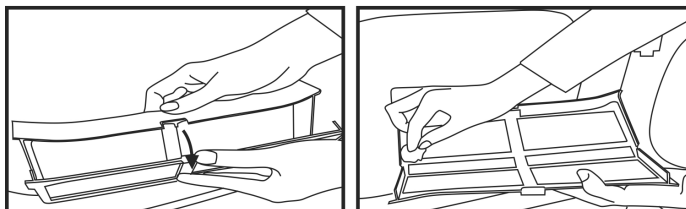
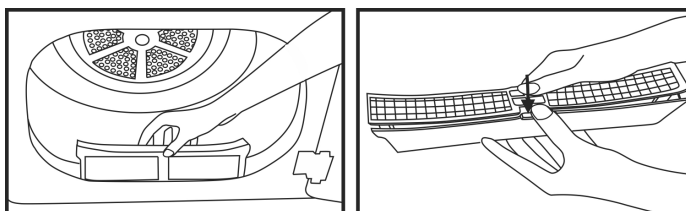
Ventilation

A 10 minute programme without heat.

Used for aerating stuffy clothes that have been stored for some time.

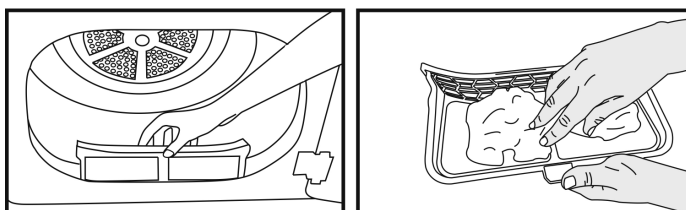
The door

- Open the door by pulling on the handle
- Opening the door will automatically stop the dryer operation.
- To close the door, push until a click is heard.
- If required, the door hinging may be reversed so that the door opens from right to left.
- Note . Activating the child lock, does not lock the door



Lint filter

- It is essential that the lint filter be cleaned after every drying cycle
- At the end of a programme the indicator will glow as a reminder to clean the filter.
- Pull the lint filter out and open it.
- Unfold the filter and carefully remove the accumulated lint using a soft cloth.
- Fold, close and return the filter to its housing.



A warning light will glow as a reminder that the filter is to be cleaned after the completion of a programme.

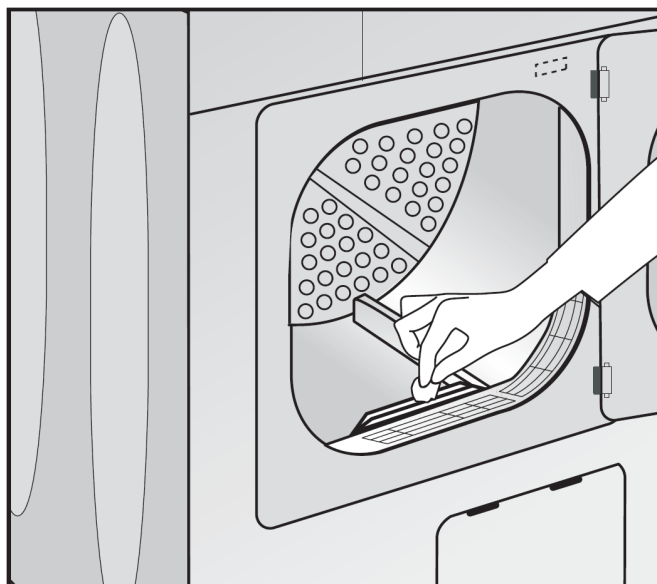
If the filter cleaning warning glows continuously, please refer to, "Trouble shooting".

Warning indicators

- Warning indicators may differ according to the model of your dryer.

Cleaning the humidity Sensors

- Humidity sensors are located on the inside of the drum ribs. These determine when the laundry is dry.
- The ribs should be cleaned every three months.
- Wait till the dryer has cooled down and wipe the ribs with a soft cloth dipped in vinegar, then wipe dry.



Since the following are not factory faults, they are the owner's responsibility.

- Damage to exterior finish.
- Breakage of components
- Damage through improper use or installation of the dryer.
- Damage caused by moving the dryer.

Problem –Check

The dryer or a programme will not start.

- Has the ON/Off button been pressed?
- Has a programme been selected?
- Has the Start/Pause /Cancel button been pressed?
- Has the power cable been plugged in?
- Has a house circuit breaker tripped?

The 'End-Anti crease' indicator flashes for up to two hours.

- This is normal. The anti crease stage can last up to two hours. If you wish to reduce the time, switch the dryer off and remove the laundry.

The buttons on the control panel do not respond to pressing.

- Check that 'Child lock' has not been activated. If the fault persists, unplug the dryer, wait a few minutes and try again.

The 'Drying' indicator flashes.

- Press the ON/Off button to switch the dryer off and call service for assistance.

The programme stops for no apparent reason.

- Is the door open?
- Has the power supply been interrupted?
- Press the 'Start/Pause/Cancel' button.

The laundry is too moist or the drying time is too long or the Clean filter indicator flashes.

- Has the drum been overloaded?
- Check that the ventilation slots are free of obstructions.
- Check for blockages in the vent tube.
- Clean the 'Fluff filter.'
- Confirm that the correct programme was used.

Textiles have shrunk or damaged

- Only dry textiles labelled safe for tumble drying. Choose a suitable programme for the fabric type. Follow the instructions on the garment care label.

Laundry is still wet after drying

- Select a more appropriate programme.
- Use a timed programme.
- Clean the lint filter.
- Do not overload dryer.
- Spin laundry at a higher speed in your washing machine.

If you experience a problem with the machine, please check the following before calling a Service technician.

You may be charged for a service call, even during the warranty period, if no fault is found.

1. Check that the cord is plugged in and that the wall socket switch is on.
2. Check that there is power to the wall socket by testing the socket with a small electric appliance such as a hair dryer.
3. Check if a house circuit breaker has tripped out.
4. Check that the laundry is evenly distributed inside the drum.
5. Check that the machine is not overloaded.
6. Check that the dryer door is firmly closed.
7. Check if the ON/OFF button is pushed in.
8. Check that the lint filter has been cleaned.

- Always clean the lint filter before every drying cycle. Never operate the dryer without the lint filter in place.
- Clean the inside of the exhaust duct regularly. Do not allow fibres, dust or dirt to accumulate round the exhaust outlet.
- When required, clean the cabinet and control panel using a damp soapy cloth.
- Rinse and dry.
- Do not use abrasive scouring powders or aggressive cleaning solutions as these may damage the plastic parts of the dryer.

8 Technical specifications

Drying method	Vented, electronic sensor controlled
Height (adjustable)	850mm
Width	595mm
Depth	540mm
Height adjustment of feet	5mm
Weight, unpacked	31kg approx.
Capacity (max)	8kg
Rated power output	See type label (located behind loading door)
Model code	See type label (located behind loading door)

9

Service Centres

If you have followed the instructions and still have a problem, contact the nearest Defy Service Centre. They will be able to advise you on any aspect of the product or send a qualified technician to repair it.

BLOEMFONTEIN

160 Long Street, Hilton,
Bloemfontein 9301.
Tel. 051 400 3900
Bloemfontein.Service@defy.co.za

CAPE TOWN

5A Marconi Rd.
Montague Gardens, 7441.
Tel. 021 526 3000
CapeTown.Service@defy.co.za

DURBAN

35 Intersite Avenue,
Umgeni Business Park, Durban 4051.
Tel. 031 268 3300
Durban.Service@defy.co.za

EAST LONDON

16 Bowls Rd. Arcadia, East London 5201.
Tel. 043 743 7100
EastLondon.Service@defy.co.za

JOHANNESBURG

Cnr. Mimetes & Kruger Sts. Denver ext.12
Johannesburg. 2094.
Tel. 011 621 0200 or 011 621 0300
Gauteng.Service@defy.co.za

POLOKWANE

87 Nelson Mandela Drive. Superbia 0699.
Tel. 0152 92 1166 / 7 / 8 / 9.
Polokwane.Service@defy.co.za

PORT ELIZABETH

112 Patterson Road,
North End, Port Elizabeth 6001.
Tel. 041 401 6400
PortElizabeth.Service@defy.co.za

PRETORIA.

Block A1 Old Mutual Industrial Park.
Cnr. D.F.Malan Drive & Moot Str.
Hermanstad. 0082.
Tel. 012 377 8300
Pretoria.Service@defy.co.za

**OTHER AREAS ARE SERVICED BY OVER 200 AUTHORISED SERVICE AGENTS.
PLEASE CONSULT THE NEAREST REGIONAL DEFY SERVICE CENTRE FOR DETAILS**

This certificate is issued by DEFY APPLIANCES LIMITED manufacturers of Defy and Ocean products, hereinafter the Company, to the original purchaser only, of the appliance described on the certificate and shall constitute the only warranty given in respect of this appliance.

The Company warrants to the original purchaser that for a period of TWO YEARS from date of purchase the appliance is free from defect under normal domestic use, both in workmanship and material, subject to the following conditions.

1. Repair or replacement of any part of this appliance, found by the Company to be defective, shall be at the election of the Company. The Company reserves the right to effect such service through any of its Service Divisions or Authorised Service Dealers. The cost of such service shall be borne by the Company in full, provided that the appliance is located no further than 50km from a Company Service Centre or an Authorised Service Dealer. Where the appliance is located beyond the 50km radius, the purchaser shall be liable for the standard travelling charges, as determined by the Company.
2. Vitreous enamelware, fuses and lamps are specifically excluded from these warranties. It is an express condition of these warranties that the purchaser takes due care and attention in the use and maintenance of the appliance. Abuse, misuse in conflict with operating instructions, connection to incorrect voltages and subjection to commercial use shall release the Company from its obligations.
3. This warranty shall become void and cease to operate if the appliance is dismantled by, or any repairs to the appliance are effected by any persons not duly authorised by the Company, or if substitute parts not approved by the Company are used in the appliance, or if the serial number of the appliance is removed.
4. The Company shall not be responsible for damages resulting from fire, flood, civil disturbances or any Act of God. The Company shall not, in terms of these warranties be responsible nor held liable for any consequential loss or damage of any kind caused by or due to the failure or malfunction of the appliance.
5. The Company shall not be responsible for transportation or other costs other than those incurred within the provisions of Point 1 of this Certificate.
6. These warranties shall not apply to the appliance if it is purchased or used beyond the borders of the Republic of South Africa, Namibia, Botswana, Swaziland and Lesotho.
7. Where service is requested under warranty and no fault or defect can be found by the Company, all costs incurred will be for the purchaser's account.
8. This Certificate as well as your invoice will serve as proof of purchase. For the purpose of warranty, it will be essential to produce this Certificate and invoice. Failure to do so, will render the purchaser liable for service costs.

**KEEP THIS CERTIFICATE AND SALES INVOICE AS PROOF OF
PURCHASE FOR WARRANTY PURPOSES.**