



***Native*soft** 

**NativeDoc**

2

# NativeDoc 2 User Manual

# NativeDoc 2 User Manual

## 1 Introduction

1.1	Welcome to NativeDoc 2	4
-----	------------------------	---

## 2 Write documentation for your code

2.1	JavaDoc/DoxyGen	6
-----	-----------------	---

## 3 HTML or XML Documentation Generation

3.1	Configure the documentation with the wizard	8
3.2	Generate the documentation	15

## 4 NativeDoc 2 Documentation Navigator

4.1	First contact with the Navigator	23
4.2	Refreshing the documentation	26
4.3	Add an external documentation	28

# Introduction



### Welcome to NativeDoc 2!

NativeDoc is a source code documentation tools for LiveCode.

It has been developed in focus of respecting already existing standard already available in other programming languages (DoxyGen and JavaDoc) in order to be easy to learn/use.

Almost all DoxyGen and JavaDoc tutorials about the writing of documentation block are applicable to NativeDoc, this documentation covers the configuration and the generation of the documentation.

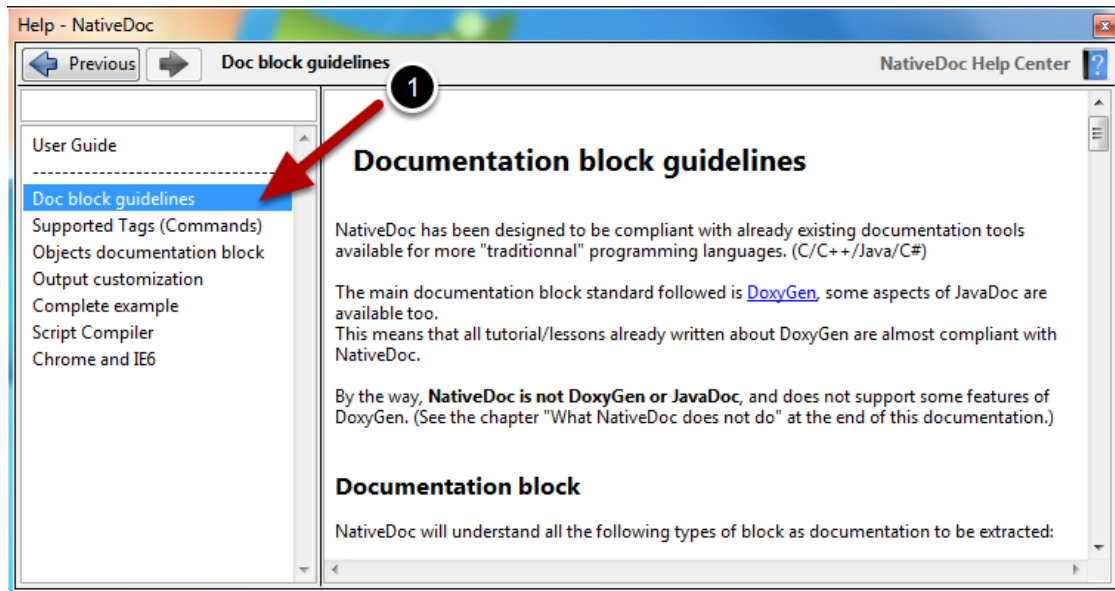
NativeDoc 2.0 add a Dictionary Navigator that enables you to navigate through **your** source code documentation written using Doxygen/JavaDoc tags.

**Note about screenshot:** Some parts of this manual was written for NativeDoc 1.x, all those screenshot are still valid for NativeDoc 2. If some screenshot have marked "Dam-pro NativeDoc" instead of NativeSoft, it is normal as NativeSoft previous name was Dam-pro.

# Write documentation for your code

How to write NativeDoc documentation blocks.

### NativeDoc Help Center



The list of supported block style and what NativeDoc handles is located inside the NativeDoc Help center. (1)

Before starting using NativeDoc, it is really recommended to follow a Doxygen or JavaDoc tutorial in your language, on google you will find easily a lot of well written one.

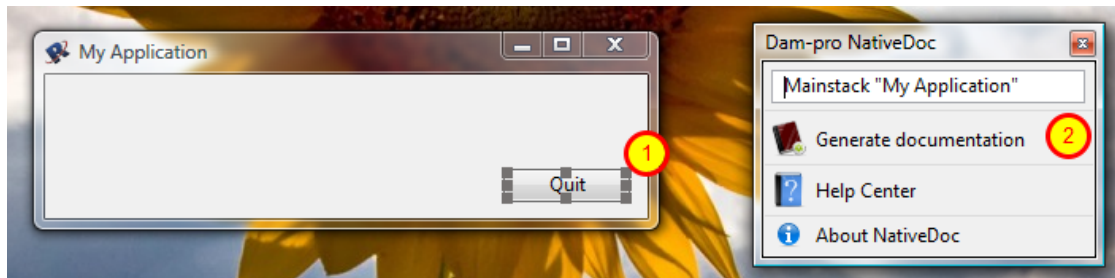
Then simply take a look at the NativeDoc documentation inside the NativeDoc help center, NativeDoc is almost fully compliant with JavaDoc/DoxyGen, differences are marked in the help center.

# HTML or XML Documentation Generation

## Configure the documentation with the wizard

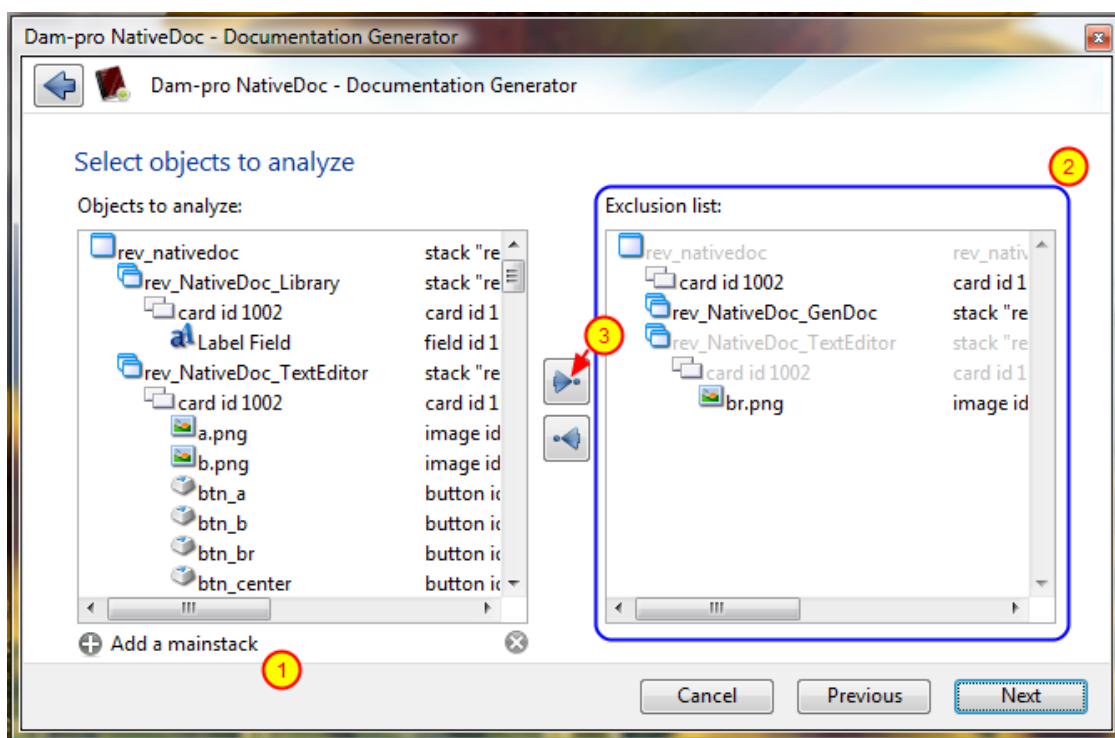
How-to that describes how to configure the documentation for yours projects.

### Select the mainstack of your project



NativeDoc stores generation parameters as custom properties inside the main stack of your project, simply select a substack or the mainstack itself (1) and click "Generate documentation" (2).

### The configuration wizard - objects to analyze



In order to makes things easier, NativeDoc brings a powerful wizard that helps you to configure your documentation.

This screen is the first one of the wizard, it enables you to select objects that you want to include inside the documentation and those that you do not wish to have in.



### Add a mainstack:

If your application have multiple mainstack, simply click on "Add a mainstack" (1) and select the mainstack that you wish to include.

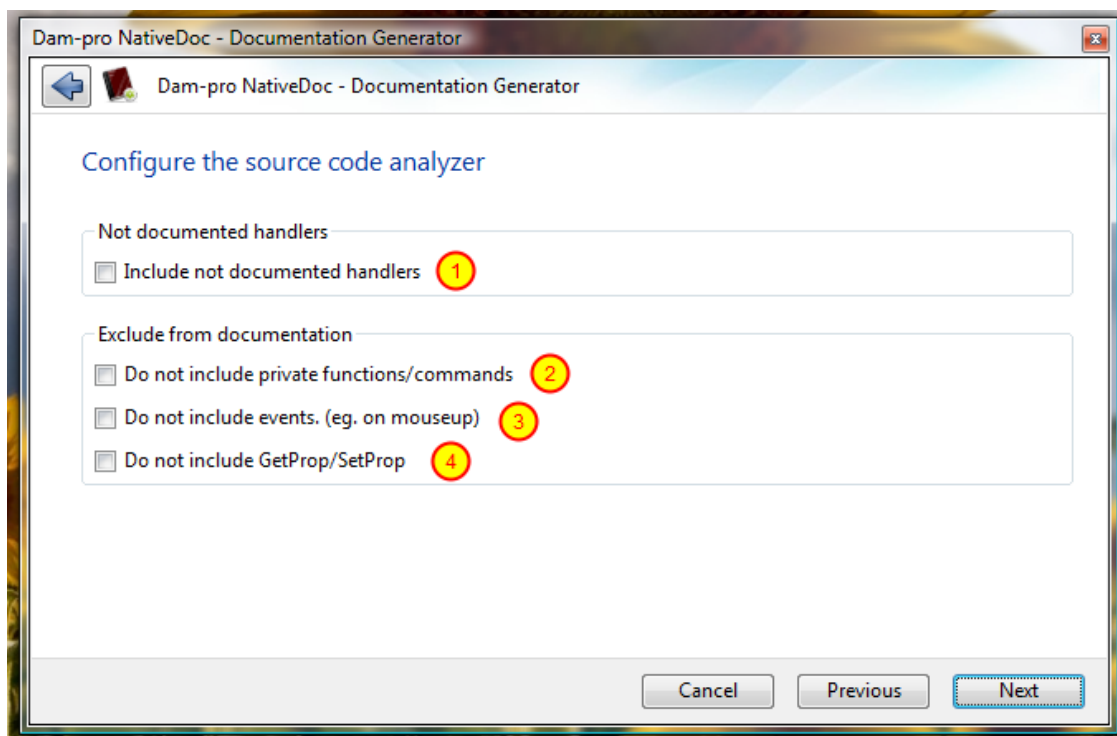
### Exclude objects from the documentation:

To not include a substack or a card or an object (2), simply select objects that you wish to not include in the left field, and click the right arrow button. (3)

### Add only a substack:

To add only a substack to be documented, add its mainstack, and exclude all other substacks.

## The configuration wizard - analyzer configuration



The source code analyzer can be configured in orders to fit your needs.

### Include not documented handlers (1)

Display entirely your application inside the documentation, including handlers not documented.

### Do not include private functions/commands (2)

Remove all private functions/commands from the documentation.

### Do not include events. (eg. on mouseup) (3)

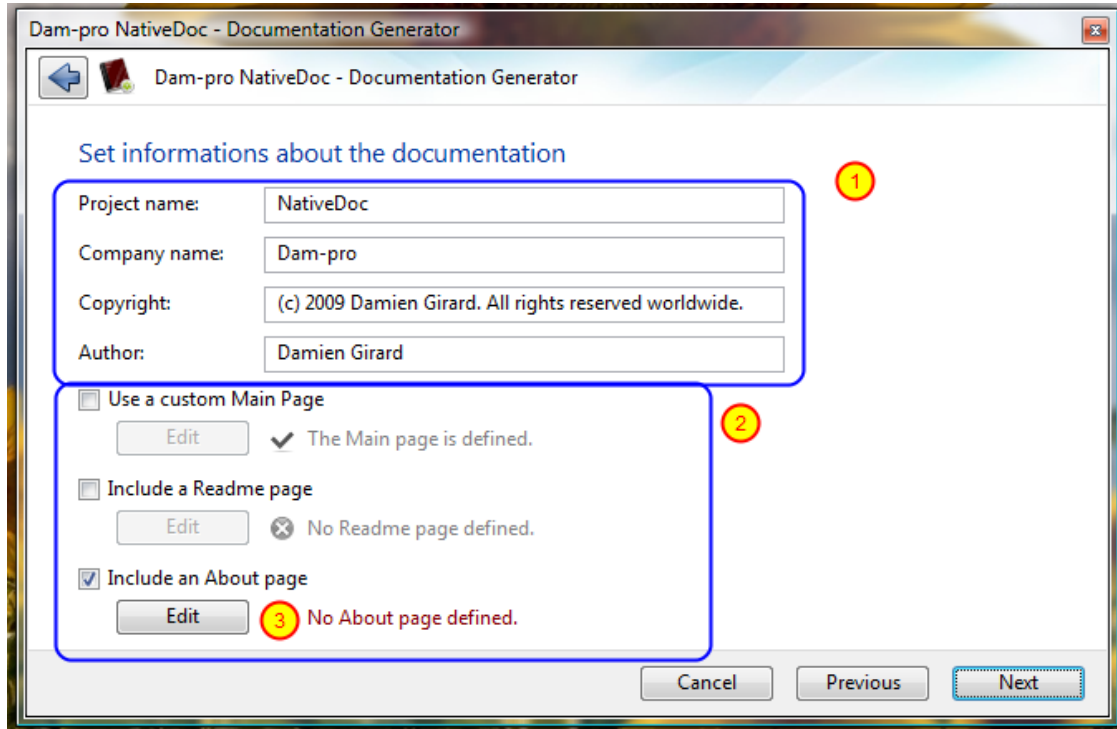
Remove all events from the documentation.

**Warning:** An handler is considered as event if it begins with "on" instead of "command"!

### Do not include GetProp/SetProp (4)

Remove all getprop/setprop from the documentation.

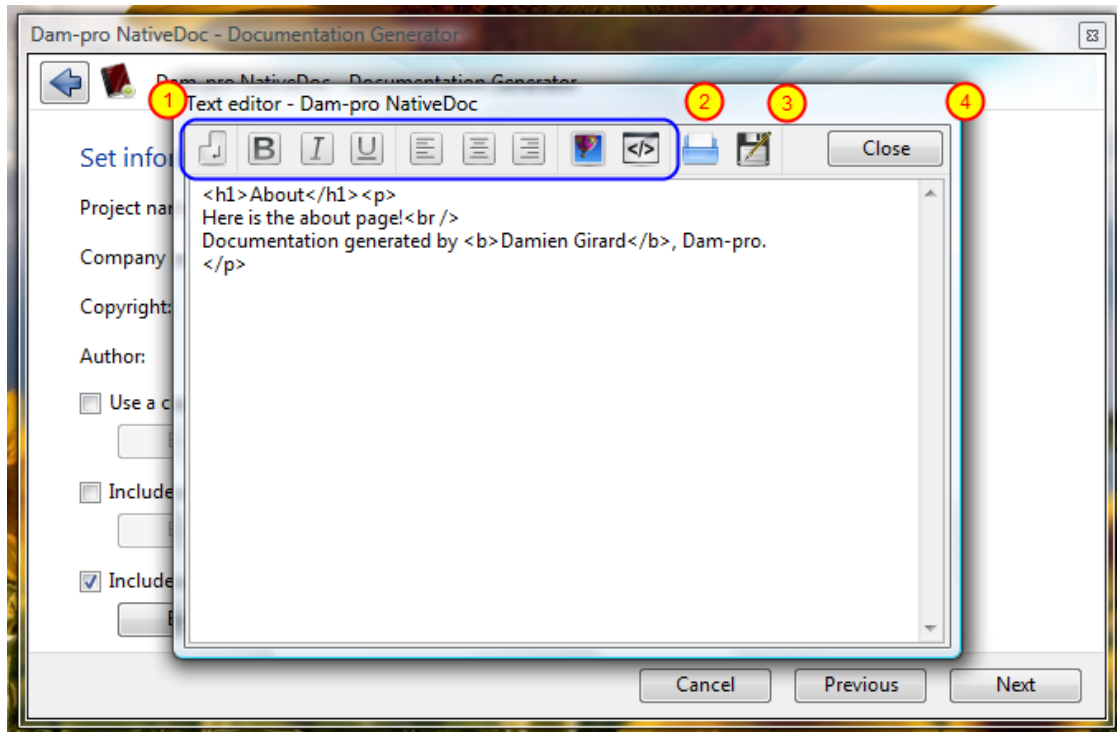
## The configuration wizard - documentation information



Set up the project name, the company name the copyright and the author of the documentation. (1)

### Custom pages (2)

If you want to include custom pages to the documentation, activate the associated button and click edit (3) to imports an already existing XHTML file or designs a new one.



The text editor enables you to define your custom page.

**Warning:** The custom page must be in XHTML Strict 1.0 format. If not, web browsers can display your page incorrectly.

Buttons located in (1) helps you to design the page.

### Open/Save

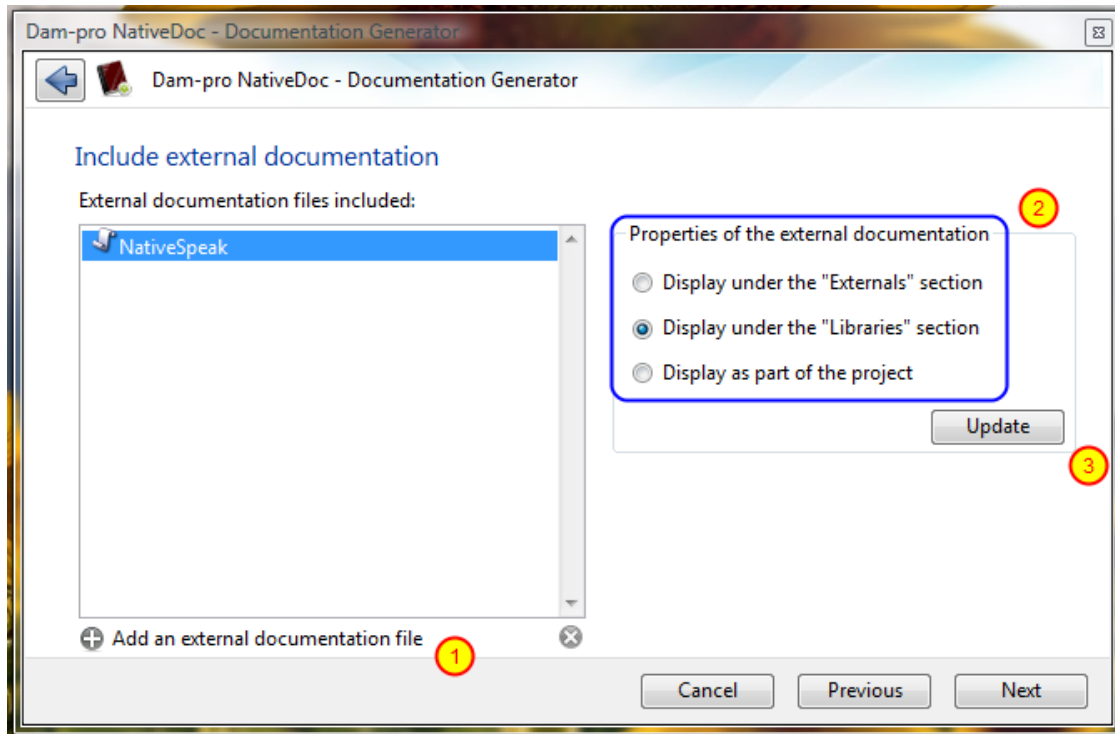
To open an external XHTML file, click the open button (2).

To save the edited text, click the save button (3).

### Apply modifications

To apply modifications, press the "Close" button (4).

## The configuration wizard - includes external documentation



NativeDoc can include external documentation stored in NativeDoc XML documentation format.

### **Include a documentation**

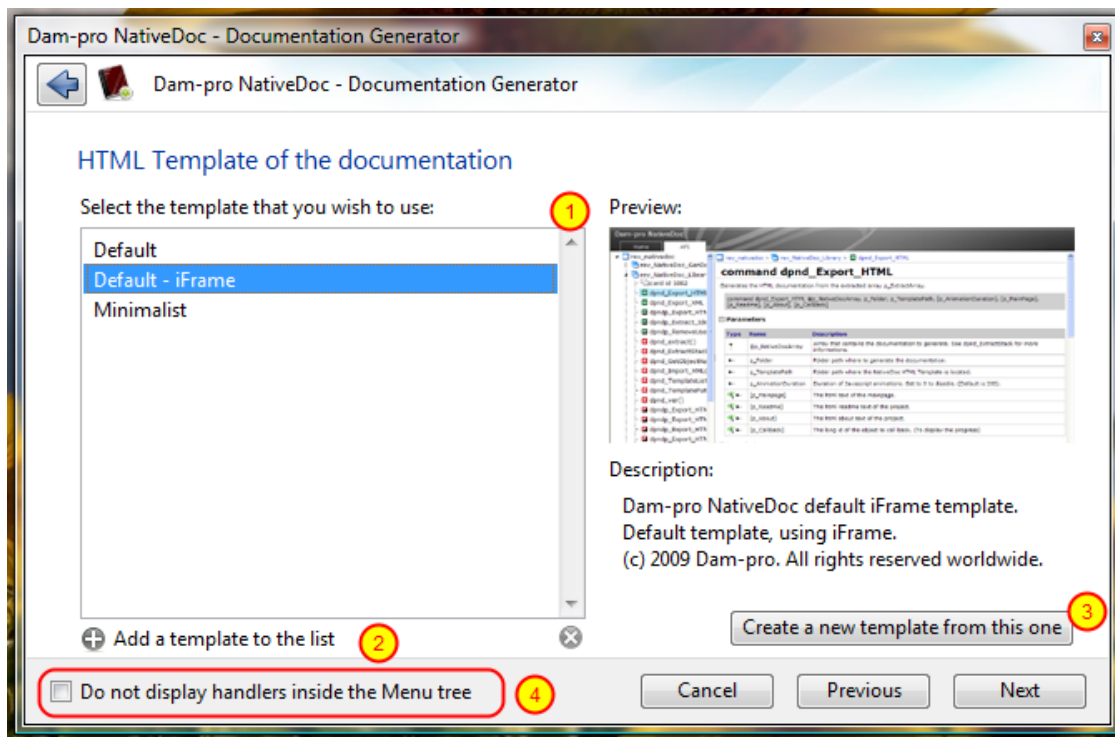
To include an external documentation inside your project documentation, click "Add an external documentation file" (1).

Then, select how the external documentation should be displayed inside the documentation (2).

### **Update an external documentation file**

To update an external documentation file to another one, click "Update" and select the new XML file (3).

## The configuration wizard - HTML Template



Select the HTML template that you wish to use (1), then click "Next".

### Add a template to the list

To add an HTML Template, click "Add a template to the list" (2), then click "Open the folder", and place HTML templates inside this folder.

### Create a new template from this one

Useful to create a custom template based on another one, but be aware that some template have copyright restriction and that you are not allowed to modify them.

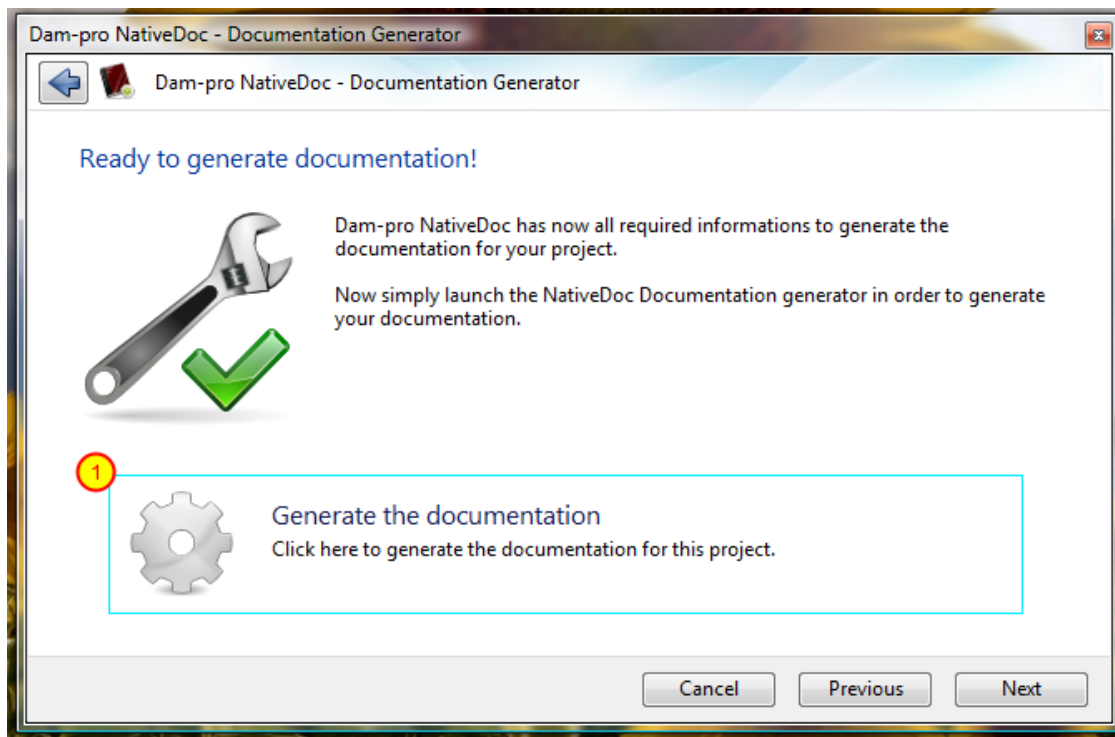
It is allowed to create custom templates from Dam-pro ones.

Click "Create a new template from this one" (3), and enter the name of the new template. Finally, the folder where the new template has been duplicated is opened.

### Do not display handlers inside the Menu tree (4)

Activates this option and inside the Menu Tree, only objects will be displayed instead of objects + handlers.

## Ready to generate!



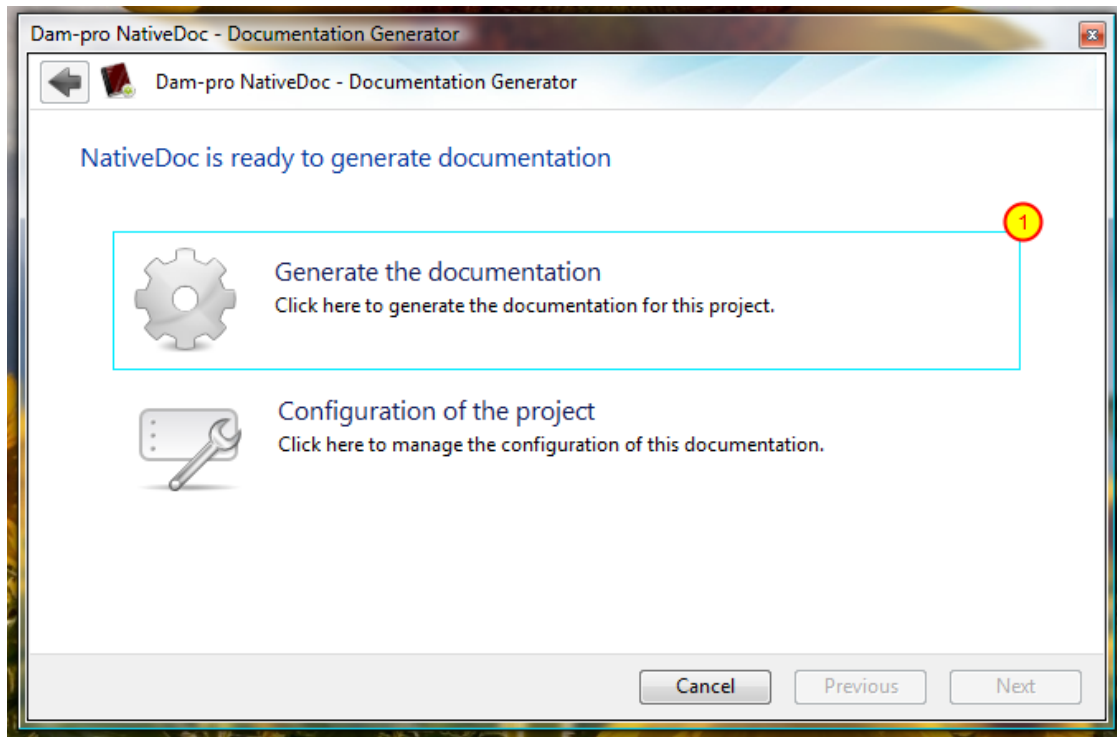
The documentation is now ready to be generated and exported. Click "Generate the documentation" to start the documentation and export process.

## Generate the documentation

---

Analyze your application, and generate the documentation.

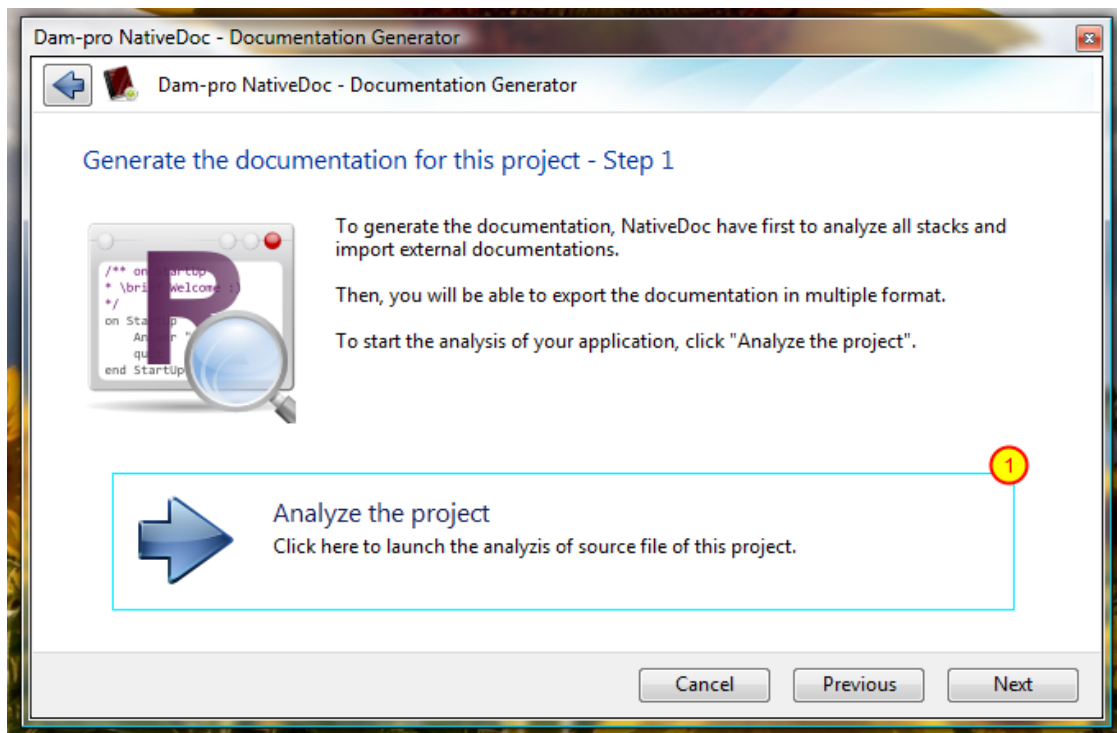
### Open the documentation generator



To open this screen, click "Generate the documentation" inside the NativeDoc toolbar.

Click "Generate the documentation" (1) to start the documentation generation process.

## First step - Analysis

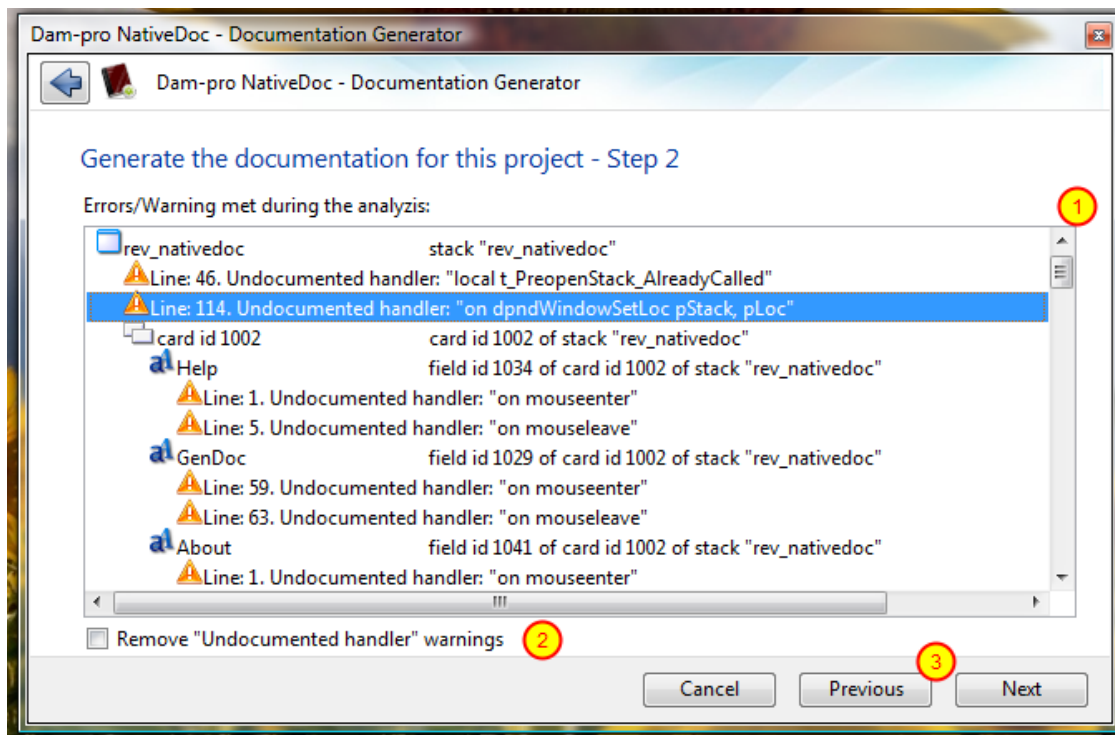


The first step of the generation is the analysis of your project.

Click "Analyze the project" (1) to begin the analysis.



## Second step - Solving analyzis errors/warning



This screen display all errors/warning met by the NativeDoc source code analyzer. (1)

To solve an error, simply double click on an error/warning line, and your script editor will open and select the line, then you have to fix the problem.

**WARNING:** Oftenly, the givens line is not the line where exactly the error is, but the line of the documentation block or the line of the handler.

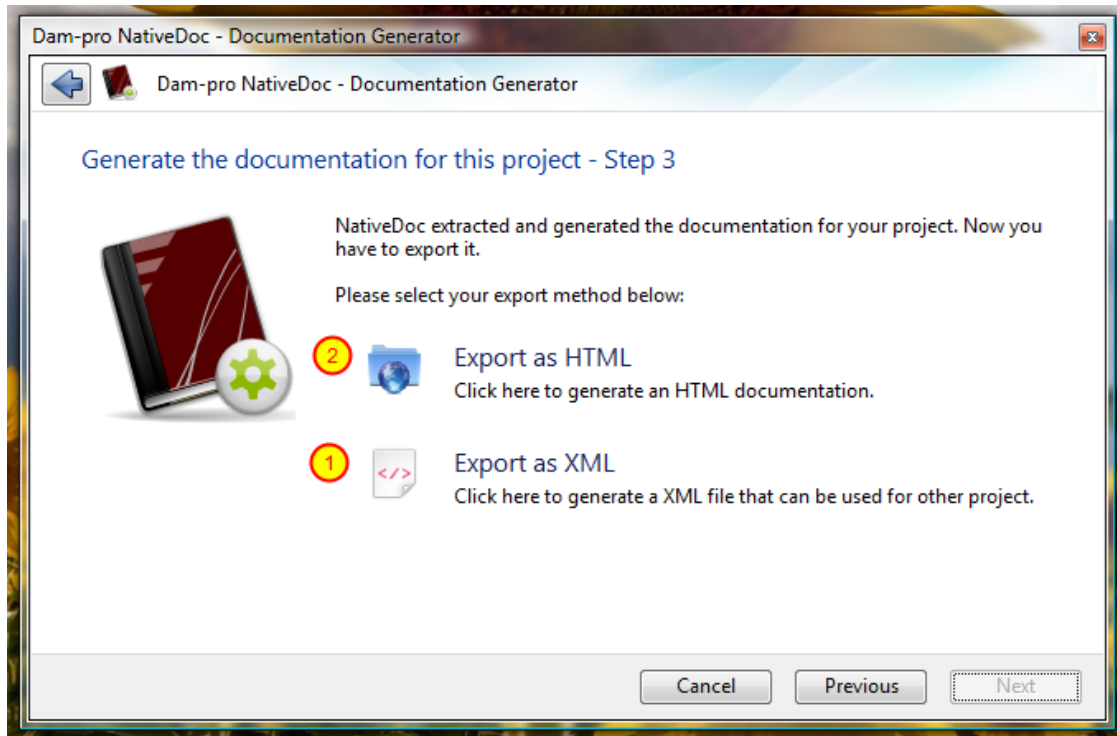
### Hiding the "Undocumented handler" warnings (2)

Activate this button to not display warnings of type "Undocumented handler".

### Relaunch the analyzis

Once you have fixed errors/warnings, click "Previous" (3) then relaunch the analysis.

### Third step - Export the documentation



The documentation has been prepared, and now can be exported.

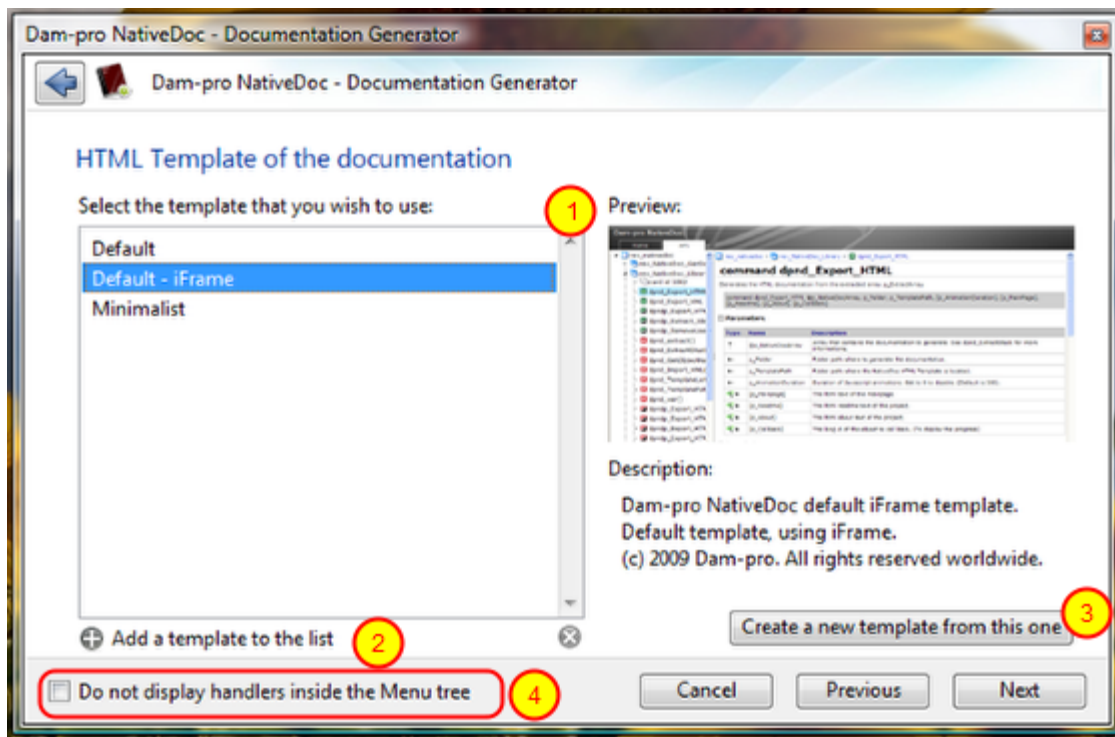
#### **Export the documentation as XML**

If you wish to re-use your documentation inside another projects, or you wish to re-generate it later, click "Export as XML" (1).

#### **Export the documentation as HTML**

To generate a documentation website, click "Export as HTML" (2)

## Export as HTML - Select the template



Select the HTML template that you wish to use (1), then click "Next" to begins the generation.

### Add a template to the list

To add an HTML Template, click "Add a template to the list" (2), then click "Open the folder", and place HTML templates inside this folder.

### Create a new template from this one

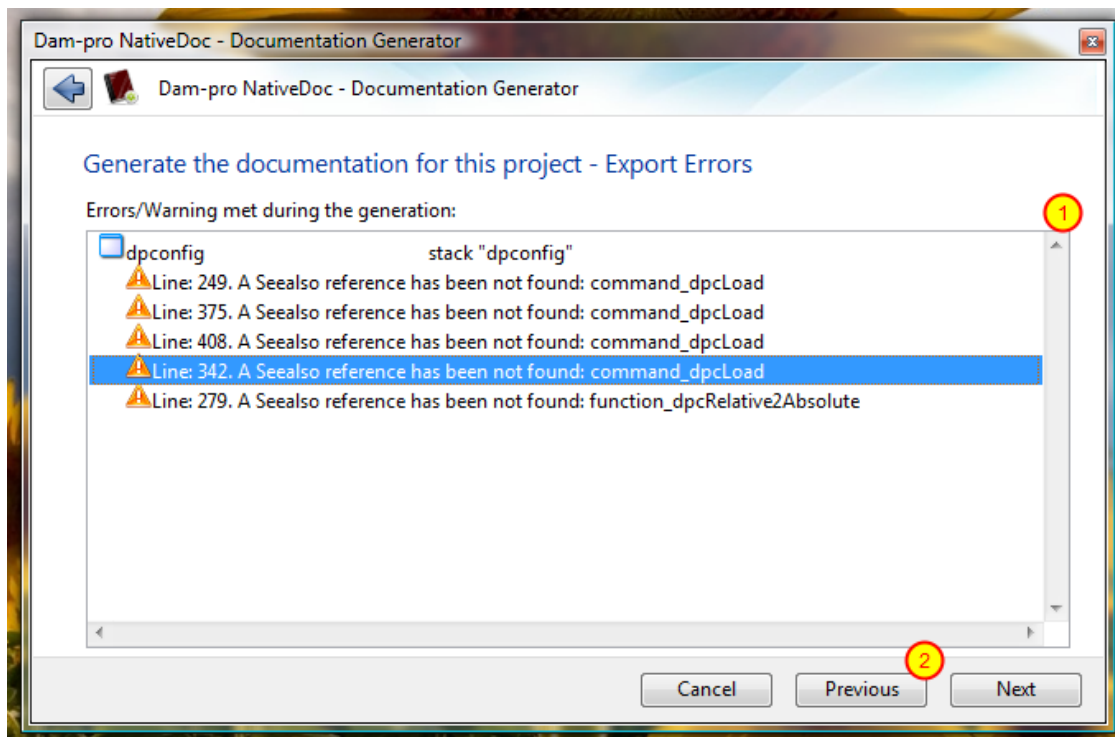
Useful to create a custom template based on another one, but be aware that some template have copyright restriction and that you are not allowed to modify them.

It is allowed to create custom templates from Dam-pro ones.

Click "Create a new template from this one" (3), and enter the name of the new template. Finally, the folder where the template has been duplicated is opened.

### Do not display handlers inside the Menu tree (4)

Activates this option and inside the Menu Tree, only objects will be displayed instead of objects + handlers.



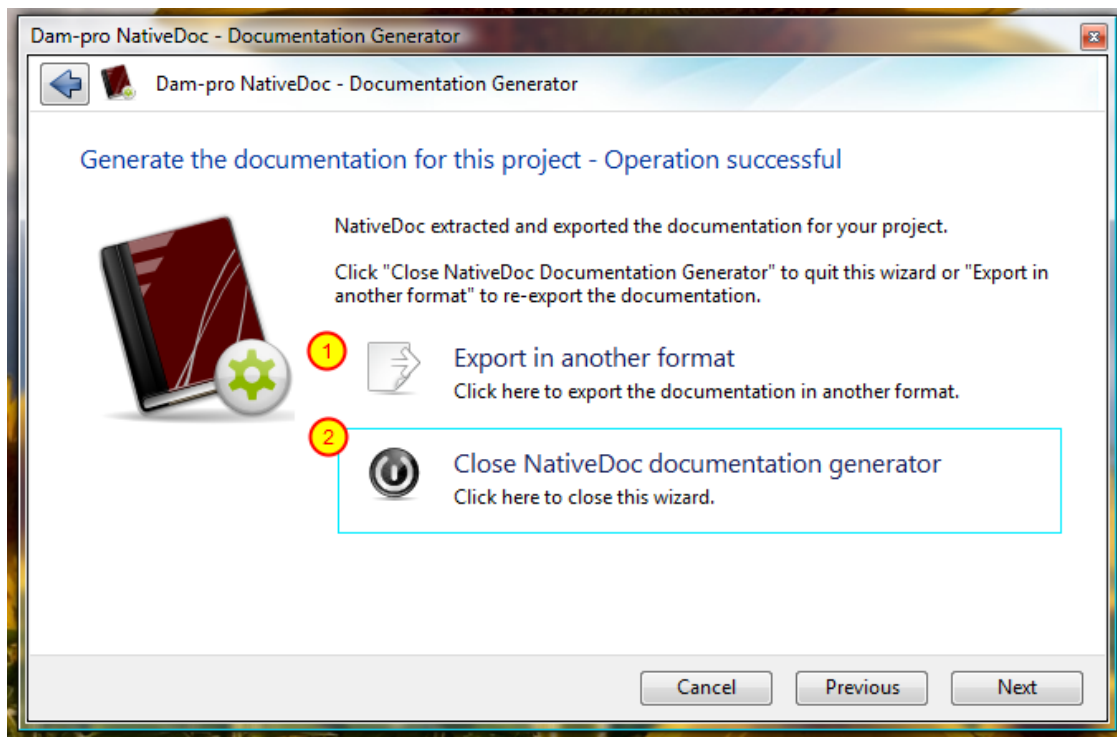
This screen display all errors/warning met by the NativeDoc documentation exporter. (1)

To solve an error, simply double click on an error/warning line, and your script editor will open and select the line, then you have to fix the problem.

**WARNING:** Oftenly, the givens line is not the line where exactly the error is, but the line of the documentation block or the line of the handler.

### Relaunch the generation

Once you have fixed errors/warnings, click "Previous" (2) and relaunch the export process.



NativeDoc has finished to generate the documentation.

To export the documentation in another format, click "Export in another format" (1). Otherwise, click "Close NativeDoc documentation generator" (2) to close the wizard.

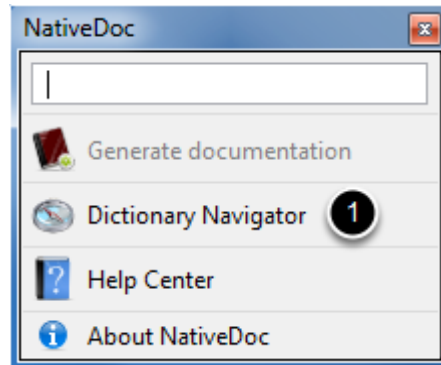
# NativeDoc 2 Documentation Navigator

## First contact with the Navigator

---

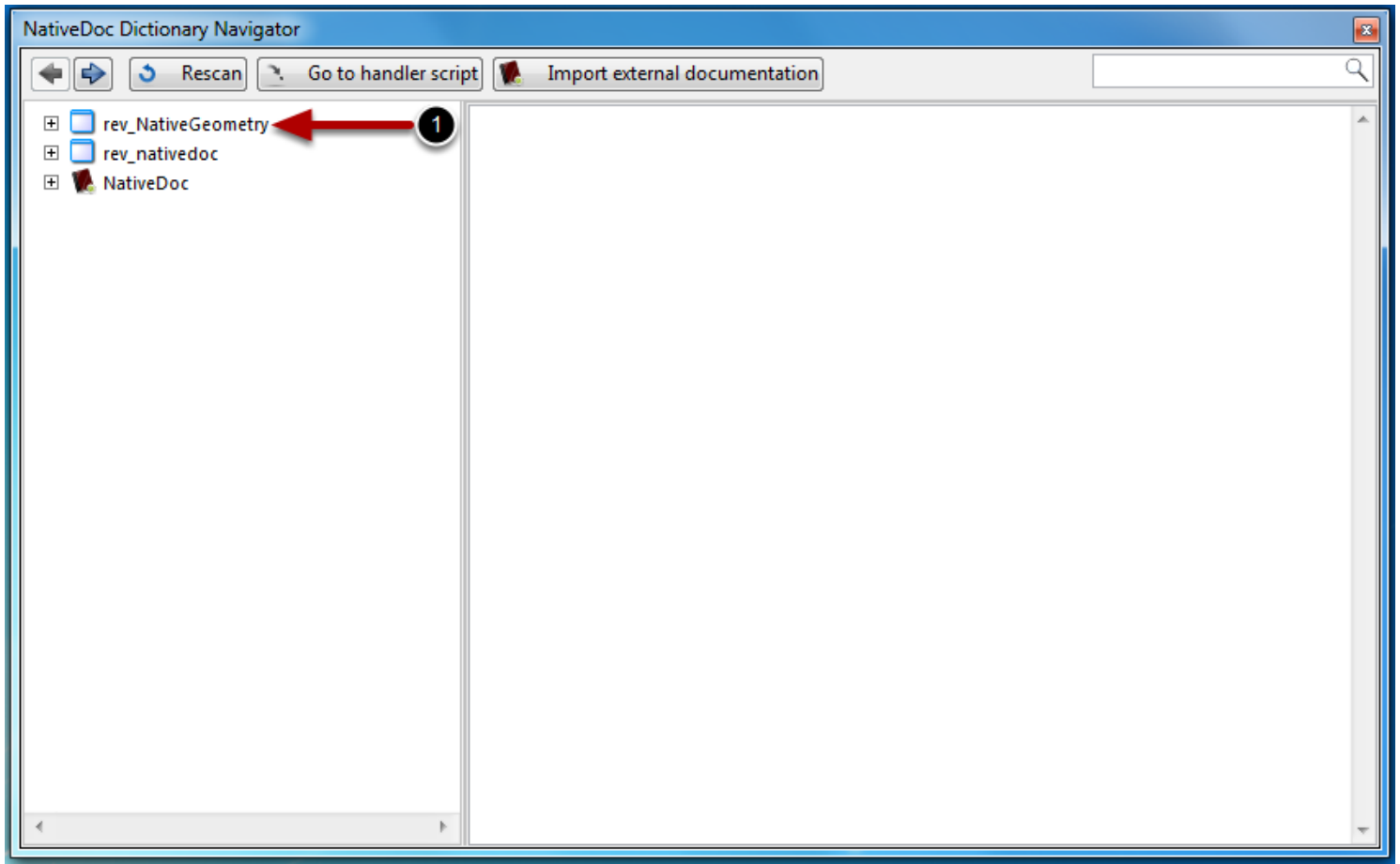
### Introduction to the NativeDoc Dictionary Navigator

#### Opening the Navigator



Simply click "Dictionary Navigator"

## The Navigator

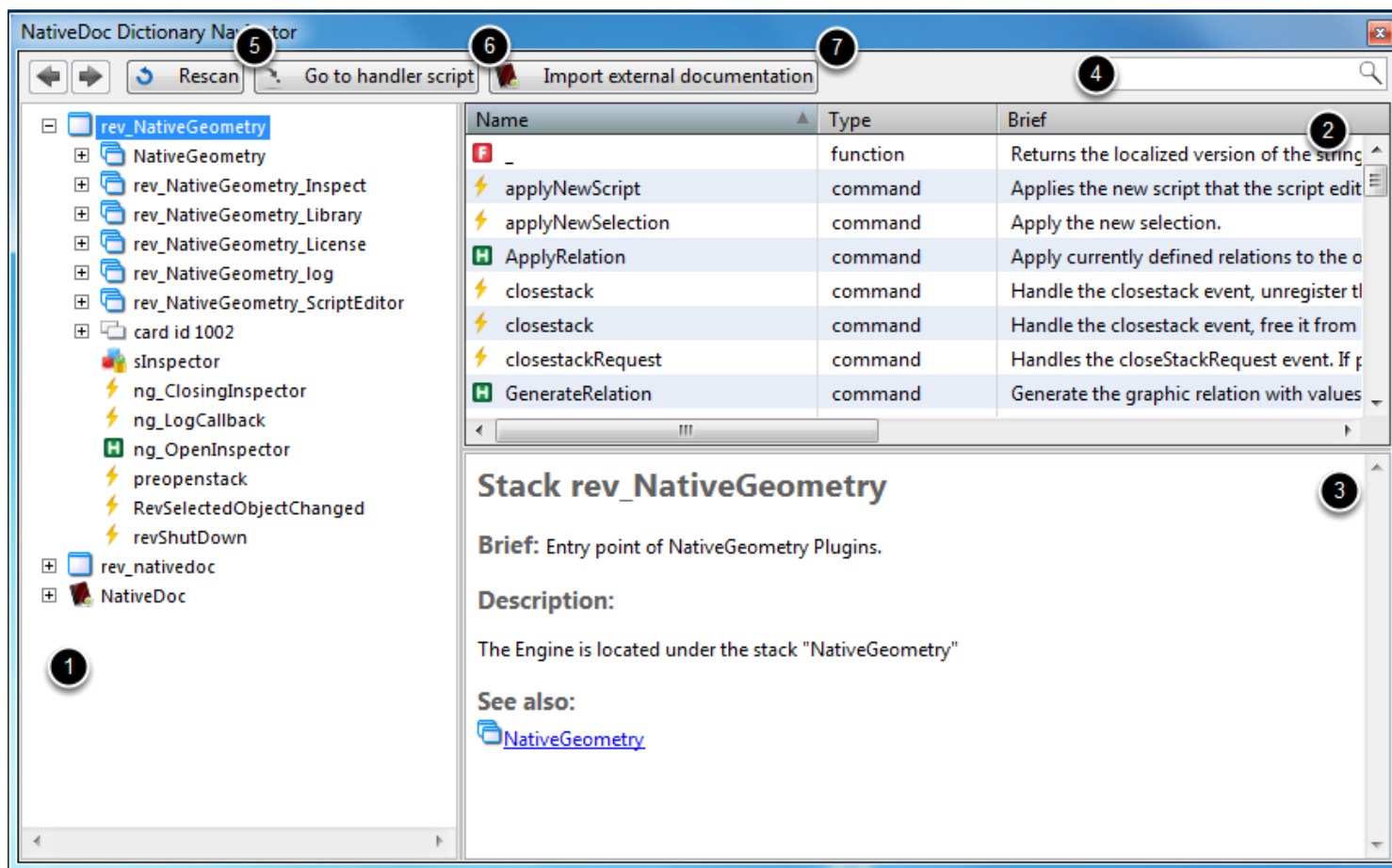


This is the window that you obtain when you first open the Dictionary Navigator.

This manual is based on a real LiveCode application: NativeGeometry, the must have geometry manager for LiveCode!

At the startup of the Navigator, nothing is displayed, click or double click on a stack in the tree to begin.





The screenshot shows the main window of the NativeDoc Dictionary Navigator.

Explanation of areas:

- 1 : Tree opened stacks, all documented handlers will appear here.
- 2 : List of all handlers/commands/functions etc... available in this object and sub objects. Really convenient to perform a search.
- 3 : The documentation of the selected element.
- 4 : The search bar.
- 5 : Rescan menu. Used to rescan the source code documentation.
- 6 : Go to handler script. Click to select the object or to open the script editor and select the handler.
- 7 : Used to import a NativeDoc XML Documentation.

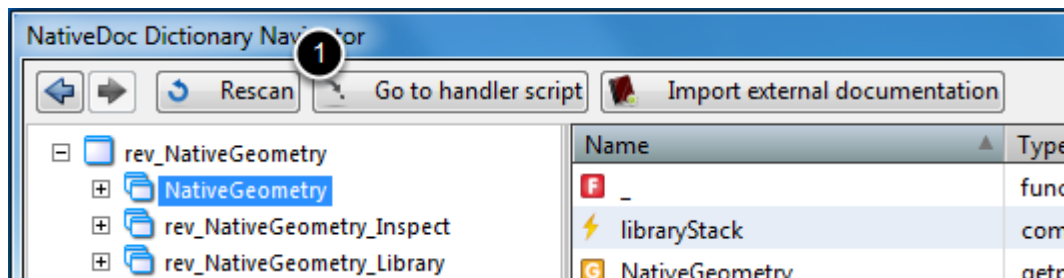
**Note:** NativeDoc displays by default only documented elements inside the Tree; it is possible to configure NativeDoc to display all elements in the menu "Rescan" (click "Rescan" button to open the menu).

**Note about the Tree:** Stacks displayed inside the tree are the ones displayed in the LiveCode application browser. So it depends on the value of "LiveCode UI Elements in Lists" setting.

## Refreshing the documentation

How to re-scan your sourcecode to update the Navigation.

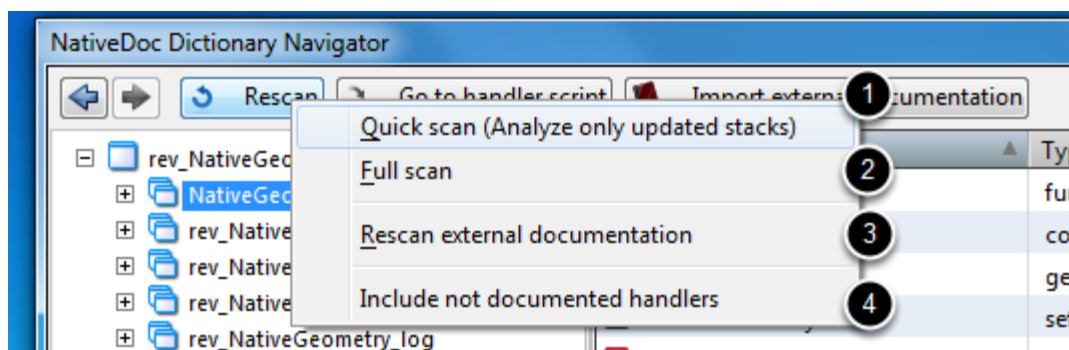
### The Rescan button



The most important button of the navigator is the Rescan button. (1)

It must be used in order to refresh the navigator documentation.

### The Rescan menu



Few scan operation are available, the most used one is "Quick scan". (1)

#### The Quick scan (1) :

The Quick scan operation will scan only updated stack file. If the quick scan operation does not work simply save your stack.

**Important:** The quick scan is based on the stack file modification date, this means that if changes are made and the stack is not saved, the quick scan will not re-scan the stack.

#### The Full scan (2) :

Rescan all stacks, either modified or not.

**Note:** If you encounter problems with the navigator, perform a full scan.

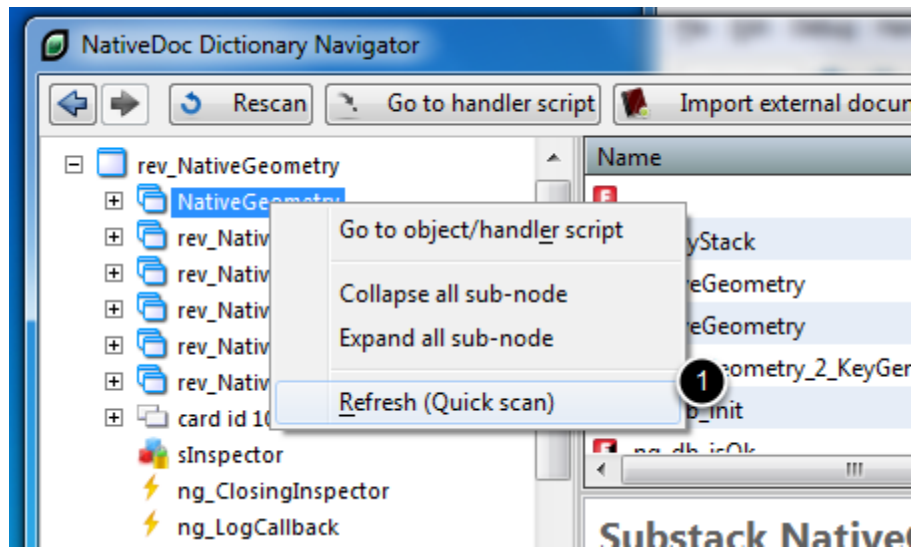
### Rescan external documentation (3) :

Rescan all external documentation.

### Include not documented handlers (4) :

Click to enable/disable the listing of all handlers inside the navigator.

#### Force the refresh of a stack



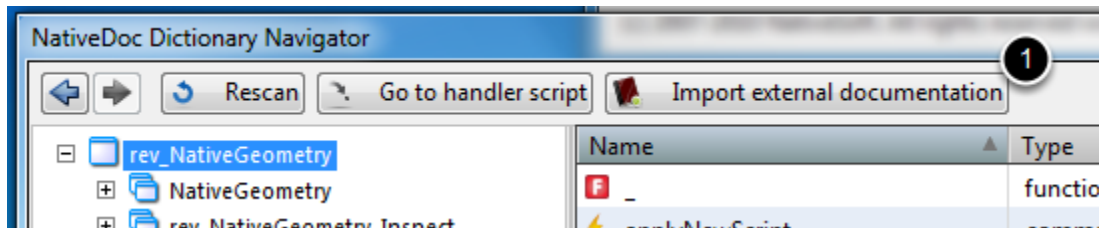
As mentioned previously in this documentation, the quick scan operation scan only saved stack, but you can force the scanning of a stack.

Right click an element in the tree and click "Refresh (Quick scan)" (1). This will do a quick scan operation but will force the selected stack to be rescanned.

## Add an external documentation

Add an external documentation inside the Navigator.

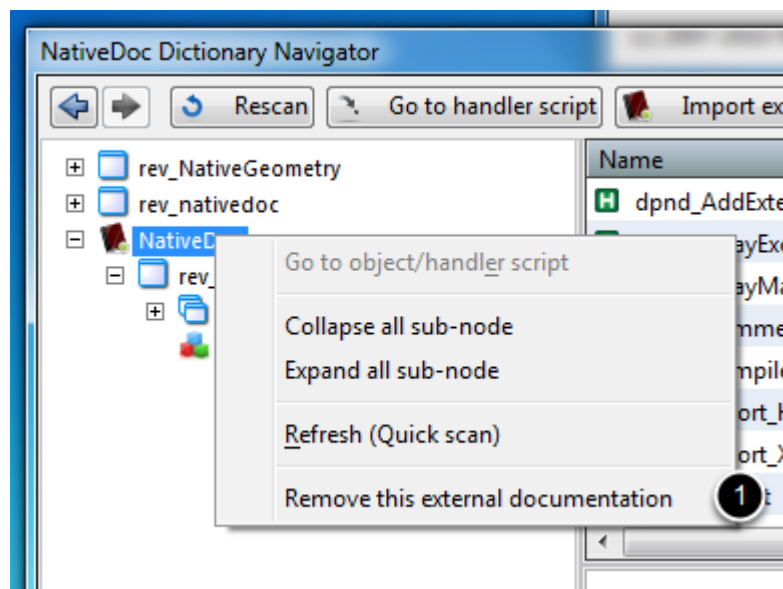
### Import manually an external documentation



Click "Import external documentation" then select the NativeDoc documentation XML file.

NativeDoc will import it automatically.

### Remove an external documentation



To remove an external documentation, right click on the external documentation in the tree then click "Remove this external documentation" (1).

### Import automatically an external documentation

NativeDoc can import automatically an external documentation at its startup. To do so read the help of the NativeDoc command "dpnd\_addExternalDocumentation".