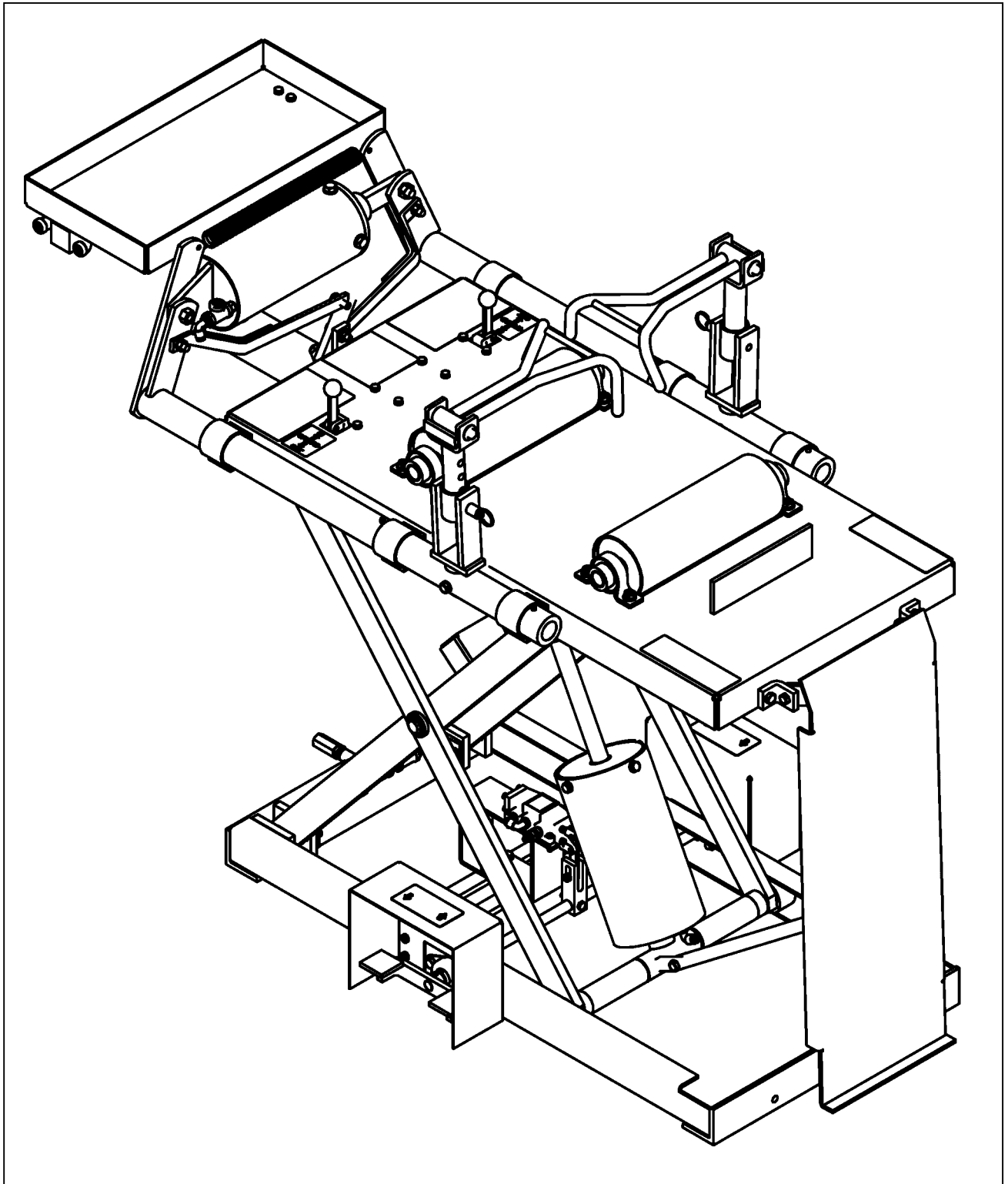


**Branick**<sup>®</sup>  
INDUSTRIES, Inc.

MODEL 5500  
Tire Repair  
Station

Installation, Operation  
and Repair Parts  
Information



## CAUTION

- ◆ Before using this product, read and fully understand the operating instructions and all decals on the product. This is necessary to prevent injury to the operator and damage to the product.
- ◆ Use this product only for lifting, spreading and repairing tire casings. Do not use this product for any other purpose.
- ◆ Keep fingers and hands clear of spread hooks during tire spread.
- ◆ Do not use this product if it is visibly worn, distorted or damaged.
- ◆ Always wear appropriate eye protection.

## WARNING

- ◆ Keep feet clear of the tire ramp and scissor arms when raising and lowering spreader platform.
- ◆ All personnel must be clear of the tire lift area during operation.

### ***INSTALLATION***

---

- 1) Attach the tire ramp (item 45) and retractor bar (item 46) to the Model 5500 with hardware provided. Tighten nylon lock nuts enough to allow free rotation at pivot points (see page 2)
- 2) Position the Model 5500 on a solid level floor leaving a minimum of 36 inches of clearance on operation sides and 24 inches of clearance on valve tray side.
- 3) Attach a 1/4 NPT quick coupler nipple (not provided) into the fitting located on lower frame on valve tray side of machine. Use 1/4 inch air hose with 100 p.s.i. minimum.

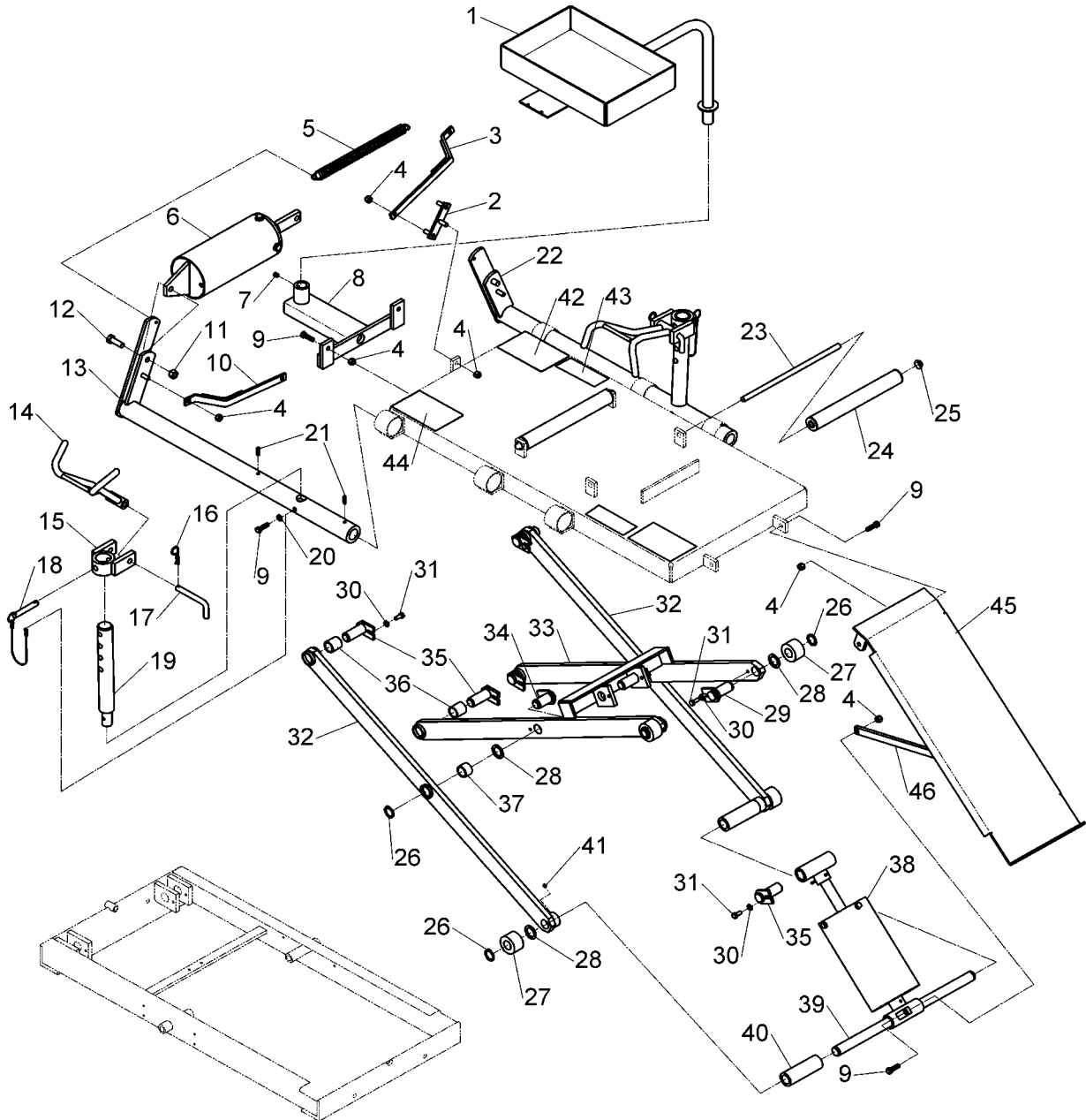
### ***OPERATION***

---

- 1) Make sure the spreader platform is in the lowest position.
- 2) Pull the spread hook arms out into the upright position.
- 3) Roll the tire up the ramp and onto the spreader platform rollers. Steady tire with hand and insert spread hooks between tire beads.
- 4) Raise the spreader platform to comfortable working height using the platform lift foot valve.
- 5) Adjust spread hooks to proper height for the tire size being repaired. The spread hook arms are held in position with a hitch pin. To adjust the spread hook arms, pull the hitch pin and move spread hook arm up or down to one of the four adjustment holes. Most larger truck tires will use the uppermost adjustment holes. Both spread hook arms must be adjusted to the same height.
- 6) Spread tire to desired width using the hand operated valve attached to accessory tray. If tire is lifted off tire rollers when it is spread, the spread hook arms are positioned too high and should be lowered.
- 7) After tire repairs are complete, lower the spreader platform to lowest position.
- 8) Remove spread hook arm pressure and remove spread hook arms from the tire bead.
- 9) Standing at the end of the ramp, pull the tire down the ramp using both hands.

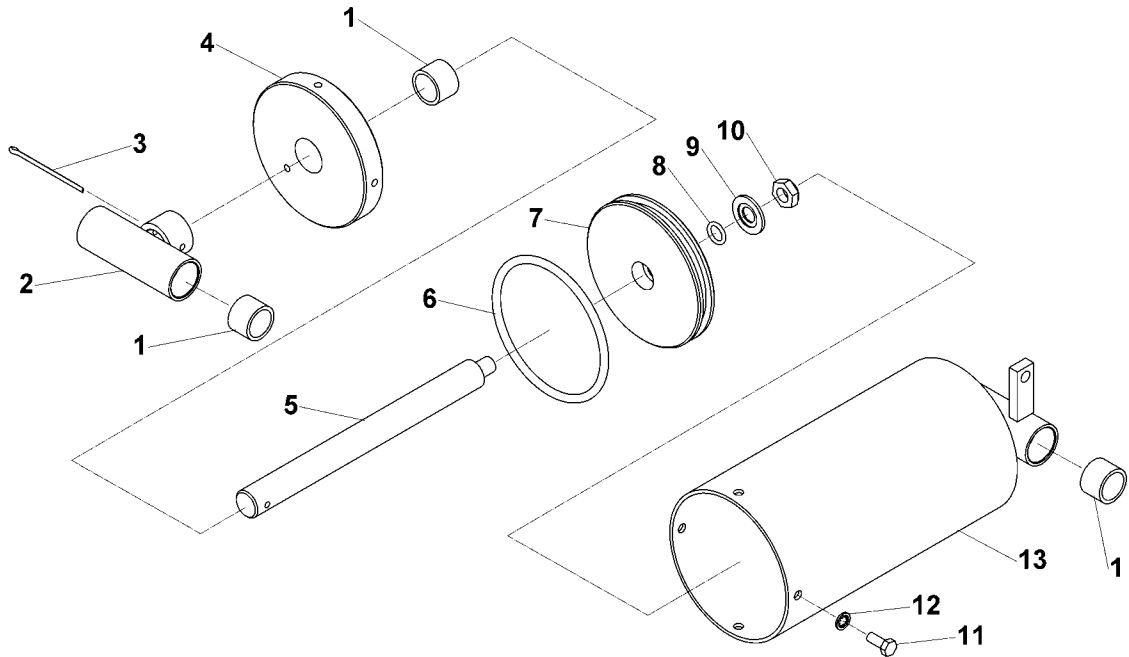
**MAINTENANCE**

**Monthly:** On the spread cylinder, remove the slotted plug from the tee fitting at the end of cylinder and put in a few ounces of 10 or 20 weight oil. On the lift cylinder, put few ounces of oil in the ¼ inch hole in top cover plate.



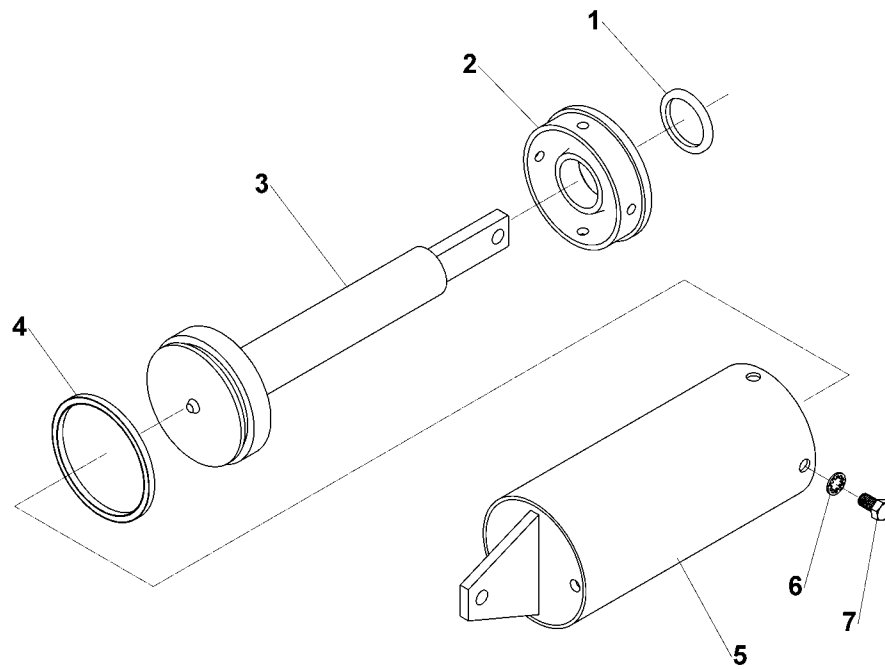
## MAIN ASSEMBLY

ITEM	PART NO	QTY	DESCRIPTION
1	03-0255	1	Tool Tray
2	950-199	1	Pivot Link
3	950-552	1	Link (Long)
4	055-154	11	3/8-16 Nylon Hex Lock Nut
5	110-011	1	Spring
6	900-187	1	Spread Cylinder
7	028-207	1	3/8-16 X 3/8 Cup Pt Nylon Tip Soc Set Screw
8	03-0250	1	Tool Tray Holder
9	028-046	8	3/8-16 X 1-1/4 Hex Head Cap Screw
10	950-553	1	Link (Short)
11	055-058	2	1/2-13 Prevailing Torque Hex Lock Nut
12	028-025	1	1/2-13 X 1-1/2 Hex Head Cap Screw
13	03-0248	1	Front Power Arm
14	03-0252	2	Spread Hook
15	03-0251	2	Hook Adjuster
16	061-224	2	1/2 Hair Cotter Pin
17	061-232	2	Pin
18	01-0114	2	Cable & Pin Assembly
19	73-0586	2	Spread Hook Rod
20	108-057	2	3/8 Internal Tooth Lock Washer
21	061-091	4	1/4 X 7/8 Spring Pin
22	03-0249	1	Rear Power Arm
23	73-0583	2	Tire Roller Rod
24	01-0184	2	Tire Roller Assembly
25	020-024	4	Press On Cap
26	044-048	6	1" Retaining Ring
27	11-0023	4	Roller
28	039-007	6	1" Machine Bushing
29	03-0108	2	Roller Rod
30	108-067	12	5/16 Internal Tooth Lock Washer
31	028-012	12	5/16-18 X 3/4 Hex Head Cap Screw
32	01-0182	2	Outside Arm Assembly
33	01-0183	1	Inside Arm Assembly
34	03-0107	2	Pivot Pin
35	03-0106	6	Pivot Pin
36	20-0015	4	Sleeve Bearing
37	039-041	2	Sleeve Bearing
38	01-0179	1	Lift Cylinder
39	73-0301	1	Lower Roller Rod
40	74-0076	2	Shaft Sleeve
41	028-027	2	1/4-20 X 1/2 Socket Set Screw
42	80-0128	2	Caution Decal
43	80-0129	2	Warning Decal
44	80-0127	1	Model 5500 Decal
45	03-0256	1	Tire Ramp
46	73-0592	1	Retractor Bar



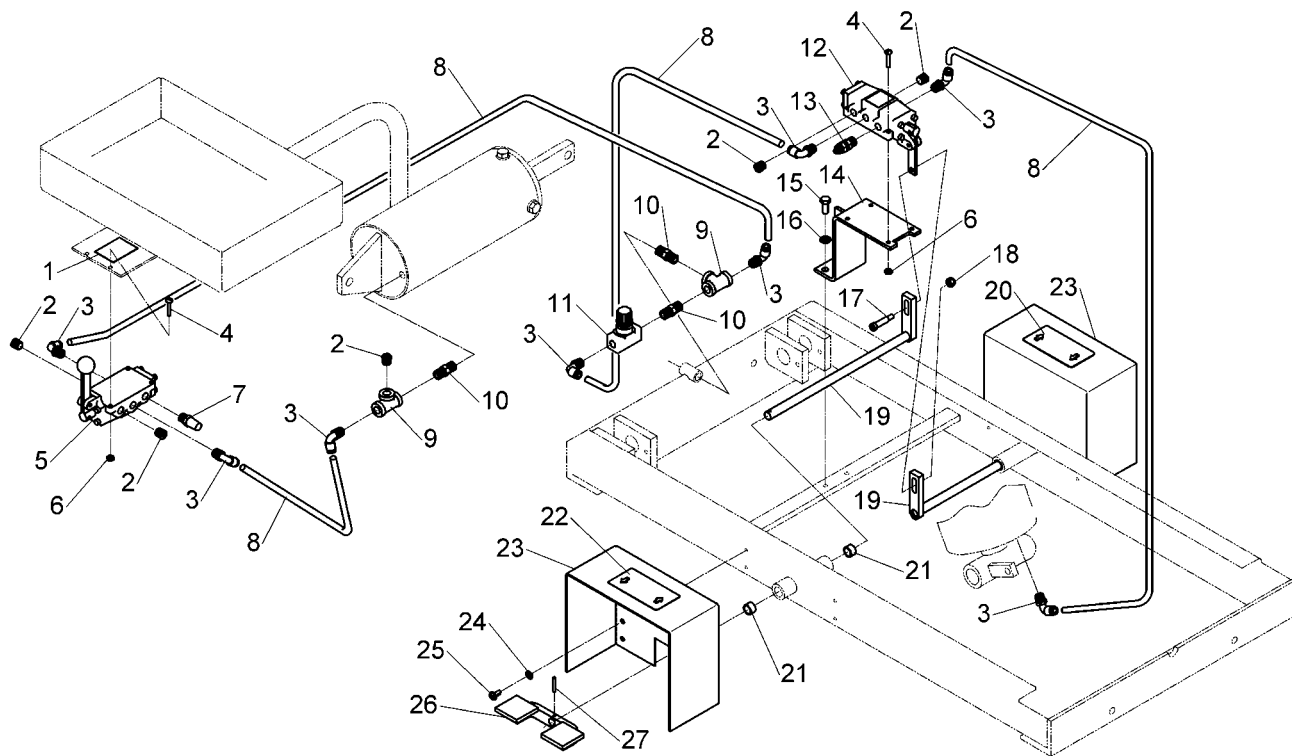
### LIFT CYLINDER ASSEMBLY

ITEM	PART NO	QTY	DESCRIPTION
1	039-041	5	Sleeve Bearing
2	01-0074	1	Rod End with Bearing
3	061-166	1	3/16 X 2-1/2 Cotter Pin
4	01-0181	1	Cover Plate with Bearing
5	73-0572	1	Piston Rod
6	61-0025	1	O-Ring
7	73-0573	1	Piston
8	041-049	1	O-Ring
9	52-0036	1	Wrought Washer
10	055-111	1	9/16-18 Nylon Hex Lock Nut
11	028-012	4	5/16-18 X 3/4 Hex Head Cap Screw
12	108-067	4	5/16 Internal Tooth Lock Washer
13	03-0240	1	Cylinder Tube



### SPREAD CYLINDER ASSEMBLY

ITEM	PART NO	QTY	DESCRIPTION
1	041-202	1	Rod Seal
2	098-327	1	Cover Plate
3	950-195	1	Piston Rod Assembly
4	041-204	1	V-Block Seal
5	950-194	1	Cylinder Tube
6	108-038	4	7/16 Internal Tooth Lock Washer
7	028-005	4	7/16-14 X 3/4 Hex Head Cap Screw



## PNEUMATICS ASSEMBLY

ITEM	PART NO	QTY	DESCRIPTION
1	026-633	1	Spread Decal
2	096-004	5	1/4 NPT Socket Head Plug Fitting
3	096-342	8	1/4 NPT X 1/4 Tube 90° Fitting
4	028-161	8	#10-24 X 1 Phillips Pan Head Machine Screw
5	190-066	1	Air Valve
6	055-057	8	#10-24 Hex Nut
7	885-035	1	Muffler
8	D20-007	As Req'd	1/4 OD Airline
9	096-249	2	1/4 NPT Tee Fitting
10	096-013	3	1/4 NPT X 1-1/2 Hex Nipple Fitting
11	190-249	1	1/4 NPT Flow Control
12	60-0047	1	Air Valve
13	885-036	1	Speed Control Muffler
14	03-0241	1	Valve Bracket
15	028-012	2	5/16-18 X 3/4 Hex Head Cap Screw
16	108-067	2	5/16 Internal Tooth Lock Washer
17	028-353	1	5/16 X 1 Shoulder Screw
18	055-160	1	1/4-20 Nylon Hex Lock Nut
19	03-0254	2	Valve Lever Arm
20	80-0126	1	Platform Lift Decal (Up/Down)
21	039-062	4	Sleeve Bearing
22	80-0053	1	Platform Lift Decal (Down/Up)
23	72-0086	2	Foot Pedal Guard
24	108-008	8	1/4 Internal Tooth Lock Washer
25	028-148	8	1/4-20 X 1/2 Phillips Pan Head Tapping Screw
26	03-0074	2	Valve Pedal
27	061-005	2	1/8 X 1 Spring Pin

---

## COMMERCIAL WARRANTY

This product is warranted by BRANICK INDUSTRIES, INC. to the original user-owner against defective materials or workmanship for a period of one year from the date of delivery. During the warranty period, product found to be defective will be repaired or replaced at, BRANICK INDUSTRIES, INC.'s option, without charge. The product must be returned, with prior approval, transportation charges prepaid and with proof of original delivery date, to BRANICK INDUSTRIES, INC., 4245 Main Ave., Fargo, North Dakota 58107. The repaired or replacement product will be returned with transportation charges prepaid by Branick.

This warranty does not cover defects in the product caused by ordinary wear and tear, abuse, misuse, overloading, accident (including shipping damage), improper maintenance, alteration, or any other cause not the result of defective materials or workmanship.

REPAIR OR REPLACEMENT IS THE EXCLUSIVE REMEDY FOR DEFECTIVE PRODUCT UNDER THIS WARRANTY. THIS WARRANTY IS EXPRESSLY IN LIEU OF ALL OTHER WARRANTIES, INCLUDING ANY IMPLIED WARRANTY OF MERCHANTABILITY OR ANY IMPLIED WARRANTY OF FITNESS FOR A PARTICULAR PURPOSE OF THIS PRODUCT. BRANICK INDUSTRIES, INC. SHALL NOT BE LIABLE FOR ANY CONSEQUENTIAL OR INCIDENTAL DAMAGES.

*BRANICK INDUSTRIES, INC. reserves the right to make changes in the design or construction of our products without obligation to incorporate such changes in products already sold and without notice.*

Service parts, warranty, and regular repair service for products are available from Branick authorized distributors or from:

BRANICK INDUSTRIES, INC.  
4245 Main Ave.  
Box 1937  
Fargo, North Dakota 58107  
701/281-8888

---

***Branick***®  
**INDUSTRIES, Inc.**