

# Component Video & Stereo Audio, Digital CAT5 Receiver Built in RGB Skew Corrector

ITEM NO.: YE02DALS

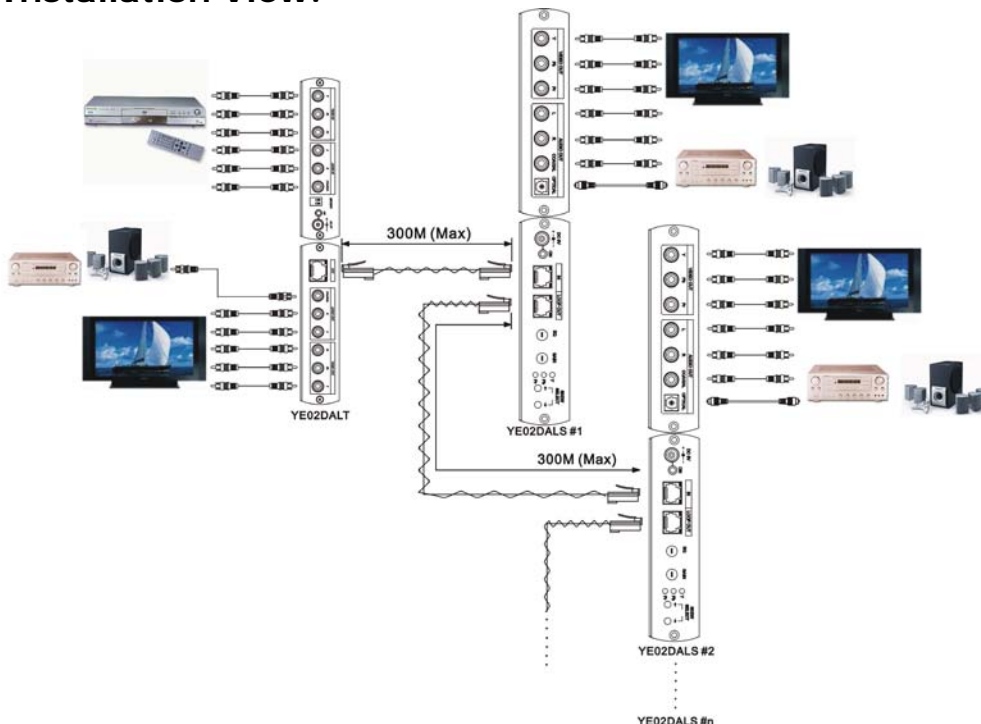


YE02DALS is a CAT5 receiver and special designed for long range transmission over cost effective CAT5 cable to instead of Component and Audio cable and workable for all our CAT5 VGA transmitters. It's built in RGB skew adjustment for the optimum video performance under long cable run.

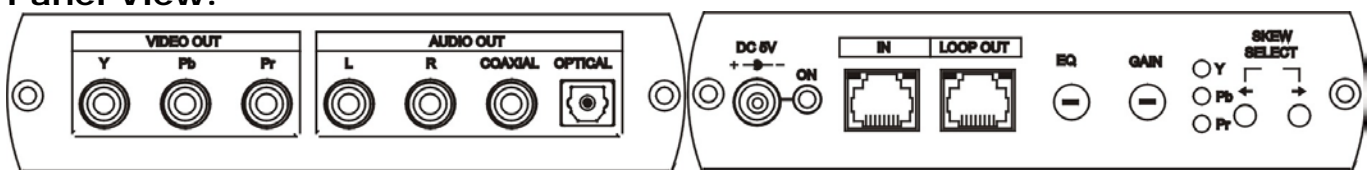
## YE02DALS Component Video & Stereo/Digital Audio CAT5 Receiver– Built in Skew Corrector

- Work with YE02DALT CAT5 VGA transmitter as a high quality receiver.
- Built in RGB skew adjustment for the optimum video performance under long cable run.
- It could be daisy chained for another YE02DALS to extended working range over 300 meters and multiple displays.
- Support analog stereo audio and digital audio.
- Digital transmission on analog stereo audio for sound undistorted. (Dolby Digital, AC3, DTS passed through)
- Supports hi resolution up to 1080p.
- Long range transmission up to 300 meters (Max.)
- Built in LPCM 44.1K / 48K 16Bit stereo audio decode function, digital & analog audio could be output simultaneously.
- Support Dolby Digital (AC3) & DTS digital output. (pass through).

## Installation View:



## Panel View:



### Adjustment:

**EQ :** Cable length EQ adjustment for picture sharpness, clockwise turning to enhance signal, counter-clockwise to lower signal.

**Gain:** Video signal gain adjustment for picture brightness, clockwise turning to enhance signal, counter-clockwise to lower signal.

**Skew Select**  $\leftarrow \rightarrow$  : Press  $\leftarrow \rightarrow$  2 buttons together to start the Skew adjustment mode.

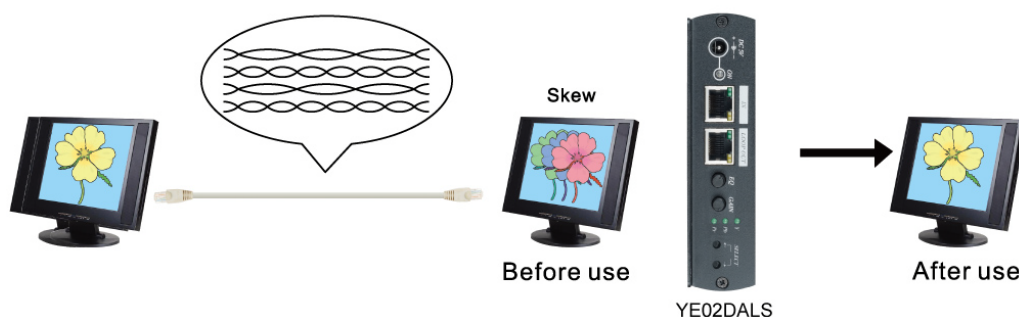
Under skew adjustment mode: Press  $\leftarrow \rightarrow$  2 buttons together again to switch the color (RGB) you want to adjust.

**Skew Select**  $\leftarrow$  : reduce delay time (color move to left side)

**Skew Select**  $\rightarrow$  : increase delay time (color move to right side)

### Note:

1. EQ adjustment over strong or over weak will cause picture not stable or no picture display, recommend EQ turn to right end, then slightly turn to left for the best picture.
2. Under Skew adjustment mode without any setting in 30 seconds, it will be auto off skew adjustment mode.
3. EQ, Gain, Skew adjustment also influence the picture quality of Loop Out.



### LED Indication:

**Blue LED:** Power on/off

**Vertical 3 x LED:** Under skew adjustment mode, to indicate the color you adjust  
Y = Luminance, Pb = Luminance - Blue, Pr = Luminance - Red.

**Link Cable Connector:**

**Green LED:** Audio signal lock (LED on)

### Caution:

1. The cabling must away from any equipment with electromagnetic wave, i.e.: microwave, radio equipment, high voltage lines.
2. Shorter cable may occur no picture display, recommend the cable length at least 20 meters.

### Specification:

ITEM NO.	YE02DALS
Resolution	480i, 480p, 576i, 576p, 720p, 1080i, 1080p
Video Bandwidth	122Mhz (-3dB)
Audio Bandwidth	20-20KHz (-3dB)
Video Output	RCA x 3 : Y ( $75\Omega$ , 1.0 Vp-p), Pb Pr ( $75\Omega$ , 0.7 Vp-p)
Audio Output	Analog audio output: RCA x 2 ( $10K\Omega$ ), 3 Vp-p (Max) Digital Audio output: Coaxial RCA x 1 ( $75\Omega$ ), Optical x 1
Skew adjustment	0 – 62ns ( 2ns Step ), skew button x 2
Link Connector	RJ45 x 1
Loop output Connector	RJ45 x 1
Max Distance	Up to 300M (1000 feet)
Power Supply	5V DC 2000mA
Power Consumption	1000mA (Max)
Dimensions (mm)	125 x 95 x 30
Weight (g)	280