

# EXGARDE SIMONSSVOSS INTEGRATION

## User Guide

UM0085.GB Issue 3 23/07/2015

[www.tdsi.co.uk](http://www.tdsi.co.uk)

TDSi  
Unit 10 Concept Park  
Innovation Close  
Poole  
Dorset  
BH12 4QT, UK

Tel: +44 (0) 1202 723535  
Fax: +44 (0) 1202 724975

Sales Enquiries:	<a href="mailto:sales@tdsi.co.uk">sales@tdsi.co.uk</a>
Marketing Support:	<a href="mailto:marketing@tdsi.co.uk">marketing@tdsi.co.uk</a>
Technical Support:	<a href="mailto:support@tdsi.co.uk">support@tdsi.co.uk</a>

## Foreword

Copy right © 2015 TDSi. All rights reserved.

Time and Data Systems International Ltd operate a policy of continuous improvement and reserves the right to change specifications, colours or prices of any of its products without prior notice.

## Guarantee

For terms of guarantee, please contact your supplier.

## Trademarks

Copyright © 2015 Time and Data Systems International Ltd (TDSi). This document or any software supplied with it may not be used for any purpose other than that for which it is supplied nor shall any part of it be reproduced without the prior written consent of TDSi.

Microsoft and Windows are registered trademarks of Microsoft Corporation.

All other brands and product names are trademarks or registered trademarks of their respective owners.

## Cautions and Notes

The following symbols are used in this guide:



**CAUTION!** This indicates an important operating instruction that should be followed to avoid any potential damage to hardware or property, loss of data, or personal injury.



**NOTE.** This indicates important information to help you make the best use of this product.

# Contents

1.	Overview .....	1
2.	Getting Started .....	2
3.	IP Lock Service Manager .....	3
4.	Firewall Configurations .....	5
5.	Configuring EXgarde .....	10
6.	Configuring Doors.....	12
7.	White List .....	13
8.	Office Mode .....	16



# 1. Overview

---

EXgarde provides the ability to integrate with Simon Voss IP locks by connecting to the SimonsVoss Wave Net Radio network. The EXgarde interaction includes controlling and monitoring locks and because EXgarde connects to the Wave net hub, with each hub handling 16 locks, the only limitations to this service is hardware capability and the IP lock license.

## 2. Getting Started

Before EXgarde can integrate with SimonsVoss IP locks, you will need to ensure the SimonsVoss locks and hubs have been installed and set up correctly prior to setup in EXgarde. Please refer to the SimonsVoss Installation Guide for further information. The IP Lock Service manager will also need to be installed prior to configuring the IP locks.

The following information will need to be obtained from the SimonsVoss application.

- ✔ Unit Number - This will be the last 3 digits of the GN device address
- ✔ Door Number - This will be the last 3 digits of the LN device address
- ✔ Connection details - This will be the IP address for the Hub
- ✔ PHI String - This is the door locks unique ID. It can also be found etched on to the lock body

	node type;	device address;	wn address;	connection details;	chipID;	nick name;	phi;	phi string
GN = ACU	GN_ER;	0x00000100	0x0006;	192.168.102.234	0001206A;	;	;	
LN = LOCK	LN_I_MP	0x00000200	0x00026;	192.168.102.234	00016E64;	8520266;	00DSG4M	
	LN_I_MP	0x00000300	0x00027;	192.168.102.234	00019029;	8516878;	00DRXA6	
	LN_I_MP	0x00000400	0x00028;	192.168.102.234	0001902C;	8530052;	00DSM38	
	LN_I_MP	0x00000A00	0x0002A;	192.168.102.234	0001902B;	8533148;	00DSG4S	
	LN_I_MP	0x00000B00	0x0002B;	192.168.102.234	0001902D;	8530108;	00DSG6M	

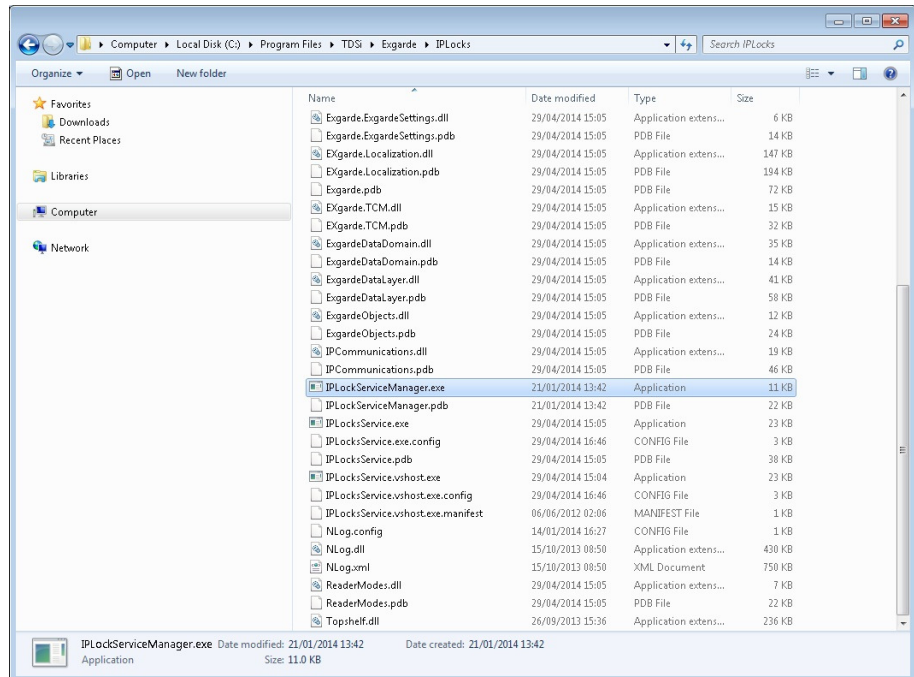
Used for the Unit number and Door Number

Required for ACU IP Comms details

Required for the PHI String details

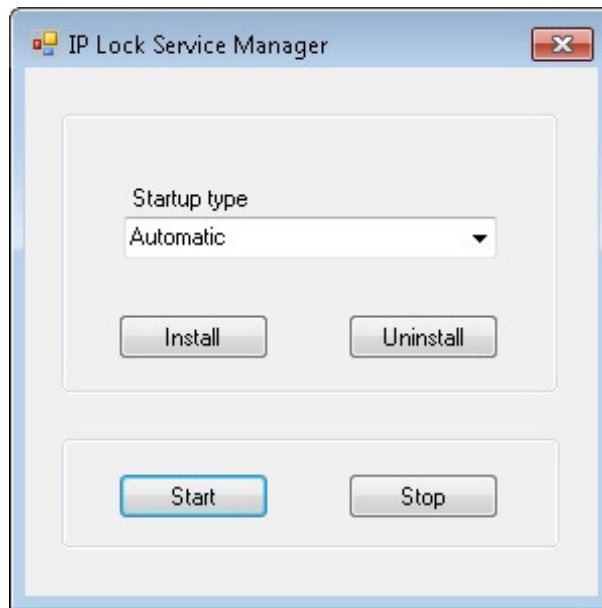
# 3. IP Lock Service Manager

To enable communications between EXgarde and the IP Locks communication hub, the IP Lock Service must be running. The Service Manager can be used to configure the IP Locks Service. This can be found in C:\Program Files\TDSi\Exgarde\IPLocks\IPLockServiceManager.exe.

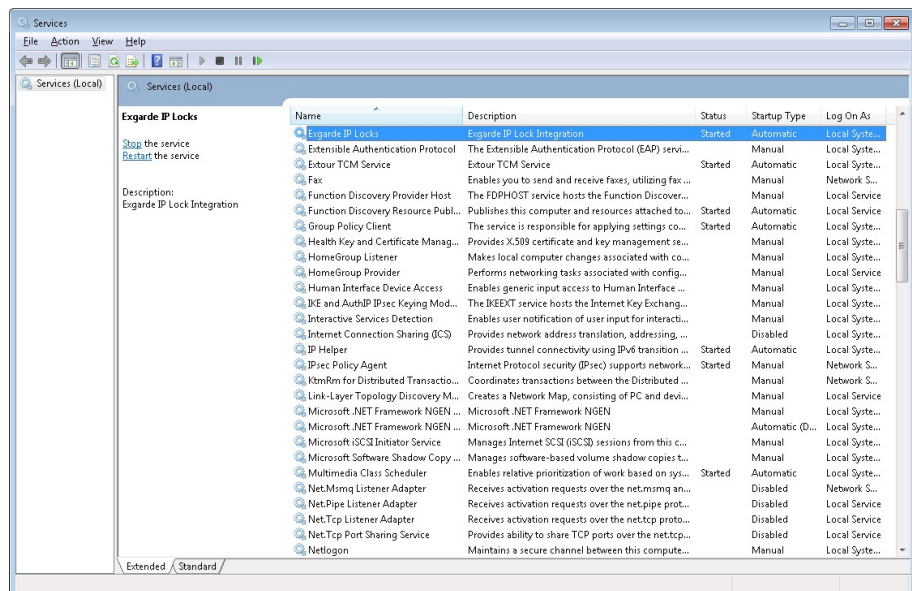


The Lock Service Manager can be used to control/configure the IP Lock Service; the start/stop buttons can be used to start or stop the service. When you first run EXgarde, the IPLocksService will be set to run in manual mode by default. This can be changed to run in Automatic mode by right clicking on the shortcut you have just created and selecting Run as administrator, click yes on the next screen to accept running as Administrator.

The IP Lock Service Manager will open and 'Start-up type' will default to Manual. To enable Automatic start-up of the service, click Stop then Uninstall, then select Automatic from the drop down list and click Install, next click on Start. From now on every time the PC running EXgarde is started the IP Service will start.



To check if the service is running and has been changed to automatic start, go to Services and the IP Locks Service Manager status and Start up Type should be the same as shown in the screenshot below. Status should be started and Startup Type should be Automatic

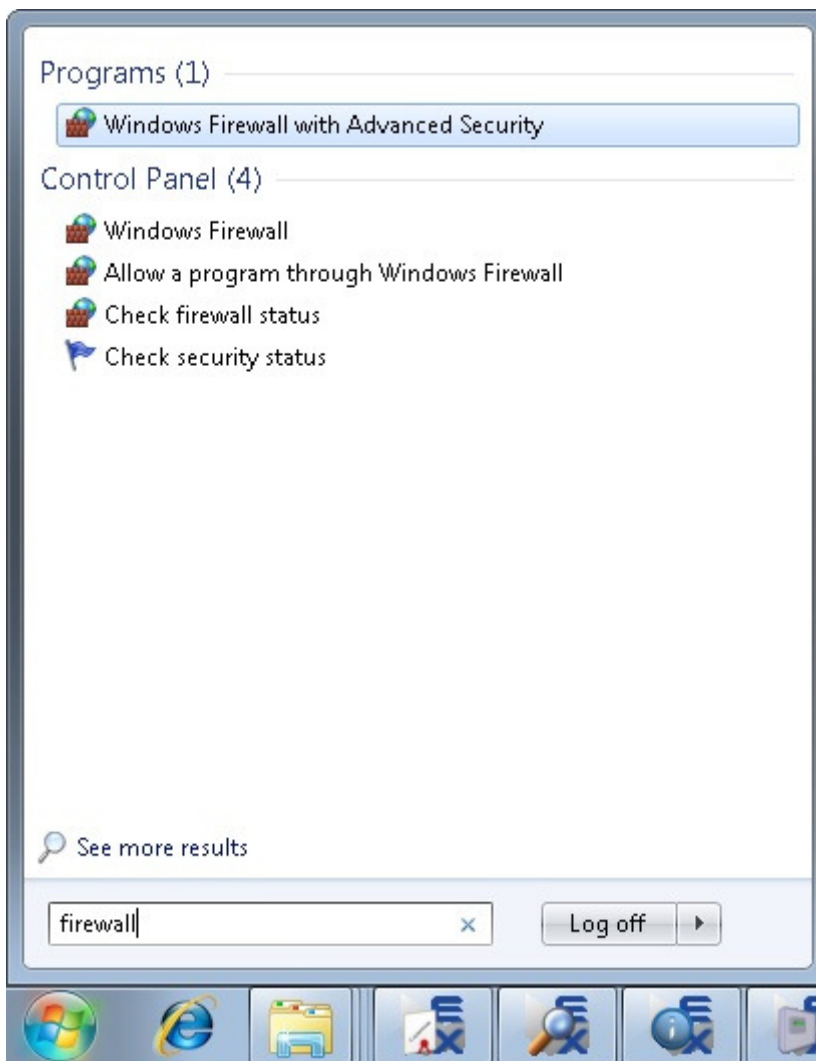




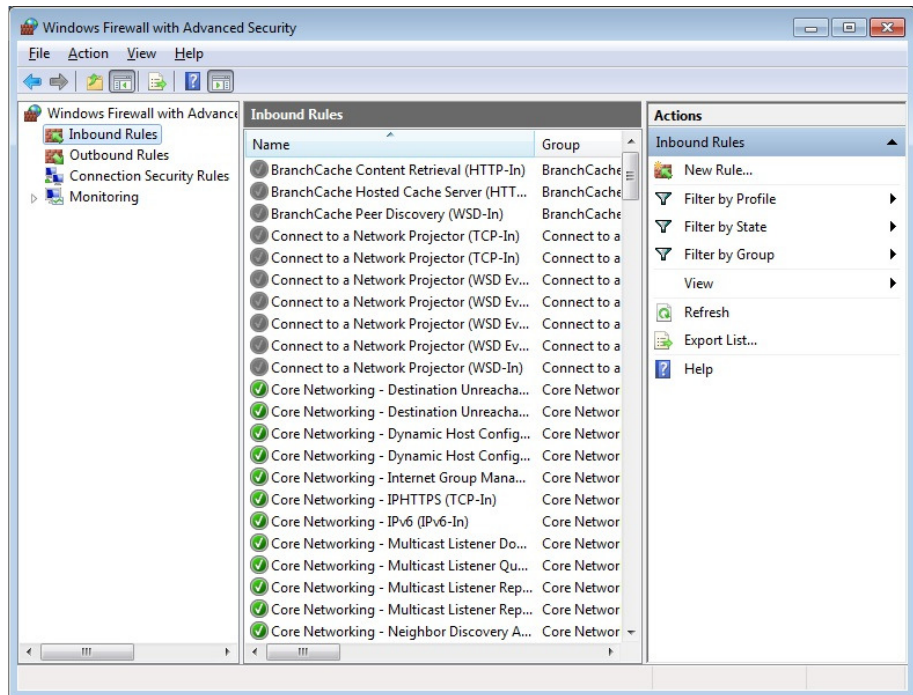
## 4. Firewall Configurations

The default IP ports on the PC EXgarde has been installed on will be blocked by Windows Firewall. The following steps need to be carried out for both inbound and outbound rules

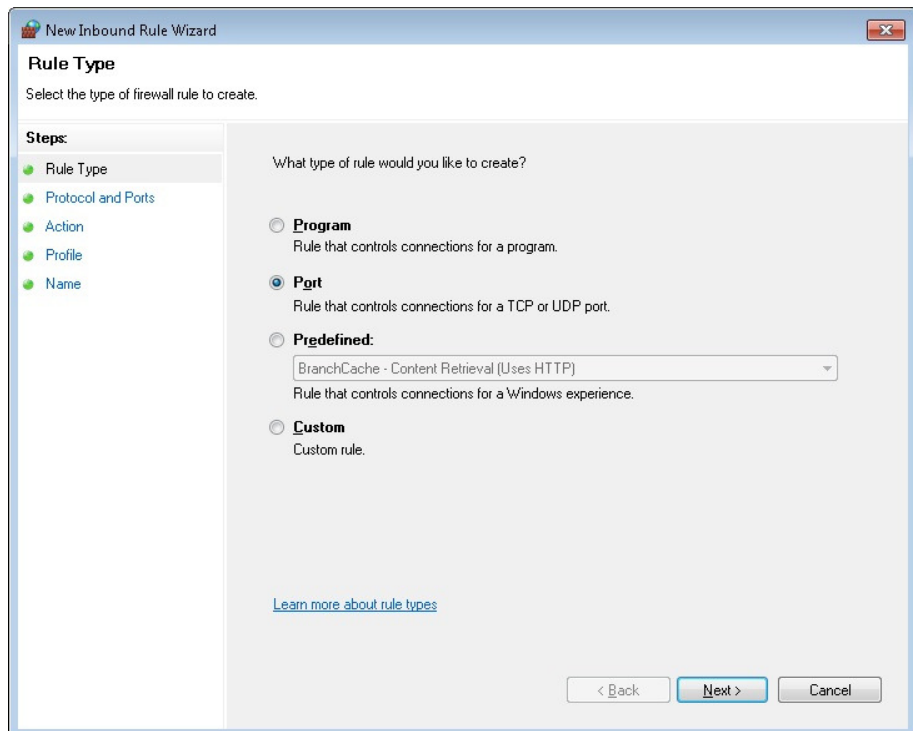
Search and open Windows Firewall with Advanced Security



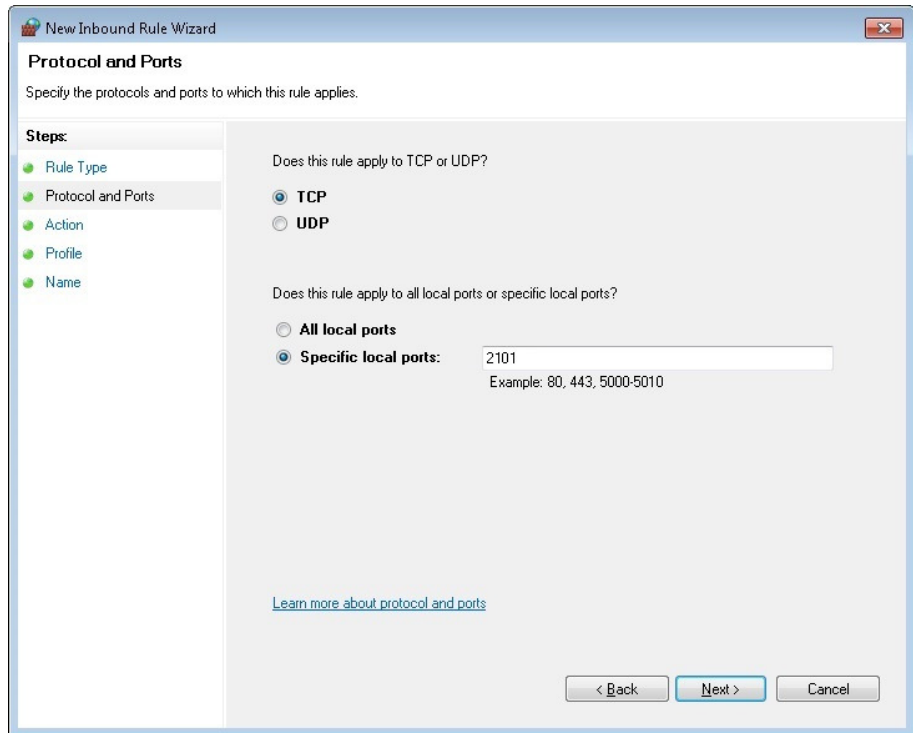
Select Inbound Rules from the left window and then select New Rule in the Actions window on the right to start the wizard



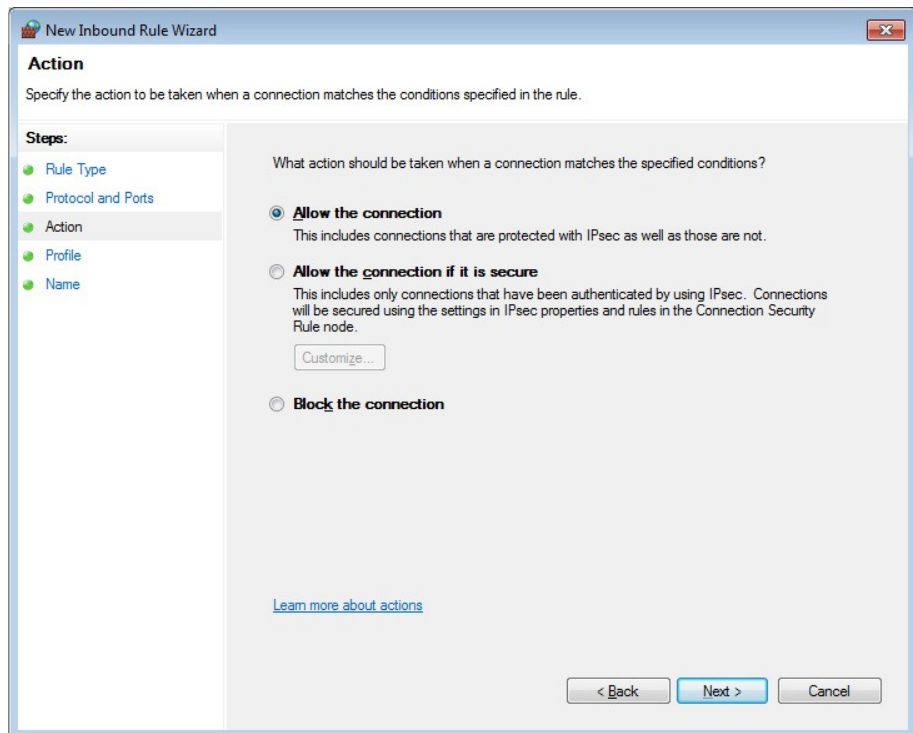
When the Rule Type window opens, select Port and click next



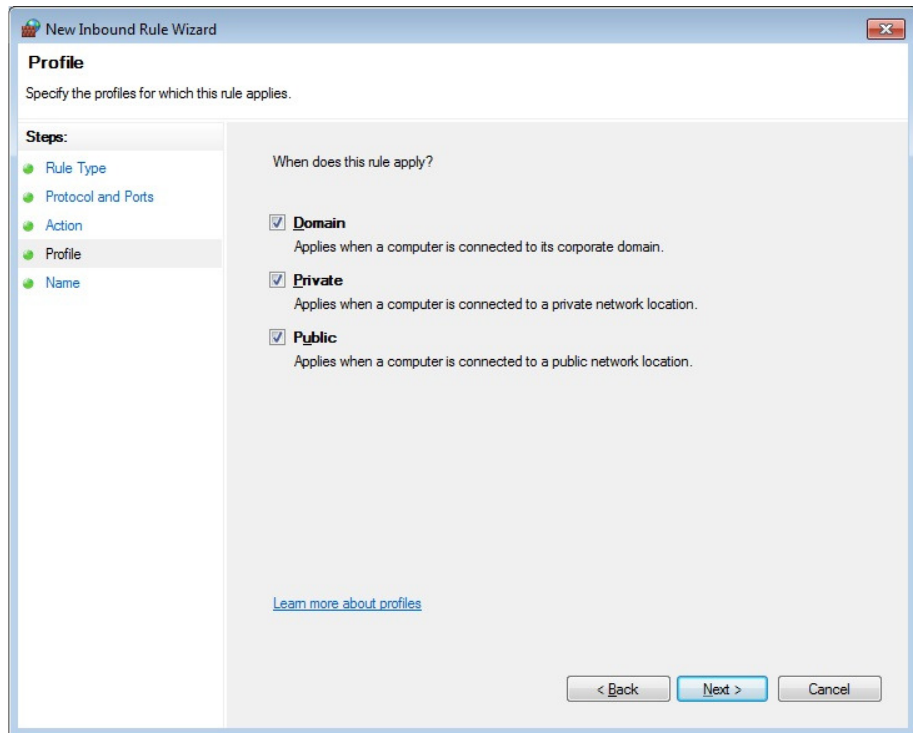
From the Protocol and Ports window, select TCP and in Specific local port enter 2101 or specified IP port if changed from default then select next



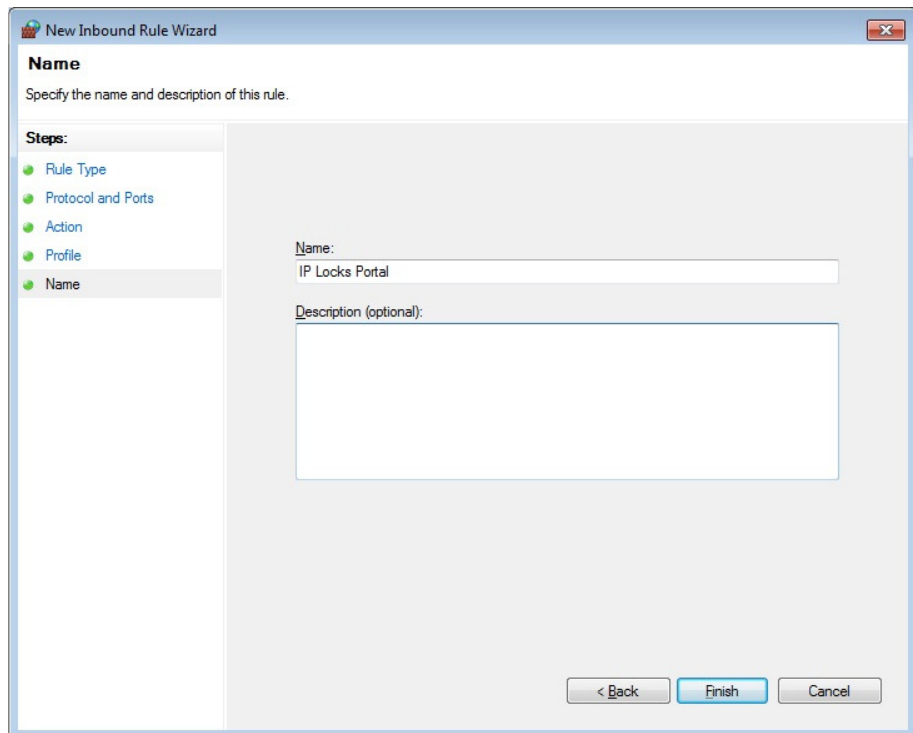
Select Allow the connection from the Actions window and click next



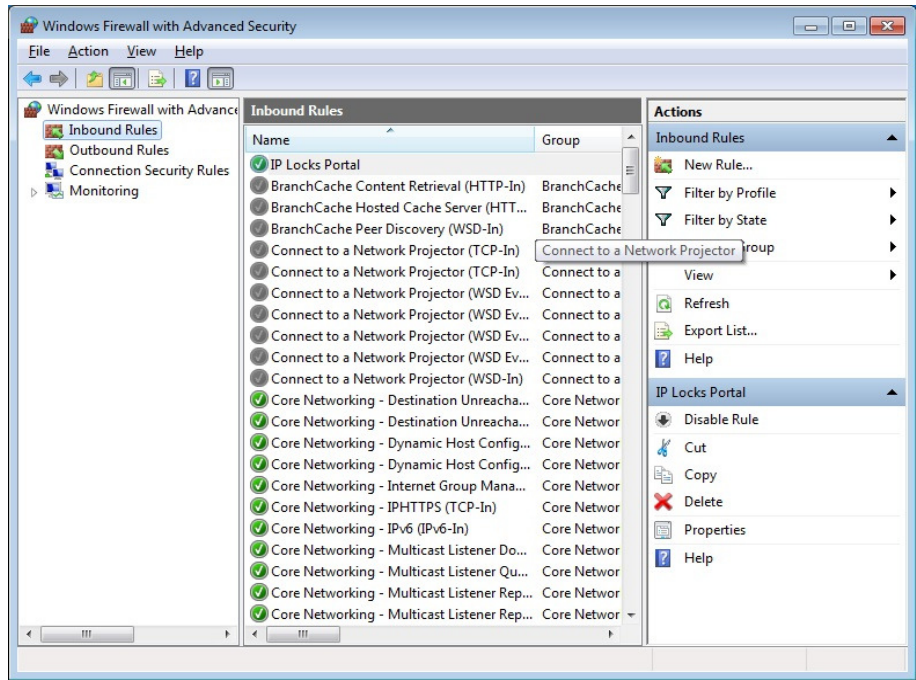
If you are unsure which of the Profiles need to be selected in the Profile window contact your IT support.



Finally, enter the name for the new rule and description if you desire and click Finish to complete the wizard.

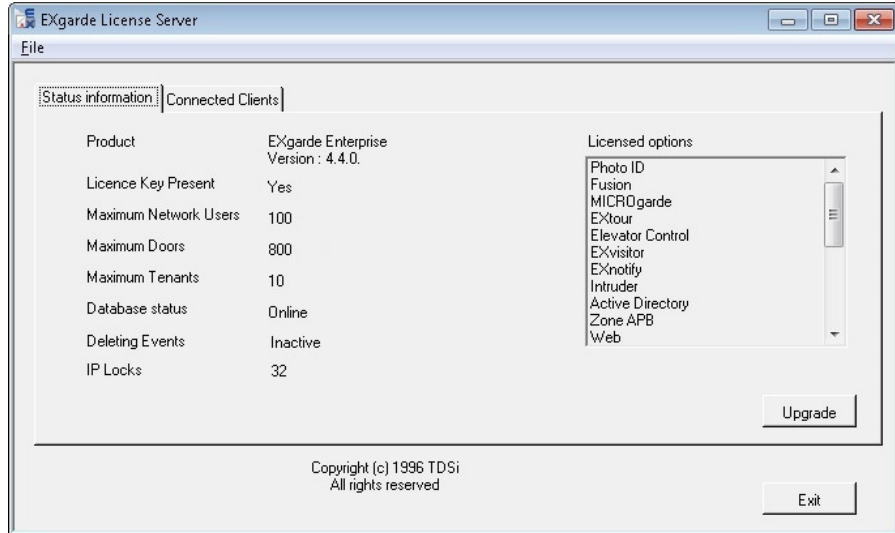


You can check the new Inbound rule by re-opening the Windows Firewall and Advanced Security window.



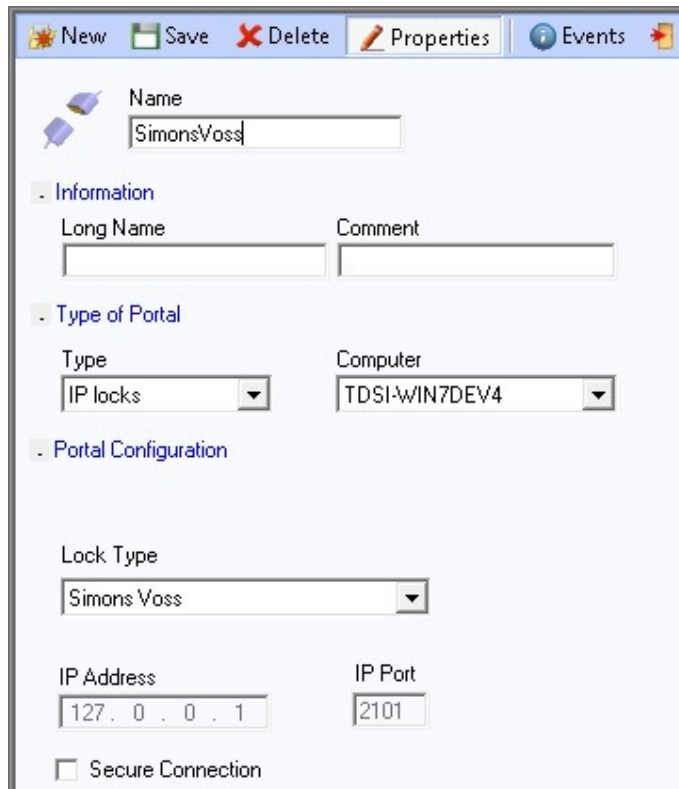
# 5. Configuring EXgarde

To ensure the IP locks will work correctly, check the license server has been upgraded

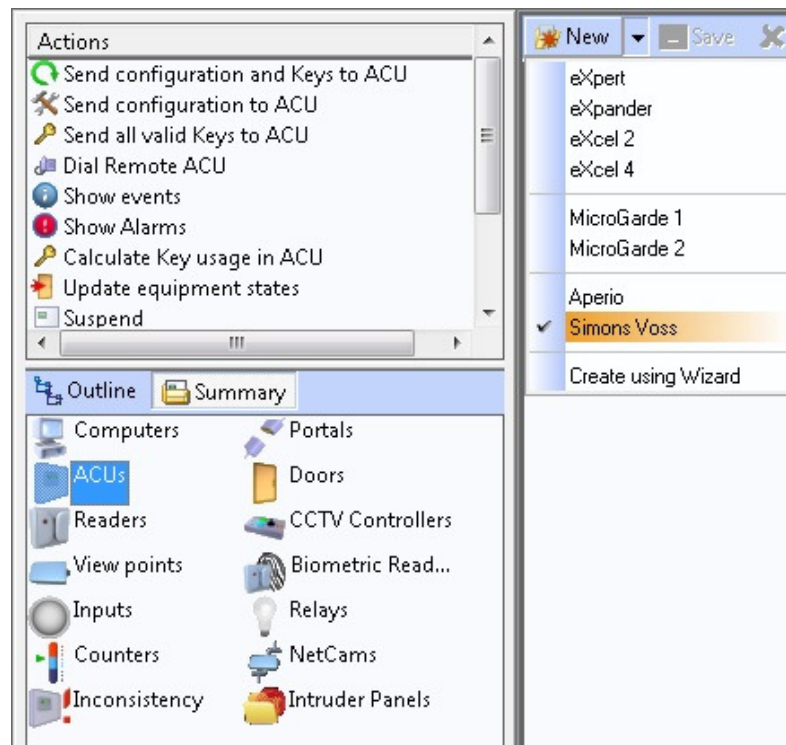


Open EXgarde and create a new portal for the IP locks. Rename the portal and change the Type to IP locks. Then select SimonsVoss from the Lock Type menu. The default IP port is set to 2101.

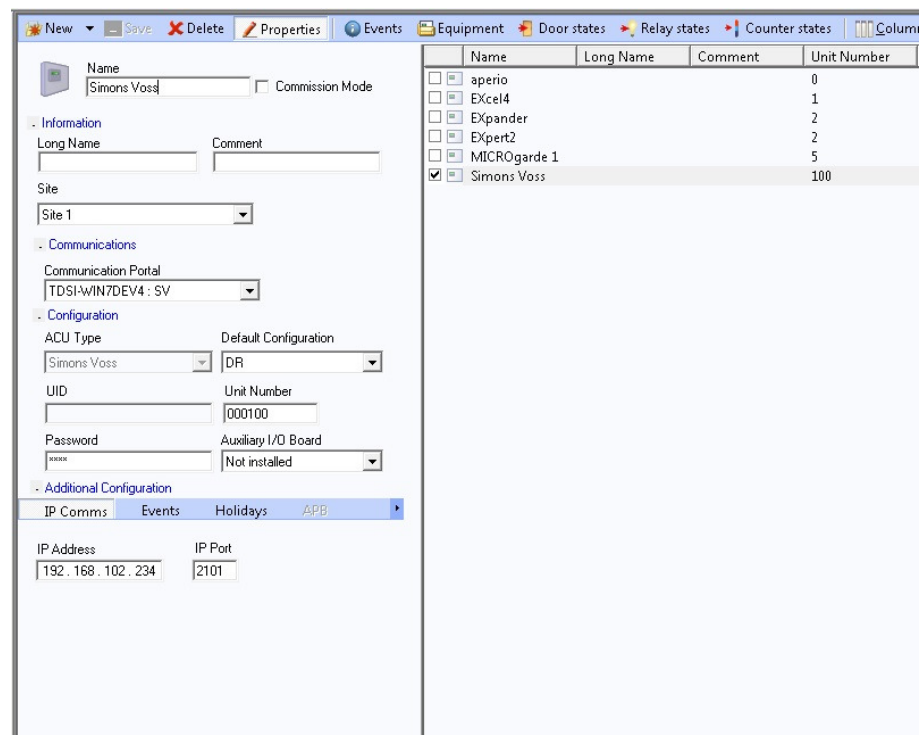
***N.B. IP port 2101 may be blocked by Windows firewall, if this is the case you will have to create a new inbound rule this is covered in Firewall Config***



Next you will need to create the ACU which represents the Hub. In Summary view click on <ACU> and click the drop down list on the New tab and choose SimonsVoss.



When adding the new ACU you will need to specify the Unit number and IP address. Please see your SimonsVoss software to obtain this information.



ACU Type will be greyed out and show as SimonsVoss. Click save when you have finished.

## 6. Configuring Doors

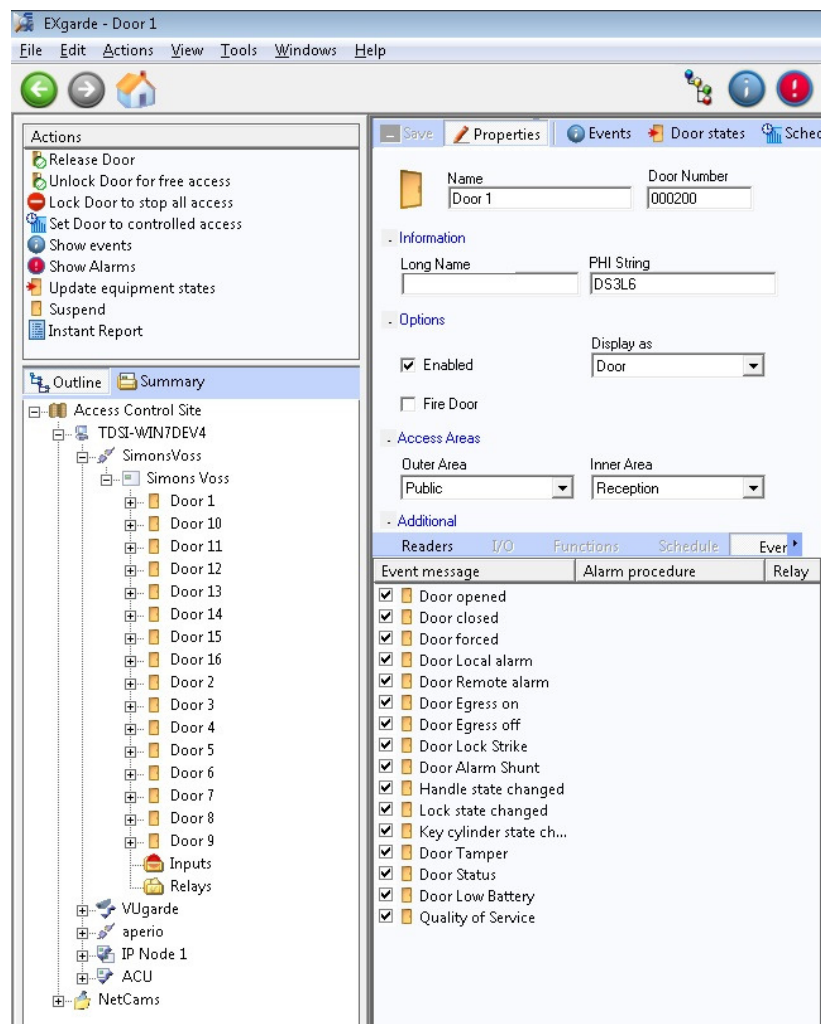
In Outline view the 16 doors belonging to the SimonsVoss will be shown directly below the new ACU you have created. If you click on any of the doors the door list will appear in the general display area in the right hand screen.

Left click on the relevant door in the list and select Properties,

You will need to assign a PHI string and the Door Number taken from the SimonsVoss software for the lock to operate correctly.

You can also set the Outer & Inner area. The Outer area being the area you are going from and the Inner Area being the area you are entering into to.

Any unused doors can be disabled by un-ticking the Enabled option in the Properties window



When you are satisfied with the information added click Save. You will need to repeat the configuring doors process to when adding a new door.

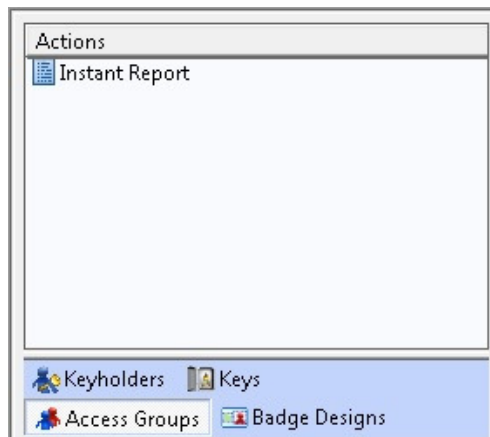


# 7. White List

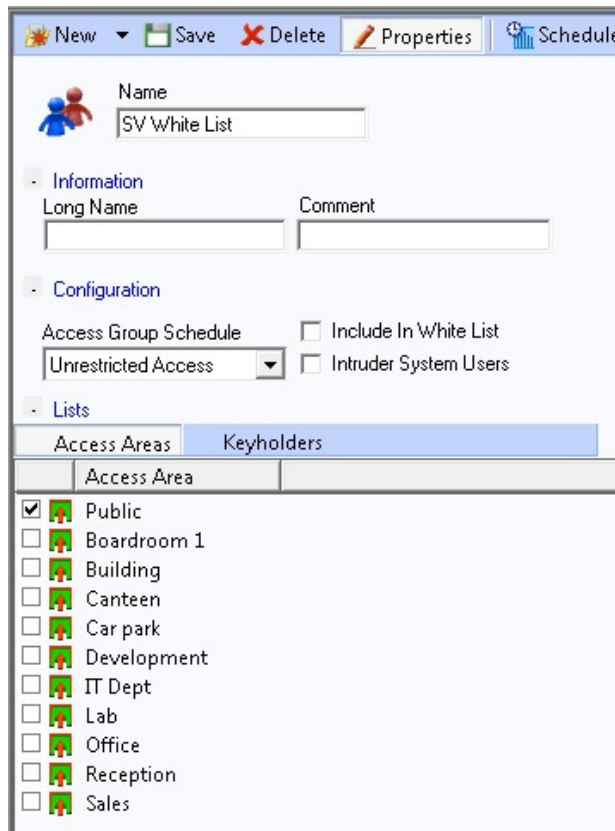
The white list is a list made up of specified Keyholders and their key number. The list can be downloaded to each lock to ensure that if the IP lock service is disconnected or the server goes down, the specified Keyholders will still have access.

To create a White list, ensure the SimonsVoss IP locks are installed and operational.

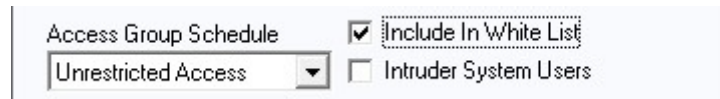
The First step is to open the Access Tab under Keyholders.



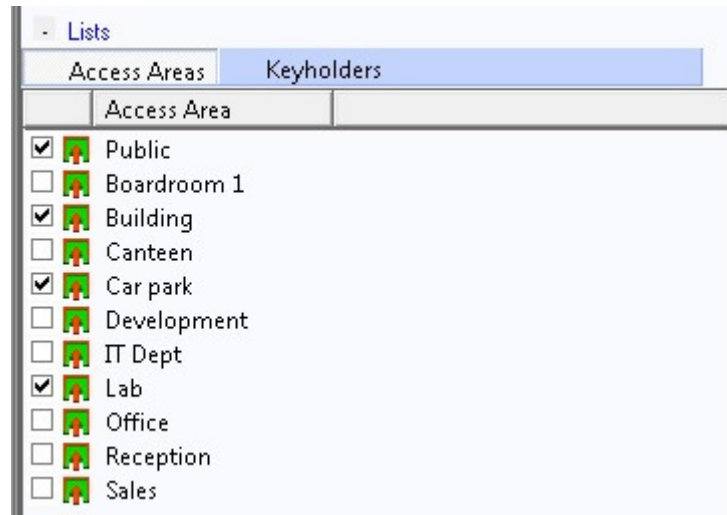
Click on the New tab to create a new group and label it appropriately.



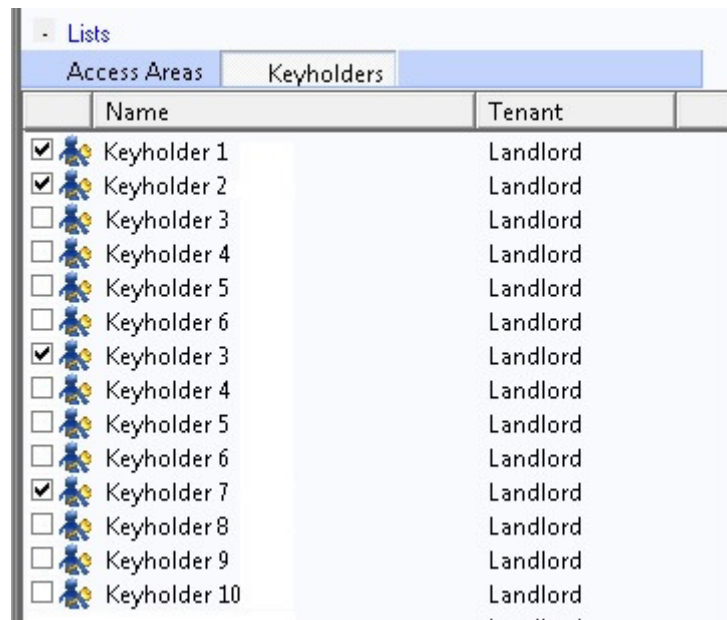
In the new group configuration, there is a check box to 'Include In White List'. This check box will ensure any Keyholders are sent to the locks.



You can then specify which Access Areas this new group will have access to.



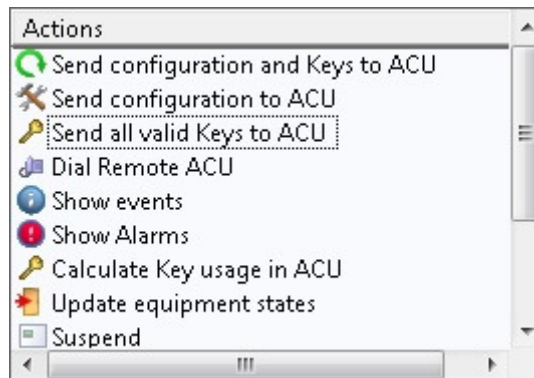
You can also specify which Keyholders will be included in the white list by selecting the Keyholders from the Keyholders tab.



When you have completed the setup, click on Save. This will prompt you to refresh the ACU's in the system.

To ensure the White list is sent to the SimonsVoss readers. Go to the Equipment Tab and select the SimonsVoss ACU.

Then select the 'Send all valid Keys to ACU' from the Actions Menu.



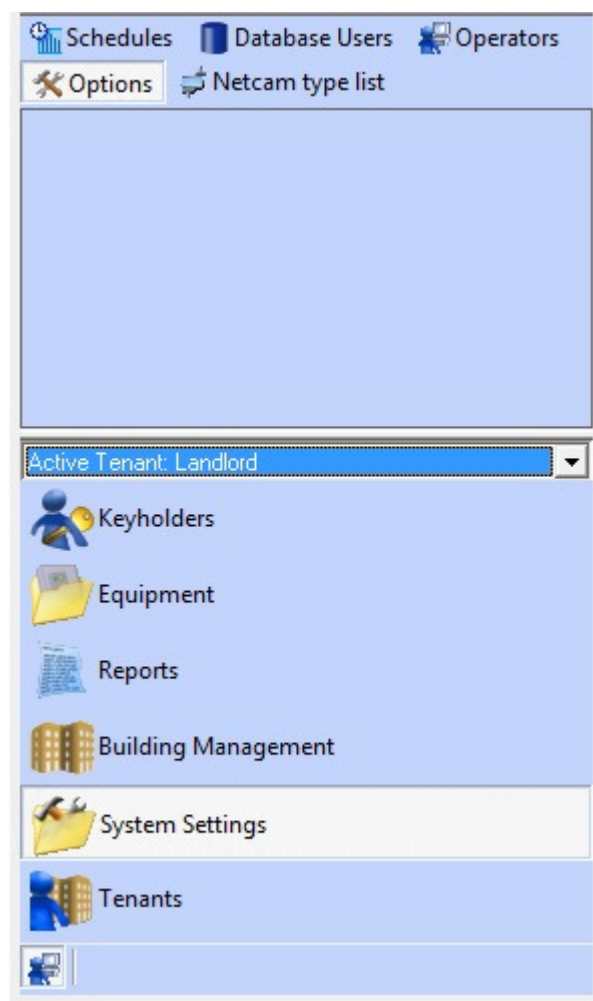
This will complete the process.

## 8. Office Mode

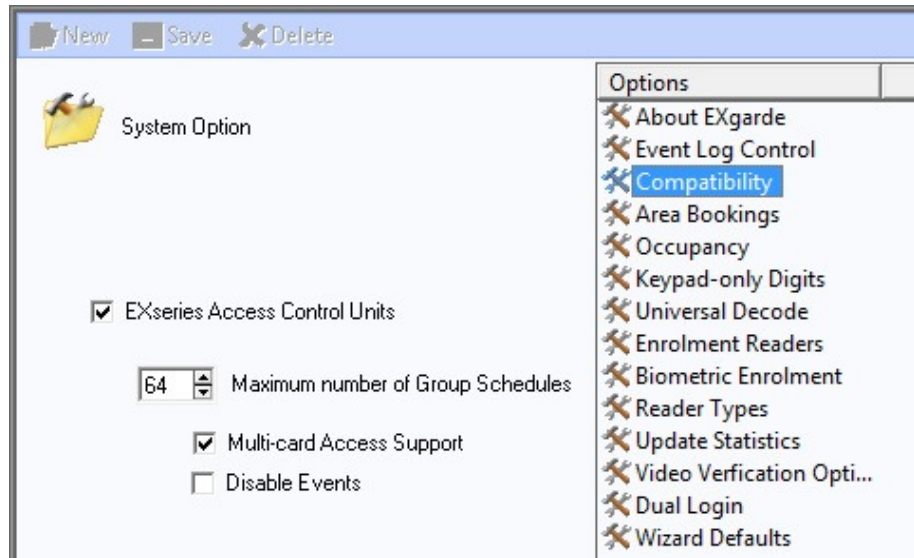
One of the key feature EXgarde and SimonsVoss can perform is the ability to operate an office mode on any of functioning locks. Office mode allows a Trustee to permanently unlock a reader with 2 or more presentation of their card. This feature is particularly useful if do not want to issue cards but still would like non card holders to access and area I.E a training room.

To set up office mode, you will need to enable the Multi-card function, establish trustees and apply the office mode to the required locks.

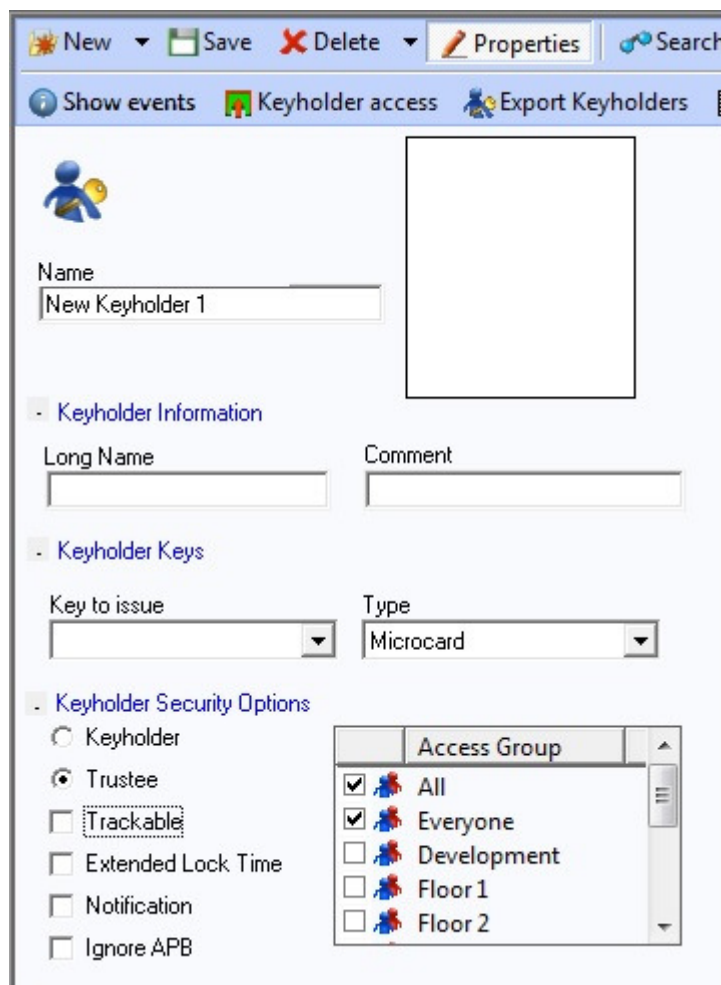
To enable the Multi-card Access Support function, click on the system setting button and navigate to the options tab.



Within the System Option menu is Compatibility. This option will allow to enable Multi-card Access Control Units. Ensure this has been selected before you save and exit.

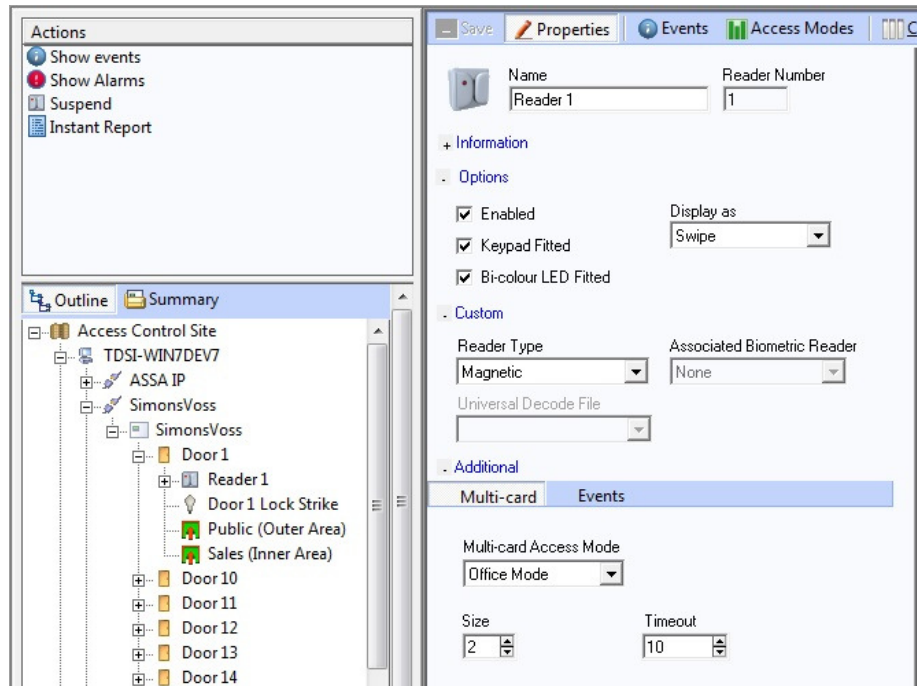


Next you will need to set up a trustee, to do this open the properties tab on the desired Keyholder and select the Trustee radial button.

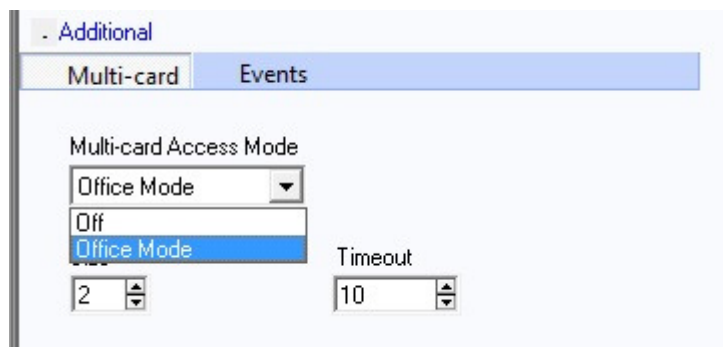


Click save when complete.

The final step is to enable office mode on the desired lock. To do this select the relevant reader or readers from the equipment list and select the properties tab.



Select the Multi-card tab and select Office Mode from the Multi-card Access Mode drop down menu.



To complete the process, click the Save button

Time and Data Systems International Ltd  
Unit 10 Concept Park  
Innovation Close  
Poole  
Dorset  
BH12 4QT  
UK

+44 (0)1202 723535  
+44 (0)1202 724975

<http://www.tdsi.co.uk/>  
[sales@tdsi.co.uk](mailto:sales@tdsi.co.uk)  
[marketing@tdsi.co.uk](mailto:marketing@tdsi.co.uk)  
[support@tdsi.co.uk](mailto:support@tdsi.co.uk)