

**Technical Specification**

**Specifications**

DC Supply Voltage:	Low voltage input 12Vdc unregulated
Current Consumption:	100mA @ quiescent maximum
Door Relay:	3Amp 12Vdc
Alarm output load:	150mA pull current
Memory:	Non volatile EPROM memory
Codes:	1 Master, 1000 cards and 1000 codes
Keypad:	12 keys, 3LED status indicators
Card Types:	EM or EM compatible
Induction Distance:	3-7cm
	Electric lock
Wiring Connections:	Remote Request to Exit
	Door open detection
	External Alarm
Tamper Protection:	Negative loop, normally closed
Keypad Housing:	Metal
Operating Temperature:	-15°C to 60°C (5°F to 140°F)
Nest Weight:	500g
Gross Weight:	700g

**Package Listing**

Name	Quantity	Remark
Digital Keypad SKR-3500	1	
User Manual	1	
Screwdriver	1	
Pastern Stopper	4	6*27mm, used for fixing
Self Tapping Screws	4	3.5*27mm, used for fixing

Please ensure that all the above contents are correct. If any are missing please notify the supplier.



**CFX-SKR-3500 Stand Alone Keypad & Proximity Reader**

**Setting Alarm Signal Output Time**

Press: **5** **[new time from 00-99 minutes]** **#**

**Setting Door Open Detection**

Press: **6** **00** **#** to disable this function (factory setting)

Press: **6** **01** **#** to enable this function.

In order for this feature to work, door contacts must be

connected. There are 2 programming functions that work together in this mode.

a.) If door is not closed after opening, the keypad buzzer sounds.

b.) If the door is forced open, keypad buzzer sounds and activates the alarm signal output.

**Setting Security Arrangement**

There are two levels of keypad security available for the SRK-3500.

Press: **7** **01** **#** to read 10 invalid cards or enter 4 wrong passwords in succession, the keypad is locked for 10 minutes.

Press: **7** **02** **#** to read 10 invalid cards or enter 4 wrong passwords in succession, the keypad activates buzzer and alarm signal output.

**To disable this feature:**

Press: **7** **00** **#** factory default setting.

**Resetting To Factory Default Setting**

To reset the flash memory (see figure 3), turn off the power, press the RESET key (K2) on the PCB, hold it and re-power the device, keep holding it for around 5 seconds until hear beeps, means reset to factory default setting successfully.

Note: Reset to factory default, the users information enrolled will lose, so use with care.

**3.2.2 To release the door**

**Card** + **Password** + **#**, and the door will open.

**3.2.3 To delete a user**

Carry out the same procedure as 3.1.3

**3.3 Valid card or password Mode (302 #)**

(In this mode, the user can only open the door by either the card or the password)

**3.3.1 To Add User**

First add the card as for a card user in 3.1.1:

Second, press **\*** to exit from the programming mode, then allocate the card a Password as follows

**3.3.1 To Add User**

Press: **\*** **read card** **1234** **#** **Password** **#** **Re-enter Password** **#**  
(Password is any four digits between 0000 - 9999 with the exception of 1234 which is reserved.)

To add the multi users, please repeat the former step.

**3.3.2 To release the door**

**Read Card**, the door will open. **Password** **#**, the door will open.

**3.3.3 To delete the user**

Carry out the same procedure as 3.1.3

**Setting Door Output Relay Strike Time**

(Default setting: 6 seconds)

The door relay operating duration time can be set from 0 seconds to a maximum of 99 seconds. The factory default setting is 6 seconds and can be changed by programming the desired relay operation time.

Press: **4** **[new time from 00-99 seconds]** **#**

**3.1.1 To Add Usercard Press:**

**1** **read card** **user ID number (000 to 999)** **#**

(Press **\*** if you want to save and exit)

**Note:** The user ID must be a unique 3 digit number. This is not the access password, it is just a ID number for the card, and the ID number must be different for each card.

**To add more than 1 card at a time:**

Enter the programming mode then press:

**1** **read card 1** **user ID number** **read card 2** **user ID number**  
..... **read card n** **user ID number (000 to 999)** **#**

**3.1.2 Use the card to release the door**

Simply swipe the card on the reader window, and the door will open.

**3.1.3 To delete the card**

There are 3 options to delete the user, in engineering mode.

a.) Press: **2** **Read card** **#** to delete individual user

b.) Press: **2** **user ID number** **#** to delete individual user

c.) Press: **2** **0000** **#** to delete all user

(Note this is a dangerous option so please use with care)

**3.2 Valid card and password Mode (301#)**

(In this mode, the user can only open the door by the card and password together)

**3.2.1 To Add User**

First add the card as for a card user in 3.1.1:

Second, press **\*** to exit from the programming mode, then allocate the card a Password as follows

Press: **\*** **read card** **1234** **#** **Password** **#** **Re-enter Password** **#**

(Password is any four digits between 0000 - 9999 with the exception of 1234 which is reserved.)

To add the multi users, please repeat the former step.

(Note: 1. All the steps below (from 3-7) are done in the Programming mode, that is **\*** **Master code** **#**.  
2. In each step when you finished the operation, if you want to save and exit from the programming mode, just press **\***; if you want to continue the programming, just go ahead to the next step directly until you finished, last press **\*** to save and exit.)  
finished, last press **\*** to save and exit.)

**3. User Operation Mode for access**

There are 3 different options: Card only, card and password, Card or Password

The option used is common to all users.

(Note: you can only choose one of them)

- Valid card only, Press: **3** **00** **#**
- Valid card and password, Press: **3** **01** **#**
- Valid card or password, Press: **3** **02** **#**

**3.1 Valid Card Mode (300#)**

(In this mode, the user can only open the door by the card)

# CFX-SRK-3500 Users Manual

## Specifications

- |   |  |
|---|--|
| 1:Programmable Functions<br>Relay latching or momentary<br>Relay strike time<br>Change Codes 1 master, 1000 users & 1000 proximity cards<br>Door open detection | 3:Wiring Connections<br>Electric lock<br>External bell<br>External Push Switch<br>Magnetic Contacts<br>Alarm |
| 2:Programmable Timers<br>Door relay time 00-99 seconds<br>Door open detection 00-99 seconds<br>Alarm time 00-99 minutes   | 4:Keypad<br>12 keys with backlight   |
|   | 5:Programming memory:<br>Non volatile EPROM memory   |

## IMPORTANT INFORMATION

There are no user serviceable parts contained with in the SRK-3500 access control keypad.

If holes are to be drilled before mounting onto a wall, check for hidden cables and/or pipes before drilling. Use safety goggles when drilling or hammering in cable clips.

Every effort has been made to provide accurate information, however slight variations can occur. We also reserve the right

**NOTE:**  
please read these instructions carefully before attempting to install the SRK-3500

## Internal Interface Circuit

- 1.Alarm output interface (See Figure 1)
- 2.Electric lock interface (See Figure 2)

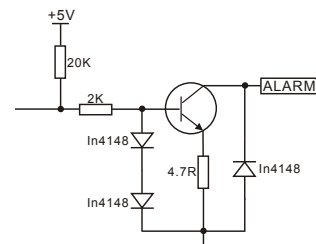


Figure 1

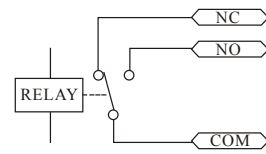


Figure 2

## Mounting

- 1.Attach the rear plate to a single or double gang electrical box or secure to the wall firmly with at least three flat head screws.
- 2.When wiring has been completed, attach the front cover to the rear plate.

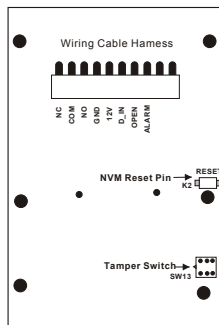


Figure 3

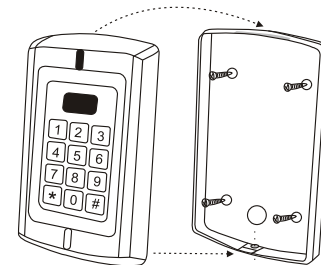


Figure 4

The front cover can be permanently secured by using the short screw supplied

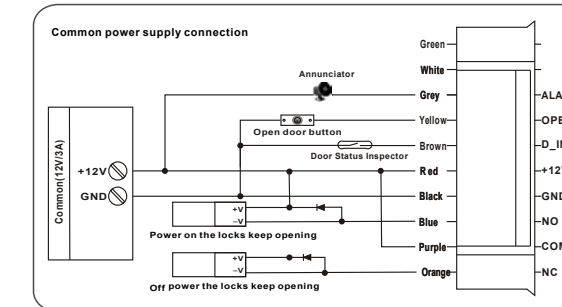
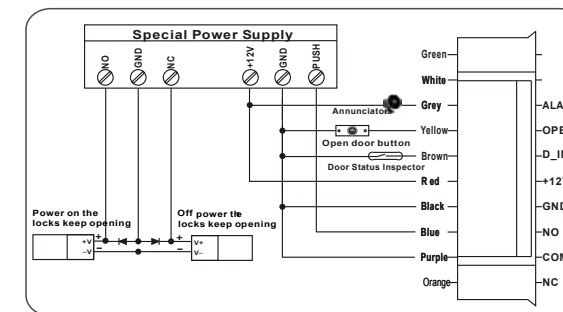
## Wiring

- 1.Unplug the cable harness and connect the necessary cables, (See Figure 3).
- 2.Tape any wires that are unused.
- 3.Plug in the cable harness on the PCB, (See Figure 3)
- 4.attach the front cover(See Figure 4)

## Terminal Wire Connector 1 Function

10		Green	
9		White	
8	ALARM	Grey	Alarm Switched negative when active
7	OPEN	Yellow	To Door EXIT Request Button Then Negative
6	D_IN	Brown	To Door Contact Then To Negative
5	12V	Red	(+) 12Vdc Positive Regulated Power Input
4	GND	Black	(-) Negative Regulated Power Input
3	NO	Blue	Door Strike Relay N/O
2	COM	Purple	Door Strike Relay Com
1	NC	Orange	Door Strike Relay N/C

Do not plug the power supply or transformer into the mains until all wiring has been completed and the front cover secured.



## Power Up

- 1.After all wiring is complete and the unit face plate is attached to the back plate, apply 12Vdc power to the unit. The red LED will be flashing.

## Engineer Programming Mode

### 1. To enter programming mode

Press: \* 9999 # quickly and within 5 seconds, The red and green LED will flash rapidly then slowly. If no key is pressed in 30 seconds the unit will exit programming mode. (Note: \* button is the same as door 'bell' symbol button)

## Note:

Press: [ ] to save changes and exit from the engineer programming, when all programming has been completed, otherwise changes will not be saved.

### 2. Master code: (Default code 9999)

To change Master code: In programming mode Press: 0 [new master code] # [re-enter new code] # [\*] Upon acceptance the red & green (yellow) LED lights and stops flashing. After pressing the [ ] button the keypad will exit programming mode and the red LED will flash. Note: the master code must be 4-8 digit number.

(Note: 1. All the steps below(from 3-7) are done in the Programming mode, that is [\*] Master code # .

2. In each step when you finished the operation, if you want to save and exit from the programming mode, just press [\*] ; if you want to continue the programming, just go ahead to the next step directly until you finished, last press [ ] to save and exit.)

### 3. User Operation Mode for access

There are 3 different options: Card only, card and password, Card or Password

The option used is common to all users.

(Note: you can only choose one of them)

1. Valid card only, Press: [3] [00] [#]
2. Valid card and password, Press: [3] [01] [#]
3. Valid card or password, Press: [3] [02] [#]