



METRACKCO

manage.track.protect.relax

File Name :	METRACKCO Camera User Guide	Creator	Humphrey NGUNDUE
Project:	SVT600/T1/T3	Creation Date: Update	2012-07-06 2013-06-26
Sub Project:	Accessories User Manual	Page:	1 of 7
Revision:	V1.2	Confidential:	External Documentation

METRACKCO[®] Camera



Applicable Model: SVT600/T1/T3

User Guide



METRACKCO

manage.track.protect.relax

File Name :	METRACKCO Camera User Guide	Creator	Humphrey NGUNDUE
Project:	SVT600/T1/T3	Creation Date: Update	2012-07-06 2013-06-26
Sub Project:	Accessories User Manual	Page:	1 of 7
Revision:	V1.2	Confidential:	External Documentation

Content

1. Copyright and Disclaimer	3
2.Application.....	3
3. Product Function and Specifications.....	3
3.1 Product Function	3
3.2 Specifications	3
4. Main Device and Accessories	4
5. Outward Appearance	4
6. First Use	4
6.1 Physical Installation	4
6.2 Connection Terminal	4
7. Feature	5
7.1 Setting Photographed Events	5
7.2Instruction of Snapshot	6
8. Note	7



METRACKCO

manage.track.protect.relax

File Name :	METRACKCO Camera User Guide	Creator	Humphrey NGUNDUE
Project:	SVT600/T1/T3	Creation Date: Update	2012-07-06 2013-06-26
Sub Project:	Accessories User Manual	Page:	1 of 7
Revision:	V1.2	Confidential:	External Documentation

1. Copyright and Disclaimer

Copyright © 2013 METRACKCO. All rights reserved.



and are trademarks that belong to Moango Group Holdings

The user manual may be changed without prior notification.

This user manual, or any part thereof, may not be reproduced for any purpose whatsoever without the written authorization of Meiligao (METRACKCO), or transmitted in any form, either electronically or mechanically, including photocopying and recording.

In no event shall Meiligao (METRACKCO) be liable for direct, indirect, special, incidental, or consequential damages (including but not limited to economic loss, personal injury, and loss of asset and property) arising out of the use or inability or illegality to use the product or documentation.

2. Application

RS232 interface terminal

For picture-taking

3. Product Function and Specifications

3.1 Product Function

- ☐ To output JPG format photos
- ☐ Remote photographs
- ☐ RS232 universal interface

3.2 Specifications

Item	Description
Dimension	62 x 51 x 51mm
Weight	200g
Normal Standby Power Consumption	25mA
Operating Temperature	-20 °C~55°C
Operating Humidity	5%~95%
Operating Voltage	5V
Internal Resistance	3.6R
Pixels	30 Million
Baud Rate	115200bps



METRACKCO

manage.track.protect.relax

File Name :	METRACKCO Camera User Guide	Creator	Humphrey NGUNDUE
Project:	SVT600/T1/T3	Creation Date: Update	2012-07-06 2013-06-26
Sub Project:	Accessories User Manual	Page:	1 of 7
Revision:	V1.2	Confidential:	External Documentation

4. Main Device and Accessories

- ☐ Camera
- ☐ 2G TF Card
- ☐ 4P to 8P Cable

5. Outward Appearance



Shot

6. First Use

6.1 Physical Installation

Camera and Vehicle: according to customers' need to install.

6.2 Connection Terminal

1. Insert the camera interface into tracker's dedicated interface

SVT600 dedicated interface is as follows:





METRACKCO
manage.track.protect.relax

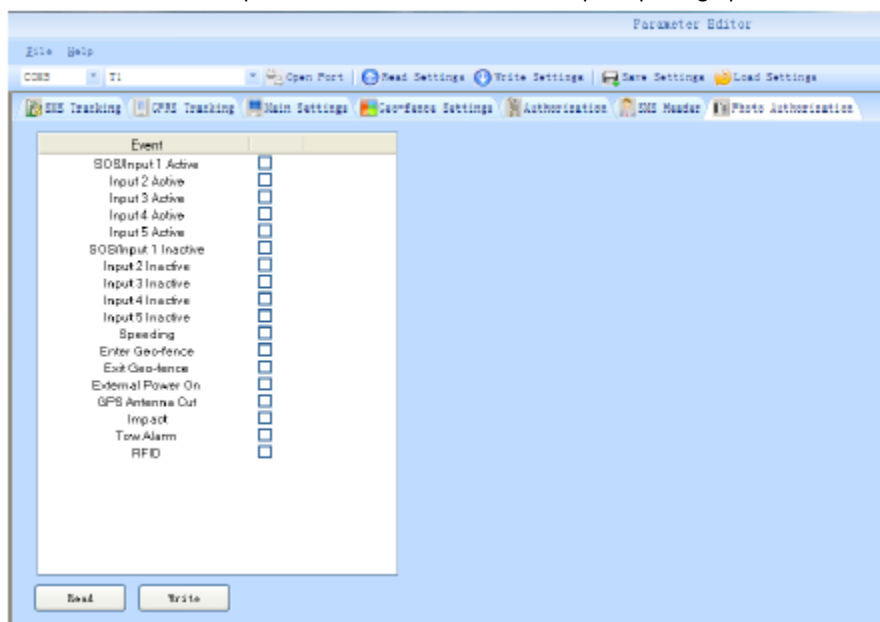
File Name :	METRACKCO Camera User Guide	Creator	Humphrey NGUNDUE
Project:	SVT600/T1/T3	Creation Date: Update	2012-07-06 2013-06-26
Sub Project:	Accessories User Manual	Page:	1 of 7
Revision:	V1.2	Confidential:	External Documentation

2. T1 dedicated interface is as follows:



7. Features

7.1 Connect METRACKCO parameter Editor to view and set up the photographed event.



2. It is able to connect the platform, and commands will be sent through the platform for setting photographed events, trigger the event will be able to take pictures.

When photographing events, the camera will shoot a photo storage TF card. View photos as needed in the platform, issued command through the platform under the instruction: "Get photos name", and that is able to get photos.



METRACKCO

manage.track.protect.relax

File Name :	METRACKCO Camera User Guide	Creator	Humphrey NGUNDUE
Project:	SVT600/T1/T3	Creation Date: Update	2012-07-06 2013-06-26
Sub Project:	Accessories User Manual	Page:	1 of 7
Revision:	V1.2	Confidential:	External Documentation

The screenshot shows two windows from the METRACKCO software. The 'Event Flag for Taking Picture (All Selected Devices)' window on the left lists various event codes with checkboxes, including 'Input 1 active', 'Input 2 active', 'Input 3 active', 'Input 4 active', 'Input 5 active', 'Input 1 inactive', 'Input 2 inactive', 'Input 3 inactive', 'Input 4 inactive', 'Input 5 inactive', 'Speeding', 'Enter Geo-fence', 'Exit Geo-fence', 'External power On', and 'GPS antenna cut'. The 'Control Panel' window on the right shows a list of devices with columns for 'Device Name', 'Latest Update', and 'Status'. The device 'T1' is selected. Below the device list, the 'Command' section shows 'Model: MT Series\MVT Series\T1' and 'Command: Set Event Flag for Taking Picture'. A 'Send Command' button is at the bottom.

7.2 Instruction of Snapshots

1. Device connect to the platform, select the command “snapshot”, No. 1 to send a snapshot command, the device will be uploaded to the platform to take photo.

The screenshot shows the 'Command' window. It has a dropdown menu for 'Model' set to 'MT Series\MVT Series\T1' and a dropdown menu for 'Command' set to 'Take a Picture'. Below these, there is an 'Index' field with the value '1'. A 'Send Command' button is at the bottom.



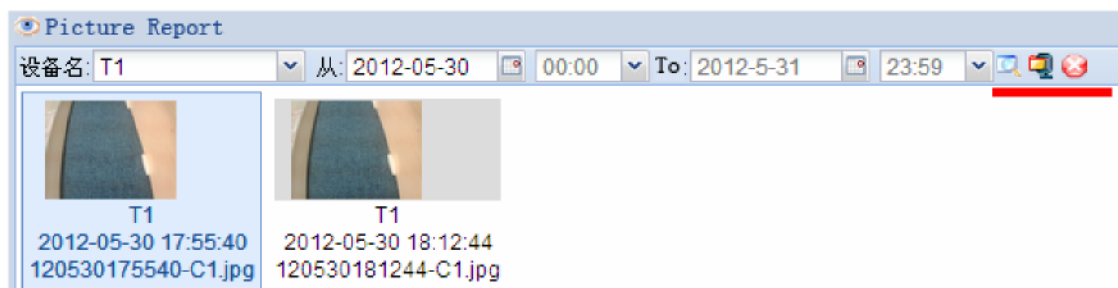
METRACKCO

manage.track.protect.relax

File Name :	METRACKCO Camera User Guide	Creator	Humphrey NGUNDUE
Project:	SVT600/T1/T3	Creation Date: Update	2012-07-06 2013-06-26
Sub Project:	Accessories User Manual	Page:	1 of 7
Revision:	V1.2	Confidential:	External Documentation



2. Through the query statements 照片 statement, select the device, based on the date you can view, download and delete upload photos to the server



8. Note

1. Please confirm the TF card format FAT32.
2. Please confirm SVT600 is connected to an external power supply.
3. Please make sure the SIM card is GPRS data can be uploaded.

Please make sure that the T1 cable is properly connected to cable.

Please do not hesitate to email us at info@metrackco.com if you have any questions.