



HPIBE01 BLUETOOTH NFC STEREO HEADSET User Manual

Thanks for buying our product. Please read this user manual carefully before using the product in order to obtain correct using and storage methods. Hope you have an enjoyable experience.

Precautions

- ▶ Do not drop or strong impact your headset.
- ▶ Do not disassemble or modify your headset in any way, or the warranty will become invalid.
- ▶ Do not use your headset in humid environment. If liquid permeates headset that would damage the product.
- ▶ Use correct power supply to charge. Improper power supply to charge would damage headset or have fire risk.

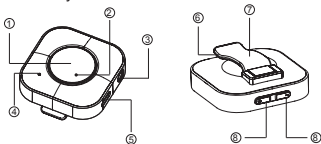
Product Specification

Product Name : BLUETOOTH NFC STEREO HEADSET
 Model Number : HPIBE01
 Size : 40*40*16.5 mm
 Weight : 14g
 Material : ABS
 Bluetooth Version : Bluetooth 3.0
 Working Distance : 10M
 Compatibility : All Bluetooth audio devices
 Battery : 120mA
 Continuous Working Time: 5.5H
 Standby Time : 15 days
 Charging Voltage : DC5V
 Working Current : 20mA
 Charging Current : 60mA
 Sleep Current : 50uA
 Working Peak Current : 30mA

Product Features

- ▶ Using Bluetooth 3.0 design, with stereo sound and callback function, brings better user experience.
- ▶ Using as stereo Bluetooth headset and audio receiver too. Support for call, controlling last and next song, and NFC pairing. When pairing, NFC would be turned on automatically and Bluetooth would be turned off.

Product Layout



- | | | |
|--------------------|---------------------|----------------------|
| 1、HOME | 4、Microphone | 7、NFC Induction Area |
| 2、Indicator Window | 5、USB Charging Port | 8、Volume up Key |
| 3、Audio jack | 6、Buckle | 9、Volume down Key |

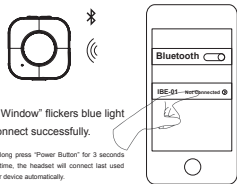
Instruction

Connect via Bluetooth Pairing

- 1、 Firstly long press "Power Button" for around 5 seconds. When "Indicator Window" flickers red and blue lights alternately, it shows Bluetooth headset pairing successfully.



- 2、 Open Bluetooth of mobile phone or other device, and search named "IBE-01" device, then click "connect" after searching successfully.



- 3、 "Indicator Window" flickers blue light that shows connect successfully.

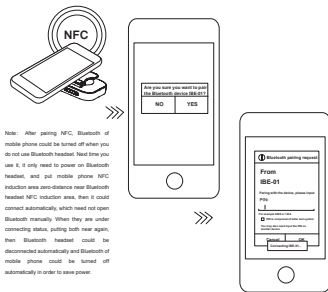
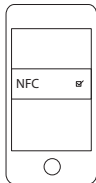
Note : Only need to long press "Power Button" for 3 seconds when you use next time, the headset will connect last used mobile phone or other device automatically.

Connect Via NFC Pairing

- 1、 Firstly long press "Power Button" for around 5 seconds. When "Indicator Window" flickers red and blue lights alternately, it shows Bluetooth headset pairing successfully.

- 2、 Open NFC of mobile phone or other device.

- 3、 Put mobile phone NFC induction area zero-distance near Bluetooth headset NFC induction area for around 5 seconds. When it shows dialog box on the mobile phone, you can click "connect". (If dialog box pops and needs enter pairing code, then inputs "0000". Please ignore it if it do not pop)



Note: After pairing NFC, Bluetooth of mobile phone could be turned off when you do not use Bluetooth headset. Next time you use it, it only need to power on Bluetooth headset, and put mobile phone NFC induction area zero-distance near Bluetooth headset NFC induction area, then it could connect automatically, which need not open Bluetooth manually. When they are under connecting status, putting both near again, then Bluetooth headset could be disconnected automatically and Bluetooth of mobile phone could be turned off automatically in order to save power.

Function

- 1、 Control pause/play/answer/reject: Under playing music, short press "Power Button", music pauses. Then short press "Power Button" again, music resumes. When it calls, short press "Power Button" to answer and long press "Power Button" for 3 seconds to reject. Under talking, short press "Power Button" to hang up the phone. When non-talking, double click "Power Button" to callback the last dialed number.
- 2、 Control volume up and down / Control last and next song: When playing music and talking, short press "+" to up and "-" to down volume. Under playing music, long press "+" to next song, and long press "-" to last song.

- 3、 Indicator light status: Charging---Red constant light; Saturation charging ---Blue constant light; Pairing Bluetooth---Red and blue light flicker alternately; Successful connecting or backing to connect---Blue light flicker.

- 4、 Charging and resetting: Just using standard Mico5P male DC5V 50MA and above power supply to charge. It would also reset circuit instantly when charging. As it inputs wrong key and is saturated charged that cause could not boot, key failure or function disorder etc., all of these could be resolved by resetting.

Frequently Asked Questions

Q1: Why won't my Bluetooth headset pair with my mobile phone?

- 1) Please check if headset is in pairing mode. Next open Bluetooth on mobile phone to search devices and connect.
- 2) Please check if power of headset is sufficient. Lack of power also would not connect. Please get headset fully charged before using.

Q2: Why is my mobile phone pairing invalid or failed by using NFC?

- 1) Please check if NFC on your mobile phone is open. (Open two set of NFC in mobile phone setting) Please check if headset NFC is under pairing mode. If mobile phone NFC connects with headset for the first time, the headset must be in pairing mode.
 Note: NFC function is unavailable when mobilephone or tablet is under screen locked status. NFC only can be used after unlocking the screen.

Package Contents

NFC Bluetooth Headset / USB cable / Y audio cable
 User Manual

After-sales Service

Provide one year warranty.