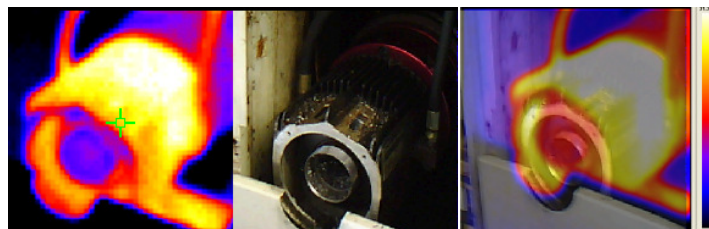


www.pce-group-europe.com



PCE Deutschland GmbH & Co.KG
Im Langel 4
Deutschland
D-59872 Meschede
Tel: 029 03 976 99-0
Fax: 029 03 976 99-29
info@warensortiment.de
www.warensortiment.de

Users Manual PCE-TC2



Inhaltsverzeichnis

1.	Contents of the Case.....	3
2.	Main Features and Controls.....	4
3.	Getting Started.....	5
3.1	Switching the Camera on/off	5
3.2	Charging the internal battery	5
3.3	Focusing	6
3.4	Hotkey Buttons	6
3.4.1	Menu	7
3.4.2	Saving an Image.....	7
3.4.3	Temperature Measurement.....	7
4.	Thermal and Visible Image Blending.....	8
4.1	Image Alignment.....	9
4.1.1	Settings.....	9
4.1.2	Examples of alignment.....	9
5.	Menu Structure.....	10
5.1	Infrared Settings	11
5.2	Measurement Options	12
5.3	Camera Settings.....	13
5.4	Audio Settings.....	14
5.5	Image Browser.....	15
5.6	Date & Time Settings.....	15
5.7	Language Selection	16
6.	Adding Captions when Saving Images.....	17
6.1	Voice message	17
6.2	Text Captions.....	18
7.	Appendix.....	19
7.1	Emissivity Look up tables.....	19
7.2	Technical Specification.....	20

1. Contents of the Case.



1. Case.
2. Camera.
3. PSU and International adaptors.
4. CD – User manual and Software.
5. USB cable (camera to PC).
6. Handle.
7. Quick Start Guide

2. Main Features and Controls.



3. Getting Started

3.1 Switching the Camera on/off



Press the on/off button to switch the camera on.

Press and hold for a few seconds to switch the camera off.

3.2 Charging the internal battery



The camera's built in battery is charged via the charging port. A fully charged battery will last approximately 6 hours. A red LED indicates charging which turns to green when the battery is charged.

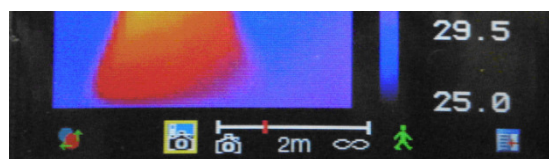


3.3 Focusing

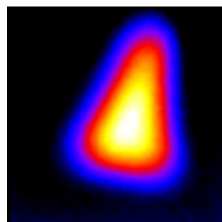


Gently rotate the lens clockwise and anti-clockwise to focus the image.

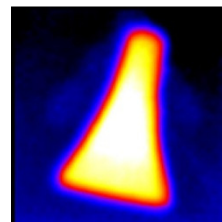
- ◆ *Remember to remove the lens cap.*



Focus bar



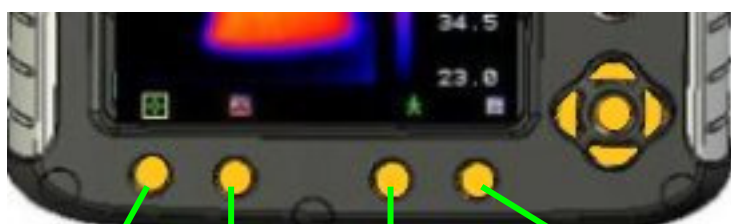
Out of focus



Focused


When focusing a focus bar appears on the screen to assist in focusing the image. It indicates the approximate distance in metres of a focused target from the camera.

3.4 Hotkey Buttons



Hotkey1 Hotkey2 Hotkey3 Hotkey4.

The Hotkey functions are indicated by the icons or text displayed on the screen above them. These

functions vary according to the operating options chosen by the user. A yellow box  around the icon for Hotkey1 or Hotkey2 indicates that this option is selected and this defines the operation of the navigation and toggle buttons. In normal imaging mode, Hotkey 3 may be used to freeze the image; pressing it again returns the camera to live operation. Hotkey 4 is used to enter and exit the menu.

3.4.1 Menu

The Menu is selected by Hotkey 4. Use the Navigation buttons to move around and use Hotkey 3 to select a menu function. Full details of menus in section 5.

3.4.2 Saving an Image



To save a live or frozen image, press the Save button once. If Caption Mode or Voice Annotation has been turned on, a text caption or voice annotation can be attached to the image (see section 6)

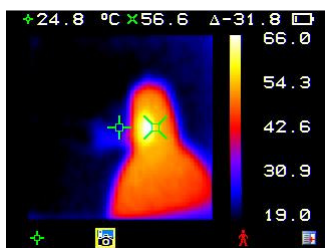
3.4.3 Temperature Measurement

Temperature readings are displayed at the top of the display. In the default mode, a single temperature in °C is of the centre point of the cursor. The other readings at the top of the display are E settings and reflected temperature setting. Two cursors or a measurement area can be selected from the measurement options menu (see section 5). The temperature range within the scene is indicated by a scale on the right hand side of the display.



4. Thermal and Visible Image Blending

The camera can show a thermal image or a visible image of the scene, or a mixed blend of both.



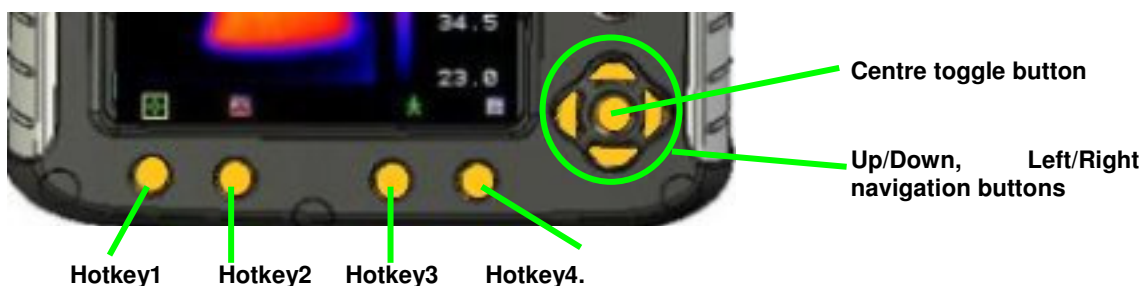
a) 100% Thermal only.









b) 100% Visible only.



c) 50% Thermal and 50% Visible












1. Press Hotkey 2  until the Visible on/off icon appears 
2. If off  press the centre toggle button  to toggle to Visible on .
3. Use either the up/down, or left/right navigation buttons  to merge (blend) the visible and thermal images. Blend options are 0%, 25%, 50% 75% and 100%.

4.1 Image Alignment

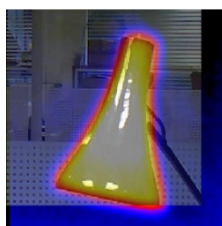
4.1.1 Settings

As the visible and thermal camera are not co-axial the visible and thermal image often need to be aligned. This is usually required when moving to view objects at different distances.

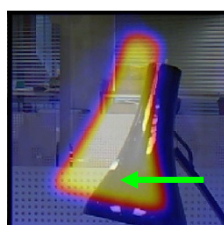
1. Press Hotkey 2  to toggle through to the Visible on/off icon  . If off  toggle the centre button  to turn the Visible option on .
2. Press Hotkey 1  to toggle through to the alignment option .
3. Use the up/down and left/right navigation buttons  to align the thermal and visible images.
4. The alignment facility is only available when the camera is on and in live mode

◆ **Note the visual image is moved during alignment.**

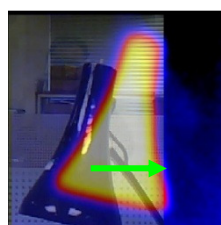
4.1.2 Examples of alignment.



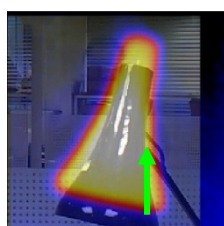
Fully Aligned



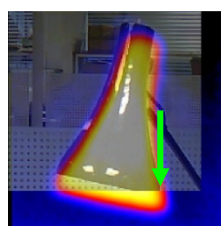
Align left



Align right











Align up

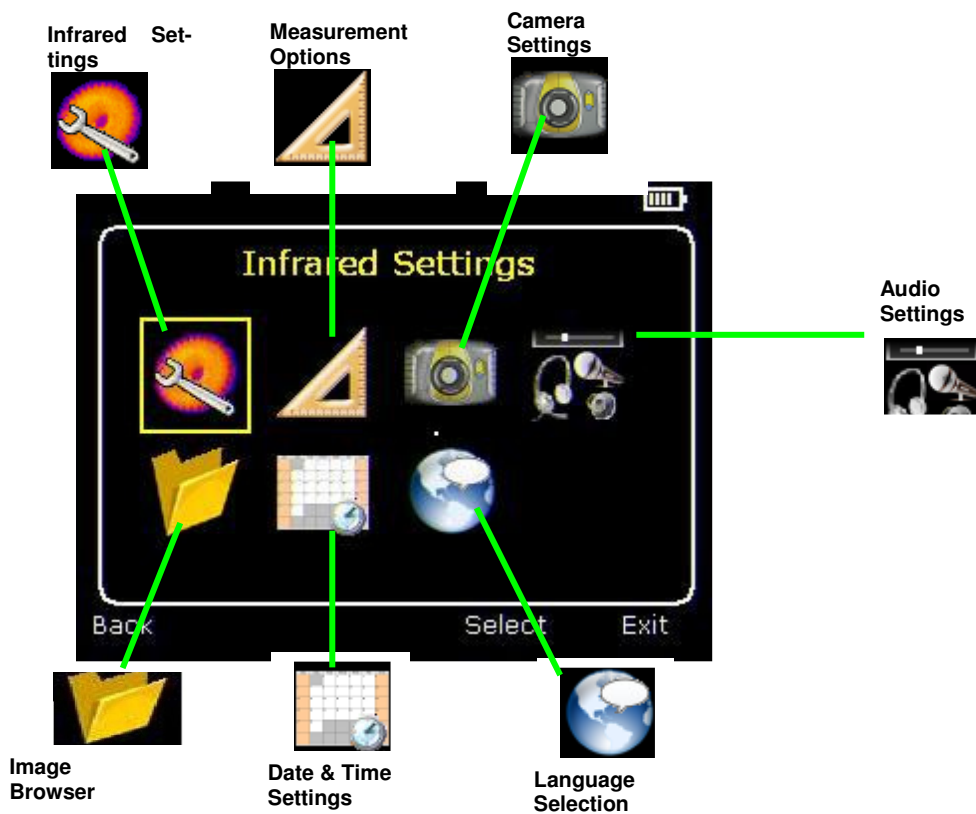
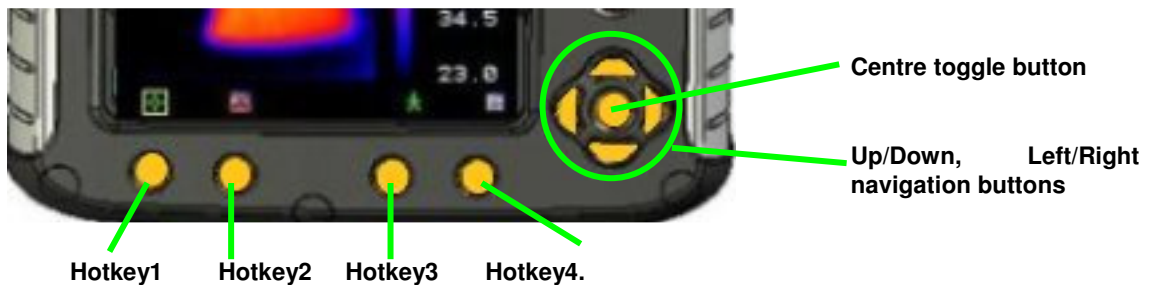


Align down

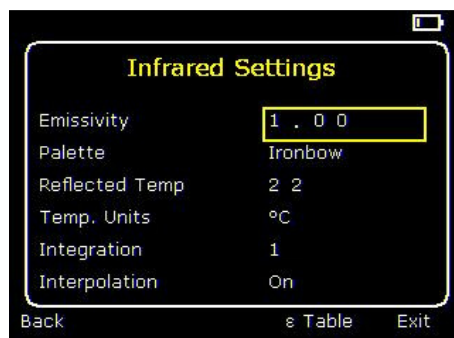
5. Four pre-programmed alignment distances are included. These are at 0.5m, 1m, 2 m and 4m ranges. With the alignment option selected by HK1, pressing the toggle button once aligns at 2 metres. Pressing the toggle button again allows you to cycle through to 4m, 0.5 m and 1 m.

5. Menu Structure.

- Select the menu  by pressing Hotkey 4 .
- Navigate through the menu using the navigation buttons  and press Hotkey 3  to select the required option. The highlighted item will have a yellow box around it.
- Use the up/down buttons  to move in the selected list and select the required item.
- Use the left/right buttons  to change values and options for the specific item.
- Press Hotkey 4  to exit or Hotkey 1  to go back to the previous menu.


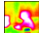


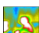
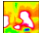




5.1 Infrared Settings

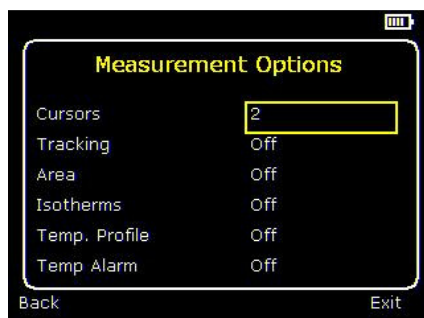


See frequently asked questions for more details of each item.

- ◆ Emissivity
Set emissivity value between 0.10 and 1.00 for measuring temperature.
Pressing Hotkey 3 (ε Table) gives a table of emissivity values of common materials from which a selection can be made.
- ◆ Palette
Display in image using different colour palettes.

<ol style="list-style-type: none"> 1. Ironbow  2. Rainbow  3. Isotherm Style  4. Hot Metal  	<ol style="list-style-type: none"> 4. High Contrast  5. Rainbow 16  6. Black Hot  7. White Hot 
---	---
- ◆ Reflected Temp
Usually set to the ambient temperature.
Applies only when emissivity of less than 1 is selected.
- ◆ Temp units
Choose between °C and °F.
- ◆ Integration
Chose an integration period from 1 (fast) to 9 (slow).
This determines the trade off between display speed and noise.
- ◆ Interpolation
Choose Off or On.
This shows or hides the thermal image pixelation.

5.2 Measurement Options



This menu enables the selection of options for temperature measurements. The symbols shown below indicate the icons shown for Hotkey 1 when the various options are selected. See frequently asked questions for more details of each item.

◆ Cursors



Choose between one or two cursors. When two cursors are chosen, the temperatures at both cursors and the temperature difference between them will be displayed. When one of the cursors is selected by Hotkey 1, it can be moved around on the display by the navigation buttons.

◆ Tracking



Select "High", "Low", or "High & Low" in order to track and measure the hottest point, the coldest point, or both hottest and coldest points in the image.

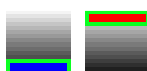
◆ Area



If this option is turned on, the highest, lowest, and average temperatures within the designated area will be displayed. Three different area size boxes can be selected via Hotkey 1

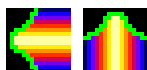
Note that the above three items are mutually exclusive, i.e. when one is turned on the other two are disabled.

◆ Isotherms



Select "High", "Low", or "High & Low" in order to highlight areas of the scene with temperatures within one or two temperature bands. The temperature bands are adjustable by means of Hotkey 1 and the navigation keys.

◆ Temp. profile



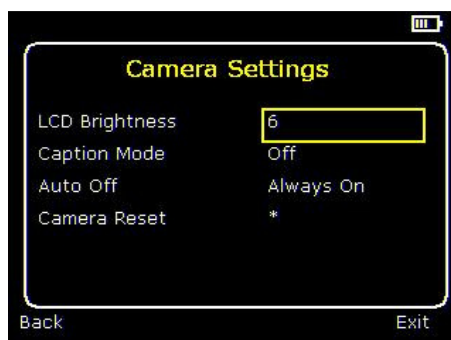
Select "Horizontal" or "Vertical" to enable a histogram of temperature values along a horizontal or vertical cross section to be displayed on the right hand side of the display. The position of the cross section is indicated by small arrows at the left and right or top and bottom of the image and can be adjusted by means of Hotkey 1 and the navigation buttons.

◆ Temp alarms




Select "High", "Low", or "High & Low". Visual and audio alarms will be triggered if either cursor or a point within the designated area is higher or lower than a set temperature. The high and low set temperatures may be adjusted by means of Hotkey 1 and the navigation buttons.

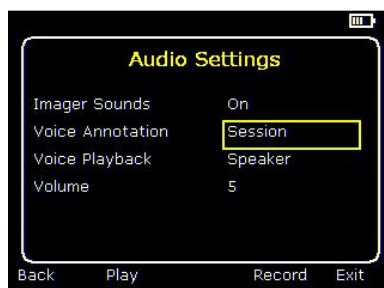
5.3 Camera Settings



See frequently asked questions for more details of each item

- ◆ LCD Brightness
Select from 1 (low) to 9 (high) to control the screen brightness to save battery power.
- ◆ Caption Mode
Select "On" to enable the addition of a text caption when saving an image. Options will then be displayed when saving an image, to be selected by means of Hotkey 2 and Hotkey 3.
- ◆ Auto Off
Select "5 Mins", "10 Mins", "20 Mins" to allow the camera to switch itself off after a defined period of inactivity in order to save power.
- ◆ Camera Reset
Select with Hotkey 3  to restore the factory settings.

5.4 Audio Settings

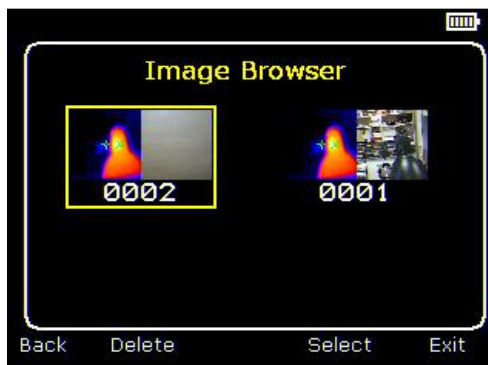


See frequently asked questions for more details of each item

- ◆ **Imager Sounds**
Select “Off” to mute all audible outputs.
- ◆ **Voice Annotation**
Select “Session” to add a voice message at the start of a set of images (A session ends when the imager is switched off).
Select “Individual” to add a voice message to each saved image.
Select “Combined” to add a common voice message at the start of a set of images and add additional comments for each image.
- ◆ **Voice Playback**
Select “Speaker” or “Headset” for the desired method of audible outputs.
- ◆ **Volume**
Select the volume of the audible outputs from 0 to 9.

If session is selected the voice message is recorded in the audio settings by pressing Hotkey 3. Recording is stopped by pressing Hotkey 3 again. Hotkey 2 can be used to play back the recorded message. Hotkey 3 can be used to re-record if necessary.

5.5 Image Browser



The saved images are shown on the screen with the most recently saved image first.

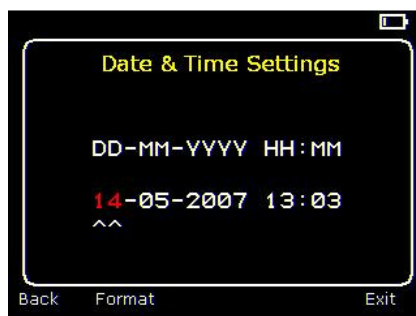
Select the desired image by means of the navigation keys.


To display the selected image press Hotkey 3.


To delete the selected image press Hotkey 2, to confirm deletion press Hotkey 3.

When a stored image is displayed, press Hotkey 3 to return to live imaging.

5.6 Date & Time Settings




a) Use the left/right buttons  to navigate in this menu, the item that can be changed is highlighted in red. In the picture above the day (DD) 14 is highlighted.

b) Use the up/down buttons  to change the value.

5.7 Language Selection



- a) When the language is highlighted (shown by a yellow box around it) press Hotkey 3  to select.



French



German



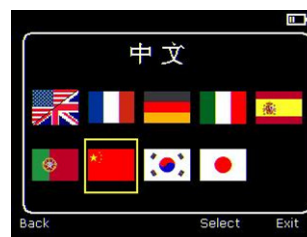
Italian



Spanish



Portuguese



Chinese



Korean






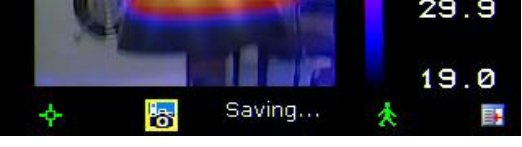


Japanese

6. Adding Captions when Saving Images

6.1 Voice message

When saving an image with Individual Voice Annotation turned on, there is the option of saving a voice message with each image. The screen shots below describe the procedure:

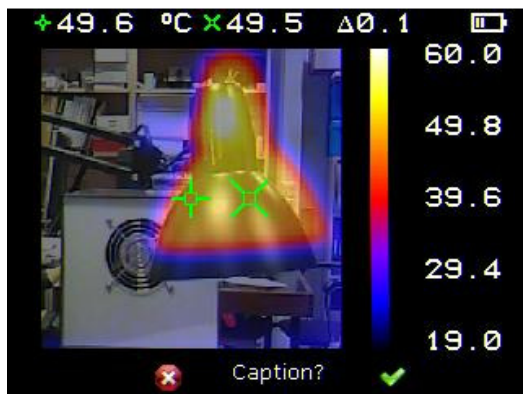
 <p>a) Do you wish to attach a voice message to this saved image? Hotkey 2 for no <input type="checkbox"/>. Hotkey 3 for yes <input checked="" type="checkbox"/>.</p>	 <p>b) Start voice recording? <input checked="" type="checkbox"/> Hotkey 3 for yes.</p>
 <p>c) Stop Recording Hotkey 3 <input type="checkbox"/> to stop.</p>	 <p>d) Option to Re-record the voice message? Hotkey 2 for Yes <input checked="" type="checkbox"/> Hotkey 3 for No <input type="checkbox"/></p>
 <p>e) If caption mode is selected this option will now be offered to save a text caption.(see 6.2)</p>	 <p>f) Image with voice message is being saved.</p>

Playback

The voice recording can be played back when viewing saved images in the browser.

6.2 Text Captions


When saving an image with Caption Mode turned on, there is the option of attaching a text caption to each image. The screen shots below describe the procedure:



a) Do you wish to attach a text caption message to this image?



1. Use the up/down arrow buttons  to cycle through letters and numbers until the one required appears. The available symbols are: ABCDEFGHIJKLMNOPQRSTUVWXYZabcdefghijklmnopqrstuvwxyz0123456789

2. Use the left/right arrow buttons  to move to the next space and repeat the above step until the caption is completed.

3. Press Hotkey 2  to clear the whole message.

4. Press Hotkey 4  to exit and save the image and caption.

- ◆ **Captions cannot be viewed with the saved images in the browser due to display constraints. The captions can be viewed using the PC software.**

7. Appendix

7.1 Emissivity Look up tables.

0.98 = Carbon filed surface	0.79 = Steel oxidised
0.98 = Frost crystals	0.78 = Copper heavily oxidised
0.98 = Human skin	0.77 = Cotton cloth
0.97 = Slate	0.76 = Sand
0.96 = Water distilled	0.75 = Unglazed silica
0.96 = Ice smooth	0.74 = Oxidised iron at 100 °C
0.95 = Soil saturated with water	0.73 = Coating No. C20A
0.95 = Carbon candle soot	0.72 = Basalt
0.94 = Glass polished plate	0.71 = Graphitised carbon at 500 °C
0.94 = Paint, oil	0.70 = Red Rust
0.93 = Brick red	0.69 = Iron sheet heavily rusted
0.93 = Paper white bond	0.67 = Water
0.92 = Concrete	0.66 = Black Loam
0.92 = Soil dry	0.65 = White cement
0.91 = Plaster rough coat	0.64 = Iron cast oxidised
0.90 = Wood planed oak	0.63 = Lead oxidised at 1100 °F
0.90 = Glazed earthenware	0.62 = Zirconia on inconel
0.89 = Snow, granular	0.61 = Cu-Zn, brass oxidised
0.88 = Glazed Silica	0.58 = Inconel sheet at 760 °C
0.87 = Cuprous Oxide at 38 °C	0.56 = Smooth white marble
0.86 = Emery Corundum	0.55 = Al anodised chromic acid
0.85 = Snow	0.21 = Iron cast polished
0.85 = Stainless oxidized at 800 °C	0.20 = Brass rubbed 80 grit emery
0.84 = Oxidised Iron at 500 °C	0.16 = Stainless steel 18-8 buffed
0.83 = Cuprous Oxide at 260 °C	0.09 = Aluminium as received
0.82 = Snow, fine particles	0.07 = Steel polished
0.81 = Brass, unoxidised	0.05 = Aluminium polished sheet
0.80 = Glass, convex D	0.05 = Copper polished
	0.03 = Brass highly polished

7.2 Technical Specification

Performance

Temperature range:	-10°C to +300°C
Field of view (FOV):	20°x 20°
Spectral Response:	8µm to 12 µm
Sensitivity:	≤0.3°C @ 30°C
Detector:	47 x 47 pixel array
Frame rate:	8Hz
Focus Range:	0.5m to infinity

Image Storage

Number:	Up to 1000 images on SD card supplied
Medium:	Micro SD Card

Display

3½" colour LCD with LED Backlight. 8 colour palettes. Mixed thermal and visible images.

Laser Pointer

A built in Class 2 laser is supplied to highlight the centre of the thermal image. (Aligned at 2 metres)

Beam Divergence	<0.2mrad
Maximum Output	<1mW

Measurement

Temperature range:	-10°C to +300°C
Radiometry:	Two moveable temperature measurement cursors Temperature difference measurement
Emissivity Correction:	User selectable 0.10 to 1.00 in steps of 0.01 with reflected ambient temperature compensation
Accuracy:	The greater of ±2°C or ±2% of reading in °C

Imager Power Supply

Battery:	Lithium-ion field rechargeable.
Operation time:	Up to 6 hours continuous operation
AC operation:	AC adaptor supplied

Mechanical

Housing:	Impact Resistant Plastic with overmoulded soft plastic and detachable handle
Dimensions:	130mmx95mmx90mm (excluding handle)
Weight:	0.70kg
Mounting:	Handheld & tripod mounting 1/4" BSW

Settings and Controls

- On/Off soft power control
- User selectable span control
- User selectable level control
- Auto adjust span and level
- Laser trigger switch
- Readout in °C or °F
- User selectable image integration
- User selectable emissivity setting
- User selectable reflected temperature
- Two moveable temperature measurement cursors
- Area analysis
- X-Y profiles
- Isotherms
- Text annotation
- Voice annotation
- Image capture, time and date

- Visual/audio alarm high and low

Optional Accessories

- 12V car charger
- Light shade.

Features

- Real-time image and temperature measurement display
- Visible/thermal/mixed image fusion (100%, 75%, 50%, 25%, 0%)
- Simple operation
- Multiple temperature measurement
- Image browser
- Battery Charge indicator
- Lightweight
- Laser Pointer
- Auto hot/cold seeker
- Languages

IRI 2010 Includes

IR Camera, Handle, Battery, AC Adaptor, Quick start guide, Carrying Case, CD with user manual and software (Analysis and report writer)

Computer Requirements (for PC software)

PC: IBM compatible PC with a minimum of: 300MHz processor, MS Windows XP 128MB RAM (see Irisys website for current list of operating systems supported).

16 bit colour

graphics with 1024x768 capability

Environment

Temp. operating range: -5°C to +45°C

Humidity: 10% to 90% non condensing

Temp. storage range: -20°C to +60°C

CE Mark (Europe)

IP rating: IP54

Operating temp for stated accuracy: 23 °C